

RESEARCH ARTICLE

Focal adhesion kinase and Src mediate microvascular hyperpermeability caused by fibrinogen- γ C-terminal fragments

Xiaohua Guo¹ , Rebecca A. Eitnier¹ , Richard S. Beard, Jr.² , Jamie E. Meegan³ , Xiaoyuan Yang³, Alexandra M. Aponte¹, Fang Wang¹, Peter R. Nelson⁴ , Mack H. Wu^{1*}

1 Department of Surgery, University of South Florida Morsani College of Medicine, Tampa, FL, United States of America, **2** Department of Biomolecular Research, Boise State University, Boise, ID, United States of America, **3** Department of Molecular Pharmacology and Physiology, University of South Florida Morsani College of Medicine, Tampa, FL, United States of America, **4** Department of Surgery, University of Oklahoma Health Sciences Center, Oklahoma City, OK, United States of America

 These authors contributed equally to this work.

* mwu1@usf.edu



OPEN ACCESS

Citation: Guo X, Eitnier RA, Beard RS, Jr., Meegan JE, Yang X, Aponte AM, et al. (2020) Focal adhesion kinase and Src mediate microvascular hyperpermeability caused by fibrinogen- γ C-terminal fragments. *PLoS ONE* 15(4): e0231739. <https://doi.org/10.1371/journal.pone.0231739>

Editor: Yulia Komarova, University of Illinois at Chicago, UNITED STATES

Received: May 30, 2019

Accepted: March 30, 2020

Published: April 30, 2020

Copyright: © 2020 Guo et al. This is an open access article distributed under the terms of the [Creative Commons Attribution License](https://creativecommons.org/licenses/by/4.0/), which permits unrestricted use, distribution, and reproduction in any medium, provided the original author and source are credited.

Data Availability Statement: All relevant data are within the manuscript and its Supporting Information files.

Funding: This work was supported by National Institutes of Health Grants [HL120954 and HL096640]. R.S.B.J. was supported by career development funding from the National Institutes of Health [GM109095] and the American Heart Association [17SDG33660381]. The funders had no role in study design, data collection and

Abstract

Objectives

We previously reported microvascular leakage resulting from fibrinogen- γ chain C-terminal products (γ C) occurred via a RhoA-dependent mechanism. The objective of this study was to further elucidate the signaling mechanism by which γ C induces endothelial hyperpermeability. Since it is known that γ C binds and activates endothelial α v β 3, a transmembrane integrin receptor involved in intracellular signaling mediated by the tyrosine kinases FAK and Src, we hypothesized that γ C alters endothelial barrier function by activating the FAK-Src pathway leading to junction dissociation and RhoA driven cytoskeletal stress-fiber formation.

Methods and results

Using intravital microscopy of rat mesenteric microvessels, we show increased extravasation of plasma protein (albumin) resulting from γ C administration. In addition, capillary fluid filtration coefficient (K_{fc}) indicated γ C-induced elevated lung vascular permeability. Furthermore, γ C decreased transendothelial barrier resistance in a time-dependent and dose-related fashion in cultured rat lung microvascular endothelial cells (RLMVECs), accompanied by increased FAK/Src phosphorylation detection by western blot. Experiments with pharmacological inhibition or gene silencing of FAK showed significantly reduced γ C-induced albumin and fluid leakage across microvessels, stress-fiber formation, VE-cadherin tyrosine phosphorylation, and improved γ C-induced endothelial barrier dysfunction, indicating the involvement of FAK in γ C mediated hyperpermeability. Comparable results were found when Src was targeted in a similar manner, however inhibition of FAK prevented Src activation, suggesting that FAK is upstream of Src in γ C-mediated hyperpermeability. In addition, γ C-induced cytoskeletal stress-fiber formation was attenuated during inhibition or silencing of these tyrosine kinases, concomitantly with RhoA inhibition.

analysis, decision to publish, or preparation of the manuscript.

Competing interests: The authors have declared that no competing interests exist.

Conclusion

The FAK-Src pathway contributes to γ C-induced microvascular barrier dysfunction, junction protein phosphorylation and disorganization in a manner that involves RhoA and stress-fiber formation.

Introduction

When severe injury results in bleeding, fibrinogen, a soluble protein consisting of α , β and γ polypeptide pairs, is converted at the wound into fibrin by thrombin [1]. The proteolysis of fibrin is coupled with its breakdown into fibrin degradation products (FDPs), which includes a D-dimer and soluble C-termini of the α , β and γ chains [1]. Elevated plasma levels of FDPs have been documented in numerous pathological conditions, such as congestive heart failure [2], ischemic strokes [3], and myocardial infarctions [4]. Of all the soluble fibrinogen monomers, the C-terminus of the γ chain is of specific interest due to its reactivity imparted by a calcium binding site, polymerization pocket and cross-binding site. This reactive region allows for surface receptor binding and stimulates fibrin cross-linking [5]. Our previous study identified the C-terminal fragment of fibrinogen gamma chain (γ C) as a mediator of microvascular leakage via association with α v β 3 integrin receptor in RhoA-dependent pathway [5], which suggested the participation of the fibrinolysis pathway in other cellular functions besides coagulation. However, the mechanism behind fibrinogen γ C microvascular hyperpermeability is not fully understood.

Endothelial cells line the internal vascular surface and in conjunction with the underlying extracellular matrix (ECM) creates an important interface responsible for maintaining vascular barrier function [6, 7]. The integrity of this barrier is largely dependent on junction proteins, which are connected to the F-actin cytoskeleton via linker proteins [6, 7]. Proinflammatory mediators, including interleukin-1 (IL-1), tumor necrosis factor (TNF), vascular endothelial growth factor (VEGF), and activated neutrophils are capable of causing endothelial barrier dysfunction [8, 9]. The underlying mechanism involves cytoskeleton contraction, adherens junction (AJ) dissociation, and focal adhesion disruption [9]. Impaired barrier function results in microvascular leakage and edema, which are hallmark events in the progression of severe trauma, sepsis, multiple organ failure, and other inflammatory disease conditions [6, 9].

Tethering of the endothelial monolayer to the ECM is mediated by focal adhesion complexes, which are regulated by various signaling molecules and play a critical role in mediating adhesion, contraction and permeability [6, 10, 11]. Within this dynamic cellular environment, focal adhesion kinase (FAK) catalyzes various downstream reactions leading to focal adhesion assembly and integrin linkage allowing the endothelial monolayer to attach to the extracellular matrix [11–13]. FAK is mainly regulated through tyrosine phosphorylation at residues Y925, Y397 and Y576/577 [12]. Activation of these sites leads to focal adhesion formation, integrin binding, cell contraction, intercellular gap formation and consequential microvascular barrier dysfunction [12–14]. Numerous inflammatory mediators have been reported to activate FAK and cause increased transendothelial permeability [10, 15]. Our laboratory and others have shown that inhibition of FAK attenuates vascular hyperpermeability in response to VEGF [8, 14], activated neutrophils [13], and advanced glycation end products (AGEs) [16]. The interaction between FAK and other tyrosine kinases, such as c-Src, a non-receptor tyrosine kinase belonging to the Src family kinases (SFKs), has been well established over the past decades [12, 15, 17, 18]. Studies have shown that Src induces vascular permeability through focal adhesion

complex interactions and phosphorylation of Vascular Endothelial (VE)-cadherin, which results in dissociation of cadherin-catenin-actin AJ complexes [16]. Previous studies have demonstrated that Src inhibition attenuates TNF α -induced pulmonary vascular hyperpermeability via restoring VE-cadherin integrity [19]. Blocking the Src pathway can also reduce β -catenin phosphorylation and neutrophil-induced vascular hyperpermeability [20].

It is well documented that FAK and Src activity are heavily associated with the RhoA pathway [12, 21]. Activation of FAK and Src increase phosphorylation of cytoskeletal proteins, including p190RhoGAP, a key regulator of Rho activity [21, 22]. Activation of small GTPases RhoA play a central role in regulating actin dynamics, and RhoA is directly responsible for F-actin stress fiber formation [23]. The close correlation between F-actin stress fiber formation and loss of endothelial monolayer integrity in response to hyperpermeability factors has been reported [24, 25].

Despite the increasing evidence that FDPs contribute to inflammation [3–5], physiological mechanism of the disease development remains to be decided due to complexity of fibrinogen's multi-domain structure and its diverse cellular targets. In our previous study, we notated γ C stimulated integrin-mediated barrier dysfunction by targeting α v β 3 [5]. Considering that the role of FAK and Src are well documented in vascular leakage and the development of inflammatory diseases [12, 13, 26, 27], and its association with α v β 3 integrin signaling was reported [5], FAK and Src have emerged as potential mediators to transmit the γ C barrier response. In the current study, we sought to determine if FAK and/or Src activity drives γ C microvascular leakage. Assessing the physiological impact of targeting these kinases may provide new information for developing therapeutic strategies in improving severe trauma-induced vascular hyperpermeability.

Materials and methods

Reagents and supplies

A detailed list of reagents, supplies, and vendors is provided in [S1 Table](#).

Intravital microscopy

Protocol instructions were followed as previously described [5]. Rats (males weighing 200–300 g) were anesthetized with an intramuscular injection of urethane at 1.75 g/kg. Right carotid artery was cannulated and connected to a pressure transducer for continuous blood pressure monitoring by a DigiMed Blood Pressure Analyzer (Micro-Med; Louisville, KY). The left jugular vein was cannulated for infusion of drugs and/or solutions. A midline laparotomy was performed, and a section of the proximal ileum mesentery was exteriorized over the optical stage for microscopic observation. The exteriorized mesentery was constantly superfused with 37°C lactated Ringer's Injection USP (Baxter Healthcare; Deerfield, IL). The body temperature was maintained at 37°C using a heating pad (Fine Science Tools; North Vancouver, BC) and animals received continuous intravenous infusion of lactated Ringer's at 0.04 mL/min/kg of body weight to replenish fluid loss during the experiment.

Rat mesenteric microcirculation was examined using a Nikon Eclipse E600FN Microscope equipped with a Photometrics Cascade 512F digital camera under a 10X working distance objective (Technical Instruments, Burlingame, CA). The diameter of resistance arterioles and postcapillary venules were measured. For measurement of plasma protein extravasation, rats were given an intravenous bolus of FITC-albumin at 100 mg/kg of body weight, followed by continuous infusion at 0.15 mg/kg/min to maintain a constant plasma tracer concentration. Mesentery preparation was equilibrated for 30 minutes to establish a steady baseline, prior to image collection. Fluorescent images were analyzed using Simple PCI version 5.3.1 software

(Compix Imaging Systems; Cranberry Township, PA). Fluorescence intensity was measured from windows positioned inside (Ii) and outside (Io) a selected venule. Albumin transvascular flux was determined from the ratio of the transmural fluorescence intensity difference to the initial intravascular intensity normalized to background intensity, and calculated as $1 - (Ii - Io) / Ii$ [28].

Capillary filtration coefficient (K_{fc}) measurement

Wild-type (WT) C57BL6 mice (weighing 25–30 g) were used for isolated perfused lung experiments and K_{fc} measurement analysis, following the protocol described [29]. The isolated-perfused mouse lung was instrumented with arterial cannula at the base of the pulmonary artery and left atrial cannula, and ventilated (186 breaths/min) and perfused with 3% albumin-krebs 37°C solution at a constant rate of 2 mL/min for 20 minutes to equilibrate. All preparations were mechanically ventilated and arterial and venous pressures were monitored continuously throughout the experiment. Perfusion pressure of lung preparations varied from 7 to 12 cm³ H₂O, and remained within ~1 cm³ H₂O of the initial value over the course of an experiment.

The capillary filtration coefficient (K_{fc}) was measured to determine pulmonary microvascular permeability to liquid, as described [29]. After perfused lungs were equilibrated for 20 minutes, γ C was infused for 5 minutes via cannulated pulmonary artery at a rate of 0.2 mL/min, at a final concentration of 10 μ g/mL with or without pre-perfused FAK inhibitor (PF-573228, 1 μ M), or Src inhibitor (PP2, 10 μ M) for 30 minutes. Lung wet weight changed in a ramplike fashion, emulating net fluid extravasation. At the end of the experiment, lungs were dissected free of non-pulmonary tissue, and lung dry weight was determined in order to calculate K_{fc} , which was measured as slope of recorded weight change normalized to pressure change and lung dry weight.

Animals

The protocols using rats (Sprague-Dawley) and mice (C57BL6 wild type) were approved by the Institutional Animal Care and Use Committee (IACUC) at the University of South Florida and were in accordance with the National Institutes of Health Guides for the Care and Use of Laboratory Animals and the guidelines of the Animal Welfare Act published by the US National Institutes of Health (NIH Publication ON. 85–23, revised 1996).

Cell culture

Rat Lung Microvascular Endothelial Cells (RLMVECs) were cultured in gelatin-coated 100 mm dishes, 6-well plates, ECIS assays or chambered glass microwells. Cells were incubated in a 5% CO₂ humidified incubator at 37°C to reach confluence 2–3 days prior to experiments.

Recombinant fibrinogen C-terminal domains

Recombinant γ C fragment (residue 151–411, 30 kD) was produced as previously described [5]. Its cDNA was cloned into the pET21a vector and overexpressed in *E. coli*. Then, the recombinant protein was renatured through urea step gradient and refolded by dialysis. The refolding buffer was exchanged for PBS, followed by detoxification, in which the final product was suspended in endotoxin-free PBS.

Gene silencing

Transfection with FAK or Src siRNA duplexes (see Supplementary Materials and Methods) were conducted by electroporation using Nucleofector™ II Device (Lonza, Amaxa™

Biosystems; Cologne, Germany) as previously described [30]. Briefly, cells were trypsinized, pelleted, and resuspended in Basic Endothelial Nucleofector Solution containing siRNA duplexes [0.4 μ M]. Immediately after electroporation with program T-011, cell suspension was mixed with 500 μ L of pre-warmed MCDB-131 complete medium and seeded on 100 mm dishes, 6-well plates, or ECIS arrays. Endothelial cells were treated as designed 48 hours post-transfection.

Transendothelial Electrical Resistance (TER)

Endothelial barrier function was determined by measuring transendothelial resistance using an electric cell-substrate impedance sensing (ECIS; Z theta; Applied Biophysics, Inc.) system [31]. RLMVECs were subcultured onto the ECIS electrode arrays at 1×10^5 cell/cm², and allowed to reach two-days post-confluence. A 1 V, 4,000 Hz alternating signal was connected serially through a 1 M Ω resistor between the two electrodes to supply a constant current of 1 μ A. The in-phase voltage (proportional to resistance) and the out-of-phase voltage (proportional to capacitive resistance) were measured and analyzed with ECIS_Core software (v1.2.210.1 Mac; Applied BioPhysics, Inc.). ECIS tracings of TER are presented as either resistance (Ohms) or normalized change in resistance, i.e. normalized to baseline resistance at time of stimulus with gamma C peptides.

Rho activity assay

Rho activation in endothelial cells was assessed using a Rho-GTP pulldown assay kit as previously described [25]. Briefly, confluent endothelial cells were serum deprived in EBM medium with 0.5% FBS for 4 hours prior to treatment. Cells were washed twice with TBS and lysed in Mg²⁺ lysis/wash buffer [MLB: 25 mM HEPES (pH 7.5), 150 mM NaCl, 1% Igepal CA-630, 10 mM MgCl₂, 1 mM EDTA, 10% glycerol, 10 μ g/mL leupeptin, 25 mM NaF, and 1 mM vanadate] with protease/phosphatase inhibitor cocktail. Cell lysates were incubated with Rhotekin-Rho-binding domain on a rotator at 4°C for 1 hour. The beads were washed 3 times with MLB and incubated in 2 \times SDS sample buffer at 95°C for 5 minutes to elute protein. Active RhoA was then separated by SDS-PAGE and detected by immunoblotting.

Immunocytochemistry

RLMVECs were cultured on gelatin-coated glass bottom microwells to confluency. Immunocytochemistry was performed per standard protocols and as we have previously described [32]. Briefly, after appropriate treatments, cells were fixed with 4% PFA and permeabilized with 10% donkey serum containing 0.05% Triton X-100. After blocking, cells were immunostained with VE-cadherin (VE-cad) and β -catenin (β -cat) antibodies at 4°C overnight and appropriate fluorescent conjugated antibodies for 1 hour at RT. F-actin was stained by Alexa Fluor 647-phalloidin (2,000 U/mL, 20 minutes) at room temperature. Slides were mounted in Vectashield containing DAPI and imaged with a FLUOVIEW FV1000 confocal laser scanning microscope (Olympus) using a 60X objective (UPLFLN 60X OI NA:1.25). Confocal micrograph stacks were analyzed and processed with Imaris (Bitplane) or NIH ImageJ. As an indicator of adherens junction integrity (Fig 6), intensity analyses of VE-cadherin and β -catenin were measured at cell-cell junctions and quantified in three different ways: 1) VE-cad/ β -cat colocalization—Pearson's correlation coefficient was derived from their scatterplots (Fig 6B); 2) the total surface area of gaps between cells within the RLMVEC monolayer (Fig 6D); or 3) as disruptions in pixel-to-pixel tracings of positive VE-cadherin staining at cell-cell contacts (Fig 6E). As an indicator of stress fiber formation, phalloidin staining was quantified by either

total intensity within the micrograph (Fig 7B); or intensity of cytoplasmic and perinuclear ROI's (Fig 7C).

Western blotting

RLMVECs were grown to confluence in MCDB-131 complete medium, treated as designed, and lysed in lysis buffer [20 mM Tris (pH 7.4), 2.5 mM EDTA, 1% Triton X-100, 1% deoxycholic acid, 0.1% SDS, 100 mM NaCl, 10 mM NaF, 1 mM Na₃VO₄] containing protease/phosphatase inhibitor cocktail. Lysates were collected and clarified by centrifugation at 13,000 g for 20 minutes, prior to SDS-PAGE, and transferring proteins to PVDF membranes. Blots were then blocked using 5% BSA in TBST (TBS containing 0.5% Tween20) for 1 hour, followed by overnight incubation at 4°C on a rocker in 1:1000 dilution of the primary antibody of interest. The following day, membranes were washed three times for 5 minutes each with TBST, the membrane was incubated with a corresponding horseradish peroxidase (HRP) conjugated secondary antibody for 1 hour at room temperature. Membranes were washed after secondary incubation three times for 5 minutes each with TBST, and protein bands were visualized by chemiluminescence.

Immunoprecipitation

RLMVECs were washed once with PBS and lysed in IP lysis buffer (20 mM Tris-Cl (pH 7.5), 150 mM NaCl, 1% Triton X-100, 1 mM EDTA, 1 mM EGTA, 2.5 mM sodium pyrophosphate, 1mM β -glycerol phosphate, 1 mM Na₃VO₄) containing protease/phosphatase inhibitor cocktail. The lysates were clarified by centrifugation at 14,000 rpm for 10 minutes, and supernatants were incubated in 1 μ g of corresponding antibody with gentle rocking overnight at 4°C. The following morning, samples were incubated with protein A-Sepharose suspension at 4°C for 1 hour. The beads were washed 3 times in the IP lysis buffer, heated in 2x SDS sample buffer at 95°C for 5 minutes, and resolved on SDS-PAGE followed by immunoblotting.

Statistical analyses

All statistics were performed using GraphPad Prism (version 6.0f). Unless otherwise noted, all data represent the mean and s.e.m. Unpaired, two-tailed, T-tests were used for pairwise comparisons and One-way ANOVA with Tukey's post-hoc analysis was used for comparisons of 3 or more groups. α was set at 0.05 *a priori* for statistical significance.

Results

γ C-induced microvascular leakage and endothelial barrier dysfunction

We began our study by testing the effect of γ C on cultured RLMVECs. Transendothelial electrical resistance (TER) was obtained using ECIS arrays, after RLMVECs were plated and grown to 2-day post-confluence. We found that °C induces barrier dysfunction in a dose-related manner (Fig 1C). Using 10 μ g/mL as an effective dosage, the impact of °C on rat mesenteric microvascular leakage was tested. Using intravital microscopy, FITC-albumin flux was observed after perfusion of °C or vehicle control into mesenteric microcirculation. °C treatment increased microvascular leakage of albumin throughout the time intervals of 5, 10 and 30 minutes (Fig 1A). The albumin transvascular flux was recorded as control vs. °C treatment (Fig 1B) for the given time intervals. *In vivo* and *in vitro* experiments denoted the harmful effect of γ C on the endothelial barrier.

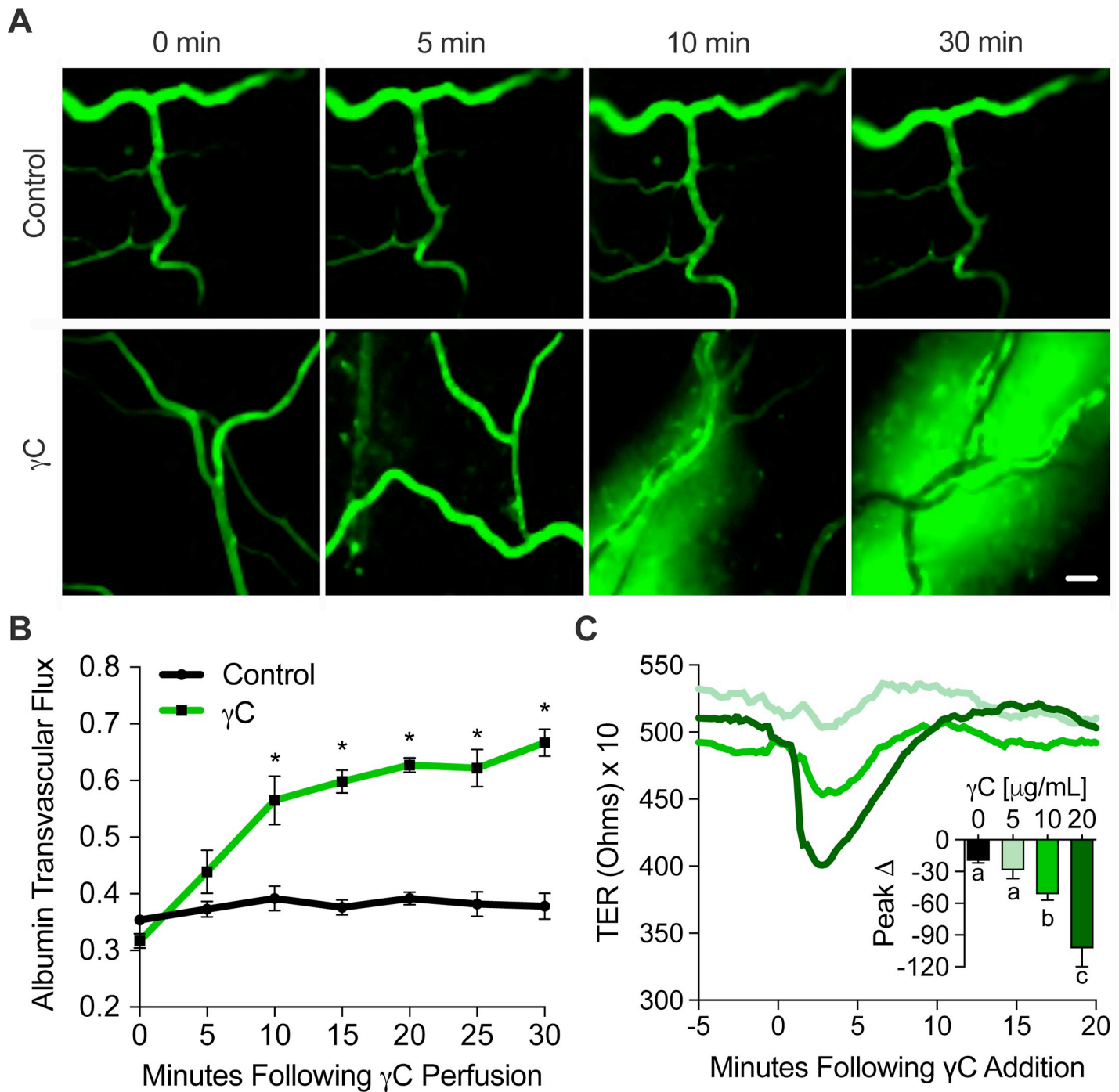


Fig 1. γ C induces microvascular hyperpermeability and endothelial barrier dysfunction. Rat proximal ileum mesenteric microcirculation was exteriorized on microscopic platform. FITC-Albumin was allowed to equilibrate through circulation prior to treatment with γ C (10 μ g/mL). (A) Leakage of γ C was observed at 5 minutes and continued throughout the recorded duration of 30 minutes, representative images taken at 0, 5, 10, and 30 minutes are shown, scale bar = 40 μ m. (B) Quantitative analysis showing increased albumin transvascular flux across mesenteric microvessels with γ C treatment vs. control. Data represent means \pm s.e.m. * indicates $p < 0.05$ vs. timepoint 0, (n = 4). Primary rat lung microvascular endothelial cell (RLMVEC) monolayers grown in ECIS arrays and treated with γ C dosages of 5, 10, and 20 μ g/mL while transendothelial resistance (TER) measurements were recorded (C) Representative TER tracings are shown and peak TER reduction representing barrier dysfunction was calculated by subtracting the lowest resistance following γ C addition to media. Embedded bar graphs represent the mean peak change and s.e.m. Groups with the same letter are not significant from each other ($p > 0.05$), (n = 4).

<https://doi.org/10.1371/journal.pone.0231739.g001>

FAK inhibition attenuates γ C-induced microvascular leakage and barrier dysfunction

Since FAK has been implicated in integrin-mediated barrier dysfunction [10] and previous experiments denote the binding of γ C to integrin α v β 3 [5], we sought to deduce the role of FAK in γ C-induced microvascular hyperpermeability. Rat ileum mesenteric microvessels were pretreated with pharmacological inhibitor (PF573228 at 1 μ M for 30 minutes) prior to γ C or vehicle control treatment and FITC-albumin flux was measured via intravital microscopy (Fig 2A and 2B). The capillary filtration coefficient (K_{fc}) was measured via perfusion of a cannulated mouse pulmonary artery with γ C (10 μ g/mL) with or without pre-treatment of FAK inhibitor (PF573228, 1 μ M, 30 minutes). Data show that FAK inhibition reduces γ C-induced microvascular hyperpermeability (Fig 2C). After growing RLMVECs on ECIS arrays to 2-day post-confluence, TER was measured and showed that treatment with PF573228 attenuates γ C-induced barrier dysfunction (Fig 2D). Immunoblotting shows that γ C induces phosphorylation of FAK Y397 in a dose-related manner (Fig 2E). Using γ C dose of 10 μ g/mL, since it caused a significant drop in barrier function using TER measurement (Fig 1C), we demonstrated an increase in phosphorylation of FAK (Y397) that was temporally consistent with γ C-induced barrier dysfunction (Fig 2F). All western blot analysis showed no noticeable difference in total FAK expression. Taken together, these data suggest that γ C-induced endothelial barrier dysfunction and vascular hyperpermeability are dependent on FAK activity.

Src inhibition attenuates γ C-induced microvascular leakage and barrier dysfunction

Once activated through phosphorylation of Y416, Src can phosphorylate many proteins involved in regulation of the endothelial barrier [20, 26, 33], therefore we asked whether Src activation was involved in γ C-elicited microvascular leakage. Analysis of albumin transvascular flux shows quantification of γ C-induced microvascular leakage is attenuated in response to Src inhibition with PP2 (Fig 3A and 3B). The capillary filtration coefficient (K_{fc}) was measured via perfusion of a cannulated mouse pulmonary artery with γ C (10 μ g/mL) with or without pre-treatment of Src inhibitor (PP2, 10 μ M, 30 minutes). Results show that Src inhibition reduces γ C-induced microvascular hyperpermeability (Fig 3C). *In vitro* studies show Src pharmacological inhibitor (PP2) attenuated γ C barrier dysfunction, using TER as a measurement of endothelial barrier function (Fig 3D). Immunoblotting shows that γ C increases phosphorylation of Src (Y416) in a dose-related manner (Fig 3E). Using γ C [10 μ g/mL] treatment, we determined that γ C-induced Src phosphorylation at Y416 is temporally consistent with FAK phosphorylation and barrier dysfunction (Fig 3F). All western blot analyses showed no noticeable difference in total Src expression. Taken together, these data imply that Src activation was necessary for γ C-elicited barrier dysfunction and microvascular hyperpermeability.

γ C-induced Src activation requires FAK

To confirm that gene silencing of FAK and Src warranted similar effects on γ C induced barrier dysfunction as pharmacological inhibition (shown in Figs 2 and 3), we transfected RLMVECs monolayers with two sets of pooled siRNA sequences for both FAK and Src to ensure the effectiveness of FAK or Src knockdown before the treatment with γ C (10 μ g/mL) and quantification of the peak TER reduction using ECIS assays. The information of these pooled siRNAs is detailed in Supplementary Material. Gene silencing of FAK and Src attenuated γ C-induced barrier dysfunction (Fig 4A–4F). Given that FAK acts as an upstream regulator of Src [7, 34, 35], we investigated whether FAK is also an upstream regulator of Src in γ C-induced barrier

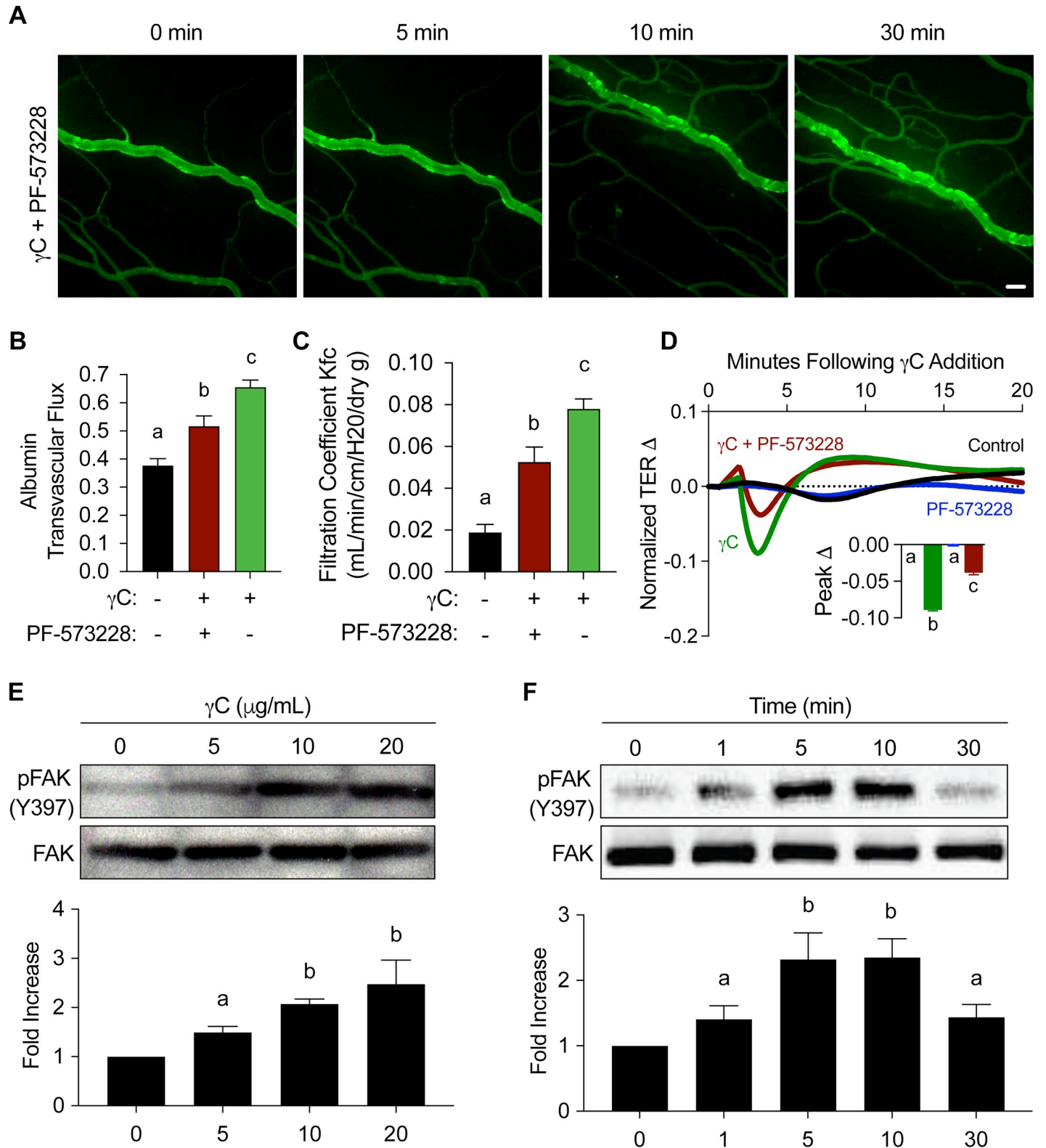


Fig 2. FAK inhibition reduces γ C-induced microvascular hyperpermeability and barrier dysfunction. Rat proximal ileum mesenteric microvessels were exteriorized on microscopic platform, equilibrated with FITC-Albumin, pretreated with FAK inhibitor (PF573228, 1 μ M) for 30 minutes prior to 10 μ g/mL γ C treatment. A) Visualization of rat ileum microvessels treated with FAK inhibitor prior to γ C treatment show reduced microvascular leakage at 5, 10, and 30 minutes when compared to γ C only treatment (Fig 1A). Images are representative of four individual experiments. Scale bar = 40 μ m. B) Quantitative analysis of albumin transvascular flux at 10

min was compared with control and γ C only treatment values obtained from Fig 1A, (n = 4). C) While perfusing isolated mouse lung preparations, capillary filtration coefficients (K_{fc}) were measured and demonstrated elevated fluid filtration in response to γ C which was reduced when pretreated with PF573228, (n = 4). D) RLMVEC monolayers in ECIS arrays were treated with PF573228 (1 μ M) prior to addition of γ C (10 μ g/mL). Representative ECIS tracing of normalized change in TER are shown with a bar graph insert of the mean peak changes, (n = 4). E-F) RLMVECs were treated with γ C dosages of 0, 5, 10, and 20 μ g/mL (E) and 10 μ g/mL at indicated time points of 0, 1, 5, 20, 30 minutes (F) followed by detection of total FAK and phospho-FAK Y397 specific antibodies. Blots and average optical densities are representative of three independent experiments (n = 3). Bar graphs represent the means \pm s.e.m. Groups with the same letter are not significant from each other (p > 0.05).

<https://doi.org/10.1371/journal.pone.0231739.g002>

dysfunction. RLMVEC monolayers were transfected with FAK siRNA or pretreated with PF573228 before application of γ C (10 μ g/mL). Western blot analysis found that inhibition of FAK via pharmacological inhibitor PF573228 or FAK siRNA greatly attenuated γ C-induced increase in Src phosphorylation of Y416 (Fig 4G and 4H). All western blot analysis showed no noticeable difference in total Src expression.

FAK and Src activation mediate γ C-mediated Adherens Junction (AJ) dissociation

In order to determine the mechanism by which the barrier is being disturbed, we sought to establish a relationship between γ C-induced barrier dysfunction and junctional proteins. As indicated by immunoprecipitation of both VE-cadherin (VE-cad) and β -catenin (β -cat), we found that γ C caused VE-cad/ β -cat uncoupling which was attenuated by inhibition of FAK and Src (Fig 5A and 5B). Additionally, γ C was found to induce VE-cad phosphorylation of residue Y658 in a dose-related manner (Fig 5C). Pharmacological inhibition of FAK and/or Src using PF573228 and PP2, respectively, reduced γ C-induced VE-Cadherin phosphorylation of Y658 (Fig 5D and 5E). Furthermore, the cultured ECs with reduced level of FAK by siRNA treatment displayed attenuated phosphorylation of VE-Cadherin Y658 (data not shown).

Immunocytochemistry experiments further demonstrate the effect of γ C on junctional protein uncoupling and gap formations in RLMVECs (Fig 6). Using immunofluorescence confocal microscopy showed that γ C induces junctional protein dissociation, as indicated by decreased VE-cad and β -cat colocalization that was attenuated by FAK or Src pharmacological inhibition (Fig 6A and 6B). Additionally, 3D-representation of the VE-cad junctional staining (Fig 6C and 6D) demonstrates that Src and FAK inhibition rescues γ C-induced gap formations at cell-cell borders, which was quantified as total surface area of gaps (Fig 6D), or non-continuous staining around cell borders (Fig 6E).

FAK and Src in RhoA-dependent γ C-induced endothelial barrier dysfunction

Our final experimental finding deduced the relationship between γ C and GTP-Rho. To investigate whether FAK and/or Src activation influences cytoskeleton arrangement, F-actin morphology was revealed by AF-647 conjugated phalloidin staining and confocal microscopy (Fig 7A–7C). γ C (10 μ g/mL) treatment heightened F-actin stress fiber formation with dense and rough outlines in the cytoplasm and perinuclear regions of RLMVECs. Pharmacological inhibition of FAK and Src, using PF573228 (1 μ M) and PP2 (10 μ M) respectively, reduced γ C-induced stress fiber formation (Fig 7A–7C). Active RhoA, GTP-RhoA, is known to induce cytoskeleton rearrangement [36, 37], and since FAK and Src are implicated in cell contractility mechanisms regulated by RhoA [21, 38], we tested whether inhibition of FAK and/or Src effected γ C-induced RhoA activation. Using a RhoA GTPase pull-down assay as an indicator of RhoA activation, in cultured RLMVECs we demonstrated that γ C induced activation of RhoA was attenuated by FAK or Src inhibition (Fig 7D–7F). To further elucidate the role of FAK and Src, we showed that siRNA knockdown of FAK and Src independently reduced γ C-

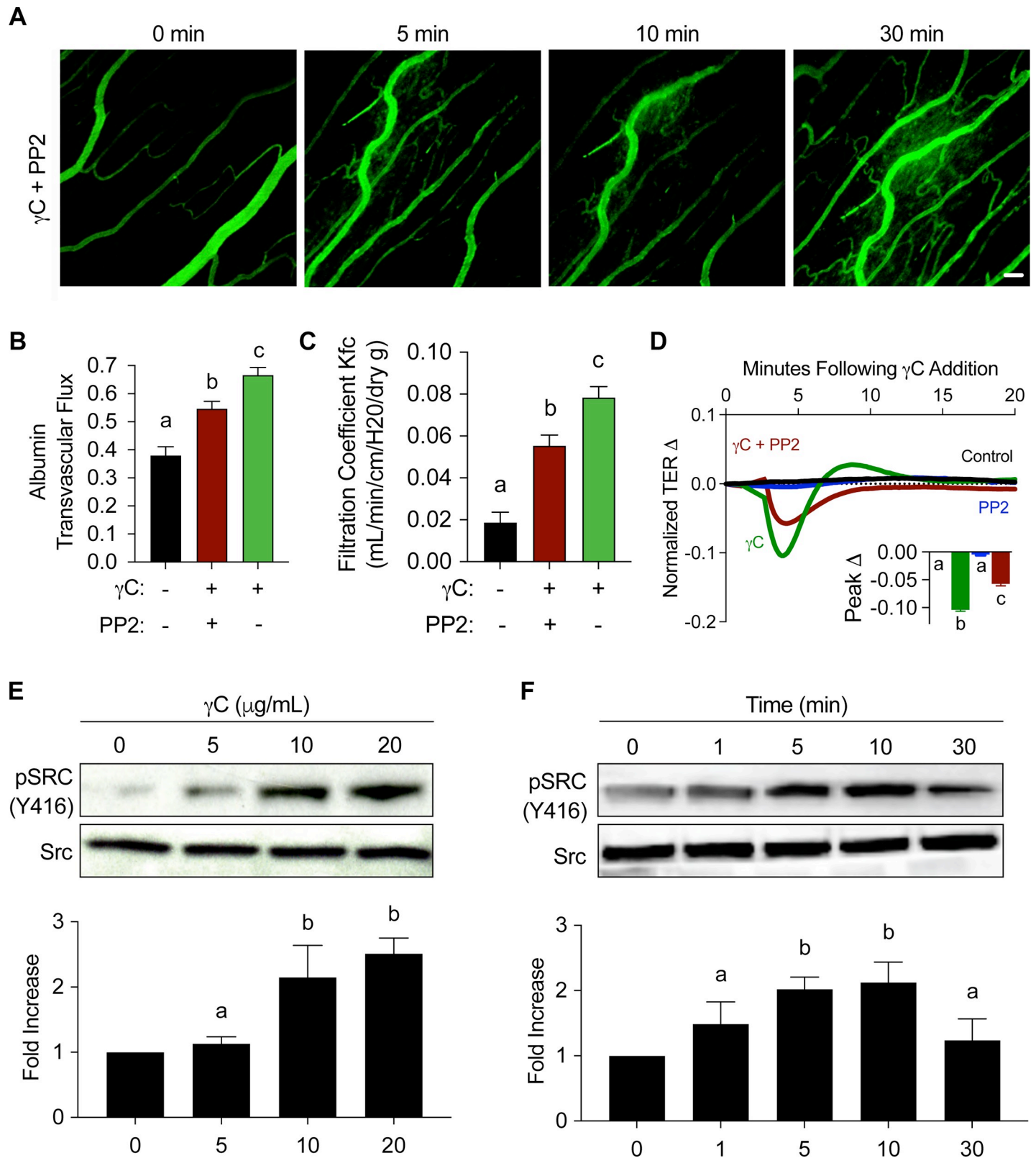


Fig 3. Src inhibition reduces γ C-induced microvascular hyperpermeability and barrier dysfunction. Rat proximal ileum mesenteric microvessels were exteriorized on microscopic platform, equilibrated with FITC-Albumin, pretreated with Src inhibitor (PP2, 10 μ M) for 30 minutes prior to γ C (10 μ g/mL). A) Visualization of rat ileum microvessels treated with PP2 prior to γ C treatment show reduced microvascular leakage at 5, 10, and 30 minutes when compared to Fig 1A γ C only treatment.

Images are representative of four individual experiments. B) Quantitative analysis of albumin transvascular flux (10 mins) shown in Fig 3A compared with control and γ C only treatment values obtained from Fig 1A, demonstrate that PP2 attenuates γ C effect on albumin transvascular flux by approximately 50% ($n = 4$). C) Using isolated perfused mouse lung preparations, demonstrates elevated capillary filtration coefficient (K_{fc}) in response to γ C and an approximate 35% reduction when pretreated with PP2, ($n = 4$). D) RLMVECs were grown on ECIS arrays, pretreated with PP2 (10 μ M) and then γ C (10 μ g/mL). Peak TER reduction representing barrier dysfunction was calculated showing an approximate 50% attenuation of γ C response with Src inhibition ($n = 4$). E-F) RLMVECs were treated with γ C dosages of 0, 5, 10, and 20 μ g/mL and 10 μ g/mL at indicated time points of 0, 1, 5, 20, 30 minutes followed by detection of total Src and Phospho-Src Y416 specific antibodies. γ C-induced phosphorylation of Src (Y416) in a dose-related manner and peak Src phosphorylation (Y416) was seen at 10 minutes (E) Blots and average optical densities are representative of three independent experiments, ($n = 3$). Bar graphs represent the means \pm s.e.m. Groups with the same letter are not significant from each other ($p > 0.05$).

<https://doi.org/10.1371/journal.pone.0231739.g003>

mediated activation of GTP-Rho (Fig 7D). All blot analysis showed no noticeable difference in total Rho expression.

Discussion

Although the roles of FAK and Src have been implicated in endothelial barrier dysfunction caused by various inflammatory mediators [10, 20, 26, 39], their specific effects in FDP- γ C-induced vascular leakage have not been reported. Within this study we demonstrate 1) γ C induces microvascular hyperpermeability *in vivo* and endothelial barrier dysfunction in cultured endothelial cells; 2) The activation of FAK and Src contribute to the endothelial barrier alteration in response to γ C; 3) FAK activates Src through an increase of phosphorylation at residue Y416; 4) γ C-induced FAK and/or Src activity promotes AJ dissociation; and 5) FAK and/or Src regulate γ C-induced RhoA activation and F-actin stress fiber formation. To the best of our knowledge, our study provides the first line of evidence demonstrating cellular signaling mechanisms involved in γ C-induced microvessel hyperpermeability. Increase of circulating D-dimer, one of the major FDPs has been clinically associated with thrombotic disorders and systemic inflammation [4, 40]. Whether more specific biomarkers, such as γ C can be used as a predictor of trauma severity warrants further investigation. In our study, the effect of γ C on permeability in the animal model produced a slower initial response but a longer duration in comparison to the effect in cultured endothelial cells. The observation was consistent with our previously published data [5]. The longer time course of hyperpermeability *in vivo* is likely contributed by the complexity of vascular tissue structure and the impact of blood circulation including delayed contact between γ C and endothelium, involvement of glycocalyx and participation of plasma proteins, blood cells that could produce a longer hyperpermeability effect. We further complement cell culture techniques with animal models to provide direct evidence for the involvement of FAK/Src signaling in endothelial barrier hyperpermeability caused by γ C. Moreover, immunoprecipitation assay, immunofluorescence labeling, and immunoblotting demonstrate that γ C-mediated FAK and Src activation is capable of catalyzing downstream pathways leading to AJ disassembly, and endothelial cytoskeleton contractibility to induce endothelial barrier dysfunction. Currently, some FAK and Src inhibitors have been tested to examine their roles in cell migration and angiogenesis for the beneficial effect in cancer treatment [33, 41]. In our study, we provide a new perspective of these inhibitors, which has the potential to rescue endothelial barrier dysfunction in post severe trauma.

FAK is a well-established key-regulator of Src and RhoA pathways, the activation of which lead to cell-cell junction loosening, cytoskeleton contractility, and vascular hyperpermeability [12, 20, 34]. Several lines of evidence have demonstrated that inhibition of FAK effectively blocks endothelial barrier dysfunction [7, 13, 14]. For instance, it was reported that blocking FAK activation by FRNK (FAK-related non-kinase) reduced activated neutrophil-induced vascular leakage [13]. FAK inhibitor (PF573228) has been shown to attenuate AGES-induced and Tys (analog of sphingosine 1-phosphate)-induced TER elevation [16, 35]. While both FAK

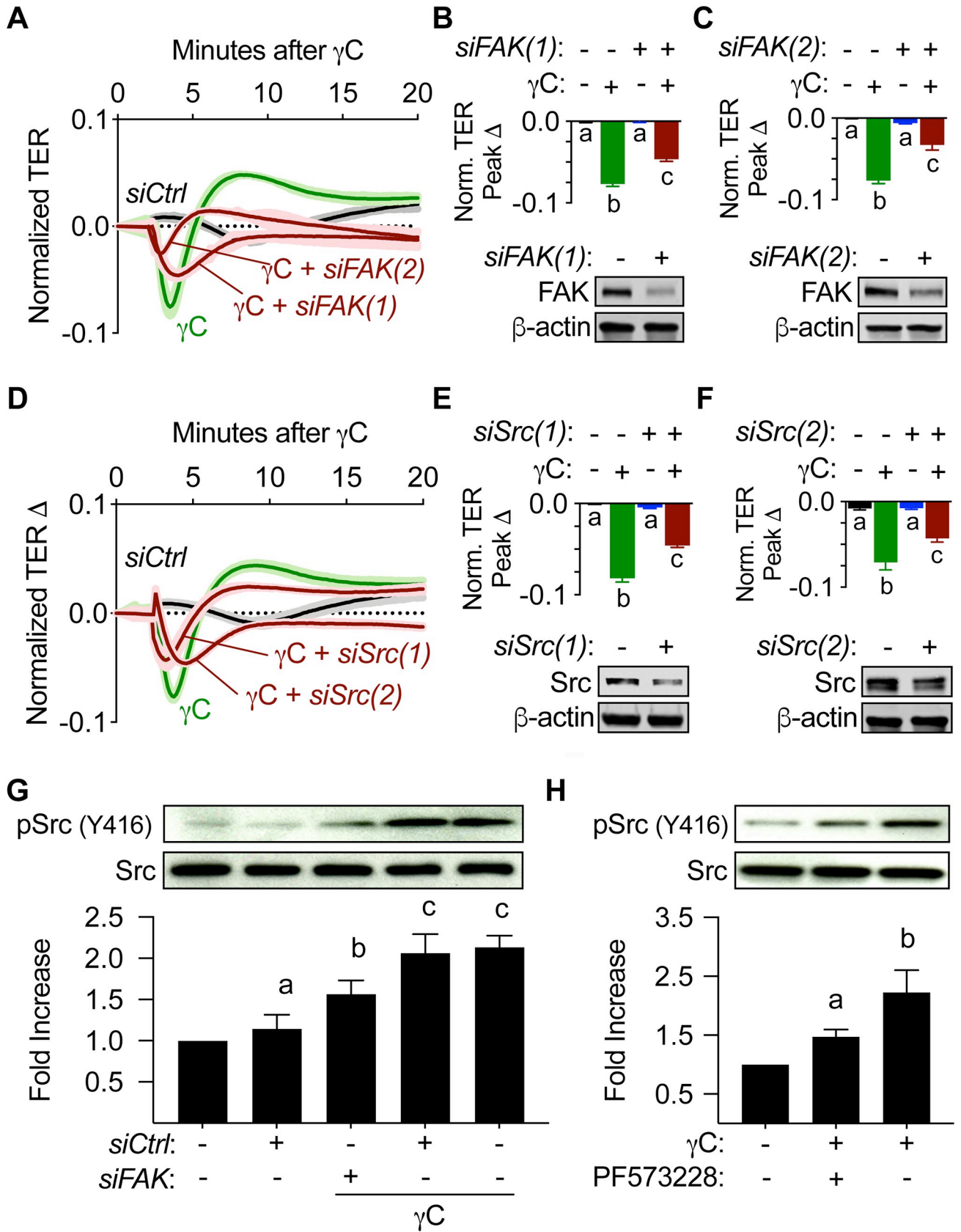


Fig 4. siRNA knockdown of FAK and Src reduces γ C-induced barrier dysfunction and FAK inhibition reduces phosphorylation of Src (Y416). RLMVECs were grown on ECIS arrays and transfected as indicated with two independent pools of siRNA duplexes targeting *FAK*, *siFAK(1)* and *siFAK(2)*, or *Src*, *siSrc(1)* and *siSrc(2)*, prior to treatment with γ C (10 μ g/mL). A) ECIS tracings comparing the effect of FAK knockdown with *siFAK(1)* and *siFAK(2)* on γ C-mediated barrier dysfunction (n = 4). B,C) Peak TER reduction in response to γ C (top) was attenuated by FAK knockdown with both (B) *siFAK(1)* and (C) *siFAK(2)* siRNA duplex pools (n = 4). Representative blots (bottom) confirm knockdown. D-F) similar effects of gene silencing with *siSrc(1)* and *siSrc(2)* (n = 4) on ECIS tracings, peak TER and representative blots (bottom) to confirm knockdown. G) RLMVECs treated with *siFAK(1)* displayed a significant reduction of γ C-induced Src phosphorylation (Y416) relative to the cells treated with control siRNA, (n = 4). H) Similarly, the cells treated with FAK inhibitor (PF573228, 1 μ M) for 30 minutes, prior to 10-minute γ C (10 μ g/mL) treatment, reduced γ C-induced Src phosphorylation. TER calculations, blots and average optical densities are representative of four independent experiments, (n = 4). ECIS tracings and bar graphs represent the mean \pm s.e.m. Groups with the same letter are not significant from each other (p > 0.05).

<https://doi.org/10.1371/journal.pone.0231739.g004>

and Src independently initiate distinct pathways, FAK is responsible for Src activation through FAK autophosphorylation on Y397, which creates a binding site for SH2 domain of Src, allowing Src to autophosphorylate residue Y416 [7, 34, 42]. FAK mediates the association of Src with focal adhesions using the SH2 domain [34]. FAK inhibitor Y15 reduced Src phosphorylation in colon cancer cells in a dose-dependent manner [43]. Consistent with these reports, our current data reports that FAK inhibition or genetic knockdown diminishes γ C-induced Src phosphorylation, therefore suggesting that FAK is upstream of Src.

Our study also supports the well-established link that Src plays in endothelial barrier function [11, 20, 26, 27]. Src remains in an inactive state through association with the SH2 domain and Y527 [44]. Upon activation, Y527 dephosphorylates causing destabilization of the SH2, SH3 and other kinase domains, and Y416 autophosphorylation [7, 44]. γ C-induced barrier leakage involves phosphorylation of Src Y416, a critical phosphorylation site also known to be responsible for mediating thrombin barrier dysfunction [45]. Activated neutrophils also stimulate Src activity through phosphorylation of residue Y416, thus mediating barrier dysfunction in human endothelial cells and hyperpermeability in porcine coronary venules [20]. While our data supported that γ C increases tyr416 phosphorylation of Src, an event known to upregulate Src activity by using a phospho-specific antibody against Src, the same antibody also recognizes similar phosphorylated sites in other Src family kinases such as Yes, Fyn and Lyn [46, 47]. Therefore, our data do not exclude the potential effect on the endothelial barrier function by γ C through other Src family kinases. Further experimentation revealed that Src inhibitor PP2 attenuated γ C-induced albumin hyperpermeability in rat mesenteric microvessels and attenuated drop in TER in cultured monolayers. These data supported other studies that demonstrate improved endothelial barrier function upon treatment with PP2 [16, 27, 33]. Src inhibitors protect monolayers from increased permeability through regulation of AJ proteins [16, 19, 45]. Junctional protein regulation can be triggered by Src mediated intracellular signaling events [48]. We show that γ C-mediated VE-Cadherin phosphorylation in a Src-dependent manner, supporting the established role that Src serves as a key element regulating junctional disorganization in response to many inflammatory mediators.

The integrity of the endothelial barrier is largely dependent on AJ at cell-cell contact and many inflammatory mediators promote vascular hyperpermeability through AJ signaling pathways [20, 31, 36]. Our results indicate that γ C promotes phosphorylation of VE-Cadherin at Y658 in a dose-dependent manner, followed by subsequent barrier dysfunction through AJs dissociation, which are regulated by FAK and Src activation. Consistent with our findings, other groups have also reported that increase in VE-Cadherin phosphorylation leads to AJ opening and barrier dysfunction [19, 31–49]. Integrin antagonist cilengitide induces VE-Cadherin phosphorylation at Y658 and Src inhibition attenuates phosphorylation at this residue and reduces cilengitide-induced disappearance of VE-Cadherin at the cell-cell contacts [50]. Additional studies have supported the role of FAK-mediated AJ dissociation [8, 39]. In our study, siRNA knockdown or pharmacological inhibition of FAK or Src significantly improved

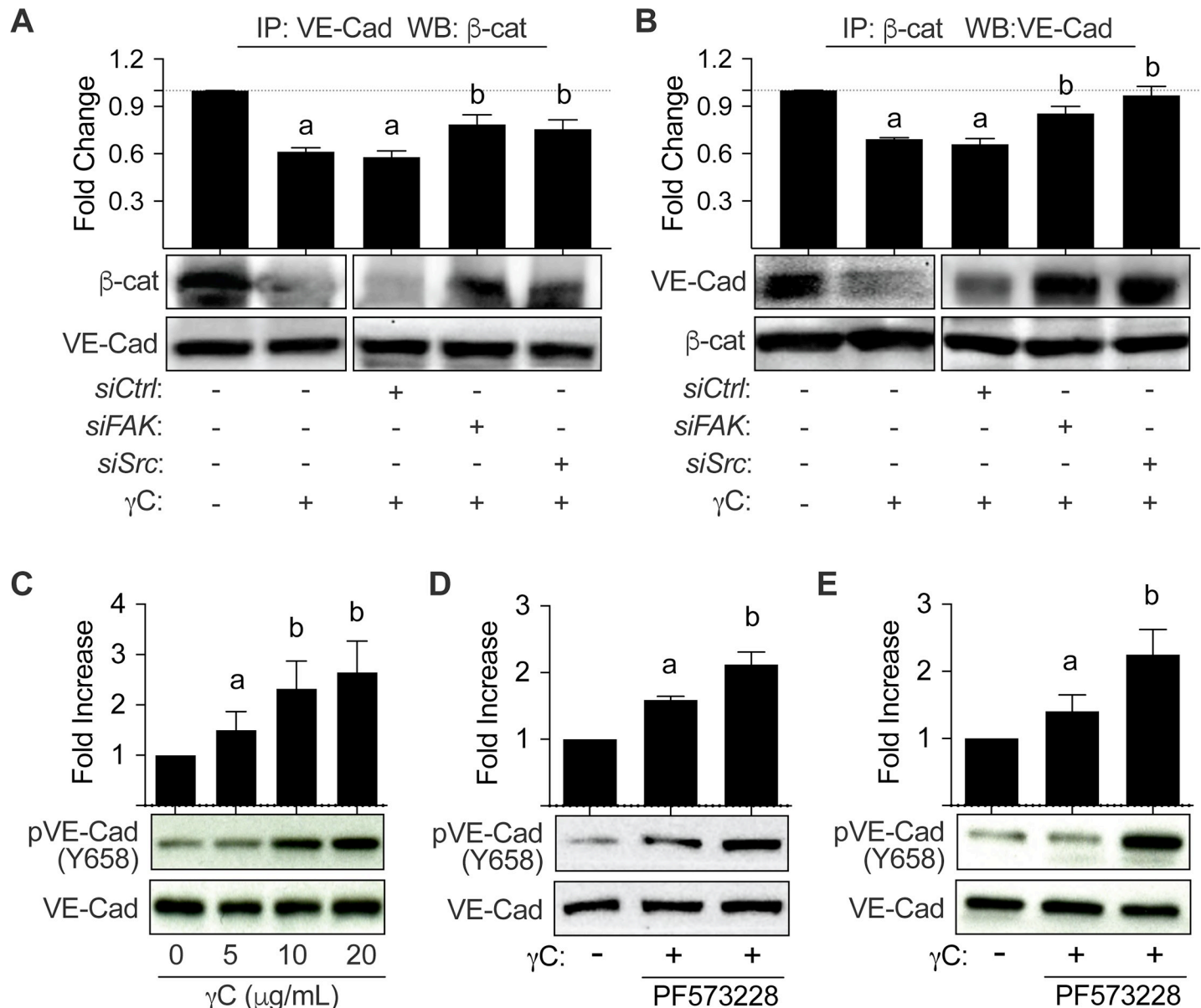


Fig 5. FAK and Src inhibition rescues γ C induced barrier dysfunction through Adherens Junction (AJ) dissociation. RLMVECs were grown to 70% confluency, transfected with control, FAK, or Src siRNA, and then treated 48 hours post-transfection with γ C (10 μ g/mL) or vehicle control for 10 minutes followed by immunoprecipitation of VE-cad and blotting against β -Catenin (A) or by immunoprecipitation of β -Catenin and blotting against VE-cad (B). Densitometry analysis of these data indicates that γ C resulted in a significant reduction in VE-cad and β -cat co-immunoprecipitation, which was attenuated by both FAK and Src siRNA-mediated silencing (n = 3) C) RLMVECs were treated with indicated concentration of γ C for 10 minutes. Cells were lysed and analyzed for VE-cad phosphorylation (pY658). γ C induced a concentration dependent increase in phosphorylation of VE-cad Y658, (n = 4). D) RLMVECs were treated with vehicle control or FAK inhibitor (PF573228, 1 μ M) for 30 minutes, prior to γ C (10 μ g/mL) for 10 minutes, and then lysed and analyzed for pVE-cad Y658. FAK inhibition reduced the increased phosphorylation of VE-Cadherin by γ C, (n = 4). E) RLMVECs were treated with vehicle control or Src inhibitor (PP2, 10 μ M) for 30 minutes prior to γ C (10 μ g/mL) for 10 minutes, and then lysed and analyzed for pVE-cad Y658. Src inhibition attenuated γ C-induced VE-cad (Y658) phosphorylation (n = 4). Bar graphs represent the mean \pm s.e.m. Groups with the same letter are not significant from each other (p > 0.05).

<https://doi.org/10.1371/journal.pone.0231739.g005>

AJ protein disorganization in response to γ C and attenuated vascular hyperpermeability in γ C-treated lung and mesenteric microvasculature. Downregulation of FAK by siRNA in cultured cells attenuated the increase of VE-Cadherin phosphorylation at Y658 by γ C. FAK appears to modulate AJ activity by facilitating the transportation of c-Src to AJs, where Src

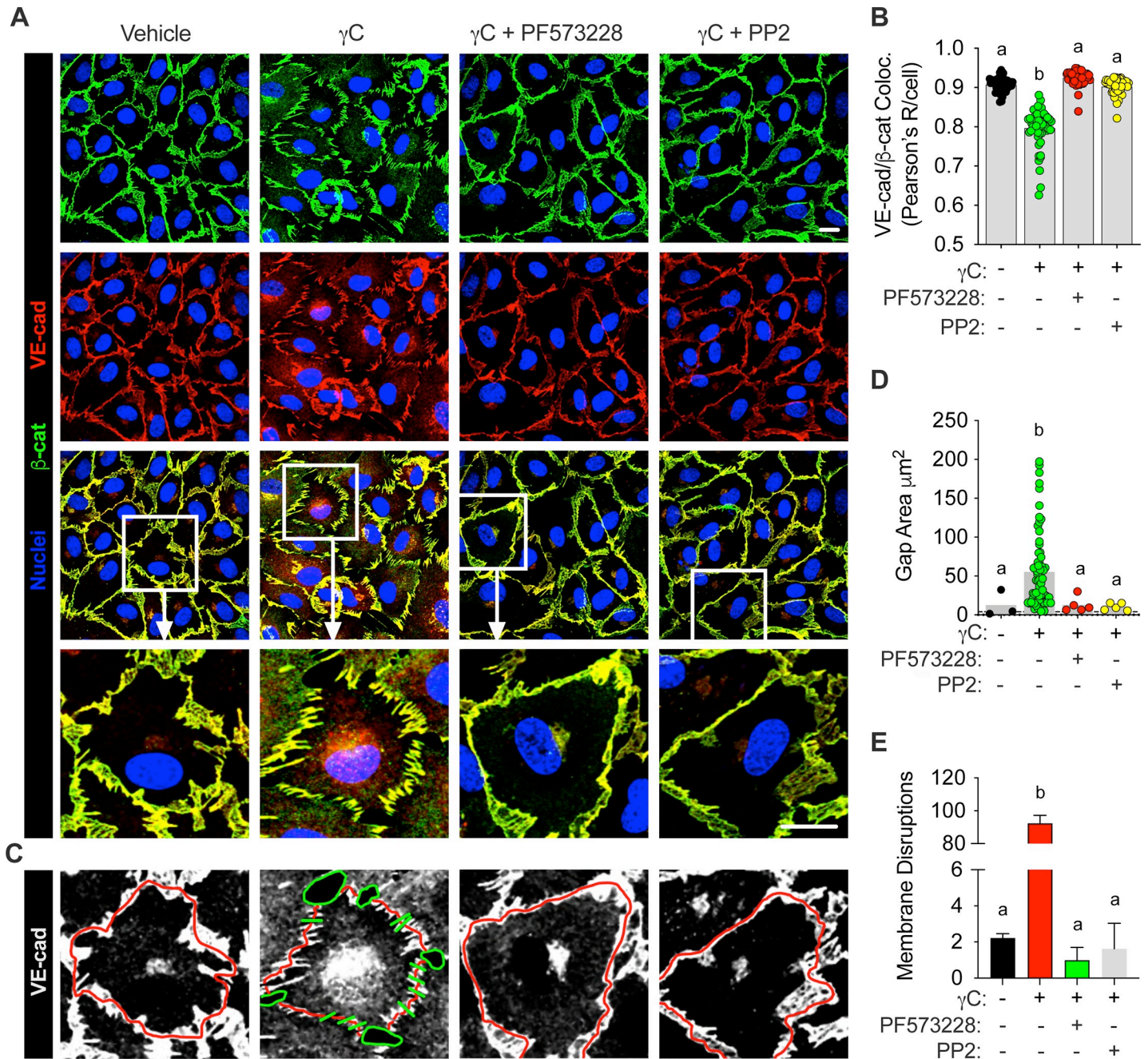


Fig 6. FAK and Src inhibition reduces γ C-induced junctional protein disorganization. RLMVECs were grown to confluence on glass bottom microwells and pre-treated with vehicle control, FAK (PF573228, 1 μ M), or Src inhibitor (PP2, 10 μ M), followed by γ C (10 μ g/mL) treatment for 10 minutes prior to immunofluorescence staining for VE-Cadherin and β -Catenin, and imaging with confocal microscopy. A) Representative confocal micrographs of RLMVECs stained for VE-cad and β -cat indicated γ C-induced AJ rearrangement and dissociation, which were reversed with FAK and/or Src inhibition. B) Colocalization analysis was used as an indicator of VE-cad and β -cat coupling at cell-cell borders and Pearson's correlation (R) coefficients were quantified per cell across three independent experiments. Results are presented as scatter dot plots with bars, where individual dots represent Pearson's R/cell and bars indicate the mean across experiments. C-E) Using maximum projections for VE-cad on the same images the total surface area of gap formations (D) and the number of discontinuous labeling at cell-cell borders (E) were quantified. C) The representative grey scale images of VE-cad are shown to demonstrate how pixel-to-pixel tracings of positive VE-cad (red lines) were done, and at areas where the tracing was negative for VE-cad a perpendicular green line was used to indicate a 'disruption'. The representative gaps are shown by continuous green lines encircling the borders of a gap area. The scatter dot plots and bars indicate the number of cells measured in micrographs over 3 independent experiments. Bars graphs represent the mean \pm s.e.m. (n = 3). Groups with the same letter are not significant from each other (p > 0.05).

<https://doi.org/10.1371/journal.pone.0231739.g006>

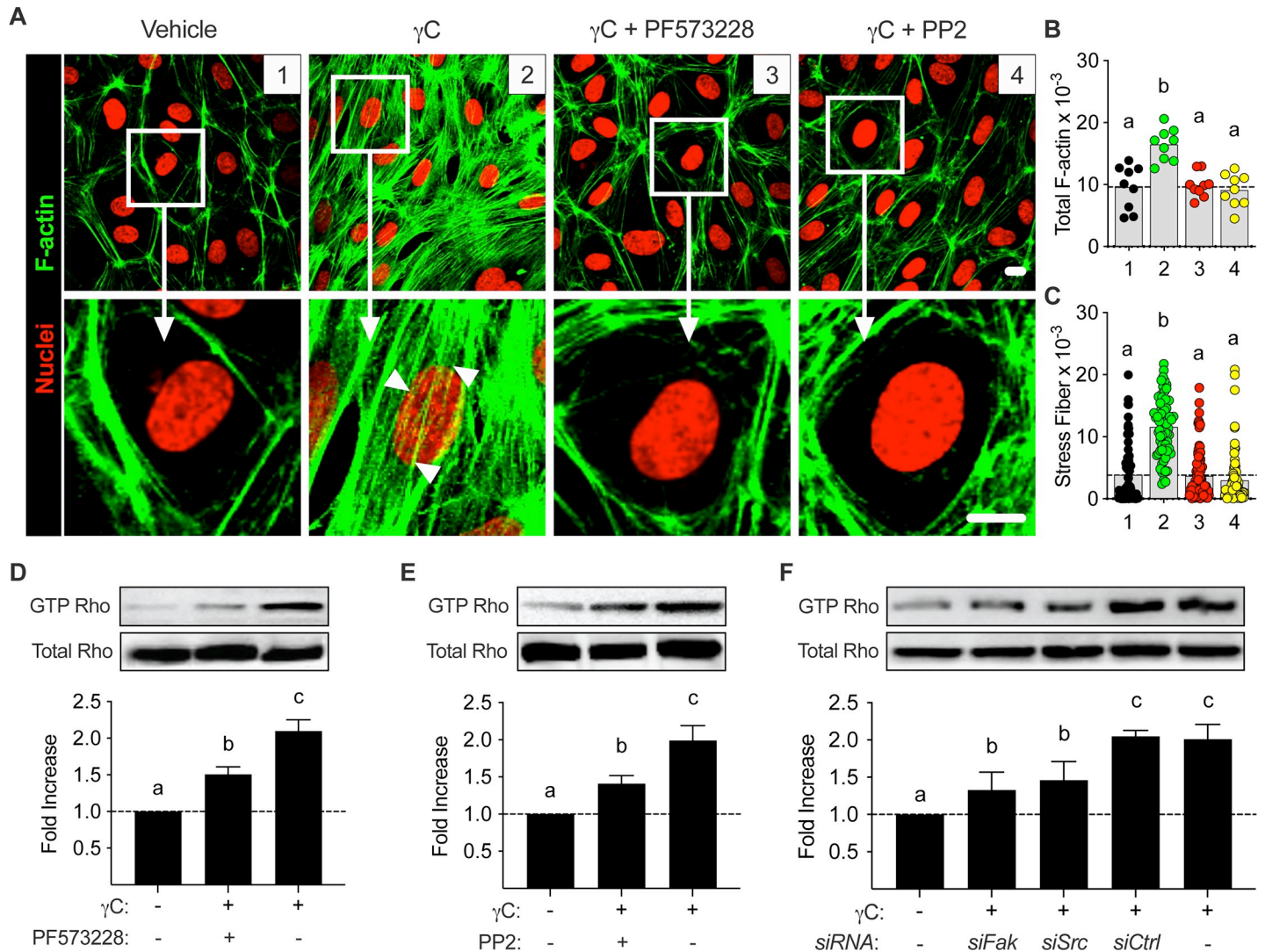


Fig 7. FAK and Src inhibition reduces γ C-induced RhoA activity and stress fiber formation. RLMVECs were grown to confluence on glass bottom microwells and pre-treated with vehicle control, FAK (PF573228, 1 μ M), or Src inhibitor (PP2, 10 μ M), followed by γ C (10 μ g/mL) treatment for 10 minutes prior to F-actin labeling with AF 647-conjugated phalloidin. Representative images obtained using confocal microscopy (A). Arrows show heavy areas of γ C-induced stress fiber formation and reduction of stress fibers by FAK and Src inhibition. B,C) Quantification of total F-actin intensity per micrograph (B) and stress fiber formation per cell (C). Data displayed as scatter dot plots with bars indicating the mean. RLMVECs were grown to confluence and pre-treated with (D) FAK inhibitor (PF573228, 1 μ M), or (E) Src inhibitor (PP2, 10 μ M) prior to γ C (10 μ g/mL) treatment for 10 minutes. Cells were lysed and analyzed for active RhoA (GTP Rho) (n = 4). F) RLMVECs were grown to 70% confluency, transfected with control, FAK, or Src siRNA, and then treated 48 hours post-transfection with γ C (10 μ g/mL) or vehicle control for 10 minutes followed by pull-down assay and immunoblotting for the detection of active RhoA (GTP Rho). siRNA knockdown of FAK and Src reduced γ C-induced Rho activation by approximately 50% when compared to control siRNA. Blots and average optical densities are representative of three independent experiments, (n = 3). Groups with the same letter are not significant from each other (p > 0.05).

<https://doi.org/10.1371/journal.pone.0231739.g007>

induces VE-Cadherin phosphorylation [39]. We demonstrate that γ C-induced FAK activity promotes Src phosphorylation at residue Y416. While in support of our findings, it has been reported that FAK is capable of regulating the activation of Src [18, 34, 42], others have shown the activation of FAK by Src [16, 17]. This suggests that the dynamic relationship between FAK and Src may vary based on the stimulus involved and the dynamic state of the endothelium. It is possible that the two tyrosine kinases interact through a feedback mechanism, since different residues require the activation of the other.

Over the past decades, RhoA pathway has been implicated in endothelial hyperpermeability [6, 9, 21, 25], and Rho-GTP pull down assays in our previous study supported γ C promoting barrier dysfunction through RhoA activation and MLC phosphorylation [5]. RhoA is known to play a direct role in cytoskeletal actin remodeling and F-actin polymerization [6, 25, 36, 37] and formation of F-actin fibers can lead to cytoskeletal reorganization and cell contraction causing subsequent gap formation, which allows blood components (fluid and plasma protein) to leak into interstitial tissue [37]. Activated-neutrophils have been shown to increase endothelial permeability through RhoA pathway activation, stress fiber formation, and intercellular gap formation [24, 25]. Our results indicate that γ C elicits similar gap formation through F-actin reorganization and activation of the RhoA pathway. Evidence suggests a crosstalk between FAK/Src signaling and RhoA during paracellular permeability [21, 38, 51]. Src phosphorylation is necessary for functional formation of integrin-dependent focal adhesion attachment to actin stress fibers in fibroblasts [52], and FAK induces RhoA phosphorylation leading to gap formation and endothelial barrier dysfunction [51, 53]. We show that either FAK or Src inhibition can independently reduce F-actin stress fiber formation and significantly attenuate Rho GTP activity induced by γ C.

In summary, we have shown that FAK and Src are implicated in the hyperpermeability response to γ C. Inhibition of both FAK and Src attenuates γ C-mediated Rho activation, AJ dissociation, F-actin polymerization, and subsequent endothelial barrier dysfunction and microvascular hyperpermeability, where FAK is an upstream regulator of Src. Our data provide experimental evidence supporting the roles of FAK and Src in mediating microvascular hyperpermeability elicited by γ C.

Supporting information

S1 Table. Cells and reagents.
(DOCX)

Acknowledgments

The γ C constructs were generously provided by Dr. [Yoshikazu Takada](#) at the University of California Davis.

Author Contributions

Conceptualization: Mack H. Wu.

Formal analysis: Xiaohua Guo, Rebecca A. Eitnier, Richard S. Beard, Jr.

Funding acquisition: Mack H. Wu.

Investigation: Xiaohua Guo, Rebecca A. Eitnier, Richard S. Beard, Jr., Alexandra M. Aponte, Fang Wang.

Methodology: Xiaohua Guo, Richard S. Beard, Jr., Mack H. Wu.

Supervision: Mack H. Wu.

Validation: Richard S. Beard, Jr.

Visualization: Xiaohua Guo, Rebecca A. Eitnier, Richard S. Beard, Jr., Jamie E. Meegan, Xiaoyuan Yang.

Writing – original draft: Xiaohua Guo, Rebecca A. Eitnier, Richard S. Beard, Jr.

Writing – review & editing: Rebecca A. Eitnier, Richard S. Beard, Jr., Xiaoyuan Yang, Peter R. Nelson, Mack H. Wu.

References

1. Chapin JC, Hajjar KA. Fibrinolysis and the control of blood coagulation. *Blood reviews*. 2015; 29(1):17–24. <https://doi.org/10.1016/j.blre.2014.09.003> PMID: 25294122
2. Kontny F, Dempfle Ce Fau—Abildgaard U, Abildgaard U. Fibrin monomer antigen: a novel marker of mortality in acute myocardial infarction. *European Heart Journal*. 1999; 20(0195-668X (Print)):808–12. <https://doi.org/10.1053/euhj.1998.1454> PMID: 10329078
3. Alvarez-Perez FJ, Castelo-Branco M, Alvarez-Sabin J. Usefulness of measurement of fibrinogen, D-dimer, D-dimer/fibrinogen ratio, C reactive protein and erythrocyte sedimentation rate to assess the pathophysiology and mechanism of ischaemic stroke. *Journal of Neurology, Neurosurgery & Psychiatry*. 2011; 82(9):986.
4. Zacharowski K, Zacharowski P, Reingruber S, Petzelbauer P. Fibrin(ogen) and its fragments in the pathophysiology and treatment of myocardial infarction. *Journal of Molecular Medicine*. 2006; 84(6):469–77. <https://doi.org/10.1007/s00109-006-0051-7> PMID: 16733765
5. Guo M, Daines D, Tang J, Shen Q, Perrin RM, Takada Y, et al. Fibrinogen-gamma C-terminal fragments induce endothelial barrier dysfunction and microvascular leak via integrin-mediated and RhoA-dependent mechanism. *Arterioscler Thromb Vasc Biol*. 2009; 29(3):394–400. <https://doi.org/10.1161/ATVBAHA.108.180950> PMID: 19122172
6. Yuan SY, Rigor RR. Regulation of Endothelial Barrier Function. *Integrated Systems Physiology: From Molecule to Function to Disease*. San Rafael (CA)2010.
7. Mehta D, Malik AB. Signaling Mechanisms Regulating Endothelial Permeability. *Physiological Reviews*. 2006; 86(1):279–367. <https://doi.org/10.1152/physrev.00012.2005> PMID: 16371600
8. Chen XL, Nam J-O, Jean C, Lawson C, Walsh CT, Goka E, et al. VEGF-induced vascular permeability is mediated by FAK. *Developmental Cell*. 2012; 22(1):146–57. <https://doi.org/10.1016/j.devcel.2011.11.002> PMID: 22264731
9. Kumar P, Shen Q, Pivetti CD, Lee ES, Wu MH, Yuan SY. Molecular mechanisms of endothelial hyperpermeability: implications in inflammation. *Expert reviews in molecular medicine*. 2009; 11:e19–e. <https://doi.org/10.1017/S1462399409001112> PMID: 19563700
10. Wu MH. Endothelial focal adhesions and barrier function. *The Journal of Physiology*. 2005; 569(Pt 2):359–66. <https://doi.org/10.1113/jphysiol.2005.096537> PMID: 16195317
11. Yuan SY. Protein kinase signaling in the modulation of microvascular permeability. *Vascular Pharmacology*. 2002; 39(4):213–23.
12. Schaller MD. Biochemical signals and biological responses elicited by the focal adhesion kinase. *Biochimica et Biophysica Acta (BBA)—Molecular Cell Research*. 2001; 1540(1):1–21.
13. Guo M, Wu Mack H, Granger Harris J, Yuan Sarah Y. Focal Adhesion Kinase in Neutrophil-Induced Microvascular Hyperpermeability. *Microcirculation*. 2005; 12(2):223–32. <https://doi.org/10.1080/10739680590905251> PMID: 15824042
14. Wu MH, Guo M, Yuan SY, Granger HJ. Focal adhesion kinase mediates porcine venular hyperpermeability elicited by vascular endothelial growth factor. *The Journal of Physiology*. 2003; 552(Pt 3):691–9. <https://doi.org/10.1113/jphysiol.2003.048405> PMID: 12949227
15. Alexopoulou AN, Lees DM, Bodrug N, Lechertier T, Fernandez I, D'Amico G, et al. Focal Adhesion Kinase (FAK) tyrosine 397E mutation restores the vascular leakage defect in endothelium-specific FAK-kinase dead mice. *The Journal of Pathology*. 2017; 242(3):358–70. <https://doi.org/10.1002/path.4911> PMID: 28444899
16. Zhang W, Xu Q, Wu J, Zhou X, Weng J, Xu J, et al. Role of Src in Vascular Hyperpermeability Induced by Advanced Glycation End Products. *Scientific Reports*. 2015; 5:14090. <https://doi.org/10.1038/srep14090> PMID: 26381822
17. Mitra SK, Schlaepfer DD. Integrin-regulated FAK-Src signaling in normal and cancer cells. *Curr Opin Cell Biol*. 2006; 18(5):516–23. <https://doi.org/10.1016/j.ceb.2006.08.011> PMID: 16919435
18. Schaller MD, Hildebrand JD, Shannon JD, Fox JW, Vines RR, Parsons JT. Autophosphorylation of the focal adhesion kinase, pp125FAK, directs SH2-dependent binding of pp60src. *Mol Cell Biol*. 1994; 14(3):1680–8. <https://doi.org/10.1128/mcb.14.3.1680> PMID: 7509446
19. Angelini DJ, Hyun S-W, Grigoryev DN, Garg P, Gong P, Singh IS, et al. TNF- α increases tyrosine phosphorylation of vascular endothelial cadherin and opens the paracellular pathway through fyn activation in human lung endothelia. *American Journal of Physiology-Lung Cellular and Molecular Physiology*. 2006; 291(6):L1232–L45. <https://doi.org/10.1152/ajplung.00109.2006> PMID: 16891393

20. Tinsley JH, Ustinova EE, Xu W, Yuan SY. Src-dependent, neutrophil-mediated vascular hyperpermeability and β -catenin modification. *American Journal of Physiology-Cell Physiology*. 2002; 283(6): C1745–C51. <https://doi.org/10.1152/ajpcell.00230.2002> PMID: 12388068
21. Holinstat M, Knezevic N, Broman M, Samarel AM, Malik AB, Mehta D. Suppression of RhoA Activity by Focal Adhesion Kinase-induced Activation of p190RhoGAP: ROLE IN REGULATION OF ENDOTHELIAL PERMEABILITY. *Journal of Biological Chemistry*. 2006; 281(4):2296–305. <https://doi.org/10.1074/jbc.M511248200> PMID: 16308318
22. Spassov DS, Wong CH, Sergina N, Ahuja D, Fried M, Sheppard D, et al. Phosphorylation of Trask by Src Kinases Inhibits Integrin Clustering and Functions in Exclusion with Focal Adhesion Signaling. *Molecular and Cellular Biology*. 2011; 31(4):766–82. <https://doi.org/10.1128/MCB.00841-10> PMID: 21189288
23. Tojkander S, Gateva G, Lappalainen P. Actin stress fibers—assembly, dynamics and biological roles. *Journal of Cell Science*. 2012; 125(8):1855.
24. Yuan SY, Wu MH, Ustinova EE, Guo M, Tinsley JH, de Lanerolle P, et al. Myosin Light Chain Phosphorylation in Neutrophil-Stimulated Coronary Microvascular Leakage. *Circulation Research*. 2002; 90(11):1214. <https://doi.org/10.1161/01.res.0000020402.73609.f1> PMID: 12065325
25. Breslin JW, Yuan SY. Involvement of RhoA and Rho kinase in neutrophil-stimulated endothelial hyperpermeability. *American Journal of Physiology-Heart and Circulatory Physiology*. 2003; 286(3):H1057–H62. <https://doi.org/10.1152/ajpheart.00841.2003> PMID: 14630629
26. Hu G, Place AT, Minshall RD. Regulation of endothelial permeability by Src kinase signaling: vascular leakage versus transcellular transport of drugs and macromolecules. *Chem Biol Interact*. 2008; 171(2):177–89. <https://doi.org/10.1016/j.cbi.2007.08.006> PMID: 17897637
27. Sun Y, Hu G, Zhang X, Minshall RD. Phosphorylation of caveolin-1 regulates oxidant-induced pulmonary vascular permeability via paracellular and transcellular pathways. *Circ Res*. 2009; 105(7):676–85, 15 p following 85. <https://doi.org/10.1161/CIRCRESAHA.109.201673> PMID: 19713536
28. Huang Q, Xu W, Ustinova E, Wu M, Childs E, Hunter F, et al. Myosin light chain kinase-dependent microvascular hyperpermeability in thermal injury. *Shock*. 2003; 20(4):363–8. <https://doi.org/10.1097/01.shk.0000079425.0000.db> PMID: 14501951
29. Gao X, Kouklis P, Xu N, Minshall RD, Sandoval R, Vogel SM, et al. Reversibility of increased microvessel permeability in response to VE-cadherin disassembly. *Am J Physiol Lung Cell Mol Physiol*. 2000; 279(6):L1218–25. <https://doi.org/10.1152/ajplung.2000.279.6.L1218> PMID: 11076812
30. Beard RS Jr, Yang X, Meegan JE, Overstreet JE, Yang CG, Elliot JA, et al. Palmitoyl acyltransferase DHHC21 mediates endothelial dysfunction in systematic inflammatory response syndrome. *Nature Communications*. 2016; 7:12823. <https://doi.org/10.1038/ncomms12823> PMID: 27653213
31. Guo M, Breslin JW, Wu MH, Gottardi CJ, Yuan SY. VE-cadherin and β -catenin binding dynamics during histamine-induced endothelial hyperpermeability. *American journal of physiology Cell physiology*. 2008; 294(4):C977–C84. <https://doi.org/10.1152/ajpcell.90607.2007> PMID: 18287330
32. Beard RS Jr, Hoettels BA, Meegan JE, Wertz TS, Cha BJ, Yang X, et al. AKT2 maintains brain endothelial claudin-5 expression and selective activation of IR/AKT2/FOXO1-signaling reverses barrier dysfunction. *J Cereb Blood Flow Metab*. 2018.
33. Nam JS, Ino Y, Sakamoto M, Hirohashi S. Src family kinase inhibitor PP2 restores the E-cadherin/catenin cell adhesion system in human cancer cells and reduces cancer metastasis. *Clin Cancer Res*. 2002; 8(7):2430–6. PMID: 12114449
34. Wu J-C, Chen Y-C, Kuo C-T, Wenshin Yu H, Chen Y-Q, Chiou A, et al. Focal adhesion kinase-dependent focal adhesion recruitment of SH2 domains directs SRC into focal adhesions to regulate cell adhesion and migration. *Scientific Reports*. 2015; 5:18476. <https://doi.org/10.1038/srep18476> PMID: 26681405
35. Wang L, Bittman R, Garcia JGN, Dudek SM. JUNCTIONAL COMPLEX AND FOCAL ADHESION REARRANGEMENT MEDIATES PULMONARY ENDOTHELIAL BARRIER ENHANCEMENT BY FTY720 S-PHOSPHONATE. *Microvascular research*. 2015; 99:102–9. <https://doi.org/10.1016/j.mvr.2015.03.007> PMID: 25862132
36. Komarova Y, Malik AB. Regulation of Endothelial Permeability via Paracellular and Transcellular Transport Pathways. *Annual Review of Physiology*. 2010; 72(1):463–93.
37. Szulcek R, Beckers CML, Hodzic J, de Wit J, Chen Z, Grob T, et al. Localized RhoA GTPase activity regulates dynamics of endothelial monolayer integrity. *Cardiovascular Research*. 2013; 99(3):471–82. <https://doi.org/10.1093/cvr/cvt075> PMID: 23536606
38. Arthur WT, Petch LA, Burrigge K. Integrin engagement suppresses RhoA activity via a c-Src-dependent mechanism. *Curr Biol*. 2000; 10(12):719–22. [https://doi.org/10.1016/s0960-9822\(00\)00537-6](https://doi.org/10.1016/s0960-9822(00)00537-6) PMID: 10873807

39. Jean C, Chen XL, Nam JO, Tancioni I, Uryu S, Lawson C, et al. Inhibition of endothelial FAK activity prevents tumor metastasis by enhancing barrier function. *J Cell Biol.* 2014; 204(2):247–63. <https://doi.org/10.1083/jcb.201307067> PMID: 24446483
40. Hagiwara S, Oshima K, Aoki M, Murata M, Ishihara K, Kaneko M, et al. Usefulness of fibrin degradation products and d-dimer levels as biomarkers that reflect the severity of trauma. *J Trauma Acute Care Surg.* 2013; 74(5):1275–8. <https://doi.org/10.1097/TA.0b013e31828cc967> PMID: 23609278
41. Sulzmaier FJ, Jean C, Schlaepfer DD. FAK in cancer: mechanistic findings and clinical applications. *Nat Rev Cancer.* 2014; 14(9):598–610. <https://doi.org/10.1038/nrc3792> PMID: 25098269
42. Thomas JW, Ellis B, Boerner RJ, Knight WB, White GC, Schaller MD. SH2- and SH3-mediated Interactions between Focal Adhesion Kinase and Src. *Journal of Biological Chemistry.* 1998; 273(1):577–83. <https://doi.org/10.1074/jbc.273.1.577> PMID: 9417118
43. Heffler M, Golubovskaya VM, Dunn KMB, Cance W. Focal adhesion kinase autophosphorylation inhibition decreases colon cancer cell growth and enhances the efficacy of chemotherapy. *Cancer Biology & Therapy.* 2013; 14(8):761–72.
44. Arold ST, Ulmer TS, Mulhern TD, Werner JM, Ladbury JE, Campbell ID, et al. The Role of the Src Homology 3-Src Homology 2 Interface in the Regulation of Src Kinases. *Journal of Biological Chemistry.* 2001; 276(20):17199–205. <https://doi.org/10.1074/jbc.M011185200> PMID: 11278857
45. Sun C, Wu MH, Yuan SY. nmMLCK deficiency ameliorates atherosclerosis in ApoE-deficient mice via reduced endothelial barrier dysfunction and monocyte migration. *Circulation.* 2011; 124(1):48–57. <https://doi.org/10.1161/CIRCULATIONAHA.110.988915> PMID: 21670231
46. Thomas SM, Brugge JS. Cellular functions regulated by Src family kinases. *Annu. Rev. Cell Dev. Biol.* 1997; 13:513–609. <https://doi.org/10.1146/annurev.cellbio.13.1.513> PMID: 9442882
47. Yamanashi Y, Mori S, Yoshida M, Kishimoto T, Inoue K, Yamamoto T, et al. Selective expression of a protein-tyrosine kinase, p56lyn, in hematopoietic cells and association with production of human T-cell lymphotropic virus type I. *PNAS.* 1989; Vol. 86:6538–6542. <https://doi.org/10.1073/pnas.86.17.6538> PMID: 2505253
48. Potter MD, Barbero S, Cheresh DA. Tyrosine Phosphorylation of VE-cadherin Prevents Binding of p120- and β -Catenin and Maintains the Cellular Mesenchymal State. *Journal of Biological Chemistry.* 2005; 280(36):31906–12. <https://doi.org/10.1074/jbc.M505568200> PMID: 16027153
49. Hatanaka K, Simons M, Murakami M. Phosphorylation of VE-cadherin controls endothelial phenotypes via p120-catenin coupling and Rac1 activation. *American Journal of Physiology—Heart and Circulatory Physiology.* 2010; 300(1):H162–H72. <https://doi.org/10.1152/ajpheart.00650.2010> PMID: 21037229
50. Alghisi GC, Ponsonnet L, Rüegg C. The Integrin Antagonist Cilengitide Activates α V β 3, Disrupts VE-Cadherin Localization at Cell Junctions and Enhances Permeability in Endothelial Cells. *PLoS ONE.* 2009; 4(2):e4449. <https://doi.org/10.1371/journal.pone.0004449> PMID: 19212436
51. Grinnell KL, Harrington EO. Interplay between FAK, PKC δ , and p190RhoGAP in the Regulation of Endothelial Barrier Function. *Microvascular research.* 2012; 83(1):12–21. <https://doi.org/10.1016/j.mvr.2011.04.005> PMID: 21549132
52. Miyamoto S, Teramoto H, Coso OA, Gutkind JS, Burbelo PD, Akiyama SK, et al. Integrin function: molecular hierarchies of cytoskeletal and signaling molecules. *The Journal of Cell Biology.* 1995; 131(3):791–805. <https://doi.org/10.1083/jcb.131.3.791> PMID: 7593197
53. Roa-Espitia AL, Hernández-Rendón ER, Baltiérrez-Hoyos R, Muñoz-Gotera RJ, Cote-Vélez A, Jiménez I, et al. Focal adhesion kinase is required for actin polymerization and remodeling of the cytoskeleton during sperm capacitation. *Biology Open.* 2016; 5(9):1189–99. <https://doi.org/10.1242/bio.017558> PMID: 27402964