


ORIGINAL ARTICLE

P-wave indices as predictors of atrial fibrillation

Maria Uggen Rasmussen MD¹  | Preman Kumarathurai MD, PhD¹ |
 Andreas Fabricius-Bjerre MD¹ | Bjørn Strøier Larsen MD¹ | Helena Domínguez MD, PhD¹ |
 Ulla Davidsen MD¹ | Thomas Alexander Gerds PhD² | Jørgen K. Kanters MD³ |
 Ahmad Sajadieh MD, DMSc¹

¹Department of Cardiology, Copenhagen University Hospital of Bispebjerg, Copenhagen, Denmark

²Department of Biostatistics, University of Copenhagen, Copenhagen, Denmark

³Laboratory of Experimental Cardiology, Department of Biomedical Sciences, University of Copenhagen, Copenhagen, Denmark

Correspondence

Maria Uggen Rasmussen, MD, Department of Cardiology, Copenhagen University Hospital of Bispebjerg, Bispebjerg Bakke 23, Copenhagen 2400, Denmark.
 Email: mariaurasmussen@gmail.com

Funding information

This work was supported by several grants from The Danish Heart Foundation (Hjerteforeningen), Copenhagen, Denmark [97-2-F-22516, 97-2-F-22517, 98-2-F-2263, 98-2-F-22624, 98-1-F-22565, 98-1-F-22566].

Abstract

Background: P-wave duration (P_{DURATION}) and P-wave area (P_{AREA}) have been linked to risk of atrial fibrillation (AF), but they do not improve the efficacy of Framingham AF risk score. We suggest the incorporation of both variables in one index, the P-wave area/P-wave duration ($P_{\text{AREA/DURATION}}$) index, which may be considered an expression of the average amplitude of the P wave that reflects aspects of P-wave morphology.

Objective: To assess the prognostic value of P-wave area/P-wave duration index ($P_{\text{AREA/DURATION}}$ index) in lead II together with other P-wave indices (PWIs) in incidence of AF in the Copenhagen Holter Study.

Methods: The study included 632 men and women, between 55 and 75 years with no apparent heart disease or AF. Baseline standard 12-lead Electrocardiography (ECGs) were analyzed manually.

Results: The median follow-up time was 14.7 (14.5;14.9) years. A total of 68 cases of AF and 233 cases of death were recorded. The restricted cubic spline method showed a U-shaped association between $P_{\text{AREA/DURATION}}$ and rate of AF. The lowest quintile of $P_{\text{AREA/DURATION}}$ index in lead II was associated with increased rate of AF, HR 2.80 (1.64–4.79). The addition of the new index to the Framingham model for AF improved the model in this population. The P_{AREA} in lead II in its lowest quintile was also associated with increased rate of AF, HR 2.16 (1.25–3.75), but did not improve the Framingham model. P_{DURATION} and P-wave terminal force (PTF) were not significantly associated with AF.

Conclusion: A flat P wave as expressed by a small $P_{\text{AREA/DURATION}}$ index in lead II is associated with increased rate of incident AF beyond known AF risk factors.

KEYWORDS

atrial fibrillation, electrocardiography, P wave, P-wave indices

This is an open access article under the terms of the Creative Commons Attribution License, which permits use, distribution and reproduction in any medium, provided the original work is properly cited.

© 2020 The Authors. *Annals of Noninvasive Electrocardiology* published by Wiley Periodicals, Inc.

1 | INTRODUCTION

Atrial fibrillation (AF) is the most common arrhythmia of clinical significance (Kirchhof et al., 2016). AF is known to increase cardiovascular and all-cause mortality as well as risk of complications such as ischemic stroke, heart failure, and dementia (Kirchhof et al., 2016). Identifying patients at risk of developing AF is important in preventing AF-related complications, such as stroke. The electrocardiogram may be a valuable tool in identifying these patients, as it is a cheap, noninvasive, and readily available method for evaluating electrophysiological function.

The P wave is a measure of atrial electrical activity. Previous studies have stipulated that P-wave indices (PWI) may be useful in determining which patients are at risk of developing AF (Aizawa, 2017; German, Kabir, Dewland, Henrikson, & Tereshchenko, 2016; Magnani et al., 2015). Such measures include P-wave duration (P_{DURATION}), P-wave area (P_{AREA}), and P-wave terminal force (PTF). PWIs are hypothesized to be surrogate measures of atrial electrical function and reflect sub-clinical atrial remodeling (Magnani, 2015). P_{DURATION} is generally accepted as a marker of atrial conduction time (Conte et al., 2017) and both increased P_{DURATION} and PTF are thought to be markers of left atrial enlargement (Shenasa, Josephson, & Mark Estes, 2015). P_{AREA} has been suggested as a marker of abnormal atrial structure (German et al., 2016). However, studies have shown varying results and a single, reliable marker for AF has not been identified.

Abnormal P_{AREA} and P_{DURATION} may be considered to reflect different aspects of atrial structural and electrophysiological abnormalities (Conte et al., 2017; German et al., 2016; Shenasa et al., 2015). We suggest the P-wave area/P-wave duration index ($P_{\text{AREA/DURATION}}$ index), as a new P-wave index. This index can be considered a calculated expression of the average p-wave amplitude, since it is the ratio between the area and the duration of the P wave. Integrating both P_{AREA} and P_{DURATION} in one single index that may reflect different electrophysiological abnormalities may provide a better measure of left atrial abnormalities and a better marker of AF. Furthermore, $P_{\text{AREA/DURATION}}$ reflects some aspects of the P-wave shape, where a small $P_{\text{AREA/DURATION}}$ index may be considered a marker for a flat P wave and a large $P_{\text{AREA/DURATION}}$ index as a marker of a peaked, short P wave (Figure 1). Recognizing these key morphological features makes it easier for clinicians to catch P-wave abnormalities.

The objective of the study was to evaluate the association of $P_{\text{AREA/DURATION}}$ index together with other PWI, including PTF, P_{AREA} , P_{DURATION} , and incident AF in patients with no apparent heart disease at baseline. Furthermore, the study aimed to investigate the effect of adding PWI to the Framingham AF risk score (Schnabel et al., 2009).

2 | METHODS

2.1 | Copenhagen Holter Study

The Copenhagen Holter Study included middle-aged and elderly subjects, with no apparent history of AF, stroke, or cardiovascular disease, enrolled between April 1998 and June 2000. Follow-up

was completed in 2014, with a median of approximately 14 years of follow-up. The aim of the follow-up study was to examine the value of 48-hr Holter recording in assessing future adverse events including AF, ischemic stroke, and mortality in middle-aged and older men and women. Information about the study protocol and the selection process has been published previously (Kumarathurai et al., 2017; Larsen, Kumarathurai, Falkenberg, Nielsen, & Sajadieh, 2015).

In short, all men of 55 years and all men and women of 60, 65, 70, and 75 years of age ($n = 2,969$) living within 2 defined postal regions in the city of Copenhagen were contacted with a questionnaire regarding cardiovascular risk factors, medication use, and medical history. Subjects were subsequently ranked according to several self-reported risk factors including hypertension, diabetes mellitus, smoking habits, familial predisposition to sudden death or acute myocardial infarction, obesity (body mass index (BMI) $> 30 \text{ kg/m}^2$), or known hypercholesterolemia. All responding individuals with >1 risk factor, and 60% of subjects with 0–1 risk factors, selected at random, were invited to a follow-up consisting of a physician-based questionnaire, physical examination, laboratory testing, electrocardiography (ECG), and 48-hr continuous ECG recording. Subjects with current or past AF, manifest ischemic heart disease, congestive heart failure, valvular heart disease, congenital heart disease, angina pectoris, stroke, cancer, or other life-threatening conditions were excluded. This resulted in 678 participants who underwent fasting laboratory tests, a physical examination with anthropometric measurements, baseline ECG and up to 48 hr of continuous Holter monitoring. For the purpose of this study, out of the 678 participants, 648 had an ECG that was eligible for analysis. Of these, 16 participants were excluded because of missing variables, resulting in 632 subjects included in the analysis.

2.2 | Follow-up and endpoints

Data on death and AF were obtained from national registries. Discharge letters from hospital admissions and patient-files were reviewed where necessary. Diagnosis of incident AF was verified with documentation in the form of ECG, telemetry or both from the patient records.

2.3 | Ethics

The Copenhagen Holter Study was approved by the Regional Ethics Committee of Copenhagen and Frederiksberg. The study complies with the Helsinki Declaration. All participants provided their written informed consent.

2.4 | ECG analysis

Baseline ECGs were analyzed manually, digitally using an image measurement program (ImageJ, Fiji) (Schindelin et al., 2012), divided

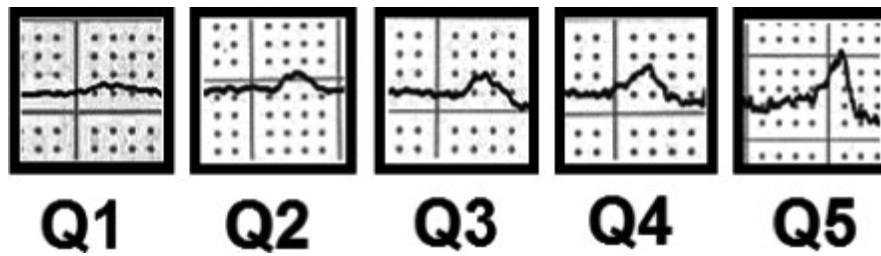


FIGURE 1 Examples of P-wave shape in quintiles of P-wave area/P-wave duration index in lead II. The figure shows examples of P-wave shape taken from the included electrocardiography s in this study, divided into 5 quintiles. The index is a representation of the average amplitude of the P wave. A small index (Q1) arises when the ratio between area and duration is skewed and the denominator is larger relative to the numerator, meaning a longer P-wave duration and a smaller P-wave area, hence, a flat, prolonged P wave. A large index (Q5) is a representation of a ratio with a small denominator and a large numerator, being a short, peaked P wave. The 3 middle quintiles represent normal P waves where the ratio between P-wave area and P-wave duration is not skewed

between two raters and blinded for patient outcomes. The raters measured PTF in precordial lead V_1 and $P_{DURATION}$ and P_{AREA} in lead II. A predefined manual was used to ensure a standardized method of measuring by both raters.

P-wave terminal force was defined as the duration multiplied by the amplitude of the negative part of the P wave ($P'_{DURATION} \cdot P'_{AMPLITUDE}$), measured in μV ms in lead V_1 . For the analysis, the remaining PWIs

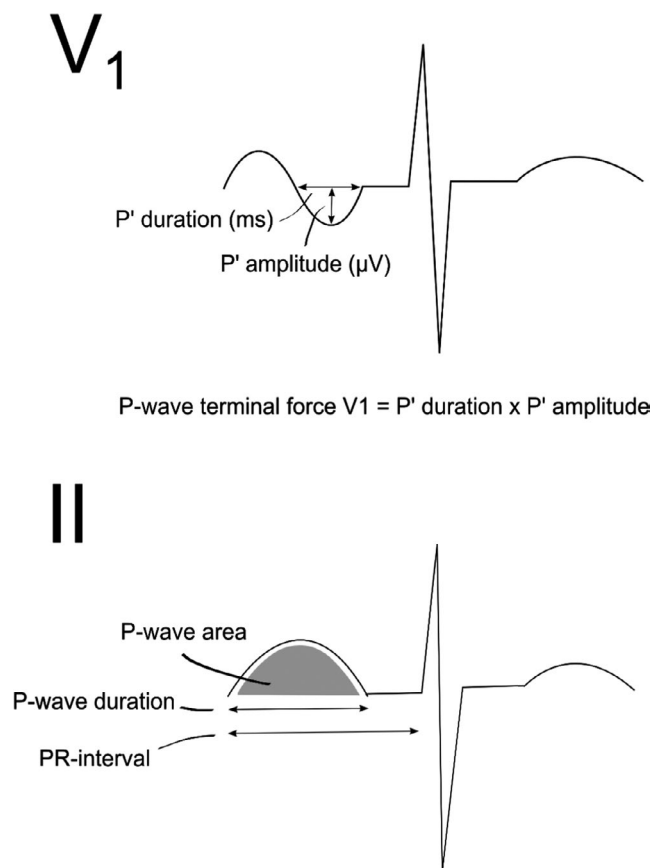


FIGURE 2 P-wave measurements in lead V_1 and II. P-wave indices were measured digitally, manually in leads V_1 and II. P-wave terminal force was measured in lead V_1 as the duration multiplied by the amplitude of the negative part of the P wave (μV ms). P-wave area (μV ms), P-wave duration (ms), and PR-interval (ms) were measured in lead II

were taken from measurements in lead II, as this lead provides a good view of the P wave (Meek & Morris, 2002). All P waves in lead II were positive. $P_{DURATION}$ was measured from the on-set of the P-wave deflection to its return to the isoelectric line, measured in milliseconds. P_{AREA} was measured as the area under the curve of the positive deflection of the P wave (Figure 2). $P_{AREA/DURATION}$ index was calculated as the ratio of P_{AREA} and $P_{DURATION}$.

The inter-rater variability was assessed by 2 raters using 20 randomly selected ECGs. One rater was used to assess intrarater variability, measuring the same 20 ECGs twice. In addition, inter-rater variability was compared with automated measures.

2.5 | Statistics

Continuous variables are presented as median and interquartile range (IQR) and compared with Kruskal-Wallis tests. Categorical variables are presented as frequency (percentage) and compared with chi-square tests. Two-tailed tests of significance are reported and the level of statistical significant was set at 5%. The reproducibility was assessed for intra-, inter and manual-automatic variability using interclass correlation coefficient (ICC).

The Kaplan-Meier method was used to calculate the absolute risk of all-cause mortality and the Aalen-Johansen method to calculate the absolute risk of AF. The association between PWI and the AF-hazard rate was analyzed by cause-specific Cox regression. To allow that extremely low and extremely high values of a biomarker both can be associated with increased AF-hazard rate, we categorized the markers $P_{AREA/DURATION}$ index and P_{AREA} according to their 20% and 80% quintiles. Reported were two AF-hazard ratios and all-cause mortality hazard ratios with 95% confidence limits (CI) using the middle 60% of the marker values as reference. All analyses with AF as endpoint were adjusted for Framingham score variables (Schnabel et al., 2009). All-cause mortality was adjusted for age, sex, smoking, diabetes mellitus, and systolic blood pressure. To graphically illustrate the relation between PWI and AF-hazard rate, we also applied restricted cubic splines with three knots (Harrell, 2001). For prediction analysis area under the ROC curve (AUC), we used the categorized P-wave parameters. $P_{DURATION}$ and PTF were categorized by known cut off points

from literature ($P_{\text{DURATION}} > 120$ ms and $\text{PTF} > 4,000$ $\mu\text{V ms}$) (Magnani et al., 2010).

R Core Team (2018) and StataCorp (2013) were used for statistical analysis.

3 | RESULTS

The study included 632 participants with no apparent heart disease at baseline. Table 1 shows the baseline characteristics for the overall study population and for three groups of the $P_{\text{AREA/DURATION}}$ index in lead II, divided into the lowest quintile, the three middle quintiles joined (20%–80%) and the highest quintile of the index. $P_{\text{AREA/DURATION}}$ index in the lower quintiles was associated with lower heart rate, and with smaller other PWIs in general.

Apart from these differences, the groups were comparable in relation to other known risk factors of AF. Median follow-up time was 14.7 (14.5;14.9) years. During this time, there were 68 cases of incident AF and 233 deaths.

3.1 | Association analyses

AF: $P_{\text{AREA/DURATION}}$ index and P_{AREA} were both associated with increased rate of AF in their lowest quintiles (Table 2). P_{DURATION} and PTF were not associated with rate of AF in these analyses. Adding heart rate to the cox regression models did not alter the results. Restricted cubic spline analyses showed a U-shaped association between $P_{\text{AREA/DURATION}}$ and risk of AF. However, the highest quintile did not reach statistical significance (Figure 3).

TABLE 1 Baseline characteristics of study participants and comparison of characteristics in groups of lowest quintile, Q20-Q80 and highest quintile of P-wave area/P-wave duration index in lead II

Variable	Level	Lowest quintile (n = 127)	Q20-Q80 (n = 378)	Highest quintile (n = 127)	Total (n = 632)	p-value
Gender	Male	77 (60.6)	220 (58.2)	68 (53.5)	365 (57.8)	.50
Age	55	35 (27.6)	73 (19.3)	20 (15.7)	128 (20.3)	
	60	28 (22.0)	88 (23.3)	30 (23.6)	146 (23.1)	
	65	18 (14.2)	83 (22.0)	33 (26.0)	134 (21.2)	
	70	23 (18.1)	76 (20.1)	24 (18.9)	123 (19.5)	
	75	23 (18.1)	58 (15.3)	20 (15.7)	101 (16.0)	
BMI	Underweight	1 (0.8)	6 (1.6)	5 (3.9)	12 (1.9)	
	Normal	32 (25.2)	125 (33.1)	55 (43.3)	212 (33.5)	
	Overweight	63 (49.6)	177 (46.8)	50 (39.4)	290 (45.9)	
	Obese	31 (24.4)	70 (18.5)	17 (13.4)	118 (18.7)	
Smoker	Yes	62 (48.8)	171 (45.2)	62 (48.8)	295 (46.7)	.68
Systolic Blood pressure, mmHg		155 [30] (120, 220)	150 [30] (100, 235)	160 [40] (100, 250)	155 [30] (100, 250)	.20
Heart rate, beats pr. min		66 [12] (48, 95)	70.5 [15.8] (48, 107)	78 [15.5] (49, 112)	71 [16] (48, 112)	<.0001
Systolic murmur	Grade 0	86 (67.7)	252 (66.7)	84 (66.1)	422 (66.8)	
	Grade 1–2	36 (28.3)	119 (31.5)	40 (31.5)	195 (30.9)	
	Grade 3–4	5 (3.9)	7 (1.9)	3 (2.4)	15 (2.4)	
Diabetes	Present	13 (10.2)	44 (11.6)	13 (10.2)	70 (11.1)	.86
Hypertension treatment	Present	34 (26.8)	105 (27.8)	39 (30.7)	178 (28.2)	.76
Cholesterol		6 [1.3] (2.5, 8.4)	6 [1.4] (3.3, 11.0)	6.1 [1.4] (1.9, 8.4)	6 [1.3] (1.9, 11.0)	.52
PR-interval		163.3 [30] (121.7, 226.7)	165 [25] (115, 275)	163.3 [20.8] (123.3, 240.0)	165 [25] (115, 275)	.83
P-wave area, lead II ($\mu\text{V}\cdot\text{ms}$)		4,781 [1688] (1,063, 11,656)	8,438 [2422] (4,094, 14,063)	11,969 [2531] (7,844, 17,313)	8,453 [4143] (1,063, 17,313)	<.001
P-wave duration, lead II (ms)		91 [26] (35, 128)	106 [18] (63, 149)	106 [12] (56, 143)	104 [18] (35, 149)	<.001
P-wave terminal force, lead V_1 ($\mu\text{V}\cdot\text{ms}$)		2,798 [1939] (506, 8,779)	3,918 [2334] (737, 11,559)	5,840 [4064] (670, 18,926)	3,937 [2743] (506, 18,926)	<.001

Note: Values are n (%) or median interquartile range [IQR] (range).

TABLE 2 Association of P-wave indices with adjusted hazard rates for AF and mortality

P-wave indices	AF (HR)	95% CI	p-value	Mortality (HR)	95% CI	p-value
P-wave area/P-wave duration index, lead II (Lowest quintile ^a)	2.80	(1.64,4.79)	<.001	1.17	(0.84,1.63)	.36
P-wave area/P-wave duration index, lead II (highest quintile ^a)	1.25	(0.64,2.46)	.52	1.39	(1.01,1.92)	.04
P-wave area, lead II (Lowest quintile ^a)	2.16	(1.25,3.75)	.006	1.03	(0.73,1.44)	.88
P-wave area, lead II (highest quintile ^a)	1.03	(0.54,1.97)	.93	1.06	(0.76,1.47)	.75
P-wave duration, lead II above 120 ms	1.81	(0.95,3.45)	.07	1.03	(0.68,1.56)	.88
P-wave terminal force V ₁ above 4,000	0.86	(0.52,1.41)	.55	1.03	(0.79,1.34)	.85

Note: Atrial fibrillation (AF) adjusted for Framingham AF risk factors: age, gender, systolic blood pressure, body mass index, PR-interval, and systolic murmur. Mortality adjusted for age, gender, smoking, systolic blood pressure, cholesterol, and diabetes.

^aCompared with quintile 2–4 as references.

Mortality: P_{AREA/DURATION} index in its highest quintile was associated with mortality (Table 2). None of the other PWI were associated with mortality.

3.2 | Discrimination

The addition of P_{AREA/DURATION} index significantly improved AF risk discrimination after 15 years of follow-up. Receiver Operating Characteristic analyses (AUC) for the Framingham score variables, different PWI, and addition of PWI into the Framingham model are shown in Table 3.

3.3 | Absolute risk

Figure 4 shows Aalen-Johansen curves for the events of AF and Figure 5 show Kaplan-Meier survival curves for the events of all-cause mortality for different P_{AREA/DURATION} categories.

3.4 | Inter- and intrarater variability for P-wave measurement

The intraobserver reliability for P_{DURATION}, P_{AREA}, and PTF had ICC values of .96, .99, and .99, respectively. The interobserver reliability for two observers for P_{DURATION}, P_{AREA}, and PTF had ICC values of .94, .96, and .97, respectively. We also investigated the variability between manual and automated ECG analysis, with ICC values for P_{DURATION} and PTF of 0.89 and 0.88, respectively.

4 | DISCUSSION

This was an exploratory study that aimed to assess the prognostic value of the P_{AREA/DURATION} index and other PWI in incidence of AF. The major finding of this study is that a flat P wave (Figure 1) expressed as a small P_{AREA/DURATION} index in lead II, is significantly

associated with long-term incidence of AF after relevant adjustments. Furthermore, it was shown that the P_{AREA/DURATION} index improved the Framingham risk model for AF in this population. An increased P_{AREA/DURATION} index was associated with all-cause mortality.

Many cardiovascular diseases and concomitant conditions increase the risk of developing AF (Kirchhof et al., 2016). Cumulative exposure to risk factor induces a progressive structural remodeling of the atria (Kirchhof et al., 2016). The hallmark of structural atrial remodeling in the progressive process of AF is atrial fibrosis and dilatation (Kirchhof et al., 2016). Fibrosis seems to be an important underlying cause of AF because of conduction heterogeneity, triggered activity, and reentry (Burstein & Nattel, 2008). Histologically, the atrial tissue in patients with AF is shown to be more fibrotic compared to atrial tissue in patients without AF (Burstein & Nattel, 2008). Increased fibrotic tissue, loss of muscle, and dilatation of the atria are correlated to more frequent and less reversible incidents of AF (Burstein et al., 2008). Prolonged total atrial activation time is an indirect marker of atrial fibrosis (Gorenk et al., 2017). Fibrosis is known to decrease conduction (Nguyen, Qu, & Weiss, 2014), thereby giving a smaller and longer signal on the ECG (Michelucci et al., 2002). A small P_{AREA/DURATION} index may, therefore, be considered a possible marker for both atrial dilatation and fibrosis. These changes can prolong LA's activation time and thus be considered as the equivalent of left bundle branch block and poor R-wave progression in the ventricles. These changes may be due to increased pressure or volume load on atrium, for example, due to hypertension or valvular disease or a slow degeneration due to genetic factors or environmental factors.

It is noteworthy that the effect of P_{AREA/DURATION} on the risk of AF could be demonstrated only after several years of follow-up. Thus, a smaller P_{AREA/DURATION} may represent initial atrial changes that after years will lead to AF. Another possibility is that many of these subjects have had undetected paroxysmal AF for years before it was ultimately incident.

The association of P_{AREA/DURATION} in its highest quintile and increased rate of mortality is also notable and may be due to dilatation

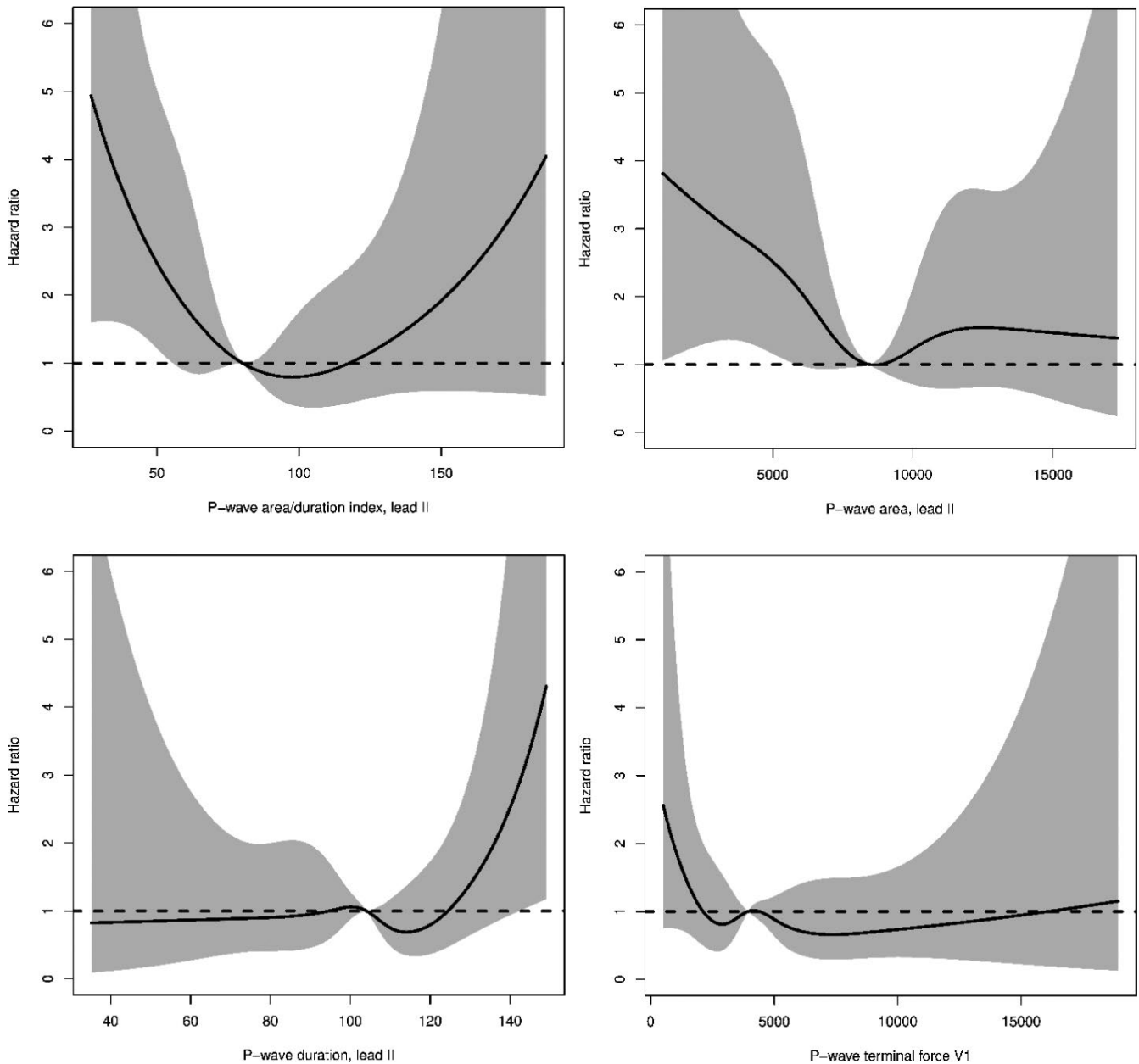


FIGURE 3 Restricted cubic splines of Hazard rate for atrial fibrillation (AF) and P-wave indices. Restricted cubic spline analysis of the P-wave area/P-wave duration index and other PWI in relation to the hazard ratio of AF

and hypertrophy of atrium due to other diseases with increased work load on the atria, such as pulmonary artery hypertension, severe hypertension, or similar.

Our findings are consistent with previous research that has demonstrated a significant association between a small P_{AREA} and rate of AF (Magnani et al., 2015). However, P_{AREA} has not been widely investigated. To our knowledge, only two other studies have examined P_{AREA} in relation to AF risk. The ARIC study showed that both large and small maximum P_{AREA} were significantly associated with AF (Magnani et al., 2015). The Framingham study showed no increased risk associated with maximum P_{AREA} (Magnani et al., 2015). In fact, the Framingham study found no increased AF risk associated with any PWIs. Other studies have shown that prolonged $P_{DURATION}$

is associated with AF (Magnani et al., 2011), and one study has found that shorter $P_{DURATION}$ (Nielsen et al., 2015) is also significantly associated with AF. The associations for P_{AREA} and $P_{DURATION}$ in relation to AF risk can therefore possibly also be considered as U-shaped curves, where both smaller and larger than normal measures are signs of atrial dysfunction and thereby possible predictors of AF. This is also clear from restricted cubic spline curves in this study, showing a U-shaped trend for the $P_{AREA}/DURATION$ index, however, with a broad confidence interval in the high end, possibly due to too few observations.

In contrast to previous studies, however, we found no association between PTF and rate of AF. PTF is particularly sensitive to electrode placement (Rasmussen et al., 2019). Therefore, the

TABLE 3 Difference in area under the ROC curve (AUC) in relation to atrial fibrillation with Framingham score variables alone versus addition of P-wave indices for 5 and 15 years of follow-up

P-wave indices	Years since electrocardiography	AUC (CI)	Delta AUC (CI)	p
Framingham variables alone	5	78.0 [70.2;85.8]		
P-wave area/P-wave duration index, lead II	5	78.6 [70.4;86.9]	0.6 [-8.2;9.4]	.89
P-wave area, lead II	5	78.1 [70.4;85.8]	0.1 [-7.4;7.6]	.98
P-wave duration, lead II	5	77.6 [68.1;87.1]	-0.4 [-3.5;2.7]	.80
P-wave terminal force, lead V ₁	5	77.7 [69.4;86.0]	-0.3 [-2.4;1.8]	.78
Framingham variables alone	15	53.5 [29.1;77.9]		
P-wave area/P-wave duration index, lead II	15	62.0 [33.6;90.3]	8.5 [0.6;16.3]	.034
P-wave area, lead II	15	59.1 [32.3;85.9]	5.6 [-0.6;11.8]	.076
P-wave duration, lead II	15	54.8 [29.7;79.8]	1.3 [-1.7;4.3]	.41
P-wave terminal force, lead V ₁	15	54.4 [29.6;79.2]	0.9 [-0.9;2.8]	.33

Note: Area under the ROC curve for P-wave area/P-wave duration index and other PWI when added to Framingham score variables.

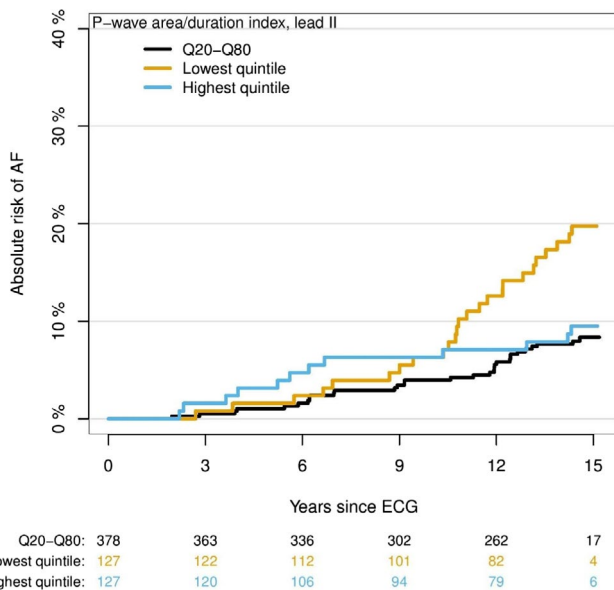


FIGURE 4 Absolute risk of atrial fibrillation (AF) by P-wave area/P-wave duration index in three groups. Absolute risk of AF in years since baseline electrocardiography divided into lowest, highest, and middle quintiles for the P_{AREA/DURATION} index

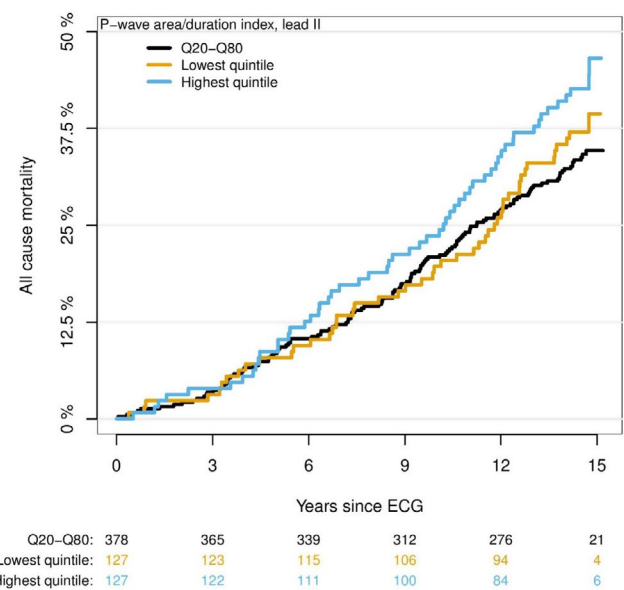


FIGURE 5 Absolute risk of mortality for P-wave area/P-wave duration index. Absolute risk of mortality in years since baseline electrocardiography divided into lowest, highest, and middle quintiles for the P_{AREA/DURATION} index

lack of association in this study may in part be due to the occurrence of high placement of the precordial electrodes in clinical settings (García-Niebla, 2009; McCann, Holdgate, Mahmud, & Waddington, 2007; Medani, Hensey, Caples, & Owens, 2017; Rajaganeshan, Ludlam, Francis, Parasramka, & Sutton, 2008), and

the impact that high placement has on measurements. High placement of V₁-V₂ electrodes increases the negative component of the P wave in V₁ and V₂ (García-Niebla, 2009; Ishikawa & Yanagisawa, 1981). In this study, other PWI has been measured in lead II. We argue that the limb leads are most reliable for measuring PWI. Lead

II is known to be the best lead for evaluating P waves (Meek et al., 2002).

4.1 | Limitations

Our study sample was comprised mostly of Caucasians, so our results may not be transferrable to other ethnic groups. Furthermore, our sample consisted of subjects over 55 years of age, most with at least one cardiovascular risk factor, so our results may not be transferrable to a younger, healthy population. Additionally, there is a possibility that not all cases of AF were recorded, because of the paroxysmal nature of this arrhythmia.

In this study, automated analysis and quantification were not performed; however, we have demonstrated that PWI can be measured manually with high intra and inter-rater reproducibility that correlate well with automated measurements.

4.2 | Clinical perspective

AF prediction using simple, clinically available tools that enable clinicians to identify subjects with increased risk of developing AF would be of high value in pre-emptive strategies of AF-related complications. Our study is consistent with previous studies that suggest PWI could be a potential candidate, and we demonstrated that the new index ($P_{\text{AREA/DURATION}}$) is a strong marker with additive effect on Framingham AF score and an association with all-cause mortality. However, further studies are necessary in order to establish the reliability of this new index as a marker for AF prediction. As $P_{\text{AREA/DURATION}}$ also reflects aspects of P-wave morphology, it makes it easier for clinicians to visualize and capture P-wave abnormalities.

5 | CONCLUSION

A flat P wave as expressed by a small $P_{\text{AREA/DURATION}}$ index in lead II, possibly as an ECG marker of atrial muscle loss and prolongation of conduction time, is associated with increased rate of incident AF beyond known AF risk factors.

CONFLICT OF INTEREST

None.


AUTHORS' CONTRIBUTION

A.S. and M.U.R. conceived the study. M.U.R. and A.F. performed the ECG measurements. J.K. assisted in validating the measurement method. All statistical analysis was done by T.A.G., P.K., A.F., B.L., J.K., H.D., U.D. participated in discussions and contributed to the design and implementation of the research, to the analysis of the results and to the writing of the manuscript. All authors reviewed and commented on the manuscript.

ETHICAL APPROVAL

The Copenhagen Holter Study was approved by the Regional Ethics Committee of Copenhagen and Frederiksberg. The study complies with the Helsinki Declaration. All participants provided their written informed consent.

ORCID

Maria Uggen Rasmussen  <https://orcid.org/0000-0002-9081-5195>

REFERENCES

- Aizawa, Y. (2017). Electrocardiogram (ECG) for the prediction of incident atrial fibrillation: An overview. *Journal of Atrial Fibrillation*, 10(4), 1–10.
- Burstein, B., & Nattel, S. (2008). Atrial fibrosis: Mechanisms and clinical relevance in atrial fibrillation. *Journal of the American College of Cardiology*, 51(8), 802–809. <https://doi.org/10.1016/j.jacc.2007.09.064>
- Conte, G., Luca, A., Yazdani, S., Caputo, M. L., Egoli, F., & Moccetti, T., Kappenberger, L. ... Auricchio, A. (2017). Usefulness of P-wave duration and morphologic variability to identify patients prone to paroxysmal atrial fibrillation. *American Journal of Cardiology*, 119(2):275–279. <https://doi.org/10.1016/j.amjcard.2016.09.043>
- García-Niebla, J. (2009). Comparison of P-wave patterns derived from correct and incorrect placement of V1–V2 electrodes. *Journal of Cardiovascular Nursing*, 24(2), 156–161.
- German, D. M., Kabir, M. M., Dewland, T. A., Henrikson, C. A., & Tereshchenko, L. G. (2016). Atrial fibrillation predictors: Importance of the electrocardiogram. *Annals of Noninvasive Electrocardiology*, 21(1), 20–29.
- Gorenec, B., Bax, J., Boriani, G., Chen, S. A., Dagres, N., & Glotzer, T. V., ... Botto, G. L. (2017). Device-detected subclinical atrial tachyarrhythmias: Definition, implications and management—An European Heart Rhythm Association (EHRA) consensus document, endorsed by Heart Rhythm Society (HRS), Asia Pacific Heart Rhythm Society (APHRS) and Sociedad Lat. EP Eur. *Europace*, 19(9), 1556–1578.
- Harrell, F. (2001). *Regression modeling strategies*. New York, NY: Springer-Verlag.
- Ishikawa, K., & Yanagisawa, A. (1981). Influence of an upward shift in the V1 electrode position on the P-terminal force. *Angiology*, 32(7), 485–488.
- Kirchhof, P., Benussi, S., Kotecha, D., Ahlsson, A., Atar, D., Casadei, B., ... Vardas, P. (2016). 2016 ESC Guidelines for the management of atrial fibrillation developed in collaboration with EACTS. *Europace*, 18(11), 1609–1678. <https://doi.org/10.5603/KP.2016.0172>
- Kumarathurai, P., Mouridsen, M. R., Mattsson, N., Larsen, B. S., Nielsen, O. W., Gerds, T. A., & Sajadieh, A. (2017). Atrial ectopy and N-terminal pro-B-type natriuretic peptide as predictors of atrial fibrillation: A population-based cohort study. *Europace*, 19(3), 364–370.
- Larsen, B. S., Kumarathurai, P., Falkenberg, J., Nielsen, O. W., & Sajadieh, A. (2015). Excessive atrial ectopy and short atrial runs increase the risk of stroke beyond incident atrial fibrillation. *Journal of the American College of Cardiology*, 66(3), 232–241.
- Magnani, J. W., Johnson, V. M., Sullivan, L. M., Gorodeski, E. Z., Schnabel, R. B., Lubitz, S. A., ... Benjamin, E. J. (2011). P Wave Duration and Risk of Longitudinal Atrial Fibrillation in Persons ≥ 60 Years Old (from the Framingham Heart Study). *American Journal of Cardiology*, 107(6): 917–921.e1. <https://doi.org/10.1016/j.amjcard.2010.10.075>
- Magnani, J. W., Johnson, V. M., Sullivan, L. M., Lubitz, S. A., Schnabel, R. B., Ellinor, P. T., & Benjamin, E. J. (2010). P-wave indices: Derivation of reference values from the Framingham Heart Study. *Annals of Noninvasive Electrocardiology*, 15(4), 344–352. <https://doi.org/10.1111/j.1542-474X.2010.00390.x>

- Magnani, J. W., Zhu, L., Lopez, F., Pencina, M. J., Agarwal, S. K., Soliman, E. Z., ... Alonso, A. (2015). P-wave indices and atrial fibrillation: Cross-cohort assessments from the Framingham Heart Study (FHS) and Atherosclerosis Risk in Communities (ARIC) study. *American Heart Journal*, *169*(1), 53–61.e1. <https://doi.org/10.1016/j.ahj.2014.10.009>
- McCann, K., Holdgate, A., Mahammad, R., & Waddington, A. (2007). Accuracy of ECG electrode placement by emergency department clinicians. *Emergency Medicine Australasia*, *19*(5), 442–448.
- Medani, S. A., Hensey, M., Caples, N., & Owens, P. (2017). Accuracy in precordial ECG lead placement: Improving performance through a peer-led educational intervention. *Journal of Electrocardiology*, *51*(1), 50–54. <https://doi.org/10.1016/j.jelectrocard.2017.04.018>
- Meek, S., & Morris, F. (2002). ABC of clinical electrocardiography. Introduction. I-Leads, rate, rhythm, and cardiac axis. *BMJ*, *324*(7334):415–418.
- Michelucci, A., Bagliani, G., Colella, A., Pieragnoli, P., Porciani, M. C., Gensini, G., & Padeletti, L. (2002). P wave assessment: State of the art update. *Cardiac Electrophysiology Review*, *6*(3), 215–220.
- Shenasa, M. D., Josephson, M. E. & Mark Estes, N. A. III, (2015). *The ECG handbook of contemporary challenges* (246 p). Minneapolis, MN: Cardiotext Publishing.
- Nguyen, T. P., Qu, Z., & Weiss, J. N. (2014). Cardiac fibrosis and arrhythmogenesis: The road to repair is paved with perils. *Journal of Molecular and Cellular Cardiology*, *70*, 83–91.
- Nielsen, J. B., Kühl, J. T., Pietersen, A., Graff, C., Lind, B., Struijk, J. J., ...Holst, A. G. (2015). P-wave duration and the risk of atrial fibrillation: Results from the Copenhagen ECG Study. *Heart Rhythm: the Official Journal of the Heart Rhythm Society*, *12*(9), 1887–1895. <https://doi.org/10.1016/j.hrthm.2015.04.026>
- R Core Team. (2018). *R: A language and environment for statistical computing*. Vienna, Austria: R Foundation for Statistical Computing. <https://www.R-project.org/>
- Rajaganeshan, R., Ludlam, C. L., Francis, D. P., Parasramka, S. V., & Sutton, R. (2008). Accuracy in ECG lead placement among technicians, nurses, general physicians and cardiologists. *International Journal of Clinical Practice*, *62*(1), 65–70. <https://doi.org/10.1111/j.1742-1241.2007.01390.x>
- Rasmussen, M. U., Fabricius-Bjerre, A., Kumarathurai, P., Larsen, B. S., Domínguez, H., Kanters, J. K., & Sajadie, A. (2019). Common source of miscalculation and misclassification of P-wave negativity and P-wave terminal force in lead V1. *Journal of Electrocardiology*, *53*, 85–88.
- Schindelin, J., Arganda-Carreras, I., Frise, E., Kaynig, V., Longair, M., Pietzsch, T., ... Cardona, A. (2012). Fiji: An open-source platform for biological-image analysis. *Nature Methods*, *9*(7), 676–682.
- Schnabel, R. B., Sullivan, L. M., Levy, D., Pencina, M. J., Massaro, J. M., D'Agostino, R. B., ...Benjamin, E. J. (2009). Development of a risk score for atrial fibrillation (Framingham Heart Study): A community-based cohort study. *Lancet*, *373*(9665), 739–745.
- StataCorp. (2013). *Stata statistical software: Release 13*. College Station, TX: StataCorp LP.

How to cite this article: Rasmussen MU, Kumarathurai P, Fabricius-Bjerre A, et al. P-wave indices as predictors of atrial fibrillation. *Ann Noninvasive Electrocardiol*. 2020;25:e12751. <https://doi.org/10.1111/anec.12751>