

## **Supplementary material**

This appendix has been provided by the authors to give readers additional information about their work.

### **Supplement to:**

### **Sex difference in circulating sACE2 protein in moderate and severe COVID-19 and healthy controls**

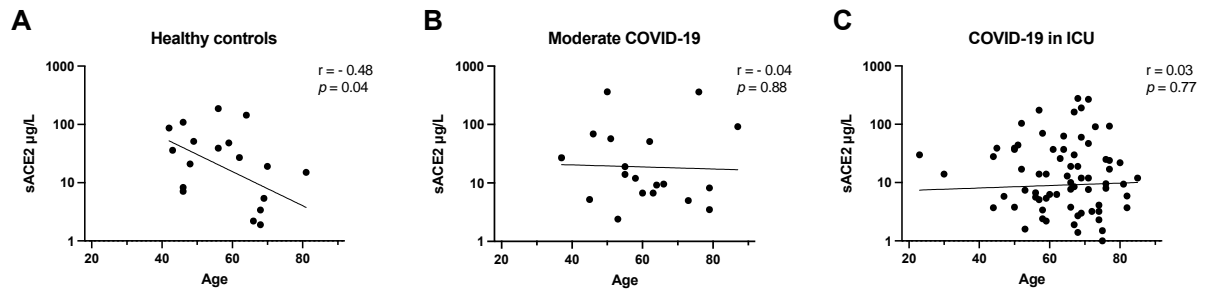
*Josefina Robertson, Bengt Nellgård, Lillemor Mattsson Hultén, Staffan Nilsson, Ketil Dalla, Mats Börjesson, Henrik Zetterberg, Joar Svanvik, Magnus Gisslén*

## Table of contents

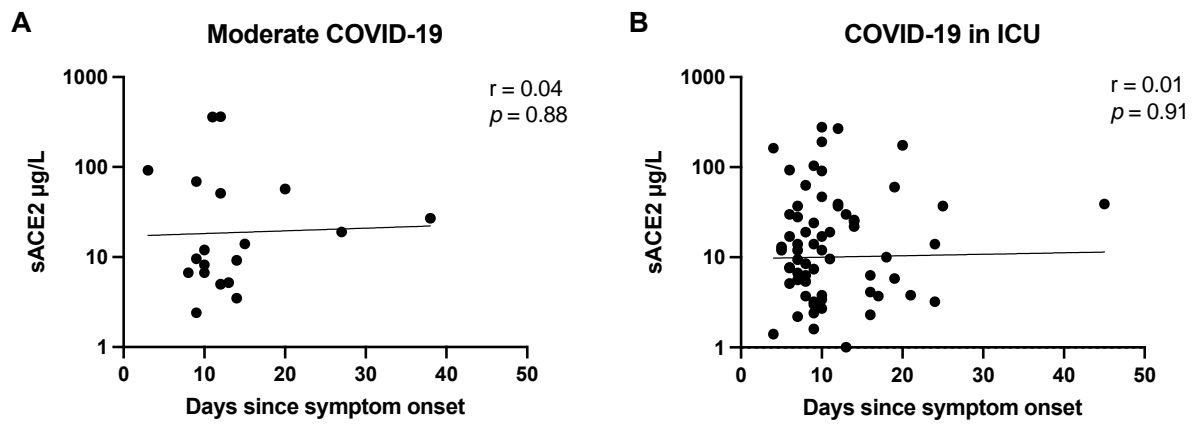
### Supplementary figures

<b>Figure S1.</b> Correlation between sACE2 concentration at hospital admission and age.	3
<b>Figure S2.</b> Correlation between sACE2 concentration at hospital admission and days since symptom onset.	4
<b>Figure S3.</b> sACE2 concentrations at hospital admission and follow-up in COVID-19 patients with and without corticosteroid treatment. Individual values and mean with SEM are shown for each group. Student's t-test was used for group comparisons.	5
<b>Figure S4.</b> sACE2 concentrations at hospital admission in COVID-19 patients with and without preexisting treatment with angiotensin-converting enzyme inhibitors (ACEi) or angiotensin receptor blockers (ARB). Individual values and mean with SEM are shown for each group. Student's t-test was used for group comparisons.	6
<b>Figure S5.</b> sACE2 concentrations at hospital admission in COVID-19 patients with and without cardiovascular comorbidities. Chronic heart disease includes coronary heart disease, heart failure, and cardiomyopathy. Individual values and mean with SEM are shown for each group. Student's t-test was used for group comparisons.	7
<b>Figure S6.</b> Correlations between sACE2 concentration at hospital admission and maximum level of C-reactive protein (CRP), maximum concentration of ferritin, and minimum lymphocyte count, stratified by sex, for patients with COVID-19 in the intensive care unit (ICU).	8

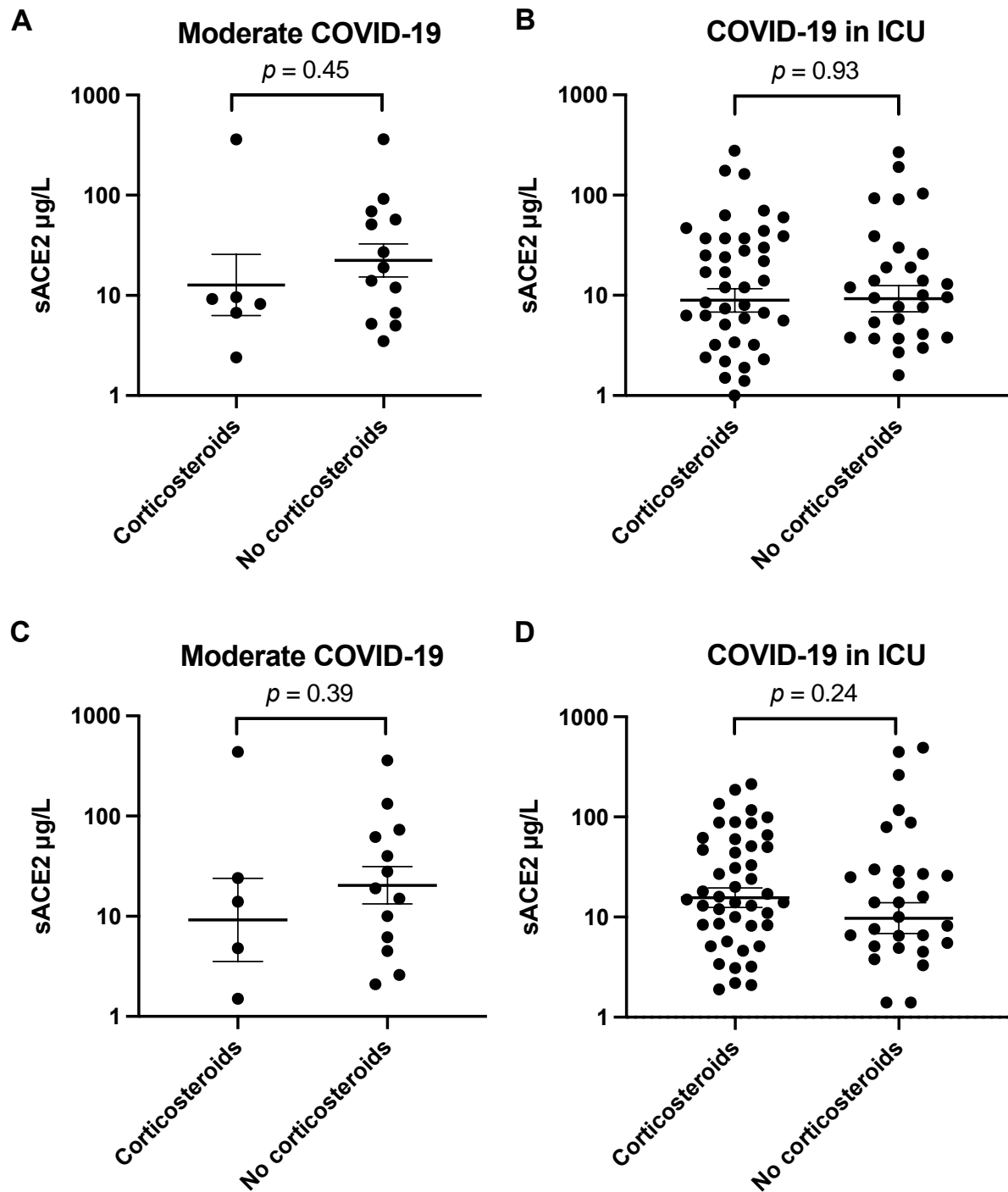
## Supplementary figures



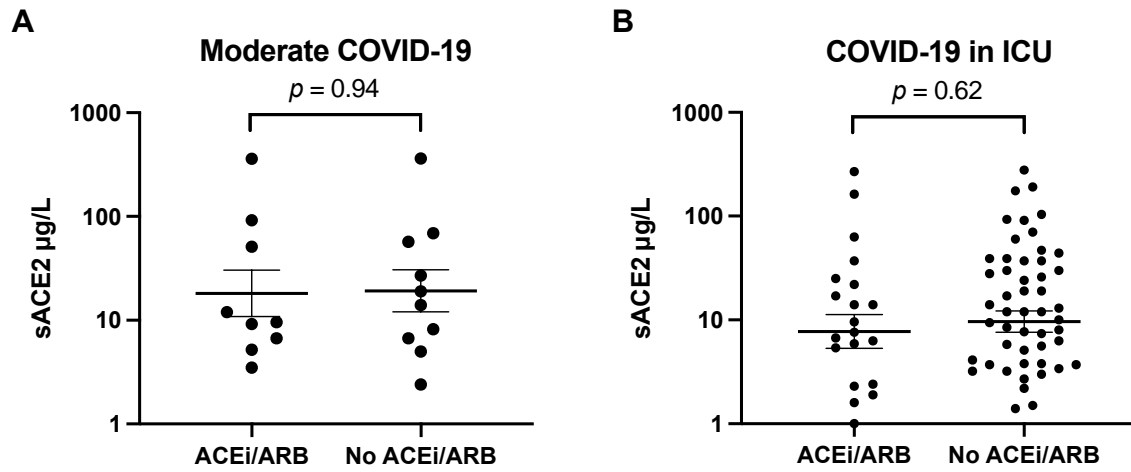
**Figure S1.** Correlation between sACE2 concentration at hospital admission and age.



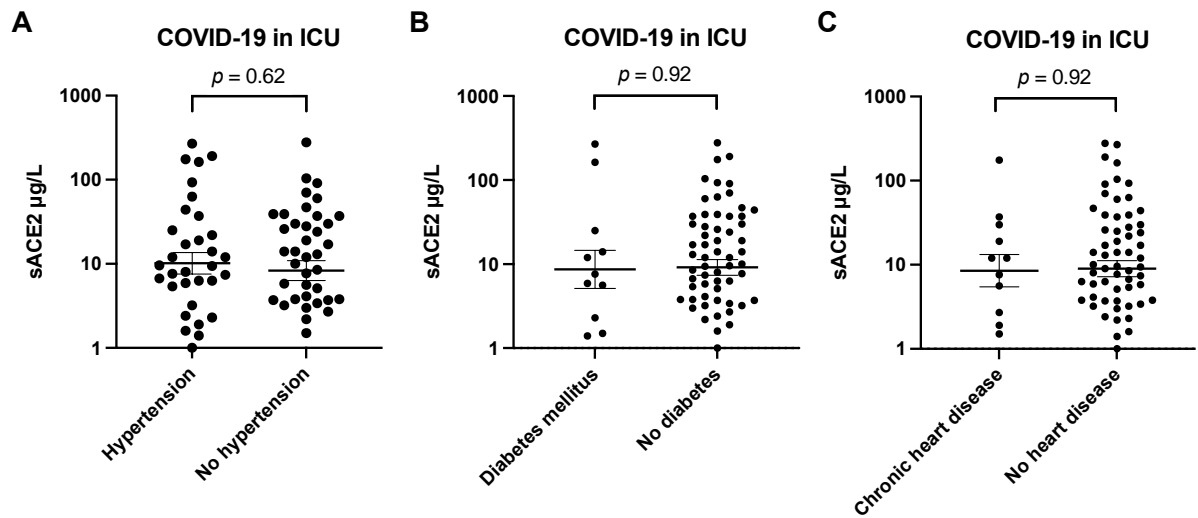
**Figure S2.** Correlation between sACE2 concentration at hospital admission and days since symptom onset.



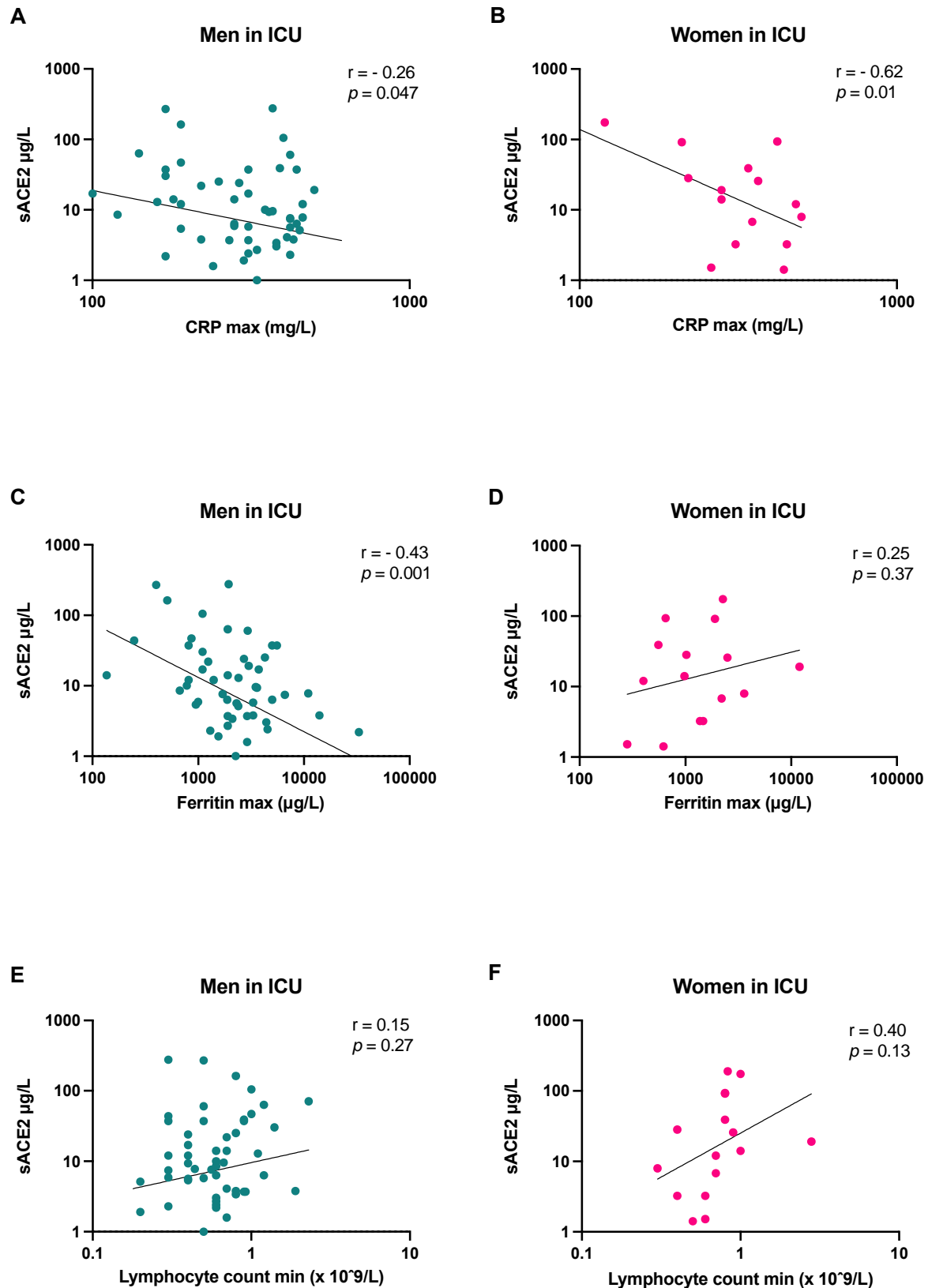
**Figure S3.** sACE2 concentrations at hospital admission (A and B) and at follow-up (C and D) in COVID-19 patients with and without corticosteroid treatment. Individual values and mean with SEM are shown for each group. Student's t-test was used for group comparisons.



**Figure S4.** sACE2 concentrations at hospital admission in COVID-19 patients with and without preexisting treatment with angiotensin-converting enzyme inhibitors (ACEi) or angiotensin receptor blockers (ARB). Individual values and mean with SEM are shown for each group. Student's t-test was used for group comparisons.



**Figure S5.** sACE2 concentrations at hospital admission in COVID-19 patients with and without cardiovascular comorbidities. Chronic heart disease includes coronary heart disease, heart failure, and cardiomyopathy. Individual values and mean with SEM are shown for each group. Student's t-test was used for group comparisons.



**Figure S6.** Correlations between sACE2 concentration at hospital admission and maximum level of C-reactive protein (CRP), maximum concentration of ferritin, and minimum lymphocyte count, stratified by sex, for patients with COVID-19 in the intensive care unit (ICU).