



Since January 2020 Elsevier has created a COVID-19 resource centre with free information in English and Mandarin on the novel coronavirus COVID-19. The COVID-19 resource centre is hosted on Elsevier Connect, the company's public news and information website.

Elsevier hereby grants permission to make all its COVID-19-related research that is available on the COVID-19 resource centre - including this research content - immediately available in PubMed Central and other publicly funded repositories, such as the WHO COVID database with rights for unrestricted research re-use and analyses in any form or by any means with acknowledgement of the original source. These permissions are granted for free by Elsevier for as long as the COVID-19 resource centre remains active.

SECTION 2 Syndromes by Body System: The Respiratory System

28

Community-Acquired Pneumonia

RICHARD G. WUNDERINK

KEY CONCEPTS

- Community-acquired pneumonia (CAP) is the most common cause of admission of adults in the USA.
- Diagnosis of community-acquired pneumonia is relatively easy in previously healthy patients but may be challenging in those with underlying cardiopulmonary disease or in the elderly.
- The highest yield for diagnostic testing for CAP etiology is in the critically ill and those with risk factors for drug-resistant pathogens.
- The majority of hospitalized CAP patients can be treated with either a respiratory fluoroquinolone or cephalosporin/macrolide combination.
- Alternative antibiotic treatment should be based on presence of multiple risk factors for drug-resistant pathogens (i.e. healthcare-associated pneumonia), specific risks (e.g. travel or zoonotic risks), or unique syndromes (e.g. toxin-mediated community-acquired MRSA syndrome).
- Decisions regarding initial placement in an intensive care unit (ICU) of tenuous CAP patients should be based on the number of minor physiologic factors and laboratory abnormalities associated with risk of subsequent deterioration.
- Number of deaths by pneumonia is decreasing in the world linked to child vaccination of pneumococcus and large-scale use of antibiotics in India/China.

Introduction

Captain of the men of death ...

Sir William Osler MD

Community-acquired pneumonia (CAP) is one of the most underappreciated medical illnesses in the USA. The combination of pneumonia and influenza is the ninth leading cause of death overall and the most common cause of infectious death in the USA, causing an estimated 50 000 deaths in 2010.¹ This number is likely an underestimate because many deaths caused directly by CAP are coded as sepsis, for which pneumonia is the most common source,² or attributed to an underlying condition (such as cancer and Alzheimer's disease), for which pneumonia is the terminal event. For example, the proximate cause of death in >40% of patients with dementia is pneumonia.³ Lower respiratory tract infection remains the leading cause of infectious death in the world as well, exceeding deaths from tuberculosis, human immunodeficiency virus (HIV) and malaria combined.⁴

CAP is the most common reason for hospital admission of adults in the USA.⁵ It is a common cause of severe complications, including septic shock,² acute respiratory distress syndrome (ARDS) and acute renal failure. Even in survivors, hospital admission for CAP has been associated with increased subsequent mortality and with accelerated cognitive decline.

CAP is also costly, with the estimated annual cost of CAP in the USA being \$10.8 billion.^{6,7} Indirect costs are also substantial: CAP is a major cause of work days and days of school lost to illness.

The mortality rate from CAP has changed very little until the last decade. Two factors likely have contributed to this recent decrease: widespread use of conjugate pneumococcal vaccines in children, with

a beneficial effect of herd immunity on adults,⁸ and more extensive management of adults according to guideline-recommended antibiotic therapy.⁹

Diagnosis

Diagnosis of classic CAP is not difficult in patients without underlying cardiopulmonary disease. A triad of (1) evidence of infection (fever or chills, leukocytosis) with (2) signs or symptoms localizing to the respiratory system (cough, increased sputum production, shortness of breath, chest pain, abnormal pulmonary exam with crackles, signs of consolidation, or finding of a pleural effusion), accompanied by (3) a new or changed radiographic infiltrate, usually accurately defines a patient with CAP. In patients with lung cancer, pulmonary fibrosis or other chronic infiltrative lung diseases, and congestive heart failure (CHF),¹⁰ the diagnosis of CAP can be very difficult. Atypical presentations also complicate diagnosis. Confusion may be the only presenting symptom in the elderly, leading to delay in diagnosis.¹¹

The differential diagnosis of CAP (Table 28-1) results from either noninfectious inflammatory disorders that also cause radiographic infiltrates or concurrent non-lower respiratory tract infection with other causes of infiltrate. Viral upper respiratory tract infection (URI) in association with worse CHF is probably the most common pneumonia mimic, given the frequency of both disorders.

RADIOLOGY

Radiographic infiltrates may also be subtle: an individual radiologist may miss infiltrates in up to 15% of cases and two radiologists reading the same chest radiograph disagree in 10% of cases.¹² Computed tomography (CT) detects alveolar infiltrates in a not inconsequential number of patients with manifestations of CAP but normal chest radiographs.¹³ The inflammatory reaction caused by antibiotic-induced bacterial lysis and aggressive fluid resuscitation will often unmask these otherwise radiographically occult infiltrates on a subsequent chest radiograph.

The most difficult radiographic challenge is detection of acute pneumonia in the setting of chronic lung disease, such as pulmonary fibrosis, pneumoconioses, bronchiectasis, cystic fibrosis and even

TABLE 28-1 Differential Diagnosis of Community-Acquired Pneumonia

Abnormal CXR	Normal CXR
Congestive heart failure*	Acute exacerbation of COPD
Aspiration pneumonitis	Influenza
Pulmonary infarction	Acute bronchitis
Acute exacerbation of pulmonary fibrosis	Pertussis
Acute exacerbation of bronchiectasis Acute eosinophilic pneumonia Hypersensitivity pneumonitis Pulmonary vasculitis Cocaine-induced ('crack lung')	Asthma*

CXR, chest radiograph.

*Fever or other signs of infection due to concomitant upper respiratory infection.

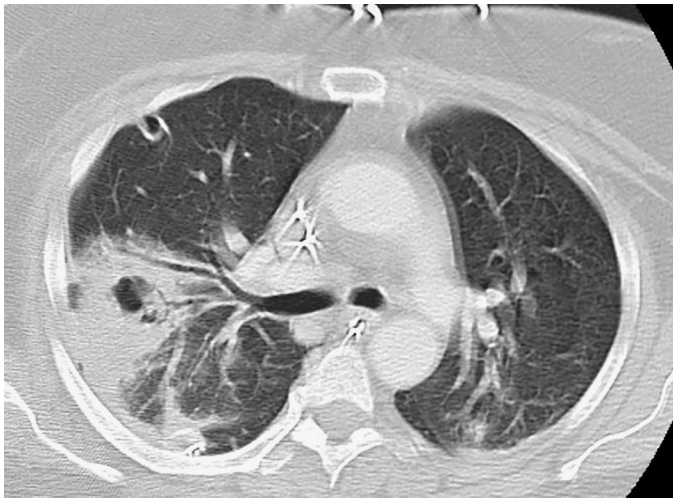


Figure 28-1 Cavitory pneumonia in an otherwise healthy young adult caused by methicillin-resistant *Staphylococcus aureus* (MRSA).

TABLE 28-2 Differential Diagnosis of Cavitory/Necrotizing CAP in Non-immunocompromised Patients

- Toxigenic *Staphylococcus aureus*, including MRSA
- Anaerobic aspiration syndrome
- *Klebsiella* spp.
- *Streptococcus milleri*
- Right-sided endocarditis
- Coccidioidomycosis
- Blastomycosis
- Tuberculosis
- Nontuberculous mycobacteria

emphysema or CHF. Comparison to chest radiographs at a time of clinical stability is very important for these cases. If not available, other clinical manifestations, including use of biomarkers,¹⁰ may be required to avoid excessive antibiotic therapy.

The pattern of radiographic infiltrates is occasionally helpful in the differential diagnosis of etiology. Cavitory CAP (Figure 28-1) has a limited differential diagnosis (Table 28-2), although it varies somewhat by geographic location. Conversely, even though viral or atypical bacterial pneumonia more commonly cause diffuse interstitial infiltrates, this pattern is not distinctive enough to guide antibiotic therapy.

Radiographic pattern is also associated with prognosis. Initial presence of bilateral infiltrates is consistently associated with greater mortality and need for ICU care.⁹ A rapid increase in radiographic infiltrates, whether due to uncontrolled infection or development of ARDS, in the initial 24–48 hours, is also associated with antibiotic failure and need for ICU care.¹⁴ Conversely, presence of a pleural effusion has been associated with better prognosis.

Pathophysiology

Pneumonia results from the proliferation of microbial pathogens, most commonly bacteria, but occasionally by viruses, fungi, parasites and other infectious agents, in the alveoli and the host's response to those pathogens. The latter is critically important since recent data have demonstrated the presence of a normal bacterial microbiome in the alveoli.

BACTERIAL INVASION

Infection of the lower respiratory tract can occur at each level, with a varying proportion of viral and bacterial etiologies at each level, and can be confused with pneumonia. Respiratory bronchiolitis due to respiratory syncytial virus (RSV) in children is a classic example of confusion between CAP and more proximal level infection, with the

increased secretions and airway narrowing due to RSV airway infection leading to a radiographic infiltrate from atelectasis. Conversely, infection can progress through the entire respiratory tract, such as influenza URI followed by cough and wheezing from tracheobronchitis, culminating in hypoxemia and infiltrates from influenza pneumonia.

Classically, pneumonia is thought to result from introduction of pathogens into the lower respiratory tract through four pathways. Aspiration from the oropharynx is likely the most common for bacterial pneumonia. Small-volume aspiration occurs frequently during sleep (especially in the elderly) and in patients with decreased levels of consciousness. Viruses and tuberculosis are inhaled as contaminated droplets. Rarely, pneumonia occurs via hematogenous spread (e.g., from tricuspid endocarditis) or by contiguous extension from an infected pleural or mediastinal space.

Recognition that a normal flora exists at the alveolar level of the lung, rather than the distal lung being sterile, raises an alternative mechanism for development of bacterial pneumonia. The normal lung microbiome is similar to that of the normal oropharynx, predominantly streptococci (including the pneumococcus) but also including *Haemophilus*, *Mycoplasma* and other CAP pathogens, but at significantly lower concentrations.^{15,16} CAP may therefore result from a perturbation in the normal balance, for example a viral URI, resulting in disruption of the balance and outgrowth of a specific species. This hypothesis is very consistent with the frequent association between antecedent or concomitant viral infection and bacterial CAP.

HOST DEFENSES

For pneumonia to occur, lung host defenses must be overcome. The normal lung host defenses are formidable, given that the lung represents the greatest amount of surface area in contact with the external environment and is therefore routinely exposed to infectious microorganisms. As a result, the lungs and entire respiratory tract have effective and redundant host defense mechanisms in order to respond to this infectious challenge.

Mechanical factors are critically important for inhaled pathogens; the hairs and turbinates of the nares and the branching architecture of the tracheobronchial tree trap microbes on the airway lining, where mucociliary clearance and local antibacterial factors either clear or kill potential pathogens. The gag reflex and cough play major roles in protection from aspiration challenges.

By adhering to mucosal cells of the oropharynx, normal flora prevent attachment of pathogenic bacteria and thereby decrease risk of aspirating these more virulent bacteria. Disruption of the normal microbiome of both oropharynx and lung by antibiotics, viruses, or other factors not only leads to increased risk of pneumonia but also predisposes to more antibiotic-resistant pathogens.

When these mechanical barriers are overcome or when the microorganisms are small enough to be directly inhaled to the alveolar level, resident alveolar macrophages are extremely efficient at clearing and killing pathogens. Macrophages are assisted by the alveolar epithelial cells, which produce proteins (e.g., surfactant proteins A and D) with opsonic properties or direct antibacterial or antiviral activity. Once engulfed by the macrophage, the pathogens – even if they are not killed – are eliminated via either the mucociliary elevator or the lymphatics.

Only when the capacity of the alveolar macrophages to ingest or kill the microorganisms is exceeded does clinical pneumonia become manifest. In that situation, the alveolar macrophages initiate the inflammatory response to bolster lower respiratory tract defenses.

Localizing infection to the alveolar space is an important but underappreciated component of host immunity. Factors preventing bacteremia and defending the vascular space are poorly understood. Even the presence of bacterial DNA in peripheral blood appears to correlate with mortality and organ dysfunction.¹⁷ Clearly, preformed antibody is important, since the most incontrovertible evidence of pneumococcal vaccine efficacy is prevention of invasive disease, including bacteremia.¹⁸ Ability to opsonize bacteria is also important since deficiencies in mannose-binding lectin and complement are also

associated with increased bacteremia and invasive pneumococcal disease.^{19,20} Splenic clearance of opsonized bacteria is also important for the pneumococcus and other encapsulated bacteria.

CLINICAL MANIFESTATIONS

The host inflammatory response, rather than simply proliferation of micro-organisms, triggers the clinical syndrome of pneumonia. Release of inflammatory mediators, such as interleukin (IL)-1 and tumor necrosis factor (TNF), results in fever. Chemokines, such as IL-8 and granulocyte colony-stimulating factor, stimulate bone marrow release of neutrophils and homing to the lung, producing both peripheral leukocytosis and increased purulent secretions. Erythrocytes crossing the alveolar–capillary membrane in the stage of red hepatization result in hemoptysis. Inflammatory mediators released by macrophages and the newly recruited neutrophils cause an alveolar capillary leak equivalent to that demonstrated for ARDS, although initially localized in pneumonia. Radiographic infiltrates and rales detectable on auscultation are a direct result of the alveolar–capillary leak syndrome. Hypoxemia results from alveolar filling but may be exacerbated by paralysis of the hypoxic vasoconstriction that would normally occur with fluid-filled alveoli by some bacterial pathogens. Increased respiratory drive as part of the systemic inflammatory response syndrome leads to respiratory alkalosis. Decreased compliance due to capillary leak, hypoxemia, increased respiratory drive, increased secretions and occasionally infection-related bronchospasm all lead to dyspnea and, if severe enough, respiratory failure.

IMMUNOCOMPROMISE

People with no recognizable defect in any component of host defense can develop CAP. However, the more severe the manifestations and the less virulent the pathogen, the more likely some component of the host defense is deficient. Genetic deficiencies in every component of host defense have been described and the list of primary immunodeficiency syndromes increases yearly.²¹ Extrinsic factors such as cigarette smoke, alcohol intoxication and particulate matter inhalation can contribute. However, the most important risks are age and co-morbid illnesses, such as diabetes mellitus, CHF, emphysema, cirrhosis and liver failure.²² Even in cases of overt immunocompromise, such as neutropenia from chemotherapy, leukemia and HIV disease, the usual CAP pathogens are still important although the differential of etiologies becomes much larger.

Pathology

The series of pathologic changes seen in classic lobar bacterial pneumonia is described in Table 28-3. The *gray hepatization* phase corresponds with successful containment of the infection and improvement in gas exchange, with restoration of the normal hypoxic vasoconstrictor response. This classic pattern does not apply to pneumonia of all etiologies, especially viral or *Pneumocystis* pneumonia. If microaspiration is the underlying mechanism, a bronchopneumonia pattern is seen and the corresponding phases may not occur.

Epidemiology

CAP occurs in every ecological niche in the world from the Arctic regions to deserts to jungle, although the most frequent pathogens may vary. Table 28-4 lists geographic and zoonotic considerations for etiology. A general seasonal pattern occurs, with higher rates in the winter/rainy season, tracking most closely with respiratory viruses such as influenza and RSV.

CAP occurs in all ages but incidence and mortality are greatest in the extremes of age.²³ In infants, lack of humoral immunity to common pathogens such as influenza, RSV and *Streptococcus pneumoniae* is the major factor. In the elderly, a senescent host immune system and high frequency of co-morbid illnesses play the greatest role. Females are slightly more likely to develop CAP while males are more likely to die from CAP.

In the USA, 80% of CAP patients are treated as outpatients. Of hospitalized patients, 15–20% require ICU monitoring or interventions.

Etiology

The major etiologies of CAP are listed in Table 28-5. By far, the most common bacterial etiology is *Strep. pneumoniae*. The actual proportion caused by viruses is difficult to determine since the majority of detections are from the upper respiratory tract, and it is unclear whether the virus present in the oropharynx is causing the pneumonia, predisposed to a superinfection bacterial pneumonia, or is simply an innocent bystander. This dilemma is most obvious for human rhinovirus detection in adults.

TABLE 28-3	Pathologic Phases of Classic Lobar Pneumonia
	Exudative <ul style="list-style-type: none"> • Proteinaceous fluid-filling alveolus • Bacteria present • Macrophages but few neutrophils
	Red Hepatization <ul style="list-style-type: none"> • Extravasated erythrocytes • Fewer bacteria • Minimal neutrophils
	Gray Hepatization <ul style="list-style-type: none"> • Many neutrophils • No bacteria • No additional erythrocytes • Abundant fibrin
	Resolution <ul style="list-style-type: none"> • Macrophages again predominate • Necrotic neutrophils, cellular ghosts • Debris of bacteria, fibrin

TABLE 28-4 Zoonoses and Geographic Considerations

Travel	Pathogen(s)	Exposure	Pathogen(s)
Ohio/Mississippi/St Lawrence river valleys	<i>Histoplasma capsulatum</i>	Bird or bat dung	<i>Histoplasma capsulatum</i>
Southwestern USA	<i>Coccidioides</i> spp. Hantavirus <i>Yersinia pestis</i>	Pet birds	<i>Chlamydomyces psittaci</i>
Upper Midwest USA woods	<i>Blastomyces</i>	Rabbits	<i>Francisella tularensis</i>
South East Asia	<i>Burkholderia pseudomalleoli</i> Avian influenza <i>Acinetobacter</i> spp.	Exposure to sheep, goats, parturient cats	<i>Coxiella burnetii</i>
Hotel or cruise ship stay in last 2 weeks	<i>Legionella</i> spp.	Sick dogs	<i>Blastomyces</i>

TABLE 28-5 Common Etiologies of CAP

BACTERIAL	VIRAL
<ul style="list-style-type: none"> • <i>Streptococcus pneumoniae</i> • <i>Staphylococcus aureus</i> • <i>Mycoplasma pneumoniae</i> • <i>Chlamydia pneumoniae</i> • <i>Legionella</i> spp. • Other streptococci • <i>Strep. mitis</i> • <i>Strep. agalactia</i> • <i>Strep. viridans</i> • <i>Strep. sanguis</i> • <i>Haemophilus</i> spp. • <i>Pseudomonas aeruginosa</i> • Enterobacteriaceae • <i>Escherichia coli</i> • <i>Klebsiella</i> spp. • <i>Acinetobacter</i> spp. • <i>Branhamella</i> sp. 	<ul style="list-style-type: none"> • Rhinovirus[†] • Influenza • Respiratory syncytial virus • Human metapneumovirus • Coronaviruses • SARS • MERS • Adenovirus • Parainfluenza virus • Varicella
	FUNGAL
	<ul style="list-style-type: none"> • <i>Pneumocystis jirovecii</i>

SARS, severe acute respiratory syndrome; MERS, Middle East respiratory syndrome.

*Roughly order of frequency.

†Association with CAP but unclear causality.

TABLE 28-6 Chronic Pulmonary Infections that May Present as Acute Pneumonia

- Endemic fungi
 - Histoplasmosis
 - Blastomycosis
 - Coccidioidomycosis
- Actinomycosis
- Nocardia
- Mycobacterial infection
 - Tuberculosis
 - Nontuberculous mycobacteria
- Melioidosis (*Burkholderia pseudomallei*)

TABLE 28-7 Community-Onset Pneumonia Syndromes in Special Populations

Syndrome	Examples
Hospital-acquired	Recent discharge, long-term weaning facilities, rehabilitation institutes
Healthcare-associated	Nursing homes, chronic hemodialysis
Immunocompromised	Chemotherapy, HIV disease, transplant, acute leukemia/lymphoma
Aspiration	Severe alcoholism, seizure disorder, stroke

Less common etiologies are usually associated with specific geographic areas or exposure to specific zoonoses (see Table 28-4). Occasionally, more chronic pulmonary infections can masquerade as acute CAP (Table 28-6) and should be considered in endemic areas and if the time course is more indolent.²⁴

HEALTHCARE-ASSOCIATED PNEUMONIA (HCAP)

Concern has been raised about community-onset pneumonia caused by pathogens usually associated with hospital-acquired pneumonia or even ventilator-associated pneumonia, including methicillin-resistant *Staphylococcus aureus* (MRSA) and multidrug resistant (MDR) gram-negative pathogens.^{9,25-27} Several community-onset pneumonia syndromes at risk for more drug-resistant pathogens can be defined (Table 28-7). In the USA, transfer of hospitalized patients to long-term ventilator-weaning facilities or acute rehabilitation institutes, rather than completing their recovery in an acute care hospital, does not decrease their risk of the typical hospital-acquired pathogens. These patients have previously been lumped together with those in lower-risk

TABLE 28-8 Criteria for Healthcare-Associated Pneumonia (HCAP)

Original Criteria ⁹	Pneumonia-Specific Criteria ²⁶
Hospitalization for ≥2 days in previous 90 days	Hospitalization for ≥2 days in previous 90 days
Nursing home or extended care facility residents	Antibiotics in previous 90 days
Chronic home infusion therapy	Non-ambulatory status
Chronic dialysis within 30 days	Tube feedings
Home wound care	Immunocompromise
Family member with MDR pathogen	Gastric acid suppressive agents
Immunosuppressive disease/therapy*	

*Not included in original criteria but frequently included in many HCAP studies.

settings such as nursing homes and chronic dialysis units. An episode of aspiration weeks prior to presentation without intervening medical attention is the classic predisposition for anaerobic pneumonia, often complicated by empyema as well. Otherwise, anaerobes play a minor role in usual CAP.

HCAP was proposed as a discrete entity with the goal of identifying those patients who were more likely to receive initially inappropriate antibiotic therapy, and have an associated higher mortality risk.^{27,28} While early observational studies of culture-positive cases suggest improved outcome from broad-spectrum antibiotic therapy in persons with HCAP risk factors,^{27,28} prospective studies using the same definition find lower rates of antibiotic-resistant pathogens and many culture-negative cases.^{26,29,30} Even more concerning were reports of adverse outcomes among persons with HCAP risk factors treated with broad-spectrum antibiotic therapy.^{26,31}

Rather than using the original definition derived from healthcare-associated bacteremia, a prospective multicenter study identified six independent risk factors (Table 28-8) for pneumonia caused by pathogens resistant to the usual inpatient antibiotic regimens recommended by Infectious Diseases Society of America (IDSA)/ American Thoracic Society (ATS) guidelines.²⁶ While the risk factors were similar to the original, the incidence of drug-resistant pathogens was not significantly increased until three or more risk factors are present. A separate analysis specifically for MRSA found that presence of one MRSA-specific risk factor (prior MRSA infection/colonization, chronic hemodialysis, or heart failure) and another pneumonia-specific risk factor may warrant MRSA coverage (but not dual anti-pseudomonal antibiotics). Importantly, this new definition would result in significantly fewer patients receiving broad-spectrum antibiotics than the original HCAP definition.⁹

COMMUNITY-ACQUIRED MRSA CAP

The MRSA identified in patients with HCAP risk factors is likely a hospital-acquired strain. However, in the USA a specific USA300 strain of MRSA causes CAP in previously healthy patients, specifically without HCAP or other risk factors for MDR pathogens.^{32,33} Many of the characteristic presenting features of this MRSA strain (Table 28-9), as well as the methicillin-sensitive variant, are a result of exotoxin production.³² The Pantone-Valentine Leukocidin (PVL) gene is an effluent marker of toxigenic strains but is not the main exotoxin involved in the increased lethality.³³ The USA300 strain is increasingly being found in hospital-acquired MRSA infections, blurring some of the epidemiologic distinctions.

DETERMINATION OF ETIOLOGY

While the diagnosis of CAP is relatively straightforward, determination of etiology is very difficult.⁹ Even with aggressive use of currently available diagnostic tests, the etiology remains unknown in >50% of cases.

A complete history of travel, pets and hobbies is critical for suspicion of the less common pathogens (see Table 28-4), as well as CAP

TABLE 28-9 Clinical Features Suggesting Community-Acquired MRSA Pneumonia

Cavitary infiltrate or necrosis	Neutropenia
Rapidly increasing pleural effusion	Erythematous skin rash
Gross hemoptysis (not just blood-streaked)	Skin pustules
Concurrent influenza	Young, previously healthy Severe CAP in summer months

TABLE 28-10 Indications for More Aggressive Diagnostic Testing in Cap

ICU admission	Cirrhosis/severe chronic liver disease*
HCAP risk factors ²⁶	Severe chronic obstructive lung disease [†]
Failure of outpatient antibiotic therapy	Asplenia (anatomic and functional)*
Cavitary infiltrates on presentation	Recent travel (within 2 weeks) [‡]
Leukopenia	Positive <i>Legionella</i> or pneumococcal urinary antigen test [†]
Active alcohol abuse	Pleural effusion

*Mainly blood cultures.

[†]Mainly respiratory sample.

[‡]*Legionella* urinary antigen.

mimics (see Table 28-1). Unfortunately, diagnosis of many of these pathogens requires acute and convalescent serology or tests sent to a reference laboratory, making most treatment empirical.

In general, the greater the likelihood of unusual bacterial pathogens, the greater the yield of diagnostic tests. Patients with severe CAP requiring ICU admission³⁴ and/or HCAP risk factors²⁶ started on broad-spectrum antibiotics have the clearest indication for extensive diagnostic testing, including attempts at obtaining sputum culture. The yield of testing is higher in the critically ill CAP patient, possibly because endotracheal intubation allows direct sampling of the lower respiratory tract. Other indications and the corresponding appropriate tests are listed in Table 28-10.⁹

Biomarkers have been used in an attempt to differentiate viral from bacterial pneumonia. The best validated is procalcitonin (PCT).^{10,35} This pro-hormone is elevated in uncontrolled bacterial infections and actively suppressed by the interferon response induced in many viral pneumonias. However, PCT may be low in atypical pathogen CAP as well and is clearly elevated in severe viral CAP, such as seen in the 2009–2010 influenza A pandemic, with or without evidence of superimposed bacterial pneumonia. C-reactive protein (CRP) is more non-specific than PCT in CAP but may be a better predictor of treatment failure.¹⁴

Treatment

Almost every antibiotic approved by the US Food and Drug Administration in the past four decades has an indication for CAP. In general, keys to appropriate therapy are adequate coverage of *Strep. pneumoniae* and the atypical bacterial pathogens (*Mycoplasma*, *Chlamydia*, *Legionella*). The recommended regimens from the IDSA/ATS guideline are listed in Table 28-11.⁹ European guidelines differ in that β -lactam antibiotics (typically amoxicillin) remain the recommended agent for mild–moderate CAP.^{36,37} A recent study from the Netherlands suggests that a strategy of empirical treatment for moderately severe CAP with β -lactam monotherapy is noninferior to either β -lactam–macrolide combination therapy or fluoroquinolone monotherapy.³⁸ The primary factors to discriminate among the antibiotic options, therefore, should be local resistance patterns in community organisms, recent antibiotic use, which increases the risk of class resistance,³⁹ and cost.

TABLE 28-11 IDSA/ATS Recommended Empirical Antibiotic Therapy

Disposition	Recommended Class	Typical Examples
Outpatient	Macrolide	Azithromycin 500 mg po once, then 250 mg q day
	Doxycycline	Clarithromycin 500 mg po BD
Recent oral antibiotics	Change antibiotic class Consider: Fluoroquinolone Amoxicillin \pm clavulanate	
Non-ICU inpatient	Respiratory fluoroquinolone or β -lactam and macrolide	Moxifloxacin 400 mg q day or Levofloxacin 750 mg po q day Ceftriaxone 1–2 g q day or Ampicillin–sulbactam 2 g iv q8h plus Azithromycin 500 mg q day
ICU patient	Ceftriaxone plus Azithromycin or Respiratory fluoroquinolone	

Since outpatient treatment failure is rare and the guideline-compliant therapy covers 90% of etiologies in hospitalized patients, deviation from these guidelines should have appropriate justification. Presence of risk factors for MDR (see Table 28-8) or zoonotic/geographic-specific pathogens (see Table 28-4) may justify alternative empirical coverage but should be accompanied by aggressive attempts at diagnosis, in order to appropriately de-escalate broader-spectrum antibiotic therapy.^{26,40} Quality improvement projects consistently show that as compliance with IDSA/ATS guideline antibiotics increases, mortality rates and length of stay decrease.^{41,42} Conversely, continuing broad-spectrum antibiotics for CAP patients without documented MDR pathogens is associated with excess mortality.^{26,31}

Macrolides appear to have beneficial effects in excess of their coverage of atypical pathogens, especially in the more severely ill patient.^{43,44} These benefits may be due to immunomodulatory effects on the host, less cell lysis-induced cytokine release, or inhibition of bacterial virulence factors, such as biofilms, quorum sensing and toxin production.

CA-MRSA would require specific coverage since the regimens in Table 28-11 have inadequate MRSA coverage. For patients with HCAP-MRSA risk factors, linezolid has a 15% better clinical response rate than vancomycin.⁴⁵ Because manifestations of the USA300 strain of CA-MRSA CAP are disproportionately exotoxin-mediated (see Table 28-7),³² treatment with antibiotics that suppress toxin production, such as linezolid or clindamycin (added to vancomycin), are preferred and have been associated with lower mortality.³³ Ceftaroline, the only antibiotic approved for CAP recently, has MRSA activity as well.

One of the most critical elements of treatment is early initiation of appropriate antibiotic therapy after the diagnosis of CAP has been made. The first dose should be given in the emergency department (ED) to allow closer monitoring of the initial response and to assure that the initial dose is given promptly.⁹ Timing of the first dose is even more important when the patient presents with septic shock; the goal should be initial antibiotic within the first hour.⁴⁶

For uncomplicated bacterial CAP, the usual duration of treatment should be 5–7 days. Certain pathogens, such as *Legionella*, may require up to 2 weeks of therapy. Conversion to an equivalent oral agent is appropriate whenever the patient is clinically improving and able to tolerate food.

INFLUENZA TREATMENT

Treatment of influenza pneumonia has not been prospectively studied specifically. Experience during the 2009–10 pandemic and retrospective analysis⁴⁷ suggest that antivirals should be used if a patient has a

radiographic infiltrate, no matter the duration of symptoms. The potential for oseltamivir-resistant strains should be monitored from CDC and local health department information as each influenza season progresses. The major issue is whether antibiotics are always needed for influenza CAP, with no clear data or consensus. For a full description of the use of antiviral therapy, see Chapter 154.

Other Management

DISPOSITION

The major determinant of the cost of CAP care is the physician's decision to hospitalize. Of CAP patients who present to the ED, 40–60% are admitted,^{22,48,49} with considerable variability in admission for patients with similar clinical characteristics. Use of scoring systems, such as the Pneumonia Severity Index (PSI)²² and the CURB-65 Score⁵⁰ that were developed specifically to guide admission decisions, result in fewer admissions of low acuity patients with no increase in adverse outcomes.⁴⁸ PSI is a complex score, requiring formal scoring or electronic decision support whereas CURB-65 (confusion, uremia, respiratory rate, blood pressure, age >65 years) is both easy to remember and calculate, although not as well validated as PSI. Both scores are valid for analysis of groups of CAP admissions, but admission of low score patients is legitimate, for both objective reasons (e.g. low arterial saturations) and subjective (e.g. unreliable home support, concern regarding compliance).

Decisions regarding initial ICU placement of tenuous CAP patients probably have the greatest potential impact on mortality. Patients transferred to the ICU within 48 hours of initial admission to a general medical service have higher mortality than those with an obvious need for ICU care (mechanical ventilation or hypotension requiring vasopressors) at the time of admission.^{49,51,52} The fraction of hospitalized pneumonia patients admitted to the ICU also varies widely (5–20%) depending on hospital and health system characteristics.^{49,53–55}

The IDSA/ATS guidelines suggest that presence of ≥ 3 of a group of nine minor criteria (Table 28-12) warrant consideration for ICU admission.⁹ Other scores to predict clinical deterioration with similar parameters have also been developed and validated.^{53–55} For each, the probability of need for invasive ventilatory or vasopressor therapy increases with increasing number of criteria or points, with a threshold score around three to consider ICU admission. All these ICU admission scores are overly sensitive, resulting in substantially more ICU admissions if followed rigidly.^{9,49} The most appropriate use of these scores may be to focus attention on patients with high scores while still in the ED. A quality-improvement study demonstrated that increased attention in the ED to patients with ≥ 3 IDSA/ATS minor criteria

resulted in decreased mortality (23.4% to 5.7%) and fewer floors to ICU transfers (32.0% to 14.8%) without significantly increasing direct ICU admissions.⁴⁹

PLEURAL EFFUSION

A new pleural effusion in a patient admitted with CAP should always prompt concern for empyema or complicated parapneumonic effusion (generally pleural fluid pH <7.2). Early diagnosis by thoracentesis, placement of a chest tube and use of tissue plasminogen activator combined with DNAase can prevent the need for surgical intervention in the majority of cases.⁵⁶ Management of pleural effusions in patients with CHF and intermittent pleural effusions is less straightforward but thoracentesis in all unclear situations is warranted.

ADJUNCTIVE TREATMENT

Some patients benefit from aerosolized β -agonist bronchodilators for wheezing or other bronchial hygiene maneuvers for difficult expectoration. Patients with viral lower respiratory tract infections occasionally require anticholinergic aerosols to control nonproductive cough.

Use of systemic corticosteroids in CAP patients who have no other indication, e.g. asthma or COPD exacerbation associated with pneumonia, remains controversial. In moderate disease, a potential benefit of shortening hospitalization is counterbalanced by an increased risk of superinfection.⁵⁷ In severe viral pneumonia, either SARS or the 2009–2010 influenza pandemic,⁵⁸ steroid use was associated with worse outcomes.

EXACERBATION OF CO-MORBID ILLNESSES

As mentioned, CAP can exacerbate underlying chronic illnesses such as asthma and COPD, diabetes mellitus and CHF. Up to 15–20% of patients admitted with pneumococcal CAP can have a new cardiovascular diagnosis during the acute hospitalization, including acute myocardial infarction, atrial fibrillation and other arrhythmias, or CHF.⁵⁹ Destabilization of co-morbid illness is more likely to cause hospital readmission than complications of CAP or its treatment.

Prevention

The main CAP preventive measures are vaccination and smoking cessation.⁹ Even among patients without obstructive lung disease, smokers are at increased risk of pneumococcal CAP.

INFLUENZA VACCINATION

Two forms of influenza vaccine are available – intramuscular inactivated influenza vaccine and intranasal live-attenuated cold-adapted influenza vaccine. The latter is contraindicated in immunocompromised patients. Specific vaccine components are reassessed yearly based on the main circulating strains in the opposite hemisphere. In the event of an influenza outbreak, unprotected patients at risk from complications should be vaccinated immediately and given chemoprophylaxis with oseltamivir for 2 weeks, at which time vaccine-induced antibody levels should be sufficiently protective.

PNEUMOCOCCAL VACCINE

A pneumococcal polysaccharide vaccine (PPV23) and a protein conjugate vaccine (PCV13) are both available in the USA. The vaccine efficacy of PPV23 has been questionable, particularly in the elderly and other at-risk populations. Administration of the protein conjugate vaccine to children has led to an overall decrease in the prevalence of antimicrobial-resistant pneumococci and in the incidence of invasive pneumococcal disease among both children and adults.^{18,60} However, vaccination may result in replacement of vaccine serotypes with non-vaccine serotypes, as was seen with serotypes 19A and 35B after introduction of the original 7-valent conjugate vaccine.⁶¹ The 13-valent conjugate vaccine is now also recommended for the elderly and for younger immunocompromised patients (see also Chapter 177).

TABLE 28-12 Minor Criteria for Consideration of ICU Admission for Severe CAP

IDSA/ATS Criteria ⁹	Other Criteria ^{53–55}
Confusion	Lactic acidosis
Uremia (BUN >20 mg/dL)	pH <7.30–7.35
Tachypnea (RR >30/min)	Low albumin
Bilateral radiographic infiltrates	Hyponatremia (<130 mEq/L)
Severe hypoxemia (P/F <250)	Leukocytosis >20 $\times 10^9$ /L
Thrombocytopenia	Hypoglycemia
Hypotension requiring aggressive fluid resuscitation	
Hypothermia	
Leukopenia	

BUN, blood urea nitrogen; RR, respiratory rate; P/F, PaO₂/FIO₂ ratio.

References available online at expertconsult.com.



KEY REFERENCES

- American Thoracic Society, Infectious Diseases of America: Guidelines for the management of adults with hospital-acquired, ventilator-associated, and healthcare-associated pneumonia. *Am J Respir Crit Care Med* 2005; 171(4):388-416.
- Attridge R.T., Frei C.R., Restrepo M.I., et al.: Guideline-concordant therapy and outcomes in healthcare-associated pneumonia. *Eur Respir J* 2011; 38:878-887.
- Charles P.G., Wolfe R., Whitby M., et al.: SMART-COP: a tool for predicting the need for intensive respiratory or vasopressor support in community-acquired pneumonia. *Clin Infect Dis* 2008; 47:375-384.
- Charlson E.S., Bittinger K., Haas A.R., et al.: Topographical continuity of bacterial populations in the healthy human respiratory tract. *Am J Respir Crit Care Med* 2011; 184:957-963.
- Dean N.C., Bateman K.A., Donnelly S.M., et al.: Improved clinical outcomes with utilization of a community-acquired pneumonia guideline. *Chest* 2006; 130:794-799.
- Fine M.J., Auble T.E., Yealy D.M., et al.: A prediction rule to identify low-risk patients with community-acquired pneumonia. *N Engl J Med* 1997; 336:243-250.
- Griffin M.R., Zhu Y., Moore M.R., et al.: U.S. hospitalizations for pneumonia after a decade of pneumococcal vaccination. *N Engl J Med* 2013; 369:155-163.
- Lim H.F., Phua J., Mukhopadhyay A., et al.: IDSA/ATS minor criteria aided pre-ICU resuscitation in severe community-acquired pneumonia. *Eur Respir J* 2014; 43:852-862.
- Maisel A., Neath S.X., Landsberg J., et al.: Use of procalcitonin for the diagnosis of pneumonia in patients presenting with a chief complaint of dyspnoea: results from the BACH (Biomarkers in Acute Heart Failure) trial. *Eur J Heart Fail* 2012; 14:278-286.
- Mandell L.A., Wunderink R.G., Anzueto A., et al.: Infectious Diseases Society of America/American Thoracic Society consensus guidelines on the management of community-acquired pneumonia in adults. *Clin Infect Dis* 2007; 44(Suppl. 2):S27-S72.
- Musher D.M., Rueda A.M., Kaka A.S., et al.: The association between pneumococcal pneumonia and acute cardiac events. *Clin Infect Dis* 2007; 45:158-165.
- Rahman N.M., Maskell N.A., West A., et al.: Intraleural use of tissue plasminogen activator and DNase in pleural infection. *N Engl J Med* 2011; 365:518-526.
- Rello J., Lisboa T., Lujan M., et al.: Severity of pneumococcal pneumonia associated with genomic bacterial load. *Chest* 2009; 136:832-840.
- Shindo Y., Ito R., Kobayashi D., et al.: Risk factors for drug-resistant pathogens in community-acquired and healthcare-associated pneumonia. *Am J Respir Crit Care Med* 2013; 188:985-995.

REFERENCES

- Murphy S.L., Xu J., Kochanek K.D.: Deaths: Preliminary data for 2010. *Nat Vital Stat Rep* 2012; 60(4):1-51.
- Angus D.C., Linde-Zwirble W.T., Lidicker J., et al.: Epidemiology of severe sepsis in the United States: analysis of incidence, outcome, and associated costs of care. *Crit Care Med* 2001; 29:1303-1310.
- Mitchell S.L., Teno J.M., Kiely D.K., et al.: The clinical course of advanced dementia. *N Engl J Med* 2009; 361:1529-1538.
- World Health Organization: The top 10 causes of death. Fact sheet No. 310 updated June 2011. Geneva: WHO. Available: www.who.int/mediacentre/factsheets/fs310/en/index.html.
- Pfuntner A., Wier L.M., Stocks C.: Most frequent conditions in U.S. hospitals, 2011: Statistical brief No. 162. Healthcare Cost and Utilization Project (HCUP) statistical briefs. Rockville, MD: Agency for Healthcare Research and Quality; 2013. Available: www.ncbi.nlm.nih.gov/pubmed/24228292.
- Angus D.C., Marrie T.J., Obrosky D.S., et al.: Severe community-acquired pneumonia: use of intensive care services and evaluation of American and British Thoracic Society Diagnostic criteria. *Am J Respir Crit Care Med* 2002; 166:717-723.
- Pfuntner A., Wier L.M., Steiner C.: Costs for hospital stays in the United States, 2011: Statistical brief No. 168. Healthcare Cost and Utilization Project (HCUP) statistical briefs. Rockville, MD: Agency for Healthcare Research and Quality; 2013. Available: www.ncbi.nlm.nih.gov/pubmed/24455786.
- Griffin M.R., Zhu Y., Moore M.R., et al.: U.S. hospitalizations for pneumonia after a decade of pneumococcal vaccination. *N Engl J Med* 2013; 369:155-163.
- Mandell L.A., Wunderink R.G., Anzueto A., et al.: Infectious Diseases Society of America/American Thoracic Society consensus guidelines on the management of community-acquired pneumonia in adults. *Clin Infect Dis* 2007; 44(Suppl. 2):S27-S72.
- Maisel A., Neath S.X., Landsberg J., et al.: Use of procalcitonin for the diagnosis of pneumonia in patients presenting with a chief complaint of dyspnea: results from the BACH (Biomarkers in Acute Heart Failure) trial. *Eur J Heart Fail* 2012; 14:278-286.
- Waterer G.W., Kessler L.A., Wunderink R.G.: Delayed administration of antibiotics and atypical presentation in community-acquired pneumonia. *Chest* 2006; 130:11-15.
- Albaum M.N., Hill L.C., Murphy M., et al.: Interobserver reliability of the chest radiograph in community-acquired pneumonia. *Chest* 1996; 110:343-350.
- Self W.H., Courtney D.M., McNaughton C.D., et al.: High discordance of chest X-ray and computed tomography for detection of pulmonary opacities in ED patients: implications for diagnosing pneumonia. *Am J Emerg Med* 2013; 31:401-405.
- Arancibia F., Ewig S., Martinez J.A., et al.: Antimicrobial treatment failures in patients with community-acquired pneumonia: causes and prognostic implications. *Am J Respir Crit Care Med* 2000; 162:154-160.
- Charlson E.S., Bittinger K., Haas A.R., et al.: Topographical continuity of bacterial populations in the healthy human respiratory tract. *Am J Respir Crit Care Med* 2011; 184:957-963.
- Erb-Downward J.R., Thompson D.L., Han M.K., et al.: Analysis of the lung microbiome in the 'healthy' smoker and in COPD. *PLoS ONE* 2011; 6:e16384.
- Rello J., Lisboa T., Lujan M., et al.: Severity of pneumococcal pneumonia associated with genomic bacterial load. *Chest* 2009; 136:832-840.
- Whitney C.G., Farley M.M., Hadler J., et al.: Decline in invasive pneumococcal disease after the introduction of protein-polysaccharide conjugate vaccine. *N Engl J Med* 2003; 348:1737-1746.
- Skattum L., van Deuren M., van der Poll T., et al.: Complement deficiency states and associated infections. *Mol Immunol* 2011; 48:1643-1655.
- Garcia-Laorden M.I., Sole-Violan J., Rodriguez de Castro F., et al.: Mannose-binding lectin and mannose-binding lectin-associated serine protease 2 in susceptibility, severity, and outcome of pneumonia in adults. *J Allergy Clin Immunol* 2008; 122:368-374, 74 e1-2.
- Waterer G.W., Wunderink R.G.: Genetic susceptibility to pneumonia. *Clin Chest Med* 2005; 26:29-38.
- Fine M.J., Auble T.E., Yealy D.M., et al.: A prediction rule to identify low-risk patients with community-acquired pneumonia. *N Engl J Med* 1997; 336:243-250.
- Marston B.J., Plouffe J.F., File T.M. Jr, et al.: Incidence of community-acquired pneumonia requiring hospitalization. Results of a population-based active surveillance study in Ohio. The Community-Based Pneumonia Incidence Study Group. *Arch Intern Med* 1997; 157(15):1709-1718.
- Chang D.C., Anderson S., Wannemuehler K., et al.: Testing for coccidioidomycosis among patients with community-acquired pneumonia. *Emerg Infect Dis* 2008; 14:1053-1059.
- American Thoracic Society, Infectious Diseases of America: Guidelines for the management of adults with hospital-acquired, ventilator-associated, and healthcare-associated pneumonia. *Am J Respir Crit Care Med* 2005; 171(4):388-416.
- Shindo Y., Ito R., Kobayashi D., et al.: Risk factors for drug-resistant pathogens in community-acquired and healthcare-associated pneumonia. *Am J Respir Crit Care Med* 2013; 188:985-995.
- Kollef M.H., Shorr A., Tabak Y.P., et al.: Epidemiology and outcomes of health-care-associated pneumonia: results from a large US database of culture-positive pneumonia. *Chest* 2005; 128:3854-3862.
- Micek S.T., Kollef K.E., Reichley R.M., et al.: Health care-associated pneumonia and community-acquired pneumonia: a single-center experience. *Antimicrob Agents Chemother* 2007; 51:3568-3573.
- Labelle A.J., Arnold H., Reichley R.M., et al.: A comparison of culture-positive and culture-negative health-care-associated pneumonia. *Chest* 2010; 137:1130-1137.
- Chalmers J.D., Taylor J.K., Singanayagam A., et al.: Epidemiology, antibiotic therapy, and clinical outcomes in health care-associated pneumonia: a UK cohort study. *Clin Infect Dis* 2011; 53:107-113.
- Attridge R.T., Frei C.R., Restrepo M.I., et al.: Guideline-concordant therapy and outcomes in healthcare-associated pneumonia. *Eur Respir J* 2011; 38:878-887.
- Gillet Y., Vanhems P., Lina G., et al.: Factors predicting mortality in necrotizing community-acquired pneumonia caused by *Staphylococcus aureus* containing Pantom-Valentine leukocidin. *Clin Infect Dis* 2007; 45:315-321.
- Scot N., Khanafar N., Meyssonier V., et al.: Methicillin resistance is not a predictor of severity in community-acquired *Staphylococcus aureus* necrotizing pneumonia – results of a prospective observational study. *Clin Microbiol Infect* 2013; 19:E142-E148.
- van der Eerden M.M., Vlaspolter F., de Graaff C.S., et al.: Comparison between pathogen directed antibiotic treatment and empirical broad spectrum antibiotic treatment in patients with community acquired pneumonia: a prospective randomised study. *Thorax* 2005; 60:672-678.
- Christ-Crain M., Stolz D., Bingisser R., et al.: Procalcitonin guidance of antibiotic therapy in community-acquired pneumonia: a randomized trial. *Am J Respir Crit Care Med* 2006; 174:84-93.
- Lim W.S., Baudouin S.V., George R.C., et al.: BTS guidelines for the management of community acquired pneumonia in adults: update 2009. *Thorax* 2009; 64(Suppl.3):iii1-iii55.
- Wiersinga W.J., Bonten M.J., Boersma W.G., et al.: SWAB/NVALT (Dutch Working Party on Antibiotic Policy and Dutch Association of Chest Physicians) guidelines on the management of community-acquired pneumonia in adults. *Neth J Med* 2012; 70:90-101.
- Postma D.F., van Werkhoven C.H., van Elden L., et al.: Antibiotic treatment strategies for community-acquired pneumonia in adults. *N Engl J Med* 2015; 372:1312-1323.
- Vanderkooi O.G., Low D.E., Green K., et al.: Predicting antimicrobial resistance in invasive pneumococcal infections. *Clin Infect Dis* 2005; 40:1288-1297.
- Wunderink R.G.: Community-acquired pneumonia versus healthcare-associated pneumonia: the returning pendulum. *Am J Respir Crit Care Med* 2013; 188:896-898.
- Capelastegui A., Espana P.P., Quintana J.M., et al.: Improvement of process-of-care and outcomes after implementing a guideline for the management of community-acquired pneumonia: a controlled before-and-after design study. *Clin Infect Dis* 2004; 39:955-963.
- Dean N.C., Bateman K.A., Donnelly S.M., et al.: Improved clinical outcomes with utilization of a community-acquired pneumonia guideline. *Chest* 2006; 130:794-799.
- Sligl W.I., Asadi L., Eurich D.T., et al.: Macrolides and mortality in critically ill patients with community-acquired pneumonia: a systematic review and meta-analysis. *Crit Care Med* 2014; 42:420-432.
- Metersky M.L., Ma A., Houck P.M., et al.: Antibiotics for bacteremic pneumonia: improved outcomes with macrolides but not fluoroquinolones. *Chest* 2007; 131:466-473.
- Wunderink R.G., Niederman M.S., Kollef M.H., et al.: Linezolid in methicillin-resistant *Staphylococcus aureus* nosocomial pneumonia: a randomized, controlled study. *Clin Infect Dis* 2012; 54:621-629.
- Kumar A., Roberts D., Wood K.E., et al.: Duration of hypotension before initiation of effective antimicrobial therapy is the critical determinant of survival in human septic shock. *Crit Care Med* 2006; 34:1589-1596.
- McGeer A., Green K.A., Plevneshi A., et al.: Antiviral therapy and outcomes of influenza requiring hospitalization in Ontario, Canada. *Clin Infect Dis* 2007; 45:1568-1575.
- Yealy D.M., Auble T.E., Stone R.A., et al.: Effect of increasing the intensity of implementing pneumonia guidelines: a randomized, controlled trial. *Ann Intern Med* 2005; 143:881-894.
- Lim H.F., Phua J., Mukhopadhyay A., et al.: IDSA/ATS minor criteria aided pre-ICU resuscitation in severe community-acquired pneumonia. *Eur Respir J* 2014; 43:852-862.
- Lim W.S., van der Eerden M.M., Laing R., et al.: Defining community acquired pneumonia severity on presentation to hospital: an international derivation and validation study. *Thorax* 2003; 58:377-382.
- Renaud B., Santin A., Coma E., et al.: Association between timing of intensive care unit admission and outcomes for emergency department patients with community-acquired pneumonia. *Crit Care Med* 2009; 37:2867-2874.
- Restrepo M.I., Mortensen E.M., Rello J., et al.: Late admission to the ICU in patients with community-acquired pneumonia is associated with higher mortality. *Chest* 2010; 137:552-557.
- Charles P.G., Wolfe R., Whitby M., et al.: SMART-COP: a tool for predicting the need for intensive respiratory or vasopressor support in community-acquired pneumonia. *Clin Infect Dis* 2008; 47:375-384.
- Renaud B., Labarere J., Coma E., et al.: Risk stratification of early admission to the intensive care unit of patients with no major criteria of severe community-acquired pneumonia: development of an international prediction rule. *Crit Care* 2009; 13:R54.
- Espana P.P., Capelastegui A., Gorordo I., et al.: Development and validation of a clinical prediction rule for severe community-acquired pneumonia. *Am J Respir Crit Care Med* 2006; 174:1249-1256.
- Rahman N.M., Maskell N.A., West A., et al.: Intrapleural use of tissue plasminogen activator and DNase in pleural infection. *N Engl J Med* 2011; 365:518-526.
- Mejvis S.C., Hardeman H., Remmelts H.H., et al.: Dexamethasone and length of hospital stay in patients with community-acquired pneumonia: a randomised, double-blind, placebo-controlled trial. *Lancet* 2011; 377:2023-2030.
- Brun-Buisson C., Richard J.C., Mercat A., et al.: Early corticosteroids in severe influenza A/H1N1 pneumonia and acute respiratory distress syndrome. *Am J Respir Crit Care Med* 2011; 183:1200-1206.
- Musher D.M., Rueda A.M., Kaka A.S., et al.: The association between pneumococcal pneumonia and acute cardiac events. *Clin Infect Dis* 2007; 45:158-165.
- Griffin M.R., Zhu Y., Moore M.R., et al.: Hospitalizations for pneumonia after a decade of pneumococcal vaccination. *N Engl J Med* 2013; 369:155-163.
- Ampofo K., Pavia A.T., Chris S., et al.: The changing epidemiology of invasive pneumococcal disease at a tertiary children's hospital through the 7-valent pneumococcal conjugate vaccine era: a case for continuous surveillance. *Pediatr Infect Dis J* 2012; 31:228-234.