

Original Article



Received: Mar 20, 2019

Revised: Jul 14, 2019

Accepted: Sep 4, 2019

Correspondence to



Jung-Kyu Han, MD, PhD

Division of Cardiology, Department of Internal Medicine and Cardiovascular Centre, Seoul National University Hospital, 101, Daehak-ro, Jongno-gu, Seoul 03080, Korea.
E-mail: hpcrates@gmail.com

Copyright © 2020. The Korean Society of Cardiology

This is an Open Access article distributed under the terms of the Creative Commons Attribution Non-Commercial License (<https://creativecommons.org/licenses/by-nc/4.0>) which permits unrestricted noncommercial use, distribution, and reproduction in any medium, provided the original work is properly cited.

ORCID iDs

Jeehoon Kang 
<https://orcid.org/0000-0002-9078-2231>
Jung-Kyu Han 
<https://orcid.org/0000-0002-0016-0747>
Do-Yoon Kang 
<https://orcid.org/0000-0002-6307-0562>
Chengbin Zheng 
<https://orcid.org/0000-0002-3793-2085>
Han-Mo Yang 
<https://orcid.org/0000-0002-1548-2351>
Kyung-Woo Park 
<https://orcid.org/0000-0003-2432-4432>
Hyun-Jae Kang 
<https://orcid.org/0000-0002-3500-1746>
Bon-Kwon Koo 
<https://orcid.org/0000-0002-8188-3348>

SYNTAX Score and SYNTAX Score II Can Predict the Clinical Outcomes of Patients with Left Main and/or 3-Vessel Disease Undergoing Percutaneous Coronary Intervention in the Contemporary Cobalt-Chromium Everolimus-Eluting Stent Era

Jeehoon Kang , MD, Jung-Kyu Han , MD, PhD, Do-Yoon Kang , MD, Chengbin Zheng , MD, Han-Mo Yang , MD, Kyung-Woo Park , MD, Hyun-Jae Kang , MD, Bon-Kwon Koo , MD, and Hyo-Soo Kim , MD

Division of Cardiology, Department of Internal Medicine and Cardiovascular Centre, Seoul National University Hospital, Seoul, Korea

ABSTRACT

Background and Objectives: The impact of SYnergy between percutaneous coronary intervention with TAXus and cardiac surgery score (SS) and SS II in patients who receive percutaneous coronary intervention with second-generation everolimus-eluting stents (EES) has not been fully validated.


Methods: The SS, SS II were calculated in 1,248 patients with left main and/or 3-vessel disease treated with EES. Patient-oriented composite endpoint (POCE; all-cause death, any myocardial infarction (MI), any revascularization) and target lesion failure (TLF: cardiac death, target-vessel MI, target lesion revascularization) were analyzed.

Results: The mean SS was 21.1±9.6. Three-year POCE increased according to the SS group (15.2% vs. 19.9% vs. 27.4% for low (≤22), intermediate (≥23, ≤32), high (≥33) SS groups, p<0.001). By multivariate Cox proportional hazard analysis, SS group was an independent predictor of 3-year POCE (hazard ratio, 1.324; 95% confidence interval, 1.095–1.601; p=0.004). The receiver operating characteristic curves revealed that the SS II was superior to the SS for 3-year POCE prediction (area under the curve [AUC]: 0.611 vs. 0.669 for SS vs. SS II, p=0.019), but not for 3-year TLF (AUC: 0.631 vs. 0.660 for SS vs. SS II, p=0.996). In subgroup analysis, SS II was superior to SS in patients with cardiovascular clinical risk factors, and in those presenting as stable angina.

Conclusions: The usefulness of SS and SS II was still valid in patients with left main and/or 3-vessel disease. SS II was superior to SS for the prediction of patient-oriented outcomes, but not for lesion-oriented outcomes.

Trial Registration: ClinicalTrials.gov Identifier: [NCT00698607](https://clinicaltrials.gov/ct2/show/study/NCT00698607)
[NCT01605721](https://clinicaltrials.gov/ct2/show/study/NCT01605721)

Keywords: Percutaneous coronary intervention; Drug-eluting stents

Hyo-Soo Kim 

<https://orcid.org/0000-0003-0847-5329>

Trial Registration

ClinicalTrials.gov Identifier: [NCT00698607](https://clinicaltrials.gov/ct2/show/study/NCT00698607)
[NCT01605721](https://clinicaltrials.gov/ct2/show/study/NCT01605721)

Funding

This work was supported by a grant of the Korea Health Technology R&D Project "Korea Research-Driven Hospital" through the Korea Health Industry Development Institute (KHIDI), funded by the Ministry of Health & Welfare, Republic of Korea (grant No. HI14C1277).

Conflict of Interest

The authors have no financial conflicts of interest.

Author Contributions

Conceptualization: Kang J, Kim HS; Data curation: Kang J; Formal analysis: Kang J, Kang DY, Zheng C, Park KW; Investigation: Park KW, Koo BK; Methodology: Kang J, Zheng C, Kang HJ; Resources: Yang HM; Supervision: Yang HM, Park KW, Koo BK, Kim HS; Validation: Kang HJ, Kim HS; Writing - original draft: Kang J; Writing - review & editing: Koo BK, Kim HS.

INTRODUCTION

Current guidelines recommend decision making based on the SYnergy between percutaneous coronary intervention with TAXus and cardiac surgery (SYNTAX) score (SS) for patients with left main and/or 3-vessel disease.^{1,2)} Five-year clinical outcomes from the SYNTAX trial showed that the major adverse cardiac and cerebrovascular events (MACCE) were similar between the percutaneous coronary intervention (PCI) arm and the coronary artery bypass graft (CABG) arm in patients with low/intermediate SS (0–32).^{3,4)} In contrast, MACCE was significantly higher after PCI than after CABG in patients with high scores (≥ 33). Recently, SS II was proposed to overcome the limitations of anatomical SS by incorporating clinical variables, such as age, sex, creatinine clearance, left ventricular (LV) ejection fraction, chronic obstructive pulmonary disease, and peripheral vascular disease. However, SYNTAX trials were performed with paclitaxel-eluting stent, which is not used any more. Contemporary second-generation drug-eluting stent (DES), especially cobalt-chromium everolimus-eluting stent (CoCr-EES), demonstrated better safety and efficacy outcomes.^{5–8)} CoCr-EES was suggested to have the best combination of efficacy and safety⁶⁾ and may be one of the most advanced contemporary DESs. SS systems, including SS and SS II have not been validated in CoCr-EES; thus, we are not confident that the current guidelines based on SS systems can be justified in the contemporary DES era. In this study, we aimed to test whether the anatomical SS and SS II in incorporating clinical factors could still effectively predict the outcomes of patients with left main and/or 3-vessel disease undergoing PCI with the contemporary CoCr-EES.

METHODS

Extended information of the Methods is presented in the **Supplementary Data**.

Study design and population

Patients were enrolled from multicentre prospective registries which are the Efficacy of Xience/promus versus Cypher in rEducing Late Loss after stENTing registry (NCT00698607) and Efficacy and Safety of Xience in Coronary artEry Disease aLL-comers After stENTing Using the PRIME Platform registry (NCT01605721). The study protocol was approved by the ethics committee at each participating centre, and was conducted according to the principles of the Declaration of Helsinki. All patients provided written, informed consent for participation in the registry. Clinical follow-up was performed upto 36 months after index PCI. All clinical events were reviewed by a clinical event committee whose members were unaware of the study purpose. Among patients enrolled in these registries, those with left main disease or 3-vessel disease who underwent CoCr-EES (Xience V, Promus, or Xience Prime) implantation were included in the current analysis.

Calculation of the SYnergy between percutaneous coronary intervention with TAXus and cardiac surgery score

For calculation of the SS, quantitative analysis of baseline coronary angiographic images was performed by 3 specialized QCA technicians at the Seoul National University Hospital Cardiovascular Clinical Research Centre Angiographic Core Laboratory. The core lab has been validated with SS calculation, showing measurement correlation above 95%.⁹⁾ Baseline SS was defined as the SS at initial coronary angiography. Based on the anatomical SS, the SS II was calculated as has been described in detail previously.¹⁰⁾ SS II was also calculated in the core laboratory, with scores assigned for the presence and magnitude of each predictor.

Study endpoints and definitions

The primary endpoint is the patient-oriented composite endpoint (POCE). POCE was defined as a composite of all-cause death, any myocardial infarction (MI; including non-target vessel territory), and any repeat revascularization (including all target and non-target vessels, regardless of percutaneous or surgical methods). Secondary endpoints were target lesion failure (TLF: a composite of cardiac death, target-vessel MI, and target lesion revascularization) and the individual components of the POCE. Extended description of the endpoint definitions is included in the **Supplementary Data**.

Statistical analyses

All variables and outcome analysis were based on SS and SS II. Data are presented as numbers and frequencies for categorical variables and as mean±standard deviation for continuous variables. For comparison among groups, χ^2 (or the Fisher exact test when any expected count was <5 for a 2×2 table) test for categorical variables and unpaired Student t-test or 1-way analysis of variance for continuous variables were applied. To estimate the independent effect of SS and SS II on clinical outcome, a multivariable Cox proportional hazards regression model using a stepwise algorithm was used. SS (or SS II) was entered both as a continuous variable (to analyze the independent incremental risk by each point) or as a strata (to analyze the independent incremental risk by strata) in 2 different models. The Kaplan-Meier event curves were drawn up to 36 months and the log rank test was used to analyse the significance in difference of clinical outcomes. Area under the curve (AUC) of receiver operating characteristic (ROC) curves for baseline SS and clinical SS were performed. To compare the discriminative ability of the baseline SS and SS II, and the net reclassification improvement (NRI) and integrated discrimination improvement (IDI) statistics were calculated.¹¹⁾ A 2-sided probability value less than 0.05 was considered statistically significant. Statistical tests were performed using SPSS, V20 (SPSS Inc., IBM Corp., Armonk, NY, USA) and R programming language, version 3.0.2 (R Foundation for Statistical Computing, Vienna, Austria).

RESULTS

SS in patients with left main and/or 3-vessel disease

A total of 1,248 patients with left main and/or 3-vessel disease were enrolled in the current analysis. Mean SS was 21.1±9.6, while 698 patients (55.9%) were treated with XienceV or Promus and 550 (44.1%) patients were treated with Xience Prime. Using the original cut off values defined as high, intermediate, and low SS,¹²⁾ the population was divided into 3 groups: low SS (SS≤22), 729 patients (58.4%); intermediate SS (23≤SS≤32), 362 patients (29.0%); and high SS (SS≥33), 157 patients (12.6%). Baseline characteristics of each group are shown in **Table 1**. Patients with higher SS were older and had a lower LV ejection fraction, whereas other clinical factors were similar between groups. Regarding lesion characteristics, left main and bifurcation lesions were more common in the high SS group. Stent numbers were higher, and the total stent length was longer in the high SS group. SS showed good calibration for 3-year POCE prediction ($R^2=0.949$, **Supplementary Figure 1**), and the rate of the 3-year POCE was significantly increased along with SS group, indicating that SS can still effectively predict the clinical outcomes in CoCr-EES era (15.2%, 111 patients; 19.9%, 72 patients; and 27.4%, 43 patients; $p<0.001$ for trend, in the low, intermediate, and high SS group, respectively; **Table 2**). Three-year TLF also showed a similar trend. The difference was mainly driven by all-cause death and any revascularization. Although statistically insignificant, MI rate numerically increased along with SS. A Kaplan-Meier analysis curve proved significant discrimination of the 3-year

Table 1. Baseline clinical and angiographic characteristics of patients according to baseline SS

	Total population	Low SS (729 patients)	Intermediate SS (362 patients)	High SS (157 patients)	p value
Age (years)	65.7±10.2	64.6±10.2	66.5±10.2	68.8±9.3	<0.001
Male (sex)	819 (65.6)	476 (65.3)	249 (68.8)	94 (59.9)	0.139
Body mass index (kg/m ²)	24.5±3.2	24.7±3.3	24.5±3.0	24.0±3.1	0.069
Diabetes	600 (48.1)	353 (48.4)	168 (46.4)	79 (50.3)	0.686
Hypertension	852 (68.3)	499 (68.4)	246 (68.0)	107 (68.2)	0.986
Dyslipidemia	468 (37.5)	272 (37.3)	137 (37.8)	59 (37.6)	0.985
Chronic renal failure	79 (6.3)	41 (5.6)	22 (6.1)	16 (10.2)	0.100
Peripheral vascular disease	38 (3.0)	19 (2.6)	14 (3.9)	5 (3.2)	0.518
Previous myocardial infarction	87 (7.0)	45 (6.2)	29 (8.0)	13 (8.3)	0.420
Previous PCI	209 (16.7)	131 (18.0)	53 (14.6)	25 (15.9)	0.366
Previous congestive heart failure	54 (4.3)	25 (3.4)	18 (5.0)	11 (7.0)	0.105
Previous CVA	165 (13.2)	104 (14.3)	37 (10.2)	24 (15.3)	0.128
Smoking status*	26.8/18.7/53.4	27.8/18.7/53.4	26.7/15.7/57.6	22.1/20.1/57.8	0.386
Current smoker	328 (26.8)	199 (27.8)	95 (26.7)	34 (22.1)	0.346
Family history of CAD	63 (6.7)	47 (6.4)	27 (7.5)	9 (5.7)	0.848
Clinical diagnosis [†]	39.2/40.6/20.2	40.7/42.2/17.1	37.3/39.0/23.7	36.5/37.2/26.3	0.089
Initial presentation as ACS	751 (60.2)	427 (58.6)	225 (62.2)	99 (63.1)	0.384
LV ejection fraction	57.5±11.7	59.2±10.9	56.5±11.7	52.7±13.2	<0.001
Angiographic findings					
Left main disease	287 (23.0)	154 (21.1)	85 (23.5)	48 (30.6)	0.037
Bifurcation	361 (28.9)	188 (25.8)	120 (33.1)	53 (33.8)	0.015
No. of treated vessels					<0.001
1 vessel treated	648 (51.9)	420 (57.6)	161 (44.5)	67 (42.7)	
2 vessels treated	471 (37.7)	259 (35.5)	149 (41.2)	63 (40.1)	
3 vessels treated	129 (10.3)	50 (6.9)	52 (14.4)	27 (17.2)	
No. of stents placed	2.1±1.1	1.9±0.9	2.4±1.2	2.6±1.4	<0.001
Total length of stents (mm)	52.3±31.7	44.5±24.4	61.2±35.4	67.7±40.6	<0.001
SS	21.1±9.6	14.5±5.2	27.1±2.8	38.0±4.9	<0.001
Residual SS	9.3±7.9	5.9±5.0	12.1±7.3	18.4±10.0	<0.001
Complete revascularization	178 (14.3)	157 (21.5)	19 (5.2)	2 (1.3)	<0.001

Data are shown as mean±standard deviation or number (%). Complete revascularization was defined as a residual SS of 0.

ACS = acute coronary syndrome; CAD = coronary artery disease; CVA = cerebrovascular accident; LV = left ventricular; PCI = percutaneous coronary intervention; SS = SYnergy between percutaneous coronary intervention with TAXus and cardiac surgery score.

*Smoking: current smokers/ex-smokers/never smokers; [†]Clinical diagnosis: stable angina/unstable angina/non-ST elevation myocardial infarction.

Table 2. Clinical outcomes according to SS strata

	Low SS (729 patients)	Intermediate SS (362 patients)	High SS (157 patients)	p value for trend
POCE*	111 (15.2)	72 (19.9)	43 (27.4)	<0.001
All cause death	49 (6.7)	38 (10.5)	19 (12.1)	0.008
Cardiac death	17 (2.3)	19 (5.2)	7 (4.4)	0.033
Revascularization	65 (8.9)	34 (9.4)	25 (15.9)	0.024
Target lesion revascularization	23 (3.2)	18 (5.0)	15 (9.6)	0.001
MI	12 (1.6)	7 (1.9)	5 (3.2)	0.244
Target vessel MI	4 (0.5)	4 (1.1)	2 (1.3)	0.246
TLF [†]	38 (5.2)	36 (9.9)	22 (14.0)	<0.001

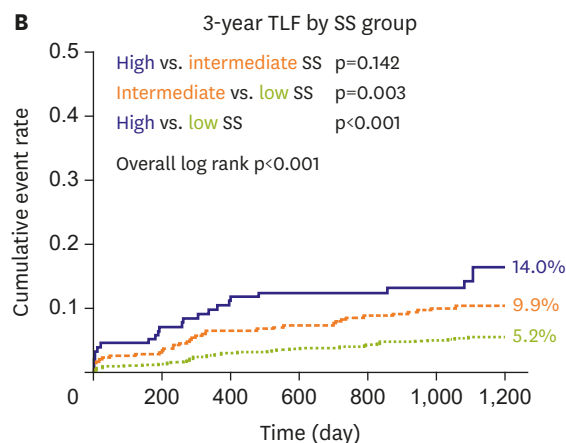
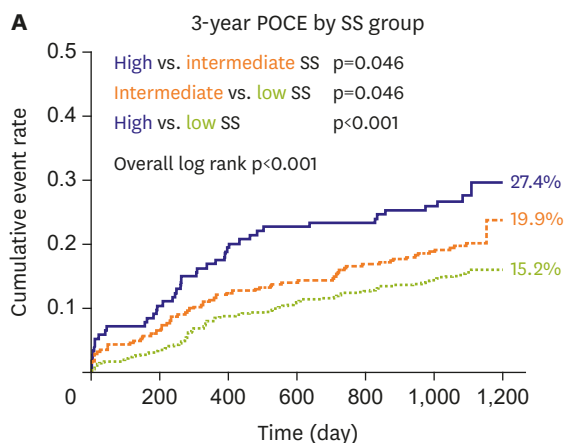
Values are presented as number (%).

MI = myocardial infarction; POCE = patient oriented composite endpoint; SS = SYnergy between percutaneous coronary intervention with TAXus and cardiac surgery score; TLF = target lesion failure.

*Including all cause death, all cause MI and revascularization; [†]Cardiac death, target vessel MI, target lesion revascularization.

POCE and 3-year TLF between SS groups (**Figure 1**). A multivariable Cox regression model revealed SS as an independent risk factor for 3-year POCE along with diabetes mellitus, chronic renal failure, and hypertension (**Table 3**).

— High SS 157 patients (12.6%)
 - - - Intermediate SS 362 patients (29.0%)
 Low SS 729 patients (58.4%)



No. at risk						
Low SS	729	702	662	644	628	609
Intermediate SS	362	339	317	310	299	290
High SS	157	140	126	121	119	113

No. at risk						
Low SS	729	709	687	672	659	644
Intermediate SS	362	343	328	321	313	305
High SS	157	142	132	128	128	121

Figure 1. Kaplan-Meier curve according to SS, for (A) 3-year POCE, and (B) 3-year TLF. 3-year POCE and 3-year TLF increased along with SS, in the low-, intermediate-, and high SS group (low SS, SS<23; intermediate SS, 23≤SS<32; high SS, SS>32). POCE = patient-oriented composite endpoint; SS = SYnergy between percutaneous coronary intervention with TAXus and cardiac surgery score; TLF = target lesion failure.

Table 3. Independent predictors of 3-year POCE*

Factor	HR (95% CI)	p value
Diabetes mellitus	1.612 (1.070–2.427)	0.022
Chronic renal failure	3.139 (1.685–5.848)	<0.001
Hypertension	2.333 (1.344–4.049)	0.003
SS	1.046 (1.025–1.067) per point	<0.001
	1.666 (1.283–2.164) per strata	<0.001
Intermediate vs. low SS	1.650 (1.034–2.631)	0.036
High vs. low SS	2.783 (1.637–4.733)	<0.001

SS was entered both as a continuous variable (to analyze the effect of each point) or as a strata (to analyze the independent incremental risk by strata) in 2 different models. The HR of variables other than SS was calculated from the model that included SS as a continuous variable.

CI = confidence interval; HR = hazard ratio; POCE = patient oriented composite endpoint; SS = SYnergy between percutaneous coronary intervention with TAXus and cardiac surgery score.

*Including all cause death, all cause myocardial infarction and revascularization.

Comparison of the predictive power between baseline SS and SS II

Subsequently, we calculated SS II in our study population and compared its predictive power with that of SS. SS II was available in 1,120 patients and varied from 11.0 to 78.2 (median 34.2, interquartile range: 27.1, 42.8). SS II showed good calibration for POCE prediction in our study population ($R^2=0.977$, **Supplementary Figure 2**). With regard to the predictive power for 3-year POCE, SS II was superior to SS (AUC for 3-year POCE: 0.611 vs. 0.669 for SS vs. SS II, $p=0.019$). However, SS II had no additive value in predicting 3-year TLF compared with SS (AUC for 3-year TLF: 0.661 vs. 0.661 for SS vs. SS II, $p=0.996$; **Figure 2, Supplementary Table 1**). SS II showed markedly enhanced predictability for all-cause mortality rather than for non-target lesion related cardiac events (non-toll-like receptor, non-target vessel MI) compared with SS (**Supplementary Figure 3**). It demonstrated that all-cause mortality was a major factor determining the difference of predictability between SS II and SS. Regarding left main and/or

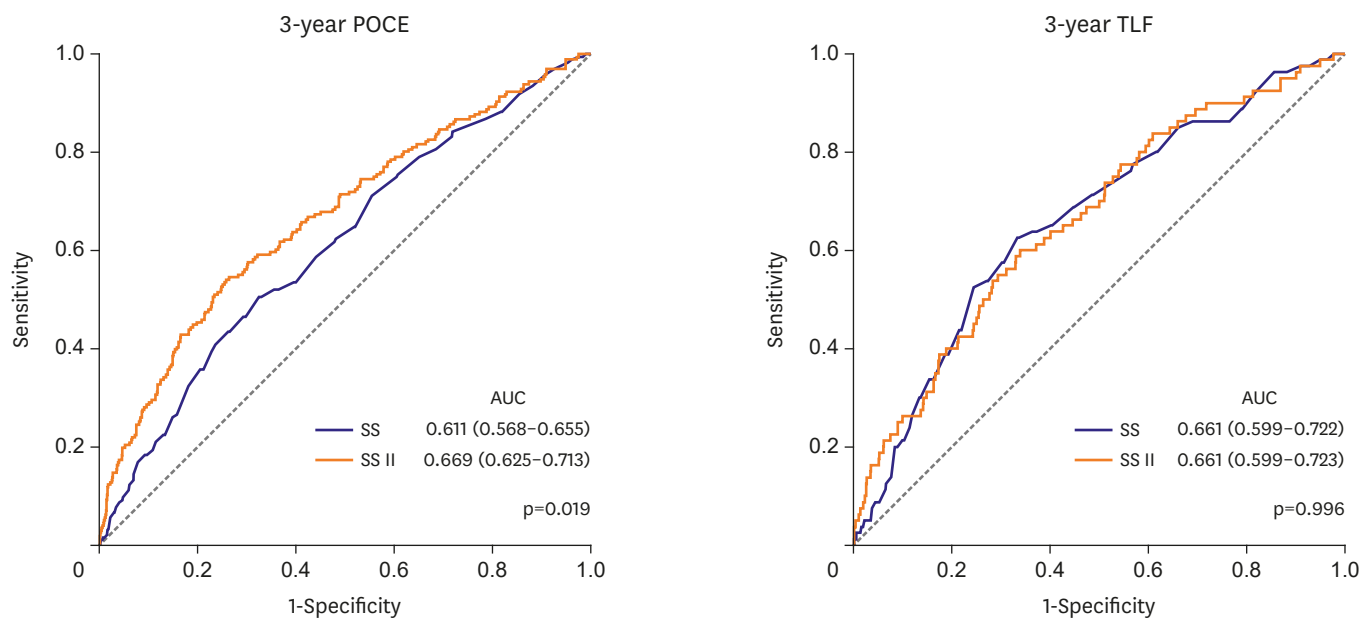


Figure 2. Comparison of the SS and SS II. By the AUC of the receiver operating characteristic curve, SS II was superior to SS for predicting 3-year POCE, but equivocal for predicting 3-year TLF. AUC = area under the curve; POCE = patient-oriented composite endpoint; SS = SYnergy between percutaneous coronary intervention with TAXus and cardiac surgery score; TLF = target lesion failure.

3-vessel coronary artery disease subsets, SS II had a higher predictive value compared with SS for 3-year POCE, both in patients with left main disease (AUC for 3-year POCE: 0.598 vs. 0.652 for SS vs. SS II, p=0.031) and 3-vessel disease (AUC for 3-year POCE: 0.601 vs. 0.658 for SS vs. SS II, p=0.028). The predictive values of various scoring systems (i.e., SS, residual SS, EuroSCORE, Society of Thoracic Surgery risk score, Mayo Clinic risk score for PCI, age, creatinine, ejection fraction (ACEF) score, and the modified ACEF score) were additionally compared (**Supplementary Figure 4, Supplementary Table 2**). The results showed that SS II had numerically the largest AUC for 3-year POCE and 3-year TLF.

The population was divided into 3 strata according to SS II: low SS II (SS II<30), 388 patients (34.3%); intermediate SS II (30≤SS II≤40), 377 patients (33.3%); high SS II (SS II>40), 367 patients (29.4%). All clinical events increased along with SS II strata as in **Table 4**, and the survival curve showed fair discrimination by SS II strata (**Figure 3**). A multivariable Cox

Table 4. Clinical outcomes according to SS II strata

	Low SS II (391 patients)	Intermediate SS II (377 patients)	High SS II (364 patients)	p value
POCE*	42 (10.7)	50 (13.3)	111 (30.5)	<0.001
All cause death	12 (3.1)	16 (4.2)	69 (19.0)	<0.001
Cardiac death	5 (1.3)	7 (1.9)	27 (7.4)	<0.001
Revascularization	31 (7.9)	34 (9.0)	47 (12.9)	0.023
Target lesion revascularization	10 (2.6)	16 (4.2)	22 (6.0)	0.018
MI	4 (1.0)	3 (0.8)	13 (3.6)	0.009
Target vessel MI	1 (0.3)	2 (0.5)	5 (1.4)	0.069
TLF†	14 (3.6)	23 (6.1)	47 (12.9)	<0.001

Values are presented as number (%).

MI = myocardial infarction; POCE = patient oriented composite endpoint; SS = SYnergy between percutaneous coronary intervention with TAXus and cardiac surgery score; TLF = target lesion failure.

*Including all cause death, all cause MI and revascularization; †Including cardiac death, target-vessel MI, and target lesion revascularization.

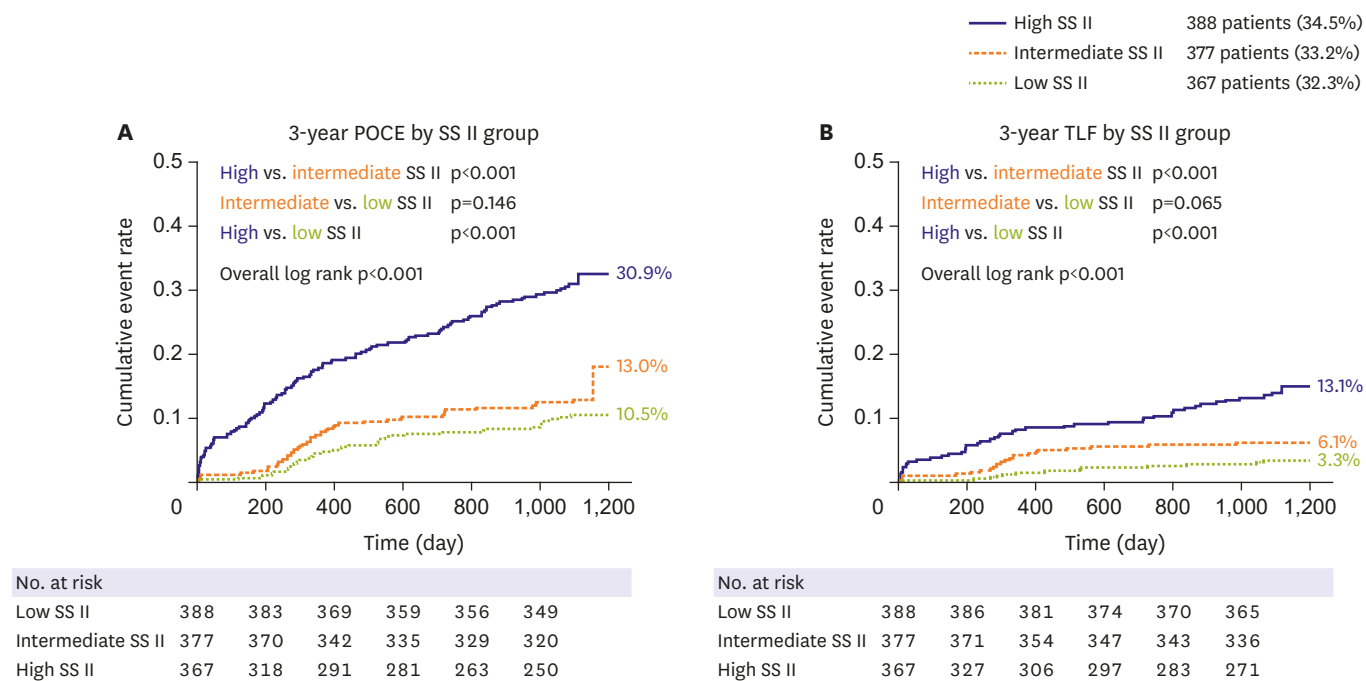


Figure 3. Kaplan-Meier curve according to SS II strata, for (A) 3-year POCE, and (B) 3-year TLF. 3-year POCE and 3-year TLF increased along with SS II, in the low-, intermediate-, and high SS II group (low SS II, $SS II < 30$; intermediate SS II, $30 \leq SS II \leq 40$; high SS II, $SS II > 40$). POCE = patient-oriented composite endpoint; SS = SYnergy between percutaneous coronary intervention with TAXus and cardiac surgery score; TLF = target lesion failure.

regression model revealed SS II as an independent predictor of 3-year POCE with an HR of 1.758 per strata (95% CI, 1.430–2.162; $p < 0.001$; **Supplementary Table 3**). In addition, NRI and IDI analysis showed that SS II had better prognostic value for 3-year POCE compared with SS (NRI: $p = 0.020$; IDI: $p = 0.050$) but had similar prognostic value for 3-year TLF (NRI: $p = 0.697$; IDI: $p = 0.517$).

Subgroup analysis in patients with various cardiovascular risk factors

For subgroup analysis, the total population was divided according to the presence of cardiovascular risk factors (i.e. sex, old age $> [60$ years old], low body mass index [BMI; ≤ 25 kg/m²], hypertension, diabetes mellitus, chronic renal failure, depressed LV systolic function (LV ejection fraction $< 50\%$), or presentation as acute coronary syndrome [ACS]). The predictive power of SS and SS II were compared using the ROC curve. As shown in **Table 5**, SS II had an improved predictive value than SS for 3-year POCE in patients with risk factors, such as male sex, old age, low BMI, hypertension, diabetes mellitus, chronic renal failure, and depressed LV systolic function. The delta AUC value ('AUC of SS II' minus 'AUC of SS') was relatively large with significant difference of AUC between SS and SS II. In contrast, SS showed better predictive power for patients who presented with stable angina, not ACS. Additionally, we divided the total population into tertiles according to the numbers of predefined risk factors; low-risk group (1–3 risk factors): 406 patients (32.5%), mid-risk group (4 risk factors): 340 patients (30.7%), high-risk group (5–8 risk factors): 363 patients (32.7%). For 3-year POCE, the predictive value for SS was comparable with SS II in the low and mid risk group, while SS II was superior in the high-risk group. For 3-year TLF, the SS and SS II had a comparable predictive value throughout all risk groups (**Supplementary Figure 5**).

Table 5. Comparison of SS and SS II for 3-year POCE* according to the presence of clinical risk factors

Risk factor	SS [†]	SS II [†]	Δ [‡]	p value	IDI	NRI
Old age (>60 years old)						
Risk factor (+)	0.602	0.680	0.078	0.008	0.058 (0.031, 0.096), p<0.001	0.195 (0.088, 0.294), p<0.001
Risk factor (-)	0.624	0.658	0.034	0.401	0.036 (0.005, 0.099), p=0.010	0.135 (-0.046, 0.276), p=0.119
Male (sex)						
Risk factor (+)	0.610	0.705	0.095	<0.001	0.092 (0.051, 0.147), p<0.001	0.267 (0.153, 0.342), p<0.001
Risk factor (-)	0.608	0.606	-0.002	0.964	0.015 (-0.001, 0.062), p=0.090	0.090 (-0.170, 0.228), p=0.378
Low body mass index (≤25 kg/m ²)						
Risk factor (+)	0.609	0.670	0.061	0.049	0.040 (0.009, 0.095), p<0.001	0.127 (0.033, 0.265), p=0.010
Risk factor (-)	0.594	0.632	0.038	0.394	0.038 (0.005, 0.100), p<0.001	0.127 (-0.003, 0.258), p=0.060
Hypertension						
Risk factor (+)	0.612	0.682	0.070	0.019	0.048 (0.018, 0.099), p<0.001	0.145 (0.072, 0.246), p<0.001
Risk factor (-)	0.615	0.601	-0.014	0.926	0.031 (0.001, 0.108), p=0.010	0.070 (-0.090, 0.232), p=0.418
Diabetes mellitus						
Risk factor (+)	0.608	0.674	0.066	0.047	0.052 (0.017, 0.095), p<0.001	0.121 (0.000, 0.244), p=0.050
Risk factor (-)	0.620	0.639	0.019	0.591	0.034 (0.004, 0.111), p<0.001	0.117 (-0.029, 0.271), p=0.129
Chronic renal failure						
Risk factor (+)	0.553	0.700	0.147	0.048	0.124 (0.001, 0.243), p=0.030	0.261 (0.041, 0.563), p=0.020
Risk factor (-)	0.616	0.634	0.018	0.463	0.022 (0.006, 0.051), p=0.001	0.094 (0.000, 0.184), p=0.050
Low ejection fraction (<50%)						
Risk factor (+)	0.579	0.678	0.099	0.039	0.074 (0.013, 0.152), p=0.010	0.324 (0.069, 0.463), p<0.001
Risk factor (-)	0.607	0.655	0.048	0.113	0.038 (0.014, 0.081), p<0.001	0.146 (0.075, 0.252), p<0.001
Presentation as acute coronary syndrome						
Risk factor (+)	0.608	0.639	0.031	0.335	0.032 (0.009, 0.072), p<0.001	0.101 (0.018, 0.203), p<0.001
Risk factor (-)	0.616	0.718	0.102	0.006	0.085 (0.037, 0.150), p<0.001	0.244 (0.097, 0.370), p<0.001

AUC = area under the curve; IDI = integrated discrimination index; NRI = net reclassification index; POCE = patient oriented composite endpoint; SS = SYNERGY between percutaneous coronary intervention with TAXUS and cardiac surgery score.

*Including all cause death, all cause myocardial infarction and revascularization; †Area under the ROC curve (AUC); ‡Δ: (AUC of SS II) minus (AUC of SS).

DISCUSSION

In this study, SS and SS II were assessed in patients with left main and/or 3-vessel disease who underwent PCI with the contemporary CoCr-EES from 2 large all-comer registries. The main findings were that: 1) SS was an independent predictor of 3-year POCE, 2) SS II held a substantially improved predictive power for 3-year POCE, but not for TLF, and 3) in a subgroup analysis, SS II showed particularly better predictive accuracy compared with SS, for 3-year POCE in patients with clinical cardiovascular risk factors or in patients presenting with stable angina.

The SS was developed based on the population of patients with left main and/or 3-vessel disease who underwent paclitaxel-eluting stent implantation.¹²⁾ Based on the long-term follow-up results of the validation study,¹³⁾ the SS is regarded as a useful tool to select the appropriate method of revascularization: PCI versus surgery.¹⁴⁾ Furthermore, various studies have shown that the SS can be used as a risk stratification tool for patients with coronary artery disease who received PCI.¹⁵⁾¹⁶⁾ However, the critical weak point of SS system is that the SYNTAX trial was performed about a decade earlier. It is a study of the first-generation DES era when the DES performance was not as good as that of contemporary DESs and when intravascular imaging and fractional flow reserve were not frequently adopted. Moreover, adjunctive medical therapy, such as dual antiplatelet agents and statin was not thoroughly used. In this regard, re-validation of SS system is needed before applying SS to the current clinical practice. In addition, various scoring systems were derived from the SS so as to improve the predictability for the original SS.¹⁷⁾¹⁸⁾ However, previous scores were derived from old generation stents, which was known to be inferior to current generation DESs. Especially, the SS II was recently proposed to overcome the intrinsic limitations of the SS which solely relied on anatomical

factors. By adding clinical factors of a patient, SS II was intended to enhance the predictive value. This scoring system was also developed based on the SYNTAX trial, and validated on the Drug Eluting stent for Left main coronary Artery disease registry of the first-generation DES era.¹⁹⁾ Thus, SS II also needs re-validation in contemporary patient population.

A few studies have assessed the predictive values of SS¹⁵⁾¹⁸⁾ and SS II for long-term clinical outcomes in a PCI population.²⁰⁻²²⁾ However, these studies included patients who received 1st generation DESs, and were not limited to patients with left main and/or 3-vessel disease in whom the use of SS was intended in the original SYNTAX study³⁾ and indicated by current guidelines.¹²⁾ In addition, regarding the comparison of SS and SSII, Song et al. recently compared the predictive value of SS and SS II for 2-year mortality in patients with left main and/or 3-vessel disease undergoing PCI.²³⁾ In this single-center study, about 10% of study population did not receive 2nd generation DESs, and SS and SS II were quite low (SS: 16.0±8.2 compared with 21.1±9.6 in our study, SS II: 23.6±6.5 compared with 35.5±11.3 in our study). Furthermore, the mortality rate in this study was very low (1.3%, compared with 8.5% in our study), suggesting that this study included a very low-risk population that might not represent well the population that needs the calculation of SS or SS II. Collectively, previous studies did not thoroughly validate SS and SS II in a contemporary 2nd generation DES era. Therefore, the main purpose of our study was to validate the SS and SS II in a pure contemporary CoCr-EES population with left main and/or 3-vessel disease in a 3-year follow-up duration, which is the main difference between previous evidences and the current study. Through our analysis of more than 1,200 patients, we demonstrated the predictive value of both SS and SS II in the contemporary DES era. Interestingly, the predictive value of SS II was superior compared to SS for patient oriented clinical outcomes, while both values were comparable for lesion specific outcomes. This finding is reasonable because firstly, SS II was initially developed to predict all-cause mortality which was the ultimate patient-orient outcome, and secondly, SS II includes clinical variables in contrast to SS which only take anatomical variables of lesions into account. In fact, we found the superior predictive value of SS II especially for all-cause mortality.

Despite the improvement in the predictive performance of SS II, it may not have well penetrated into the daily practice. This situation is attributed to the 7 additional factors included in SS II that requires utilization of a complex nomogram or web-based calculator. Thus, to reveal the situations when SS II is superior to the SS is practically useful. Our study showed that SS II was superior in predicting patient-related outcomes, but had no additive value in predicting lesion-related outcomes. This means that an anatomical scoring system, such as SS may be sufficient to predict outcomes of the lesion. However, to predict outcomes of a patient, incorporating clinical variables are superior.

In addition, SS II was particularly useful to predict the clinical outcomes in patients with cardiovascular risk factors, such as male sex, old age, low BMI, hypertension, diabetes mellitus, chronic renal failure, and depressed LV systolic function. We think that this was a reasonable result, because combining more risk factors usually improves predictive values. Interestingly, regarding the clinical presentation, the additive value of SS II was limited in ACS patients; SS II was superior to SS only in patients presenting as stable angina. This may be explained by the importance of the coronary anatomy in ACS patients. ACS patients are more likely to have more significant stenosis which threatens the myocardial viability by decreased coronary flow. In these patients, relieving angiographic stenosis through PCI may have a larger effect on clinical outcomes. On the contrary, for patients with stable angina,

medical treatment for clinical factors may have a larger portion to determine the clinical outcomes. Considering that the SYNTAX score II incorporates clinical risk factors to the anatomical risk factors, this may explain the observed better predictive value of SS II in patients with stable angina.

Our registries only included the patients undergoing PCI; hence, we could not provide the comparison between contemporary DES and CABG according to SS and SS II. In addition, our study patients were implanted with only CoCr-EES among the various contemporary DESs. However, CoCr-EES is regarded as the most advanced contemporary DESs. Thus, we believe that our study well represents the current status of the DES use. Also, according to current guidelines, CABG is preferred to those with a high SS. It should be noticed that the reason these patients were unsuitable for CABG might act as a factor of worst outcome. This can be addressed as a selection bias, that should be considered in interpretation of our results.

In conclusions, the usefulness of SS and SS II could be extended to patients with left main and/or 3-vessel disease who received PCI with CoCr-EES. SS II was superior to SS in predicting patient-oriented outcomes, particularly in patients with clinical cardiovascular risk factors or patients without ACS.

SUPPLEMENTARY MATERIALS

Supplementary Data

Supplementary analysis data

[Click here to view](#)

Supplementary Table 1

AUC of receiver operating characteristic curves for 3-year clinical outcomes

[Click here to view](#)

Supplementary Table 2

Comparison of the predictive value between SS II and other risk scores

[Click here to view](#)

Supplementary Table 3

Independent predictors of 3-year POCE* that included SS II in the analysis

[Click here to view](#)

Supplementary Figure 1

Calibration plot of the SS. Calibration plot of the predicted probability versus the observed probability of POCE by the SS.

[Click here to view](#)

Supplementary Figure 2

Calibration plot of the SS II. Calibration plot of the predicted probability versus the observed probability of POCE by the SS II.

[Click here to view](#)

Supplementary Figure 3

Receiver operating characteristic analysis of 3-year all-cause mortality and non-target lesion related cardiac events (non-TLR, non-TVMI) for risk scores.

[Click here to view](#)

Supplementary Figure 4

Receiver operating characteristic analysis of 3-year clinical outcomes for risk scores.

[Click here to view](#)

Supplementary Figure 5

Receiver operating characteristic analysis of 3-year POCE and TLF according to the number of predefined cardiovascular risk factors. Predefined cardiovascular risk factors included old age (>60 years old), male sex, low body mass index (≤ 25 kg/m²), hypertension, diabetes mellitus, chronic renal failure, low ejection fraction (<50%), and presentation as acute coronary syndrome. Patients were divided the population into 3 group; low-risk group (1–3 risk factors): 406 patients (32.5%), mid-risk group (4 risk factors): 340 patients (30.7%), high-risk group (5–8 risk factors): 363 patients (32.7%).

[Click here to view](#)

REFERENCES

1. Kolh P, Windecker S. ESC/EACTS myocardial revascularization guidelines 2014. *Eur Heart J* 2014;35:3235-6.
[PUBMED](#) | [CROSSREF](#)
2. Amsterdam EA, Wenger NK, Brindis RG, et al. 2014 AHA/ACC guideline for the management of patients with non-ST-elevation acute coronary syndromes: a report of the American College of Cardiology/American Heart Association task force on practice guidelines. *J Am Coll Cardiol* 2014;64:e139-228.
[PUBMED](#) | [CROSSREF](#)
3. Morice MC, Serruys PW, Kappetein AP, et al. Five-year outcomes in patients with left main disease treated with either percutaneous coronary intervention or coronary artery bypass grafting in the synergy between percutaneous coronary intervention with taxus and cardiac surgery trial. *Circulation* 2014;129:2388-94.
[PUBMED](#) | [CROSSREF](#)
4. Head SJ, Davierwala PM, Serruys PW, et al. Coronary artery bypass grafting vs. percutaneous coronary intervention for patients with three-vessel disease: final five-year follow-up of the SYNTAX trial. *Eur Heart J* 2014;35:2821-30.
[PUBMED](#) | [CROSSREF](#)
5. Kang SH, Park KW, Kang DY, et al. Biodegradable-polymer drug-eluting stents vs. bare metal stents vs. durable-polymer drug-eluting stents: a systematic review and Bayesian approach network meta-analysis. *Eur Heart J* 2014;35:1147-58.
[PUBMED](#) | [CROSSREF](#)
6. Bangalore S, Toklu B, Amoroso N, et al. Bare metal stents, durable polymer drug eluting stents, and biodegradable polymer drug eluting stents for coronary artery disease: mixed treatment comparison meta-analysis. *BMJ* 2013;347:f6625.
[PUBMED](#) | [CROSSREF](#)

7. Navarese EP, Tandjung K, Claessen B, et al. Safety and efficacy outcomes of first and second generation durable polymer drug eluting stents and biodegradable polymer biolimus eluting stents in clinical practice: comprehensive network meta-analysis. *BMJ* 2013;347:f6530.
[PUBMED](#) | [CROSSREF](#)
8. Palmerini T, Biondi-Zoccai G, Della Riva D, et al. Clinical outcomes with bioabsorbable polymer- versus durable polymer-based drug-eluting and bare-metal stents: evidence from a comprehensive network meta-analysis. *J Am Coll Cardiol* 2014;63:299-307.
[PUBMED](#) | [CROSSREF](#)
9. Kang J, Park KW, Han JK, et al. Usefulness of the baseline syntax score to predict 3-year outcome after complete revascularization by percutaneous coronary intervention. *Am J Cardiol* 2016;118:641-6.
[PUBMED](#) | [CROSSREF](#)
10. Farooq V, van Klaveren D, Steyerberg EW, et al. Anatomical and clinical characteristics to guide decision making between coronary artery bypass surgery and percutaneous coronary intervention for individual patients: development and validation of SYNTAX score II. *Lancet* 2013;381:639-50.
[PUBMED](#) | [CROSSREF](#)
11. Pencina MJ, D'Agostino RB Sr, D'Agostino RB Jr, Vasan RS. Evaluating the added predictive ability of a new marker: from area under the ROC curve to reclassification and beyond. *Stat Med* 2008;27:157-72.
[PUBMED](#) | [CROSSREF](#)
12. Serruys PW, Morice MC, Kappetein AP, et al. Percutaneous coronary intervention versus coronary-artery bypass grafting for severe coronary artery disease. *N Engl J Med* 2009;360:961-72.
[PUBMED](#) | [CROSSREF](#)
13. Mohr FW, Morice MC, Kappetein AP, et al. Coronary artery bypass graft surgery versus percutaneous coronary intervention in patients with three-vessel disease and left main coronary disease: 5-year follow-up of the randomised, clinical SYNTAX trial. *Lancet* 2013;381:629-38.
[PUBMED](#) | [CROSSREF](#)
14. Hillis LD, Smith PK, Anderson JL, et al. 2011 ACCF/AHA guideline for coronary artery bypass graft surgery. A report of the American College of Cardiology Foundation/American Heart Association task force on practice guidelines. Developed in collaboration with the American Association for Thoracic Surgery, Society of Cardiovascular Anesthesiologists, and Society of Thoracic Surgeons. *J Am Coll Cardiol* 2011;58:e123-210.
[PUBMED](#) | [CROSSREF](#)
15. Park KW, Kang J, Kang SH, et al. Usefulness of the SYNTAX and clinical SYNTAX scores in predicting clinical outcome after unrestricted use of sirolimus- and everolimus-eluting stents. *Circ J* 2013;77:2912-21.
[PUBMED](#) | [CROSSREF](#)
16. Park KW, Kang J, Kang SH, et al. The impact of residual coronary lesions on clinical outcomes after percutaneous coronary intervention: residual SYNTAX score after percutaneous coronary intervention in patients from the Efficacy of Xience/Promus versus Cypher in rEDucing Late Loss after stENTing (EXCELLENT) registry. *Am Heart J* 2014;167:384-392.e5.
[PUBMED](#) | [CROSSREF](#)
17. Garg S, Sarno G, Garcia-Garcia HM, et al. A new tool for the risk stratification of patients with complex coronary artery disease: the clinical SYNTAX score. *Circ Cardiovasc Interv* 2010;3:317-26.
[PUBMED](#) | [CROSSREF](#)
18. Nam CW, Mangiacapra F, Entjes R, et al. Functional SYNTAX score for risk assessment in multivessel coronary artery disease. *J Am Coll Cardiol* 2011;58:1211-8.
[PUBMED](#) | [CROSSREF](#)
19. Chieffo A, Meliga E, Latib A, et al. Drug-eluting stent for left main coronary artery disease. The DELTA registry: a multicenter registry evaluating percutaneous coronary intervention versus coronary artery bypass grafting for left main treatment. *JACC Cardiovasc Interv* 2012;5:718-27.
[PUBMED](#) | [CROSSREF](#)
20. Xu B, Généreux P, Yang Y, et al. Validation and comparison of the long-term prognostic capability of the SYNTAX score-II among 1,528 consecutive patients who underwent left main percutaneous coronary intervention. *JACC Cardiovasc Interv* 2014;7:1128-37.
[PUBMED](#) | [CROSSREF](#)
21. He J, Zhao H, Yu X, et al. SYNTAX score-II predicts long-term mortality in patients who underwent left main percutaneous coronary intervention treated with second-generation drug-eluting stents. *Int Heart J* 2017;58:344-50.
[PUBMED](#) | [CROSSREF](#)

22. Cavalcante R, Sotomi Y, Mancone M, et al. Impact of the SYNTAX scores I and II in patients with diabetes and multivessel coronary disease: a pooled analysis of patient level data from the SYNTAX, PRECOMBAT, and BEST trials. *Eur Heart J* 2017;38:1969-77.
[PUBMED](#) | [CROSSREF](#)
23. Song Y, Gao Z, Tang X, et al. Usefulness of the SYNTAX score II to validate 2-year outcomes in patients with complex coronary artery disease undergoing percutaneous coronary intervention: a large single-center study. *Catheter Cardiovasc Interv* 2018;92:40-7.
[PUBMED](#) | [CROSSREF](#)