

CORRECTION

Correction: Africa's Oesophageal Cancer Corridor: Geographic Variations in Incidence Correlate with Certain Micronutrient Deficiencies

Torin Schaafsma, Jon Wakefield, Rachel Hanisch, Freddie Bray, Joachim Schüz, Edward J. M. Joy, Michael J. Watts, Valerie McCormack

[Fig 2](#) is incorrect. The authors have provided a corrected version here.



OPEN ACCESS

Citation: Schaafsma T, Wakefield J, Hanisch R, Bray F, Schüz J, Joy EJM, et al. (2015) Correction: Africa's Oesophageal Cancer Corridor: Geographic Variations in Incidence Correlate with Certain Micronutrient Deficiencies. PLoS ONE 10(11): e0142648. doi:10.1371/journal.pone.0142648

Published: November 13, 2015

Copyright: © 2015 Schaafsma et al. This is an open access article distributed under the terms of the [Creative Commons Attribution License](#), which permits unrestricted use, distribution, and reproduction in any medium, provided the original author and source are credited.

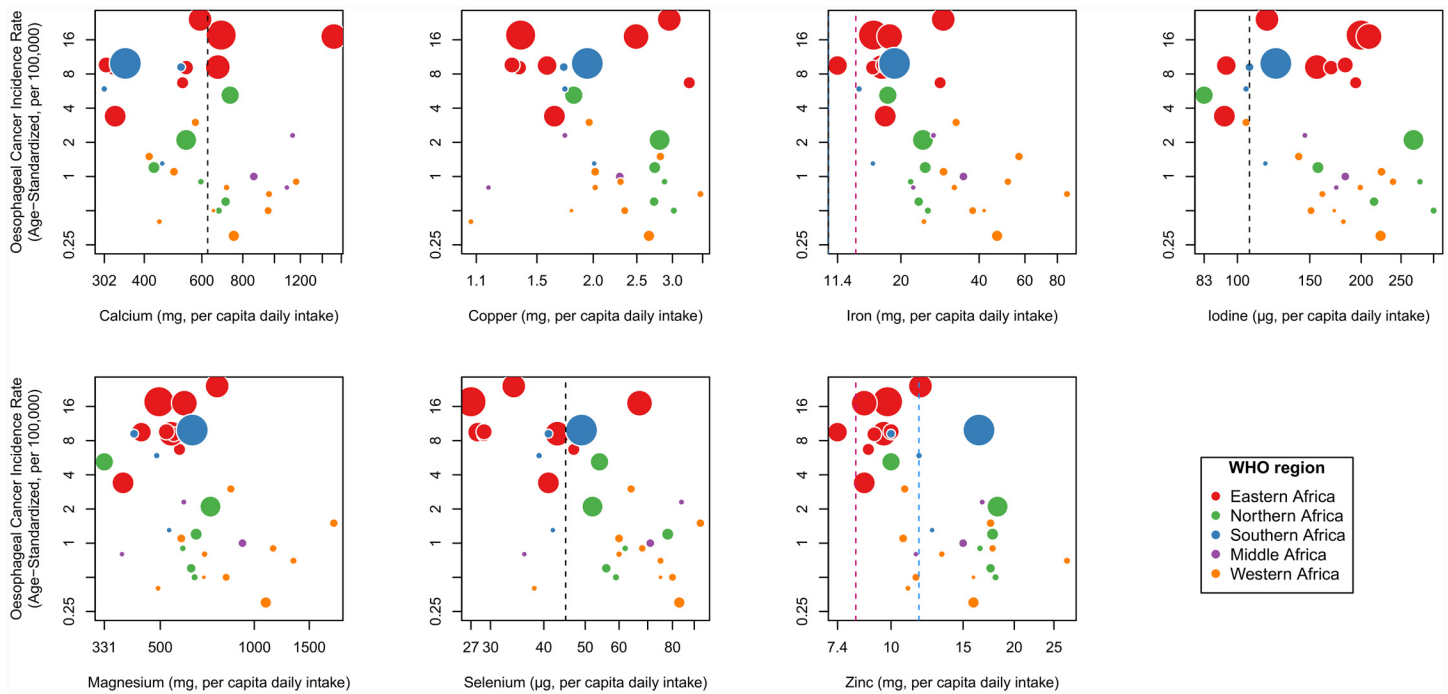


Fig 2. Scatterplots of country-specific oesophageal cancer incidence rates vs mean micronutrient intake per capita. A country's EC incidence rates are for both sexes combined and are age-standardized to the world standard population. Both axes are plotted on logarithmic scales. Vertical dashed lines indicate estimated average requirements (EAR) in adults: male EARs (blue), female EARs (pink) and non sex-specific EARs (black). For Cu and Mg, and, in men, Fe, EARs lines are suppressed as they are below the mean levels in every country. Circle sizes are proportional to the square root of the total number of EC cases for each country.

doi:10.1371/journal.pone.0142648.g001

Reference

1. Schaafsma T, Wakefield J, Hanisch R, Bray F, Schüz J, Joy EJM, et al. (2015) Africa's Oesophageal Cancer Corridor: Geographic Variations in Incidence Correlate with Certain Micronutrient Deficiencies. PLoS ONE 10(10): e0140107. doi: [10.1371/journal.pone.0140107](https://doi.org/10.1371/journal.pone.0140107) PMID: [26448405](https://pubmed.ncbi.nlm.nih.gov/26448405/)