

Research Article

Facet Tropism and Orientation: Risk Factors for Degenerative Lumbar Spinal Stenosis

Janan Abbas ^{1,2} Natan Peled,³ Israel Hershkovitz,¹ and Kamal Hamoud^{2,4,5}

¹Department of Anatomy and Anthropology, Sackler Faculty of Medicine, Tel Aviv University, Tel Aviv 6997801, Israel

²Department of Physical Therapy, Zefat Academic College, Zefat, 13206, Israel

³Department of Radiology, Carmel Medical Center, Haifa 3436212, Israel

⁴Azrieli Faculty of Medicine, Bar-Ilan University, Safed 1311502, Israel

⁵Department of Orthopaedic Surgery, The Baruch Padeh Poriya Medical Center, Tiberias 1520800, Israel

Correspondence should be addressed to Janan Abbas; janan1705@gmail.com

Received 2 February 2020; Accepted 17 June 2020; Published 29 June 2020

Academic Editor: Zbigniew Gugala

Copyright © 2020 Janan Abbas et al. This is an open access article distributed under the Creative Commons Attribution License, which permits unrestricted use, distribution, and reproduction in any medium, provided the original work is properly cited.

The aim of this study is to establish whether facet tropism (FT) and orientation (FO) are associated with degenerative lumbar spinal stenosis (DLSS). A retrospective computerized tomography (CT) study including 274 individuals was divided into two groups: control (82 males and 81 females) and stenosis (59 males and 52 females). All participants have undergone high-resolution CT scan of the lumbar spine in the same position. FT and FO were measured at L1-2 to L5-S1. Significant sagittal FO was noted in the stenosis males (L2-3 to L4-5) and females (L2-3 to L5-S1) compared to the controls. The prevalence of FT was remarkably greater in the stenosis males (L4-5, L5-S1) and females (L3-4, L5-S1) compared to their counterparts in the control group. Our results also showed that FT (L3-4 to L5-S1) increases approximately 2.9 times the likelihood for DLSS development. This study indicates that FO and FT in the lower lumbar spine are significantly associated with DLSS.

1. Introduction

The facet joint or zygapophyseal joint is a synovial joint that plays an important role in balancing the spine segment [1] and controls the spinal kinematic function [2, 3]. Lumbar facet joints are sagittally oriented compared with the lower thoracic region, and their orientation varies between the lumbar levels [4, 5]. Facet tropism (FT) is defined as a difference between the angle of orientation of the right and left facet joints [6]. Additionally, computed tomography (CT) scan is considered the most accurate modality for evaluation of the facet joint [7].

Some authors have correlated the sagittal orientation of the facet joint with degenerative spondylolisthesis (DS) [6, 8–13] and disc disease [14]. Previous studies have also reported that FT is associated with spine degeneration such as facet joint arthrosis [15, 16], degenerative scoliosis [17, 18], disc herniation [18–22], and ligamentum flavum thickening [23, 24]. Others, however, have disputed some of these

associations [6, 25, 26]. Although one study [27] has recently reported that DLSS population manifested significantly smaller facet orientations compared to control yet, no study has investigated, to date, whether facet asymmetry can affect DLSS.

The aim of this study was to establish whether facet structures such as orientation and tropism along all lumbar levels are associated with DLSS population.

2. Materials and Methods

2.1. Study Groups. This is a cross-sectional retrospective study with two groups of individuals. The first one is the control group with 163 subjects (sex ratio: 82M/81F) without spinal stenosis-related symptoms (according to their medical records and interviews) who were referred to the Department of Radiology, Carmel Medical Center, Haifa, Israel, for abdominal CT scans due to abdominal problems. The second included 111 individuals (sex ratio: 59M/52F) with

degenerative lumbar spinal stenosis-related symptoms such as intermittent claudication [28]. The diagnostic criteria for the stenosis group were based on the combination of symptoms and signs together with the imaging findings (cross-sectional area of the dural sac was less than 100 mm^2) [29, 30]. The exclusion criteria for this study were individuals under 40 years of age as well as those with congenital stenosis (AP diameter of the bony canal $< 12\text{ mm}$) [31], fractures, spondylolysis, spondylolisthesis, tumors, Paget's disease, steroid treatment, severe lumbar scoliosis (>20 degrees), and iatrogenic conditions.

2.2. Computed Tomography (CT) Scans. A high-resolution CT image (Brilliance 64, Philips Medical Systems, Cleveland, OH; slice thickness 0.9–3 mm, voltage 120 kV, current 150–570 mA) was utilized which enabled scan processing in all planes. The images were taken as the participants were in the supine position with extended knees. This study was approved by the Ethics Committee of the Carmel Medical Center (0083-07-CMC).

2.3. Facet Joint Orientation (FO)/Facet Angle. The facet joint orientation (FO)/facet angle was measured in the axial plane (bone window) at the level of the intervertebral disc following the method of Noren et al. [22] and defined as the angle between the midsagittal line of the vertebra and the line drawn between the two margins of each of the superior articular facets (Figure 1). The average value of the right and left sides was then calculated.

2.4. Facet Tropism (FT). Facet tropism (FT) was defined as a case in which the absolute number of the difference between the left and right facet orientation angles at each disc level was greater than 7 degrees [25].

2.5. Cross-Sectional Area of Dural Sac (CSAD). The cross-sectional area of dural sac (CSAD) was measured in the axial plane at the lumbar intervertebral disc level [32].

2.6. Statistical Analysis. The statistical analyses were done via SPSS version 20 and the parametric variables were checked for distribution. A chi square test and independent *t*-test analysis were used to compare FT, FO, and CSAD between study groups (control and DLSS). A logistic regression analysis via the "Forward LR" method was used (separated by gender) to define the association between DLSS and facet structure/alignment (dependent variable: DLSS; independent variables: FT, FO, age, and BMI). Reliability of the measurements (repeated measurements of 20 individuals) was evaluated using the intraclass correlation (ICC) coefficient test. The first author (JA) took the measurements twice within intervals of 3-5 days in order to assess intratester reliability of the measurements. Intertester reliability involved the first author (JA) and a senior spine surgeon (KH) who took the measurements within an hour of each other. Both testers were blinded to the results of the measurements. Significant difference was set at $P < 0.05$.

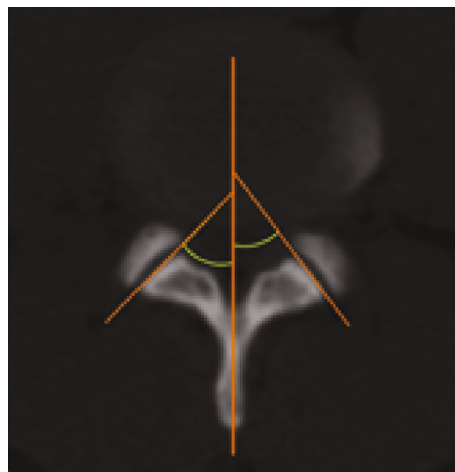


FIGURE 1: The measurement of facet joint orientation.

3. Results

The intratester and intertester reliability results for FO and CSAD were high: 0.971 to 0.933 and 0.930 to 0.890, respectively.

The outcomes of mean age, BMI, and CSAD in both study groups for each gender separately are presented in Table 1.

3.1. Facet Orientation and Tropism in the Study Groups. The average of facet angles was significantly smaller in stenosis males (L2-3 to L4-5) and females (L2-3 to L5-S1) compared to their counterparts in the control group (Table 2).

The prevalence of FT was significantly greater in stenosis males (L4-5 and L5-S1) and females (L3-4 and L5-S1) compared to their counterparts in the control group (Figures 2 and 3).

Our results also indicate that FO (L2-3, L4-5) and FT (L4-5, L5-S1) in males are significantly associated with DLSS (Table 3). In females, the presence of FT (L3-4 and L5-S1) and sagittal facet angle at L3-4 segment increase the likelihood of DLSS development.

4. Discussion

The results of the current study indicate that FT and FO are significantly associated with DLSS. Additionally, facet tropism from L3-4 to L5-S1 increases the risk of developing DLSS by 2.4 to 3.4 times.

It is well-accepted that CT scanning is a superior radiologic modality for the evaluation of both facet joint morphology and degenerative spinal stenosis [7, 33].

Degenerative lumbar spinal stenosis (DLSS) is a common condition in the elderly population, characterized by three-joint complex degeneration [34], ligamentum flavum thickening [35] and osteophytes formation. It has been proposed that the three-joint complex cascade begins at the disc, which loses its height and results in laxity of the facet capsule, leading to increased mobility at the spine segment [36]. Additionally, continuous abnormal segment mobility causes excessive

TABLE 1: Age, BMI, and CSAD (L1-2 to L5-S1) of the study groups (control vs. stenosis) for each gender separately.

Variables	Males			Females		
	Control (mean ± SD)	Stenosis (mean ± SD)	P value	Control (mean ± SD)	Stenosis (mean ± SD)	P value
Age (years)	62.1 ± 12	64.6 ± 10	0.214	60.4 ± 12	62 ± 9	0.429
BMI (kg/m ²)	27.3 ± 4	29.3 ± 4	0.009	27.7 ± 5	30.8 ± 5	0.002
CSAD L1-2 (mm ²)	191 ± 41	124 ± 47	<0.001	199 ± 39	143 ± 33	<0.001
CSAD L2-3 (mm ²)	162 ± 40	81 ± 37	<0.001	171 ± 44	103 ± 38	<0.001
CSAD L3-4 (mm ²)	148 ± 40	60 ± 23	<0.001	150 ± 42	67 ± 31	<0.001
CSAD L4-5 (mm ²)	148 ± 51	53 ± 31	<0.001	146 ± 47	47 ± 20	<0.001
CSAD L5-S1 (mm ²)	157 ± 55	101 ± 44	<0.001	142 ± 49	83 ± 32	<0.001

BMI: body mass index; CSAD: cross-sectional area of dural sac; SD: standard deviation.

TABLE 2: Facet orientation (FO) values of the study groups (control vs. stenosis) by lumbar levels, for each gender separately.

Variables	Males			Females		
	Control (mean ± SD)	Stenosis (mean ± SD)	P value	Control (mean ± SD)	Stenosis (mean ± SD)	P value
FO L1-2 (degree)	23.6 ± 8	21.4 ± 9	0.133	24.4 ± 7	21.7 ± 10	0.079
FO L2-3 (degree)	26.6 ± 8	21.2 ± 8	<0.001	27.6 ± 6	21.9 ± 9	<0.001
FO L3-4 (degree)	34 ± 10	27.8 ± 9	<0.001	36 ± 7	26.6 ± 10	<0.001
FO L4-5 (degree)	43 ± 9	35.6 ± 11	<0.001	45.8 ± 8	37.7 ± 11	<0.001
FO L5-S1 (degree)	49.8 ± 9	46.9 ± 9	0.073	52.2 ± 8	46.2 ± 8	<0.001

SD: standard deviation.

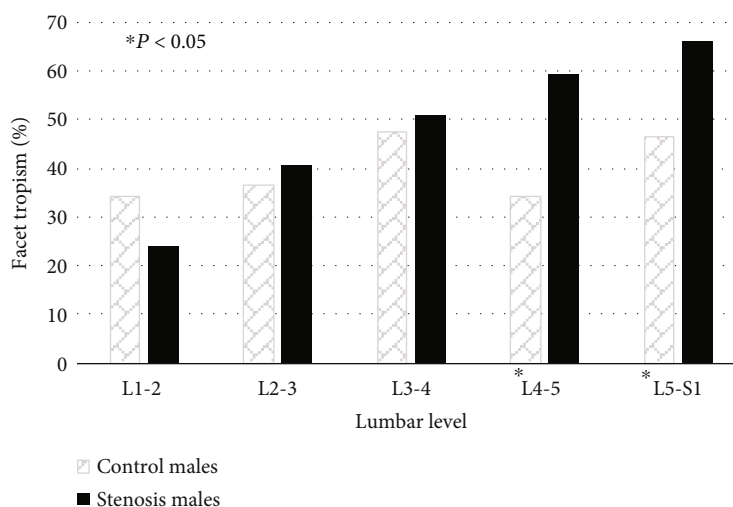


FIGURE 2: Prevalence (%) of facet tropism in both study groups (control and stenosis), by lumbar level, males only.

movement of the facets that subsequently leads to cartilage erosion and facet arthritis.

The association between facet orientation and DLSS has been recently mentioned by Liu and colleagues who reported that individuals with DLSS had remarkable sagittal lumbar facet orientation (from L2-3 to L5-S1) compared with the control group [27]. Moreover, one study has shown that patients with sagittally oriented facets have narrow osseous spinal canals [37]. Grobler and colleagues previously reported that subjects with DS display greater sagittal orientation of L4-5 facet joints compared to both normal popula-

tion and spinal stenosis patients without DS [38]. However, no significant difference was found between stenosis subjects and the normal population.

We found no previous study that has addressed the association between FT and DLSS except for the relationship with DS, hence the lack of comparative analysis.

The association between sagittal FO and DLSS is not surprising since there are sufficient evidences indicating that sagittal orientation of the facets augments the shear forces in the spine segment leading to facet arthrosis and degenerative spondylolisthesis [39, 40]. Previous studies have also

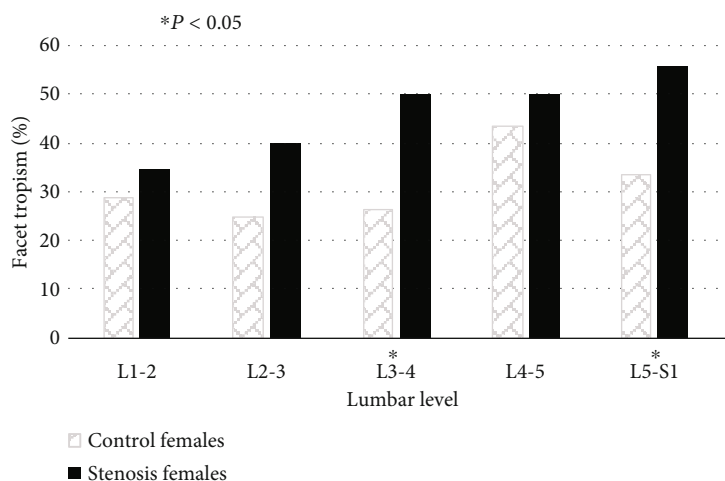


FIGURE 3: Prevalence (%) of facet tropism in both study groups (control and stenosis), by lumbar level, females only.

TABLE 3: A logistic regression analysis demonstrating the variables that are significantly associated with degenerative lumbar stenosis (males and females listed separately).

	OR	CI 95%	P value
Males			
BMI	1.095	1.001-1.198	0.048
FO L2-3	0.944	0.898-0.993	0.024
FO L4-5	0.948	0.908-0.988	0.013
FT L4-5	3.389	1.507-7.621	0.003
FT L5-S1	2.436	1.078-5.507	0.032
Females			
BMI	1.144	1.050-1.245	0.002
FO L3-4	0.877	0.831-0.925	<0.001
FT L3-4	3.195	1.266-8.060	0.014
FT L5-S1	2.962	1.176-7.460	0.021

OR: odds ratios; CI: confidence intervals; BMI: body mass index; FO: facet orientation; FT: facet tropism.

reported that the prevalence of facet arthrosis and DS is greater in the DLSS population compared to the general population [41].

The lumbar spine unit function depends on the congruity of the intervertebral disc anteriorly and two facet joints posteriorly. The facet joint has an essential role to resist forward displacement and rotation [42] and carries about 16% of the load on the lumbar spine [43].

Our study demonstrated that both FO and FT are considered risk factors for the development of symptomatic DLSS. This result implies that (a) FT and FO could be two different entities and (b) the trigger for spine segment degeneration could begin at the posterior elements such as the facet joints rather than the intervertebral disc. Our results can be supported by the study of Miyasaki et al. that proposed that patients with sagittally oriented facets might be predisposed to lumbar spinal canal stenosis [37].

A systematic review and meta-analysis study has recently confirmed that individuals with DS at L4-5 have more

remarkable FT and sagittal FO [10]. Although it is not apparent whether FO and FT act as primary manifestation or secondary reconstruction [44, 45], our results lend support to the notion that FT could accelerate both disc disease and DS. Some studies have reported that FT has the potential to alter the biomechanical nature of the lumbar spine causing pathologic changes in the intervertebral disc [6, 46]. Boden and colleague, for example, have reported that the sagittally oriented facet joints at L4-L5 were significantly associated with disc herniation. It has also been reported that FT makes the corresponding segment more vulnerable to external moments or anterior shear force [47]. Cyron and Hutton suggested a relationship between FT and instability [2]. Furthermore, one study has reported that subjects with disc herniation exhibited asymmetry and sagittalization of facet joints [48]. Park and colleagues have mentioned that the degree of FT may influence the type of disc herniation (e.g., far lateral or posterolateral) [49].

It is noteworthy that only the lower lumbar facets (L3-4 to L5-S1) contribute to DLSS development, as these levels are more susceptible to aging and degeneration [6, 11, 15].

Finally, it is interesting to mention that, in males, FT at L4-5 and L5-S1 levels are related to DLSS, whereas, in females, the corresponding facets are at L3-4 and L5-S1. This discrepancy between males and females can be partially explained by the difference in the lumbar lordosis shape as Hay et al. have reported that females have greater curvedness than males [50].

In summary, we postulate that FT and sagittal FO are two different entities that could lead to disc degeneration and facet arthrosis, which in some cases (e.g., combined with greater BMI) may harm the spine stability thus leading to lumbar spinal stenosis.

4.1. Limitation of the Study. This is a retrospective study, and the outcomes should be supported by well-established prospective studies. Additionally, we examined facet angles in an axial plane; however, facet structures are complicated 3-dimensional structures, and this fact should be considered in further studies.

5. Conclusions

Our results indicate that both FT and facet sagittal orientation in the lower lumbar spine are risk factors for DLSS development. However, no causal association is mentioned.

Data Availability

The data used to support the findings of this study are available from the corresponding author upon request.

Conflicts of Interest

The authors declare that they have no conflicts of interest.

Acknowledgments

The authors would like to thank the Dan David Foundation, the Israel Science Foundation (Grant number 1397/08), and the Tassia and Dr. Joseph Meychan Chair for the History and Philosophy of Medicine, for funding this research. We also thank Margie Serling Cohn and Chaim Cohen for their editorial assistance.

References

- [1] H. F. Farfan and J. D. Sullivan, "The relation of facet orientation to intervertebral disc failure," *Canadian Journal of Surgery*, vol. 10, pp. 179–185, 1987.
- [2] B. M. Cyron and W. C. Hutton, "Articular tropism and stability of the lumbar spine," *Spine*, vol. 5, no. 2, pp. 168–172, 1980.
- [3] A. M. Ahmed, N. A. Duncan, and D. L. Burke, "The effect of facet geometry on the axial torque-rotation response of lumbar motion segments," *Spine*, vol. 15, no. 5, pp. 391–401, 1990.
- [4] M. M. Panjabi, T. Oxland, K. Takata, V. Goel, J. Duranceau, and M. Krag, "Articular facets of the human spine. Quantitative three-dimensional anatomy," *Spine*, vol. 18, no. 10, pp. 1298–1310, 1993.
- [5] Y. M. Masharawi, D. Alperovitch-Najenson, N. Steinberg et al., "Lumbar facet orientation in spondylolysis: a skeletal study," *Spine*, vol. 32, no. 6, pp. E176–E180, 2007.
- [6] S. D. Boden, K. D. Riew, K. Yamaguchi, T. P. Branch, D. Schellinger, and S. W. Wiesel, "Orientation of the lumbar facet joints," *The Journal of Bone and Joint Surgery. American Volume*, vol. 78, no. 3, pp. 403–411, 1996.
- [7] G. P. Varlotta, T. R. Lefkowitz, M. Schweitzer et al., "The lumbar facet joint: a review of current knowledge: part 1: anatomy, biomechanics, and grading," *Skeletal Radiology*, vol. 40, no. 1, pp. 13–23, 2011.
- [8] K. Sato, E. Wakamatsu, A. Yoshizum, N. Watanabe, and O. Irei, "The configuration of the laminae and facet joints in degenerative spondylolisthesis. A clinicoradiologic study," *Spine*, vol. 14, no. 11, pp. 1265–1271, 1989.
- [9] G. Cinotti, F. Postacchini, F. Fassari, and S. Urso, "Predisposing factors in degenerative spondylolisthesis. A radiographic and CT study," *International Orthopaedics*, vol. 21, no. 5, pp. 337–342, 1997.
- [10] Z. Liu, Y. Duan, X. Rong, B. Wang, H. Chen, and H. Liu, "Variation of facet joint orientation and tropism in lumbar degenerative spondylolisthesis and disc herniation at L4-L5: A systematic review and meta-analysis," *Clinical Neurology and Neurosurgery*, vol. 161, pp. 41–47, 2017.
- [11] L. Y. Dai, "Orientation and tropism of lumbar facet joints in degenerative spondylolisthesis," *International Orthopaedics*, vol. 25, no. 1, pp. 40–42, 2001.
- [12] D. Samartzis, J. P. Y. Cheung, S. Rajasekaran et al., "Critical values of facet joint angulation and tropism in the development of lumbar degenerative spondylolisthesis: an international, large-scale multicenter study by the AOSpine Asia Pacific Research collaboration Consortium," *Global Spine Journal*, vol. 6, no. 5, pp. 414–421, 2016.
- [13] Y. E. Kundakci, N. U. Dogan, I. Guler, I. I. Uysal, Z. Fazliogullari, and A. K. Karabulut, "Evaluation of the facet joints with magnetic resonance images in the patients with disc degeneration and spondylolisthesis," *Surgical and Radiological Anatomy*, vol. 40, no. 9, pp. 1063–1075, 2018.
- [14] D. Degulmadi, B. Dave, A. Krishnan, and D. Patel, "The relationship of facet joint orientation and tropism with lumbar disc herniation and degenerative spondylolisthesis in the lower lumbar spine," *Asian Spine Journal*, vol. 13, no. 1, pp. 22–28, 2019.
- [15] M. H. Kong, W. He, Y.-D. Tsai et al., "Relationship of facet tropism with degeneration and stability of functional spinal unit," *Yonsei Medical Journal*, vol. 50, no. 5, pp. 624–629, 2009.
- [16] F. R. Murtagh, R. D. Paulsen, and G. R. Reichtine, "The role and incidence of facet tropism in lumbar spine degenerative disc disease," *Journal of Spinal Disorders*, vol. 4, no. 1, pp. 86–89, 1991.
- [17] H. Bao, F. Zhu, Z. Liu et al., "Vertebral rotatory subluxation in degenerative scoliosis: facet joint tropism is related," *Spine*, vol. 39, no. 26, pp. B45–B51, 2014.
- [18] T. Gao, Q. Lai, S. Zhou et al., "Correlation between facet tropism and lumbar degenerative disease: a retrospective analysis," *BMC Musculoskeletal Disorders*, vol. 18, no. 1, p. 483, 2017.
- [19] Q. Zhou, D. Teng, T. Zhang, X. Lei, and W. Jiang, "Association of facet tropism and orientation with lumbar disc herniation in young patients," *Neurological Science*, vol. 39, no. 5, pp. 841–846, 2018.
- [20] D. Y. Lee, Y. Ahn, and S.-H. Lee, "The influence of facet tropism on herniation of the lumbar disc in adolescents and adults," *The Journal of Bone and Joint Surgery. British*, vol. 88-B, no. 4, pp. 520–523, 2006.
- [21] D. H. Do, C. E. Taghavi, W. Fong, M. H. Kong, Y. Morishita, and J. C. Wang, "The relationship between degree of facet tropism and amount of dynamic disc bulge in lumbar spine of patients symptomatic for low back pain," *European Spine Journal*, vol. 20, no. 1, pp. 71–78, 2011.
- [22] R. Noren, J. Trafimow, G. B. J. Andersson, and M. S. Huckman, "The role of facet joint tropism and facet angle in disc degeneration," *Spine*, vol. 16, no. 5, pp. 530–532, 1991.
- [23] P. R. Appolonio, T. Mattar, A. B. Costa, E. S. V. Filho, and L. M. R. Rodrigues, "Thickening of spine ligamentum flavum and facet tropism," *Coluna/Columna*, vol. 13, no. 1, pp. 39–42, 2014.
- [24] H.-x. Liu, Y. Shen, P. Shang, Y.-x. Ma, X.-j. Cheng, and H.-z. Xu, "Asymmetric facet joint osteoarthritis and its relationships to facet orientation, facet tropism and ligamentum flavum thickening," *Clin Spine Surg*, vol. 29, no. 9, pp. 394–398, 2016.

- [25] H. Vanharanta, T. Floyd, D. D. Ohnmeiss, S. H. Hochschuler, and R. D. Guyer, "The relationship of facet tropism to degenerative disc disease," *Spine*, vol. 18, no. 8, pp. 1000–1005, 1993.
- [26] H. Y. Ko and B. K. Park, "Facet tropism in lumbar motion segments and its significance in disc herniation," *Archives of Physical Medicine and Rehabilitation*, vol. 78, no. 11, pp. 1211–1214, 1997.
- [27] X. Liu, X. Zhao, Y. Long et al., "Facet sagittal orientation: possible role in the pathology of degenerative lumbar spinal stenosis," *Spine*, vol. 43, no. 14, pp. 955–958, 2018.
- [28] J. A. Turner, M. Ersek, L. Herron, and R. Deyo, "Surgery for lumbar spinal stenosis: attempted meta-analysis of the literature," *Spine*, vol. 17, no. 1, pp. 1–8, 1992.
- [29] N. F. Bolender, N. S. Schönström, and D. M. Spengler, "Role of computed tomography and myelography in the diagnosis of central spinal stenosis," *Journal of Bone and Joint Surgery*, vol. 67, no. 2, pp. 240–246, 1985.
- [30] N. S. R. Schonstrom, N.-F. Bolender, and D. M. Spengler, "The pathomorphology of spinal stenosis as seen on CT scans of the lumbar spine," *Spine*, vol. 10, no. 9, pp. 806–811, 1985.
- [31] H. E. N. K. Verbiest, "Pathomorphologic aspects of developmental lumbar stenosis," *The Orthopedic clinics of North America*, vol. 6, no. 1, pp. 177–196, 1975.
- [32] J. Abbas, V. Slon, D. Stein, N. Peled, I. Hershkovitz, and K. Hamoud, "In the quest for degenerative lumbar spinal stenosis etiology: the Schmorl's nodes model," *BMC Musculoskeletal disorder*, vol. 18, no. 1, p. 164, 2017.
- [33] S. S. Eun, H. Y. Lee, S. H. Lee, K. H. Kim, and W. C. Liu, "MRI versus CT for the diagnosis of lumbar spinal stenosis," *Journal of Neuroradiology*, vol. 39, no. 2, pp. 104–109, 2012.
- [34] J. Lurie and C. Tomkins-Lane, "Management of lumbar spinal stenosis," *BMJ*, vol. 352, p. 6234, 2016.
- [35] J. Abbas, K. Hamoud, Y. M. Masharawi et al., "Ligamentum flavum thickness in normal and stenotic lumbar spines," *Spine*, vol. 35, no. 12, pp. 1225–1230, 2010.
- [36] W. H. Kirkaldy-Willis, J. H. Wedge, K. Yong-Hing, and J. Reilly, "Pathology and pathogenesis of lumbar spondylosis and stenosis," *Spine*, vol. 3, no. 4, pp. 319–328, 1978.
- [37] M. Miyazaki, Y. Morishita, C. Takita, T. Yoshiiwa, J. C. Wang, and H. Tsumura, "Analysis of the relationship between facet joint angle orientation and lumbar spine canal diameter with respect to the kinematics of the lumbar spinal unit," *Journal of Spinal Disorders & Techniques*, vol. 23, no. 4, pp. 242–248, 2010.
- [38] L. J. Grobler, P. A. Robertson, J. E. Novotny, and M. H. Pope, "Etiology of spondylolisthesis. Assessment of the role played by lumbar facet joint morphology," *Spine*, vol. 18, no. 1, pp. 80–91, 1993.
- [39] L. Kalichman and D. J. Hunter, "Degenerative lumbar spondylolisthesis anatomy, biomechanics and risk factors," *Journal of Back and Musculoskeletal Rehabilitation*, vol. 21, no. 1, pp. 1–12, 2008.
- [40] W. Pichaisak, C. Chotiyarnwong, and P. Chotiyarnwong, "Facet joint orientation and tropism in lumbar degenerative disc disease and spondylolisthesis," *Journal of the Medical Association of Thailand*, vol. 98, no. 4, pp. 373–379, 2015.
- [41] J. Abbas, K. Hamoud, S. Peleg et al., "Facet joints arthrosis in normal and stenotic lumbar spines," *Spine*, vol. 36, no. 24, pp. E1541–E1546, 2011.
- [42] N. V. Jaumard, W. C. Welch, and B. A. Winkelstein, "Spinal facet joint biomechanics and mechanotransduction in normal, injury and degenerative conditions," *Journal of Biomechanical Engineering*, vol. 133, no. 7, pp. 071010–071031, 2011.
- [43] M. A. Adams and W. C. Hutton, "The effect of posture on the role of the apophysial joints in resisting intervertebral compressive forces," *Journal of Bone and Joint Surgery*, vol. 62, no. 3, pp. 358–362, 1980.
- [44] T. Toyone, T. Ozawa, K. Kamikawa et al., "Facet joint orientation difference between cephalad and caudad portions: a possible cause of degenerative spondylolisthesis," *Spine*, vol. 34, no. 21, pp. 2259–2262, 2009.
- [45] U. Berlemann, D. J. Jeszenszky, D. W. Bühler, and J. Harms, "Facet joint remodeling in degenerative spondylolisthesis: an investigation of joint orientation and tropism," *European Spine Journal*, vol. 7, no. 5, pp. 376–380, 1998.
- [46] R. S. Tulsi and G. M. Hermanis, "A study of the angle of inclination and facet curvature of superior lumbar zygapophyseal facets," *Spine*, vol. 18, no. 10, pp. 1311–1317, 1993.
- [47] H. J. Kim, H. J. Chun, H. M. Lee et al., "The biomechanical influence of the facet joint orientation and the facet tropism in the lumbar spine," *The Spine Journal*, vol. 13, no. 10, pp. 1301–1308, 2013.
- [48] I. Karacan, T. Aydin, Z. Sahin et al., "Facet angles in lumbar disc herniation: their relation to anthropometric features," *Spine*, vol. 29, no. 10, pp. 1132–1136, 2004.
- [49] J. B. Park, H. Chang, K. W. Kim, and S. J. Park, "Facet tropism: a comparison between far lateral and posterolateral lumbar disc herniations," *Spine*, vol. 26, no. 6, pp. 677–679, 2001.
- [50] O. Hay, G. Dar, J. Abbas et al., "The Lumbar Lordosis in Males and Females, Revisited," *PLoS One*, vol. 10, no. 8, article e0133685, 2015.