



OPEN

Insights and genetic features of extended-spectrum beta-lactamase producing *Escherichia coli* isolates from two hospitals in Ghana

Samiratu Mahazu^{1,2}, Wakana Sato¹, Alafate Ayibieke¹, Isaac Prah^{1,3}, Takaya Hayashi³, Toshihiko Suzuki⁴, Shiroh Iwanaga², Anthony Ablordey⁵✉ & Ryoichi Saito¹✉

Recently, the emergence and rapid dissemination of extended-spectrum beta-lactamase (ESBL)-producing bacteria, particularly of the family Enterobacteriaceae, has posed serious healthcare challenges. Here, we determined the antimicrobial susceptibility and genetic characteristics of 164 *Escherichia coli* strains isolated from infected patients in two hospitals in Ghana. In total, 102 cefotaxime-resistant isolates (62.2%) were identified as ESBL-producers. Multilocus sequence typing of the ESBL-producers identified 20 different sequence types (STs) with ST131 (n = 25, 24.5%) as the dominant group. Other detected STs included ST410 (n = 21, 20.6%) and ST617 (n = 19, 18.6%). All identified ESBL-producers harbored *bla*_{CTX-M-14}, *bla*_{CTX-M-15}, or *bla*_{CTX-M-27}, with *bla*_{CTX-M-15} (n = 96, 94.1%) being the most predominant ESBL allele. Further analysis showed that the immediate genetic environment around *bla*_{CTX-M-15} is conserved within *bla*_{CTX-M-15} containing strains. Five of the 25 ST131 isolates were clustered with clade A, one with sub-clade C1, and 19 with the dominant sub-clade C2. The results show that fluoroquinolone-resistant, *bla*_{CTX-M-14}- and *bla*_{CTX-M-15}-producing ESBL *E. coli* ST131 strains belonging to clade A and sub-clades C1 and C2 are disseminating in Ghanaian hospitals. To the best of our knowledge, this is the first report of the ST131 phylogeny in Ghana.

Beta-lactam antimicrobials have been used extensively in healthcare settings and animal husbandry to treat bacterial infections. The spread of extended-spectrum β -lactamase (ESBL)-producing *Escherichia coli*, such as the high-risk clone ST131, has resulted in a global surge in the number of ESBL-producing *E. coli* strains after their first identification in 1983 in Germany^{1,2}.

Escherichia coli ST131 is a pandemic strain responsible for numerous cases of recurrent urinary tract infections and sepsis³. Following its first identification in 2008, ST131 has attained global dominance, possibly primed by the sequential acquisition of certain virulence factors and antibiotic-resistant determinants⁴⁻⁶.

Proliferation of this pathogenic clone was demonstrated to be driven by a single subclone, H30^{7,8}, also named clade C, which carries genes encoding the type 1 fimbriae adhesin. Given its multidrug resistance and association with ESBLs, ST131 is an urgent public health concern. Recently, resistance to carbapenems and colistin in ST131 clones was reported⁹⁻¹¹. This phenomenon reduces therapeutic options, as these are last-resort antibiotics¹¹.

Cefotaximase-15 beta-lactamase (*bla*_{CTX-M-15}) is widely disseminated and is the most frequently identified ESBL allele in ST131¹². Phylogenetically, ST131 is classified into three clades, A, B, and C. Clade A is the most divergent, antibiotic-sensitive clade associated with *fimH41* and differs from B and C by approximately 7000 and 8900 single-nucleotide polymorphisms (SNPs), respectively^{3,13}. Clade B, known to be involved in human-to-animal transmission, is typically fluoroquinolone-susceptible and differs from clade C by 70 nucleotide substitutions; and is identified primarily by *fimH22*^{3,14}. The evolution of clade C was reported to coincide with the introduction and clinical use of fluoroquinolones (FQs) in the mid-1980s¹⁵. Strains in clade C possess FQ alleles

¹Department of Molecular Microbiology, Tokyo Medical and Dental University, Tokyo, Japan. ²Department of Environmental Parasitology, Tokyo Medical and Dental University, Tokyo, Japan. ³Department of Molecular Virology, Tokyo Medical and Dental University, Tokyo, Japan. ⁴Department of Bacterial Pathogenesis, Tokyo Medical and Dental University, Tokyo, Japan. ⁵Department of Bacteriology, Noguchi Memorial Institute for Medical Research, University of Ghana, Accra, Ghana. ✉email: aablordey@noguchi.ug.edu.gh; r-saito.mi@tmd.ac.jp

Antimicrobial agents	Breakpoint for resistance (µg/mL)	% resistance	MIC (µg/mL)		
			Range	MIC ₅₀	MIC ₉₀
Piperacillin	≥ 128	86.0	1–64	> 64	> 64
Cefazolin	≥ 8	72.0	1–>16	> 16	> 16
Cefotaxime	≥ 4	62.2	≤ 0.5–> 32	32	> 32
Ceftazidime	≥ 16	48.8	≤ 0.5–> 16	8	> 16
Cefepime	≥ 16	50.6	≤ 0.5–> 16	16	> 16
Sulbactam/ampicillin	≥ 16/32	40.9	≤ 2/4–> 8/16	8/16	> 8/16
Cefpodoxime	≥ 8	62.2	≤ 1–> 4	> 4	> 4
Aztreonam	≥ 16	57.3	≤ 0.5–> 16	16	> 16
Imipenem	≥ 4	0.0	≤ 0.25–2	≤ 0.25	≤ 0.25
Meropenem	≥ 4	0.0	≤ 0.25–1	≤ 0.25	≤ 0.25
Gentamicin	≥ 16	39.0	≤ 0.25–> 8	1	> 8
Amikacin	≥ 64	1.83	≤ 1–> 32	4	16
Minocycline	≥ 16	42.1	0.5–> 8	8	> 8
Fosfomycin	≥ 256	0.0	≤ 32–64	≤ 32	≤ 32
Sulfamethoxazole/trimethoprim	≥ 76/4	87.8	≤ 9.5/0.5–> 38/2	> 38/2	> 38/2
Levofloxacin	≥ 2	63.4	≤ 0.25–> 4	> 4	> 4
Cefmetazole	≥ 64	2.4	≤ 0.5–128	2	8
Ciprofloxacin	≥ 1	65.9	≤ 0.25–> 8	> 8	> 8

Table 1. Minimum inhibitory concentration 50 (MIC₅₀) and Minimum inhibitory concentration 90 (MIC₉₀) values and antibiotics resistance percentage values of 164 *E. coli* isolates.

that are consistent with their FQ-resistant phenotype³. Clade C also appears to be the most dominant group expressing the *fimH30* allele³. This clade was further divided into nested sub-lineages C1/H30R and C2/H30Rx. C1/H30R is often associated with *bla*_{CTX-M-14}/*bla*_{CTX-M-27}, and C2/H30Rx is associated with *bla*_{CTX-M-15}-type ESBLs, with the ESBL alleles typically carried on IncF plasmids^{16–18}.

Previous studies demonstrated that other hypervirulent STs have not attained the same global prominence as ST131; however, the unique traits responsible for the global dissemination of ST131 remain unclear^{13,19}. Although several studies have reported on the phylogeny of ST131 globally, data on ST131 in Ghana is scanty. Here we characterized 25 ST131 isolates from Ghana by whole genome sequencing. We investigated their genetic features and phylogenetic relationship with other globally described ST131 strains.

Findings from this study should provide insights into the role of insertion sequences and plasmids in promoting antimicrobial resistance and enable determinations of the extent of spread of various clades in Ghana.

Results

Antibiotic susceptibility profiles and characterization of ESBLs. Overall, *E. coli* isolates showed varying proportions of resistance to the antibiotics against which they were tested. The resistance ranged from 1.83% (amikacin) to 87.8% (sulfamethoxazole trimethoprim). Among the isolates, 104 (63.4%), 102 (62.2%), and 108 (65.9%) were resistant to levofloxacin, cefotaxime, and ciprofloxacin, respectively. The rates of antibiotic resistance, MIC₅₀, MIC₉₀, and ranges of all isolates are shown in Table 1. All 102 (62.2%) CTX-resistant *E. coli* isolates were ESBL-producers; among them, 96 (94.1%) harbored *bla*_{CTX-M-15}, five had *bla*_{CTX-M-14}, and one had *bla*_{CTX-M-27}. Among the 102 ESBL-producers, 90 (88.2%) had co-resistance to either ciprofloxacin or levofloxacin. Double mutations, serine 83 to leucine (S83L) and aspartic acid 87 to asparagine (D87N), were observed in the GyrA regions of 19 isolates, and the single mutation S83L was detected in the GyrA region of five *fimH41* isolates, four of which carried *bla*_{CTX-M-14}-ESBL (Supplementary data S1). All *bla*_{CTX-M-15} isolates with double mutations were associated with elevated MICs for fluoroquinolones, and especially ciprofloxacin (> 8 µg/mL), compared to the relatively low MICs (1 µg/mL) of fluoroquinolones for the *fimH41*, *bla*_{CTX-M-14} ESBL strains (Supplementary data S2) with single mutations.

STs and *fimH* alleles. The 102 ESBL-producers were classified into 20 sequence types (STs; Fig. 1). *E. coli* ST131 was predominant (n = 24, 23.5%), followed by ST410 (n = 21, 20.6%) and ST617 (n = 19, 18.6%). These three STs accounted for approximately three-fifths of the total number of ESBL-producers. Strains identified as ST131 showed high (100%) resistance rate to ciprofloxacin and were co-resistant to other antibiotics (Table 2). Among ST131 strains, we also observed that the *fimH30*-associated strains exhibited high resistance to antibiotics compared to the *fimH41*-bearing strains. However, considering reports about antibiotic sensitivity of *fimH41* strains^{3,13}, it is important to note that *fimH41* strains showed 80% resistance to five antibiotics (Fig. 2). From the initial ST131 PCR screening, one non-ESBL and 24 ESBL isolates belonged to ST131. This non-ESBL producing isolate, also showed low-level resistance (MIC 1 µg/mL) to ciprofloxacin. Considering that ST131 strains are associated with fluoroquinolone resistance²⁰, we included this non-ESBL strain in subsequent analysis after MLST confirmed that it was ST131, to compare ESBLs and non-ESBLs among ST131 strains. The *fimH30* allele

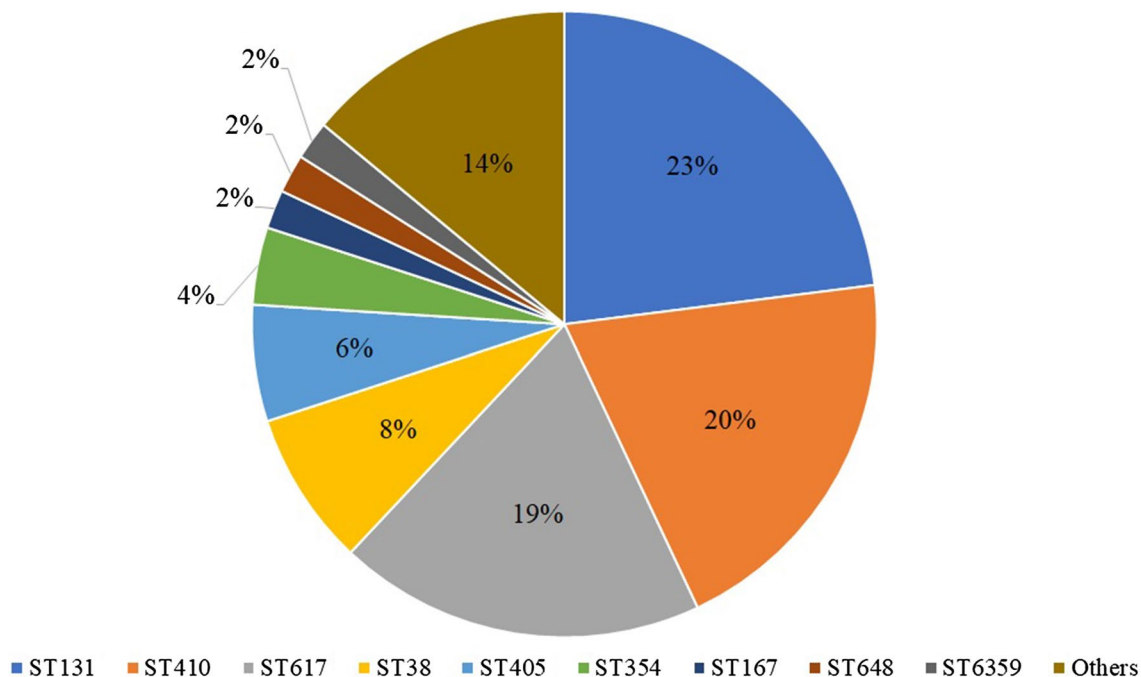


Figure 1. Distribution of sequence types (STs) among 102 extended-spectrum beta-lactamase (ESBL) producing *Escherichia coli* isolates. Isolates grouped as others belong to ST10, ST44, ST156, ST361, ST448, ST744, ST940, ST1303, ST1722, ST1727, and ST1788.

Antimicrobial agents	Breakpoint for resistance(μg/mL)	% resistance	MIC (μg/mL)		
			Range	MIC ₅₀	MIC ₉₀
Piperacillin	≥ 128	96.0	1-> 64	> 64	> 64
Cefazolin	≥ 8	96.0	1-> 16	> 16	> 16
Cefotaxime	≥ 4	96.0	≤ 0.5-> 16	32	> 32
Ceftazidime	≥ 16	76.0	≤ 0.5-> 16	16	> 16
Cefepime	≥ 16	76.0	≤ 0.5-> 16	> 16	> 16
Subactam/ampicillin	≥ 16/32	36.0	≤ 2/4-> 8/16	8/16	> 8/16
Cefpodoxime	≥ 8	96.0	≤ 1-> 4	> 4	> 4
Aztreonam	≥ 16	80.0	≤ 0.5-> 16	> 16	> 16
Imipenem	≥ 4	0.0	≤ 0.25-≤ 0.25	≤ 0.25	≤ 0.25
Meropenem	≥ 4	0.0	≤ 0.25-≤ 0.25	≤ 0.25	≤ 0.25
Gentamicin	≥ 16	64.0	0.5-> 8	> 8	> 8
Amikacin	≥ 64	0.0	≤ 1-16	8	16
Minocycline	≥ 16	20.0	1-> 8	4	> 8
Fosfomycin	≥ 256	0.0	≤ 32-≤ 32	≤ 32	≤ 32
Sulfamethoxazole/trimethoprim	≥ 76/4	92.0	≤ 9.5/0.5-> 38/2	> 38/2	> 38/2
Levofloxacin	≥ 2	80.0	1-> 4	> 4	> 4
Cefmetazole	≥ 64	0.0	1-8	2	4
Ciprofloxacin	≥ 1	100.0	1-> 8	> 8	> 8

Table 2. Minimum Inhibitory Concentration 50 (MIC₅₀) and Minimum Inhibitory Concentration 90 (MIC₉₀) values and antibiotics resistance percentage values among twenty-five (25) ST131 *E. coli* isolates.

(n = 19, 76%) was the most common *fimH* type detected in 19 of 25 *E. coli* ST131 isolates. This was followed by *fimH41* (n = 5, 20%) and *fimH99* (n = 1, 4%). Four of the five isolates with *fimH41* among ST131 harbored *bla*_{CTX-M-14}.

Pangenome and phylogenetic analysis. An analysis of 25 ST131 isolates identified 7700 genes with 3926 core genes, 110 soft core genes in 95–99% of isolates, 1639 shell genes in 15–95%, and 2025 cloud genes in 15% of isolates. The genome sequence of the 25 strains were mapped onto that of reference strain EC958.

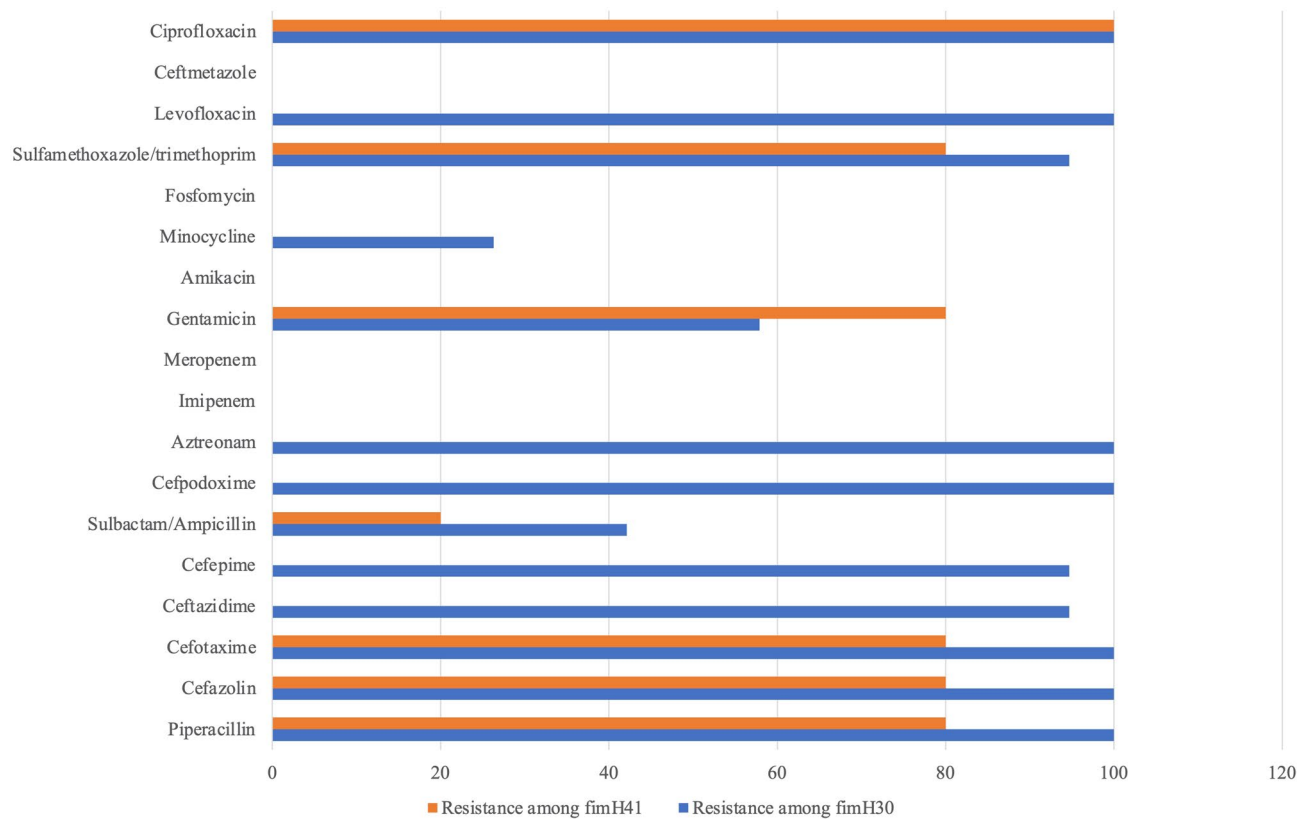


Figure 2. Antibiotic resistance amongst *fimH30* and *fimH41* ST131 strains. Percentages of *fimH30* strains are shown in blue color and the percentages of *fimH41* strains are shown in orange color.

A maximum likelihood tree was built on 1037 core genome SNP alignment. The strains were clustered into two major groups, the *fimH41*-associated group composed of five strains, and a *fimH30* group with 20 strains (Fig. 3). In silico antibiotic resistance gene profiling showed that most isolates contained multiple resistance genes (Supplementary data S1, Fig. 3).

The plasmid replicon type IncFIB was the most common IncF-type plasmid, found in 21 (84.0%) isolates, followed by IncFIA 19 (76.0%) and IncFII 8 (32%). IncQ1 was detected in three (12.0%) isolates. IncN was assigned to one (4.0%) isolate (Supplementary data S1).

An analysis of 25 ST131 and 86 global ST131 isolates identified 11,942 genes. There were 3705 core genes in 99–100% of the isolates, 193 soft core genes in 95–99%, 1583 shell genes in 15–95%, and 6461 cloud genes in 15% of the isolates. Among the global collection of 86 isolates, 24 were isolated in the United States (US), 13 from the United Kingdom (UK), 13 from Germany, six from the Democratic Republic of Congo (DR Congo), four from Denmark, four from Spain, three from Japan, three from Australia, two from Tanzania, two from Ireland, two from Thailand, two from Canada, one from Portugal, one from Laos, one from Vietnam, one from the Netherlands, and one from Nepal. There was no information on the geographical locations of three isolates.

All 86 isolates, together with the 25 isolates from Ghana, classified into six ST131 subclades, A, B0, B, C0, C1, and C2. The dominant subclade observed was C2. Nineteen of the Ghana isolates clustered with strains from various geographic regions in clade C2. One isolate clustered with other strains in clade C1 and five clustered with strains in clade A. None of our isolates clustered with others in C0, B, and B0. Some clustered closely with strains from the US, Ireland, Spain, the UK, Germany, and Australia. Notably, although the strains from other African countries (Democratic Republic of Congo, Tanzania) clustered among the C2 group, none clustered closely with our Ghanaian isolates (Fig. 4).

Genetic environment of *bla*_{CTX-M-15}. *bla*_{CTX-M-15} was found on a 167,739 bp length IncFII plasmid pEC55_1 (accession no. CP059131.1) in strain EC55, flanked by intact *ISEcp1* with 48 bp spacer upstream and an open reading frame 477 (ORF477) which encodes tryptophan synthase, with a 46 bp spacer downstream. This structural arrangement was observed in strains Ec1494 and the 162,792 bp plasmid pS802-CTX-M. However, *bla*_{CTX-M-15} was found on a 3,015,999 bp length in Ec1494, suggesting *bla*_{CTX-M-15} may have been integrated into the chromosome of Ec1494. In pEC55_1 and pS802-CTX-M, these were also flanked by two partial Tn2 transposons truncated by two complete, IS26 insertion sequences further upstream and downstream of *bla*_{CTX-M-15}. The partial Tn2 is truncated by a gene belonging to the *bla*_{TEM} family in pS802-CTX-M, while a *bla*_{OXA} gene, which might have been mobilized by an adjacent IS26, was found lying downstream of *bla*_{CTX-M-15} between two IS26 insertion sequences in pEC55_1. Compared to pEC55_1 and pS802-CTX-M, a partial Tn2 was found only downstream of *bla*_{CTX-M-15} in Ec1494 (Fig. 5).

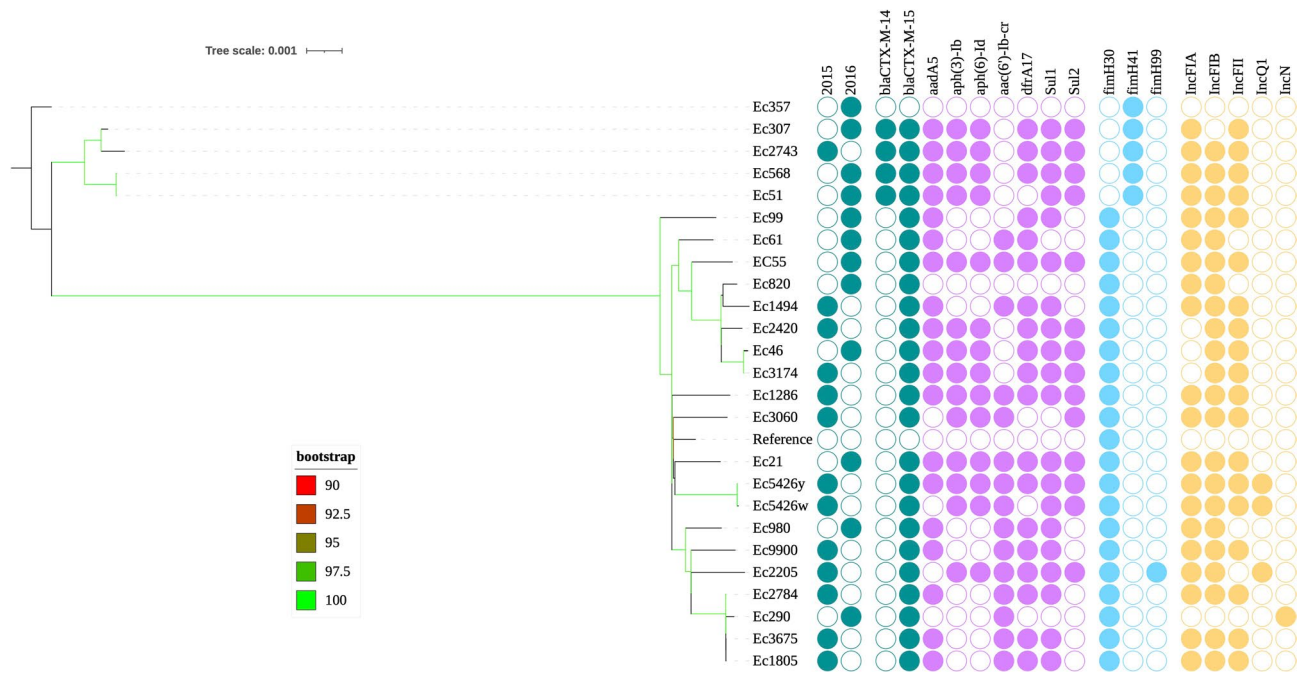


Figure 3. Rooted maximum-likelihood phylogenetic tree of 25 *Escherichia coli* ST131 isolates constructed based on 1037 core-genome alignment. Branch patterns were assessed by 1000 bootstrap replicates. Bootstrap support values are shown from 90 (minimum) to 100 (maximum). Year of isolation, presence of resistance genes, fim types, and plasmid replicon types are shown in a binary fashion as shaded circles with labels at the tips. Figure was visualized and annotated with ITOL v5 (https://itol.embl.de/personal_page.cgi).

Discussion

Our study provides information on the epidemiology, antibiotic resistance, and phylogenetic relationships among ST131 isolates from Ghana. We documented the highest rate of resistance to sulfamethoxazole trimethoprim. This rate was relatively higher than that reported (78.4%) by Freeman et al., also in Ghana²¹, and comparably lower than that reported in a Nigerian study, in which more than 90% of the isolates were resistant to trimethoprim sulfamethoxazole²². Recent studies in Ghana show that antibiotics are heavily abused in Ghanaian communities and among tertiary students. The research disclosed that individuals who engaged in this practice resort to self-medication partly, as a result of financial constraints, as most could barely afford the cost of proper medical care, even when they have knowledge of the implications; moreover, some of these individuals fail to complete the full course of their antibiotic treatment^{23,24}. Additionally, data from previous studies show that antibiotics are prescribed and dispensed particularly in the rural areas of Ghana by unauthorized personnel^{23,24}. The consequences of such practices are the observed clinical resistance to antibiotics and treatment failure due to selective pressure. In light of this, more stringent measures need to be instituted to regulate prescriptions and the usage of antibiotics in Ghana.

More than half of the isolates were frequently resistant to third-generation cephalosporin, cefpodoxime (62.2%), whereas 48.8% were resistant to ceftazidime. A study of the antibiotic prescription rate in Ghana revealed that cephalosporins are highly prescribed because of the availability of inexpensive generic forms that are covered by the National Health Insurance Scheme (NHIS) in Ghana²⁵. Cephalosporins are also preferred for empirical therapy because of their minimal toxicity²⁵. The extensive use and high resistance rate of these antimicrobial agents can result in a serious therapeutic challenge in the future if left unchecked.

In most laboratories, cefotaxime is broadly used to identify ESBL-producing isolates²⁶. Here, 102 (62.2%) isolates were resistant to cefotaxime. These harbored *bla*_{CTX-M-14}, *bla*_{CTX-M-15}, or *bla*_{CTX-M-27}. Consequently, the observed resistance is likely attributed to the presence of *bla*_{CTX-M} genes. All isolates in our collection were susceptible to fosfomycin, meropenem, and imipenem. These medicines are costly, not covered by the NHIS in Ghana, and are used to treat serious infections; therefore, their prescription rate is extremely low²⁵ and this might explain the 100% susceptibility observed in this study.

More than half (62.2%) of the isolates were ESBL-producers, contradictory to the relatively low prevalence (16.1%) among 143 extraintestinal pathogenic (ExPEC) strains in a Tanzanian study²⁷, where the majority (128) of the patients were pregnant women and 15 children. The results also showed that ESBL production was significantly increased in children than in the pregnant women, possibly resulting from hospital-acquired bloodstream infections among the children. Much of the difference between the ESBL prevalence in both studies could be due to the patient group involved, which also points to the possible dissemination of ESBL strains in hospital settings and the need to implement robust systems to control the situation. Another study²⁸ in Ghana detected 62% of ESBL-producing isolates, similar to the result from this study. This high occurrence of ESBLs among clinical isolates is of concern as it is likely to result in reliance on last line antibiotics for treatment and

Tree scale: 0.001

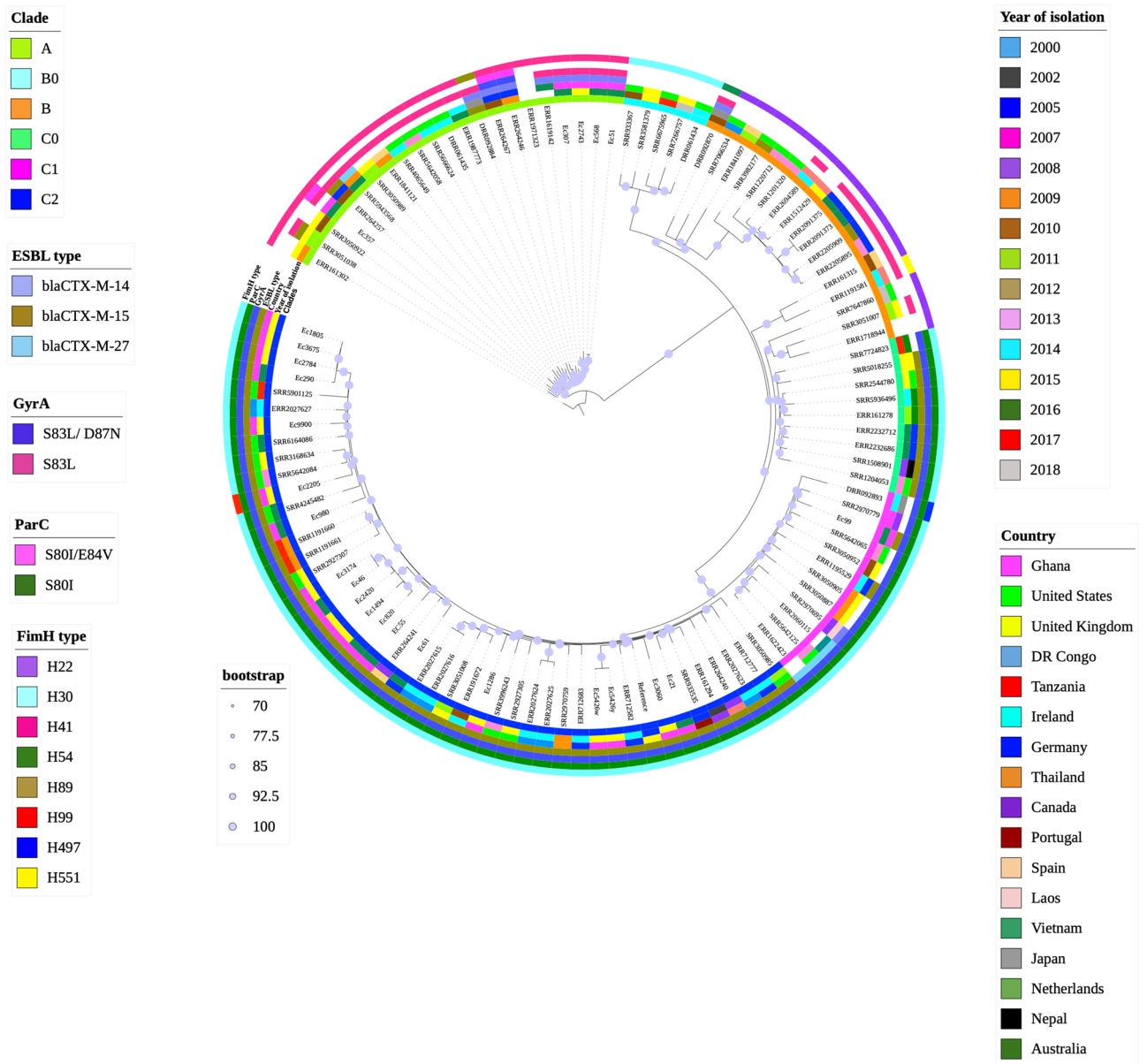


Figure 4. Rooted maximum-likelihood phylogenetic tree of 25 *Escherichia coli* ST131 and 86 *E. coli* ST131 representing the global collection. The phylogenetic tree was built based on 2656 core genome SNPs alignment. Branch patterns were assessed by 1000 bootstrap replicates. Bootstrap support values are shown from 70 (minimum) to 100 (maximum). Clades A, B0, B, C0, C1, and C2 are represented by strips colored lemon green, turquoise, orange, light green, pink, and blue, respectively. The year and country of isolation are displayed in assorted colored strips. Allelic profiling data are shown as color strips from inside out as the ESBL type, GyrA, ParC, and *fim* type. Accession numbers and IDs of the strains are labeled at the tips. Figure was visualized and annotated with ITOL v5 (https://itol.embl.de/personal_page.cgi).

the development of new antibiotics may not keep pace with development of resistance in bacteria, plunging us into a post-antibiotic era²⁹.

Most ESBL-producing *E. coli* have FQ resistance, through chromosomal mutations of FQ-target sites^{30–32}. Like previously reported results for FQ resistance, we found that multiple substitutions in target sites cause high-level ciprofloxacin resistance among *bla*_{CTX-M}-producing *E. coli*. *E. coli* ST131 is a global pandemic clone, and clade C2/*fim*H30-Rx, in particular, is known to be highly virulent^{15,33,34}. In this study, although the *bla*_{CTX-M} producers were diverse, *E. coli* ST131 was the prime genotype among FQ-resistant, *bla*_{CTX-M}-producing *E. coli*, similar to previous reports from Ghana³⁵ and Nigeria³⁶. Specifically, the *fim*H30-Rx clone appears to have spread widely in Ghanaian hospitals, as it has in many different regions worldwide³⁴. The prevalence of ST131 (23.5%) among

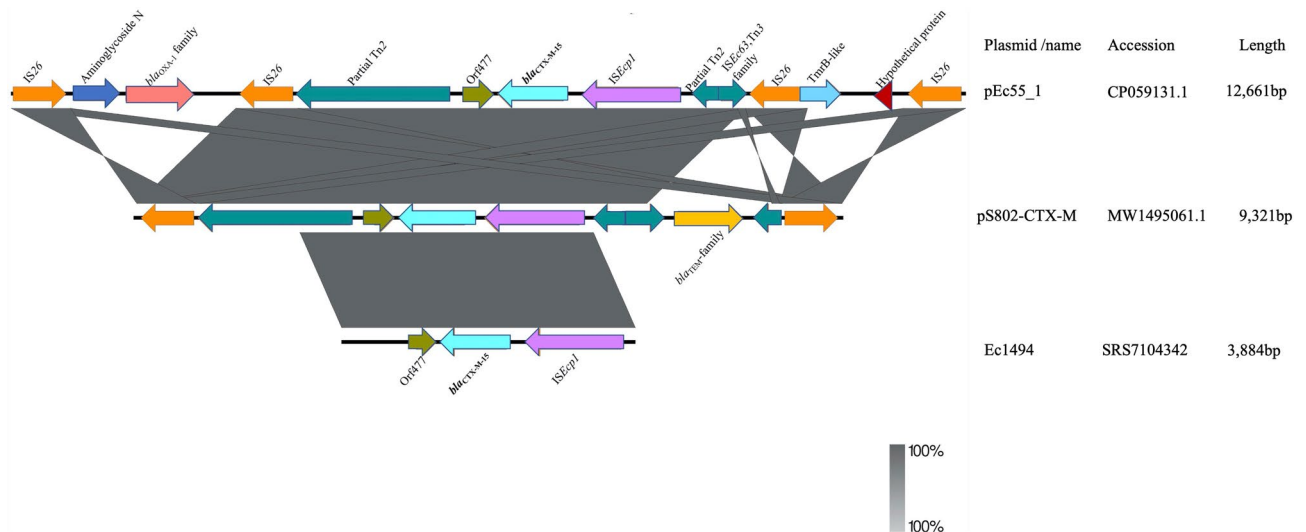


Figure 5. Comparison of the genetic environment of $bla_{CTX-M-15}$. Arrows depict the genes and sequences upstream and downstream of $bla_{CTX-M-15}$ in their transcriptional directions as detected by sequencing. The structure of pS802-CTX-M was reversed to enable easy comparison. Shaded regions indicate regions that are common to all isolates. Figure was created and visualized with Easyfig v2.2.2 (<https://mjsull.github.io/Easyfig/files.html>).

ESBL-producing *E. coli* was comparable to the 20.5% in a study in Europe³⁷; but lower than the prevalence from human isolates (52%) in a Canadian study³⁸. The differences in ST131 prevalence among countries has been attributed to factors such as the antibiotic consumption rate and dietary habits³⁷. This study also reports a high number of FQ-R $bla_{CTX-M-15}$ producing ST410 and ST617 strains. ST410 has been recently described as a high-risk clone with multi-drug resistance like ST131, coupled with a wide host range³⁹. Also, ST410 comprises ESBL and carbapenem-resistant strains, as has been reported of the globally disseminated NDM-positive *E. coli* strains of ST617⁴⁰. The detection of such high-risk clones heightens the need for regular monitoring of drug-resistant clones.

Among the CTX-M-type genes of ESBL-producing *E. coli*, $bla_{CTX-M-15}$ and $bla_{CTX-M-14}$ are the predominant subtypes worldwide; however, data on the prevalence of these genes in Ghana are limited. The results show that $bla_{CTX-M-15}$ is the most widely disseminated CTX-M-type genes in Ghana among ESBL-producing *E. coli*, which agrees with previously published data^{28,41,42}. SNP-based phylogenetic analysis grouped the 25 isolates into two major groups corresponding with their *fimH* alleles. Strains with *fimH41*, otherwise known as clade A isolates, formed a distinct cluster from the *fimH30* isolates. A limitation of this study is that isolates were collected from only two hospitals, one of which is a teaching hospital. We could not get information on the clinical diagnosis and specimens from which some of the isolates were recovered. Analysis of such data would have added to current knowledge on the dissemination of resistant strains.

Phylogenetic analysis clustered the Ghanaian strains closely with some international strains, and most (19/25) belonged to clade C2, a few (5/25) belonged to clade A, and one belonged to clade C1. This shows the extent to which clade C, particularly C2, is disseminated worldwide. All clade C isolates were also characterized as *fimH30*. All five clade A isolates had *fimH41*. The association among these *fim* types suggests that the clades are defined by their *fim* types.

In bacteria, the plasmid-mediated transfer of drug-resistance determinants widely contributes to the dissemination of antimicrobial resistance²⁶. IncFII particularly is suggested to have played a central role in the emergence of C2/H20Rx clade of the ST131¹⁹. The results showed that *E. coli* ST131 isolates harbored plasmids predominantly with replicon type F. This is noteworthy and reinforces the pivotal role of IncF plasmids in the dissemination of antibiotic resistance in Enterobacteriaceae. The results also corroborate the findings of other studies in which IncF plasmids were frequently recovered from *E. coli* isolates^{43–45}. IncF replicon detection also agreed with the results of other reports from Tanzania based on a study where plasmids were detected in *E. coli* isolates from drinking water sources⁴⁶ and a study from Nigeria detecting *E. coli* isolates from humans and bovine sources⁴⁷. All isolates studied harbored IncF plasmids carrying the ESBL genes $bla_{CTX-M-15}$ or $bla_{CTX-M-14}$. There is a postulation that a fluoroquinolone resistant C1 strain obtained ancestral IncFII plasmid and eventually integrated a $bla_{CTX-M-15}$ transposition unit, which has been incorporated into the chromosome through transpositional events and recombination within the C2/H30Rx clade¹⁹.

In agreement with other studies^{45,46}, IncFIB, 21 (84.0%) was the most identified replicon type and was almost always associated with $bla_{CTX-M-15}$, followed by IncFIA (76.0%) and IncFII (32.0%). These results follow the same pattern reported by other authors²⁸ for *E. coli* isolates. Previous studies reported $bla_{CTX-M-15}$ as part of a 2971 bp transposition unit typically found 48 bp to the right of the inverted repeat side of *ISEcp1* with a partial ORF (ORF477), and this transposition unit is inserted in *Tn2*⁴⁸. The extent to which bla_{CTX-M} genes are expressed have also been shown to be highly dependent on the length of the spacer sequence between *ISEcp1* and the start codon of bla_{CTX-M} genes⁴⁹. Notably, in the isolates investigated, *ISEcp1* was found 48 bp upstream of $bla_{CTX-M-15}$. This

arrangement has also been reported in studies in France, Canada, Italy, the UK, and Spain^{50–52}. The evolutionary relationship between *bla*_{CTX-M-15} and *ISEcp1* has also been reported in several countries worldwide⁵³. *ISEcp1* belongs to the insertion sequence family *IS1380* and has been established as one of several factors involved in mobilizing *bla*_{CTX-M} genes⁵³. Transposon sequences in the pEc55_1 was disrupted by IS26 upstream and downstream of *bla*_{CTX-M} genes. This association shows the magnitude of the impact of IS26 on shaping antibiotic resistance regions in gram-negative bacteria⁵³. According to the results of previous studies, the minimum inhibitory concentrations of cefepime and ceftazidime in isolates with *bla*_{CTX-M-15} preceded by IS26 is higher than those in isolates without IS26.

Conclusion

A comparative analysis was used to describe the genetic features of 164 *E. coli* isolates from two hospitals in Ghana. A high percentage (62%) of the isolates was found to produce ESBL, and these were classified into 20 MLST STs. The pandemic clone ST131 was the dominant ST found. This study also reports a conserved genetic environment for the most prevalent *bla*_{CTX-M-15} gene, whether plasmid associated or chromosomal. Phylogenetic analysis revealed that our isolates and other African isolates clustered together with other international strains among clades C, and particularly C2 and A, indicating that same ST131 clone is disseminating worldwide. The detection of FQ-resistant ESBL-producing ST131 shows that ST131 might be circulating in hospitals in Ghana and calls for constant monitoring to control the spread of this highly pathogenic clone. To the best of our knowledge, this is the first report of ST131 that details a SNP-based core genome phylogeny and appraises the epidemiology of its clades and subclades in Ghana.

Materials and methods

Ethical consideration. The Institutional Review Board of the Noguchi Memorial Institute for Medical Research, University of Ghana (FWA00001824) and the Faculty of Medicine, Tokyo Medical and Dental University (M2017-208) reviewed and approved all protocols for this study. Written informed consent was obtained from all participants of the study. All experiments were performed in accordance with the relevant guidelines and regulations.

Bacterial isolation and identification. In total, 164 non-duplicate *E. coli* isolates recovered from clinical specimens of urine (n = 77), high-vaginal swab HVS (n = 20), wound swabs (n = 11), sputum (n = 9), stool (n = 3), endocervical swabs (n = 3), semen (n = 3), ascitic fluid (n = 1), an ear swab (n = 1), pus (n = 1), urethral discharge (n = 1), and others (n = 34) were obtained from the Effia Nkwanta Regional Hospital and Tamale Teaching Hospital between March 2015 and April 2016. The isolates were stored in 10% skimmed milk at –80 °C prior to testing and were identified using a MALDI Biotyper (Bruker Daltonics, Billerica, MA) and VITEK MS (bioMérieux, Marcy-l'Étoile, France).

Antimicrobial susceptibility testing. The minimum inhibitory concentrations of 16 of 18 antibiotics, specifically piperacillin, cefazolin, cefotaxime, ceftazidime, cefepime, sulbactam/ampicillin, cefpodoxime, aztreonam, imipenem, meropenem, gentamicin, amikacin, minocycline, fosfomycin, sulfamethoxazole trimethoprim, and levofloxacin, were determined by broth microdilution on a DP31 dry plate (Eiken Chemical Co., Tokyo, Japan). The minimum inhibitory concentrations of the other two antibiotics, cefmetazole and ciprofloxacin, were determined by the agar dilution method, and the results were interpreted according to the Clinical Laboratory Standards Institute (CLSI) guidelines M100-S30. The experiment was controlled using the *E. coli* reference strain ATCC 25,922 for negative quality control. ESBL phenotypes were confirmed using *Klebsiella pneumoniae* ATCC 700603 as a positive quality control strain according to the CLSI guidelines M100-S30.

Characterization of ESBL genes, ST131 clade screening, and multi-locus sequence typing. DNA was extracted using the Cica Geneus™ DNA Extraction reagent (Kanto Chemical Co., Tokyo, Japan). PCR was conducted to determine the genetic basis of resistance in ESBL-producers, targeting β-lactamase-encoding genes (*bla*_{TEM-1}, 800 bp; *bla*_{SHV-1}, 713 bp; *bla*_{CTX-M}, 688 bp; *bla*_{OXA-1-like}, 564 bp), as previously described⁵⁴. The presence of *bla*_{CTX-M-15} (band size 875 bp) was confirmed as previously described⁵⁵. PCR was conducted to identify *bla*_{CTX-M-14} and *bla*_{CTX-M-27} using primer sets *bla*_{CTX-M-group9-F} (5'-ATGGTGACAAAGAGAGTGCAA-3') and *bla*_{CTX-M-group9-R} (5'-CCCTTCGGCGATGATTCT-3'). Amplification was carried out with an initial denaturation at 94 °C for 4 min, followed by 30 cycles of 94 °C for 1 min, 55 °C for 1 min, and 72 °C for 1 min, and final extension at 72 °C for 10 min. PCR could not sufficiently discriminate between *bla*_{CTX-M-14} and *bla*_{CTX-M-27} because the band sizes for both *bla*_{CTX-M-14} and *bla*_{CTX-M-27} were 870 bp and therefore Sanger sequencing was employed, and the resulting amplified DNA sequences obtained were compared with those in the repository database using the BLAST program of the National Center for Biotechnology Information to distinguish between the genes. Isolates were initially screened for ST131 strains as previously described⁵⁶.

Multi-locus sequence typing of all ESBL isolates was performed as described by Lau et al.⁵. Seven house-keeping genes (*adk*, *fumC*, *gyrB*, *icd*, *mdh*, *purA*, and *recA*) were amplified, sequenced, and an allele number was subsequently allocated according to Enterobase (<https://enterobase.warwick.ac.uk/>). The STs were assigned based on the allelic profiles.

Whole genome sequencing and assembly. ST131 isolates detected were subjected to whole-genome sequencing. Genomic DNA was extracted using the Nucleospin Tissue Kit (Macherey–Nagel, Düren, Germany). DNA (400 ng) was fragmented and subjected to size selection with an insert size of about 400 bp. For sequenc-

ing on DNBSEQ-G400FAST, DNA library was prepared using the MGIEasy FS PCR-Free DNA Library Prep set (MGI, Cat. No. 1000013454). DNA end repair and adapter ligation were conducted using the MGIEasy PF Adapters-96 Kit (MGI, Cat. No. 1000013454) following the manufacturer's instructions. Finally, 75 fmol DNA nanoballs were prepared by combining 50 barcoded samples. The library was sequenced on the DNBSEQ-G400FAST (Tokyo, Japan) for short reads. Reads generated were filtered for quality checks such that low-quality reads ($\leq Q30$), short reads (≤ 10 bp), and accidentally residual adapter sequences were removed. The genomes of two strains (EC55 and Ec1494) were further sequenced on the Nanopore MinION (Oxford Nanopore Technologies, Oxford, UK) for long-read sequences to obtain complete genomes. Libraries were prepared using the SQK-LSK109 ligation sequencing kit (Oxford Nanopore Technologies, Oxford, UK). Low-quality reads ($\leq Q10$) and long reads (≤ 1000 bp) were filtered out. A de novo assembly was run using the assembler unicycler with the de Bruijn graph, and the number of contigs obtained for all samples was 100–200. Hybrid assembly generated five contigs for strain EC55 (accession nos. CP059130.1–CP059134.1), with a chromosome length of 5,216,731 bp and four circular plasmids ranging between 1 and 16 kb. Thirty-seven contigs were generated from the hybrid assembly of sequences of strain Ec1494. The sequences outputted by unicycler was used for all analyses. Sequences were annotated using the online systems RAST and BLAST searches.

Bioinformatics and phylogenetic analysis. Assembled sequences of the 25 Ghanaian strains were aligned to the complete genome sequence of reference strain EC958 (accession no: HG941718). SNPs were predicted, and the alignment file was cleaned using snippyv4.6.0⁵⁷. Recombinant regions were excluded using Gubbinsv2.4.1⁵⁸. Core genome SNPs were extracted using SNP-sites⁵⁹ and a phylogenetic tree of 25 ST131 isolates was constructed using iq-tree⁶⁰. Pangenome analysis was performed using Roary v3.12.0⁶¹. To investigate these isolates within the global context, we constructed a maximum-likelihood phylogenetic tree of all 25 isolates along with a global collection of 86 isolates from a published article⁶² based on 2656 core genome SNP alignment. Data on these 86 strains were obtained in December 2020. The raw reads were retrieved from GenBank and assembled with a unicycler. Assembled genomes were annotated using prokka v1.13⁶³ software. All the genomes were mapped onto EC958, and variants were called. All genomes were processed using same procedure as for the 25 strains described above. The confidence of branching patterns was assessed using 1000 bootstrap replicates. The trees were visualized using iTOL v5⁶⁴. Resfinder v3.3 was interrogated for acquired resistance genes and chromosomal point mutations. Insertion sequences were determined using ISFinder (<https://isfinder.biotoul.fr/>). Fim types were assigned using FimTyper (<https://cge.cbs.dtu.dk/services/FimTyper/>). Plasmid replicon types were determined using PlasmidFinder (<https://cge.cbs.dtu.dk/services/PlasmidFinder/>). To investigate the genetic context of *bla*_{CTX-M-15}, we did a search of the *bla*_{CTX-M-15} region of our strain EC55 using BLAST. The search produced matches with several genomes in the database. We obtained and compared the genetic environment of *bla*_{CTX-M-15} in our strains EC55 and Ec1494 to one found on plasmid pS802-CTX-M (accession no: MW495061), recovered from the database with 100% query cover and sequence identity, and visualized using Easyfigv2.2.2⁶⁵. Complete and draft genome sequences have been deposited in GenBank under the Bioproject PRJNA473419. Accession numbers of all strains used in this study can be found in Supplementary data S1.

Data availability

Datasets generated during this study are available from the corresponding author upon reasonable request.

Received: 12 April 2021; Accepted: 17 January 2022

Published online: 03 February 2022

References

- Song, J., Oh, S. S., Kim, J., Park, S. & Shin, J. Clinically relevant extended-spectrum β -lactamase-producing *Escherichia coli* isolates from food animals in South Korea. *Front. Microbiol.* **11**, 604. <https://doi.org/10.3389/fmicb.2020.00604> (2020).
- Pitout, J. D., Nordmann, P., Laupland, K. B. & Poirel, L. Emergence of Enterobacteriaceae producing extended-spectrum beta-lactamases (ESBLs) in the community. *J. Antimicrob. Chemother.* **56**, 52–59. <https://doi.org/10.1093/jac/dki166> (2005).
- Petty, N. K. *et al.* Global dissemination of a multidrug resistant *Escherichia coli* clone. *Proc. Natl. Acad. Sci. USA* **111**, 5694–5699. <https://doi.org/10.1073/pnas.1322678111> (2014).
- Nicolas-Chanoine, M. H. *et al.* Intercontinental emergence of *Escherichia coli* clone O25:H4-ST131 producing CTX-M-15. *J. Antimicrob. Chemother.* **61**, 273–281. <https://doi.org/10.1093/jac/dkm464> (2008).
- Lau, S. H. *et al.* Major uropathogenic *Escherichia coli* strain isolated in the northwest of England identified by multilocus sequence typing. *J. Clin. Microbiol.* **46**, 1076–1080. <https://doi.org/10.1128/JCM.02065-07> (2008).
- Pitout, J. D. & DeVinney, R. *Escherichia coli* ST131: A multidrug-resistant clone primed for global domination. *F1000Res* <https://doi.org/10.12688/f1000research.10609.1> (2017).
- Johnson, J. R. *et al.* Abrupt emergence of a single dominant multidrug-resistant strain of *Escherichia coli*. *J. Infect. Dis.* **207**, 919–928. <https://doi.org/10.1093/infdis/jis933> (2013).
- Blanc, V. *et al.* Prevalence of day-care centre children (France) with faecal CTX-M-producing *Escherichia coli* comprising O25b:H4 and O16:H5 ST131 strains. *J. Antimicrob. Chemother.* **69**, 1231–1237. <https://doi.org/10.1093/jac/dkt519> (2014).
- Dafopoulou, K. *et al.* Detection of colistin resistance in the highly virulent *Escherichia coli* ST131 H30Rx clone in Greece. *J. Glob. Antimicrob. Resist.* **20**, 31–32. <https://doi.org/10.1016/j.jgar.2019.11.014> (2020).
- Saidenberg, A. B. S. *et al.* Mcr-positive *Escherichia coli* ST131-H22 from poultry in Brazil. *Emerg. Infect. Dis.* **26**, 1951–1954. <https://doi.org/10.3201/eid2608.191724> (2020).
- Gong, L. *et al.* A Nosocomial respiratory infection outbreak of carbapenem-resistant *Escherichia coli* ST131 with transmissible *bla*_{KPC-2} carrying plasmids. *Front. Microbiol.* **11**, 2068. <https://doi.org/10.3389/fmicb.2020.02068> (2020).
- Doi, Y. *et al.* Community-associated extended-spectrum β -lactamase-producing *Escherichia coli* infection in the United States. *Clin. Infect. Dis.* **56**, 641–648. <https://doi.org/10.1093/cid/cis942> (2013).
- Pitout, J. D. D. & Finn, T. J. The evolutionary puzzle of *Escherichia coli* ST131. *Infect. Genet. Evol.* **81**, 104265. <https://doi.org/10.1016/j.meegid.2020.104265> (2020).
- Liu, C. M. *et al.* *Escherichia coli* ST131-H22 as foodborne uropathogen. *MBio* <https://doi.org/10.1128/mBio.00470-18> (2018).

15. Ben Zakour, N. L. *et al.* Sequential acquisition of virulence and fluoroquinolone resistance has shaped the evolution of *Escherichia coli* ST131. *MBio* **7**, e00347–00316. <https://doi.org/10.1128/mBio.00347-16> (2016).
16. Decano, A. G. *et al.* Complete assembly of *Escherichia coli* sequence type 131 genomes using long reads demonstrates antibiotic resistance gene variation within diverse plasmid and chromosomal contexts. *mSphere*. <https://doi.org/10.1128/mSphere.00130-19> (2019).
17. Carattoli, A. Resistance plasmid families in Enterobacteriaceae. *Antimicrob. Agents Chemother.* **53**, 2227–2238. <https://doi.org/10.1128/AAC.01707-08> (2009).
18. Liao, X. P. *et al.* Characterization of CTX-M-14-producing *Escherichia coli* from food-producing animals. *Front Microbiol* **6**, 1136. <https://doi.org/10.3389/fmicb.2015.01136> (2015).
19. Stoesser, N. *et al.* Evolutionary history of the global emergence of the *Escherichia coli* epidemic clone ST131. *MBio* **7**, e02162. <https://doi.org/10.1128/mBio.02162-15> (2016).
20. Rogers, B. A., Sidjabat, H. E. & Paterson, D. L. *Escherichia coli* O25b-ST131: A pandemic, multiresistant, community-associated strain. *J. Antimicrob. Chemother.* **66**, 1–14. <https://doi.org/10.1093/jac/dkq415> (2011).
21. George, D. F. *et al.* Antibiotic resistance patterns of *Escherichia coli* isolates from hospitals in Kumasi, Ghana. *ISRN Microbiol.* **2012**, 658470. <https://doi.org/10.5402/2012/658470> (2012).
22. Seni, J. *et al.* The population structure of clinical extra-intestinal *Escherichia coli* in a teaching hospital from Nigeria. *Diagn. Microbiol. Infect. Dis.* **92**, 46–49. <https://doi.org/10.1016/j.diagmicrobio.2018.04.001> (2018).
23. Donkor, E. S., Tetteh-Quarcoo, P. B., Nartey, P. & Agyeman, I. O. Self-medication practices with antibiotics among tertiary level students in Accra, Ghana: A cross-sectional study. *Int. J. Environ. Res. Public Health* **9**, 3519–3529. <https://doi.org/10.3390/ijerp9103519> (2012).
24. Tagoe, D. N. A. & Attah, C. O. A Study of Antibiotic Use and Abuse in Ghana: a case study of the Cape Coast Metropolis. *The Internet Journal of Health.* **11**(2), <https://doi.org/10.5580/bec> (2010).
25. Labi, A. K. *et al.* Antibiotic prescribing in paediatric inpatients in Ghana: A multi-centre point prevalence survey. *BMC Pediatr.* **18**, 391. <https://doi.org/10.1186/s12887-018-1367-5> (2018).
26. Wang, J. *et al.* Molecular characterization of bla ESBL-harboring conjugative plasmids identified in multi-drug resistant *Escherichia coli* isolated from food-producing animals and healthy humans. *Front. Microbiol.* **4**, 188. <https://doi.org/10.3389/fmicb.2013.00188> (2013).
27. Seni, J., Peirano, G., Mshana, S. E., Pitout, J. D. D. & DeVinney, R. The importance of *Escherichia coli* clonal complex 10 and ST131 among Tanzanian patients on antimicrobial resistance surveillance programs. *Eur. J. Clin. Microbiol. Infect. Dis.* <https://doi.org/10.1007/s10096-021-04271-w> (2021).
28. Agyekum, A. *et al.* bla_{CTX-M-15} carried by IncF-type plasmids is the dominant ESBL gene in *Escherichia coli* and *Klebsiella pneumoniae* at a hospital in Ghana. *Diagn. Microbiol. Infect. Dis.* **84**, 328–333. <https://doi.org/10.1016/j.diagmicrobio.2015.12.010> (2016).
29. World Health Organization. Antimicrobial resistance: Global report on surveillance. *World Health Organization.* <http://apps.who.int/iris/handle/10665/112642>. (2014).
30. Bansal, S. & Tandon, V. Contribution of mutations in DNA gyrase and topoisomerase IV genes to ciprofloxacin resistance in *Escherichia coli* clinical isolates. *Int. J. Antimicrob. Agents* **37**, 253–255. <https://doi.org/10.1016/j.ijantimicag.2010.11.022> (2011).
31. Bidell, M. R., Palchak, M., Mohr, J. & Lodise, T. P. Fluoroquinolone and third-generation-cephalosporin resistance among hospitalized patients with urinary tract infections due to *Escherichia coli*: Do rates vary by hospital characteristics and geographic region?. *Antimicrob. Agents Chemother.* **60**, 3170–3173. <https://doi.org/10.1128/AAC.02505-15> (2016).
32. Wener, K. M., Schechner, V., Gold, H. S., Wright, S. B. & Carmeli, Y. Treatment with fluoroquinolones or with beta-lactam-beta-lactamase inhibitor combinations is a risk factor for isolation of extended-spectrum-beta-lactamase-producing *Klebsiella species* in hospitalized patients. *Antimicrob. Agents Chemother.* **54**, 2010–2016. <https://doi.org/10.1128/AAC.01131-09> (2010).
33. Price, L. B. *et al.* The epidemic of extended-spectrum-beta-lactamase-producing *Escherichia coli* ST131 is driven by a single highly pathogenic subclone, H30-Rx. *MBio* **4**, e00377–00313. <https://doi.org/10.1128/mBio.00377-13> (2013).
34. Mathers, A. J., Peirano, G. & Pitout, J. D. The role of epidemic resistance plasmids and international high-risk clones in the spread of multidrug-resistant Enterobacteriaceae. *Clin. Microbiol. Rev.* **28**, 565–591. <https://doi.org/10.1128/CMR.00116-14> (2015).
35. Oduro-Mensah, D. *et al.* Genetic characterization of TEM-type ESBL-associated antibacterial resistance in Enterobacteriaceae in a tertiary hospital in Ghana. *Ann. Clin. Microbiol. Antimicrob.* **15**, 29. <https://doi.org/10.1186/s12941-016-0144-2> (2016).
36. Aibinu, I., Odugbemi, T., Koenig, W. & Ghebremedhin, B. Sequence type ST131 and ST10 complex (ST617) predominant among CTX-M-15-producing *Escherichia coli* isolates from Nigeria. *Clin. Microbiol. Infect.* **18**, E49–51. <https://doi.org/10.1111/j.1469-0691.2011.03730.x> (2012).
37. Merino, I. *et al.* Emergence of ESBL-producing *Escherichia coli* ST131-C1-M27 clade colonizing patients in Europe. *J. Antimicrob. Chemother.* **73**, 2973–2980. <https://doi.org/10.1093/jac/dky296> (2018).
38. Adator, E. H. *et al.* Whole genome sequencing differentiates presumptive extended spectrum beta-lactamase producing *Escherichia coli* along segments of the one health continuum. *Microorganisms.* <https://doi.org/10.3390/microorganisms8030448> (2020).
39. Roer, L. *et al.* Sequence type 410 is causing new international high-risk clones. *mSphere*. <https://doi.org/10.1128/mSphere.00337-18> (2018).
40. Wu, W. *et al.* NDM Metallo-beta-lactamases and their bacterial producers in health care settings. *Clin. Microbiol. Rev.* <https://doi.org/10.1128/CMR.00115-18> (2019).
41. Bevan, E. R., Jones, A. M. & Hawkey, P. M. Global epidemiology of CTX-M beta-lactamases: Temporal and geographical shifts in genotype. *J. Antimicrob. Chemother.* **72**, 2145–2155. <https://doi.org/10.1093/jac/dkx146> (2017).
42. Falgenhauer, L. *et al.* Detection and characterization of ESBL-producing *Escherichia coli* from humans and poultry in Ghana. *Front. Microbiol.* **9**, 3358. <https://doi.org/10.3389/fmicb.2018.03358> (2018).
43. Doumith, M., Dhanji, H., Ellington, M. J., Hawkey, P. & Woodford, N. Characterization of plasmids encoding extended-spectrum beta-lactamases and their addiction systems circulating among *Escherichia coli* clinical isolates in the UK. *J. Antimicrob. Chemother.* **67**, 878–885. <https://doi.org/10.1093/jac/dkr553> (2012).
44. Rozwandowicz, M. *et al.* Plasmids carrying antimicrobial resistance genes in Enterobacteriaceae. *J. Antimicrob. Chemother.* **73**, 1121–1137. <https://doi.org/10.1093/jac/dkx488> (2018).
45. Ravi, A., Valdés-Varela, L., Gueimonde, M. & Rudi, K. Transmission and persistence of IncF conjugative plasmids in the gut microbiota of full-term infants. *FEMS Microbiol. Ecol.* <https://doi.org/10.1093/femsec/fix158> (2018).
46. Lyimo, B. *et al.* IncF Plasmids are commonly carried by antibiotic resistant *Escherichia coli* isolated from drinking water sources in northern Tanzania. *Int. J. Microbiol.* **2016**, 3103672. <https://doi.org/10.1155/2016/3103672> (2016).
47. Inwezerua, C. *et al.* Occurrence of extended-spectrum beta-lactamases in human and bovine isolates of *Escherichia coli* from Oyo state, Nigeria. *J. Infect. Dev. Ctries* **8**, 774–779. <https://doi.org/10.3855/jidc.3430> (2014).
48. Partridge, S. R., Zong, Z. & Iredell, J. R. Recombination in IS26 and Tn2 in the evolution of multiresistance regions carrying bla_{CTX-M-15} on conjugative IncF plasmids from *Escherichia coli*. *Antimicrob. Agents Chemother.* **55**, 4971–4978. <https://doi.org/10.1128/AAC.00025-11> (2011).
49. Ma, L., Siu, L. K. & Lu, P. L. Effect of spacer sequences between bla_(CTX-M) and ISEcp1 on bla_(CTX-M) expression. *J. Med. Microbiol.* **60**, 1787–1792. <https://doi.org/10.1099/jmm.0.033910-0> (2011).
50. Cantón, R. & Coque, T. M. The CTX-M beta-lactamase pandemic. *Curr. Opin. Microbiol.* **9**, 466–475. <https://doi.org/10.1016/j.mib.2006.08.011> (2006).

51. Lavollay, M. *et al.* Clonal dissemination of a CTX-M-15 beta-lactamase-producing *Escherichia coli* strain in the Paris area, Tunis, and Bangui. *Antimicrob. Agents Chemother.* **50**, 2433–2438. <https://doi.org/10.1128/AAC.00150-06> (2006).
52. Boyd, D. A. *et al.* Complete nucleotide sequence of a 92-kilobase plasmid harboring the CTX-M-15 extended-spectrum beta-lactamase involved in an outbreak in long-term-care facilities in Toronto, Canada. *Antimicrob. Agents Chemother.* **48**, 3758–3764. <https://doi.org/10.1128/AAC.48.10.3758-3764.2004> (2004).
53. Liu, L. *et al.* Genetic environment of β -lactamase genes of extended-spectrum β -lactamase-producing *Klebsiella pneumoniae* isolates from patients with lower respiratory tract infection in China. *Chin. Med. J. (Engl.)* **127**, 2445–2450 (2014).
54. Dallenne, C., Da Costa, A., Decré, D., Favier, C. & Arlet, G. Development of a set of multiplex PCR assays for the detection of genes encoding important beta-lactamases in Enterobacteriaceae. *J. Antimicrob. Chemother.* **65**, 490–495. <https://doi.org/10.1093/jac/dkp498> (2010).
55. Moghanni, M. *et al.* High prevalence of sequence type 131 isolates producing CTX-M-15 among extended-spectrum β -lactamase-producing *Escherichia coli* strains in northeast Iran. *J. Glob. Antimicrob. Resist.* **15**, 74–78. <https://doi.org/10.1016/j.jgar.2018.05.016> (2018).
56. Matsumura, Y. *et al.* Rapid identification of different *Escherichia coli* sequence type 131 clades. *Antimicrob. Agents Chemother.* <https://doi.org/10.1128/AAC.00179-17> (2017).
57. Seemann, T. *Snippy: Rapid Haploid Variant Calling and Core Genome Alignment*. <https://github.com/tseemann/snippy> (2007). Accessed Nov 2021.
58. Croucher, N. J. *et al.* Rapid phylogenetic analysis of large samples of recombinant bacterial whole genome sequences using Gubbins. *Nucleic Acids Res.* **43**, e15. <https://doi.org/10.1093/nar/gku1196> (2015).
59. Page, A. J. *et al.* SNPs-sites: rapid efficient extraction of SNPs from multi-FASTA alignments. *Microb. Genom.* **2**, e000056. <https://doi.org/10.1099/mgen.0.000056> (2016).
60. Nguyen, L. T., Schmidt, H. A., von Haeseler, A. & Minh, B. Q. IQ-TREE: A fast and effective stochastic algorithm for estimating maximum-likelihood phylogenies. *Mol. Biol. Evol.* **32**, 268–274. <https://doi.org/10.1093/molbev/msu300> (2015).
61. Page, A. J. *et al.* Roary: Rapid large-scale prokaryote pan genome analysis. *Bioinformatics* **31**, 3691–3693. <https://doi.org/10.1093/bioinformatics/btv421> (2015).
62. Decano, A. G. & Downing, T. An *Escherichia coli* ST131 pangenome atlas reveals population structure and evolution across 4,071 isolates. *Sci. Rep.* **9**, 17394. <https://doi.org/10.1038/s41598-019-54004-5> (2019).
63. Seemann, T. Prokka: rapid prokaryotic genome annotation. *Bioinformatics* **30**, 2068–2069. <https://doi.org/10.1093/bioinformatics/btu153> (2014).
64. Letunic, I. & Bork, P. Interactive tree of life (iTOL) v4: Recent updates and new developments. *Nucleic Acids Res.* **47**, W256–W259. <https://doi.org/10.1093/nar/gkz239> (2019).
65. Sullivan, M. J., Petty, N. K. & Beatson, S. A. Easyfig: A genome comparison visualizer. *Bioinformatics* **27**, 1009–1010. <https://doi.org/10.1093/bioinformatics/btr039> (2011).

Acknowledgements

Our utmost appreciation goes to the staff of Effia Nkwanta Regional Hospital and Tamale Teaching Hospital for their immense support.

Author contributions

A.Ab. and R.S. designed the experiments. S.M., W.S., A.Ay., and I.P. performed the experiments and analyzed the data. R.S., T.H., S.I., and T.S. organized the funding. A.Ab. and R.S. supervised the study. S.M. and R.S. wrote the original draft of the manuscript. All authors read and approved the final manuscript.

Funding

This research work was funded by the Japan Agency for Medical Research and Development (AMED, <http://www.amed.go.jp/en/>) under Grant Numbers JP19fm0108010 and 20wm0125007 (TH, TS, SI, RS), 20wm0225013 (TS, RS), and the Ohyama Health Foundation (RS). The funders had no role in the study design, data collection and analysis, interpretation of data, decision to publish, or preparation of the manuscript.

Competing interests

The authors declare no competing interests.

Additional information

Supplementary Information The online version contains supplementary material available at <https://doi.org/10.1038/s41598-022-05869-6>.

Correspondence and requests for materials should be addressed to A.A. or R.S.

Reprints and permissions information is available at www.nature.com/reprints.

Publisher's note Springer Nature remains neutral with regard to jurisdictional claims in published maps and institutional affiliations.



Open Access This article is licensed under a Creative Commons Attribution 4.0 International License, which permits use, sharing, adaptation, distribution and reproduction in any medium or format, as long as you give appropriate credit to the original author(s) and the source, provide a link to the Creative Commons licence, and indicate if changes were made. The images or other third party material in this article are included in the article's Creative Commons licence, unless indicated otherwise in a credit line to the material. If material is not included in the article's Creative Commons licence and your intended use is not permitted by statutory regulation or exceeds the permitted use, you will need to obtain permission directly from the copyright holder. To view a copy of this licence, visit <http://creativecommons.org/licenses/by/4.0/>.

© The Author(s) 2022