



Since January 2020 Elsevier has created a COVID-19 resource centre with free information in English and Mandarin on the novel coronavirus COVID-19. The COVID-19 resource centre is hosted on Elsevier Connect, the company's public news and information website.

Elsevier hereby grants permission to make all its COVID-19-related research that is available on the COVID-19 resource centre - including this research content - immediately available in PubMed Central and other publicly funded repositories, such as the WHO COVID database with rights for unrestricted research re-use and analyses in any form or by any means with acknowledgement of the original source. These permissions are granted for free by Elsevier for as long as the COVID-19 resource centre remains active.



A wastewater-based epidemiology tool for COVID-19 surveillance in Portugal

Sílvia Monteiro ^{a,*}, Daniela Rente ^a, Mónica V. Cunha ^{b,c}, Manuel Carmo Gomes ^d, Tiago A. Marques ^{e,f}, Artur B. Lourenço ^b, Eugénia Cardoso ^g, Pedro Álvaro ^g, Marco Silva ^h, Norberta Coelho ^h, João Vilaça ⁱ, Fátima Meireles ⁱ, Nuno Brôco ^j, Marta Carvalho ^j, Ricardo Santos ^a

^a Laboratório de Análises, Instituto Superior Técnico, Universidade de Lisboa, Lisbon, Portugal

^b Centre for Ecology, Evolution and Environmental Changes (cE3c), Faculdade de Ciências, Universidade de Lisboa, 1749-016 Lisboa, Portugal

^c Biosystems & Integrative Sciences Institute (BioISI), Faculdade de Ciências, Universidade de Lisboa, 1749-016 Lisboa, Portugal

^d Departamento de Biologia Vegetal, Faculdade de Ciências, Universidade de Lisboa, 1749-016 Lisboa, Portugal

^e Centre for Research into Ecological and Environmental Modelling, The Observatory, University of St Andrews, St Andrews KY16 9LZ, Scotland, United Kingdom

^f Centro de Estatística e Aplicações, Departamento de Biologia Ambiental, Faculdade de Ciências, Universidade de Lisboa, 1749-016 Lisboa, Portugal

^g Águas do Tejo Atlântico, Fábrica de Águas de Alcântara, Avenida de Ceuta, 1300-254 Lisboa, Portugal

^h Águas do Norte, Lugar de Gaído, 4755-045 Barcelos, Portugal

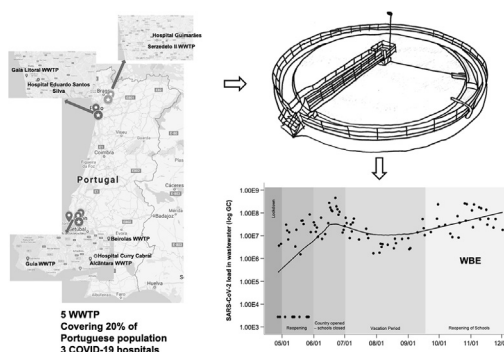
ⁱ SIMDOURO, ETAR de Gaia Litoral, 4400-356 Canidelo, Portugal

^j AdP VALOR, Serviços Ambientais, S.A., Rua Visconde de Seabra, 3, 1700-421 Lisboa, Portugal

HIGHLIGHTS

- SARS-CoV-2 monitored over 32-weeks encompassing different epidemiological stages.
- Five wastewater treatment plants, representing over two million people, were tested.
- Trends of SARS-CoV-2 in wastewater followed trends of daily new cases in Portugal.
- Sampling strategy may have a marked impact in the detection of SARS-CoV-2.
- Long-term potential of WBE as a complementary tool to clinical surveillance demonstrated.

GRAPHICAL ABSTRACT



ARTICLE INFO

Article history:

Received 28 July 2021

Received in revised form 6 September 2021

Accepted 6 September 2021

Available online 11 September 2021

Editor: Kevin V. Thomas

Keywords:

SARS-CoV-2

Wastewater-based epidemiology

ABSTRACT

The presence of severe acute respiratory syndrome coronavirus 2 (SARS-CoV-2) in wastewater produced interest in its use for sentinel surveillance at a community level and as a complementary approach to syndromic surveillance. With this work, we set the foundations for wastewater-based epidemiology (WBE) in Portugal by monitoring the trends of SARS-CoV-2 RNA circulation in the community, on a nationwide perspective during different epidemiological phases of the pandemic. The Charité assays (E_Sarbeco, RdRP, and N_Sarbeco) were applied to monitor, over 32-weeks (April to December 2020), the dynamics of SARS-CoV-2 RNA at the inlet of five wastewater treatment plants (WWTP), which together serve more than two million people in Portugal. Raw wastewater from three Coronavirus disease 2019 (COVID-19) reference hospitals was also analyzed during this period. In total, more than 600 samples were tested.

For the first weeks, detection of SARS-CoV-2 RNA was sporadic, with concentrations varying from 10^3 to 10^5 genome copies per liter (GC/L). Prevalence of SARS-CoV-2 RNA increased steeply by the end of May into late June,

* Corresponding author.

E-mail address: silvia.monteiro@tecnico.ulisboa.pt (S. Monteiro).

COVID-19
Hospital wastewater

mainly in Lisboa e Vale do Tejo region (LVT), during the reopening phase. After the summer, with the reopening of schools in mid-September and return to partial face-to-face work, a pronounced increase of SARS-CoV-2 RNA in wastewater was detected. In the LVT area, SARS-CoV-2 RNA load agreed with reported trends in hotspots of infection. Synchrony between trends of SARS-CoV-2 RNA in raw wastewater and daily new COVID-19 cases highlights the value of WBE as a surveillance tool, particularly after the phasing out of the epidemiological curve and when hotspots of disease re-emerge in the population which might be difficult to spot based solely on syndromic surveillance and contact tracing. This is the first study crossing several epidemiological stages highlighting the long-term use of WBE for SARS-CoV-2.

© 2021 Elsevier B.V. All rights reserved.

1. Introduction

Climate change, deforestation and population growth led to an increase in contact between humans and wildlife, which may cause inter-species transmission of infectious agents. Such conditions possibly resulted in the occurrence of previous outbreaks including the severe acute respiratory syndrome (SARS; 2002–2004) and the Middle East respiratory syndrome (MERS; 2012–present) outbreaks, all caused by coronavirus (CoV; SARS-CoV and MERS-CoV, respectively). Several authors that have addressed the environmental circulation of viruses had already highlighted the possible occurrence of a new pandemic caused by coronavirus (Wigginton et al., 2015; Santos and Monteiro, 2013).

Coronavirus disease 2019 (COVID-19) is caused by the severe acute respiratory syndrome coronavirus 2 (SARS-CoV-2), an enveloped, single-stranded RNA virus with a high infection rate. The first clinical cases in Portugal were reported on March 2, 2020, with the exponential phase having been reached on March 14, 2020 (RTP, 2020). The Portuguese government closed schools on March 16, 2020, and declared the emergency state on March 19, 2020, with the country's entry into the first national lockdown that lasted until May 2, 2020. Reopening occurred in three stages throughout the month of May, with full reopening in June 2020 except for schools that remained closed until the end of the academic year. In September, schools reopened, and partial face-to-face work returned, a steep increase in the number of cases was registered (DGS, 2020). As of December 2, 2020, 307,618 COVID-19 cases had been reported in Portugal, with 4724 deaths and 229,018 recovered patients (DGS, 2020).

Although COVID-19 clinical tests have been developed in record time, the disease spread, and community infection burden often outpaced the capacity for clinical testing. In addition, syndromic surveillance strongly depends on individual reporting and seriousness of clinical symptoms, and how this coincides with diseases known to circulate in the community (Mandl et al., 2004). Rapid approaches to determine the extent of virus spread in the population, ideally in near real-time, are thus needed to slow down transmission.

Wastewater-based epidemiology (WBE) has been applied since 2005 to trace pharmaceutical and illicit drug use in the community (Zuccato et al., 2005; Reddy, 2010; Singer et al., 2013; Choi et al., 2018). The usefulness and potential of wastewater as a surveillance system for pathogens has already been shown, namely under the global polio eradication initiative, the most successful example of environmental surveillance to date (Hovi et al., 2012; WHO, 2015; Koopmans et al., 2017).

Several advantages are associated with WBE; firstly, testing wastewater means testing thousands of potentially infected individuals at the same time, and with the potential to identify hotspots of infection prior to syndromic surveillance. Secondly, WBE can highlight trends in viruses shedding over time from symptomatic but also from asymptomatic, pre-symptomatic and post-symptomatic individuals.

Although transmitted mainly via respiratory droplets (Meselson, 2020), SARS-CoV-2 has been detected in the feces and urine of infected patients, regardless of disease severity or development of gastrointestinal illness (He et al., 2020; Pan et al., 2020; Wölfel et al., 2020; Young

et al., 2020). There is little indication that the viruses shed in the stools of infected patients, and therefore circulating in wastewater, are infectious (Wölfel et al., 2020; Zang et al., 2020). Even so, the presence of SARS-CoV-2 RNA in raw wastewater provides valuable information regarding the emergence, prevalence, epidemiology and decrease of SARS-CoV-2 presence in the community, helping the early identification of hotspots of infection.

To date, several authors reported the occurrence of SARS-CoV-2 RNA in wastewater samples (Ahmed et al., 2020; Medema et al., 2020; Randazzo et al., 2020; Sherchan et al., 2020) demonstrating the usefulness of WBE for SARS-CoV-2. Several iterations of the application of WBE for SARS-CoV-2 are currently implemented in many countries, such as the Netherlands, Scotland, and Spain among others. The European Commission (EC) has issued a recommendation for surveillance of SARS-CoV-2 and its variants in wastewater as a complementary and independent approach to clinical surveillance, and the member states that choose to accept the recommendation are expected to begin sampling and analysis in October 2021, with the results being reported directly to the EC (EC, 2021).

In this study, we report for the first time the results of SARS-CoV-2 RNA monitoring in raw wastewater in Portugal, in a study covering about 20% of the Portuguese population, corresponding to more than two million people, over a 32-weeks period. More than 600 samples were collected from five wastewater treatment plants (WWTP) and three COVID-19 hospitals in two regions of the country: a north cluster (four municipalities) and a south cluster in Lisboa e Vale do Tejo (LVT) (six municipalities).

To the best of our knowledge, this is the first study jointly evaluating the presence of SARS-CoV-2 RNA in raw wastewater from WWTP and COVID-19 hospitals. Altogether, in contrast with the already published studies that only looked at the early stages of the pandemic, and by encompassing several distinct epidemiological stages of this disease, this study demonstrates the long-term usefulness of using WBE for SARS-CoV-2 and potential long-term application to future health crisis.

2. Materials and methods

2.1. Clinical surveillance data

Clinical surveillance data were obtained from the Reports from the Portuguese Health Authority (DGS, 2020). Data from clinical surveillance for each municipality were presented daily in the reports from the Health Authority, being provided on a weekly basis after July 2020.

2.2. Porcine epidemic diarrhea virus (PEDV) strain and cell lines

Porcine epidemic diarrhea virus (PEDV) strain CV777 (kindly provided by Dr. Gloria Sanchez, IATA-CSIC) is an enveloped virus from the genus *Alphacoronavirus* and member of the *Coronaviridae* family, responsible for the porcine epidemic diarrhea. PEDV was propagated in Vero cell line (ATCC CCL-81, LGC Standards). Briefly, Vero cells were grown in Dulbecco's Modified Eagle's Medium (DMEM; Gibco), supplemented with 100 units/mL of penicillin (Lonza), 100 units/mL of streptomycin (Lonza), and 10% heat-inactivated fetal bovine serum

(Biological Industries). Cells were cultured in T175 flasks at $37 (\pm 1) ^\circ\text{C}$ under 5% CO_2 . For infection with PEDV, cells were grown in T25 flasks and inoculated with 100 μL of viral stock. At 2 h post infection, DMEM supplemented with 0.3% tryptose phosphate broth, 100 units/mL of penicillin (Lonza), 100 units/mL of streptomycin (Lonza), and 10 $\mu\text{g}/\mu\text{L}$ trypsin, was added to the flasks. Flasks were then incubated at $37 (\pm 1) ^\circ\text{C}$ in 5% CO_2 for 4 days. PEDV were recovered following three cycles of freeze/thawing and centrifugation at 1,100 $\times g$ for 10 min. Quantification was performed by RT-dPCR as described on Section 2.5 using the primers and probes from Table 1 (Zhou et al., 2017), following nucleic acid extraction as described on Section 2.4. After absolute quantification by RT-dPCR (as described below), a stock solution was prepared in DNase/RNase free water to obtain a PEDV final concentration of $1.21 \times 10^4 \text{ GC/L}$ in wastewater. The same stock was used in all experiments described below.

2.3. Absolute quantification by RT-dPCR

RT-dPCR was used to determine the exact concentration of PEDV. PEDV was amplified using the AgPath-ID One-Step RT-PCR kit (Thermo Fischer Scientific) with the set of primers and probes described on Table 1 (Zhou et al., 2017). The 15 μL reaction mixture consisted of 7.5 μL of $2\times$ RT-PCR buffer, 0.6 μL of $25\times$ RT-PCR enzyme mix, 800 nM of each primer, 200 nM of probe, 3.63 μL RNase/DNase-free water, and 3 μL of DNA (diluted 4-, 5-, 6- fold). The reaction mixture was then spread over the QuantStudio 3D Digital PCR chip (Thermo Fischer Scientific) and the chips transferred to the QuantStudio 3D Digital PCR thermal cycler. Amplification was performed as follows: PEDV: 10 min at $45 ^\circ\text{C}$, 10 min at $96 ^\circ\text{C}$, 39 cycles of 2 min at $60 ^\circ\text{C}$ and 30 s at $98 ^\circ\text{C}$, and a final elongation step for 2 min at $60 ^\circ\text{C}$. Reactions were performed in duplicate, and a non-template control (NTC) was included in each run.

2.4. Sampling sites and sample collection

Raw wastewater samples ($n = 404$) were collected between April 27, 2020, and December 2, 2020, from five WWTP located in the North (Gaia Litoral (GA) and Serzedelo II (SE)) and in LVT (Alcântara (AL), Beirolas (BE), and Guia (GU)) (Fig. S1) of Portugal. Further information about these WWTP catchments is provided in Table S1. Sampling took place for 102 days, covering 220 of calendar days in total.

Raw wastewater from three reference COVID-19 hospitals (Hospital Curry Cabral (HCC), Lisbon; Hospital Sra. Oliveira (HSO), Guimarães (North); and Hospital Santos Silva (HSS), Vila Gaia (North); $n = 204$), in the catchment area of the WWTP, was also sampled.

Twenty-four-hour composite samples were collected using automated samplers (ISCO, US), except for HSO and HSS, where due to

logistical issues only grab samples were taken. Samples were transported refrigerated to the laboratory, within 8 h of collection and processed immediately upon arrival to the laboratory.

2.5. Processing of raw wastewater

Upon arrival to the laboratory, 1-L of raw wastewater from WWTP and COVID-19 hospitals was concentrated using hollow-fiber filters Inuvai R180 (molecular weight cut-off $\leq 18.8 \text{ kDa}$; Inuvai, a division of Fresenius Medical Care, Germany). A stock of PEDV was added to the samples to a final concentration of $1.21 \times 10^4 \text{ GC/L}$ (quantified as described above). Samples were eluted in 300 mL of $1\times$ PBS containing 0.01% sodium polyphosphate (NaPP) and 0.01 Tween 80/0.001% anti-foam and precipitated overnight with 20% polyethylene glycol (PEG) 8000. Samples were then centrifuged at 10000 $\times g$ for 30 min and resuspended in 5 mL $1\times$ PBS, pH 7.4 (Blanco et al., 2019). Samples were kept at $(-80 \pm 10) ^\circ\text{C}$ until further processing. Recovery efficiency varied between 40 and 82%, at an average of $61\% (\pm 16)$.

2.6. Viral RNA extraction, detection, and quantification

Viral RNA was extracted from 220 μL of concentrated samples using the QIAamp FAST DNA Stool Mini kit (QIAGEN, Germany), according to the manufacturer's instructions. The RNA was recovered in a final volume of 100 μL .

Primers and probes used in this study are presented in Table 1. The recovery efficiency for RNA extraction was performed using murine norovirus (MNV), which was added to the concentrates as an extraction control. MNV RNA was detected and quantified using the assay described by Baert et al., 2008. SARS-CoV-2 RNA was detected using the Charité assays: the E_Sarbeco, targeting the envelope protein gene, the RdRp that targets the RNA-dependent RNA polymerase gene and the N_Sarbeco, which targets the nucleoprotein (Corman et al., 2020).

One-step RT-qPCR assays (AgPath-ID™ One-Step RT-PCR, Thermo Scientific, USA) was used for the quantitative detection of SARS-CoV-2, PEDV, and MNV. For the specific detection and quantification of viral RNA, 5 μL of 4-fold and 10-fold dilutions of each viral RNA extract were also assayed in parallel with crude extracts; dilutions were meant to overcome amplification inhibition due to the complex nature of the samples. Cycle Threshold differences (ΔCt) ≥ 2.50 and 3.50 between crude extracts and 4-fold and 10-fold dilutions, respectively, were considered amplification inhibition free.

The final volume of reaction mixture was 25 μL , composed of 800 nM of each primer, 200 nM of probe and 5 μL of extracted RNA. RT-qPCR reactions were carried out at $45 ^\circ\text{C}$ for 10 min, $95 ^\circ\text{C}$ for 10 min, followed by 45 cycles of amplification at $95 ^\circ\text{C}$ for 15 s and $58 ^\circ\text{C}$ for 45 s for SARS-CoV-2 and $60 ^\circ\text{C}$ for 45 s for PEDV and MNV. RT-qPCR was performed on

Table 1
Primers and probes used in this study.

| Assay | Sequence (5' - 3') ^a | Length (bp) | Location in SARS-CoV-2 genome (bp) |
|-----------------------|-------------------------------------------------------------------------------------------------------------------------------------------------------------------------------------------|-------------|------------------------------------|
| MNV | F: CACGCCACGATCTGTTCTG R: GCGCTGCGCCATCACTC | 108 | 4972–5080 |
| PEDV | P: 6FAM-CGCTTTGGAACAATG-MGB F: CAGGACACATTCTTGGTGGTCTT R: CAAGCAATGTACCACTAAGGAGTGT P: FAM-ACGCGCTTCTCACTAC-MGB | 140 | 26,010 - 26,149 |
| SARS-CoV-2: E_Sarbeco | F: ACAGGTACGTTAATAGTTAATAGCGT R: ATATTGCAGCAGTACGCACACA | 112 | 26,141–26,253 |
| SARS-CoV-2: RdRp | P: 6FAM-ACACTAGCCATCCTTACTGCGCTTCG-BHQ F: GTGARATGGTCATGTGTGGCGG R: CARATGTTAAASACACTATTAGCATA P1: 6FAM-CCAGGTGGWACRTCATCMGGTGATGC-BHQ P2: 6FAM-CAGGTGGAACCTCATCAGGAGATGC-BHQ | 99 | 15,361–15,460 |
| SARS-CoV-2: N_Sarbeco | F: CACATTGGCACCCGCAATC R: GAGGAACGAGAAGAGGCTTG P: 6FAM-ACTTCCTCAAGGAACAACATTGCCA-BHQ | 127 | 28,555–28,682 |

^a W is A/T; R is G/A; M is A/C; S is G/C. FAM: 6-carboxyfluorescein; MGB: minor groove binder; BHQ: blackhole quencher.

an Applied Biosystems 7300 Real-Time PCR System (Applied Biosystems, US). Reactions were considered positive only if the cycle threshold was below 40 cycles (Medema et al., 2020; Wu et al., 2020a). Quantification of E_Sarbeco and RdRp assays was performed through calibration curves using 10-fold dilutions of nCoV-ALL-Control plasmid (Eurofins Genomics, Germany), ranging from 1.94×10^6 and 1.00×10^6 GC per reaction respectively. Quantification of N_Sarbeco assay was performed using 2-fold and 10-fold dilutions (ranging between 2.00 and 2.00×10^4 GC per reaction) of the Amplirun SARS-CoV-2 RNA control (Vircell, Spain). Negative controls (extraction and RT-qPCR assay) were also performed using DNase/RNase free distilled water, following the same conditions as the samples. The extraction efficiency using MNV as proxy averaged 70% ($\pm 19\%$).

2.7. SARS-CoV-2 RNA load estimates standardized to population

Standardization of SARS-CoV-2 RNA concentration to population and WWTP for each sampling date was performed in accordance with Eq. (1) (Gonzalez et al., 2020). For this calculation only the results from E_Sarbeco assay were used since it was the most sensitive assay.

$$L_{WWTP} = \frac{C_{WWTP} \times V \times f}{P} \quad (1)$$

where:

L_{WWTP} is SARS-CoV-2 RNA load in the WWTP standardized to the population (GC per person per day in the catchment).

C_{WWTP} is the SARS-CoV-2 RNA concentration in samples yielded by the E_Sarbeco assay (GC/L).

V is the average daily flow of wastewater in the WWTP during the sampling day (m^3/day).

f is the conversion factor between L and m^3 .

P is the estimated population within the WWTP catchment.

2.8. Data analysis

All data analysis was done with SPSS version 26 (IBM Corporation, US). For statistical analysis, all RT-qPCR below the limit of detection (LOD) were substituted by the LOD with subsequent \log_{10} transformation. The LOD was 3.99, 5.52 and 5.74 GC per reaction for E_Sarbeco, RdRp and N_Sarbeco assays, respectively. Kruskal-Wallis test (KW statistics) was conducted to compare differences in the total number of SARS-CoV-2 RNA detection for each assay, and pairwise comparison was performed with Dunn's test. Mann-Whitney test was used to determine the impact of sampling type (composite *versus* grab samples collected at hospitals). Spearman rank order correlation was used for calculation of correlation coefficients between the concentrations of SARS-CoV-2 RNA obtained by the three assays and between the number of hospitalized COVID-19 patients and the concentration of SARS-CoV-2 RNA at each hospital.

3. Results and discussion

3.1. Performance of Charité assays on SARS-CoV-2 quantification in wastewater

The first RT-qPCR assays for the detection of SARS-CoV-2 were designed at the beginning of the pandemic following the disclosure of the first SARS-CoV-2 sequence, the designated Charité assays: E_Sarbeco, RdRp (P1 and P2) and N_Sarbeco (Corman et al., 2020). Environmental studies generally rely on the use of a single assay to determine the presence of a target (La Rosa and Muscillo, 2013). However, due to sensitivity and specificity issues, WBE studies for SARS-CoV-2 have included multiple gene targets, including the Charité (Wurtzer et al., 2020; Medema et al., 2020; Chavarria-Miró et al., 2021) and the

CDC assays (Ahmed et al., 2020; Medema et al., 2020; Randazzo et al., 2020). In the 32-week study reported here, the three assays were compared with respect to detection rates and concentrations to determine the need to run all three assays in future WBE studies.

Detections of SARS-CoV-2 RNA were scarcer during the lockdown and reopening months (April-May), with discrepant results among the assays (Fig. 1A). The results of SARS-CoV-2 RNA prevalence for the three assays ($n = 404$), including below and above LOD, coincided in 193 samples. This number dropped to 80 samples when considering just samples above the LoD. In 116 samples, detection occurred for two assays and in 95 samples only one assay was detected.

Agreement between assays increased and became more consistent as the total number of detections increased, particularly following the end of the lockdown (Fig. 1A, B). The E_Sarbeco assay was detected more frequently, with consistent detections over the 32-week period of sampling. A total of 290, 177, and 100 samples tested positive for E_Sarbeco, RdRp, and N_Sarbeco, respectively. The detection rates for all assays showed statistically significant differences (KW = 181.45, degrees of freedom = 2, $p < 0.001$). This result is in line with the original publication that indicated that E_Sarbeco and RdRp assays were more sensitive than N_Sarbeco assay (Corman et al., 2020). There was also statistical difference in the number of detections in the pairwise comparison between individual assays ($p < 0.001$, for all assays). The number of detections for N_Sarbeco assay was significantly lower than for the other two assays, possibly due to the higher limit of detection determined for this assay or possible loss of RNA integrity (Philo et al., 2020).

The positivity rates for RdRp and N_Sarbeco assays increased with increasing concentrations yielded by the E_Sarbeco assay. At concentrations between 10^2 and 10^4 GC/L, the positivity rate was 20% and 6% for the RdRp and N_Sarbeco assays, respectively. For E_Sarbeco assay concentrations above 10^4 GC/L, the positivity rates increased to 77% for the RdRp assay and 45% for the N_Sarbeco assay (Fig. S2).

The concentration of N_Sarbeco *versus* the other two assays in raw wastewater showed only moderate correlation (Spearman rank order correlation $r = 0.50$ for N_Sarbeco vs. RdRp; $r = 0.56$ for N_Sarbeco vs E_Sarbeco; $p < 0.01$, $n = 404$). The correlation between E_Sarbeco and RdRp concentration was significant ($r = 0.74$, $p < 0.01$, $n = 404$) (Fig. S3). Such figure facilitates the comparison of the distribution of positive and negative results for each pair of assays.

The discrepancies observed among E_Sarbeco, RdRp and N_Sarbeco assays agreed with previous reports, not only using the Charité assays but also the CDC protocol (Chavarria-Miró et al., 2021; Corman et al., 2020; Medema et al., 2020; Randazzo et al., 2020; Westhaus et al., 2020).

3.2. Detection of SARS-CoV-2 RNA in hospital wastewater samples

A total of 204 COVID-19 hospital wastewaters have been sampled in the 32-week study period and evaluated for the presence of SARS-CoV-2 RNA. Ninety-seven samples were positive for at least one SARS-CoV-2 assay (97/204; 48%), at concentrations ranging from 10^3 to 10^6 GC/L (Fig. S4). The percentage of positive samples varied from 24% (HSS) to 85% (HCC). The Cq values varied between 26.36 and 38.43 for the E_Sarbeco assay, with agreement in detection for the three assays in 62% of the samples (including samples below the LoD) and in 21% of the samples considering just SARS-CoV-2 RNA positive samples ($n = 98$). Although highly relevant, the number of studies reporting the specific detection of this virus in hospital wastewater is very limited (J. Wang et al., 2020; D. Zhang et al., 2020; Gonçalves et al., 2021). Although no quantification was made, J. Wang et al. (2020) and Gonçalves et al. (2021) reported similar Ct values to those obtained in our study. Detection frequency of SARS-CoV-2 RNA in hospital wastewater increased by the end of the study, when the number of cases in Portugal increased steeply and a high number of hospital beds were being occupied by COVID-19 patients (Fig. 2). From the end of the

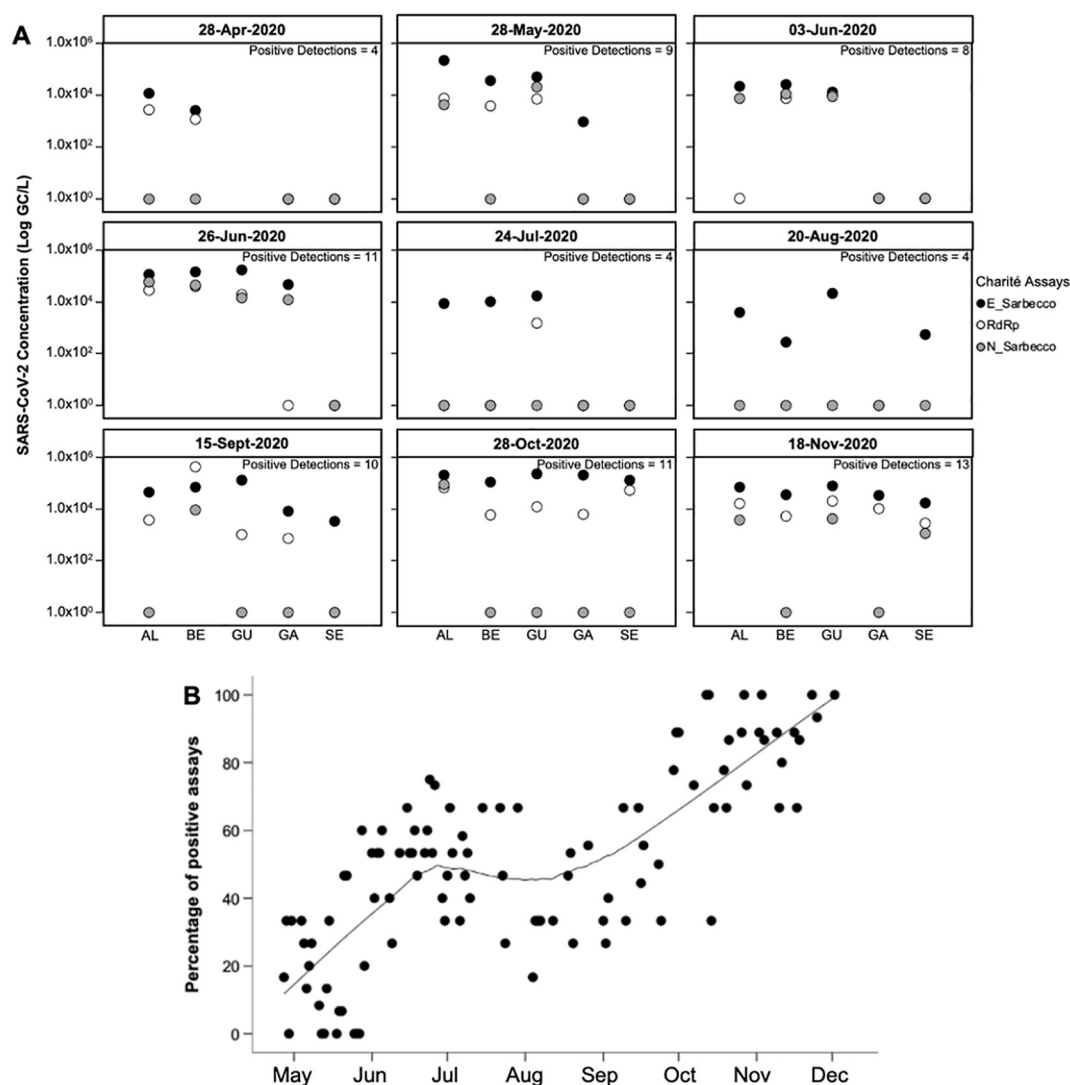


Fig. 1. SARS-CoV-2 RNA concentration estimated with Charité assays in selected sampling dates. The concentrations in each WWTP, in selected sampling dates, are depicted on the x axis of the figure. The dates were chosen at (roughly) monthly intervals, starting from April 28, with exception of June 3, which was added because it represented one of the first dates following the complete reopening of the country (A); epidemiological phase (EPI) I: emergency state; EPI II: calamity state; EPI III: contingency and alert state; EPI IV: emergency state. Percentage of positive detection assays across the study period. Obtained with the 3 Charité assays. The trendline was drawn with LOWESS smoothing (B).

lockdown to schools reopening and return to partial face-to-face work (April through mid-September), the number of hospitalized COVID-19 cases decrease from an average of 60 to 3 in HSS and from 73 to 5 in HSO, increasing to 115 and 162 in November, respectively. As for HCC, the monthly average number of hospitalized COVID-19 cases remained stable from April to July (average ranging between 48 and 61 in April and June, respectively), decreasing during the month of August (30) only to increase again in September. By the end of the sampling period, the average number of hospitalized COVID-19 cases in HCC increased to 114.

Correlation analysis was used to investigate the quantitative relation of SARS-CoV-2 RNA concentration to the number of hospitalized COVID-19 cases in each hospital. No correlation was found in HCC and only moderate association was obtained for the other two hospitals (Spearman rank order correlation $r = 0.57$ for HSS and $r = 0.60$ for HSO; all $p < 0.01$). During the phase with lower number of hospitalized COVID-19 cases at HSS, most of the samples collected were below the LOD, a similar result to that observed in HSO hospital (Fig. 2). On the other hand, SARS-CoV-2 RNA detection at HCC was consistent throughout the study. Sporadic detection of SARS-CoV-2

RNA during this phase could be attributed not only to the low number of hospitalized COVID-19 patients but also to the different sampling strategy. While HCC samples were composite, grab samples were taken at the other two hospitals. Statistically significant differences ($p < 0.001$; Mann-Whitney U test) were determined between composite and grab samples. Composite sampling provides a better representation of a heterogeneous sample than grab samples tested separately as the variance between samples decreases and the analytical results reflect more thoroughly the real composition of the sample. Automated systems (composite sampling) are commonly used for chemical analysis of water in industrial and public health applications (U.S. Geological Survey, 2006, 2010; Baird et al., 2017). Composite sampling has also been widely used to analyze trace contaminants such as mycotoxins in food and to determine microbial populations in soil and water (Jarvis, 2007; Cornman et al., 2018). However, for quantification purposes, composite sampling has not been routinely applied in microbiological analysis of water due to a possible dilution effect. This paradigm has shifted with SARS-CoV-2, with this respiratory virus being found only in approximately 50% of the stools of infected patients at varying concentrations (10^2

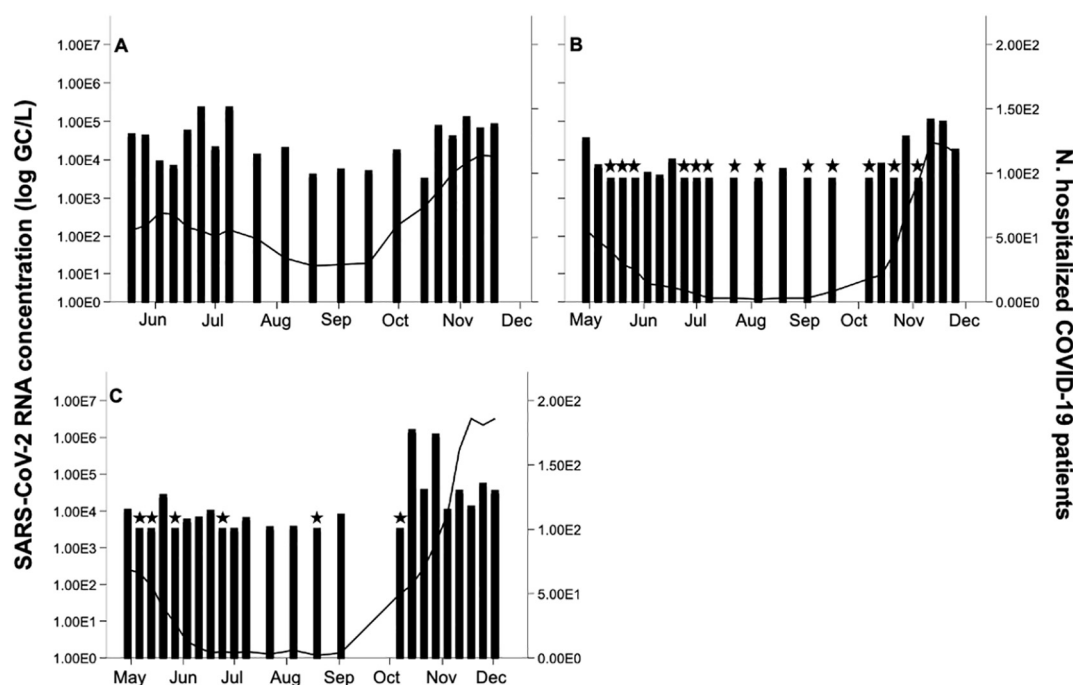


Fig. 2. Gene fragment concentration in hospital wastewater (bars), and the number of hospitalized COVID-19 cases (line) in the three hospitals. HCC (A); HSS (B); HSO (C). ★ Indicates values below the LoD for E_Sarbeco assay. Values represented in the figures.

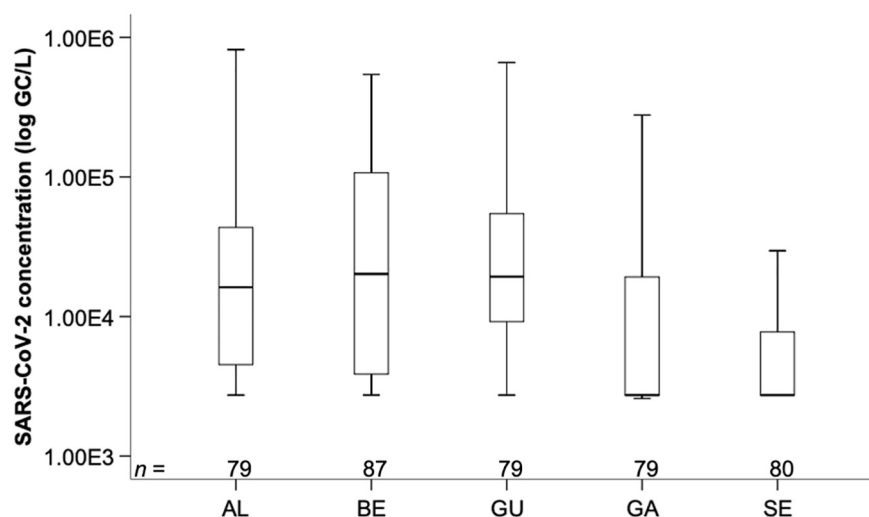


Fig. 3. SARS-CoV-2 concentration in the tested WWTP. AL- Alcântara; BE – Beirolas; GU – Guia; GA – Gaia Litoral; SE – Serzedelo. Boxes, 25th and 75th percentile; lines within the boxes, median; whiskers, 10th and 90th percentile, respectively. n, number of samples in each category.

to 10^8 per gram of stool) (Lescure et al., 2020; Pan et al., 2020; Wölfel et al., 2020; Wu et al., 2020b; Xu et al., 2020). Even if composite sampling is not paramount in WWTP settings, in single, point locations (such as hospital wastewaters) it may have a deeper impact with the results from this study corroborating the initial hypothesis, as a lower percentage of positive samples were obtained for the hospitals where grab samples were taken.

3.3. Temporal dynamics of SARS-CoV-2 RNA in raw wastewater

A total of 404 raw wastewater were collected between April 27 and December 2, 2020 and monitored for the presence of SARS-CoV-2 RNA. Concentration in positive samples, for E_Sarbeco assay, varied generally between 10^3 and 10^5 GC/L (Fig. 3).

Table 2 shows SARS-CoV-2 RNA concentrations and percentage of positive samples discriminated by WWTP. The prevalence of SARS-

Table 2
SARS-CoV-2 RNA concentration and percentage of positive samples in the overall study and in each WWTP.

| Sampling location | % Positive samples | SARS-CoV-2 RNA concentration variation (GC/L) |
|-------------------|--------------------|-----------------------------------------------|
| All WWTP | 72 (291/404) | 3.13×10^3 – 8.95×10^5 |
| AL | 82 (65/79) | 3.86×10^3 – 8.17×10^5 |
| BE | 85 (74/87) | 3.13×10^3 – 5.43×10^5 |
| GU | 85 (67/79) | 3.41×10^3 – 8.95×10^5 |
| GA | 56 (44/79) | 3.30×10^3 – 3.93×10^5 |
| SE | 51 (41/80) | 3.29×10^3 – 3.20×10^5 |

CoV-2 RNA varied between 51% in SE and 85% in BE and GU, with WWTP located in LVT conveying the highest number of positive detections.

The concentrations found in this study are in line with those documented in the US, and The Netherlands (Gonzalez et al., 2020; Medema et al., 2020; Sherchan et al., 2020). A study conducted at the early stages of the pandemic in the Metropolitan area of Barcelona has shown concentrations, as determined by the E_Sarbeco assay, in the same range as in our study (Chavarria-Miró et al., 2021). Flood et al. (2021) have determined SARS-CoV-2 RNA in raw wastewater at an average concentration of 8.53×10^5 GC/L, when using the E_Sarbeco assay. Wurtzer et al. (2020) detected SARS-CoV-2 RNA, using the E_Sarbeco assay, in concentrations up to approximately 2.5×10^6 GC/L, with the number of cases reaching the highest number at more than 5000 daily cases (ECDC, 2020). Nonetheless, studies developed in Spain documented concentrations at least two orders of magnitude superior to the mean concentrations observed in this study (Randazzo et al., 2020). The differences found between studies may result from a multitude of factors, including disease prevalence, and variability in the workflows including detection assays (Gonzalez et al., 2020).

3.4. Regional distribution of SARS-CoV-2 RNA concentration

This study was conducted over a period of 32-weeks (eight months), comprising the end of lockdown (April) and consecutive reopening stages (May), full reopening with online classes for students and partial face-to-face work (June), the vacation period (July and August), schools

reopening and return to partial face-to-face work (mid-September) (Fig. S5). The new number of reported cases decreased sharply from April (mean, 570) to May (mean, 249), increasing again in June (mean, 325), according to Reports from the Portuguese Health Authority (DGS, 2020). The average number of new cases decreased in July (mean, 286) and August (mean, 224) only to increase again in September (mean, 605), October (mean, 2192) and November (5058).

Fig. 4 shows the load of SARS-CoV-2 RNA, by date, normalized to population in the service area of each WWTP. SARS-CoV-2 RNA detection in WWTP for the LVT region showed lower percentages of detection during April-May, increase in the frequency of detection in June, decrease for the months of July, August and mid-September, and a steep increase from mid-September onwards (Fig. S6). The viral load in the LVT region in this region followed a similar trend to that of the prevalence of the virus. Nonetheless, the detection of SARS-CoV-2 RNA in WWTP from LVT region remained high after the end of lockdown.

SARS-CoV-2 RNA load in the north region of the country (GA and SE) remained stable during the period comprising April to mid-September, sharply increasing afterwards following the trends observed in the syndromic surveillance (Fig. S6). Occasional detections were observed during the lockdown and following periods with a gradual increase in the frequency of detection until mid-September. Upon school reopening, and return to partial face-to-face work, a steep increase occurred in the SARS-CoV-2 RNA load in all locations. During pre-lockdown and lockdown, the North region was the most affected by COVID-19, a pattern that shifted following the reopening with the

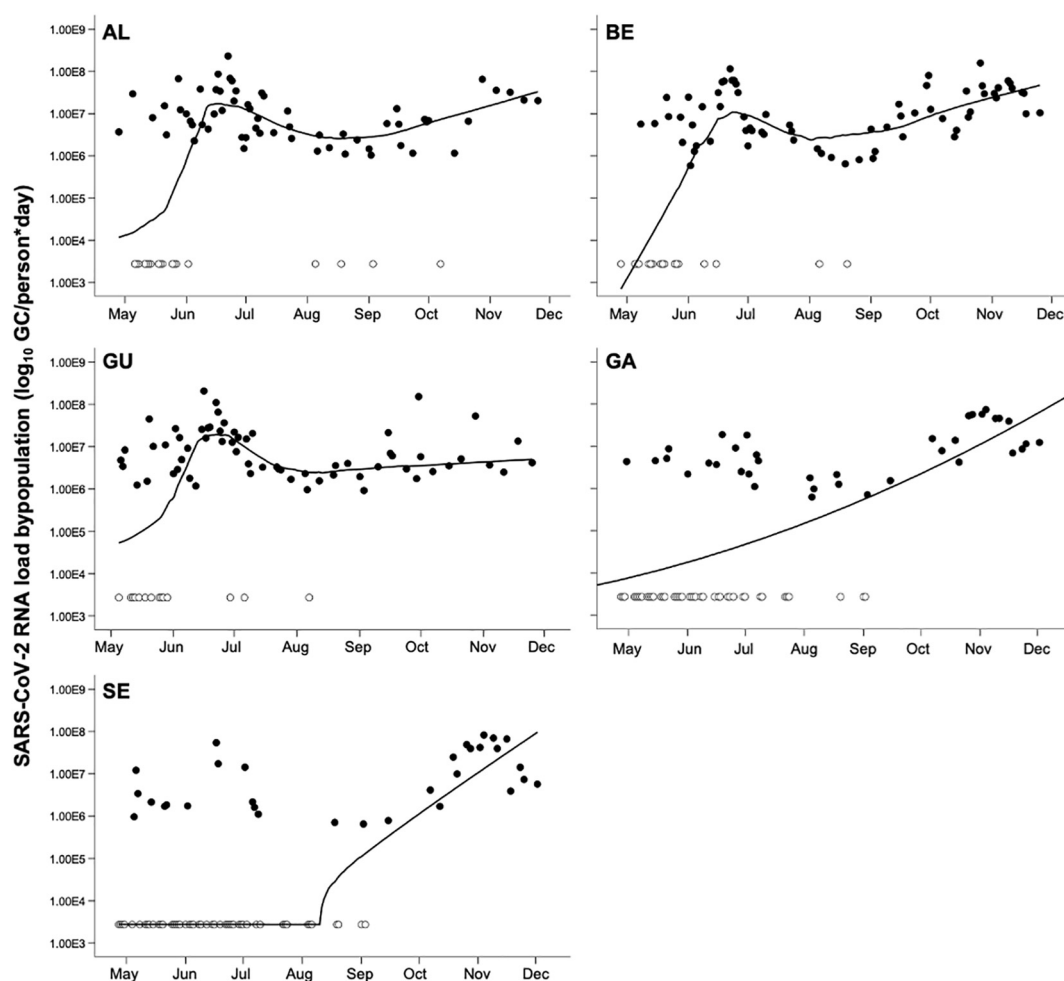


Fig. 4. SARS-CoV-2 RNA load, by date, normalized to the population in the service area of each WWTP. Black dots indicate samples above the LoD, white dots represent samples below the LoD (with LOWESS smoothing).

great Lisbon area becoming the main contributor to the increase in the number of COVID-19 cases observed throughout May and June (Fig. S7). Altogether, the cumulative number of COVID-19 cases increased at a slow pace from the end of April until the beginning of October, with a noticeable increase at this stage mainly due to the new spike in cases registered in the North region. Overall, and until October 25, 2020, Lisbon and Sintra, both in LVT, had the highest number of confirmed COVID-19 cases (9202 and 7454, respectively), followed by Amadora, Loures, (3722, and 4164, respectively), also in the LVT region. In the North region, Vila Nova de Gaia had the highest number of confirmed cases (3246).

Data from Fig. 4 can be used for comparison with existing outbreaks reported by the health department. For instance, the increase in the detection of SARS-CoV-2 RNA in the BE service area documented during June was likely caused by outbreaks in Sacavém-Prior Velho, Camarate-Unhos-Apelação and Santa Clara civil parishes. Such projection can also show trends in viruses spread over time within localized populations, not only from symptomatic but also from asymptomatic, pre-symptomatic and post-symptomatic. Such representation shows that although the number of clinically tested cases in the population was more consistent, the viral concentration remained mostly heterogeneous with a vast influence from localized hotspots of infection.

Fig. 5 illustrates the combined loads of SARS-CoV-2 RNA, over time, in the chosen WWTP service areas. The concentrations of SARS-CoV-2

RNA (E.Sarbecco) from all five WWTP were merged daily to obtain an estimation of the concentrations in the regions tested.

The trend combined for the regions was equivalent to the trends observed in the clinical surveillance. It is evident from the present data that the reopening phase, in May, corresponded to an increment in the viral load, which is in accordance with the increase observed, in Portugal, in the number of new daily COVID-19 reported cases. Following this phase, the country entered the summer vacation period, with a slight decrease in viral load. The third and final stage of viral loading, in this study, occurred after the reopening of schools and return to partial face-to-face work. At this stage, viral loading increased gradually in parallel with the rise of new daily COVID-19 cases in the country.

The pattern similarity between the number of new COVID-19 cases reported daily, provided by clinical testing, and the load of SARS-CoV-2 RNA in raw wastewater further proves the usefulness of WBE for SARS-CoV-2, as well as potential future pandemic. Such representation (Fig. 5B), could therefore be integrated with syndromic surveillance data, as an early-warning system for the increase of the number of infected individuals within the community. Although the number of cases peaked during the month of November, SARS-CoV-2 RNA loading did not differ acutely between the months of June and October–November, despite the steep difference in the number of cases. This may have resulted from an increase in the testing capacity/availability of tests during the latter phase (Fig. S8). Such result further highlights

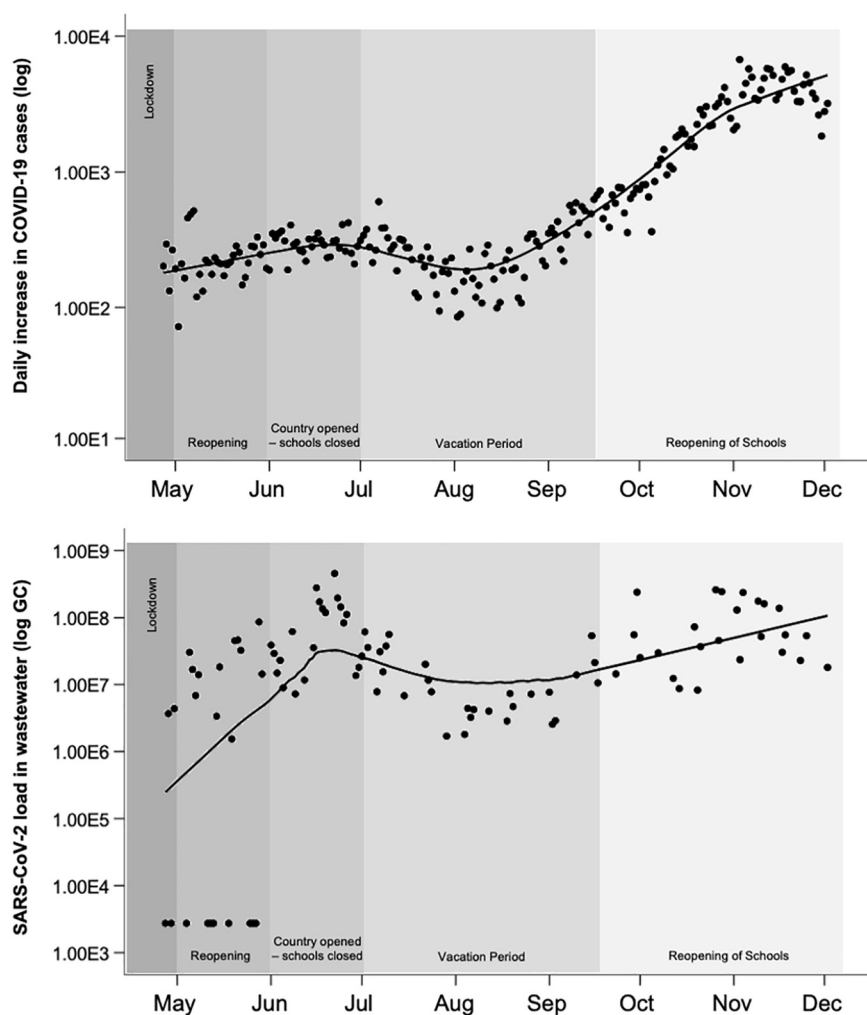


Fig. 5. Daily increase in COVID-19 cases (A) (DCS, 2020) and combined SARS-CoV-2 concentration in wastewater for the regions under study over the 32-week period with LOWESS smoothing (B).

the usefulness of WBE for SARS-CoV-2, particularly in locations where testing is reduced or even unavailable.

Results from individual testing should be the most accurate measure of transmission and disease occurrence in the population, but the scale of testing (spatial and temporal) necessary to have accurate information and to be able to follow the spread of the virus in the population is unrealistic and economically impracticable for most countries. Additionally, continuous testing indispensable for the effective control of the disease is economically and timely challenging. Wastewater monitoring represents testing thousands of infected people simultaneously rather than a single person and is complementary to syndromic surveillance of COVID-19. The knowledge provided by the analysis of wastewater can, therefore, be employed as an impartial surveillance tool, reflecting more closely the health of a population. Moreover, wastewater may also allow for a precocious detection of new SARS-CoV-2 variants circulating in the community (Crits-Christoph et al., 2021; Jahn et al., 2021). WBE for SARS-CoV-2, and future emerging pathogens, has the potential to target the need for more localized clinical testing, facilitating the detection of occasional hotspots of infection likely to occur as this or other pandemics take place. It is scalable, with a fast turnaround, and economically competitive. WBE could be useful in school or nursing home settings, to evaluate the presence and spread of the viruses instead of testing hundreds or thousands of individuals. Additionally, WBE can be a very powerful tool in countries with limited resources, to inform decisions and in aiding with policy making.

4. Conclusion

- SARS-CoV-2 RNA was detected in raw wastewater of all five studied WWTP at concentrations similar to those reported in other studies. Data reflected the different epidemiological stages, including surges and decreases, observed with the syndromic surveillance.
- The selection of sampling methods, composite vs grab, may have a massive impact in the results and potential use of WBE for SARS-CoV-2 or any other future pandemic, particularly in situations where low circulation of the microorganism is expected.
- The total load of SARS-CoV-2 RNA in raw wastewater followed a similar trend to the number of daily new COVID-19 reported cases. Considering data, the use of viral loading would be a more suitable approach than gene-based approaches to use in WBE settings. We consider using the number of daily new COVID-19 reported cases a more suitable approach to simply comparing with cumulative number of cases especially when dealing with several waves of infection.
- Data from this study corroborates the plausibility and timeliness of the development and deployment of a nationwide WBE system for SARS-CoV-2 (naturally, ideally scalable for future pandemics) to aid local health and governmental authorities in policy making to help with future health crisis.

Funding

This work was supported by Programa Operacional de Competitividade e Internacionalização (POCI) (FEDER component), Programa Operacional Regional de Lisboa, and Programa Operacional Regional do Norte (Project COVIDTECT, ref. 048467).

CRedit authorship contribution statement

Sílvia Monteiro: conceptualization, methodology, software, validation, formal analysis, investigation, writing – original draft, writing – review and editing, visualization. **Daniela Rente:** investigation. **Mónica V. Cunha:** conceptualization, funding acquisition, project administration, methodology, formal analysis, investigation, writing – review and editing. **Manuel Carmo Gomes:** review and editing. **Tiago A. Marques:** formal analysis, investigation, writing – review and editing. **Artur B. Lourenço:** review and editing. **Eugénia Cardoso:** review and editing,

sampling; **Pedro Álvaro:** review and editing, sampling; **João Vilaça:** review and editing, sampling; **Fátima Meireles:** review and editing, sampling; **Nuno Brôco:** project administration, funding acquisition, review and editing; **Marta Carvalho:** project administration, funding acquisition, review and editing; **Ricardo Santos:** conceptualization, methodology, resources, formal analysis, writing – review and editing.

Declaration of competing interest

The authors declare that they have no known competing financial interests or personal relationships that could have appeared to influence the work reported in this paper.

Acknowledgements

We thank all the workers from Águas de Portugal Group who contributed to wastewater sampling. We also thank the project's Advisory Board (EPAL, Águas do Douro e Paiva, National Environment Agency (APA), National Health Authority (DGS) and Portuguese Water and Waste Services Regulation Authority (ERSAR).

Strategic funding of Fundação para a Ciência e a Tecnologia (FCT), Portugal, to cE3c and BioISI Research Units (UIDB/00329/2020 and UIDB/04046/2020) is also gratefully acknowledged.

Appendix A. Supplementary data

Supplementary data to this article can be found online at <https://doi.org/10.1016/j.scitotenv.2021.150264>.

References

- Ahmed, W., Bertsch, P.M., Bivins, A., Bibby, K., Farkas, K., Gathercole, A., Haramoto, E., Gyawali, P., Korajkic, A., McMinn, B.R., Mueller, J.F., Simpson, S.L., Smith, W.J., Symonds, E.M., Thomas, K.V., Verhagen, R., Kitajima, M., 2020. Comparison of virus concentration methods for the RT-qPCR-based recovery of murine hepatitis A virus, a surrogate for SARS-CoV-2 from untreated wastewater. *Sci. Total Environ.* 739, 139960. <https://doi.org/10.1016/j.scitotenv.2020.139960>.
- Baert, L., Wobus, C.E., Van Coillie, E., Thackray, L.B., Debevere, J., Uyttendaele, M., 2008. Detection of murine norovirus 1 using plaque assay, transfection assay, and real-time reverse-transcription-PCR before and after heat exposure. *Appl. Environ. Microbiol.* 74 (2), 543–546. <https://doi.org/10.1128/AEM.01039-07>.
- Baird, R.B., Eaton, A.D., Rice, E.W., 2017. *Standard Methods for the Examination of Water and Wastewater*. 23rd ed. American Public Health Association, Washington DC.
- Blanco, A., Abid, I., Al-Otaibi, N., Pérez-Rodríguez, F.J., Fuentes, C., Guix, S., Pintó, R.M., Bosch, A., 2019. Glass wool concentration and optimization for the detection of enveloped and non-enveloped waterborne viruses. *Food Environ. Virol.* 11 (2), 184–192. <https://doi.org/10.1007/s12560-019-09378-0>.
- Chavarría-Miró, G., Anfruns-Estrada, E., Martínez-Velázquez, A., Vázquez-Portero, M., Guix, S., Paraira, M., Galofré, B., Sánchez, G., Pintó, R.M., Bosch, A., 2021. Time evolution of severe acute respiratory syndrome coronavirus 2 (SARS-CoV-2) in wastewater during the first pandemic wave of COVID-19 in the metropolitan area of Barcelona, Spain. *Appl. Environ. Microbiol.* 87 (7), e02750–20. <https://doi.org/10.1128/AEM.02750-20> In press.
- Choi, P.M., Tschärke, B.J., Donner, E., O'Brien, J.W., Grant, S.C., Kaserzon, S.L., Mackie, R., O'Mally, E., Crosbie, N.D., Thomas, K.V., Mueller, J.F., 2018. Wastewater-based epidemiology biomarkers: past, present and future. *Trends Anal. Chem.* 105, 453–469. <https://doi.org/10.1016/j.trac.2018.06.004>.
- Corman, V.M., Landt, O., Kaiser, M., Molenkamp, R., Meijer, A., Chu, D.K.W., Bleicker, T., Brünink, S., Schneider, J., Schmidt, M.L., Mulders, D., Haagmans, B.L., van der Veer, B., van der Brink, S., Wijsman, L., Goderski, G., Romette, J.-L., Ellis, J., Zambon, M., Peiris, M., Goossens, H., Reusken, C., Koopmans, M., Drosten, C., 2020. Detection of 2019 novel coronavirus (2019-nCoV) by real-time RT-PCR. *Euro Surveill.* 25 (3), 2000045. <https://doi.org/10.2807/1560-7917.ES.2020.25.3.2000045>.
- Corman, R.S., McKenna Jr., J.E., Fike, J., Oyler-McCance, S.J., Johnson, R., 2018. An experimental comparison of composite and grab sampling of stream water for metagenetic analysis of environmental DNA. *PeerJ* 6, e5871. <https://doi.org/10.7717/peerj.5871>.
- Crits-Christoph, A., Kantor, R.S., Olm, M.R., Whitney, O.N., Al-Shayeb, B., Lou, Y.C., Flamholz, A., Greenwald, H., Hinkle, A., Hetzel, J., Spitzer, S., Koble, J., Tan, A., Hyde, F., Schroth, G., Kuersten, S., Banfield, J.F., Nelson, K.L., 2021. Genome sequencing of sewage detects regionally prevalent SARS-CoV-2 variants. *mBio* 12 (1), e02703–e02720. <https://doi.org/10.1128/mBio.02703-20>.
- DGS, 2020. Novo Coronavírus – COVID-19: relatório da situação. <https://covid19.min-saude.pt/relatorio-de-situacao/>. (Accessed 3 October 2020).
- EC, 2021. Commission Recommendation of 17.3.2021 on a Common Approach to Establish a Systematic Surveillance of SARS-CoV-2 and Its Variants in Wastewater in the EU. Brussels, Belgium.

- ECDC, 2020. COVID-19 situation update for the EU/EEA, as of 24 April 2020. <https://www.ecdc.europa.eu/en/cases-2019-ncov-eueea> 24 April 2020.
- Flood, M., D'Souza, N., Rose, J.B., Aw, T.G., 2021. Methods evaluation for rapid concentration and quantification of SARS-CoV-2 in raw wastewater using droplet digital and quantitative RT-PCR. *Food Environ. Virol.* 13, 303–315. <https://doi.org/10.1007/s12560-021-09488-8>.
- Gonçalves, J., Koritnik, T., Mioc, V., Trkov, M., Bolješić, M., Berginc, N., Prosenc, K., Kotar, T., Paragi, M., 2021. Detection of SARS-CoV-2 RNA in hospital wastewater from a low COVID-19 disease prevalence area. *Sci. Total Environ.* 755 (Part 2), 143226.
- Gonzalez, R., Curtis, K., Bivins, A., Bibby, A., Weir, M.H., Yetka, K., Thompson, H., Keeling, D., Mitchell, J., Gonzalez, D., 2020. COVID-19 surveillance in southeastern Virginia using wastewater-based epidemiology. *Water Res.* 186, 116296. <https://doi.org/10.1016/j.watres.2020.116296>.
- He, X., Lau, E.H.Y., Wu, P., Deng, X., Wang, J., Hao, X., Lau, Y.C., Wong, J.Y., Guan, Y.G., Tan, X., Mo, X., Chen, Y., Liao, B., Chen, W., Hu, F., Zhang, Q., Zhong, M., Wu, Y., Zhao, L., Zhang, F., Cowling, B.J., Li, F., Leung, G.M., 2020. Temporal dynamics in viral shedding and transmissibility of COVID-19. *Nat. Med.* 26, 672–675. <https://doi.org/10.1038/s41591-020-0869-5>.
- Hovi, T., Shulman, L.M., Van der Avoort, H., Deshpande, J., Roivainen, M., De Gourville, E.M., 2012. Role of environmental poliovirus surveillance in global polio eradication and beyond. *Epidemiol. Infect.* 140 (1), 1–13. <https://doi.org/10.1017/S095026881000316x>.
- Jahn, K., Dreifuss, D., Topolsky, I., Kull, A., Ganesanandamoorthy, P., Fernandez-Cassi, X., Bänziger, C., Stachler, E., Furhmann, L., Jablonski, K.P., Chen, C., Aquino, C., Stadler, T., Ort, C., Kohn, T., Julian, T.R., Beerewinkel, N., 2021. Detection of SARS-CoV-2 variants in Switzerland by genomic analysis of wastewater samples. *medRxiv* <https://doi.org/10.1101/2021.01.08.21249379>.
- Jarvis, B., 2007. On the compositing of samples for qualitative microbiological testing. *Lett. Appl. Microbiol.* 45, 592–598. <https://doi.org/10.1111/j.1472-765X.2007.02237.x>.
- Koopmans, J.S., Henry, C.J., Park, J.H., Eisenberg, M.C., Ionides, E.L., Eisenberg, J.N., 2017. Dynamics affecting the risk of silent circulation when oral polio vaccination is stopped. *Epidemics* 20, 21–36. <https://doi.org/10.1016/j.epidem.2017.02.013>.
- La Rosa, G., Muscillo, M., 2013. Molecular detection of viruses in water and sewage. In: Cook, N. (Ed.), *Viruses in Food and Water: Risks, Surveillance and Control*. Woodhead Publishing Limited, Cambridge, pp. 97–125.
- Lescure, F.-X., Bouadma, L., Nguyen, D., Parisey, M., Wicky, P.-H., Behillil, S., Gaymard, A., Bouscambert-Duchamp, M., Donati, F., Le Hingrat, Q., Enouf, V., Houhou-Fidouh, N., Valette, M., Mailles, A., Lucet, J.-C., Mentre, F., Duval, X., Descamps, D., Malvy, D., Timsit, J.-F., Lina, B., Yazdanpanah, Y., van-der-Werf, S., 2020. Clinical and virological data of the first cases of COVID-19 in Europe: a case series. *Lancet Infect. Dis.* 20 (6), 697–706. [https://doi.org/10.1016/S1473-3099\(20\)30200-0](https://doi.org/10.1016/S1473-3099(20)30200-0).
- Mandl, K.D., Overhage, J.M., Wagner, M.W., Lober, W.B., Sebastiani, P., Mostashari, F., Pavlin, J.A., Gesteland, P.H., Treadwell, T., Koski, E., Hutwagner, L., Buckeridge, D.L., Aller, R.D., Grannis, S., 2004. Implementing syndromic surveillance: a practical guide informed by the early experiences. *J. Am. Med. Inform. Assoc.* 11 (2), 141–150. <https://doi.org/10.1197/jamia.M1356>.
- Medema, G., Heijnen, L., Elsinga, G., Italiaander, R., Brouwer, A., 2020. Presence of SARS-Coronavirus-2 RNA in sewage and correlation with reported COVID-19 prevalence in the early stage of the epidemic in The Netherlands. *Environ. Sci. Technol. Lett.* <https://doi.org/10.1021/acs.estlett.0c00357>.
- Meselson, M., 2020. Droplets and aerosols in the transmission of SARS-CoV-2. *N. Engl. J. Med.* 382 (21), 2063. <https://doi.org/10.1056/NEJMc2009324>.
- Pan, Y., Zhang, D., Yang, P., Poon, L.L.M., Wang, Q., 2020. Viral load of SARS-CoV-2 in clinical samples. *Lancet Infect. Dis.* 20 (4), 411–412. [https://doi.org/10.1016/S1473-3099\(20\)30113-4](https://doi.org/10.1016/S1473-3099(20)30113-4).
- Philo, S., Keim, E., Swannstrom, R., Ong, A., Burnor, E., Kossik, A., Harrison, J., Demeke, B., Zhou, N., Beck, N., Shirai, J., Meschke, J.S., 2020. A comparison of SARS-CoV-2 wastewater concentration methods for environmental surveillance. *Sci. Total Environ.* 760, 144215. <https://doi.org/10.1016/j.scitotenv.2020.144215>.
- Randazzo, W., Truchado, P., Ferranfo, E.C., Simon, P., Allende, A., Sanchez, G., 2020. SARS-CoV-2 RNA titers in wastewater anticipated COVID-19 occurrence in a low prevalence area. *Water Res.* 181, 115942. <https://doi.org/10.1016/j.watres.2020.115942>.
- Reddy, D., 2010. Responding to pandemic (H1N1) 2009 influenza: the role of oseltamivir. *J. Antimicrob. Chemother.* 65 (Suppl. 2), ii35–ii40. <https://doi.org/10.1093/jac/dkq014>.
- RTP, 2020. COVID-19. Ministra admite que Portugal entra em “fase de crescimento exponencial”. https://www.rtp.pt/noticias/mundo/covid-19-ministra-admite-que-portugal-entra-em-fase-de-crescimento-exponencial_e1212035. (Accessed 16 March 2021).
- Santos, R., Monteiro, S., 2013. Epidemiology, control, and prevention of emerging zoonotic viruses. In: Cook, N. (Ed.), *Viruses in Food and Water: Risks, Surveillance and Control*. Woodhead Publishing Limited, Cambridge, pp. 442–457.
- Sherchan, S.P., Shahin, S., Ward, L.M., Tandukar, S., Aw, T.G., Schmitz, B., Ahmed, W., Kitajima, M., 2020. First detection of SARS-CoV-2 RNA in wastewater in North America: a study in Louisiana, USA. *Sci. Total Environ.* 743, 140621. <https://doi.org/10.1016/j.scitotenv.2020.140621>.
- Singer, A.C., Järhult, J.D., Grabic, R., Khan, G.A., Fedorova, G., Fick, J., Lindberg, R.H., Bowes, M.J., Olsen, B., Söderström, H., 2013. Compliance to oseltamivir among two populations in Oxfordshire, United Kingdom affected by influenza A(H1N1)pdm09, November 2009 – a waste water epidemiology study. *PLoS One* 8, e60221. <https://doi.org/10.1371/journal.pone.0060221>.
- U.S. Geological Survey, 2006. Techniques and methods 1-D3: guidelines and standard procedures for continuous water-quality monitors: station operation, record computation, and data reporting. <https://pubs.usgs.gov/tm/2006/tm1D3/>. (Accessed 9 July 2020).
- U.S. Geological Survey, 2010. Scientific investigations report 2010-5008: use of continuous monitors and autosamples to predict unmeasured water-quality constituents in tributaries of the Tualatin River, Oregon. <https://pubs.usgs.gov/sir/2010/5008/lot.html>. (Accessed 9 July 2020).
- Wang, J., Feng, H., Zhang, S., Ni, Z., Ni, L., Chen, Y., Zhuo, L., Zhong, Z., Qu, T., 2020. SARS-CoV-2 RNA detection of hospital isolation wards hygiene monitoring during the coronavirus disease 2019 outbreak in a Chinese hospital. *Int. J. Inf. Dis.* 94, 103–106. <https://doi.org/10.1016/j.scitotenv.2020.139652>.
- Westhaus, S., Weber, F.-A., Schiwy, S., Linnemann, V., Brinkmann, M., Wiedera, M., Greve, C., Janke, A., Hollert, H., Wintgens, T., Ciesek, S., 2020. Detection of SARS-CoV-2 in raw and treated wastewater in Germany – suitability for COVID-19 surveillance and potential transmission risks. *Sci. Total Environ.* 751, 141750. <https://doi.org/10.1016/j.scitotenv.2020.141750>.
- WHO, 2015. Guidelines on Environmental Surveillance for Detection of Polioviruses, Working Draft. Geneva, Switzerland. http://polioeradication.org/wp-content/uploads/2016/07/GPLN_GuidelinesES_April2015.pdf.
- Wigginton, K.R., Ye, Y., Ellenberg, R.M., 2015. Emerging investigators series: the source and fate of pandemic viruses in the urban water cycle. *Environ. Sci.: Water Res. Technol.* 1, 735.
- Wölfel, R., Corman, V.M., Guggemos, W., Seilmaier, M., Zange, S., Müller, M.A., Niemeyer, D., Jones, T.C., Vollmar, P., Rothe, C., Hoelscher, M., Bleicker, T., Brünink, S., Schneider, J., Ehmann, R., Zwirgmaier, K., Drosten, C., Wendtner, C., 2020. Virological assessment of hospitalized patients with COVID-2019. *Nature* 581, 465–469. <https://doi.org/10.1038/s41586-020-2196-x>.
- Wu, F., Xiao, A., Zhang, J., Gu, X., Lee, W.L., Kauffman, K., Hanage, W., Matus, M., Ghaeli, N., Endo, N., Duvallet, C., Moniz, K., Erickson, T., Chai, P., Thompson, J., Alm, E., 2020. SARS-CoV-2 titers in wastewater are higher than expected from clinically confirmed cases. *MedRxiv* <https://doi.org/10.1101/2020.04.05.20051540>.
- Wu, Y., Guo, C., Tang, L., Hong, Z., Zhou, J., Dong, X., Yin, H., Xiao, Q., Tang, Y., Qu, X., Kuang, L., Fang, X., Mishra, N., Lu, J., Shan, H., Jiang, G., Huang, X., 2020. Prolonged presence of SARS-CoV-2 viral RNA in faecal samples. *Lancet Gastroenterol. Hepatol.* 5 (5), 434–435. [https://doi.org/10.1016/S2468-1253\(20\)30083-2](https://doi.org/10.1016/S2468-1253(20)30083-2).
- Wurtzer, S., Marechal, V., Mouchel, J.-M., Maday, Y., Teyssou, R., Richard, E., Almayrac, J.L., Moulin, L., 2020. Evaluation of lockdown effect on SARS-CoV-2 dynamics through viral genome quantification in waste water, Greater Paris, France, 5 March to 23 April 2020. *Euro Surveill.* 25, 2000776. <https://doi.org/10.2807/1560-7917.ES.2020.25.50.2000776>.
- Xu, Y., Li, X., Zhu, B., Liang, H., Fang, C., Gong, Y., Guo, Q., Sun, X., Zhao, D., Shen, J., Zhang, H., Liu, H., Xia, H., Tang, J., Zhang, K., Gong, S., 2020. Characteristics of pediatric SARS-CoV-2 infection and potential evidence for persistent fecal viral shedding. *Nat. Med.* 26 (4), 502–505. <https://doi.org/10.1038/s41591-020-0817-4>.
- Young, B.E., Fong, S.-W., Chan, Y.-H., Mak, T.-M., Ang, L., Anderson, D., Lee, C., Amrun, S., Lee, B., Goh, Y., Su, Y., Wei, W., Kalimuddin, S., Chai, L., Pada, S., Tan, S., Sun, L., Parthasarathy, P., Chen, Y., Barkham, T., Lin, R., Maurer-Stroh, S., Leo, Y.-S., Wang, L.-F., Renia, L., Lee, V., Smith, G., Lye, D., Ng, L., 2020. Effect of a major deletion in the SARS-CoV-2 genome on the severity of infection and the inflammatory response: an observational cohort study. *Lancet* 396 (10251), 603–611. [https://doi.org/10.1016/S0140-6736\(20\)31757-8](https://doi.org/10.1016/S0140-6736(20)31757-8).
- Zang, R., Castro, M., McCune, B., Zeng, Q., Rothlauf, P., Sonnek, N., Liu, Z., Brulois, K., Wang, X., Greenberg, H., Diamond, M., Ciorba, M., Whelan, S., Ding, S., 2020. TMPRSS2 and TMPRSS4 promote SARS-CoV-2 infection of small intestinal enterocytes. *Sci. Immunol.* 5 (47), eabc3582. <https://doi.org/10.1126/sciimmunol.abc3582>.
- Zhou, X., Zhang, T., Song, D., Huang, T., Peng, Q., Chen, Y., Li, A., Zhang, F., Wu, Q., Ye, Y., Tang, Y., 2017. Comparison and evaluation of conventional RT-PCR SYBR green I and TaqMan real-time RT-PCR assays for the detection of porcine epidemic diarrhea virus. *Mol. Cell. Probes* 33, 36–41. <https://doi.org/10.1016/j.mcp.2017.02.002>.
- Zuccato, E., Chiabrando, C., Castiglioni, S., Calamari, D., Bagnati, R., Schiarea, S., Fanelli, R., 2005. Cocaine in surface waters: a new evidence-based tool to monitor community drug abuse. *Environ. Health* 4, 14. <https://doi.org/10.1186/1476-069X-4-14>.