

## CLINICAL VIDEO

## Winking earlobe sign

Ryohei Ono  | Togo Iwahana | Kaoruko Aoki | Hirotohi Kato | Yoshio Kobayashi

Department of Cardiovascular Medicine, Chiba University Graduate School of Medicine, Chiba, Japan

**Correspondence**

Ryohei Ono, Department of Cardiovascular Medicine, Chiba University Graduate School of Medicine, 1-8-1 Inohana, Chuo-ku, Chiba 260-8670, Japan.  
Email: ryohei\_ono\_0820@yahoo.co.jp

**Funding information**

No funding to declare

**Abstract**

The winking earlobe sign is a sign of tricuspid regurgitation, characterized by the movement of the earlobe coincident with the pulse.

**KEYWORDS**

frank's sign, physical examination, pulse, tricuspid regurgitation, winking earlobe sign

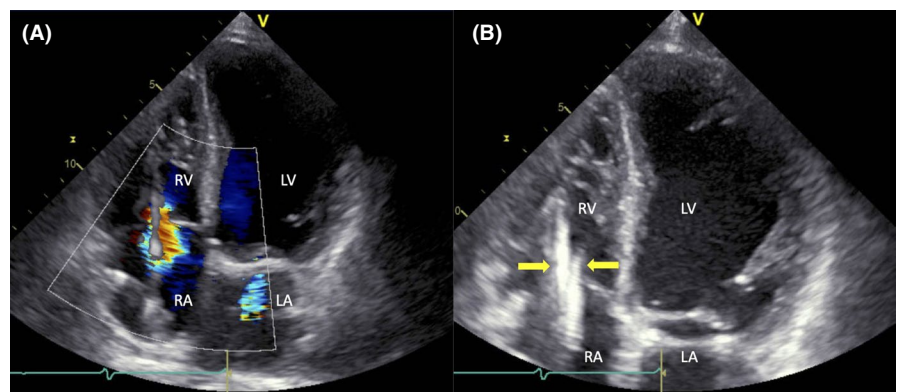
## 1 | CLINICAL VIDEOS

A 71-year-old man with a history of implantable cardioverter-defibrillator (ICD) implantation presented with dyspnea. A physical examination showed Frank's sign, a diagonal crease in the earlobe, and remarkable systolic pulsations of the earlobe (winking earlobe sign) and the neck with jugular vein distension (Video S1).

Moreover, a holosystolic murmur on auscultation and peripheral edema was noted. Transthoracic echocardiography revealed severe tricuspid regurgitation (TR) considered as ICD lead-associated TR because two leads entered the right ventricle through the tricuspid orifice (Figure 1).

The winking earlobe sign is a sign of TR, characterized by the movement of the earlobe coincident with the pulse.<sup>1,2</sup>

**FIGURE 1** Transthoracic echocardiography showing severe tricuspid regurgitation (A) and two leads (arrows) entering the right ventricle through the tricuspid orifice (B). LA: left atrium, LV: left ventricle, RA: right atrium, RV: right ventricle



This is an open access article under the terms of the Creative Commons Attribution License, which permits use, distribution and reproduction in any medium, provided the original work is properly cited.

© 2022 The Authors. *Clinical Case Reports* published by John Wiley & Sons Ltd.

## ACKNOWLEDGMENT

This work was supported by Bayer Yakuhin. We would like to thank Editage [<http://www.editage.com>] for editing and reviewing this manuscript for English language.

## CONFLICT OF INTEREST

None declared.

## AUTHOR CONTRIBUTIONS

RO contributed to patient management, conception, and design of case report; acquisition, analysis and interpretation of data, and drafting the article. TI, KA, and HK contributed to patient management, conception, and design of case report. YK contributed to interpretation of data and revised the article critically. All authors gave final approval of the article and have agreed to be accountable for all aspects of the work.

## ETHICAL APPROVAL

Written informed consent was obtained from the patient.

## CONSENT

Written patient consent has been signed and collected.

## DATA AVAILABILITY STATEMENT

The data that support the findings of this study are available from the corresponding author upon reasonable request.

## ORCID

Ryohei Ono  <https://orcid.org/0000-0002-4875-7470>

## REFERENCES

1. Byrd MD. Lateral systolic pulsation of the earlobe: a sign of tricuspid regurgitation. *Am J Cardiol.* 1984;54:244.
2. Shikino K, Ikusaka M. Earlobe pulsation: a sign of tricuspid regurgitation. *BMJ Case Rep.* 2018;11(1):e227861.

## SUPPORTING INFORMATION

Additional supporting information may be found in the online version of the article at the publisher's website.

**How to cite this article:** Ono R, Iwahana T, Aoki K, Kato H, Kobayashi Y. Winking earlobe sign. *Clin Case Rep.* 2022;10:e05280. doi:[10.1002/ccr3.5280](https://doi.org/10.1002/ccr3.5280)