

Review

The Role of CCL21/CCR7 Chemokine Axis in Breast Cancer Progression

Balsam Rizeq and Mohammed Imad Malki *

College of Medicine, QU Health, Qatar University, P. O. Box. 2713, Doha, Qatar; brizeq@qu.edu.qa

* Correspondence: momalki@qu.edu.qa; Tel.: +974-4403-7847

Received: 28 February 2020; Accepted: 11 April 2020; Published: 23 April 2020



Abstract: Breast cancer is a leading cause of cancer-related deaths worldwide, predominantly caused by metastasis. It is generally accepted that the pattern of breast cancer metastasis is largely determined by the interaction between the chemokine receptors on cancer cells and the chemokines expressed at the sites of metastatic disease. Chemokine receptors belong to the G-protein-coupled receptors (GPCRs) family that appear to be implicated in inflammatory diseases, tumor growth and metastasis. One of its members, C-C Chemokine receptor 7 (CCR7), binds chemokines CCL19 and CCL21, which are important for tissue homeostasis, immune surveillance and tumorigenesis. These receptors have been shown to induce the pathobiology of breast cancer due to their ability to induce cellular proliferation and migration upon the binding of the cognate chemokine receptors. The underlying signaling pathways and exact cellular interactions within this biological system are not fully understood and need further insights. Thus, in this review, we summarize the essential roles of CCR7 and its receptors in breast cancer progression. Furthermore, we discuss the mechanisms of regulation that may lead to novel opportunities for therapeutic intervention. Despite the enormous advances in our knowledge of the nature of the chemokines in breast cancer metastasis, research about the involvement of CCR7 in cancer progression is still limited. Therefore, further studies are essential to illustrate the distinct roles of CCR7 in cancer progression and validate its potential as a preventive bio-factor for human breast cancer metastasis by targeting chemokine receptor genes.

Keywords: CCR7; CCL19; CCL21; breast cancer; metastasis; signaling therapy

1. Introduction

Since their discovery over 30 years ago, numerous chemokines have been identified, with new roles emerging past the homing of leukocytes [1]. Chemokines or chemotactic cytokines constitute a large family of small (8–12 kDa) structurally related polypeptides that exert their functions by binding specific G α i-protein-coupled chemokine receptors (GPCR) on the cell surface to induce chemotaxis [2]. Structurally, to date, more than 40 human chemokines have been described. The most widely used nomenclature subdivides chemokines into four subfamilies (CC, CXC, CX3C and XC) according to the position of the first two N-terminal cysteine residues in their amino acid sequence where C represents the cysteine and X is any amino acid [1].

Currently, 22 chemokine receptors have been identified in humans. These are G-protein-coupled receptors (GPCRs)-integral seven-transmembrane glycoproteins domains (connected by three intracellular and three extracellular loops), a short extracellular N-terminal that will bind to the ligand and an intracellular C-terminal coupled to the group of G-protein receptors. In the literature, four “atypical” receptors have been described capable of binding chemokines with high affinity with no signaling or signaling which is not mediated by G-proteins. This group of receptors has also been named “scavenger” receptors and recently renamed to “ACKR”, the acronym of atypical chemokine receptor [3]. Receptor–ligand interaction leads to signal transduction involving G-proteins

which promotes the release of intracellular second messengers such as calcium, cyclic adenosine monophosphate (cAMP) and phosphoinositides (reviewed in [4]). Chemokines (chemotactic cytokines) are small heparin-binding proteins that are known to play a crucial role in directing the movement of cells throughout the body [5]. Most chemokines bind several receptors and a single receptor can often bind several chemokines, forming an intertwined web in which a sole role can be played by several elements.

Chemokines and chemokine receptors are essential in dendritic cell (DC) maturation and (B and T) cells' development [6,7]. Indeed, recent studies indicated that chemokines have a role in the chemotaxis of particular T cell or monocyte subsets that had not been identified previously [8,9]. The chemokine family can be either pro-inflammatory or homeostatic. The former is released due to a pathogen; an infection or other pro-inflammatory stimuli that causes the induction of chemokines that will direct the recruitment of leukocytes towards the site of injury [10]. Depending on the type of inflammation, a different immune cell subset will be recruited to the site [11], whilst the latter is constitutively expressed in specific tissues and has roles in tissue development (such as angiogenesis or neovascularization) or basal leukocyte migration.

A considerable body of evidence highlights the importance of chemokines and their receptors during tumor progression and metastasis. Initially, chemokines selectively regulate the recruitment and trafficking of leukocyte subsets during homeostasis and inflammation [12,13]. However, it is becoming increasingly clear that they are also responsible for controlling the function of several tumor-promoting processes including host immune responses against malignant cells, cancer cell growth, angiogenesis and metastasis [14,15]. Chemokine receptors are further involved in the regulation of cancer progression through the recruitment of immune cell subsets. Importantly, there is a paucity of information from *in vivo* experimental systems regarding the specific function of individual chemokine receptors in cancer progression, whereas only very little data exist regarding their role in primary tumor formation.

The discovery that cancer cells overexpress C-C Chemokine receptor 7 (CCR7), which directs them to organs that express their ligands CCL21 and CCL19, led to an increase in reports confirming that chemokine receptors were present in a non-random manner in many other cancers. A positive correlation between chemokine receptor expression and worse prognosis has been found in most but not all cancers. In breast cancer, it has been proved that the chemokine receptors CXCR4, CCR7, CCR6 and CXCR3 and their ligands have been associated with metastasis [16,17]. Despite all the evidence linking CCR7 expression to a poorer prognosis, still much remains unknown about the exact mechanisms behind its upregulation and its role in breast cancer progression, which will be discussed in details in this review.

2. Chemokine Receptors in Cancer

The recruitment of immune cells to the tumor site is mediated by the actions of chemokines and their specific ligands, which have also been widely linked to cancer progression and metastasis. Upon the binding of the chemokine ligands, the receptor undergoes a conformational change. This results in the expression of several genes and activates a signaling cascade that, depending on the context, can stimulate cellular growth, migration, pseudopodia formation, adhesion, as well as angiostasis [18].

It was thought that metastasis was regulated through factors such as the size of the vessels or the difference in pressure between the blood and the organs [19]. However, because of the involvement of chemokine receptors in the migration of cells, they have been widely implicated in the metastasis of cancer cells throughout the body [10]. Tumor cells, through the expression of lymphoid chemokine receptors, may exploit the physiological lymphatic trafficking system to mediate invasion into the lymphatic vasculature [20]. Chemokine receptors can potentially facilitate tumor dissemination at numerous stages of the metastatic cascade, including vascular extravasation, protection from the host, adherence of tumor cells to endothelium, proliferation, colonization and angiogenesis [20,21]. To date, the most recognized receptor/ligand pairs in these phenomena include CXCR4/CXCL12 and CCR7/CCL21.

3. C-C Chemokine Receptor 7 (CCR7) in Cancer

C-C Chemokine receptor 7 (CCR7), is a GPCR commonly expressed by T-cell subset central memory cells, thymic T-cells, B cells, mature DCs and other rare cell subsets such as CD4+ CD25+ splenocytes [22–25].

CCL21 and CCL19 are constitutively expressed at the beginning of the lymphatic vessels and in lymphoid organs. They are present on several stromal cells and on the high endothelial venules (HEVs). Unlike CCL19, CCL21 binds to glycosaminoglycans (GAGs) and immobilizes on the surface of endothelial cells [26]. This means that only CCL21 is required for the intravasation into different lymphatic vessels [27]. Interestingly, the literature showed that the stimulation of CCR7 with both CCL19 and CCL21 ligands induces G-protein activation, ERK 1/2 signaling pathway, calcium mobilization and cell migration [28]. CCR7 desensitization and its ERK activation are mediated through β -arrestin, which may explain why the phosphorylation is four times stronger with CCL21, implying that CCL19 effects may be more transient than with CCL21 [29]. Internalized CCR7 is recycled back to transfected cell lines or the plasma membrane of primary T cells to participate in cell migration, whereas CCL19 is sorted to lysosomes for degradation [30].

While the overexpression of CXCR4/CXCL12 is correlated with the homing of cancer cells to the liver, lung, bone marrow and lymph nodes, the overexpression of the CCR7/CCL21 axis has mainly been related to lymph node metastasis [18]. It also plays a critical role in the progression of many different malignancies such as breast [31], gastric [32], skin (melanoma) [33], head and neck [34], lung [35], esophageal [36], hepatocellular [37], cervical [38], thyroid [39], tonsillar [40], colorectal [41] and prostate cancers [42] as summarized in (Table 1). In the majority of these cancers, larger tumor size and deeper invasion was associated with CCR7 expression [43]. Taken together, the CCR7-mediated cell migration underlies a broad range of immune system activities and therefore it is important to understand its mechanism.

Table 1. The roles of C-C Chemokine receptor 7 (CCR7)/CCL21 in various human cancers.

Tumor Type	Observations	References
Breast Cancer	Correlates and promotes lymphogenesis and metastasis. CCL21 induces actin polymerization and migration.	[18,44–46]
Human Bladder Cancer	Enhances the migration, invasion and tumor proliferation/ correlates with poor prognosis.	[43,47]
Cervical Cancer	Metastasis and poor prognosis.	[38,40]
Colorectal Cancer	Poor prognosis and metastasis.	[48–50]
Gastric Cancer	Overall poor survival as well as metastasis and EMT.	[51,52]
Head and Neck Cell Carcinoma	CCR7/CCL21 correlates with metastasis.	[53,54]
Lung Cancer	Tumor dissemination and metastasis.	[55,56]
Lymphomas	Poor prognosis and tumor dissemination.	[57,58]
Melanomas	Metastasis and poor outcome.	[18,59]
Esophageal Cancer	Expression of CCR7 correlates with poor prognosis and metastasis. CCL21 induces pseudopodia formation, cell metastasis and angiogenesis.	[60–62]
Prostate Cancer	Tumor growth, metastasis and poor survival through lymphatic metastasis.	[63,64]

3.1. Mode of Action of C-C Chemokine Receptor 7 (CCR7) in Migration and Adhesion

Cellular migration in vivo and in vitro is dependent on both the physical and biochemical properties of cells and the extracellular matrix (ECM) [65]. For cells to extravasate from the bloodstream and adhere to the endothelium, chemokines need to be bound to the GAGs present in the ECM [66].

This is an electrostatic interaction where the chemokine C-terminal region is positively charged due to the presence of basic amino acids such as lysine and arginine, whilst GAGs are highly negatively charged due to the presence of carboxylate and sulphate residues [66]. Recent work has shown that cells can sense the mechanical stiffness of their physical environment, and environmental stiffness can lead to changes in cellular gene expression and phenotype [67]. Moreover, chemokines can induce migration towards an increasing concentration of a chemoattractant or migration towards a decreasing concentration of a chemorepellent creating a concentration gradient called haptotaxis [68]. In mature DCs, for instance, immobilized CCL21 causes haptotaxis and integrin activation, while soluble CCL21 or CCL19 induce chemotaxis, and both can occur in combination [69].

The homing and migration of lymphocytes as well as CCR7-positive malignant cells metastasis into secondary lymphoid tissue (SLT) are precisely regulated by complex chemokine–chemokine receptor interaction in the microenvironment. CCR7-mediated T cell migration within SLT is critical for T cell activation and differentiation in adaptive immunity. Investigating the migratory response of CCR7 expressing T cells within a certain chemokine environment will lead to a better understanding of the mechanism of directional migration of T lymphocytes [70]. An investigation of CCR7 function in chemotaxing cells may also help to understand its role in cancer metastasis [71].

CCR7 is of particular interest in understanding metastasis because CD4+ T cells and DCs require CCR7 expression to migrate through lymphatic vessels [72]. The lymphatic vessels function as the sink for the interstitial flow; it has been postulated that interstitial flow and CCL21 act in conjunction to guide migrating tumor cells to lymphatics in the formation of metastases [73].

Pre-clinical studies have demonstrated that CCL19/CCL21 producing lymphatic endothelial cells can actively guide the chemotactic migration of CCR7-expressing tumor cells [33]. Additionally, CCL21 has been shown to promote the generation of new lymphoid-like structures within the tumor microenvironment, which are characterized by the infiltration of immune-suppressive T-regulatory cells and myeloid-derived suppressor cells [74]. However, the role of CCL21 during tumor progression remains somewhat controversial, with tumor-suppressive properties also been reported. CCL21 is a potent chemoattractant for tumor-infiltrating lymphocytes, which can exert a robust anti-tumor immune response especially during the early stages of tumor progression [75]. A recent clinical study reported an improved outcome associated with the increased infiltration of CCR7-positive T-cells within advanced colorectal carcinoma [76]. Within gastric cancers, CCR7 expression in the primary tumor was reported as the most important factor in determining lymph node metastasis. There is also preclinical evidence that CCR7 expression is a rate-limiting step for mediating the lymphatic spread of pancreatic ductal adenocarcinoma [77].

3.2. C-C Chemokine Receptor 7 (CCR7) and Angiogenesis

CCR7 has also been linked to the creation of new blood and lymphatic vessels in breast cancer patient samples, though the mechanism is still not well understood [44]. This lymphangiogenesis is mediated through VEGF-C and its receptor VEGFR-3 [44]. Indeed, the overexpression of this growth factor has been well documented to increase lymph node metastasis [78]. Interestingly, there are also studies suggesting that whenever tumor cells express CCL21 it has an anti-tumorigenic effect through the inhibition of angiogenesis and increase of leukocyte recruitment, in particular of CD8 + T-cells and DCs [79]. However, this immune response is suboptimal (as stated previously) and this could be due to the lack of maturation of the DCs.

4. C-C Chemokine Receptor 7 (CCR7) and Breast Cancer

The receptor CXCR4 is the most studied of all chemokine receptors in cancers. Its roles in breast cancer, including cell survival, proliferation, motility, invasion, angiogenesis, recruitment and activation of a number of different cell types, as well as metastasis are well documented [80]. CCR7 is often up-regulated together with CXCR4 in cancer [81]. In addition, these two receptors form a

heterodimer on metastatic breast cancer cells, which activates alternative signaling pathways and promotes a metastatic phenotype [82].

In breast cancer, hypoxia has been shown to increase CCR7 expression through the hypoxia-inducible factor 1 (HIF-1)-mediated activation of the endothelin receptor A [83]. Epigenetic factors could also play a role in CCR7 upregulation, with histone deacetylation and DNA methylation playing a role in gene activation [84]. Despite all the evidence linking CCR7 expression to a poorer prognosis, still much remains unknown about the mechanisms behind its upregulation.

The interaction between CCR7 and CCL21 has been shown to improve the immunogenicity of CCR7-expressing breast cancer cells [85]. It also induces actin polymerization and pseudopodia formation, resulting in increased cell motility as illustrated in (Figure 1) [86].

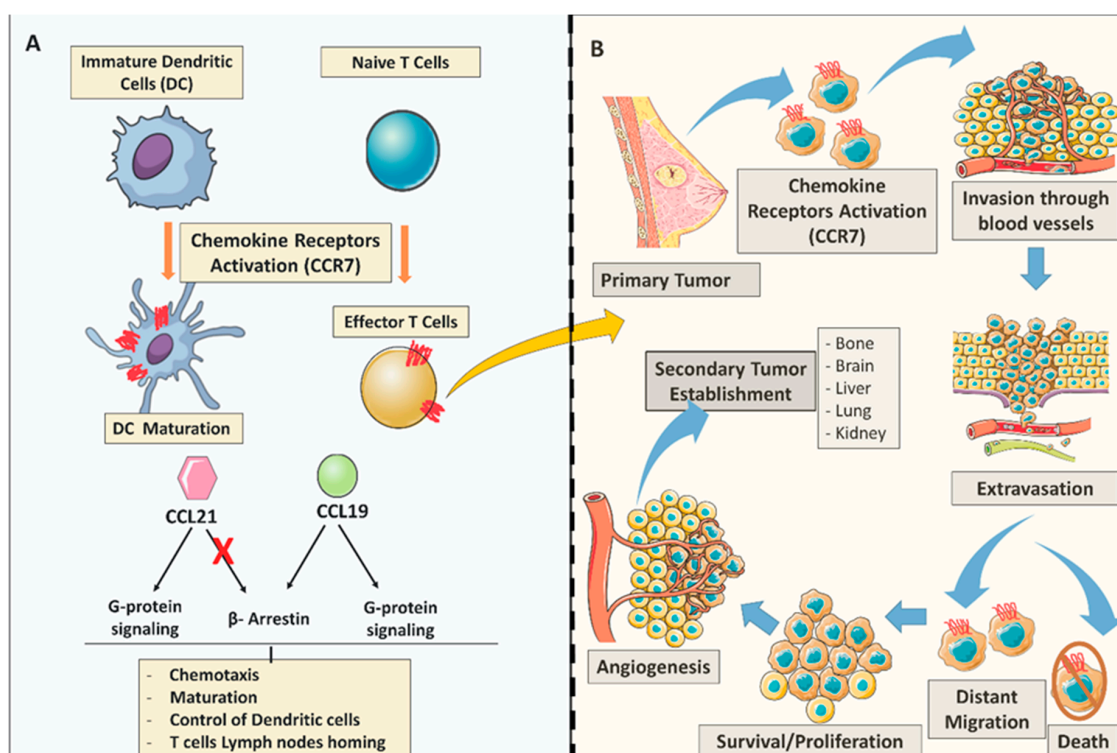


Figure 1. General C-C Chemokine receptor 7 (CCR7) chemokine dual role in the immune system and breast tumor metastasis. (A) CCR7 role in the adaptive immune system; CCL19/CCL21 chemokine expression activates CCR7 to promote dendritic cells (DC) and T-cell maturation. CCL21 and CCL19 chemokines determine differential signaling. Both chemokines CCL21 and CCL19 have the ability to display G-protein signaling cascades, however only CCL19 can trigger the β -arrestin recruitment. (B) Chemokine receptors in the metastatic process. (As illustrated) CCR7 chemokine receptor activation may play key roles in several steps during the process of metastasis; arrest; dissemination; invasion, extravasation; survival/proliferation) all under the control of the immune system trafficking to the site of inflammation.

4.1. Molecular Aspects of C-C Chemokine Receptor 7 (CCR7) Signaling Cascades in Breast Cancer

Chemokine signaling in which a cell responds to a self-secreted chemokine is known as autocrine signaling, as opposed to paracrine signaling in which a cell responds to a chemokine secreted by a neighboring cell [87]. Both autocrine and paracrine signaling are well established mechanisms that drive tumor cell phenotype and migration.

There are a large number of chemokines that regulate the downstream effector molecules which may account for the various effects of these recipients in tumor pathology. To date, the effector

molecules and unique mechanisms controlling cell chemotaxis, proliferation, survival and motility have been highly considered in chemokine receptor signaling in cancer [88,89].

Measuring chemokine ligands' ability to induce early physiological changes, chemotaxis, actin polymerization and calcium mobilization is routinely performed *in vitro* to assess chemokine receptor functionality [90]. These findings provide evidence that CCR7 activation is cell-dependent via distinct mechanisms of actions. A number of key metastasis steps have been shown to facilitate tumor dissemination, including the endothelium adhesion of tumor cells, blood vessel extravasation, protection from host responses, angiogenesis, proliferation and metastatic colonization [91].

It is thought that chemokine responses are activated through key survival pathways such as the PI-3K and AKT, JAK/STAT, ERK 1/2, JNK, GSK-3 α/β and MAP kinase [73,92,93]. Moreover, the exact signaling mediators in primary and invasive tumors are yet to be elucidated, although chemokine signals have been characterized in leukocytes with few currently available evidences on other cell types. The CCL21 binding to CCR7 has been reported to stimulate the activation phosphorylation of AKT (PI-3K pathway) that mediates a wide variety of intracellular targets to induce cell survival and inhibit apoptosis in many different types of cancer cells [94,95], as well as an implied effect on cell proliferation and motility [96]. This was further confirmed by the ability of CCR7 ligands to induce early migratory responses such as cytoskeleton remodeling and chemotaxis in metastatic breast cancer cells [97]. CCR5 and CCR7 enhance protooncogene c-Fos expression by JAK/STAT pathway in leukemia cells [98]. The activation of ERK in lymphoma and non-small lung cancer cells is also implicated in CCR3, CCR7 and CCR8 by inducing phosphorylation, proapoptotic protein inactivation and the activation of survival mechanisms [47,99].

Chemotactic responses and actin polymerization are not induced following CCR7 ligand-binding activation in non-metastatic breast cancer cells. Chemokine signaling pathways are mediated by the mobilization of the calcium flux through the activation of GPCRs, specifically the G α i subunit that results from the inhibiting of adenylyl cyclase-mediated cAMP [100,101]. The pre-treatment with the G α i inhibitor "pertussis toxin" impairs this calcium induction responsiveness. In addition, Adenylyl cyclase-mediated cAMP, stimulated by forskolin, is inhibited by CCL19 ligand treatment only in invasive breast cancer cells [102]. Therefore, functional G α i signaling after chemokine treatment was only observed in the metastatic breast cancer cells. However, even after the addition of a phosphatidic acid, non-chemokine GPCR and non-metastatic cells did not respond. This might have been caused by the disruption of the upstream signaling events.

Hematopoietic and non-hematopoietic tumors metastatic to lymph nodes are correlated with tumor-dependent CCR7 expression. Physiologically, this indicates mature DCs and naive T lymphocytes recruitment to lymph nodes [73,103]. However, the induced expression of CCR7 in breast cancer cells switches metastasis from the lung to lymph nodes, indicating that the organ specificities of metastatic cancer cells might be sufficient by a single chemical receptor [31]. In some experimental settings, epithelial-to-mesenchymal transition (EMT) was triggered by a PI3K-mediated activation of snail and glycogen synthase kinase (Gsk)-3 β in hepatocellular carcinoma cells through CCL21/CCR7 and CXCL5/CXCR2 binding [104]. Moreover, TGF- β is reported to stimulate EMT through crosstalk with NF- κ B signaling pathway in gastric cancer cells [51].

The pathways used by CCR7 to facilitate metastasis are not fully understood. It has been reported that CCR7 facilitates cancer progression by manipulating cancer cells' anoikis and mobility [82] as well as controlling the tumor microenvironment, including the inflammatory responses, immune tolerance and T cell activation [105,106]. Downstream potential signaling mediators of CCR7 have been reported to be associated with metastasis, such as ALDH3A2, AnXA6, EpCAM, and PVR [107]. MMPs play an important role in tumor cell invasion and migration. It has been illustrated that CCR7 triggers AKT which eventually leads to the secretion of MMP-2/9. The silencing of CCR7 thus acts as a targeted therapy to inhibit AKT and MMPs expression and attenuates MCF-7 cell proliferation, invasion and EMT [45]. A schematic illustration of CCR7 binding to the cognate ligands CCL19/CCL21 to induce several signaling transduction pathways in breast cancer is shown in (Figure 2).

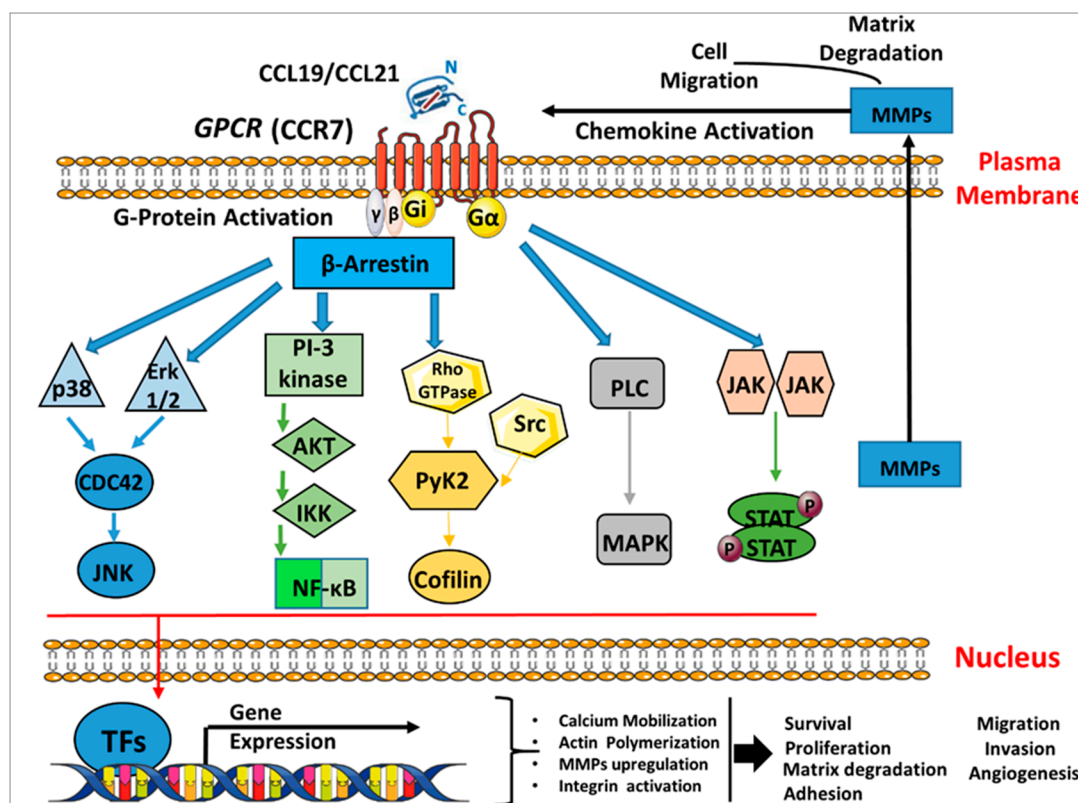


Figure 2. CCR7 chemokine receptor binding to the cognate ligands CCL19/CCL21 inducing signaling transduction pathways in breast cancer. Schematic representation of the seven transmembrane G-protein coupled receptor (CCR7) activation and internalization by ligand binding which triggers several signaling pathways cascades as follows: a. The binding of chemokine ligands CCL19/CCL21 to their CCR7 GPCRs leads to the activation of a G- α subunit and a Gi- $\beta\gamma$ heterodimer. b. This initiates downstream signaling effectors that further lead to signaling cascades, such as the activation of ERK1/2, PI3K/AKT, Rho GTPases, MAPK, and JAK/STAT, which can promote the transcription and expression of different genes such as MMPs. c. All the above induce broad biological effects including chemotaxis, cell survival/proliferation, matrix degradation, reorganization of the actin cytoskeleton, adhesion, cell migration, invasion and angiogenesis. GPCR, G-protein-coupled receptors; ERK, extracellular signal-regulated kinase; JNK: c-Jun N-terminal kinase; PI3K, Phosphatidylinositol-3-kinase; AKT, protein kinase B; NF- κ B, nuclear factor- κ B; Rho, Ras homolog gene family; PLC, phospholipase C; MAPK, mitogen-activated proteins kinase; JAK, Janus-activated kinase; TFs: Transcription factors, MMP, matrix metalloproteinase.

CCR7 expression is regulated by transcription factors, epigenetic and miRNAs mechanisms. Transcription factors such as SP-1, AP-1, NF- κ B and NF-AT1 can bind and regulate CCR7' expression [108,109]. Nevertheless, it has not been well described whether these factors are correlated with tumor metastasis. The constituent expression of Ets-1, an oncogene that is involved in EMT, is well associated with the expression of CCR7 and cell migration activity in MDA-MB-231 [110,111].

Studies in the field of breast cancer have shown that the correlation between the expression of CCR7 and clinical pathogenicity in human breast cancer is important, including vascular invasion, lymph node metastasis and tumor grade [112]. However, other reports found contradictory results [113]. Hence, to gain greater certainty, more studies are recommended to determine the association between patient survival, recurrence risk and metastasis with the expression of CCR7. Moreover, CCR7 expression may enhance breast cancer cells' migration to lymph nodes. Nevertheless, it is still not fully understood how this migration has contributed to a better prognosis. One explanation could be that positive CCR7 cancer cells primarily target metastasis to lymph nodes as well as empower

the immune system to eliminate escaped cancerous cells [114]. Remarkably, Gracio et al. reported that the alternative splicing of CCR7 has been correlated to clinical results [115]. Therefore, the interactions between this essential post-transcriptional regulation and patient survival should be carefully investigated in correlation with CCR7 alternative splicing in breast cancer [116]. Nevertheless, this issue should be addressed in future studies to reveal the impact of CCR7 expression.

4.2. The Expression and Functional Role of C-C Chemokine Receptor 7 (CCR7) in Breast Cancer Cells In Vitro

The up-regulation of specific chemokine/receptor pairs has been reported in many human cancers including lung, breast, colon, prostate, gastric and melanoma [91,117], although at this point their precise mechanisms of action at each recurring event of metastasis are still being investigated. Recently, the expression of CXCR4 and CCR7 have received considerable attention in tumor cells for their direct involvement in metastasis. A variety of cancer cell lines and primary tumors tissues reported an expression of these chemical receptors and the interaction with the associated ligands to promote *the in vitro* and *in vivo* movement of cancer cells [38].

The CCR7 expression was evaluated in breast cancer cells *in vitro* to ascertain whether the rates of expression of a chemokine receptor contribute to the pathogenicity of breast cancer. A group of cell lines was used; each was originally derived from patients with different types of metastatic breast disease displaying various degrees of invasiveness. The examination of the CCR7 expression revealed significant levels of expression in different breast cell lines. Studies reported low CCR7 mRNA levels in MCF-7, MDA-MB-231 and T47D [18,118], no expression at mRNA levels in MDA-MB-231 [119], and inducible levels in MCF-7, MDA-MB-231, and SKBR3 [83]. Clinical studies revealed that breast cancer tumors show cytoplasmic CCR7 expression [120,121]. The same cytoplasmic-confined phenomena were also reported later in 4T1 cells [122]. These data confirm the internalization and activation of the CCR7 receptor upon ligand binding. It is also worth mentioning that CCR7 expression was detected with similar levels in both immortalized normal breast epithelial cells (MCF10A) as well as in a highly invasive breast cancer cell line (MDA-MB-231) [106]. These data strongly suggest that CCR7 expressions are not strictly limited to invasive cells and would not be a useful predictor of metastasis in aggressive breast cancer. Although the CCR7 physiological function is known in normal breast epithelial cells, their exact role remains unknown but valuable to be determined in non-metastatic breast cancer cells. Moreover, it can be predicted that cells gain selective advantages to proliferate, colonize, survive and migrate at secondary sites when chemokine receptors are activated through cancer progression.

4.3. The Role of C-C Chemokine Receptor 7 (CCR7) on Breast Cancer Metastasis In Vivo

Metastasis is one of the problematic tumor processes to study *in vitro* since the tumor progression relies on sequential events that are dependent on the characteristics of the tumor cells and their interactions with the tissue environment [123]. Therefore, more relevant studies of metastasis are thought to originate from those performed *in vivo*. Significantly, mice models of different human cancers have become a central part of many types of biomedical research as they provide the most experimentally accessible mammalian model that shares genes, physiology and organ structure with the human system [124].

To provide further insight into chemokine-mediated metastatic mechanisms, the expression of CCR7 on mammary epithelial cell lines was modulated using an shRNA system based on the ability to deliver and stably express shRNAs, to study the effect of chemokine modulation on the metastatic propensity of breast cancer cells *in vivo* [125]. The silencing of CCR7 decreased the *in vitro* proliferation, migration and invasion of CCL21/CCL19-induced MCF-7 and MDA-MB-231 breast cancer cells [45,126]. Furthermore, the depletion of CCR7 in BALB/c mice inhibited orthotopically injected 4T1 cells metastasis, while tail veins' injection had no impact on breast cancer metastasis. These outcomes were consistent with the previous findings, showing that CCR7 did not affect liver and lung metastasis when pancreatic cancer cells (TD-2) were injected via tail veins, but rather increased B16 cell metastasis

to lymph nodes [127]. On the other hand, CCR7 overexpression in MMTV-PyMT-mediated breast cancer cells, injected orthotopically into FVB mice, significantly increased lymph node metastasis [31].

CCR7 expression has been reported in particular to increase B16 metastatic capacity via the lymphatic system but not through a blood-borne pathway [128]. At first, CCR7 had a significant role as stimulated DCs migrated through various lymph vessels to specific lymph nodes. Subsequently, it was suggested that neoplastic cells also enter lymph vessels to improve lymphatic dissemination, shown for B16 melanoma cells [129]. The formation of the CCR7 metastatic lymph node expressing B16 cells was effectively blocked by the neutralization of anti-CCL21 [129], which confirmed the role of CCR7 during metastasis. Given the contrasting studies, the exact relationship between the expression of chemokine in metastatic tumor progression and their potential role still requires considerable attention.

Higher levels of CCR7 mRNA was detected in cancer tissue compared to the normal counterpart lung tissues, suggesting that CCR7 expression could be used to predict the metastasis of the lymph node before surgery as a diagnostic tool to improve the overall treatment plan for non-small cell lung cancer (NSCLC) [55]. Moreover, the CCR7 presence was directly related to the lymph node metastases development in NSCLC [35]. In addition, the expression of chemokine receptors in clinical samples may help correlate their levels with the outcome of cancer patients. Interestingly, based on the expression status of hormonal receptors, triple-negative breast cancer (TNBC) is associated with poor prognosis, higher metastasis and worse outcomes than other subtypes due to the absence of efficient targeted therapies [130]. In breast cancer tissues, CCR7 has been highly expressed especially in the luminal B-type and TNBC compared to the luminal A type [114,131]. Therefore, tumor microenvironment signals are likely to be interpreted differently in luminal-B cells than those in luminal-A cells. Thus, the tumor microenvironment factors do not inhibit the responsiveness of luminal-B cells to chemotactic cues mediated through the CCR7/CCL21 axis [46].

Several experimental approaches using specific chemokine antagonists, neutralizing antibodies, knockout mice and targeted gene disruptions have been reported to be useful tools for discerning the role of chemokines and their receptors in vivo [132,133]. Therefore, these methods may potentially provide a basis for the development of future therapeutic agents. Studies involving the inhibition of CCR7 expression on cancer cells are yet to be explored at both the in vitro and in vivo level.

5. Therapy and Future Directions

For most chemokine receptors, removing their cytoplasmic tail impairs endocytosis [134,135]. For CCR7, the deletion of the entire cytoplasmic tail did not totally block the receptor endocytosis and recycling but also eliminated the CCL19/CCL21-induced chemotaxis. Indeed, in vivo CCR7 C-terminal partial truncation decreases the receptor internalization, while maintaining the chemotaxis ability to CCR7 ligands [135], and prevents lymphocyte adhesion and extravasation to the HEVs [136]. Additional studies reported that the intra-tumoral injection of recombinant CCL21 significantly delayed tumor progression and stimulated cytotoxic immune responses [85,137]. Moreover, in vitro experiments have demonstrated that blocking the CCR7 receptor decreases the incidence of metastasis [86,121].

Initial reports suggested that CCL21 and CCL19 were anti-tumorigenic, as they could attract lymphocytes that would attack the tumor [79]. However, it has been described that in CCL21-expressing tumors, the chemokines create a tolerogenic environment where the lymphocytes behave similarly to the lymph node stroma [74]. Preliminary studies into the use of CSC vaccines by pulsing DCs with CSC lysates (based on the expression of aldehyde dehydrogenase) to generate B cell-mediated immunity against CSCs in mouse models of melanoma and squamous cell carcinoma have been conducted. The application of the DC vaccine reduced the development of primary tumors and metastasis and interestingly, this was associated with a significant decrease in the expression of CCR7 and its ligand CCL21 [138]. Therefore, the inhibition of CCR7 may potentially be used in combination with conventional chemotherapeutics in a multipronged approach to eliminate both rapidly dividing bulk tumor cells and quiescent stem-like cells.

The function of CCR7/CCL21 in cancer appears to be controversial; it may play a pro- or anti-tumor function depending on where it is expressed. In tumor cells, it induces development and progression, whereas when expressed by immune cells such as dendritic or T cells, anti-tumor responses are detected [91]. Moreover, the response of the host to recognize poorly immunogenic tumors is one of the challenges in developing cancer immunotherapy. DCs are bone-marrow-generated leukocytes with high levels of MHC expression and co-stimulatory molecules [139]. Their ability to consume, process and present antigens, combined with their ability to activate and expand antigen-specific T cells, make them a promising target for the development of cancer immunotherapy strategies [140]. Recent studies in cancer immunotherapy have investigated the use of WT CCL21 as a chemoattractant of dendritic and T cells to the tumor [141]. For example, the FDA has approved immunotherapy using DCs against metastatic, asymptomatic prostate cancer [142]. The vaccine was considered safe and showed an encouraging response to the tumor although these trials are still underway [143,144]. A more advanced delivery system using immunocompetent mice was used to evaluate this either by encoding CCL21 in an adeno-recombinant associated virus to enable its transduction following the intra-tumoral implant [145], or only by directly injecting CCL21 into the tumor cells, both resulting in reduced tumor development [146]. Another alternative is to inject exaggerated CCL21-transduced DCs or fibroblasts that mediate the functional differentiation and recruitment of innate and adaptive immune cells into the tumor, which has been shown to destroy cancer cells [147]. In summary, the dual roles of the CCR7/CCL21 axis in protective immunity and tumor promotion suggest that their targeted therapies must be carefully evaluated.

This comprehensive review provided an insight into chemokine-mediated mechanisms performed in breast cancer cells both *in vitro* and *in vivo*, specifically CCR7; there are still important questions that remain to be answered. It will be valuable to gain a broader understanding of the functional role of chemokines and their receptors in different cancers other than breast cancer. In addition, given the complex process of metastasis, it is likely that chemokine receptors may function at several steps and therefore, the use of specific *in vivo* models may assist in elucidating the precise stage at which chemokines and their receptors influence the metastatic pathway. Finally, it would be recommended to examine the effect of chemokine receptor expression on the growth of primary tumors using an orthotopic cancer model to verify the precise role of chemokines during metastasis. The understanding of chemokine-mediated pathways and consequently, their potential disruption may provide useful information for the design of new strategies to treat breast cancer.

6. Conclusions

In recent decades, there have been vast advances in our knowledge regarding the roles of the chemokines in cancer progression. In addition, most chemokines have been reported to act as promoting factors for tumor growth and proliferation, angiogenesis and metastasis. This could be due to the promiscuity of chemokine and chemokine receptor interactions in cancer cells.

Participation in cancer cell invasion, metastases and tumor development was reported with the CC Chemokine receptor 7 (CCR7). CCR7 and its receptors have been particularly reported to stimulate the tumorigenesis of breast cancer. It also played a novel role in inducing lymphangiogenesis in the experimental model of breast cancer. It was also accompanied with EMT in human breast carcinoma. Furthermore, CCR7 has been involved in the metastasis of the lymph nodes, invasion, migration and EMT. Findings showed that the EMT progression in breast cancer cells was controlled by the CCL19/CCR7 axis and facilitated the invasion and migration process of tumor cells by triggering several signaling pathways. On the basis of this review, CCR7 has a critical role in breast cancer progression. Thus, it might be elucidating that CCR7 could be a novel target for tumor therapy when used in combination with chemotherapy or immune checkpoint therapy. For verification of CCR7 and its ligands as a therapeutic target for breast cancer progression, further studies are required to illustrate their function and the mechanism of their actions involved in breast cancer progression.

Author Contributions: M.I.M. conceptualized the manuscript. B.R. wrote the initial draft and revised subsequent drafts. M.I.M. reviewed and edited the manuscript prior to submission. All authors have read and agreed to the published version of the manuscript.

Funding: Research of Malki's Lab has been supported by grants from Qatar University: QUCG-CMED-20/21-3, QUST-1-CMED-2019-23 and QUST-1-CMED-2020-13.

Acknowledgments: We are thankful to Shifa Rostom for her critical reading of the manuscript. The publication of this article was funded by the Qatar National Library.

Conflicts of Interest: The authors declare no conflict of interest.

References

1. Baggiolini, M. Chemokines and leukocyte traffic. *Nature* **1998**, *392*, 565–568. [[CrossRef](#)]
2. Rossi, D.; Zlotnik, A. The biology of chemokines and their receptors. *Annu. Rev. Immunol.* **2000**, *18*, 217–242. [[CrossRef](#)]
3. Bachelier, F.; Graham, G.J.; Locati, M.; Mantovani, A.; Murphy, P.M.; Nibbs, R.; Rot, A.; Sozzani, S.; Thelen, M. An atypical addition to the chemokine receptor nomenclature: IUPHAR Review 15. *Br. J. Pharmacol.* **2015**, *172*, 3945–3949. [[CrossRef](#)]
4. Sánchez-Madrid, F.; Del Pozo, M.A. Leukocyte polarization in cell migration and immune interactions. *EMBO* **1999**, *18*, 501–511. [[CrossRef](#)]
5. Turner, M.D.; Nedjai, B.; Hurst, T.; Pennington, D.J. Cytokines and chemokines: At the crossroads of cell signalling and inflammatory disease. *BBA* **2014**, *1843*, 2563–2582. [[CrossRef](#)]
6. Sozzani, S.; Allavena, P.; D'Amico, G.; Luini, W.; Bianchi, G.; Kataura, M.; Imai, T.; Yoshie, O.; Bonecchi, R.; Mantovani, A. Cutting edge: Differential regulation of chemokine receptors during dendritic cell maturation: A model for their trafficking properties. *Immunology* **1998**, *161*, 1083–1086.
7. Forster, R.; Emrich, T.; Kremmer, E.; Lipp, M. Expression of the G-protein-coupled receptor BLR1 defines mature, recirculating B cells and a subset of T-helper memory cells. *Blood* **1994**, *84*, 830–840. [[CrossRef](#)]
8. Heydtmann, M.; Adams, D. Understanding selective trafficking of lymphocyte subsets. *Gut* **2002**, *50*, 150–152. [[CrossRef](#)]
9. Geissmann, F.; Jung, S.; Littman, D.R. Blood monocytes consist of two principal subsets with distinct migratory properties. *Immunity* **2003**, *19*, 71–82. [[CrossRef](#)]
10. Zlotnik, A.; Burkhardt, A.M.; Homey, B. Homeostatic chemokine receptors and organ-specific metastasis. *Nat. Rev. Immunol.* **2011**, *11*, 597–606. [[CrossRef](#)]
11. Griffith, J.W.; Sokol, C.L.; Luster, A.D. Chemokines and chemokine receptors: Positioning cells for host defense and immunity. *Annu. Rev. Immunol.* **2014**, *32*, 659–702. [[CrossRef](#)] [[PubMed](#)]
12. Blanchet, X.; Langer, M.; Weber, C.; Koenen, R.R.; von Hundelshausen, P. Touch of chemokines. *Front. Immunol.* **2012**, *3*, 175. [[CrossRef](#)] [[PubMed](#)]
13. Stone, M.J.; Hayward, J.A.; Huang, C.E.; Huma, Z.; Sanchez, J. Mechanisms of regulation of the chemokine-receptor network. *Int. J. Mol. Med.* **2017**, *18*, 342.
14. Nagarsheth, N.; Wicha, M.S.; Zou, W. Chemokines in the cancer microenvironment and their relevance in cancer immunotherapy. *Nat. Rev. Immunol.* **2017**, *17*, 559. [[CrossRef](#)]
15. Tanaka, T.; Bai, Z.; Srinoulprasert, Y.; Yang, B.; Hayasaka, H.; Miyasaka, M. Chemokines in tumor progression and metastasis. *Cancer Sci.* **2005**, *96*, 317–322. [[CrossRef](#)]
16. Zhou, J.; Xiang, Y.; Yoshimura, T.; Chen, K.; Gong, W.; Huang, J.; Zhou, Y.; Yao, X.; Bian, X.; Wang, J.M. The role of chemoattractant receptors in shaping the tumor microenvironment. *BioMed Res. Int.* **2014**, *2014*, 751392. [[CrossRef](#)]
17. Sarvaiya, P.J.; Guo, D.; Ulasov, I.; Gabikian, P.; Lesniak, M.S. Chemokines in tumor progression and metastasis. *Oncotarget* **2013**, *4*, 2171. [[CrossRef](#)]
18. Müller, A.; Homey, B.; Soto, H.; Ge, N.; Catron, D.; Buchanan, M.E.; McClanahan, T.; Murphy, E.; Yuan, W.; Wagner, S.N. Involvement of chemokine receptors in breast cancer metastasis. *Nature* **2001**, *410*, 50–56. [[CrossRef](#)] [[PubMed](#)]
19. Morris, V.L.; MacDonald, I.C.; Koop, S.; Schmidt, E.E.; Chambers, A.F.; Groom, A.C. Early interactions of cancer cells with the microvasculature in mouse liver and muscle during hematogenous metastasis: Videomicroscopic analysis. *Clin. Exp. Metastasis* **1993**, *11*, 377–390. [[CrossRef](#)] [[PubMed](#)]

20. Lazennec, G.; Richmond, A. Chemokines and chemokine receptors: New insights into cancer-related inflammation. *Trends Mol. Med.* **2010**, *16*, 133–144. [[CrossRef](#)] [[PubMed](#)]
21. Kruizinga, R.C.; Bestebroer, J.; Berghuis, P.; de Haas, C.J.; Links, T.P.; de Vries, E.G.; Walenkamp, A.M. Role of chemokines and their receptors in cancer. *Curr. Pharm. Des.* **2009**, *15*, 3396–3416. [[CrossRef](#)]
22. Schneider, M.A.; Meingassner, J.G.; Lipp, M.; Moore, H.D.; Rot, A. CCR7 is required for the in vivo function of CD4+ CD25+ regulatory T cells. *J. Exp. Med.* **2007**, *204*, 735–745. [[CrossRef](#)] [[PubMed](#)]
23. Campbell, J.J.; Murphy, K.E.; Kunkel, E.J.; Brightling, C.E.; Soler, D.; Shen, Z.; Boisvert, J.; Greenberg, H.B.; Vierra, M.A.; Goodman, S.B. CCR7 expression and memory T cell diversity in humans. *Immunology* **2001**, *166*, 877–884. [[CrossRef](#)] [[PubMed](#)]
24. Pereira, J.P.; Kelly, L.M.; Cyster, J.G. Finding the right niche: B-cell migration in the early phases of T-dependent antibody responses. *Int. Immunol.* **2010**, *22*, 413–419. [[CrossRef](#)] [[PubMed](#)]
25. Sánchez-Sánchez, N.; Riol-Blanco, L.; de la Rosa, G.; Puig-Kröger, A.; García-Bordas, J.; Martín, D.; Longo, N.; Cuadrado, A.; Cabanas, C.; Corbí, A.L. Chemokine receptor CCR7 induces intracellular signaling that inhibits apoptosis of mature dendritic cells. *Blood* **2004**, *104*, 619–625. [[CrossRef](#)] [[PubMed](#)]
26. Yoshida, R.; Nagira, M.; Kitaura, M.; Imagawa, N.; Imai, T.; Yoshie, O. Secondary lymphoid-tissue chemokine is a functional ligand for the CC chemokine receptor CCR7. *J. Biol. Chem.* **1998**, *273*, 7118–7122. [[CrossRef](#)] [[PubMed](#)]
27. Britschgi, M.R.; Favre, S.; Luther, S.A. CCL21 is sufficient to mediate DC migration, maturation and function in the absence of CCL19. *Eur. J. Immunol.* **2010**, *40*, 1266–1271. [[CrossRef](#)]
28. Otero, C.; Groettrup, M.; Legler, D.F. Opposite fate of endocytosed CCR7 and its ligands: Recycling versus degradation. *Immunology* **2006**, *177*, 2314–2323. [[CrossRef](#)]
29. Kohout, T.A.; Nicholas, S.L.; Perry, S.J.; Reinhart, G.; Junger, S.; Struthers, R.S. Differential desensitization, receptor phosphorylation, β -arrestin recruitment, and ERK1/2 activation by the two endogenous ligands for the CC chemokine receptor 7. *J. Biol. Chem.* **2004**, *279*, 23214–23222. [[CrossRef](#)] [[PubMed](#)]
30. Schaeuble, K.; Hauser, M.A.; Rippl, A.V.; Bruderer, R.; Otero, C.; Groettrup, M.; Legler, D.F. Ubiquitylation of the chemokine receptor CCR7 enables efficient receptor recycling and cell migration. *J. Cell Sci.* **2012**, *125*, 4463–4474. [[CrossRef](#)] [[PubMed](#)]
31. Cunningham, H.D.; Shannon, L.A.; Calloway, P.A.; Fassold, B.C.; Dunwiddie, I.; Vielhauer, G.; Zhang, M.; Vines, C.M. Expression of the CC chemokine receptor 7 mediates metastasis of breast cancer to the lymph nodes in mice. *Transl. Oncol.* **2010**, *3*, 354–361. [[CrossRef](#)]
32. Mashino, K.; Sadanaga, N.; Yamaguchi, H.; Tanaka, F.; Ohta, M.; Shibuta, K.; Inoue, H.; Mori, M. Expression of chemokine receptor CCR7 is associated with lymph node metastasis of gastric carcinoma. *Cancer Res.* **2002**, *62*, 2937–2941. [[PubMed](#)]
33. Shields, J.; Emmett, M.; Dunn, D.; Joory, K.; Sage, L.; Rigby, H.; Mortimer, P.; Orlando, A.; Levick, J.; Bates, D. Chemokine-mediated migration of melanoma cells towards lymphatics—a mechanism contributing to metastasis. *Oncogene* **2007**, *26*, 2997–3005. [[CrossRef](#)] [[PubMed](#)]
34. Wang, J.; Zhang, X.; Thomas, S.M.; Grandis, J.R.; Wells, A.; Ferris, R.L. Chemokine receptor 7 activates phosphoinositide-3 kinase-mediated invasive and prosurvival pathways in head and neck cancer cells independent of EGFR. *Oncogene* **2005**, *24*, 5897–5904. [[CrossRef](#)] [[PubMed](#)]
35. Koizumi, K.; Kozawa, Y.; Ohashi, Y.; Nakamura, E.S.; Aozuka, Y.; Sakurai, H.; Ichiki, K.; Doki, Y.; Misaki, T.; Saiki, I. CCL21 promotes the migration and adhesion of highly lymph node metastatic human non-small cell lung cancer Lu-99 in vitro. *Oncol. Rep.* **2007**, *17*, 1511–1516. [[CrossRef](#)] [[PubMed](#)]
36. Ding, Y.; Shimada, Y.; Maeda, M.; Kawabe, A.; Kaganoi, J.; Komoto, I.; Hashimoto, Y.; Miyake, M.; Hashida, H.; Imamura, M. Association of CC chemokine receptor 7 with lymph node metastasis of esophageal squamous cell carcinoma. *Clinical Cancer Res.* **2003**, *9*, 3406–3412.
37. Schimanski, C.C.; Bahre, R.; Gockel, I.; Junginger, T.; Simiantonaki, N.; Biesterfeld, S.; Achenbach, T.; Wehler, T.; Galle, P.R.; Moehler, M. Chemokine receptor CCR7 enhances intrahepatic and lymphatic dissemination of human hepatocellular cancer. *Oncol. Rep.* **2006**, *16*, 109–113. [[CrossRef](#)]
38. Kodama, J.; Kusumoto, T.; Seki, N.; Matsuo, T.; Ojima, Y.; Nakamura, K.; Hongo, A.; Hiramatsu, Y. Association of CXCR4 and CCR7 chemokine receptor expression and lymph node metastasis in human cervical cancer. *Ann. Oncol.* **2007**, *18*, 70–76. [[CrossRef](#)]
39. Sancho, M.; Vieira, J.M.; Casalou, C.; Mesquita, M.; Pereira, T.; Cavaco, B.M.; Dias, S.; Leite, V. Expression and function of the chemokine receptor CCR7 in thyroid carcinomas. *Endocrinology* **2006**, *191*, 229–238. [[CrossRef](#)]

40. Pitkin, L.; Luangdilok, S.; Corbishley, C.; Wilson, P.; Dalton, P.; Bray, D.; Mady, S.; Williamson, P.; Odutoye, T.; Evans, P.R. Expression of CC chemokine receptor 7 in tonsillar cancer predicts cervical nodal metastasis, systemic relapse and survival. *Br. J. Cancer* **2007**, *97*, 670–677. [[CrossRef](#)]
41. Günther, K.; Leier, J.; Henning, G.; Dimmler, A.; Weißbach, R.; Hohenberger, W.; Förster, R. Prediction of lymph node metastasis in colorectal carcinoma by expression of chemokine receptor CCR7. *Int. J. Cancer* **2005**, *116*, 726–733. [[CrossRef](#)] [[PubMed](#)]
42. Heresi, G.A.; Wang, J.; Taichman, R.; Chirinos, J.A.; Regalado, J.J.; Lichtstein, D.M.; Rosenblatt, J.D. Expression of the chemokine receptor CCR7 in prostate cancer presenting with generalized lymphadenopathy: Report of a case, review of the literature, and analysis of chemokine receptor expression. *Urol. Oncol.* **2005**, *23*, 261–267. [[CrossRef](#)] [[PubMed](#)]
43. Xiong, Y.; Huang, F.; Li, X.; Chen, Z.; Feng, D.; Jiang, H.; Chen, W.; Zhang, X. CCL21/CCR7 interaction promotes cellular migration and invasion via modulation of the MEK/ERK1/2 signaling pathway and correlates with lymphatic metastatic spread and poor prognosis in urinary bladder cancer. *Int. J. Oncol.* **2017**, *51*, 75–90. [[CrossRef](#)] [[PubMed](#)]
44. Tutunea-Fatan, E.; Majumder, M.; Xin, X.; Lala, P.K. The role of CCL21/CCR7 chemokine axis in breast cancer-induced lymphangiogenesis. *Mol. Cancer* **2015**, *14*, 35. [[CrossRef](#)] [[PubMed](#)]
45. Xu, B.; Zhou, M.; Qiu, W.; Ye, J.; Feng, Q. CCR7 mediates human breast cancer cell invasion, migration by inducing epithelial–mesenchymal transition and suppressing apoptosis through AKT pathway. *Cancer Med.* **2017**, *6*, 1062–1071. [[CrossRef](#)] [[PubMed](#)]
46. Weitzenfeld, P.; Kossover, O.; Körner, C.; Meshel, T.; Wiemann, S.; Seliktar, D.; Legler, D.F.; Ben-Baruch, A. Chemokine axes in breast cancer: Factors of the tumor microenvironment reshape the CCR7-driven metastatic spread of luminal-A breast tumors. *J. Leukoc. Biol.* **2016**, *99*, 1009–1025. [[CrossRef](#)]
47. Mo, M.; Zhou, M.; Wang, L.; Qi, L.; Zhou, K.; Liu, L.-F.; Chen, Z.; Zu, X.-B. CCL21/CCR7 enhances the proliferation, migration, and invasion of human bladder cancer T24 cells. *PLoS ONE* **2015**, *10*, e0119506. [[CrossRef](#)]
48. Li, J.; Sun, R.; Tao, K.; Wang, G. The CCL21/CCR7 pathway plays a key role in human colon cancer metastasis through regulation of matrix metalloproteinase-9. *Dig. Liver Dis.* **2011**, *43*, 40–47. [[CrossRef](#)]
49. Sun, R.H.; Wang, G.B.; Li, J.; Cui, J. Role of CCL21/CCR7 in invasion of colorectal carcinoma cell line SW480. *CJC* **2009**, *28*, 708–713. [[CrossRef](#)]
50. Schimanski, C.C.; Schwald, S.; Simiantonaki, N.; Jayasinghe, C.; Gönner, U.; Wilsberg, V.; Junginger, T.; Berger, M.R.; Galle, P.R.; Moehler, M. Effect of chemokine receptors CXCR4 and CCR7 on the metastatic behavior of human colorectal cancer. *Clinical Cancer Res.* **2005**, *11*, 1743–1750. [[CrossRef](#)]
51. Ma, H.; Gao, L.; Li, S.; Qin, J.; Chen, L.; Liu, X.; Xu, P.; Wang, F.; Xiao, H.; Zhou, S. CCR7 enhances TGF- β 1-induced epithelial-mesenchymal transition and is associated with lymph node metastasis and poor overall survival in gastric cancer. *Oncotarget* **2015**, *6*, 24348. [[CrossRef](#)] [[PubMed](#)]
52. Ryu, H.; Baek, S.W.; Moon, J.Y.; Jo, I.S.; Kim, N.; Lee, H.J. C-C motif chemokine receptors in gastric cancer. *Mol. Clin. Oncol.* **2018**, *8*, 3–8. [[CrossRef](#)] [[PubMed](#)]
53. Al-Jokhadar, M.; Al-Mandily, A.; Zaid, K.; Maalouf, E.A. CCR7 and CXCR4 Expression in Primary Head and Neck Squamous Cell Carcinomas and Nodal Metastases—a Clinical and Immunohistochemical Study. *APJCP* **2017**, *18*, 1093.
54. González-Arriagada, W.A.; Lozano-Burgos, C.; Zúñiga-Moreta, R.; González-Díaz, P.; Coletta, R.D. Clinicopathological significance of chemokine receptor (CCR 1, CCR 3, CCR 4, CCR 5, CCR 7 and CXCR 4) expression in head and neck squamous cell carcinomas. *J. Oral Pathol. Med.* **2018**, *47*, 755–763. [[CrossRef](#)]
55. Sun, L.; Zhang, Q.; Li, Y.; Tang, N.; Qiu, X. CCL21/CCR7 up-regulate vascular endothelial growth factor-D expression via ERK pathway in human non-small cell lung cancer cells. *Int. J. Clin. Exp. Pathol.* **2015**, *8*, 15729. [[PubMed](#)]
56. Zhong, G.; Chen, L.; Yin, R.; Qu, Y.; Bao, Y.; Xiao, Q.; Zhang, Z.; Shen, Y.; Li, C.; Xu, Y. Chemokine (C-C motif) ligand 21/C-C chemokine receptor type 7 triggers migration and invasion of human lung cancer cells by epithelial-mesenchymal transition via the extracellular signal-regulated kinase signaling pathway. *Mol. Med. Rep.* **2017**, *15*, 4100–4108. [[CrossRef](#)] [[PubMed](#)]
57. Yang, J.; Wang, S.; Zhao, G.; Sun, B. Effect of chemokine receptors CCR7 on disseminated behavior of human T cell lymphoma: Clinical and experimental study. *J. Exp. Clin. Cancer Res.* **2011**, *30*, 51. [[CrossRef](#)] [[PubMed](#)]

58. Fleige, H.; Bosnjak, B.; Permanyer, M.; Ristenpart, J.; Bubke, A.; Willenzon, S.; Sutter, G.; Luther, S.A.; Förster, R. Manifold roles of CCR7 and its ligands in the induction and maintenance of bronchus-associated lymphoid tissue. *Cell Rep.* **2018**, *23*, 783–795. [[CrossRef](#)]
59. Cristiani, C.; Tallerico, R.; Ventura, V.; Capone, M.; Madonna, G.; Mallardo, D.; Selinger, E.; Garofalo, C.; Staaf, E.; Simeone, E. Monitoring of melanoma clinical progression by circulating NK and T cells immunoprofiling: A potential role for CCR7 in metastatic spread. *J. Transl. Med.* **2018**. [[CrossRef](#)]
60. Cai, Q.-Y.; Liang, G.-Y.; Zheng, Y.-F.; Tan, Q.-Y.; Wang, R.-W.; Li, K. CCR7 enhances the angiogenic capacity of esophageal squamous carcinoma cells in vitro via activation of the NF- κ B/VEGF signaling pathway. *Am. J. Transl. Res.* **2017**, *9*, 3282.
61. Goto, M.; Liu, M. Chemokines and their receptors as biomarkers in esophageal cancer. *Esophagus* **2019**, 1–9. [[CrossRef](#)]
62. Shi, M.; Chen, D.; Yang, D.; Liu, X.-y. CCL21-CCR7 promotes the lymph node metastasis of esophageal squamous cell carcinoma by up-regulating MUC1. *J. Exp. Clin. Cancer Res.* **2015**, *34*, 149. [[CrossRef](#)] [[PubMed](#)]
63. Makino, T.; Izumi, K.; Maolake, A.; Natsagdorj, A.; Iwamoto, H.; Kadomoto, S.; Naito, R.; Hiratsuka, K.; Kadono, Y.; Mizokami, A. Tumor necrosis factor- α upregulation of CCR7 induces prostate cancer cell migration in lymphatic metastasis. *AACR* **2019**. [[CrossRef](#)]
64. Maolake, A.; Izumi, K.; Natsagdorj, A.; Iwamoto, H.; Kadomoto, S.; Makino, T.; Naito, R.; Shigehara, K.; Kadono, Y.; Hiratsuka, K. Tumor necrosis factor- α induces prostate cancer cell migration in lymphatic metastasis through CCR7 upregulation. *Cancer Sci.* **2018**, *109*, 1524–1531. [[CrossRef](#)] [[PubMed](#)]
65. Even-Ram, S.; Yamada, K.M. Cell migration in 3D matrix. *Curr. Opin. Cell Biol.* **2005**, *17*, 524–532. [[CrossRef](#)] [[PubMed](#)]
66. Ley, K.; Laudanna, C.; Cybulsky, M.I.; Nourshargh, S. Getting to the site of inflammation: The leukocyte adhesion cascade updated. *Nat. Rev. Immunol.* **2007**, *7*, 678–689. [[CrossRef](#)] [[PubMed](#)]
67. Chan, C.E.; Odde, D.J. Traction dynamics of filopodia on compliant substrates. *Science* **2008**, *322*, 1687–1691. [[CrossRef](#)]
68. Proudfoot, A.E.; Handel, T.M.; Johnson, Z.; Lau, E.K.; LiWang, P.; Clark-Lewis, I.; Borlat, F.; Wells, T.N.; Kosco-Vilbois, M.H. Glycosaminoglycan binding and oligomerization are essential for the in vivo activity of certain chemokines. *Proc. Nat. Acad. Sci.* **2003**, *100*, 1885–1890. [[CrossRef](#)]
69. Schumann, K.; Lämmermann, T.; Bruckner, M.; Legler, D.F.; Polleux, J.; Spatz, J.P.; Schuler, G.; Förster, R.; Lutz, M.B.; Sorokin, L. Immobilized chemokine fields and soluble chemokine gradients cooperatively shape migration patterns of dendritic cells. *Immunity* **2010**, *32*, 703–713. [[CrossRef](#)]
70. Nandagopal, S.; Wu, D.; Lin, F. Combinatorial guidance by CCR7 ligands for T lymphocytes migration in co-existing chemokine fields. *PLoS ONE* **2011**, *6*, e18183. [[CrossRef](#)]
71. Legler, D.F.; Uetz-von Allmen, E.; Hauser, M.A. CCR7: Roles in cancer cell dissemination, migration and metastasis formation. *Int. J. Biochem. Cell Biol.* **2014**, *54*, 78–82.
72. He, Y.; Karpanen, T.; Alitalo, K. Role of lymphangiogenic factors in tumor metastasis. *BBA-REV. CANCER* **2004**, *1654*, 3–12. [[CrossRef](#)] [[PubMed](#)]
73. Shields, J.D.; Fleury, M.E.; Yong, C.; Tomei, A.A.; Randolph, G.J.; Swartz, M.A. Autologous chemotaxis as a mechanism of tumor cell homing to lymphatics via interstitial flow and autocrine CCR7 signaling. *Cancer Cell* **2007**, *11*, 526–538. [[CrossRef](#)]
74. Shields, J.D.; Kourtis, I.C.; Tomei, A.A.; Roberts, J.M.; Swartz, M.A. Induction of lymphoidlike stroma and immune escape by tumors that express the chemokine CCL21. *Science* **2010**, *328*, 749–752. [[CrossRef](#)] [[PubMed](#)]
75. Raman, D.; Baugher, P.J.; Thu, Y.M.; Richmond, A. Role of chemokines in tumor growth. *Cancer Lett.* **2007**, *256*, 137–165. [[CrossRef](#)] [[PubMed](#)]
76. Correale, P.; Rotundo, M.S.; Botta, C.; Del Vecchio, M.T.; Tassone, P.; Tagliaferri, P. Tumor infiltration by chemokine receptor 7 (CCR7)+ T-lymphocytes is a favorable prognostic factor in metastatic colorectal cancer. *Oncoimmunology* **2012**, *1*, 531–532. [[CrossRef](#)]
77. Sperveslage, J.; Frank, S.; Heneweer, C.; Egberts, J.; Schniewind, B.; Buchholz, M.; Bergmann, F.; Giese, N.; Munding, J.; Hahn, S.A. Lack of CCR7 expression is rate limiting for lymphatic spread of pancreatic ductal adenocarcinoma. *Int. J. Cancer* **2012**, *131*, E371–E381. [[CrossRef](#)]

78. He, Y.; Rajantie, I.; Pajusola, K.; Jeltsch, M.; Holopainen, T.; Yla-Herttuala, S.; Harding, T.; Jooss, K.; Takahashi, T.; Alitalo, K. Vascular endothelial cell growth factor receptor 3-mediated activation of lymphatic endothelium is crucial for tumor cell entry and spread via lymphatic vessels. *Cancer Res.* **2005**, *65*, 4739–4746. [[CrossRef](#)]
79. Vicari, A.P.; Ait-Yahia, S.; Chemin, K.; Mueller, A.; Zlotnik, A.; Caux, C. Antitumor effects of the mouse chemokine 6Ckine/SLC through angiostatic and immunological mechanisms. *Immunology* **2000**, *165*, 1992–2000. [[CrossRef](#)]
80. Luker, K.E.; Luker, G.D. Functions of CXCL12 and CXCR4 in breast cancer. *Cancer Lett.* **2006**, *238*, 30–41. [[CrossRef](#)]
81. Cabioglu, N.; Yazici, M.S.; Arun, B.; Broglio, K.R.; Hortobagyi, G.N.; Price, J.E.; Sahin, A. CCR7 and CXCR4 as novel biomarkers predicting axillary lymph node metastasis in T1 breast cancer. *Clin. Cancer Res.* **2005**, *11*, 5686–5693. [[CrossRef](#)] [[PubMed](#)]
82. Kochetkova, M.; Kumar, S.; McColl, S. Chemokine receptors CXCR4 and CCR7 promote metastasis by preventing anoikis in cancer cells. *Cell Death Differ.* **2009**, *16*, 664–673. [[CrossRef](#)]
83. Wilson, J.L.; Burchell, J.; Grimshaw, M.J. Endothelins induce CCR7 expression by breast tumor cells via endothelin receptor A and hypoxia-inducible factor-1. *Cancer Res.* **2006**, *66*, 11802–11807. [[CrossRef](#)] [[PubMed](#)]
84. Mori, T.; Kim, J.; Yamano, T.; Takeuchi, H.; Huang, S.; Umetani, N.; Koyanagi, K.; Hoon, D.S. Epigenetic up-regulation of CC chemokine receptor 7 and CXC chemokine receptor 4 expression in melanoma cells. *Cancer Res.* **2005**, *65*, 1800–1807. [[CrossRef](#)] [[PubMed](#)]
85. Wu, S.; Lu, X.; Zhang, Z.; Lei, P.; Hu, P.; Wang, M.; Huang, B.; Xing, W.; Jiang, X.; Liu, H. CC chemokine ligand 21 enhances the immunogenicity of the breast cancer cell line MCF-7 upon assistance of TLR2. *Carcinogenesis* **2011**, *32*, 296–304. [[CrossRef](#)]
86. Chen, Y.; Stamatoyannopoulos, G.; Song, C.-Z. Down-regulation of CXCR4 by inducible small interfering RNA inhibits breast cancer cell invasion in vitro. *Cancer Res.* **2003**, *63*, 4801–4804.
87. Hattermann, K.; Gebhardt, H.; Krossa, S.; Ludwig, A.; Lucius, R.; Held-Feindt, J.; Mentlein, R. Transmembrane chemokines act as receptors in a novel mechanism termed inverse signaling. *Elife* **2016**, *5*, e10820. [[CrossRef](#)]
88. Lacalle, R.A.; Blanco, R.; Carmona-Rodriguez, L.; Martin-Leal, A.; Mira, E.; Manes, S. Chemokine receptor signaling and the hallmarks of cancer. *Int. Rev. Cell Mol. Biol.* **2017**, *331*, 181–244.
89. Wang, J.; Knaut, H. Chemokine signaling in development and disease. *Development* **2014**, *141*, 4199–4205. [[CrossRef](#)]
90. Curnock, A.P.; Logan, M.K.; Ward, S.G. Chemokine signalling: Pivoting around multiple phosphoinositide 3-kinases. *Immunology* **2002**, *105*, 125–136. [[CrossRef](#)]
91. Bonocchi, R.; Mollica Poeta, V.; Capucetti, A.; Massara, M. Chemokines and chemokine receptors: New targets for cancer immunotherapy. *Front. Immunol.* **2019**, *10*, 379.
92. Kehrl, J.H. Chemoattractant receptor signaling and the control of lymphocyte migration. *Immunol. Res.* **2006**, *34*, 211–227. [[CrossRef](#)]
93. Legler, D.F.; Thelen, M. New insights in chemokine signaling. *F1000 Res.* **2018**, *7*. [[CrossRef](#)] [[PubMed](#)]
94. Kobayashi, D.; Endo, M.; Ochi, H.; Hojo, H.; Miyasaka, M.; Hayasaka, H. Regulation of CCR7-dependent cell migration through CCR7 homodimer formation. *Sci. Rep.* **2017**, *7*, 1–14. [[CrossRef](#)]
95. Lu, Y.; Wang, H.; Mills, G.B. Targeting PI3K-AKT pathway for cancer therapy. *Rev Clin Exp Hematol.* **2003**, *7*, 205–228. [[PubMed](#)]
96. Sotsios, Y.; Ward, S.G. Phosphoinositide 3-kinase: A key biochemical signal for cell migration in response to chemokines. *Immunol. Rev.* **2000**, *177*, 217–235. [[CrossRef](#)] [[PubMed](#)]
97. Rolin, J.; Maghazachi, A.A. Implications of chemokine receptors and inflammatory lipids in cancer. *ImmunoTargets Ther.* **2014**, *3*, 9.
98. Wong, M.; Fish, E.N. RANTES and MIP-1 α activate stats in T cells. *J. Biol. Chem.* **1998**, *273*, 309–314. [[CrossRef](#)]
99. Miyagaki, T.; Sugaya, M.; Murakami, T.; Asano, Y.; Tada, Y.; Kadono, T.; Okochi, H.; Tamaki, K.; Sato, S. CCL11-CCR3 interactions promote survival of anaplastic large cell lymphoma cells via ERK1/2 activation. *Cancer Res.* **2011**, *71*, 2056–2065. [[CrossRef](#)]
100. Brust, T.F.; Conley, J.M.; Watts, V.J. G α i/o-coupled receptor-mediated sensitization of adenylyl cyclase: 40 years later. *Eur. J. Pharmacol.* **2015**, *763*, 223–232. [[CrossRef](#)]

101. Neves, S.R.; Ram, P.T.; Iyengar, R. G protein pathways. *Science* **2002**, *296*, 1636–1639. [[CrossRef](#)] [[PubMed](#)]
102. Watts, A.O.; Verkaar, F.; van der Lee, M.M.; Timmerman, C.A.; Kuijter, M.; van Offenbeek, J.; Van Lith, L.H.; Smit, M.J.; Leurs, R.; Zaman, G.J. β -Arrestin recruitment and G protein signaling by the atypical human chemokine decoy receptor CCX-CKR. *J. Biol. Chem.* **2013**, *288*, 7169–7181. [[CrossRef](#)] [[PubMed](#)]
103. López-Giral, S.; Quintana, N.E.; Cabrerizo, M.; Alfonso-Pérez, M.; Sala-Valdés, M.; de Soria, V.G.G.; Fernández-Rañada, J.M.; Fernández-Ruiz, E.; Muñoz, C. Chemokine receptors that mediate B cell homing to secondary lymphoid tissues are highly expressed in B cell chronic lymphocytic leukemia and non-Hodgkin lymphomas with widespread nodular dissemination. *J. Leukoc. Biol.* **2004**, *76*, 462–471. [[CrossRef](#)] [[PubMed](#)]
104. Zhou, S.-L.; Zhou, Z.-J.; Hu, Z.-Q.; Li, X.; Huang, X.-W.; Wang, Z.; Fan, J.; Dai, Z.; Zhou, J. CXCR2/CXCL5 axis contributes to epithelial–mesenchymal transition of HCC cells through activating PI3K/Akt/GSK-3 β /Snail signaling. *Cancer Lett.* **2015**, *358*, 124–135. [[CrossRef](#)]
105. Raju, R.; Gadakh, S.; Gopal, P.; George, B.; Advani, J.; Soman, S.; Prasad, T.K.; Girijadevi, R. Differential ligand-signaling network of CCL19/CCL21-CCR7 system. *Database* **2015**, *2015*, bav106. [[CrossRef](#)]
106. Sonbul, S.N.; Gorringer, K.L.; Aleskandarany, M.A.; Mukherjee, A.; Green, A.R.; Ellis, I.O.; Rakha, E.A. Chemokine (C-C motif) receptor 7 (CCR7) associates with the tumour immune microenvironment but not progression in invasive breast carcinoma. *J. Pathol.* **2017**, *3*, 105–114. [[CrossRef](#)]
107. Wu, J.; Li, L.; Liu, J.; Wang, Y.; Wang, Z.; Wang, Y.; Liu, W.; Zhou, Z.; Chen, C.; Liu, R. CC chemokine receptor 7 promotes triple-negative breast cancer growth and metastasis. *ABBS* **2018**, *50*, 835–842. [[CrossRef](#)]
108. Al Akoum, C.; Akl, I.; Rouas, R.; Fayyad-Kazan, M.; Falha, L.; Renno, T.; Burny, A.; Lewalle, P.; Fayyad-Kazan, H.; Badran, B. NFAT-1, Sp-1, Sp-3, and miR-21: New regulators of chemokine C receptor 7 expression in mature human dendritic cells. *Hum. Immunol.* **2015**, *76*, 307–317. [[CrossRef](#)]
109. Mburu, Y.K.; Egloff, A.M.; Walker, W.H.; Wang, L.; Seethala, R.R.; Van Waes, C.; Ferris, R.L. Chemokine receptor 7 (CCR7) gene expression is regulated by NF- κ B and activator protein 1 (AP1) in metastatic squamous cell carcinoma of head and neck (SCCHN). *J. Biol. Chem.* **2012**, *287*, 3581–3590. [[CrossRef](#)]
110. Li, C.; Wang, Z.; Chen, Y.; Zhou, M.; Zhang, H.; Chen, R.; Shi, F.; Wang, C.; Rui, Z. Transcriptional silencing of ETS-1 abrogates epithelial-mesenchymal transition resulting in reduced motility of pancreatic cancer cells. *Oncol. Rep.* **2015**, *33*, 559–565. [[CrossRef](#)]
111. Fang, L.-W.; Kao, Y.-H.; Chuang, Y.-T.; Huang, H.-L.; Tai, T.-S. Ets-1 enhances tumor migration through regulation of CCR7 expression. *BMB Rep.* **2019**, *52*, 548. [[CrossRef](#)] [[PubMed](#)]
112. Vahedi, L.; Ghasemi, M.; Yazdani, J.; Ranjbar, S.; Nouri, B.; Alizadeh, A.; Afshar, P. Investigation of CCR7 Marker Expression Using Immunohistochemical Method and Its Association with Clinicopathologic Properties in Patients with Breast Cancer. *Hematology* **2018**, *12*, 103.
113. Zabicki, K.; Colbert, J.A.; Dominguez, F.J.; Gadd, M.A.; Hughes, K.S.; Jones, J.L.; Specht, M.C.; Michaelson, J.S.; Smith, B.L. Breast cancer diagnosis in women \leq 40 versus 50 to 60 years: Increasing size and stage disparity compared with older women over time. *Ann. Surg. Oncol.* **2006**, *13*, 1072–1077. [[CrossRef](#)] [[PubMed](#)]
114. Li, X.; Sun, S.; Li, N.; Gao, J.; Yu, J.; Zhao, J.; Li, M.; Zhao, Z. High expression of CCR7 predicts lymph node metastasis and good prognosis in triple negative breast cancer. *Cell. Physiol. Biochem.* **2017**, *43*, 531–539. [[CrossRef](#)]
115. Gracio, F.; Burford, B.; Gazinska, P.; Mera, A.; Noor, A.M.; Marra, P.; Gillett, C.; Grigoriadis, A.; Pinder, S.; Tutt, A. Splicing imbalances in basal-like breast cancer underpin perturbation of cell surface and oncogenic pathways and are associated with patients' survival. *Sci. Rep.* **2017**, *7*, 1–14. [[CrossRef](#)]
116. Chen, X.; Wu, J.; Huang, H.; Ding, Q.; Liu, X.; Chen, L.; Zha, X.; Liang, M.; He, J.; Zhu, Q. Comparative profiling of triple-negative breast carcinomas tissue glycoproteome by sequential purification of glycoproteins and stable isotope labeling. *Cell. Physiol. Biochem.* **2016**, *38*, 110–121. [[CrossRef](#)]
117. Balkwill, F. Cancer and the chemokine network. *Nat. Rev. Cancer* **2004**, *4*, 540–550. [[CrossRef](#)]
118. Pan, M.-R.; Hou, M.-F.; Chang, H.-C.; Hung, W.-C. Cyclooxygenase-2 up-regulates CCR7 via EP2/EP4 receptor signaling pathways to enhance lymphatic invasion of breast cancer cells. *J. Biol. Chem.* **2008**, *283*, 11155–11163. [[CrossRef](#)]
119. Tamamura, H.; Hori, A.; Kanzaki, N.; Hiramatsu, K.; Mizumoto, M.; Nakashima, H.; Yamamoto, N.; Otaka, A.; Fujii, N. T140 analogs as CXCR4 antagonists identified as anti-metastatic agents in the treatment of breast cancer. *FEBS Lett.* **2003**, *550*, 79–83. [[CrossRef](#)]

120. Andre, F.; Cabioglu, N.; Assi, H.; Sabourin, J.; Delaloge, S.; Sahin, A.; Broglio, K.; Spano, J.; Combadiere, C.; Bucana, C. Expression of chemokine receptors predicts the site of metastatic relapse in patients with axillary node positive primary breast cancer. *Ann. Oncol.* **2006**, *17*, 945–951. [[CrossRef](#)]
121. Liu, Y.; Ji, R.; Li, J.; Gu, Q.; Zhao, X.; Sun, T.; Wang, J.; Li, J.; Du, Q.; Sun, B. Correlation effect of EGFR and CXCR4 and CCR7 chemokine receptors in predicting breast cancer metastasis and prognosis. *J. Exp. Clin. Cancer Res.* **2010**, *29*, 16. [[CrossRef](#)] [[PubMed](#)]
122. Leung, H.-W.; Zhao, S.-M.; Yue, G.G.-L.; Lee, J.K.-M.; Fung, K.-P.; Leung, P.-C.; Tan, N.-H.; Bik-San Lau, C. RA-XII inhibits tumour growth and metastasis in breast tumour-bearing mice via reducing cell adhesion and invasion and promoting matrix degradation. *Sci. Rep.* **2015**, *5*, 16985. [[CrossRef](#)] [[PubMed](#)]
123. Pearson, H.B.; Pouliot, N. Modeling metastasis in vivo. In *Madame Curie Bioscience Database [Internet]*; Landes Bioscience: Austin, TX, USA, 2013.
124. Bähr, A.; Wolf, E. Domestic animal models for biomedical research. *Reprod. Domest. Anim.* **2012**, *47*, 59–71. [[CrossRef](#)] [[PubMed](#)]
125. Salazar, N.; Muñoz, D.; Hoy, J.; Lokeshwar, B.L. Use of shRNA for stable suppression of chemokine receptor expression and function in human cancer cell lines. *Methods Mol. Biol.* **2014**, *1172*, 209–218.
126. Li, F.; Zou, Z.; Suo, N.; Zhang, Z.; Wan, F.; Zhong, G.; Qu, Y.; Ntaka, K.S.; Tian, H. CCL21/CCR7 axis activating chemotaxis accompanied with epithelial–mesenchymal transition in human breast carcinoma. *Med. Oncol.* **2014**, *31*, 180. [[CrossRef](#)]
127. Saur, D.; Seidler, B.; Schneider, G.; Algül, H.; Beck, R.; Senekowitsch–Schmidtke, R.; Schwaiger, M.; Schmid, R.M. CXCR4 expression increases liver and lung metastasis in a mouse model of pancreatic cancer. *Gastroenterology* **2005**, *129*, 1237–1250. [[CrossRef](#)]
128. Takekoshi, T.; Fang, L.; Paragh, G.; Hwang, S.T. CCR7-expressing B16 melanoma cells downregulate interferon- γ -mediated inflammation and increase lymphangiogenesis in the tumor microenvironment. *Oncogenesis* **2012**, *1*, e9. [[CrossRef](#)]
129. Wiley, H.E.; Gonzalez, E.B.; Maki, W.; Wu, M.-t.; Hwang, S.T. Expression of CC chemokine receptor-7 and regional lymph node metastasis of B16 murine melanoma. *J. Natl. Cancer Inst.* **2001**, *93*, 1638–1643. [[CrossRef](#)]
130. Hudis, C.A.; Gianni, L. Triple-negative breast cancer: An unmet medical need. *Oncologist* **2011**, *16*, 1–11. [[CrossRef](#)]
131. Strien, L.; Joensuu, K.; HEIKKILÄ, P.; Leidenius, M.H. Different expression patterns of CXCR4, CCR7, maspin and FOXP3 in luminal breast cancers and their sentinel node metastases. *Anticancer Res.* **2017**, *37*, 175–182. [[CrossRef](#)]
132. Power, C.A. Knock out models to dissect chemokine receptor function in vivo. *J. Immunol. Methods* **2003**, *273*, 73–82. [[CrossRef](#)]
133. Houshmand, P.; Zlotnik, A. Therapeutic applications in the chemokine superfamily. *Curr. Opin. Chem. Biol.* **2003**, *7*, 457–460. [[CrossRef](#)]
134. Richardson, R.M.; Marjoram, R.J.; Barak, L.S.; Snyderman, R. Role of the cytoplasmic tails of CXCR1 and CXCR2 in mediating leukocyte migration, activation, and regulation. *Immunology* **2003**, *170*, 2904–2911. [[CrossRef](#)]
135. Otero, C.; Eisele, P.S.; Schaeuble, K.; Groettrup, M.; Legler, D.F. Distinct motifs in the chemokine receptor CCR7 regulate signal transduction, receptor trafficking and chemotaxis. *J. Cell Sci.* **2008**, *121*, 2759–2767. [[CrossRef](#)] [[PubMed](#)]
136. Stein, J.V.; Rot, A.; Luo, Y.; Narasimhaswamy, M.; Nakano, H.; Gunn, M.D.; Matsuzawa, A.; Quackenbush, E.J.; Dorf, M.E.; von Andrian, U.H. The CC chemokine thymus-derived chemotactic agent 4 (TCA-4, secondary lymphoid tissue chemokine, 6Ckine, exodus-2) triggers lymphocyte function-associated antigen 1-mediated arrest of rolling T lymphocytes in peripheral lymph node high endothelial venules. *J. Exp. Med.* **2000**, *191*, 61–76. [[CrossRef](#)]
137. Yang, S.-C.; Hillinger, S.; Riedl, K.; Zhang, L.; Zhu, L.; Huang, M.; Atianzar, K.; Kuo, B.Y.; Gardner, B.; Batra, R.K. Intratumoral administration of dendritic cells overexpressing CCL21 generates systemic antitumor responses and confers tumor immunity. *Clinical Cancer Res.* **2004**, *10*, 2891–2901. [[CrossRef](#)] [[PubMed](#)]
138. Lu, L.; Tao, H.; Chang, A.E.; Hu, Y.; Shu, G.; Chen, Q.; Egenti, M.; Owen, J.; Moyer, J.S.; Prince, M.E. Cancer stem cell vaccine inhibits metastases of primary tumors and induces humoral immune responses against cancer stem cells. *Oncoimmunology* **2015**, *4*, e990767. [[CrossRef](#)]

139. Banchereau, J.; Steinman, R.M. Dendritic cells and the control of immunity. *Nature* **1998**, *392*, 245–252. [[CrossRef](#)]
140. Timmerman, J.M.; Levy, R. Dendritic cell vaccines for cancer immunotherapy. *Annu. Rev. Med.* **1999**, *50*, 507–529. [[CrossRef](#)]
141. Warnock, R.; Campbell, J.; Dorf, M.; Matsuzawa, A.; McEvoy, L.; Butcher, E. The role of chemokines in the microenvironmental control of T versus B cell arrest in Peyer’s patch high endothelial venules. *J. Exp. Med.* **2000**, *191*, 77–88. [[CrossRef](#)]
142. Hovden, A.O.; Appel, S. The first dendritic cell-based therapeutic cancer vaccine is approved by the FDA. *Scand. J. Immunol.* **2010**, *72*, 554. [[CrossRef](#)] [[PubMed](#)]
143. Lee, J.; Garon, E.; Lee, M.; Baratelli, F.; Wang, G.; Abtin, F.; Suh, R.; Wallace, W.; Zeng, G.; Sharma, S. Phase I trial of trans-thoracic injection of CCL21 gene modified dendritic cells in human non-small cell lung carcinoma. *J. Surg. Res.* **2014**, *186*, 558. [[CrossRef](#)]
144. Lee, J.M.; Lee, M.-H.; Garon, E.; Goldman, J.W.; Salehi-Rad, R.; Baratelli, F.E.; Schaeue, D.; Wang, G.; Rosen, F.; Yanagawa, J. Phase I trial of intratumoral injection of CCL21 gene-modified dendritic cells in lung cancer elicits tumor-specific immune responses and CD8+ T-cell infiltration. *Clin. Cancer Res.* **2017**, *23*, 4556–4568. [[CrossRef](#)] [[PubMed](#)]
145. Liang, C.-m.; Zhong, C.-p.; Sun, R.-x.; Liu, B.-b.; Huang, C.; Qin, J.; Zhou, S.; Shan, J.; Liu, Y.-k.; Ye, S.-l. Local expression of secondary lymphoid tissue chemokine delivered by adeno-associated virus within the tumor bed stimulates strong anti-liver tumor immunity. *Virology* **2007**, *81*, 9502–9511. [[CrossRef](#)]
146. Sharma, S.; Stolina, M.; Luo, J.; Strieter, R.M.; Burdick, M.; Zhu, L.X.; Batra, R.K.; Dubinett, S.M. Secondary lymphoid tissue chemokine mediates T cell-dependent antitumor responses in vivo. *Immunology* **2000**, *164*, 4558–4563. [[CrossRef](#)]
147. Yang, S.-C.; Batra, R.K.; Hillinger, S.; Reckamp, K.L.; Strieter, R.M.; Dubinett, S.M.; Sharma, S. Intrapulmonary administration of CCL21 gene-modified dendritic cells reduces tumor burden in spontaneous murine bronchoalveolar cell carcinoma. *Cancer Res.* **2006**, *66*, 3205–3213. [[CrossRef](#)]



© 2020 by the authors. Licensee MDPI, Basel, Switzerland. This article is an open access article distributed under the terms and conditions of the Creative Commons Attribution (CC BY) license (<http://creativecommons.org/licenses/by/4.0/>).