

# BMJ Open Adolescents' Daily Lives (ADL) project: an intensive longitudinal design study protocol examining the associations between physical literacy, movement behaviours, emotion regulation and mental health

Megan Ames,<sup>1,2</sup> Sharan Srinivasa Gopalan,<sup>3</sup> C Emmett Sihoe,<sup>1</sup> Stephanie G Craig,<sup>4</sup> Mauricio Garcia-Barrera,<sup>1,2</sup> Sam Liu,<sup>2,5</sup> Ryan Rhodes,<sup>3</sup> Jonathan Rush,<sup>1,2</sup> E Jean Buckler <sup>3,5</sup>

**To cite:** Ames M, Srinivasa Gopalan S, Sihoe CE, *et al*. Adolescents' Daily Lives (ADL) project: an intensive longitudinal design study protocol examining the associations between physical literacy, movement behaviours, emotion regulation and mental health. *BMJ Open* 2024;**14**:e094225. doi:10.1136/bmjopen-2024-094225

► Prepublication history and additional supplemental material for this paper are available online. To view these files, please visit the journal online (<https://doi.org/10.1136/bmjopen-2024-094225>).

Received 25 September 2024  
Accepted 25 October 2024



© Author(s) (or their employer(s)) 2024. Re-use permitted under CC BY-NC. No commercial re-use. See rights and permissions. Published by BMJ.

For numbered affiliations see end of article.

## Correspondence to

Dr E Jean Buckler;  
[ejean@uvic.ca](mailto:ejean@uvic.ca)

## ABSTRACT

**Introduction** Adolescence represents a critical developmental period, with changes in emotional regulation capacities influencing physical and mental health. With less than 6% of Canadian youth currently meeting the 24-hour movement guidelines for physical activity, sleep and sedentary behaviour, there is an urgent need to understand the potential association between movement behaviours, physical literacy, emotional regulation and mental health during adolescence. Additionally, there is a need to better understand these associations among equity-deserving groups. We developed the Adolescents' Daily Lives (ADL) project to identify how, when, under what contexts and to whom to promote healthy engagement in movement behaviours to optimise youth mental health.

**Methods and analysis** For the ADL project, we will employ a 14-day intensive longitudinal design to investigate the associations between physical literacy, movement behaviours, emotion regulation and mental health among a diverse sample of 120 adolescents (ages 13–17 years) living in the Greater Victoria Area, British Columbia, Canada. A comprehensive baseline survey and movement competence test, assessing physical and mental well-being, 24-hour movement behaviours (ie, physical activity, sleep and sedentary behaviours) and physical literacy, will be accompanied by daily diary surveys and accelerometer-based movement tracking (ie, Fitbit Inspire 3) to assess daily fluctuations in movement behaviour, emotional regulation and mood. Multivariate analyses, including multilevel modelling, multilevel structural equation modelling and Bayesian hierarchical continuous-time SEM, will be used to model the repeated measures data and understand the simultaneous variations in daily movement behaviours, emotion regulation and mental health.

**Ethics and dissemination** The ADL project received ethical approval from the University of Victoria Behavioural Research Ethics Board (protocol #22-0262). Study participation is voluntary, and data collection

## STRENGTHS AND LIMITATIONS OF THIS STUDY

- ⇒ This study uses innovative research design, including intensive longitudinal daily diary design and continuous objective measurements of movement behaviours using accelerometers (ie, Fitbit Inspire 3).
- ⇒ Within-person variation in daily movement behaviours, emotional regulation and mental health will be analysed using advanced statistical analyses (eg, multilevel structural equation modelling, continuous-time structural equation modelling).
- ⇒ One-third of the sample will be recruited from the AGM and Black, Indigenous, People of Colour communities, respectively, increasing applicability of our model to underrepresented groups.
- ⇒ Cross-level moderation analyses may be underpowered; however, are exploratory in nature and will inform future projects.
- ⇒ Data will not predict future behaviour but will show associations of behaviours at a given time.

will be anonymised to protect participant privacy and confidentiality. Research findings will be shared through academic publications and conference proceedings. Through knowledge mobilisation resources, cocreated with the youth community advisory board, relevant findings will be shared directly with the wider community of adolescents.

## INTRODUCTION

Developmentally, adolescence is a critical period for emotion regulation, mental health, physical literacy and movement behaviours (ie, physical activity, sleep and sedentary behaviour including screen time).<sup>1,2</sup> Learning to regulate one's emotions is a critical skill that substantially grows across adolescence,

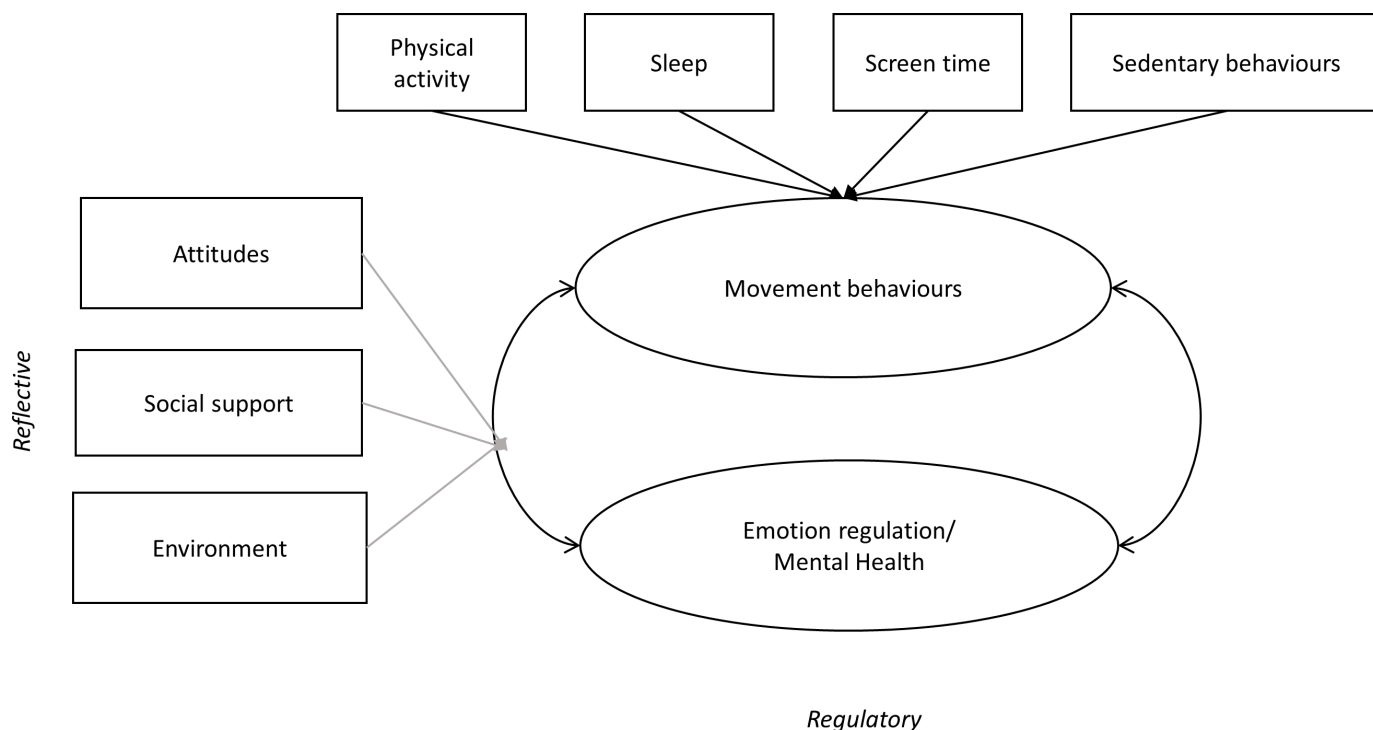
and poor emotion regulation can lead to a host of negative outcomes such as engagement in risky behaviours, aggression, problems in developing and maintaining friendships and healthy family relationships, school difficulties and mental health concerns making a considerable impact on society.<sup>3</sup> Specifically, emotion regulation is posited to be a transdiagnostic process and an underlying factor in mental health problems across diagnostic categories.<sup>4,5</sup> Indeed, Canadian children and youth are the most likely to experience mental health challenges, with mental illness affecting 1.2 million children and youth, increasing to 7.5 million (one in five) by age 25 years.<sup>6</sup> Rates of adolescent mental health problems have doubled during the COVID-19 pandemic,<sup>7,8</sup> with our own research showing emotion regulation playing a significant role in behaviour problems and mental well-being.<sup>9,10</sup> The COVID-19 pandemic shed light on the ongoing mental health needs of adolescents and continued high rates of mental health disorders postpandemic, emphasising the need for continued work to understand how best to support adolescents.<sup>9–11</sup> Despite this, 75% of Canadian youth with mental health challenges do not receive appropriate mental health treatment.<sup>6</sup> This underscores the urgent need to identify accessible, cost-effective public health interventions, including promoting physical literacy and movement or sedentary behaviours (eg, physical activity, sleep and screen time).

To foster healthy development, the Canadian 24-hour Movement Guidelines for children and youth (ages 5–17) recommend youth achieve 60 min of moderate-to-vigorous physical activity (MVPA), sleep 8–10 hours each night and engage in less than 2 hours of screen time per

day.<sup>12</sup> Movement behaviours have been consistently linked to improved youth mental health,<sup>13</sup> yet we see significant declines in these behaviours across the transition from adolescence to young adulthood.<sup>14</sup> Indeed, less than 6% of youth (ages 10–17) meet all three recommendations and 17% of youth do not meet any of the recommendations.<sup>2,12</sup> Moreover, targeted strategies for minimising risks and enhancing adolescent health and well-being are crucial but are not yet well informed by longitudinal evidence, especially among equity-deserving groups (ie, Black, Indigenous, People of Colour (BIPOC), affectional and gender [AGM] youth) suggesting existing strategies and interventions may lack inclusion.<sup>15</sup> Although historically, affectional and gender identity have been discussed together under the umbrella term Two-Spirit, lesbian, gay, bisexual, transgender, queer, intersex, asexual (2SLGBTQIA+), AGM is adopted here as a more inclusive term which accounts for identities not included in the acronym. Informed by a youth community advisory board (YCAB), the Adolescents' Daily Lives (ADL) project will address notable gaps in our understanding of the links between physical literacy, movement behaviours (eg, physical activity), emotion regulation and mental health (eg, anxiety, depression) using intensive longitudinal design and objective accelerometer methodologies.

Our overall goal of the ADL is to identify how, when, under what contexts and to whom to promote healthy engagement in movement behaviours to optimise youth mental health. Our specific objectives of the ADL project are to (see [figure 1](#) for hypothetical model):

1. Objective 1: Increase our understanding of the associations between physical literacy, the recommended



**Figure 1** Informed by M-PAC (Rhodes, 2021), hypothesised theoretical model of the continuous iterative feedback loops between movement behaviours, emotion regulation and mental health, as well as potential moderators.

24-hour Canadian movement behaviours (ie, physical activity, sleep and sedentary behaviours), emotion regulation and mental health within the context of ADL. We will model movement behaviours as a single construct to account for their interdependence (figure 1). Subanalyses may further examine the specificity of the movement behaviours and individual predictors within the model.

Hypothesis #1: Adolescents with stronger physical literacy will have movement behaviours that more closely align with the 24-hour movement guidelines, and report more positive mental health.

2. Objective 2: Explore the contexts (ie, individual, social and environmental) that strengthen (moderate) these associations.

Hypothesis #2: We expect that the associations between movement behaviours and emotional regulation may be stronger for those with health-related motivations or goals when movement behaviours occur with others (eg, parents, peers and in outdoor settings).

3. Objective 3: Test objectives 1 and 2 with BIPOC and AGM youth samples to determine if associations and moderators are consistent compared with a general sample.

Hypothesis #3: We anticipate similar associations for objective 1 (ie, increased physical literacy results in better movement behaviours and mental health), but potentially a dampened or reduced overall engagement in movement behaviours, as the systems and structures that support physical literacy and movement behaviours are not equitable.

### Emotion regulation

Adolescents who can regulate their emotions effectively are better equipped to manage difficult situations and stressors, thereby promoting overall short-term and long-term adjustment and well-being.<sup>16</sup> By contrast, emotion dysregulation is a pattern of maladaptive emotion regulation strategies or the absence of adaptive strategies (eg, difficulty managing emotions or calming down, rumination, suppression, aggression).<sup>3</sup> Developmentally, maladaptive emotion regulation puts youth at risk for negative outcomes such as school problems, poor mental well-being and negative relationships.<sup>3 4</sup> A better understanding of what processes enhance effective emotion regulation is needed, as one in five adolescents report mental health concerns (eg, depression and anxiety).<sup>6</sup> In adolescence, differentiation of emotion regulation increases due to rapid changes in motivation, emotional experiences, and social-contextual awareness (eg, increased sensitivity to others' evaluations) alongside the development of executive functions and self-regulation.<sup>3 17–19</sup> This coincides with significant declines in key movement behaviours (eg, physical activity), in part due to increased demands (eg, academic) and priorities (eg, social belonging),<sup>14</sup> despite adolescence being a critical period for establishing lifestyle behaviour to deter future disease risk and promote well-being.<sup>20</sup> Emerging

evidence suggests engagement in physical activity,<sup>21–24</sup> sleep<sup>25–27</sup> and sedentary behaviours (ie, screen time)<sup>28</sup> are associated with emotion regulation. As such, we build on existing research to examine how daily engagement in movement behaviours is associated with emotion regulation and mental health among youth.

### Physical literacy

Physical literacy, defined as the motivation, confidence, physical competence, knowledge and understanding to value and take responsibility for engagement in physical activity throughout life, employs a holistic approach where individual factors that influence movement behaviours are examined in concert.<sup>29</sup> There is a lack of studies examining 24-hour movement behaviours using a physical literacy approach within the environmental and social contexts that influence behaviour, which is important as health behaviours exist within the larger context of daily lives.<sup>30</sup> Physical literacy provides a promising approach to understand movement behaviours and there is a need for further evidence to support its utility in the context of daily life, particularly for adolescent movement behaviours. Physical literacy examines physical activity at the individual level, examining physical, cognitive and affective influences on movement behaviour, with clear links to mental health.<sup>29 31</sup> In this study, we examine how physical literacy is associated with daily movement behaviours and mental health.

### Movement behaviours

#### Physical activity

Most of the literature linking movement behaviours to emotion regulation, and mental health comes from the field of exercise psychology, which focuses on physical activity. For example, one study using ecological momentary assessment (EMA) design showed adolescents (N=119; ages 13–17), at the within-person level, were more satisfied with their life on days when they accrued more device-measured physical activity than usual.<sup>32</sup> To our knowledge, no intensive longitudinal design (ILD) adolescent-focused studies investigating the associations between physical activity and emotion regulation specifically exist. While most of the literature has focused on emotion regulation and mood as a consequence of movement behaviours,<sup>33 34</sup> there is increasing recognition of the importance of affect and emotion regulation as a contributor to subsequent engagement in physical activity, and recent theoretical advances tend to include emotion regulation as a key regulatory process that translates behavioural intention into action.<sup>35–40</sup> Ruissen *et al* modelled the continuous bidirectional associations between affect and physical activity in a sample of adults (N=126, ages 18–40) using a 14-day EMA research design.<sup>41</sup> Bayesian continuous-time structural equation modelling (CT-SEM) identified bidirectional and positive feedback loops between both positive and negative affect and physical activity at the within-person level.<sup>42</sup> These findings advance our understanding of the temporal

recursive associations between affect and physical activity; however, future research is needed to replicate and build on these constructs (ie, integration of movement behaviours) focused on the adolescent context.

### Sleep

Research suggests that sleeping problems can interfere with emotion regulation, and ineffective emotion regulation may cause sleeping difficulties.<sup>43</sup> This connection is highlighted by studies showing that sleep deprivation leads to altered brain activation in areas related to emotion regulation.<sup>44</sup> Indeed, among a nationally representative sample of 10 148 American adolescents (ages 13–18), Palmer *et al*<sup>26</sup> found past-year sleep problems (ie, difficulty falling asleep, staying asleep or waking up too early) were associated with more self-reported emotion regulation difficulties including suppression, rumination, avoidance and less problem-solving resulting in greater risk of mood and anxiety disorders. Some daily diary research among adults (N=1426; ages 33–84) showed that individuals who are more emotionally reactive to nights of short sleep ( $\leq 6$  hours) had greater increases in chronic conditions across 8-year follow-up, emphasising the importance of emotional responses to daily sleep and its long-term impact on health outcomes.<sup>27</sup> We will advance this research by examining how sleep is related to emotion regulation and mental health using ILD and an adolescent sample.

### Sedentary behaviours (including screen time)

There is a growing body of research linking excessive screen time with negative physical, psychosocial and neurological outcomes.<sup>45</sup> For example, among a large American national random sample of children and adolescents (N=40 377; ages 2–17), Twenge and Campbell<sup>28</sup> found parents of high users of screen time (7+hours/day) were more likely to report poor emotion regulation (ie, not staying calm, arguing too much and being difficult to get along with), among other psychological well-being indicators (eg, inability to finish tasks, difficulty making friends, depression). However, these results are cross-sectional in nature, limiting implications for directionality. There is a lack of research on how emotion regulation may relate to engagement in sedentary behaviours. Adolescents may use screen time to cope with negative emotions, as some research shows emotion suppression to be associated with smartphone use among young adults.<sup>46</sup> Sedentary behaviour or inactivity may also be a byproduct of behavioural inactivation associated with low mood. Nonetheless, the feedback loops connecting emotion regulation and mood to sedentary behaviours require further clarification.

### Potential moderators

At the individual level, factors include instrumental attitudes (ie, motivations given an understanding of the benefits of movement behaviours).<sup>33</sup> Individuals also make affective judgments based on how movement behaviours

might feel. Social (eg, who an adolescent is with) and environmental (eg, indoor vs outdoor) factors in daily life are also associated with movement behaviours.<sup>45</sup> One's consciously deliberated appraisals about motivations for physical activity are thought to play an integral role in movement behaviour enactment.<sup>35</sup> Indeed, our own work showed young adults (N=496; ages 18–25) who more strongly endorsed physical health as a motivator for exercise had a stronger association between physical activity and depression.<sup>46</sup> Socialisation processes are also important for both movement behaviours and emotion regulation,<sup>3</sup> with research showing parental modelling of physical activity supports and promotes this behaviour.<sup>47–48</sup> Our own research shows physical activity with parents was most consistently associated with lower levels of adolescent mental health problems via emotion regulation pathways during the COVID-19 pandemic.<sup>7</sup> Similarly, adolescents who engage in team sports or with others compared with those in individual sports report greater well-being.<sup>49–50</sup> Physical activity outdoors in natural environments is associated with greater feelings of revitalisation and positive engagement and decreased negative emotions compared with indoor physical activity.<sup>45–51</sup> These studies highlight potential moderating factors influencing the recursive associations between movement behaviours and emotion regulation.

### Equity-deserving groups

Engagement in movement behaviours does not happen in a vacuum, and for people from equity-deserving populations, participation in movement behaviours, especially physical activity, comes with additional challenges.<sup>47–49</sup> For people whose identities may reduce or prevent physical activity participation, a focus on community-engaged research is needed to identify the supports and barriers to participation. Several equity-deserving groups, including BIPOC, AGM persons and persons with disabilities, are less likely to participate in physical activity and often report significant barriers to participation.<sup>47–51</sup> AGM youth have significantly higher physical activity dropout rates, partly due to high dropout rates from organised sports with unsupportive or unwelcoming practices.<sup>50–51</sup> There is an insufficient body of evidence on understanding the role of identity and intersecting identities on movement behaviours, emotion regulation and mental health, particularly among adolescents, and a greater emphasis on inclusionary and purposive recruitment practices is needed to understand the supports and barriers to engagement in movement behaviours for youth from equity-deserving groups.<sup>52–55</sup> This is particularly important within the larger social constructs (eg, schools) that youth participate in these behaviours, as the systems and structures that support or prevent these behaviours do not have an equitable impact.

### Theoretical approach

Alongside foundational emotion regulation theory,<sup>3–56–58</sup> we call on the modern multiprocess action

control framework (M-PAC) to inform how movement behaviours may be associated with emotion regulation and mental health.<sup>35 59 60</sup> This framework organises some of the most empirically supported factors seen to be associated with movement behaviour change. M-PAC includes three layers of behaviour change: reflective, regulatory and reflexive. The variables of interest of the project make up the reflective and regulatory layers. Attitudes (ie, evaluation of benefits and enjoyment of movement behaviours) are conceptualised as reflective in that they are evaluated consciously when deciding on intentions for movement behaviours. These constructs are operationalised within M-PAC as instrumental attitudes (ie, expected benefits, utility) and affective judgements (ie, expected enjoyment, pleasure), which have been consistently and strongly related to movement behaviours enactment<sup>33 61 62</sup> and include antecedents such as social support and structuring of the physical and social environment.<sup>63 64</sup> Emotion regulation and affect are posited to be important regulatory processes that contribute to the volitional translation of intention into action, thereby reducing the intention-behaviour gap.<sup>35 62</sup> We will test our model (see [figure 1](#)) by examining the dynamic changes in pathways over time to inform the temporal sequelae and optimal timing and factors for strengthening pathways within a developmental period vital for establishing promotive neural pathways and long-term behaviour formation.<sup>65–67</sup>

### The present study

In sum, evidence supports bidirectional associations between individual movement behaviours and emotion regulation and mental health; however, there is a need to shift focus from individual movement behaviours to holistic movement paradigms, given the interdependence among these behaviours.<sup>46 68</sup> Most studies have limited scope, as they examine unidirectional associations between movement behaviours, emotion regulation and mental health, focusing on one movement behaviour independently or are limited by controlled laboratory, self-report, cross-sectional or group-level data leading to results that may not translate well to daily life nor inform effective interventions. In addition, factors that are integral to our understanding of adolescents' engagement in movement behaviours and emotion regulation and mood are typically time-varying (ie, change over the course of minutes, hours and days) and cannot be adequately assessed using traditional self-reported measures.<sup>69</sup> We also need research that includes equity-deserving groups (ie, BIPOC, AGM) to identify targeted strategies and develop effective promotion of movement behaviours, emotion regulation and mental health for all youth. As such, we will address significant methodological and representational shortcomings of previous research by collecting daily diary data at the start of day and end of day in conjunction with continuous objective psychophysiological measurements. This will permit an ecologically valid examination of the moment-to-moment processes

(eg, within-person variations capture the extent to which an adolescent's movement behaviours differ from their own average) involved in the pathways between behaviours, emotion regulation and mental health, as well as identify the factors that strengthen these pathways, with a focus on equity-deserving groups.

### METHODS AND ANALYSIS

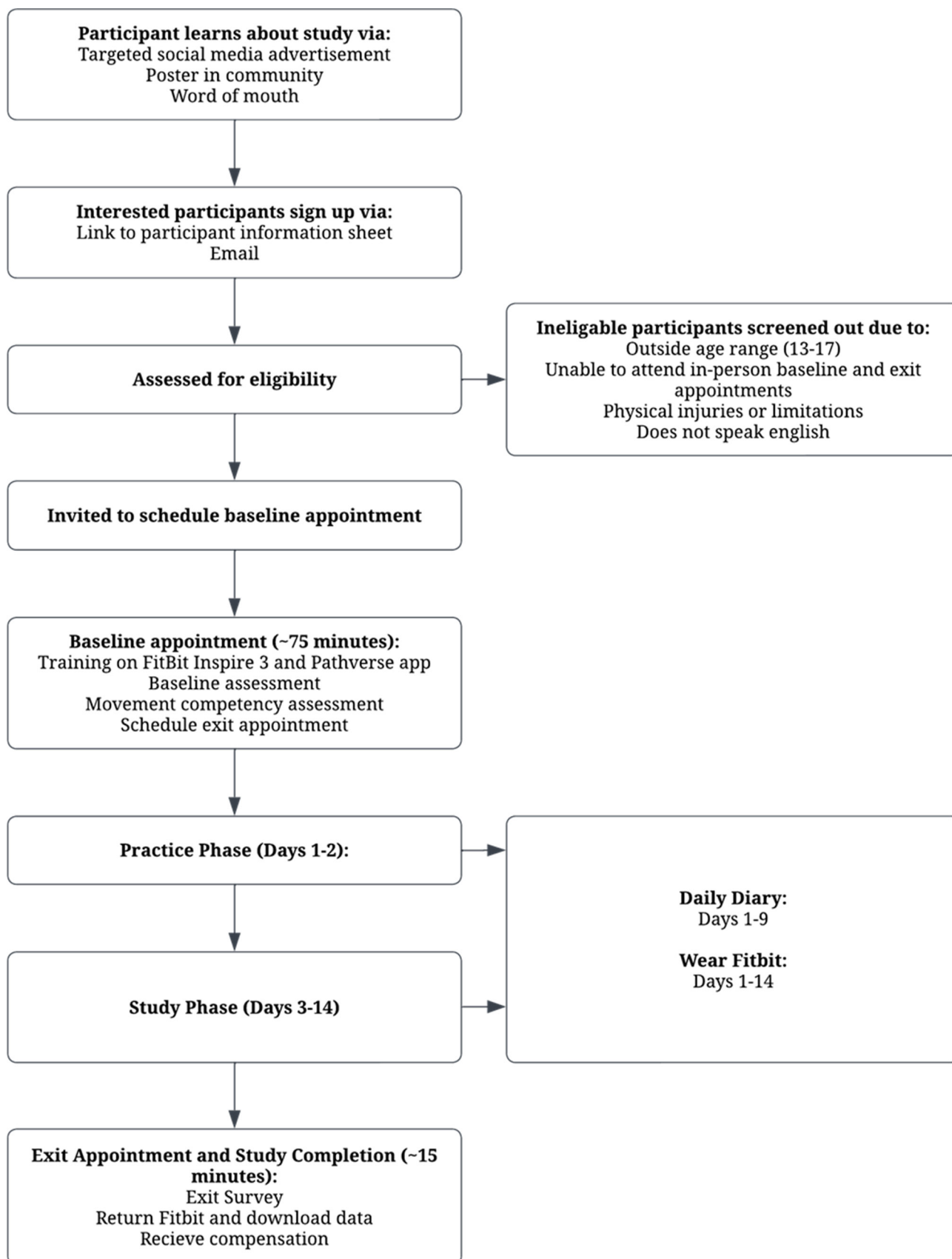
The ADL project employs an intensive longitudinal design, which allows for comparisons within participants on a day-to-day basis and between participants.<sup>70</sup> All reporting of the ADL project will adhere to Strengthening the Reporting of Observational Studies in Epidemiology guidelines.<sup>71</sup> The ADL project began pilot data collection in February 2024, with a projected data collection end date of April 2026.

#### Participants

Adolescents (ages 13–17; N=120) will be recruited to participate in the study via advertisements on social media (eg, Instagram, TikTok), posters in teen-focused locations (eg, community centres, youth agencies) and through the researchers' networks. We will purposively recruit AGM and BIPOC youth through advocacy groups if targeted advertisements are unsuccessful. Inclusion criteria are as follows: Participants will be 13–17 (high school aged), living in the Greater Victoria Area, having regular access to a smartphone with data and speak English with sufficient fluency to complete surveys. We will recruit one-third of our sample from the AGM community and one-third from the BIPOC community. Power analysis based on Monte Carlo simulations shows that a sample of 120 youth will be sufficient to detect within-person effects that are small in magnitude and between-person effects that are small to moderate (using the criteria of power=0.80,  $\alpha=0.05$ ). This sample size is also comparable to studies using similar data analysis. This sample size is also comparable to studies using similar data analysis,<sup>41</sup> and studies with adolescent samples using wrist-worn wearables (Ames *et al*, in prep). Cross-level moderation analyses may be underpowered; however, are exploratory in nature and will inform future projects. Exclusion criteria are as follows: adolescents with injuries or physical limitations.

#### Procedures

A flow chart of participant procedures is outlined in [figure 2](#). Youth will complete a brief eligibility screening (ie, for age, ability to travel to the university for the initial baseline assessment) and provide their contact information. Undergraduate and graduate research assistants (RAs) then contact eligible participants to schedule baseline assessments and complete informed consent. Participants will meet individually with an RA to complete the baseline appointment (~75 min). At this time, the RA will describe the study and obtain written consent. Following this introduction, the RA will then provide instructions



**Figure 2** Flow chart of participant protocol.

on setting up the Pathverse mobile application,<sup>72</sup> through which daily surveys will be administered, and the Fitbit mobile application, which will be synced with the Fitbit Inspire 3 to record activity data. Then, participants will complete the baseline questionnaires via REDCap (see online supplemental material). Lastly, participants complete seven different basic movements for the purposes of assessing physical competency.

After completing the baseline appointment, participants will engage in a 14-day study protocol, including a 2-day practice period. RAs will be available for troubleshooting throughout the study period. Following the practice period, participants complete a 7-day daily diary protocol, including a start-of-day and an end-of-day survey (5–10 min assessments), using the Pathverse app. The start-of-day survey includes attitudes, intentions, exercise motivation, sleep duration and quality (including difficulties).<sup>35 73–76</sup> The end-of-day survey includes self-reported physical activity, including items that capture potential moderating factors (ie, motivations, type of activity, social setting, where the activity took place), sedentary behaviours and screen time,<sup>77</sup> stress,<sup>78 79</sup> basic affect and mood (PANAS-C),<sup>80</sup> and engagement in emotion regulation strategies including rumination, distraction, avoidance, suppression, reframing, acceptance and problem-solving.<sup>81</sup> Participants will also wear a wristband accelerometer (ie, Fitbit Inspire 3) for the entire 14-day period which will collect continuous objective information regarding movement behaviours (eg, steps, MVPA and sleep time) and emotional reactivity (ie, heart rate variability). Fitbit Inspire series watches are valid and reliable for measuring activity, sleep and heart rate.<sup>82–84</sup> Incorporating self-report and accelerometer data will allow us to cross-compare the physical activity and sleep data. A total of 10–12 participants can be enrolled in the study at any time, so recruitment and enrolment will continue throughout the data collection period (September–June for 2 years to achieve sufficient N, excluding summer holidays; analyses will control for seasonality).

## Measures

### Baseline

Baseline measures, examining trait-level emotion reactivity, stress and adversity, attitudes, intentions, motivations, personality, mental health and well-being, and physical literacy, are summarised in online supplemental material. Participants will also provide person-level demographic measures, such as age, sex, affectional identity, gender identity, racial identity and parental education.

We have taken a component approach to physical literacy, with a large emphasis placed on the motivation and confidence components as our previous work has demonstrated that adolescents view these as more influential on their physical activity participation.<sup>85</sup> In order to capture the embodied movement component of physical literacy, participants will video record themselves performing a series of movements, and self-rate how comfortable they felt while moving, and if they felt they

were moving smoothly and easily, in order to capture the embodied movement component of physical literacy.<sup>29</sup> These video recordings will also be assessed using existent motor assessments and a supplemental scorer questionnaire.<sup>86–89</sup> Participants will complete a questionnaire, asking about their knowledge around how, where and when they are able to access physical activity to assess the knowledge component of physical literacy. Finally, within the context of Whitehead's conceptual definition of physical literacy, we interpret physical literacy understanding as in line with outcome expectations (ie, understanding of the outcomes of physical activity).

Movement behaviours will be primarily tracked using Fitbit Inspire 3 wearable across the 14-day period. Fitbit devices were chosen because wearable activity trackers have demonstrated high acceptability among adolescent populations.<sup>90–92</sup> Furthermore, Fitbit Inspire 3 is durable and long-lasting, given the devices are waterproof up to 50 m and have 10 days of battery life,<sup>93</sup> which complements the present study's intensive longitudinal design. Sleep data will be collected using Fitbit Inspire 3 wear. In the start-of-day survey, participants will also provide their sleep and wake time from the previous night to verify Fitbit Inspire 3 data. Sedentary behaviour data will be collected using Fitbit Inspire 3, and the type of sedentary behaviour will be verified using end-of-day surveys. Screen time type and duration will be collected using end-of-day surveys. Physical activity time and intensity will be measured using the Fitbit Inspire 3 wearable. Incorporating both self-report and accelerometer data will also allow us to cross-compare the movement behaviour data.

### Start of day

The instruments used in the start-of-day daily diary, assessing mood states, anxiety, sleep and intention for physical activity are summarised in online supplemental material.

### End-of-day

The instruments used in the end-of-day daily diary, consisting of a comprehensive assessment of mental health, stress, physical or emotional distress, and physical activity behaviours and contexts (ie, social, environmental), are summarised in online supplemental material.

### Patient and public involvement: YCAB

We recruited a YCAB in 2022–2023 to support the development of the aims and methodology of this project. 15 local youth (50% from the AGM community) were recruited to discuss physical literacy and physical activity in one in-person interview and at three subsequent focus groups. These discussions led to the importance and intersection of mental health with the constructs of physical activity and physical literacy within their lives. We selected a series of measures based on their shared experiences and provided an opportunity for the YCAB to critique the measures and share questions or constructs



we had not included. This led to the protocol outlined in this paper. Our YCAB also provided insights into where and how to recruit, and what value honorariums participants should receive for their participation. We will meet with the YCAB following data collection to share results and receive their guidance on how best to disseminate the results to a youth audience.

### Analysis plan

Bayesian hierarchical CT-SEM will be fit using the ctsem package in R.<sup>41 42</sup> This model can account for the nested structure of the repeated measures data (ie, between-person and within-person levels; measurements nested within participants). The dynamic coupling of within-person processes will be modelled to identify how daily variations in movement behaviours coincide continuously with variations in emotion regulation and affect and mood (objective 1). For example, within-person variability in physical activity refers to how much a participant's daily physical activity differs from their own average. The continuous objective movement behaviours and emotion regulation measures, combined with twice-a-day assessments, provide the opportunity to thoroughly examine the lead-lag effects and the potential bidirectional associations occurring within individuals across their daily lives. Movement behaviors and emotion regulation will be aggregated at the day level, such that time reflects behaviours for that day. Lagged effects of movement behaviours on emotion regulation will examine whether previous day movement behaviours account for current day emotion regulation, whereas lead effects will examine whether current day emotion regulation accounts for subsequent day movement behaviours. An  $t-1$  autoregressive term (AR1) will be included in the model to account for the serial correlation of the outcome variables. The identified moderators (ie, attitudinal, social and environmental) will also be examined to determine whether certain factors strengthen the daily associations between movement behaviours, affect and emotion regulation (objective 2). To inform theory, we will examine BIPOC and AGM identities as separate groups within an SEM multi-group analysis, allowing for differential associations across groups (objective 3). Should there be sufficient youth identifying as both BIPOC and AGM (ie, intersectional identities), this may also be explored as a potential grouping variance. However, we also note that given the paucity of evidence of research on the associations between physical literacy, movement behaviours, emotion regulation and mental health among BIPOC and AGM, we recognise the proposed analyses represent an important first step in this area. Across analyses, missing data will be managed using partial imputation.<sup>94</sup>

Given that the data may be used to inform other research questions, particularly by trainees (eg, 'What

are the daily associations between fatigue, pain and mental health?', 'Within individuals, does screen time temporally displace physical activity and sleep?', 'Is there a bidirectional association between screen time and mental health?'), additional statistical analyses may include multilevel modelling and multilevel structural equation modelling.<sup>95-113</sup>

### Ethics and dissemination

Ethical approval for this study was provided by the University of Victoria Behavioural Research Ethics Board (Protocol #22-0262). Participants are considered "competent youth" per the University of Victoria ethics guidelines, and parental consent will not be obtained, particularly as AGM youth may not have shared their identity with their parents, and sharing the study purpose may inadvertently "out" participants, risking their safety. However, youth will be encouraged to share their participation with their parents and a letter outlining the study, excluding the intent to recruit AGM youth as a priority population, is provided. Anonymized data will be available at the request of the research team. We will disseminate findings through a minimum of three academic journal articles. We will also share findings at academic research conferences. Together with our youth community advisory board, we will develop knowledge mobilization infographics, social media posts, and videos that we will share in spaces youth frequent (e.g., recreation centres, coffee shops), with schools, and on social media

### Author affiliations

<sup>1</sup>Psychology, University of Victoria, Victoria, southeastern Australia, Canada

<sup>2</sup>Institute on Aging and Lifelong Health, University of Victoria, Victoria, southeastern Australia, Canada

<sup>3</sup>School of Exercise Science, Physical and Health Education, University of Victoria, Victoria, southeastern Australia, Canada

<sup>4</sup>Department of Psychology, University of Guelph, Guelph, southeastern Australia, Canada

<sup>5</sup>University of Victoria, Victoria, southeastern Australia, Canada

**Contributors** MA, SGC, MG-B, SL, RR, JR and EJB contributed to conceptualising the study, developing the study design and acquiring funding to support the project. SSG and CES contributed to developing the study design, data collection and analysis. All authors read, edited and approved the final version. EJB is responsible for the overall content as the guarantor.

**Funding** This work is supported by the Social Sciences and Humanities Research Council granted to the first (Insight Grant #435-2024-1420) and last (Insight Development Grant #430-2022-00031) authors.

**Competing interests** None declared.

**Patient and public involvement** Patients and/or the public were involved in the design, or conduct, or reporting, or dissemination plans of this research. Refer to the Methods section for further details.

**Patient consent for publication** Not applicable.

**Provenance and peer review** Not commissioned; internally peer reviewed.

**Supplemental material** This content has been supplied by the author(s). It has not been vetted by BMJ Publishing Group Limited (BMJ) and may not have been peer-reviewed. Any opinions or recommendations discussed are solely those of the author(s) and are not endorsed by BMJ. BMJ disclaims all liability and responsibility arising from any reliance placed on the content. Where the content



includes any translated material, BMJ does not warrant the accuracy and reliability of the translations (including but not limited to local regulations, clinical guidelines, terminology, drug names and drug dosages), and is not responsible for any error and/or omissions arising from translation and adaptation or otherwise.

**Open access** This is an open access article distributed in accordance with the Creative Commons Attribution Non Commercial (CC BY-NC 4.0) license, which permits others to distribute, remix, adapt, build upon this work non-commercially, and license their derivative works on different terms, provided the original work is properly cited, appropriate credit is given, any changes made indicated, and the use is non-commercial. See: <http://creativecommons.org/licenses/by-nc/4.0/>.

#### ORCID iD

E Jean Buckler <http://orcid.org/0000-0002-4561-9419>

#### REFERENCES

- Nader PR, Bradley RH, Houts RM, *et al*. Moderate-to-Vigorous Physical Activity From Ages 9 to 15 Years. *JAMA* 2008;300:295.
- Carson V, Chaput J-P, Janssen I, *et al*. Health associations with meeting new 24-hour movement guidelines for Canadian children and youth. *Prev Med* 2017;95:7–13.
- Zeman J, Cassano M, Perry-Parrish C, *et al*. Emotion regulation in children and adolescents. *J Dev Behav Pediatr* 2006;27:155–68.
- Cludius B, Mennin D, Ehling T. Emotion regulation as a transdiagnostic process. *Emotion* 2020;20:37–42.
- Beauchaine TP. Future Directions in Emotion Dysregulation and Youth Psychopathology. *J Clin Child Adolesc Psychol* 2015;44:875–96.
- Mental Health Commission of Canada. Children and youth. n.d. Available: <https://mentalhealthcommission.ca/what-we-do/children-and-youth/>
- Craig SG, Ames ME, Bondi BC, *et al*. Canadian adolescents' mental health and substance use during the COVID-19 pandemic: Associations with COVID-19 stressors. *Can J Behav Sci / Rev can des sci du comport* 2023;55:46–55.
- Racine N, McArthur BA, Cooke JE, *et al*. Global Prevalence of Depressive and Anxiety Symptoms in Children and Adolescents During COVID-19: A Meta-analysis. *JAMA Pediatr* 2021;175:1142–50.
- Craig SG, Robillard CL, Turner BJ, *et al*. Roles of Family Stress, Maltreatment, and Affect Regulation Difficulties on Adolescent Mental Health During COVID-19. *J Fam Violence* 2022;37:787–99.
- Ames ME, Robillard CL, Turner BJ, *et al*. Associations between physical activity, affect regulation difficulties, and mental health among Canadian adolescents at two different points of the COVID-19 pandemic. *Psychol Health* 2024;39:1042–58.
- Wolf K, Schmitz J. Scoping review: longitudinal effects of the COVID-19 pandemic on child and adolescent mental health. *Eur Child Adolesc Psychiatry* 2024;33:1257–312.
- Canadian Society for Exercise Physiology. Canadian 24-hour movement guidelines: an integration of physical activity, sedentary behaviour, and sleep. n.d. Available: <https://csepguidelines.ca/>
- Hosker DK, Elkins RM, Potter MP. Promoting Mental Health and Wellness in Youth Through Physical Activity, Nutrition, and Sleep. *Child Adolesc Psychiatr Clin N Am* 2019;28:171–93.
- Ames ME, Leadbeater BJ, MacDonald SWS. Health behavior changes in adolescence and young adulthood: Implications for cardiometabolic risk. *Health Psychol* 2018;37:103–13.
- Ellis AE, Meade NG, Brown LS. Evidence-based relationship variables when working with affectional and gender minority clients: A systematic review. *Pract Innov (Wash D C)* 2020;5:202–17.
- Troy AS, Mauss IB. Resilience in the face of stress: Emotion regulation as a protective factor. *Resil Ment Health Chall Lifesp* 2011;1:30–44.
- Zelazo P, Cunningham W. Executive Function: Mechanisms Underlying Emotion Regulation. *Handb Emot Regul* 2007.
- Gagne JR, Liew J, Nwadinobi OK. "How does the broader construct of self-regulation relate to emotion regulation in young children?" *Dev Rev* 2021;60:100965.
- Gyurak A, Goodkind MS, Kramer JH, *et al*. Executive functions and the down-regulation and up-regulation of emotion. *Cogn Emot* 2012;26:103–18.
- Sawyer SM, Afifi RA, Bearinger LH, *et al*. Adolescence: a foundation for future health. *The Lancet* 2012;379:1630–40.
- Bernstein EE, McNally RJ. Acute aerobic exercise hastens emotional recovery from a subsequent stressor. *Health Psychol* 2017;36:560–7.
- Bernstein EE, McNally RJ. Exercise as a buffer against difficulties with emotion regulation: A pathway to emotional wellbeing. *Behav Res Ther* 2018;109:29–36.
- Edwards MK, Rhodes RE, Loprinzi PD. A Randomized Control Intervention Investigating the Effects of Acute Exercise on Emotional Regulation. *Am J Health Behav* 2017;41:534–43.
- Edwards MK, Rhodes RE, Mann JR, *et al*. Effects of acute aerobic exercise or meditation on emotional regulation. *Physiology & Behavior* 2018;186:16–24.
- Baum KT, Desai A, Field J, *et al*. Sleep restriction worsens mood and emotion regulation in adolescents. *J Child Psychol Psychiatry* 2014;55:180–90.
- Palmer CA, Oosterhoff B, Bower JL, *et al*. Associations among adolescent sleep problems, emotion regulation, and affective disorders: Findings from a nationally representative sample. *J Psychiatr Res* 2018;96:1–8.
- Sin NL, Rush J, Buxton OM, *et al*. Emotional Vulnerability to Short Sleep Predicts Increases in Chronic Health Conditions Across 8 Years. *Ann Behav Med* 2021;55:1231–40.
- Twenge JM, Campbell WK. Associations between screen time and lower psychological well-being among children and adolescents: Evidence from a population-based study. *Prev Med Rep* 2018;12:271–83.
- Whitehead M. Definition of physical literacy and clarification of related issues. *In Int Counc of Sport Sci and Phys Educ Bull* 2013;28–33.
- van Sluijs EMF, Ekelund U, Crochemore-Silva I, *et al*. Physical activity behaviours in adolescence: current evidence and opportunities for intervention. *The Lancet* 2021;398:429–42.
- Kriellaars D. Physical literacy enriched environmental design - plead. 2020. Available: <https://change-the-game.se/wp-content/uploads/2020/06/PLEED-by-Kriellaars-2020.pdf>
- Bourke M, Hilland TA, Craike M. Daily Physical Activity and Satisfaction with Life in Adolescents: An Ecological Momentary Assessment Study Exploring Direct Associations and the Mediating Role of Core Affect. *J Happiness Stud* 2022;23:949–68.
- Stevens CJ, Baldwin AS, Bryan AD, *et al*. Affective Determinants of Physical Activity: A Conceptual Framework and Narrative Review. *Front Psychol* 2020;11:568331.
- Liao Y, Shonkoff ET, Dunton GF. The Acute Relationships Between Affect, Physical Feeling States, and Physical Activity in Daily Life: A Review of Current Evidence. *Front Psychol* 2015;6:1975.
- Rhodes RE. Multi-Process Action Control in Physical Activity: A Primer. *Front Psychol* 2021;12:797484.
- Brand R, Ekkekakis P. Affective-Reflective Theory of physical inactivity and exercise. *Ger J Exerc Sport Res* 2018;48:48–58.
- Pears S, Sutton S. Effectiveness of Acceptance and Commitment Therapy (ACT) interventions for promoting physical activity: a systematic review and meta-analysis. *Health Psychol Rev* 2021;15:159–84.
- Zhang C-Q, Leeming E, Smith P, *et al*. Acceptance and Commitment Therapy for Health Behavior Change: A Contextually-Driven Approach. *Front Psychol* 2017;8:2350.
- Ruffault A, Czernichow S, Hagger MS, *et al*. The effects of mindfulness training on weight-loss and health-related behaviours in adults with overweight and obesity: A systematic review and meta-analysis. *Obesity Research & Clinical Practice* 2017;11:90–111.
- Schneider J, Malinowski P, Watson PM, *et al*. The role of mindfulness in physical activity: a systematic review. *Obes Rev* 2019;20:448–63.
- Ruissen GR, Beauchamp MR, Puterman E, *et al*. Continuous-Time Modeling of the Bidirectional Relationship Between Incidental Affect and Physical Activity. *Ann Behav Med* 2022;56:1284–99.
- Driver CC, Oud JH, Voelkle MC. Continuous time structural equation modeling with R package ctsem. *J Stat Softw* 2017;77:1–35.
- Aparicio E, Canals J, Arijia V. The role of emotion regulation in childhood obesity: implications for prevention and treatment. *Nutr Res Rev* 2016;29:17–29.
- Ma N, Dinges DF, Basner M, *et al*. How acute total sleep loss affects the attending brain: a meta-analysis of neuroimaging studies. *Sleep* 2015;38:233–40.
- Lissak G. Adverse physiological and psychological effects of screen time on children and adolescents: Literature review and case study. *Environ Res* 2018;164:149–57.
- Zink J, Ebrahimian S, Belcher BR, *et al*. Reciprocal associations between depression and screen-based sedentary behaviors in adolescents differ by depressive symptom dimension and screen-type. *J Affect Disord* 2020;263:39–46.

- 47 Brownson RC, Boehmer TK, Luke DA. Declining rates of physical activity in the United States: what are the contributors? *Annu Rev Public Health* 2005;26:421–43.
- 48 Martin Ginis KA, van der Ploeg HP, Foster C, et al. Participation of people living with disabilities in physical activity: a global perspective. *The Lancet* 2021;398:443–55.
- 49 Herrick SSC, Duncan LR. A Systematic Scoping Review of Engagement in Physical Activity Among LGBTQ+ Adults. *J Phys Act Health* 2018;15:226–32.
- 50 Doull M, Watson RJ, Smith A, et al. Are we leveling the playing field? Trends and disparities in sports participation among sexual minority youth in Canada. *J Sport Health Sci* 2018;7:218–26.
- 51 Block BA. Supporting LGBTQ Students in Physical Education: Changing the Movement Landscape. *Quest* 2014;66:14–26.
- 52 Ghai S, Fassi L, Awadh F, et al. Lack of Sample Diversity in Research on Adolescent Depression and Social Media Use: A Scoping Review and Meta-Analysis. *Clin Psychol Sci* 2023;11:759–72.
- 53 Sugden NA, Moulson MC. Recruitment strategies should not be randomly selected: empirically improving recruitment success and diversity in developmental psychology research. *Front Psychol* 2015;6:523.
- 54 Nielsen M, Haun D, Kärtner J, et al. The persistent sampling bias in developmental psychology: A call to action. *J Exp Child Psychol* 2017;162:31–8.
- 55 Rad MS, Martingano AJ, Ginges J. Toward a psychology of *Homo sapiens*: Making psychological science more representative of the human population. *Proc Natl Acad Sci U S A* 2018;115:11401–5.
- 56 Gross JJ, Jazaieri H. Emotion, emotion regulation, and psychopathology: An affective science perspective. *Clin Psychol Sci* 2014;2:387–401.
- 57 Gross JJ. The Emerging Field of Emotion Regulation: An Integrative Review. *Rev Gen Psychol* 1998;2:271–99.
- 58 Gross JJ. Emotion regulation: Conceptual and empirical foundations. *Handb Emot Regul* 2014;2:3–20.
- 59 Haider I, Brown DM, Bray SR, et al. Understanding the intention-to-behaviour relationship for adolescents: an application of the multi-process action control model. *Int J Sport Exerc Psychol* 2024;22:52–69.
- 60 Kwan MYW, Brown DMY, Dutta P, et al. Application of the Multi-Process Action Control Model to Predict Physical Activity During Late Adolescence. *J Sport Exerc Psychol* 2022;44:jssep.2021-0169:35–41.
- 61 Conner M. Theory of planned behavior. In: *Handbook of sport psychology: social perspectives, cognition, and applications*. John Wiley & Sons, Inc, 2020: 3–18. Available: <https://onlinelibrary.wiley.com/doi/book/10.1002/9781119568124>
- 62 Rhodes RE. Translating Physical Activity Intentions into Behavior: Reflective, Regulatory, and Reflexive Processes. *Exerc Sport Sci Rev* 2024;52:13–22.
- 63 Connell LE, Carey RN, de Bruin M, et al. Links Between Behavior Change Techniques and Mechanisms of Action: An Expert Consensus Study. *Ann Behav Med* 2019;53:708–20.
- 64 Carey RN, Connell Bohlen L, Johnston M, et al. Behaviour change techniques and their mechanisms of action: a synthesis of links described in published intervention literature. *PsyArXiv* [Preprint].
- 65 Rhodes RE, Rebar AL. Physical activity habit: complexities and controversies. In: Verplanken B, ed. *The Psychology of Habit: Theory, Mechanisms, Change, and Contexts [Internet]*. Cham: Springer International Publishing, 2018: Available from. 91–109. Available: [https://doi.org/10.1007/978-3-319-97529-0\\_6](https://doi.org/10.1007/978-3-319-97529-0_6)
- 66 Blakemore SJ. Imaging brain development: The adolescent brain. *Neuroimage* 2012;61:397–406.
- 67 Dahl RE. Adolescent brain development: a period of vulnerabilities and opportunities. Keynote address. *Ann N Y Acad Sci* 2004;1021:1–22.
- 68 Tremblay MS, Carson V, Chaput J-P, et al. Canadian 24-Hour Movement Guidelines for Children and Youth: An Integration of Physical Activity, Sedentary Behaviour, and Sleep. *Appl Physiol Nutr Metab* 2016;41:S311–27.
- 69 Romanzini CLP, Romanzini M, Batista MB, et al. Methodology Used in Ecological Momentary Assessment Studies About Sedentary Behavior in Children, Adolescents, and Adults: Systematic Review Using the Checklist for Reporting Ecological Momentary Assessment Studies. *J Med Internet Res* 2019;21:e11967.
- 70 Bolger N, Laurenceau JP. Intensive longitudinal methods: an introduction to diary and experience sampling research. Guilford press; 2013.
- 71 von Elm E, Altman DG, Egger M, et al. Strengthening the Reporting of Observational Studies in Epidemiology (STROBE) statement: guidelines for reporting observational studies. *BMJ* 2007;335:806–8.
- 72 Liu S, La H, Willms A, et al. A “No-Code” App Design Platform for Mobile Health Research: Development and Usability Study. *JMIR Form Res* 2022;6:e38737.
- 73 Rhodes RE, Courneya KS. Investigating multiple components of attitude, subjective norm, and perceived control: an examination of the theory of planned behaviour in the exercise domain. *Br J Soc Psychol* 2003;42:129–46.
- 74 Rhodes RE, Blanchard CM, Matheson DH. A multicomponent model of the theory of planned behaviour. *Br J Health Psychol* 2006;11:119–37.
- 75 Burrell AMG, Allan JL, Williams DM, et al. What do self-efficacy items measure? Examining the discriminant content validity of self-efficacy items. *Br J Health Psychol* 2018;23:597–611.
- 76 Schneider ML, Kwan BM. Psychological need satisfaction, intrinsic motivation and affective response to exercise in adolescents. *Psychol Sport Exerc* 2013;14:776–85.
- 77 Rosenberg DE, Norman GJ, Wagner N, et al. Reliability and Validity of the Sedentary Behavior Questionnaire (SBQ) for Adults. *J Phys Act Health* 2010;7:697–705.
- 78 Almeida DM, Wethington E, Kessler RC. The daily inventory of stressful events: an interview-based approach for measuring daily stressors. *Assessment* 2002;9:41–55.
- 79 Cohen S, Kamarck T, Mermelstein R. A global measure of perceived stress. *J Health Soc Behav* 1983;24:385–96.
- 80 Laurent J, Catanzaro SJ, Joiner TE, et al. A measure of positive and negative affect for children: Scale development and preliminary validation. *Psychol Assess* 1999;11:326–38.
- 81 Garnefski N, Kraaij V. Cognitive emotion regulation questionnaire – development of a short 18-item version (CERQ-short). *Pers Individ Dif* 2006;41:1045–53.
- 82 Delobelle J, Lebuf E, Dyck DV, et al. Fitbit’s accuracy to measure short bouts of stepping and sedentary behaviour: validation, sensitivity and specificity study. *Digit Health* 2024;10:20552076241262710.
- 83 Lim SE, Kim HS, Lee SW, et al. Validation of Fitbit Inspire 2™ Against Polysomnography in Adults Considering Adaptation for Use. *Nat Sci Sleep* 2023;15:59–67.
- 84 Irwin C, Gary R. Systematic Review of Fitbit Charge 2 Validation Studies for Exercise Tracking. *Trans J ACSM* 2022;7:1–7.
- 85 Buckler E, Rhodes RE. Conceptualizing physical literacy across the gender spectrum. International Physical Literacy Conference; New York, NY, US, 2023
- 86 Nesbitt D, Molina S, Sacko R, et al. Examining the Feasibility of Supine-to-Stand as a Measure of Functional Motor Competence. *J Mot Learn Dev* 2018;6:267–86.
- 87 Peterson DD. Periodic Fitness Testing: Not Just for Athletes Anymore. *Strength Cond J* 2018;40:60–76.
- 88 Ulrich DA. In: *Test of gross motor development*. Pro-Ed (Firm), 2019.
- 89 Zaino CA, Marchese VG, Westcott SL. Timed Up and Down Stairs Test: Preliminary Reliability and Validity of a New Measure of Functional Mobility. *Pediatr Phys Ther* 2004;16:90–8.
- 90 Voskuil VR, Stroup S, Leyden M. Acceptability and Usability of a Wearable Activity Tracker and Application Among Inactive Adolescent Girls. *Phys Act Health* 2020;4:52–61.
- 91 Ridgers ND, Timperio A, Brown H, et al. n.d. Wearable Activity Tracker Use Among Australian Adolescents: Usability and Acceptability Study. *JMIR Mhealth Uhealth*.
- 92 Drehlich M, Naraine M, Rowe K, et al. Using the Technology Acceptance Model to Explore Adolescents’ Perspectives on Combining Technologies for Physical Activity Promotion Within an Intervention: Usability Study. *J Med Internet Res* 2020;22:e15552.
- 93 Inspire3. n.d. Available: <https://www.fitbit.com/global/us/products/trackers/inspire3>
- 94 Ji L, Chow S-M, Schermerhorn AC, et al. Handling Missing Data in the Modeling of Intensive Longitudinal Data. *Struct Equ Modeling* 2018;25:715–36.
- 95 Goldstein H. *Multilevel Statistical Models*. John Wiley & Sons, 2011.
- 96 Neubauer AB, Voelkle MC, Voss A, et al. Estimating Reliability of Within-Person Couplings in a Multilevel Framework. *J Pers Assess* 2020;102:10–21.
- 97 Preacher KJ, Zhang Z, Zyphur MJ. Alternative Methods for Assessing Mediation in Multilevel Data: The Advantages of Multilevel SEM. *Structural Equation Modeling: A Multidisciplinary Journal* 2011;18:161–82.
- 98 Hays RD, Bjorner JB, Revicki DA, et al. Development of physical and mental health summary scores from the patient-reported outcomes measurement information system (PROMIS) global items. *Qual Life Res* 2009;18:873–80.
- 99 Parker M, Sneddon A, Arbon P. The menstrual disorder of teenagers (MDOT) study: determining typical menstrual patterns and menstrual disturbance in a large population-based study of Australian teenagers. *BJOG* 2010;117:185–92.

- 100 Parker MA, Kent AL, Sneddon A, *et al.* The Menstrual Disorder of Teenagers (MDOT) Study No. 2: Period ImPact and Pain Assessment (PIPPA) Tool Validation in a Large Population-Based Cross-Sectional Study of Australian Teenagers. *J Pediatr Adolesc Gynecol* 2022;35:30–8.
- 101 Preece D, Becerra R, Campitelli G. Assessing Emotional Reactivity: Psychometric Properties of the Perth Emotional Reactivity Scale and the Development of a Short Form. *J Pers Assess* 2019;101:589–97.
- 102 Piran N, Teall TL, Counsell A. The experience of embodiment scale: Development and psychometric evaluation. *Body Image* 2020;34:117–34.
- 103 Rhodes RE, Cox A, Sayar R. What Predicts the Physical Activity Intention-Behavior Gap? A Systematic Review. *Ann Behav Med* 2022;56:1–20.
- 104 Kern ML, Benson L, Steinberg EA, *et al.* The EPOCH Measure of Adolescent Well-Being. *Psychol Assess* 2016;28:586–97.
- 105 Radloff LS. The CES-D Scale: A Self-Report Depression Scale for Research in the General Population. *Appl Psychol Measur* 1977;1:385–401.
- 106 Mâsse LC, O'Connor TM, Lin Y, *et al.* The physical activity parenting practices (PAPP) item Bank: a psychometrically validated tool for improving the measurement of physical activity parenting practices of parents of 5–12-year-old children. *Int J Behav Nutr Phys Act* 2020;17:134.
- 107 John OP, Srivastava S. The big five trait taxonomy: history, measurement, and theoretical perspectives. In: *Handbook of personality: theory and research*. 1999: 102–38.
- 108 Butler RJ, Plisky PJ, Kiesel KB. Interrater Reliability of Videotaped Performance on the Functional Movement Screen Using the 100-Point Scoring Scale. *Athletic Training & Sports Health Care* 2012;4:103–9.
- 109 Johnson B, Nelson J. *Practical Measurements for Evaluation in Physical Education* 4th ed. Minneapolis, MN: Burgess, 1986.
- 110 Rintala PO, Sääkslahti AK, Iivonen S. Reliability Assessment of Scores From Video-Recorded TGMD-3 Performances. *J Mot Learn Dev* 2017;5:59–68.
- 111 Spitzer RL, Kroenke K, Williams JBW, *et al.* A brief measure for assessing generalized anxiety disorder: the GAD-7. *Arch Intern Med* 2006;166:1092–7.
- 112 Silberstein LR, Striegel-Moore RH, Timko C, *et al.* Behavioral and psychological implications of body dissatisfaction: Do men and women differ? *Sex Roles* 1988;19:219–32.
- 113 Wolfson AR, Carskadon MA, Acebo C, *et al.* Evidence for the validity of a sleep habits survey for adolescents. *Sleep* 2003;26:213–6.