

SCIENTIFIC REPORTS



OPEN

Mechanism and DNA-based detection of field-evolved resistance to transgenic Bt corn in fall armyworm (*Spodoptera frugiperda*)

Rahul Banerjee¹, James Hasler², Robert Meagher³, Rodney Nagoshi³, Lucas Hietala⁴, Fangneng Huang⁵, Kenneth Narva² & Juan Luis Jurat-Fuentes^{1,4} 

Evolution of resistance threatens sustainability of transgenic crops producing insecticidal proteins from the bacterium *Bacillus thuringiensis* (Bt). The fall armyworm (*Spodoptera frugiperda*) is a devastating pest of corn in the Western Hemisphere initially controlled by transgenic Bt corn producing the Cry1Fa insecticidal protein (event TC1507). However field-evolved resistance to TC1507 was observed in Puerto Rico in 2007 and has subsequently been reported in a number of locations in North and South America. Early studies on Puerto Rico fall armyworm populations found that the resistance phenotype was associated with reduced expression of alkaline phosphatase. However, in this work we show that field-evolved resistance to Cry1Fa Bt corn in Puerto Rico is closely linked to a mutation in an ATP Binding Cassette subfamily C2 (ABCC2) gene that functions as a Cry1Fa receptor in susceptible insects. Furthermore, we report a DNA-based genotyping test used to demonstrate the presence of the resistant (*SfABCC2mut*) allele in Puerto Rico populations in 2007, coincident with the first reports of damage to TC1507 corn. These DNA-based field screening data provide strong evidence that resistance to TC1507 in fall armyworm maps to the *SfABCC2* gene and provides a useful molecular marker for detecting the *SfABCC2mut* allele in resistant fall armyworm.

Pest control efficacy and the potential for higher net returns have driven increasing adoption of transgenic crops producing insecticidal proteins from the bacterium *Bacillus thuringiensis* (Bt crops) during the past 20 years¹. In the US, Bt corn and cotton adoption represent about 80% of the national acreage devoted to the two commodities². This high level of adoption increases selection pressure for the evolution of resistance to Bt toxins in targeted pests. Currently, field evolved resistance resulting in control failures has been documented for three lepidopteran^{3–7} and one coleopteran⁸ species. Despite the importance of field resistance to the sustainability of Bt crops, little is known about the mechanisms involved, which in turn hinders the development of DNA-based technologies to monitor for resistance.

Alterations in any of the steps in the mode of action of the Bt insecticidal proteins can lead to resistance. Intoxication with Cry proteins from Bt includes processing to an activated toxin core by midgut proteases, binding to receptors on the brush border membrane of midgut cells, and formation of toxin pores that result in cell death by osmotic shock and collapse of the epithelial integrity, favoring the onset of septicemia and ultimately insect death (reviewed in ref. 9). The most commonly described resistance mechanism to Cry proteins from laboratory selection experiments is the alteration of toxin binding to midgut receptors¹⁰. While several proteins and glycolipids have been described as Cry toxin receptors in insects, resistance has been associated with mutations

¹Genome Science and Technology Graduate Program, University of Tennessee, Knoxville, TN, 37996, USA. ²Dow AgroSciences, Indianapolis, IN, 46268, USA. ³Center for Medical, Agricultural and Veterinary Entomology, Insect Behavior and Biocontrol Research Unit, USDA-ARS, Gainesville, FL, 32608, USA. ⁴Department of Entomology and Plant Pathology, University of Tennessee, Knoxville, TN, 37996, USA. ⁵Department of Entomology, Louisiana State University Agricultural Center, Baton Rouge, LA, 70803, USA. Correspondence and requests for materials should be addressed to J.L.J.-F. (email: jurat@utk.edu)

in cadherin and ATP binding cassette (ABC) genes, as well as to reduced expression of aminopeptidase (APN) or alkaline phosphatase (ALP) genes (reviewed in ref. 9). In cases of field-evolved resistance to Bt crops, differential splicing of cadherin transcripts was reported to associate with *Pectinophora gossypiella* (Saunders) resistance to Cry1Ac cotton in India¹¹. Reduced expression of an alkaline phosphatase gene (*SfmALP2*) was associated with resistance to Cry1Fa corn in *Spodoptera frugiperda* (J. E. Smith) from Puerto Rico¹². In this work, we report a mutation in an ABC2 gene as linked to field resistance to Bt corn producing the Cry1Fa protein in *S. frugiperda* from Puerto Rico and describe a DNA-based method to monitor for resistance in field samples. Moreover, we demonstrate the feasibility of using this strategy on archived samples to provide a historical reconstruction of resistance evolution and dispersal.

Results

Resistance to Cry1Fa corn in *S. frugiperda* from Puerto Rico is linked to a mutation in the *SfABCC2* gene and not to reduced *SfmALP2* transcript levels. Previously we observed an association between reduced expression of a membrane-bound alkaline phosphatase gene (*SfmALP2*) and resistance to corn event TC1507 producing the Cry1Fa toxin in the 456LS3 strain of *S. frugiperda* from Puerto Rico¹². However, genetic linkage analyses (Fig. S1) did not support co-segregation of reduced *SfmALP2* levels and resistance to corn event TC1507 in the 456LS3 strain (Fig. 1). Quantification analyses found nearly equal proportions of individuals with *SfmALP2* transcript levels similar to or lower than that of 456LS3 larvae in survivors from TC1507 (17/20) and non-Bt (16/20) treatments (Fig. 1A). Similarly, survivors of both treatments showed a wide range and substantial overlap in *SfmALP2* protein levels (Fig. 1B). These results contrast with the expectation of unambiguous differences between the two treatments in the distribution of the genetic trait associated with the resistance phenotype (Fig. S1), a strong indication that ALP is not the primary determinant for survival on TC1507. However, there were still indications of a correlation between ALP levels and Cry1Fa resistance. The survivors of the TC1507 treatment were less likely than their non-Cry1Fa treatment counterparts to express *SfmALP2* transcript levels above baseline (>0.1) (Fig. 1A) or show *SfmALP2* protein levels greater than the Benzon strain (susceptible parents) control (Fig. 1B).

Transcriptomic profiling of putative Cry1Fa receptors in susceptible and a TC1507-resistant strain of *S. frugiperda* originated by Dow AgroSciences from Puerto Rico collections, detected differences for the *SfABCC2* gene between the strains. A number of conservative single nucleotide polymorphisms, a 9 b deletion of bases 39–47, and a 2 bp (GC) insertion at position 2,218 were detected in the cDNA from the resistant compared to the susceptible strain (Fig. S2). The GC insertion was confirmed by sequencing both cDNA and genomic DNA templates to be present in the 456LS3 but not in the Benzon strain, and thus we named the allele containing the insertion as *SfABCC2mut*. This insertion induces a frameshift and a premature stop codon at amino acid 746 (Fig. 2, upper panel), resulting in production of a truncated protein predicted to miss the whole second transmembrane domain in the expected protein structure, including one of the ATP binding cassettes (Fig. 2, lower panel).

A custom Taqman SNP genotyping assay was developed to detect the *SfABCC2mut* allele and used to test for its genetic linkage with resistance to TC1507 corn in the 456LS3 strain. As expected from Mendelian transmission of a single recessive resistance allele (Fig. S1), all the genotyped 456LS3 parents were homozygous for the *SfABCC2mut* allele, while the allele was not detected among parents from the Benzon (susceptible) strain. All genotyped F1 progeny from Benzon \times 456LS3 crosses were identified to be heterozygous for the *SfABCC2mut* allele (Table 1). In the backcross subfamily selected with the non-transgenic corn isolate, there was no significant difference (two-tailed P -value = 2.469; $\chi^2 = 0.1161$) between the proportion of expected (1:1) and observed (30:19) heterozygous and homozygous individuals, respectively, for the *SfABCC2mut* allele (Table 1). In contrast, the proportion of observed heterozygous to homozygous individuals (8:42) among the survivors of the backcross subfamily exposed to corn event TC1507 highly significantly diverged (two-tailed P -value < 0.0001 ; $\chi^2 = 23.120$) from the expected 1:1 ratio, supporting co-segregation.

***SfABCC2*, but not *SfABCC2mut*, serves as a functional shared Cry1A/Cry1Fa receptor in cultured insect cells.** The full-length cDNAs encoding *SfABCC2* (accession number KY489760) and the truncated *SfABCC2mut* (accession number KY489761) proteins were cloned and expressed in cultured Sf9 cells, as confirmed by Western blotting (Fig. S3A). In replicated experiments, the detected recombinant protein bands appeared consistent with the predicted size for *SfABCC2* (151.6 kDa) and *SfABCC2mut* (84.6 kDa) proteins and were detected in the membrane fraction. Relatively lower levels of recombinant protein were detected in cells producing *SfABCC2mut*, but increasing levels of *SfABCC2mut* did not result in augmented Cry1Fa binding (Fig. S3A).

Results from qualitative binding assays (Fig. S3B) confirmed specific binding of radiolabeled Cry1Fa to Sf9 cells producing *SfABCC2*, but not to the control cells transfected with empty vector or cells producing *SfABCC2mut*. In competition binding assays, radiolabeled Cry1Fa bound with high affinity ($K_d = 1.26 \pm 0.31$ nM) to Sf9 cells producing *SfABCC2*, while no specific Cry1Fa toxin binding was detected to cells producing *SfABCC2mut* (Fig. 3A). Moreover, Cry1Ab bound to cells producing *SfABCC2* with significantly higher affinity ($K_d = 0.20 \pm 0.03$ nM) but similar binding site concentration (1.06 ± 0.09 nmol/mg) than Cry1Fa (1.30 ± 0.13 nmol/mg). In contrast, Cry1Ca did not displace Cry1Fa binding (Fig. 3A), supporting that the former protein does not bind to the shared Cry1A-Cry1Fa sites on *SfABCC2*.

Binding of Cry1Fa to Sf9 cells producing *SfABCC2* was conducive to toxicity, as 80% mortality was observed after treatment with 0.1 μ g/ml (1.67 nM) of Cry1Fa (Fig. 3B). In contrast, mortality was significantly lower (One Way ANOVA and post-hoc Holm-Sidak pairwise comparison, $P < 0.01$) in Sf9 cells producing *SfABCC2mut* (17%) or in cells transformed with the empty vector (24%). Similar results were obtained when exposing Sf9 cells producing *SfABCC2* to Cry1Ab or Cry1Ac (Fig. 3B). Since Sf9 cells are highly sensitive to Cry1Ca¹³, we tested

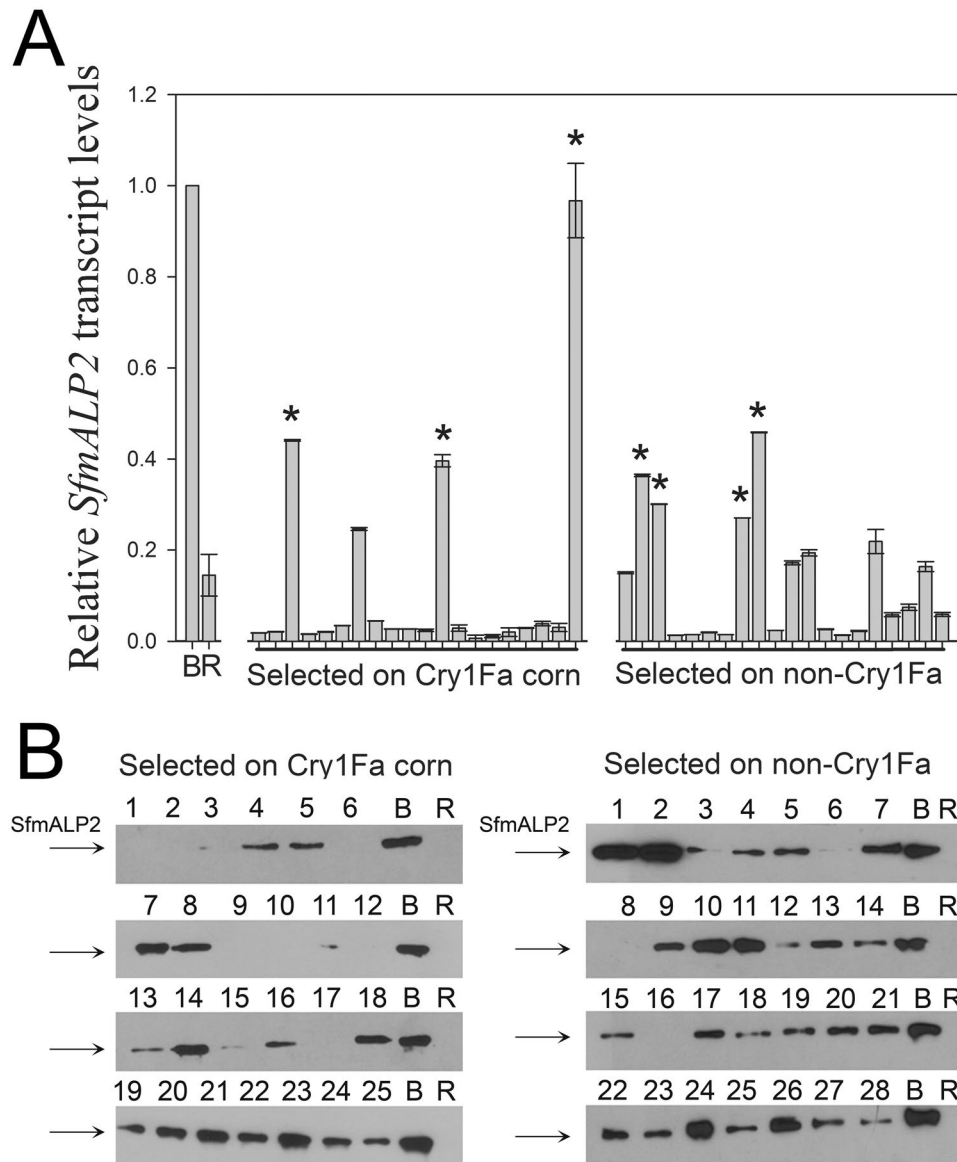


Figure 1. Lack of genetic linkage between reduced *SfmALP2* transcript (A) or protein (B) levels and resistance to corn event TC1507. (A) Relative *SfmALP2* transcript levels in individual larvae from backcross families selected on Cry1Fa (TC1507) or non-transgenic isolate (non-Cry1Fa) corn, as indicated. The relative transcript levels were measured by quantitative real time PCR using the $2^{-\Delta\Delta C_t}$ method. Each bar represents the mean transcript levels and corresponding SE calculated from three technical replicates of individual insects relative to levels in the Benzon (susceptible, B) strain samples, which were considered as 1.0 for calculations. Asterisks denote significantly higher *SfmALP2* transcript levels when compared to 456LS3 (One Way ANOVA and post-hoc Holm-Sidak multiple comparison $P < 0.01$). (B) Western blots with BBMV proteins isolated from individual midguts of the backcross progenies selected on TC1507 or the non-transgenic isolate, as indicated, and probed with antisera detecting SfmALP2. Levels of detection for Benzon (B) and 456LS3 (R) are shown for relative comparison. Regions containing the cross-reactive SfmALP2 bands were cropped from full-length Western blots that are included as Supplementary Information (Fig. S4). Gel images were not enhanced or modified for contrast.

susceptibility to Cry1Da as a negative control. This protein is active against *S. frugiperda*¹⁴, but it was inactive against any of the transformed or control Sf9 cells tested (Fig. 3B).

Historic-geographic detection of the *SfABCC2mut* allele in field populations of *S. frugiperda*. Migratory movement of *S. frugiperda* was suggested to explain cases of *S. frugiperda* resistance to TC1507 in Florida, Georgia and North Carolina⁷. To test this hypothesis, we genotyped archived *S. frugiperda* genetic materials from collections in Puerto Rico (2007, 2009, and 2017), Florida (2012, 2014 and 2016) and Dominican Republic (2015 and 2016) using the custom Taqman assay (Fig. S5) and confirming selected samples by DNA sequencing (data not shown). Genotyping of samples from Puerto Rico (Fig. 4) confirmed that

SfABCC2 MMDKSNKNTAANGNGQRAGEPKERVRKKPNILSRIFVWVIFPVLIITGNKRDVEEDDLIVPSKKFNSEKQGEYFERYWFEVVAIAEREDRDPSSLWKAMRR 100
SfABCC2mut MMDKSNKNTASNG---TAVGEPKERVRKKPNILSRIFVWVIFPVLIITGNKRDVEEDDLIVPSKKFNSEKQGEYFERYWFEVVAIAEREDRDPSSLWKAMRR 97

TM I TM II

SfABCC2 AYWLQYMPGAI FVLLISGLRTAQPLLF SGLLSYWSVDSEMSQQDAGLYALAMLGINFITMCTHNNL FVMRF SMKVIAAS SLLFRKLLRMSQVSGVDV 200
SfABCC2mut AYWLQYMPGAI FVLLISGLRTAQPLLF SGLLSYWSVDSEMSQQDAGLYALAMLGINFITMCTHNNL FVMRF SMKVIAAS SLLFRKLLRMSQVSGVDV 197

TM III TM IV

SfABCC2 AGGKLVNLLSNDVARFDYAFMFLHYLVVPLQGVVLYFVYDAAGWAPYVGLFGVILIMPLQAGLTKLTGVVRRMTAKRTDKRIKLMSEIINGIQVIMK 300
SfABCC2mut AGGKLVNLLSNDVARFDYAFMFLHYLVVPLQGVVLYFVYDAAGWAPYVGLFGVILIMPLQAGLTKLTGVVRRMTAKRTDKRIKLMSEIINGIQVIMK 297

TM V TM VI

SfABCC2 YAEKPFQLVVKAARAYEMSALRKSIFIRSMFLGFMLFTERSVMFLTVLTLAL TGNMISATLIYP IQQYFGIITMNVTLILPMAFASFSEMLISLERIQG 400
SfABCC2mut YAEKPFQLVVKAARAYEMSALRKSIFIRSMFLGFMLFTERSVMFLTVLTLAL TGNMISATLIYP IQQYFGIITMNVTLILPMAFASFSEMLISLERIQG 397

FLLDERSDIQITPKVNVGAGSKLFNNSKKEGLETGIVLPTKYSPTAN IARPMQDEPNMADYVQLNKVNATWADLNDNKEMTLKNISLRVRKNKLCA 500
SfABCC2mut FLLDERSDIQITPKVNVGAGSKLFNNSKKEGLETGIVLPTKYSPTAN IARPMQDEPNMADYVQLNKVNATWADLNDNKEMTLKNISLRVRKNKLCA 497

VIGPVGSGKTSLLQLLREL PVTSGNLSISGTVSYASQEPWLPATVRENILFGLEYNVAKYKEVCKVCSLLPDFKQFPYGDLSLVGERGVSLSGGQRAR 600
SfABCC2mut VIGPVGSGKTSLLQLLREL PVTSGNLSISGTVSYASQEPWLPATVRENILFGLEYNVAKYKEVCKVCSLLPDFKQFPYGDLSLVGERGVSLSGGQRAR 597

INLARAVYREADIYLLDDPLSAVDANVGRQLEDGCIKGYLSGKTCILVTHQIHYLKAADFIVVLN EGSVENMGSYDELMTGT EFSMLLSDQASEGSDTD 700
SfABCC2mut INLARAVYREADIYLLDDPLSAVDANVGRQLEDGCIKGYLSGKTCILVTHQIHYLKAADFIVVLN EGSVENMGSYDELMTGT EFSMLLSDQASEGSDTD 697

TM VII

SfABCC2 KKERPAMMRG ISKMSVKSDDEEGEEKVQVLEAEERQSGSLKWDVLRGYMKS VNSWCMVMAFLVIVITQGAATTDYLSFWINQVDGYIQTLPAGESPN 800
SfABCC2mut KKERPAMMRG ISKMSVKSDDEEGEEKVQVLEAEERQSGSLKWDVLRGYMKS VNSWCMVMAFLVIVITQGAATTDYLSFWINQVDGYIQTLPAGESPN 746

TM VIII

SfABCC2 PELNTQVGLLTGQYLVHGSVLAIIILITQVRILSFVMTMRASENLHNTIYEKLIIVAMRFFDTPNSGRVLRNRF SKDMGAMDELLPRSMLEVTQMYLS 900
SfABCC2mut PELNTQVGLLTGQYLVHGSVLAIIILITQVRILSFVMTMRASENLHNTIYEKLIIVAMRFFDTPNSGRVLRNRF SKDMGAMDELLPRSMLEVTQMYLS 890

TM IX TM X

SfABCC2 LASVVLNATLALPWTLIPPTVLMFIFVFLKWTINAAQAVKRLEGTTPVFGMINSTISGLSTIRSSNSQDRLLNSFDDAQNHLTSAFYTFLLGGSTAFG 1000
SfABCC2mut LASVVLNATLALPWTLIPPTVLMFIFVFLKWTINAAQAVKRLEGTTPVFGMINSTISGLSTIRSSNSQDRLLNSFDDAQNHLTSAFYTFLLGGSTAFG 990

TM XI TM XII

SfABCC2 LYLDLCLLIYLGIIIMSIFILGDFGE LIPVGSVGLAVSQSMVLTMMIQMAAKFTADFLGQMTAVERVLEYITKLPTEENMETGPTTPPKGWPSAGEVTFPSNV 1100
SfABCC2mut LYLDLCLLIYLGIIIMSIFILGDFGE LIPVGSVGLAVSQSMVLTMMIQMAAKFTADFLGQMTAVERVLEYITKLPTEENMETGPTTPPKGWPSAGEVTFPSNV 1090

VLYKSPDDPPVLKDLNFAIKSGWKVGVGRTGAGKSLISALFRLSDITGSIKIDGLDTQGIARKLLRSKISITIQEVPFLFASLRYNLDPEDFNDEIT 1200
SfABCC2mut VLYKSPDDPPVLKDLNFAIKSGWKVGVGRTGAGKSLISALFRLSDITGSIKIDGLDTQGIARKLLRSKISITIQEVPFLFASLRYNLDPEDFNDEIT 1190

WRALQVELKESIPALDYKVEGGTNSFMGQRQLVCLARAILRSNKILIMDEATANVDPQTDALIQKTRKQFATCTVLTIAHRLNTIMSDRVLVMDQG 1300
SfABCC2mut WRALQVELKESIPALDYKVEGGTNSFMGQRQLVCLARAILRSNKILIMDEATANVDPQTDALIQKTRKQFATCTVLTIAHRLNTIMSDRVLVMDQG 1290

VAAEFDHFYILLSNPNKFSMVKETGDNMSRILFEVAKTKYESDSKTA 1349
SfABCC2mut VAAEFDHFYILLSNPNKFSMVKETGDNMSRILFEVAKTKYESDSKTA 1339

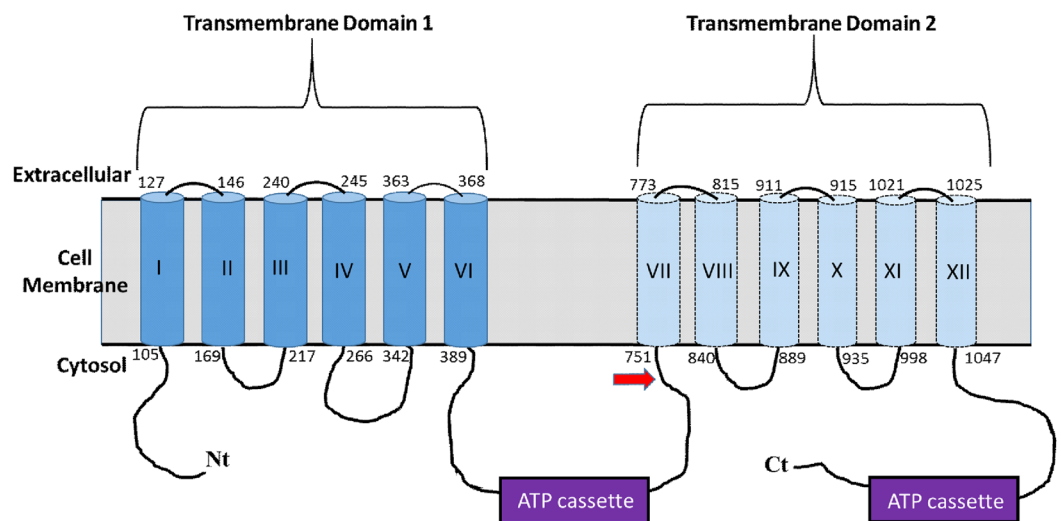


Figure 2. Alignment of the translated SfABCC2 and SfABCC2mut protein sequences (upper panel) and representative diagram of the predicted SfABCC2 protein structure and location of the mutation in SfABCC2mut (lower panel). In the sequence alignment the transmembrane regions are highlighted in blue, and the predicted ATP binding cassettes are highlighted in purple. The lower panel diagram is not drawn to scale and includes the localization of the ATP binding cassettes (purple “ATP cassette” boxes) and the approximate location of the mutation in SfABCC2mut (red arrow). Numbers indicate the amino acid residue at that location. The dotted lines and lighter blue color for the Transmembrane Domain 2 represent the predicted region missing in the truncated SfABCC2mut protein.

Strain/Cross	SS	Sr	rr	Total
Benzon	29	—	—	29
456LS3	—	—	31	31
F1 - Ben × 456LS3	—	25	—	25
Backcross on TC1507	—	8	42	50
Backcross on non-Bt	—	30	19	49

Table 1. Detection of SfABCC2mut allele in strains and crosses testing linkage with resistance to corn event TC1507 in the 456LS3 strain of S. frugiperda.

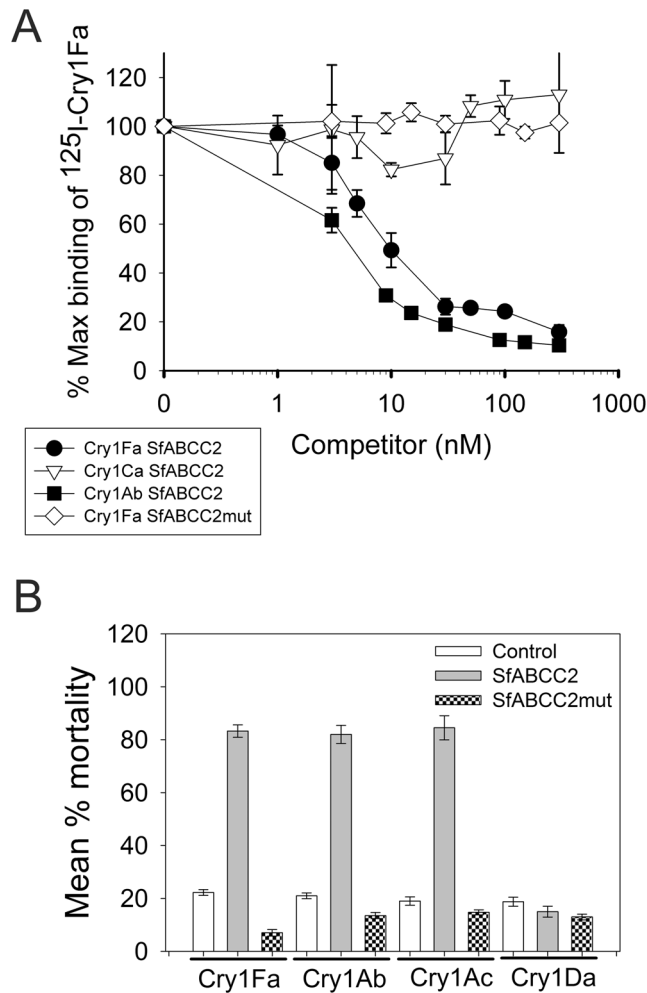


Figure 3. Competition of Cry1Fa binding (A) and cytotoxicity (B) in cells producing recombinant SfABCC2 or SfABCC2mut proteins. Curves in (A) display competition of ^{125}I -Cry1Fa binding to Sf9 cells producing the SfABCC2 or SfABCC2mut proteins, as indicated in the figure legend, by Cry1Fa (black circles and open diamonds), Cry1Ab (black squares) or Cry1Ca (open inverted triangles) as unlabeled competitors. Data shown are the means and corresponding standard errors from two independent experiments performed in duplicate ($N = 2$). (B) Cell mortality in cultures exposed to $0.1 \mu\text{g/ml}$ of Cry1Fa, Cry1Ab, Cry1Ac, or Cry1Da activated toxins. Mortality in cells infected with empty bacmid (control), cells producing SfABCC2, and cells producing SfABCC2mut was determined after incubation for 24 hours using trypan blue exclusion. Data shown are the means and corresponding standard errors from two independent experiments ($N = 2$).

the *SfABCC2mut* allele was present in low frequency in 2007 in the Isabela region (0.0138, $n = 169$), when field control failures were starting to be commonly reported⁵. Resistance spread to Juana Diaz where the allele was found at a relatively high frequency (0.4224, $n = 116$) in 2009. In the most recent collection of *S. frugiperda* larvae in Puerto Rico (Salinas municipality, close to Juana Diaz), the frequency of the resistance allele was the highest detected (0.5526, $n = 76$). In contrast, we did not detect the *SfABCC2mut* allele in any of the 246 moths genotyped from different counties in Florida (collected in 2012, 2014 or 2016), or the 90 from two municipalities in Dominican Republic (2015 and 2016).

Discussion

Extensive use of transgenic Bt crops for more than two decades has led to evolution of field-evolved resistance in selected lepidopteran pests, threatening sustainability of the technology and resulting in pest control failures at diverse geographies³⁻⁶. The need to hinder evolution of resistance to Bt crops makes it imperative to understand the molecular mechanisms involved. In this study we report SfABCC2 as a functional Cry1Fa/Cry1A receptor in *S. frugiperda* and identify a mutation tightly linked to field-evolved resistance to transgenic corn event TC1507 producing the Cry1Fa toxin (Herculex 1[®]) in *S. frugiperda* populations from Puerto Rico. We also demonstrate the detection of this mutant allele (*SfABCC2mut*) in current and archived field-collected *S. frugiperda* genetic samples. Genotyping data support that the *SfABCC2mut* allele emerged and exists at high frequency in Puerto Rico but it is not detected in migratory *S. frugiperda* destinations in the Caribbean and Florida.

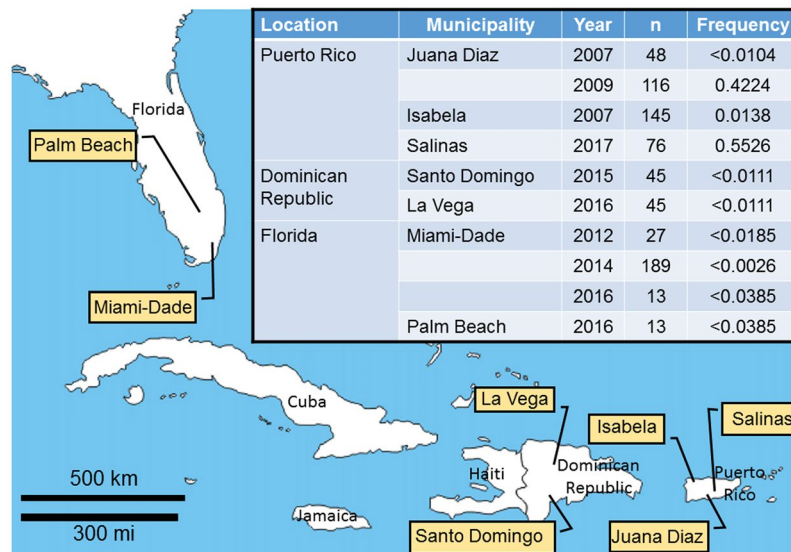


Figure 4. Frequency of the *SfABCC2mut* allele in archived and recent *S. frugiperda* field collections from Puerto Rico, Florida and Dominican Republic. Shown in the map are the collection locations. The table inset presents the frequency of the *SfABCC2mut* allele depending on location and year of collection, as well as the number of individuals genotyped (n). Frequency is calculated based on data in Table S1 using the Hardy-Weinberg equilibrium model as described in the Materials and Methods section. The map shown was modified from http://www.d-maps.com/carte.php?num_car=1384&lang=en.

Data from linkage tests in this study did not support a previous hypothesis that reduced *SfmALP2* transcript and protein levels were linked with resistance to TC1507 corn in 456LS3 larvae¹². This discrepancy could be explained by the *SfABCC2mut* allele influencing expression of *SfmALP2*. While further work would be needed to test this hypothesis, silencing of the *PxABCC2* gene in *Plutella xylostella* (L.) larvae did not affect expression of the *PxmALP* gene orthologous to *SfmALP2*¹⁵. Alternatively, it is possible that reduced *SfmALP2* levels may increase resistance levels in individuals that are already homozygous for the *SfABCC2mut* allele. In support of this hypothesis, we did not detect larvae with relatively high *SfmALP2* levels among survivors of exposure to TC1507 corn. Consequently, larvae displaying lower levels of *SfmALP2* expression were in higher proportion among survivors of exposure to Cry1Fa corn compared to the treatment with non-transgenic isolate, which may help explain the reported association between lower ALP levels and resistance to Cry1Fa¹².

Mutations in ATP binding cassette genes have been reported to be linked to resistance against Cry1^{16–19}, Cry2²⁰, and Cry3²¹ toxins. In the case of *Spodoptera* spp., resistance against Cry1Ca in a strain of *S. exigua* (Hübner) was linked to a mutation in an ABCC2 gene²². Importantly, silencing of expression of that ABCC2 gene in *S. exigua* larvae led to reduced susceptibility to Cry1Ca as well as Cry1Ac. This information is in discrepancy with our findings identifying *SfABCC2* as a shared Cry1Fa–Cry1A receptor that is not recognized by Cry1Ca in *S. frugiperda*. Moreover, Cry1A and Cry1Ca toxins have been demonstrated not to share binding sites in *Spodoptera* spp.^{12,23} and the 456LS3 strain is resistant to Cry1Fa, Cry1Ac and Cry1Ab but remains susceptible to Cry1Ca and displays unaltered Cry1Ca binding¹². These discrepancies suggest that silencing of ABCC2 genes in *S. exigua* may have unintended effects on expression of non-target genes affecting Cry1Ca mode of action, or that Cry1Ca and Cry1A toxins do bind to the same ABCC2 proteins but recognize different binding epitopes on these proteins. In any case, we did not detect specific Cry1Fa toxin binding or toxicity against Sf9 cells producing *SfABCC2mut*. Considering currently proposed models²⁴, it is plausible that lack of an available *SfABCC2* in an open state prevents binding of Cry1Fa toxin oligomers and lateral movement into the membrane for pore formation.

While a small set of insects were tested, results from genotyping *S. frugiperda* genetic materials allow for estimations of allele frequencies in the collected insects, which should reflect population frequencies. Results from genotyping archived materials support that the *SfABCC2mut* allele was present in Puerto Rico as early as 2007. The time course of increased *SfABCC2mut* allele frequency from 2007 to 2009 corresponds with increased observations of TC1507 damage by *S. frugiperda* in Puerto Rico⁵. This increase after only two years (2007–2009) occurred even after corn event TC1507 was withdrawn from the local market²⁵, suggesting that the presence of TC1507 was not necessary to maintain the allele in field populations. These observations and the consistently high levels of resistance detected in Puerto Rico 5 years after the initial resistance report²⁶, are in agreement with the lack of significant fitness costs for the *SfABCC2mut* allele detected under laboratory conditions²⁷.

Recent studies reported Cry1F resistance allele frequencies in Florida, Louisiana, and North Carolina at between 10–29%, suggesting widespread regional establishment of the resistance trait at a substantial frequency^{7,28}. The ability to detect the *SfABCC2mut* allele by PCR provides a new genetic marker for monitoring fall armyworm migratory movements, with the current data providing no evidence for substantial northward migrations from Puerto Rico into Florida. The *SfABCC2mut* allele frequency in Puerto Rico populations has not greatly vary since resistance was examined in 2009 and ranged from 42% in 2009 to 55% in 2017. We compared this to frequencies

guts dissected to purify BBMV, total RNA or genomic DNA, which were used for protein detection, quantitative PCR or Taqman genotyping (25–50 individuals per experiment from each subfamily). Statistical deviation of observed from expected proportions of heterozygote and homozygote resistant individuals were evaluated using the chi-squared test.

Brush border membrane vesicle (BBMV) preparation. Individual (for linkage experiments) or pooled (for binding assays) guts dissected from fourth instar *S. frugiperda* larvae were used for preparation of BBMV by the differential centrifugation method³³ as previously modified³⁴. The final BBMV pellet was resuspended in ice-cold PBS solution (2 mM KCl, 135 mM NaCl, 1.7 mM KH₂PO₄, 10 mM Na₂HPO₄, pH 7.5) and total protein quantified using the Qubit fluorimeter using a protein assay kit (Invitrogen). The purity of the final BBMV preparations was determined using the enrichment in aminopeptidase-N (APN) and alkaline-phosphatase (ALP) activities compared to initial midgut homogenates as described elsewhere³⁵. The APN and ALP activities were enriched 4–5 times in the final BBMV preparation compared to the initial midgut homogenates.

Quantitative PCR. Relative quantification of *SfmALP2* transcript levels was performed as described previously¹² using the Trizol reagent (Invitrogen) to extract total RNA from individually dissected midguts of 4th instar larvae. A cDNA template was then prepared from 2 µg of the total RNA with random hexamer primers using the High capacity cDNA reverse transcription kit (Invitrogen) according to the manufacturer's instructions. Primers used for amplification of *SfmALP2* were (listed in 5' to 3' orientation) ALPFwd: GGCTTTCTGCCCAACTGT and ALPRev: TCTACGAGCCAATCAACG, while the ribosomal reference gene *SfL18* (GenBank AF395587.1) was amplified with primers SfL18Fwd: CGTATCAACCGACCTCCACT and SfL18Rev: AGGCACCTTGATAGAGCCTCA. Reactions were performed using 10-fold diluted cDNA from single midgut samples and using three technical replicates in an ABI 7900HT fast Real time PCR system (Applied Biosystems) on standard mode using the Quant6 studio flex manager software to collect the threshold cycle (Ct) values. The final reaction volume was 20 µl and included 200 ng of cDNA, 0.4 µM primers and 10 µl Power SYBR Green PCR Master Mix (Applied Biosystems). The cycling conditions included initial incubation of 55 °C for 2 minutes, and then denaturation at 95 °C for 10 minutes, followed by 40 cycles at 95 °C for 15 s, 55 °C for 30 s and 68 °C for 30 s, and a final step at 95 °C for 15 s. A single amplification peak was obtained for each reaction from the dissociation curves. Amplification efficiencies were greater than 90 percent for all the primer pairs used. Normalization of the relative transcript level was done using the *SfL18* levels and calculating the relative *SfmALP2* transcript levels using the $2^{-\Delta\Delta Ct}$ method³⁶. Relative expression was standardized considering the gene transcript levels detected for the Benzon strain as 1.

Protein domain prediction. The ORF and amino acid sequence of the SfABCC2 protein were predicted using the ORF finder software (<http://www.ncbi.nlm.nih.gov/gorf/gorf.html>) and the online protein translation tool at the ExPASy Bioinformatics resource portal (<http://web.expasy.org/translate/>), respectively. The transmembrane topology was predicted using the Phobius web server³⁷, and the ATP binding cassettes were predicted using a BLAST search of the Conserved Domains Database in NCBI (<http://www.ncbi.nlm.nih.gov/cdd>).

Cry toxin binding assays. After thawing on ice, cell pellets were suspended in 300 µl of PBS pH 7.4 buffer and total protein quantified using the Qubit fluorimeter (Invitrogen). All cell samples were diluted to the same concentration (4.97 mg/ml) with PBS pH 7.4 buffer. Binding experiments were performed as described elsewhere¹² using 3.8 nM ¹²⁵I-Cry1Fa and 99.4 µg of Sf9 cell proteins in 100 µl final volume of PBS pH 7.4 plus 0.1% BSA. For competition assays, reactions included increasing concentrations of unlabeled Cry1Fa, Cry1Ab or Cry1Ca toxins. Two technical replicates were performed for each of the two biological replicates tested. The KELL software package (Biosoft, Cambridge, United Kingdom) was used to obtain representative binding affinity constant (*Kd*) and concentration of receptors (*Bmax*) values for toxins displacing Cry1Fa toxin binding to the cells.

Cytotoxicity Assays. After 24 hours post-infection with recombinant virus, the infected cells were diluted 1:1 in fresh media containing Cry toxins at a 0.1 µg/ml final concentration. All treatments were performed in duplicate. The tubes were placed on a wheel and incubated for 24 hours at 27 °C. The following day, 30 µl aliquots of the treatments were diluted with an equal volume of 0.4% trypan blue dye and viability determined using a Countess automated cell counter (Invitrogen).

Genotyping assays. The origin and number of the archived and recent field collected samples analyzed are shown in Table S1. Moths were captured using sex pheromone baited traps³⁸ and collections extended over 7 days at sites near corn or cotton plantings to optimize trap capture efficiency of corn strain males. The collected specimens were identified as *S. frugiperda* by morphology then stored in a –20 °C freezer until required for analysis. Genomic DNA was isolated from individual carcasses of fifth instar larvae or adults using the Pure Link Genomic DNA mini kit (Invitrogen), following manufacturer's protocols, and then quantified using a nanodrop spectrophotometer. Reactions for the Taqman[®] custom SNP Genotyping assay (Invitrogen) had a final volume of 10 µl in wells of a Micro Amp Fast optical 96 well reaction plate (Applied Biosystems) and followed manufacturer's instructions. Reactions included 10–20 ng of genomic DNA as template, a VIC-labeled probe specific to the *SfABCC2mut* allele (5' AAGCATCGCCACTT 3'), a FAM-labeled probe specific to the *SfABCC2* allele (5' CCAAGCACATCCCACTT 3'), and the forward (5' TGGAGGCCGAAGAGAGACA 3') and reverse (5' AGGAGTTGACTGACTTCATGTACTT 3') primers. The plate was run in the Quant studio 6 Real Time PCR instrument (Applied Biosystems) using the following conditions: pre read stage at 60 °C for 30 seconds, hold stage at 95 °C for 10 minutes, PCR stage at 95 °C for 15 seconds and 60 °C for 1 minute for 40 cycles, post read stage at 60 °C for 30 seconds. The fluorescence in each well was measured in the post read stage of the PCR, and the software generated an allelic discrimination plot based on the post amplification intensity of the fluorescent probes.

Frequency of the resistant *SfABCC2mut* allele was determined using the Hardy-Weinberg equation under the assumption that selection was not present after removal of TC1507 from Puerto Rico in 2007²⁶. We used the formula: $F = (2 \times \text{ObsAa} + \text{Obsaa}) / [2 \times (\text{ObsAA} + \text{ObsAa} + \text{Obsaa})]$; where “F” is the frequency of the allele “a” (*SfABCC2mut*) and “Obs” the observed frequency of each of the three possible genotypes.

Statistical analyses. Significant differences in *SfmALP2* transcript levels among individual larvae in linkage analyses were examined for means from three technical replicates for each sample using One Way ANOVA and post-hoc Holm-Sidak multiple comparison tests with $P < 0.01$ considering transcript levels detected for the 456 sample as reference. Similarly, significance of differences in Sf9 cell mortality in response to treatment with toxins or control buffer were tested considering values from two replicated assays using cells from two independent transfections ($n = 2$) using One Way ANOVA and post-hoc Holm-Sidak multiple comparison tests with $P < 0.01$.

Data availability. The raw data used to prepare the figures and that support the findings of this study and the supplementary information are available from the corresponding author upon reasonable request.

References

- James, C. 20th Anniversary (1996 to 2015) of the Global Commercialization of Biotech Crops and Biotech Crop Highlights in 2015. (ISAAA Brief No. 51, Ithaca, NY, 2015).
- Fernandez-Cornejo, J., Wechsler, S., Livingston, M. & Mitchell, L. (ERR-162 U. S. Department of Agriculture, Economic Research Service, 2014).
- van Rensburg, J. B. J. First report of field resistance by stem borer, *Busseola fusca* (Fuller) to Bt-transgenic maize. *S. Afr. J. Plant Soil* **24**, 147–151 (2007).
- Dhuria, S. & Gujar, G. T. Field-evolved resistance to Bt toxin Cry1Ac in the pink bollworm, *Pectinophora gossypiella* (Saunders) (Lepidoptera: Gelechiidae), from India. *Pest Manag. Sci.* **67**, 898–903 (2011).
- Storer, N. P. *et al.* Discovery and characterization of field resistance to Bt maize: *Spodoptera frugiperda* (Lepidoptera: Noctuidae) in Puerto Rico. *J. Econ. Entomol.* **103**, 1031–1038 (2010).
- Farias, J. R. *et al.* Field-evolved resistance to Cry1F maize by *Spodoptera frugiperda* (Lepidoptera: Noctuidae) in Brazil. *Crop Prot.* **64**, 150–158 (2014).
- Huang, F. *et al.* Cry1F resistance in fall armyworm *Spodoptera frugiperda*: single gene versus pyramided Bt maize. *PLoS One* **9**, e112958 (2014).
- Gassmann, A. J., Petzold-Maxwell, J. L., Keweshan, R. S. & Dunbar, M. W. Field-evolved resistance to Bt maize by Western corn rootworm. *PLoS ONE* **6**, e22629 (2011).
- Adang, M., Crickmore, N. & Jurat-Fuentes, J. L. in *Advances in Insect Physiology Vol. 47: Insect Midgut and Insecticidal Proteins* (eds T. S. Dhadialla & S. Gill) 39–87 (Academic Press, 2014).
- Ferré, J. & Van Rie, J. Biochemistry and genetics of insect resistance to *Bacillus thuringiensis*. *Annu. Rev. Entomol.* **47**, 501–533 (2002).
- Fabrick, J. A. *et al.* Alternative splicing and highly variable cadherin transcripts associated with field-evolved resistance of pink bollworm to bt cotton in India. *PLoS One* **9**, e97900 (2014).
- Jakka, S. R. *et al.* Field-evolved Mode 1 resistance of the fall armyworm to transgenic Cry1Fa-expressing corn associated with reduced Cry1Fa toxin binding and midgut alkaline phosphatase expression. *Appl Environ Microbiol* **82**, 1023–1034 (2015).
- Kwa, M. S., de Maagd, R. A., Stiekema, W. J., Vlak, J. M. & Bosch, D. Toxicity and binding properties of the *Bacillus thuringiensis* delta-endotoxin Cry1C to cultured insect cells. *J. Invertebr. Pathol.* **71**, 121–127 (1998).
- Monnerat, R. *et al.* Genetic variability of *Spodoptera frugiperda* Smith (Lepidoptera: Noctuidae) populations from Latin America is associated with variations in susceptibility to *Bacillus thuringiensis* Cry toxins. *Appl. Environ. Microbiol.* **72**, 7029–7035 (2006).
- Guo, Z. *et al.* MAPK signaling pathway alters expression of midgut ALP and ABCC genes and causes resistance to *Bacillus thuringiensis* Cry1Ac toxin in diamondback moth. *PLoS Genet.* **11**, e1005124 (2015).
- Gahan, L. J., Pauchet, Y., Vogel, H. & Heckel, D. G. An ABC transporter mutation is correlated with insect resistance to *Bacillus thuringiensis* Cry1Ac toxin. *PLoS Genet.* **6**, e1001248 (2010).
- Baxter, S. W. *et al.* Parallel evolution of *Bacillus thuringiensis* toxin resistance in Lepidoptera. *Genetics* **189**, 675–679 (2011).
- Xiao, Y. *et al.* Mis-splicing of the ABCC2 gene linked with Bt toxin resistance in *Helicoverpa armigera*. *Sci Rep* **4**, 6184 (2014).
- Atsumi, S. *et al.* Single amino acid mutation in an ATP-binding cassette transporter gene causes resistance to Bt toxin Cry1Ab in the silkworm, *Bombyx mori*. *Proc. Natl. Acad. Sci. USA* **109**, E1591–E1598 (2012).
- Tay, W. T. *et al.* Insect resistance to *Bacillus thuringiensis* toxin Cry2Ab is conferred by mutations in an ABC transporter subfamily A protein. *PLoS Genet.* **11**, e1005534 (2015).
- Pauchet, Y., Bretschneider, A., Augustin, S. & Heckel, D. G. A P-glycoprotein is linked to resistance to the *Bacillus thuringiensis* Cry3Aa toxin in a leaf beetle. *Toxins (Basel)* **8**, 362 (2016).
- Park, Y. *et al.* ABCC transporters mediate insect resistance to multiple Bt toxins revealed by bulk segregant analysis. *BMC Biol.* **12**, 46 (2014).
- Lu, Q. *et al.* The binding characterization of Cry insecticidal proteins to the brush border membrane vesicles of *Helicoverpa armigera*, *Spodoptera exigua*, *Spodoptera litura* and *Agrotis ipsilon*. *Journal of Integrative Agriculture* **12**, 1598–1605 (2013).
- Heckel, D. G. Learning the ABCs of Bt: ABC transporters and insect resistance to *Bacillus thuringiensis* provide clues to a crucial step in toxin mode of action. *Pestic. Biochem. Physiol.* **104**, 103–110 (2012).
- Matten, S. R., Head, G. P. & Quemada, H. D. in *Integration of insect resistant genetically modified crops within IPM programs* (eds J. Romeis, A. M. Shelton, & G. G. Kennedy) 27–39 (Springer, 2008).
- Storer, N. P., Kubiszak, M. E., Ed King, J., Thompson, G. D. & Santos, A. C. Status of resistance to Bt maize in *Spodoptera frugiperda*: Lessons from Puerto Rico. *J. Invertebr. Pathol.* **110**, (294–300) (2012).
- Jakka, S. R., Knight, V. R. & Jurat-Fuentes, J. L. Fitness costs associated with field-evolved resistance to Bt maize in *Spodoptera frugiperda* (Lepidoptera: Noctuidae). *J. Econ. Entomol.* **107**, 342–351 (2014).
- Vélez, A. M. *et al.* Inheritance of Cry1F resistance, cross-resistance and frequency of resistant alleles in *Spodoptera frugiperda* (Lepidoptera: Noctuidae). *Bull. Entomol. Res.* **103**, 700–713 (2013).
- Blanco, C. A. *et al.* Susceptibility of isofamilies of *Spodoptera frugiperda* (Lepidoptera: Noctuidae) to Cry1Ac and Cry1Fa proteins of *Bacillus thuringiensis*. *Southwest. Entomol.* **35**, 409–415 (2010).
- Jakka, S. R., Knight, V. R. & Jurat-Fuentes, J. L. *Spodoptera frugiperda* (J. E. Smith) with field-evolved resistance to Bt maize are susceptible to Bt pesticides. *J. Invertebr. Pathol.* **122**, 52–54 (2014).
- Meade, T. *et al.* Combined use of Cry1Da and Cry1Fa proteins for insect resistance management. US 20120331589 A1 (2012).
- Gouffon, C., Van Vliet, A., Van Rie, J., Jansens, S. & Jurat-Fuentes, J. L. Binding sites for *Bacillus thuringiensis* Cry2Ae toxin on heliothine brush border membrane vesicles are not shared with Cry1A, Cry1F, or Vip3A toxin. *Appl. Environ. Microbiol.* **77**, 3182–3188 (2011).

33. Wolfersberger, M. *et al.* Preparation and partial characterization of amino acid transporting brush border membrane vesicles from the larval midgut of the cabbage butterfly (*Pieris brassicae*). *Comp. Biochem. Physiol.* **86A**, 301–308 (1987).
34. Jurat-Fuentes, J. L., Gould, F. L. & Adang, M. J. Altered Glycosylation of 63- and 68-kilodalton microvillar proteins in *Heliothis virescens* correlates with reduced Cry1 toxin binding, decreased pore formation, and increased resistance to *Bacillus thuringiensis* Cry1 toxins. *Appl. Environ. Microbiol.* **68**, 5711–5717 (2002).
35. Jurat-Fuentes, J. L. & Adang, M. J. Characterization of a Cry1Ac-receptor alkaline phosphatase in susceptible and resistant *Heliothis virescens* larvae. *Eur. J. Biochem.* **271**, 3127–3135 (2004).
36. Livak, K. J. & Schmittgen, T. D. Analysis of relative gene expression data using real-time quantitative PCR and the $2^{-\Delta\Delta CT}$ method. *Methods* **25**, 402–408 (2001).
37. Kall, L., Krogh, A. & Sonnhammer, E. L. Advantages of combined transmembrane topology and signal peptide prediction—the Phobius web server. *Nucleic Acids Res* **35**, W429–432 (2007).
38. Meagher, R. L. Trapping fall armyworm (Lepidoptera: Noctuidae) adults in traps baited with pheromone and a synthetic floral volatile compound. *Fla. Entomol.* **84**, 288–292 (2001).

Acknowledgements

This work was supported by Biotechnology Risk Assessment Grant Program competitive grant No. 2014–33522–22215 from the USDA National Institute of Food and Agriculture and Agricultural Research Service.

Author Contributions

R.B., J.H., and J.L.J.F. conceived and designed the work; J.H., R.M., R.N., and F.H. provided samples and materials; R.B., J.H., R.M., R.N., L.H., F.H. and J.L.J.F. contributed to data collection; R.B., J.H., R.M., R.N., F.H., F.N. and J.L.J.F. contributed to data analysis and interpretation; R.B. and J.L.J.F. drafted the article; and J.H., R.M., R.N., F.H., K.N., and J.L.J.F. performed a critical revision of the article in preparation for submission.

Additional Information

Supplementary information accompanies this paper at doi:[10.1038/s41598-017-09866-y](https://doi.org/10.1038/s41598-017-09866-y)

Competing Interests: The authors declare that they have no competing interests.

Publisher's note: Springer Nature remains neutral with regard to jurisdictional claims in published maps and institutional affiliations.



Open Access This article is licensed under a Creative Commons Attribution 4.0 International License, which permits use, sharing, adaptation, distribution and reproduction in any medium or format, as long as you give appropriate credit to the original author(s) and the source, provide a link to the Creative Commons license, and indicate if changes were made. The images or other third party material in this article are included in the article's Creative Commons license, unless indicated otherwise in a credit line to the material. If material is not included in the article's Creative Commons license and your intended use is not permitted by statutory regulation or exceeds the permitted use, you will need to obtain permission directly from the copyright holder. To view a copy of this license, visit <http://creativecommons.org/licenses/by/4.0/>.

© The Author(s) 2017