

RESEARCH ARTICLE

Open Access



Platelet volume indices are associated with systolic and diastolic cardiac dysfunction, and left ventricular hypertrophy

Shu-ichi Fujita^{1†}, Yoshihiro Takeda^{1†}, Shun Kizawa¹, Takahide Ito¹, Kazushi Sakane¹, Toshiyuki Ikemoto², Yoshikatsu Okada², Koichi Sohmiya¹, Masaaki Hoshiga¹ and Nobukazu Ishizaka^{1*}

Abstract

Background: Mean platelet volume (MPV) and platelet distribution width (PDW) are indices that reflect platelet activity. We investigated the association between these platelet indices and left ventricular hypertrophy and cardiac function.

Methods: We analyzed the data of 1241 patients who were admitted to the Cardiology Department.

Results: Both MPV and PDW were selected as independent factors associated with left ventricular systolic and diastolic dysfunction, and left ventricular hypertrophy. The highest tertile of MPV and PDW was associated with left ventricular systolic dysfunction (left ventricular ejection fraction of <50 %) with an odds ratio of 1.53 and 2.03, respectively, when the respective lowest tertile was used as reference. The highest PDW tertile was associated with left ventricular hypertrophy with an odds ratio of 1.56 (95 % CI, 1.13–2.15) and with dysfunction with an odds ratio of 3.34 (95 % CI, 1.54–7.25).

Conclusions: Indices of platelet activation (MPV and/or PDW) were independently associated positively with left ventricular hypertrophy and left ventricular systolic and diastolic dysfunction. Whether these platelet indices represent useful markers for identifying individuals at higher risk for thromboembolic disease and organ damage among cardiac patients awaits further investigation.

Keywords: Platelet function, Left ventricular hypertrophy, Cardiac function, Antithrombotic drugs

Background

Activation of platelets and their subsequent aggregation play a key role in thrombus formation at the site of vascular injury and atherothrombotic events [1, 2]. Assessment of platelet activity and proper medical control are therefore mandatory for high-risk patients [3]; however, platelet aggregation after applying inducers, such as adenosine diphosphate (ADP) or 5-hydroxytryptamine, and collagen, is, in general, not measured in routine laboratory testing.

In comparison to smaller ones, larger platelets have higher thrombotic potential [4] that may be partially

attributed to a higher thromboxane A₂ level [5] and increased expression of glycoprotein Ib and IIb/IIIa receptors [6]. Mean platelet volume (MPV), which is the most accurate measure of platelet size, is a simple, easy to quantify, inexpensive, and widely available marker of platelet activation [7]. MPV has received substantial attention in the past few years for the purpose of risk prediction and risk stratification of various disorders, especially ischemic heart disease, in the cardiology field [4, 8–11]. Platelet distribution width (PDW), which is in general positively correlated with MPV, directly measures the variability in platelet size, and also represents a parameter of platelet activity [12]. Several previous studies have assessed PDW values among patients with acute coronary syndrome or coronary artery disease [13–15].

MPV may be increased in other cardiovascular conditions such as pulmonary arterial hypertension [16], hypertrophic

* Correspondence: ishizaka@poh.osaka-med.ac.jp

†Equal contributors

¹Department of Cardiology, Osaka Medical College, Takatsuki-shi Daigaku-machi 2-7, Osaka 569-8686, Japan

Full list of author information is available at the end of the article

cardiomyopathy [17], and decompensated heart failure [18, 19], which may explain the increase in thromboembolic events in these conditions [20]. Until now, only a few studies with small sample sizes have examined the relationship between MPV and left ventricular systolic and diastolic dysfunction, and left ventricular hypertrophy [21–23]. To this end, in the current study, we analyzed the relationship between platelet indices (MPV, PDW) and left ventricular systolic and diastolic cardiac dysfunction and hypertrophy among patients admitted to the Cardiology Department.

Methods

Study population

The current retrospective study was approved by the Ethics Committee of Osaka Medical College. Between January 2012 and March 2014, 1241 patients who were admitted to the Cardiology Department and had provided written informed consent and for whom sufficient information regarding the data analysis for the current study including echocardiographic data was available were enrolled in the current study. Left ventricular diastolic dysfunction (LVDD) was assessed among the patients with both sinus rhythm and left ventricular ejection fraction (LVEF) of $\geq 50\%$. Of 1241 overall study population, 821 patients were found to have both sinus rhythm and LVEF of $\geq 50\%$. Among these patients, however, echocardiographic data that was necessary for the determination of the presence or absence of diastolic dysfunction was not available in 237 patients due to the poor echocardiographic imaging. Therefore, data from subgroup of 584 patients were used for the analysis of the relationship between platelet indices and LVDD.

Laboratory analysis

C-reactive protein (CRP) and B-type natriuretic peptide (BNP) were measured by routine laboratory methods. The eGFR was calculated by the following Modification of Diet in Renal Disease equation for Japanese subjects: $eGFR \text{ mL/min/1.73 m}^2 = 194 \times (\text{serum creatinine})^{-1.094} \times (\text{age})^{-0.287}$ ($\times 0.739$, when female) [24]. eGFR of less than $60 \text{ mL/min/1.73 m}^2$ was defined as chronic kidney disease in the current study. MPV and PDW were analyzed within 2 h of venipuncture by automatic blood counter (ADVIA 2120i Hematology System; Siemens, Inc.) used for whole blood analysis, with an intra-assay coefficient of variation $<1.4\%$ and 5.9% , respectively.

Echocardiography

Echocardiographic examinations were performed as described previously [25]. Briefly, left ventricular (LV) volumes were calculated using the modified Simpson method in the apical 4-chamber view. For calculation of the LV mass (LVM), we used the formula proposed by

Devereux et al. [26] with modification: $0.8 \times 1.04 \times [(LVDD + IVST + PWT)^3 - LVDD^3] + 0.6$. LVM index (LVMI) was calculated as the ratio of LVM to the body surface area. Left ventricular hypertrophy (LVH) was defined to be present when the LVMI was greater than 118 g/m^2 (men) or 108 g/m^2 (women) [27]. The LVEF was calculated by modified Simpson's method using the apical 4-chamber view and left ventricular systolic dysfunction (LVSD) was defined to be present when LVEF was less than 50% .

LVDD was assessed as previously described [28]. Briefly, the deceleration time of the E wave (DcT) and peak velocities of early filling (E) and atrial filling (A) were measured, and the early peak diastolic mitral annulus velocity (e'), which was the mean of that obtained at the septal and lateral mitral annulus, was measured using pulsed wave tissue Doppler. LVDD was diagnosed when any the following criteria were met; (1) $E/e' \geq 15$, (2) $15 > E/e' \geq 8$ and $BNP \geq 200$, (3) $15 > E/e' \geq 8$, $E/A < 0.5$, and $DcT \geq 280 \text{ msec}$, (4) $15 > E/e' \geq 8$, $E/A < 0.5$ and presence of LVH.

Statistical analysis

Baseline characteristics were assessed with standard descriptive statistics. Data were expressed as either mean \pm standard deviation or median and interquartile range. A Pearson's correlation test was used to assess the correlation between two variables. For multivariate analysis, multivariate linear regression and multivariate logistic regression analyses were used. Data analysis was performed by SPSS statistics version 22.0 (IBM, Armonk, NY). A value of $P < 0.05$ was taken to be statistically significant.

Results

Patient characteristics

Among the 1241 patients enrolled, 910 were male (73%) and 1008 (81%) had sinus rhythm (Table 1). Only 53 (4%) patients were undergoing chronic hemodialysis. Platelet count was significantly negatively associated with MPV and PDW, and MPV showed a significant positive correlation with PDW (Fig. 1). Echocardiography showed that 263 (21%) patients had LVSD and 448 (36%) had LVH.

Relationship between antithrombotic drug usage and platelet indices

About one third of the study patients were taking anti-coagulant medication and more than half were taking aspirin and/or other antiplatelet drugs. Some platelet indices differed between the anti-thrombotic drug users and the non-users (Fig. 2); patients taking aspirin or clopidogrel had significantly lower MPV as compared with non-users (Fig. 2b). In addition, patients taking warfarin

Table 1 Clinical characteristics of the study patients

Variables	Women (n = 331)	Men (n = 910)
Age, years	71.1 ± 10.9	68.3 ± 10.8
Body mass index, kg/m ²	22.9 ± 4.1	23.7 ± 3.5
Chronic hemodialysis, n (%)	8 (2.4)	45 (4.9)
Ever smoker	55 (16.6)	721 (79.2)
Cardiac rhythm		
Sinus rhythm, n (%)	258 (77.9)	750 (82.4)
Atrial fibrillation, n (%)	45 (13.6)	107 (11.8)
Pacemaker, n (%)	17 (5.1)	38 (4.2)
Others, n (%)	11 (3.3)	15 (1.6)
Cardiovascular disease		
Ischemic heart disease, n (%)	173 (52.3)	681 (74.8)
Arrhythmic disease, n (%)	35 (10.6)	70 (7.7)
Cardiomyopathy, n (%)	113 (34.1)	217 (23.8)
Peripheral artery disease, n (%)	15 (4.5)	82 (9.0)
Valvular heart disease, n (%)	34 (10.3)	71 (7.8)
Medication		
ACE inhibitors/ARB, n (%)	150 (45.3)	524 (57.6)
Beta blockers, n (%)	123 (37.2)	372 (40.9)
Calcium channel blockers, n (%)	162 (48.9)	389 (42.7)
Loop diuretics, n (%)	102 (30.8)	202 (22.2)
Thiazide diuretics, n (%)	25 (7.6)	38 (4.2)
Aldosterone antagonist, n (%)	35 (10.6)	79 (8.7)
Aspirin, n (%)	166 (50.2)	658 (72.3)
Clopidogrel, n (%)	88 (26.6)	393 (43.2)
Any antiplatelet drug, n (%)	176 (53.2)	689 (75.7)
Warfarin, n (%)	78 (23.6)	202 (22.2)
NOAC, n (%)	40 (12.1)	79 (8.7)
Any anticoagulants, n (%)	118 (35.6)	281 (30.9)
Laboratory data		
White blood cell count, ×10 ³ /μL	5.67 (4.60–6.86)	6.07 (4.98–7.27)
Hemoglobin, g/dL	12.4 (11.2–13.5)	13.6 (12.3–14.8)
Platelet count, ×10 ³ /μL	212 (172–259)	201 (171–239)
Mean platelet volume, fL	8.1 (7.7–8.7)	8.2 (7.7–8.8)
Platelet distribution width, %	52.0 (47.3–56.2)	53.1 (48.3–58.0)
Serum creatinine, mg/dL	0.72 (0.62–0.93)	0.92 (0.80–1.13)
eGFR, mL/min/1.73 m ²	60.4 (45.9–71.8)	47 (37.3–55.9)
Echocardiographic data		
LV diastolic dimension, cm	4.6 (4.2–5.1)	4.9 (4.6–5.5)
LV systolic dimension, cm	2.9 (2.5–3.5)	3.3 (2.9–3.9)
LV ejection fraction, %	61 (54–68)	59 (51.0–65)
LV mass index, g/m ²	99 (83–123)	106 (89.9–128)

ACE, angiotensin converting enzyme; ARB, angiotensin receptor blockers; NOAC, non-warfarin novel oral anticoagulants. For the data of serum creatinine and eGFR, patients on chronic hemodialysis (n = 53) were excluded from the analysis

had a lower platelet count and higher MPV as compared with non-users (Fig. 2d, e), although these values did not significantly differ according to the use and non-use of non-warfarin novel oral anticoagulants (NOAC).

It was found that the MPV value in patients with atrial fibrillation (8.59 ± 0.91 fL) was significantly higher than that in patients with sinus rhythm (8.25 ± 0.87 fL, *P* < 0.001). When the comparison was limited to patients with sinus rhythm, the MPV values in patients with warfarin usage and that in patients without warfarin usage did not differ significantly (8.24 ± 0.87 fL versus 8.34 ± 0.87 fL, respectively, *P* = 0.202). In addition, MPV did not differ significantly between warfarin users and non-users among patients with sinus rhythm who were taking at least one anti-platelet medication (8.33 ± 0.86 fL [*n* = 92] versus 8.21 ± 0.87 fL [*n* = 669], *P* = 0.203) or among patients with sinus rhythm who were not taking any anti-platelet medication (8.35 ± 0.91 fL [*n* = 53] versus 8.35 ± 0.87 fL [*n* = 194], *P* = 0.959).

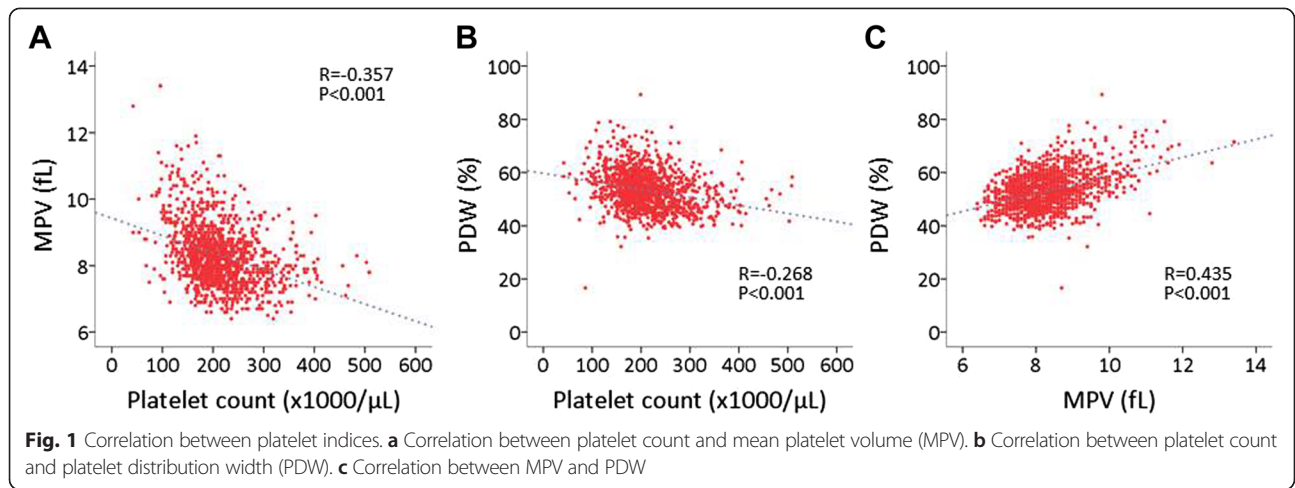
Relationship between platelet indices and left ventricular systolic function and hypertrophy

When the data were assessed in tertiles, the prevalence of LVSD seemed to increase according to the MPV (Fig. 3a) or PDW (Fig. 3b) tertile, but not the platelet count tertile. This tendency seemed to be less apparent for the prevalence of LVH (Fig. 3c, d). In univariate linear regression analysis, platelet count, MPV, and PDW were each significantly associated with both LVEF and LVMI (Table 2). When stepwise multivariate analysis was performed by entering all of the variables that used in univariate analysis, MPV and PDW, but not platelet count, were found to have a significant association with LVEF and LVMI.

Multivariate logistic regression analysis of the relationship with left ventricular systolic dysfunction and hypertrophy

Next, we performed multivariate logistic regression analyses using LVSD or LVH as a dependent variable (Tables 3 and 4). In this analysis, use of antiplatelet drugs and use of warfarin were entered as independent variables. Warfarin use was found to be, respectively, significantly and borderline significantly positively associated with LVSD and LVH. In model 1, where platelet indices were entered on a per 1 standard deviation (SD) basis, PDW was, respectively, significantly and borderline significantly associated with LVSD and LVH. In this model, the association between MPV and LVH was not significant; however, in an analysis adjusted for sex, age, anti-platelet drug use, and warfarin use, MPV was significantly associated with LVSD with an odds ratio of 1.26 (95 % CI 1.12–1.42, per 1 SD, *P* < 0.001).

In model 2, where platelet indices were entered as tertile basis, the highest tertile of MPV and PDW was associated

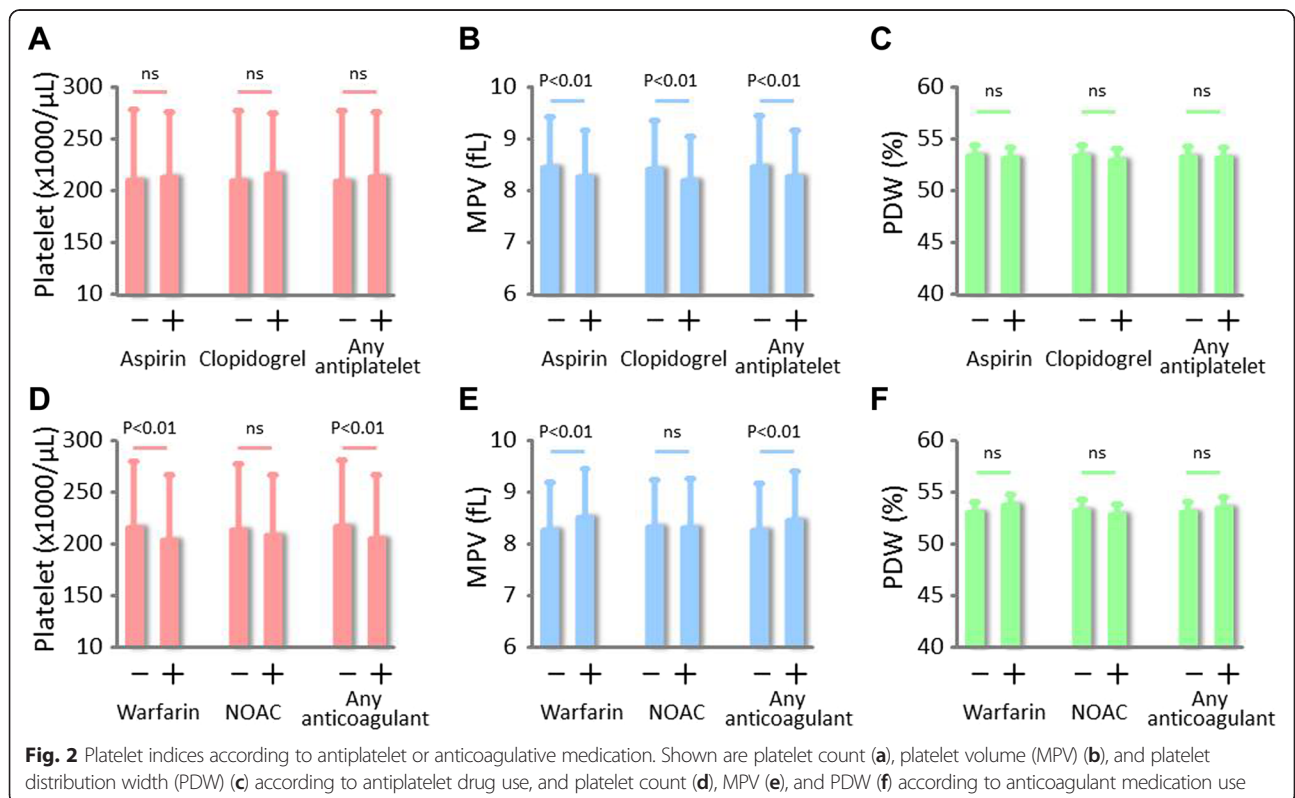


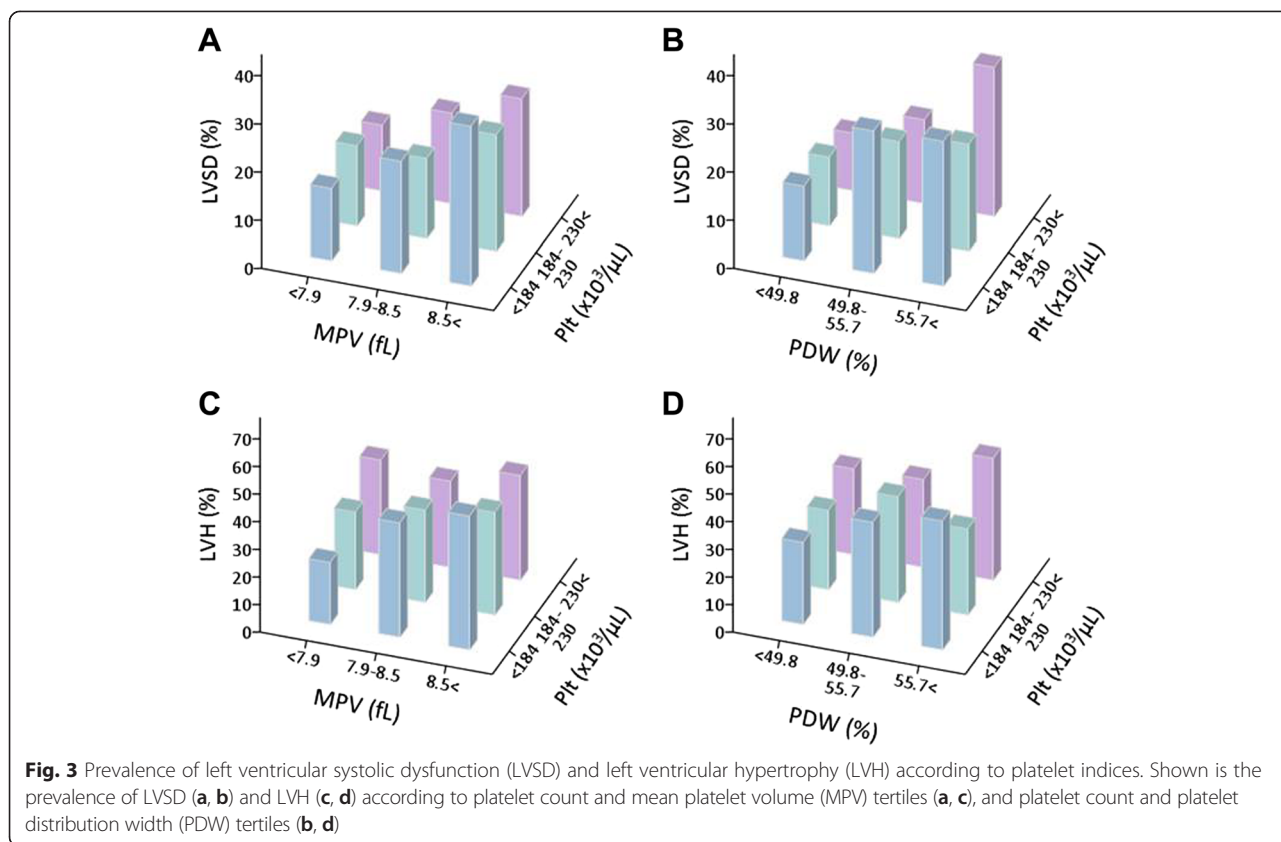
with LVSD with an odds ratio of 1.53 and 2.03, respectively, compared with the respective lowest tertile (Table 3).

Relationship between platelet indices and left ventricular diastolic dysfunction

Next, the relationship between platelet indices and LVDD was investigated. Among 584 patients for whom presence or absence of diastolic dysfunction was assessed, 71 patients (12.2 %) were found to have LVDD. In model 1 where platelet indices were entered on a per 1 SD basis, platelet

count and PDW, respectively, were found to be significantly negatively and positively associated with LVDD (Table 5). In this model, the association between MPV and LVDD was not significant; however, in an analysis adjusted for sex, age, anti-platelet drug use, and warfarin use, MPV was significantly associated with LVDD with an odds ratio of 1.34 (95 % CI, 1.02–1.76, per 1 SD, $P = 0.036$). In model 2, where platelet indices were entered on a tertile basis, the highest tertile of PDW was associated with LVDD with an odds ratio of 3.34 compared with the lowest tertile (Table 5).





Discussion

In the current study, we analyzed platelet indices and cardiac hypertrophy and left ventricular systolic and diastolic function among cardiac patients. In a univariate analysis, platelet count, MPV, and PDW were each correlated with LVEF and LVMI; however, stepwise multivariate regression analysis showed that MPV and PDW, but not platelet count, were independently associated with LVEF and LVMI. By multivariate logistic regression analysis, the highest tertile of MPV and PDW was associated with left ventricular systolic dysfunction (LVEF < 50 %) with an odds ratio of 1.53 and 2.03, respectively, as compared with the respective lowest tertile (Table 3). Platelet count and PDW were found to be independently associated with LVH and with LVSD. MPV was associated with both LVH and LVSD after adjusting for sex, age, anti-platelet drug usage, and warfarin usage; however, after further adjustment for covariates including platelet count and PDW, these associations lost statistical significance, which was explained, at least in part, by the inter-relationship among platelet count, MPV, and PDW (Fig. 1).

Some studies previously showed the relationship between MPV and cardiac function/hypertrophy [19, 21–23]. In the current study, more than 1200 patients were studied for the association between platelet indices and cardiac systolic dysfunction/hypertrophy, and more than 580 patients

were studied for the association between platelet indices and cardiac diastolic dysfunction. We also carefully assessed whether the antithrombotic medication use affected the observed relation between platelet indices and cardiac parameters. In addition, there have been no studies examining the relationship between platelet indices and heart failure in Japanese population.

Among the current study patients, approximately one-third and more than half, respectively, were taking anticoagulant medication and antiplatelet drugs. MPV values were lower among patients who were taking either aspirin or clopidogrel as compared with those who were not (Fig. 2b). Some studies have demonstrated that aspirin [29, 30] or dual antiplatelet therapy [31] may not significantly affect MPV, and one study showed a paradoxical increase in MPV after antiplatelet therapy was started [32], which might be related to a lack of patients response to clopidogrel [33]. The reason why antiplatelet drugs reduced MPV in the current study is unclear. Whether lower MPV values predict cardiovascular risk or restenosis after percutaneous coronary intervention among patients taking antiplatelet drugs [34] awaits future investigation.

Warfarin, but not NOAC, usage was found to be associated with the increased MPV value (Fig. 2e). Arik previously reported that MPV was not significantly altered by warfarin when it effectively prolonged international normalized ratio

Table 2 Linear regression analysis of factors associated with LVEF and LVMI

	Univariate		Multivariate (stepwise)	
	Std β	P value	Std β	P value
Dependent variable: LVEF				
Sex (male = 1)	-0.10	<0.001	-	
Age	0.07	0.011	0.14	<0.001
Systolic blood pressure	0.07	0.009	0.06	0.021
Chronic kidney disease	-0.12	<0.001	-0.12	<0.001
White blood cell count	-0.09	0.001	-0.06	0.034
Hemoglobin	0.06	0.047	0.08	0.007
Platelet	0.08	0.004	-	
MPV	-0.19	<0.001	-0.12	<0.001
PDW	-0.18	<0.001	-0.13	<0.001
Dependent variable: LVMI				
Sex (male = 1)	0.05	0.078	-	
Age	0.09	0.002	-	
Systolic blood pressure	0.09	0.002	0.09	0.001
Chronic kidney disease	0.15	<0.001	0.12	<0.001
White blood cell count	0.07	0.014	-	
Hemoglobin	-0.17	<0.001	-0.15	<0.001
Platelet count	-0.09	0.001	-	
MPV	0.15	<0.001	0.08	0.015
PDW	0.10	<0.001	0.07	0.016

among patients with non-valvular atrial fibrillation [35]. It has been reported that MPV is higher in patients with atrial fibrillation than in those with sinus rhythm [36, 37]. Because the association between warfarin use and MPV lost statistical significance, irrespective of antiplatelet drug use, when limited to the population with sinus rhythm in the current study, the association observed between warfarin and MPV may be attributed to the presence of atrial fibrillation. We also showed that NOAC did not affect platelet factors. In several previous studies, a relationship between MPV and left ventricular systolic function and hypertrophy has been reported: for example, MPV has been found to have a positive [22, 38] or no [39–41] association with LVH and a negative association with LVEF [21, 42]. On the other hand, most studies did not take PDW or antithrombotic drug use into account.

LVDD may increase the risk of stroke [43, 44]. Although previous studies demonstrated the platelet activation in patients with heart failure [20, 45], a relationship between platelet factors in patients with LVSD seems not to have been specifically investigated. Our study found that platelet count and PDW, respectively, were negatively and positively associated with LVDD among the subgroup of patients who had sinus rhythm and preserved left ventricular systolic function (Table 5). MPV was not independently associated with LVDD after full adjustment including PDW, which might be related to the fact that PDW is a more specific marker of platelet activation [46].

Table 3 Multivariate logistic regression analysis of factors associated with LVSD

Independent variables	Odds ratio (95 % CI)	P value	Odds ratio (95 % CI)	P value
	model 1		model 2	
Sex (male = 1)	1.08 (0.74–1.58)	0.700	1.07 (0.73–1.56)	0.743
Age, per 1SD	0.83 (0.71–0.97)	0.018	0.83 (0.71–0.97)	0.017
Systolic blood pressure, per 1SD	0.87 (0.75–1.01)	0.059	0.87 (0.75–1.01)	0.062
Chronic kidney disease	1.56 (1.03–2.36)	0.036	1.60 (1.05–2.43)	0.027
Any antiplatelet drugs	1.00 (0.72–1.38)	0.997	0.98 (0.71–1.35)	0.888
Warfarin	2.18 (1.58–2.99)	<0.001	2.18 (1.58–2.99)	<0.001
White blood cell count, per 1SD	1.19 (1.03–1.37)	0.016	1.18 (1.03–1.36)	0.017
Hemoglobin, per 1SD	0.78 (0.67–0.90)	0.001	0.79 (0.68–0.91)	0.001
Platelet count, per 1SD	0.90 (0.76–1.06)	0.206		
MPV, per 1SD	1.15 (0.98–1.35)	0.096		
PDW, per 1SD	1.25 (1.06–1.46)	0.007		
Middle platelet tertile			0.80 (0.56–1.14)	0.218
Highest platelet tertile			0.83 (0.56–1.23)	0.346
Middle MPV tertile			1.18 (0.80–1.73)	0.412
Highest MPV tertile			1.53 (1.04–2.27)	0.033
Middle PDW tertile			1.80 (1.22–2.64)	0.003
Highest PDW tertile			2.03 (1.37–3.02)	<0.001

In model 2, platelet indices used in model 1 were used replaced by tertile of these variables, and the odds ratio of the middle and the highest tertile was calculated using the corresponding lowest tertile

Table 4 Multivariate logistic regression analysis of factors associated with LVH

Independent variables	model 1		model 2	
	Odds ratio (95 % CI)	P value	Odds ratio (95 % CI)	P value
Sex (male = 1)	0.87 (0.63–1.19)	0.386	0.86 (0.62–1.18)	0.356
Age, per 1SD	0.93 (0.81–1.06)	0.264	0.93 (0.81–1.06)	0.276
Systolic blood pressure, per 1SD	1.22 (1.08–1.37)	0.002	1.22 (1.08–1.38)	0.001
Chronic kidney disease	1.69 (1.20–2.36)	0.002	1.75 (1.25–2.46)	0.001
Any antiplatelet drugs	0.80 (0.61–1.05)	0.103	0.79 (0.60–1.04)	0.092
Warfarin	1.30 (0.97–1.74)	0.075	1.30 (0.97–1.74)	0.074
White blood cell count, per 1SD	1.12 (0.99–1.27)	0.074	1.11 (0.98–1.26)	0.101
Hemoglobin, per 1SD	0.72 (0.63–0.82)	<0.001	0.72 (0.63–0.82)	<0.001
Platelet count, per 1SD	0.93 (0.81–1.07)	0.303		
MPV, per 1SD	1.10 (0.96–1.27)	0.171		
PDW, per 1SD	1.12 (0.98–1.29)	0.095		
Middle platelet tertile			0.80 (0.59–1.09)	0.160
Highest platelet tertile			0.94 (0.67–1.31)	0.697
Middle MPV tertile			1.15 (0.84–1.56)	0.388
Highest MPV tertile			1.28 (0.92–1.77)	0.139
Middle PDW tertile			1.39 (1.02–1.88)	0.035
Highest PDW tertile			1.56 (1.13–2.15)	0.007

In model 2, platelet indices used in model 1 were used replaced by tertile of these variables, and the odds ratio of the middle and the highest tertile was calculated using the corresponding lowest tertile

Table 5 Multivariate logistic regression analysis of factors associated with LVDD

Independent variables	model 1		model 2	
	Odds ratio (95 % CI)	P value	Odds ratio (95 % CI)	P value
Sex (male = 1)	0.42 (0.21–0.84)	0.014	0.37 (0.18–0.75)	0.006
Age, per 1SD	1.34 (0.95–1.89)	0.095	1.30 (0.92–1.83)	0.139
Systolic blood pressure, per 1SD	1.17 (0.89–1.56)	0.263	1.20 (0.91–1.60)	0.200
Chronic kidney disease	2.43 (1.12–5.30)	0.025	2.78 (1.24–6.24)	0.013
Any antiplatelet drugs	0.59 (0.30–1.15)	0.123	0.65 (0.33–1.29)	0.220
Warfarin	1.11 (0.47–2.61)	0.810	1.11 (0.47–2.62)	0.811
White blood cell count, per 1SD	1.54 (1.14–2.07)	0.005	1.52 (1.13–2.03)	0.005
Hemoglobin, per 1SD	0.50 (0.37–0.66)	<0.001	0.51 (0.38–0.67)	<0.001
Platelet count, per 1SD	0.62 (0.46–0.86)	0.003		
MPV, per 1SD	0.92 (0.66–1.29)	0.641		
PDW, per 1SD	1.41 (1.03–1.92)	0.031		
Middle platelet tertile			0.42 (0.21–0.82)	0.011
Highest platelet tertile			0.32 (0.15–0.67)	0.003
Middle MPV tertile			1.00 (0.49–2.04)	0.991
Highest MPV tertile			0.88 (0.42–1.86)	0.738
Middle PDW tertile			1.91 (0.90–4.05)	0.092
Highest PDW tertile			3.34 (1.54–7.25)	0.002

In model 2, platelet indices used in model 1 were used replaced by tertile of these variables, and the odds ratio of the middle and the highest tertile was calculated using the corresponding lowest tertile

Notably, however, MPV was associated with LVDD with an odds ratio of 1.34 (95 % CI 1.02–1.76) in a model adjusted for sex, age, and use of anti-platelet drugs and warfarin. Whether PDW and MPV are useful parameters for discriminating patients with LVDD and those at higher risk for future thromboembolic risk and target organ damage [38] needs to be investigated in future studies.

There are several limitations to the current study. First, we did not directly assess the platelet aggregation induced by ADP or other agonists. Second, because of the cross-sectional nature of the study, we did not have data regarding future thromboembolic risk among patients with high MPV or PDW value. Third, whether MPV and PDW are useful predictors of future thromboembolic risk and targets for pharmacological intervention should be investigated in future prospective studies. Fourth, as we did not directly measure the platelet function, some conclusions may be based on the speculative discussion. On the other hand, as MPV and PDW are easily acquired parameters, we may verify whether measurement of these parameters is of use for prediction of cardiovascular events in future studies.

Conclusion

In conclusion, we herein demonstrated that usage of anti-platelet drug and warfarin was related to MPV, and that the platelet indices MPV and PDW, but not platelet count, were independently associated with left ventricular systolic function and mass index. Among patients with preserved systolic function and sinus rhythm, the highest PDW tertile was associated with LVDD with an odds ratio of 1.56 (95 % CI, 1.13–2.15) when compared with the lowest PDW tertile after multivariate adjustment. Whether these platelet indices represent useful markers for discriminating those at higher risk for thromboembolic disease and organ damage among cardiac patients awaits further investigation.

Competing interests

The authors declare that they have no competing interests.

Authors' contributions

SF performed the statistical analysis. YT gathered the data and create database. SK gathered the data. TI (Takahide Ito) supervised the echocardiography. KS (Kazushi Sakane) made substantial contributions to acquisition and interpretation of data. TI (Toshiyuki Ikeda) measured the platelet indices. YO measured the platelet indices. KS (Koichi Sohmiya) have been involved in drafting the manuscript or revising it critically for important intellectual content. MH have been involved in drafting the manuscript or revising it critically for important intellectual content. NI directed the study. All authors read and approved the final manuscript.

Acknowledgements

We are highly appreciative of Chieko Ohta, Yumiko Ohgami, and Megumi Hashimoto for their excellent technical assistance.

Author details

¹Department of Cardiology, Osaka Medical College, Takatsuki-shi Daigaku-machi 2-7, Osaka 569-8686, Japan. ²Department of Central Clinical Laboratory, Osaka Medical College, Osaka, Japan.

Received: 10 February 2015 Accepted: 1 June 2015

Published online: 16 June 2015

References

- Marczewski MM, Postula M, Kosior D. Novel antiplatelet agents in the prevention of cardiovascular complications-focus on ticagrelor. *Vasc Health Risk Manag.* 2010;6:419–29.
- Ueno M, Kodali M, Tello-Montoliu A, Angiolillo DJ. Role of platelets and antiplatelet therapy in cardiovascular disease. *J Atheroscler Thromb.* 2011;18(6):431–42.
- Michelson AD. Platelet function testing in cardiovascular diseases. *Circulation.* 2004;110(19):e489–93.
- Slavka G, Perkmann T, Haslacher H, Greisenegger S, Marsik C, Wagner OF, et al. Mean platelet volume may represent a predictive parameter for overall vascular mortality and ischemic heart disease. *Arterioscler Thromb Vasc Biol.* 2011;31(5):1215–8.
- Jakubowski JA, Thompson CB, Vaillancourt R, Valeri CR, Deykin D. Arachidonic acid metabolism by platelets of differing size. *Br J Haematol.* 1983;53(3):503–11.
- Giles H, Smith RE, Martin JF. Platelet glycoprotein IIb-IIIa and size are increased in acute myocardial infarction. *Eur J Clin Invest.* 1994;24(1):69–72.
- Park Y, Schoene N, Harris W. Mean platelet volume as an indicator of platelet activation: methodological issues. *Platelets.* 2002;13(5–6):301–6.
- Burr ML, Holliday RM, Fehily AM, Whitehead PJ. Haematological prognostic indices after myocardial infarction: evidence from the diet and reinfarction trial (DART). *Eur Heart J.* 1992;13(2):166–70.
- Endler G, Klimesch A, Sunder-Plassmann H, Schillinger M, Exner M, Mannhalter C, et al. Mean platelet volume is an independent risk factor for myocardial infarction but not for coronary artery disease. *Br J Haematol.* 2002;117(2):399–404.
- Taglieri N, Saia F, Rapezzi C, Marzocchi C, Bacchi Reggiani ML, Palmerini T, et al. Prognostic significance of mean platelet volume on admission in an unselected cohort of patients with non ST-segment elevation acute coronary syndrome. *Thromb Haemost.* 2011;106(1):132–40.
- Sansanayudh N, Anothaisintawee T, Muntham D, McEvoy M, Attia J, AmmarinThakkinian. Mean platelet volume and coronary artery disease: a systematic review and meta-analysis. *Int J Cardiol.* 2014;175(3):433–40.
- Jurcut R, Arsenescu I, Puscaiu T, Uscatescu V, Jurcut C, Apetrei E, et al. Is interleukin-18 correlated with endothelial dysfunction and platelet activation in patients with unstable angina? *Rom J Intern Med.* 2005;43(3–4):199–209.
- Khandekar MM, Khurana AS, Deshmukh SD, Kakrani AL, Katdare AD, Inamdar AK. Platelet volume indices in patients with coronary artery disease and acute myocardial infarction: an Indian scenario. *J Clin Pathol.* 2006;59(2):146–9.
- Khode V, Sindhur J, Kanbur D, Ruikar K, Nallulwar S. Mean platelet volume and other platelet volume indices in patients with stable coronary artery disease and acute myocardial infarction: A case control study. *J Cardiovasc Dis Res.* 2012;3(4):272–5.
- Assiri AS, Jamil AM, Mahfouz AA, Mahmoud ZS, Ghallab M. Diagnostic importance of platelet parameters in patients with acute coronary syndrome admitted to a tertiary care hospital in southwest region. *Saudi Arabia J Saudi Heart Assoc.* 2012;24(1):17–21.
- Varol E, Uysal BA, Ozaydin M. Platelet indices in patients with pulmonary arterial hypertension. *Clin Appl Thromb Hemost.* 2011;17(6):E171–4.
- Icli A, Aksoy F, Dogan A, Arslan A, Akcay S, Yucler H, et al. Increased mean platelet volume in hypertrophic cardiomyopathy. *Angiology.* 2014;65(5):420–4.
- Malinin AI, O'Connor CM, Dzhnashvili AI, Sane DC, Serebruanu VL. Platelet activation in patients with congestive heart failure: do we have enough evidence to consider clopidogrel? *Am Heart J.* 2003;145(3):397–403.
- Kandis H, Ozhan H, Ordu S, Erden I, Caglar O, Basar C, et al. The prognostic value of mean platelet volume in decompensated heart failure. *Emerg Med J.* 2011;28(7):575–8.
- Chung I, Choudhury A, Lip GY. Platelet activation in acute, decompensated congestive heart failure. *Thromb Res.* 2007;120(5):709–13.
- Acikgoz N, Ermis N, Yagmur J, Cansel M, Atas H, Pekdemir H, et al. The evaluation of mean platelet volume levels in patients with idiopathic and ischemic cardiomyopathy: an observational study. *Anadolu Kardiyol Derg.* 2011;11(7):595–9.
- Scuteri A, Cacciafesta M, de Propriis AM, di Bernardo MG, Recchi D, Celli V, et al. Platelet size and left ventricular hypertrophy in hypertensive patients over 50 years of age. *Eur J Clin Invest.* 1995;25(11):874–6.
- Elbasan Z, Gur M, Sahin DY, Tanboga IH, Cayli M. Mean platelet volume and abnormal left ventricle geometric patterns in patients with untreated essential hypertension. *Platelets.* 2013;24(7):521–7.

24. Matsuo S, Imai E, Horio M, Yasuda Y, Tomita K, Nitta K, et al. Revised equations for estimated GFR from serum creatinine in Japan. *Am J Kidney Dis.* 2009;53(6):982–92.
25. Shibata K, Fujita S, Morita H, Okamoto Y, Sohmiya K, Hoshiga M, et al. Association between circulating fibroblast growth factor 23, alpha-Klotho, and the left ventricular ejection fraction and left ventricular mass in cardiology inpatients. *PLoS One.* 2013;8(9), e73184.
26. Devereux RB, Reichek N. Echocardiographic determination of left ventricular mass in man. Anatomic validation of the method *Circulation.* 1977;55(4):613–8.
27. Hashimoto J, Watabe D, Hatanaka R, Hanasawa T, Metoki H, Asayama K, et al. Enhanced radial late systolic pressure augmentation in hypertensive patients with left ventricular hypertrophy. *Am J Hypertens.* 2006;19(1):27–32.
28. Okamoto Y, Fujita SI, Morita H, Kizawa S, Ito T, Sakane K, et al. Association between circulating FGF23, alpha-Klotho, and left ventricular diastolic dysfunction among patients with preserved ejection fraction. *Heart Vessels.* 2014. doi:10.1007/s00380-014-0581-9.
29. Colkesen Y, Coskun I, Muderrisoglu H. The effect of aspirin on mean platelet volume in patients with paroxysmal atrial fibrillation. *Platelets.* 2013;24(4):263–6.
30. Shah B, Valdes V, Nardi MA, Hu L, Schrem E, Berger JS. Mean platelet volume reproducibility and association with platelet activity and anti-platelet therapy. *Platelets.* 2014;25(3):188–92.
31. Higaki T, Kurisu S, Watanabe N, Ikenaga H, Shimonaga T, Iwasaki T, et al. Influence of dual antiplatelet therapy on mean platelet volume in patients with coronary artery disease undergoing percutaneous coronary intervention. *Heart Vessels.* 2014. doi:10.1007/s00380-014-0599-z.
32. De Luca G, Secco GG, Iorio S, Verdoia M, Bellomo G, Marino P. Short-term effects of aspirin and clopidogrel on mean platelet volume among patients with acute coronary syndromes. A single-center prospective study. *Blood Coagul Fibrinolysis.* 2012;23(8):756–9.
33. Asher E, Fefer P, Shechter M, Beigel R, Varon D, Shenkman B, et al. Increased mean platelet volume is associated with non-responsiveness to clopidogrel. *Thromb Haemost.* 2014;112(1):137–41.
34. Yang A, Pizzulli L, Luderitz B. Mean platelet volume as marker of restenosis after percutaneous transluminal coronary angioplasty in patients with stable and unstable angina pectoris. *Thromb Res.* 2006;117(4):371–7.
35. Arik OZ, Ozkan B, Kutlu R, Karal H, Sahin DY, Kaypakli O, et al. Relationship between platelet indices and international normalized ratio in patients with non-valvular atrial fibrillation. *Platelets.* 2014;25(5):311–6.
36. Colkesen Y, Acil T, Abayli B, Yigit F, Katircibasi T, Kocum T, et al. Mean platelet volume is elevated during paroxysmal atrial fibrillation: a marker of increased platelet activation? *Blood Coagul Fibrinolysis.* 2008;19(5):411–4.
37. Turgut O, Zorlu A, Kilicli F, Cinar Z, Yucel H, Tandogan I, et al. Atrial fibrillation is associated with increased mean platelet volume in patients with type 2 diabetes mellitus. *Platelets.* 2013;24(6):493–7.
38. Yarlioglu M, Kaya MG, Ardic I, Dogdu O, Kasapkara HA, Gunturk E, et al. Relationship between mean platelet volume levels and subclinical target organ damage in newly diagnosed hypertensive patients. *Blood Press.* 2011;20(2):92–7.
39. Bulur S, Onder HI, Aslantas Y, Ekinozu I, Kilic AC, Yalcin S, et al. Relation between indices of end-organ damage and mean platelet volume in hypertensive patients. *Blood Coagul Fibrinolysis.* 2012;23(5):367–9.
40. Yavuzkir MF, Kurtoglu E, Yilmaz M, Korkmaz H, Cakmak T, Dogdu O, et al. Relationship between mean platelet volume elevation and left ventricular mass index in hypertensive patients. *J Int Med Res.* 2014;42(3):781–7.
41. Pusuroglu H, Cakmak HA, Erturk M, Akgul O, Akkaya E, Tosu AR, et al. Assessment of the relation between mean platelet volume, non-dipping blood pressure pattern, and left ventricular mass index in sustained hypertension. *Med Sci Monit.* 2014;20:2020–6.
42. Yazici HU, Poyraz F, Sen N, Tavil Y, Turfan M, Tulmac M, et al. Relationship between mean platelet volume and left ventricular systolic function in patients with metabolic syndrome and ST-elevation myocardial infarction. *Clin Invest Med.* 2011;34(6), E330.
43. Kosiuk J, Breithardt O, Bode K, Kornej J, Arya A, Gaspar T, et al. Left ventricular diastolic dysfunction and thromboembolic risk in atrial fibrillation: diastolic dysfunction and thromboembolic risk in AF. *Int J Cardiol.* 2013;168(1):547–8.
44. Lee SH, Choi S, Chung WJ, Byun YS, Ryu SK, Pyun WB, et al. Tissue Doppler index, E/E', and ischemic stroke in patients with atrial fibrillation and preserved left ventricular ejection fraction. *J Neurol Sci.* 2008;271(1–2):148–52.
45. Chung I, Choudhury A, Patel J, Lip GY. Soluble CD40L, platelet surface CD40L and total platelet CD40L in congestive heart failure: relationship to platelet volume, mass and granularity. *J Intern Med.* 2008;263(3):313–21.
46. Vagdatli E, Gounari E, Lazaridou E, Katsibourlia E, Tsikopoulou F, Labrianou I. Platelet distribution width: a simple, practical and specific marker of activation of coagulation. *Hippokratia.* 2010;14(1):28–32.

Submit your next manuscript to BioMed Central and take full advantage of:

- Convenient online submission
- Thorough peer review
- No space constraints or color figure charges
- Immediate publication on acceptance
- Inclusion in PubMed, CAS, Scopus and Google Scholar
- Research which is freely available for redistribution

Submit your manuscript at
www.biomedcentral.com/submit

