


Research Article

Influence of Ultrapulsed CO₂ Laser, before Application of Different Types of Fluoride, on the Increase of Microhardness of Enamel *In Vitro*

Marcia Regina Cabral Oliveira,¹ Pedro Henrique Cabral Oliveira,¹
Luiz Henrique Cabral Oliveira,² Ravana Angelini Sfalcin,¹ Renato Araujo Prates,¹
Ricardo Scarparo Navarro,³ Paulo Francisco Cesar,⁴ Alessandro Melo Deana ,¹
Maria Cristina Chavantes,⁵ Sandra Kalil Bussadori ,^{1,6}
and Anna Carolina Ratto Tempestini Horliana ¹

¹Postgraduate Program in Biophotonics Applied to Health Sciences, Universidade Nove de Julho, UNINOVE, São Paulo, Brazil

²Undergraduate Student, Postgraduate Program in Biophotonics Applied to Health Sciences, Universidade Nove de Julho, UNINOVE, São Paulo, Brazil

³Postgraduate Program in Bioengineering and Biomedical Engineering, Universidade Brazil, São Paulo, Brazil

⁴Department of Biomaterials and Oral Biology, University of São Paulo, São Paulo, Brazil

⁵Postgraduate Program in Medicine and Biophotonics, Universidade Nove de Julho, UNINOVE, São Paulo, Brazil

⁶Postgraduate Program in Rehabilitation Sciences, Universidade Nove de Julho, UNINOVE, São Paulo, Brazil

Correspondence should be addressed to Anna Carolina Ratto Tempestini Horliana; annacrth@gmail.com

Received 18 May 2018; Accepted 10 July 2018; Published 6 August 2018

Academic Editor: Nick Silikas

Copyright © 2018 Marcia Regina Cabral Oliveira et al. This is an open access article distributed under the Creative Commons Attribution License, which permits unrestricted use, distribution, and reproduction in any medium, provided the original work is properly cited.

Objective. To evaluate the influence of ultrapulsed CO₂ laser in combination with commercial fluoride products in order to verify the increase of microhardness of artificial enamel caries lesions. **Materials and Methods.** Bovine enamel specimens were prepared, and artificial enamel caries lesions were created. Teeth were randomly divided into 5 groups (n=10): treated with laser (L), laser + neutral fluoride gel 2% (LNF), laser + acidulated phosphate fluoride gel 1.23% (LAFG), laser + acidulated fluoride mousse 1.23% (LAFM), and laser + fluoride varnish 5% (LFV). Microhardness was evaluated at baseline, after caries induction, after CO₂ laser irradiation + fluoride treatment in the 1st week, and after fluoride treatment at 3rd and 5th week. **Results.** There was a decrease in microhardness in all groups after artificial enamel caries lesion formation; no increase in microhardness was found in the first and third weeks in all groups (p > 0.05). In the fifth week, an increase in microhardness occurred in all groups (p < 0.05). **Conclusion.** Although CO₂ laser irradiation in combination with different commercial fluoride products was capable of increasing microhardness on enamel caries lesions in bovine tooth enamel it is necessary to confirm these results by testing the isolated effect of fluoride on enamel surface microhardness. Also, although microhardness was higher in the fluoride varnish group than in the other groups in the fifth week it is not possible to discard the best effect of fluoride varnish treatment on absence of artifacts that may occur with the other fluoride treatments. **Clinical Relevance.** In order to prove that CO₂ laser may contribute to an increase in microhardness when applied to enamel lesions in combination with different commercial fluoride products it is necessary to conduct additional studies. Also, higher microhardness of fluoride varnish group should be carefully considered.

1. Introduction

Dental caries is still a public health problem, and untreated caries lesions are the most prevalent chronic oral problem,

as observed in the Global Burden of Disease study in 2010 [1, 2]. Approximately 35% of the world population is affected by this condition, which exerts a considerable influence on quality of life and has implications with regard

to systemic health [3–5]. Early enamel caries lesions are formed during alternating periods of demineralization and remineralization [6]. The net gain or loss in minerals from the enamel structure determines whether tooth decay will advance, stabilize, or regress. Minimally invasive approaches have been the treatment of choice in order to manage caries lesions with thoroughgoing preservation of tooth structures [7], i.e., the application of different types of fluoride agents, in different concentrations. It has been reported that long-term exposure to fluoride with levels of 0.095–0.190 ppm fluoride in the saliva may be sufficient to arrest caries progression [8]. Fluoride acts to prevent caries by being a biocide [9, 10] and by reducing the solubility of enamel and dentin through its incorporation into tooth tissue to form fluoroapatite [11–13]. Also, fluoride acts to remineralize damaged tooth tissue following demineralization [11, 13, 14]. It has been demonstrated that a reaction occurs between the soluble fluoride found in commercial products and the tooth's minerals thus resulting in the precipitation of CaF_2 mineral-like deposits in the biofilm [15]. This loosely bound fluoride layer formed on both the enamel surface and in plaque during the demineralization process in clinical situations can stabilize the mineral apatite and remineralize the enamel, making it substantially more resistant to demineralization [16–18]. However, successful treatment requires the early detection of caries, adequate hygiene technique, and the use of fluoride agents [19, 20]. Studies have demonstrated the effectiveness of fluoride in the prevention of caries, but data on the most appropriate vehicles for all situations have been studied until now [5, 17, 21–23]. Researchers have been applying different minimally invasive treatments to treat existing, noncavitated, early caries lesions (e.g., white spots) using different technologies [24–29].

The use of fractionated CO_2 laser before and after the application of fluoride was investigated [16]. When it was used before fluoride therapy, the enamel caries lesions were remineralized. Some authors [29] evaluated the use of acidulated phosphate fluoride combined with CO_2 laser ($\lambda = 10,600$ nm) with 11.3 or 20 J/cm^2 and 0.4 or 0.7 W and concluded that the irradiation significantly enhanced CaF_2 uptake by demineralizing the enamel and inhibiting lesion progression. In view of these promising results it is necessary to test whether the association of laser with other commercial forms of fluoride would also increase enamel microhardness [30, 31].

Thus, the aim of this study was to evaluate if the association of ultrapulsed CO_2 laser with commercial fluoride products increases microhardness of artificial enamel caries lesions.

2. Material and Methods

Brazilian law 11/797/08 published on October 8th, 2008 (article 3, paragraph 3), defines animal experimentation as procedures conducted with live animals. Since all tooth samples were obtained *postmortem* from discards of animals raised for commercial slaughter, this study did not require the approval of an animal research ethics committee.

2.1. Preparation of Enamel Specimens and Artificial Caries-Like Lesion Formation. Fifty extracted bovine teeth were cleaned and kept in 0.1% thymol solution at 4°C. The vestibular surface of the teeth was abraded with silicon carbide sandpaper in water (grits 400, 600, and 1200) (Buehler) and polished with a felt disc and diamond pastes with granulations of 0.5, 1, 2, and 3 μm . Enamel blocks (7 X 4 X 4 mm) were cut from the prepared vestibular surface, using double-sided diamond discs and a low-speed drill with cooling (Isomet 1000, Buehler, Lake Buff, IL, USA). Blocks were covered with two layers of acid-resistant nail varnish (Colorama®, São Paulo, Brazil), except for the flattened exposed enamel surface [27, 31]. The specimens were kept in a stove at 37°C and underwent the first round of pH cycling for 30 days for demineralization (2.5 ml solution/ mm^2 of enamel surface) [32, 33]. The fifty prepared specimens were randomly distributed into five groups (n= 10) (Figure 1).

2.2. Laser Irradiation. After artificial enamel caries lesion formation, CO_2 laser irradiation was applied to the enamel blocks, one time only, before the application of different types of fluoride treatments.

2.3. Laser Parameters. Ultrapulsed CO_2 laser ($\lambda = 10,600$ nm) (Ultralase 30, South, Atl, USA) was used in pulsed mode, with an average radiant power of 48 mW, peak power of 1W, aperture diameter of 0.20 cm, power density at aperture of 1.20 W/cm^2 , beam spot size at target of 0.04 cm^2 , irradiance at target of 1.20 W/cm^2 , duty cycle of 5%, duty exposure duration of 0.715 seconds, exposure duration of 14.3 s, pulse duration of 0.005 s, pulse-off time of 0.099 s, pulse repetition frequency of 9.6Hz, number of pulses at irradiated area 176, radiant exposure of 0.858 J/cm^2 , radiant energy of 34 mJ, energy per pulse of 5 mJ, irradiated area of 0.04 cm^2 , number and frequency of treatments being one. With a reduced duty cycle (5%) it was possible to deliver a large amount of radiant energy with the laser CO_2 off for a long interval.

2.4. Fluoride Treatment and pH Cycling. After CO_2 laser irradiation, experimental groups G2-LNF, G3-LAFG, G4-LAFM, and G5-LFV were submitted to topical fluoride applications once a week, following the manufacturers' recommendations for application (Table 1), for a total period of 5 weeks. During the topical fluoride treatments, both aforementioned experimental groups and the control group (G1-L, without fluoride) were submitted to the same pH cycling treatment as applied before laser irradiation. However, the periods of immersion in DE-RE solutions were changed. The pH cycling model was as follows: Teeth were put for six hours in DE solution, so they were rinsed with distilled water and dried with absorbent paper. Thus, they were put for 18 hours in the RE solution at 37°C with agitation (MacLab, Jacaré, SP) [23, 31, 33]. All excess fluoride product was immediately removed with absorbent paper and the specimens were immediately placed back into pH cycling.

In the varnish group, we applied it. Then, we waited for 1 min for solvent evaporation and then the excess was

TABLE 1: Information of the materials.

Commercial name	Composition	Fluoride Concentration	Manufacturer	Time of contact: product/enamel
Fluoride Gel®	Acidulated sodium fluoride	1.23%	Sultan Topex, DFL	1 min, after which it was removed with absorbent paper
Flugel®	NaF	2%	Sultan Topex, DFL	1 min, after which it was removed with absorbent paper
Fluor Care®	Acidulated sodium fluoride	1.23%	FGM	1 min, after which it was removed with absorbent paper
Duraphat®	NaF	5%	Colgate	1 min, after which it was removed with absorbent paper
Deminerallizing solution	H ₂ O, KOH, CH ₃ COOH, C ₂ H ₃ NaO ₂ , H ₃ PO ₄ , Ca pH 3.5 to 4	0.030 ppm	Fórmula & Ação Pharmacy	pH cycling
Reminerallizing solution (artificial saliva)	H ₂ O, HCL, KOH, CaCl ₂ , (HOCH ₂) ₃ CNH ₂ , Ca, P, Tris buffer pH 7	0.050 ppm	Fórmula & Ação Pharmacy	pH cycling

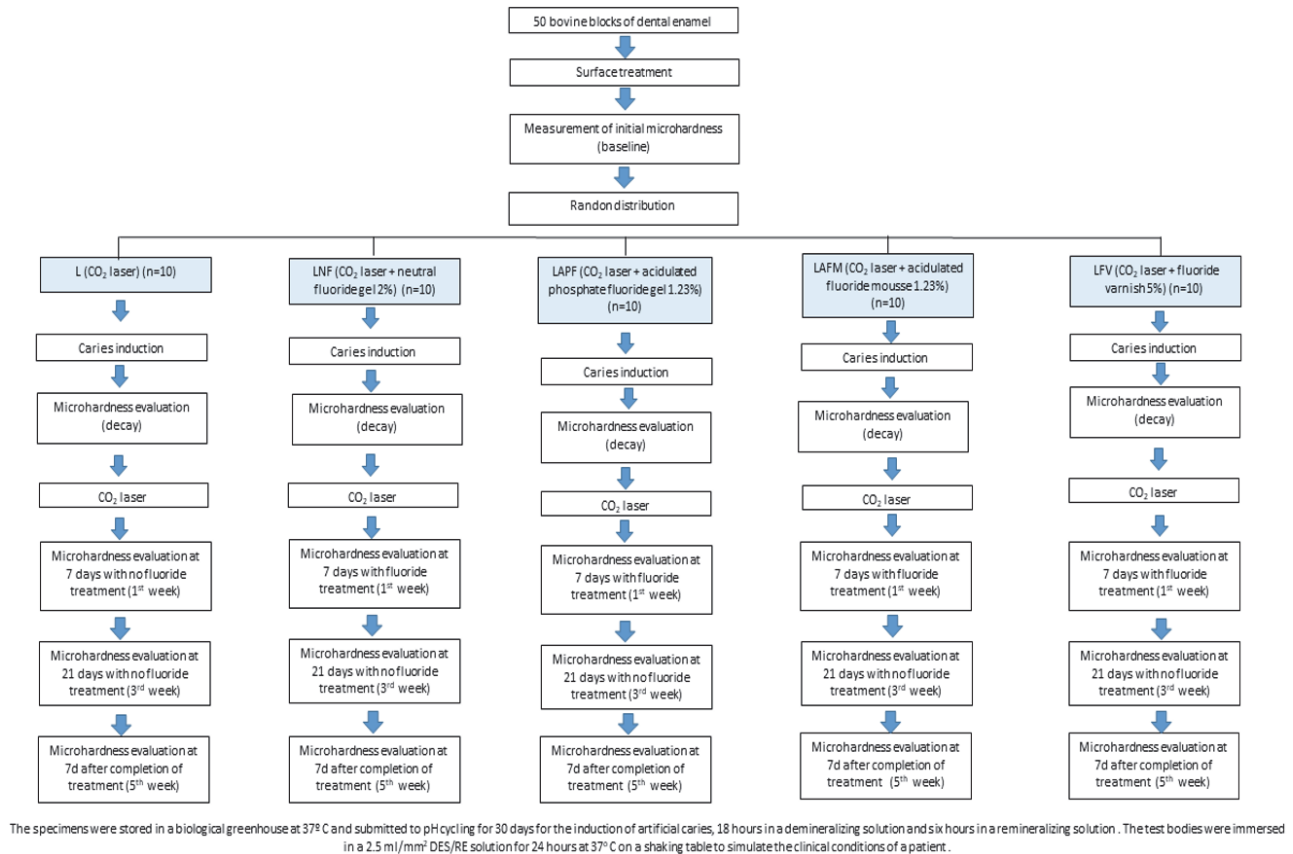


FIGURE 1: Flow chart.

removed with the absorbent paper. Immediately the specimen was placed in RE solution, and the tubes were kept under stirring throughout the assay, to simulate clinical conditions. After creating the early enamel caries lesion, samples were immersed for 18 hours in the remineralizing solution and for 6 hours in the demineralizing solution to simulate an oral environment. This second pH cycling was carried out along with the fluoride treatments.

2.5. Surface Microhardness Evaluation. Surface microhardness was determined by a Knoop indenter with a load of 50 g for 20 seconds using HMV Micro Hardness Tester (Shimadzu, Japan). Five indentations were made at a distance of 100 μm from each other and the mean was used for the analysis [33]. Surface microhardness was determined on five occasions: (1) on sound enamel (baseline); (2) immediately after enamel caries lesion formation; (3) seven days (1 week) after the beginning of the treatments; (4) after 21 days (3 weeks); and (5) 35 days (1 weeks) after the completion of treatment (the total duration of treatment was 4 weeks). Only one operator performed all the microhardness assays. The samples treatments were also performed by only one operator who was blinded to the results of the microhardness assays.

2.6. Statistical Analysis. Mean and standard error of the mean (SEM) values were calculated for all groups and

compared among the readings taken at baseline, after enamel caries lesion formation, and one week and three weeks after enamel caries lesion formation. Microhardness was also evaluated one week after the fourth-week treatment (after the completion of treatment). The groups were compared at each evaluation time (intergroup analysis) as well as individually over time (intragroup analysis). The Shapiro-Wilks test demonstrated that the data exhibited normal distribution. Two-way repeated measure analysis of variance (ANOVA) was used to make the comparisons, followed by Bonferroni's post hoc test. The level of significance was $\alpha = 0.05$. All statistical analyses were performed using the Statistical Package for Social Sciences (SPSS).

3. Results

Intergroup (treatment analysis; $p = 0.0230$, two-way repeated measures ANOVA) and intragroup (time analysis; $p < 0.0001$, two-way repeated measures ANOVA) differences were found in the microhardness analysis (Figure 2). Although the intercept presented statistically significant differences (times*treatment; $p < 0.0001$, two-way repeated measures ANOVA) this is likely due to the decrease in hardness (after the induction of decay) and its subsequent increase (due to treatment); thus such differences are expected. In the intragroup analysis, a significant reduction in microhardness

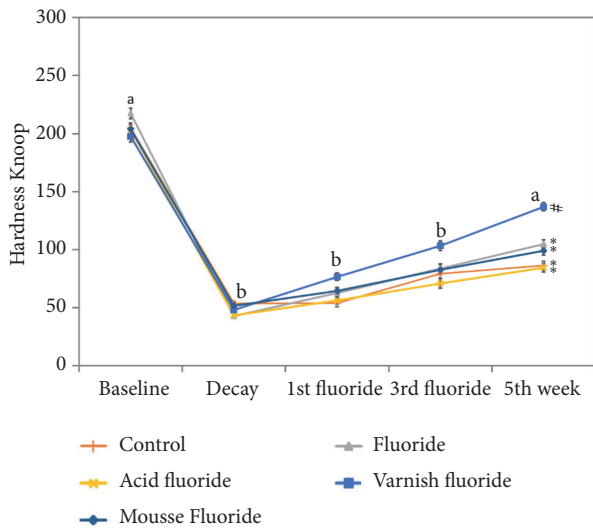


FIGURE 2: Evaluation of microhardness of bovine tooth enamel before and after enamel caries lesion induction and after the first, third, and fifth weeks. Different letters mean statistically significant different times. Different symbols mean statistically significant different treatments. Mean values (n=10) of surface microhardness of the tooth enamel according moment of analysis and treatment. Distinct letters (a, b) indicate statistical difference among the times of analysis. Different symbols (# *) indicate statistical difference among the treatments. Vertical bars indicate standard error of the mean (Bonferroni test, $p < 0.05$).

was found after the induction of artificial enamel caries lesion (decay) in all groups ($p < 0.05$). From the first to the third week, no increase in microhardness values occurred in any of the groups ($p > 0.05$) in comparison to the decay period. In the fifth week, however, an increase in microhardness occurred in all groups in comparison to the decay period. In the intergroup comparisons, no differences were found between the baseline, decay, one-week, or three-week evaluations ($p > 0.05$). At the five-week evaluation, however, the fluoride varnish group exhibited significantly higher microhardness ($p < 0.05$) than the other groups.

4. Discussion

Products with a high fluoride concentration are indicated for individuals with high caries activity as well as special needs patients [14, 17, 18]. Fluoride gels, mousses, and varnishes have been employed in Pediatric, Preventive, and General Dentistry, but questions remain regarding application time and the capacity of such products to affect the remineralization of early caries lesions in dental enamel. In the present study, the increase in surface microhardness of enamel was followed for a four-week period, which is the treatment time established for early enamel caries lesions. An additional evaluation (5th week) was performed to verify microhardness of the enamel surface one week after completion of treatment. The surface microhardness values for the 5th week did not differ from those found at the baseline. This was because, while there was an increase in the surface microhardness

during the 5 weeks, the samples were immersed in the demineralizing solution for 6 hours and in the remineralizing solution for 18 hours, for 5 weeks. Thus, there was a large period of immersion in the remineralizing solution which contains calcium and phosphate in the composition. Then, when associated with fluoride applications, it is expected that an increase in mineral presence on the enamel surface in all groups occurs, also in control group.

A previous study showed the importance of a Ca prerinse prior to a F rinse as this process forms substantial amounts of CaF₂-like deposits [15]. Studies have demonstrated greater efficiency in the remineralization process when acidulated phosphate fluoride gel is used [14, 16, 17, 34]. On the other hand, fluoride gel should be used with caution when treating patients in special needs groups and preschool children due to the risk of ingestion and gastric harm stemming from the toxicity [35]. Few studies propose the use of CO₂ laser for the treatment of early enamel caries lesion due to the heterogeneity, porosity, and fragility of this tissue. As carious tissue is more porous and has different energy absorption characteristics, an inappropriate dose of energy could exert a negative influence on treatment [26]. The most likely hypothesis for the inhibiting effects of laser on caries is the fusion of hydroxyapatite crystals [26, 36]. It has been demonstrated that lasers alter the composition of water and carbonate of the enamel's superficial structure, thus reducing the acid reactivity of the mineral [37, 38]. The combination of CO₂ laser with fluoride treatments could have a synergistic effect and be more efficient than either fluoride or CO₂ laser irradiation alone [38]. Further studies should investigate Raman spectrum or Scanning Electron Microscopy (SEM).

In order to further confirm our hypothesis, it is necessary to confirm the results of this study by testing the isolated effect of fluoride on enamel surface microhardness. The greater hardness achieved with the varnish may be explained by the high concentration of fluoride and considerable substantivity of this product. Also, it is important to note that a limitation of this study is the use of only microhardness to evaluate the effect of the treatments as there exists the impact of artifacts provoked on the dental surface by acidic and highly concentrated fluoride products. As previously discussed [39, 40] loosely bound fluoride products are formed in enamel by partial dissolution of a layer of enamel and reprecipitation of fluoride salts. The loosely bound products formed on dental surfaces are subsequently dissolved in the saliva and this dissolution provokes changes in the dental surface. Thus, microhardness may not be the best choice to evaluate the effect of the acidulated sodium fluoride group (one of the groups used in this study, LAFG). Thus, the better performance of F-varnish is not a surprise, because it is a neutral product and most of the fluoride in it is insoluble by the organic solvent (ethanol) used to dissolve the varnish matrix. It is not possible to discard the best effect of F-varnish treatment on absence of artifacts that may occur with the other fluoride treatments.

Also, of note, the L group (control) presents levels of microhardness similar to that achieved in other groups with laser irradiation combined with fluoride products (LNF, LAFG, LAFM, and LFV groups). Further studies must be

conducted to evaluate the microhardness of enamel caries lesions after CO₂ laser application alone, without the following immersion of the specimens into a remineralizing solution, in order to confirm the findings of our study. Also, these results should be analyzed with caution because of the remineralizing potential of the DES/RE solution used in this study. Further studies are necessary to test the temperature achieved with ultrapulsed irradiation. This parameter was performed with considerable spacing to minimize the deposition of accumulated energy, which may have prevented an increase in the temperature of the pulp [17, 32].

Although CO₂ laser irradiation in combination with different commercial fluoride products was capable of increasing microhardness on enamel caries lesions in bovine tooth enamel it is still necessary to confirm these results by testing the isolated effect of fluoride on enamel surface microhardness. Also, although microhardness was higher in the fluoride varnish group than in the other groups in the fifth week, it is not possible to discard the best effect of fluoride varnish treatment in the absence of artifacts that may have occurred with the other fluoride treatments. Further studies should investigate Raman spectrum or Scanning Electron Microscopy (SEM) of fluoride groups alone or associated with fluoride to understand the mechanism of action of this interaction. In conclusion, all the tested groups in this study showed increased microhardness of artificial enamel caries lesions.

Data Availability

The data used to support the findings of this study are included within the article.

Ethical Approval

Brazilian law 11/797/08 published on October 8th, 2008 (article 3, paragraph 3), defines animal experimentation as procedures conducted with live animals. Since all tooth samples were obtained *postmortem* from discards of animals raised for commercial slaughter, this study did not require the approval of an animal research ethics committee.

Disclosure

This work did not receive any funding.

Conflicts of Interest

The authors of this article have no conflicts of interest to declare.

Authors' Contributions

All authors have contributed significantly, and they all agree on the manuscript.

Acknowledgments

The authors would like to thank Dr. Alvaro Pereira de Oliveira who generously loaned us the Ultralase 30 ultrashort pulsed CO₂ laser (South Inc., USA)

Supplementary Materials

Figure 1: electron micrograph of normal bovine dental enamel magnified 300 and 10000 x. Figure 2: electron micrograph of bovine dental enamel following induction of artificial caries magnified 300 and 10000 x. (*Supplementary Materials*)

References

- [1] W. Marcenes, N. J. Kassebaum, E. Bernabé et al., "Global burden of oral conditions in 1990–2010: a systematic analysis," *Journal of Dental Research*, vol. 92, no. 7, pp. 592–597, 2013.
- [2] American Academy of Pediatrics, "Preventive Oral Health Intervention for Pediatricians," *Pediatrics*, vol. 122, no. 6, pp. 1387–1394, 2008.
- [3] P. E. Petersen, "World Health Organization global policy for improvement of oral health—World Health Assembly 2007," *International Dental Journal*, vol. 58, no. 3, pp. 115–121, 2008.
- [4] D. Richards, "Fluoride gel effective at reducing caries in children," *Evidence-based dentistry*, vol. 16, no. 4, pp. 108–109, 2015.
- [5] J. A. Cury and L. M. A. Tenuta, "Enamel remineralization: controlling the caries disease or treating early caries lesions?" *Brazilian Oral Research*, vol. 23, no. 1, pp. 23–30, 2009.
- [6] L. M. Silverstone, "Remineralization phenomena," *Caries Research*, vol. 11, pp. 59–84, 1977.
- [7] S. E. Langhorst, J. N. R. O'Donnell, and D. Skrtic, "In vitro remineralization of enamel by polymeric amorphous calcium phosphate composite: quantitative microradiographic study," *Dental Materials*, vol. 25, no. 7, pp. 884–891, 2009.
- [8] J. D. B. Featherstone and D. T. Zero, "Laboratory and human studies to elucidate the mechanics of action of fluoride-containing dentifrices," in *Clinical and Biological Aspects of Dentifrices*, G. Embery and G. Rølla, Eds., pp. 41–50, Oxford University Press, New York, NY, USA, 1992.
- [9] I. R. Hamilton, "Biochemical effects of fluoride on oral bacteria," *Journal of Dental Research*, vol. 69, pp. 660–667, 1990.
- [10] L. Seppä, A. Korhonen, and A. Nuutinen, "Inhibitory effect on *S. mutans* by fluoride-treated conventional and resin-reinforced glass ionomer cements," *European Journal of Oral Sciences*, vol. 103, no. 3, pp. 182–185, 1995.
- [11] J. M. Ten Cate, "In vitro studies on the effects of fluoride on demineralization and remineralization," *Journal of Dental Research*, vol. 69, pp. 614–619, 1990.
- [12] J. D. B. Featherstone, R. Glana, M. Shariati, and C. P. Shields, "Dependence of in vitro demineralization of apatite and remineralization of dental enamel on fluoride concentration," *Journal of Dental Research*, vol. 69, pp. 620–625, 1990.
- [13] D. S. Brauer, N. Karpukhina, R. V. Law, and R. G. Hill, "Structure of fluoride-containing bioactive glasses," *Journal of Materials Chemistry*, vol. 19, no. 31, pp. 5629–5636, 2009.
- [14] A. Wiegand, W. Buchalla, and T. Attin, "Review on fluoride-releasing restorative materials—fluoride release and uptake characteristics, antibacterial activity and influence on caries formation," *Dental Materials*, vol. 23, no. 3, pp. 343–362, 2007.

- [15] G. L. Vogel, L. M. A. Tenuta, G. E. Schumacher, and L. C. Chow, "No calcium-fluoride-like deposits detected in plaque shortly after a sodium fluoride mouthrinse," *Caries Research*, vol. 44, no. 2, pp. 108–115, 2010.
- [16] M. Petzold, "The influence of different fluoride compounds and treatment conditions on dental enamel: a descriptive in vitro study of the CaF₂ precipitation and microstructure," *Caries Research*, vol. 35, no. 1, pp. 45–51, 2001.
- [17] V. C. Marinho, J. P. Higgins, A. Sheiham, and S. Logan, "Combinations of topical fluoride (toothpastes, mouthrinses, gels, varnishes) versus single topical fluoride for preventing dental caries in children and adolescents," *Cochrane Database of Systematic Reviews (Online)*, no. 1, p. CD002781, 2004.
- [18] L. M. A. Tenuta, C. B. Zamataro, A. A. Del Bel Cury, C. P. M. Tabchoury, and J. A. Cury, "Mechanism of fluoride dentifrice effect on enamel demineralization," *Caries Research*, vol. 43, no. 4, pp. 278–285, 2009.
- [19] J. D. Featherstone, "The caries balance: contributing factors and early detection," *Journal of the California Dental Association*, vol. 31, no. 2, pp. 129–133, 2003.
- [20] J. D. Featherstone, "Caries prevention and reversal based on the caries balance," *Pediatric Dental Journal*, vol. 28, no. 2, pp. 128–132, 2006.
- [21] O. Fejerskov, J. A. Cury, L. M. A. Tenuta, and V. Marinho, "Fluorides in caries control," in *Dental caries: The Disease and Its Clinical Management*, O. Fejerskov and E. Kidd, Eds., pp. 245–276, Oxford: Wiley Blackwell, 3rd edition, 2015.
- [22] P. E. Benson, N. Parkin, F. Dyer, D. T. Millett, S. Furness, and P. Germain, "Fluorides for the prevention of early tooth decay (demineralised white lesions) during fixed brace treatment," *Cochrane Database of Systematic Reviews*, 2013.
- [23] J. D. B. Featherstone, M. M. O'Reilly, M. Shariati, and S. Brugler, "Enhancement of remineralization in vitro and in vivo," in *Factors Relating to Demineralization and Remineralization of the Teeth*, S. A. Leach, Ed., pp. 23–24, Oxford: IRL Press, 1986.
- [24] A. L. L. Klein, L. K. A. Rodrigues, C. P. Eduardo, M. N. dos Santos, and J. A. Cury, "Caries inhibition around composite restorations by pulsed carbon dioxide laser application," *European Journal of Oral Sciences*, vol. 113, no. 3, pp. 239–244, 2005.
- [25] F. L. Mialhe, A. C. Pereira, M. D. C. Meneghim, E. P. D. S. Tagliaferro, and V. Pardi, "Occlusal tooth surface treatment plans and their possible effects on oral health care costs," *Oral Health & Preventive Dentistry*, vol. 7, no. 3, pp. 211–216, 2009.
- [26] M. Poosti, F. Ahrari, H. Moosavi, and H. Najjaran, "The effect of fractional CO₂ laser irradiation on remineralization of enamel white spot lesions," *Lasers in Medical Science*, vol. 29, no. 4, pp. 1349–1355, 2014.
- [27] M. C. Jordão, G. M. Forti, R. S. Navarro, P. M. Freitas, H. M. Honório, and D. Rios, "CO₂ laser and/or fluoride enamel treatment against in situ/ex vivo erosive challenge," *Journal of Applied Oral Science*, vol. 24, no. 3, pp. 223–228, 2016.
- [28] Y. Wang, L. Mei, L. Gong et al., "Remineralization of early enamel caries lesions using different bioactive elements containing toothpastes: an in vitro study," *Technology and Health Care*, vol. 24, no. 5, pp. 701–711, 2016.
- [29] B. R. Zancopé, L. P. Rodrigues, T. M. Parisotto, C. Steiner-Oliveira, L. K. Rodrigues, and M. Nobre-dos-Santos, "CO₂ laser irradiation enhances CaF₂ formation and inhibits lesion progression on demineralized dental enamel—in vitro study," *Lasers in Medical Science*, vol. 31, no. 3, pp. 539–547, 2016.
- [30] Z. Wang, W. Zheng, S. C.-Y. Hsu, and Z. Huang, "Optical diagnosis and characterization of dental caries with polarization-resolved hyperspectral stimulated Raman scattering microscopy," *Biomedical Optics Express*, vol. 7, no. 4, pp. 1284–1293, 2016.
- [31] A. E. D. M. Vieira, A. C. B. Delbem, K. T. Sasaki, E. Rodrigues, J. A. Cury, and R. F. Cunha, "Fluoride dose response in pH-cycling models using bovine enamel," *Caries Research*, vol. 39, no. 6, pp. 514–520, 2005.
- [32] J. A. K. M. Buskes, J. Christoffersen, and J. Arends, "Lesion formation and lesion remineralization in enamel under constant composition conditions: a new technique with applications," *Caries Research*, vol. 19, no. 6, pp. 490–496, 1985.
- [33] J. D. Featherstone, J. M. ten Cate, M. Shariati, and J. Arends, "Comparison of artificial caries-like lesions by quantitative microradiography and microhardness profiles," *Caries Research*, vol. 17, no. 5, pp. 385–391, 1983.
- [34] C. Bruun and H. Givskov, "Formation of CaF₂ on sound enamel and in caries-like enamel lesions after different forms of fluoride applications in vitro," *Caries Research*, vol. 25, pp. 96–100, 1991.
- [35] A. Maguire, "ADA clinical recommendations on topical fluoride for caries prevention," *Evidence-based dentistry*, vol. 15, no. 2, pp. 38–39, 2014.
- [36] A. M. Corrêa-Afonso, L. Bachmann, C. G. De Almeida, S. A. M. Corona, and M. C. Borsatto, "FTIR and SEM analysis of CO₂ laser irradiated human enamel," *Archives of Oral Biolog*, vol. 57, no. 9, pp. 1153–1158, 2012.
- [37] B. O. Fowler and S. Kuroda, "Changes in heated and in laser-irradiated human tooth enamel and their probable effects on solubility," *Calcified Tissue International*, vol. 38, no. 4, pp. 197–208, 1986.
- [38] L. K. A. Rodrigues, M. N. Santos, D. Pereira, A. V. Assaf, and V. Pardi, "Carbon dioxide laser in dental caries prevention," *Journal of Dentistry*, vol. 32, no. 7, pp. 531–540, 2004.
- [39] A. F. P. Leme, C. P. M. Tabchoury, D. T. Zero, and J. A. Cury, "Effect of fluoridated dentifrice and acidulated phosphate fluoride application on early artificial carious lesions," *American Journal of Dentistry*, vol. 16, no. 2, pp. 91–95, 2003.
- [40] L. C. Maia, I. P. R. De Souza, and J. A. Cury, "Effect of a combination of fluoride dentifrice and varnish on enamel surface rehardening and fluoride uptake in vitro," *European Journal of Oral Sciences*, vol. 111, no. 1, pp. 68–72, 2003.