

RESEARCH

Open Access

# $\beta$ -site amyloid precursor protein-cleaving enzyme 1 (BACE1) inhibitor treatment induces A $\beta$ 5-X peptides through alternative amyloid precursor protein cleavage

Erik Portelius<sup>1\*</sup>, Robert A Dean<sup>2</sup>, Ulf Andreasson<sup>1</sup>, Niklas Mattsson<sup>1,3</sup>, Anni Westerlund<sup>1</sup>, Maria Olsson<sup>1</sup>, Ronald Bradley Demattos<sup>2</sup>, Margaret M Racke<sup>2</sup>, Henrik Zetterberg<sup>1,4</sup>, Patrick C May<sup>2</sup> and Kaj Blennow<sup>1</sup>

## Abstract

**Introduction:** The  $\beta$ -secretase enzyme,  $\beta$ -site amyloid precursor protein-cleaving enzyme 1 (BACE1), cleaves amyloid precursor protein (APP) in the first step in  $\beta$ -amyloid (A $\beta$ ) peptide production. Thus, BACE1 is a key target for candidate disease-modifying treatment of Alzheimer's disease. In a previous exploratory A $\beta$  biomarker study, we found that BACE1 inhibitor treatment resulted in decreased levels of A $\beta$ 1-34 together with increased A $\beta$ 5-40, suggesting that these A $\beta$  species may be novel pharmacodynamic biomarkers in clinical trials. We have now examined whether the same holds true in humans.

**Methods:** In an investigator-blind, placebo-controlled and randomized study, healthy subjects ( $n = 18$ ) were randomly assigned to receive a single dose of 30 mg of LY2811376 ( $n = 6$ ), 90 mg of LY2811376 ( $n = 6$ ), or placebo ( $n = 6$ ). We used hybrid immunoaffinity-mass spectrometry (HI-MS) and enzyme-linked immunosorbent assays to monitor a variety of A $\beta$  peptides.

**Results:** Here, we demonstrate dose-dependent changes in cerebrospinal fluid (CSF) A $\beta$ 1-34, A $\beta$ 5-40 and A $\beta$ 5-X after treatment with the BACE1-inhibitor LY2811376. A $\beta$ 5-40 and A $\beta$ 5-X increased dose-dependently, as reflected by two independent methods, while A $\beta$ 1-34 dose-dependently decreased.

**Conclusion:** Using HI-MS for the first time in a study where subjects have been treated with a BACE inhibitor, we confirm that CSF A $\beta$ 1-34 may be useful in clinical trials on BACE1 inhibitors to monitor target engagement. Since it is less hydrophobic than longer A $\beta$  species, it is less susceptible to preanalytical confounding factors and may thus be a more stable marker. By independent measurement techniques, we also show that BACE1 inhibition in humans is associated with APP-processing into N-terminally truncated A $\beta$  peptides via a BACE1-independent pathway.

**Trial registration:** ClinicalTrials.gov NCT00838084. Registered: First received: January 23, 2009, Last updated: July 14, 2009, Last verified: July 2009.

\* Correspondence: erik.portelius@neuro.gu.se

<sup>1</sup>Clinical Neurochemistry Laboratory, Institute of Neuroscience and Physiology, Department of Psychiatry and Neurochemistry, The Sahlgrenska Academy, University of Gothenburg, S-431 80 Mölndal, Sweden  
Full list of author information is available at the end of the article

## Introduction

Alzheimer's disease (AD) is a slowly progressing brain disease manifesting several neuropathological characteristics including accumulation of extracellular plaques, mainly composed of amyloid- $\beta$  ( $A\beta$ ) peptides of various lengths [1,2].  $A\beta$  is derived via two-step enzymatic cleavage of the transmembrane amyloid precursor protein (APP) catalyzed by the  $\beta$ -site APP-cleaving enzyme 1 (BACE1,  $\beta$ -secretase) [3] and  $\gamma$ -secretase [4]. BACE1 cleaves APP at the first amino acid of the  $A\beta$  domain and is crucial for the production of  $A\beta$  peptides starting at position 1, including  $A\beta_{1-42}$ . Thus, BACE1 is a key target for disease-modifying AD treatments, since one focus for such therapies is to minimize  $A\beta$  production [5].

To evaluate the biochemical effects of novel BACE1 inhibitor candidates, biomarkers that reflect target engagement are needed [6]. Analyzing a wide range of  $A\beta$  species in cerebrospinal fluid (CSF) gives useful information on APP metabolism in humans [7,8]. In a recent preclinical study, we showed that APP-transfected cells and dogs treated with several different BACE1-inhibitors expressed decreased levels of  $A\beta_{1-34}$  and concurrently increased the levels of  $A\beta_{5-40}$  in cell media and CSF, suggesting that these peptides may be pharmacodynamic markers of BACE1 inhibition in the central nervous system (CNS) [9]. Inhibition of  $\gamma$ -secretase, another AD drug candidate approach, increased APP processing via the  $\alpha$ -secretase-mediated pathway [10-13] and decreased CSF levels of  $A\beta_{1-34}$  in humans, even at dosages when  $A\beta_{1-42}$  was unchanged, further supporting the use of novel CSF biomarkers to monitor target engagement of anti- $A\beta$  drugs [14-16].

Here, for the first time with a peptidomics approach, we have demonstrated changes in CSF levels of  $A\beta_{1-34}$  and  $A\beta_{5-40}$  in humans treated with the BACE1 inhibitor LY2811376 (Eli Lilly and Company, Indianapolis, IN, USA). The translation of these findings from preclinical models to man indicates that CSF  $A\beta_{1-34}$  and  $A\beta_{5-40}$  have potential utility as markers of BACE1 inhibition in clinical research. Furthermore, the results strongly suggest that  $A\beta$  peptides starting at amino acid 5 are produced through a non BACE1-dependent pathway in humans.

## Methods

### Subjects

The study, conducted at PAREXEL International Early Phase Los Angeles, CA, USA, from February to June 2009, was previously reported in detail [17]. In brief, the study was a subject- and investigator-blind, placebo-controlled, randomized, single-dose design. The California Institutional Review Board approved the study. All subjects provided written informed consent before the beginning of the study. The trial was conducted in compliance with the Declaration of Helsinki and International Conference on Harmonisation/Good Clinical Practice guidelines. Eighteen

healthy subjects (21 to 49 years old, seventeen men and one woman) participated in the study and were randomly assigned to receive a single dose of 30 mg of LY2811376 ( $n=6$ ), 90 mg of LY2811376 ( $n=6$ ) or placebo ( $n=6$ ). An indwelling lumbar catheter was placed four hours before administration of the study drug and subjects remained supine for the duration of the CSF sample collection period. CSF samples were collected prior to and at regular intervals over 36 hours after drug administration and analyzed by immunoprecipitation in combination with mass spectrometry (MS). All CSF samples were collected in polypropylene tubes and stored at  $-80^{\circ}\text{C}$ .

### Hybrid immunoaffinity-mass spectrometry

Immunoaffinity capture of  $A\beta$  species was combined with matrix-assisted laser desorption/ionization time-of-flight (MALDI-TOF) MS for analyzing a variety of  $A\beta$  peptides in a single analysis as described in detail elsewhere [18]. In brief, the anti- $A\beta$  antibodies 6E10 and 4G8 were separately coupled to magnetic beads. After washing of the beads, the 4G8 and 6E10 coated beads were used in combination for immunoprecipitation. After elution of the immune-purified  $A\beta$  peptides, analyte detection was performed on an UltraFLEXtreme MALDI TOF/TOF instrument (Bruker Daltonics, Bremen, Germany). For relative quantification of  $A\beta$  peptides, an in-house developed MATLAB (Mathworks Inc. Natick, MA, USA) program was used. For each peak the sum of the intensities for the three strongest isotopic signals was calculated and normalized against the sum for all the  $A\beta$  peaks in the spectrum, followed by averaging of results for separately determined duplicate samples. In the 30-mg group, one sample, six hours post treatment, was omitted from further analysis due to blood in the CSF.

### Cell experiments

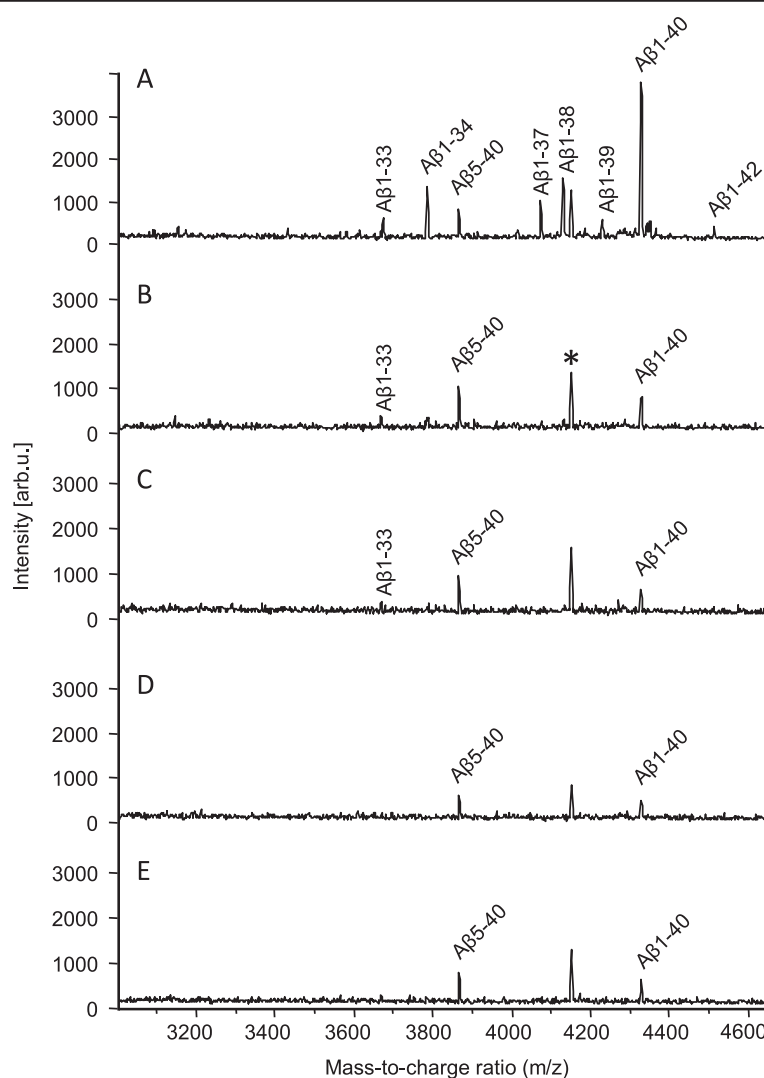
SH-SY5Y cells [19] obtained from the European Collection of Cell Cultures (ECACC 94030304), stably expressing human APP, were maintained in Dulbecco's modified Eagle's medium F-12 (Invitrogen, Carlsbad, CA, USA) supplemented with 10% fetal bovine serum, L-glutamine and antibiotics. SH-SY5Y cells were treated with the BACE1-inhibitor  $\beta$ -secretase inhibitor IV (Calbiochem, Merck, compound 3, Darmstadt, Germany) [20], LY2811376, or dimethyl sulfoxide (DMSO) and incubated for 20 hours.

### Enzyme-linked immunosorbent assay

For quantification of  $A\beta_{5-40}$  and  $A\beta_{5-x}$  using ELISA, microtiter plates were coated with 10  $\mu\text{g}/\text{mL}$  2G3 [21] (anti- $A\beta_{x-40}$ ; epitope including valine at position 40, Eli Lilly & Company, Indianapolis, IN, USA) or 266 [22] (anti- $A\beta_{1-x}$ ; epitope 13-28, Eli Lilly & Company) overnight at  $4^{\circ}\text{C}$ . After blocking plates in 2% bovine serum albumin (BSA), dilutions of  $A\beta_{5-40}$  standards (Anaspec)

and CSF samples were incubated on plates in 1% BSA, 0.55 M guanidine-HCL, 5 mM Tris in phosphate buffered saline (PBS) with complete ethylenediaminetetraacetic acid (EDTA)-free protease inhibitor (Roche, Mannheim, Germany) overnight at 4°C. After washing in PBS-0.05% Tween 20, biotinylated 5H5 (anti-A $\beta_{5-x}$ ; epitope including arginine at position 5, Eli Lilly & Company) was used to detect the truncated A $\beta$  beginning at the arginine at position 5. The 5H5 monoclonal antibody was developed in mice following standard methods and the specificity for the truncated A $\beta_{5-x}$  was investigated by acid urea gel (a technique that separates A $\beta$  peptides by mass and charge) and ELISA methods. Acid urea gel separation of synthetic A $\beta$  peptides followed by Western blotting with 5H5 revealed complete selectivity for the truncated A $\beta_{5-42}$  as

compared to full-length A $\beta_{1-42}$ . Additionally, acid urea gel/5H5 Western blotting analysis of human cortical tissue from multiple Alzheimer's subjects resulted in a single identifiable band that co-migrated at the same position as the synthetic A $\beta_{5-42}$  standard. Note, the migration of the A $\beta$  peptides in this gel system completely separates the A $\beta_{5-42}$  from all other A $\beta$  peptides (truncated or full-length). ELISA analyses to investigate the 5H5 epitope selectivity demonstrated a 20,000-fold selectivity for the A $\beta_{5-x}$  epitope versus the full-length peptide (A $\beta_{1-x}$ ). Following additional washes in PBS-0.05% Tween 20, plates were incubated with streptavidin-horseradish peroxidase (HRP) (Biosource, San Diego, CA, USA) and subsequently, 3,3',5,5'-Tetramethylbenzidine (TMB) (Sigma, St. Louis, MO, USA) color development was monitored at 650 nm in a spectrophotometer.



**Figure 1** Mass spectra displaying the effect of treatment on multiple A $\beta$  species in cell media. (A) DMSO (vehicle), (B) 1.25  $\mu$ M of the BACE1-inhibitor LY2811376, (C) 2.5  $\mu$ M of the BACE1-inhibitor LY2811376, (D) 1.25  $\mu$ M of the BACE-inhibitor BACE IV and (E) 2.5  $\mu$ M of the BACE-inhibitor BACE IV in media from SH-SY5Y cells. \*Represent unidentified peaks. A $\beta$ ,  $\beta$ -amyloid; BACE,  $\beta$ -site APP-cleaving enzyme; DMSO, dimethyl sulfoxide.

Quantification of CSF sAPP $\alpha$  and sAPP $\beta$  was conducted as described previously and the results from these analyses have already published [17].

### Statistical analysis

The time series for each treatment were analyzed using Friedman's test (SPSS v13, Chicago, IL, USA). A dose-dependent effect was considered significant if  $P < 0.05$  and if the  $P$ -value decreased with increasing dose. Association analyses were performed by Spearman's rank correlation and the correlation coefficient is presented by spearman's rho (rs).

### Results

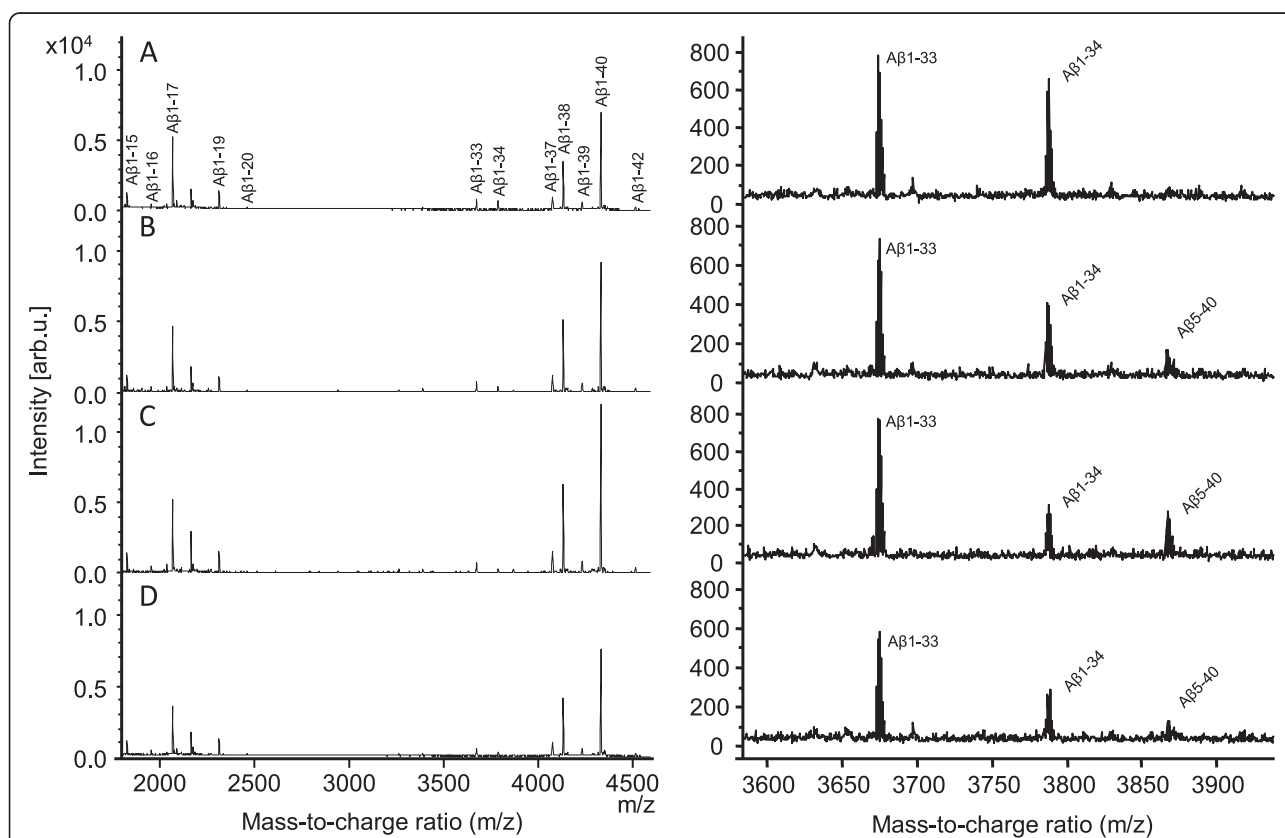
#### LY2811376 induces a characteristic A $\beta$ peptide pattern in a human-derived neuroblastoma cell line

As expected, SH-SY5Y cells treated with the BACE1-inhibitor LY2811376 or BACE IV secreted less A $\beta$ 1-40 and A $\beta$ 1-42 to the cell medium while the relative levels of A $\beta$ 5-40 (relative to the other A $\beta$  peptides detected) increased, as compared to vehicle-treated cells (Figure 1). These data clearly demonstrate that LY2811376 inhibits BACE1 activity and that the generation of A $\beta$ 5-40 is BACE independent.

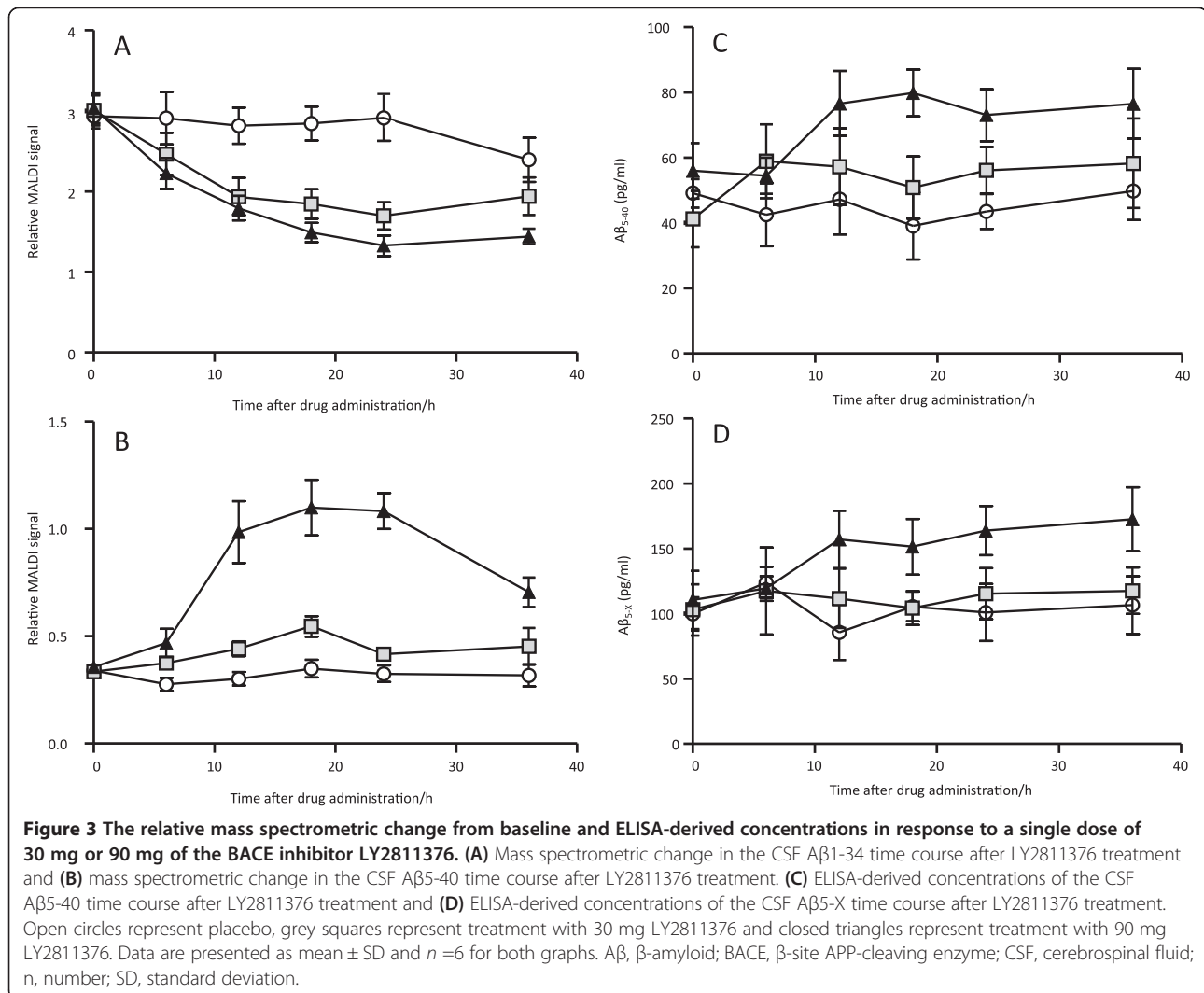
#### The BACE1 inhibitor LY2811376 causes a relative reduction in CSF A $\beta$ 1-34 and an increase in CSF A $\beta$ 5-40 in humans as reflected by mass spectrometry

To evaluate if the BACE1-mediated changes described in exploratory A $\beta$  biomarker studies were translatable to humans, the CSF mass spectrometric A $\beta$  peptide pattern from untreated subjects was compared to the pattern from subjects treated with different concentrations of the BACE1-inhibitor LY2811376. Representative CSF A $\beta$  peptide mass spectra from a subject before treatment and 36 hours after drug administration are shown in Figure 2A-D. Although barely detectable versus background before treatment, BACE1 inhibition increased the mass spectrometric signal for A $\beta$ 5-40 while the signal corresponding to A $\beta$ 1-34 decreased. In total, 13 A $\beta$  species ranging from A $\beta$ 1-15 up to A $\beta$ 1-42 were reproducibly detected.

The BACE1 inhibitor LY2811376 dose-dependently reduced A $\beta$ 1-34 relative to baseline with a nadir of 42% in the 30-mg group ( $P = 0.002$ ) and 57% in the 90-mg group ( $P < 0.001$ ) respectively, 24 hours after drug administration (Figure 3A). By contrast, LY2811376 dose-dependently increased A $\beta$ 5-40 to a maximum relative to baseline after 18 hours in the 30-mg ( $P = 0.213$ ) and the 90-mg ( $P < 0.001$ ) groups, respectively (Figure 3B). The mass



**Figure 2** Mass spectra displaying multiple A $\beta$  species recovered from human CSF specimens by immunoprecipitation with the anti-A $\beta$  antibodies 6E10 and 4G8. (A) Pre-treatment, (B) 12, (C) 24, and (D) 36 hours post treatment with 90 mg of LY2811376. The right-hand panels are magnified spectra displaying the increase in A $\beta$ 5-40 and decrease in A $\beta$ 1-34 in response to treatment. A $\beta$ ,  $\beta$ -amyloid; CSF, cerebrospinal fluid.



spectrometric signal for Aβ5-40 in the placebo group was below the limit of detection while in the 90-mg treatment group the signal-to-noise ratio was 4 to 5. At 36 hours post-treatment, both Aβ5-40 and Aβ1-34 had started to return towards baseline levels in both treatment groups.

**The BACE1-inhibitor LY2811376 causes an absolute increase in both CSF Aβ5-40 and Aβ5-X in humans as reflected by ELISA**

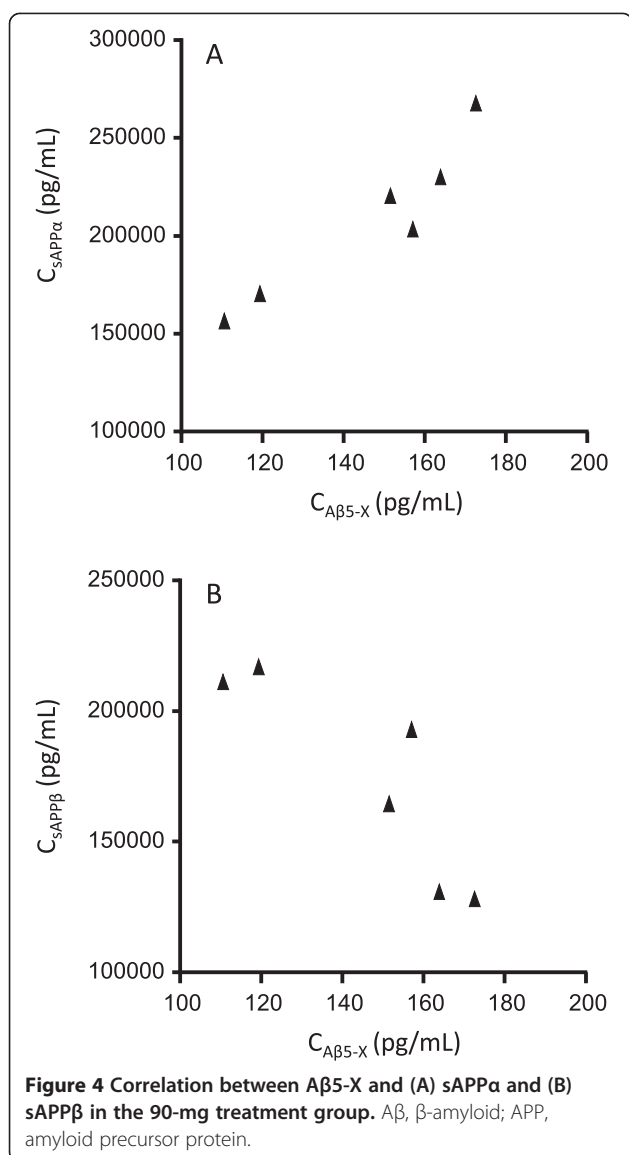
The increase in Aβ5-40 detected by mass spectrometry in response to treatment with the BACE1 inhibitor LY2811376 was further confirmed by a proprietary ELISA. While the placebo concentrations were low, in the range of approximately 100 pg/mL and approximately 50 pg/mL for Aβ5-X and Aβ5-40, respectively, there were clear increases in the LY2811376 high dose (90 mg) group over time for both Aβ5-X and Aβ5-40 (Figure 3C-D) of which the increase in Aβ5-X was statistically significant ( $P = 0.02$ ). The ELISA-determined

concentrations of Aβ5-42 were too low to yield an accurate assessment, which is in agreement with the mass spectrometric data where Aβ5-42 could not be detected in any treatment group.

In the 90-mg dose group, there was a compensatory increase in the concentrations of both Aβ5-X and sAPPα ( $r_s = 0.94$ ,  $P = 0.02$ ) while Aβ5-X was negatively correlated with sAPPβ ( $r_s = -0.89$ ,  $P = 0.03$ ) as presented in Figure 4A,B. There were no correlations between the two peptides starting at amino acid five and sAPPα or sAPPβ in the 30-mg and placebo groups.

**Discussion**

In the present study, we show marked effects on CSF Aβ5-40 (which increases) and Aβ1-34 (which decreases) in response to BACE1 inhibitor treatment. These findings confirm earlier pre-clinical data [9] and suggest that CSF Aβ5-40 and Aβ1-34 may be useful pharmacodynamic markers for assessing the biochemical effects of BACE-1



inhibitors in the CNS in clinical trials. The relatively low concentrations of both Aβ5-40 and Aβ5-X fit previous findings with comparable percentage reductions in Aβ1-40 versus AβX-40 and Aβ1-42 versus AβX-42 in dog CSF following oral administration of LY2811376 [17].

Since the discovery and molecular cloning of BACE1 in 1999 by several independent groups, this enzyme has been a tempting target for pharmacological lowering of cerebral Aβ levels with the intent of treating or preventing AD. To date, there are only a few reports of BACE1 inhibitors that have demonstrated sufficient access to the brain. In a recent paper, oral administration of the non-peptidic BACE1 inhibitor LY2811376 to healthy subjects (same patients as included in the present study) dose-dependently lowered CSF Aβ1-40, Aβ1-42 and sAPPβ levels and dose-dependently increased CSF sAPPα, providing evidence of desirable central pharmacodynamic effects on APP processing [17]. In

another study, a therapeutic antibody that reduces BACE1 activity was used, resulting in lowered CNS Aβ concentrations in preclinical models [23]. Whether this approach can be translated to humans and if other Aβ species besides Aβ1-40 are affected in response to treatment remain to be elucidated.

LY2811376 treatment consistently increased CSF levels of Aβ5-40. The increase of Aβ5-40 in response to BACE1 inhibition clearly suggests that production of Aβ peptides starting at position 5 is formed via a BACE1-independent APP-processing pathway [9]. In agreement with this, it has been suggested that inhibition of BACE1 might be linked to a distinct processing of APP between Phe4 and Arg5 mediated by α-secretase-like proteases [24]. Other enzymes which might cleave in this region of Aβ include α-chymotrypsin, myelin basic protein and protease IV [25]. However, while these enzymes have been shown to cleave Aβ *in vitro*, data from the CNS showing which enzyme that cleaves between Phe4 and Arg5 inhibition of BACE1 is lacking.

Recently, we showed in pre-clinical models that CSF Aβ1-34 is a sensitive marker for BACE1 inhibition [9]. We have previously shown, in two independent clinical trials, that CSF Aβ1-34 is a pharmacodynamic marker of γ-secretase inhibition in humans [14,15] and here we show for the first time that it is also a marker of BACE1 inhibition in humans. It has been shown that the cleavage between Leu34 and Met35 depends on both BACE1 and γ-secretase [26,27]. Thus, Aβ1-34 is an intriguing peptide to follow in clinical trials of BACE1 inhibitors since cleavages at position 1 and position 34 both depend on BACE. It is also possible that Aβ1-34 is more stable than Aβ1-42, as it is less hydrophobic and may thereby be less prone to preanalytical confounding factors.

Aβ5-40 has been found in AD brains [28], but the exact role of this Aβ species in AD pathogenesis (and normal physiology), if any, is unknown and we propose that further studies of biological functions and how the peptide might be relevant to AD pathophysiology are warranted.

We found a positive correlation between sAPPα and Aβ5-X. This correlation may reflect a compensatory increase in APP cleavage at the α-site and between amino acid 4/5, or that there might be more substrate for these enzymes due to inhibition of BACE. We also found a negative correlation between sAPPβ and Aβ5-X, clearly showing that while the amyloidogenic pathway is affected, the (as yet) unknown enzyme generating Aβ5-X cleaves its substrate more.

There are several non-quantitative aspects of HI-MS. The relative quantification using mass spectrometry cannot be interpreted as a direct reflection of an absolute or relative abundance. However, in the present study we have verified the mass spectrometric data showing increased

relative levels of A $\beta$ 5-40 with a proprietary ELISA showing increased concentrations of both A $\beta$ 5-40 and A $\beta$ 5-X in response to inhibition of BACE1. What also should be noted is that the ELISA measures an absolute concentration while MS reports the relative change of A $\beta$ 5-40 relative to all other A $\beta$  peptides detected in the same spectra. A previous study on the same patients as those included in the present study showed a marked decrease in CSF A $\beta$ 1-40 in response to LY2811376 treatment [17]. Due to the relative quantification used in the present study, we were not able to measure the expected decrease. However, by implementing isotopically-labelled A $\beta$  peptides for each peptide of interest, relative small changes in response to treatment should be possible to detect with HI-MS.

## Conclusions

In summary, our results confirm that CSF A $\beta$ 1-34 may be useful in clinical trials on BACE1 inhibitors to monitor target engagement. By independent measurement techniques, we show that BACE1 inhibition in humans is associated with APP-processing into N-terminally truncated A $\beta$  peptides via a BACE1-independent pathway. The data presented also provide evidence for CSF A $\beta$ 1-34 and A $\beta$ 5-40 as translatable pharmacodynamic markers for BACE1-inhibition from cell and animal models to humans.

## Abbreviations

AD: Alzheimer's disease; APP: amyloid precursor protein; A $\beta$ :  $\beta$ -amyloid; BACE 1:  $\beta$ -site APP-cleaving enzyme 1; BSA: bovine serum albumin; CNS: central nervous system; CSF: cerebrospinal fluid; ELISA: enzyme-linked immunosorbent assay; HI-MS: hybrid immunoaffinity-mass spectrometry; MALDI-TOF: matrix-assisted laser desorption/ionization time-of-flight; MS: mass spectrometry; PBS: phosphate-buffered saline; TMB: 3,3',5,5'-Tetramethylbenzidine.

## Competing interests

The clinical trial part of the study was sponsored by Eli Lilly & Company. For the biochemistry part, the sponsors had no role in study design, data collection, data analysis, data interpretation, or writing of the article. EP, UA, NM, AW, MO, HZ and KB declare that they have no competing interests. RAD, RBD, MMR and PCM are employees of Eli Lilly and Company.

## Authors' contributions

EP planned the experimental design, analyzed and interpreted mass spectrometric data and drafted the manuscript. RAD designed and managed implementation of the clinical trial and interpreted data. UA analyzed and interpreted data. NM analyzed and interpreted data. AW acquired mass spectrometric data and interpreted results. MO performed cell studies and interpreted results. RBD designed the ELISA methods and generated the ELISA data and interpreted results. MMR designed the ELISA methods, generated the ELISA data and interpreted results. HZ analyzed and interpreted data. PCM analyzed and interpreted data. KB planned the experimental design, analyzed and interpreted data. All authors revised the manuscript critically for important intellectual content. All authors read and approved the final manuscript.

## Acknowledgements

The authors wish to thank Jayne Talbot for operational support of this research and review of this manuscript.

## Funding

The study was supported by the Lundbeck Foundation, the Swedish Research Council, Swedish State Support for Clinical Research, Stiftelsen Psykiatriska Forskningsfonden, the Wolfson Foundation, Stiftelsen Gamla

Tjänarinnor, Magn. Bergvalls Stiftelse, Gun och Bertil Stohnes Stiftelse, Uppsala Universitets Medicinska Fakultet stiftelse för psykiatrisk och neurologisk forskning, the Swedish Brain Fund, the Alzheimer Foundation, Sweden, the Dementia Association, Sweden, and Eli Lilly and Company.

## Author details

<sup>1</sup>Clinical Neurochemistry Laboratory, Institute of Neuroscience and Physiology, Department of Psychiatry and Neurochemistry, The Sahlgrenska Academy, University of Gothenburg, S-431 80 Mölndal, Sweden. <sup>2</sup>Lilly Research Laboratories, Eli Lilly and Company, Indianapolis, IN 46285, USA.

<sup>3</sup>San Francisco VA Medical Center, Center for Imaging of Neurodegenerative Diseases (CIND), University of California San Francisco, San Francisco, CA, USA. <sup>4</sup>UCL Institute of Neurology, Queen Square, London WC1N 3BG, UK.

Received: 6 May 2014 Accepted: 14 October 2014

Published online: 17 November 2014

## References

1. Glenner GG, Wong CW: Alzheimer's disease: initial report of the purification and characterization of a novel cerebrovascular amyloid protein. *Biochem Biophys Res Commun* 1984, **120**:885–890.
2. Hardy J, Allsop D: Amyloid deposition as the central event in the aetiology of Alzheimer's disease. *Trends Pharmacol Sci* 1991, **12**:383–388.
3. Vassar R, Kandalepas PC: The beta-secretase enzyme BACE1 as a therapeutic target for Alzheimer's disease. *Alzheimers Res Ther* 2011, **3**:20.
4. Steiner H, Fluhrer R, Haass C: Intramembrane proteolysis by gamma-secretase. *J Biol Chem* 2008, **283**:29627–29631.
5. Citron M: Alzheimer's disease: strategies for disease modification. *Nat Rev Drug Discov* 2010, **9**:387–398.
6. Blennow K, Hampel H, Weiner M, Zetterberg H: Cerebrospinal fluid and plasma biomarkers in Alzheimer disease. *Nat Rev Neurol* 2010, **6**:131–144.
7. Portelius E, Andreasson U, Ringman JM, Buerger K, Daborg J, Buchhave P, Hansson O, Harmsen A, Gustavsson MK, Hanse E, Galasko D, Hampel H, Blennow K, Zetterberg H: Distinct cerebrospinal fluid amyloid beta peptide signatures in sporadic and PSEN1 A431E-associated familial Alzheimer's disease. *Mol Neurodegener* 2010, **5**:2.
8. Pannee J, Portelius E, Oppermann M, Atkins A, Hornshaw M, Zegers I, Hojrup P, Minthon L, Hansson O, Zetterberg H, Blennow K, Gobom J: A Selected Reaction Monitoring (SRM)-based method for absolute quantification of Abeta38, Abeta40, and Abeta42 in cerebrospinal fluid of Alzheimer's disease patients and healthy controls. *J Alzheimers Dis* 2013, **33**:1021–1032.
9. Mattsson N, Rajendran L, Zetterberg H, Gustavsson M, Andreasson U, Olsson M, Brinkmalm G, Lundkvist J, Jacobson LH, Perrot L, Neumann U, Borghys H, Mercken M, Dhuyvetter D, Jeppsson F, Blennow K, Portelius E: BACE1 inhibition induces a specific cerebrospinal fluid beta-amyloid pattern that identifies drug effects in the central nervous system. *PLoS One* 2012, **7**:e31084.
10. Portelius E, Price E, Brinkmalm G, Stiteler M, Olsson M, Persson R, Westman-Brinkmalm A, Zetterberg H, Simon AJ, Blennow K: A novel pathway for amyloid precursor protein processing. *Neurobiol Aging* 2011, **32**:1090–1098.
11. Cook JJ, Wildsmith KR, Gilberto DB, Holahan MA, Kinney GG, Mathers PD, Michener MS, Price EA, Shearman MS, Simon AJ, Wang JX, Wu G, Yarasheski KE, Bateman RJ: Acute gamma-secretase inhibition of nonhuman primate CNS shifts amyloid precursor protein (APP) metabolism from amyloid-beta production to alternative APP fragments without amyloid-beta rebound. *J Neurosci* 2010, **30**:6743–6750.
12. Portelius E, Van Broeck B, Andreasson U, Gustavsson MK, Mercken M, Zetterberg H, Borghys H, Blennow K: Acute effect on the Abeta isoform pattern in CSF in response to gamma-secretase modulator and inhibitor treatment in dogs. *J Alzheimers Dis* 2010, **21**:1005–1012.
13. Kuhn PH, Wang H, Dislich B, Colombo A, Zeitschel U, Ellwart JW, Kremmer E, Rossner S, Lichtenthaler SF: ADAM10 is the physiologically relevant, constitutive alpha-secretase of the amyloid precursor protein in primary neurons. *EMBO J* 2010, **29**:3020–3032.
14. Coric V, van Dyck CH, Salloway S, Andreasen N, Brody M, Richter RW, Soininen H, Thein S, Shiovitz T, Pilcher G, Colby S, Rollin L, Dockens R, Pachai C, Portelius E, Andreasson U, Blennow K, Soares H, Albright C, Feldman HH, Berman RM: Safety and tolerability of the gamma-secretase inhibitor avagacestat in a phase 2 study of mild to moderate Alzheimer disease. *Arch Neurol* 2012, **69**:1430–1440.

15. Portelius E, Dean RA, Gustavsson MK, Andreasson U, Zetterberg H, Siemers E, Blennow K: **A novel Abeta isoform pattern in CSF reflects gamma-secretase inhibition in Alzheimer disease.** *Alzheimers Res Ther* 2010, **2**:7.
16. Portelius E, Zetterberg H, Dean RA, Marcil A, Bourgeois P, Nutu M, Andreasson U, Siemers E, Mawuenyega KG, Sigurdson WC, May PC, Paul SM, Holtzman DM, Blennow K, Bateman RJ: **Amyloid-beta(1-15/16) as a marker for gamma-secretase inhibition in Alzheimer's disease.** *J Alzheimers Dis* 2012, **31**:335–341.
17. May PC, Dean RA, Lowe SL, Martenyi F, Sheehan SM, Boggs LN, Monk SA, Mathes BM, Mergott DJ, Watson BM, Stout SL, Timm DE, Smith Labell E, Gonzales CR, Nakano M, Jhee SS, Yen M, Ereshefsky L, Lindstrom TD, Calligaro DO, Cocke PJ, Greg Hall D, Friedrich S, Citron M, Audia JE: **Robust central reduction of amyloid-beta in humans with an orally available, non-peptidic beta-secretase inhibitor.** *J Neurosci* 2011, **31**:16507–16516.
18. Portelius E, Tran AJ, Andreasson U, Persson R, Brinkmalm G, Zetterberg H, Blennow K, Westman-Brinkmalm A: **Characterization of amyloid beta peptides in cerebrospinal fluid by an automated immunoprecipitation procedure followed by mass spectrometry.** *J Proteome Res* 2007, **6**:4433–4439.
19. Biedler JL, Roffler-Tarlov S, Schachner M, Freedman LS: **Multiple neurotransmitter synthesis by human neuroblastoma cell lines and clones.** *Cancer Res* 1978, **38**:3751–3757.
20. Stachel SJ, Coburn CA, Steele TG, Jones KG, Loutzenhiser EF, Gregro AR, Rajapakse HA, Lai MT, Crouthamel MC, Xu M, Tugusheva K, Lineberger JE, Pietrak BL, Espeseth AS, Shi XP, Chen-Dodson E, Holloway MK, Munshi S, Simon AJ, Kuo L, Vacca JP: **Structure-based design of potent and selective cell-permeable inhibitors of human beta-secretase (BACE-1).** *J Med Chem* 2004, **47**:6447–6450.
21. Johnson-Wood K, Lee M, Motter R, Hu K, Gordon G, Barbour R, Khan K, Gordon M, Tan H, Games D, Lieberburg I, Schenk D, Seubert P, McConlogue L: **Amyloid precursor protein processing and A beta42 deposition in a transgenic mouse model of Alzheimer disease.** *Proc Natl Acad Sci U S A* 1997, **94**:1550–1555.
22. Seubert P, Vigo-Pelfrey C, Esch F, Lee M, Dovey H, Davis D, Sinha S, Schlossmacher M, Whaley J, Swindlehurst C, McCormack R, Wolfert R, Selkoe D, Lieberburg I, Schenk D: **Isolation and quantification of soluble Alzheimer's beta-peptide from biological fluids.** *Nature* 1992, **359**:325–327.
23. Atwal JK, Chen Y, Chiu C, Mortensen DL, Meilandt WJ, Liu Y, Heise CE, Hoyte K, Luk W, Lu Y, Peng K, Wu P, Rouge L, Zhang Y, Lazarus RA, Scearce-Levie K, Wang W, Wu Y, Tessier-Lavigne M, Watts RJ: **A therapeutic antibody targeting BACE1 inhibits amyloid-beta production in vivo.** *Sci Transl Med* 2011, **3**:84ra43.
24. Takeda K, Araki W, Akiyama H, Tabira T: **Amino-truncated amyloid beta-peptide (Abeta5-40/42) produced from caspase-cleaved amyloid precursor protein is deposited in Alzheimer's disease brain.** *FASEB J* 2004, **18**:1755–1757.
25. Miners JS, Barua N, Kehoe PG, Gill S, Love S: **Abeta-degrading enzymes: potential for treatment of Alzheimer disease.** *J Neuropathol Exp Neurol* 2011, **70**:944–959.
26. Fluhrer R, Multhaup G, Schlicksupp A, Okochi M, Takeda M, Lammich S, Willem M, Westmeyer G, Bode W, Walter J, Haass C: **Identification of a beta-secretase activity, which truncates amyloid beta-peptide after its presenilin-dependent generation.** *J Biol Chem* 2003, **278**:5531–5538.
27. Shi XP, Tugusheva K, Bruce JE, Lucka A, Wu GX, Chen-Dodson E, Price E, Li Y, Xu M, Huang Q, Sardana MK, Hazuda DJ: **Beta-secretase cleavage at amino acid residue 34 in the amyloid beta peptide is dependent upon gamma-secretase activity.** *J Biol Chem* 2003, **278**:21286–21294.
28. Portelius E, Bogdanovic N, Gustavsson MK, Volkman I, Brinkmalm G, Zetterberg H, Winblad B, Blennow K: **Mass spectrometric characterization of brain amyloid beta isoform signatures in familial and sporadic Alzheimer's disease.** *Acta Neuropathol* 2010, **120**:185–193.

doi:10.1186/s13195-014-0075-0

**Cite this article as:** Portelius et al.:  $\beta$ -site amyloid precursor protein-cleaving enzyme 1 (BACE1) inhibitor treatment induces A $\beta$ 5-X peptides through alternative amyloid precursor protein cleavage. *Alzheimer's Research & Therapy* 2014 **6**:75.

**Submit your next manuscript to BioMed Central and take full advantage of:**

- Convenient online submission
- Thorough peer review
- No space constraints or color figure charges
- Immediate publication on acceptance
- Inclusion in PubMed, CAS, Scopus and Google Scholar
- Research which is freely available for redistribution

Submit your manuscript at  
www.biomedcentral.com/submit

