

CORRECTION

Open Access



Correction to: Guidelines: a structural topic modelling analysis of free-text data from 17,500 UK adults

Liam Wright^{1*}, Elise Paul², Andrew Steptoe² and Daisy Fancourt²

Correction to: BMC Public Health 22, 34 (2022)
<https://doi.org/10.1186/s12889-021-12372-6>

Following publication of the original article [1], the authors identified an error in one of the variables in their code. This has caused:

- An incorrect Figure 2
- An incorrect Figure 5
- Several textual errors in the following sections:
 - Compliance facilitators and respondent characteristics
 - Compliance Barriers and Respondent Characteristics
 - Discussion

These errors do not impact the conclusions/outcome of the article.

The incorrect and correct figures are shown in this correction article as figs 1-4. The text edits are available in supplementary file 1. The original article has been updated with the correct information.

The original article can be found online at <https://doi.org/10.1186/s12889-021-12372-6>.

*Correspondence: liam.wright.17@ucl.ac.uk

¹ Institute of Education, University College London, 55-59 Gordon Square, London WC1H 0NU, UK

Full list of author information is available at the end of the article



© The Author(s) 2022. **Open Access** This article is licensed under a Creative Commons Attribution 4.0 International License, which permits use, sharing, adaptation, distribution and reproduction in any medium or format, as long as you give appropriate credit to the original author(s) and the source, provide a link to the Creative Commons licence, and indicate if changes were made. The images or other third party material in this article are included in the article's Creative Commons licence, unless indicated otherwise in a credit line to the material. If material is not included in the article's Creative Commons licence and your intended use is not permitted by statutory regulation or exceeds the permitted use, you will need to obtain permission directly from the copyright holder. To view a copy of this licence, visit <http://creativecommons.org/licenses/by/4.0/>. The Creative Commons Public Domain Dedication waiver (<http://creativecommons.org/publicdomain/zero/1.0/>) applies to the data made available in this article, unless otherwise stated in a credit line to the data.

Incorrect figure 2 as originally published

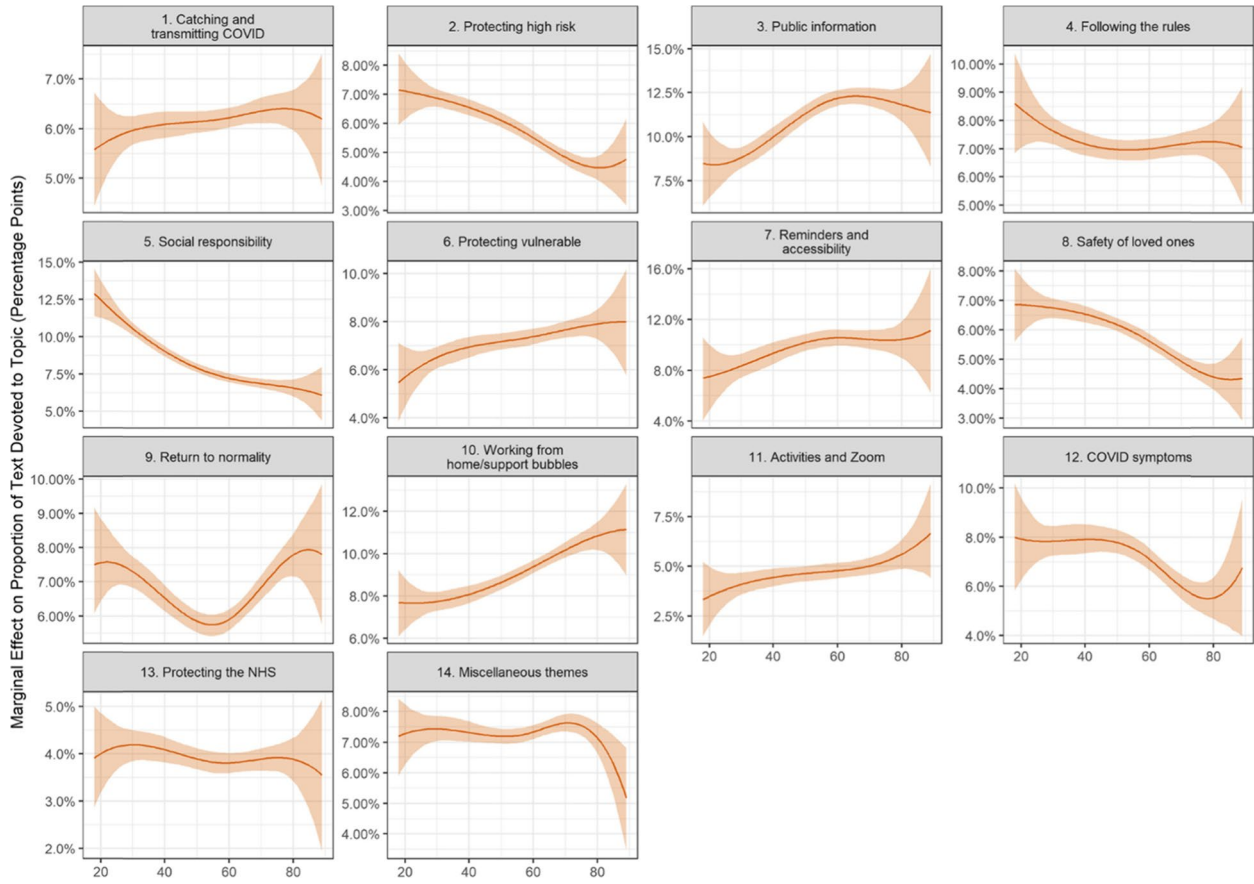
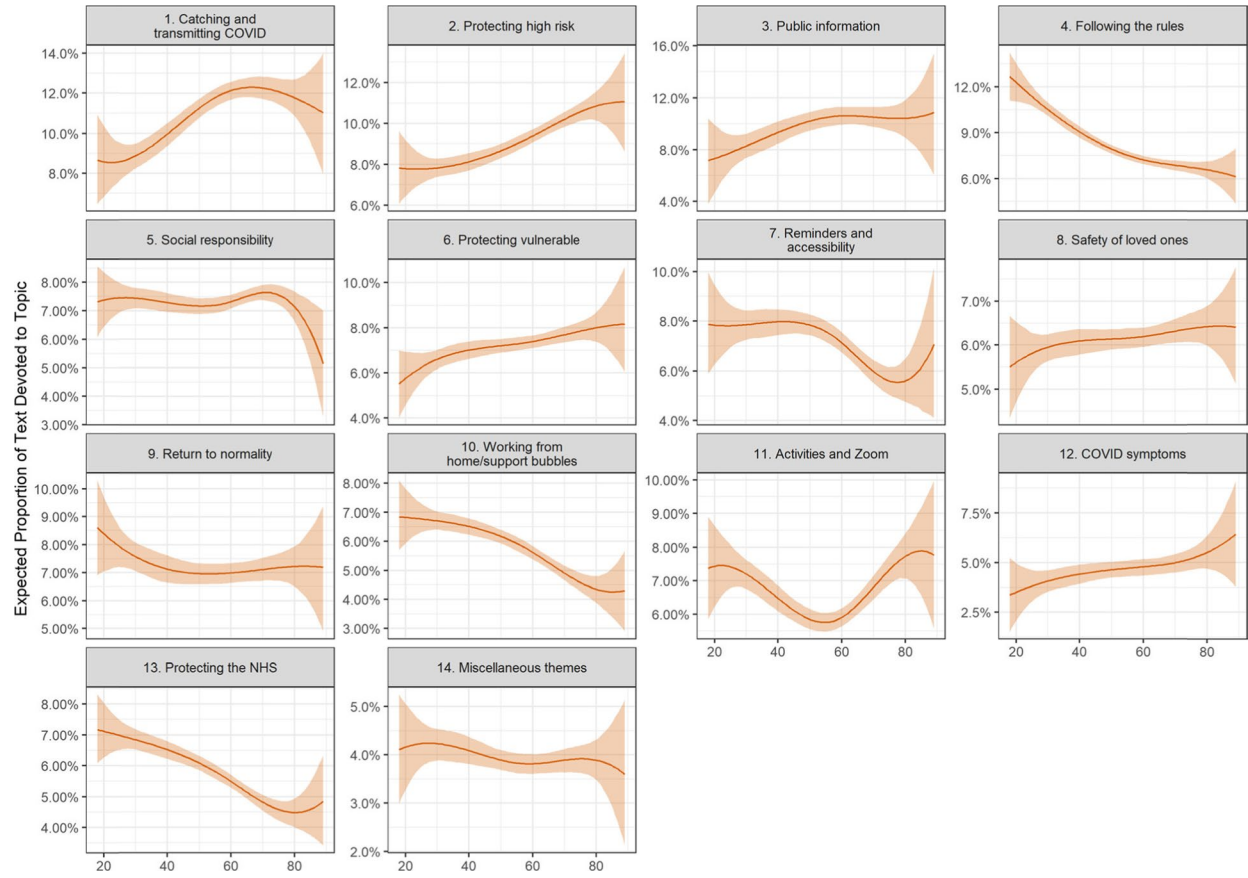


Figure 2 Correct figure 2



Incorrect figure 5 as originally published

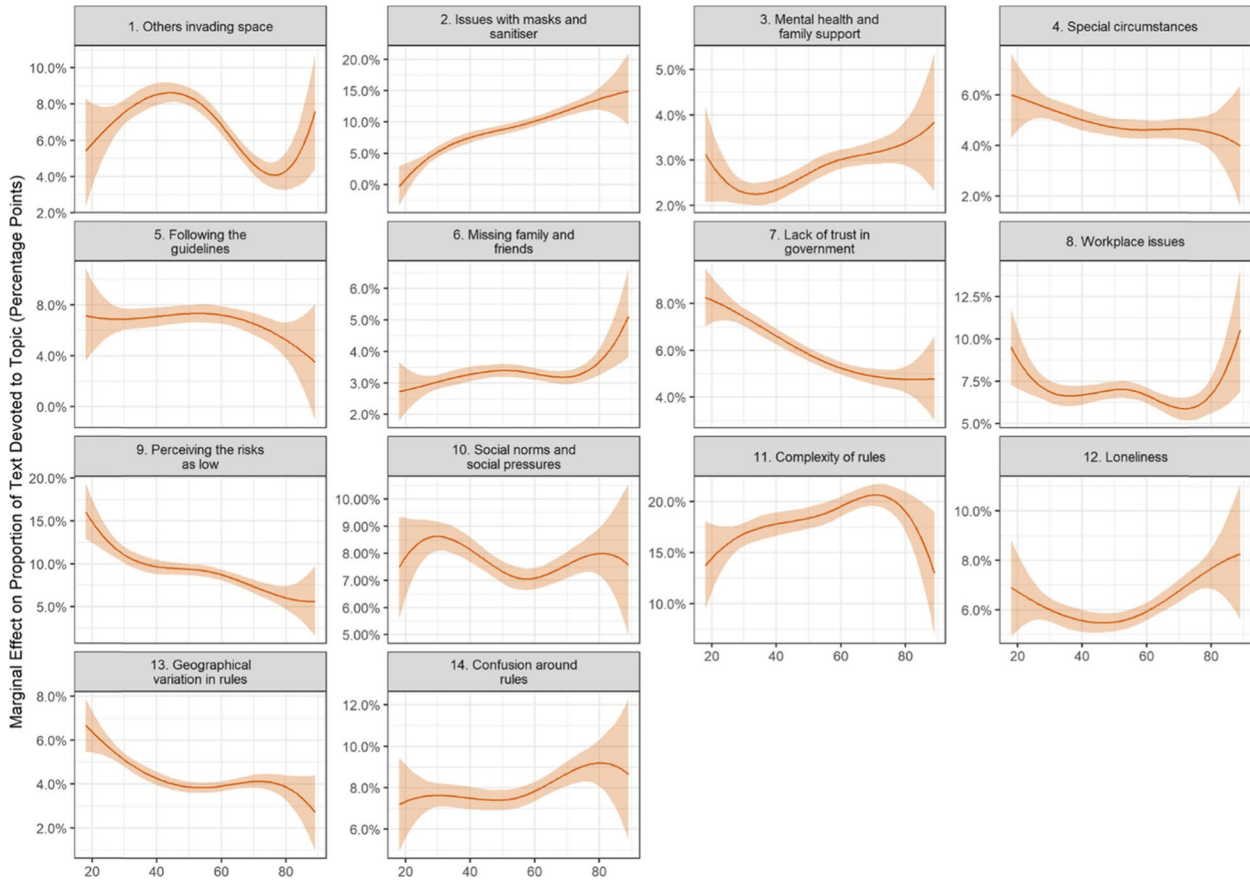
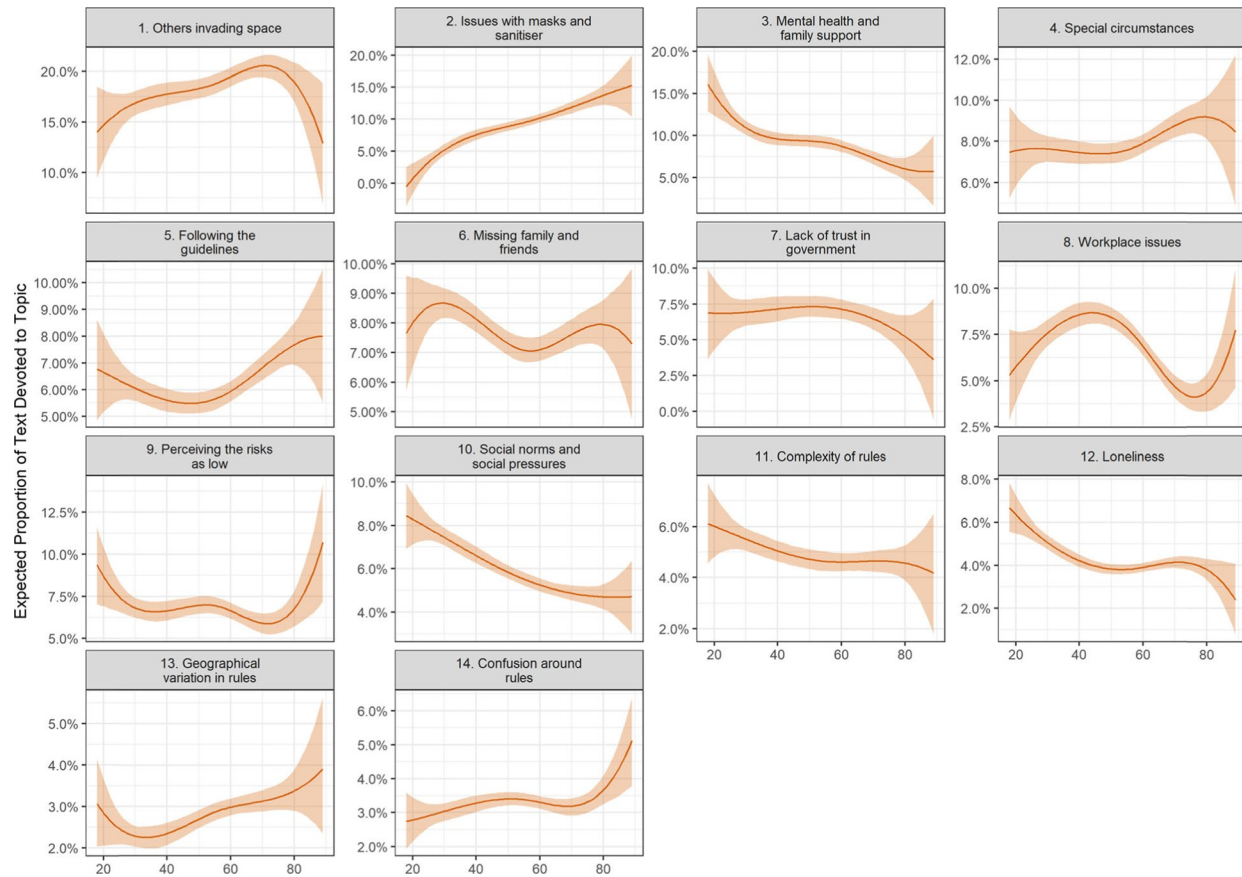


Figure 4 Correct figure 5



Supplementary Information

The online version contains supplementary material available at <https://doi.org/10.1186/s12889-022-12614-1>.

Additional file 1. Supplementary file 1.

Author details

¹Institute of Education, University College London, 55-59 Gordon Square, London WC1H 0NU, UK. ²Department of Behavioural Science and Health, University College London, 1-19 Torrington Place, London WC1E 7HB, UK.

Published online: 24 March 2022

Reference

1. Wright L, Paul E, Steptoe A, et al. Facilitators and barriers to compliance with COVID-19 guidelines: a structural topic modelling analysis of free-text data from 17,500 UK adults. BMC Public Health. 2022;22:34. <https://doi.org/10.1186/s12889-021-12372-6>.

Ready to submit your research? Choose BMC and benefit from:

- fast, convenient online submission
- thorough peer review by experienced researchers in your field
- rapid publication on acceptance
- support for research data, including large and complex data types
- gold Open Access which fosters wider collaboration and increased citations
- maximum visibility for your research: over 100M website views per year

At BMC, research is always in progress.

Learn more biomedcentral.com/submissions

