



## Article

# Histochemical and Phytochemical Analysis of *Lamium album* subsp. *album* L. Corolla: Essential Oil, Triterpenes, and Iridoids

Agata Konarska <sup>1</sup>, Elżbieta Weryszko-Chmielewska <sup>1</sup>, Anna Matysik-Woźniak <sup>2</sup> , Aneta Sulborska <sup>1,\*</sup>, Beata Polak <sup>3</sup> , Marta Dmitruk <sup>1,\*</sup>, Krystyna Piotrowska-Weryszko <sup>1</sup>, Beata Stefańczyk <sup>3</sup> and Robert Rejdak <sup>2</sup>

<sup>1</sup> Department of Botany and Plant Physiology, University of Life Sciences, Akademicka 15, 20-950 Lublin, Poland; agata.konarska@up.lublin.pl (A.K.); elaweryszko@wp.pl (E.W.-C.); krystyna.piotrowska@up.lublin.pl (K.P.-W.)

<sup>2</sup> Department of General Ophthalmology, Medical University of Lublin, Chmielna 1, 20-079 Lublin, Poland; annawozniak@umlub.pl (A.M.-W.); robert.rejdak@umlub.pl (R.R.)

<sup>3</sup> Department of Physical Chemistry, Medical University of Lublin, Chodźki 4A, 20-093 Lublin, Poland; beata.polak@umlub.edu.pl (B.P.); office.stefanczyk@gmail.com (B.S.)

\* Correspondence: aneta.sulborska@up.lublin.pl (A.S.); marta.dmitruk@up.lublin.pl (M.D.); Tel.: +48-81-445-65-79 (A.S.); +48-81-445-68-13 (M.D.)



**Citation:** Konarska, A.; Weryszko-Chmielewska, E.; Matysik-Woźniak, A.; Sulborska, A.; Polak, B.; Dmitruk, M.; Piotrowska-Weryszko, K.; Stefańczyk, B.; Rejdak, R. Histochemical and Phytochemical Analysis of *Lamium album* subsp. *album* L. Corolla: Essential Oil, Triterpenes, and Iridoids. *Molecules* **2021**, *26*, 4166. <https://doi.org/10.3390/molecules26144166>

Academic Editor: Natalizia Miceli

Received: 15 May 2021

Accepted: 6 July 2021

Published: 8 July 2021

**Publisher's Note:** MDPI stays neutral with regard to jurisdictional claims in published maps and institutional affiliations.



**Copyright:** © 2021 by the authors. Licensee MDPI, Basel, Switzerland. This article is an open access article distributed under the terms and conditions of the Creative Commons Attribution (CC BY) license (<https://creativecommons.org/licenses/by/4.0/>).

**Abstract:** The aim of this study was to conduct a histochemical analysis to localize lipids, terpenes, essential oil, and iridoids in the trichomes of the *L. album* subsp. *album* corolla. Morphometric examinations of individual trichome types were performed. Light and scanning electron microscopy techniques were used to show the micromorphology and localization of lipophilic compounds and iridoids in secretory trichomes with the use of histochemical tests. Additionally, the content of essential oil and its components were determined using gas chromatography-mass spectrometry (GC-MS). Qualitative analyses of triterpenes carried out using high-performance thin-layer chromatography (HPTLC) coupled with densitometric detection, and the iridoid content expressed as aucubin was examined with spectrophotometric techniques. We showed the presence of iridoids and different lipophilic compounds in papillae and glandular and non-glandular trichomes. On average, the flowers of *L. album* subsp. *album* yielded 0.04 mL/kg of essential oil, which was dominated by aldehydes, sesquiterpenes, and alkanes. The extract of the *L. album* subsp. *album* corolla contained  $1.5 \times 10^{-3} \pm 4.3 \times 10^{-4}$  mg/mL of iridoid aucubin and three triterpenes: oleanolic acid,  $\beta$ -amyrin, and  $\beta$ -amyrin acetate. Aucubin and  $\beta$ -amyrin acetate were detected for the first time. We suggest the use of *L. album* subsp. *album* flowers as supplements in human nutrition.

**Keywords:** aucubin; biologically active substances;  $\beta$ -amyrin;  $\beta$ -amyrin acetate; glandular and non-glandular trichomes; oleanolic acid; white dead-nettle

## 1. Introduction

Volatile substances are produced by plants mainly in glandular trichomes, which are spread over aerial vegetative organs [1]. In flowers, volatile organic compounds are emitted from petals during floral maturation [2]. In reproductive organs, essential oils are produced by specialized scent glands, i.e., osmophores, located in various floral elements [3,4]. Plants from the family Lamiaceae are characterized by a high content of essential oils [5].

Essential oils are natural multi-component mixtures of products derived from the secondary metabolism in plants. These mixtures and some of their components exhibit a broad spectrum of biological and pharmacological activities. It has been found that the action of whole essential oils is stronger than that of its individual components [6–8].

Floral volatile organic compounds play an important role in the interaction between plants and various environmental factors. Terpenoids and benzenoids are important components of these substances [9–11]. An important function of floral volatile organic compounds is to attract potential pollinators [1,4,12]. The entomophilic *L. album* flowers

are characterized by a delicate scent, which is emitted not only by petals [13] but also by the aromatic nectar [14]. The scent of this species of flowers is attractive to many groups of insects that visit these flowers, e.g., bumblebees, honeybees, wild bees, noctuid moths, butterflies, and syrphids [13]. Volatile organic compounds also facilitate communication among plants in the event of parasite attacks. A damaged plant emits a signal to nearby plants, which can then prepare defense responses [15].

Terpenoids exhibit anti-insect, anti-bacterial, and anti-fungal activity. They reduce insect feeding and development and can lead to insect death. Mainly diterpenoids are insect antifeedants [16] (pp. 315–324), while sesquiterpenes may exert deterrent effects against herbivores [17,18].

Species from the genus *Lamium* are iridoid-rich plants containing essential oils with pharmacological activity through their anticancer, antioxidant, antibacterial, antiviral, anti-inflammatory, antiarthritic, immunomodulatory, neuroprotective, and wound-healing effects [18–21]. Differences in the content of volatile compounds in plants can be caused by biotic and abiotic stresses [22,23]. It has been shown that stress most often increases the emission of terpenes in plants, e.g., monoterpenes [24] and sesquiterpenes [25]. It has also been found that the same species may include cultivars that differ in the stress response mechanism associated with terpene production [22].

The composition of *L. album* essential oil may be highly diverse. Various researchers have detected the presence of over 100 compounds therein. The main compounds include 6,10,14-trimethyl-2-pentadecanone, 4-hydroxy-4-methyl-2-pentanone, pentanol [26], tetradecanol-n, benzoate-isopentyl, phytone, undecane-n, neophytadiene, prenol, farnesene-beta-E, tridecanol n, dodecanoic acid n, hexadecane-n, dodecanoate-butyl, neophytadiene [27], terpeniol, linalool, spatulenol, bisabolol [28], D-germacrene,  $\beta$ -caryophyllene [18], squalene, octadecanoic acid, tricosane, and pentacosane [29].

Triterpenes are other compounds with broad pharmacological activity contained in *L. album* flowers [18]. They have anticancer, anti-inflammatory, antimicrobial, antitumoral, antiulcerogenic, and antiviral activity [30–34]. Triterpenes detected in *L. album* flowers are represented by oleanolic acid, ursolic acid, and  $\beta$ -amyryn [35–37].

Iridoids are one of the main constituents and potential chemotaxonomic markers in representatives of the genus *Lamium* as well. These secondary metabolites are monoterpenes consisting of an iridane skeleton. They mainly occur as glycosides [20,38]. The following glycoside iridoids have been identified in various *Lamium* species to date: lamalbid [39], albosides A and B [40,41], lamalboside and acteoside [42], hemialboside [40], lamiol, caryoptoside, shanzhiside methyl ester, barlerin, 5-deoxylamiol, phytoecdysone, 24-*epi*-pterosterone, penstemoside [29,43–45], shanzhiside methyl ester, 6-*O*-syringyl-8-*O*-acetylshanzhiside methyl ester, 6 $\beta$ -hydroxyipolamiide, dehydropenstemoside, sesamoside [46], lamioside [47], and isomers lamiridozin A and B [48].

Due to the high content of many secondary metabolites in *L. album* plant organs, extracts from the flowers and shoots are used in the cosmetic industry, especially in hair care formulations [49,50] and as skin-soothing and anti-inflammatory agents [51,52]. Additionally, *Lamium album* can be used as food, e.g., young leaves and stem tips can be boiled and eaten as a vegetable or cooked in soup, or the leaves can be chopped and added to omelettes [53,54]. The leaves can be consumed like spinach [55,56]. Candied flowers of this species are used as edible decorations of desserts [53], whereas fresh ones are used for making wine [57] or decorating salads [56].

Our previous study provided the first analysis of trichomes present in *L. album* flowers. Trichome morphotypes that were characteristic of *L. album* subsp. *album* flowers were distinguished and phenolic acids, flavonoids, and tannins were localized [58]. The petal and stamen indumentum comprised six types of glandular trichomes and two types of non-glandular trichomes. The glandular trichomes present in the corolla were identified as peltate trichomes and short-stalked trichomes with a 1-, 2-, 3- and 4-celled head. The non-glandular trichomes on the corolla were represented by unicellular conical trichomes and 2–5-celled uniseriate unbranched trichomes. On the stamens, which constitute herbal

material together with the corolla, long-stalked capitate trichomes and flattened single-celled mechanical trichomes were found [58].

Studies conducted by other authors on *L. album* trichomes focused on leaves, stems, and the calyx. The types of trichomes observed on these organs by other authors largely differed from trichomes located on the corolla in this species [59–61].

Plants of the Lamiaceae family are known to produce many biologically active secondary metabolites [18,38,62]. In the scientific literature, histochemical analyses were used to determine the distribution of various compounds in the trichomes of many plant species of this family. However, there was no information about the identification and location of biologically active substances in the tissues of *L. album* flowers, which are a valuable medicinal and pharmaceutical raw material. In our previous study, we detected phenolic acids, flavonoids and tannins in the corollas of this species [58]. The present study is a continuation and extension of previous research and is now focused on other biologically active compounds. The aim of the present study was (i) to conduct morphometric studies of trichomes present on the bilabiate corolla and stamens in *L. album* subsp. *album*, (ii) to determine the location of essential oil and iridoids in corolla epidermis cells and different types of trichomes based on histochemical assays, (iii) to perform quantitative and qualitative analysis of essential oil contained in the corolla, and (iv) to conduct qualitative analysis of triterpenes and quantitative analysis of iridoids contained in the corolla.

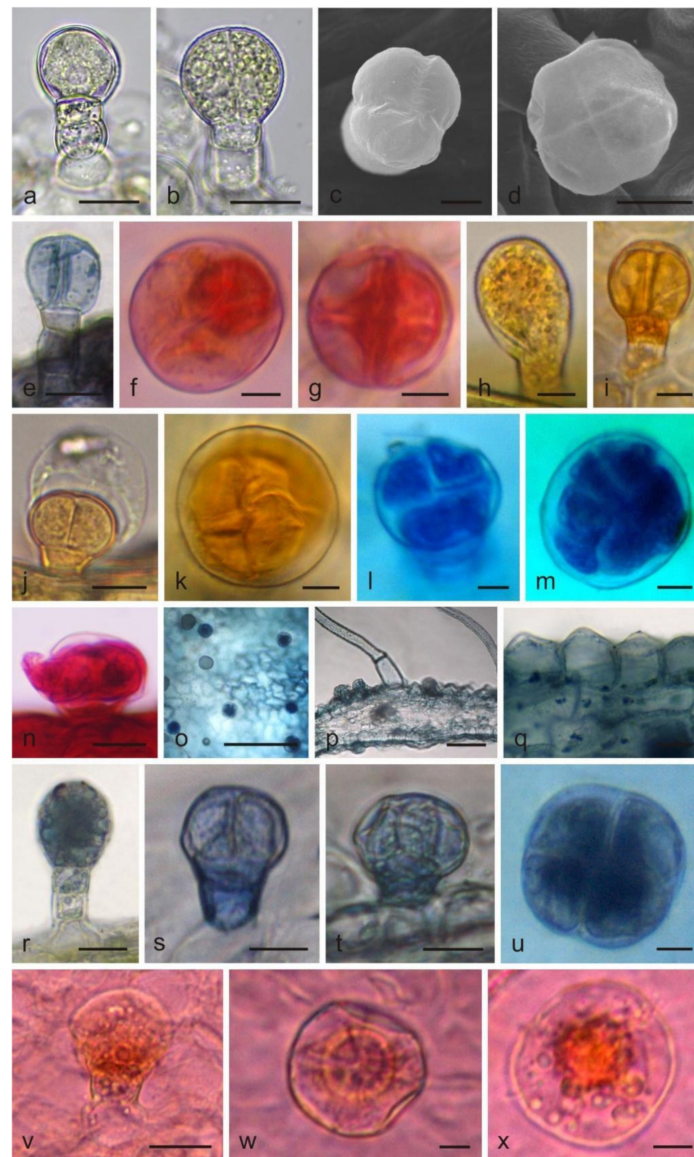
## 2. Results

### 2.1. Morphometric Traits of Trichomes

#### 2.1.1. Corolla

Glandular (capitate and peltate) trichomes and non-glandular trichomes were observed on the corolla. All capitate glandular trichomes on the corolla were short-stalked and had a 1–4 celled head (Figure 1a–c,e). They differed in the number of head-forming cells and sizes. The capitate trichomes with a 1-celled head had a height of ca. 25.5  $\mu\text{m}$  and a 35.6- $\mu\text{m}$  diameter. The capitate trichomes with a 2- and 3-celled head had a similar size, i.e., ca. a height of 27.9  $\mu\text{m}$  and a 43- $\mu\text{m}$  diameter. The capitate trichomes with a 4-celled head were ca. 29.5  $\mu\text{m}$  in height and their diameter was 39.7  $\mu\text{m}$  (Table 1). The peltate trichomes were composed of one basal cell, a unicellular stalk, and a 4–8-celled head, (Figure 1d,f,g). The trichomes were 29.5  $\mu\text{m}$  high and had a diameter of ca. 80.8  $\mu\text{m}$  (Table 1).

The non-glandular trichomes were represented by conical trichomes (Figure 2a–d), long 1–4 celled subulate trichomes (Figure 2e–l), and 1-celled flattened trichomes. The height of the conical trichomes ranged from 40.9 to 197.6  $\mu\text{m}$  and their diameter was in the range from 21.5 to 72.8  $\mu\text{m}$ , like the long trichomes, whose diameter was similar but the height varied substantially. The long 2–4-celled trichomes were on average almost 5-fold higher than the 1-celled trichomes, and their height ranged from 409  $\mu\text{m}$  to 1273.8  $\mu\text{m}$ . The flattened 1-celled trichomes had an average length of 437.8  $\mu\text{m}$  and a diameter of 35.8  $\mu\text{m}$  (Table 1).



**Figure 1.** Capitulate and peltate trichomes and papillae on the *L. album* subsp. *album* corolla and the results of histochemical assays. (a,b) Trichomes without staining (LM); (c,d) trichomes visible in SEM; (e–x) trichomes after histochemical assays (LM); (a) Capitulate trichome with a 1-celled head; (b) Capitulate trichome with 2-celled head; (c) Capitulate trichome with 3-celled head; (d) Peltate trichome with a 4-celled head; (e) Capitulate trichome stained blue after Sudan Black B treatment (lipids); (f,g) Peltate trichomes stained red after Sudan Red B application (total lipids); (h–j) Capitulate trichomes and (k) peltate trichome stained orange after Sudan III treatment (lipids); (l,m) Peltate trichomes stained blue after Nile blue application (acid lipids); (n) Peltate trichome stained red after Neutral Red treatment (terpenes/essential oil); (o–u) Trichomes and papillae stained blue after Nadi reagent application (terpenes); (v–x) Trichomes stained purple-pink after Godin reagent treatments (iridoids). Scale bars: 500  $\mu\text{m}$  (o), 50  $\mu\text{m}$  (p), 20  $\mu\text{m}$  (a,b,f,g,j–n,q–x), 10  $\mu\text{m}$  (c,d,h,i).

**Table 1.** Dimensions of trichomes on *Lamium album* subsp. *album* corolla and stamens.

Types of Trichomes	Height ( $\mu\text{m}$ )		Diameter ( $\mu\text{m}$ ) *	
	Min–Max	Mean	Min–Max	Mean
<b>Corolla</b>				
Short-stalked glandular trichomes				
Peltate	26.0–31.2	29.5 $\pm$ 1.8	71.3–97.6	80.8 $\pm$ 10.5
Capitate with 1-celled head	23.4–29.0	25.5 $\pm$ 2.0	28.6–40.6	35.4 $\pm$ 5.3
Capitate with 2- and 3-celled head	23.4–31.7	27.9 $\pm$ 2.8	28.6–52.8	43.0 $\pm$ 8.6
Capitate with 4-celled head	26.4–31.7	29.5 $\pm$ 1.8	34.3–44.9	39.7 $\pm$ 0.0
Non-glandular trichomes				
Long 1-celled	102.3–204.6	161.6 $\pm$ 34.5	10.2–20.5	15.1 $\pm$ 3.6
Long 2–4 celled	409.0–1273.8	753.2 $\pm$ 330.8	12.3–25.6	17.9 $\pm$ 5.0
Conical	40.9–197.6	125.2 $\pm$ 55.8	21.5–72.8	41.7 $\pm$ 18.9
Flattened long 1-celled	409.2–480.8	437.8 $\pm$ 28.5	25.6–51.2	35.8 $\pm$ 9.2
<b>Stamen</b>				
Long-stalked glandular trichomes				
Capitate with 1–4 celled head	15.8–28.6	20.9 $\pm$ 4.2	97.6–213.0	157.1 $\pm$ 39.5
Non-glandular trichomes				
Long 1 celled	613.8–945.6	778.6 $\pm$ 110.5	10.2–18.5	14.6 $\pm$ 2.8

Values are means  $\pm$  SD. \* The diameter was measured at the widest place of trichome.

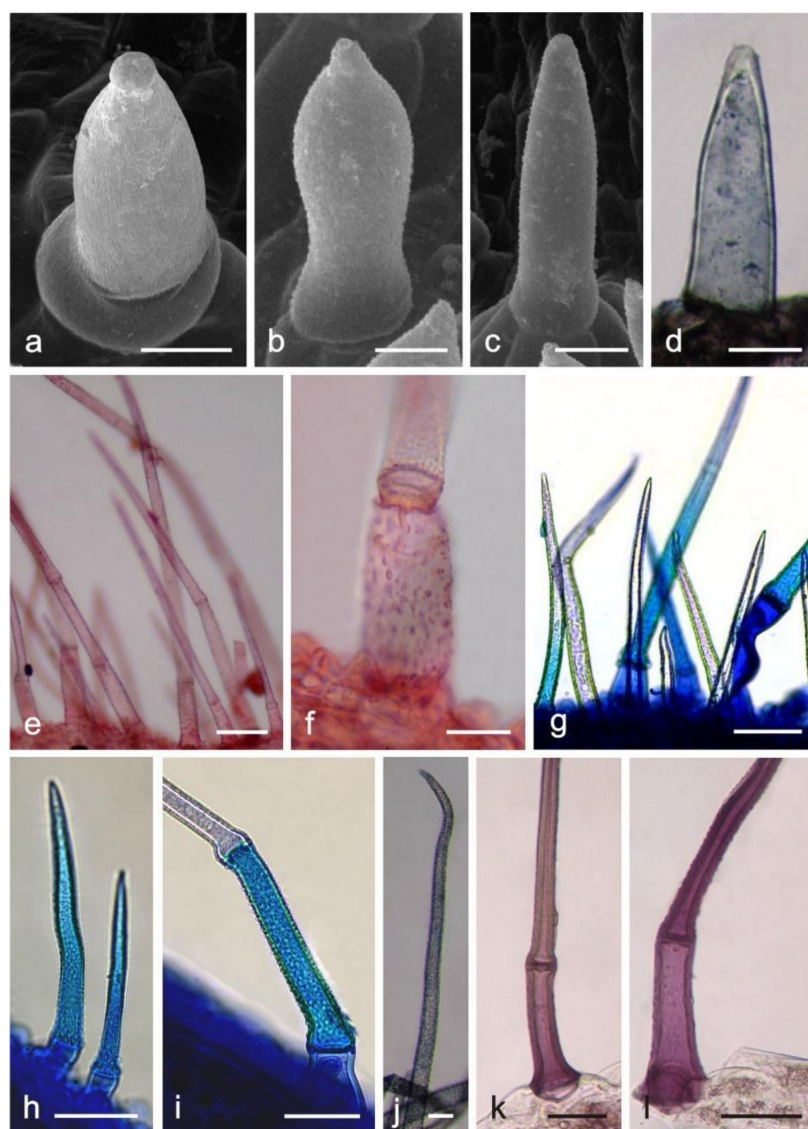
### 2.1.2. Stamen

Long-stalked glandular trichomes with a 3–5-celled stalk and a 1–4 celled head were present on the surface of anthers and filaments (Figure 3a–l). The trichomes had a height of 157  $\mu\text{m}$  and a diameter of ca. 21  $\mu\text{m}$ . Additionally, there were unicellular non-glandular trichomes on the anthers with a height of 778.6  $\mu\text{m}$  and a ca. 15- $\mu\text{m}$  diameter (Table 1).

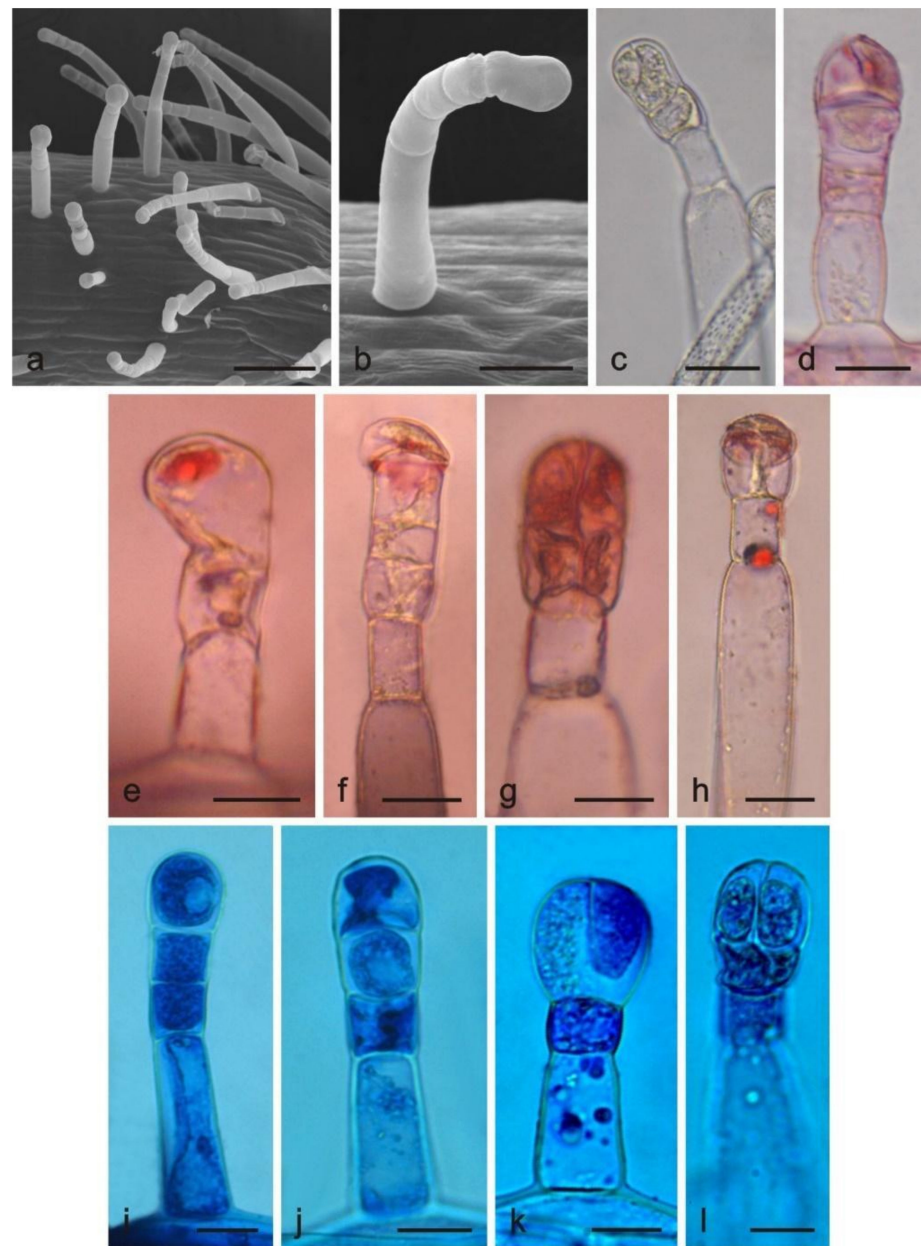
### 2.2. Histochemistry

The histochemical assays revealed the presence of various substances, i.e., total lipids, acidic lipids, neutral lipids, terpenes, essential oil, and iridoids, in glandular and non-glandular trichomes located on the corolla, in glandular trichomes from stamens, and in corolla papillae (Table 2).

In the fresh control samples, the secretory product was dark yellow in the short capitate and peltate trichomes on the corolla (Figure 1b), light yellow in the long capitate trichomes on the stamen (Figure 3c), and light yellow in the papillae (not shown). The lipids present in the trichomes stained dark blue after application of Sudan Black B (Figure 1e). After the Sudan Red B treatment, there were red-stained total lipids in the heads of glandular trichomes (Figure 1f,g) and in the papillae. In turn, Sudan III stained the trichome cell content orange (Figure 1h–k). The Nile Blue treatment showed the presence of intense, blue-stained acid lipids in all trichome types (Figures 1l,m, 2g–i and 3i–l). Terpenes/essential oils were present in the papillae and in all types of glandular trichomes, which was confirmed by the treatment of the material with Neutral Red, which stained these substances red (Figures 1n and 3d–h), and with the violet-blue staining Nadi reagent (Figures 1o–u and 2d–j).



**Figure 2.** Non-glandular trichomes on the *L. album* subsp. *album* corolla and the results of histochemical assays. (a–d) Conical trichomes; (a–c) SEM images; (d) LM image; (e–l) Subulate trichomes; (e,f) Trichomes stained red after Neutral Red treatment (terpenoids/essential oil); (g–i) Trichomes stained blue after Nile Blue application (lipids); (j) Trichome stained dark blue after Nadi reagent treatment (terpenes/essential oil); (k,l) Trichomes stained pink-purple after Godin reagent treatment (iridoids). Scale bars: 500  $\mu\text{m}$  (g), 100  $\mu\text{m}$  (e), 50  $\mu\text{m}$  (b–d,h,i,k,l), 30  $\mu\text{m}$  (a), 20  $\mu\text{m}$  (f), 10  $\mu\text{m}$  (j).



**Figure 3.** Long-stalked glandular trichomes present on *L. album* subsp. *album* stamens. (a,b) SEM images of trichomes; (c–l) LM images; (c) Trichome without staining; (d–h) Trichomes with red-stained content after Neutral Red treatment (terpenoids/essential oil); (i–l) Trichomes stained blue after Nile Blue treatment (acid lipids). Scale bars: 100  $\mu\text{m}$  (a), 30  $\mu\text{m}$  (b), 5  $\mu\text{m}$  (c–l).

The presence of iridoids in the examined corolla structures was possible to detect with the use of Godin reagent, which stained these compounds pink-purple in the short capitate and peltate trichomes (Figure 1v–x) and purple in the epidermal cells, papillae, and non-glandular trichomes (Figure 2k,l).

**Table 2.** Histochemical reactions of *Lamium album* subsp. *album* corolla trichomes.

Test	Compound	Colour Observed	Corolla				Stamens
			Papillae	Types of Trichomes			Long Capitate
				Short Capitate	Peltate	Non Glandular	
Sudan Black B	total lipids	dark blue	+	+	+	+	nd
Sudan Red B	total lipids	red	+	+	++	+	++
Sudan III	total lipids	orange	+	++	++	±	+
Nile Blue	acidic lipids	blue	++	++	++	++	++
	neutral lipids	pink	–	–	–	–	–
Nadi reagent	terpenes, essential oil	violet-blue or purple	+	++	++	±	±
Neutral Red	terpenoids, essential oil	red	+	++	++	+	+
Godin reagent	iridoids	violet or pink	±	+	+	++	nd

– negative, ± slightly positive, + positive, ++ strongly positive, nd—not determined.

### 2.3. Phytochemical Analyses of the *L. album* subsp. *album* Corolla

#### 2.3.1. Analysis of the Essential Oil Composition

The fresh and dried flowers of *L. album* subsp. *album* yielded 0.044 mL/kg and 0.036 mL/kg of essential oil, respectively. The essential oils detected in the fresh and dried flowers were found to contain 33 and 30 components, which constituted 91.1% and 85.6% of the overall composition of the oil, respectively (Tables 3 and 4). The composition of the essential oil from the fresh flowers was dominated by aldehydes (59.9%) and sesquiterpenes (16.4%), whereas the oil extracted from the dried flowers contained 2.5-fold higher content of sesquiterpenes (42.1%) and alkanes (22%) and over 4.5-fold lower levels of aldehydes (12.9%). Lower contents of alcohols (4.8%), sesquiterpenoids (2.2%), and monoterpenes (1.9%) were determined in the fresh flower oil. Similarly, small amounts of monoterpenes (3.4%), alcohols (2.8%), and sesquiterpenoids (1.3%) were identified in the oil from the dried flowers. Geranial (36.4%) and neral (23.2%) aldehydes, as well as caryophyllene oxide (12.5%) from the class of sesquiterpenes, constituted the highest proportion in the essential oil from the fresh flowers. Branched-chain alkane (21.9%), germacrene D (21.2%), caryophyllene oxide (8.2%), and *E*- $\beta$ -caryophyllene (6.6%) sesquiterpenes, as well as geranial aldehyde (8.4%), were the dominant compounds in the oil from the dried flowers. Monoterpenoids, alkybenzenes, ketones, and epoxides were present in both oils in the lowest amounts (<1%) (Table 3). The identification of the essential oil compounds from *L. album* subsp. *album* corolla in the chromatograms is presented in Figures 4 and 5.

#### 2.3.2. High-Performance Thin Layer Chromatography (HPTLC) Analysis of Triterpenes

The densitogram of separated triterpene standards is presented in Figure 6.  $\beta$ -amyryn acetate migrates over the longest distance, a moderate distance is covered by  $\beta$ -amyryn, and oleanolic acid reaches the shortest distance. This order of the spot is in accordance with the physicochemical properties of these triterpenes.  $\beta$ -amyryn acetate is the most non-polar compound, whereas oleanolic acid is the most polar among the investigated products. The intensity of oleanolic acid absorbance is lower in comparison to the other triterpenes.



**Table 3.** Chemical composition of essential oil of *Lamium album* subsp. *album* corollas.

No.	Compound	Retention Time (min)	RRI	AI	Dry Corollas %	Fresh Corollas %
<b>Monoterpenes</b>						
Monoterpenes hydrocarbon						
1	$\alpha$ -thujene	9.79	932	924	0.7	-
2	camphene	10.32	946	946	0.1	0.2
3	limonene + $\beta$ -phellandrene	13.40	1029	-	0.4	-
4	$\gamma$ -terpinene	14.55	1060	1062	0.2	-
Oxygenated monoterpenes						
1	2,3-dehydro-1,8-cineole	11.89	989	988	-	0.6
2	2-pentyl-furan	12.03	993	984	0.5	0.2
3	terpinen-4-ol	18.95	1178	1174	0.1	-
4	isogeranial	19.23	1186	1160	-	0.2
5	$\beta$ -citronellol	20.84	1232	1223	-	0.3
6	carvone	21.29	1244	1239	1.4	
7	geranyl acetate	26.07	1386	1379	-	0.4
<b>Monoterpenoids</b>						
Oxygenated						
1	$\alpha$ -terpineol	19.44	1192	1186	-	0.4
<b>Sesquiterpenes</b>						
Sesquiterpenes hydrocarbon						
1	$\delta$ -elemene	24.53	1339	1335	1.4	
2	longicyclene	25.47	1378	1371	-	0.4
3	$\alpha$ -copaene	25.82	1378	1374	0.46	0.1
4	$\beta$ -elemene	26.33	1394	1398	2.7	0.1
4	( <i>E</i> )- $\beta$ -caryophyllene	27.22	1422	1417	6.6	0.4
5	germacrene D	29.17	1484	1484	21.2	-
6	$\gamma$ -cadinene	30.19	1517	1513	1.1	2.7
7	$\delta$ -cadinene	30.46	1526	1522	0.4	0.2
Oxygenated sesquiterpenes						
1	caryophyllene oxide	32.25	1587	1582	8.2	12.5
<b>Sesquiterpenoids</b>						
Sesquiterpenoids hydrocarbon						
1	$\beta$ -bourbonene	26.10	1387	1387	0.6	-
2	( <i>E</i> )- $\alpha$ -bergamotene	27.73	1438	1434	-	0.3

Table 3. Cont.

No.	Compound	Retention Time (min)	RRI	AI	Dry Corollas %	Fresh Corollas %
<b>Oxygenated sesquiterpenoids</b>						
1	epi-cubebol	29.59	1497	1493	-	0.2
2	10-epi-cubebol	30.68	1534	1533	0.4	0.6
3	epi-cubenol isomer	33.18	1619	-	0.2	0.3
4	$\gamma$ -eudesmol	33.65	1635	1630	-	0.3
5	epi- $\alpha$ -cadinol	33.96	1646	1638	-	0.3
6	$\alpha$ -eudesmol	34.20	1655	1652	0.1	0.2
<b>Alkybenzenes</b>						
1	p-cymene	13.27	1026	1089	0.1	-
<b>Aldehydes</b>						
Aromatic						
1	benzeneacetaldehyde	14.30	1053	-	0.2	-
Aliphatic unsaturated aldehydes						
1	isoneral	18.47	1165	1160	-	0.3
2	neral	21.18	1241	1235	4.3	23.2
3	geranial	22.21	1271	1264	8.4	36.4
<b>Alcohols</b>						
Unsaturated aliphatic alcohols						
1	linalool	16.08	1100	1098	0.5	0.7
2	nonen-1-ol	16.23	1104	1152	0.7	-
3	elemol	31.22	1552	1548	1.6	2.2
Cyclic alcohols						
1	borneol	18.47	1165	1165	-	0.2
2	cedrol	32.79	1605	1600	-	1.7
<b>Alkanes</b>						
1	n-tetradecane	26.56	1401	1400	0.1	-
2	branched-chain alkane	28.51	1463	-	21.9	-
<b>Ketones</b>						
1	piperitone	21.68	1256	1249	-	0.4
2	( <i>E</i> )- $\beta$ -damascenone	26.10	1387	1361	0.6	-
<b>Epoxides</b>						
1.	1,2-humulene epoxide	33.02	1613	1608	0.9	0.9

Table 3. Cont.

No.	Compound	Retention Time (min)	RRI	AI	Dry Corollas %	Fresh Corollas %
Unknown						
1	unknown 1284	22.49	1279	-	-	1.4
2	unknown 1291	22.67	1284	-	-	2.0
3	unknown 1679	34.76	1675	-	-	0.9

\* Total 91.1% \* Total 85.6%

RRI—relative retention index, AI—Arithmetic Index on DB-5 in reference to n-alkanes [63]. \* The Table does not include compounds present in the amount &lt;0.1% and unknown compounds &lt;0.5%.

Table 4. Chemical structures of the most important compounds isolated from *L. album* subsp. *album* essential oil.



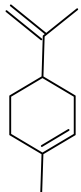
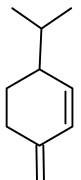
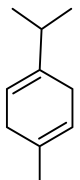
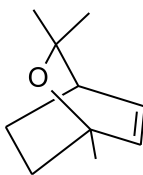
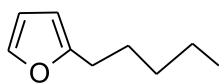
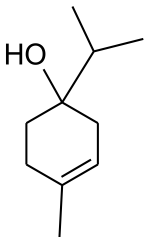
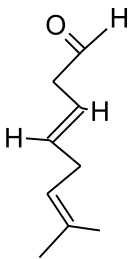
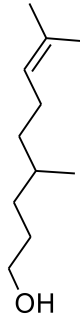
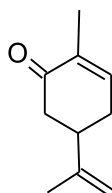
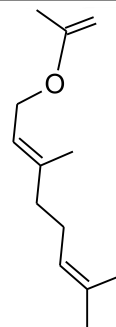
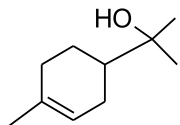
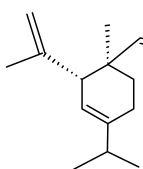
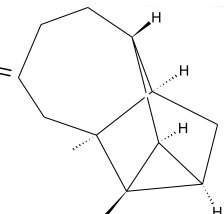
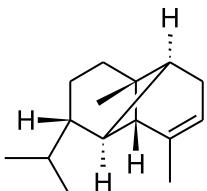
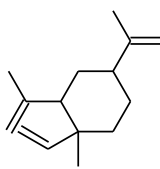
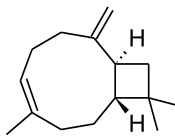
Monoterpenes hydrocarbon						
						
thujene	camphene	limonene	$\beta$ -phellandrene	$\gamma$ -terpinene		
Oxygenated monoterpenes						
						
2,3-dehydro-1,8-cineole	2-pentyl-furan	terpinen-4-ol	isogeranial	$\beta$ -citronellol	carvone	geranyl acetate
Monoterpenoids oxygenated						
						
$\alpha$ -terpineol						
Sesquiterpenes hydrocarbon						
						
$\delta$ -elemene	longicyclene	$\alpha$ -copaene	$\beta$ -elemene	( <i>E</i> )- $\beta$ -caryophyllene		

Table 4. Cont.

Monoterpenes hydrocarbon				
germacrene D	$\gamma$ -cadinene	$\delta$ -cadinene		
Oxygenated sesquiterpenes		Sesquiterpenoids hydrocarbon		
caryophyllene oxide	$\beta$ -bourbonene	<i>(E)</i> - $\alpha$ -bergamotene		
Oxygenated sesquiterpenoids				
10-epi-cubebol	$\gamma$ -eudesmol	$\alpha$ -eudesmol	epi- $\alpha$ -cadinol	
Alkybenzenes		Aromatic aldehydes		
p-cymene	benzene acetaldehyde	isoneral	neral	geranial
Unsaturated aliphatic alcohols		Cyclic alcohols		
linalool	3-nonen-1-ol	elemol	borneol	cedrol
Alkanes		Ketones		Epoxides
n-tetradecane	piperitone	<i>(E)</i> - $\beta$ -damascenone	1,2-humulene epoxide	

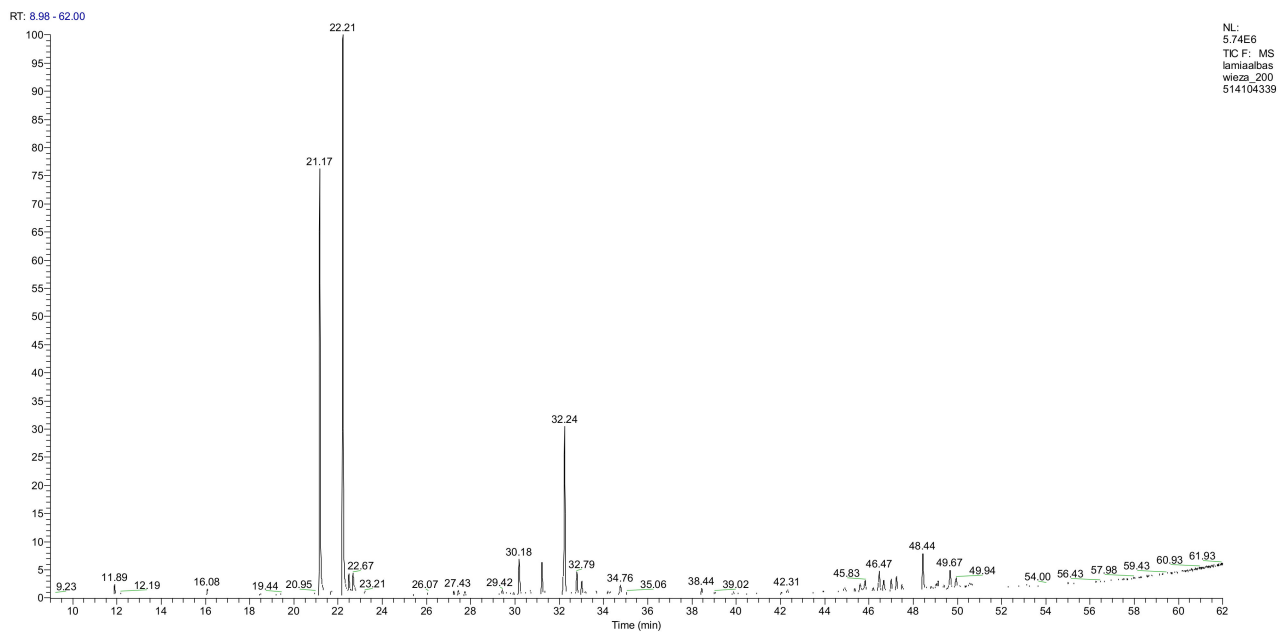


Figure 4. GC-MS chromatogram of *Lamium album* subsp. *album* essential oil obtained from fresh corollas.

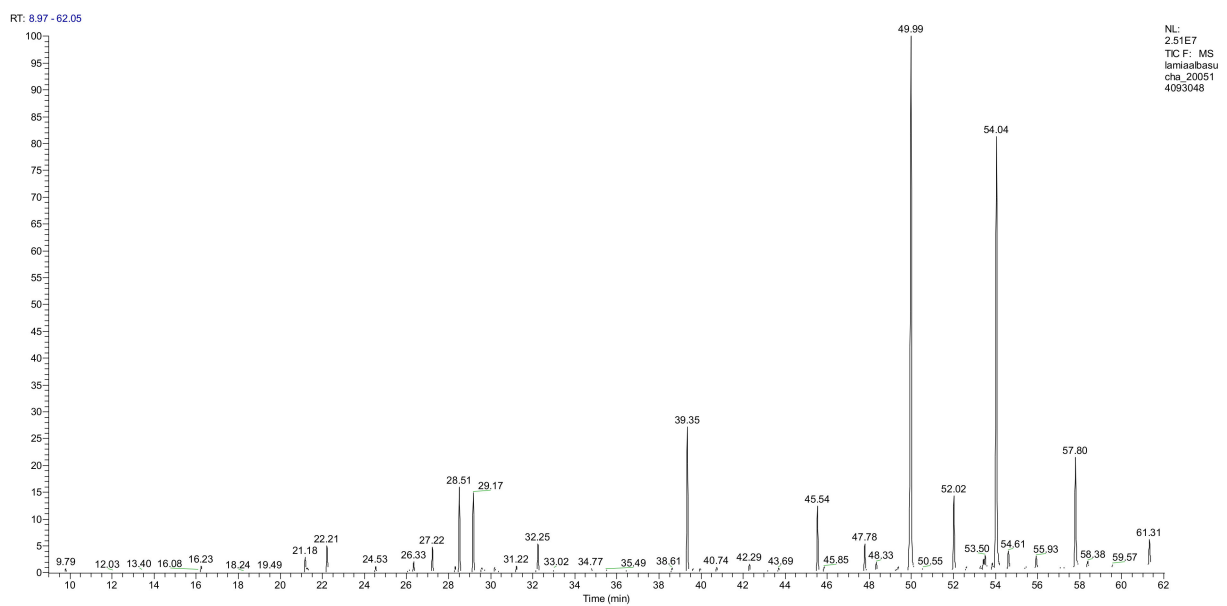
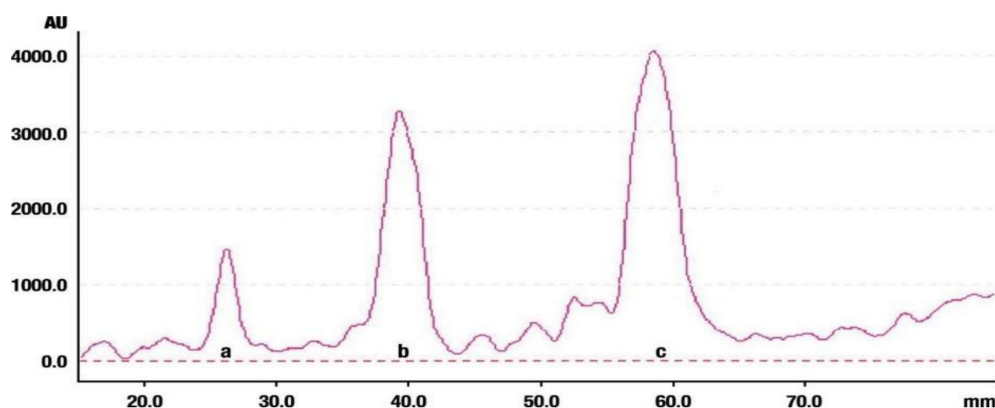
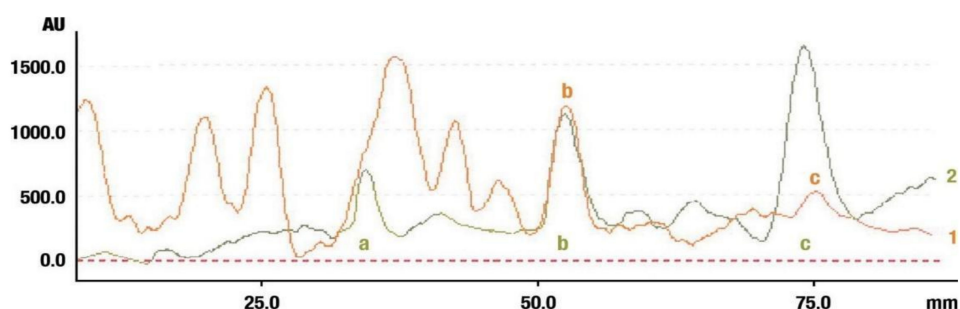


Figure 5. GC-MS Chromatogram of *Lamium album* subsp. *album* essential oil obtained from dry corollas.

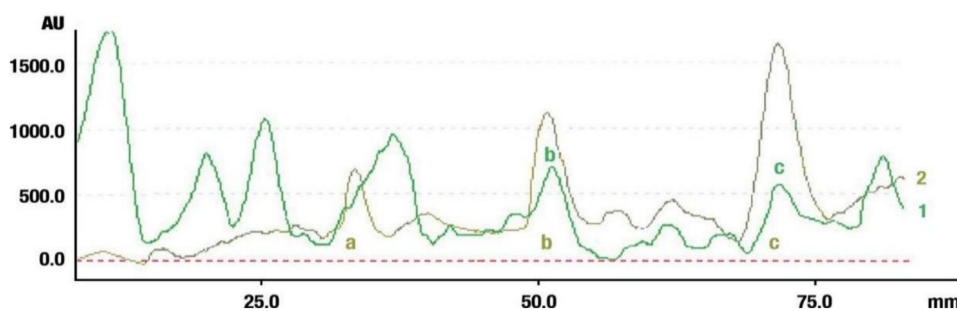


**Figure 6.** Densitogram of the triterpene standard mixture (a—oleanolic acid, b— $\beta$ -amyirin, c— $\beta$ -amyirin acetate). Stationary phase silica gel 60 HPTLC plates, mobile phase n-hexane:dichloromethane:methanol:water (4:5:0.6:0.1 *v/v*). Densitometric detection; derivatization with anise aldehyde.

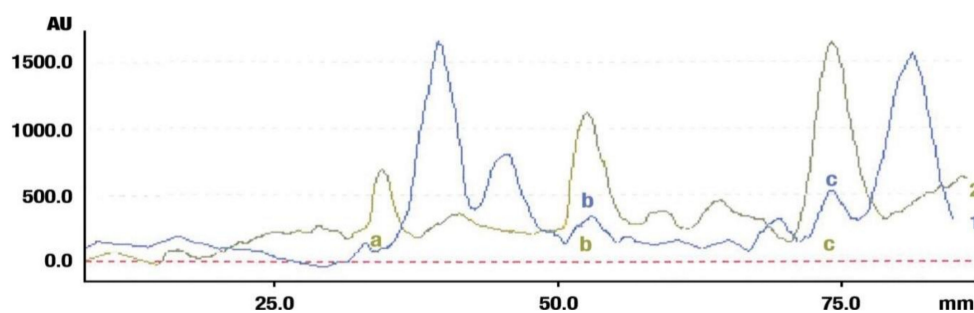
The identification of oleanolic acid,  $\beta$ -amyirin, and  $\beta$ -amyirin acetate in various extracts was performed by comparison of the migration distances of standards and the migration distances of extract zones after chromatographic development. A mixture of n-hexane:dichloromethane:methanol:water (5:4:0.6:0.1 *v/v*) was applied as the mobile phase. After the development, the plate was derivatized with anise aldehyde. Figures 7–9 present identification of triterpene zones in various extracts: methanolic, ethyl acetate, and heptane, respectively.



**Figure 7.** Identification of triterpenes in the chromatogram of the methanolic extract from *Lamium album* subsp. *album* flowers (red, 1) by comparison with the chromatogram of standards (oleanolic acid (a),  $\beta$ -amyirin (b), and  $\beta$ -amyirin acetate (c) (grey line 2). Stationary phase silica gel 60 HPTLC plates, mobile phase n-hexane:dichloromethane:methanol:water (5:4:0.6:0.1 *v/v*). Densitometric detection after derivatization with anise aldehyde.



**Figure 8.** Identification of triterpenes in the chromatogram of the ethyl acetate extract from *Lamium album* subsp. *album* flowers (green, 1) by comparison with the chromatogram of standards (oleanolic acid (a)  $\beta$ -amyirin (b), and  $\beta$ -amyirin acetate (c) (grey line 2). Stationary phase silica gel 60 HPTLC plates, mobile phase n-hexane:dichloromethane:methanol:water (5:4:0.6:0.1 *v/v*). Densitometric detection after derivatization with anise aldehyde.

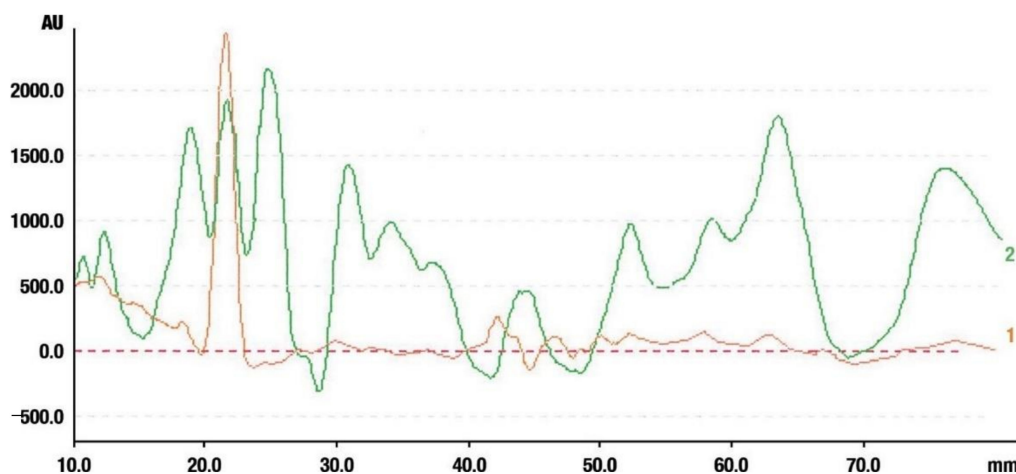


**Figure 9.** Identification of triterpenes in the chromatogram of the heptane extract from *Lamium album* subsp. *album* flowers (blue, 1) by comparison with the chromatogram of standards (oleanoic acid (a)  $\beta$ -amyrin (b), and  $\beta$ -amyrin acetate (c) (grey line 2). Stationary phase silica gel 60 HPTLC plates, mobile phase n-hexane:dichloromethane:methanol:water (5:4:0.6:0.1 v/v). Densitometric detection after derivatization with anise aldehyde.

$\beta$ -amyrin and  $\beta$ -amyrin acetate were determined in all extracts. The content of the former compound in the methanolic extract from *L. album* subsp. *album* flowers (Figure 7) was almost the same as in the standard in terms of the zone area or height. The content of the latter triterpene in the extract was lower in comparison with the standard concentration. The best solvent to extract both compounds ( $\beta$ -amyrin and  $\beta$ -amyrin acetate) was ethyl acetate (Figure 8), whereas the poorest extraction was achieved when heptane was used (Figure 9). The zone of oleanolic acid was hard to detect in all extracts due to co-elution with other compounds.

To solve this problem, further experiments were undertaken after choosing the wavelength of oleanolic acid.

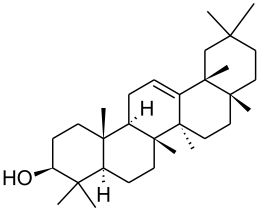
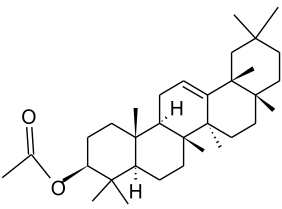
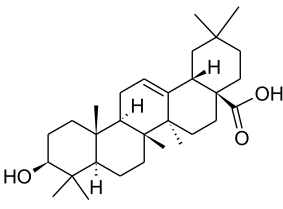
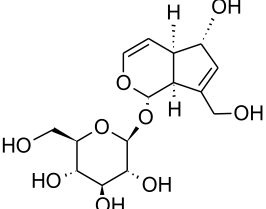
The identification of oleanolic acid in the chromatogram of the ethanolic extract from *L. album* subsp. *album* is presented in Figure 10.



**Figure 10.** Comparison of the separation of the standard solution of the oleanolic acid standard (red line, 1) and the ethanolic extract from *Lamium album* subsp. *album* (green line, 2). Stationary phase silica gel 60 HPTLC plates, mobile phase n-hexane:dichloromethane:methanol:water (5:6:0.4:0.1 v/v). Detection after derivatization with 560 nm.

The chromatographic systems developed for triterpenes were used for quantitative analysis of these compounds in plant raw materials. The chemical structures of the isolated triterpenes are shown in Table 5.

**Table 5.** Chemical structures of the isolated triterpenes and aucubin.

Chemical Structure			
Triterpenes			Iridoids
$\beta$ -amyrin	$\beta$ -amyrin acetate	oleanolic acid	aucubin
			

### 2.3.3. Spectrophotometric Analysis of Iridoids—Aucubin

We decided to use the spectrometric method for quantitative analysis of iridoids (aucubin) in the *L. album* subsp. *album* extract. These compounds were expressed as aucubin (Table 5).

The average content of iridoid aucubin in the *L. album* subsp. *album* flower extract determined with the use of the calibration curve was  $0.0015 \pm 4.3 \times 10^{-4}$  mg/mL (Table 6).

**Table 6.** Average iridoid content in *Lamium album* subsp. *album* flower extract determined as aucubin.

Extract Type	Iridoid Average Content Expressed as Aucubin (mg/mL)	Variance $s^2$	Standard Deviation $s$	$s_r$	Confidence Interval 95%
<i>Lamium album</i> flowers	0.0015	$1.0 \times 10^{-8}$	$1.0 \times 10^{-4}$	1.6	$0.0015 \pm 4.3 \times 10^{-4}$

## 3. Discussion

### 3.1. Trichomes

The histochemical assays used in the present work detected lipids, essential oils, terpenoids, and iridoids in the glandular trichomes of *L. album* subsp. *album* corollas. Since we have not found such information in the literature so far, we present these data for the first time to fill the gap in the knowledge of this issue. Our previous study showed the presence of phenolic compounds: tannins, phenolic acids, and flavonoids in trichomes of this species [58]. The present study is a continuation and extension of our previous research.

The results indicate a heterogenous composition of the secretion in the peltate and capitate trichomes present on *L. album* subsp. *album* corollas. Based on histochemical reactions, the presence of lipids was detected in the cells of all types of glandular trichomes. However, the most intense color reaction was observed in the case of the peltate trichomes (Sudan Red B), which indicates the highest lipid content in the essential oil. The results of the present study largely confirm the findings reported by some authors, who observed the greatest amounts of essential oil contained in peltate trichomes [1,64].

The histochemical assays revealed a less intense reaction to the presence of lipophilic substances in the capitate trichomes of the *L. album* subsp. *album* corollas than in the peltate trichomes. Similarly, other studies reported that capitate trichomes in species from the family Lamiaceae produced fewer lipophilic compounds [65,66].

The presence of terpenes/essential oil was detected with the histochemical method (Nadi reagent) in all glandular trichomes of the *L. album* subsp. *album* corolla. Trichomes of many other species of this family have also been found to produce terpene-rich essential oils [67–69]. Terpenes present in essential oil are probably responsible for the pharmacological activity/medicinal properties and protective function in plants from the family Lamiaceae [68].



Previous studies suggest that different types of trichomes serve specific functions [70,71]. This hypothesis is confirmed by the results of the investigation on trichomes in *Hyssopus officinalis* subsp. *aristatus* (Lamiaceae) conducted by Venditti et al. [72]. The authors showed that short-stalked capitate trichomes produced polysaccharides, only terpenes were present in medium-stalked capitate trichomes, and a complex mixture of phenolic and terpenoid compounds was contained in peltate trichomes. Diversity in the substances produced in different types of glandular trichomes was also observed in *Stachys annua* subs. *annua* [73]. In this species, the presence of lipids, terpenes, and polyphenols was detected in peltate trichomes, lipids and terpenes were mainly produced by short-stalked capitate trichomes, and lipids exclusively were contained in long-stalked capitate trichomes.

In plants from other families, different types of trichomes may specialize in the production of specific secretion. In *Lippia scaberrima* (Verbenaceae), terpenoids were determined as the major components contained in large peltate trichomes and phenolic compounds dominated in small capitate trichomes [74]. In turn, Sacchetti et al. [75] showed that diterpenes were produced in secretory trichomes with a 2-celled head in *Calceolaria adscendens* (Scrophulariaceae), and secretory trichomes with an 8-celled head in *C. volckmanni* produced triterpenes. The dependence of the chemical composition of glandular trichome secretion on the morphology of the secretory head has been suggested in investigations of *Cordia verbenacea* (Boraginaceae) conducted by Vantrella and Marinho [76]. The authors have found that the secretion of globular trichomes consists mainly of essential oil, whereas the secretion of reniform trichomes is dominated by flavonoids.

As shown by our previous observations, short-stalked capitate trichomes with a 2-celled head in *L. album* flowers function non-synchronously [58]. The capitate trichomes located next to each other in *L. album* subsp. *album* were in different stages of metabolic/secretory activity: some stained intense blue in the reaction with Toluidine Blue O (phenolic compounds), other trichomes stained green-blue, and some did not stain at all, which suggested that they were in the post-secretory phase or degenerated. Similar results in a study of capitate trichomes with a 2-celled head present on *Euphrasia stricta* (Orobanchaceae) leaves were reported by Haratym and Weryszko-Chmielewska [77]. This phenomenon seems to be one of the causes of the differences in the amounts of various substances in different types of trichomes.

Mechanical protection is most often reported as the function of non-glandular trichomes, which are referred to as tector or clothing trichomes [78,79]. However, the histochemical assays used in the present study revealed the presence of lipids, terpenes, and iridoids in the cells of the non-glandular trichomes in the *L. album* corollas. In a previous study, we also detected tannins, flavonoids, and pectins in this type of trichomes [58]. Bioactive compounds were also found in non-glandular trichomes of several other Lamiaceae and Verbenaceae species [80]. Similar results were reported in studies of non-glandular trichomes from *Dracocephalum moldavica* leaves, which contained various types of metabolites: phenolic compounds, flavonoids, lipids, and terpenes [69]. These data indicate that non-glandular trichomes not only play a passive protective role but also can actively influence the biotic elements of the environment.

### 3.2. Essential Oil

Significantly low amounts of essential oil were extracted from the fresh and dried *L. album* subsp. *album* flowers (0.044 mL/kg and 0.036 mL/kg, respectively). The level of essential oil in fresh flowers was 22% higher than the content in the dried material. Similarly, half the amount of essential oil from dried vs. fresh *L. album* raw material was obtained by Morteza-Semnani et al. [26]. In turn, Flamini et al. [5] demonstrated considerable variability of essential oil yields in the range of 0.01–0.31% in different *Lamium* species. Previous studies demonstrated that the most volatile components of essential oil evaporate during drying, which may reduce the amount of extracted oil [81,82]. Moreover, some components of essential oil can be decomposed through oxidation and hydroperoxidation at elevated temperatures [83]. Drying at increased temperatures may also result in more

intense degradation of the cell wall and plasma membrane, which may exert an effect on plasma membrane permeability [84]. In contrast, greater amounts of essential oil from dried flowers were extracted by, e.g., Zheljaskov et al. [85], Mashkani et al. [86], and Silva et al. [87].

In the present study, 33 and 30 compounds were identified in the oil extracted from the fresh and dried raw material, respectively. Other investigators reported the presence of a 4-fold higher number (130) [88] or by an over 30% higher number (43) [26] of components in *L. album* essential oil. In turn, Alpieva et al. [29] and Mickiene et al. [27] identified significantly fewer components (12 and 22, respectively).

The composition of the oil extracted from the dried *L. album* subsp. *album* flowers differed considerably from the composition of the oil from the fresh material. Aldehydes, which accounted for almost 60% of all essential oil components, constituted the main group of compounds in the essential oil extracted from the fresh flowers; they were followed by sesquiterpenes in this type of essential oil. The dried flower oil was dominated by sesquiterpenes (42%), alkanes (22%), and aldehydes (12.9%). Many authors reported similar results of the differences in the composition of essential oil, depending on the extraction method used. They suggest that the composition of oil from the same species largely depends on the mode of raw material processing, i.e., drying and distillation methods [81,86,89–91]. Moreover, the differences in the qualitative and quantitative composition of essential oils derived from the same taxon can also be related to other factors, i.e., seasonal variations, plant development phases and age, chemotypes, soil, light intensity, and water availability [88,92–97]. As reported by Salman et al. [98], changes in the amount and composition of essential oils extracted from various taxa from the family Lamiaceae are associated with genetic and environmental factors, which also determine the genetic expression and thus influence the chemism of oil components.

Branched-chain alkanes (21.95%) dominated in the oil from the dried *L. album* subsp. *album* flowers, while the largest amounts of geranial and neral aldehydes (36.4% and 23.2%, respectively) were determined in the fresh material. Substantial amounts of geranial and neral, which are constituents of citral, have also been detected in essential oil from other representatives of Lamiaceae, e.g., *Dracocephalum moldavica* [69], *Melissa officinalis* [99,100], and *Thymus dactylicus* [101]. These aldehydes are considered to have the widest spectrum of antimicrobial [102], ([103] pp. 2973–3008), and antioxidant [104] activities.

In the group of sesquiterpenes, the essential oil from the dried *L. album* subsp. *album* flowers was dominated by germacrene D (21%). As reported by Yordanova et al. [18], the content of this compound in *L. album* essential oil may vary substantially (from 6.9% to 46.7%). The content of germacrene D detected by various authors in oil extracted from flowers, bracts, and leaves of four other *Lamium* species, i.e., *L. purpureum*, *L. hybridum*, *L. bifidum*, and *L. amplexicaule*, was lower than in the *L. album* subsp. *album* flowers [5]. In turn, Nickavar et al. [105] reported that germacrene D was the main compound in the essential oil from *L. amplexicaule* aerial parts, and its content was similar to that detected in the *L. album* subsp. *album* material in the present study. As indicated by a study conducted by Hu et al. [106], germacrene has antitumoral activity against various types of cancer and may potentially serve as an antineoplastic drug. Moreover, the antioxidant potential of germacrene D has been supported by various studies [107,108].

Considerable amounts of caryophyllene oxide sesquiterpene were detected in the oil from the fresh and dried *L. album* subsp. *album* flowers (12.5% and 8.2%, respectively). Large amounts of this compound have also been identified in oil from *L. maculatum* aerial parts [109]. This component exhibits antimicrobial [85], antifungal [110], and insecticidal properties [111,112] and induces apoptosis of neoplastic cells [113].

*E*- $\beta$ -caryophyllene is another sesquiterpene present in the oil extracted in the present study from the dried *L. album* subsp. *album* flowers (6.6%). The presence of  $\beta$ -caryophyllene in the oil from *L. album* flowers was also reported by Kapchina-Toteva et al. [88] and Yordanova et al. [18] as well as Flamini et al. [5] in other *Lamium* species. As shown by Yordanova et al. [18], the content of  $\beta$ -caryophyllene in *L. album* oil may vary from 1.1%

to 13%, depending on plant growth conditions. As demonstrated by various researchers, caryophyllene is attributed a number of biological activities such as anti-inflammatory, anticancer, antibacterial, antioxidant, and local anesthetizing properties. It can also serve as a stimulant for the immune system [18,114–116].

As reported by Flamini et al. [5] and Jones et al. [117], germacrene D and  $\beta$ -caryophyllene are the most common sesquiterpenes contained in essential oil extracted from various species of *Lamium*, e.g., *L. hybridum*, *L. bifidum*, *L. amplexicaule*, and *L. purpureum*. In general, sesquiterpenes exhibit strong anti-inflammatory and anti-allergic properties [118].

Many investigators have shown the presence of large amounts of other components in essential oil from *L. album* flowers. In a study conducted by Alipieva et al. [29], squalene was the main component of oil extracted from flowers of this species. Morteza-Semnani et al. [26] identified 6,10,14-trimethyl-2-pentadecanone and 4-hydroxy-4-methyl-2-pentanone, whereas Kovalvoya et al. [28] detected terpineol, linalool, spatulenol, and bisabolol.

### 3.3. Triterpenes

Some of the triterpenes identified in the *L. album* flowers in the present study have been described earlier in this species by other authors, e.g., oleanolic acid and  $\beta$ -amyirin [35–37]. In turn, the presence of  $\beta$ -amyirin acetate in the flowers of this species was demonstrated in this study for the first time. We also found that ethyl acetate was the best solvent for the extraction of  $\beta$ -amyirin and  $\beta$ -amyirin acetate. In turn, Paduch et al. [37] reported that heptane extracts contained the largest amounts of  $\beta$ -amyirin in comparison with methanol and ethyl acetate extracts.

Using modern techniques of ultrasonic extraction, Wójciak-Kosior et al. [36] determined the optimal conditions for extraction of high concentrations of oleanolic acid. Investigations of the pharmacological activity of oleanolic acid have demonstrated that this compound may be applied in post-*Helicobacter pylori* infection treatment [119]. The antimicrobial activity of oleanolic acid and  $\beta$ -amyirin acetate has been shown to be associated with moderate anti-adhesion properties [31]. Some authors presented oleanolic acid as a potential anti-diabetic compound in plant extracts [120].

Antibacterial and anti-inflammatory activity of  $\beta$ -amyirin has been reported in various studies [121–124].  $\beta$ -amyirin acetate contained in other plant species exhibited cytotoxic and antiproliferative activity [125,126].

### 3.4. Iridoids

The presence of iridoids in the glandular and non-glandular trichomes from the *L. album* subsp. *album* corollas was demonstrated using histochemical assays and quantified as aucubin in phytochemical analyses of the flower extracts. Aucubin in the extract from the *L. album* subsp. *album* corollas were identified for the first time in the present study. Only Adema [47] detected lamioside, i.e., an iridoid classified as an aucubin-like compound, in the leaves of *L. album* and other *Lamium* species, e.g., *L. garganicum*, *L. longiflorum*, *L. amplexicaule*, *L. purpureum*, and *L. maculatum*. Many researchers have described the presence of other iridoids in *L. album* organs, e.g., caryoptoside, lamalbid, and secoiridoid alboside B [127], lamalbid, caryoptoside, shanzhiside methyl ester, and barlerin [44,45], lamiosides A, B, and C and 6''-O- $\beta$ -D-glucopyranosylmartyoside [50], and lamalbid and shanzhiside methyl ester [128,129]. As reported by these authors, most of these nonvolatile glycoside compounds exhibit numerous therapeutic properties. As shown by Zhang et al. [130], aucubin has anti-inflammatory, antioxidative, and antiapoptotic properties and is able to reduce the degree of liver ischemia–reperfusion injury significantly. In turn, the results reported by Zhou et al. [131] indicate an inhibitory effect of aucubin on the proliferation and differentiation of fibroblasts, thereby providing protection against pulmonary fibrosis. In turn, the impact of the presence of aucubin on the effectiveness of cosmetic macroemulsions has been shown by Dąbrowska and Nowak [132]. It was found to diminish transepidermal water loss, increase skin hydration, and improve the values of surface evaluation of living skin and skin macrorelief parameters.

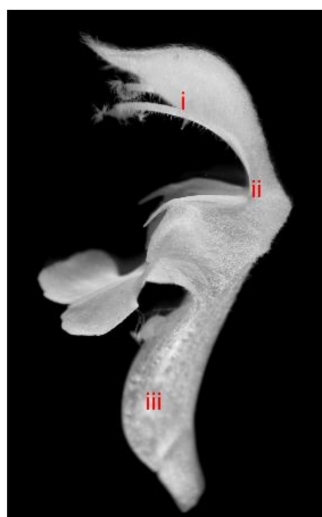
## 4. Materials and Methods

### 4.1. Plant Material

Corollas of *L. album* subsp. *album* with stamens collected in the initial period of anthesis from plants growing in the Botanical Garden of Maria Curie-Skłodowska University in Lublin, Poland (51°26′20.7″ N, 22°51′37.8″ E) were used in the morphological, anatomical, and phytochemical analyses. The anatomical investigations were carried out in May 2019 and 2020, whereas the phytochemical study was carried out in May 2020. The botanical identification was made by comparison with authentic samples deposited in the Department of Botany and Plant Physiology, University of Life Sciences in Lublin and, additionally, by taxonomy specialist Professor Bożena Denisow, who confirmed the correctness of the identification of the taxon. Moreover, botanical identification of plants was performed using “*Illustrierte Flora von Mittel Europa*” [133] and “*A taxonomic revision of Lamium (Lamiaceae)*” [134]. Preliminary observations of the morphology and distribution of glandular and non-glandular trichomes were performed with the use of a stereoscopic microscope STM 800 (Microlab).

### 4.2. Light Microscopy—Handmade Preparations

Corollas and stamens were collected from fresh material of 50 randomly chosen specimens. Using razor blades, handmade cross-sections were made in three areas on the corolla: (i) the edge of the middle part of the upper lip, (ii) the lower part of the upper lip (near the site of fusion with the lower lip), and (iii) the widest point of the corolla tube throat (Figure 11). The plant sections were de-aerated by embedding in a water-glycerine mixture in a 1:1 ratio for 24 h; next, glycerine preparations were made. The stamens were transferred directly on a glass slide and sealed in glycerin (POCH, Gliwice, Poland). The slides were viewed under a light microscope (Nikon, Tokyo, Japan). All types of trichomes present on the abaxial and adaxial corolla surfaces and on the stamens were measured. The height ( $n = 30$ ) and diameter ( $n = 30$ ) at their widest point were measured. Photographic documentation was prepared using a Coolpix 4500 (Nikon, Tokyo, Japan) camera coupled to an Eclipse 400 (Nikon) light microscope.



**Figure 11.** Corolla of *L. album* subsp. *album* with visible sites of section (i–iii).

### 4.3. Scanning Electron Microscopy (SEM) Preparations

Stamens and fragments of corollas of *L. album* subsp. *album* collected from the same sites as described above were fixed in a 4% solution of glutaraldehyde in 0.1 M phosphate buffer (pH 7.0) for 12 h at 4 °C. Next, the plant samples were rinsed with the same buffer four times at 20-min intervals and subsequently fixed in 1% osmium tetroxide ( $w/v$ ) (Johnson Matthey, Royston, UK) for 1 h and dehydrated in an ethanol series (30, 50, 70, 90, 95% ( $v/v$ )) and immersed in anhydrous ethanol (POCH, Gliwice, Poland) twice for

30 min). Then, the plant material was critical-point dried in liquid CO<sub>2</sub> using a K850 (Emitech, Laughton, East Sussex, UK) Critical Point Dryer. The next stage consisted of spraying the samples with gold (thickness of the gold layer of 20 nm) using a sputter coater K550X (Emitech, Ashford, UK). The material was viewed under a Tescan Vega II LMU (Tescan, Brno, Czech Republic) scanning electron microscope at an accelerating voltage of 30 kV [135]. Microphotographs were taken.

#### 4.4. Histochemical Analyses

Fresh free-hand sections of corollas containing glandular and non-glandular trichomes as well as fragments of stamens were subjected to histochemical assays. The following specific reagents were used for detection of the presence of substances: Sudan III (POCH, Gliwice, Poland) [136], Sudan Red B (POCH, Gliwice, Poland) [137] (pp. 874–928) [138], and Sudan Black B (POCH, Gliwice, Poland) [139] for total lipids, Nile Blue (POCH, Gliwice, Poland) for neutral and acidic lipids [140,141], Nadi reagent (POCH, Gliwice, Poland) for terpenes and essential oils [142], Neutral Red (POCH, Gliwice, Poland) for terpenoids (essential oils) [143,144], and Godin reagent (vanillin—sulfuric acid) (POCH, Gliwice, Poland) for iridoids [145]. Six trials/replicates were performed for each reagent. Fresh unfixed and unstained sections of corollas and fragments of stamens were used as a negative control. Photographic documentation was made using a Coolpix 4500 (Nikon) camera coupled to an Eclipse 400 (Nikon) light microscope.

#### 4.5. Phytochemical Analyses

##### 4.5.1. Essential Oil Isolation

The essential oils were obtained from 115 g of fresh and 103 g of dried *L. album* subsp. *album* corollas. The drying of the plant material was conducted in a forced air convection oven for two days at 34 °C. The essential oil of dead-nettle was extracted by hydrodistillation method [146]. Both fresh and dried corollas were distilled in 400 mL of water for 3 h in Deryng-type apparatus. The volume of the essential oil was measured; next, the oil was dried over anhydrous sodium sulfate and stored at 4 °C until gas chromatographic determination of its composition.

##### 4.5.2. Gas Chromatography-Mass Spectrometry (GC-MS)

The chemical composition of the essential oil was analyzed using the GC-MS instrument TRACE GC ULTRA with a POLARIS mass spectrometer Q (Thermo-Finnigan, San Jose, CA, USA). An Equity-5 fused-silica capillary column (30 m × 0.25 mm, 0.25 μm df) (Supelco, Bellefonte, PA, USA) was used. Helium (grade 5.0) was used as a carrier gas. A split-splitless injector was operated in the split mode 1:20 for all chromatographic runs. The temperature of the injector as well as the transfer line temperature was 280 °C. The following temperature programs were applied: 1 min at 35 °C and then a linear temperature increase up to 280 °C at the rate of 4 °C/min. The mass spectrometer was operated in the EI mode at 70 eV; the manifold temperature was 220 °C. The mass spectra were measured in the range 35–400 amu.

Qualitative analysis was carried out via MS spectra, these were compared with the spectra library by means of the NIST MS Search Program (NIST 2.0, 2001), Wiley, and own library, as well as with data available in the literature [63,147–149]. Identity of the compounds was confirmed by their retention indices, whereas the retention indices were determined in relation to a homologous series of *n*-alkanes (C<sub>7</sub>–C<sub>30</sub>) under the same operation conditions.

##### 4.5.3. Ethanolic Extract Preparation for Triterpene Analysis

The ethanolic extract was prepared according to the Polish Pharmacopoeia V monography on natural products [150]. The flowers of *L. album* subsp. *album* were dried in the shade and air conditions. Next, 25 g of finely divided raw material were filtered through a sieve with 0.315-mm pores. An amount of 0.5 g of *L. album* subsp. *album* sample was

weighed and transferred onto a stoppered conical glass flask insert; 50 mL of ethanol was poured into the flask. Next, the flask was placed in an ultrasonic bath (Bandelin, Sonorex, Germany) at 15 °C. The ultrasonic extraction was performed with the use of ultrasounds two times for 15 min. Then, the extract was filtered through a sintered glass funnel (Kisker Biotech GmbH&Co, Steinfurt, Germany). The extract was stored in the refrigerator before further investigations.

#### 4.5.4. Preparation of Organic Extracts for Identification of Triterpenes

Extracts were prepared by heating 20 g of plant material with 300 mL of the solvent (heptane or methanol, or ethyl acetate) for 5 h at 60 °C in reflux conditions. After this time, the extracts were concentrated under reduced pressure at 30 °C. The final volume of the extract was 100 mL.

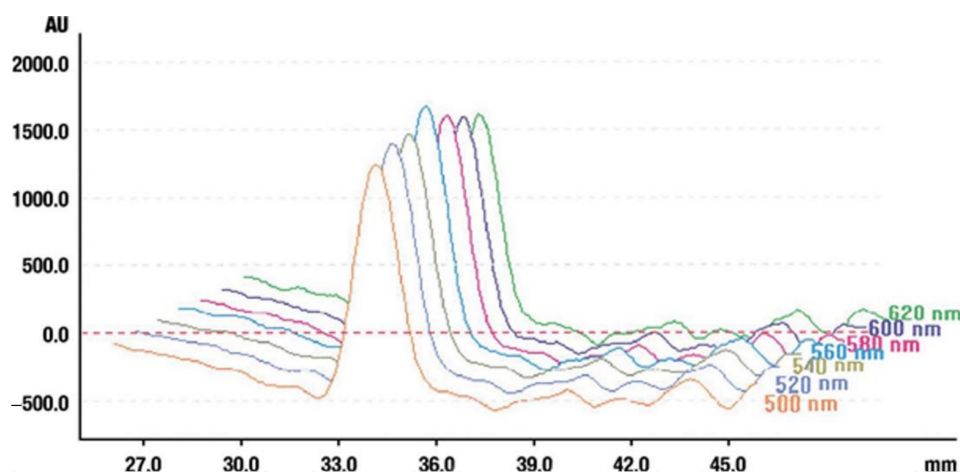
#### 4.5.5. Chromatographic High-Performance Thin Layer Chromatography (HPTLC) Analysis of Some Triterpenes

The chromatographic analysis was performed on 100 × 100 mm precoated glass plates with a 0.25-mm layer of silica-HPTLC Kieselgel Si 60 F254 (Merck, Darmstadt, Germany). Before use, the plates were washed with methanol and dried for 20 min at room temperature for activation. The triterpene standards (Sigma Chemical Co, St. Louis, MO, USA) were dissolved in methanol (0.01% *w/v*). Then, 5- $\mu$ L samples of the triterpene standards (oleanolic acid,  $\beta$ -amyrin, and  $\beta$ -amyrin acetate) were spotted using an AS 30 automatic applicator (Desaga CD 60, Heidelberg, Germany) under nitrogen at 2.5 atm of pressure. Chromatograms were developed in horizontal DS chambers (DS II chamber, Chromdes, Lublin, Poland) on a distance of 85 mm. All chromatographic eluent compositions were chosen experimentally. The mixture of n-hexane: dichloromethane: methanol: distilled water (5.0:6.0:0.4:0.1 *v/v*) turned out to be the best mobile phase for triterpenes. The separated triterpene zones were detected after the derivatization with the mixture of anise aldehyde, glacial acetic acid, methanol, and concentrated sulfuric acid (VI) (0.5:10:85:5 mL).

After spraying the derivative reagent solution and drying, the plates were heated at 100 °C in the oven for 5–10 min. The triterpene zones were detected at VIS or UV (366 nm) light.

#### 4.5.6. Selection of the Analytical Wavelength for Oleanolic Acid

As mentioned earlier, there were problems with the detection of oleanolic acid in the extracts and we had to decide to choose a characteristic wavelength for this compound. Therefore, in the next stage of our experiment, to enhance both the measurement accuracy and detection limit, we applied 0.1 mm of the densitometer slit. The oleanolic acid zone on the chromatographic plate was scanned in the range of 300–680 nm of the light spectrum. The range wavelength of 500–620 nm was promising. Figure 12 shows the selection of the analytical wavelength for oleanolic acid—560 nm. This wavelength was chosen for further investigations.

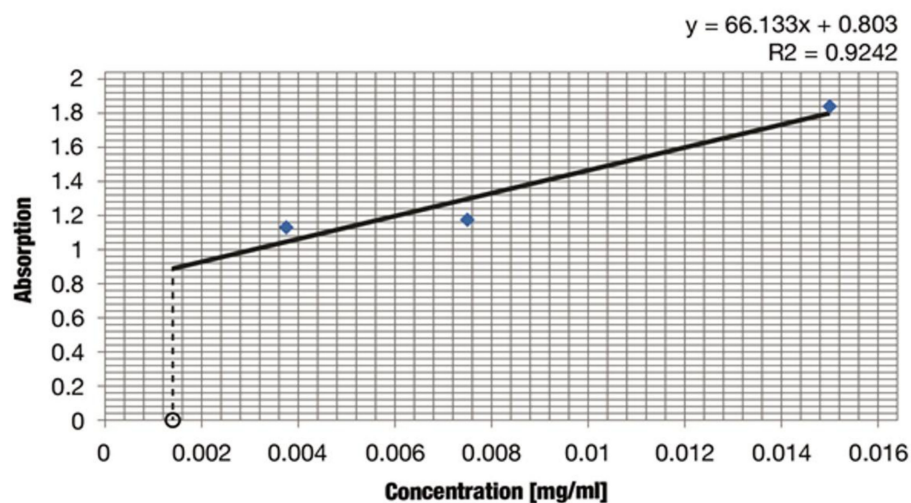


**Figure 12.** Determination of the analytical wavelength for oleanolic acid. Stationary phase silica gel 60 HPTLC plates, mobile phase n-hexane:dichloromethane:methanol:water (4:5:0.6:0.1 v/v). Densitometric detection at 560 nm after derivatization with anise aldehyde.

#### 4.5.7. Spectrophotometric—Quantitative Analysis of Iridoids

Quantitative analysis of aucubin was performed according to Polish Pharmacopoeia VI [146] and literature data [151].

Aucubin quantitative analysis was performed with the use of the spectrophotometric method. To build the calibration curve, aucubin stock solutions were prepared with the following concentrations: 0.015 mg/mL, 0.0075 mg/mL, and 0.00375 mg/mL. An amount of 0.5 mL from each solution was transferred to three test tubes. Then, 1 mL of methanol, 2 mL of a 4-dimethylaminebenzaldehyde solution containing 0.5 mol/L of hydrochloric acid (Ehrlich reagent), and 1.5 mL of distilled water were added to the test tube. The mixture was heated for 3 min in a boiling water bath (EkoTerm TW 20, Julabo, Schwalbach, Germany). Next, the test tube contents were transferred to a 10-mL flask and diluted to the volume with distilled water. After 15 min, the absorbance of the blue solutions was measured using a Genesys 20 spectrophotometer (Thermo Fisher Scientific, Spectronic, Texas City, TX, USA) at 590 nm as the analytical wavelength. The experiments were triplicated. The average results were applied to prepare the calibration curve (Figure 13).



**Figure 13.** Determination of aucubin content in mg/mL in the ethanolic extract from dried *Lamium album* subsp. *album* flowers.

## 5. Conclusions

To sum up, we conducted a complete pharmacognostical analysis of the corolla in *L. album* subsp. *album* to determine the distribution, content, and composition of essential oils as well as phytochemical analyses of triterpenes and iridoids. We have shown that these active substances are mainly located in corolla epidermis cells and various types of trichomes. The content of essential oils in fresh and dried flowers is similar and relatively low. Three triterpenoids were identified in the flowers, i.e., oleanolic acid,  $\beta$ -amyrin, and  $\beta$ -amyrin acetate. The presence of  $\beta$ -amyrin acetate was demonstrated for the first time. Similarly, the presence of iridoid aucubin in the extract from *L. album* subsp. *album* corollas were identified for the first time. *L. album* is a common plant in the flora of Europe and a large part of Asia. It is characterized by abundant and long flowering, which lasts from April to September in Poland; hence, its flowers are a valuable and easily available raw material with nutritional, antioxidant, and anti-allergic effects. Flowers containing various active compounds, e.g., lipophilic compounds and iridoids, are not only used in phytotherapy and cosmetology but can also be recommended as potential supplements in human nutrition and tea additives or food decorations. The consumption of a variety of natural compounds is consistent with the principles of a healthy lifestyle.

**Author Contributions:** Conceptualization, E.W.-C. and A.M.-W.; Methodology, E.W.-C., R.R., A.S., M.D. and A.K.; Formal analysis, B.P., E.W.-C., R.R., A.S., M.D. and A.K.; Investigation, A.K., A.S., M.D., K.P.-W. and B.S.; Data curation, A.S. and B.P.; Writing—original draft preparation, E.W.-C., B.P., A.M.-W. and A.K.; Visualization, A.S., M.D., A.K. and A.M.-W.; Funding acquisition, A.K., A.S. and R.R. All authors have read and agreed to the published version of the manuscript.

**Funding:** This research was funded by THE POLAND'S MINISTRY OF SCIENCE AND HIGHER EDUCATION as part of the statutory activities of the Department of Botany and Plant Physiology, University of Life Sciences in Lublin (project LKR/S/49/2020RiO) and the Department of General Ophthalmology, Medical University of Lublin (project DS 180).

**Institutional Review Board Statement:** Not applicable.

**Informed Consent Statement:** Not applicable.

**Conflicts of Interest:** The authors declare no conflict of interest.

**Sample Availability:** Sample of the compounds are not available from authors.

## References

1. Werker, E.; Putievsky, E.; Ravid, U.; Dudai, N.; Katzir, I. Glandular Hairs and Essential Oil in Developing Leaves of *Ocimum basilicum* L. (Lamiaceae). *Ann. Bot.* **1993**, *71*, 43–50. [[CrossRef](#)]
2. Bergougnoux, V.; Caissard, J.C.; Jullien, F.; Magnard, J.L.; Scalliet, G.; Cock, J.M.; Baudino, S. Both the adaxial and abaxial epidermis layers of the rose petal emit volatile scent compounds. *Planta* **2007**, *226*, 853–866. [[CrossRef](#)]
3. Vogel, S. *The Role of Scent Glands in Pollination. On the Structure and Function of Osmophores*; Amerind Publishing: New Delhi, India, 1990.
4. Tölke, E.D.; Capelli, N.V.; Pastori, T.; Alencar, A.C.; Cole, T.C.H.; Demarco, D. Diversity of Floral Glands and Their Secretions in Pollinator Attraction. In *Co-Evolution of Secondary Metabolites*; Mérillon, J.-M., Ramawat, K.G., Eds.; Springer: Berlin/Heidelberg, Germany, 2020. [[CrossRef](#)]
5. Flamini, G.; Cioni, P.L.; Morelli, I. Composition of the essential oils and in vivo emission of volatiles of four *Lamium* species from Italy: *L. purpureum*, *L. hybridum*, *L. bifidum* and *L. amplexicaule*. *Food Chem.* **2005**, *91*, 63–68. [[CrossRef](#)]
6. Madeira, S.V.F.; Rabelo, M.; Soares, P.M.G.; Souza, E.P.; Meireles, A.V.P.; Montenegro, C.; Lima, R.F.; Assreuy, A.M.S.; Criddle, D.N. Temporal variation of chemical composition and relaxant action of the essential oil of *Ocimum gratissimum* L. (Labiatae) on guinea-pig ileum. *Phytomedicine* **2005**, *12*, 506–509. [[CrossRef](#)]
7. Barocelli, E.; Calcina, F.; Chiavarini, M.; Impicciatore, M.; Bruni, R.; Bianchi, A.; Ballabeni, V. Antinociceptive and gastroprotective effects of inhaled and orally administered *Lavandula hybrida* Reverchon “Grosso” essential oil. *Life Sci.* **2004**, *76*, 213–223. [[CrossRef](#)] [[PubMed](#)]
8. Król, S.K.; Kapka-Skrzypczak, L. Aktywność farmakologiczna olejków eterycznych i ich składników w leczeniu schorzeń układu pokarmowego. *Med. Ogólna Nauk. Zdrowiu* **2011**, *17*, 202–205.
9. Knudsen, J.T.; Eriksson, R.; Gershenzon, J.; Stahl, B. Diversity and distribution of floral scent. *Bot. Rev.* **2006**, *72*, 1–120. [[CrossRef](#)]
10. Schiestl, F.P. The evolution of floral scent and insect chemical communication. *Ecol. Lett.* **2010**, *13*, 643–656. [[CrossRef](#)]



11. Farré-Armengol, G.; Filella, I.; Llusia, J.; Peñuelas, J. Floral volatile organic compounds: Between attraction and deterrence of visitors under global change. *Perspect. Plant Ecol. Evol. Syst.* **2013**, *15*, 56–67. [[CrossRef](#)]
12. Antoń, S.; Kamińska, M.; Stpiczyńska, M. Comparative structure of the osmophores in the flower of *Stanhopea graveolens* Lindley and *Cynoches chlorochilon* Klotzsch (Orchidaceae). *Acta Agrobot.* **2012**, *65*, 11–22. [[CrossRef](#)]
13. Sulborska, A.; Dmitruk, M.; Konarska, A.; Weryszko-Chmielewska, E. Adaptations of *Lamium album* L. flowers to pollination by Apoidea. *Acta Sci. Pol. Hortorum Cultus* **2014**, *13*, 31–43.
14. Bodnarčuk, L.I.; Solomacha, T.D.; Illjaš, A.M.; Solomacha, V.D.; Gorovyj, V.G. *Atlas Medonosnych Roslyn Ukrainy*; Urožaj: Kyiv, Ukraine, 1993; p. 268.
15. Kumar, A.; Memo, M.; Mastinu, A. Plant behaviour: An evolutionary response to the environment? *Plant Biol.* **2020**, *22*, 961–970. [[CrossRef](#)] [[PubMed](#)]
16. Cole, M.D. The Significance of Terpenoids in the Labiatae. In *Advances in Labiatae Science*; Harley, R.M., Reynolds, T., Eds.; Royal Botanic Gardens, Kew: Richmond, UK, 1992; pp. 315–324.
17. Birkett, M.A.; Al Abassi, S.; Krober, T.; Chamberlain, K.; Hooper, A.M.; Guerin, P.M.; Petterson, J.; Pickett, J.A.; Slade, R.; Wadhams, L.J. Antiectoparasit activity of the gum resin, gum hagggar, from the East Africa plant, *Commiphora holtziana*. *Phytochemistry* **2008**, *69*, 1710–1719. [[CrossRef](#)]
18. Yordanova, Z.P.; Zhiponova, M.K.; Iakimova, E.T.; Dimitrova, M.A.; Kapchina-Toteva, V.M. Revealing the reviving secret of the white dead nettle (*Lamium album* L.). *Phytochem. Rev.* **2014**, *13*, 375–389. [[CrossRef](#)]
19. Ghule, B.; Palve, S.; Rath, L.; Yeole, P. Validated HPTLC method for simultaneous determination of shanzhiside methyl ester and barlerin in *Barleria prionitis*. *JPC J. Planar Chromatogr. Mod. TLC* **2012**, *25*, 426–432. [[CrossRef](#)]
20. Cao, J.; Yu, H.; Wu, Y.; Wang, X. Occurrence and biological activities of phenylpropionyl iridoids. *Mini Rev. Med. Chem.* **2019**, *19*, 292–309. [[CrossRef](#)]
21. Salehi, B.; Armstrong, L.; Rescigno, A.; Yeskaliyeva, B.; Seitimova, G.; Beyatli, A.; Sharifi-Rad, J. *Lamium plants*—A comprehensive review on health benefits and biological activities. *Molecules* **2018**, *24*, 1913. [[CrossRef](#)]
22. Mahdavi, A.; Moradi, P.; Mastinu, A. Variation in terpene profiles of *Thymus vulgaris* in water deficit stress response. *Molecules* **2020**, *25*, 1091. [[CrossRef](#)]
23. Holopainen, J.K.; Gershenzon, J. Multiple stress factors and the emission of plant VOCs. *Trends Plant Sci.* **2010**, *15*, 176–184. [[CrossRef](#)]
24. Loreto, F.; Ciccioli, P.; Cecinato, A.; Brancaleoni, E.; Frattoni, M.; Tricoli, D. Influence of Environmental Factors and Air Composition on the Emission of [alpha]-Pinene from *Quercus ilex* Leaves. *Plant Physiol.* **1996**, *110*, 267–275. [[CrossRef](#)]
25. Duhl, T.; Helmig, D.; Guenther, A. Sesquiterpene emissions from vegetation: A review. *Biogeosciences* **2008**, *5*, 761–777. [[CrossRef](#)]
26. Morteza-Semnani, K.; Saedi, M.; Akbarzadeh, M. Chemical composition of the essential oil of the flowering aerial parts of *Lamium album* L. *J. Essent. Oil Bear. Plants* **2016**, *19*, 773–777. [[CrossRef](#)]
27. Mickiene, R.; Bakutis, B.; Maruska, A.; Ragazinskiene, O.; Kaskoniene, V. Effect of volatile secondary metabolites of *Monarda didyma* L., *Lamium album* L. and *Myrrhis odorata* L. Plants against micromycetes of indoor environments of animals. *Veterinariia* **2014**, *68*, 48–54.
28. Kovalvoya, A.; Ilyina, T.; Kolesnik, Y. Study of component composition of the essential oil of leaves *Lamium album*. *Pharmacology* **2013**, *1*, 80–82.
29. Alipieva, K.; Evstatieva, L.; Handjieva, N.; Popov, S. Comparative analysis of the composition of flower volatiles from *Lamium* L. species and *Lamiastrum galeobdolon* Heist. ex Fabr. *Z. Nat. C* **2003**, *58*, 779–782. [[CrossRef](#)]
30. Dzubak, P.; Hajdich, M.; Vydra, D.; Hustova, A.; Kvasnica, M.; Biedermann, D.; Markova, L.; Urbanc, M.; Sarek, J. Pharmacological activities of natural triterpenoids and their therapeutic implications. *Nat. Prod. Rep.* **2006**, *23*, 394–411. [[CrossRef](#)]
31. Kiplimo, J.J.; Koorbanally, N.A.; Chenia, H. Triterpenoids from *Vernonia auriculifera* Hiern exhibit antimicrobial activity. *Afr. J. Pharm. Pharmacol.* **2011**, *5*, 1150–1156. [[CrossRef](#)]
32. Paduch, R.; Kandefor-Szerszeń, M. Antitumor and antiviral activity of pentacyclic triterpenes. *Mini Rev. Org. Chem.* **2014**, *11*, 262. [[CrossRef](#)]
33. Ghiulai, R.; Roșca, O.J.; Antal, D.S.; Mioc, M.; Mioc, A.; Racoviceanu, R.; Șoica, C. Tetracyclic and Pentacyclic Triterpenes with High Therapeutic Efficiency in Wound Healing Approaches. *Molecules* **2020**, *25*, 5557. [[CrossRef](#)]
34. Jian, T.; Ding, X.; Li, J.; Wu, Y.; Ren, B.; Li, J.; Lv, H.; Chen, J.; Li, W. Triterpene Acids of Loquat Leaf Improve Inflammation in Cigarette Smoking Induced COPD by Regulating AMPK/Nrf2 and NFκB Pathways. *Nutrients* **2020**, *12*, 657. [[CrossRef](#)] [[PubMed](#)]
35. Wójciak-Kosior, M.; Krzaczek, T.; Matysik, G.; Skalska, A. HPTLC-densitometric method of determination of oleanolic acid in the *Lamii albi flos*. *J. Sep. Sci.* **2005**, *28*, 2139–2143. [[CrossRef](#)]
36. Wójciak-Kosior, M.; Sowa, I.; Kocjan, R.; Nowak, R. Effect of different extraction techniques on quantification of oleanolic and ursolic acid in *Lamii albi flos*. *Ind. Crop. Prod.* **2013**, *44*, 373–377. [[CrossRef](#)]
37. Paduch, R.; Wójciak-Kosior, M.; Matysik, G. Investigation of biological activity of *Lamii albi flos* extracts. *J. Ethnopharmacol.* **2007**, *110*, 69–75. [[CrossRef](#)]
38. Kelayeh, T.P.S.; Abedinzade, M.; Ghorbani, A. A review on biological effects of *Lamium album* (white dead nettle) and its components. *J. Herbmed. Pharmacol.* **2019**, *8*, 185–193. [[CrossRef](#)]
39. Eigtved, P.; Jensen, S.R.; Nielsen, B.J. A Novel Iridoid Glucoside Isolated from *Lamium album* L. *Acta Chem. Scand. B* **1974**, *28*, 85–91. [[CrossRef](#)]

40. Damtoft, S. Iridoid glucosides from *Lamium album*. *Phytochemistry* **1992**, *31*, 175–178. [CrossRef]
41. Yalcin, F.N.; Kaya, D. Ethnobotany, pharmacology and phytochemistry of the genus *Lamium* (Lamiaceae). *FABAD J. Pharm. Sci.* **2006**, *31*, 43–52.
42. Budzianowski, J.; Skrzypczak, L. Phenylpropanoid esters from *Lamium album* flowers. *Phytochemistry* **1995**, *38*, 997–1001. [CrossRef]
43. Alipieva, K.I.; Taskova, R.M.; Evstatieva, L.N.; Handjieva, N.V.; Popov, S.S. Benzoxazinoids and iridoid glucosides from four *Lamium* species. *Phytochemistry* **2003**, *64*, 1413–1417. [CrossRef]
44. Alipieva, K.I.; Taskova, R.M.; Jensen, S.R.; Handjieva, N.V. Iridoid glucosides from *Lamium album* and *Lamium maculatum* (Lamiaceae). *Biochem. Syst. Ecol.* **2006**, *34*, 88–91. [CrossRef]
45. Alipieva, K.; Kokubun, T.; Taskova, R.; Evstatieva, L.; Handjieva, N. LC-ESI-MS analysis of iridoid glucosides in *Lamium* species. *Biochem. Syst. Ecol.* **2007**, *35*, 17–22. [CrossRef]
46. Ersöz, T.; Kaya, D.; Yalcin, F.N.; Kazaz, C.; Palaska, E.; Gotfredsen, C.H.; Çaliş, İ. Iridoid glucosides from *Lamium garganicum* subsp. *laevigatum*. *Turk. J. Chem.* **2007**, *31*, 155–162.
47. Adema, F. Iridoid glucosides of species of *Lamium* and some related genera. *Acta Bot. Neerl.* **1968**, *17*, 423–430. [CrossRef]
48. Zhang, H.; Rothwangl, K.; Mesecar, A.D.; Sabahi, A.; Rong, L.; Fong, H.H. Lamiridosins, hepatitis C virus entry inhibitors from *Lamium album*. *J. Nat. Prod.* **2009**, *72*, 2158–2162. [CrossRef]
49. Pashazadeh, M.; Rezaei, A. The Effect of Chornic Oral *Lamium album* Consumption on Blood Levels of Glucose and Lipids in Alloxan-Induced Diabetic Rats. *Int. J. Pharm. Anal.* **2013**, *4*, 21.
50. Czerwińska, M.E.; Świerczewska, A.; Woźniak, M.; Kiss, A.K. Bioassay-Guided Isolation of Iridoids and Phenylpropanoids from Aerial Parts of *Lamium album* and Their Anti-inflammatory Activity in Human Neutrophils. *Planta Med.* **2017**, *83*, 1011–1019. [CrossRef]
51. Matkowski, A.; Piotrowska, M. Antioxidant and free radical scavenging activities of some medicinal plants from the Lamiaceae. *Fitoterapia* **2006**, *77*, 346–353. [CrossRef]
52. Available online: <https://cosmetics.specialchem.com/inci/lamium-album-extract> (accessed on 15 April 2021).
53. Facciola, S. *Cornucopia II: A Source Book of Edible Plants*; Kampong Publications: Vista, CA, USA, 1998.
54. Batsatsashvili, K.; Mehdiyeva, N.P.; Kikvidze, Z.; Khutsishvili, M.; Maisaia, I.; Sikharulidze, S.; Tchelidze, D.; Alizade, V.M.; Paniagua Zambrana, N.Y.; Bussmann, R.W. *Lamium album* L. Lamiaceae. In *Ethnobotany of the Caucasus*. *European Ethnobotany*; Bussmann, R., Ed.; Springer: Basel, Switzerland, 2016. [CrossRef]
55. Bartram, T. *Bartram's Encyclopedia of Herbal Medicine*; Little Brown: London, UK, 1998.
56. Łuczaj, L. *Dzika Kuchnia*. *Wyd.; Nasza Księgarnia*: Warszawa, Polska, 2013.
57. Hatfield, G. *Hatfield's Herbal: The Curious Stories of Britain's Wild Plants*; Penguin Books: London, UK, 2007.
58. Sulborska, A.; Konarska, A.; Matysik-Woźniak, A.; Dmitruk, M.; Weryszko-Chmielewska, E.; Skalska-Kamińska, A.; Rejdak, R. Phenolic Constituents of *Lamium album* L. subsp. *album* Flowers: Anatomical, Histochemical, and Phytochemical Study. *Molecules* **2020**, *25*, 6025. [CrossRef]
59. Celep, F.; Kahraman, A.; Atalay, Z.; Dogan, M. Morphology, anatomy and trichome properties of *Lamium truncatum* Boiss. (Lamiaceae) and their systematic implications. *Aust. J. Crop Sci.* **2011**, *5*, 147–153.
60. Özdemir, C.; Baran, P. Morphological, anatomical and cytological investigation on alpine *Lamium cymbalariaifolium* endemic to Turkey. *Aust. J. Crop Sci.* **2012**, *6*, 532–540.
61. Atalay, Z.; Celep, F.; Bara, F.; Doğan, M. Systematic significance of anatomy and trichome morphology in *Lamium* (Lamioideae; Lamiaceae). *Flora* **2016**, *225*, 60–75. [CrossRef]
62. Zvezdina, E.V.; Dayronas, J.V.; Bochkareva, I.I.; Zilfikarov, I.N.; Babaeva, E.Y.; Ferubko, E.V.; Ibragimov, T.A. Members of the family Lamiaceae Lindl. as sources of medicinal plant raw materials to obtain neurotropic drugs. *Pharm. Pharmacol.* **2020**, *8*, 4–28. [CrossRef]
63. Adams, R.P. *Identification of Essential Oil Components by Gas Chromatography/Mass Spectroscopy*, 4th ed.; Allured Pub Corp.: Carol Stream, IL, USA, 2007.
64. Sharifi-Rad, J.; Sureda, A.; Tenore, G.C.; Daglia, M.; Sharifi-Rad, M.; Valussi, M.; Tundis, R.; Sharifi-Rad, M.; Loizzo, M.R.; Ademiluyi, A.O.; et al. Biological Activities of Essential Oils: From Plant Chemoecology to Traditional Healing Systems. *Molecules* **2017**, *22*, 70. [CrossRef]
65. Huang, S.S.; Kirchoff, B.K.; Liao, J.P. The capitate and peltate glandular trichomes in *Lavandula pinnata* L. (Lamiaceae): Histochemistry, ultrastructure and secretion. *J. Torrey Bot. Soc.* **2008**, *135*, 155–167. [CrossRef]
66. Jia, P.; Gao, T.; Xin, H. Changes in structure and histochemistry of glandular trichomes of *Thymus quinquecostatus* Celak. *Sci. World J.* **2012**, 187261. [CrossRef]
67. Giuliani, C.; Bini, L.M. Insight into the structure and chemistry of glandular trichomes of Labiatae, with emphasis on subfamily Lamioideae. *Plant Syst. Evol.* **2008**, *276*, 199–208. [CrossRef]
68. Naidoo, Y.; Kasim, N.; Heneidak, S.; Nicholas, A.; Naidoo, G. Foliar secretory trichomes of *Ocimum obovatum* (Lamiaceae): Micromorphological structure and histochemistry. *Plant Syst. Evol.* **2013**, *299*, 873–885. [CrossRef]
69. Dmitruk, M.; Sulborska, A.; Żuraw, B.; Stawiarz, E.; Weryszko-Chmielewska, E. Sites of secretion of bioactive compounds in leaves of *Dracocephalum moldavica* L.: Anatomical, histochemical, and essential oil study. *Braz. J. Bot.* **2019**, *42*, 701–715. [CrossRef]

70. Ascensão, L.; Mota, L.; Castro, M.D.M. Glandular Trichomes on the Leaves and Flowers of *Plectranthus ornatus*: Morphology, Distribution and Histochemistry. *Ann. Bot.* **1999**, *84*, 437–447. [[CrossRef](#)]
71. Corsi, G. Glandular Hairs of *Salvia officinalis*: New Data on Morphology, Localization and Histochemistry in Relation to Function. *Ann. Bot.* **1999**, *84*, 657–664. [[CrossRef](#)]
72. Venditti, A.; Bianco, A.; Quassinti, L.; Bramucci, M.; Lupidi, G.; Damiano, S.; Papa, F.; Vittori, S.; Bini, L.M.; Giuliani, C.; et al. Phytochemical Analysis, Biological Activity, and Secretory Structures of *Stachys annua* (L.) L. subsp. *annua* (Lamiaceae) from Central Italy. *Chem. Biodivers.* **2015**, *12*, 1172–1183. [[CrossRef](#)]
73. Venditti, A.; Bianco, A.; Frezza, C.; Conti, F.; Bini, L.M.; Giuliani, C.; Bramucci, M.; Quassinti, L.; Damiano, S.; Lupidi, G.; et al. Essential oil composition, polar compounds, glandular trichomes and biological activity of *Hyssopus officinalis* subsp. *aristatus* (Godr.) Nyman from central Italy. *Ind. Crop. Prod.* **2015**, *77*, 253–363. [[CrossRef](#)]
74. Combrinck, S.; Du Plooy, G.W.; McCrindle, R.I.; Botha, B.M. Morphology and Histochemistry of the Glandular Trichomes of *Lippia scaberrima* (Verbenaceae). *Ann. Bot.* **2007**, *99*, 1111–1119. [[CrossRef](#)]
75. Sacchetti, G.; Romagnoli, C.; Nicoletti, M.; Di Fabio, A.; Bruni, A.; Poli, F. Glandular trichomes of *Calceolaria adscendens* Lidl. (Scrophulariaceae): Histochemistry, development and ultrastructure. *Ann. Bot.* **1999**, *83*, 87–92. [[CrossRef](#)]
76. Ventrella, M.C.; Marinho, C.R. Morphology and histochemistry of glandular trichomes of *Cordia verbenacea* DC. (Boraginaceae) leaves. *Br. J. Bot.* **2008**, *31*, 457–467. [[CrossRef](#)]
77. Haratym, W.; Weryszko-Chmielewska, E. Ultrastructural and histochemical analysis of glandular trichomes of *Marrubium vulgare* L. (Lamiaceae). *Flora* **2017**, *231*, 11–20. [[CrossRef](#)]
78. Evert, R.F. *Esau's Plant Anatomy*, 3rd ed.; Wiley-Interscience: Hoboken, NJ, USA, 2006.
79. Hejnowicz, Z. *Anatomia i Histogeneza Roślin Naczyniowych*; Wydawnictwo Naukowe PWN: Warszawa, Poland, 2018.
80. Tozin, L.R.S.; Silva, C.M.; Rodrigues, T.M. Non-glandular trichomes in Lamiaceae and Verbenaceae species: Morphological and histochemical features indicate more than physical protection. *N. Z. J. Bot.* **2016**, *54*, 446–457. [[CrossRef](#)]
81. Asekun, O.T.; Grierson, D.S.; Afolayan, A.J. Effects of drying methods on the quality and quantity of the essential oil of *Mentha longifolia* L. subsp. *capensis*. *Food Chem.* **2007**, *101*, 995–998. [[CrossRef](#)]
82. Figiel, A.; Szumny, A.; Gutiérrez-Ortiz, A.; Carbonell-Barrachina, Á.A. Composition of oregano essential oil (*Origanum vulgare*) as affected by drying method. *J. Food Eng.* **2010**, *98*, 240–247. [[CrossRef](#)]
83. Turek, C.; Stintzing, F.C. Stability of essential oils: A review. *Compr. Rev. Food Sci. Food Saf.* **2013**, *12*, 40–53. [[CrossRef](#)]
84. Lewicki, P.P.; Pawlak, G. Effect of drying on microstructure of plant tissue. *Dry. Technol.* **2003**, *12*, 657–683. [[CrossRef](#)]
85. Zheljzakov, V.D.; Astatkie, T.; Zhalnov, I.; Georgieva, T.D. Method for attaining rosemary essential oil with differential composition from dried or fresh material. *J. Oleo Sci.* **2015**, *64*, ess14258. [[CrossRef](#)]
86. Mashkani, M.R.D.; Larijani, K.; Mehrafarin, A.; Badi, H.N. Changes in the essential oil content and composition of *Thymus daenensis* Celak. under different drying methods. *Ind. Crop. Prod.* **2018**, *112*, 389–395. [[CrossRef](#)]
87. Silva, S.G.; da Costa, R.A.; de Oliveira, M.S.; da Cruz, J.N.; Figueiredo, P.L.B.; Brasil, D.D.S.B.; Andrade, E.H.D.A. Chemical profile of *Lippia thymoides*, evaluation of the acetylcholinesterase inhibitory activity of its essential oil, and molecular docking and molecular dynamics simulations. *PLoS ONE* **2019**, *14*, e0213393. [[CrossRef](#)]
88. Kapchina-Toteva, V.; Dimitrova, M.A.; Stefanova, M.; Koleva, D.; Kostov, K.; Yordanova, Z.P.; Stefanov, D.; Zhiponova, M.K. Adaptive changes in photosynthetic performance and secondary metabolites during white dead nettle micropropagation. *J. Plant Physiol.* **2014**, *171*, 1344–1353. [[CrossRef](#)] [[PubMed](#)]
89. Pudziuvelyte, L.; Stankevicius, M.; Maruska, A.; Petrikaite, V.; Ragazinskiene, O.; Draksiene, G.; Bernatoniene, J. Chemical composition and anticancer activity of *Elsholtzia ciliata* essential oils and extracts prepared by different methods. *Ind. Crop. Prod.* **2017**, *107*, 90–96. [[CrossRef](#)]
90. Beigi, M.; Toriki-Harchegani, M.; Ghasemi Pirbalouti, A. Quantity and chemical composition of essential oil of peppermint (*Mentha × piperita* L.) leaves under different drying methods. *Int. J. Food Prop.* **2018**, *21*, 267–276. [[CrossRef](#)]
91. Raffo, A.; Mozzanini, E.; Nicoli, S.F.; Lupotto, E.; Cervelli, C. Effect of light intensity and water availability on plant growth, essential oil production and composition in *Rosmarinus officinalis* L. *Eur. Food Res. Technol.* **2020**, *246*, 167–177. [[CrossRef](#)]
92. Castelo, A.V.M.; Del Menezzi, C.H.S.; Resck, I.S. Seasonal variation in the yield and the chemical composition of essential oils from two Brazilian natives arbustive species. *J. Appl. Sci.* **2012**, *12*, 753–760. [[CrossRef](#)]
93. Pljevljakušić, D.; Janković, T.; Jelčić, S.; Novaković, M.; Menković, N.; Beatović, D.; Dajić-Stevanović, Z. Morphological and chemical characterization of *Arnica montana* L. under different cultivation models. *Ind. Crop. Prod.* **2014**, *52*, 233–244. [[CrossRef](#)]
94. Avci, A.B.; Giachino, R.R.A. Harvest stage effects on some yield and quality characteristics of lemon balm (*Melissa officinalis* L.). *Ind. Crop. Prod.* **2016**, *88*, 23–27. [[CrossRef](#)]
95. Shams, M.; Ramezani, M.; Esfahan, S.Z.; Esfahan, E.Z.; Dursun, A.; Yildirim, E. Effects of climatic factors on the quantity of essential oil and dry matter yield of coriander (*Coriandrum sativum* L.). *J. Sci. Technol.* **2016**, *9*, 1–4. [[CrossRef](#)]
96. Tawfeeq, A.; Culham, A.; Davis, F.; Reeves, M. Does fertilizer type and method of application cause significant differences in essential oil yield and composition in rosemary (*Rosmarinus officinalis* L.)? *Ind. Crop. Prod.* **2016**, *88*, 17–22. [[CrossRef](#)]
97. García-Caparrós, P.; Romero, M.J.; Llanderal, A.; Cermeño, P.; Lao, M.T.; Segura, M.L. Effects of drought stress on biomass, essential oil content, nutritional parameters, and costs of production in six Lamiaceae species. *Water* **2019**, *11*, 573. [[CrossRef](#)]
98. Salman, M.; Abdel-Hameed, E.S.S.; Bazaid, S.A.; Dadi, M.M. Chemical composition for hydrodistillation essential oil of *Mentha longifolia* by gas chromatography-mass spectrometry from north regions in kingdom of Saudi Arabia. *Pharm. Chem.* **2015**, *7*, 34–40.

99. Sharopov, F.S.; Wink, M.; Khalifaev, D.R.; Zhang, H.; Dosoky, N.S.; Setzer, W.N. Composition and bioactivity of the essential oil of *Melissa officinalis* L. growing wild in Tajikistan. *Int. J. Tradit. Nat. Med.* **2013**, *2*, 86–96.
100. Martins, T.G.T.; Rosa, P.V.S.; Arruda, M.O.; Dias, A.A.S.; de Araújo Neto, A.P.; Carvalho, A.M.A.S.; Everton, G.O. Larvicidal activity of microparticles of *Melissa officinalis* L. essential oil (Lamiaceae) against *Aedes aegypti* (Diptera, Culicidae). *Res. Soc. Dev.* **2021**, *10*, e35710111166. [[CrossRef](#)]
101. Petrović, S.; Ušjak, L.; Milenković, M.; Arsenijević, J.; Drobac, M.; Drndarević, A.; Niketić, M. *Thymus dacicus* as a new source of antioxidant and antimicrobial metabolites. *J. Funct. Foods* **2017**, *28*, 114–121. [[CrossRef](#)]
102. Dorman, H.J.D.; Deans, S.G. Antimicrobial agents from plants: Antibacterial activity of plant volatile oils. *J. Appl. Microbiol.* **2000**, *88*, 308–316. [[CrossRef](#)]
103. Chizzola, R. Regular monoterpenes and sesquiterpenes (essential oils). In *Natural Products*; Ramawat, K.G., Mérillon, J.M., Eds.; Springer: Berlin/Heidelberg, Germany, 2013; pp. 2973–3008. [[CrossRef](#)]
104. Mimica-Dukic, N.; Orcic, D.; Lesjak, M.; Sibul, F. Essential oils as powerful antioxidants: Misconception or scientific fact? In *Medicinal and Aromatic Crops: Production, Phytochemistry and Utilization*; American Chemical Society: Washington, DC, USA, 2016; pp. 187–208. [[CrossRef](#)]
105. Nickavar, B.; Mojab, F.; Bamasian, S. Volatile components from aerial parts of *Lamium amplexicaule* from Iran. *J. Essent. Oil Bear. Plants* **2008**, *11*, 36–40. [[CrossRef](#)]
106. Hu, Y.; Zhou, Y.J.; Bao, J.; Huang, L.; Nielsen, J.; Krivoruchko, A. Metabolic engineering of *Saccharomyces cerevisiae* for production of germacrene A, a precursor of beta-elemene. *J. Ind. Microb. Biotechnol.* **2017**, *44*, 1065–1072. [[CrossRef](#)]
107. Wang, Y.; Jiang, Z.T.; Li, R. Antioxidant Activity, Free Radical Scavenging Potential and Chemical Composition of *Litsea cubeba* Essential Oil. *J. Essent. Oil Bear. Plants* **2012**, *15*, 134–143. [[CrossRef](#)]
108. Casiglia, S.; Bruno, M.; Bramuccib, M.; Quassintib, L.; Lupidic, D.; Fiorinic, D.; Maggi, F. *Kundmannia sicula* (L.) DC: A rich source of germacrene D. *J. Essent. Oil Res.* **2017**, *29*, 437–442. [[CrossRef](#)]
109. El-Sayed, Z.I.A. Chemical composition, antimicrobial and insecticidal activities of the essential oil of *Lamium maculatum* L. grown in Egypt. *Biosci. Biotechnol. Res. Asia* **2008**, *5*, 65–72.
110. Yang, D.; Michel, L.; Chaumont, J.P.; Millet-Clerc, J. Use of caryophyllene oxide as an antifungal agent in an in vitro experimental model of onychomycosis. *Mycopathologia* **2000**, *148*, 79–82. [[CrossRef](#)] [[PubMed](#)]
111. Oh, M.S.; Yang, J.Y.; Kim, M.G.; Lee, H.S. Acaricidal activities of  $\beta$ -caryophyllene oxide and structural analogues derived from *Psidium cattleianum* oil against house dust mites. *Pest Manag. Sci.* **2014**, *70*, 757–762. [[CrossRef](#)]
112. Nararak, J.; Sathantriphop, S.; Kongmee, M.; Mahiou-Leddet, V.; Ollivier, E.; Manguin, S.; Chareonviriyaphap, T. Excito-repellent activity of  $\beta$ -caryophyllene oxide against *Aedes aegypti* and *Anopheles minimus*. *Acta Trop.* **2019**, *197*, 105030. [[CrossRef](#)]
113. Park, K.-R.; Nam, D.; Yun, H.-M.; Lee, S.-G.; Jang, H.-J.; Sethi, G.; Cho, S.K.; Ahn, K.S.  $\beta$ -Caryophyllene oxide inhibits growth and induces apoptosis through the suppression of PI3K/Akt/mTOR/S6K1 pathways and ROS-mediated maps activation. *Cancer Lett.* **2011**, *312*, 178–188. [[CrossRef](#)]
114. Dahham, S.S.; Tabana, Y.M.; Iqbal, M.A.; Ahamed, M.B.; Ezzat, M.O.; Majid, A.S.; Majid, A.M. The Anticancer, Antioxidant and Antimicrobial Properties of the Sesquiterpene  $\beta$ -Caryophyllene from the Essential Oil of *Aquilaria crassna*. *Molecules* **2015**, *20*, 11808–11829. [[CrossRef](#)]
115. Fidy, K.; Fiedorowicz, A.; Strzdała, L.; Szumny, A.  $\beta$ -caryophyllene and  $\beta$ -caryophyllene oxide-natural compounds of anticancer and analgesic properties. *Cancer Med.* **2016**, *10*, 3007–3017. [[CrossRef](#)]
116. Myszka, K.; Schmidt, M.T.; Majcher, M.; Juzwa, W.; Czaczyk, K.  $\beta$ -Caryophyllene-rich pepper essential oils suppress spoilage activity of *Pseudomonas fluorescens* KM06 in fresh-cut lettuce. *LWT Food Sci. Technol.* **2017**, *83*, 118–126. [[CrossRef](#)]
117. Jones, C.D.; Woods, K.E.; Setzer, W.N. A chemical ecological investigation of the allelopathic potential of *Lamium amplexicaule* and *Lamium purpureum*. *Open J. Ecol.* **2012**, *2*, 167–177. [[CrossRef](#)]
118. Wang, L.; Well, C.L. Recent advances in extraction of nutraceuticals from plants. *Trends Food Sci. Technol.* **2006**, *17*, 300–312. [[CrossRef](#)]
119. Baker, D.A. Plants against *Helicobacter pylori* to combat resistance: An ethnopharmacological review. *Biotechnol. Rep.* **2020**, *26*, e00470. [[CrossRef](#)] [[PubMed](#)]
120. Mohammed, A.; Victoria Awolola, G.; Ibrahim, M.A.; Anthony Koorbanally, N.; Islam, M.S. Oleanolic acid as a potential antidiabetic component of *Xylopiya aethiopica* (Dunal) A. Rich. (Annonaceae) fruit: Bioassay guided isolation and molecular docking studies. *Nat. Prod. Res.* **2021**, *35*, 788–791. [[CrossRef](#)]
121. Fernandes, C.P.; Corrêa, A.L.; Lobo, J.F.R.; Caramel, O.P.; de Almeida, F.B.; Castro, E.S.; Souza, K.F.C.S.; Burth, P.; Amorim, L.M.F.; Santos, M.G.; et al. Triterpene Esters and Biological Activities from Edible Fruits of *Manilkara subsericea* (Mart.) Dubard, Sapotaceae. *BioMed Res. Int.* **2013**, 280810. [[CrossRef](#)]
122. Okoye, N.N.; Ajaghaku, D.L.; Okeke, H.N.; Ilodigwe, E.E.; Nworu, C.S.; Okoye, F.B.C. Beta-Amyrin and alpha-amyrin acetate isolated from the stem bark of *Alstonia boonei* display profound anti-inflammatory activity. *Pharm. Biol.* **2014**, *52*, 1478–1486. [[CrossRef](#)]
123. De Almeida, P.D.O.; de Boleti, A.P.; Rüdiger, A.L.; Lourenço, G.A.; Florêncio da Veiga Junior, V.; Lima, E.S. Anti-Inflammatory Activity of Triterpenes Isolated from *Protium paniculatum* Oil-Resins. *Evid. Based Complement. Altern. Med.* **2015**, 293768. [[CrossRef](#)]

124. Henneh, I.T.; Huang, B.; Musayev, F.N.; Al Hashimi, R.; Safo, M.K.; Armah, F.A.; Ameyaw, E.O.; Adokoh, C.K.; Ekor, M.; Zhang, Y. Structural elucidation and in vivo anti-arthritic activity of  $\beta$ -amyryn and polpunonic acid isolated from the root bark of *Ziziphus abyssinica* Hochst Ex. A Rich (Rhamnaceae). *Biorgan. Chem.* **2020**, *98*, 103744. [CrossRef]
125. El-Desouky, S.K.; Abdelgawad, A.A.; El-Hagrassi, A.M.; Hawas, U.W.; Kim, Y.-K. Chemical composition, cytotoxic and antioxidant activities of *Celosia trigyna* L. grown in Saudi Arabia. *Acta Pol. Pharm. Drug Res.* **2019**, *76*, 691–699. [CrossRef]
126. Abdel Bar, F.M.; Abbas, G.M.; Gohar, A.A.; Lahloub, M.-F.I. Antiproliferative activity of stilbene derivatives and other constituents from the stem bark of *Morus nigra* L. *Nat. Prod. Res.* **2020**, *34*, 3506–3513. [CrossRef] [PubMed]
127. Damtoft, S.; Jensen, S.R.; Nielsen, B.J. Biosynthesis of iridoid glucosides in *Lamium album*. *Phytochemistry* **1992**, *31*, 135–137. [CrossRef]
128. Czerwińska, M.E.; Świerczewska, A.; Granica, S. Bioactive constituents of *Lamium album* L. as inhibitors of cytokine secretion in human neutrophils. *Molecules* **2018**, *23*, 2770. [CrossRef] [PubMed]
129. Czerwińska, M.E.; Kalinowska, E.; Popowski, D.; Bazyłko, A. Lamalbid, chlorogenic acid and verbascoside as tools for standardization of *Lamium album* flowers—development and validation of HPLC–DAD method. *Molecules* **2020**, *25*, 1721. [CrossRef]
130. Zhang, S.; Feng, Z.; Gao, W.; Duan, Y.; Fan, G.; Geng, X.; Wu, B.; Li, K.; Liu, K.; Peng, C. Aucubin Attenuates Liver Ischemia-Reperfusion Injury by Inhibiting the HMGB1/TLR-4/NF- $\kappa$ B Signaling Pathway, Oxidative Stress, and Apoptosis. *Front. Pharmacol.* **2020**, *11*, 544124. [CrossRef]
131. Zhou, Y.; Li, P.; Duan, J.-X.; Liu, T.; Guan, X.-X.; Mei, W.-X.; Liu, Y.-P.; Sun, G.-Y.; Wan, L.; Zhong, W.-J.; et al. Aucubin Alleviates Bleomycin-Induced Pulmonary Fibrosis in a Mouse Model. *Inflammation* **2017**, *40*, 2062–2073. [CrossRef]
132. Dąbrowska, M.; Nowak, I. Noninvasive evaluation of the influence of aucubin-containing cosmetic macroemulsion on selected skin parameters. *J. Cosmet. Dermatol.* **2021**, *20*, 1022–1030. [CrossRef]
133. Hegi, G. *Illustrierte Flora von Mittel-Europa*; Carl Hanser: München, Germany, 1965.
134. Mennema, J. *A Taxonomic Revision of Lamium (Lamiaceae)*; Brill Archive: Paderborn, Germany, 1989; Volume 11.
135. Stpicyńska, M.; Davies, K.L.; Pacek-Bieniek, A.; Kamińska, M. Comparative anatomy of the floral elaiophore in representatives of the newly re-circumscribed *Gomesa* and *Oncidium* clades (Orchidaceae: Oncidiinae). *Ann. Bot.* **2013**, *112*, 839–854. [CrossRef]
136. Johansen, D.A. *Plant Microtechnique*, 1st ed.; McGraw Hill: New York, NY, USA; London, UK, 1940.
137. Pearse, A. Pigment and pigment precursors. In *Histochemistry, Theoretical and Applied*; Pearse, A., Ed.; Churchill Livingstone: London, UK, 1985; Volume 2, pp. 874–928.
138. Brundrett, M.C.; Kendrick, B.; Peterson, C.A. Efficient lipid staining in plant material with Sudan Red 7 B or Fluoral Yellow 088 in polyethylene glycol-glycerol. *Biotech. Histochem.* **1991**, *66*, 111–116. [CrossRef]
139. Lison, L. *Histochemie et Cytochemie Animals. Principes et Méthodes*; Gauthier-Villars: Paris, France, 1960; Volume 1.
140. Cain, A.J. The use of Nile blue in the examination of lipids. *J. Cell Sci.* **1947**, *88*, 383–392. [CrossRef]
141. Jensen, W.A. *Botanical Histochemistry Principles and Practice*, 1st ed.; WH Freeman and Company: San Francisco, CA, USA, 1962.
142. David, R.; Carde, J.P. Coloration différentielle des inclusions lipidique et terpéniques des pseudophylles du pin maritime au moyen du réactif Nadi. *CR Acad. Sci. Paris* **1964**, *258*, 1338–1340.
143. Kirk, P.W., Jr. Neutral red as a lipid fluorochrome. *Stain Technol.* **1970**, *45*, 1–4. [CrossRef] [PubMed]
144. Clark, G. *Staining Procedures*, 4th ed.; Williams and Wilkins: Baltimore, MD, USA, 1981.
145. Inouye, H. Iridoids. In *Methods in Biochemistry*; Charlwood, B.V., Banthorpe, D.V., Eds.; Academic Press: London, UK, 1991; Volume 7, pp. 99–143.
146. Polish Pharmaceutical Society. *Polish Pharmacopoeia*, 6th ed.; Polish Pharmaceutical Society: Warsaw, Poland, 2002.
147. Van Den Dool, H.; Kratz, P.D. A generalization of the retention index system including linear temperature programmed gas-liquid partition chromatography. *J. Chromat.* **1963**, *11*, 463–471. [CrossRef]
148. Adams, R.P. *Identification of Essential Oil Components by Gas Chromatography/Quadrupole Mass Spectroscopy*, 3th ed.; Allured Pub Corp.: Carol Stream, IL, USA, 2001.
149. Mass Spectral Library. NIST/EPA/NIH, USA. 2020. Available online: <https://chemdata.nist.gov/dokuwiki/doku.php?id=chemdata:start> (accessed on 26 May 2020).
150. Polish Pharmaceutical Society. *Polish Pharmacopoeia*, 5th ed.; Polish Pharmaceutical Society: Warsaw, Poland, 1999.
151. Strzelecka, H.; Kamińska, J.; Kowalski, J.; Malinowski, J.; Walewska, E. *Chemiczne Metody Badań Roślinnych Surowców Leczniczych*; PZWL: Warszawa, Polska, 1987.