

Corrigendum

Corrigendum to “Six-Year Outcomes of 25-Gauge Chandelier Illumination-Assisted Scleral Buckling”

Hui Li, Conghui Zhang, Jiayi Wei, Khusbu Keyal, and Fang Wang

Department of Ophthalmology, Shanghai Tenth People’s Hospital Affiliated to Tongji University, Shanghai 200072, China

Correspondence should be addressed to Fang Wang; f_wang7527@163.com

Received 6 December 2021; Accepted 6 December 2021; Published 5 January 2022

Copyright © 2022 Hui Li et al. This is an open access article distributed under the Creative Commons Attribution License, which permits unrestricted use, distribution, and reproduction in any medium, provided the original work is properly cited.

In the article titled “Six-Year Outcomes of 25-Gauge Chandelier Illumination-Assisted Scleral Buckling” [1], there was an error in Figure 1, which should be corrected as follows:

Additionally, the acknowledgement section should be added as follows:

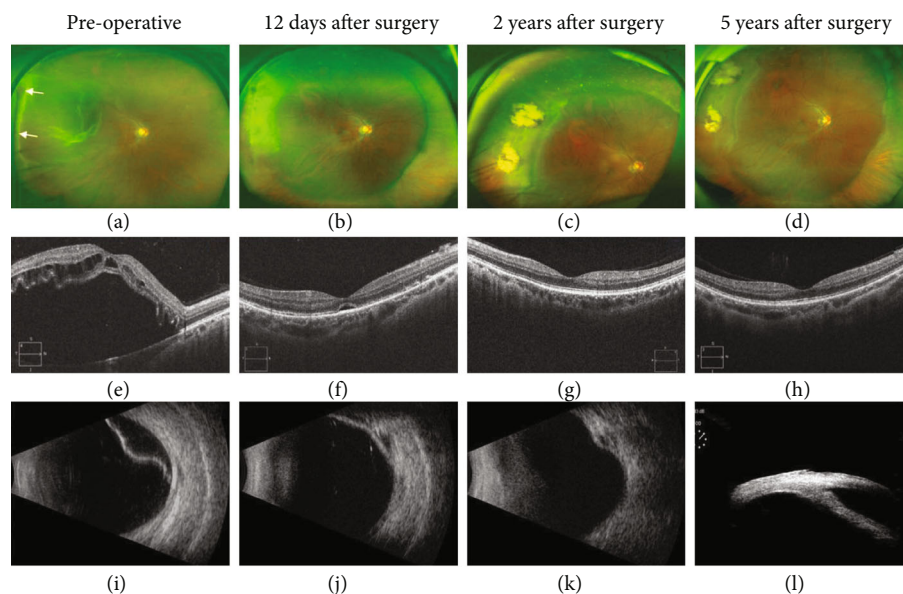


FIGURE 1: Examination result of case 10 before and after surgery. (a) Preoperative fundus photography showed retinal detachment and holes. (b)–(d) Fundus photography showed retinal reattachment, scleral buckle ridge, and cryoretinopexy scar at different times after surgery. (e) OCT demonstrated macular off and intraretinal cyst before surgery. (f)–(h) OCT showed macular reposition. (i) B-ultrasound confirmed retinal detachment. (j, k) B-ultrasound demonstrated retina reattachment and scleral buckle ridge. (l) 25-gauge chandelier insertion site was checked by UBM.

Acknowledgments

This work is partial supported by the Shanghai Municipal Commission of Health and Family Planning (20174Y0052).

References

- [1] H. Li, C. Zhang, J. Wei, K. Keyal, and F. Wang, “Six-year outcomes of 25-gauge chandelier illumination-assisted scleral buckling,” *BioMed Research International*, vol. 2021, Article ID 4628160, 6 pages, 2021.