

RESEARCH ARTICLE

Open Access

Oral *Candida albicans* isolates from HIV-positive individuals have similar in vitro biofilm-forming ability and pathogenicity as invasive *Candida* isolates

Juliana C Junqueira^{1*}, Beth B Fuchs², Maged Muhammed², Jeffrey J Coleman², Jamal MAH Suleiman³, Simone FG Vilela¹, Anna CBP Costa¹, Vanessa MC Rasteiro¹, Antonio OC Jorge¹ and Eleftherios Mylonakis²

Abstract

Background: *Candida* can cause mucocutaneous and/or systemic infections in hospitalized and immunosuppressed patients. Most individuals are colonized by *Candida* spp. as part of the oral flora and the intestinal tract. We compared oral and systemic isolates for the capacity to form biofilm in an in vitro biofilm model and pathogenicity in the *Galleria mellonella* infection model. The oral *Candida* strains were isolated from the HIV patients and included species of *C. albicans*, *C. glabrata*, *C. tropicalis*, *C. parapsilosis*, *C. krusei*, *C. norvegensis*, and *C. dubliniensis*. The systemic strains were isolated from patients with invasive candidiasis and included species of *C. albicans*, *C. glabrata*, *C. tropicalis*, *C. parapsilosis*, *C. lusitanae*, and *C. kefyr*. For each of the acquired strains, biofilm formation was evaluated on standardized samples of silicone pads and acrylic resin. We assessed the pathogenicity of the strains by infecting *G. mellonella* animals with *Candida* strains and observing survival.

Results: The biofilm formation and pathogenicity in *Galleria* was similar between oral and systemic isolates. The quantity of biofilm formed and the virulence in *G. mellonella* were different for each of the species studied. On silicone pads, *C. albicans* and *C. dubliniensis* produced more biofilm (1.12 to 6.61 mg) than the other species (0.25 to 3.66 mg). However, all *Candida* species produced a similar biofilm on acrylic resin, material used in dental prostheses. *C. albicans*, *C. dubliniensis*, *C. tropicalis*, and *C. parapsilosis* were the most virulent species in *G. mellonella* with 100% of mortality, followed by *C. lusitanae* (87%), *C. norvegensis* (37%), *C. krusei* (25%), *C. glabrata* (20%), and *C. kefyr* (12%).

Conclusions: We found that on silicone pads as well as in the *Galleria* model, biofilm formation and virulence depends on the *Candida* species. Importantly, for *C. albicans* the pathogenicity of oral *Candida* isolates was similar to systemic *Candida* isolates, suggesting that *Candida* isolates have similar biofilm-forming ability and virulence regardless of the infection site from which it was isolated.

Background

Fungi are increasingly recognized as major pathogens in critically ill patients. *Candida* spp. are the fourth leading cause of bloodstream infections in the U.S. and disseminated candidiasis is associated with a mortality in excess of 25% [1-3]. Oropharyngeal candidiasis (OPC) is the

most frequent opportunistic infection encountered in human immunodeficiency virus (HIV) infected individuals with 90% at some point experiencing OPC during the course of HIV disease [4]. Among *Candida* species, *C. albicans* is the most commonly isolated and responsible for the majority of superficial and systemic infections. However, many non-*albicans* species, such as *C. glabrata*, *C. parapsilosis* and *C. tropicalis* have recently emerged as important pathogens in suitably debilitated individuals [5].

* Correspondence: juliana@fosjc.unesp.br

¹Department of Biosciences and Oral Diagnosis, Univ Estadual Paulista/UNESP, 777 Av. Eng. Francisco José Longo, São José dos Campos, SP 12245000, Brazil

Full list of author information is available at the end of the article

A major virulence factor of *Candida* is its ability to adapt to a variety of different habitats and the consequent formation of surface-attached microbial communities known as biofilms [5]. *Candida* biofilms can develop on natural host surfaces or on biomaterials used in medical devices such as silicone and in dental prosthesis such as acrylic resin [6,7]. The biofilm formation in vitro entails three basic stages: (i) attachment and colonization of yeast cells to a surface, (ii) growth and proliferation of yeast cells to allow formation of a basal layer of anchoring cells, and (iii) growth of pseudohyphae and extensive hyphae concomitant with the production of extracellular matrix material [8,9]. Once established, *Candida* biofilms serve as a persistent reservoir of infection and are more resistant to antifungal agents [6].

The versatility of fungal pathogenicity mechanisms and their development of resistance to antifungal drugs indicate the importance of understanding the nature of host-pathogen interactions. Researchers have developed invertebrate model hosts in order to facilitate the study of evolutionarily preserved elements of fungal virulence and host immunity [10]. These invertebrate systems such as *Caenorhabditis elegans*, *Drosophila melanogaster*, *Dictyostelium discoideum* and *Galleria mellonella* offer a number of advantages over mammalian vertebrate models, predominantly because they allow the study of strains without the ethical considerations associated with mammalian studies [11-13]. Importantly, *Candida* pathogenicity can be evaluated using the greater wax moth *G. mellonella* as an infection model. This model has yielded results that are comparable to those obtained using mammalian models and there is remarkable commonality between virulence factors required for disease in mice and for killing of *G. mellonella* [14-17].

The pathogenesis of *Candida* spp. depends upon the coordinated expression of multiple genes in a manner that facilitates proliferation, invasion and tissue damage in a host. Since each invaded tissue is a unique ecological niche that changes over the course of the disease process, the expression of genes by *Candida* can vary according to the infected site [18]. Costa et al. [19] demonstrated that blood *Candida* isolates were more proteolytic than oral cavity isolates while oral cavity isolates produced more phospholipase than blood isolates. On the other hand, Hasan et al. [20] using colorimetric assays verified that *C. albicans* strains isolated both from blood and oral mucosa produced the same quantity of biofilm. However, there are no studies to interrogate biofilm production on medical biomaterials and pathogenicity of isolates from localized and systemic candidiasis using an invertebrate model.

The objective of this study was to compare biofilm production of oral and systemic *Candida* isolates using an in vitro biofilm model on silicone (a material that is used in a number of implantable devices and catheters) and acrylic resin (a material that is used in preparation of dental prostheses). We were also interested in determining the pathogenicity of the strains in the *Galleria mellonella* infection model, considering they were isolated from different host environments, either blood or oral collection sites.

Methods

Candida isolates

A total of 33 clinical *Candida* strains recovered from oral and systemic candidiasis of different patients were used in this study. The oral *Candida* strains were isolated from the saliva or oropharyngeal candidiasis of 17 HIV-positive patients (65% men, 35% women) at the Emílio Ribas Institute of Infectious Diseases (São Paulo, SP, Brazil). The mean age was 46 years (33 - 63 years) and CD4+ lymphocyte counts ranged from 105 to 1000 cells/mm³ with a mean count of 388 cells/mm³. *Candida* spp. isolated from these patients included: *C. albicans* (n = 11), *C. glabrata* (n = 3), *C. tropicalis* (n = 2), *C. parapsilosis* (n = 1), *C. krusei* (n = 1), *C. norvegensis* (n = 1), and *C. dubliniensis* (n = 2). The Ethics Committee of the Emílio Ribas Institute of Infectious Diseases approved this study (275/2009).

The systemic *Candida* strains were isolated from patients with invasive candidiasis at Massachusetts General Hospital (Boston, MA, USA) and included species of *C. albicans* (n = 5), *C. glabrata* (n = 2), *C. tropicalis* (n = 2), *C. parapsilosis* (n = 1), *C. kefyr* (n = 1), and *C. lusitaniae* (n = 1) (Table 1). These isolates were collected from eleven patients with a mean age of 57 years (40-78), that were HIV negative but had other underlying medical conditions. The use of *Candida* isolates was approved by the Massachusetts General Hospital Institutional Review Board (2008-P-001017).

The identification of *Candida* species was done by growth on Hicrome *Candida* (Himedia, Mumbai, India), germ tube test, chlamyospore formation on corn meal agar, and API20C for sugar assimilation (BioMérieux, Marcy Etoile, France). The identity of *C. dubliniensis* was determined by a multiplex polymerase chain reaction (PCR) procedure, according to the methodology described by MähB et al. [21].

Susceptibility patterns of the isolates to fluconazole and amphotericin B were determined by the broth microdilution assay according to the Clinical and Laboratory Standards Institute (CLSI) document M27-A2 [22]. Final concentrations of fluconazole ranged from 64 to 0.125 µg/mL and amphotericin B from 16 to 0.031 µg/mL. Antifungal activity was expressed as the

Table 1 *Candida* isolates used in this study and their susceptibility to antifungals and interactions with *G. mellonella*

| Microorganisms | | | Susceptibility to Antifungal (MIC) | | | <i>Galleria mellonella</i> | |
|--------------------------|--------------------------|---------------------|------------------------------------|-------------------|--------------------|----------------------------|------------------------------|
| Specie of <i>Candida</i> | Strain of <i>Candida</i> | Clinical isolate | Fluconazole (µg/mL) | Amph B (µg/mL) | CFU/larva injected | Number of killing/total | Medium time to mortality (h) |
| <i>C. albicans</i> | 4S | Saliva | 0.125 | 0.25 | 7.1×10^5 | 16/16 | 18 |
| | 10S | Saliva | 0.125 | 0.5 | 5.2×10^5 | 16/16 | 18 |
| | 24S | Saliva | 0.125 | 0.5 | 9.4×10^5 | 16/16 | 18 |
| | 31S | Saliva | 0.125 | 0.5 | 5.0×10^5 | 16/16 | 24 |
| | 39S | Saliva | Resistant | 0.25 | 5.9×10^5 | 16/16 | 18 |
| | 48S | Saliva | 0.125 | 0.25 | 6.7×10^5 | 16/16 | 18 |
| | 60S | Saliva | 0.125 | 0.25 | 6.3×10^5 | 16/16 | 18 |
| | 3 | OPC | 0.5 | 0.25 | 7.2×10^5 | 16/16 | 18 |
| | 14 | OPC | Resistant | 0.25 | 5.7×10^5 | 16/16 | 18 |
| | 21 | OPC | Resistant | 0.25 | 7.5×10^5 | 16/16 | 18 |
| | 37 | OPC | Resistant | 0.25 | 5.5×10^5 | 16/16 | 18 |
| | CAL006 | Blood culture | 0.125 | 0.5 | 1.9×10^5 | 16/16 | 24 |
| | CAL007 | Peritoneal fluid | 2 | 0.25 | 4.5×10^5 | 16/16 | 24 |
| | CAL008 | Peritoneal fluid | 1 | 0.5 | 7.2×10^5 | 16/16 | 18 |
| | CAL009 | Blood culture | 1 | 0.5 | 4.7×10^5 | 16/16 | 18 |
| CAL010 | Subdiaphragmatic | 1 | 0.5 | 4.8×10^5 | 16/16 | 18 | |
| <i>C. tropicalis</i> | 12 | OPC | 0.5 | 0.25 | 3.9×10^5 | 16/16 | 18 |
| | 140S | Saliva | 0.125 | 0.25 | 4.9×10^5 | 16/16 | 18 |
| | CTR002 | Synovial fluid | Resistant | 0.5 | 9.1×10^5 | 16/16 | 18 |
| | CTR003 | Abdominal fluid | 2 | 0.5 | 5.0×10^5 | 16/16 | 18 |
| <i>C. parapsilosis</i> | 127S | Saliva | 1 | 0.5 | 6.2×10^5 | 16/16 | 18 |
| | CPA001 | Lung tissue | 4 | 0.5 | 7.3×10^5 | 16/16 | 21 |
| <i>C. glabrata</i> | 12S | Saliva | 2 | 0.5 | 6.4×10^5 | 2/16 | - |
| | 45 | OPC | 4 | 0.5 | 9.8×10^5 | 6/16 | - |
| | 55 | OPC | 4 | 0.5 | 1.0×10^6 | 0/16 | - |
| | CGL002 | Drainage | 32 | 0.5 | 4.0×10^5 | 0/16 | - |
| | CGL003 | Jackson-Pratt fluid | 32 | 0.5 | 5.4×10^5 | 8/16 | - |
| <i>C. dubliniensis</i> | 18S | Saliva | 16 | 0.25 | 3.9×10^5 | 16/16 | 18 |
| | 155S | Saliva | 0.5 | 0.25 | 5.1×10^5 | 16/16 | 18 |
| <i>C. lusitanae</i> | CLU005 | Blood culture | 2 | 1 | 1.4×10^5 | 14/16 | - |
| <i>C. norvegensis</i> | 52S | Saliva | 32 | 0.5 | 6.3×10^5 | 6/16 | - |
| <i>C. krusei</i> | 58 | OPC | Resistant | 2 | 8.8×10^5 | 4/16 | - |
| <i>C. kefyr</i> | CKE002 | Blood culture | 2 | 1 | 4.2×10^5 | 2/16 | - |

minimum inhibitory concentration (MIC) of each isolate to the drug. The resistance breakpoints were used as described in the CLSI guidelines [22].

In vitro biofilm model

The ability of *Candida* isolates to form biofilm on silicone and acrylic resin was evaluated as described by Nobile & Mitchell [23] and Breger et al. [24]. In brief, strains of *Candida* were grown in YPD medium (2% dextrose, 2% Bacto Peptone, 1% yeast extract) overnight at 30°C, diluted to an OD₆₀₀ of 0.5 in 2 mL Spider medium, and added to a well of a sterile 12-well plate containing a silicone square measuring 1.5 × 1.5 cm (cut from Cardiovascular Instrument silicone sheets) or a

chemically activated acrylic resin measuring 5 mm in diameter and 2.5 mm in thickness (Clássico, São Paulo, SP, Brazil) that had been pretreated overnight with bovine serum (Sigma-Aldrich). The inoculated 12-well plate was incubated with gentle agitation (150 rpm) for 90 min at 37°C for adhesion to occur. The standardized samples were washed with 2 mL PBS, and incubation was continued for 60 h at 37°C at 150 rpm in 2 mL of fresh Spider medium.

The platform and attached biofilm were removed from the wells, dried overnight, and weighed the following day. The total biomass (mg) of each biofilm was calculated by subtracting the weight of the platform material prior to biofilm growth from the weight after the drying

period and adjusting for the weight of a control pad exposed to no cells.

The average total biomass for each strain was calculated from four independent samples. Statistical significance among the *Candida* species was determined by the analyses of variance (ANOVA) and the Tukey test using the Minitab Program. For comparison between oral and systemic *Candida* isolates, the Student t test was used. A *p*-value of less than 0.05 was considered significant.

Galleria mellonella infection model

G. mellonella were infected with *Candida* as previously described by Cotter et al. [25], Brennan et al. [26] and Fuchs et al. [27]. In brief, *G. mellonella* caterpillars in the final instar larval stage (Vanderhorst, Inc., St. Marys, Ohio) were stored in the dark and used within 7 days from the date of shipment. Sixteen randomly chosen caterpillars (330 ± 25 mg) were infected for each *Candida* isolate.

Candida inocula were prepared by growing 50 mL YPD cultures overnight at 30°C. Cells were pelleted at 1,308 Xg for 10 min followed by three washes in PBS. Cell densities were determined by hemacytometer count. *Candida* inocula were confirmed by determining the colony-forming units per milliliter (CFU/mL) on YPD.

A Hamilton syringe was used to deliver *Candida* inocula at 10⁵ cells/larvae in a 10 µL volume into the hemocoel of each larva via the last left proleg. Before injection, the area was cleaned using an alcohol swab. After injection, larvae were incubated in plastic containers (37°C), and the number of dead *G. mellonella* was scored daily. Larvae were considered dead when they displayed no movement in response to touch. Killing curves were plotted and statistical analysis was performed by the Log-rank (Mantel-Cox) test using Graph Pad Prism statistical software.

Results

Antifungal susceptibility of oral and systemic *Candida* isolates

The data of *Candida* strains identification and susceptibility to antifungal drugs (MIC) are shown in Table 1. The range of MIC to fluconazole was 0.125 to 64 µg/mL both for oral and systemic isolates. The resistance to fluconazole was observed in 5 (23%) oral isolates (4 *C. albicans* and 1 *C. krusei*) and 1 (8%) systemic isolate of *C. tropicalis*. The MIC to amphotericin B ranged from 0.25 to 2 µg/mL for oral isolates and from 0.25 to 1 µg/mL for systemic isolates.

Biofilm formation by oral and systemic *Candida* isolates

All isolates of oral and systemic candidiasis formed biofilm on silicone pads, but the quantity of biofilm mass

was different for the species studied ranging from 2.17 to 6.61 mg. Biofilm formation was highest in *C. albicans* and *C. dubliniensis* followed by *C. tropicalis* and *C. norvegensis*. Biofilm mass formed by *C. albicans* differed significantly from biofilm mass produced by *C. norvegensis* (*P* = 0.009), *C. parapsilosis* (*P* = 0.003), *C. glabrata* (*P* = 0.001), *C. krusei* (*P* = 0.001), *C. lusitaniae* (*P* = 0.001), and *C. kefyr* (*P* = 0.001). Biofilm produced by *C. dubliniensis* was significantly different from biofilm mass produced by *C. parapsilosis* (*P* = 0.046), *C. glabrata* (*P* = 0.025), *C. krusei* (*P* = 0.013), *C. lusitaniae* (*P* = 0.007), and *C. kefyr* (*P* = 0.006) (Table 2 and Figure 1).

The biofilm mass adhered on acrylic resin ranged from 0.25 to 1.50 mg depending on the *Candida* species tested. *C. albicans*, *C. dubliniensis*, *C. tropicalis*, *C. parapsilosis*, *C. glabrata*, and *C. lusitaniae* formed more biofilm than *C. norvegensis*, *C. krusei* and *C. kefyr*. However, significant differences between the *Candida* species were not observed (*P* = 0.062) (Table 2 and Figure 1).

The biofilm mass formed by oral and systemic isolates of *C. albicans* were compared and showed similar results both for biofilm formed on silicone pads as biofilm formed on acrylic resin (Figure 2).

Killing of *G. mellonella* by oral and systemic *Candida* isolates

The virulence of *Candida* isolates in the *G. mellonella* model was dependent on the species studied. *C. albicans*, *C. dubliniensis*, *C. tropicalis* and *C. parapsilosis* were the most virulent species in *G. mellonella* (Table 1). Among all *Candida* strains studied, *G. mellonella* showed mortality rates of 100% after injection with *C. albicans*, *C. dubliniensis*, *C. tropicalis*, and *C. parapsilosis*, 87% with *C. lusitaniae*, 37% with *C. norvegensis*, 25% with *C. krusei*, 20% with *C. glabrata*, and 12% with *C. kefyr* over a 96 hour period (Figures 3 and 4). Of note is that, all isolates of *C. albicans*, including strains sensitive and resistant to fluconazole, presented the same virulence in *G. mellonella* with a medium time to mortality of 18 to 24 hours (Table 1).

The virulence between oral and systemic *Candida* isolates was compared according to each species of *Candida*. The results of survival of *G. mellonella* larvae showed no statistically significant difference between oral and systemic isolates of *C. albicans* (*P* = 0.372, Figure 3a), *C. tropicalis* (*P* = 0.914, Figure 3b), and *C. parapsilosis* (*P* = 0.661, Figure 3c).

For *C. glabrata*, a statistically significant difference was observed between the strains CGL002 and CGL003 (*P* = 0.003), CGL002 and 45 (*P* = 0.007), CGL003 and 12S (*P* = 0.049), CGL003 and 55 (*P* = 0.024), 45 and 55 (*P* = 0.033), showing the occurrence of variation in virulence between strains of *C. glabrata* for both the oral isolates and the systemic isolates (Figure 3d).

Table 2 Means and SDs of the biofilm mass (mg) formed on silicone pads and acrylic resin for *Candida* species studied and p-value obtained for each *Candida* specie compared to *C. albicans* (Tukey test, $P < 0.05$)

| <i>Candida</i> species | Silicone | p-value (compared to <i>C. albicans</i>) | Acrylic resin | p-value (compared to <i>C. albicans</i>) |
|------------------------|-------------|--|---------------|--|
| <i>C. albicans</i> | 6.61 ± 0.70 | - | 1.12 ± 0.68 | - |
| <i>C. tropicalis</i> | 3.66 ± 2.22 | 0.062 | 1.41 ± 1.25 | 0.998 |
| <i>C. parapsilosis</i> | 2.87 ± 0.98 | 0.003 | 1.50 ± 0.57 | 0.982 |
| <i>C. glabrata</i> | 2.81 ± 2.09 | 0.001 | 1.15 ± 0.67 | 1.000 |
| <i>C. dubliniensis</i> | 5.85 ± 1.30 | 0.989 | 1.25 ± 0.50 | 1.000 |
| <i>C. lusitaniae</i> | 2.22 ± 0.86 | 0.001 | 1.25 ± 0.50 | 1.000 |
| <i>C. norvegensis</i> | 3.22 ± 0.66 | 0.001 | 0.25 ± 0.50 | 0.347 |
| <i>C. krusei</i> | 2.42 ± 0.84 | 0.001 | 0.25 ± 0.50 | 0.347 |
| <i>C. kefyr</i> | 2.17 ± 0.26 | 0.001 | 1.00 ± 0.00 | 1.000 |

Discussion

In this study we compared the pathogenicity of oral and systemic *Candida* isolates. The pathogenesis of diverse candidal diseases depends upon both generalized virulence factors and those that function in specific environments dictated by immune function, tissue site and other host factors. The data presented here demonstrate that the pathogenicity of oral *Candida* isolates is similar to systemic *Candida* isolates, suggesting that the pathogenicity of *Candida* is not correlated with the infected site.

The pathogenesis of both oral and systemic candidiasis is closely dictated by properties of the yeast biofilms [28,29]. Implanted devices, such as venous catheters or dental prosthesis, are a serious risk factor for *Candida* infections. They are substrates for the formation of biofilm, which in turn serve as reservoirs of cells to continually seed an infection [8]. It has been estimated that

at least 65% of all human infectious are related to microbial biofilms [30,31].

A variety of methods have recently been used for the quantification of *Candida* biofilm on different substrata. These include counting of colony forming units (CFU), dry-weight assays, spectrophotometric analysis, and colorimetric assays, such as 2,3-bis (2-methoxy-4-nitro-5-sulfophenyl)-5-[(phenylamino) carbonyl]-2H-tetrazolium hydroxide (XTT) reduction assay. However, each method carries its own advantages and limitations [7,32,33]. In our study, we used a dry-weight assay because this method allows the single quantification of a *Candida* biofilm on a clinically relevant substrate such as silicone and acrylic resin. Silicone is frequently used in the manufacture of medical devices and catheters and it is related to development of systemic candidiasis in hospitalized patients. Acrylic resin (methyl methacrylate) is a material widely used in preparation of dental

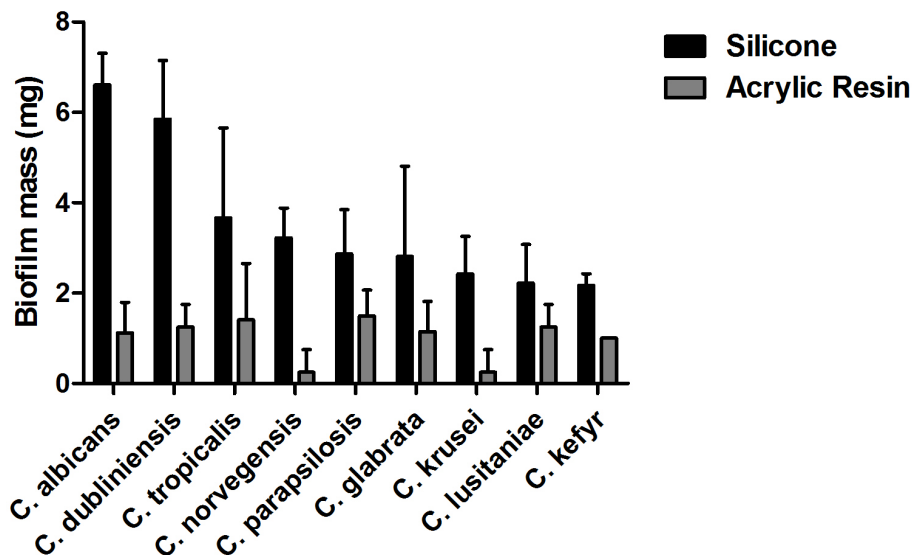
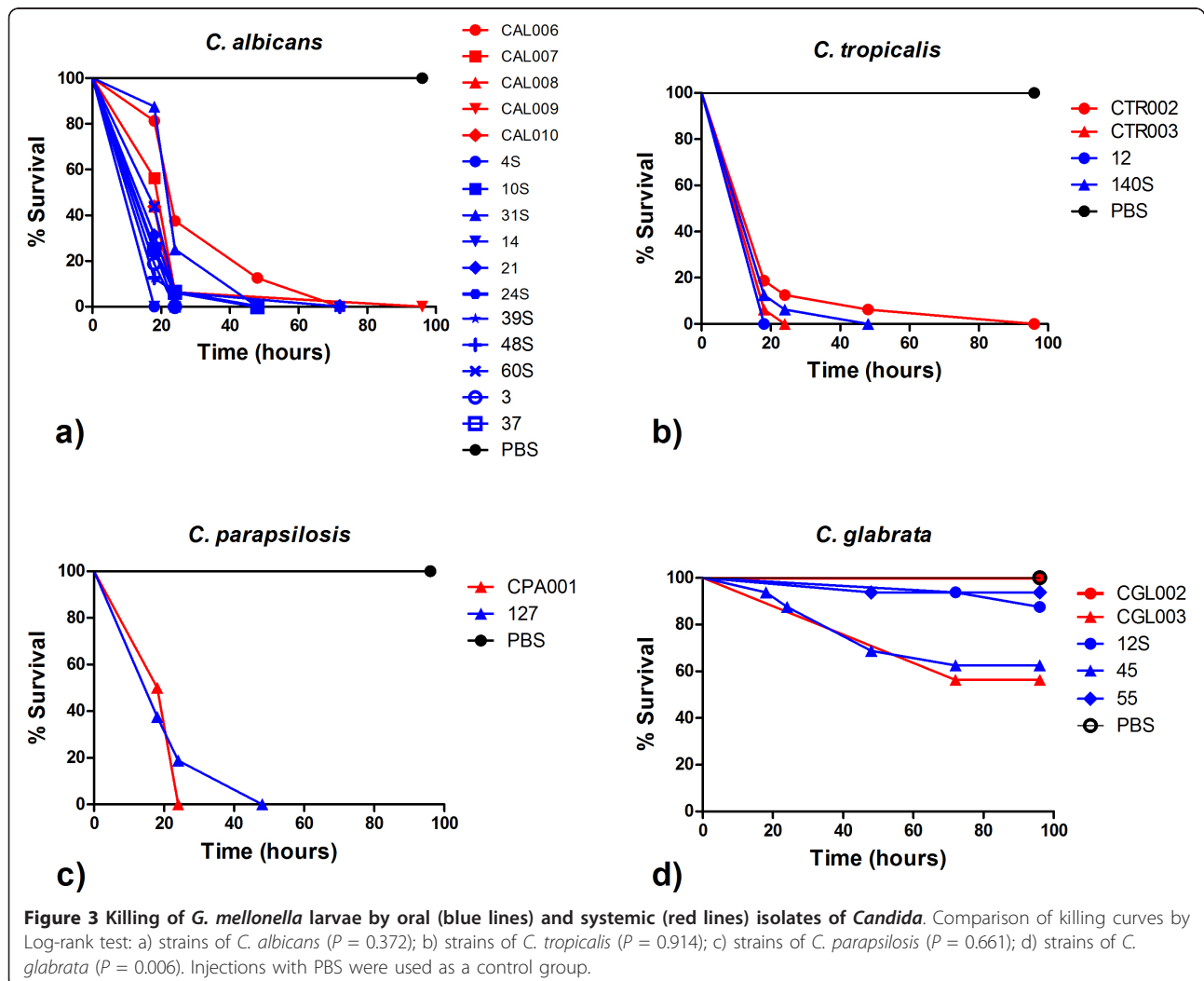
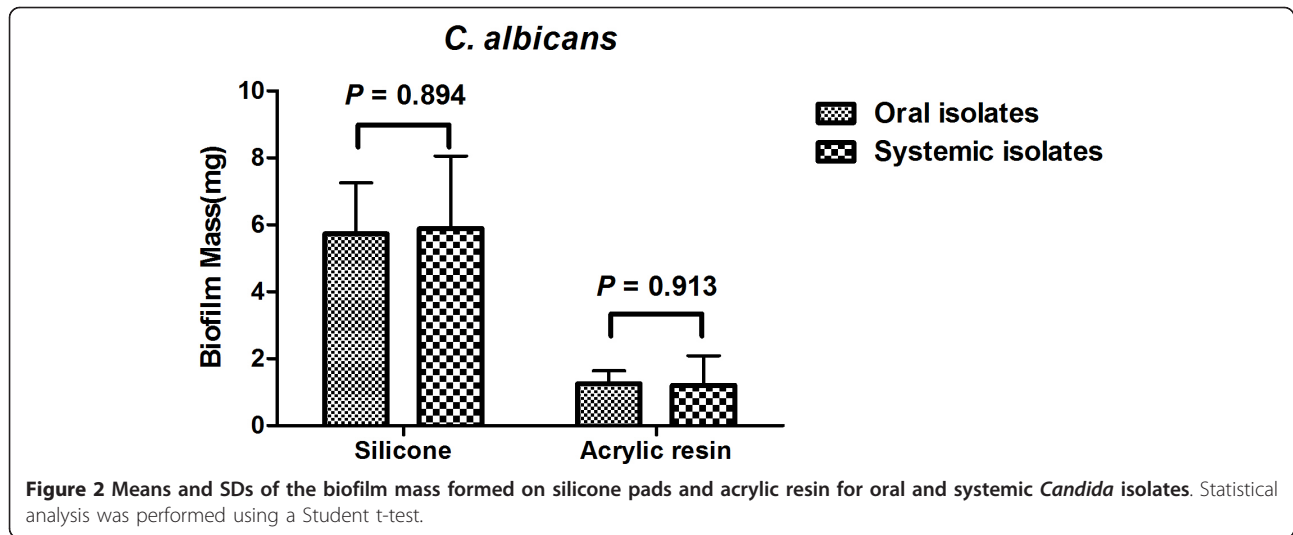


Figure 1 Means and SDs of the biofilm mass formed on silicone pads and acrylic resin for *Candida* species studied.



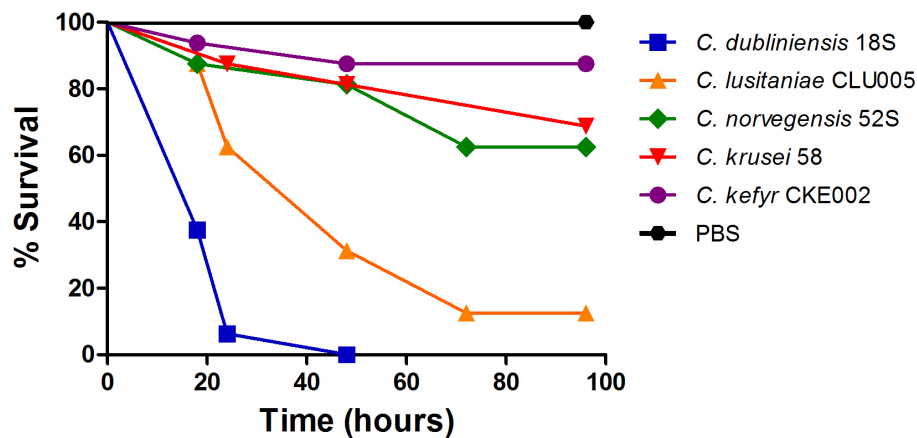


Figure 4 Killing of *G. mellonella* larvae by isolates of *C. dubliniensis*, *C. lusitaniae*, *C. norvegensis*, *C. krusei*, and *C. kefyr*. Injections with PBS were used as a control group.

prosthesis and it has significance for development of oral candidiasis.

Among all isolates tested in this study, the quantity of biofilm mass varied according to the *Candida* species. *C. albicans* and *C. dubliniensis* were the highest biofilm producers on silicone pads, followed by *C. tropicalis*, *C. norvegensis*, *C. parapsilosis*, *C. glabrata*, *C. krusei*, *C. lusitaniae*, and *C. kefyr*. Most studies have shown that the biofilm formation by clinical isolates of *Candida* was species dependent and generally the highest levels of biofilm formation were observed in *C. albicans* and the lowest in *C. glabrata* [5,20]. Notably, unlike *C. albicans* and other *Candida* species, *C. glabrata* is unable to generate filamentous forms which may contribute to the impaired ability of *C. glabrata* to form a biofilm [5]. The observations for higher quantities of biofilm production by *C. albicans* and lower biofilm production from the non filamenting *C. glabrata*, given the same standards of in vitro test conditions, remained true for the clinical isolates from our study. Indeed, for both strains collected orally or systemically, there was very little in the way of quantity or quality of biofilm production for *C. glabrata*. *C. albicans* produced the greatest quantity of biofilm regardless of the adhesion platform material or whether it was isolated from oral or invasive infection sites.

Interestingly, the differences in biofilm formation among *Candida* species on acrylic resin were less significant than biofilm formed on silicone. This fact may be attributed to the methodology used which was previously developed for biofilm formation on silicone pads [23,24]. The process of candidal adhesion to acrylic resins is complex. Previous studies have shown that a number of factors including the nutrient source, the sugar used for growth (glucose or sucrose), and the formation of pellicules from saliva or serum may

influence the adhesion and colonization of *Candida* [7,29].

We also used an in vivo *G. mellonella* infection model to evaluate the pathogenicity of oral and systemic *Candida* isolates. There are some benefits to using *G. mellonella* larvae as a model host to study *Candida* compare to other invertebrate models. For example, the larvae can be maintained at a temperature range from 25°C to 37°C, thus facilitating a number of temperature conditions under which fungi exist in either natural environmental niches or mammalian hosts. High temperatures can be prohibitive for the growth of *C. elegans* or *Drosophila infection* models. Our study used 37°C to mimic mammalian infection systems. *G. mellonella* also has the benefit of facile inoculation methods either by injection or topical application, where injection inoculation provides a means to deliver a precise amount of fungal cells [12,27,34]. By contrast, other systems, such as *C. elegans*, require infection through ingesting the pathogen. Since we included both *albicans* and non-*albicans* strains in our study we thought it prudent to use a model that ensured equal pathogen delivery rather than a model that would have an aversion to consuming some of the infecting agents.

As with the biofilm assays, the virulence levels of *Candida* isolates in *G. mellonella* were dependent on the species studied. Surprisingly, within the same species, oral isolates were as virulent as isolates from candidemia, the most common severe *Candida* infection. Previously, Cotter et al. [25] reported that it is possible to distinguish between different levels of pathogenicity within the genus *Candida* using *G. mellonella* larvae. We observed that *G. mellonella* showed mortality rates of 100% after injection with 10^5 cells of *C. albicans*, *C. dubliniensis*, *C. tropicalis*, and *C. parapsilosis*, 87% with *C. lusitaniae*, 37% with *C. norvegensis*, 25% with *C.*

krusei, 20% with *C. glabrata*, and 12% with *C. kefyr* over a 96 hour period of incubation at 37°C. Cotter et al. [25] verified mortality rates of 90% for *C. albicans*, 70% for *C. tropicalis*, 45% for *C. parapsilosis*, 20% for *C. krusei*, and 0% for *C. glabrata* over a 72 hour period of incubation at 30°C after the injection with 10⁶ cells of each *Candida* species. Probably, the virulence of the *Candida* strains in *G. mellonella* tested in this study were higher than the virulence of *Candida* strains observed by Cotter et al. [25] because of the difference of incubation temperature used. The temperature variations can affect gene expression and consequently the level of virulence of *Candida* strains [35].

Of note is that this is the first study to inoculate species of *C. lusitaniae*, *C. norvegensis* and *C. dubliniensis* in the *G. mellonella* model. Single isolates for *C. lusitaniae* and *C. norvegensis* and two isolates of *C. dubliniensis* were included in our study. *C. lusitaniae* is considered an emerging non-*albicans* *Candida* species and isolates show resistance to amphotericin B. *C. norvegensis* appears to be a rare cause of human infection and the most of the isolates are resistant to fluconazole [36,37]. There are limited data on the comparative virulence of *C. lusitaniae* and *C. norvegensis* in relation to *C. albicans*. In this study, *C. lusitaniae* and *C. norvegensis* were less virulent in *G. mellonella* than *C. albicans*.

Finally, in our study, *C. dubliniensis* isolates showed that the ability of biofilm formation and killing *G. mellonella* was similar to *C. albicans*. *C. dubliniensis* has been implicated in oropharyngeal candidiasis in HIV-infected patients, although it has also been isolated from other anatomical sites, including lungs, vagina, blood, and feces [38,39]. Despite the significant phenotypic and genotypic similarities shared between *C. albicans* and *C. dubliniensis*, the comparative virulence of the two species is clearly a very complex topic [40,41]. Borecká-Melkusová [42] verified that the biofilm formation in *C. albicans* was significantly lower than in *C. dubliniensis*, and Koga-Ito et al. [43] observed that the survival rate and dissemination capacity of *C. dubliniensis* in mice were lower than *C. albicans*.

Conclusion

In summary, in *Candida* spp., the ability of biofilm formation and virulence in the *G. mellonella* model were dependent on the species studied. For *C. albicans* the pathogenicity of oral isolates was similar to that of systemic isolates, suggesting that oral *Candida* infections should be taken seriously as they have the potential to be as equally morbid if they become systemic infections. Of note is that the penetration by *C. albicans* filaments is critical during the course of the infection in the *Galleria* tissue [17]. However, this model does not focus on invasion. Further studies are needed in order to study

the ability of oral isolates to colonize and penetrate tissues.

Acknowledgements

This study was supported by the São Paulo Council of Research - FAPESP, Brazil (Grant n° 09/52283-0) and Univ Estadual Paulista - PROPG/UNESP.

Author details

¹Department of Biosciences and Oral Diagnosis, Univ Estadual Paulista/UNESP, 777 Av. Eng. Francisco José Longo, São José dos Campos, SP 12245000, Brazil. ²Division of Infectious Diseases, Massachusetts General Hospital, 55 Fruit Street, Boston, MA 02114, USA. ³Emílio Ribas Institute of Infectious Diseases, 165 Av. Dr. Arnaldo, São Paulo, SP 01246900, Brazil.

Authors' contributions

JCJ and EM participated in the design, implementation, analysis, interpretation of the results and wrote this manuscript. JMAHS collected the *Candida* strains from the oral cavity of HIV-positive patients. SFGV, ACBPC, VMCR and AOCJ performed the identification and the antifungal susceptibility of oral *Candida* isolates. BBF participated in the in vitro biofilm model and helped to draft the manuscript. MM participated in the *G. mellonella* assays. JJC identified the systemic *Candida* isolates. All authors read and approved the final manuscript. The authors declare no conflict of interest.

Received: 15 July 2011 Accepted: 4 November 2011

Published: 4 November 2011

References

1. Donnelly RF, McCarron PA, Tunney MM: Antifungal photodynamic therapy. *Microbiological Research* 2008, **163**:1-12.
2. Johnson DW, Cobb JP: *Candida* infection and colonization in critically ill surgical patients. *Virulence* 2010, **1**:355-356.
3. Kourkoumpetis T, Manolakaki D, Imahos G, Chang Y, Alam HB, De Moya MM, Sailhamer EA, Mylonakis E: *Candida* infection and colonization among non-trauma emergency surgery patients. *Virulence* 2010, **1**:359-366.
4. Hamza OJM, Matee MI, Moshi MJ, Simon EN, Mugusi F, Mikx FH, Helderimana WH, Rijs AJ, van der Ven AJ, Verweij PE: Species distribution and *in vitro* antifungal susceptibility of oral yeast isolates from Tanzanian HIV infected patients with primary and recurrent oropharyngeal candidiasis. *BMC Microbiology* 2008, **8**:135.
5. Silva S, Henriques M, Oliveira R, Williams D, Azeredo J: *In vitro* biofilm activity of non-*Candida albicans* *Candida* species. *Current Microbiology* 2010, **61**:534-540.
6. Silva S, Negri M, Henriques M, Oliveira R, Williams D, Azeredo J: Silicone colonization by non-*Candida albicans* *Candida* species in the presence of urine. *Journal of Medical Microbiology* 2010, **59**:747-754.
7. Noumi E, Snoussi M, Hentati H, Mahdouani K, del Castillo L, Valentin E, Sentandreu R, Bakhrouf A: Adhesive properties and hydrolytic enzymes of oral *Candida albicans* strains. *Mycopathologia* 2010, **169**:269-278.
8. Nobile CJ, Nett JE, Andes DR, Mitchell AP: Function of *Candida albicans* adhesion Hwp1 in biofilm formation. *Eukaryotic Cell* 2006, **5**:1604-1610.
9. Seneviratne CJ, Silva WJ, Jin LJ, Samaranyake YH, Samaranyake LP: Architectural analysis, viability assessment and growth kinetics of *Candida albicans* and *Candida glabrata* biofilms. *Archives of Oral Biology* 2009, **54**:1052-1060.
10. Chamilos G, Lionakis MS, Lewis RE, Kontoyiannis DP: Role of mini-host models in the study of medically important fungi. *Lancet Infectious Diseases* 2007, **7**:42-55.
11. Mylonakis E, Aballay A: Worms and flies as genetically tractable animal models to study host-pathogen interactions. *Infection and Immunity* 2005, **73**:3833-3841.
12. Fuchs BB, Mylonakis E: Using non-mammalian hosts to study fungal virulence and host defense. *Current Opinion in Microbiology* 2006, **9**:346-351.
13. Mylonakis E: *Galleria mellonella* and the study of fungal pathogenesis: making the case for another genetically tractable model host. *Mycopathologia* 2008, **165**:1-3.

14. Bergin D, Murphy L, Keenan J, Clynes M, Kavanagh K: Pre-expose of yeast protects larvae of *Galleria mellonella* from a subsequent lethal infection by *Candida albicans* and is mediated by the increased expression of antimicrobial peptides. *Microbes and Infection* 2006, **8**:2105-2112.
15. Rowan R, Moran C, McCann M, Kavanagh K: Use of *Galleria mellonella* larvae to evaluate the *in vivo* anti-fungal activity of [Ag₂(mal)(phen)₃]. *Biometals* 2009, **22**:461-467.
16. Mowlds P, Kavanagh K: Effect of pre-incubation temperature on susceptibility of *Galleria mellonella* larvae to infection by *Candida albicans*. *Mycopathologia* 2008, **165**:5-12.
17. Fuchs BB, Eby J, Nobile CJ, El Khoury JB, Mitchell AP, Mylonakis E: Role of filamentation in *Galleria mellonella* killing by *Candida albicans*. *Microbes and Infection* 2010, **12**:488-496.
18. Badrane H, Cheng S, Nguyen MH, Jia HY, Zhang Z, Weisner N, Clancy CJ: *Candida albicans* IRS4 contributes to hyphal formation and virulence after the initial stages of disseminated candidiasis. *Microbiology* 2005, **151**:2923-2931.
19. Costa CR, Pastos XS, Souza LKH, Lucena PA, Fernandes OFL, Silva MRR: Differences in exoenzyme production and adherence ability of *Candida* spp. isolates from catheter, blood and oral cavity. *Revista do Instituto de Medicina Tropical de São Paulo* 2010, **52**:139-143.
20. Hasan F, Xess I, Wang X, Jain N, Fries BC: Biofilm formation in clinical *Candida* isolates and its association with virulence. *Microbes and Infection* 2009, **11**:753-761.
21. MähB B, Stehr F, Sichafer W, Neuber V: Comparison of standard phenotypic assays with a PCR method to discriminate *Candida albicans* and *Candida dubliniensis*. *Mycoses* 2005, **58**:55-61.
22. Clinical and Laboratory Standards Institute. Reference method for broth dilution antifungal susceptibility testing of yeasts: approved standard M27-A2. CLSO, Wayne, PA, USA; 2002.
23. Nobile CJ, Mitchell AP: Regulation of cell-surface genes and biofilm formation by the *C. albicans* transcription factor Bcr1p. *Current Microbiology* 2005, **15**:1150-1155.
24. Breger J, Fuchs BB, Aperis G, Moy TI, Ausubel FM, Mylonakis E: Antifungal chemical compounds identified using a *C. elegans* pathogenicity assay. *PLoS Pathogens* 2007, **3**:168-178.
25. Cotter G, Doyle S, Kavanagh K: Development of an insect model for the *in vivo* pathogenicity testing of yeasts. *FEMS Immunology and Medical Microbiology* 2000, **27**:163-169.
26. Brennan M, Thomas DY, Whiteway M, Kavanagh K: Correlation between virulence of *Candida albicans* mutants in mice and *Galleria mellonella* larvae. *FEMS Immunology and Medical Microbiology* 2002, **34**:153-157.
27. Fuchs BB, O'Brien E, El Khoury JB, Mylonakis E: Methods for using *Galleria mellonella* as a model host to study fungal pathogenesis. *Virulence* 2010, **1**:475-482.
28. Brown AJP, Odds FC, Gow NAR: Infection-related gene expression in *Candida albicans*. *Current Opinion in Microbiology* 2007, **10**:307-313.
29. Jin Y, Samaranyake LP, Samaranyake Y, Yip HK: Biofilm formation of *Candida albicans* is variably affected by saliva and dietary sugars. *Archives of Oral Biology* 2004, **49**:789-798.
30. Thein ZM, Seneviratne CJ, Samaranyake YH, Samaranyake LP: Community lifestyle of *Candida* in mixed biofilms: a mini review. *Mycoses* 2009, **52**:467-475.
31. Williams DW, Kuriyama T, Silva S, Malic S, Lewis MAO: *Candida* biofilms and oral candidosis: treatment and prevention. *Periodontology* 2000 2011, **55**:250-265.
32. Peleg AY, Tampakakis E, Fuchs BB, Eliopoulos GM, Moellering RC, Mylonakis E: Prokaryote-eukaryote interactions identified by using *Caenorhabditis elegans*. *Proceedings of the National Academy of Sciences USA* 2008, **105**:14585-14590.
33. Silva WJ, Seneviratne J, Parahitiyawa N, Rosa EAR, Samaranyake LP, Del Bel Crury AA: Improvement of XTT assay performance for studies involving *Candida albicans* biofilm. *Brazilian Dental Journal* 2008, **19**:364-369.
34. Cowen L, Singh SD, Köhler JR, Collins C, Zaas AK, Schell WA, Aziz H, Mylonakis E, Perfect JR, Whitesell L, Lindquist S: Harnessing Hsp90 function as a powerful, broadly effective therapeutic strategy for fungal infectious disease. *Proceedings of the National Academy of Sciences* 2009, **106**:2818-2823.
35. Mylonakis E, Moreno R, El Khoury JB, Idnurm A, Heitman J, Calderwood SB, Ausubel FM, Diener A: *Galleria mellonella* as a model system to study *Cryptococcus neoformans* pathogenesis. *Infection and Immunity* 2005, **73**:3842-3850.
36. Krcmery V, Barnes AJ: Non-*albicans* *Candida* spp. causing fungaemia: pathogenicity and antifungal resistance. *Journal of Hospital Infection* 2002, **50**:243-260.
37. Miceli MH, Diaz JA, Lee SA: Emerging opportunistic yeast infections. *The Lancet Infectious Diseases* 2011, **11**:42-151.
38. Sullivan DJ, Moran GP, Pinjon E, Al-Mosaid A, Stokes C, Vaughan C, Coleman DC: Comparison of the epidemiology, drug resistance mechanisms and virulence of *Candida dubliniensis* and *Candida albicans*. *FEMS Yeast Research* 2004, **4**:369-376.
39. Neppelenbroek KH, Campanha NH, Spolidorio DMP, Spolidorio LC, Séo RS, Pavarina AC: Molecular fingerprinting methods for the discrimination between *C. albicans* and *C. dubliniensis*. *Oral Diseases* 2006, **12**:242-253.
40. Sullivan D, Moran GP: Differential virulence of *Candida albicans* and *Candida dubliniensis*: A role for Tor1 Kinase? *Virulence* 2011, **2**:77-81.
41. Vilela MM, Kamei K, Sano A, Tanaka R, Uno J, Takahashi I, Ito J, Yarita K, Miyaji M: Pathogenicity and virulence of *Candida dubliniensis*: comparison with *C. albicans*. *Medical Mycology* 2002, **40**:249-257.
42. Borecká-Melkusová S, Bujdáková H: Variation of cell surface hydrophobicity and biofilm formation among genotypes of *Candida albicans* and *Candida dubliniensis* under antifungal treatment. *Canadian Journal of Microbiology* 2008, **54**:718-724.
43. Koga-Ito CY, Komiyama EY, Martins CAP, Vasconcellos TC, Jorge AOC, Carvalho YR, Prado RF, Balducci I: Experimental systemic virulence of oral *Candida dubliniensis* isolates in comparison with *Candida albicans*, *Candida tropicalis* and *Candida krusei*. *Mycoses* 2011, **19**:278-85.

doi:10.1186/1471-2180-11-247

Cite this article as: Junqueira et al.: Oral *Candida albicans* isolates from HIV-positive individuals have similar *in vitro* biofilm-forming ability and pathogenicity as invasive *Candida* isolates. *BMC Microbiology* 2011 **11**:247.

Submit your next manuscript to BioMed Central and take full advantage of:

- Convenient online submission
- Thorough peer review
- No space constraints or color figure charges
- Immediate publication on acceptance
- Inclusion in PubMed, CAS, Scopus and Google Scholar
- Research which is freely available for redistribution

Submit your manuscript at
www.biomedcentral.com/submit

