

# BMJ Open Associations between regular GP contact, diabetes monitoring and glucose control: an observational study using general practice data

David Youens <sup>1</sup>, Suzanne Robinson <sup>1</sup>, Jenny Doust,<sup>2</sup> Mark N Harris,<sup>3</sup> Rachael Moorin <sup>1,4</sup>

**To cite:** Youens D, Robinson S, Doust J, *et al*. Associations between regular GP contact, diabetes monitoring and glucose control: an observational study using general practice data. *BMJ Open* 2021;**11**:e051796. doi:10.1136/bmjopen-2021-051796

► Prepublication history and additional supplemental material for this paper are available online. To view these files, please visit the journal online (<http://dx.doi.org/10.1136/bmjopen-2021-051796>).

Received 29 March 2021  
Accepted 13 October 2021



© Author(s) (or their employer(s)) 2021. Re-use permitted under CC BY-NC. No commercial re-use. See rights and permissions. Published by BMJ.

<sup>1</sup>School of Population Health, Curtin University, Bentley, Western Australia, Australia

<sup>2</sup>Centre for Longitudinal and Life Course Research, School of Public Health, The University of Queensland, Brisbane, Queensland, Australia

<sup>3</sup>School of Accounting, Economics & Finance, Curtin University, Bentley, Western Australia, Australia

<sup>4</sup>School of Population & Global Health, University of Western Australia, Perth, Western Australia, Australia

## Correspondence to

David Youens;  
[david.youens@curtin.edu.au](mailto:david.youens@curtin.edu.au)

## ABSTRACT

**Objective** Continuity and regularity of general practitioner (GP) contacts are associated with reduced hospitalisation in type 2 diabetes (T2DM). We assessed associations of these GP contact patterns with intermediate outcomes reflecting patient monitoring and health.

**Design** Observational longitudinal cohort study using general practice data 2011–2017.

**Setting** 193 Australian general practices in Western Australia and New South Wales participating in the MedicinesInsight programme run by NPS MedicineWise.

**Participants** 22 791 patients aged 18 and above with T2DM.

**Interventions** Regularity was assessed based on variation in the number of days between GP visits, with more regular contacts assumed to indicate planned, proactive care. Informational continuity (claims for care planning incentives) and relational continuity (usual provider of care index) were assessed separately.

**Outcome measures** Process of care indicators were glycosylated haemoglobin (HbA1c) test underuse (8 months without test), estimated glomerular filtration rate (eGFR) underuse (14 months) and HbA1c overuse (two tests within 80 days). The clinical indicator was T2DM control (HbA1c 6.5% (47.5 mmol/mol)–7.5% (58.5 mmol/mol)).

**Results** The quintile with most regular contact had reduced odds of HbA1c and eGFR underuse (OR 0.74, 95% CI 0.67 to 0.81 and OR 0.78, 95% CI 0.70 to 0.86, respectively), but increased odds of HbA1c overuse (OR 1.20, 95% CI 1.05 to 1.38). Informational continuity was associated with reduced odds of HbA1c underuse (OR 0.53, 95% CI 0.49 to 0.56), reduced eGFR underuse (OR 0.62, 95% CI 0.58 to 0.67) and higher odds of HbA1c overuse (OR 1.48, 95% CI 1.34 to 1.64). Neither had significant associations with HbA1c level. Results for relational continuity differed.

**Conclusions** This study provides evidence that regularity and continuity influence processes of care in the management of patients with diabetes, though this did not result in the recording of HbA1c within target range. Research should capture these intermediate outcomes to better understand how GP contact patterns may influence health rather than solely assessing associations with hospitalisation outcomes.

## STRENGTHS AND LIMITATIONS OF THIS STUDY

- ⇒ The general practice data used allowed for assessment of both processes of care and clinical outcomes.
- ⇒ The general practice data used provided for a large cohort and allowed for control of a range of important covariates.
- ⇒ Information on practices not participating in the MedicinesInsight programme was unavailable, impacting interpretation.
- ⇒ The data collection used did not capture hospital use, preventing a mediation analysis capturing hospitalisation outcomes.

## INTRODUCTION

Continuity of care refers to a relationship between a practitioner and patient extending beyond a single episode of illness, implying some affiliation between patient and provider.<sup>1</sup> Continuity is typically measured by assessing whether a patient has repeated contact with one provider. Our group has assessed this on the basis of the regularity of general practitioner (GP) contact over time, with visits on a regular basis taken to indicate planned, proactive care. Continuity and regularity of GP contact are associated with hospitalisation outcomes among patients with diabetes.<sup>2–6</sup> Regularity and continuity are assumed to prevent hospitalisation and mortality via intermediate outcomes such as improved monitoring of the patient by the GP,<sup>7</sup> facilitating detection and responses to deteriorations in condition,<sup>4</sup> improved medical management and improved patient compliance.<sup>8–9</sup> Associations reported between these exposures and hospitalisation outcomes may be subject to unobserved confounding, as this research is typically observational.<sup>10</sup> Given the hypothesised mechanisms of action via intermediate outcomes, evidence concerning associations

with these intermediate outcomes is valuable. Intermediate outcomes are categorised here as (1) processes of care, that is, improved patient monitoring or appropriate prescribing and (2) clinical outcomes, that is, objective measures of patient health.<sup>11</sup> It has previously been demonstrated that in patients at risk of cardiovascular disease events, regular care and higher continuity were associated with improved statin use, providing some evidence regarding processes of care.<sup>12</sup>

As this work is conducted in Australia, a description of the role of the GP in this setting is warranted. GPs have major responsibility for prescribing and ordering of diagnostic tests; over 60% of encounters result in a prescription and about one-quarter result in diagnostic investigation.<sup>13</sup> In Australia GPs have a role as gatekeepers, with specialist care requiring a GP referral,<sup>14</sup> and referrals to allied health and hospital also common.<sup>13</sup> GPs operate on a fee-for-service basis with the Federal Government reimbursing GPs for each encounter via Medicare, Australia's universal public insurance programme, though providers may charge additional copayments.<sup>15</sup> Practices are private business, made up of one or more GPs operating as a business unit. A point relevant to continuity is that patients do not formally register with a specific GP or practice, instead people can switch providers at any time.<sup>14</sup> Meanwhile, there is a trend towards larger practice sizes.<sup>13</sup>

Much research in this area has relied on the use of administrative (financial) data collections. These provide comprehensive information on services rendered (eg, GP contacts, medication dispensations, hospitalisations) but often lack detailed clinical information.<sup>16</sup> Recently the information captured in general practice clinical information systems has started becoming available to researchers. These provide a potentially rich source of data, containing more detailed clinical information than administrative collections.<sup>17</sup> Importantly for the current work, these include pathology test results. Pathology test results are not generally available in administrative collections and in Australia, administrative data often do not clearly indicate the completion of specific pathology tests as national reimbursement databases often use a single code for multiple tests attracting the same reimbursement.<sup>17</sup>

The aim of the current work was to estimate the impact of GP regularity and continuity on (1) diabetes processes of care, as indicated by the completion of pathology tests according to clinical guidelines and (2) clinical outcomes, as indicated by glycosylated haemoglobin (HbA1c) values. This work focusses on type 2 diabetes mellitus (T2DM) due to its high prevalence,<sup>18</sup> the availability of comprehensive management guidelines<sup>19</sup> and the central role of the GP in its management.<sup>20</sup> Clinical guidelines are useful in such research as they outline clear regimens for prescribing and pathology testing, and targets on clinical indicators.<sup>19</sup> These guidelines do not intend to provide a prescriptive approach for all patients with a condition, considering the heterogeneous populations clinicians manage, but at the population level researchers can use

the recommendations in guidelines to compare management of conditions across different groups.

Studies have assessed the impact of sex and socioeconomic status on similar outcomes in cohorts with chronic heart disease.<sup>21 22</sup> These found that both male gender and lower socioeconomic status were associated with improved care processes (prescribing and completion of monitoring tests), but worse clinical outcomes (based on pathology test results). This highlights the importance of assessing both sets of outcomes to improve the understanding of potential impacts of any explanatory variables on patient management and health.

## METHODS

This was an observational longitudinal cohort study consisting of a secondary analysis of longitudinal general practice data. Reporting follows the REporting of studies Conducted using Observational Routinely-collected Data (RECORD) statement.<sup>23</sup>

## Data

Data were a collection of person-level deidentified general practice clinical information system data, called MedicineInsight, collated by NPS MedicineWise, which is a non-profit organisation aiming to promote the quality use of medicines.<sup>24</sup> MedicineInsight was established in 2011 with funding by the Australian Government, with the primary aim of supporting postmarket medication surveillance.<sup>24</sup> General practices are recruited to MedicineInsight on a practice opt-in, patient opt-out basis, meaning that when a practice opts in data on all GPs and all patients (except those who explicitly opt-out) will become available. Following recruitment, historical patient data are extracted, deidentified, encrypted and transmitted to the primary care database with ongoing monthly data extracts. Data include patient demographics, diagnoses, prescriptions, pathology results and immunisations, and more.<sup>17</sup> As of October 2018, MedicineInsight had recruited 662 practices across Australia (8.2% of all practices).<sup>24</sup> This study used data from all participating practices in Western Australia (N=53) and New South Wales (N=140) from the start of the collection up to late 2017. Compared with the general population visiting general practices in Australia, patients captured in MedicineInsight data are slightly more likely to be female (55.7% vs 52.4%), are similarly likely to be Indigenous (2.6% vs 2.9%), have a similar distribution of age and socioeconomic status, though some states are over-represented compared with others.<sup>25</sup> In some cases, multiple physical practices share a Clinical Information System (CIS), and in these cases the multiple practices are considered a single 'site' within the database regardless of the number of physical practices. Approximately 90% of sites are composed of a single practice.<sup>24</sup> As part of their participation in the programme, practices receive information on their own care delivery and prescribing, including benchmarking against other providers and

practices, so as to support quality improvement in primary care.<sup>26</sup> MedicineInsight data can be used for beneficial research following approval by the Independent Data Governance Committee.<sup>27</sup>

### Design

The data were organised into a longitudinal design to reduce risk of reverse causation. A pre-exposure period ran from 1 January 2011 to 28 February 2015, during which the cohort was identified and baseline patient characteristics assessed; an exposure period from 1 March 2015 to 29 February 2016, during which exposure variables were ascertained; and outcomes assessed during a follow-up period from 1 March 2016 to 30 June 2017. A diagram is provided in online supplemental file 1.

### Cohort

A cohort with T2DM was captured based on recorded diagnoses and the reasons for prescription with each prescription record. These fields were text strings and included records generated by clinical information systems (ie, drop down menus) and records entered manually by GPs, hence there was potential for typing errors and a need to manually verify diagnosis data. As there were millions of records a procedure to expedite manual review was used, explained in online supplemental file 2.

Those over 80 were excluded, since HbA1c goals differ for older patients with higher risk of hypoglycaemia.<sup>28</sup>

### Exposures

Regularity of GP contact was based on all contacts with GPs during the exposure period, and refers to the distribution of these contacts over time. Regularity was calculated using a previously described index, based on the variation in the number of days between GP contacts.<sup>3</sup> In brief, for each GP contact the number of days since the prior contact was counted, and the coefficient of variation in this number of days calculated. An index (R) was calculated by  $R=1/(1+(\text{coefficient of variation} (\text{days between visits})))$ . This ranges from 0 (least regular) to 1 (most regular). For example, if a patient had four GP contacts within a year, three of which were in January and one in December, they would have a lower regularity score than a patient with four visits in January, March, August and December. This index was split into quintiles based on the distribution within the cohort.

Two exposures assessed continuity of care. The first indicated whether a GP had claimed one of a set of chronic disease management (CDM) financial incentives reimbursed via Medicare during the exposure period including preparation or review of a GP management plan, co-ordination of team care arrangements or contribution to a multidisciplinary care plan.<sup>29</sup> Claiming these items in relation to a patient is taken to indicate informational continuity (ie, information on past events and circumstances is available so appropriate care can be provided,<sup>1</sup> following Ride *et al*<sup>10</sup>

The Usual Provider of Care (UPC) index was also used. This captures the proportion of all GP visits made to the usual provider during the exposure period<sup>30</sup> (ie, the provider the patient visited most often). For example, if a patient visits provider A three times during the exposure period and provider B once, their UPC score will be 0.75. This is a measure of interpersonal continuity (an ongoing relationship between the patient and provider)<sup>1</sup> UPC was categorised as low (0–0.39), intermediate (0.4–0.59), high (0.6–0.99) and perfect (UPC=1). Though this is usually categorised, cut-off values differ<sup>6,7</sup> with no gold standard. This index is included as visit-based measures are the most commonly used continuity measures. In the current data patient identifiers are practice-specific, meaning that a patient visiting two separate practices will appear as two separate patients, while visits to practices not participating in MedicineInsight are not captured. If a patient visits multiple practices, of which only one participates in MedicineInsight, they may record a high UPC despite having lower continuity in reality. This is referred to as ‘practice-specific UPC’.

The cohort was restricted to patients with at least three GP contacts as the regularity score cannot be calculated with fewer than three contacts.

### Outcomes

Outcomes were processes of care and clinical indicators developed using pathology testing records. These records were electronically coded in contrast to the free-text diagnosis fields described earlier. We assessed indicators concerning management of HbA1c, as one of the most important markers of diabetes control, and the estimated glomerular filtration rate (eGFR), as a marker of the development of one of the most important diabetes complications.

Processes of care relate to pathology testing within timeframes recommended by guidelines.<sup>19</sup> These recommend HbA1c testing every 6 months, with a maximum frequency of every 3 months. Guidelines also recommend testing the eGFR every twelve months (along with other tests not assessed here). Three process of care outcomes were defined. The first two were underuse of HbA1c, defined as any 8-month period during follow-up without an HbA1c test; and underuse of eGFR, defined as any 14-month period during the follow-up without a test. Underuse represents potentially inappropriate care as changes in health and opportunities to adjust treatment may be missed. The third was overuse of HbA1c, defined as two tests within 80 days. Overuse may be problematic as HbA1c reflects glycaemic control over 3 months (the half-life of red blood cells)<sup>31</sup> hence tests within this window are not informative. More frequent use represents wasted resources<sup>32</sup> and may impact clinical decision making. For example, where medications are changed following a test indicating poor glycaemic control, a follow-up test within 3 months may incorrectly suggest that the treatment has not worked as the effects of the medication change will not yet be fully evident, potentially leading

to further unnecessary medication changes and risk of hypoglycaemia.<sup>32</sup>

The clinical indicator was an HbA1c result within treatment targets. Participants were flagged as being outside or within target range (6.5% (47.5 mmol/mol)–7.5% (58.5 mmol/mol)) on the first test during the follow-up.<sup>19</sup> The cohort here differed, as those without an HbA1c test during follow-up were excluded. Treatment targets may be modified for some patients based on clinical judgement. Patient-specific treatment targets are not available in the data, however, and at the cohort level an overall indicator was considered appropriate as adjustments to targets for some patients are unlikely to systematically bias analyses. A variable indicating an HbA1c result within target on any test during the follow-up was not considered as this would depend on both clinical outcomes and processes of care (number of tests).

### Covariates

Patient characteristics included sex, age, rurality (Accessibility and Remoteness Index of Australia (ARIA)),<sup>33</sup> state of residence, Indigenous and smoking status. Baseline HbA1c was based on the final test in the pre-exposure period. A measure of comorbidity was calculated based on the RxRisk comorbidity index.<sup>34</sup> The RxRisk index identifies up to 46 conditions, based on an individual having prescriptions for medications pathognomic for these conditions. The index provides an integer ranging from 0 to 46 indicating the number of RxRisk conditions present, based on 5 years of prescription data prior to the exposure period. The frequency of GP contacts in the exposure period was also captured, that is, the count of visits made by the patient to the general practice captured in the CIS. Categories for all covariates are displayed in [table 1](#). Missing values were treated as a separate category so as to prevent data loss in regression models.

Practice-level characteristics included the Socio-Economic Index for Areas-Index of Relative Social Disadvantage decile of the practice<sup>35</sup> and practice rurality (ARIA). Practice size was based on the number of GPs working at each practice.

### Statistical analysis

Descriptive statistics were generated for sociodemographics, health service use variables, outcomes and practice characteristics.

Data were multilevel, with patients nested within practices. Patients may see multiple GPs at one practice hence patients were not nested within providers. Patients may also visit multiple practices, but in the data patient IDs were practice-specific, hence patients could not be tracked across practices. Random intercept logistic regression models were used, common in analysing general practice data.<sup>36 37</sup> The same analysis was applied to all outcomes. Intraclass correlation coefficients (ICCs) were calculated to determine the proportion of variation in outcomes determined by the practice level by fitting

**Table 1** Characteristics of cohort and practices contributing data

Variable		N	%
Sociodemographics			
Sex	Male	12 349	54.18
	Female	10 437	45.79
	Not stated¶	<5	–
Age	20–29	167	0.73
	30–39	826	3.62
	40–49	2301	10.10
	50–59	4951	21.72
	60–69	7792	34.19
	70–79	6754	29.63
Rurality	Major cities	14 391	63.14
	Inner regional	5797	25.44
	Outer regional	2216	9.72
	Remote	256	1.12
	Very remote	50	0.22
	Missing	81	0.36
State	New South Wales	15 847	69.53
	Western Australia	6944	30.47
Indigenous status	Aboriginal/TSI	865	3.80
	Neither	18 781	82.41
	Not stated	3145	13.80
Smoking	Smoker	2826	12.40
	Ex-smoker	8230	36.11
	Non-smoker	10 652	46.74
	Not stated	1083	4.75
Health service use (exposure period)*			
Frequency	0–4	8276	36.31
	5–9	8161	35.81
	10–14	3559	15.62
	15+	2795	12.26
Practice-specific UPC	0–0.39	6657	29.21
	0.4–0.59	5231	22.95
	0.6–0.99	3507	15.39
		7396	32.45
CDM† item	No	8125	35.65
	Yes	14 666	64.35
Rx-risk comorbidity conditions‡	0	874	3.83
	1–2	3852	16.90
	3–4	5577	24.47
	5–6	5339	23.43
	7+	7149	31.37
Outcome variables (outcome period)§			
HbA1c overuse	No	19 525	85.67
	Yes	3266	14.33
HbA1c underuse	No	9129	40.06
	Yes	13 662	59.97

Continued

**Table 1** Continued

Variable		N	%
eGFR underuse	No	16 719	73.36
	Yes	6072	26.64
HbA1c within target on first test in follow-up	No	12 708	55.76
	Yes	5667	24.87
	No test	4416	19.38
<b>Total</b>		22 791	100
Practice characteristics			
State	New South Wales	140	72.54
	Western Australia	53	27.46
SEIFA decile	1 (most disadvantage)	9	4.66
	2	18	9.38
	3	22	11.46
	4	24	12.50
	5	14	7.29
	6	34	17.71
	7	§	4.17
	8	13	6.74
	9	26	13.54
	10 (least disadvantage)	26	13.54
	Missing	<5	–
Practice rurality	Major cities	125	64.77
	Inner regional	39	20.21
	Outer regional	23	11.92
	Remote/very remote	*	3.11
No of GPs	1	68	35.23
	2–9	63	32.64
	10–19	45	23.32
	20+	17	8.81
No of patients	<750	38	19.69
	750–999	20	10.36
	1000–1499	54	27.98
	1500–1999	29	15.03
	2000+	52	26.94
<b>Total</b>		193	100

\*March 2015–February 2016.

†Reimbursement to GP for certain care coordination activities.

‡Over 5-year period to end of exposure.

§March 2016–June 2017.

¶Where cell is <5, other values on variable altered to protect confidentiality.

CDM, Chronic Disease Management; eGFR, estimated glomerular filtration rate; GP, general practitioner; HbA1c, glycosylated haemoglobin; SEIFA, Socio-Economic Index for Areas; TSI, Torres Strait Islander; UPC, Usual Provider of Care.

an empty model (no explanatory variables) using the `xtmelogit` command in Stata V.14.<sup>38</sup>

Models included all patient-level exposures and covariates described under those sub-headings. For the

assessment of HbA1c overuse and underuse, two separate logistic regression models were used rather than an ordered logistic regression characterising underuse/overuse/appropriate use. This was because drivers of overuse and underuse may have differed, and because there was no clear ordering of these three levels, that is, neither underuse or overuse could be considered closer to appropriate use.

### Effect modification

Effect modification was assessed in relation to the number of providers and patient comorbidity variables, as these practice and patient characteristics may influence patterns of GP contact and/or the outcomes examined. Each of the four models in the main analysis (ie, one model per outcome) was repeated twice, once including interactions with the number of providers (for all three exposure variables), and once with the exposures interacted with patient comorbidity. Each of these eight unrestricted models was compared with the equivalent restricted model (ie, the main analysis for each outcome) using likelihood ratio tests using Stata's `lrtest` command. Where the likelihood ratio test was significant, the full output of the unrestricted model was reported and interpreted.

### Sensitivity analysis: all diabetes

Many of the diagnosis records mentioned diabetes without stating the type, meaning that there were likely some patients with type 2 diabetes excluded from the study cohort (as only those with a clear indication of type 2 diabetes were included). As a sensitivity analysis, we identified the cohort of all patients with diabetes (type 1, type 2 and where type was unspecified), as the outcomes assessed here are also relevant to type 1 diabetes.<sup>39 40</sup> All analyses were repeated for this cohort to understand if this uncertainty over diabetes type may have influenced results.

### Patient and public involvement

Patients were not involved in the design or conduct of this research. NPS MedicineWise maintain a web page for consumers with information on why and how their data may be used along with details of approved studies, and provide information to participating practices to display in waiting areas.

## RESULTS

### Cohort characteristics

Table 1 displays descriptive statistics of the 22 791 individuals and 193 practices included. A flow chart detailing cohort selection is included as online supplemental file 1. Most were male (54.2%), lived in major cities (63.1%), were non-Indigenous (82.4%) and were non-smokers or ex-smokers (82.9%), while the largest age group was 60–69 (34.2%). Almost all had medications for at least one comorbidity (96.2%). Fourteen per cent had

**Table 2** Univariate relationships between three exposures and each outcome

Exposure		Process of care outcomes			Clinical outcome
		HbA1c underuse	HbA1c overuse	eGFR underuse	HbA1c within target on first test in f/up
Regularity	Least	65.77	12.33	31.66	29.73
	2	59.35	14.44	25.95	31.17
	3	57.31	14.90	24.77	31.88
	4	58.60	15.38	23.94	30.09
	Most	58.70	14.61	26.89	31.28
Significance		$\chi^2(4)=84.8, p<0.001$	$\chi^2(4)=20.5, p<0.001$	$\chi^2(4)=85.2, p<0.001$	$\chi^2(4)=5.4, p=0.245$
Practice-specific UPC index	0–0.39	56.21	17.65	24.83	31.51
	0.4–0.59	58.67	15.85	26.34	30.69
	0.6–0.99	63.05	12.69	29.54	30.76
	1	62.74	11.05	27.11	30.35
Significance		$\chi^2(3)=80.2, p<0.001$	$\chi^2(3)=142.3, p<0.001$	$\chi^2(3)=27.3, p<0.001$	$\chi^2(3)=1.9, p=0.598$
CDM*	No	71.54	9.83	34.54	29.75
	Yes	53.52	16.82	22.27	31.36
Significance		$\chi^2(1)=707.6, p<0.001$	$\chi^2(1)=207.9, p<0.001$	$\chi^2(1)=402.5, p<0.001$	$\chi^2(1)=4.9, p=0.027$

For process of care outcomes n=22 791, for the clinical outcome n=18 381. Displaying % of each group with outcome.

\*Reimbursement to GP for certain care coordination activities.

CDM, chronic disease management; eGFR, estimated glomerular filtration rate; GP, general practitioner; HbA1c, glycosylated haemoglobin; UPC, Usual Provider of Care.

records indicating HbA1c overuse during the follow-up, 60.0% underuse and 26.7% had records indicating eGFR underuse. One-quarter (24.9%) had an HbA1c result within target on the first test during follow-up while 19.4% had no HbA1c test; of those with at least one test during follow-up the result on the first test was within target for 30.8%. Most practices (64.8%) were in major cities, 35.2% were solo practices and 8.8% had over 20 GPs. Both the regularity and UPC measures showed significant, positive correlations between the exposure and follow-up periods, indicating these measures were stable over time (online supplemental file 3).

Univariate analyses are presented in table 2. Informational continuity was associated with an increased likelihood of recording an HbA1c result within target (31.4% among those with a CDM record compared with 29.8% among those without,  $p=0.027$ ), though relational continuity and regularity were not. All exposures were associated with each process of care measure. Underuse of HbA1c and eGFR were each most likely among the least regular quintile and those without a CDM item, while HbA1c overuse showed the reverse. UPC results differed, HbA1c and eGFR underuse were most likely among the high relational continuity group, while HbA1c overuse was most likely among the low relational continuity group. There were weak correlations between each pair

of exposure variables during the exposure period (online supplemental file 3).

### Model outcomes

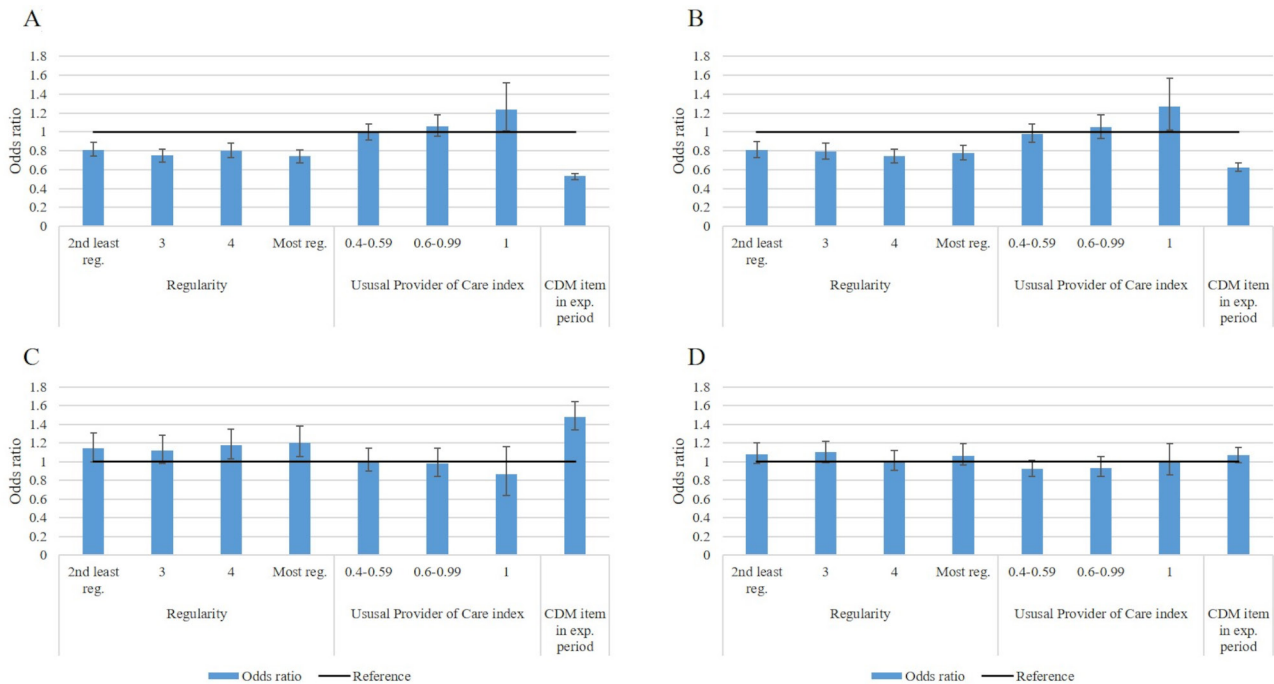
ICCs for each outcome are presented in table 3. The practice level explained 11.7% of the variation in HbA1c underuse, 15.5% of HbA1c overuse, 21.5% of eGFR underuse and 1.6% of the HbA1c within target range outcome.

Model outputs, displaying ORs for exposures of interest only, are presented in figure 1 with full outputs in online supplemental file 4. Higher regularity (adjusted for practice-specific UPC, CDM and other covariates) was associated with reduced odds of HbA1c underuse (OR for most regular group 0.74, 95% CI 0.67 to 0.81) and

**Table 3** Intraclass correlation coefficients (ICCs)

Outcome variable	ICC
HbA1c underuse	0.117
HbA1c overuse	0.155
eGFR underuse	0.215
HbA1c within target	0.016

eGFR, estimated glomerular filtration rate; HbA1c, glycosylated haemoglobin.



**Figure 1** Outputs of regression models, ORs for exposures of main interest only. Outcomes represented are: (A) HbA1c underuse, (B) eGFR underuse, (C) HbA1c overuse and (D) recording a HbA1c value within target range on first measure during follow-up. Bars represent ORs while black lines represent reference values, that is, the least regular, lowest continuity and no chronic disease management ((CDM) item groups. eGFR, estimated glomerular filtration rate; HbA1c, glycosylated haemoglobin.

eGFR underuse (OR for most regular group 0.78, 95% CI 0.70 to 0.86). A dose–response relationship was not observed. Higher regularity was also associated with higher odds of HbA1c overuse (OR for most regular group 1.20, 95% CI 1.05 to 1.38). For the outcome of HbA1c result within target, ORs for regularity were positive (ie, increased odds of a result within targets) but non-significant. Similar patterns were seen for informational continuity, which was associated (adjusted for regularity, practice-specific UPC and other covariates) with reduced odds of HbA1c underuse (OR 0.53, 95% CI 0.49 to 0.56), reduced eGFR underuse (OR 0.62, 95% CI 0.58 to 0.67) and higher odds of HbA1c overuse (OR 1.48, 95% CI 1.34 to 1.64). This exposure also had a non-significant positive association with recording HbA1c within target (OR 1.07, 95% CI 0.99 to 1.15). Results differed for the practice-specific UPC index. The perfect UPC group (adjusted for regularity, CDM and other covariates) was more likely to report HbA1c underuse (OR 1.24, 95% CI 1.01 to 1.52) and eGFR underuse (OR 1.27 95% CI 1.02 to 1.57) though no other significant associations were observed.

Of the covariates, age reported significant associations with all outcomes as did comorbidity, socioeconomic status was associated with the three process of care indicators, and indigenous status was associated with all outcomes apart from HbA1c overuse. Results for these and other covariates are available in online supplemental file 4.

### Effect modification

Outputs of likelihood ratio tests are provided in online supplemental file 3 along with full outputs of unrestricted models in cases where the likelihood ratio test was significant. The only interaction with a significant likelihood ratio test was the model of eGFR underuse with practice size as the effect modifier ( $\chi^2(21)=36.55$ ,  $p=0.019$ ). In this model the only significant interaction term was the interaction of having a CDM item with the largest practice size (20+ providers). The OR for this interaction was 0.71 ( $p=0.001$ ) indicating that the negative association between having a CDM completed and eGFR underuse (ie, a beneficial association) was greater where the practice size was larger.

### Sensitivity analysis

Outcomes of sensitivity analysis are reported in online supplemental file 5. The cohort of all people with diabetes (irrespective of type) was 34% larger than the T2DM cohort ( $n=30\,453$ ). Cohort characteristics were similar, with relative sizes of groups differing by 1%–2%.

In terms of model outcomes, the ORs for regularity did not change substantially on any outcome, with the largest being a change of 0.04 for one level of regularity in relation to HbA1c overuse, and significance mostly unchanged (the exception being one additional level of regularity being significant in relation to HbA1c overuse). ORs for the CDM items also matched the main analysis, with the exception of the HbA1c within target outcome for which the positive association became significant



(likely due to the larger cohort size). Regarding practice-specific UPC, ORs for HbA1c overuse outcomes remained non-significant in all cases. Associations with HbA1c and eGFR underuse were non-significant at all levels in contrast to the T2DM cohort for which perfect UPC had a positive association with these outcomes. The moderate UPC group had a negative association with the likelihood of recording HbA1c within target range though the high and perfect practice-specific UPC groups had no such associations; whereas in the T2DM cohort no level of UPC was associated with this outcome.

## DISCUSSION

Regularity of GP contact was associated with processes of care, as was informational continuity. Interpersonal continuity measured via practice-specific UPC was generally not associated with these outcomes, with the exception of perfect UPC (all visits to the same GP) being associated with underuse of HbA1c and eGFR. The clinical outcome, HbA1c within target, was not significantly associated with any exposure in the main analysis.

The practice level accounted for a smaller proportion of the variation in HbA1c results than it did for processes of care. This makes sense as the GP/practice has a direct role in test ordering while blood glucose is determined by factors over which the GP has a more indirect influence (diet,<sup>41</sup> lifestyle,<sup>42</sup> medication adherence,<sup>43</sup> genetics,<sup>44</sup> etc). This may also partially explain the lack of significant association most exposures had with HbA1c level. Similarly, GPs may decide to adopt different treatment targets for some patients. Although associations with this outcome were non-significant, ORs did consistently point in the same direction as for process of care measures, and non-significant associations may reflect a modest effect size and insufficient power for this outcome rather than clear evidence of a null effect. The fact that the CDM item exposure was associated with this outcome in the sensitivity analysis supports this.

Continuity of care was assessed using two measures with contrasting results. Informational continuity reported results in line with regularity, while relational continuity differed; perfect UPC was associated with an increased likelihood of monitoring tests being missed. The limitation of the UPC here is that patient identifiers were practice specific and not all practices participate in MedicineInsight, hence some of those with high or perfect UPC may also have visited non-participating GPs and in reality had lower continuity than observed here. Meanwhile the baseline group is made up of people with all (recorded) visits to the same practice even if different providers were seen, hence interpretation of this index differs compared with most studies. The NPS are undertaking work to allow for observation of patients across practices,<sup>24</sup> which would allow UPC and other indices to be calculated more accurately. In 2017 53% of patients in Australia visited only one practice, 30% visited two, with the remainder visiting three or more.<sup>45</sup> Studies of

patient preferences have assessed whether patients value informational or relational continuity more highly, with conflicting results.<sup>46 47</sup> There was some evidence that the impact of CDM activities may be modified by practice size, with the benefits in terms of eGFR testing greater for larger practices, suggesting that shared care plans may become more important in settings where interpersonal continuity is more difficult to achieve. In practice relational continuity implies the presence of informational continuity, so there is never a 'trade-off' between these. Trade-offs may exist between relational continuity and access (eg, policies which promote rapid GP access may reduce the chance of seeing the same GP)<sup>48</sup> and in this context evidence regarding the value of relational continuity in isolation from informational continuity may be meaningful.

Although this is the first work to assess associations between regular GP contacts and diabetes control, some papers have assessed the effects of continuity on comparable outcomes, with inconsistent results. One large-scale study set in Israel found that continuity (UPC) had no effect on diabetes monitoring, but was associated with lower HbA1c.<sup>49</sup> In this study, patients could be observed visiting different practices, interpretation of UPC differed from the current work. A study from the USA using a similar continuity measure was set at a single practice, so was comparable in the measurement of relational continuity. This study reported similar findings to the work from Israel, that is, continuity had no effect on monitoring tests but led to improvements in HbA1c.<sup>50</sup> However, another single-site study from the USA found that having a personal physician did not influence the odds of a healthy HbA1c result.<sup>51</sup> Comparisons across settings are challenging due to differences in payment mechanisms which may influence pathology ordering, potential financial barriers faced by patients influencing visit patterns, and other contextual differences.

This study found contrasting results for HbA1c underuse and overuse outcomes. Increased regularity and informational continuity were each associated with a reduced likelihood of underuse but an increased likelihood of overuse, making interpretation challenging. Effect sizes were larger in relation to the underuse outcomes (based on absolute coefficient values), so the beneficial effects for one outcome may outweigh the negative effects on the other. Of course, this assumes that HbA1c underuse and overuse are equally problematic, which may not be the case. Nonetheless, for the eGFR test, where overuse is not an issue in the same way, beneficial associations were observed. We did not develop an overall indicator of appropriate/inappropriate testing. As the drivers of overuse and underuse appear to differ, we considered that any attempt to produce a single measure would likely obfuscate this information and provide less meaningful results. These results indicate that patterns of primary care contact may be influential in terms of the quality of care received by patients. Previous studies have suggested associations between continuity/regularity of



care and hospitalisation outcomes,<sup>2 4 6</sup> The current work adds to this literature by presenting some evidence for pathways via which such associations may occur, though further research may be required to understand the discrepancy in findings between process of care outcomes and the clinical indicator assessed. At the practice level, these findings reinforce the need for practices to maintain continuity with patients to support the delivery of quality care.

### Strengths and limitations

This work is strong in several respects. The availability of pathology test ordering and results supported the assessment of multiple intermediate outcomes. The MedicineInsight data provided a large study cohort and important covariates at the patient and practice levels. The longitudinal design prevents reverse causation bias.

There are also limitations to this analysis. First, the lack of visit data on visits to practices not participating in MedicineInsight is a limitation, as discussed previously, which impacts the interpretation of UPC. As the data were not generated for research purposes, it is inevitable that some potentially useful information (eg, patient health behaviours and attitudes) were mostly unavailable (except smoking status). This work aims to better understand causal pathways influencing hospitalisation outcomes. Being a general practice collection, MedicineInsight does not include information on hospitalisations, hence it was not possible to investigate the role of these intermediate outcomes as mediators.

Results reported here may differ outside of the Australian context. Different registration systems, financial barriers, payment systems and diagnostic test ordering approaches must be considered when considering relationships elsewhere. Although findings of the sensitivity analysis capturing all people with diabetes were generally similar to the main analysis of T2DM, there were some minor differences in results. This may suggest that findings here may not be generalisable to cohorts with type 1 diabetes.

Missing data can be an issue in any study making secondary use of routinely collected data. We have managed this issue by using the fields least likely to suffer from missing data for our exposures and outcomes of main interest. Our exposures, being patterns of GP contact, only rely on a record being created for each GP visit, while the pathology data used for outcomes are transmitted electronically from pathology labs to practice CIS's and results stored in the correct fields. Missing information on covariates was managed by recoding these records as a separate category to prevent data loss.

Finally, in interpreting the outcome of HbA1c results, patients with no HbA1c tests during follow-up were necessarily omitted, which could bias findings. If lower regularity is associated with both a reduced likelihood of HbA1c testing being performed (which these results suggest), and poorer HbA1c control, the omission of

those patients with no tests during follow-up would bias results towards a null or negative effect.

### CONCLUSION

Previous works have demonstrated associations between regularity/continuity of GP contact and hospitalisation outcomes, with authors hypothesising that any beneficial effects result from improved patient monitoring and treatment. This analysis demonstrated that among patients with T2DM, more regular GP contact was associated with a reduced likelihood of monitoring tests being missed, but this is balanced against an increased likelihood of overtesting, which may represent inefficient use of resources and potentially suboptimal patient care. Overall regular GP contacts were associated with small, non-significant associations with the likelihood of recording HbA1c results within a healthy range. Similar results were observed in relation to informational continuity. It is plausible that associations with hospital and emergency department outcomes occur via these intermediate outcomes.

**Twitter** Suzanne Robinson @Robinsonsuz

**Acknowledgements** The authors wish to acknowledge the NPS for provision of data, and the practices and patients whose data contributed to this study. We also thank Cameron Wright for his advice.

**Contributors** DY designed the study, performed analyses, wrote the first version of the manuscript and is the guarantor. RM and JD contributed to study design, analyses and choice of outcomes from clinical guidelines. MNH provided advice on statistical issues. SR advised on analyses and interpretation of findings. All authors reviewed manuscript drafts and approved the final version.

**Funding** This work was supported by the National Health and Medical Research Council (APP 1078345) and a PhD scholarship via the Australian Government Research Training Programme.

**Competing interests** RM and MNH report grants from the National Health and Medical Research Council (Australia) during the conduct of the study. DY reports grants from the Research Training Programme (Australia) during the current study.

**Patient consent for publication** Not applicable.

**Ethics approval** Approvals were granted by the Curtin University Human Research Ethics Committee, HRE2017-0579, and the MedicineInsight independent external Data Governance Committee on 22 August 2017, reference 012-2017.

**Provenance and peer review** Not commissioned; externally peer reviewed.

**Data availability statement** Data may be obtained from a third party and are not publicly available. Data supporting these findings can be requested from the custodians of the relevant data collection. Restrictions placed by the data custodians mean that data used for this study cannot be made publicly available.

**Supplemental material** This content has been supplied by the author(s). It has not been vetted by BMJ Publishing Group Limited (BMJ) and may not have been peer-reviewed. Any opinions or recommendations discussed are solely those of the author(s) and are not endorsed by BMJ. BMJ disclaims all liability and responsibility arising from any reliance placed on the content. Where the content includes any translated material, BMJ does not warrant the accuracy and reliability of the translations (including but not limited to local regulations, clinical guidelines, terminology, drug names and drug dosages), and is not responsible for any error and/or omissions arising from translation and adaptation or otherwise.

**Open access** This is an open access article distributed in accordance with the Creative Commons Attribution Non Commercial (CC BY-NC 4.0) license, which permits others to distribute, remix, adapt, build upon this work non-commercially, and license their derivative works on different terms, provided the original work is properly cited, appropriate credit is given, any changes made indicated, and the use is non-commercial. See: <http://creativecommons.org/licenses/by-nc/4.0/>.

## ORCID iDs

David Youens <http://orcid.org/0000-0002-4296-4161>Suzanne Robinson <http://orcid.org/0000-0001-5703-6475>Rachael Moorin <http://orcid.org/0000-0001-8742-7151>

## REFERENCES

- Haggerty JL, Reid RJ, Freeman GK, *et al.* Continuity of care: a multidisciplinary review. *BMJ* 2003;327:1219–21.
- Moorin RE, Youens D, Preen DB, *et al.* Association between continuity of provider-adjusted regularity of general practitioner contact and unplanned diabetes-related hospitalisation: a data linkage study in New South Wales, Australia, using the 45 and Up Study cohort. *BMJ Open* 2019;9:e027158.
- Youens D, Harris M, Robinson S, *et al.* Regularity of contact with GPs: measurement approaches to improve valid associations with hospitalization. *Fam Pract* 2019;36:650–6.
- Chen C, Cheng S. Better continuity of care reduces costs for diabetic patients. *American Journal of Managed Care* 2019;6:420–7.
- Comino EJ, Islam MF, Tran DT, *et al.* Association of processes of primary care and hospitalisation for people with diabetes: a record linkage study. *Diabetes Res Clin Pract* 2015;108:296–305.
- Hong J-S, Kang H-C. Continuity of ambulatory care and health outcomes in adult patients with type 2 diabetes in Korea. *Health Policy* 2013;109:158–65.
- Katz DA, McCoy KD, Vaughan-Sarrazin MS. Does greater continuity of Veterans administration primary care reduce emergency department visits and hospitalization in older veterans? *J Am Geriatr Soc* 2015;63:2510–8.
- Gill JM, Mainous AG. The role of provider continuity in preventing hospitalizations. *Arch Fam Med* 1998;7:352–7.
- Romaire MA, Haber SG, Wensky SG, *et al.* Primary care and specialty providers: an assessment of continuity of care, utilization, and expenditures. *Med Care* 2014;52:1042–9.
- Ride J, Kasteridis P, Gutacker N, *et al.* Impact of family practice continuity of care on unplanned Hospital use for people with serious mental illness. *Health Serv Res* 2019;54:1316–25.
- Mainz J. Defining and classifying clinical indicators for quality improvement. *Int J Qual Health Care* 2003;15:523–30.
- Youens D, Doust J, Robinson S. Regularity and continuity of GP contacts and use of statins among people at risk of cardiovascular events. *Journal of General Internal Medicine* 2020.
- Duckett S, Wilcox S. *The Australian health care system*. 5th ed. Melbourne: Oxford University Press, 2015.
- Peabody JW, Bickel SR, Lawson JS. The Australian health care system. are the incentives down under right side up? *JAMA* 1996;276:1944–50.
- Keleher H. The Medical Profession in Australia. In: Mcintyre T, ed. *Understanding the Australian health care system*. 3rd ed. NSW: Elsevier, 2016.
- Sarrazin MSV, Rosenthal GE. Finding pure and simple truths with administrative data. *JAMA* 2012;307:1433–5.
- Youens D, Moorin R, Harrison A, *et al.* Using general practice clinical information system data for research: the case in Australia. *Int J Popul Data Sci* 2020;5:1099.
- Australian Institute of Health and Welfare. Diabetes. Canberra Australian Government; 2020. <https://www.aihw.gov.au/reports/australias-health/diabetes> [Accessed cited 09 Sep 2020].
- Royal Australian College of General Practitioners. General practice management of type 2 diabetes: 2016–18 East Melbourne, Vic; 2016.
- Shrivastav M, Gibson W, Shrivastav R, *et al.* Type 2 diabetes management in primary care: the role of retrospective, professional continuous glucose monitoring. *Diabetes Spectr* 2018;31:279–87.
- Lee CMY, Mnataganian G, Woodward M, *et al.* Sex disparities in the management of coronary heart disease in general practices in Australia. *Heart* 2019;105:1898–904.
- Mnataganian G, Lee CMY, Robinson S, *et al.* Socioeconomic disparities in the management of coronary heart disease in 438 general practices in Australia. *Eur J Prev Cardiol* 2020:400–7.
- Benchimol EI, Smeeth L, Guttman A, *et al.* The reporting of studies conducted using observational Routinely-collected health data (RECORD) statement. *PLoS Med* 2015;12:e1001885.
- Busingye D, Gianacas C, Pollack A, *et al.* Data resource profile: MedicinesInsight, an Australian National primary health care database. *Int J Epidemiol* 2019;48:1741–1741h.
- NPS MedicineWise. *MedicinesInsight data book version 2.1*. Sydney: NPS MedicineWise, 2018.
- NPS MedicineWise. MedicinesInsight, 2021. Available: <https://www.nps.org.au/medicine-insight>
- NPS MedicineWise. Using MedicinesInsight data for research, 2018. Available: <https://www.nps.org.au/medicine-insight/using-medicinesinsight-data>
- Yakaryılmaz FD, Öztürk ZA. Treatment of type 2 diabetes mellitus in the elderly. *World J Diabetes* 2017;8:278–85.
- Department of Health. *Medicare benefits schedule book*. Canberra: Australian Government, 2019.
- Rodriguez HP, Marshall RE, Rogers WH, *et al.* Primary care physician visit continuity: a comparison of patient-reported and administratively derived measures. *J Gen Intern Med* 2008;23:1499–502.
- Sherwani SI, Khan HA, Ekhzaimy A, *et al.* Significance of HbA1c test in diagnosis and prognosis of diabetic patients. *Biomark Insights* 2016;11:95–104.
- McCoy RG, Van Houten HK, Ross JS, *et al.* HbA1c overtesting and overtreatment among US adults with controlled type 2 diabetes, 2001–13: observational population based study. *BMJ* 2015;351:h6138.
- Australian Bureau of Statistics. The Australian statistical geography standard (ASGS) remoteness structure, 2020. Available: <https://www.abs.gov.au/websitedbs/d3310114.nsf/home/remoteness+structure>
- Pratt NL, Kerr M, Barratt JD, *et al.* The validity of the Rx-Risk comorbidity index using medicines mapped to the anatomical therapeutic chemical (ATC) classification system. *BMJ Open* 2018;8:e021122.
- Australian Bureau of Statistics. Socio-Economic indexes for areas, 2018. Available: <https://www.abs.gov.au/websitedbs/censushome.nsf/home/seifa>
- Cowling TE, Harris M, Majeed A. Extended opening hours and patient experience of general practice in England: multilevel regression analysis of a national patient survey. *BMJ Qual Saf* 2017;26:360–71.
- Howard M, Brazil K, Akhtar-Danesh N, *et al.* Self-Reported teamwork in family health team practices in Ontario: organizational and cultural predictors of team climate. *Can Fam Physician* 2011;57:e185–91.
- StataCorp. Stata. College Station, Texas StataCorp; 2015.
- Diabetes Australia. Blood glucose monitoring, 2020. Available: <https://www.diabetesaustralia.com.au/living-with-diabetes/managing-your-diabetes/blood-glucose-monitoring/>
- Diabetes australia. bladder & Kidneys, 2020. Available: <https://www.diabetesaustralia.com.au/living-with-diabetes/preventing-complications/bladder-kidneys/>
- Batis C, Mendez MA, Sotres-Alvarez D, *et al.* Dietary pattern trajectories during 15 years of follow-up and HbA1c, insulin resistance and diabetes prevalence among Chinese adults. *J Epidemiol Community Health* 2014;68:773–9.
- Kriska A, El Ghormli L, Copeland KC, *et al.* Impact of lifestyle behavior change on glycemic control in youth with type 2 diabetes. *Pediatr Diabetes* 2018;19:36–44.
- Farmer AJ, Rodgers LR, Lonergan M, *et al.* Adherence to oral glucose-lowering therapies and associations with 1-year HbA1c: a retrospective cohort analysis in a large primary care database. *Diabetes Care* 2016;39:258–63.
- Leong A, Wheeler E. Genetics of HbA1c: a case study in clinical translation. *Curr Opin Genet Dev* 2018;50:79–85.
- NPS Medicineswise. General practice insights report July 2016–June 2017: a working paper. Sydney NPS Medicineswise; 2018.
- Turner D, Tarrant C, Windridge K, *et al.* Do patients value continuity of care in general practice? An investigation using stated preference discrete choice experiments. *J Health Serv Res Policy* 2007;12:132–7.
- Hudson BF, Best S, Stone P, *et al.* Impact of informational and relational continuity for people with palliative care needs: a mixed methods rapid review. *BMJ Open* 2019;9:e027323.
- Oliver D, Deal K, Howard M, *et al.* Patient trade-offs between continuity and access in primary care interprofessional teaching clinics in Canada: a cross-sectional survey using discrete choice experiment. *BMJ Open* 2019;9:e023578.
- Lustman A, Comaneshter D, Vinker S. Interpersonal continuity of care and type two diabetes. *Prim Care Diabetes* 2016;10:165–70.
- Younge R, Jani B, Rosenthal D, *et al.* Does continuity of care have an effect on diabetes quality measures in a teaching practice in an urban underserved community? *J Health Care Poor Underserved* 2012;23:1558–65.
- Hueston WJ. Does having a personal physician improve quality of care in diabetes? *J Am Board Fam Med* 2010;23:82–7.