

## **Short Communication**

# **Designing and Introducing a New Artificial Feeding Apparatus for Sand Fly Rearing**

**Mahboubeh Fatemi<sup>1</sup>, Zahra Saeidi<sup>1</sup>, Parviz Noruzian<sup>2</sup>, \*Amir Ahmad Akhavan<sup>1</sup>**

<sup>1</sup>Department of Medical Entomology and Vector Control, School of Public Health, Tehran University of Medical Sciences, Tehran, Iran

<sup>2</sup>Tajhiz Gostar Omid Iranian Company, Tehran, Iran

(Received 26 June 2018; accepted 13 July 2018)

---

### **Abstract**

**Background:** Due to strict ethical rules, the risk of accidental disease transmission and the most importantly, inconvenience regarding using of live animals, artificial feeding apparatus has been developed for colonization of haematophagous insects. Rearing of sandfly is more difficult than other haematophagous insects.

**Methods:** In the current study, a new apparatus for membrane feeding of *Phlebotomus papatasi* was designed, made and compared with available apparatus in Sand Fly Insectary, Tehran University of Medical Sciences, Tehran, Iran, in 2014.

**Results:** In comparison to other apparatus designed for artificial feeding of other arthropods, our designed apparatus had the highest performance which after up to 1h, the majority of sand flies landed and took blood and among tested membranes, chicken skin was proved the most efficient membrane.

**Conclusion:** Sand fly artificial feeding apparatus can be used at least for rearing of *Ph. papatasi*.

**Keywords:** *Phlebotomus papatasi*, Artificial feeding apparatus, Blood-feeding insects, Sand fly

---

## **Introduction**

Insect colonization has been intensified by increasing of interest in understanding of their life cycle, physiology, anatomy, genetics, and study on arthropod-borne diseases, insecticide and repellency tests to control the diseases (1). Blood-feeding is one of the most critical and difficult steps in rearing process of haematophagous insects. Animal maintenance for blood feeding of the colony, not only is costly and time-consuming but also requires ethical considerations. Due to these restrictions, risk of accidental disease transmission and inconvenience of using live animals, artificial feeding apparatus has been developed. Artificial feeding is a useful technique in nutritional and behavioral studies on insects such as feeding stimulants and interaction between parasite and invertebrate host (2). Moreover, one of the most advantages of this technique in the parasite and vector interaction studies is capability of adding

a certain concentration of parasite to feeding mixture (3). Precise control over the test conditions is considered as another advantage of this method compared to feeding on live hosts. Based on advantages mentioned above, membrane feeding is preferred to feeding on animals.

The earliest attempt at feeding tsetse flies through rat skin was made by Rodhain et al. (4). Subsequently, this technique has been used successfully to feed various haematophagous insects including vectors and their transmissible pathogens to study developmental stages and transmission cycle of micro-organism inside their body (5-15). Establishment and maintenance of sandflies are far more difficult than other haematophagous insects (16-17).

The aim of the current study was to design and introduce a new apparatus for artificial feeding of *Phlebotomus papatasi* in the insectary condition.

---

\*Corresponding author: Dr Amir Ahmad Akhavan,  
E-mail: aaakhavan@tums.ac.ir

## Materials and Methods

In order to membrane feeding of *Ph. papatasi* four artificial feeding apparatus including: Tick artificial feeding apparatus, Mosquito artificial feeding apparatus based on the idea of Cosgrove et al. (18), modified Cosgrove et al. apparatus and a new artificial feeding apparatus which was designed and made in this study in Sand Fly Insectary, Tehran University of Medical Sciences, Tehran, Iran, in 2014, (The patent number: 86836, Islamic Republic of Iran) were compared.

Tick artificial feeding apparatus has a chamber to hold the blood, 5.5cm in diameter and 12.5cm deep. The minimum required volume of blood is 5ml. It was connected to a water bath that circulates warm water inside the apparatus. A glass tube was oriented vertically in the chamber that is 4.5×7cm. Membranes were stretched over one end of the glass tube which is in contact with blood mixture. Fine mesh gauze is fitted on another end of the apparatus to transfer sand flies through it (Fig. 1).

The second apparatus consisted of an 8×7 cm aluminum chamber with a volume of 2.8 ml heated by electrical elements. A thermostat has been connected to adjust the desired temperature (Fig. 2).

Chamber in modified Cosgrove et al. apparatus has a volume of 9ml and the temperature is displayed on a digital screen that is adjustable with buttons (Fig. 3).

The idea of the design of sand flies artificial feeding apparatus was inspired by the two previously available equipment (19, 20). The apparatus contains a stainless steel container in a volume of 6L and a steel plate embedded on the top of the container. The steel plate is used as a container for a water bath if needed. To assure a constant temperature in the blood feeders, a pair of water outlet and inlet pipes was designed for each blood feeder of the apparatus.

In order to offer blood supply for the insects, 7.5×2.5cm glass blood-feeders were designed (Fig. 4). A cavity at the top was designed to hold the blood mixture (up to 2ml) and a pair

of water outlet and inlet pipes for circulating warm water inside the blood-feeder. In each experiment, up to four blood-feeders can be connected to apparatus at the same or different angles, simultaneously. All the pipes were considered 120cm in length in order to make the same condition.

A temperature sensor was placed inside the outlet, and a built-in display installed to monitor experiment process. The temperature and time were adjustable with buttons on the screen. The Alarm sound could be heard after finishing the time given to apparatus (Fig. 5). To mimic natural condition of blood feeding, the membrane temperature was adjusted to 35±1 °C.

The bottom of feeding containers (5.5cm height, 4cm diameter) was moistened with distilled water before the introduction of the sand flies and placed in close contact with the membrane by the clamp. Therefore, the membrane is accessible to the sand flies for blood-feeding.

In four mentioned artificial feeding apparatus, Parafilm, Nescofilm and skin of three-week-old chicken as membrane were tested and compared. Membranes were stretched over the blood mixtures in one end of each feeder and fastened with elastic band.

In each case, a new membrane and fresh blood were used and *Ph. papatasi* were starved for 2h before the blood meal. Moreover, three sources of defibrinated or heparinized blood of human, BALB/c mice and *Rhombomys opimus* were used to achieve the highest blood feeding. All experiments were carried out under the same condition at 26±2 °C temperature and 80 % relative humidity.

Animal protocol was approved by the Ethics Committee of Tehran University of Medical Sciences, Tehran, Iran.

## Results

In tick and Cosgrove's artificial feeding apparatus, no sand fly landed to blood chamber.

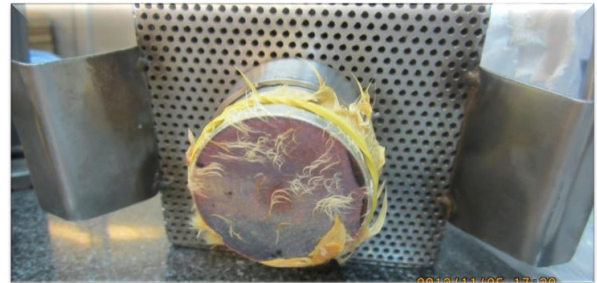
In modified Cosgrove's artificial feeding apparatus, the sand flies landed on the membranes but no *Ph. papatasi* took blood. In three above-mentioned apparatuses, because of presence of only one blood feeder, each blood sample was tested separately. In sand fly artificial feeding apparatus made in the current study, after up to 1h the majority of sand flies landed

and took blood. Moreover, three blood sources were checked simultaneously.

Among the tested membranes, the chicken skin was the best and the heparinized blood had the most efficient because it was not clotted even after 4h. No preference among the tested blood was observed.



**Fig. 1.** Tick artificial feeding apparatus



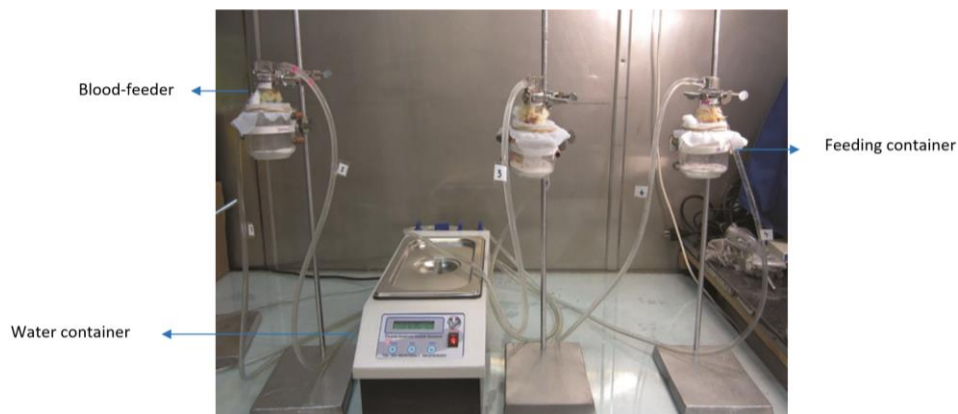
**Fig. 3.** Modified Cosgrove's apparatus



**Fig. 2.** Mosquito artificial feeding apparatus of based on the idea of Cosgrove et al.



**Fig. 4.** Glass blood feeder



**Fig. 5.** *Phlebotomus papatasi* artificial feeding apparatus

## Discussion

Feeding through membrane has been utilized for various hematophagous arthropods to purpose of mass rearing of insects or to artificially infect vectors with parasites (3, 5, 18, 20-22). There were disadvantages in the available artificial feeding equipment such as the temperature which could only be measured in the water tank with no temperature sensor in the vicinity of membrane, and also the time that was not adjustable. The current new designed feeding apparatus does not have the above-mentioned weakness points. Perhaps the lack of circulation of warm water and the moisture, that is critical for sand fly feeding, were responsible for unattractiveness of blood chamber for *Ph. papatasi* in modified and Cosgrove's artificial feeding apparatus.

Each blood-sucking arthropod has a preference host to take blood, determining the most appropriate blood lead to the highest blood feeding that has direct effect on egg production. Because of capability of supporting several blood feeder by this apparatus various blood sources can be tested simultaneously to achieve the best result. Results of artificial-feeding of *Ph. papatasi* showed no significant differences in blood-feeding proportion of sand flies between human, BALB/c mice, and *Rh. opimus*. In agreement with our results, there was no preference between human blood and blood from different types of host (cow, dog, guineapig, hamster, horse, pig, rabbit) in *Ph. papatasi* blood feeding (23).

Angle of blood- feeder can affect on percent of *Lutzomyia shannoni* blood feeding (20). Therefore, ability to change the angle on this device has been provided.

Besides, different kinds of membrane including natural or synthetic such as guinea pig mesentery and large bowel, batwing, human peritoneum, human kidney capsule, Ox liver capsule, Baudruche, chick skin, Parafilm, Chitosan, dialyzing bag and so on have been tested to stimulate insects to taking a blood-meal through membrane (8, 19, 24-26). However, different

studies, same to our study, have shown that chicken skin is more effective than other membranes (25, 27, 22, 28).

## Conclusion

New designed artificial feeding apparatus could be used for rearing of *Ph. papatasi* instead of live animals.

## Acknowledgements

This study was supported financially by Research deputy of Tehran University of Medical Sciences (TUMS) and the Center for Research and Training in Skin Diseases and Leprosy, Tehran, Iran, (project no. 93-03-27-26140). We are grateful to staff of Leishmaniasis Unit, Department of Medical Entomology and Vector Control, School of Public Health, TUMS, for their kind assistance.

The authors declare that there is no conflict of interests.

## References

1. Endris RG, Perkins PV, Young DG, Johnson RN (1982) Techniques for laboratory rearing of sand flies (Diptera: Psychodidae). Mosq News. 42: 400–407.
2. Allen JR, West AS (1962) Collection of oral secretion from mosquitoes. Mosq News. 22: 157–159.
3. Adler S, Theodor O (1927) The behaviour of cultures of *Leishmania tropica*, *L. infantum* and *L. braziliensis* in the sandfly *Phlebotomus papatasi*. Nature. 119: 48–49.
4. Rodhain J, Pons C, Vandenbranden J, Bequaert J (1912) Contribution au mecanisme de la transmission des trypanosomes par les glussinen. Arch Schiffus Trop Hyg. 16: 732–739.

5. Galun R (1967) Feeding stimuli and artificial feeding. Bull World Health Organ. 36: 590–593.
6. Langley PA, Maly H (1969) Membrane feeding technique for tsetse flies (*Glossina* spp.). Nature. 221: 855–856.
7. Lauer DM, Sonenshine DE (1978) Adaptions of membrane feeding techniques for feeding the squirrel flea, *Orchopeas howardi*, and the squirrel louse, *Neohaematopinus sciuropteri*, with notes on the feeding of the human body louse, *Pediculus humanus* var. corporis. J Med Entomol. 14: 595–596.
8. Owens L (1981) A method for membrane feeding blood to Culicoides. Aust Vet J. 57: 396–397.
9. Tesh RB, Modi GB (1984) A simple method for experimental infection of phlebotomine sand flies with *Leishmania*. Am J Trop Med Hyg. 33: 41–46.
10. Bernardo MJ, Cupp EW (1986) Rearing black flies (Diptera: Simuliidae) in the laboratory: mass-scale in vitro membrane feeding and its application to collection of saliva and parasitological and repellent studies. J Med Entomol. 23: 666–679.
11. Hagen HE, Grunewald J (1990) Routine blood-feeding of *Aedes aegypti* via a new membrane. J Am Mosq Control Assoc. 6: 535–536.
12. Burg JG, Knapp FW, Silapanuntakul S (1993) Feeding *Haematobia irritans* (Diptera: Muscidae) adults through a nylon-reinforced silicone membrane. J Med Entomol. 30: 462–466.
13. Blackwell A, Mellor PS, Mordue W (1994) Laboratory feeding of *Culicoides impunctatus* (Diptera: Ceratopogonidae) through natural and artificial membranes. J Med Entomol. 31: 302–305.
14. Samish M, Kozłowska A, Maramorosch K (1995) Factors affecting membrane feeding of *Anopheles stephensi*. J Am Mosq Control Assoc. 11: 408–415.
15. Ghosh KN, Mukhopadhyay J (1998) The effect of anti-sand fly saliva antibodies on *Phlebotomus argentipes* and *Leishmania donovani*. Int J Parasitol. 28: 275–281.
16. Killick-Kendrick R (1978) Recent advances and outstanding problems in the biology of phlebotomine sandflies. A review. Acta Trop. 35: 297–313.
17. Killick-Kendrick M, Killick-Kendrick R (1991) The initial establishment of sand fly colonies. Parasitologia. 33: 315–320.
18. Cosgrove JB, Wood RJ, Petric D, Evans DT, Abbott RH (1994) A convenient mosquito membrane feeding system. J Am Mosq Control Assoc. 10: 434–436.
19. Ward RD, Lainson R, Shaw JJ (1978) Some method for membrane feeding of laboratory reared, neotropical sandflies (Diptera: Psychodidae). Ann Trop Med Parasitol. 72(3): 269–276.
20. Mann RS, Kaufman PE (2010) Colonization of *Lutzomyia shannoni* (Diptera: Psychodidae) utilizing an artificial blood feeding technique. J Vector Ecol. 35(2): 286–294.
21. Adler S, Ber M (1941) The transmission of *Leishmania tropica* by the bite of *Phlebotomus papatasi*. Indian J Med Res. 29: 803–809.
22. Ghosh KN (1994) A modified artificial membrane feeding method for the study of the transmission dynamics of leishmaniasis. Trans Roy Soc Trop Med Hyg. 88 (4): 488–489.
23. Harre JG, Dorsey KM, Armstrong KL, Burge JR, Kinnmon KE (2001) Comparative fecundity and survival rates of *Phlebotomus papatasi* sand flies membrane fed on blood from eight mammal species. Med Vet Entomol. 15: 189–196.
24. Hertig M, McConnell E (1963) Experimental infection of Panamanian *Phlebotomus* sandflies with *Leishmania*. Exp Parasitol. 14: 92–106.
25. Behin R (1967) Artificial feeding apparatus for mosquitoes. Mosq News. 27(1): 7–90.
26. Tabart J, Colin M, Carayon J, Tene N, Payre

- B, Vetillard A (2013) Artificial feeding of *Varroa destructor* through a chitosan membrane: a tool for studying the host-microparasite relationship. *Exp Appl Acarol.* 61: 107–118.
27. Gerberg EJ, Kutz FW (1971) A large-scale artificial feeding technique for infecting mosquitoes and its application to screening antimalarial chemicals. *J Med Entomol.* 8(5): 610–612.
28. Probst RJ, Welde BT, Lawyer PG, Stiteler JS, Rowton ED (2001) Rhesus monkey model for *Leishmania major* transmitted by *Phlebotomus papatasi* sandfly bites. *Med Vet Entomol.* 15: 12–21.