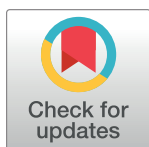


## CORRECTION

# Correction: Effect of anti-epileptic drugs on the survival of patients with glioblastoma multiforme: A retrospective, single-center study

Jae Yeoul Ryu, Kyoung Lok Min, Min Jung Chang

The images for Figs 1 and 2 are incorrectly switched. The image that appears as Fig 1 should be Fig 2, and the image that appears as Fig 2 should be Fig 1. The figure captions appear in the correct order.



## OPEN ACCESS

**Citation:** Ryu JY, Min KL, Chang MJ (2020) Correction: Effect of anti-epileptic drugs on the survival of patients with glioblastoma multiforme: A retrospective, single-center study. PLoS ONE 15 (2): e0228800. <https://doi.org/10.1371/journal.pone.0228800>

**Published:** February 5, 2020

**Copyright:** © 2020 Ryu et al. This is an open access article distributed under the terms of the [Creative Commons Attribution License](https://creativecommons.org/licenses/by/4.0/), which permits unrestricted use, distribution, and reproduction in any medium, provided the original author and source are credited.

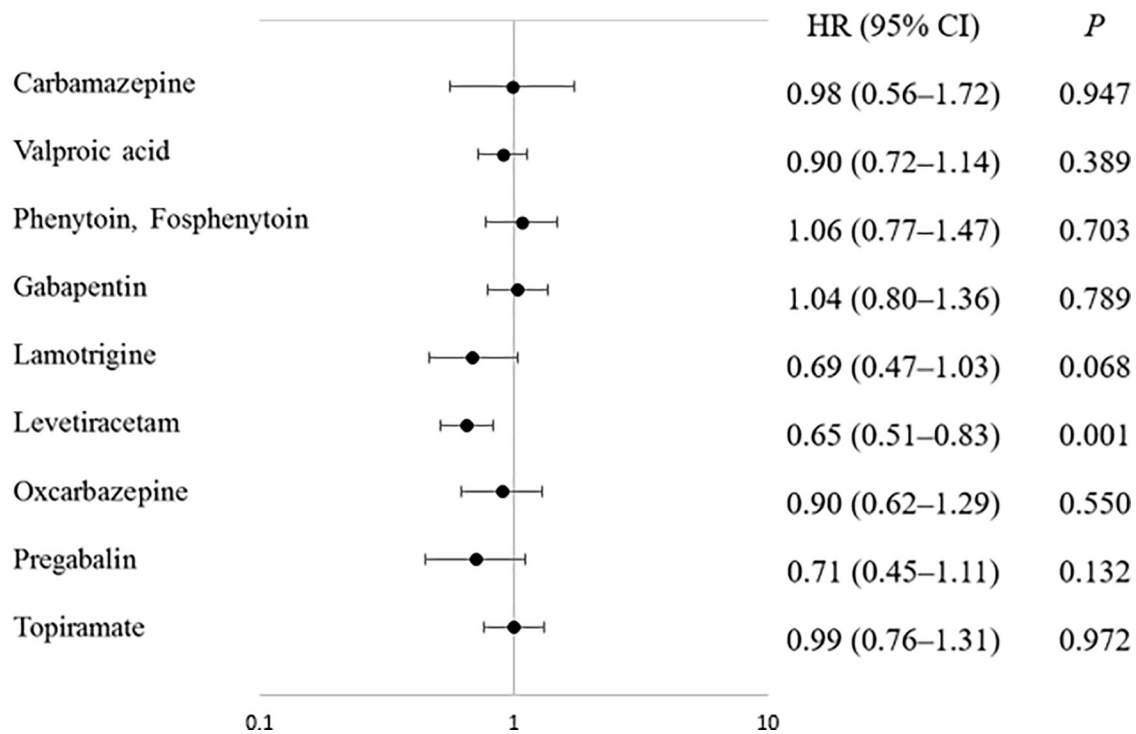
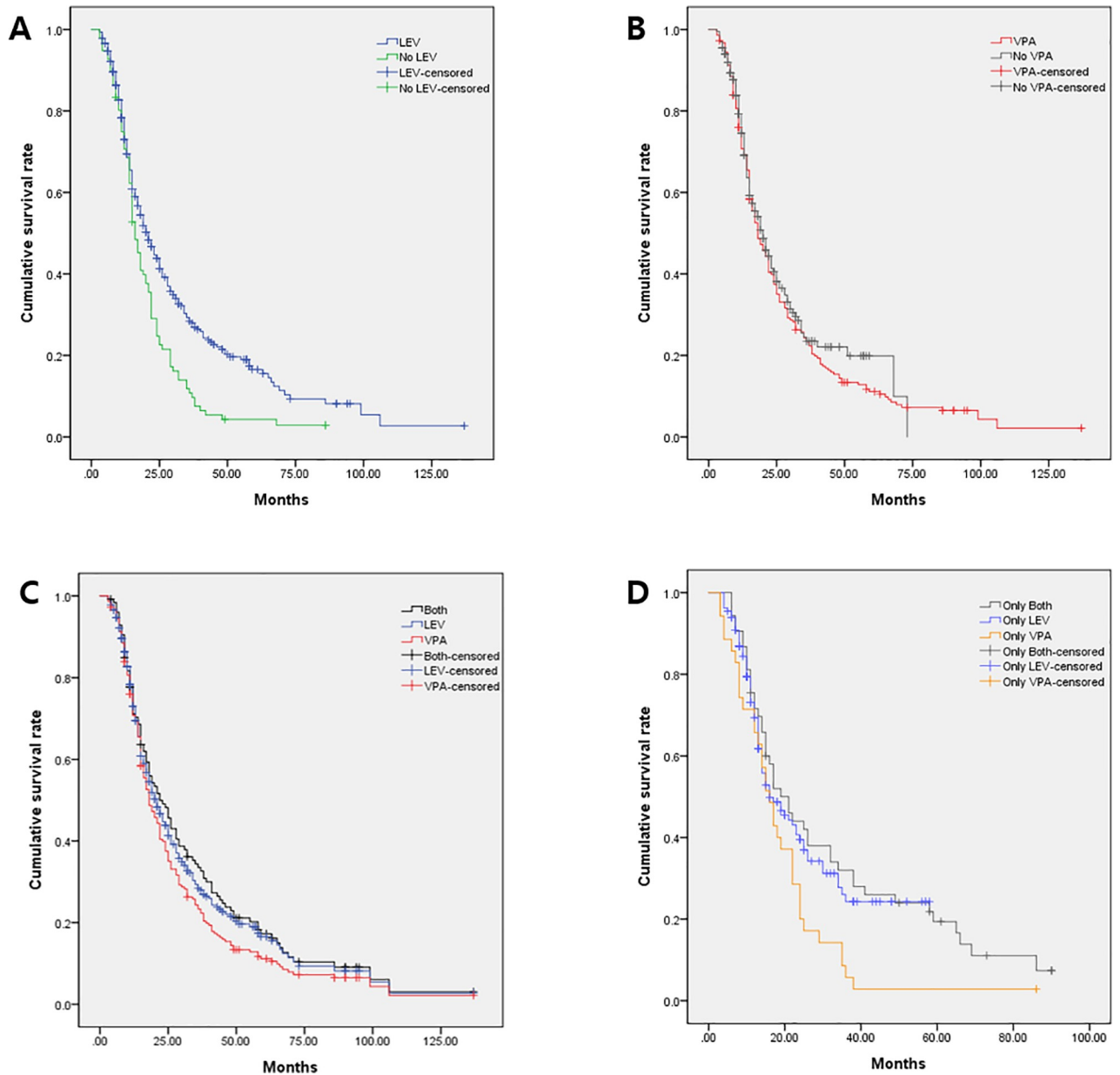


Fig 1. The Cox proportional hazard regression forest plot showing the risk of each antiepileptic drug in patients with glioblastoma. HR, hazard ratio; CI, confidence interval.

<https://doi.org/10.1371/journal.pone.0228800.g001>



**Fig 2. The Kaplan-Meier survival plot showing the overall survival (OS) duration.** (a) The LEV-treated group (LEV; blue line) versus no LEV treatment (No LEV; green line). (b) The VPA-treated group (VPA; red line) versus no VPA treatment (No VPA; gray line). (c) The group treated with both LEV and VPA (both; black line) versus the LEV-treated group (blue line) or the VPA-treated group (red line). (d) Treatment with only LEV and VPA (only both; silver line) versus only LEV treatment (only LEV; azure line) or only VPA treatment (only VPA; orange line).

<https://doi.org/10.1371/journal.pone.0228800.g002>

## Reference

1. Ryu JY, Min KL, Chang MJ (2019) Effect of anti-epileptic drugs on the survival of patients with glioblastoma multiforme: A retrospective, single-center study. *PLoS ONE* 14(12): e0225599. <https://doi.org/10.1371/journal.pone.0225599> PMID: 31790459