

Investigation of CCR7 Marker Expression Using Immunohistochemical Method and Its Association with Clinicopathologic Properties in Patients with Breast Cancer

Laleh Vahedi¹, Maryam Ghasemi¹, Jamshid Yazdani², Samaneh Ranjbar¹, Banafshe Nouri³, Ahad Alizadeh⁴, Parvaneh Afshar⁵

¹Department of Pathology, School of Medicine, Mazandaran University of Medical Sciences, Sari, Iran

²Department of Biological Statistics and Epidemiology, School of public Health, Mazandaran University of Medical Sciences, Sari, Iran

³School of Medicine, Mazandaran University of Medical Sciences, Mazandaran, Iran

⁴Department of Epidemiology and Reproductive Health, Reproductive Epidemiology Research Center, Royan Institute for Reproductive, Biomedicine, ACECR, Tehran, Iran

⁵Research and Development Unit of Referral Laboratory, Deputy of Health Management, Mazandaran University of Medical Sciences, Sari, Iran

Corresponding Author: Laleh Vahedi, Department of Pathology, School of Medicine, Mazandaran University of Medical Sciences, Sari, Iran
Tel: +98911156624
Email: Lalevahedi@gmail.com

Received: 26, Mar, 2017

Accepted: 10, Sep, 2017

ABSTRACT

Background: Breast cancer is one of the most common cancers among women in the world, especially in Iran. There are large numbers of molecular and genomic factors causing breast cancer as well as many markers associated with tumor invasion.

Chemokines are small proteins that primarily regulate leukocyte trafficking in the homeostatic conditions and specific immune responses. Chemokine receptor 7 (CCR7) belongs a class A subtype 7-span transmembrane G-protein coupled receptor. CCR7 plays a role in the migration of tumor cells such as immune cells into lymphoid organs through binding to its only two ligands CCL19/CCL21.

High expression of this marker has been observed in breast cancer. However, there have been limited and contradictory data in studies conducted on the relationship between the increasing expression of this marker with various clinical and pathological factors.

Materials and Methods: This case-control practical study was carried out on total mastectomy samples from 70 patients with breast cancer and tumor-adjacent normal tissue using immunohistochemistry technique to assess the expression of CCR7 marker. The relationship among the marker expression with different clinical and pathological tumor factors such as age, tumor size, microscopic grade, neurovascular invasion, lymph node metastasis and tumor stage were evaluated in all patients. Since the both groups were matched for age, so McNemar test, Chi-square test and Fisher's exact test were used to compare the expression of CCR7 marker in the case and control groups. Conditional logistic regression was employed to compare the effects of other variables regarding the age harmonization.

Results: CCR7 expression was observed in 63 (91.4%) out of 70 studied patients and in tumor-adjacent normal tissue of 55 patients (78.6%), while the marker expression intensity in normal tissue was lower than tumoral tissue ($P < 0.032$).

There was a significant relationship among the expression of CCR7 marker with disease stage ($P < 0.001$), grade ($P < 0.035$), lymph node metastasis ($P < 0.003$), perineural invasion ($P < 0.037$) and vascular invasion ($P < 0.01$), but no significant relationship was found among CCR7 expression with other tumor clinicopathologic parameters such as age ($P > 0.19$) and tumor size ($P > 0.105$).

Conclusion: Increased expression of CCR7 has a significant relationship with disease stage, grade, lymph node metastasis and neurovascular invasion of breast cancer but has no relationship with age of patients and tumor size. Therefore, this biomarker can be utilized as a predictive factor for tumor metastasis and survival of patients.

Keywords: Breast Cancer, CCR7, Clinicopathologic, Immunohistochemical staining

INTRODUCTION

Chemokines are one of the prognostic factors in human breast cancer which play multiple roles in various cancer types, especially as a part of the inflammatory mediator networks. They act as angiogenesis factors and are important in the release of immune and tumor cells. The chemokines belong to a large family of small cytokines-like proteins that induce cytoskeletal rearrangement, adhesion to endothelial cells and targeted migration through interaction with G-protein coupled receptors¹⁰.

CCR7 is a homeostatic chemokine receptor that is expressed in various subtypes of immune cells and is involved in their migration to the lymphoid organs. The CCR7 expression can be observed in naive immune cells, lymphocytes T and B, mature dendritic cells, natural killer (NK) cells and thymocyte subsets¹¹.

Recently, chemokines and chemokine receptors have been identified as key factors in metastatic process^{11,12}. The chemokine receptor CCR7 is a 7-span transmembrane G-protein coupled receptor that can cause migration of cells to the secondary lymphoid organs by binding to their ligands (chemokines CCL19 and CCL21). CCL19 and CCL21 are expressed by stromal cells of primary and secondary lymphoid organs, endothelial cells of lymphatic vessels and peripheral tissues^{13,14}.

A sequence called DRY motif at the cytoplasmic end of transmembrane domain 3 (TM3) plays major role in controlling the CCR7 receptor activity and in coupling to G-protein. The presence of a polar reaction between arginine in DRY motif and glutamate in TM6 stabilizes inactive status of the receptor, referring to ionic lock¹⁵.

The CCR7 expression has been reported in tumoral cells of different organs such as melanoma, breast, lung, prostate, head and neck, stomach and colorectal cancers as well as hematologic malignancies such as non-Hodgkin's lymphomas, which are involved in migration of tumoral cells to lymphoid organs such as immune cells¹⁶.

The process of metastatic cancer is highly dependent on interaction between tumor and stromal cells. CCL21 could help to regulate tumor cell migration and invasion through CCR7¹⁷. It

appears that CCR7-CCL21 axis in breast cancer is vital in lymph node metastasis^{18,19}.

Some studies conducted on the field of breast cancer have indicated that there is a significant relationship between the CCR7 expression and clinicopathologic properties in human breast cancer such as tumor size, histological grade and lymph node metastasis^{10,13,20,21}. However, other studies have shown that there is no significant relationship between the CCR7 expression and clinicopathologic properties in human breast cancer such as tumor size, patient's age, tumor-involved lymph nodes and tumor grade²². Also, in another study, the association was not positive in the tumor cells¹¹. The present study aimed to determine the CCR7 marker expression and its association with clinicopathologic characteristics using immunohistochemistry method in patients with breast cancer referred to Imam Khomeini Hospital, Sari, Iran between 2011 and 2016.

Given the rising prevalence of breast cancer in different countries including Iran and the direct correlation of its prognosis with lymph node metastasis, lack of proper medical response, high mortality rate among females due to breast cancer and contrary results in this regard, it seems that conducting this study could help to resolve the existing conflicts and use of appropriate treatment in the future.

MATERIALS AND METHODS

Study type and participants

In the present case-control and practical study, the CCR7 expression was investigated in the invasive tumor tissue of patients with breast cancer in the case group and in the tumor-adjacent normal tissue in the same slide of patients in the control group. This study was conducted to investigate the relationship between the CCR7 marker expression and clinicopathologic characteristics in the invasive tumor on the breast cancer tissue samples available in the archive of Pathology Department of Imam Khomeini Hospital, Sari, Iran between 2011 and 2016.

The patients were divided into two groups of under 50 years and over 50 years. The tumor sizes were

defined in three groups of 2 cm, 2-5 cm and above 5 cm.

Inclusion criteria

Study participants included patients diagnosed with invasive ductal carcinoma following the breast surgery and those who did not receive chemotherapy before surgery.

Exclusion criteria

The tumors with unsuitable blocks or slides for immunohistochemical or giemsa staining and also patients with incomplete clinicopathologic information were excluded from the study. Each study group consisted of 70 patients.

Data collection

At first, the samples not exposed to chemotherapy and radiotherapy were collected from the archive of Imam Khomeini Hospital, and then the questionnaire was completed.

Then, required paraffin blocks were taken out from the archives and the slides stained with hematoxylin-eosin were prepared from the invasive tumoral and normal tissues (including apparently tumor-adjacent normal tissue) as controls.

Microscopic parameters such as lymphatic invasion, vascular invasion, the level of tumor differentiation and the presence of tumor were investigated.

In immunohistochemistry method, at first 4-micron sections of the selected block were placed on slides of Saylyn S3003 and in 60°C for 1 hour, and then were exposed to xylol, absolute ethanol and ethanol 96° (twice in each solution and for 5 min in each time) in three steps for deparaffinization and at last were washed by the running water. After drying, the slides were transferred to 1% hydrogen peroxide mixture (to eliminate internal peroxidase) and methanol followed by target solution after 10 min. Next, they were placed in an autoclave under pressure of 105 MmHg/h20 for 13 min to reach the boiling point. Afterwards, the microwave power was decreased up to 40%, then the tissues were removed after 15 min and left to reach room temperature. After rinsing with running water and wash buffer, the margins of tissues were determined using Dako stylus and they were placed in a moist chamber in the dark. The samples were

covered with Anti-CCR7-antibody marker (1:1000 dilution) and placed in the refrigerator for 18 hours. The positive control was splenic tissue and negative control was PBS (peripheral blood smear). The control tissue was the tumor-adjacent normal tissue. In order to examine the specificity of immune staining, both positive and negative controls were run at the same time in each experiment. In the next stage, the samples were left in an envision environment for an hour at room temperature, and then washed twice with wash buffer. The DAB solution was poured on slides; if a brown color change appeared after 1-2 min, they would place again in wash buffer for 2 minutes. Afterward, the slides washed by distilled water were stained with Mayer's hematoxylin, rinsed in distilled water again and fixed in xylol. Finally, the slides were mounted with Entellan. The prepared slides were examined and reported by two experienced pathologists in the field of CCR7 marker. The expression pattern of CCR7 marker was in cytoplasmic type and brown cytoplasm was considered as positive. All slides were studied in terms of the extent and intensity of staining and the percentage of stained cells and the results were reported as a semi-quantitative ². The staining index of CCR7 marker was calculated via multiplication (staining index), which is determined by multiplying the score for intensity of cell staining by the score for proportion of stained cells. The intensity of cell staining was reported as follows:

Negative = 0

Weak brown positive = 1

Moderate brown positive = 2

Strong brown positive = 3

The percentage of stained cells was also reported as follows: None staining 1: 1-25%, 2: 25-50%, 3: 50-75% and 4: >75%.

Staining index ≥ 6 was considered as an expression at high intensity and < 6 as an expression at low intensity (10). This marker was prepared from the ABCAM Co. in the U.S.A.

Statistical analysis

Initially, descriptive statistics such as mean \pm standard deviation for age, frequency tables, ratios and percentages were applied for other variables to

describe the obtained data. Given that both case and control groups were matched by age, McNemar, chi-square and fishers exact tests were used to compare the CCR7 expression. According to matched age, conditional logistic regression was used for assessment of variables. Data were analyzed by STATA12 software and P-value<0.05 was considered as statistically significance level.

RESULTS

Totally, 70 patients with breast cancer were enrolled and evaluated in the present study. The clinicopathologic findings of patients are briefly given in Table 1.

Table 1: Clinicopathologic findings of patients with breast cancer

Percentage	Number		
44.3	31	<50years	Age
55.7	39	>50years	
22.9	16	>2cm	Tumor size
57.1	40	2-5cm	
20	14	>5cm	Histologic grade
22.9	16	1	
62.9	44	2	
14.3	10	3	Perineural invasion
44.3	31	Yes	
55.7	39	No	Vascular invasion
47.1	33	Yes	
52.9	37	No	Lymph node metastasis
60	42	Yes	
40	28	No	Disease stage
14.3	10	1	
38.6	27	2	
47.1	33	3	

After immunohistochemistry staining, the CCR7 marker expression and intensity of staining were compared in the two groups (Table 2). In the study group, 64 patients (91.4%) had positive staining and 6 patients (8.6%) had negative staining, but, in the control group, 55 patients (78.6%) had positive staining and 15 patients (21.4%) had negative staining. There was no statistically significant correlation in the CCR7 expression between the two groups ($p>0.064$), but the intensity of CCR7 expression in the study group was significantly more than control group ($P<0.032$). In other words, the

intensity of marker expression in invasive tumor tissue was more than in tumor-adjacent normal tissue. The expression level and intensity of CCR7 in the two groups have been presented in Figures 1 and 2. Since the control group was chosen out of tumor-adjacent normal tissues and both groups were matched for age, so Chi-square test was used to analyze this section and compare the CCR7 marker expression in the two groups. The intensity of staining is given in Figures 1 to 5.

Table 2: Comparison of staining intensity of CCR7 marker in the two case and control groups

	Severity of Expression			
	Frequency		Percent	
	Control	Case	Control	Case
Negative	15	6	21.4	8.6
Weak	31	13	44.3	18.6
Moderate	23	28	32.9	40
Strong	1	23	1.4	32.9
Total	70	70	100	100

Table 3: Comparison of staining index (SI) of CCR7 marker in the two case and control groups

	Staining index>6	Staining index≤ 6
Case group	48%	52%
Control group	89%	11%

Investigation of marker expression in the three grades demonstrates that the severity of marker expression is significantly elevated by increasing the grades of disease. A more detailed assessment indicates that grades one and two are significantly different in terms of marker expression, but there is no statistically significant difference between grades two and three (Table 4).

Table 4: Investigation of relationship between CCR7 expression and grade in patients with breast cancer

		Percentiles							
		Grade	Percentiles						
			5	10	25	50	75	90	95
Weighted Average (Definition 1)	Marker	I	0	0	1	1.5	2	2.3	0
	Expressi on	II	0	1	2	3	3	4	4
		III	2	2	2.75	3	4	4	4

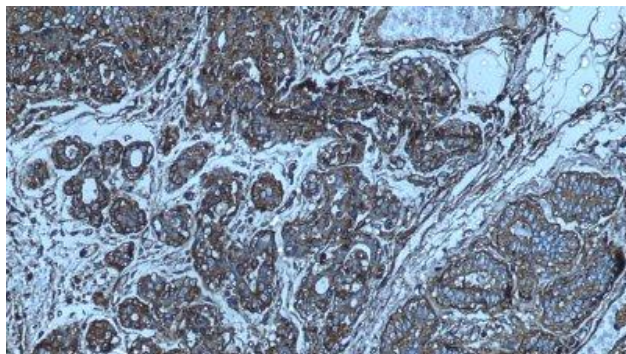
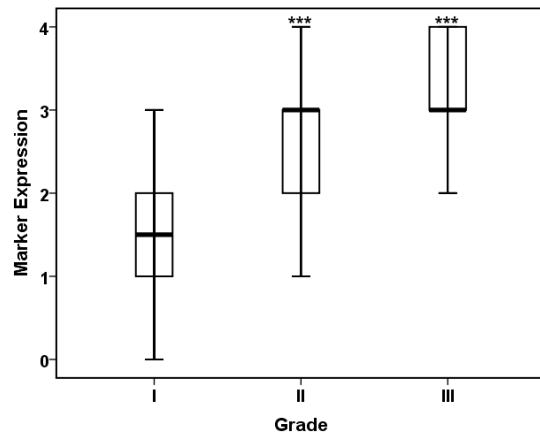


Fig 1: Positive staining of CCR7 marker in cytoplasm of breast cancer cells and moderate staining of this marker in normal breast tissue cells (100X)

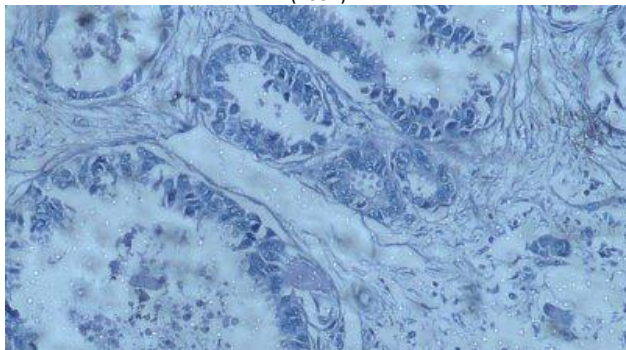


Fig 2: Negative staining of CCR7 marker in cytoplasm of breast cancer cells by immunohistochemical staining (100X)

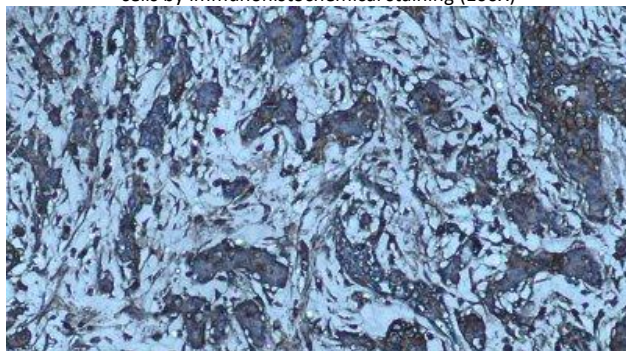


Fig 3: +1 (Weak) staining of CCR7 marker in cytoplasm of tumor cells in breast carcinoma by immunohistochemical staining (100X)

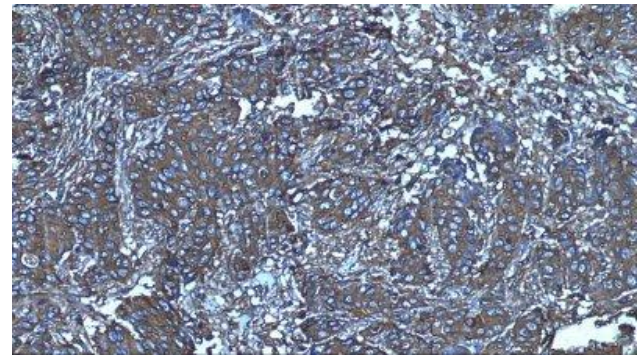


Fig 4: +2 (moderate) staining of CCR7 marker in cytoplasm of tumor cells in breast carcinoma by immunohistochemical staining (100X)

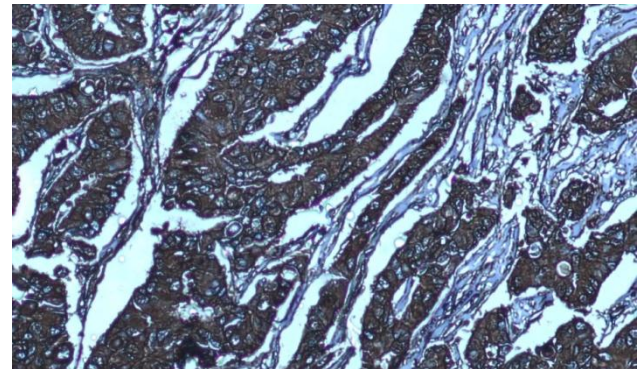


Fig 5: +3 (Strong) staining of CCR7 marker in cytoplasm of tumor cells (100X)

Following results were obtained by comparing the CCR7 marker expression with clinicopathologic parameters of patients with breast cancer and statistical analysis of the data by McNemar and Fisher's exact tests.

There was no direct and significant relationship between tumor size and marker expression (Figure 3).

The correlation between the grade and the stage of disease and the marker expression indicates a strong direct correlation between these two variables (Figures 4 and 5).

The marker expression in patients with vascular involvement, positive perineural and lymph node metastasis was significantly more than in patients with negative index (Table 5).

Investigating the correlation between age and marker expression demonstrates that aging has no significant effect on the expression of studied markers (Table 5).

The relationship between clinicopathologic parameters of patients and the CCR7 marker is listed in Table 5.

Table 5: Relationship between CCR7 expression and clinicopathologic characteristics of breast cancer

Clinicopathologic parameters		CCR7 expression				P value
		Positive		Negative		
		Number	Percentage	Number	Percentage	
Age	<50	37	52	4	5.5	0.19
	≥50	27	40	2	2.6	
Tumor size	>2cm	13	18.57	3	4	0.105
	2-5cm	37	52.85	3	4	
	>5cm	14	20.6	0	0	
	1	13	18.57	3	4	
Histological grade	2	41	58.97	3	4	0.035
	3	10	14.0	0	0	
	Yes	31	44.3	33	47.2	
Perineural invasion	NO	0	0	6	8.5	0.0375
	Yes	33	47.2	31	44.3	
Vascular invasion	NO	0	0	6	8.5	0.018
	Yes	42	60	22	31.5	
Lymph node metastasis	NO	0	0	6	8.5	0.003
	1	6	8.57	4	5.7	
Disease stage	2	25	35.37	2	2.8	0.001
	3	33	47.2	0	0	

DISCUSSION

Lymphatic vascular endothelial cells of peripheral tissues and stromal cells of lymph tissues produce two types of chemokine ligands, CCL19 and CCL21, which couple to the CCR7 protein receptor. It is believed that this receptor is produced by dendritic cells, B-lymphocytes, T memory cells and naive cells¹.

The CCR7 biomarker in many animal studies, in vitro condition and in human researches is presented as prognostic factor. The expression of this biomarker can predict the existence and amount of metastasis in breast cancer².

Increased expression of CCR7 receptor has been reported in lung cancer³, non-small cell, esophageal cancer⁴ and stomach cancer³.

Upregulation level of CCR7 marker has been reported in head and neck tumoral squamous cell^{5,6}, metastatic tumor cells and regional lymph nodes. The association between CCR7 markers and lymph node metastasis in the patients with thyroid and colorectal cancer was also found⁷⁻⁹.

In the study by Liu et al. on 200 samples of invasive ductal breast cancer, the CCR7 marker expression was reported 82%.¹⁰ Fei li et al. examined 60 patients with primary breast cancer and found CCR7 marker expression (60%) with high intensity¹³. In

the study of Philippe ACassier et al., CCR7 marker was not positive in tumor cells of breast cancer but was positive in 43% of spindle-shaped stromal cells¹¹. In the present study, the CCR7 expression level was 91% among the patients. The difference in the measured levels can be due to different methods of staining or assessing the CCR7 expression.

Fei li et al.¹³ and Liu et al.¹⁰ demonstrated no significant correlation between patients' age and CCR7 marker expression. Similar results were obtained in the present study and no significant relationship was found.

Liu et al.¹⁰ reported a significant correlation among the incidence of CCR7 marker, lymph node metastasis and disease stage. Fei li et al.¹³ also showed that there is a significant relationship among the CCR7 expression, lymph node metastasis and clinicopathologic stage. N cabioglu et al.²¹ in a study on 197 breast cancer patients with stage T1 proved that cytoplasmic expression of CCR7 with high intensity in tumors with lymph node metastasis is higher than in tumors without lymph node metastasis (p=0.013). The results of our study showed that the incidence of CCR7 marker has had a significant role in breast cancer as a prognostic biomarker in metastatic lymph nodes. In other

words, there was a significant correlation among the CCR7 expression, level of lymph node metastasis and disease stage. Liu et al.¹⁰ found that the highest CCR7 marker expression (71%) was in patients with stage II, while the highest expression (47.2%) in the current study was observed in patients with stage III.

Concerning the relationship between the level of marker expression and grade, Liu et al.¹⁰ showed a significant association, so that the majority of the patients were in grade II. However, Andre et al. reported no significant correlation between the grade and level of CCR7 expression²². Our study has shown a significant relationship between them and the majority of our patients were in grade II.

N Cabioglu et al.²¹, Andre et al.²² and Liu et al.¹⁰ found no significant relationship between tumor size and CCR7 expression. In the study by Liu et al.¹⁰, 54% of patients were in the category of 2-5 cm. In our study, there was no significant statistical correlation between these two and 52% of patients had tumor size between 2 and 5 cm.

In the study by Hernandez et al.²⁵, no significant correlation was found between CCR7 expression and vascular involvement, but CCR7 expression in our study was correlated with vascular and perineural invasions.

Some of the key limitations of this study included the short-term follow-up, study of distant metastasis and survival rate of the patients.

CONCLUSION

The results obtained in this study demonstrated the presence of a strong relationship between CCR7 expression and most of the clinicopathologic properties of breast cancer, including lymph node metastasis, tumor grade, disease stage, perineural involvement and vascular invasion, whereas no significant correlation was found between age and tumor size. Therefore, this biomarker can be used as a prognostic marker for predicting metastasis. In order to achieve greater certainty as a result, the investigation of the relationship among the survival of patients, distant metastasis and recurrence rate with CCR7 marker expression is highly recommended as a subject for future studies.

REFERENCE

1. Liu Y, Ji R, Li J, , et al. Correlation effect of EGFR and CXCR4 and CCR7 chemokine receptors in predicting breast cancer metastasis and prognosis. *J Exp Clin Cancer Res.* 2010; 29:16.
2. Cassier PA, Treilleux I, Bachelot T, et al. Prognostic value of the expression of C-Chemokine Receptor 6 and 7 and their ligands in non-metastatic breast cancer. *BMC Cancer.* 2011; 11:213.
3. Razmkhah M, Jaberipour M, Safaei A, et al. Chemokine and chemokine receptors: a comparative study between metastatic and nonmetastatic lymph nodes in breast cancer patients. *Eur. Cytokine Netw.* 2012; 23(3):72-7.
4. Li F, Zou Z, Suo N, et al. CCL21/CCR7 axis activating chemotaxis accompanied with epithelial-mesenchymal transition in human breast carcinoma. *Med Oncol.* 2014; 31(9):180.
5. Shields JD, Fleury ME, Yong C, et al. Autologous chemotaxis as a mechanism of tumor cell homing to lymphatics via interstitial flow and autocrine CCR7 signaling. *Cancer Cell.* 2007;11(6):526-38.
6. Legler DF, Uetz-von Allmen E, Hauser MA. CCR7: roles in cancer cell dissemination, migration and metastasis formation. *Int J Biochem Cell Biol.* 2014; 54:78-82.
7. El-Ghonaimy EA, El-Shinawi M, Ibrahim SA, et al. Positive lymph-node breast cancer patients—activation of NF- κ B in tumor-associated leukocytes stimulates cytokine secretion that promotes metastasis via C-C chemokine receptor CCR7. *FEBS J.* 2015;282(2):271-82.
8. Tutunea-Fatan E, Majumder M, Xin X, et al. The role of CCL21/CCR7 chemokine axis in breast cancer-induced lymphangiogenesis. *Mol Cancer.* 2015;14: 35.
9. Palacios-Arreola MI, Nava-Castro KE, Castro JI, et al. The role of chemokines in breast cancer pathology and its possible use as therapeutic targets. *J Immunol Res.* 2014; 2014: 849720.
10. Müller A, Homey B, Soto H, et al. Involvement of chemokine receptors in breast cancer metastasis. *Nature.* 2001;410(6824):50-6.
11. Dean M. Cancer stem cells: redefining the paradigm of cancer treatment strategies. *MolInterv.* 2006;6(3):140-8.
12. Li F, Zou Z, Suo N, et al. CCL21/CCR7 axis activating chemotaxis accompanied with epithelial-mesenchymal transition in human breast carcinoma. *MedOncol.* 2014;31(9):180.
13. Cabioglu N, Gong Y, Islam R, et al. Expression of growth factor and chemokine receptors: new insights in the biology of inflammatory breast cancer. *Ann Oncol.* 2007;18(6):1021-9.
14. Cabioglu N, Yazici MS, Arun B, et al. CCR7 and CXCR4 as novel biomarkers predicting axillary lymph node

- metastasis in T1 breast cancer. *Clin Cancer Res.* 2005;11(16):5686-93.
15. Andre F, Cabioglu N, Assi H, et al. Expression of chemokine receptors predicts the site of metastatic relapse in patients with axillary node positive primary breast cancer. *Ann Oncol.* 2006;17(6):945-51.
16. Howell A, Sims AH, Ong KR, et al. Mechanisms of disease: prediction and prevention of breast cancer—cellular and molecular interactions. *Nat Clin Pract Oncol.* 2005; 2(12):635-46.
17. Varangot M, Barrios E, Sónora C, et al. Clinical evaluation of a panel of mRNA markers in the detection of disseminated tumor cells in patients with operable breast cancer. *Oncol Rep.* 2005; 14(2):537-45.
18. Gralow JR. Breast cancer 2004: Progress and promise on the clinical front. *Phys Med.* 2006; 21 Suppl 1:2.
19. Berry DA, Parmigiani G, Sanchez J, et al. Probability of carrying a mutation of breast-ovarian cancer gene BRCA1 based on family history. *J Natl Cancer Inst.* 1997; 89(3):227-38.
20. Clarke RB, Anderson E, Howell A. Steroid receptors in human breast cancer. *Trends Endocrinol Metab.* 2004; 15(7):316-23.
21. Gjerstorff MF, Benoit VM, Laenkholm A-V, et al. Identification of genes with altered expression in medullary breast cancer vs. ductal breast cancer and normal breast epithelia. *Int J Oncol.* 2006; 28(6):1327-35.
22. Zabicki K, Colbert JA, Dominguez FJ, et al. Breast cancer diagnosis in women \leq 40 versus 50 to 60 years: increasing size and stage disparity compared with older women over time. *Annals of Surgical Oncology.* 2006;13(8):1072-7.
23. LG LFF. Pathological effects of hyperthermia in normal tissues. *Cancer Res.* 1984; 44(10 Suppl):4826s-4835s.
24. Cabioglu N, Yazici MS, Arun B, et al. CCR7 and CXCR4 as novel biomarkers predicting axillary lymph node metastasis in T1 breast cancer. *Clin Cancer Res.* 2005; 11(16):5686-93.
25. Hernandez L, Magalhaes MA, Coniglio SJ, et al. Opposing roles of CXCR4 and CXCR7 in breast cancer metastasis. *Breast Cancer Research.* 2011;13:R128.