

# A Cytosolic Serine Endopeptidase from *Trypanosoma cruzi* Is Required for the Generation of Ca<sup>2+</sup> Signaling in Mammalian Cells

Barbara A. Burleigh, Elisabet V. Caler, Paul Webster, and Norma W. Andrews

Department of Cell Biology, Yale University School of Medicine, New Haven, Connecticut 06520-8002

**Abstract.** An early event in the *Trypanosoma cruzi* cell invasion process, the recruitment of host lysosomes, led us to investigate the involvement of signal transduction. Infective trypomastigotes were found to contain a soluble Ca<sup>2+</sup>-signaling activity for mammalian cells that is sensitive to protease inhibitors. Inhibitor and substrate utilization profiles were used to purify a candidate peptidase for involvement in this process, from which we isolated a full-length cDNA clone. The sequence revealed a novel enzyme, denominated *T. cruzi* oligopeptidase B, which is homologous to members of the prolyl

oligopeptidase family of serine hydrolases, known to participate in the maturation of biologically active peptides. The *T. cruzi* oligopeptidase B was expressed as a fully active product in *Escherichia coli*, and antibodies to the recombinant enzyme inhibited both peptidase activity and Ca<sup>2+</sup> signaling induced in normal rat kidney cells by trypomastigote extracts. Our data suggest that the *T. cruzi* oligopeptidase B participates in processing events in the cytoplasm of the parasites, generating a factor with Ca<sup>2+</sup>-signaling activity for mammalian cells.

SIGNAL transduction events induced in host cells by intracellular pathogens are emerging as important regulators of the invasion process (Bliska et al., 1993). As opposed to intracellularly targeted toxins, which have been extensively studied, very little is known about pathogen products that trigger signaling pathways through mammalian surface receptors. Experimental evidence suggests that factors capable of modulating the behavior of mammalian cells are produced by certain intracellular bacteria (Galan, 1994; Menard et al., 1996; Yamamoto et al., 1996), but their molecular nature and mechanism of action are largely unknown. In the case of *Shigella*, an isolated complex containing the gene products IpaB and IpaC was shown to induce membrane ruffling and macropinocytosis in epithelial cells, similar to what is observed during bacterial internalization (Menard et al., 1996). Although the mode of action and cellular target of the Ipa complex have not yet been determined, it was proposed that these secreted proteins may bind to a surface receptor (Menard et al., 1996).

Recent findings from several laboratories indicate that the cell invasion mechanism of the protozoan parasite *Trypanosoma cruzi* involves receptor-mediated signal transduction (Ming et al., 1995; Rodriguez et al., 1995; Barr et al., 1996). Entry of *T. cruzi* into nonphagocytic mammalian cells occurs by recruitment and fusion of host lyso-

somes at the parasite attachment site, an unusual process that results in formation of a parasitophorous vacuole with lysosomal properties (Tardieux et al., 1992; Rodriguez et al., 1996). The parasite resides in this lysosome-derived vacuole for a short period after invasion, after which it escapes into the cytoplasm, where replication occurs (Meirelles and de Souza, 1983; Ley et al., 1990). *T. cruzi* invasion of nonphagocytic mammalian cells is restricted to two life cycle stages: metacyclic forms that are transmitted by the insect vector, and trypomastigotes that are released from infected host cells. Epimastigotes are noninfective forms that replicate in the insect vector, and amastigotes are the intracellular stages that replicate inside host cells. Although *T. cruzi* exhibits tropism for specific cell types in the vertebrate host, it is able to infect many different cell types in culture (Brenner, 1973).

Consistent with their infective capabilities, metacyclics (Dorta et al., 1995) and trypomastigotes (Tardieux et al., 1994; Burleigh and Andrews, 1995; Barr et al., 1996) contain a soluble factor that induces transient increases in the cytosolic free calcium concentration ( $[Ca^{2+}]_i$ )<sup>1</sup> of a variety of mammalian cell types (Burleigh and Andrews, 1995). In response to live trypomastigotes or trypomastigote soluble extracts, Ca<sup>2+</sup> is mobilized from intracellular stores in an

Address all correspondence to Norma W. Andrews, Department of Cell Biology, Yale University School of Medicine, 333 Cedar Street, New Haven, CT 06520-8002. Tel.: (203) 785-4314. Fax: (203) 785-7226. E-mail: norma\_andrews@qm.yale.edu

1. *Abbreviations used in this paper:* AFC, 7-amino-4-trifluoromethyl coumarin; AMC, 7-amino-4-methyl coumarin; Z-Phe-Arg-AMC, Z-phenylalanyl-arginyl-7-amino-4-methyl coumarin;  $[Ca^{2+}]_i$ , intracellular free calcium concentration; E-64, N-[N-(1-3-trans-carboxirane-2-carbonyl)-L-leucyl]-agmatine; IL, interleukin; NRK, normal rat kidney; rPEP, recombinant *T. cruzi* oligopeptidase B; RT, reverse transcriptase; TSE, trypomastigote soluble extract.

IP<sub>3</sub>-mediated (Rodriguez et al., 1995), pertussis toxin-sensitive pathway (Tardieux et al., 1994). Prevention of these transients by buffering host cell intracellular free Ca<sup>2+</sup> (Tardieux et al., 1994) or depleting intracellular Ca<sup>2+</sup> stores (Rodriguez et al., 1995) results in inhibition of parasite invasion. Furthermore, rapid rearrangements in the host cell actin cytoskeleton are observed as a consequence of trypomastigote-induced Ca<sup>2+</sup> transients (Rodriguez et al., 1995). Since experimental depolymerization of host cell actin microfilaments results in enhancement of invasion by *T. cruzi* (Schenkman et al., 1991; Tardieux et al., 1992), the available evidence supports the postulated role for Ca<sup>2+</sup> signaling in facilitating cell invasion by these parasites.

Further characterization of the soluble trypomastigote Ca<sup>2+</sup>-signaling activity revealed that the induction of Ca<sup>2+</sup> transients in mammalian cells is coupled to the activity of a parasite peptidase (Burleigh and Andrews, 1995). On the basis of protease inhibitor profile and substrate specificity, a 120-kD peptidase was identified in *T. cruzi* trypomastigotes as a candidate for involvement in mammalian cell signaling (Burleigh and Andrews, 1995). However, the purified peptidase had no Ca<sup>2+</sup>-signaling activity on its own, and it was found to be present at similar levels in epimastigotes, a noninvasive life cycle stage of *T. cruzi*, which does not signal mammalian cells (Burleigh and Andrews, 1995). Removal of a heparin-binding fraction from the trypomastigote soluble extract resulted in a depletion of Ca<sup>2+</sup> signaling but not of peptidase activity, suggesting that, in addition to the peptidase, a factor present only in invasive forms of the parasite is required for signaling (Burleigh and Andrews, 1995). This second component could be a precursor that is processed by the peptidase, resulting in a mature Ca<sup>2+</sup> agonist. Alternatively, it could function as a recognition molecule, perhaps involved in targeting the peptidase to the host cell membrane where its subsequent activity would result in the induction of Ca<sup>2+</sup> transients.

The goal of the present study was to clarify these issues, by characterizing the peptidase at the molecular level and by determining its intracellular location and requirement for Ca<sup>2+</sup> signaling. Cloning and nucleotide sequencing of a full-length cDNA clone revealed that the *T. cruzi* peptidase is a cytosolic enzyme closely related to members of the prolyl oligopeptidase family of serine endopeptidases, some of which were previously shown to function in eukaryote prohormone processing (Fuller et al., 1988; Kreil, 1990). Antibodies to the recombinant peptidase inhibit both peptidase activity and Ca<sup>2+</sup> signaling in mammalian cells by trypomastigote extracts, providing direct evidence for participation of the *T. cruzi* oligopeptidase B in this signaling pathway.

## Materials and Methods

### Cells and Parasites

Normal rat kidney (NRK) fibroblasts were maintained in 10 mM Hepes-buffered DME containing 10% FBS at 37°C in a humidified atmosphere containing 5% CO<sub>2</sub>. Trypomastigotes from the *T. cruzi* Y strain were obtained from supernatants of infected monolayers of LLC-MK<sub>2</sub> cells as previously described (Andrews et al., 1987). Amastigotes were generated in culture by incubating freshly harvested trypomastigotes in liver infusion tryptose medium containing 10% FBS at 37°C, 5% CO<sub>2</sub> for 24 h. Epimastigotes (Y strain and Dm28c) were cultured in liver infusion tryptose me-

dium at 28°C (Nogueira and Cohn, 1976). Metacyclic parasites were purified from stationary phase cultures of epimastigotes (Dm28c) by passing parasites through a DEAE-cellulose column (Yoshida, 1986).

### Preparation of Parasite Soluble Extract

Freshly harvested *T. cruzi* were washed in Hepes-buffered Ringer's solution containing 0.5% BSA (Heuser, 1989), resuspended at 2 × 10<sup>8</sup> parasites per ml in Dulbecco's PBS containing 2 mM CaCl<sub>2</sub> and 1 mM MgCl<sub>2</sub> (PBS<sup>2+</sup>), and then killed by heating at 56°C for 5 min and frozen at -80°C. Freeze-thawed parasites were disrupted by sonication (model 250; Branson Ultrasonics, Danbury, CT) on ice with a microtip for two 15-s bursts at a setting of 2.5. Unbroken cells and nuclei were removed by centrifugation at 750 g for 10 min at 4°C. The postnuclear supernatant was centrifuged at 100,000 g at 4°C for 45 min using a Ti50.1 rotor (Beckman Instruments, Fullerton, CA), and the resulting supernatant fraction was passed over a Con A-Sepharose column (Pharmacia, Uppsala, Sweden). The unbound material was then collected, aliquoted, and stored at -80°C.

### Peptidase Purification and Amino Acid Sequencing

Purification of the 120-kD *T. cruzi* peptidase was carried out as previously described (Burleigh and Andrews, 1995). Briefly, epimastigotes, grown and harvested as described above, were resuspended in PBS<sup>2+</sup> at a concentration of 5 × 10<sup>8</sup>/ml, heated to 56°C for 5 min, and then immediately frozen at -80°C. Thawed parasite suspensions were adjusted to 20 μM *N*-[*N*-(1-3-*trans*-carboxirane-2-carbonyl)-*L*-leucyl]-agmatine (E-64) to inhibit the *T. cruzi* major lysosomal protease, cruzain (Cazzulo et al., 1989), before preparation of the parasite soluble fraction as described above. The flow-through fraction from Con A-Sepharose (50 ml) was applied to a 10-ml column of DEAE-cellulose equilibrated in PBS<sup>2+</sup>. Unbound material containing the 120-kD enzyme was subjected to ammonium sulfate precipitation (30–52% saturation) for 2 h on ice. Precipitated protein was recovered by centrifugation at 15,000 g for 30 min, and pellets were resuspended in PBS<sup>2+</sup> containing 20 μM E-64, filtered through a 0.22-μm filter unit (Millipore Products Division, Bedford, MA) and desalted on an Econo-Pac<sup>®</sup> 10DG column (BioRad Laboratories, Hercules, CA) equilibrated in PBS<sup>2+</sup>. 4 ml of desalted material was applied to a 1.6 cm × 60 cm Sephacryl-300 column (Pharmacia) equilibrated in PBS<sup>2+</sup> and proteins were eluted in the same buffer, collected as 2-ml fractions. Peptidase activity was assayed using the synthetic substrate *Z*-phenylalanyl-arginyl-7-amino-4-methyl coumarin (*Z*-Phe-Arg-AMC) (Enzyme Systems Products, Livermore, CA) as described previously (Burleigh and Andrews, 1995). Peptidase-containing fractions were pooled and concentrated by ammonium sulfate precipitation (70% saturation). The pellet was resuspended in 25 mM Bis-Tris, pH 6.4, desalted, and applied to a Mono-Q HR 5/5 column (Pharmacia). Bound material was eluted with a gradient of 0–250 mM NaCl, 25 mM Bis-Tris, pH 6.4. The 120-kD enzyme eluted at a salt concentration of ~75–90 mM NaCl. These fractions were pooled and applied to a Mono-P HR 5/5 chromatofocusing column (Pharmacia) and bound material eluted with a pH gradient of 6.4–4.0 formed with Polybuffer 74 (Pharmacia). At this point in the purification scheme, it was possible to detect a significant 120-kD band in Coomassie-stained SDS-PAGE gels that hydrolyzed the synthetic substrate *Z*-Phe-Arg-AMC in a gel overlay assay (Burleigh and Andrews, 1995). Thus, the 120-kD band containing purified peptidase (~10 μg) was excised from an SDS-PAGE gel and submitted to the W.M. Keck Biotechnology Resource Laboratory at Yale University for in-gel tryptic digestion and amino acid sequence analysis of HPLC-purified peptides.

### Isolation of a Peptidase cDNA Clone

Total cellular RNA was isolated from *T. cruzi* using a guanidinium-thiocyanate extraction method (Chomczynski and Sacchi, 1987). Degenerate oligonucleotide primers were designed in forward and reverse orientations based on the amino acid sequence of two tryptic fragments of the peptidase: DYMNSYSPVD and DEPVFWA. These primers were used to amplify DNA from first strand cDNA that was synthesized from 10 μg total trypomastigote RNA using AMV reverse transcriptase under conditions suggested by the manufacturer (Boehringer Mannheim Corp., Indianapolis, IN). For PCR amplification of peptidase DNA, 5-μl aliquots of trypomastigote cDNA were used as template, and PCR reactions were carried out using the GeneAmp kit (Perkin-Elmer Corp., Norwalk, CT) with 35 cycles of: 1-min annealing at 40°C, 1-min extension at 72°C, 1-min denaturation at 94°C, and a final 5-min extension step at 72°C, using a PTC-100

automated thermocycler (MJ Research, Inc., Watertown, MA). One combination of forward and reverse primers generated a 750-bp PCR product, which was directly cloned into the TA-cloning vector pCRII<sup>®</sup> (Invitrogen, San Diego, CA) and sequenced from the T7 and SP6 primer sites in the plasmid by the W.M. Keck Biotechnology Resource Laboratory to confirm its authenticity. The 750-bp fragment was labeled by incorporation of [<sup>32</sup>P]dCTP (Amersham Corp., Arlington Heights, IL) during PCR amplification and used as a probe to screen a *T. cruzi* amastigote cDNA library constructed in  $\lambda$  ZAPII (Stratagene, La Jolla, CA; generously provided by S. Teixeira and J. Donelson, University of Iowa, Iowa City). Plaques of positive clones were isolated, and pBluescript plasmids containing cDNAs were excised from the phage according to manufacturer's specifications (Stratagene). A clone with the largest insert (2.6-kb EcoRI-XhoI fragment), which contained the full-length peptidase cDNA, was completely sequenced in both directions by the W.M. Keck Biotechnology Resource Laboratory at Yale University.

### Expression of Recombinant Peptidase in *Escherichia coli*

The peptidase gene was amplified from the full-length cDNA clone in pBluescript using the LA-PCR<sup>™</sup> kit (Takara Biomedicals, Otsu, Shiga, Japan) using forward (5'-GCT ACC GTG **CTC GAG** ATG AAG TGT-3') and reverse (5'-GTG ACA CCC TAA **CTC GAG** CAA TAA-3') primers designed with internal Xho I sites (*bold*); the initiation codon of the forward primer is underlined. The PCR product was cloned directly into pCRII (Invitrogen), and then the 2.2-kb XhoI-XhoI fragment was excised and subcloned into the pET19b expression vector (Novagen, Inc., Madison, WI). Restriction analysis was carried out to ensure correct orientation of the gene, and sequencing from the T7 promoter in the plasmid demonstrated that the ATG was in frame. The peptidase was expressed as an NH<sub>2</sub>-terminal polyhistidine-tagged fusion protein in *E. coli* BL21 by induction of a log phase culture with 1 mM isopropylthio- $\beta$ -D-galactoside for 16 h at 27°C. Bacteria were harvested and the recombinant *T. cruzi* oligopeptidase (rPEP) was purified on nickel-agarose resin according to the manufacturer's specifications (Novagen, Inc.).

### Generation and Affinity Purification of Anti-Peptidase Antibodies

All antibodies to the *T. cruzi* oligopeptidase B were raised by the Pocono Rabbit Farm & Laboratory, Inc. (Canadensis, PA). Antibodies to the denatured 120-kD peptidase were obtained by immunizing a guinea pig with polyacrylamide gel slices containing 5  $\mu$ g of protein for the initial immunization and 2  $\mu$ g for subsequent boosts. Serum was collected biweekly and analyzed for peptidase-specific antibodies on Western blots of trypomastigote soluble fractions. Neutralizing antibodies were raised by immunizing a rabbit with 200  $\mu$ g purified rPEP in complete Freund's adjuvant, followed by monthly boosts of 50  $\mu$ g in incomplete Freund's adjuvant. Silver stain of an overloaded SDS-PAGE gel confirmed the absence of contaminants in the rPEP preparation obtained by nickel affinity chromatography (not shown). IgG from anti-peptidase sera was purified using protein A-Sepharose (Pharmacia) according to a standard procedure (Harlow and Lane, 1988). For affinity purification of antibodies, purified rPEP (750  $\mu$ g) was coupled to 400  $\mu$ l of ECH-Sepharose resin (Pharmacia) by addition of 0.1 M of the cross-linking reagent 1-ethyl-3-(3-dimethylamino-propyl) carbodiimide (EDAC; Sigma Chemical Co., St. Louis, MO). The beads were washed and unreacted groups were blocked with 100 mM ethanolamine for 1 h at 37°C. The rPEP-Sepharose was washed extensively with dH<sub>2</sub>O and equilibrated in 10 mM Tris-HCl, pH 7.5, before incubating overnight at 4°C with anti-peptidase IgG (5 ml of IgG at 1  $\mu$ g/ml). Unbound IgG was removed by washing the rPEP-Sepharose column with 10 ml of 10 mM Tris-Cl, pH 7.5, followed by 10 ml of 500 mM NaCl, 10 mM Tris-Cl, pH 7.5. Anti-peptidase IgG was eluted with 5 ml 100 mM glycine, pH 2.5, and neutralized with 500  $\mu$ l 1 M Tris-HCl, pH 8.0.

### SDS-PAGE and Immunoblotting

Parasite soluble fractions or rPEP were treated with Laemmli sample buffer (Laemmli, 1970) containing 5%  $\beta$ -2-mercaptoethanol at 25° or 100°C for 5 min before separation on 7.5% polyacrylamide gels. Proteins were transferred to Immobilon<sup>™</sup> membranes (Millipore Corp.) according to the method of Towbin et al. (1979). After an overnight incubation at 4°C in blocking buffer (5% nonfat milk, 20 mM Tris, pH 7.4, 15 mM NaCl, 0.05% sodium azide), blots were incubated with 25  $\mu$ g/ml guinea pig anti-

peptidase IgG or 5  $\mu$ g/ml rabbit anti-rPEP IgG in blocking buffer for 2 h at room temperature. Blots were washed five times with 20 mM Tris, pH 7.4, 150 mM NaCl, and 0.1% Tween 20 (TBST) for 5 min each wash, and then incubated with a 1:4,000 dilution of alkaline phosphatase-labeled goat anti-guinea pig IgG or goat anti-rabbit IgG (Kirkegaard & Perry Laboratories, Gaithersburg, MD) for 1 h in blocking buffer. After a 30-min wash with TBST, immunoreactive bands were detected by incubating blots with the alkaline phosphatase substrate 5-bromo-4-chloro-3-indolyl-1-phosphate/nitro blue tetrazolium (BCIP/NBT; Promega Corp., Madison, WI).

### Peptidase Activity Assays

Peptidase activity was carried out either as a soluble assay using 7-amino-4-methyl coumarin (AMC) or 7-amino-4-trifluoromethyl coumarin (AFC)-conjugated peptide substrates (Enzyme Systems Products), or by direct detection of peptide-AMC hydrolysis in SDS-PAGE gels as described previously (Burleigh and Andrews, 1995). For kinetic analysis, rPEP was diluted with 50 mM Tris-Cl, pH 8.0, 150 mM NaCl to a final concentration of  $6 \times 10^{-9}$  M, and substrates were added in the range of 2–15  $\mu$ M. Initial velocity ( $v_0$ ) of substrate hydrolysis was recorded as the release of AMC over 60 s (during which the rate of AMC hydrolysis was linear) in a model F-2000 spectrofluorimeter (Hitachi Instruments Inc., Danbury, CT) at excitation and emission wavelengths of 380 and 440 nm, respectively.  $K_m$  values were calculated from Lineweaver-Burke plots (Segel, 1976). Inhibitor sensitivity was carried out by incubation of rPEP (5 ng) in 500  $\mu$ l with varying concentrations of inhibitors at room temperature for 10 min before adding to 1.5 ml 10  $\mu$ M Z-Phe-Arg-AMC in TBS and measuring hydrolysis of substrate for 5 min in the spectrofluorimeter, as described above.

### Detection of Expressed Products of the Peptidase Gene in *T. cruzi*

First strand cDNA was synthesized from total RNA isolated from different *T. cruzi* life cycle stages as described above for trypomastigotes. 1  $\mu$ l of first strand cDNA synthesis reactions from the three life cycle stages (trypomastigotes, amastigotes, and epimastigotes) was used as template for PCR with a primer pair (forward primer: 5'-ATGAAGTGTGGTC-CCATTGCCACG-3'; reverse primer: 5'-CATTTCACCTCCGAA-GAAGTGTC-3') designed to produce a full-length amplification product. Amplification conditions were as follows: 40 cycles of 1 min at 94°C; 1 min at 50°C; 3 min at 72°C; and a final step of 7 min at 72°C. Southern blot analysis of PCR products separated by electrophoresis on a 1% agarose gel was carried out to determine the specificity of the resulting 2.1-kb bands. Blots were hybridized with the 2.5-kb EcoRI-XhoI fragment excised from the full-length cDNA clone. The EcoRI-XhoI fragment was purified from a 0.7% agarose gel using the Compass<sup>™</sup> DNA purification kit (American Bio-analytical, Natick, MA), and 50 ng was used in a random priming reaction (Boehringer Mannheim Corp.) with 50  $\mu$ Ci [<sup>32</sup>P]dCTP (Amersham Corp.). Hybridization was carried out overnight at 42°C in 50% formamide, 6 $\times$  SSC, 0.5% SDS, and 5 $\times$  Denhardt's solution. The blots were washed to a final stringency of 0.6 $\times$  SSC at 55°C before exposure to X-Omat film (Eastman Kodak Co., Rochester, NY).

### Genomic DNA Isolation and Southern Blots

Genomic DNA was isolated from epimastigotes (Y strain) following published methods (Medina-Acosta and Cross, 1993). To determine the number of genomic copies of the *T. cruzi* peptidase gene, 5  $\mu$ g aliquots of total genomic DNA were digested for 16 h with restriction enzymes, and digested DNA was separated on 0.9% agarose gels in 0.5 $\times$  Tris-borate-EDTA buffer and transferred to Hybond-N membranes by capillary blotting in 20 $\times$  SSC for 16 h. Blots were hybridized with the full-length peptidase cDNA probe.

### Inhibition of Peptidase and Ca<sup>2+</sup>-Signaling Activities with Anti-recombinant Peptidase Antibodies

Inhibition of oligopeptidase B activity in trypomastigote soluble extract (TSE) with IgG from rabbits immunized with the purified recombinant enzyme was carried out in solution by adding 0.75  $\mu$ g/ml to 250  $\mu$ g/ml purified IgG to 50  $\mu$ l TSE in a final volume of 100  $\mu$ l. After a 60-min incubation at 4°C, oligopeptidase B activity was measured by adding 200  $\mu$ l TBS containing 20  $\mu$ M Z-Phe-Arg-AMC and 10  $\mu$ M E-64, and incubated for 10

min at 37°C. The reactions were stopped by adding 1 ml ethanol and AMC release was measured as described above. To test for the effect of anti-rPEP antibodies on the soluble Ca<sup>2+</sup>-signaling activity in these samples, TSE was preincubated with 200 µg/ml preimmune IgG or anti-rPEP IgG for 60 min at 4°C, and then added to NRK fibroblasts preloaded with 5 µM fura-2/AM, 0.01% pluronic F-127 (Molecular Probes Inc., Eugene OR), and 2.5 mM probenecid (Sigma Chemical Co.). Changes in intracellular calcium concentration of NRK cells were continuously measured in a spectrofluorimeter equipped with intracellular cation determination software as described previously (Burleigh and Andrews, 1995). Ca<sup>2+</sup>-signaling activity of trypomastigote soluble extracts was also assayed at the single cell level, by time lapse fluorescence video microscopy. NRK cells were plated 48 h before the assay at  $1.3 \times 10^5$  per dish, on 3.5-cm glass bottom microwells (MatTek Corp., Ashland, MA), and loaded with 5 µM fluo-3/AM (Molecular Probes Inc.) for 45 min at 37°C. After loading, the dishes were washed in Hepes-buffered Ringer's solution (Heuser, 1989) and placed on the heated stage of an Axiovert 135 microscope (Carl Zeiss, Inc., Thornwood, NY). Fluorescence images were collected with a video camera (CCD-C72; Dage/MTI, Michigan City, IN) through a  $\times 40$  objective and recorded on an optical memory disk (TQ-3031F; Panasonic, Secaucus, NJ), at time-lapse intervals of 1 s using a computer-controlled shutter system (Metamorph software; Universal Imaging Corp., Westchester, PA). Parasite soluble extracts (50 µl) preincubated with pre-immune or immune anti-rPEP IgG (200 µg/ml) were added to the cells at 50 s after initiation of the time-lapse recording. Pseudocolored images were transferred to Adobe Photoshop (Adobe Systems, Inc., Mountain View, CA), composed and printed in a high resolution color printer (XLS 8600PS; Eastman Kodak Co.).

### EM Immunolocalization

Trypomastigotes freshly harvested from LLC-MK<sub>2</sub> tissue-culture supernatants ( $1 \times 10^7$  per ml) were fixed with an equal volume of 2 $\times$  fixative (0.2% glutaraldehyde, 8% formaldehyde, 200 mM Hepes, pH 7.4) and centrifuged for 10 min at 3,000 g. The supernatant was removed, and fresh 1 $\times$  fixative was added to the pellet for an additional 2 h. Pellets were infiltrated with 2.1 M sucrose/PBS and frozen in liquid nitrogen. Cryosectioning and labeling of parasites was carried out as described previously (Webster and Grab, 1988) using affinity-purified anti-peptidase IgG at 20 µg/ml and 10 nm protein A-gold. Micrographs were taken using a 410 TEM (Phillips Instrument Co., Marwar, NJ) operating at 80 kV.

## Results

### Isolation of a Full-Length cDNA Clone Encoding the *T. cruzi* Peptidase Implicated in Ca<sup>2+</sup> Signaling

The *T. cruzi* peptidase was purified several hundredfold from epimastigote soluble extracts in several FPLC steps as described previously (Burleigh and Andrews, 1995). The 120-kD band, shown to have peptidase activity in a gel overlay assay (Burleigh and Andrews, 1995), was excised from an SDS-PAGE gel and subjected to trypsin digestion, peptide purification by HPLC, and amino acid sequencing of selected peptides. Degenerate oligonucleotides designed based on amino acid sequences of internal tryptic peptides of the 120-kD peptidase were used in reverse transcriptase (RT)-PCR reactions with total cellular RNA from trypomastigotes as template. The resulting 750-bp PCR product was cloned, sequenced from both ends, and found to contain homologous sequences to known peptidases by searching the available sequence databases. This 750-bp PCR product was used as a probe to screen a *T. cruzi* cDNA library, from which several positive clones were obtained. The clone with the largest insert (2.6 kb) was completely sequenced in both directions (GenBank accession number U69897) and a 2215-bp open reading frame was identified that contained an A-T rich region with a stop codon (TAA) 42 bp upstream of the

ATG designated as the initiation codon (Fig. 1). Several other clones containing smaller inserts (2.1 and 1.4 kb) were partially sequenced and found to be peptidase cDNA clones lacking complete 5' ends (not shown).

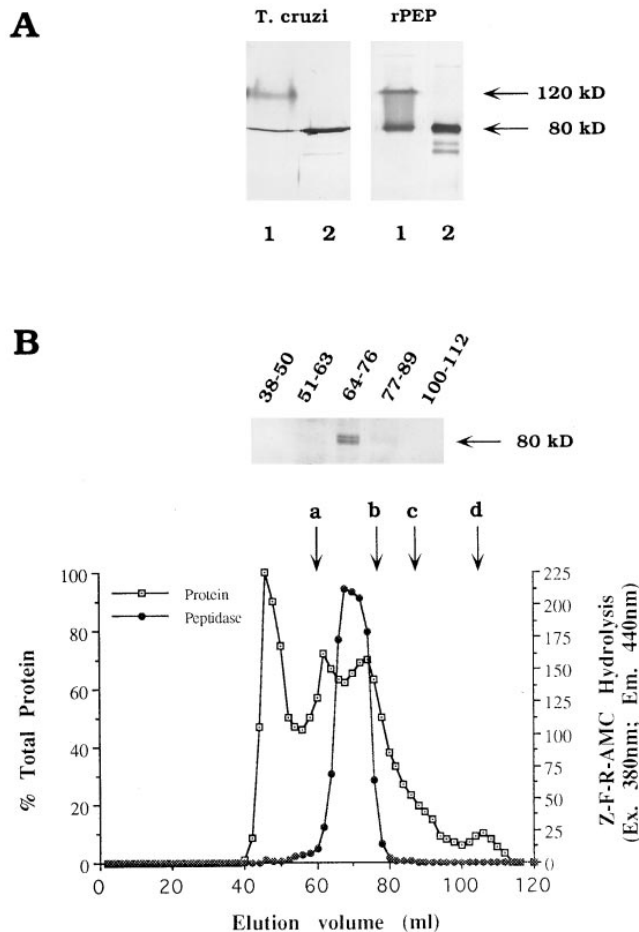
### Recombinant *T. cruzi* Oligopeptidase B Expressed in *E. coli* Has Identical Biochemical Properties to the Native Enzyme

The peptidase cDNA sequence (Fig. 1), which predicts a polypeptide of 714 amino acids with a calculated molecular mass of 81,011 daltons, was cloned into pET-19b and expressed in *E. coli*. Preliminary characterization of the purified polyhistidine-tagged rPEP revealed that the specific activity of the enzyme, using Z-Phe-Arg-AMC as a substrate, was similar to that described for the native peptidase purified from epimastigotes (Burleigh and Andrews, 1995). However, because the *T. cruzi* peptidase was shown to migrate in an SDS-PAGE gel as a band of 120 kD, it was of interest to determine the relationship between the 81-kD polypeptide predicted by the cDNA sequence and the native molecule. To accomplish this, polyclonal antibodies raised to gel-extracted *T. cruzi* 120-kD peptidase were used to probe Western blots of trypomastigote soluble proteins and rPEP separated by SDS-PAGE under nonreducing and reducing conditions. Immunoreactive bands of  $\sim 120$  and 80 kD were detected in both the soluble trypomastigote extract and purified rPEP under nonreducing conditions (Fig. 2 A, lanes 1). However, when samples were fully reduced and boiled, the 120-kD band was no longer detectable and the 80-kD one was the major band (Fig. 2 A, lanes 2). The two lower molecular weight bands observed in reduced boiled samples are likely to be degradation products, since they occur in both the native enzyme and rPEP samples (Fig. 2 A, lanes 2). These results demonstrate that the *T. cruzi* oligopeptidase B, both parasite derived and recombinant, migrates with an apparently higher molecular weight on SDS-PAGE gels when electrophoresis is carried out under conditions known to preserve peptidase activity (Burleigh and Andrews, 1995), but migrates at the expected size of 80 kD when fully denatured.

The *T. cruzi* oligopeptidase B eluted from S-300 gel filtration columns in fractions where proteins of  $\sim 180$  kD would be expected (Fig. 2 B). The only detectable immunoreactivity on a Western blot probed with anti-peptidase antibodies was associated with the pooled peak of peptidase activity in fractions 64–76 (Fig. 2 B). No immunoreactivity was detected in the pool containing fractions 77–89, which would contain monomeric proteins in the 60–100-kD range, suggesting that the peptidase is not present in monomeric form in parasite extracts. A similar profile was observed for elution of the purified recombinant oligopeptidase B from an S-300 column (not shown).

Previous studies of the native *T. cruzi* oligopeptidase B revealed that this enzyme is specific for peptide substrates with basic amino acids residues in the P1 position (Ashall, 1990; Santana et al., 1992; Burleigh and Andrews, 1995). Kinetic analyses using purified rPEP were carried out with three Arg-containing synthetic substrates. The calculated  $K_m$  values for these substrates were similar: Z-Phe-Arg-AMC and Z-Gly-Gly-Arg-AMC had  $K_m$  values of  $6 \pm 2$  µM,





**Figure 2.** Molecular size determination of native and recombinant *T. cruzi* oligopeptidase B. (A) Immunoblots of oligopeptidase B partially purified from epimastigotes (*T. cruzi*, lanes 1 and 2) or 0.6 µg purified recombinant peptidase (*rPEP*, lanes 1 and 2) with guinea pig polyclonal anti-oligopeptidase B IgG (25 µg/ml) followed by acid phosphatase-conjugated anti-guinea pig IgG. Samples were reduced with 5% β-mercaptoethanol and kept at either 25°C (lanes 1) or heated for 5 min at 100°C (lanes 2) before SDS-PAGE. (B) FPLC fractionation of a trypanomastigote soluble extract on Sephacryl-300. Proteins were eluted in PBS<sup>2+</sup> while A<sub>280</sub> nm was continuously monitored (open squares). The peak absorbance value (fraction 41) was taken as 100% and the baseline as 0% protein. Peptidase activity (black circles) was assayed in 20 µl aliquots of each fraction using ZFR-AMC as a substrate, as described in Materials and Methods. Fractions containing peptidase activity (64-76) were pooled, concentrated, reduced, boiled for 5 min, separated by SDS-PAGE, and immunoblotted with anti-oligopeptidase B guinea pig IgG as described above. The elution of molecular mass standards is indicated by letters (a) catalase = 232 kD; (b) aldolase = 158 kD; (c) albumin = 67 kD; (d) ribonuclease A = 13.7 kD.

the vicinity of the active site serine residues (Fig. 3, *asterisk*). The *T. cruzi* peptidase was more similar overall to the *Moraxella* and *E. coli* peptidases, having 34% and 30% identical residues, respectively. Less identity to the *T. cruzi* enzyme was observed with peptidases from *Flavobacterium* (22%), *Aeromonas* (21%), and pig brain (18%). The *T. cruzi* sequence contains conserved Asp and His residues at positions 647 and 682, which have been proposed

to form the catalytic triad with Ser in this family of enzymes (Stone et al., 1991; Yoshimoto et al., 1995). It was on the basis of sequence similarity with the *Moraxella* and *E. coli* protease II enzymes (since renamed oligopeptidase B; Tsuru and Yoshimoto, 1994) that the *T. cruzi* enzyme was named oligopeptidase B.

### Oligopeptidase B Gene is Present as a Single Copy and Expressed in All Life Cycle Stages of *T. cruzi*

Southern blot analysis of *T. cruzi* genomic DNA probed with the full-length oligopeptidase B cDNA revealed a simple pattern after single enzyme digestions. A single band was produced with several different enzymes, and two bands were obtained after digestion with *Sac*I, *Sca*I, or *Pvu*I (Fig. 4 A). These results are consistent with the predicted restriction map of the peptidase cDNA (not shown), suggesting that the peptidase gene is represented as a single copy in the *T. cruzi* Y strain genome.

From previous work it was known that oligopeptidase B is expressed in trypanomastigotes and epimastigotes (Burleigh and Andrews, 1995). To determine whether the peptidase gene was expressed in other life cycle stages of *T. cruzi*, RT-PCR was carried out using total RNA prepared from each stage, and specific oligonucleotide primers predicted to result in the amplification of a full-length PCR product. PCR products were separated on agarose gels, blotted, and probed with a full-length cDNA probe (Fig. 4, B-I) that revealed a single 2.1-kb band present in the three main life cycle stages of *T. cruzi*. For direct detection of oligopeptidase B activity in the life cycle stages of the parasite, soluble extracts were prepared and separated on SDS-PAGE gels, and peptidase activity was detected in a gel overlay assay using Z-Phe-Arg-AMC as the substrate. As shown in Fig. 4, B-II, peptidase activity migrating at an apparent molecular mass of 120 kD was found in all parasite life cycle stages. The 120-kD band was previously shown to be the only peptidase detectable with this substrate in Con A-unbound soluble fractions of *T. cruzi* (Burleigh and Andrews, 1995). Purified recombinant oligopeptidase B was also included in the gel (Fig. 4, B-II, *rPEP*) to demonstrate that the active product of the cloned peptidase gene expressed in *E. coli* also migrates at 120 kD, identical to the enzyme isolated from *T. cruzi* (Fig. 2 A; Burleigh and Andrews, 1995).

### Antibodies to the Recombinant *T. cruzi* Oligopeptidase B Inhibit Peptide Hydrolysis and Ca<sup>2+</sup>-Signaling Activity of Trypanomastigote Soluble Extracts

Polyclonal antibodies raised against gel-purified 120-kD peptidase were unable to inhibit the activity of the enzyme in solution or to precipitate native enzyme in the absence of detergent (data not shown). Therefore, highly purified active *rPEP* was used to immunize rabbits, and IgG prepared from immune sera was tested for peptidase-blocking activity. As shown in Fig. 5 A, anti-*rPEP* IgG proved capable of inhibiting activity of oligopeptidase B in TSE, whereas preimmune rabbit IgG added at the same final concentrations had no effect. The maximum inhibitory effect (90%) achieved with 100 µg/ml anti-*rPEP* IgG (Fig. 5 A) was not increased with higher concentrations of IgG (up to 500 µg/ml) or by extending the preincubation time

Teruzzi P T T V F D L H V I V N G - - T R T I V K V R E V L G N E D A K N Y T C R R Q L F A T A P D R T K I P L S I V H I D V S 467  
 Moraxella P K T I T F F G L L N L Q T G - - E K Q C L Q L V A P V S G I F Y D R S Q F R Q R Q L V I A T A R S G V K I V P M T A V Y L E G 440  
 Ecoli P D T I F F E L L D M D T T G - - E R R V L K Q T E V P V S G I F Y A - A N Y R S E H L V I V A R D G V E V P V S L V Y H R K K 438  
 Flavobacterium P P T I F E K Y N V T T G N S E - - V Y Q K P K V K - - F N P E N Y V S E Q R V F V S S D G T K T P M H T I S Y K K G 462  
 Aeromonas P P T I L Y K F E P N S G A I S - - L Y R A S A A P - - E K P E D Y V S E Q Q I F Y R S K D G T R V P L I I S Y K K G 443  
 Porcine brain P G T I Y H C D L T K E E L E P R V F R E V T V K G - - T G A S D Y I Q V S T V Q Q I F Y R S K D G T R V P L I I S Y K K G 459

Teruzzi L D M S K P H P T L V L Y A F G S Y G A C V E F E F S V K Y P L P L L - D R G V I V Y A H V R G G G E M G R A V V E I 523  
 Moraxella A L D N G D P A P L I L Y L V G V G S Y G S N S D P R F I D D Y R L P L L L - E K I G I V F V I T A Q I V R G G S I M G R I G V Y E I 496  
 Ecoli H F R K G G H N P L L L V I Y G V G S Y G A S I S D A D F S F S R L S L S L - D R G G F V T V A I V H V R G G G E E I G L G D Q V Y E I 494  
 Flavobacterium L K K D G G S N P T I I L Y G V G G F N T S L Q P A F S V S V A N W M - E N G I G G T V A V A P N I R G G G E Y I G K K V H D 518  
 Aeromonas P P T I L Y K F E P N S G A I S - - L Y R A S A A P - - E K P E D Y V S E Q Q I F Y R S K D G T R V P L I I S Y K K G 443  
 Porcine brain T K L D G S H P A F L I L Y G V G G F N T S L T P S A F S V S V A N W M - D L G I G G V L A V A N I R G G G E Y I G K K V H D 499

Teruzzi V G A K Y T K R N T F S D F T A C A E Y L T E I G L T I T P S Q L A C E E G R S A G G L L I G A V L I N M R P D L F R I 580  
 Moraxella D G - K M Q N K R N T F T D F I A A A K H L I D Q N V R A P T K M L A A R M G G S A G G L L V G A V A N M A G E L F K 552  
 Ecoli D G - K F L K K K I N I F N I D V L D A C D A L L K L G H V S S P S L C Y A M M G G S A G G L L M G V A I N Q R P D L A K 550  
 Flavobacterium A G T R - M K K Q N V F N I D F T A A G E Y L K A E G Y V T R T D R L A I R G G S A G G L L V G A V M T Q R P D L M R 574  
 Aeromonas A G T R - M N K K N V F D D F T A A A E Y L K A E G Y V T R T D R L A I R G G S A G G L L V G A V M T Q R P D L M R 555  
 Porcine brain G G I L - A N K Q N C F D D F D C A A E Y L T K E G Y V T S P K R L T I N G G L L V A T C A N Q R P D L T I G 572

Teruzzi V A L A G V P F V D V M T T N C D P S I P L T T G E V E E V G N P N E Y K F E D Y M N S Y S P V D N V R A Q D - - 636  
 Moraxella V I T V A P V P F V D V V T T N L D T S I P L T T I E V D E V G D P P R K Q C E D Y Y F R Y M K S Y S P Y D N V E I A K D - - 606  
 Ecoli G V I A Q V P F V D V V T T N L D T S I P L T T I G E F D E V G N P Q D Q C E D Y Y F R Y M K S Y S P Y D N V E I A Q A - - 606  
 Flavobacterium V A T P S V G V L D M L R Y N K F T A G A G W A Y D Y G T A E D S K E I - - M F E V L K S Y S P V I R N V K - - A 625  
 Aeromonas V A C Q A V G V L D M L R Y H T T F A G A G W A Y D Y G T S A D S E A - - M F E V L K G Y S P L H S I V R I - - A 606  
 Porcine brain C V I A Q V G V M D M L K F H K Y T T I G H A W T T D Y G C S - - D S K Q - - F E V L I K Y S P L H R N V K L P E A D 626

Teruzzi - - - Y P H L M I Q A G L H D P R V A Y V E P A K V A S K L R A L - - - K T D N S E V I L K M D L E S G H F 683  
 Moraxella - - - Y P H M Y I T T G L I D P R V G Y F E P A K V A R L R A V - - - K T D N N T L V M K T N M D A G H F 655  
 Ecoli - - - Y P H L L V T T G L H D S R V V V P A H S F K F G S E L Q - - - A K G S C K N P I L I R I E T N A G H G 676  
 Flavobacterium G T C Y P S T L V T T A D H D D R V V P A H S F K F A T L Q - - - A D D A G A G P P Q L I R I E T N A G H G 676  
 Aeromonas G V S Y P S T L V T T A D H D D R V V P A H S F K F A T L Q - - - A D D A G A G P P Q L I R I E T N A G H G 657  
 Porcine brain D I Q Y P S M L L T A D H D D R V V P L H S L K F A T L Q Y I V G R S R K G N N P L L I H V D T K A G H G 681

Figure 3. The *T. cruzi* oligopeptidase B is homologous to members of the prolyl oligopeptidase family of serine hydrolases. Residues 412–683 of the *T. cruzi* oligopeptidase B (top) are aligned with *Moraxella lacunata* (residues 385–655; Yoshimoto et al., 1995) and *Escherichia coli* protease II (residues 384–653; Kanatani et al., 1991), and prolyl oligopeptidases from *Flavobacterium meningosepticum* (residues 409–676; Yoshimoto et al., 1991), *Aeromonas hydrophila* (residues 390–657; Kanatani et

al., 1993), and porcine brain (residues 403–681; Rennex et al., 1991). Identical residues are boxed, and the active site serine residue included in the consensus sequence GxSxGGzz is denoted by an asterisk (\*).

(not shown). On a Western blot of total soluble trypomastigote proteins separated by SDS-PAGE under reducing conditions, anti-rPEP IgG specifically recognized the 80-kD peptidase (Fig. 5 B, *arPEP*). Additional bands of lower intensity appearing on this blot are also recognized by the same concentration of IgG prepared from preimmune rabbit sera (Fig. 5 B, *Pre*), with the exception of a band of

~40 kD that is most likely an oligopeptidase B degradation product.

To test whether the inhibition of oligopeptidase B activity by anti-rPEP would affect the  $Ca^{2+}$ -signaling activity of trypomastigote extracts (Tardieux et al., 1994; Burleigh and Andrews, 1995), TSE was pretreated with either preimmune or immune IgG at a final concentration of 200  $\mu$ g/ml,

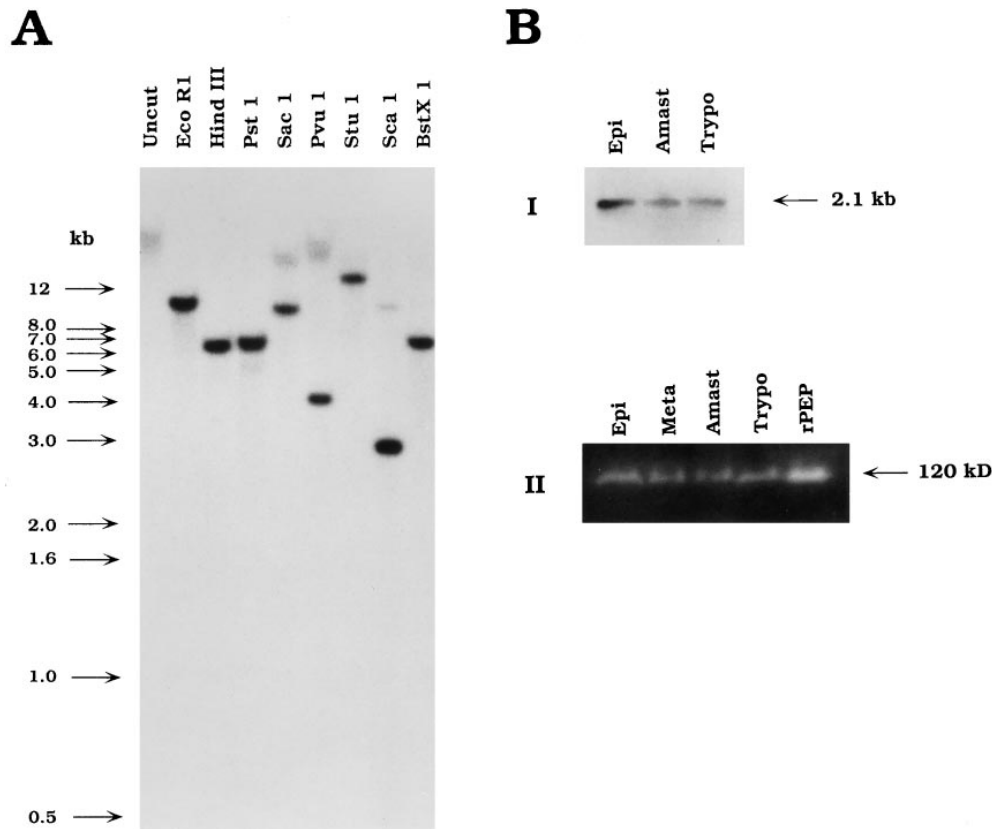
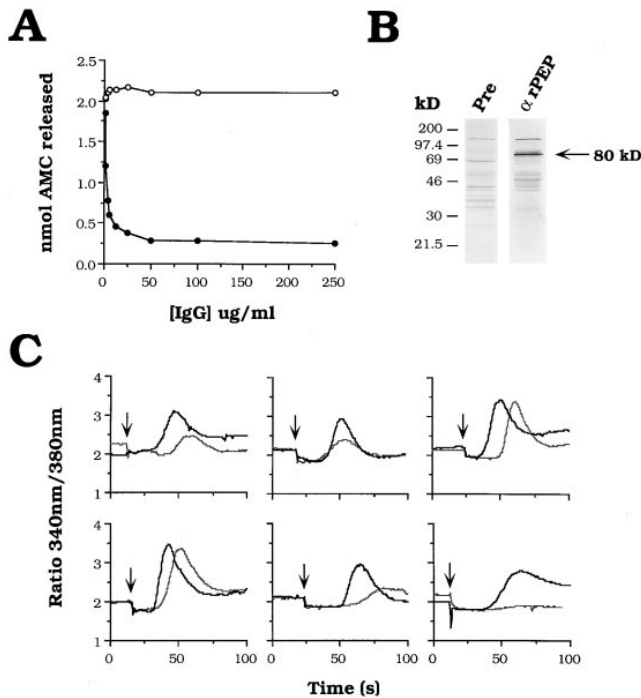


Figure 4. The *T. cruzi* oligopeptidase B gene is present as a single copy in the genome and expressed in all life cycle stages of the parasite. (A) Southern blot of *T. cruzi* genomic DNA digests probed with the full-length oligopeptidase B cDNA labeled with [ $^{32}$ P]dCTP. The blot was washed to a final stringency of  $0.6\times$  SSC at  $60^{\circ}$ C and exposed to film for 5 d. (B) Expression of the oligopeptidase B gene in life cycle stages of *T. cruzi*. (I) Amplification of homologous sequences from total parasite RNA by RT-PCR. PCR products were separated on agarose, blotted to nylon, and probed with the full-length peptidase cDNA, revealing a single band of 2.1 kb in three life cycle stages of *T. cruzi*. (II) Detection of peptidase activity in parasite soluble extracts separated by SDS-PAGE. Total soluble extract was prepared from each parasite life cycle stage, and  $3\times 10^7$  parasite equivalents were loaded in each lane. Oligopeptidase B activity was detected directly in a gel overlay assay as described in the Materials and Methods. Active purified recombinant peptidase (0.6  $\mu$ g; *rPEP*) migrated with an apparent molecular mass of 120 kD, similar to oligopeptidase B activity expressed in each developmental stage of *T. cruzi*: epimastigotes (*Epi*), metacyclics (*Meta*), amastigotes (*Amast*), and trypomastigotes (*Trypo*).

Oligopeptidase B activity was detected directly in a gel overlay assay as described in the Materials and Methods. Active purified recombinant peptidase (0.6  $\mu$ g; *rPEP*) migrated with an apparent molecular mass of 120 kD, similar to oligopeptidase B activity expressed in each developmental stage of *T. cruzi*: epimastigotes (*Epi*), metacyclics (*Meta*), amastigotes (*Amast*), and trypomastigotes (*Trypo*).





**Figure 5.** Antibodies to the recombinant peptidase inhibit peptidase activity and  $\text{Ca}^{2+}$  signaling in mammalian cells by trypomastigote extracts. (A) Oligopeptidase B activity in TSE pretreated with increasing concentrations of preimmune rabbit IgG (open circles) or immune rabbit IgG against rPEP (black circles). Purified IgG ranging from 0.75–500  $\mu\text{g}/\text{ml}$  was added to TSE followed by a 1-h incubation at  $4^\circ\text{C}$ . Hydrolysis of the Z-Phe-Arg-AMC oligopeptidase B substrate was measured at  $37^\circ\text{C}$  for 10 min, as described in Materials and Methods. The values for nmol AMC released are plotted as a function of IgG concentration ( $[\text{IgG}] \mu\text{g}/\text{ml}$ ). (B) Total trypomastigote soluble extract ( $6 \times 10^6$  parasite equivalents) was heated to  $100^\circ\text{C}$  in Laemmli sample buffer in the presence of 5%  $\beta$ 2-mercaptoethanol before separation on a 10% SDS-PAGE gel and immunoblotting with 5  $\mu\text{g}/\text{ml}$   $\alpha$ rPEP ( $\alpha$ rPEP) or 5  $\mu\text{g}/\text{ml}$  IgG prepared from the preimmune rabbit serum (Pre) as described in the Materials and Methods. The arrow indicates the 80-kD oligopeptidase B. (C) Effect of anti-rPEP on the  $\text{Ca}^{2+}$ -signaling activity of TSE on NRK fibroblasts. TSE was preincubated with 200  $\mu\text{g}/\text{ml}$  preimmune IgG (black line) or anti-rPEP IgG (grey line) for 1 h at  $4^\circ\text{C}$ . The ability of TSE to induce  $[\text{Ca}^{2+}]_i$  transients in NRK cells loaded with the  $\text{Ca}^{2+}$ -sensitive dye fura-2/AM was measured in a spectrofluorometric assay, as described in Materials and Methods. Results are plotted as the ratio of the fluorescence emission of fura-2/AM at 510 nm after alternating excitation at 340 nm/380 nm against time (s). TSE was added to the cells at the points indicated by the arrow. The results of six independent experiments are shown.

and then added to fura-2/AM-loaded NRK fibroblasts. Preincubation of TSE with anti-rPEP antibodies resulted in a significant delay in the induction of cytosolic free  $\text{Ca}^{2+}$  transients, when compared with treatment with preimmune IgG (Fig. 5 C). In addition, the level of the response was significantly reduced in four out of six experiments (Fig. 5 C).

To directly visualize the kinetics and intensity of the  $\text{Ca}^{2+}$  transients triggered in NRK cells by trypomastigote soluble extracts, fluorescence video microscopy at the single cell level was performed after pretreatment with peptidase-blocking antibodies or preimmune IgG (Fig. 6). Simi-

lar to the spectrofluorimetric data, pretreatment of TSE with anti-rPEP antibodies (Fig. 6, panels I) resulted in a delayed response, and fewer cells responded in comparison with cells preincubated with preimmune IgG (Fig. 6, panels PI). The time required for the onset of a  $\text{Ca}^{2+}$  transient after addition of control or immune IgG-treated TSE was determined in eight separate experiments (Table I). NRK cells receiving anti-rPEP IgG-treated TSE consistently showed a delayed response when compared with cells receiving preimmune treated TSE. Therefore, this data demonstrate a direct link between the activity of *T. cruzi* oligopeptidase B and the generation of  $\text{Ca}^{2+}$  transients in mammalian cells. As observed with the native purified *T. cruzi* oligopeptidase B (Tardieux et al., 1994; Burleigh and Andrews, 1995), the recombinant peptidase had no  $\text{Ca}^{2+}$ -signaling activity by itself when added to NRK cells at a specific activity equivalent to trypomastigote extracts (not shown).

### *T. cruzi* Oligopeptidase B Is Localized in the Cytoplasm of Trypomastigotes

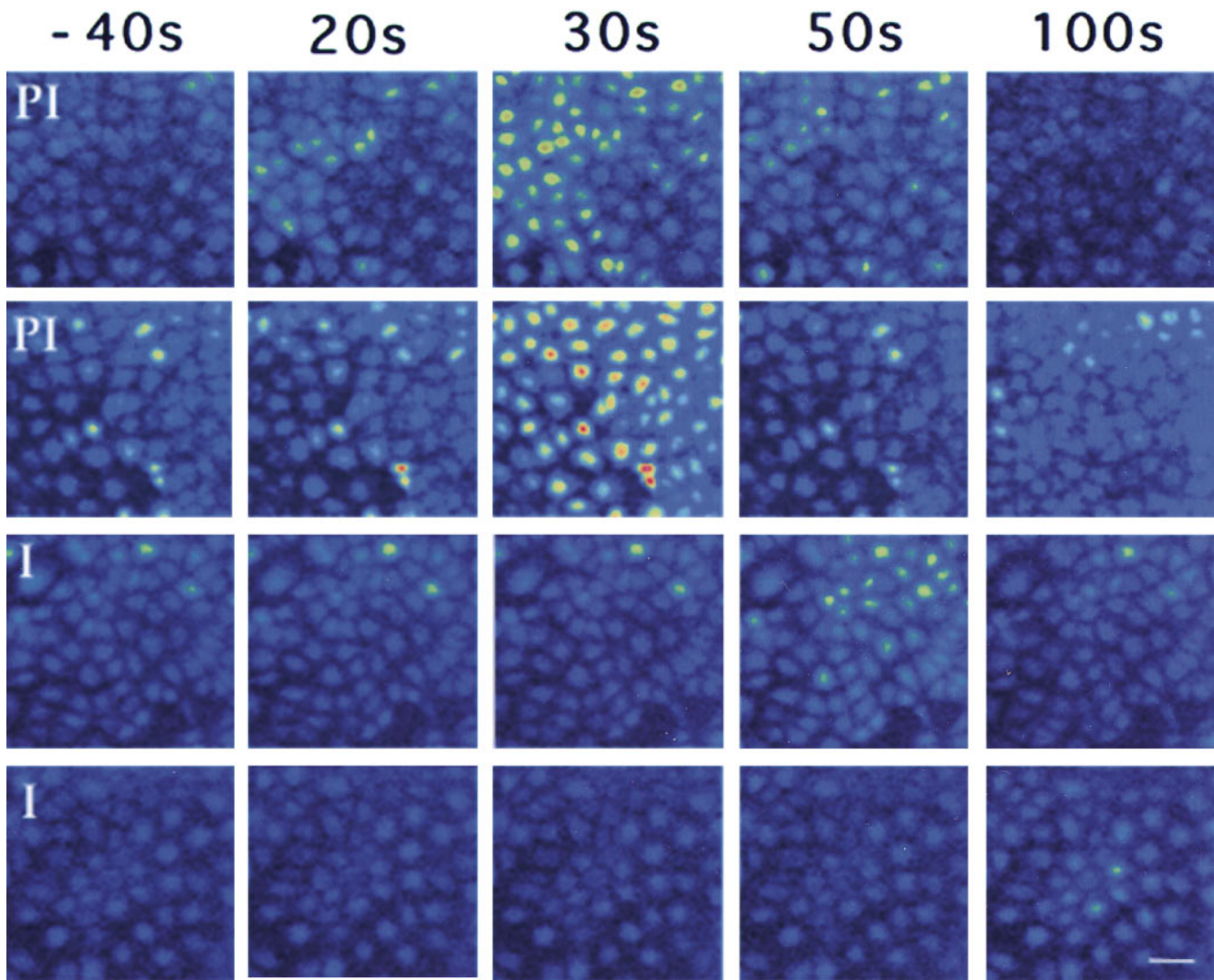
The cDNA sequence of the *T. cruzi* oligopeptidase B predicts a soluble, hydrophilic protein with no secretion signal sequence (Fig. 1). Consistent with this finding, >90% of oligopeptidase B is released in soluble form and found in the supernatant of 100,000 g centrifugations when trypomastigotes are disrupted by sonication (not shown). For determining the precise localization of the enzyme in the parasites, ultrathin cryosections of aldehyde-fixed trypomastigotes and amastigotes were labeled with affinity-purified guinea pig anti-oligopeptidase B IgG, followed by 10 nm protein A-gold. Labeling was observed throughout the cells, and appeared to be restricted to the cytosol in both trypomastigotes (Fig. 7 A) and amastigotes (Fig. 7 B). No labeling was detected on the surface of the parasites or in the flagellar pocket. In addition, no label was associated with organelles such as the ER, Golgi complex, nucleus, or kinetoplast. This pattern of labeling is consistent with a cytoplasmic localization.

### Discussion

The unusual invasion mechanism recently elucidated for *T. cruzi*, which involves recruitment and fusion of host cell lysosomes at the parasite entry site (Tardieux et al., 1992; Rodriguez et al., 1996), led us to search for signal transduction events triggered specifically by the forms capable of invading mammalian cells. A soluble factor that generates  $\text{IP}_3$  and releases  $\text{Ca}^{2+}$  from the intracellular stores of mammalian cells was detected and found to be present only in the infective trypomastigote and metacyclic life cycle stages (Tardieux et al., 1994; Burleigh and Andrews, 1995; Dorta et al., 1995; Barr et al., 1996). Buffering of host cell free intracellular  $\text{Ca}^{2+}$  (Tardieux et al., 1994) or depletion of intracellular  $\text{Ca}^{2+}$  stores (Rodriguez et al., 1995) blocked trypomastigote entry, suggesting that the  $\text{Ca}^{2+}$ -signaling activity, detected also with intact parasites, is essential for invasion.

Results from a previous study using protease inhibitors (Burleigh and Andrews, 1995) suggested that the activity of a *T. cruzi* 120-kD peptidase was coupled to the  $\text{Ca}^{2+}$ -sig-





**Figure 6.** Antibodies to the recombinant *T. cruzi* oligopeptidase B delay the onset of  $[Ca^{2+}]_i$  transients in NRK cells. Time-lapse fluorescence microscopy images of NRK cells loaded with the  $Ca^{2+}$ -sensitive dye fluo-3/AM. Images shown were acquired 40 s before, and 20, 30, 50, and 100 s after exposure to TSE. In the two experiments shown on the top of the figure, TSE was preincubated for 1 h at 4°C with 200  $\mu$ g/ml preimmune rabbit IgG (PI); in the two experiments shown at the bottom, preincubation was carried out with 200  $\mu$ g/ml anti-rPEP immune IgG (I). Fluorescence intensity is pseudocolored, with the highest  $[Ca^{2+}]_i$  shown in red and the lowest in blue. Bar, 10  $\mu$ m.

naling activity of trypomastigotes. Here, we describe the cloning of the gene encoding this peptidase, whose sequence revealed its relationship to a family of serine oligopeptidases that includes hormone-processing enzymes (Fuller et al., 1988; Kreil, 1990). Most importantly, using specific antibodies generated against the recombinant *T. cruzi* oligopeptidase B, we provide direct evidence for involvement of this enzyme in the generation of  $Ca^{2+}$  transients in mammalian cells by trypomastigote extracts. Our present results are consistent with the hypothesis that the *T. cruzi* oligopeptidase B, although not capable of signaling by itself, is required for generating a  $Ca^{2+}$ -signaling factor for mammalian cells (Burleigh and Andrews, 1995).

The *T. cruzi* oligopeptidase B shares significant sequence homology with members of the recently defined prolyl oligopeptidase family (Barrett and Rawlings, 1992). This family of serine hydrolases contains both endo- and exopeptidases, soluble and membrane-associated enzymes

that exhibit variable but quite restricted substrate specificities. Prolyl oligopeptidases contain a consensus sequence GxSxGGzz that includes the active site serine residue, and they have a proposed mechanism of catalysis involving a Ser-Asp-His charge relay system (Barrett and Rawlings, 1992). The highest degree of sequence conservation among these enzymes, including the *T. cruzi* oligopeptidase B, is observed within the COOH-terminal third of the molecule, where the catalytic residues are situated. The *T. cruzi* oligopeptidase B is most similar to the *Moraxella* and *E. coli* peptidases in terms of primary sequence and substrate specificity, cleaving substrates on the COOH-terminal side of basic amino acids (Pacaud and Richaud, 1975; Yoshimoto et al., 1995). Less identity was found between the *T. cruzi* enzyme and the *Flavobacterium*, *Aeromonas*, and pig brain peptidases, all of which are post-prolyl cleaving enzymes (Rennex et al., 1991; Yoshimoto et al., 1991; Kanatani et al., 1993). As additional peptidases containing the

**Table I. Effect of Anti-rPEP IgG on the Time of Onset of  $[Ca^{2+}]_i$  Elevation Triggered in NRK Cells by Trypomastigote Soluble Extracts**

Experiments	Onset of response <sup>‡</sup>	
	Preimmune IgG*	Anti-rPEP IgG
1	7	30
2	18	NR
3	16	NR
4	18	34
5	18	47
6	19	85
7	19	51
8	30	51

\*Preincubation of trypomastigote soluble extract (50  $\mu$ l) with 200  $\mu$ g/ml (experiments 1–6) or 500  $\mu$ g/ml (experiments 7 and 8) of purified preimmune or immune IgG was carried out at 4°C for 1 h before addition of NRK cells.

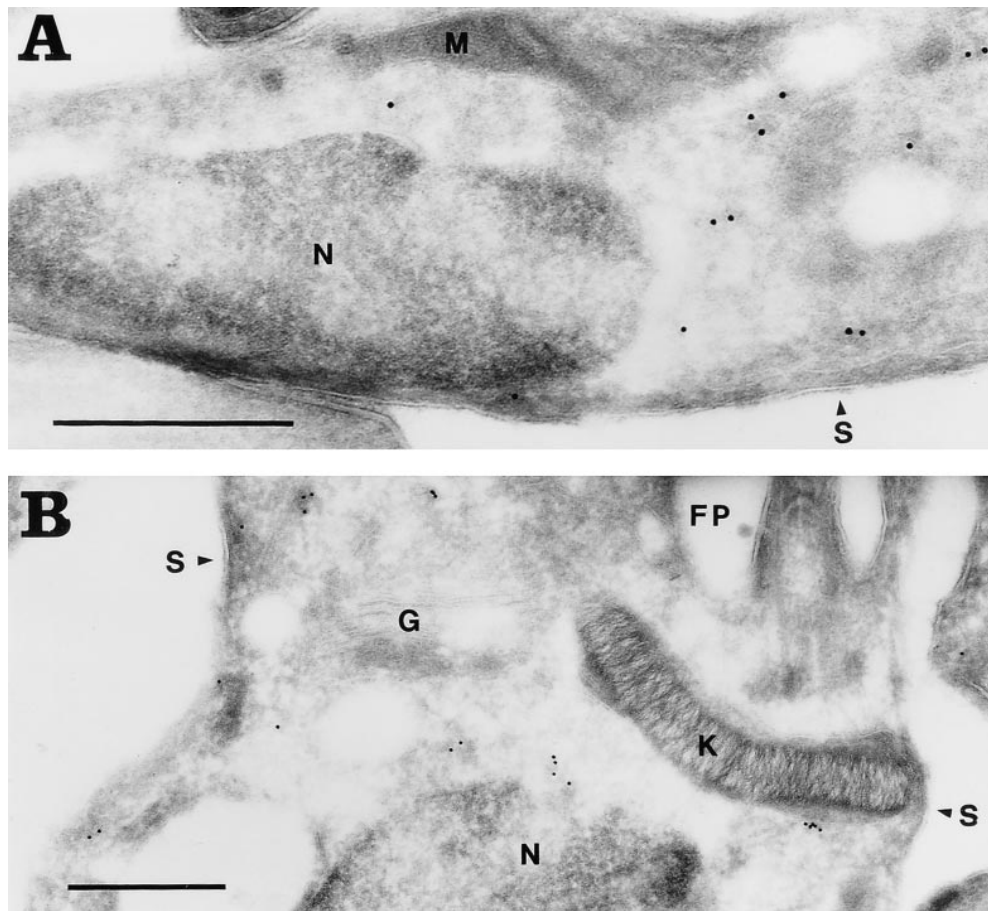
<sup>‡</sup>Time point in which the first  $[Ca^{2+}]_i$  elevation was detected at the single cell level in fluo-3-loaded NRK fibroblasts, during a time-lapse video recording of fluorescence intensity after addition of pretreated trypomastigote extracts.

NR, no response was observed in a period of 150 s.

GxSxGGzz consensus sequence are identified, a division in the prolyl oligopeptidase family may emerge, based on sequence identity as well as substrate specificity. Since the *T. cruzi* oligopeptidase B is the first protozoan member of the prolyl oligopeptidase family to be cloned and sequenced, it would be interesting to determine if similar

peptidases are present in other ancient eukaryotes. The extensive sequence similarity observed between the *T. cruzi* oligopeptidase B and the bacterial enzymes was somewhat surprising, although an additional example of a closer relationship of a trypanosome gene with bacterial but not eukaryotic homologues has recently appeared in the literature (Stebeck et al., 1996).

Physiological substrates have been identified for only a few members of the prolyl oligopeptidase family of serine peptidases. Some of them, such as the human dipeptidyl aminopeptidase IV and aminopeptidase P, were shown to cleave biologically active peptides in vitro, which led to a proposed role for these enzymes in the final degradation of mature peptide agonists (Mentlein, 1988). However, there is significant evidence that members of this family also participate in the final steps of maturation of regulatory peptides (Fuller et al., 1988; Mentlein, 1988; Kreil, 1990). One of the best characterized examples is the *Saccharomyces cerevisiae* dipeptidyl aminopeptidase A (DPAP A), which is involved in the maturation of the yeast mating hormone  $\alpha$ -factor (Fuller et al., 1988). DPAP A is a trans-Golgi enzyme that removes dipeptides from the NH<sub>2</sub> terminus of pro- $\alpha$ -factor to release the 17-amino acid active hormone as the last step in the  $\alpha$ -factor processing cascade (Fuller et al., 1988). Studies of substrate preferences for prolyl oligopeptidases have shown that these enzymes preferentially hydrolyze small peptides with an upper limit of 30 amino acids, and therefore have been described as



**Figure 7.** The *T. cruzi* oligopeptidase B is localized in the cytoplasm of the parasites. Ultrathin cryosections of aldehyde-fixed *T. cruzi* were labeled with affinity-purified guinea pig anti-oligopeptidase B IgG followed by protein A-10 nm gold. The subcellular localization of oligopeptidase B in tryptomastigotes (A) is similar to that of amastigotes (B). No labeling is detected in the nucleus (N), kinetoplast (K), mitochondrion (M), Golgi complex (G), on the parasite surface (S), or in the flagellar pocket (FP). Bar, 0.5  $\mu$ m.

“true oligopeptidases” (Barrett and Rawlings, 1992; Polgar, 1992). A notable exception is the *E. coli* oligopeptidase B, which was shown to hydrolyze aspartokinase I-homoserine dehydrogenase at a hinge region separating the two functional domains of the polypeptide (Veron et al., 1972; Pacaud and Richaud, 1975). However, cleavage of this protein by the *E. coli* peptidase does not occur in the presence of threonine, an allosteric effector for the dehydrogenase, suggesting that in larger substrates conformational changes may be required for the exposure of bonds susceptible to cleavage.

Purification and characterization of a high molecular weight alkaline peptidase from *T. cruzi* that hydrolyzes substrates on the carboxyl side of basic amino acid residues was reported previously, although no biological role was proposed for it (Ashall, 1990; Santana et al., 1992). Based on the reported characteristics, it is likely that the enzyme described in those studies is the same as the one we have now cloned and expressed. Expression of the full-length *T. cruzi* oligopeptidase B cDNA in *E. coli* resulted in the overproduction of active peptidase with identical properties to the enzyme purified from soluble parasite extracts (Burleigh and Andrews, 1995). Both enzymes migrated in SDS-PAGE gels at an apparent molecular mass of 120 kD when active, but were reduced to the predicted size of 80 kD when fully denatured. On gel filtration columns, the enzymes eluted with a molecular mass fraction of ~180 kD, suggesting dimerization.

Polyclonal antibodies directed to the purified active recombinant peptidase were effective in blocking the peptidase activity in trypanomastigote soluble extracts and also resulted in inhibition of the  $\text{Ca}^{2+}$  transients elicited in NRK fibroblasts by this fraction. Under conditions where 90% of the oligopeptidase B activity was inhibited, the generation of  $\text{Ca}^{2+}$  transients was significantly delayed and often reduced in intensity, an observation that was made while measuring the transient increase of cytosolic free  $\text{Ca}^{2+}$  in a population spectrofluorimetric assay, and also at the single cell level. Our previous results, which strongly implicated a role for oligopeptidase B in the signaling mechanism (Burleigh and Andrews, 1995), have now been confirmed. The results presented here provide direct evidence for the involvement of the *T. cruzi* oligopeptidase B in generating  $\text{Ca}^{2+}$  transients in mammalian cells.

Purified oligopeptidase B was unable to elicit  $\text{Ca}^{2+}$  transients in mammalian cells (Burleigh and Andrews, 1995), and, similarly, the recombinant oligopeptidase B had no effect. It was previously demonstrated that removal of a heparin-binding fraction from the trypanomastigote soluble extract resulted in depletion of  $\text{Ca}^{2+}$  signaling activity, whereas oligopeptidase B activity persisted (Burleigh and Andrews, 1995). It was therefore postulated that a factor(s) expressed only in invasive forms of *T. cruzi* would be processed by oligopeptidase B, as an obligatory step to generate an active  $\text{Ca}^{2+}$  agonist for mammalian cells. Assuming that the antibodies against the recombinant oligopeptidase B directly interfere with activity of the native peptidase toward its natural substrate, as indicated by the strong inhibition observed on hydrolysis of synthetic peptide substrates, the delayed  $\text{Ca}^{2+}$  response observed in the presence of anti-rPEP IgG may reflect a slower rate of agonist generation by the residual peptidase activity (10%).

We reported previously that serial dilutions of trypanomastigote soluble extracts result in proportionately decreased  $\text{Ca}^{2+}$ -signaling responses in mammalian cells (Burleigh and Andrews, 1995). Here we show that after a 90% reduction of oligopeptidase B activity in parasite extracts,  $\text{Ca}^{2+}$  transients still occur, albeit at a slower rate and reaching lower levels. This is consistent with a scenario in which the substrate is the limiting factor, with the peptidase being required only in small amounts as a result of continuous turnover during the catalytic process.

The pattern of  $\text{Ca}^{2+}$  signaling induced in mammalian cells by intact trypanomastigotes is asynchronous and repetitive (Tardieux et al., 1994), in contrast with parasite-soluble extracts that trigger a major simultaneous  $\text{Ca}^{2+}$  transient in all cells of the population (Burleigh and Andrews, 1995). This suggests that the processed trypanomastigote signaling factor may be released from live parasites in small amounts and delivered to host cells in a localized fashion. This scenario is consistent with the recent demonstration that recruitment of host cell lysosomes, a process proposed to be regulated by  $[\text{Ca}^{2+}]_i$  transients, is highly localized, involving only lysosomes located at ~10  $\mu\text{m}$  from the parasite invasion site (Rodriguez et al., 1996).

The postulated role of the *T. cruzi* oligopeptidase B in the processing of an immature agonist of trypanomastigotes is consistent with its structural relationship to enzymes with a very restricted substrate specificity, including the yeast DPAP A that has a known role in prohormone processing. The lack of a secretion signal sequence and the cytosolic localization of the *T. cruzi* oligopeptidase B imply that the postulated processing steps must occur in the cytoplasm of the parasites, with the putative active factor being released by an unconventional mechanism. An alternative pathway for the extracellular release of polypeptides lacking classical secretory signal sequences is emerging (Cooper and Barondes, 1990; Muesch et al., 1990; Rubartelli et al., 1992; Florkiewicz et al., 1995; Siders and Mizel, 1995). Some of the proteins in this group have clearly defined signaling roles outside cells, for example, interleukin (IL)-1 $\beta$  (Siders and Mizel, 1995) and basic FGF (Florkiewicz et al., 1995). In the case of IL-1 $\beta$ , conversion from pro-IL-1 $\beta$  to the active IL-1 $\beta$  is known to be mediated by a cytosolic cysteine protease, ICE (Kostura et al., 1989; Cerretti et al., 1992). Little is known about the export mechanism of cytoplasmically processed polypeptides, except that agents that perturb Golgi function do not block it, and that vesiculation of the plasma membrane has been implicated in some cases (Cooper and Barondes, 1990; Florkiewicz et al., 1995). A recent report identified genes involved in nonclassical protein export in yeast (Cleves et al., 1996), and at least one of these genes resembles small bacterial membrane proteins that function as transporters (Lewis, 1994). Now that we have determined that the *T. cruzi* oligopeptidase B, involved in triggering  $\text{Ca}^{2+}$  signaling in mammalian cells, is cytosolic, a search for the processed factor and its release mechanism may provide useful new information about this intriguing process.

We acknowledge the contribution to this work by members of the W.M. Keck Foundation Biotechnology Resource Laboratory at Yale University School of Medicine, for carrying out protein microsequencing, oligonucleotide synthesis, and DNA sequencing. We are grateful to S. Teixeira and J. Donelson for providing the *T. cruzi* cDNA library, A.K. Ma for excel-

lent technical assistance, H. Tan for photography, L. Iadorola and L. Hartnell for EM, A.M. Quinn for assistance with sequence alignments, and C. Tschudi and E. Ullu for helpful discussions.

This work was funded by National Institutes of Health grant R01AI32056 to N.W. Andrews. B. Burleigh was supported by a postdoctoral fellowship from the Medical Research Council of Canada.

Received for publication 17 September 1996 and in revised form 13 November 1996.

## References

- Andrews, N.W., K.S. Hong, E.S. Robbins, and V. Nussenzweig. 1987. Stage-specific surface antigens expressed during the morphogenesis of vertebrate forms of *Trypanosoma cruzi*. *Exp. Parasitol.* 64:474-484.
- Ashall, F. 1990. Characterization of an alkaline peptidase of *Trypanosoma cruzi* and other trypanosomatids. *Mol. Biochem. Parasitol.* 38:77-87.
- Barr, S.C., W.P. Han, N.W. Andrews, J.W. Lopez, B.A. Ball, T.L. Pannabecker, and R.F. Gilmour, Jr. 1996. A factor from *Trypanosoma cruzi* induces repetitive cytosolic free  $Ca^{2+}$  transients in isolated primary canine cardiac myocytes. *Infect. Immun.* 64:1770-1777.
- Barrett, A.J., and N.D. Rawlings. 1992. Oligopeptidases, and the emergence of the prolyl oligopeptidase family. *Biol. Chem. Hoppe-Seyler.* 373:353-360.
- Bliska, J.B., J.E. Galan, and S. Falkow. 1993. Signal transduction in the mammalian cell during bacterial attachment and entry. *Cell.* 73:903-920.
- Brener, Z. 1973. Biology of *Trypanosoma cruzi*. *Annu. Rev. Microbiol.* 27:347-383.
- Burleigh, B.A., and N.W. Andrews. 1995. A 120 kDa alkaline peptidase from *Trypanosoma cruzi* is involved in the generation of a novel  $Ca^{2+}$ -signaling factor for mammalian cells. *J. Biol. Chem.* 270:5172-5180.
- Cazzulo, J.J., R. Couso, A. Raimondi, C. Wernstedt, and U. Hellman. 1989. Further characterization and partial amino acid sequence of a cysteine proteinase from *Trypanosoma cruzi*. *Mol. Biochem. Parasitol.* 33:33-42.
- Cerretti, D.P., C.J. Kozlosky, B. Mosley, N. Nelson, K. Van Ness, T.A. Greenstreet, C. March, S.R. Kronheim, T. Druck, and L.A. Cannizzaro. 1992. Molecular cloning of the interleukin-1 beta converting enzyme. *Science (Wash. DC).* 256:97-100.
- Chomczynski, P., and N. Sacchi. 1987. Single-step method of RNA isolation by acid guanidinium thiocyanate-phenol-chloroform extraction. *Anal. Biochem.* 162:156-159.
- Cleves, A.E., D.N.W. Cooper, S.H. Barondes, and R.B. Kelly. 1996. A new pathway for protein export in *Saccharomyces cerevisiae*. *J. Cell Biol.* 133:1017-1026.
- Cooper, D.N.W., and S.H. Barondes. 1990. Evidence for export of a muscle lectin from cytosol to extracellular matrix and for a novel secretory mechanism. *J. Cell Biol.* 110:1681-1691.
- Dorta, M.L., A.T. Ferreira, M.E.M. Oshiro, and N. Yoshida. 1995.  $Ca^{2+}$  signal induced by *Trypanosoma cruzi* metacyclic trypomastigote surface molecules implicated in mammalian cell invasion. *Mol. Biochem. Parasitol.* 73:285-289.
- Florkiewicz, R.Z., R.A. Majack, R.D. Buechler, and E. Florkiewicz. 1995. Quantitative export of FGF-2 occurs through an alternative, energy-dependent non-ER/Golgi pathway. *J. Cell Physiol.* 162:388-399.
- Fuller, R.S., R.E. Sterne, and J. Thorner. 1988. Enzymes required for yeast pro-hormone processing. *Annu. Rev. Physiol.* 50:345-362.
- Galan, J.E. 1994. Interactions of bacteria with non-phagocytic cells. *Curr. Opin. Immunol.* 6:590-595.
- Harlow, E., and D. Lane. 1988. *Antibodies: A Laboratory Manual*. Cold Spring Harbor Laboratory, Cold Spring Harbor, NY. 726 pp.
- Heuser, J.E. 1989. Changes in lysosome shape and distribution correlated with changes in cytoplasmic pH. *J. Cell Biol.* 108:855-864.
- Kanatani, A., T. Masuda, T. Shimoda, F. Misoka, X. Sheng Lin, T. Yoshimoto, and D. Tsuru. 1991. Protease II from *Escherichia coli*: sequencing and expression of the enzyme gene and characterization of the expressed enzyme. *J. Biochem. (Tokyo).* 110:315-320.
- Kanatani, A., T. Yoshimoto, A. Kitazono, T. Kokubo, and D. Tsuru. 1993. Prolyl endopeptidase from *Aeromonas hydrophila*: cloning, sequencing, and expression of enzyme gene, and characterization of the expressed enzyme. *J. Biochem. (Tokyo).* 113:790-796.
- Kostura, M.J., M.J. Tocci, G. Limjuco, J. Chin, P. Cameron, A.G. Hillman, N.A. Chartrain, and J.A. Schmidt. 1989. Identification of a monocyte specific pre-interleukin 1 beta convertase activity. *Proc. Natl. Acad. Sci. USA.* 86:5227-5231.
- Kreil, G. 1990. Processing of precursors by dipeptidylaminopeptidases: a case of molecular ticketing. *Trends Biochem. Sci.* 15:23-26.
- Laemmli, U.K. 1970. Cleavage of structural proteins during the assembly of the head of bacteriophage T4. *Nature (Lond.)* 227:680-685.
- Lewis, K. 1994. Multidrug resistance pumps in bacteria: variations on a theme. *Trends Biochem. Sci.* 19:119-123.
- Ley, V., E.S. Robbins, V. Nussenzweig, and N.W. Andrews. 1990. The exit of *Trypanosoma cruzi* from the phagosome is inhibited by raising the pH of acidic compartments. *J. Exp. Med.* 171:401-413.
- Medina-Acosta, E., and G.A.M. Cross. 1993. Rapid isolation of DNA from trypanosomatid protozoa using a simple 'mini-prep' procedure. *Mol. Biochem. Parasitol.* 59:327-329.
- Meirelles, M.N.L., and W. de Souza. 1983. Interaction of lysosomes with endocytic vacuoles in macrophages simultaneously infected with *Trypanosoma cruzi* and *Toxoplasma gondii*. *J. Submicrosc. Cytol. Pathol.* 17:327-334.
- Menard, R., C. Dehio, and P.J. Sansonetti. 1996. Bacterial entry into epithelial cells: the paradigm of *Shigella*. *Trends Microbiol.* 4:220-226.
- Mentlein, R. 1988. Proline residues in the maturation and degradation of peptide hormones and neuropeptides. *FEBS (Fed. Eur. Biochem. Soc.) Lett.* 234:251-256.
- Ming, M., M.E. Ewen, and M.E.A. Pereira. 1995. Trypanosome invasion of mammalian cells requires activation of the TGF $\beta$  signaling pathway. *Cell.* 82:287-296.
- Muesch, A., E. Hartmann, K. Rohde, A. Rubartelli, R. Sitia, and T.A. Rapoport. 1990. A novel pathway for secretory proteins? *Trends Biochem. Sci.* 15:86-88.
- Nogueira, N., and Z. Cohn. 1976. *Trypanosoma cruzi*: mechanism of entry and intracellular fate in mammalian cells. *J. Exp. Med.* 143:1402-1420.
- Pacaud, M., and C. Richaud. 1975. Protease II from *Escherichia coli*. *J. Biol. Chem.* 250:7771-7779.
- Polgar, L. 1992. Unusual secondary specificity of prolyl oligopeptidase and the different reactivities of its two forms toward charged substrates. *Biochemistry.* 31:7729-7735.
- Rennex, D., B.A. Hemmings, J. Hofsteenge, and S.R. Stone. 1991. cDNA cloning of porcine brain prolyl endopeptidase and identification of the active-site seryl residue. *Biochemistry.* 30:2195-2203.
- Rodriguez, A., M.G. Rioult, A. Ora, and N.W. Andrews. 1995. A trypanosome-soluble factor induces IP $_3$  formation, intracellular  $Ca^{2+}$  mobilization and microfilament rearrangement in host cells. *J. Cell Biol.* 129:1263-1273.
- Rodriguez, A., E. Samoff, M.G. Rioult, A. Chung, and N.W. Andrews. 1996. Host cell invasion by trypanosomes requires lysosomes and microtubule/kinesin-mediated transport. *J. Cell Biol.* 134:349-362.
- Rubartelli, A., A. Bajetto, G. Allavena, E. Wollman, and R. Sitia. 1992. Secretion of thioredoxin by normal and neoplastic cells through a leaderless secretory pathway. *J. Biol. Chem.* 267:24161-24164.
- Santana, J.M., P. Grellier, M.-H. Rodier, J. Schrevel, and A. Teixeira. 1992. Purification and characterization of a new 120-kD alkaline proteinase of *Trypanosoma cruzi*. *Biochem. Biophys. Res. Commun.* 187:1466-1473.
- Schenkman, S., E.S. Robbins, and V. Nussenzweig. 1991. Attachment of *Trypanosoma cruzi* to mammalian cells requires parasite energy, and invasion can be independent of the target cell cytoskeleton. *Infect. Immun.* 59:645-654.
- Segel, I.H. 1976. *Biochemical Calculations*. Second edition. John Wiley & Sons, Inc., New York. 214-236.
- Siders, W.M., and S.B. Mizel. 1995. Interleukin- $\beta$  secretion. *J. Biol. Chem.* 270:16258-16264.
- Stebeck, C.E., U. Frevert, T.P. Mommsen, E. Vassella, I. Roditi, and T.W. Pearson. 1996. Molecular characterization of glycosomal NAD $^{+}$ -dependent glycerol 3-phosphate dehydrogenase from *Trypanosoma brucei rhodesiense*. *Mol. Biochem. Parasitol.* 76:145-158.
- Stone, S.R., D. Rennex, P. Wikstrom, E. Shaw, and J. Hofsteenge. 1991. Inactivation of prolyl endopeptidase by a peptidylchloromethane. *Biochem. J.* 276:837-840.
- Tardieux, I., P. Webster, J. Ravesloot, W. Boron, J.A. Lunn, J.E. Heuser, and N.W. Andrews. 1992. Lysosome recruitment and fusion are early events required for trypanosome invasion of mammalian cells. *Cell.* 71:1117-1130.
- Tardieux, I., M.H. Nathanson, and N.W. Andrews. 1994. Role in host cell invasion of *Trypanosoma cruzi*-induced cytosolic free  $Ca^{2+}$  transients. *J. Exp. Med.* 179:1017-1022.
- Towbin, H., T. Staehelin, and J. Gordon. 1979. Electrophoretic transfer of proteins from polyacrylamide gels to nitrocellulose sheets: procedure and some applications. *Proc. Natl. Acad. Sci. USA.* 76:4350-4354.
- Tsuru, D., and T. Yoshimoto. 1994. Oligopeptidase B: protease II from *Escherichia coli*. *Methods Enzymol.* 244:201-215.
- Veron, M., F. Falcoz-Kelly, and G.N. Cohen. 1972. The threonine-sensitive homoserine dehydrogenase and aspartokinase activities of *Escherichia coli* K12. *Eur. J. Biochem.* 28:520-527.
- Webster, P., and D.J. Grab. 1988. Intracellular colocalization of variant surface glycoprotein and transferrin-gold in *Trypanosoma brucei*. *J. Cell Biol.* 106:279-288.
- Yamamoto, Y., T.W. Klein, and H. Friedman. 1996. Induction of cytokine granulocyte-macrophage colony-stimulating factor and chemokine macrophage inflammatory protein 2 mRNAs in macrophages by *Legionella pneumophila* or *Salmonella typhimurium* attachment requires different ligand-receptor systems. *Infect. Immun.* 64:3062-3068.
- Yoshida, N. 1986. *Trypanosoma cruzi*: recognition of trypomastigote surface antigens by lytic antisera from mice resistant to acute infection. *Exp. Parasitol.* 61:184-191.
- Yoshimoto, T., A. Kanatani, T. Shimoda, T. Inaoka, T. Kokubo, and D. Tsuru. 1991. Prolyl endopeptidase from *Flavobacterium meningosepticum*: cloning and sequencing of the enzyme gene. *J. Biochem. (Tokyo).* 110:873-878.
- Yoshimoto, T., J. Tabira, T. Kabashima, S. Inoue, and K. Ito. 1995. Protease II from *Moraxella lacunata*: cloning, sequencing, and expression of the enzyme gene, and crystallization of the expressed enzyme. *J. Biochem. (Tokyo).* 117:654-660.