

## catena-Poly[[bis(pyrazine-2-carboxamide)mercury(II)]-di- $\mu$ -chlorido]

Alireza Azhdari Tehrani, Bahareh Mir Mohammad Sadegh and Hamid Reza Khavasi\*

Department of Chemistry, Shahid Beheshti University, G.C., Evin, Tehran 1983963113, Iran

Correspondence e-mail: h-khavasi@sbu.ac.ir

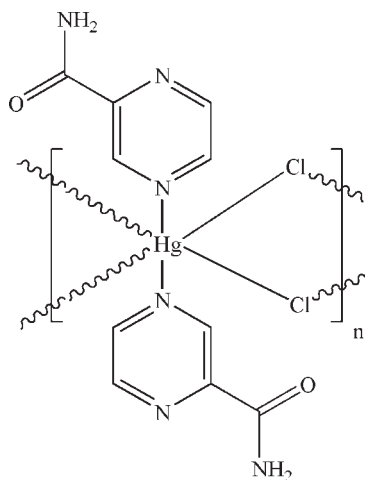
Received 3 January 2010; accepted 1 February 2010

Key indicators: single-crystal X-ray study;  $T = 298$  K; mean  $\sigma(\text{C}-\text{C}) = 0.011$  Å;  $R$  factor = 0.054;  $wR$  factor = 0.144; data-to-parameter ratio = 19.5.

In the polymeric title compound,  $[\text{HgCl}_2(\text{C}_5\text{H}_5\text{N}_3\text{O}_2)_2]_n$ , the  $\text{Hg}^{\text{II}}$  atom (site symmetry  $\bar{1}$ ) adopts a distorted *trans*- $\text{HgN}_2\text{Cl}_4$  octahedral coordination geometry. In the crystal, adjacent mercury ions are bridged by pairs of chloride ions, generating infinite  $[100]$  chains, and  $\text{N}-\text{H}\cdots\text{O}$  and  $\text{N}-\text{H}\cdots(\text{N},\text{N})$  hydrogen bonds help to consolidate the packing.

### Related literature

For related structures, see: Cati & Stoeckli-Evans (2004); Hausmann & Brooker (2004); Mir Mohammad Sadegh *et al.* (2010); Miyazaki *et al.* (2007).



### Experimental

#### Crystal data

$[\text{HgCl}_2(\text{C}_5\text{H}_5\text{N}_3\text{O}_2)_2]$   
 $M_r = 517.73$   
 Triclinic,  $P\bar{1}$

$a = 3.8451$  (8) Å  
 $b = 6.4170$  (13) Å  
 $c = 14.854$  (3) Å

$\alpha = 101.14$  (3)°  
 $\beta = 92.53$  (3)°  
 $\gamma = 94.69$  (3)°  
 $V = 357.73$  (13) Å<sup>3</sup>  
 $Z = 1$

Mo  $K\alpha$  radiation  
 $\mu = 11.14$  mm<sup>-1</sup>  
 $T = 298$  K  
 $0.48 \times 0.15 \times 0.06$  mm

#### Data collection

Stoe IPDS II diffractometer  
 Absorption correction: numerical  
 [optically, by *X-RED* and  
*XSHAPE* (Stoe & Cie, 2005)]  
 $T_{\text{min}} = 0.150$ ,  $T_{\text{max}} = 0.515$

4201 measured reflections  
 1887 independent reflections  
 1880 reflections with  $I > 2\sigma(I)$   
 $R_{\text{int}} = 0.096$

#### Refinement

$R[F^2 > 2\sigma(F^2)] = 0.054$   
 $wR(F^2) = 0.144$   
 $S = 1.08$   
 1887 reflections

97 parameters  
 H-atom parameters constrained  
 $\Delta\rho_{\text{max}} = 3.25$  e Å<sup>-3</sup>  
 $\Delta\rho_{\text{min}} = -3.75$  e Å<sup>-3</sup>

**Table 1**

Selected geometric parameters (Å, °).

Hg1–N2	2.661 (7)	Hg1–Cl1	2.375 (2)
Hg1–Cl1 <sup>i</sup>	2.970 (2)		
Hg1–Cl1–Hg1 <sup>ii</sup>	91.31 (7)		

Symmetry codes: (i)  $x - 1, y, z$ ; (ii)  $x + 1, y, z$ .

**Table 2**

Hydrogen-bond geometry (Å, °).

$D-\text{H}\cdots A$	$D-\text{H}$	$\text{H}\cdots A$	$D\cdots A$	$D-\text{H}\cdots A$
$\text{N3}-\text{H3A}\cdots\text{O1}^{\text{iii}}$	0.86	2.01	2.864 (12)	176
$\text{N3}-\text{H3B}\cdots\text{N1}$	0.86	2.40	2.758 (12)	105
$\text{N3}-\text{H3B}\cdots\text{N1}^{\text{iv}}$	0.86	2.54	3.198 (12)	134

Symmetry codes: (iii)  $-x + 2, -y, -z + 1$ ; (iv)  $-x + 1, -y + 1, -z + 1$ .

Data collection: *X-AREA* (Stoe & Cie, 2005); cell refinement: *X-AREA*; data reduction: *X-AREA*; program(s) used to solve structure: *SHELXTL* (Sheldrick, 2008); program(s) used to refine structure: *SHELXTL*; molecular graphics: *ORTEP-3* (Farrugia, 1997); software used to prepare material for publication: *WinGX* (Farrugia, 1999).

The authors wish to acknowledge Shahid Beheshti University, G.C., for financial support.

Supplementary data and figures for this paper are available from the IUCr electronic archives (Reference: HB5301).

### References

- Cati, D. S. & Stoeckli-Evans, H. (2004). *Acta Cryst.* **E60**, m177–m179.  
 Farrugia, L. J. (1997). *J. Appl. Cryst.* **30**, 565.  
 Farrugia, L. J. (1999). *J. Appl. Cryst.* **32**, 837–838.  
 Hausmann, J. & Brooker, S. (2004). *Chem. Commun.* pp. 1530–1531.  
 Mir Mohammad Sadegh, B., Azhdari Tehrani, A. & Khavasi, H. R. (2010). *Acta Cryst.* **E66**, m158.  
 Miyazaki, S., Ohkubo, K., Kojima, T. & Fukuzumi, S. (2007). *Angew. Chem. Int. Ed.* **46**, 905–908.  
 Sheldrick, G. M. (2008). *Acta Cryst.* **A64**, 112–122.  
 Stoe & Cie (2005). *X-AREA, X-RED* and *XSHAPE*. Stoe & Cie, Darmstadt, Germany.

**supplementary materials**

*Acta Cryst.* (2010). E66, m261 [ doi:10.1107/S1600536810003879 ]

## ***catena*-Poly[[bis(pyrazine-2-carboxamide)mercury(II)]-di- $\mu$ -chlorido]**

**A. Azhdari Tehrani, B. Mir Mohammad Sadegh and H. R. Khavasi**

### **Comment**

The coordination chemistry of pyrazineamides is rich. Examples of coordination *via* the pyrazine N atoms, the carbonyl O atoms and the amide N atoms of the ligand in a non-, mono-, or bis-deprotonated form are known (Hausmann and Brooker, 2004; Cati & Stoeckli-Evans, 2004; Miyazaki *et al.* 2007) and metal complexes of the ligands have been used extensively to mimic the properties of biologically active systems. Here we synthesized the title compound, (I), and report here its crystal structure.

The asymmetric unit of the title compound, (I), contains one half-molecule (Fig. 1). The Hg<sup>II</sup> atom is six-coordinated in a distorted octahedral configuration by two N atoms from pyrazine amides and four bridging Cl atoms. The bridging function of chloro atoms leads to a one-dimensional chain structure. The Hg—Cl and Hg—N bond lengths and angles (Table 1) are within normal ranges. In the crystal structure (Fig. 2), intermolecular N—H $\cdots$ O and N—H $\cdots$ N hydrogen bonds (Table 2) result in the formation of a supramolecular structure, in which they may be effective in the stabilization of the structure.

### **Experimental**

A solution of pyrazineamide (0.246 g, 2.0 mmol) in methanol (10 ml) was added to a solution of HgCl<sub>2</sub> (0.272 g, 1.0 mmol) in methanol (5 ml) at room temperature. Colourless plates of (I) were obtained by slow evaporation from methanolic solution after one week (yield; 0.359 g, 69.3%).

### **Refinement**

All of the H atoms were positioned geometrically with C—H = 0.93 and 0.86 Å for aromatic ring and NH<sub>2</sub> hydrogen atoms respectively, and constrained to ride on their parent atoms, with  $U_{\text{iso}}(\text{H}) = 1.2U_{\text{eq}}(\text{C})$ . The largest peak and deepest hole are near to Hg (0.87 and 0.75 Å respectively).

### **Figures**

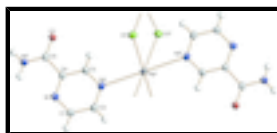


Fig. 1. The molecular structure with displacement ellipsoids drawn at 30% probability level.

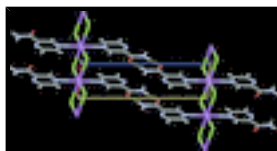


Fig. 2. A packing diagram of (I) in b-direction. Hydrogen bonds are shown as dashed lines.

## catena-Poly[[bis(pyrazine-2-carboxamide)mercury(II)]-di- $\mu$ -chlorido]

### Crystal data

[HgCl <sub>2</sub> (C <sub>5</sub> H <sub>5</sub> N <sub>3</sub> O) <sub>2</sub> ]	$Z = 1$
$M_r = 517.73$	$F(000) = 242$
Triclinic, $PT$	$D_x = 2.403 \text{ Mg m}^{-3}$
Hall symbol: $-P 1$	Mo $K\alpha$ radiation, $\lambda = 0.71073 \text{ \AA}$
$a = 3.8451 (8) \text{ \AA}$	Cell parameters from 976 reflections
$b = 6.4170 (13) \text{ \AA}$	$\theta = 3.3\text{--}29.1^\circ$
$c = 14.854 (3) \text{ \AA}$	$\mu = 11.14 \text{ mm}^{-1}$
$\alpha = 101.14 (3)^\circ$	$T = 298 \text{ K}$
$\beta = 92.53 (3)^\circ$	Plate, colourless
$\gamma = 94.69 (3)^\circ$	$0.48 \times 0.15 \times 0.06 \text{ mm}$
$V = 357.73 (13) \text{ \AA}^3$	

### Data collection

Stoe IPDS II diffractometer	1880 reflections with $I > 2\sigma(I)$
$\omega$ scans	$R_{\text{int}} = 0.096$
Absorption correction: numerical [optically, by XRED and XSHAPE (Stoe & Cie, 2005)]	$\theta_{\text{max}} = 29.1^\circ$ , $\theta_{\text{min}} = 3.3^\circ$
$T_{\text{min}} = 0.150$ , $T_{\text{max}} = 0.515$	$h = -5 \rightarrow 4$
4201 measured reflections	$k = -8 \rightarrow 8$
1887 independent reflections	$l = -20 \rightarrow 20$

### Refinement

Refinement on $F^2$	0 restraints
Least-squares matrix: full	H-atom parameters constrained
$R[F^2 > 2\sigma(F^2)] = 0.054$	$w = 1/[\sigma^2(F_o^2) + (0.110P)^2 + 0.204P]$
$wR(F^2) = 0.144$	where $P = (F_o^2 + 2F_c^2)/3$
$S = 1.08$	$(\Delta/\sigma)_{\text{max}} < 0.001$
1887 reflections	$\Delta\rho_{\text{max}} = 3.25 \text{ e \AA}^{-3}$
97 parameters	$\Delta\rho_{\text{min}} = -3.75 \text{ e \AA}^{-3}$

### Special details

**Geometry.** All e.s.d.'s (except the e.s.d. in the dihedral angle between two l.s. planes) are estimated using the full covariance matrix. The cell e.s.d.'s are taken into account individually in the estimation of e.s.d.'s in distances, angles and torsion angles; correlations between e.s.d.'s in cell parameters are only used when they are defined by crystal symmetry. An approximate (isotropic) treatment of cell e.s.d.'s is used for estimating e.s.d.'s involving l.s. planes.

Fractional atomic coordinates and isotropic or equivalent isotropic displacement parameters ( $\text{\AA}^2$ )

	x	y	z	$U_{\text{iso}}^*/U_{\text{eq}}$
C1	0.397 (3)	0.5265 (12)	0.2863 (6)	0.0431 (16)
H1	0.3077	0.6583	0.3014	0.052*
C2	0.400 (3)	0.4268 (13)	0.1935 (6)	0.0431 (16)
H2	0.3177	0.4953	0.1482	0.052*
C3	0.632 (2)	0.1435 (13)	0.2363 (6)	0.0391 (14)
H3	0.7083	0.008	0.2215	0.047*
C4	0.639 (2)	0.2438 (11)	0.3279 (5)	0.0341 (12)
C5	0.793 (2)	0.1365 (12)	0.3999 (6)	0.0385 (14)
N1	0.520 (2)	0.4354 (11)	0.3536 (5)	0.0429 (14)
N2	0.519 (2)	0.2350 (11)	0.1690 (5)	0.0412 (13)
N3	0.784 (3)	0.2340 (13)	0.4863 (6)	0.0516 (19)
H3A	0.8724	0.1795	0.5296	0.062*
H3B	0.6888	0.352	0.4994	0.062*
O1	0.924 (3)	-0.0327 (12)	0.3755 (5)	0.0539 (18)
Cl1	0.8689 (6)	-0.2371 (3)	0.05218 (16)	0.0444 (4)
Hg1	0.5	0	0	0.03963 (18)

Atomic displacement parameters ( $\text{\AA}^2$ )

	$U^{11}$	$U^{22}$	$U^{33}$	$U^{12}$	$U^{13}$	$U^{23}$
C1	0.054 (4)	0.036 (3)	0.041 (4)	0.016 (3)	-0.005 (3)	0.007 (3)
C2	0.056 (4)	0.042 (3)	0.034 (4)	0.011 (3)	0.000 (3)	0.012 (3)
C3	0.046 (4)	0.042 (3)	0.029 (3)	0.016 (3)	0.001 (3)	0.004 (2)
C4	0.038 (3)	0.036 (3)	0.029 (3)	0.009 (2)	-0.001 (3)	0.006 (2)
C5	0.045 (4)	0.040 (3)	0.030 (3)	0.006 (3)	-0.004 (3)	0.008 (2)
N1	0.052 (4)	0.038 (3)	0.038 (3)	0.012 (2)	-0.001 (3)	0.003 (2)
N2	0.049 (4)	0.045 (3)	0.031 (3)	0.014 (2)	-0.001 (3)	0.007 (2)
N3	0.077 (6)	0.045 (3)	0.035 (3)	0.032 (3)	-0.003 (3)	0.003 (3)
O1	0.084 (5)	0.047 (3)	0.033 (3)	0.033 (3)	0.001 (3)	0.004 (2)
Cl1	0.0448 (9)	0.0477 (9)	0.0434 (10)	0.0146 (7)	0.0022 (8)	0.0114 (7)
Hg1	0.0397 (2)	0.0505 (3)	0.0305 (2)	0.01765 (14)	-0.00015 (15)	0.00733 (15)

Geometric parameters ( $\text{\AA}$ ,  $^\circ$ )

C1—N1	1.340 (12)	C5—N3	1.318 (11)
C1—C2	1.404 (12)	N3—H3A	0.86
C1—H1	0.93	N3—H3B	0.86
C2—N2	1.338 (11)	Cl1—Hg1 <sup>i</sup>	2.970 (2)
C2—H2	0.93	Hg1—Cl1 <sup>ii</sup>	2.375 (2)
C3—N2	1.327 (11)	Hg1—N2 <sup>ii</sup>	2.661 (7)
C3—C4	1.387 (10)	Hg1—Cl1 <sup>iii</sup>	2.970 (2)
C3—H3	0.93	Hg1—N2	2.661 (7)
C4—N1	1.338 (10)	Hg1—Cl1 <sup>iv</sup>	2.970 (2)
C4—C5	1.506 (11)	Hg1—Cl1	2.375 (2)

## supplementary materials

C5—O1	1.232 (11)		
N1—C1—C2	121.3 (7)	C5—N3—H3A	120
N1—C1—H1	119.4	C5—N3—H3B	120
C2—C1—H1	119.4	H3A—N3—H3B	120
N2—C2—C1	121.3 (8)	Hg1—Cl1—Hg1 <sup>i</sup>	91.31 (7)
N2—C2—H2	119.4	Cl1 <sup>ii</sup> —Hg1—Cl1	180.0
C1—C2—H2	119.4	Cl1 <sup>ii</sup> —Hg1—N2	89.49 (17)
N2—C3—C4	122.0 (7)	Cl1—Hg1—N2	90.51 (17)
N2—C3—H3	119	Cl1 <sup>ii</sup> —Hg1—N2 <sup>ii</sup>	90.51 (17)
C4—C3—H3	119	Cl1—Hg1—N2 <sup>ii</sup>	89.49 (17)
N1—C4—C3	121.7 (8)	N2—Hg1—N2 <sup>ii</sup>	180.0
N1—C4—C5	119.3 (7)	Cl1 <sup>ii</sup> —Hg1—Cl1 <sup>iii</sup>	91.31 (7)
C3—C4—C5	118.9 (7)	Cl1—Hg1—Cl1 <sup>iii</sup>	88.69 (7)
O1—C5—N3	124.0 (8)	N2—Hg1—Cl1 <sup>iii</sup>	94.05 (18)
O1—C5—C4	119.1 (7)	N2 <sup>ii</sup> —Hg1—Cl1 <sup>iii</sup>	85.95 (18)
N3—C5—C4	116.9 (7)	Cl1 <sup>ii</sup> —Hg1—Cl1 <sup>iv</sup>	88.69 (7)
C4—N1—C1	116.7 (7)	Cl1—Hg1—Cl1 <sup>iv</sup>	91.31 (7)
C3—N2—C2	117.0 (7)	N2—Hg1—Cl1 <sup>iv</sup>	85.95 (18)
C3—N2—Hg1	116.0 (5)	N2 <sup>ii</sup> —Hg1—Cl1 <sup>iv</sup>	94.05 (18)
C2—N2—Hg1	126.8 (6)	Cl1 <sup>iii</sup> —Hg1—Cl1 <sup>iv</sup>	180.0
N1—C1—C2—N2	1.5 (15)	C1—C2—N2—Hg1	174.2 (7)
N2—C3—C4—N1	2.4 (13)	Hg1 <sup>i</sup> —Cl1—Hg1—N2	-94.04 (18)
N2—C3—C4—C5	-175.8 (8)	Hg1 <sup>i</sup> —Cl1—Hg1—N2 <sup>ii</sup>	85.96 (18)
N1—C4—C5—O1	-174.9 (9)	Hg1 <sup>i</sup> —Cl1—Hg1—Cl1 <sup>iii</sup>	0
C3—C4—C5—O1	3.3 (12)	Hg1 <sup>i</sup> —Cl1—Hg1—Cl1 <sup>iv</sup>	180
N1—C4—C5—N3	4.0 (12)	C3—N2—Hg1—Cl1 <sup>ii</sup>	163.8 (6)
C3—C4—C5—N3	-177.8 (9)	C2—N2—Hg1—Cl1 <sup>ii</sup>	-10.0 (8)
C3—C4—N1—C1	-0.5 (12)	C3—N2—Hg1—Cl1	-16.2 (6)
C5—C4—N1—C1	177.7 (8)	C2—N2—Hg1—Cl1	170.0 (8)
C2—C1—N1—C4	-1.4 (13)	C3—N2—Hg1—Cl1 <sup>iii</sup>	-104.9 (6)
C4—C3—N2—C2	-2.3 (13)	C2—N2—Hg1—Cl1 <sup>iii</sup>	81.3 (8)
C4—C3—N2—Hg1	-176.7 (6)	C3—N2—Hg1—Cl1 <sup>iv</sup>	75.1 (6)
C1—C2—N2—C3	0.4 (13)	C2—N2—Hg1—Cl1 <sup>iv</sup>	-98.7 (8)

Symmetry codes: (i)  $x+1, y, z$ ; (ii)  $-x+1, -y, -z$ ; (iii)  $-x+2, -y, -z$ ; (iv)  $x-1, y, z$ .

### Hydrogen-bond geometry ( $\text{\AA}, ^\circ$ )

$D-H\cdots A$	$D-H$	$H\cdots A$	$D\cdots A$	$D-H\cdots A$
N3—H3A $\cdots$ O1 <sup>v</sup>	0.86	2.01	2.864 (12)	176
N3—H3B $\cdots$ N1	0.86	2.40	2.758 (12)	105
N3—H3B $\cdots$ N1 <sup>vi</sup>	0.86	2.54	3.198 (12)	134

Symmetry codes: (v)  $-x+2, -y, -z+1$ ; (vi)  $-x+1, -y+1, -z+1$ .

Fig. 1

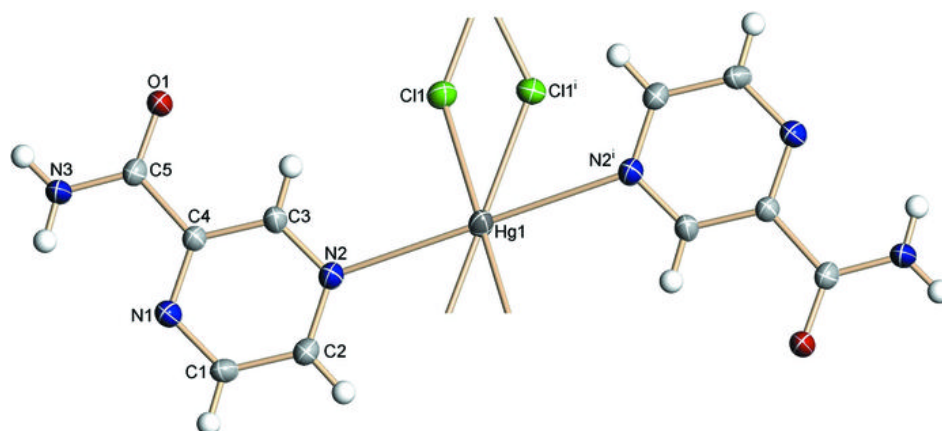


Fig. 2

