

# SCIENTIFIC REPORTS



OPEN

## Identification of absolute geometries of *cis* and *trans* molecular isomers by Coulomb Explosion Imaging

Received: 07 September 2016

Accepted: 04 November 2016

Published: 02 December 2016

Utüq Ablikim<sup>1</sup>, Cédric Bomme<sup>2</sup>, Hui Xiong<sup>3</sup>, Evgeny Savelyev<sup>2</sup>, Razib Obaid<sup>3</sup>, Balram Kaderiya<sup>1</sup>, Sven Augustin<sup>1,4</sup>, Kirsten Schnorr<sup>4,6</sup>, Ileana Dumitriu<sup>5</sup>, Timur Osipov<sup>7</sup>, René Bilodeau<sup>3,8</sup>, David Kilcoyne<sup>8</sup>, Vinod Kumarappan<sup>1</sup>, Artem Rudenko<sup>1</sup>, Nora Berrah<sup>3</sup> & Daniel Rolles<sup>1,2</sup>

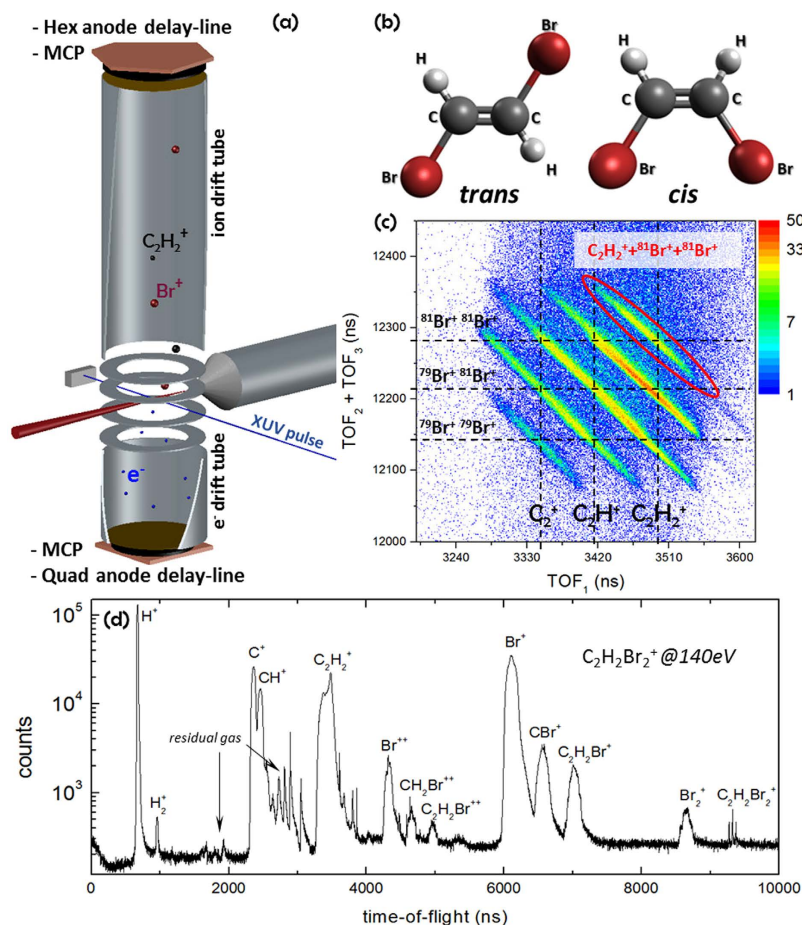
An experimental route to identify and separate geometric isomers by means of coincident Coulomb explosion imaging is presented, allowing isomer-resolved photoionization studies on isomerically mixed samples. We demonstrate the technique on *cis/trans* 1,2-dibromoethene (C<sub>2</sub>H<sub>2</sub>Br<sub>2</sub>). The momentum correlation between the bromine ions in a three-body fragmentation process induced by bromine 3*d* inner-shell photoionization is used to identify the *cis* and *trans* structures of the isomers. The experimentally determined momentum correlations and the isomer-resolved fragment-ion kinetic energies are matched closely by a classical Coulomb explosion model.

Isomers, i.e. molecules with the same chemical formula but different geometric structures, play an important role in many biological processes<sup>1–6</sup>. For example, our vision requires a protein called rhodopsin, which inter-converts between different geometric structures (i.e. isomers) during the absorption of light<sup>7</sup>. Another example is the green fluorescent protein, which is used to investigate protein trafficking inside living cells and which changes configuration from its well-ordered *cis* isomer to a highly disordered *trans* isomer<sup>8</sup> upon absorption of light in the blue to ultraviolet range.

Despite containing the same atomic constituents, isomers can have very different physical, chemical, and biological properties. Therefore, it is of particular interest to experimentally distinguish isomers in order to investigate isomer-specific reactions and, specifically, to study the interconversion between different isomers in time-resolved experiments<sup>9</sup>. A prototypical example is the isomerization between acetylene (HCCH) and vinylidene (H<sub>2</sub>CC) via hydrogen migration, which has been studied, e.g. using synchrotron radiation<sup>10</sup> and by femtosecond time-resolved experiments with intense, ultrashort optical<sup>11,12</sup> and XUV or X-ray pulses<sup>13–15</sup>. All of these experiments have employed the Coulomb explosion coincidence momentum imaging technique<sup>16–19</sup>, in which all charged fragments that are created when the multiply charged parent ion breaks up (“explodes”) are measured in coincidence and their momentum vectors are used to extract information about the dynamical change in the geometry of the parent molecule. Recently, this technique was also used to separate two enantiomers in a racemic mixture of the chiral molecules CHIClF and CHBrClF by measuring five-fold coincidences after strong-field laser ionization<sup>20,21</sup>, and the related beam-foil Coulomb explosion method was used to study the absolute configuration of *trans*-2,3-dideuteriooxirane (C<sub>2</sub>H<sub>2</sub>D<sub>2</sub>O)<sup>22</sup>.

Here, we focus on geometric isomers, which have the same bond structure but different positioning of atoms or functional groups in space. Earlier work on the Coulomb explosion of geometric isomers using intense laser pulses found different fragment ion angular distributions, but since those experiments were not performed

<sup>1</sup>J. R. Macdonald Laboratory, Physics Dept., Kansas State University, Manhattan, KS 66506, USA. <sup>2</sup>Deutsches Elektronen-Synchrotron (DESY), 22607, Hamburg, Germany. <sup>3</sup>Department of Physics, University of Connecticut, Storrs, CT 06269, USA. <sup>4</sup>Max Planck Institute for Nuclear Physics, 69117 Heidelberg, Germany. <sup>5</sup>Hobart and William Smith Colleges, Geneva, NY 14456, USA. <sup>6</sup>Department of Chemistry, University of California, Berkeley, CA 94720, USA. <sup>7</sup>SLAC National Accelerator Laboratory, Menlo Park, CA 94025, USA. <sup>8</sup>Advanced Light Source, Lawrence Berkeley National Laboratory, Berkeley, CA 94720, USA. Correspondence and requests for materials should be addressed to D.R. (email: rolles@phys.ksu.edu)



**Figure 1.** (a) Schematic of the experimental setup including a supersonic molecular beam and a double-sided VMI spectrometer with time- and position-sensitive delay line detectors. The spacing between the spectrometer electrodes is 15 mm, and the total distance between the interaction region and the detector is 398 mm for the ions and 112 mm for the electrons. (b) Molecular structure of *cis* and *trans* 1,2-dibromoethene. (c) Yield of the  $C_2H_2^+ + Br^+ + Br^+$  ( $n = 0, 1, 2$ ) coincidence channel shown in a photoion-photoion-photoion coincidence (PIPIPICO) plot as a function of the time of flight (TOF) of the first hit versus the sum of the TOFs for the second and third hits. (d) Ion time-of-flight mass spectrum of all ions generated in the X-ray induced ionization and fragmentation of 1,2-dibromoethene at 140 eV photon energy.

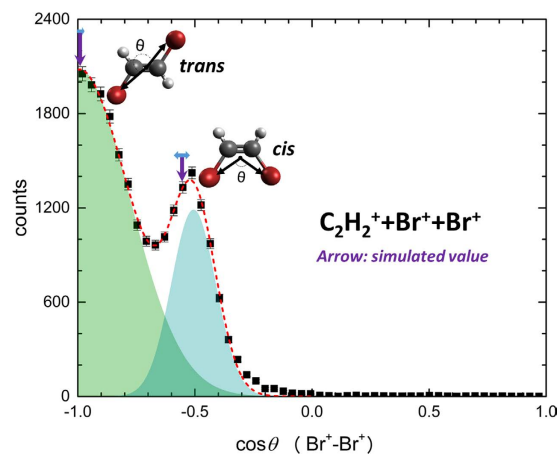
using coincidence momentum imaging, the data could not be used to identify the geometric structure of the isomers<sup>23</sup>. We present an experimental route to efficiently identify geometric isomers, namely *cis* and *trans* 1,2-dibromoethene ( $C_2H_2Br_2$ ) in a mixed sample, and demonstrate that by studying the three-body fragmentation of the molecule via Coulomb explosion, one can determine the original molecular structure. In particular, our methodology is directly applicable to time-resolved pump-probe experiments studying the *cis-trans* isomerization using either strong-field or inner-shell ionization as a probe since it allows performing an *in-situ* measurement of the isomer ratio of an isomerically mixed sample.

## Results and Discussion

The experiment was conducted at beamline 10.0.1.3 of the Advanced Light Source (ALS) at Lawrence Berkeley National Laboratory. We used a double-sided velocity map imaging (VMI) setup, where ions and electrons are measured in coincidence, as shown in Fig. 1(a).

The chemical sample used in the experiment was a mixture of *cis* and *trans* isomers of 1,2-dibromoethene. In the *cis* isomer, the two bromine atoms, each attached to one of the two carbon atoms, are pointing in the same hemisphere with respect to the C=C double bond, while they are across from each other in the *trans* isomer (see Fig. 1(b)). The double bond between the carbon atoms restricts the inter-conversion from one isomer to the other such that the two isomers are stable at room temperature.

For initiating the photoionization and fragmentation of the molecule, we chose a photon energy of 140 eV (bandwidth  $\pm 20$  meV), which is 63 eV above the binding energy of the bromine 3*d* inner-shell electrons in 1,2-dibromoethene<sup>24</sup>. Absorption of a 140-eV photon thus leads predominantly to 3*d* inner-shell ionization followed by Auger decay that typically ejects one or two additional electrons. Depending on the specific relaxation pathway, the resulting doubly or triply charged molecular cation typically breaks up into several charged and/or



**Figure 2.** Angle between the  $\text{Br}^+$  ion momenta in the triple-coincidence channel  $\text{C}_2\text{H}_2^+ + \text{Br}^+ + \text{Br}^+$ . A fit of two Gaussians (shaded areas) to the experimental data (black circles) is shown as a red dashed line. The angles expected from a classical Coulomb explosion model are indicated by arrows, with the horizontal bars indicating the broadening due to the experimental momentum resolution.

neutral fragments (see Fig. 1(d)). Here, we concentrate on the three-body fragmentation channel  $\text{C}_2\text{H}_2^+ + \text{Br}^+ + \text{Br}^+$ , for which we measure the time of flight and hit positions of all three fragments in coincidence.

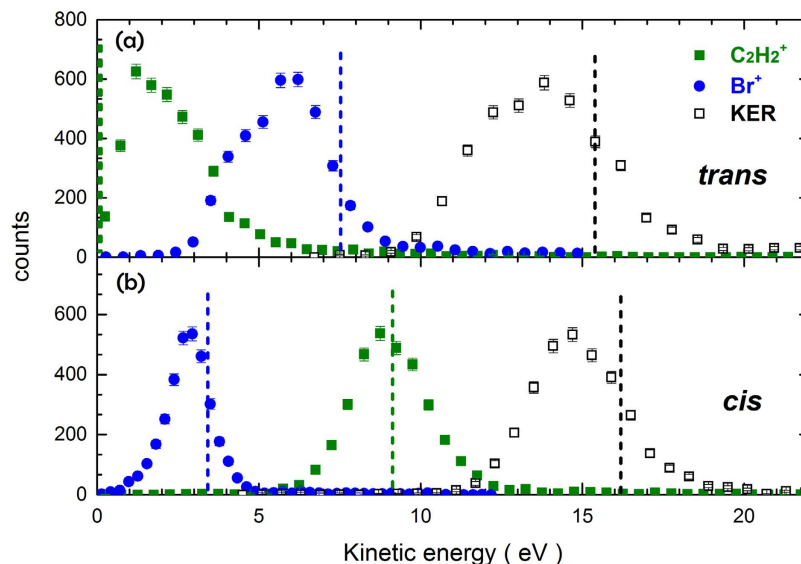
While we are not aware of an electron-electron coincidence measurements on  $\text{C}_2\text{H}_2\text{Br}_2$ , we assume that similar to the case of 3d photoionization of Kr, most of the triply charged final states are reached via sequential emission of two Auger electrons in an Auger cascade<sup>25</sup>. In Kr, the Auger lifetimes are 8 fs for the first step and 20 fs for the second step<sup>26</sup>, and we expect the lifetimes to be of the same order in  $\text{C}_2\text{H}_2\text{Br}_2$ .

In the zoomed-in triple-ion coincidence plot in Fig. 1(c), the three-body fragmentation channel  $\text{C}_2\text{H}_2^+ + \text{Br}^+ + \text{Br}^+$  appears as sharp diagonal lines due to momentum conservation during the breakup process. In this case, a total of nine diagonal lines are present corresponding to the  $\text{C}_2\text{H}_2^+ + \text{Br}^+ + \text{Br}^+$ ,  $\text{C}_2\text{H}^+ + \text{Br}^+ + \text{Br}^+$ , and  $\text{C}_2^+ + \text{Br}^+ + \text{Br}^+$  channels with different combinations of the two stable bromine isotopes,  $^{79}\text{Br}$  and  $^{81}\text{Br}$ , which have approximately equal natural abundance. Since several of these lines are overlapping, we selected only the region containing the  $\text{C}_2\text{H}_2^+ + ^{81}\text{Br}^+ + ^{81}\text{Br}^+$  channel for further analysis since this channel is clearly separated.

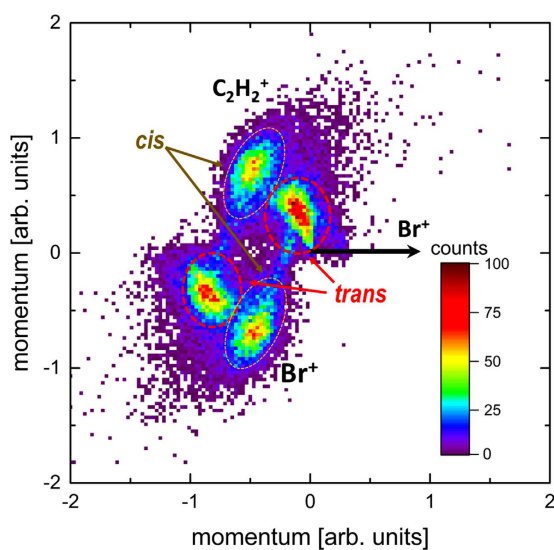
In order to reconstruct the ion momenta from the measured time of flight and hit positions of each ion, we used the SIMION software package<sup>27</sup> to construct empirical formulas connecting the hit position with the momentum vector components parallel to the detector,  $P_x$  and  $P_y$ , and the time-of-flight spread of each ion with the momentum component along spectrometer axis,  $P_z$ . Using this procedure, the momentum sum of all fragments in this triple coincidence channel was found to peak at zero, as expected due to momentum conservation, with a full width at half maximum of  $\pm 9$  au. In the following, we selected this main peak around zero in order to select only *true* coincidence events, where all fragments stem from the same parent molecule. The three-dimensional momentum vectors of all three fragments were then used to calculate the emission angle of the fragments, their kinetic energies, and the total kinetic energy release.

Figure 2 shows the angle  $\theta$  between the momentum vectors of the two  $\text{Br}^+$  fragments detected in coincidence with a  $\text{C}_2\text{H}_2^+$  fragment. This angular distribution displays two peaks which we attribute to bromine ions emitted from the *trans* ( $\cos \theta = -1$ ) and *cis* ( $\cos \theta = -0.58$ ) isomers. We corroborate this assignment by a numerical Coulomb explosion simulation, assuming purely Coulombic repulsion between point charges located at the center of mass of each fragment and instantaneous creation of the charges followed by explosion from the equilibrium geometry of the neutral molecule. By numerically solving the classical equations of motions for all the fragment ion in the Coulomb field using a 4<sup>th</sup> order Runge-Kutta method, the momentum vectors and kinetic energies of all fragments can thus be obtained for an ideal Coulomb explosion model. The simulated  $\text{Br}^+ - \text{Br}^+$  angles for Coulomb explosion of *cis* and *trans* isomers are shown as purple arrows in Fig. 2 and are in excellent agreement with the two maxima in the experimentally determined distribution. By fitting two Gaussians to the experimental data, we determine a ratio between the *trans* and *cis* isomers of  $2.04 \pm 0.07$ , which agrees with the isomeric composition of the sample determined by gas chromatography.

By selecting only those coincidence events for which the  $\text{Br}^+ - \text{Br}^+$  angles lie within the intervals of  $\cos \theta = [-0.45, -0.55]$  and  $[-0.9, -1.0]$ , respectively, we can experimentally distinguish the *cis* and *trans* isomers and extract the isomer-selected fragmentation kinematics from our data. The isomer-selected kinetic energies of the individual ions and the total kinetic energy release are shown in Fig. 3. For the *trans* isomer, the kinetic energy distribution of the  $\text{C}_2\text{H}_2^+$ -fragment has a maximum around 1 eV and that of the  $\text{Br}^+$ -fragments peaks around 6 eV, while for the *cis* isomer, the  $\text{Br}^+$ -fragments are emitted with lower and the  $\text{C}_2\text{H}_2^+$ -fragment with considerably higher kinetic energy. This can be explained by an “obstructed instantaneous explosion”<sup>28,29</sup> in the case of the *trans* isomer, where the  $\text{C}_2\text{H}_2^+$ -fragment is trapped between the two  $\text{Br}^+$ -fragments, while it obtains a much higher kinetic energy in the fragmentation of the *cis* isomer, where it is repelled by the two  $\text{Br}^+$ -fragments that are located in the same hemisphere. This simple picture is also corroborated by the results of our Coulomb explosion model calculations shown in Fig. 3, which predict values that lie very close to the maxima of the experimental



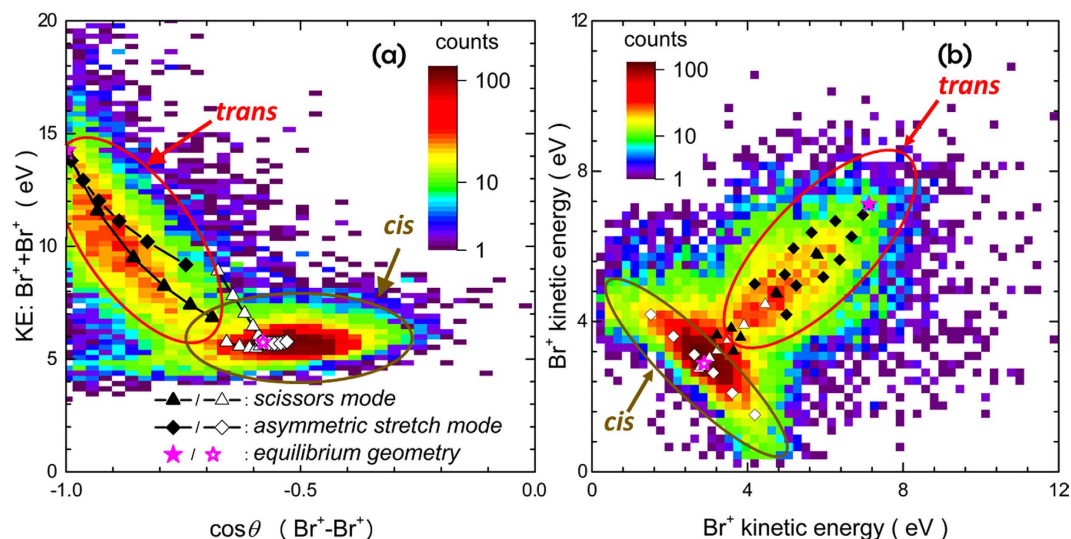
**Figure 3.** Kinetic energy distributions of the  $Br^+$  and  $C_2H_2^+$  fragments as well as total kinetic energy release in the  $C_2H_2^+ + Br^+ + Br^+$  triple-coincidence channel for (a) *trans* and (b) *cis* isomers, as selected by the  $Br^+ - Br^+$  angle  $\theta$ . The results of the Coulomb explosion model are shown as dashed lines.



**Figure 4.** Newton plot of the  $C_2H_2^+ + Br^+ + Br^+$  triple-coincidence channel. The momenta of  $C_2H_2^+$  fragments (upper half) and of one of the  $Br^+$  fragments (lower half) are shown in the frame of the momentum of the second  $Br^+$  fragment, which is shown as a black horizontal arrow. The momentum vectors of the  $C_2H_2^+$  fragment and the first  $Br^+$  fragment are normalized to the length of momentum vector of the second  $Br^+$ . The contributions corresponding to the *cis* and *trans* isomers are indicated.

kinetic energy distribution and also reproduce the difference between the KERs of the two isomers. It can also be visualized directly in a Newton plot<sup>29</sup> for this particular triple-coincidence channel shown in Fig. 4, where the momenta of two fragments ( $C_2H_2^+$  and  $Br^+$ ) are shown in the frame of the momentum of the third fragment ( $Br^+$ ). For the *trans* isomer, the Newton plot shows that the two  $Br^+$  fragments are emitted close to back to back, while the  $C_2H_2^+$  fragment remains almost at rest, as one would expect from an instantaneous fragmentation in the undistorted equilibrium geometry, where the center of mass of the  $C_2H_2$  moiety is exactly in the middle between the two Br atoms. The *cis* isomer, however, has a distinctly different fragmentation pattern with  $C_2H_2^+$  and  $Br^+$  fragments being emitted at an angle of close to 125 degree with respect to each other and carrying momenta of similar magnitude.

From the shape of the momentum distributions seen in the Newton plots as well as from the good agreement between the experimental data and the simulation, we conclude that the break-up of the molecule into this three-body channel happens mainly via concerted fragmentation in a molecular geometry that still resembles the equilibrium geometry. However, we attribute the widths of the angular distributions and the kinetic energy

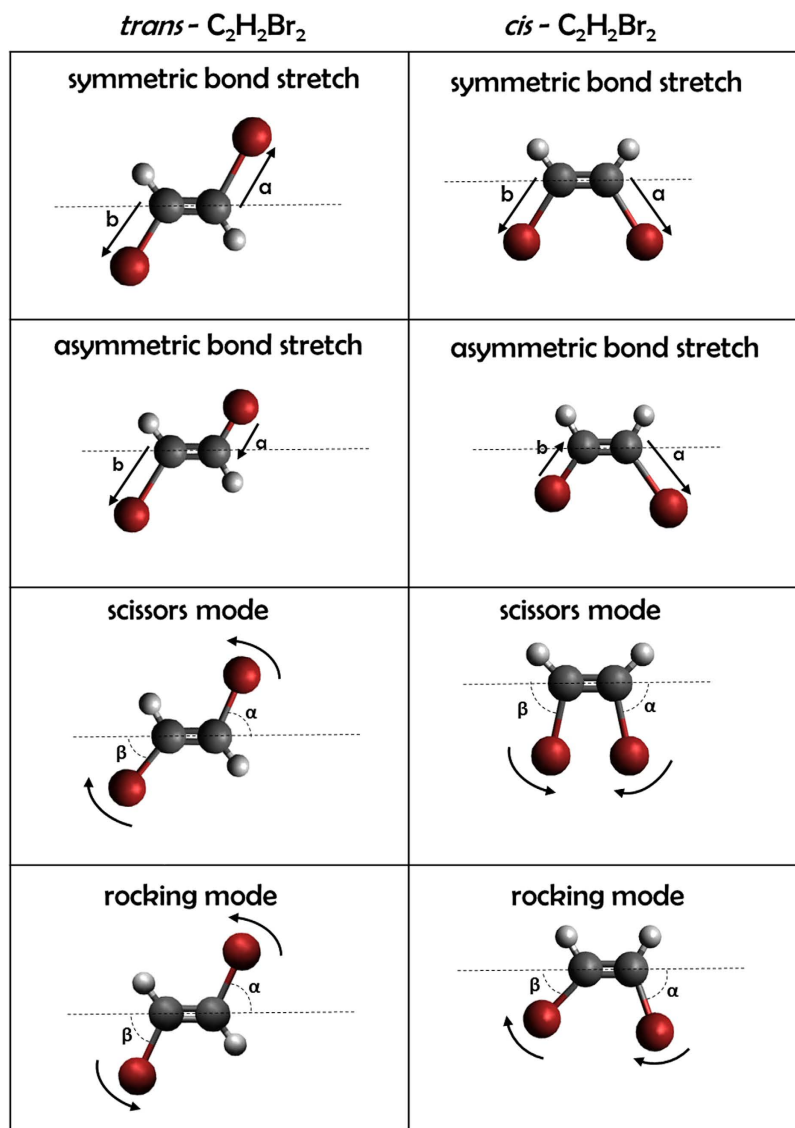


**Figure 5.** (a) Sum of the kinetic energies of the two  $\text{Br}^+$  fragments as a function of the angle  $\theta$  between them, and (b) correlation between the kinetic energies of two  $\text{Br}^+$  fragments, both for the  $\text{C}_2\text{H}_2^+ + \text{Br}^+ + \text{Br}^+$  triple-coincidence channel. The results of our Coulomb explosion simulations for various stretching and bending modes are shown as symbols, with the stars representing the results for the equilibrium geometries. The plots depict the isomerically mixed sample, but selecting one isomer via selection of the  $\text{Br}^+ - \text{Br}^+$  angle as done for Fig. 3 would select only the contributions shown in the regions marked *cis* and *trans*.

distributions beyond the experimental momentum resolution to small deviations from this equilibrium geometry due to stretching and bending motions of the molecule in either the neutral molecule (e.g. vibrations due to the temperature of the molecular beam) or in the cationic state(s) that are reached after the ionization. We can include these geometry changes empirically in our Coulomb explosion model by varying the bond lengths and angles in a systematic fashion (see Methods for a sketch of the stretching and bending modes considered here). The results are plotted and compared to the experimental data in Fig. 5. Since the calculations slightly overestimate the kinetic energies, as seen in Fig. 3, the calculated  $\text{Br}^+$  energies are shifted by  $-0.65$  eV for better comparison to the experimental data. In Fig. 5(a), the sum of the kinetic energies of the two  $\text{Br}^+$  fragments is shown as a function of the angle  $\theta$  between the  $\text{Br}^+$  fragments, while Fig. 5(b) shows the correlation between the kinetic energies of the two  $\text{Br}^+$  fragments. In the Coulomb explosion calculations, the C-Br bond distance is varied between 100% and 40% of the equilibrium bond length (in steps of 10%) for the asymmetric stretch mode, and the bond angle by  $\pm 25$  degrees (in steps of 5 degrees) around the equilibrium angle for bending in the “scissor mode”. A combination of both modes reproduces the shape of the  $\text{Br}^+ - \text{Br}^+$  kinetic energy correlation for the *trans* isomer, which is centered around the line of equal energy sharing between the two  $\text{Br}^+$  ions. According to the model calculations, the spread in the angle between the two  $\text{Br}^+$  ions for the *trans* isomer is mainly due to bending in the scissor mode, while the broadening of the  $\text{Br}^+$  kinetic energy sum and the deviations from equal energy sharing are likely due to asymmetric stretching. For the *cis* isomer, asymmetric stretching of the C-Br bonds reproduces well the almost constant sum of the  $\text{Br}^+$  kinetic energies, but it cannot fully explain the spread in the angle that reaches values up to  $\cos\theta = -0.2$  in the experimental data. This may be an indication that some channels that lead to the fragmentation of the *cis* isomer possibly involve a delayed charging of one of the Br atoms, thus resulting in deviations from the concerted fragmentation model. Further information on the pathways and intermediate ionic states that give rise to these events could be obtained, e.g., from coincident high-resolution Auger electron spectra. Some of the events that are not accounted for in the Coulomb explosion simulation might also stem from a two-step fragmentation mechanism involving intermediate states that are long-lived as compared to the rotational period of the molecule. Such a “delayed fragmentation” usually leads to a ring-like structure in the Newton plots<sup>30,31</sup>, which seems to also be present in Fig. 4. Further information about differences in the fragmentation dynamics between the two isomers or possible isomerization dynamics in the cationic state may be obtained from future time-resolved pump-probe experiments.

## Conclusions

Driven by the availability of intense, short-pulse XUV- and soft X-ray sources such as free-electron lasers and high-order harmonic sources, there is a high current interest in developing schemes to directly image molecular structure during ultrafast photochemical reactions. The coincidence Coulomb explosion imaging technique is a promising candidate in this respect, and was used already in a number of time-resolved experiments studying, e.g., the isomerization between acetylene and vinylidene<sup>11–15</sup>. Here, we have shown that this technique is also applicable to (single-photon) XUV-induced inner-shell ionization and can be used to distinguish geometric isomers and determine their isomer ratio. In particular, our results demonstrate that the Coulomb explosion of 1,2-dibromoethene into  $\text{C}_2\text{H}_2^+ + \text{Br}^+ + \text{Br}^+$  after Br(3d) inner-shell ionization can be used as a probe for the initial geometric structure of the molecule, enabling us to experimentally distinguish the *cis* and *trans* isomers and to



**Figure 6. Overview of stretching and bending modes in *trans* and *cis* C<sub>2</sub>H<sub>2</sub>Br<sub>2</sub> considered in our Coulomb explosion simulations.** The effect of bending in the “rocking mode” (i.e. both Br atoms rotating in the same direction) is not shown in Fig. 5 since it barely influences the outcome of our model calculations, while symmetric stretching of the C-Br bonds simply broaden the kinetic energy distribution at a fixed value of  $\cos\theta$ .

measure the isomer-specific ionization and fragmentation dynamics of a mixed sample. While some isomers can be easily separated due to their different physical properties, others cannot be easily prepared as pure samples, e.g. in cases where they can interconvert between different structures at room temperature. The coincidence Coulomb explosion imaging method allows studying isomer-specific properties also in the latter case. More importantly, this imaging technique provides an *in-situ* method to quantify the isomer ratio, thus opening up new possibilities for pump-probe experiments studying ultrafast isomerization reactions using optical laser, free-electron lasers, or high-harmonic generation sources.

## Methods

**Experimental Details.** In order to measure ions and electrons in coincidence, we used a double-sided velocity map imaging (VMI) setup, as shown above in Fig. 1(a). The detection scheme is different from a conventional VMI system<sup>32</sup> in the sense that microchannel plate detectors equipped with multi-hit delay-line anodes (RoentDek DLD80 for the electrons and RoentDek HEX80 for the ions) are used to record both position and time information for the charged fragments<sup>33–35</sup>. In addition, the spectrometer consists of *four* electrostatic lenses that simultaneously focus *both* electrons and ions onto the two detectors at opposite sides of the spectrometer. The lens voltages chosen in this experiment enabled the collection of electrons up to 150 eV and singly charged ions up to 15 eV, over the full solid angle.

The experiments were performed at beamline 10.0.1.3 of the Advanced Light Source (ALS) at Lawrence Berkeley National Laboratory during the standard ALS multi-bunch top-off mode of operation. The data

acquisition system, consisting of two multi-hit time-to-digital (TDC) converters, was triggered by the detection of an electron, which arrived at the detector after a flight time of approximately 5 nanoseconds. The time of flight of the ions was then measured with respect to the arrival time of the prompt electrons. The position and time-of-flight information of the ions are used to reconstruct their full three-dimensional momentum vectors. Since the electric field in the spectrometer is not homogeneous, we cannot derive analytical formulas for this reconstruction but use the SIMION software package<sup>27</sup> to simulate the expected time of flight and hit positions for ions starting in the interaction region with different kinetic energies and emission angles. We then fit a polynomial to the simulated data to construct empirical formulas connecting the hit position with the momentum vector components parallel to the detector,  $P_x$  and  $P_y$ , and the time-of-flight spread of each ion with the momentum component along spectrometer axis,  $P_z$ .

The chemical sample used in the experiment was commercially purchased (Sigma Aldrich, 98.3% purity) and contained a mixture of *cis* and *trans* isomers at a mixing ratio of 32.1% (*cis*) to 66.2% (*trans*), according to a gas chromatography analysis by the vendor. The sample is liquid at room temperature and was brought into the gas phase via supersonic expansion through a 30 micron aperture. The vapor pressure of  $C_2H_2Br_2$  is 31 mmHg at 25 °C<sup>36</sup>, which was sufficient to form a molecular beam without additional carrier gas. After passing through a skimmer with a 500 micron diameter, the molecular beam is crossed by a beam of linearly polarized ALS photons in the interaction center of the VMI spectrometer.

**Coulomb explosion calculations.** For the Coulomb explosion calculations discussed above, we have used the equilibrium geometry of the neutral *trans* and *cis* dibromoethene ( $C_2H_2Br_2$ ) molecule as determined by the Gaussian software package<sup>37</sup>. However, it is known that the molecule may undergo geometry changes, e.g. due to vibrations in the neutral or cationic states or due to a geometric rearrangement, such as the beginning of an isomerization, that may occur during the photoionization process *prior* to the Coulomb break-up. In order to model the effect of these deviations from the equilibrium geometry in our Coulomb explosion simulations, we have broken down the large number of vibrational modes and other possible geometry changes into a few basic stretching and bending motions, as shown in Fig. 6, that we can systematically include in our calculations. We have limited our selection to two stretching and two bending modes involving the C-Br bonds that we considered to be the most likely and most relevant for our case, but note that this is only a subset of all possible modes that can be considered. Within our classical calculations, we cannot distinguish if the geometric changes occur in the neutral or cationic state and we cannot determine the cause of these changes, but this information may be derived from more detailed calculations of the electronic structure and dynamics or from future time-resolved experiments.

## References

- Genick, U. K., Soltis, S. M., Kuhn, P., Canestrelli, I. L. & Getzoff, E. D. *Nature* **392**, 206–209 (1998).
- Ko, C. *et al.* Ab initio excited-state dynamics of the photoactive yellow protein chromophore. *J. Am. Chem. Soc.* **125**, 12710–12711 (2003).
- Abshiru, N. *et al.* Discovery of protein acetylation patterns by deconvolution of peptide isomer mass spectra. *Nat. Commun* **6**, 8648 (2015).
- Hubbard, R. & Wald, G. *Cis* and *trans* isomers of vitamin A and retinene in vision. *Science* **115**, 60–63 (1952).
- Ball, D. W., Hill, J. W. & Scott, R. J. *The Basics of General Organic and Biological Chemistry* (Flat World Education, 2011).
- Desfrancois, C., Abdoul-Carime, H., Schulz, C. P. & Schermann, J. P. Laser separation of geometrical isomers of weakly bound molecular complexes. *Science* **269**, 1707–1709 (1995).
- Schoenlein, R. W., Peteanu, L. A., Mathies, R. A. & Shank, C. V. The first step in vision: femtosecond isomerization of rhodopsin. *Science* **254**, 412–415 (1991).
- Henderson, J. N., Ai, H.-W., Campbell, R. E. & Remington, S. J. Structural basis for reversible photobleaching of a green fluorescent protein homologue. *Proc. Natl. Acad. Sci. USA* **104**, 6672–6677 (2007).
- Pande, K. *et al.* Femtosecond structural dynamics drives the *trans/cis* isomerization in photoactive yellow protein. *Science* **352**, 725–729 (2016).
- Osipov, T. *et al.* Photoelectron-photoion momentum spectroscopy as a clock for chemical rearrangements: Isomerization of the dication of acetylene to the vinylidene configuration. *Phys. Rev. Lett.* **90**, 233002 (2003).
- Hishikawa, A., Matsuda, A., Fushitani, M. & Takahashi, E. J. Visualizing recurrently migrating hydrogen in acetylene dication by intense ultrashort laser pulses. *Phys. Rev. Lett.* **99**, 258302 (2007).
- Ibrahim, H. *et al.* Tabletop imaging of structural evolutions in chemical reactions demonstrated for the acetylene cation. *Nat. Commun* **5**, 4422 (2014).
- Jiang, Y. H. *et al.* Ultrafast extreme ultraviolet induced isomerization of acetylene cations. *Phys. Rev. Lett.* **105**, 263002 (2010).
- Jiang, Y. H. *et al.* Ultrafast dynamics in acetylene clocked in a femtosecond xuv stopwatch. *J. Phys. B: At. Mol. Opt. Phys.* **46**, 164027 (2013).
- Liekhus-Schmaltz, C. E. *et al.* Ultrafast isomerization initiated by X-ray core ionization. *Nat. Commun* **6**, 8199 (2015).
- Vager, Z., Naaman, R. & Kanter, E. P. Coulomb explosion imaging of small molecules. *Science* **244**, 426–431 (1989).
- Vager, Z., Zajfman, D., Graber, T. & Kanter, E. P. Experimental evidence for anomalous nuclear delocalization in  $C_2H_3^+$ . *Phys. Rev. Lett.* **71**, 4319 (1993).
- Muramatsu, Y. *et al.* Direct probe of the bent and linear geometries of the core-excited renner-teller pair states by means of the triple-ion-coincidence momentum imaging technique. *Phys. Rev. Lett.* **88**, 133002 (2002).
- Ueda, K. *et al.* Nuclear motion and symmetry breaking of the b<sub>1s</sub>-excited  $BF_3$  molecule. *Chemical Physics* **289**, 135–147 (2003).
- Pitzer, M. *et al.* Direct determination of absolute molecular stereochemistry in gas phase by coulomb explosion imaging. *Science* **341**, 1096–1100 (2013).
- Pitzer, M. *et al.* Absolute configuration from different multifragmentation pathways in light-induced coulomb explosion imaging. *ChemPhysChem* **17**, 2465–2472 (2016).
- Herwig, P. *et al.* Imaging the absolute configuration of a chiral epoxide in the gas phase. *Science* **342**, 1084–1086 (2013).
- Yatsushashi, T., Nakashima, N. & Azuma, J. Coulomb explosion of dichloroethene geometric isomers at 1 PW  $cm^{-2}$ . *J. Phys. Chem. A* **117**, 1393–1399 (2013).
- Wannberg, B., Svensson, S., Keane, M., Karlsson, L. & Baltzer, P. Isotope effects in the Auger electron spectra of hbr and dbr. *Chemical Physics* **133**, 281–289 (1989).

25. Viehhaus, J. *et al.* Auger cascades versus direct double Auger: relaxation processes following photoionization of the Kr 3d and Xe 4d, 3d inner shells. *J. Phys. B At. Mol. Opt. Phys.* **38**, 3885–3903 (2005).
26. Uphues, T. *et al.* Ion-charge-state chronoscopy of cascaded atomic Auger decay. *New J. Phys.* **10**, 025009 (2008).
27. SIMION, version 8.1, The field and particle trajectory simulator, Scientific Instrument Services, Inc (2013). URL <http://simion.com/>. (Date of access: 29/04/2015).
28. Eland, J. The dynamics of three-body dissociations of dications studied by the triple coincidence technique PEPIPICO. *Mol. Phys.* **61**, 725–745 (1987).
29. Hsieh, S. & Eland, J. H. D. Reaction dynamics of three-body dissociations in triatomic molecules from single-photon double ionization studied by a time- and position-sensitive coincidence method. *J. Phys. B At. Mol. Opt. Phys.* **30**, 4515–4534 (1997).
30. Neumann, N. *et al.* Fragmentation dynamics of CO<sub>2</sub><sup>3+</sup> investigated by multiple electron capture in collisions with slow highly charged ions. *Phys. Rev. Lett* **104**, 103201 (2010).
31. Wu, C. *et al.* Nonsequential and sequential fragmentation of CO<sub>2</sub><sup>3+</sup> in intense laser fields. *Phys. Rev. Lett* **110**, 103601 (2013).
32. Eppink, A. T. J. B. & Parker, D. H. Velocity map imaging of ions and electrons using electrostatic lenses: Application in photoelectron and photofragment ion imaging of molecular oxygen. *Review of Scientific Instruments* **68**, 3477–3484 (1997).
33. Pešić, Z. D., Rolles, D., Dumitriu, I. & Berrah, N. Fragmentation dynamics of gas-phase furan following K-shell ionization. *Phys. Rev. A - At. Mol. Opt. Phys.* **82**, 013401 (2010).
34. Rolles, D. *et al.* A velocity map imaging spectrometer for electron-ion and ion-ion coincidence experiments with synchrotron radiation. *Nucl. Instruments Methods Phys. Res. Sect. B Beam Interact. with Mater. Atoms* **261**, 170–174 (2007).
35. Vredenburg, A., Roeterdink, W. G. & Janssen, M. H. M. A photoelectron-photoion coincidence imaging apparatus for femtosecond time-resolved molecular dynamics with electron time-of-flight resolution of  $\sigma = 18$  ps and energy resolution  $\Delta E/E = 3.5\%$ . *Rev. Sci. Instrum.* **79**, 063108 (2008).
36. Renon, H. Computer aided data book of vapor pressure. *Fluid Phase Equilib.* **2**, 161 (1978).
37. Frisch, M. J. *et al.* Gaussian 09, Revision A.02. Gaussian Inc. Wallingford, CT (2009).

## Acknowledgements

This work is supported by the Chemical Sciences, Geosciences, and Biosciences Division, Office of Basic Energy Sciences, Office of Science, U.S. Department of Energy, Grant No. DE-FG02-86ER13491 (Kansas group) and DE-SC0012376 (U Conn group). D.R. also acknowledges support through the Helmholtz Young Investigator program for the DESY group. We thank the staff of the Advanced Light Source for their help and support before and during the experiment, in particular Doug Taube for his help acquiring and handling the samples. We also acknowledge Achim Czasch for his help configuring the CoboldPC data acquisition software.

## Author Contributions

D.R. conceived and coordinated the experiment, which was carried out by U.A., C.B., H.X., E.S., R.O., B.K., T.O. S.A., K.S., I.D., R.B., D.K., V.K. and D.R. U.A. analyzed the data and performed the Coulomb explosion calculations with guidance from D.R. U.A., A.R., N.B., and D.R. interpreted the results with input from all authors. U.A., A.R. and D.R. wrote the manuscript consulting with all authors.

## Additional Information

**Competing financial interests:** The authors declare no competing financial interests.

**How to cite this article:** Ablikim, U. *et al.* Identification of absolute geometries of *cis* and *trans* molecular isomers by Coulomb Explosion Imaging. *Sci. Rep.* **6**, 38202; doi: 10.1038/srep38202 (2016).

**Publisher's note:** Springer Nature remains neutral with regard to jurisdictional claims in published maps and institutional affiliations.



This work is licensed under a Creative Commons Attribution 4.0 International License. The images or other third party material in this article are included in the article's Creative Commons license, unless indicated otherwise in the credit line; if the material is not included under the Creative Commons license, users will need to obtain permission from the license holder to reproduce the material. To view a copy of this license, visit <http://creativecommons.org/licenses/by/4.0/>

© The Author(s) 2016