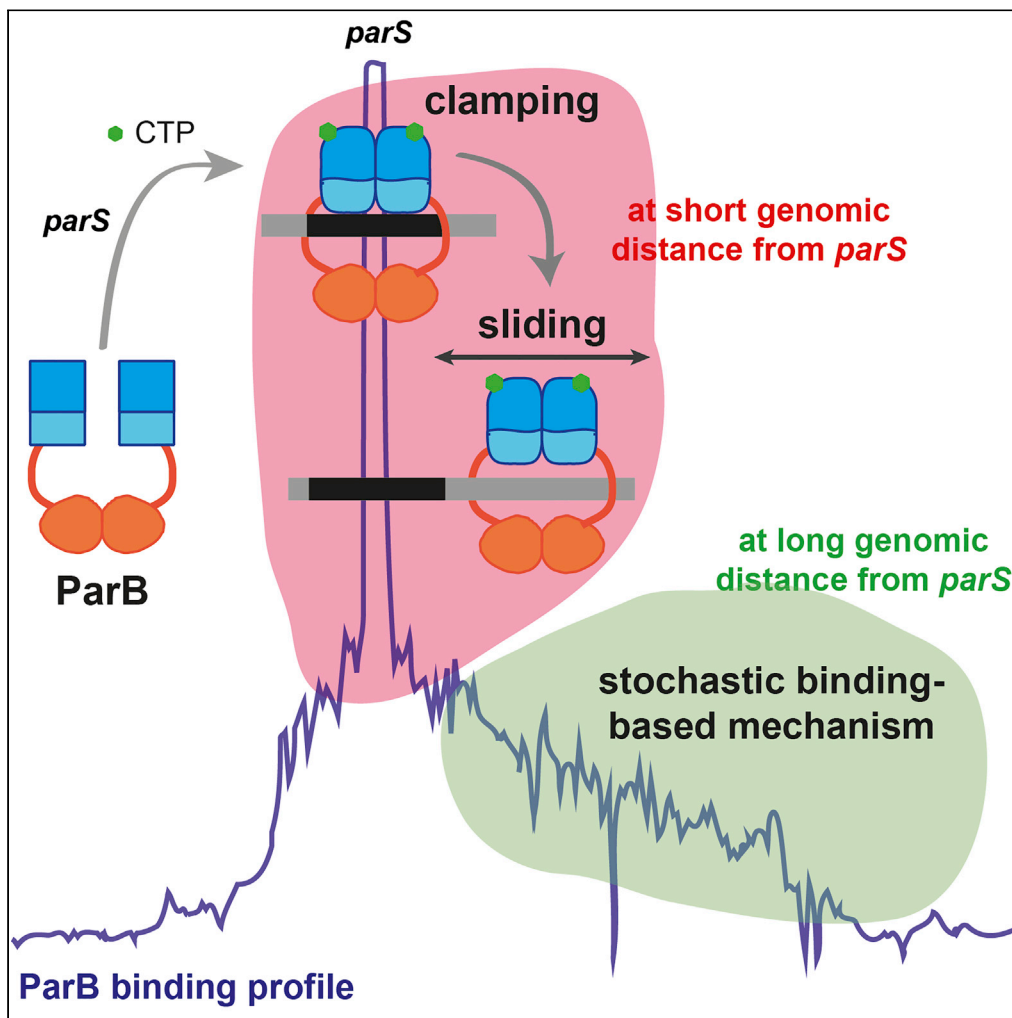


Article

Physical Modeling of a Sliding Clamp Mechanism for the Spreading of ParB at Short Genomic Distance from Bacterial Centromere Sites



Jean-Charles Walter, Jérôme Rech, Nils-Ole Walliser, ..., John Palmeri, Andrea Parmeggiani, Jean-Yves Bouet

jean-charles.walter@umontpellier.fr (J.-C.W.)
jean-yves.bouet@univ-tlse3.fr (J.-Y.B.)

HIGHLIGHTS

A physical model for ParB clamping and sliding on *parS*-proximal DNA is proposed

Clamped ParB sliding does not account for ParB binding at a large distance from *parS*

Two distinct mechanisms must be at play for partition complex assembly

Article

Physical Modeling of a Sliding Clamp Mechanism for the Spreading of ParB at Short Genomic Distance from Bacterial Centromere Sites

Jean-Charles Walter,^{1,*} Jérôme Rech,² Nils-Ole Walliser,¹ Jérôme Dorignac,¹ Frédéric Geniet,¹ John Palmeri,¹ Andrea Parmeggiani,^{1,3} and Jean-Yves Bouet^{2,4,*}

SUMMARY

Bacterial ParB partitioning proteins involved in chromosomes and low-copy-number plasmid segregation are cytosine triphosphate (CTP)-dependent molecular switches. CTP-binding converts ParB dimers to DNA clamps, allowing unidimensional diffusion along the DNA. This sliding property has been proposed to explain the ParB spreading over large distances from *parS* centromere sites where ParB is specifically loaded. We modeled such a “clamping and sliding” mechanism as a typical reaction-diffusion system, compared it to the F plasmid ParB DNA binding pattern, and found that it can account neither for the long range of ParB binding to DNA nor for the rapid assembly kinetics observed *in vivo* after *parS* duplication. Also, it predicts a strong effect on the F plasmid ParB binding pattern from the presence of a roadblock that is not observed in ChIP-seq. We conclude that although “clamping and sliding” can occur at short distances from *parS*, another mechanism must apply for ParB recruitment at larger genomic distances.

INTRODUCTION

Faithful segregation of the full set of genetic information is essential for all living cells. In bacteria, segregation follows DNA replication and involves the separation and transportation of the new copies in opposite directions along the longitudinal cell axis (Bouet et al., 2014). Partition of chromosomes and low-copy-number plasmids mainly relies on ParABS systems (for reviews; Bouet and Funnell, 2019; Jalal and Le, 2020). They encode a Walker-type ATPase (ParA) and a site-specific DNA binding protein (ParB), which binds to *parS* centromere sites. ParA action separates the ParB assemblies nucleated on *parS* sites, which are always located near the origin of replication, and actively relocates them toward opposite cell poles. This process ensures that every daughter cell receives at least one copy of the replicated DNA molecules.

Recent studies on the bacterial partition protein ParBs have revealed a new activity, namely cytosine triphosphate (CTP) binding (Jalal et al., 2020; Osorio-Valeriano et al., 2019; Soh et al., 2019). ParB proteins thus now emerge as a new class of CTP-dependent molecular switches. ParB dimers bind specifically to a few short *parS* DNA sites, usually 16-bp, which subsequently nucleate the assembly of hundreds of ParB in their spatial vicinity. This leads to the formation of highly concentrated but dynamic nucleoprotein complexes of small size (~40 nm; Guilhas et al., 2020), with ParB binding to non-specific DNA over large genomic distances (>10-Kb; e.g. Breier and Grossman, 2007; Debaugny et al., 2018; Lagage et al., 2016; Rodionov et al., 1999; Sanchez et al., 2015), and visible as bright foci in fluorescent microscopy (Breier and Grossman, 2007; Diaz et al., 2015; Erdmann et al., 1999; Lagage et al., 2016; Lim et al., 2014). Biochemical studies in the presence of CTP and the resolution of a ParB-CDP co-crystal structure suggested that a sliding clamp mechanism controlled by CTP binding could be the basis for this clustering of numerous ParBs around the *parS* sequence (Jalal et al., 2020; Soh et al., 2019).

The ParB-DNA nucleoprotein complex is involved in the intracellular positioning of the *parS* centromere sequences and their segregation toward opposite poles of the cell through its interaction with the cognate ParA ATPase (for reviews; Bouet and Funnell, 2019; Jalal and Le, 2020). CTP binding and hydrolysis control ParB activities (Jalal et al., 2020; Osorio-Valeriano et al., 2019; Soh et al., 2019). Apo-ParB dimers adopt an

¹Laboratoire Charles Coulomb (L2C), Univ. Montpellier, CNRS, 34095 Montpellier, France

²Laboratoire de Microbiologie et de Génétique Moléculaires (LMGM), CBI, CNRS, Univ. Toulouse, UPS, 31062 Toulouse, France

³Laboratory of Parasite Host Interactions (LPHI), Univ. Montpellier, CNRS, 34095 Montpellier, France

⁴Lead Contact

*Correspondence: jean-charles.walter@umontpellier.fr (J.-C.W.), jean-yves.bouet@univ-tlse3.fr (J.-Y.B.)

<https://doi.org/10.1016/j.isci.2020.101861>



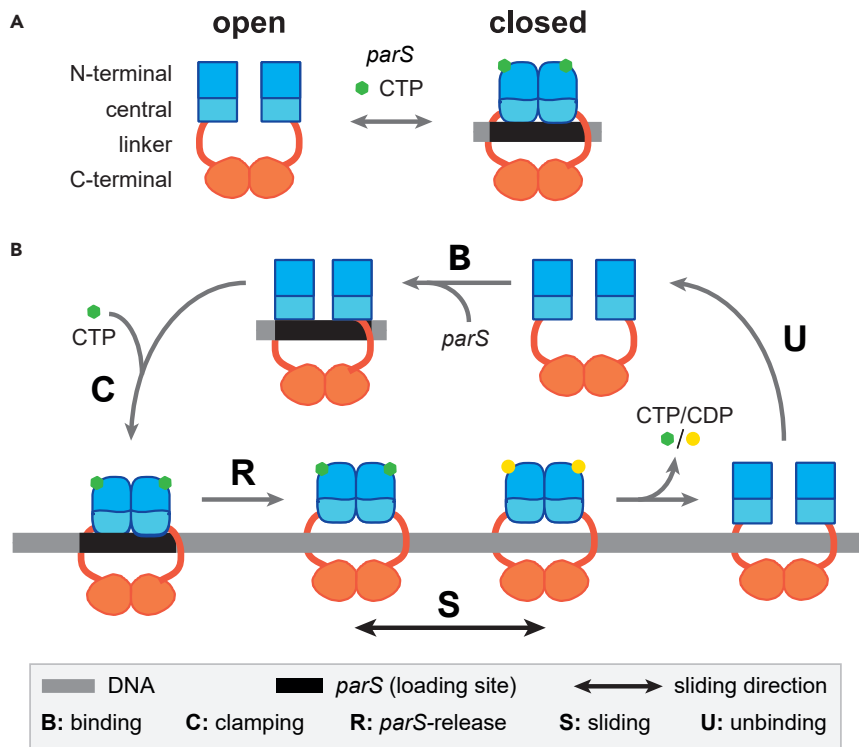


Figure 1. Schematic Cycle for ParB Clamping and Sliding By Diffusion Along DNA

(A) Open and closed conformations mediated by CTP and *parS* DNA. ParB is a homodimer composed of a C-terminal dimerization domain (orange) linked to the central (light blue) and N-terminal (dark blue) domains by a flexible linker (red). The central domain contains the two DNA binding motifs for *parS* binding (Sanchez et al., 2013). The N-terminal part contains the ParA interaction domain, the arginine-like motif, the CTP binding motif, and the multimerization domain (Ah-Seng et al., 2009; Soh et al., 2019; Surtees and Funnell, 1999). In the presence of *parS* and CTP, ParB dimer forms a clamp around the DNA.

(B) Schematic representation for the “clamping and sliding” model displaying the five key steps. The open conformation of ParB dimer enables DNA binding. Upon specific binding to *parS* centromere (step B), ParB undergoes a conformational change promoting CTP binding which subsequently induces ParB to form a clamp around *parS* (step C). Clamping promotes its release from *parS* allowing the ParB clamp to slide away from *parS* by diffusion (step S) and to free the *parS* loading site for the next round of loading. The parameters used in the physical modeling B, R, D, and U correspond to the *parS* binding (B), ParB clamping (C) and release (R), free diffusion during sliding (S), and DNA unbinding (U) steps, respectively. Note that (i) R is the total release rate from *parS* which is, to a first approximation, equal on both sides of *parS* (not represented on the schematic representation for simplicity); therefore, ParB clamps are loaded on each side at a rate R/2, and (ii) the stage at which CTP hydrolysis occurs was not determined in the original clamping models (Jalal et al., 2020; Soh et al., 2019).

open conformation and bind to DNA (Figure 1A). Specific binding to *parS* activates CTP binding which induces a conformational change that converts ParB dimers into a closed conformation (gate closure) entrapping double strand DNA. The clamped ParB favors *parS* unbinding as suggested by (i) the steric clash for *parS* binding modeled in the CDP-bound ParB crystal structure (Soh et al., 2019) and (ii) the ParB release from *parS* in the presence of CTP (Jalal et al., 2020). Upon release from *parS* sites, clamped ParB dimers would thus remain trapped along the DNA on either side of *parS* until the gate opens to release ParB from the DNA (Figure 1B). Soh et al. (2019) thus proposed that a ParB sliding clamp mechanism, restricting ParB around *parS* sites, might give rise to the characteristic ParB DNA binding distribution observed by ChIP assays (e.g. Breier and Grossman, 2007; Rodionov et al., 1999; Sanchez et al., 2015). Importantly, CTP binding and hydrolysis by ParB proteins was demonstrated for plasmid-encoded and chromosomally encoded ParABS systems (Soh et al., 2019).

ParB was found to cluster around *parS* based (i) on gene silencing in the vicinity of *parS* (Lynch and Wang, 1995; Rodionov et al., 1999), (ii) on ParB binding over more than 10-Kb on both sides of *parS* (Murray et al.,

2006; Rodionov et al., 1999; Sanchez et al., 2015), and (iii) on the lower accessibility of proteins around *parS* DNA (Bouet and Lane, 2009; Lynch and Wang, 1995). However, the quantity of ParB dimers present in the cell is insufficient to continuously cover the observed spreading zone. Several groups have carried out physical modeling studies (Broedersz et al., 2014; Debaugny et al., 2018; Sanchez et al., 2015; Walter et al., 2018, 2020) to investigate the mechanisms that could account for the assembly of ParB (reviewed in Funnell, 2016; Jalal and Le, 2020). By testing the “1D-spreading”, “spreading and bridging” in the strong coupling limit, “looping and clustering”, and “nucleation and caging” models on high-resolution ChIP-sequencing (ChIP-seq) data, only the latter model based on low affinity but synergistic interactions actually fits best observations (Debaugny et al., 2018). However, all these models were proposed before the finding that ParB can clamp and diffuse unidimensionally along the DNA.

Here, we developed a physical modeling approach based on the newly proposed sliding mechanism, namely “clamping and sliding”, involving the loading of ParB at *parS* sites with subsequent free diffusion as a protein clamp along the DNA track, followed by its unbinding upon clamp opening (Figure 1B). We then compared this novel physical model with the ParB DNA binding pattern from high-resolution ChIP-sequencing data reported for the ParABS system of the F plasmid. Using recent estimations of the release and unbinding parameters (Jalal et al., 2020) and of the diffusion coefficient (Guilhas et al., 2020), we showed on the basis of a physical analysis with biological parameters of incoming and outgoing flux of ParB on DNA that “clamping and sliding” is not able to account for the number of particles found *in vivo* on the F plasmid, especially at large distances from *parS*. Importantly, one-dimensional translocation is expected to be interrupted by obstacles on DNA. The modeling of the effect of a roadblock failed to describe the ChIP-seq pattern obtained in the presence of a natural roadblock. Moreover, imaging ParB clusters using epifluorescence microscopy at high temporal resolution indicated a rapid recovery of ParB fluorescence intensity at the onset of DNA replication in contrast to the model prediction. These results suggest that the “clamping and sliding” model can only partly account for the assembly mechanism. We thus propose that a “clamping and sliding” mechanism might explain the ParB spreading pattern only at short distances from *parS* but that another mechanism must apply for ParB binding at long distances.

RESULTS

The “Clamping and Sliding” Model

The DNA is modeled as a circular filament of length L displaying N discrete sites of 16-bp (footprint of a ParB dimer; Bouet and Lane, 2009). ParB dimers (i) bind specifically to *parS*, (ii) switch conformation and bind CTP, (iii) convert to protein clamps, (iv) release *parS*, (v) freely diffuse on DNA, and (vi) unbind DNA by opening the clamp (Figure 1B). Therefore, ParB can only enter the filament by a unique loading gate, *parS*, at the binding rate B (Figure 1B). It is released from *parS* at the rate R , and it can diffuse unidimensionally on the DNA, with a diffusion coefficient D , but cannot cross *parS*, which is always assumed to be occupied by ParB. Lastly, ParB clamps exit anywhere from the circular DNA filament by opening the clamp at the unbinding rate U . We thus modeled the “clamping and sliding” mechanism by a typical reaction-diffusion model. Notably, in contrast to all other models at thermodynamic equilibrium previously proposed (see above), this steady-state sliding mechanism is out of equilibrium. Indeed, the binding and subsequent release of ParB at *parS* only creates an oriented gradient of proteins leading to a stationary, oriented flux of ParBs. Thus, the system is brought out of equilibrium due to these particular boundary conditions. Note that in the framework of the “clamping and sliding” model, ParB non-specific DNA binding activity is not relevant due to the high concentration of competitor DNA represented by the nucleoid.

In the cells, ParB dimers can be found in two states: (i) assembled in clusters around *parS*, which represents over 90% of ParB present in the cell and (ii) freely diffusing over the nucleoid corresponding to the remaining ParB population, which acts as a reservoir for the clusters (Guilhas et al., 2020; Sanchez et al., 2015). These two populations may represent the sliding clamps and the free ParBs, respectively. Therefore, in the stationary regime, the flux balance of ParB in the partition complex is $J_{in} = J_{out}$, with the current of incoming particles $J_{in} = R$ and outgoing particles $J_{out} = N_a U$, where N_a is the number of particles clamped to DNA. This leads to the conservation of the average number N_a of clamped ParB, imposed by the two rates, R and U :

$$N_a = R/U. \quad (\text{Equation 1})$$

The time-dependent density $\rho(x, t)$ of ParB can be described by the following equation:

$$\frac{\partial \rho(x, t)}{\partial t} = D \Delta \rho(x, t) + R \delta(x) - \rho(x, t) U. \quad (\text{Equation 2})$$

The stationary solution for a coarse grained number density, $n(x) = \rho(x) \delta x$, is readily obtained from the steady-state solution of Equation (2) as follows:

$$n(x) = \zeta e^{-x/\mu} \delta x \quad (\text{Equation 3})$$

where $\delta x = 16$ -bp corresponds to one footprint of ParB, $\mu = \sqrt{D/U}$ is the characteristic length scale (in bp) of the decay corresponding to the typical distance performed by ParB by diffusion before detachment, and $\zeta \delta x = R/(2\sqrt{DU}) \delta x$ is the overall amplitude of the density decay, which linearly increases with the release rate R . In the next section, we applied this formalism using biologically determined parameter values.

Simulation of the “Clamping and Sliding” Model Using Biological Parameters for ParB

Our physical modeling for the “clamping and sliding” mechanism contains four kinetic parameters (see Figure 1B). We estimated these parameters as follows: (i) We considered that *parS* is always occupied by a ParB dimer. Indeed, the ParB binding to *parS* depends on the population of ParB that is free to diffuse over the nucleoid. The freely diffusing ParB concentration was estimated at $\sim 0.14 \mu\text{M}$ and $\sim 0.48 \mu\text{M}$ for ParB from plasmid F (ParB_F) and from the chromosome of *C. crescentus* (ParB_{C_{cre}}) (see Table S1; Bouet et al., 2005; Lim et al., 2014), well above the K_D for ParB_F-*parS_F* interaction ($\sim 2 \text{ nM}$; Ah-Seng et al., 2009) and chromosomal ParB-*parS* (~ 20 -50 nM; Fisher et al., 2017). In addition, the ParB_F binding rate, B_F , with an apparent association constant $K_{on} \sim 2 \times 10^5 \text{ mol}^{-1} \text{ s}^{-1}$ (Ah-Seng et al., 2009) is several orders of magnitude higher than the other rates used in the model (see below). The ParB-*parS* binding step is therefore not limiting: (ii) the apparent diffusion coefficient of ParB_F clustered around *parS_F*, $D_F \sim 0.05 \mu\text{m}^2 \text{ s}^{-1}$ (or $\sim 4.3 \times 10^5 \text{ bp}^2 \text{ s}^{-1}$) as measured by super-resolution microscopy (Guilhas et al., 2020); (iii) the release of ParB from *parS*, $R_{C_{cre}} \sim 0.1 \text{ s}^{-1}$ (Figures S1A and S1B); and (iv) the unbinding of the ParB clamp from non-specific DNA $U_{C_{cre}} \sim 0.017 \text{ s}^{-1}$ (Figures S1A and S1C). These two latter parameters were obtained from the *in vitro* biochemical experiments, performed with ParB_{C_{cre}} in the presence of CTP (Figure 2A in Jalal et al., 2020), by calculating the kinetic rates using nonlinear regression fits (see Figure S1 and Transparent Methods). Equation (2) contains only the three kinetic parameters D , R , and U . We accounted for the assumption that the *parS* site is always occupied by a ParB with a constant source term, *i.e.*, a delta-function $\delta(x)$.

We introduced these parameter values in our physical model to estimate the number of attached particles, and we obtained, from Equation (1), an average number of clamped ParB dimers per DNA molecule $N_a = R/U \sim 6$. This value is much lower than the $N_a \sim 250$ or ~ 200 (see Table S1) observed experimentally for ParB_F and ParB_{C_{cre}}, respectively (Adachi et al., 2006; Bouet et al., 2005; Lim et al., 2014), indicating that the biological values for R and/or U cannot account for the number of ParB per cluster. Despite this discrepancy, we further plotted, in Figure 2A, the theoretical prediction for the profile given by Equation (3) and, as a benchmark, the corresponding Monte Carlo simulations. These simulations consist of a discrete version of the “clamping and sliding” model applied on a DNA molecule of length $L = 60$ -Kb, which corresponds to the actual size of the F plasmid used for the ChIP-sequencing data (see Transparent Methods), giving $N = 3750$ non-overlapping ParB sites. From Equation (3), the exponential decay has a characteristic length $\mu \sim 5.1$ -Kb and an amplitude $\zeta \sim 6 \times 10^{-4} \text{ bp}^{-1}$, leading to the coarse-grained amplitude $\zeta \delta x \sim 10^{-2}$. As shown in Figure 2A, analytic and numerical predictions are both in excellent agreement with each other but result in a very low density profile around *parS*, unable by far to describe the ChIP-seq profile (red symbols). N_a , the total number of ParB on DNA, corresponds to the integral of $n(x)$. Thus, a low value of $N_a \sim 6$ implies directly a low value of the overall amplitude of $n(x)$ with the biological parameters from Figure S1 compared to the ChIP-seq data. Also, the slopes of the decay are different: the ChIP-seq profile displays a slower decay, suggesting a larger characteristic length μ (discussed in the next paragraph). Since the parameters arise from *in vitro* assays performed on a small and constrained DNA molecule (Jalal et al., 2020), the value of $U_{C_{cre}}$ may be overestimated compared to *in vivo* conditions (see Discussion).

Another approach is to fit directly the U and R parameters, the DNA unbinding, and *parS* release rates, respectively, from the *in vivo* ParB DNA binding profile. We estimated these two values (D remains the same) leading to the best fit to the ChIP-seq profile. In Figure 2B, the ChIP-seq data (red symbols) display an enrichment at *parS_F* since these sites are saturated due to the high value of the binding rate B_F . The drop on both ends of *parS_F* and the subsequent slower decay can be interpreted in the framework of the “clamping and sliding” model described by Equation (3). We fitted the right side of the ChIP-seq profile (in the range $0 < x < 11$ -Kb) because the decay is longer with no roadblock hindering ParB binding, compared

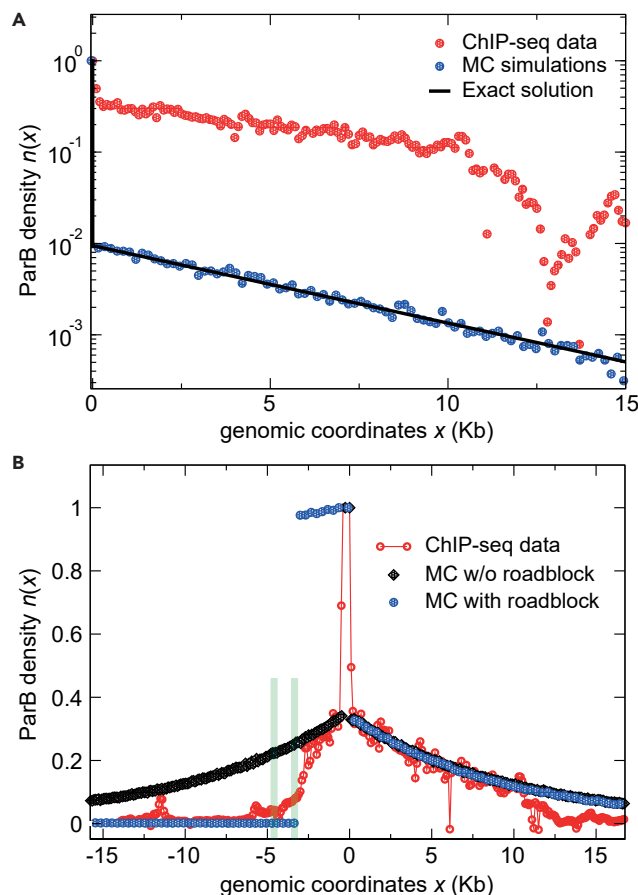


Figure 2. Comparisons between the “Clamping and Sliding” Model and the ParB_F DNA Binding Pattern

High-resolution ChIP-sequencing data from a previous study (Sanchez et al., 2015) display the average number of reads per 100-bp windows as a function of the genomic coordinates (red circles). Note that the signal at *parS_F* (coordinate 0) is normalized to 1 by averaging the number of reads over the 550-bp centromere locus.

(A) The model from Equation (2) contains the three kinetic parameters $D = 4.3 \times 10^5 \text{ bp}^2 \text{ s}^{-1}$ (Guilhas et al., 2020), $R = 0.1 \text{ s}^{-1}$, and $U = 0.017 \text{ s}^{-1}$ (Figures S1B–S1D). The exact solution (black line) and the Monte Carlo (MC; blue dots) simulation data are plotted on the right side of *parS_F*. The theoretical prediction is compared to the ChIP-seq data (Sanchez et al., 2015). The large discrepancy between the model and the ChIP-seq data is essentially due to the amplitude (value of R). (B) Simulation in the absence (black diamonds) and in the presence (blue circles) of a roadblock compared to the ChIP-seq data with the optimized parameters ($R = 1.91 \text{ s}^{-1}$ and $U = 0.0047 \text{ s}^{-1}$). The two strong roadblocks (green bars), present at $\sim 3\text{-kb}$ and 4.5-kb on the left of *parS_F*, are due to the binding of RepE to *incC* and *ori2* iterons, respectively (Rodionov et al., 1999; Sanchez et al., 2015). Note that the two MC simulations overlap on the right side of *parS_F*.

See also Figure S2.

to the left side. We used the functional form $n(x) = Ae^{-Bx}$ and first fitted the parameter $B = 1.04 (+/- 0.1) \times 10^{-4} \text{ bp}^{-1}$, which is related to μ in Equation (3) as $B = 1/\mu = \sqrt{U/D}$. Assuming $D = 4.3 \times 10^5 \text{ bp}^2 \text{ s}^{-1}$, we obtained $U = 4.7 (+/- 0.5) \times 10^{-3} \text{ s}^{-1}$. This fitted value is ~ 4 times lower than the *in vitro* estimate from Figure S1C. Also, note that the optimized value of $\mu \sim 9.6\text{-Kb}$ is ~ 2 times higher than the value estimated in the previous paragraph with the *in vitro* parameters (Figure 2A). Second, we fitted $A = 0.34 (+/- 0.1)$, which is related to ζ in Equation (3) as $A = \zeta \delta x = R/(2\sqrt{DU}) \delta x$. Assuming the previous values of D and U , this leads to $R = 1.91 (+/- 0.05) \text{ s}^{-1}$, a value ~ 20 times higher than the *in vitro* one. This theoretical prediction provides a symmetrical ParB DNA binding pattern with respect to *parS* (black diamonds, Figure 2B), which also fits with the decrease observed experimentally on the left side of *parS_F* up to $\sim 3\text{-Kb}$, beyond which the RepE/*IncC* protein-DNA complexes interfere with ParB_F binding (see below).

Using these optimized values, the number of particles N_a clamped to DNA at the steady-state is $N_a = R/U \sim 400$, which is roughly compatible with the estimation of ~ 250 or ~ 200 in average per cluster at *parS* for

ParB_F or ParB_{C_{cre}}, respectively (Table S1). Also, these values are, to a first approximation, within the biological range of ParB release time from *parS* $\tau_R \sim 1/R \sim 0.5$ s and ParB unbinding time from the DNA $\tau_U \sim 1/U \sim 213$ s.

Modeling the ParB Binding Pattern in the Presence of Roadblock

The ParB binding pattern is strongly impaired by protein-DNA complexes acting as roadblocks which strongly reduce the ParB density on DNA beyond these sites as observed both *in vivo* and *in vitro* (Breier and Grossman, 2007; Jalal et al., 2020; Rodionov et al., 1999; Sanchez et al., 2015). In order to test the prediction of roadblocks in the “clamping and sliding” model, we simulated the effect of a protein-DNA complex present at ~ 3 -Kb on the left side of *parS* which mimics the position of the RepE-*IncC* roadblock present on the plasmid F (Sanchez et al., 2015). This roadblock is modeled by a no-flux boundary condition, *i.e.*, particles cannot cross the barrier. By using the fitted parameters adapted for the case without roadblock (see previous section), we obtained the curve presented in Figure 2B (blue circles). The symmetry between the left and right sides is clearly broken with ParB particles accumulating between *parS* and the roadblock as shown by the formation of a plateau starting immediately after the *parS* site. The ParB that is released on the left side of *parS* diffuse on an isolated domain of DNA of ~ 3 -Kb comprised between the two diffusion barriers constituted by *parS* and the roadblock. ParB dimers only detach from the DNA segment at the unbinding rate U . Given that ParB diffuses with a diffusion coefficient $D = 4.3 \times 10^5 \text{ bp}^2 \text{ s}^{-1}$, the size of the isolated domain is covered in a few seconds. In a first approximation, if we consider that ParB is uniformly released from DNA between *parS* and the roadblock, we conclude that $R/(2U) \sim 200$ ParBs are homogeneously distributed over 3-Kb, giving a nearly saturated average density ~ 1 . The modeling is thus in clear contrast with the observed data from ChIP-sequencing showing that (i) the ParB binding pattern is nearly symmetrical over 3-Kb on both sides of *parS_F* and (ii) no plateau is observed between *parS* and the roadblock. This finding may also argue for an unbinding rate higher than the model prediction.

We reasoned that the unbinding rate could be higher when encountering a roadblock. Indeed, we found that the ParB unbinding kinetics is best fit with a two phase exponential decay giving two unbinding rates (Figures S1C and S1D). We used the lowest rate ($K_{\text{off_slow}} = 0.017 \text{ s}^{-1}$) in our initial modeling since it may best correspond to the physiological condition on large *parS* DNA molecules. However, ParBs may reach saturation in front of a roadblock, as it occurs *in vitro* on the small DNA probe with fixed ends (see legend Figure S1C), leading to an initial fast unbinding rate ($K_{\text{off_fast}} = 0.086 \text{ s}^{-1}$). We therefore tested the higher rate $U_{\text{C_{cre}} = 0.086 \text{ s}^{-1}$ on the left side of *parS* in front of the roadblock. With this value, 20 times higher than on the right side of *parS_F*, the pattern is not saturated but still displayed a plateau (Figure S2). This contrasts with the ChIP-seq data, which clearly indicates that the “clamping and sliding” mechanism is not able to account for a barrier to ParB clamp diffusion. Moreover, these data point out that sliding by free, unidimensional diffusion as a clamp would be highly dependent on any obstacle present along the DNA. These obstacles, mainly proteins stably bound to DNA, would strongly impair ParB sliding by reducing its diffusion away from *parS*. Notably, ChIP-seq data present ParB DNA binding patterns with dips and peaks, *i.e.*, indicating numerous obstacles along the DNA (Figures 2B and 2E.g. Baek et al., 2014; Bohm et al., 2020; Breier and Grossman, 2007; Debaugny et al., 2018; Lagage et al., 2016). Such a pattern indicating a recovery of the ParB binding signal after strong dips could not be easily explained by the sliding clamp mechanism (see discussion).

Based on these observations, we thus conclude that the “clamping and sliding” model does not apply over a large range of genomic coordinates and thus could not account fully for the assembly of the partition complex. In the following sections, we will only consider the value of the parameters R and U obtained *in vitro* from ParB_{C_{cre}}.

ParB Clusters Reassemble Faster Than Predicted by “Clamping and Sliding”

A “clamping and sliding”-based mechanism is expected to have an important effect on the *de novo* assembly kinetics of ParB. In this model, the ParB dimers load sequentially from a unique source, *parS* (Figure 1B); thus, their accumulation in clusters should increase progressively at the rate R up to a stationary population average. ParBs are considered in steady state within the clusters, as suggested by fluorescence microscopy and fluorescence recovery after photo bleaching experiments (Debaugny et al., 2018; Guilhas et al., 2020), except when the centromere site is replicated. DNA replication is highly processive, with a rate of DNA unwinding and duplication of ~ 1 -Kb per second (Kelman and O’Donnell, 1995). ParB clamped at and around *parS* should therefore be unloaded or dispersed very rapidly when DNA polymerase III holoenzyme crosses

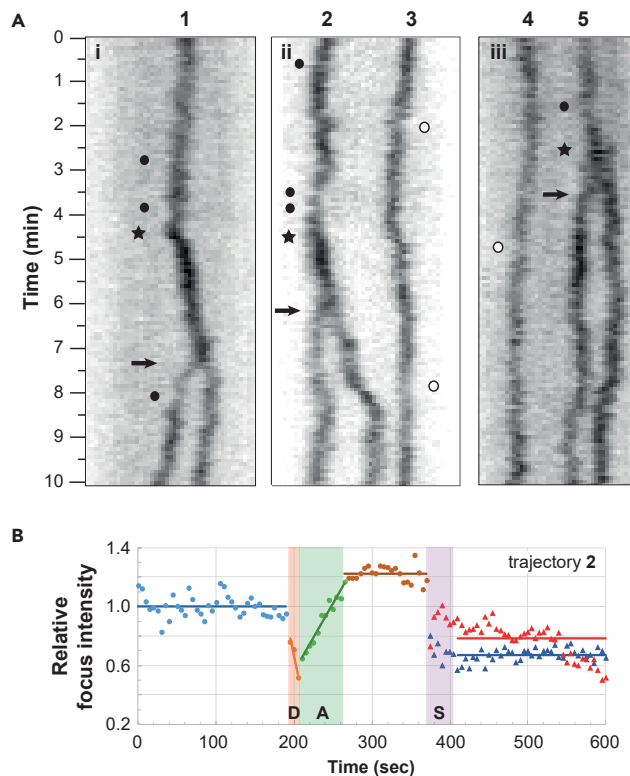


Figure 3. ParB foci Do Not Disassemble for a Long Time Before Splitting Events

(A) The trajectories of the ParB_F-mTq2 foci, labeled 1 to 5, positioned over the nucleoid length, were obtained by kymographs analyses. *E. coli* cells (i-iii), carrying a mini-F plasmid (pJYB249) with its endogenous ParABS_F system, expressing a ParB_F-mTq2 functional fusion protein, were observed by time-lapse epi-fluorescence microscopy. Images were collected every 5 s over 10 min and converted to kymograph (see [Transparent Methods](#)). The black arrows indicate the splitting events of ParB foci. Note that the ParB foci intensity increases strongly (black star) 1.5 to 3 min before the splitting events. Closed and open circles indicate low ParB fluorescence intensities in traces with or without splitting, respectively. The panel width corresponds to the length of the nucleoid.

(B) Intensity of ParB_F fluorescent foci before and after the splitting event. The integrated ParB_F-mTq2 fluorescence (thin line) from trajectory number 2 in (A) is measured every frame and plotted over time with color data points. The signal was subtracted from the average background level and normalized to 1 from the average intensity before the drop in intensity (blue dots). Dots and triangles represent the intensity of one and two ParB foci before and after the splitting event (S), respectively. R and L represent the putative centromere replication and the ParB loading steps, respectively. The blue, brown, red, and blue horizontal bars represent the mean values of the normalized ParB foci intensity of the one focus before R, before S, and the 2 foci after S, respectively. The orange and green bars represent the linear regression of the variation in ParB fluorescent intensities. Note that replication (R) is inferred from the increase in foci intensity that (I) occurs between the 2 plateau of ParB fluorescence mean intensity and (ii) takes place less than 5 min before splitting (S).

See also [Figure S3](#).

over the ParB binding zone. ParB binding to newly duplicated *parS* sites is fast but its release as a sliding clamp on either side is limited by the ParB release rate $R \sim 0.1 \text{ s}^{-1}$ (see note in [Figure S1B](#)). In the framework of the “clamping and sliding” model, it would take $\sim 20\text{--}40$ min to load an average stationary population of $\sim 125\text{--}250$ ParB after the passage of the replication fork. We argue that, at the onset of replication, such disassembly/reassembly of ParB should be visible in time-lapse epi-fluorescence microscopy.

To test this expectation, we recorded ParB clusters in an *E. coli* strain carrying a 11.1-Kb mini-F plasmid expressing the fully functional ParB_F-mTq2 fusion protein ([Diaz et al., 2015](#)). Images were taken every 5 s for a period of 10 min and displayed as kymographs ([Figure 3A](#)). Since the generation time in our growth condition is ~ 100 min, only a few cells would undergo mini-F replication during the recorded period. Note that mini-F replication occurs within 10 s and about once per cell cycle and per plasmid (present at \sim two copies per chromosome; [Frame and Bishop, 1971](#)). In addition, subsequent DNA segregation, visible as ParB_F foci

splitting, occurs within less than five min after replication (Onogi et al., 2002). In spite of these difficulties, we were able to observe three trajectories (labeled #1, 2 & 5; Figure 3A) displaying ParB foci more than 5 min before their splitting (indicated by arrows). We observed that (i) the ParB fluorescence intensity is maximal just before the splitting event and lasts at this level between one to three minutes and (ii) the ParB signals do not decrease importantly over the time course recorded. Only a few frames display transiently low signals (indicated by black circles) that last less than two frames (10 s). However, we could not exclude that these transient faint signals were due to out of focus variation of the ParB foci since such decreases were also observed independently of a splitting event as observed for trajectories #3 and #4 (indicated by white circles).

To gain quantitative insights, we measured and plotted the relative fluorescence intensity signal within ParB foci over time (Figures 3B and S3). We found that it displayed two clear transitions between three stable states: (i) the fluorescence intensity from the ParB focus is maximal before the splitting event (S) and is then nearly equally divided between the two newly formed foci; (ii) less than 5 min before the splitting event, the fluorescence intensity decreased abruptly (D) over 10-15 s, followed by an increase (A) over a short period of time (20-50 s). We propose that this decrease might correspond to the passage of the replication fork over *parS* removing ParB from the DNA and that the immediate increase might correspond to the loading of ParB at *parS* for *de novo* assembly of the partition complexes. Note that, at this stage, a doubling of the ParB fluorescence intensity is not expected since most of ParBs were already present in foci before duplication (Lim et al., 2014; Sanchez et al., 2015). We found that the observed experimental loading time (<60 s) is much shorter than the time predicted by the “clamping and sliding” model (~20–40 min; see above). Rather, it is of the same order of magnitude as the time needed for two foci to exchange their ParB (~90 s; see Debaugny et al., 2018; Guilhas et al., 2020), confirming the fast dynamics of ParB within clusters. This result suggests that the disassembly of the partition complexes is carried out too rapidly to be explained by the “clamping and sliding” model.

DISCUSSION

The understanding of the molecular mechanism responsible for the assembly of the bacterial partition complex has resisted three decades of biochemical and molecular studies performed on several ParABS systems from chromosomes and low-copy-number plasmids. How a few ParB molecules bound to *parS* sites cluster hundreds of other ParB in the vicinity of *parS* in a self-assembled high molecular weight structure that serves to position and actively segregate DNA molecules remains puzzling. The recent finding that ParB proteins belong to a new class of CTP-dependent molecular switches has opened new avenues of research to decipher this mechanism. In particular, ParB dimers switch from an opened conformation prone to DNA binding to a close conformation (clamp) upon *parS* and CTP binding that enable the release and sliding away from *parS* as a protein clamp (Jalal et al., 2020; Soh et al., 2019). In this work, we propose a physical model, namely “clamping and sliding”, for this newly proposed CTP-based ParB clamping mechanism.

First, we considered that the *parS* binding site is always occupied by ParB as suggested by the high affinity constants in the ~1 to 50 nM range for all ParBs investigated (e.g. Ah-Seng et al., 2009; Funnell and Gagnier, 1993; Taylor et al., 2015). Therefore, clamped ParBs must slide away from *parS* by free diffusion since (i) they could not cross back over this strong binding site and (ii) they are pushed away by the successive loading at *parS*.

Second, the “clamping and sliding” model contains three kinetic parameters (see Equation (2)), which were inferred from biochemical, microscopy, and ChIP-seq analyses. The apparent diffusion coefficient, D , was estimated from single-molecule live imaging assays (Guilhas et al., 2020). ParB_F displays two distinct diffusion modes depending on whether it belongs to a mobile or a clustered fraction. In the mobile fraction (not positioned at *parS* sites), $D \sim 0.7 \mu\text{m}^2 \text{s}^{-1}$ which typically corresponds to the diffusion of non-specific DNA binding proteins (Garza de Leon et al., 2017; Stracy et al., 2016; Stracy and Kapanidis, 2017). In the fraction clustered around the *parS*_F site, D was estimated at $\sim 0.05 \mu\text{m}^2 \text{s}^{-1}$ (Guilhas et al., 2020). We used this latter estimate for D_F as it corresponds to the ParB_F (~95%) present in the vicinity of *ParS*_F while the former corresponds to the ParB_F that are freely diffusing over the nucleoid. Here, we only considered that ParB clamps move unidimensionally and passively by free diffusion along DNA. Indeed, although the role of CTP hydrolysis is not known, it is unlikely that it could provide energy for translocation since (i) the hydrolysis rate is as

low as ~ 40 CTP hydrolyzed per hour, and (ii) ParB still accumulates on DNA in the presence of a non-hydrolyzable CTP analog (Jalal et al., 2020; Osorio-Valeriano et al., 2019; Soh et al., 2019).

The release rate of ParB from *parS*, R , is the limiting step for creating the flux of ParB clamps on *parS*-proximal DNA. It occurs at the same rate on both sides of *parS* as indicated by all the ChIP assays performed with numerous ParBs belonging to plasmids and chromosomes (Baek et al., 2014; Breier and Grossman, 2007; Debaugny et al., 2018; Donczew et al., 2016; Lagage et al., 2016; Rodionov et al., 1999; Sanchez et al., 2015). The value estimated from the *in vitro* data (Figure S1B and Jalal et al., 2020) is 20 times lower than the best fit from the *in vivo* ChIP-seq data using the “clamping and sliding” model (Figure 2B). This difference may arise from the small linear and closed DNA fragment used in the *in vitro* assay (Jalal et al., 2020) compared to the ~ 60 -kb circular DNA for the ChIP-seq. However, the release rate from the former is nicely fitted by a one phase association curve (Figure S1B), indicating that it is not perturbed by steric hindrance when the DNA probe becomes saturated. This suggests that R remains constant from the initial loading stage after replication to the equilibrium state with one ParB clamp released every 20 s on each side of *parS*. We cannot exclude that the release rate R is intrinsic to each ParB from different systems and that there could be a slight difference between ParB_F and $\text{ParB}_{C_{cre}}$.

The unloading rate of the clamped ParB from DNA, $U_{C_{cre}}$, was estimated from the *in vitro* unbinding curve (Jalal et al., 2020) which displays a two phase exponential decay (Figure S1C). These two unbinding rates may be explained by the small size of the closed DNA probe since, at the beginning of the decay measurement, the DNA probe is saturated with one ParB every 16-bp (see note in Figure S3) which might lead to an initial fast unbinding and to a slow one when the probe becomes unsaturated. We used the lower rate ($\sim 0.017 \text{ s}^{-1}$) in the modeling (Figure 2A) since *in vivo* and in the absence of roadblocks, ParB diffuses rapidly on large DNA molecules, plasmids, or chromosomes. However, to better fit the ChIP-seq data, the unbinding rate has to be set four times lower (Figure 2B). This optimized value corresponds to ParB clamps opening after ~ 3.6 min on average. It was previously shown that ParBs are highly dynamic with a residence time inside the clusters of ~ 100 s, *i.e.*, an exchange rate of 0.01 s^{-1} (Debaugny et al., 2018; Guilhas et al., 2020), a value in favor of the *in vitro* estimate (Figure S1C and Jalal et al., 2020).

Although the values for these three parameters sound biologically relevant, it is important to note that our modeling is performed on ideal DNA, *i.e.*, on a naked DNA without any protein bound to it. The ParB clamp harbors a central hole enabling the DNA molecule to pass through but not protein-DNA complexes (Soh et al., 2019). The unidimensional diffusion on a filament is a physical process that is completely interrupted by roadblocks such as any protein bound stably to the DNA. The “clamping and sliding” model predicts that ParB clamps would accumulate rapidly between a roadblock and *parS* leading to a plateau, saturated or not, depending on the value, high or low, of the unbinding rate used (Figure S2). Strikingly, this result is in stark contrast with the nearly symmetrical decreasing pattern observed on both sides of *parS* up to the roadblock (Figure 2B). On bacterial genomes, with an average density of one gene every Kb and with numerous transcriptional regulators bound to promoter regions (Browning and Busby, 2004), the probability of having obstacles with finite residency times over the >15 -Kb of ParB binding pattern around *parS* is very high. However, we expect these obstacles to modify only weakly and locally the average expected binding profile, so we neglected them in the simulations to focus on the main physical aspects. Therefore, it is very unlikely that numerous ParBs could cover a large genomic distance by free diffusion without being halted many times before unloading from DNA. With a “clamping and sliding” scenario, a higher density of ParB close to *parS* with an important decrease at each locus bound by a protein is rather expected but never observed in ChIP-seq data (e.g. Baek et al., 2014; Breier and Grossman, 2007; Debaugny et al., 2018; Donczew et al., 2016; Lagage et al., 2016; Sanchez et al., 2015). Also, dips in the ParB DNA binding pattern corresponding to promoter regions with transcriptional regulator binding sites have been previously described both on plasmids and chromosome DNA (Debaugny et al., 2018). Notably, a strong dip in the ParB binding pattern was observed ~ 1 -Kb on the right side of *parS*_F inserted on the *E. coli* chromosome, corresponding to the presence of a promoter in reverse orientation relative to ParB diffusion. This suggests that transcription prevents the diffusion of ParB clamps. However, after this important decrease in intensity, the ParB DNA binding signal fully recovered. Such a behavior with dips and peaks is incompatible with a sole sliding mechanism over large genomic distances.

Partition complexes are in a stationary state most of the time involving $>90\%$ of ParB but not at the onset of *parS* replication. By fast time-lapse microscopy of fluorescently tagged ParB, we were able

to observe some splitting events corresponding to the plasmid segregation step and to detect variations of fluorescent intensity that might correspond to the replication of *parS_F*: a rapid drop in the foci intensity followed by its progressive increase to a higher level than the initial one. This temporal pattern might account for the fast disassembly of partition complexes followed by their progressive re-assembly, respectively (Figure 3B). From our measurements, it takes between 20 and 50 s to reassemble partition complexes (Figures 3B and S3). The rate obtained from the *in vitro* data with only one ParB release every 10 s ($R_{Ccre} \sim 0.1 \text{ s}^{-1}$; Figure S1B and Jalal et al., 2020) would be much too slow to account for the reassembly with only 2 to 5 ParBs loaded in this period of time (requiring 40 min to load 250 ParB).

A fundamental difference between the “clamping and sliding” model and previous ParB assembly models is the oriented flux of ParB, making the system out of equilibrium. Indeed, these previous models explain the formation of ParBS assembly in the framework of thermodynamic equilibrium: “1D-spreading”, “spreading and bridging” in the strong coupling limit, “looping and clustering”, and “nucleation and caging” (Broedersz et al., 2014; Debaugny et al., 2018; Sanchez et al., 2015; Walter et al., 2018). This notable difference comes from the fact that, in the “clamping and sliding” model, ParB can only be loaded at *parS*, giving rise to a flux of ParB from *parS* to genomic regions away from *parS*. This leads to a severe limitation for this model: ParB would have to cover long genomic distances by unidimensional diffusion to account for the coverage observed in ChIP-seq experiments. On the contrary, models at thermodynamic equilibrium are based on the exchange of ParB with the cytoplasm (playing the role of a reservoir of ParB) at each genomic coordinate based on ParB-DNA and ParB-ParB interactions. Thus, in the case of equilibrium systems, the enrichment around *parS* is due to favorable energetic interactions (thus increasing the probability of the corresponding microstates) and not to the oriented gradient of ParB from to the unique source as in the “clamping and sliding” model. These ParB-DNA and ParB-ParB stochastic interactions (Fisher et al., 2017; Sanchez et al., 2015) could give rise to droplet formation (via phase transition), which is a mechanism known to quickly create a high concentration region at a targeted cellular location without requiring a membrane (Hyman et al., 2014), and which has been recently proposed to occur for partition complex assembly (Guilhas et al., 2020).

In summary, the “clamping and sliding” model is unable to describe the overall ParB DNA binding pattern with previously experimentally determined parameters and only inadequately with best fitted parameters. Moreover, it does not account for several main aspects of this assembly: (i) the rapid turnover of ParB between clusters, (ii) the absence of accumulation of ParB in front of a roadblock, and (iii) the recovery of the ParB binding after strong dips in the profile. Also, the presence of numerous proteins bound along the DNA would prevent ParB clamps from diffusing rapidly to large genomic distances from *parS* centromere sites. For these reasons, the “clamping and sliding” model alone is not a plausible physical mechanism for fully explaining the partition complex assembly mechanism. We rather propose the possibility that a combination of two mechanisms is at play for the assembly of higher-order nucleoprotein ParBS complexes: one occurring at short distance, namely “clamping and sliding”, and one at long distance. We speculate that the distance covered by diffusing clamped ParB is of the order of the distance between two genes, *i.e.*, $\sim 1\text{-Kb}$. Indeed, this distance corresponds to average transcription units that would induce barriers arising from both transcription factors and RNA polymerases for diffusing clamped ParB. We therefore envision that ParB clamps only accumulate in the close vicinity of *parS* sites. These ParBs have undergone a conformational change, occurring possibly (i) with the transition between the *parS*-bound and the sliding clamp states (Soh et al., 2019) and/or (ii) with the stimulation of CTP hydrolysis switching ParB from the closed (CTP bound) to the open conformation (apo/CDP bound) (Osorio-Valeriano et al., 2019) that modify the N-terminal domain involved in ParB-ParB dimer interactions (Osorio-Valeriano et al., 2019; Surtrees and Funnell, 1999) rendering these ParB prone to interact with other ParBs. The accumulation of these numerous pruned ParBs would increase the number of nucleation points that can further recruit most of the intracellular ParBs into a highly concentrated cluster with a phase transition-like mechanism (Guilhas et al., 2020). The “nucleation and caging” model remains attractive to explain the ParB-ParB interactions occurring at long distance ($> \sim 1\text{-Kb}$) as it currently best describes the ParB DNA binding pattern (Debaugny et al., 2018; Sanchez et al., 2015). Such a combination of two modes of actions, “clamping and sliding” and “nucleation and caging”, is also compatible with the recent study that reveals the droplet-like behavior of the ParB assemblies (Guilhas et al., 2020). Further experimental and modeling work is needed to provide new insights into this crucial higher-order nucleoprotein complex that drives the segregation of the bacterial DNA.

Limitations of the Study

Our modeling approach is based on general principles, and although it was applied only to the F-plasmid ParB, we believe that the conclusion of our study could be generalized to other ParB proteins.

Resource Availability

Lead Contact

Further information and requests for resources and reagents should be directed to and will be fulfilled by the Lead Contact, Jean-Yves Bouet (jean-yves.bouet@univ-tlse3.fr).

Materials Availability

This study did not generate new unique reagents.

Data and Code Availability

Unpublished custom code is available upon request from the corresponding authors. The accession number for the raw ChIP-seq data reported in this paper is GEO: GSE67869.

METHODS

All methods can be found in the accompanying [Transparent Methods supplemental file](#).

SUPPLEMENTAL INFORMATION

Supplemental Information can be found online at <https://doi.org/10.1016/j.isci.2020.101861>.

ACKNOWLEDGMENTS

We thank all members of the GeDy team for fruitful discussions and P. Rousseau, B. Ton-Hoang M. Campos, and F. Cornet for critical reading of the manuscript. This work was supported by Agence Nationale de la Recherche (ANR-14-CE09-0025-01), CNRS 80Prime (Numacoiled) grant, CNRS "Modélisation pour le Vivant" Grant (CoilChrom), and by the LabEx NUMEV (ANR 2011-LABX-076) within the I-SITE MUSE.

AUTHORS CONTRIBUTION

Conceptualization, J.-C.W. and J.-Y.B.; Methodology, J.-C.W. and J.-Y.B.; Software, J.-C.W.; Validation, J.R., J.-C.W., and J.-Y.B.; Formal analysis, N.-O.W., J.P., J.D., F.G., J.-Y.B., and J.-C.W.; Investigation, J.R., J.-C.W., and J.-Y.B.; Resources, J.-Y.B.; Writing – original draft, J.-C.W. and J.-Y.B.; Writing – Review & Editing, J.P., A.P., N.-O.W., J.-C.W., and J.-Y.B.; Visualization, J.-C.W. and J.-Y.B.; Supervision, J.-C.W. and J.-Y.B.; Project administration, J.-C.W. and J.-Y.B.; Funding Acquisition, J.-C.W. and J.-Y.B.

DECLARATION OF INTEREST

The authors declare no competing interests.

Received: July 27, 2020

Revised: October 16, 2020

Accepted: November 19, 2020

Published: December 18, 2020

REFERENCES

- Adachi, S., Hori, K., and Hiraga, S. (2006). Subcellular positioning of F plasmid mediated by dynamic localization of SopA and SopB. *J. Mol. Biol.* 356, 850–863.
- Ah-Seng, Y., Lopez, F., Pasta, F., Lane, D., and Bouet, J.Y. (2009). Dual role of DNA in regulating ATP hydrolysis by the SopA partition protein. *J. Biol. Chem.* 284, 30067–30075.
- Baek, J.H., Rajagopala, S.V., and Chatteraj, D.K. (2014). Chromosome segregation proteins of *Vibrio cholerae* as transcription regulators. *MBio* 5, e01061–01014.
- Bohm, K., Giacomelli, G., Schmidt, A., Imhof, A., Koszul, R., Marbouty, M., and Bramkamp, M. (2020). Chromosome organization by a conserved condensin-ParB system in the actinobacterium *Corynebacterium glutamicum*. *Nat. Commun.* 11, 1485.
- Bouet, J.Y., and Funnell, B.E. (2019). Plasmid localization and partition in enterobacteriaceae. *EcoSal Plus* 8, <https://doi.org/10.1128/ecosalplus.ESP-0003-2019>.
- Bouet, J.Y., and Lane, D. (2009). Molecular basis of the supercoil deficit induced by the mini-F plasmid partition complex. *J. Biol. Chem.* 284, 165–173.
- Bouet, J.Y., Rech, J., Egloff, S., Biek, D.P., and Lane, D. (2005). Probing plasmid partition with centromere-based incompatibility. *Mol. Microbiol.* 55, 511–525.

- Bouet, J.Y., Stouf, M., Lebailly, E., and Cornet, F. (2014). Mechanisms for chromosome segregation. *Curr. Opin. Microbiol.* **22C**, 60–65.
- Breier, A.M., and Grossman, A.D. (2007). Whole-genome analysis of the chromosome partitioning and sporulation protein Spo0J (ParB) reveals spreading and origin-distal sites on the *Bacillus subtilis* chromosome. *Mol. Microbiol.* **64**, 703–718.
- Broedersz, C.P., Wang, X., Meir, Y., Loparo, J.J., Rudner, D.Z., and Wingreen, N.S. (2014). Condensation and localization of the partitioning protein ParB on the bacterial chromosome. *Proc. Natl. Acad. Sci. U S A* **111**, 8809–8814.
- Browning, D.F., and Busby, S.J. (2004). The regulation of bacterial transcription initiation. *Nat. Rev. Microbiol.* **2**, 57–65.
- Debaugny, R.E., Sanchez, A., Rech, J., Labourdette, D., Dornigac, J., Geniet, F., Palmeri, J., Parmeggiani, A., Boudsocq, F., Anton Leberre, V., et al. (2018). A conserved mechanism drives partition complex assembly on bacterial chromosomes and plasmids. *Mol. Syst. Biol.* **14**, e8516.
- Diaz, R., Rech, J., and Bouet, J.Y. (2015). Imaging centromere-based incompatibilities: insights into the mechanism of incompatibility mediated by low-copy number plasmids. *Plasmid* **80**, 54–62.
- Donczew, M., Mackiewicz, P., Wrobel, A., Flardh, K., Zakrzewska-Czerwinska, J., and Jakimowicz, D. (2016). ParA and ParB coordinate chromosome segregation with cell elongation and division during *Streptomyces* sporulation. *Open Biol.* **6**, 150263.
- Erdmann, N., Petroff, T., and Funnell, B.E. (1999). Intracellular localization of P1 ParB protein depends on ParA and parS. *Proc. Natl. Acad. Sci. U S A* **96**, 14905–14910.
- Fisher, G.L., Pastrana, C.L., Higman, V.A., Koh, A., Taylor, J.A., Butterer, A., Craggs, T., Sobott, F., Murray, H., Crump, M.P., et al. (2017). The structural basis for dynamic DNA binding and bridging interactions which condense the bacterial centromere. *Elife* **6**, e28086.
- Frame, R., and Bishop, J.O. (1971). The number of sex factors per chromosome in *Escherichia coli*. *J. Biochem.* **121**, 93–103.
- Funnell, B.E. (2016). ParB partition proteins: complex formation and spreading at bacterial and plasmid centromeres. *Front. Mol. Biosciences* **3**, 44.
- Funnell, B.E., and Gagnier, L. (1993). The P1 plasmid partition complex at parS: II. Analysis of ParB protein binding activity and specificity. *J. Biol. Chem.* **268**, 3616–3624.
- Garza de Leon, F., Sellars, L., Stracy, M., Busby, S.J.W., and Kapanidis, A.N. (2017). Tracking low-copy transcription factors in living bacteria: the case of the lac repressor. *Biophys. J.* **112**, 1316–1327.
- Guilhas, B., Walter, J.C., Rech, J., David, G., Walliser, N.O., Palmeri, J., Mathieu-Demaziere, C., Parmeggiani, A., Bouet, J.Y., Le Gall, A., et al. (2020). ATP-driven separation of liquid phase condensates in bacteria. *Mol. Cell* **79**, 293–303 e294.
- Hyman, A.A., Weber, C.A., and Julicher, F. (2014). Liquid-liquid phase separation in biology. *Annu. Rev. Cel. Dev. Biol.* **30**, 39–58.
- Jalal, A.S., Tran, N.T., and Le, T.B. (2020). ParB spreading on DNA requires cytidine triphosphate in vitro. *Elife* **9**, e53515.
- Jalal, A.S.B., and Le, T.B.K. (2020). Bacterial chromosome segregation by the ParABS system. *Open Biol.* **10**, 200097.
- Kelman, Z., and O'Donnell, M. (1995). DNA polymerase III holoenzyme: structure and function of a chromosomal replicating machine. *Annu. Rev. Biochem.* **64**, 171–200.
- Lagage, V., Boccard, F., and Vallet-Gely, I. (2016). Regional control of chromosome segregation in *Pseudomonas aeruginosa*. *PLoS Genet.* **12**, e1006428.
- Lim, H.C., Surovtsev, I.V., Beltran, B.G., Huang, F., Bewersdorf, J., and Jacobs-Wagner, C. (2014). Evidence for a DNA-relay mechanism in ParABS-mediated chromosome segregation. *Elife* **3**, e02758.
- Lynch, A.S., and Wang, J.C. (1995). SopB protein-mediated silencing of genes linked to the sopC locus of *Escherichia coli* F plasmid. *Proc. Natl. Acad. Sci. U S A* **92**, 1896–1900.
- Murray, H., Ferreira, H., and Errington, J. (2006). The bacterial chromosome segregation protein Spo0J spreads along DNA from parS nucleation sites. *Mol. Microbiol.* **61**, 1352–1361.
- Onogi, T., Miki, T., and Hiraga, S. (2002). Behavior of sister copies of mini-F plasmid after synchronized plasmid replication in *Escherichia coli* cells. *J. Bacteriol.* **184**, 3142–3145.
- Osorio-Valeriano, M., Altegoer, F., Steinchen, W., Urban, S., Liu, Y., Bange, G., and Thanbichler, M. (2019). ParB-type DNA segregation proteins are CTP-dependent molecular switches. *Cell* **179**, 1512–1524 e1515.
- Rodionov, O., Lobočka, M., and Yarmolinsky, M. (1999). Silencing of genes flanking the P1 plasmid centromere. *Science* **283**, 546–549.
- Sanchez, A., Cattoni, D.I., Walter, J.C., Rech, J., Parmeggiani, A., Nollmann, M., and Bouet, J.Y. (2015). Stochastic self-assembly of ParB proteins builds the bacterial DNA segregation apparatus. *Cell Syst.* **1**, 163–173.
- Sanchez, A., Rech, J., Gasc, C., and Bouet, J.Y. (2013). Insight into centromere-binding properties of ParB proteins: a secondary binding motif is essential for bacterial genome maintenance. *Nucleic Acids Res.* **41**, 3094–3103.
- Soh, Y.M., Davidson, I.F., Zamuner, S., Basquin, J., Bock, F.P., Taschner, M., Veening, J.W., De Los Rios, P., Peters, J.M., and Gruber, S. (2019). Self-organization of parS centromeres by the ParB CTP hydrolase. *Science* **366**, 1129–1133.
- Stracy, M., Jaciuk, M., Uphoff, S., Kapanidis, A.N., Nowotny, M., Sherratt, D.J., and Zawadzki, P. (2016). Single-molecule imaging of UvrA and UvrB recruitment to DNA lesions in living *Escherichia coli*. *Nat. Commun.* **7**, 12568.
- Stracy, M., and Kapanidis, A.N. (2017). Single-molecule and super-resolution imaging of transcription in living bacteria. *Methods (San Diego, Calif.)* **120**, 103–114.
- Surtees, J.A., and Funnell, B.E. (1999). P1 ParB domain structure includes two independent multimerization domains. *J. Bacteriol.* **181**, 5898–5908.
- Taylor, J.A., Pastrana, C.L., Butterer, A., Pernstich, C., Gwynn, E.J., Sobott, F., Moreno-Herrero, F., and Dillingham, M.S. (2015). Specific and non-specific interactions of ParB with DNA: implications for chromosome segregation. *Nucleic Acids Res.* **43**, 719–731.
- Walter, J.-C., Lepage, T., Dornigac, G., Geniet, F., Parmeggiani, A., Palmeri, J., Bouet, J.-Y., and Junier, I. (2020). Models of supercoiled DNA interacting with an anchored cluster of proteins: towards a quantitative estimation of chromosomal DNA supercoiling. *arXiv*, 200200111.
- Walter, J.C., Walliser, N.O., David, G., Dornigac, J., Geniet, F., Palmeri, J., Parmeggiani, A., Wingreen, N.S., and Broedersz, C.P. (2018). Looping and clustering model for the organization of protein-DNA complexes on the bacterial genome. *New J. Phys.* **20**, 035002.

iScience, Volume 23

Supplemental Information

Physical Modeling of a Sliding Clamp Mechanism for the Spreading of ParB at Short Genomic Distance from Bacterial Centromere Sites

Jean-Charles Walter, Jérôme Rech, Nils-Ole Walliser, Jérôme Dorignac, Frédéric Geniet, John Palmeri, Andrea Parmeggiani, and Jean-Yves Bouet

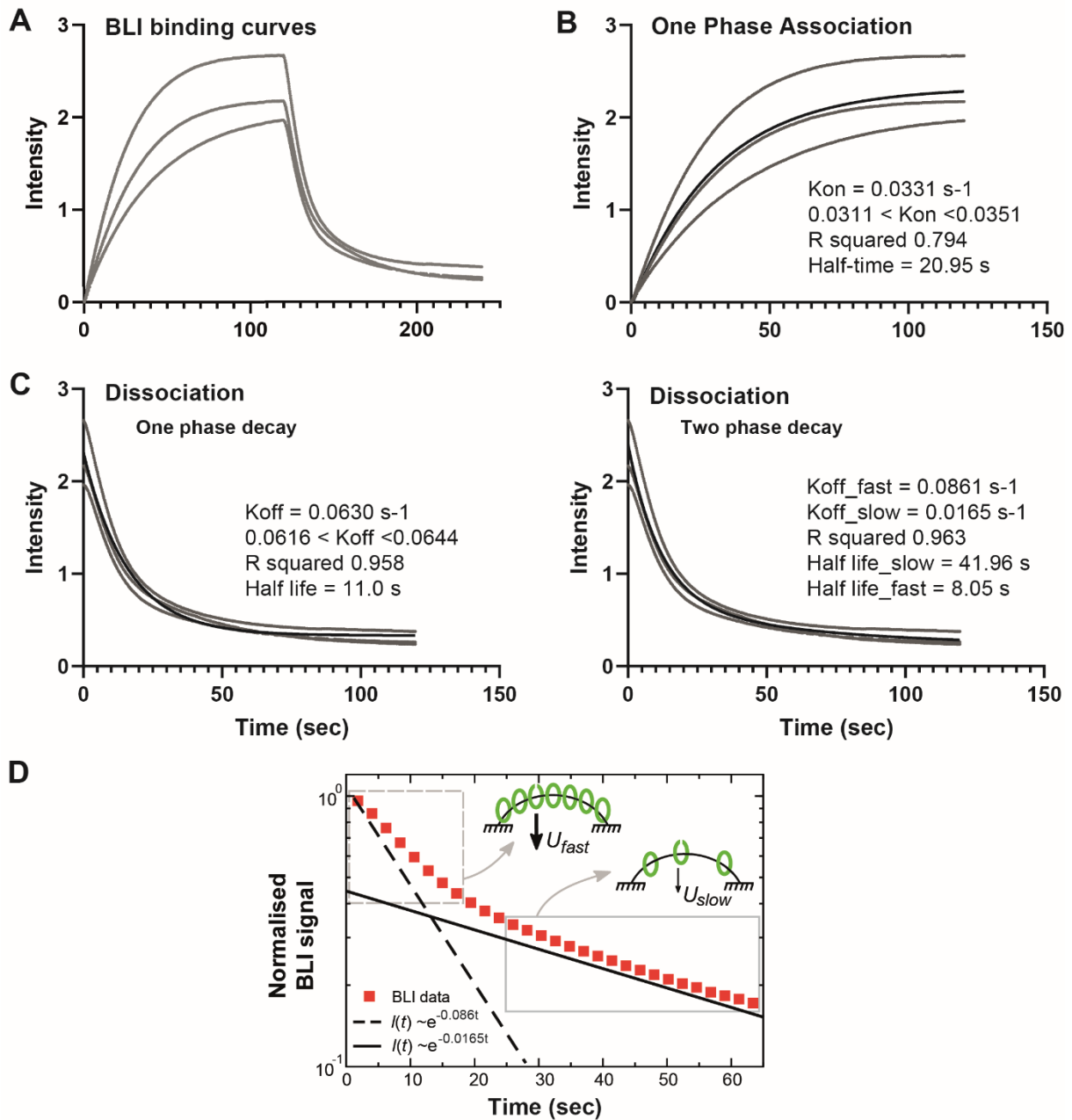


Figure S1: Kinetics of ParB loading and unbinding to a closed DNA in the presence of CTP. Related to Figure 1B.

The BLI measurement of ParB-DNA interaction was monitored by the wavelength shifts during association or dissociation of ParB to a 169-bp double-stranded *parS* DNA (from Figure 2A in Jalal et al., 2020). The probe DNA is bound at both ends to the sensor surface (no free end). The reactions were measured with and without 1 μM of ParB (dimer) for 120 sec for association and dissociation phases, respectively. The three replicates of the published BLI data were plotted to display the variation in intensity versus time (second). Data points and fitted curves were represented by grey dots and thin black lines, respectively. The parameters computed using nonlinear regression tools (see Methods) were displayed on the right.

A- ParB association and dissociation with a closed DNA substrate. The closed DNA containing one *parS* site was infused at time zero with ParB_{Ccre} for 120 sec and then washed out without ParB_{Ccre}. Importantly, note that the classical analysis for protein-DNA binding kinetics could not be applied since this model depends on the concentration of ligands. Here, ParB_{Ccre} clamps are delivered from *parS* at a constant rate, i.e. independently of the ParB concentration (ParB concentration is above the KD for ParB-*parS* binding; Jalal et al., 2020). For this reason, we analyzed independently the association and dissociation phases (see panels **B** and **C**).

B- ParB release on non-specific DNA from *parS* analyzed by ‘One-phase association’ tool. The plot is nicely fitted by an exponential giving a rate of $A \sim 0.033 \text{ s}^{-1}$. This rate A corresponds to the ParB release rate from *parS* (R) minus the unbinding rate of ParB from DNA (U). Therefore, from $A = R - U$, we calculated $R = A + U \sim 0.12 \text{ s}^{-1}$ with $U \sim 0.086 \text{ s}^{-1}$ (cf panels **C-D**). Note that this experiment, performed in a non-stationary phase starting from an empty DNA, is highly relevant to describe the partition complex recovery stage after DNA duplication upon replication forks passage through *parS*.

C- ParB unbinding from DNA. The unbinding curve was analyzed by ‘one phase’ (left) or ‘two phase’ (right) ‘exponential decay’. The ‘one phase’ decay provides a $K_{off} \sim 0.061 \text{ s}^{-1}$. The ‘two phase decay’ provides two dissociation constants: $K_{off_fast} \sim 0.086 \text{ s}^{-1}$ and $K_{off_slow} \sim 0.017 \text{ s}^{-1}$. We used the K_{off_fast} for estimating the release rate R in panel B since it is performed on the very short and closed DNA probe. However, we used the K_{off_slow} in our modeling since we propose that it represents the physiological condition where the DNA does not harbor ends attached to a surface close to *parS*. The *in vitro* setup may favor a fast dissociation of ParB from DNA when saturation is reached, a situation that may also occur *in vivo* when ParB accumulates in front of a roadblock on DNA (see main text).

D- ParB unbinding from DNA is described by a ‘two phase’ exponential decay. The signal intensity is normalized to 1 at time 0 and plotted as a function of time in a log-lin scale to discriminate between ‘one phase’ or ‘two phase’ decay. Only one replica of the BLI data (red squares) is displayed for clarity. Theoretical curves for exponential decays ($\sim e^{-K_{off}t}$) were plotted with $K_{off} = 0.086 \text{ s}^{-1}$ (dotted line) and 0.0165 s^{-1} (black line). This representation clearly indicates that only a ‘two phase’ exponential decay could fit the ParB unbinding curve. The grey rectangles with dotted and full lines correspond to the data for the fast and slow exponential decays, respectively, and may describe the initial (U_{fast}) and steady state (U_{slow}) ParB unbinding rates (black arrows), as represented by the corresponding schematic representations (indicated by the grey arrows). Schema represents the *in vitro* BLI setup with DNA attached at both ends to the surface (black lines). Closed and open green ovals represent ParB dimers in close (clamp) and open confirmations, respectively.

We used the K_{off_fast} for estimating the release rate R in panel B since it is performed on the very short and closed DNA probe. However, we used the K_{off_slow} in our modeling since we propose that it represents the physiological condition where the DNA does not harbor ends attached to a surface close to *parS*. The *in vitro* setup may favor a fast dissociation of ParB from DNA when saturation is reached, a situation that may also occur *in vivo* when ParB accumulates in front of a roadblock on DNA (see main text).

Note: We estimated that the 169-bp DNA could carry ~ 10 ParB at saturation since ParB dimers could bind every 16-bp without steric hindrance (Sanchez et al., 2015). This estimation is also compatible with the shift of the BLI signal at saturation, which is about 10-times higher than with a unique ParB bound to *parS* (measured in the absence of CTP; Jalal et al., 2020).

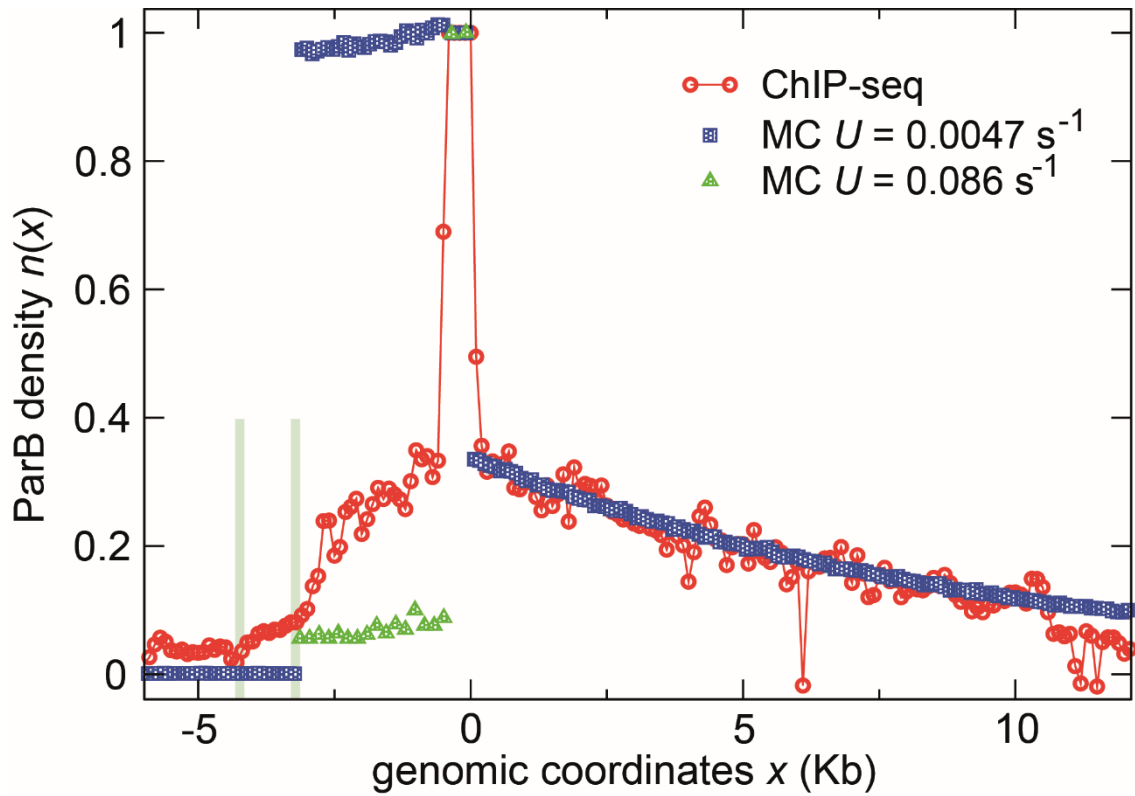


Figure S2: The ‘Clamping and sliding’ model does not describe the ParB binding pattern in the presence of a roadblock. Related to Figure 2.

The ChIP-sequencing data (Sanchez et al., 2015) is represented as in Figure 2B by red circles. The two roadblocks at ~3-kb and 4.5-kb on the left of $parS_F$ are indicated by the green bars. The MC simulations were performed with the indicated values of the unbinding rate U . For the higher unbinding rate, the MC simulation (green triangles) is only plotted on the left side of $parS_F$, showing that the decrease also reaches a plateau by contrast to the ChIP-seq data.

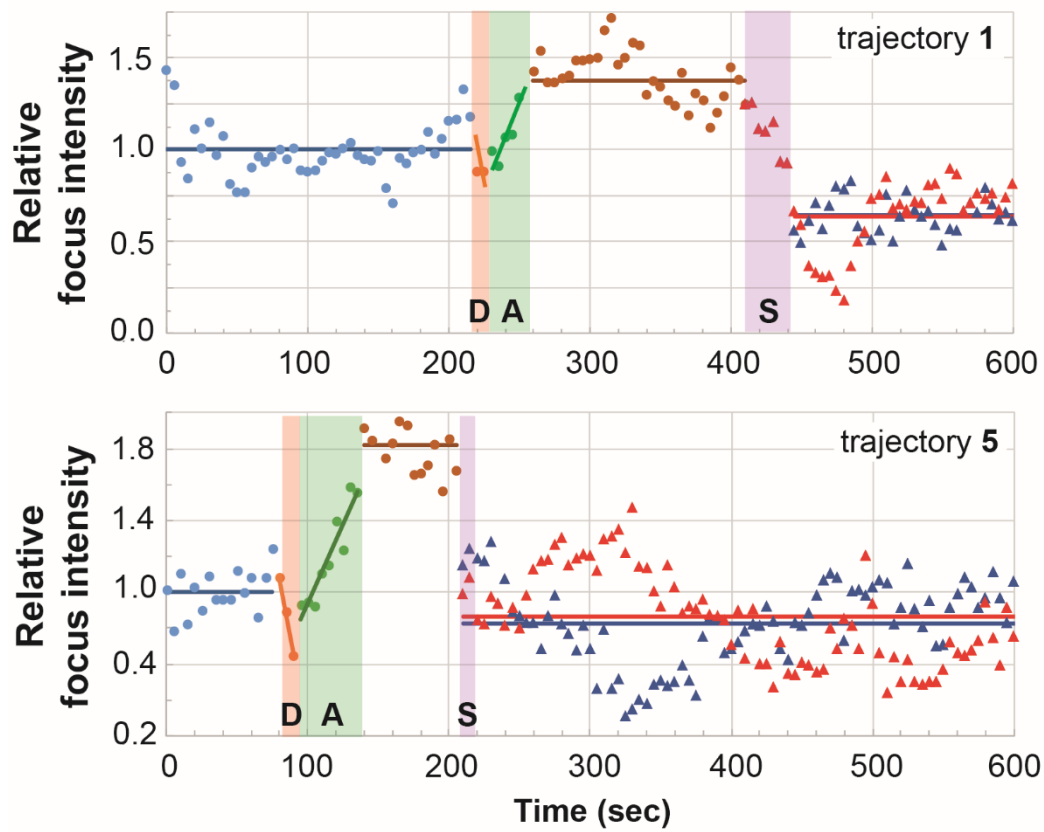


Figure S3: Quantification of the fluorescence intensity of the ParB foci over time. Related to Figure 3. The trajectories number 1 and 5 in Figure 3A were quantified and represented as in Figure 3B.

Table S1: ParB concentrations inside the cell for *C. crescentus* and the *E. coli* plasmid F. Related to Figures 1 and 2.

	ParB dimers per cell	Mole $\times 10^{-21}$	Volume (fL)	Concentration (μM)	<i>Na</i> (observed)
ParB _F	850 \pm 120	1.41	0.5	2.8	
ParB _F (<i>parS</i> -associated)	810	1.34	0.4 10^{-4}	10 10^3	~250
ParB _F (freely diffusing)	43	0.07	0.5	0.14	
ParB _{Ccre}	360 \pm 40	0.6	0.25	2.4	
ParB _{Ccre} (<i>parS</i> -associated)	290	0.48	0.2 10^{-2}	2.4 10^2	~200
ParB _{Ccre} (freely diffusing)	70	0.12	0.25	0.48	

ParB concentrations are estimated from previous studies that have determined the average intracellular number of ParB_F (Adachi et al., 2006; Bouet et al., 2005 and ParB_{Ccre} (Lim et al., 2014) per cell, the proportion of ParB_F (Sanchez et al., 2015; Guilhas et al., 2020) and ParB_{Ccre} (Lim et al., 2014) in ParB clusters, the number of ParB clusters for the plasmid F (~3.2; Sanchez et al., 2015) and for *C. crescentus* (1 to 2; Lim et al., 2014), and the size (radius) of ParB clusters for the plasmid F (22 nm; Guilhas et al., 2020) and for *C. crescentus* (78 nm; Lim et al., 2014). The volume either corresponds to the volume of the nucleoid over which ParB molecules freely diffuse or to the volume of the ParB clusters for *parS*-associated ParBs. *Na*, the number of ParB clamped on the DNA in the framework of the 'Clamping & sliding' model, corresponds to the *parS*-associated ParB divided by the number of cluster per cell.

Transparent Methods

Monte Carlo simulations

The simulations data presented in Fig. 2A-B are performed with a sequential Monte Carlo (MC) algorithm. The 60-Kb plasmid is modeled by a filament of $N = 3750$ sites, each of length $\delta x = 16$ -bp corresponding to the footprint of a ParB protein. The MC time step is defined as a sweep of the N sites of the filament representing the plasmid. When a site is chosen during the MC sweep, different events can occur: if the site is occupied by ParB, this protein (i) can disappear from the lattice at a rate U or (ii) diffuses with a diffusion constant D ; if the chosen site is neighbor to either side of $parS$, a ParB protein is injected at a rate R . We need to perform simulation on a sufficiently small time interval to prevent the appearance of numerical approximations (the analytic solution Eq.(3) is used as a benchmark for the simulations). We used an integration time δt corresponding to the time needed for ParB to diffuse over one site (*i.e.* a random step to the right or to the left), thus $\delta t = \delta x^2/D$. The corresponding release rate R and unbinding rate U on the time interval δt become $R\delta t = R\delta x^2/D$ and $U\delta t = U\delta x^2/D$, respectively. Thus, we need D Monte Carlo iterations to perform an evolution of the system during one second. It is important to remark that, in the absence of interactions between ParB proteins, several particles may be present on the same site. Thus, when a site is chosen, we update all particles on the site.

We define a no-flux boundary condition at $parS$, so that $parS$ acts as a barrier for diffusion. Thus a particle is released with a probability one-half on either side of $parS$, *i.e.* the total release rate R becomes $R/2$ on each side (this is reflected in Eq.(3)).

In Fig. 2B, the roadblock is defined as an additional barrier located at 3-Kb from $parS_r$ (left side); thus particles that are released on the left side of $parS_r$ have to evolve on an isolated filament of ~ 3 -Kb between the roadblock and $parS$. As the diffusion is fast ($D = 4.3 \times 10^5 \text{ bp}^2 \text{ s}^{-1}$) with respect to 3-Kb, a good approximation of the distribution is thus a plateau, whose height depends on $\delta x R / (2U \times 3Kb)$. In order to prevent occupancy to become larger than one in the case of large density, we do not allow new particles to be released when the filament is completely covered (*i.e.* saturation).

The initial configuration of the system is empty. Before starting the sampling of the ParB density, we ensure that stationarity is reached. It is helpful to realize that the typical time needed to fill the system at the average stationary value of particles R/U corresponds to the release time $1/R$ times R/U , thus $1/U$ corresponds to the average time to fill the system (starting from an empty configuration). It corresponds also to the typical time to replace all the particles of the system in the stationary state, thus it corresponds to the correlation time. In Fig. 2A and 2B, we perform $10 \times 1/U$ seconds of evolution before starting the sampling in order to ensure stationarity. Subsequently, the sampling was started and, to ensure decorrelation of the system between two samplings, samplings were spaced by a time $1/U$. Averages were performed over 50.000 independent samplings in Fig. 2A and 2B.

We finally note that we can also solve the version of Eq.(2) with a discrete space formulation, *i.e.* the same framework as Monte Carlo simulations. The discrete solution is the same as Eq.(3) in the limit of $\mu/\delta x \gg 1$, *i.e.* when the characteristic length of the profile is much larger than the microscopic length δx of the system. This limit is satisfied for all the simulations of the paper (\sim few Kb and $\delta x = 16$ -bp), namely in Fig. 2A where we observed the excellent agreement between both approaches.

The codes used for our simulations are available upon request.

Release (R) and unbinding (U) parameters

The kinetic studies for ParB binding and unbinding in the presence of CTP, assayed by bio-layer interferometry (BLI), were performed elsewhere (Fig. 2A in Jalal et al., 2020). To

summarize briefly, the measurement of ParB-DNA interaction was monitored by the wavelength shifts during association or dissociation of ParB to a 169-bp biotinylated double-stranded *parS* DNA bound at both ends to the sensor surface (no free end). The reactions were measured with and without 1 μ M of ParB (dimer) for 120 sec for association and dissociation phases, respectively.

The uploaded data were analyzed using GraphPad Prism 8© to determine the ParB kinetics parameters. The rates of ParB release from *parS* (*R*) and ParB unbinding from DNA (*U*) were calculated using the nonlinear regression fitting tools ‘One phase association’ and ‘One phase decay’ or ‘Two phase decay’, respectively (Fig. S1).

ChIP-sequencing data

High-resolution ChIP-sequencing were from a previous study with 5010⁶ reads per library (Sanchez et al., 2015). Data from the ~60-Kb plasmid F derivative (pOX38B) grown in *E. coli* cells displayed the average number of reads (first nucleotide of each DNA fragment sequenced) per 100-bp windows. The signal is normalized to 1 by averaging the number of reads over the centromere sequence *parS_F* (550-bp carrying the 1243-bp repeat sequences; Pillet et al., 2011). The drop on the left side corresponds to the RepE/*incC* roadblock (Sanchez et al., 2015).

Bacterial strain and growth condition

E. coli K-12 strain DLT1215 (Bouet et al., 2006), carrying the reporter mini-F plasmids pJYB249 (Guilhas et al., 2020), were grown at 30°C in M9-Gly (M9 minimal medium supplemented with 0.4% glycerol, 1 mM MgSO₄, 0.1 mM CaCl₂, 40 μ g.ml⁻¹ thymine, 20 μ g.ml⁻¹ leucine and 1 μ g.ml⁻¹ thiamine) with a generation time of ~100 min allowing the visualization of 1 to 3 plasmids per cell.

Microscopy and image analyses

Mid-exponential phase bacterial cultures were sampled, concentrated 5-times by centrifugation and resuspension in M9-Gly, and 0.7 μ l was deposited onto slides coated with 1% agarose buffered in M9 solution. Samples were visualized at 30°C as previously described (Diaz et al., 2015), with images taken every 5 seconds over 10 minutes periods. Nis-Elements AR software (Nikon) was used for image capture and editing. Kymographs were generated using the “MultipleKymograph” plugin (ImageJ software). Foci detection and integrated fluorescence were measured using “Trackmate” plugin (Tinevez et al., 2017) in Fiji software.

Supplemental References

Bouet, J.Y., Bouvier, M., and Lane, D. (2006). Concerted action of plasmid maintenance functions: partition complexes create a requirement for dimer resolution. *Mol Microbiol* 62, 1447-1459.

Pillet, F., Sanchez, A., Lane, D., Anton Leberre, V., and Bouet, J.Y. (2011). Centromere binding specificity in assembly of the F plasmid partition complex. *Nucleic Acids Res* 39, 7477-7486.

Tinevez, J.Y., Perry, N., Schindelin, J., Hoopes, G.M., Reynolds, G.D., Laplantine, E., Bednarek, S.Y., Shorte, S.L., and Eliceiri, K.W. (2017). TrackMate: An open and extensible platform for single-particle tracking. *Methods (San Diego, Calif)* 115, 80-90.