



Research



Cite this article: Kane EA, Garner AM, Yadav S, Hume LA, Pesacreta T. 2025 Epidermal microstructures on the paired fins of marine sculpins suggest new functional hypotheses supporting benthic station-holding. *R. Soc. Open Sci.* **12**: 241965.

<https://doi.org/10.1098/rsos.241965>

Received: 11 November 2024

Accepted: 20 January 2025

Subject Category:

Organismal and evolutionary biology

Subject Areas:

biomechanics

Keywords:

unculi, microridge, Psychrolutidae, pectoral fin, friction enhancement, water flow

Authors for correspondence:

Austin M. Garner

e-mail: agarner@syrr.edu

Emily A. Kane

e-mail: emily.kane@louisiana.edu

Electronic supplementary material is available online at <https://doi.org/10.6084/m9.figshare.c.7699939>.

Epidermal microstructures on the paired fins of marine sculpins suggest new functional hypotheses supporting benthic station-holding

Emily A. Kane¹, Austin M. Garner², Shubham Yadav¹, L. Ann Hume³ and Tom Pesacreta³

¹University of Louisiana at Lafayette, Lafayette, LA, USA

²Department of Biology & BioInspired Institute, Syracuse University, Syracuse, NY, USA

³University of Louisiana at Lafayette Microscopy Center, Lafayette, LA, USA

EAK, 0000-0002-0414-4875; AMG, 0000-0003-1053-9168

Harsh environments, such as those with breaking waves and turbulent flows, present extreme challenges to organismal survival. Many animals exploiting these habitats possess adaptations to maintain position under dynamic flow conditions, such as reversible or permanent attachment systems. However, some station-holding fishes (e.g. sculpins) instead rely on morphological and behavioural modifications of their pectoral fins to increase friction with the substrate and combat drag. Despite epidermal microstructures on the fins of other benthic fishes, little exploration of pectoral fin surfaces at the microscopic scale has been undertaken in sculpins. Using scanning electron microscopy, we discovered microscopic, fibrillar projections contained within single cells on the ventral surfaces of the paired fin rays of two intertidal and two subtidal species of marine sculpins. In contrast to subtidal species, the intertidal species possessed epidermal cells with discrete channels separating groups of fibrillar projections. These features bear a striking resemblance to epidermal microstructures described in other fishes but have distinct morphological differences. We suggest the hypothesis that these previously overlooked features contribute to sculpin station-holding performance via enhanced mechanical interactions with the substrate, suggesting new taxa within which to explore potential mechanisms of underwater friction enhancement and adhesion.

1. Introduction

Animals face many challenges in their environments, often possessing specialized morphological and functional adaptations to endure conditions that may otherwise limit survival. For example, aquatic environments with fast or turbulent flow can easily displace or dislodge animals and result in negative outcomes, including predation, injury and/or death. The monumental challenge of dealing with flow can thus act as an environmental filter on morphological traits, such that specific phenotypes are more common in more challenging environments [1–3]. Benthic animals subjected to strong hydrodynamic forces imposed by flow have often evolved discrete attachment systems, such as suction or adhesive-secreting discs, that help them maintain their position on aquatic substrates when exposed to flow [4–7]. However, attachment systems are not ubiquitous in turbulent environments, or even in benthic animals that maintain their position in flow. In fishes, for example, species without discrete attachment systems maintain a stationary position (i.e. station-hold) by co-opting their body and fins to oppose or limit dislodgement forces [3,8–18]. Whole animal traits such as streamlined body shapes, small body size and negative buoyancy are important contributors to this function, but the use of the pectoral fins, specifically, is often key to mitigating flow challenges through shape and position changes [8,13,15,17,19–21].

The pectoral fins of station-holding perciforms such as blennies (Family Blennidae), hawkfish (Family Cirrhitidae), scorpaenoid fishes such as sea robins, scorpionfishes and rockfishes (Suborder Scorpaenoidei) and cottoid fishes including sculpins and poachers (Suborder Cottoidei) often possess a regionalized design [11,18,20,22–26]. The specialized ventral aspect of pectoral fins contacts the substrate similar to claws [18,23,24], while the more typical dorsal aspect is positioned to generate negative lift, pushing the fish toward the substrate [1,8,15]. Although the link between fin regionalization and station-holding in benthic fishes is strong, other possible mechanisms may be employed. For example, rheophilic, freshwater Ostariophysian fishes lack regionalized fins but exhibit microscopic, cornified, often elongate epithelial projections on the ventral surfaces of their paired fins, termed ‘unculi’ [27–29]. These features are characteristic of this group and function in increasing friction and/or adhesion with the substrate [30], as well as providing protection from mechanical abrasion or aiding in proprioception and/or chemoreception [27,31]. Additionally, benthic darters can maintain position in flow simply by taking advantage of hydrodynamic interactions alone without the presence of regionalized fins [1,17,18,28]. Therefore, fishes likely employ a subset of possible traits to combat the forces imparted by fast or turbulent flows, and additional functional mechanisms may be present among station-holding fishes that have not been previously considered.

Despite the interest in morphological specialization for station-holding in sculpins specifically [2,8,11,20,23–26,32–34], existing studies primarily focus on macroscopic characteristics that aid in position maintenance. We used scanning electron microscopy (SEM) to describe intra- and interspecific variation in microscopic projections on the ventral surface of pectoral and pelvic fin pads of four species of marine sculpin. For the first time, we describe raised epidermal projections similar to those described in other fishes, suggesting that such modifications may be more broadly present in benthic fishes than what has been previously described.

2. Material and methods

Three specimens from each of four species within the Superfamily Cottoidei were examined: intertidal *Artedius lateralis* and *Oligocottus maculosus*, and subtidal *Myoxyccephalus polyacanthocephalus* and *Leptocottus armatus* (figure 1, electronic supplementary material, table S1). Subtidal species represent outgroups to intertidal species, as well as the primary family Psychrolutidae, within which three of four species are contained. Phylogenetic designations follow Smith & Busby [35]. These species were chosen because they represent four different genera, show variation in contrasting streamlined or gibbose body profiles within each habitat, and individuals could be collected at similar body sizes from adjacent shoreline habitats. Although subtidal fish used in this study were juveniles, their presence within a short distance of intertidal habitats suggests they would have a higher likelihood of encountering similar flow demands as intertidal species, including the potential to get trapped in tidepools. Therefore, if there are differences compared to the adults of subtidal species, we expect that juveniles would show more exaggerated flow-related traits.

Individuals of each species were collected on San Juan Island, WA during the summer of 2022. Following behavioural studies not included here, fish were euthanized via immersion in tricaine methanesulfonate (MS-222), fixed in 10% formalin for 48 h and stored in 70% ethanol. Two specimens were selected from each species based on the similarity of body size and preservation state of fins. One additional individual per species was provided by the University of Washington Burke Museum ichthyology collection (electronic supplementary material, table S1). These individuals were examined to broaden the temporal and spatial representation of samples. Museum specimens were selected to represent recent collections from sites within the Salish Sea and Puget Sound but at a distance from Friday Harbor, and at similar body sizes to the specimens collected in 2022. Unfortunately, the epidermal quality of specimens obtained from the Burke Museum was poor (electronic supplementary material, figure S1), rendering data collection difficult. Data from museum specimens were excluded from further analysis, though they showed qualitative similarities to freshly collected specimens.

Right pectoral and pelvic fins were dissected at the base, dehydrated in 100% acetone, critical point dried and sputter coated with a 10–12 nm gold coating. The left pectoral fin was used for specimen Alat07 because the right side was previously dissected. Samples were mounted to facilitate imaging the ventral surface of fin rays in a plane perpendicular to the electron beam. Imaging was performed with a Hitachi S3000N or Thermo Scientific Scios 2 DualBeam SEM. Images (Hitachi: 1280 × 900 pixels; Scios 1536 × 1094 pixels) were taken at 1500× at the approximate midpoint along the free margin of each of the five ventral-most regionalized pectoral fin rays and the first pelvic fin ray. Some fin rays required multiple images because of the three-dimensional complexity of fin ray shape after critical point drying and the limits of tilting the stage on the SEM. Additional images were taken at lower magnifications to verify orientation and document other nearby features, but these were not used for analysis.

Following imaging, FIJI (<https://fiji.sc/>) was used to divide each picture into quadrants of 1000 µm each to quantify cell density and projected surface area from at least four quadrants per fin ray (figure 2A). These parameters were chosen because many biomechanical (e.g. adhesion and friction) and physiological (e.g. chemo- or mechanoreception) functions are density- and area-dependent and thus may differ between species that exploit habitats with contrasting conditions. For example, recent work with bio-inspired suction discs (inspired by the distribution of clingfish papillae) found that varying the area and density of hexagonal pads (synonymous and similar in form to the projected area and cell density measured here) resulted in significant changes in shear adhesive performance [36]. Cell density was calculated by counting the total number of cells per quadrant, including partial cells along the edges. The surface of cells contained epidermal microstructures with aspect ratios (length/width) greater than 1 and are thus hereafter referred to as fibrils. Projected surface area (hereafter referred to as projected area) of the fibrillar region of cells was determined by tracing the outline of the protruding portion (containing only the fibrils) of three cells per quadrant. Total cell area was not measured because the smaller, fibrillar region of cells is the feature most likely specialized in biomechanical or sensory function (i.e. making contact with the substrate or surrounding medium). Cells for projected area measurements were selected based on the edges of the fibrillar region being visible, perpendicular to the camera view and to encompass the shape and size variation of protrusions within the quadrant. Density and area measures were averaged across quadrants and images for each fin ray to obtain single mean values per fin ray for each individual.

To explore the morphometrics of the fibrils covering the surfaces of cells as well as the width of the channels between the projected area of cells, we selected the single highest-quality image of the pectoral fin ray surface for each individual at 1500× magnification and made estimates of fibril density, diameter and length, as well as channel width (figure 2B,C). Pelvic fins were excluded from these measurements because of lower image quality. Three projected areas (or cells) per image per specimen and three fibrils per cell were selected for measurement. Fibril density was estimated by counting the number of fibrils within a specified area (usually projected area, except for *L. armatus*, where cells were indistinguishable). Fibril diameter was estimated by measuring the diameter of the fibril's tip, while fibril length was estimated by measuring the length of a line from the base to the tip of the fibril (figure 2B). Fibril lengths are likely underestimated as it was difficult to orient the projections perfectly perpendicular to the electron beam. Channel width was measured as the linear distance between groups of fibrils (figure 2C). Repeat measures across cells or fibrils were averaged per individual and then an average value ± s.e. was calculated per species.

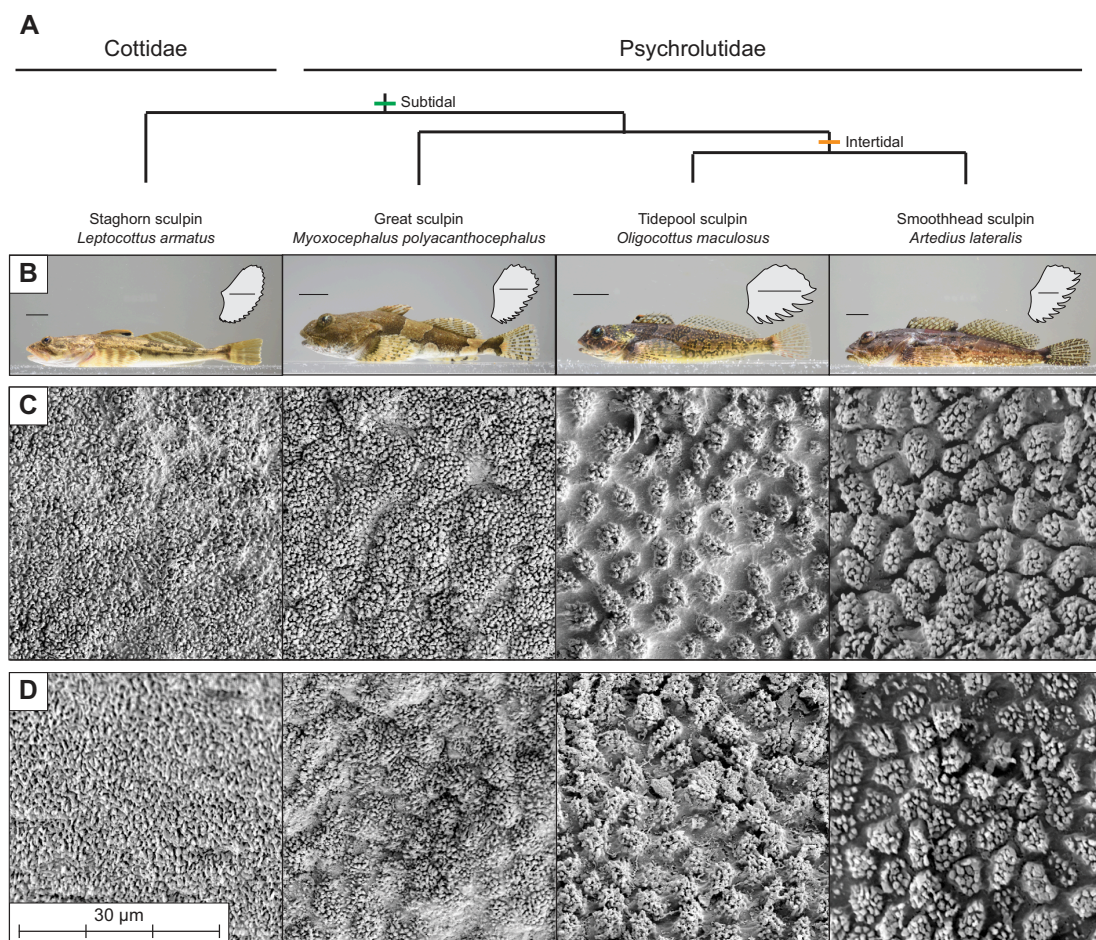


Figure 1. Overview of study species and results. (A) Phylogenetic relationships of study species following Smith & Busby [35]. (B) Lateral profile images of representative species from subtidal and intertidal habitats. Images show fish collected in Summer 2022 but are not necessarily the individuals used in this work. Inset shows a tracing of a mounted pectoral fin of the individual photographed. Tracings are scaled to the same height. Scale bars are 1 cm. (C, D) Representative scanning electron microscopy (SEM) images of a (C) pectoral and (D) pelvic fin rays of each species. Epidermal cells adorned with microscopic, fibrillar projections are present on all species. Channels separating projected areas of epidermal cells are most defined in the two intertidal species.

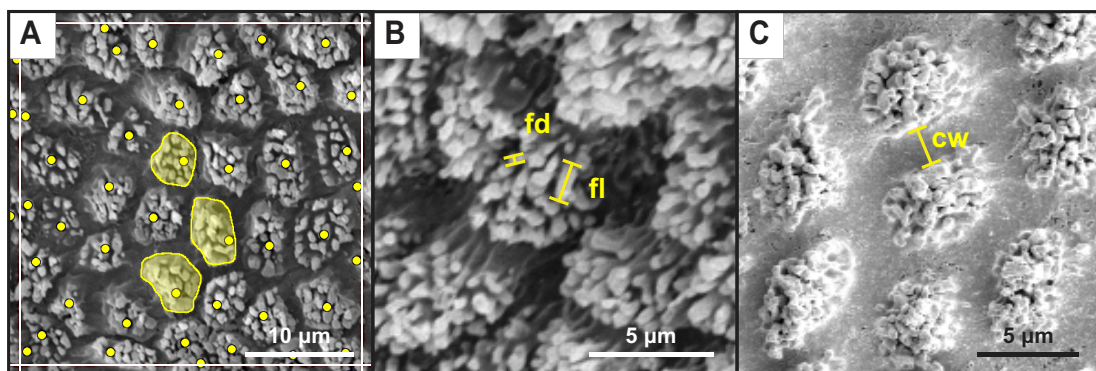


Figure 2. Example image analyses. (A) Each grid square (bordered by white lines, only 1 shown) is $1000 \mu\text{m}^2$. Within each quadrant, cells were counted (yellow dots) and three cells/projected areas per quadrant were measured for area (yellow filled shapes). (B) Linear measures of fibril length (fl) and fibril diameter (fd). (C) Linear measure of channel width (cw).

3. Results

All four sculpin species examined displayed a ventral fin ray pad with a microtextured epidermal surface composed of fibrillar projections along the free margin of pectoral and pelvic fin rays (figure

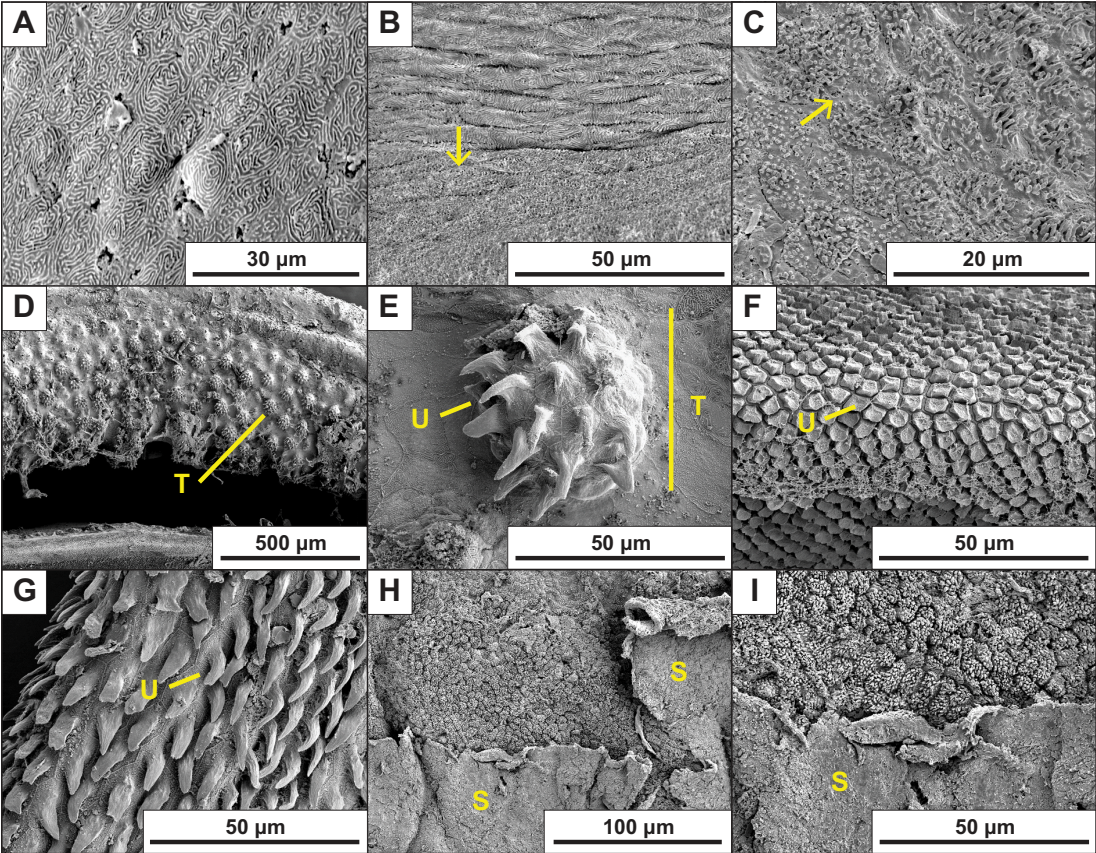


Figure 3. Representative images demonstrating additional observations. (A) Typical epidermis from the dorsal region of the pectoral fin of *A. lateralis*. (B, C) The transitional zone between typical epidermis near the pectoral fin webbing and modified epidermis on the edge of the ventral fin pad of (B) *O. maculosus* and (C) *A. lateralis*. Arrows point toward the ventral direction. (D–G) Comparative images of the Ostariophysian *Paracrossochilus vittatus*: (D, E) multicellular unciliferous tubercle on the rostral cap, (F) hexagonal uncili on the inner lip and (G) typical elongate uncili on the anterior pelvic fin ray. The specimen was a fresh preparation of a fish acquired in the aquarium trade following the methods described for sculpins. (H, I) Skin sloughing observed in *M. polyacanthocephalus*. S, sloughing epidermal tissue; T, multicellular tubercle; U, unicellular uncili.

Table 1. Mean cell and fibril morphometrics across sculpin species examined, as well as estimates and ranges for comparative outgroups. Values from images in figure 3 are estimates as images are not consistently perpendicular to the camera. Data are reported as mean \pm s.e.

| species | cell density (mm ⁻²) | projected area (µm ²) | fibril density (µm ⁻²) | fibril length (µm) | fibril diameter (µm) | channel width (µm) |
|--|-------------------------------------|--------------------------------------|---------------------------------------|-----------------------|-------------------------|--------------------|
| <i>Leptocottus armatus</i> | — | — | 1.65 \pm 0.11 | 1.31 \pm 0.07 | 0.58 \pm 0.04 | — |
| <i>Myoxocephalus polyacanthocephalus</i> | 40,340 \pm 868 | 27.01 \pm 1.58 | 1.49 \pm 0.12 | 1.03 \pm 0.21 | 0.57 \pm 0.01 | 0.71 \pm 0.03 |
| <i>Oligocottus maculosus</i> | 43,121 \pm 2,100 | 16.16 \pm 0.74 | 1.88 \pm 0.003 | 1.54 \pm 0.20 | 0.49 \pm 0.05 | 1.97 \pm 0.16 |
| <i>Artedius lateralis</i> | 40,122 \pm 2,003 | 21.52 \pm 1.37 | 1.20 \pm 0.03 | 2.13 \pm 1.05 | 0.65 \pm 0.007 | 1.59 \pm 0.40 |
| Ostariophysian fishes (figure 3) [27,29,30] | 5,000–74,000 | 7–29 | — | 10–50 | 1–3 | 0.17–8.38 |
| clingfish [37–39] | 2,250 | 10,000 | — | 3–15 | 0.2–1.5 | 8 |
| tree frogs [40–42] | 10,000 | 100 | — | 200–300 | 300–500 | 1–2 |

1). In some species, the fibrils were arranged in groups separated by distinct channels, creating a more complex, hierarchically textured surface. In contrast, the typical reticulated epidermal surface was present in areas located on the fin web, at the base of the fins, on the dorsal region of pectoral fins and on non-primary pelvic fin rays (figure 3). The two intertidal species (*A. lateralis* and *O. maculosus*) displayed the most prominent and easily distinguishable microtextured cells separated by channels up to approximately 2 μm in width (table 1). Subtidal *M. polyacanthocephalus* had intermediate features that were distinguishable in some images and on some fin rays but were usually less prominent compared to the intertidal species, and channels were narrower compared to the intertidal species (table 1). Subtidal *L. armatus* had the least well-defined features, rendering cell morphometrics (cell density, projected area and channel width) unable to be measured.

Overall, there was substantive variation in cell morphometrics within and across species (table 1, electronic supplementary material, figure S2). Larger individuals generally had higher cell densities on their pectoral fins and lower densities on their pelvic fins (electronic supplementary material, figure S2). However, cell density was largely similar across species relative to the variation (table 1, electronic supplementary material, figure S2). On average, *M. polyacanthocephalus* had the greatest projected areas, especially on pectoral fins, and *O. maculosus* had the lowest projected areas (table 1, electronic supplementary material, figure S2). No obvious patterns were observed when comparing across pectoral fin rays relative to the variation.

Fibrils appeared to vary in density among species between approximately 1–2 fibrils per μm^2 (table 1). Subtidal species tended to be intermediate to intertidal species, which possessed the greatest (*O. maculosus*) and least (*A. lateralis*) dense fibrils. In contrast, *A. lateralis* had the greatest fibril length of just over 2 μm but also had the most variable fibril length compared to the other species. The smallest fibril length was just over 1 μm in *M. polyacanthocephalus*. Fibril diameter was, on average, similar across all species (table 1).

4. Discussion

Sculpins are often used as a model of station-holding morphology, behaviour and function in benthic fishes without discrete attachment devices [8,11,20,26,34,43]. We documented microscopic fibrillar projections on the ventral paired fin pads of marine sculpins that have not been previously considered or observed, despite an examination of fin ray histology in benthic fishes that included a freshwater sculpin species [28]. We hypothesize that these features are homologous to and elaborations of the typical microridges observed on epidermal tissue (figure 3A; reviewed in [44]) based on the presence of morphological transitional states near the edges of the ventral fin pads (figure 3B,C). Microridges are common features of vertebrate epidermal tissues, bearing anatomical and functional similarity to microvilli [44,45] but with characteristically short heights rarely more than 1 μm [45,46]. Microridges are initially formed as individual ‘pegs’ or ‘puncta’ that continuously elongate and divide laterally through fission and fusion dynamics as a result of changes in membrane tension and compression [44,47–50]. The resulting topography is highly plastic, shifting through the life of the cell [45,47,49] and responding to factors such as cell division, epidermal damage, hormones, environmental salinity and even swimming activity level and exposure to wear [44,45,47,49–51]. Most authors suggest that their function is in mucous retention (citing [52]). Other non-mutually exclusive functions may include reinforcement of integument, protection from abrasion, increasing cell surface area, serving as an F-actin reserve and facilitating signal transduction in response to external stimuli [44,47,50]. Given the plasticity of microridges within an individual, it seems feasible that the fibrillar projections observed on sculpin ventral fin pads may represent developmental modifications in the growth patterns of microridges. We suggest the descriptor ‘filamentous microridges’ for these features, which was used to describe a similar epidermal texture on hillstream fishes [53]. However, this terminology is contingent upon the support of structural homologies with microridges in future research.

Similar modified epidermal projections have been described on the fins and mouthparts of river-dwelling Ostariophysian fishes such as loaches and algae eaters, where they are termed ‘unculi’ [27–29]. These features are single, often hook-like, keratinous projections that extend from the surface of an epidermal cell in areas that contact the substrate (figure 3E–G); however, morphology is variable and up to eight types have been described within Loricariid catfishes, with apparent evolutionary lability [29]. They are exaggerated in more rheophilic species [28,29] and interlock with the substrate in hillstream loaches [30]. The filamentous microridges we observed in sculpins appear to be morphologically similar to the unculi on the ventral surface of the pectoral and pelvic fins of Ostariophysian

fishes (table 1). Specifically, a single, projected unculus is separated by a distinct channel or non-projected region (figure 3F) [27]. Additionally, in some cases, uncini can have additional, smaller surface topographical features [27] similar in hierarchy to sculpin fibrils protruding from a larger, clumped structure. However, uncini on paired fins (figure 3G) are not often fibrillar [27,28] and are considerably wider and longer than the fibrils observed in sculpins. Further, in Ostariophysians, a single unculus adorns each cell, while multiple fibrillar projections appear to emanate from a single cell in sculpins. However, some uncini cluster together forming multicellular tubercles with discrete channels separating the clusters, as observed on the rostral cap of *Paracrossocheilus* sp. and *Garra gotyla* [27] (figure 3D,E). These bear a resemblance to the structures we observed in sculpins except that they are multicellular clusters of unculiferous cells in these fishes and unicellular clusters of fibrillar projections in sculpins. The structures on these specimens that may bear the most resemblance to sculpins are the uncini on the inner lip of *P. vittatus* (figure 3F), which are unicellular and approximately 2 μm tall; however, they appear in a broad, plateau-like morphology, unlike sculpins. Long filamentous uncini were observed in four genera of Loricariid catfishes by other authors, but these individual structures are double the width and up to five times longer than the individual filaments observed on intertidal sculpins [29]. Reef blennies also show microstructures grossly similar to sculpins, referred to simply as a ‘cuticle’ [22,28,54,55], but it is unclear how scale and architecture compare to sculpins or Ostariophysian fishes. Uncini are often hypothesized to aid in friction enhancement. Recently, it has been demonstrated experimentally that interlocking of uncini increases conformation of ventral surfaces to rough substrates, aiding ventral suction disc performance in hillstream loaches [30]. Additionally, uncini-like structures improved the pull off-force of bio-inspired suction discs compared with discs without these structures [56]. Therefore, enhanced contact with the substrate and station-holding performance is likely a significant function of these epidermal modifications in Ostariophysian fishes.

Similar to uncini, we hypothesize that the filamentous microridges observed in sculpins enhance mechanical interactions with surfaces through friction and/or adhesion, thereby contributing to station-holding performance. These fibrils and their hierarchical organization in cells with discrete channels between them are remarkably similar in their basic form to features deemed essential in generating reversible attachment in the discrete attachment systems of other aquatic organisms (table 1). Distinct cells packed with fibrils are observed in both the adhesive suction disc of clingfish [37,38,57], which live in similar environments as the species studied here, and the adhesive toepads of tree and torrent frogs (reviewed in [49]). In clingfish, raised, polygonal ‘papillae’ are divided by narrow channels that line the edge of the suction disc. Papillae are composed of bundles of hierarchical filaments that branch into nanoscopic rods [37–39]. In clingfish, adhesion persists even when the suction cup seal is broken, suggesting that papillae take advantage of multiple adhesive mechanisms [38]. The adhesive toepads of tree and torrent frogs are also adorned with raised, polygonal epidermal cells separated by narrow channels and are composed of nanopillars that also have discrete channels separating them [40]. The configuration of sculpin epidermal cells appears to be most similar to that of tree and torrent frogs (with similar channel widths but smaller projected areas and greater densities) with fibrils that are more similar to the nanoscopic rods observed in clingfish (table 1). The large differences in cellular configuration (i.e. projected area and cell density) between these groups may represent different approaches to resolving the area-density tradeoff with different morphological and/or developmental constraints rather than obvious functional differences. If cell area is constrained to small values in sculpins, then cell density must increase to cover the same epidermal surface area and vice versa in other taxa. Such observations have been made in the discrete attachment systems of other vertebrates, such as geckos and anoles, which achieve similar adhesive performance through different size and density configurations of their adhesive fibrils [58].

The epidermal cells and fibrils in sculpins likely operate using similar principles as observed or hypothesized in other taxa with discrete attachment systems. The fibrils in sculpins may contact the surface directly and interdigitate with its asperities in a process known as mechanical interlocking, similar to how the claws and setose filaments of rheophilic insects, loach uncini, clingfish papillae and tree frog epidermal cells may interact with surfaces [6,29,56,59,60]. Alternatively, or additionally, projections may increase friction with the substrate through adhesive interactions [29]. Fish epidermis is typically coated in mucus, and perhaps especially so for mostly scaleless fishes such as sculpins [61]. Thus, increases in surface area by microscopic fibrils may enhance adhesion with the substrate via capillary or viscous forces, similar to what has been suggested in clingfish papillae or tree frog toepads ([38], reviewed in [40]). Channels between epidermal cells evident in intertidal sculpins may facilitate evacuation of excess mucus from the interface, decreasing the separation distance between the projections and substrate and increasing adhesive stress, similar to the mechanism observed in

the papillae of clingfish suction discs [38] and unculi-like projections of a bio-inspired suction cup [56]. These hypothesized mechanisms, however, will require future biomechanical work exploring the tribological properties (adhesion, friction and wear) of sculpin fin rays.

The microstructures observed in sculpins may also serve other or non-mutually exclusive functions. Ostariophysian unculi, for example, have been implicated in chemo- or mechanoreception, feeding, mechanical protection or antifouling [27,30,62,63]. Sensory functions are unlikely in sculpin structures, as sensory receptors such as tastebuds are larger, multicellular or with distinct morphology unlike what is observed here [28,31,64,65]. Additionally, sensory receptors and unculiferous cells occur in non-overlapping locations in Ostariophysian fishes [28], suggesting mutually exclusive functions. The presence of shorter, more robust unculi on the lips of fishes such as algae eaters (figure 3F) suggests that mechanical abrasion may assist with feeding [27]. However, this is less likely to be an important function of fin-based epidermal microstructures, especially in suction-feeding fish such as sculpins [66–68]. Epidermal features may also provide mechanical protection from scrapes on rough substrates or from pathogens or other parasites. On some sculpin specimens, we observed sloughing of the outer epidermal layer (figure 3H,I, electronic supplementary material, figure S3) suggesting that the outermost layer is shed periodically. We made a similar observation more recently on the pectoral fins from freshly euthanized *O. maculosus* specimens, where these folds appeared to have a different consistency than mucus and support the conclusion that this tissue is epidermal (electronic supplementary material, figure S3). Skin sloughing has also been observed in the sculpin *Blepsias bilobus* in response to epibiotic growth [61] and in the unculiferous tissues of riverine Ostariophysian fishes, where the most well-developed unculi are present on the outermost layer following keratinization [28]. Epidermal microstructures are also reinforced in blennies [55,69], suggesting resistance to wear. In sculpins, the outer layer appears less developed and potentially worn (figure 3H,I), suggesting that epidermal features may not be reinforced in sculpins, but further work is needed to assess composition. In either case, microstructural wear likely reduces the potential of these structures to enhance surface interactions. Thus, replacement through sloughing would be beneficial for both maintaining mechanical interactions and protecting deeper tissue. So far, we have not seen functional tests of these additional hypotheses in any fish known to have epidermal microstructures, suggesting a new area in need of future inquiry.

We found considerable variation in the configuration and morphometrics of both the epidermal cells and fibrillar projections in marine sculpins that suggest a greater functional capacity in intertidal compared with subtidal species. Most notably, the epidermal cells bearing fibrillar projections appear to be separated by discrete channels that are widest in the environmentally more extreme intertidal species. Wider channels in intertidal fishes may facilitate mucus evacuation for enhanced contact with the substrate through mechanical or adhesive interactions relative to subtidal fishes [38], which may be more critical in the chaotic intertidal zone. The intertidal species also appear to have smaller projected areas compared to the subtidal *M. polyacanthocephalus*, likely a consequence of the wider channels but similar cell densities. Preliminarily, fibrils appear to be longer in the intertidal species compared to the subtidal species, which may increase surface area for adhesive interactions or enable enhanced conformation with surface asperities through differential bending properties [29,30,38]. However, these differences in the morphometrics of the fibrils should be considered preliminary as specimen image quality and conditions were not ideal for these measures. For example, projection densities are likely underestimated and projection diameters are likely overestimated because fibrils may be coated in residual mucus, rendering it difficult to know whether measures were of multiple fibrils clumped together or fibrils with high morphological variability. Fibril lengths are likely underestimated as it was difficult to orient the projections perfectly perpendicular to the electron beam. Future work will need to optimize specimen preparation or employ different imaging techniques (e.g. transmission electron microscopy) to better estimate morphometrics of these structures. Additionally, a wider range of species and individuals should be examined to further describe the potential specialization of intertidal species. Although morphological differences between species may be adaptations to the dynamic and extreme intertidal zone, invasion into intertidal habitats is a derived condition among marine sculpins that occurred once [2,35,70–72]. Thus, it is unclear whether these microscopic traits are associated with evolutionary history, environmental demands or some combination of these factors. Nevertheless, our findings inspire new questions regarding how these features complement other adaptations for benthic station-holding in sculpins, where traits such as small body size, gripping fin rays and/or negative lift generation have been described as primary mechanisms [2,8,11,18,20,24,26,33,72–74].

In this work, we provide new morphological descriptions of epidermal microstructures carried on the ventral surface of paired fin rays of four species of marine sculpins. Our research represents

a solid morphological foundation for future lines of inquiry spanning the fields of functional morphology, biomechanics, behaviour, ecology and evolution. Specifically, our observations suggest a new, potentially convergent, example of a morphological feature of strong similarity to structures hypothesized or demonstrated to enhance friction and/or adhesion in other aquatic vertebrates. This result represents a novel insight into the natural history of sculpins that is broadly applicable to further studies of organismal performance, attachment systems, convergent evolution and bio-inspired attachment. Our findings stretch the boundaries of our knowledge of benthic station-holding in fishes and highlight the need for inclusion of more taxa, including sculpins, in future research on friction enhancement and adhesion in biological systems.

Ethics. All procedures involving the collection and housing of animals prior to preservation were approved by the Institutional Animal Care and Use Committee at the University of Washington (protocol #4238-18).

Data accessibility. All original and analysis images and data are available on Dryad [75]. Alcohol preserved specimens and SEM preparations will be maintained in the Kane Lab at the University of Louisiana at Lafayette.

Supplementary material is available online [76].

Declaration of AI use. We have not used AI-assisted technologies in creating this article.

Authors' contributions. E.A.K.: conceptualization, data curation, formal analysis, funding acquisition, investigation, methodology, project administration, resources, supervision, validation, visualization, writing—original draft, writing—review and editing; A.M.G.: conceptualization, formal analysis, investigation, methodology, validation, visualization, writing—original draft, writing—review and editing; S.Y.: conceptualization, investigation, writing—review and editing; L.A.H.: conceptualization, investigation, methodology, resources, visualization, writing—review and editing; T.P.: methodology, resources, writing—review and editing.

All authors gave final approval for publication and agreed to be held accountable for the work performed therein.

Conflict of interest declaration. We declare we have no competing interests.

Funding. Funding was provided by the University of Louisiana at Lafayette startup funds (EAK), a Friday Harbor Lab New Faculty Fellowship (EAK), and the Louisiana Board of Regents (contract number LEQSF(2023-26)-RD-A-24, EAK).

Acknowledgements. The authors thank Friday Harbor Laboratories and the Karel F. Liem Bioimaging Facility as well as Callie Crawford and Kayla Hall for their assistance with preliminary work where these microscopic traits in sculpins were discovered. We also thank undergraduate Kelsey Fell, who assisted with initial imaging and data analysis.

References

- Carlson RL, Lauder GV. 2011 Escaping the flow: boundary layer use by the darter *Etheostoma tetrazonum* (Percidae) during benthic station holding. *J. Exp. Biol.* **214**, 1181–1193. (doi:10.1242/jeb.051938)
- Buser TJ, Burns MD, López JA. 2017 Littorally adaptive? Testing the link between habitat, morphology, and reproduction in the intertidal sculpin subfamily *Oligocottinae* (Pisces: Cottoidea). *PeerJ* **5**, e3634. (doi:10.7717/peerj.3634)
- Egan JP, Buser TJ, Burns MD, Simons AM, Hundt PJ. 2021 Patterns of body shape diversity and evolution in intertidal and subtidal lineages of combtooth blennies (Blenniidae). *Integr. Org. Biol.* **3**, obab004. (doi:10.1093/iob/obab004)
- Dodou D, Breedveld P, de Winter JCF, Dankelman J, van Leeuwen JL. 2011 Mechanisms of temporary adhesion in benthic animals. *Biol. Rev.* **86**, 15–32. (doi:10.1111/j.1469-185x.2010.00132.x)
- Stewart RJ, Ransom TC, Hlady V. 2011 Natural underwater adhesives. *J. Polym. Sci. B* **49**, 757–771. (doi:10.1002/polb.22256)
- Ditsche P, Summers AP. 2014 Aquatic versus terrestrial attachment: Water makes a difference. *Beilstein J. Nanotechnol.* **5**, 2424–2439. (doi:10.3762/bjnano.5.252)
- Delroisse J, Kang V, Gouvenaux A, Santos R, Flammang P. 2023 Convergent evolution of attachment mechanisms in aquatic animals. In *Convergent evolution: animal form and function* (eds VL Bels, AP Russell), pp. 523–557. Cham: Springer International Publishing. (doi:10.1007/978-3-031-11441-0_16)
- Webb PW. 1989 Station-Holding by three Species of Benthic Fishes. *J. Exp. Biol.* **145**, 303–320. (doi:10.1242/jeb.145.1.303)
- Macdonnell AJ, Blake RW. 1990 Rheotaxis in *Otocinclus* sp. (Teleostei: Loricariidae). *Can. J. Zool.* **68**, 599–601. (doi:10.1139/z90-086)
- Arnold GP, Webb PW, Holford BH. 1991 The role of the pectoral fins in station-holding of Atlantic salmon Parr (*Salmo Salar* L.). *J. Exp. Biol.* **156**, 625–629. (doi:10.1242/jeb.156.1.625)
- Webb PW, Gerstner CL, Minton ST. 1996 Station-Holding by the Mottled Sculpin, *Cottus bairdi* (Teleostei: Cottidae), and Other Fishes. *Copeia* **1996**, 488–493. (doi:10.2307/1446874)
- Gerstner CL, Webb PW. 1998 The station-holding performance of the plaice *Pleuronectes platessa* on artificial substratum ripples. *Can. J. Zool.* **76**, 260–268. (doi:10.1139/cjz-76-2-260)
- Wilga CD, Lauder GV. 2001 Functional morphology of the pectoral fins in bamboo sharks, *Chiloscyllium plagiosum*: Benthic vs. Pelagic station-holding. *J. Morphol.* **249**, 195–209. (doi:10.1002/jmor.1049)

14. Parsons GR, Jeffrey Hoover J, Jack Killgore K. 2003 Effect of pectoral fin ray removal on station-holding ability of shovelnose sturgeon. *North Am. J. Fish. Manag.* **23**, 742–747. (doi:10.1577/m02-088)
15. Coombs S, Anderson E, Braun CB, Grosenbaugh M. 2007 The hydrodynamic footprint of a benthic, sedentary fish in unidirectional flow. *J. Acoust. Soc. Am.* **122**, 1227–1237. (doi:10.1121/1.2749455)
16. Gerstner CL. 2007 Effect of oral suction and other friction-enhancing behaviors on the station-holding performance of suckermouth catfish (*Hypostomus* spp.). *Can. J. Zool.* **85**, 133–140. (doi:10.1139/z06-199)
17. Carlson RL, Lauder GV. 2010 Living on the bottom: Kinematics of benthic station-holding in darter fishes (Percidae: Etheostominae). *J. Morphol.* **271**, 25–35. (doi:10.1002/jmor.10776)
18. Hale ME, Galdston S, Arnold BW, Song C. 2022 The Water to land transition submerged: multifunctional design of pectoral fins for use in swimming and in association with underwater substrate. *Integr. Comp. Biol.* **62**, 908–921. (doi:10.1093/icb/icac061)
19. Fulton CF, Bellwood DB, Wainwright PW. 2001 The relationship between swimming ability and habitat use in wrasses (Labridae). *Mar. Biol.* **139**, 25–33. (doi:10.1007/s002270100565)
20. Taft NK, Taft BN. 2012 Functional implications of morphological specializations among the pectoral fin rays of the benthic longhorn sculpin. *J. Exp. Biol.* **215**, 2703–2710. (doi:10.1242/jeb.063958)
21. Binning SA, Ros AFH, Nusbaumer D, Roche DG. 2015 Physiological plasticity to water flow habitat in the damselfish, *Acanthochromis polyacanthus*: linking phenotype to performance. *PLoS One* **10**, e0121983. (doi:10.1371/journal.pone.0121983)
22. Brandstätter R, Misof B, Pazmandi C, Wagner GP. 1990 Micro-anatomy of the pectoral fin in blennies (Blenniini, Blennioidea, Teleostei). *J. Fish Biol.* **37**, 729–743. (doi:10.1111/j.1095-8649.1990.tb02537.x)
23. Gosline WA. 1994 Function and structure in the paired fins of scorpaeniform fishes. *Environ. Biol. Fishes* **40**, 219–226. (doi:10.1007/bf00002508)
24. Taft NK, Lauder GV, Madden PGA. 2008 Functional regionalization of the pectoral fin of the benthic longhorn sculpin during station holding and swimming. *J. Zool.* **276**, 159–167. (doi:10.1111/j.1469-7998.2008.00472.x)
25. Taft NK. 2011 Functional implications of variation in pectoral fin ray morphology between fishes with different patterns of pectoral fin use. *J. Morphol.* **272**, 1144–1152. (doi:10.1002/jmor.10970)
26. Kane EA, Higham TE. 2012 Life in the flow lane: differences in pectoral fin morphology suggest transitions in station-holding demand across species of marine sculpin. *Zoology* **115**, 223–232. (doi:10.1016/j.zool.2012.03.002)
27. Roberts TR. 1982 Unculi (horny projections arising from single cells), an adaptive feature of the epidermis of ostariophysan fishes. *Zool. Scr.* **11**, 55–76. (doi:10.1111/j.1463-6409.1982.tb00518.x)
28. Conway KW, Lujan NK, Lundberg JG, Mayden, RL, Siegel DS. 2012 Microanatomy of the paired-fin pads of ostariophysan fishes (Teleostei: Ostariophysi). *J. Morphol.* **273**, 1127–1149. (doi:10.1002/jmor.20049)
29. Krings W, Konn-Vetterlein D, Hausdorf B, Gorb SN. 2023 Holding in the stream: convergent evolution of suckermouth structures in *Loricariidae* (Siluriformes). *Front. Zool.* **20**, 37. (doi:10.1186/s12983-023-00516-w)
30. Chuang YC, Chang HK, Liu GL, Chen PY. 2017 Climbing upstream: multi-scale structural characterization and underwater adhesion of the Pulin river loach (*Sinogastromyzon puliensis*). *J. Mech. Behav. Biomed. Mater.* **73**, 76–85. (doi:10.1016/j.jmbbm.2017.01.029)
31. Abd-Elhafeez HH, Mokhtar DM. 2014 Comparative morphological study of lips and associated structures of two algal grazer fish. *J. Adv. Microsc. Res.* **9**, 275–284. (doi:10.1166/jamr.2014.1221)
32. White JL, Harvey BC. 1999 Habitat Separation of Prickly Sculpin, *Cottus asper*, and Coastrange Sculpin, *Cottus aleuticus*, in the Mainstem Smith River, Northwestern California. *Copeia* **1999**, 371–375. (doi:10.2307/1447482)
33. Kerfoot JR, Schaefer JF. 2006 Ecomorphology and habitat utilization of *Cottus* species. *Environ. Biol. Fishes* **76**, 1–13. (doi:10.1007/s10641-006-9000-0)
34. Veillard MF, Ruppert JLW, Tierney K, Watkinson DA, Poesch M. 2017 Comparative swimming and station-holding ability of the threatened Rocky Mountain Sculpin (*Cottus* sp.) from four hydrologically distinct rivers. *Conserv. Physiol.* **5**, x026. (doi:10.1093/conphys/cox026)
35. Smith WL, Busby MS. 2014 Phylogeny and taxonomy of sculpins, sandfishes, and snailfishes (Perciformes: Cottoidei) with comments on the phylogenetic significance of their early-life-history specializations. *Mol. Phylogenetics Evol.* **79**, 332–352. (doi:10.1016/j.ympev.2014.06.028)
36. Hernandez AM, Sandoval JA, Yuen MC, Wood RJ. 2025 Bioinspired surface structures for added shear stabilization in suction discs. *Sci. Rep.* **15**, 960. (doi:10.1038/s41598-024-82221-0)
37. Wainwright DK, Kleinteich T, Kleinteich A, Gorb SN, Summers AP. 2013 Stick tight: suction adhesion on irregular surfaces in the northern clingfish. *Biol. Lett.* **9**, 20130234. (doi:10.1098/rsbl.2013.0234)
38. Sandoval JA, Sommers J, Peddireddy KR, Robertson-Anderson RM, Tolley MT, Deheyn DD. 2020 Toward bioinspired wet adhesives: lessons from assessing surface structures of the suction disc of intertidal clingfish. *ACS Appl. Mater. Interfaces* **12**, 45460–45475. (doi:10.1021/acsami.0c10749)
39. Huie JM, Wainwright DK, Summers AP, Cohen KE. 2022 Sticky, stickier and stickiest – a comparison of adhesive performance in clingfish, lumpsuckers and snailfish. *J. Exp. Biol.* **225**, b244821. (doi:10.1242/jeb.244821)
40. Langowski JKA, Dodou D, Kamperman M, van Leeuwen JL. 2018 Tree frog attachment: mechanisms, challenges, and perspectives. *Front. Zool.* **15**, 32. (doi:10.1186/s12983-018-0273-x)
41. Smith JM, Barnes WJonP, Downie JR, Ruxton GD. 2006 Structural correlates of increased adhesive efficiency with adult size in the toe pads of hyliid tree frogs. *J. Comp. Physiol. A* **192**, 1193–1204. (doi:10.1007/s00359-006-0151-4)
42. Endlein T, Barnes WJP. 2015 Wet adhesion in tree and torrent frogs. *Encyclopedia of Nanotechnology* **2**, 1–20. (doi:10.1007/978-94-007-6178-0_257-2)

43. Kanter MJ, Coombs S. 2003 Rheotaxis and prey detection in uniform currents by Lake Michigan mottled sculpin (*Cottus bairdi*). *J. Exp. Biol.* **206**, 59–70. (doi:10.1242/jeb.00056)
44. Depasquale JA. 2018 Actin Microridges. *Anat. Rec.* **301**, 2037–2050. (doi:10.1002/ar.23965)
45. Bereiter-Hahn J, Osborn M, Weber K, Vöth M. 1979 Filament organization and formation of microridges at the surface of fish epidermis. *J. Ultrastruct. Res.* **69**, 316–330. (doi:10.1016/s0022-5320(79)80050-7)
46. Sharma A, Anderson KI, Müller DJ. 2005 Actin microridges characterized by laser scanning confocal and atomic force microscopy. *FEBS Lett.* **579**, 2001–2008. (doi:10.1016/j.febslet.2005.02.049)
47. DePasquale JA. 2018 Microridges in *Cyprinus carpio* scale epidermis. *Acta Zool.* **99**, 158–168. (doi:10.1111/azo.12201)
48. Lu TQ, van Loon AP, Sagasti A. 2022 How to wrinkle a cell: emerging mechanisms of microridge morphogenesis. *Curr. Opin. Cell Biol.* **76**, 102088. (doi:10.1016/j.ccb.2022.102088)
49. Lam P, Mangos S, Green JM, Reiser J, Huttenlocher A. 2015 In vivo imaging and characterization of actin microridges. *PLoS One* **10**, e0115639. (doi:10.1371/journal.pone.0115639)
50. van Loon AP, Erofeev IS, Maryshev IV, Goryachev AB, Sagasti A. 2020 Cortical contraction drives the 3D patterning of epithelial cell surfaces. *J. Cell Biol.* **219**, e201904144. (doi:10.1083/jcb.201904144)
51. Mittal S, Mittal AK. 2004 Operculum of peppered loach, *Lepidocephalichthys guntea* (Hamilton, 1822) (Cobitidae, Cypriniformes): a scanning electron microscopic and histochemical investigation. *Belg. J. Zool.* **134**, 9–15.
52. Sperry DG, Wassersug RJ. 1976 A proposed function for microridges on epithelial cells. *Anat. Rec.* **185**, 253–257. (doi:10.1002/ar.1091850212)
53. Joshi SH, Prieto-márquez A, Parker WC. 2011 A landmark-free method for quantifying biological shape variation. *Biol. J. Linn. Soc.* **104**, 217–233. (doi:10.1111/j.1095-8312.2011.01704.x)
54. Misof BY, Wagner GP. 1992 Regeneration in *Salarias pavo* (Blenniidae, Teleostei). *Anat. Embryol.* **186**, 153–165. (doi:10.1007/BF00174953)
55. Wagner GP, Lo J, Laine R, Almeder M. 1993 Chitin in the epidermal cuticle of a vertebrate (*Paralipophrys trigloides*, Blenniidae, Teleostei). *Experientia* **49**, 317–319. (doi:10.1007/bf01923410)
56. Zhou W, Wu X. 2022 Enhanced adhesion of synthetic discs with micro-patterned margins. *Biomimetics* **7**, 202. (doi:10.3390/biomimetics7040202)
57. Sandoval JA, Jadhav S, Quan H, Deheyn DD, Tolley MT. 2019 Reversible adhesion to rough surfaces both in and out of water, inspired by the clingfish suction disc. *Bioinspir. Biomim.* **14**, 066016. (doi:10.1088/1748-3190/ab47d1)
58. Garner AM, Wilson MC, Wright C, Russell AP, Niewiarowski PH, Dhinojwala A. 2021 The same but different: setal arrays of anoles and geckos indicate alternative approaches to achieving similar adhesive effectiveness. *J. Anat.* **238**, 1143–1155. (doi:10.1111/joa.13377)
59. Ditsche-Kuru P, Koop JHE, Gorb SN. 2010 Underwater attachment in current: the role of setose attachment structures on the gills of the mayfly larvae *Epeorus assimilis* (Ephemeroptera, Heptageniidae). *J. Exp. Biol.* **213**, 1950–1959. (doi:10.1242/jeb.037218)
60. Gorb SN. 2008 Biological attachment devices: exploring nature's diversity for biomimetics. *Phil. Trans. R. Soc. A* **366**, 1557–1574. (doi:10.1098/rsta.2007.2172)
61. Millstein J. 1998 Observations of skin sloughing in the crested sculpin (*Blepias bilobus*). *Copeia* **1998**, 743–745. (doi:10.2307/1447807)
62. Das D, Nag TC. 2004 Adhesion by paired pectoral and pelvic fins in a mountain-stream catfish, *Pseudocheneis sulcatus* (Sisoridae). *Environ. Biol. Fishes* **71**, 1–5. (doi:10.1023/b:ebfi.0000043148.23925.a7)
63. Das D, Nag TC. 2005 Structure of adhesive organ of the mountain-stream catfish, *Pseudocheneis sulcatus* (Teleostei: Sisoridae). *Acta Zool.* **86**, 231–237. (doi:10.1111/j.1463-6395.2005.00202.x)
64. Ytteborg E, Hansen ØJ, Høst V, Afanasyev S, Vieweg I, Nahrgang J, Krasnov A. 2020 Morphology, Transcriptomics and *in vitro* model of skin from Polar Cod (*Boreogadus Saida*) and Atlantic Cod (*Gadus Morhua*). *Fishes* **5**, 34. (doi:10.3390/fishes5040034)
65. Cordero H, Ceballos-Francisco D, Cuesta A, Esteban MÁ. 2017 Dorsal-ventral skin characterization of the farmed fish gilthead seabream (*Sparus aurata*). *PLoS One* **12**, e0180438. (doi:10.1371/journal.pone.0180438)
66. Norton SF. 1991 Capture success and diet of cottid fishes: the role of predator morphology and attack kinematics. *Ecology* **72**, 1807–1819. (doi:10.2307/1940980)
67. Norton SF. 1995 A functional approach to ecomorphological patterns of feeding in cottid fishes. *Environ. Biol. Fishes* **44**, 61–78. (doi:10.1007/bf00005907)
68. Kane EA, Higham TE. 2011 The integration of locomotion and prey capture in divergent cottid fishes: functional disparity despite morphological similarity. *J. Exp. Biol.* **214**, 1092–1099. (doi:10.1242/jeb.052068)
69. Wagner GP. 1994 Evolution and multi-functionality of the chitin system. In *Molecular ecology and evolution: approaches and applications* (eds B Schierwater, B Streit, GP Wagner, R DeSalle), pp. 559–577. Basel: Birkhäuser Basel. (doi:10.1007/978-3-0348-7527-1_33)
70. Ramon ML, Knape ML. 2008 Molecular support for marine sculpin (Cottidae; Oligocottinae) diversification during the transition from the subtidal to intertidal habitat in the Northeastern Pacific Ocean. *Mol. Phylogenet. Evol.* **46**, 475–483. (doi:10.1016/j.ympev.2008.04.002)
71. Mandic M, Todgham AE, Richards JG. 2009 Mechanisms and evolution of hypoxia tolerance in fish. *Proc. R. Soc. B* **276**, 735–744. (doi:10.1098/rspb.2008.1235)
72. Knape ML, Scales JA. 2013 Adaptive morphological shifts to novel habitats in marine sculpin fishes. *J. Evol. Biol.* **26**, 472–482. (doi:10.1111/jeb.12088)
73. Bogdanov BE. 2007 Variation of stone sculpin *Paracottus knerii* (Cottidae, Scorpaeniformes) of Baikal and waters of Baikal region. *J. Ichthyol.* **47**, 162–174. (doi:10.1134/s003294520702004x)
74. Ingram T. 2011 Speciation along a depth gradient in a marine adaptive radiation. *Proc. R. Soc. B* **278**, 613–618. (doi:10.1098/rspb.2010.1127)

75. Kane E, Garner A, Yadav S *et al.* 2025. Data from: Epidermal Microstructures on the Paired Fins of Marine Sculpins Suggest New Functional Hypotheses Supporting Benthic Station-Holding. Dryad (doi:[10.5061/dryad.9kd51c5sw](https://doi.org/10.5061/dryad.9kd51c5sw))
76. Kane E, Garner AM, Yadav SVK, Hume LA, Pesacreta T. 2025. Supplementary Material from: Epidermal Microstructures on the Paired Fins of Marine Sculpins Suggest New Functional Hypotheses Supporting Benthic Station-Holding. FigShare (doi:[10.6084/m9.figshare.c.7699939](https://doi.org/10.6084/m9.figshare.c.7699939))