

Research Article

A Study on the Therapeutic Efficacy of San Zi Yang Qin Decoction for Non-Alcoholic Fatty Liver Disease and the Underlying Mechanism Based on Network Pharmacology

Yiping Li ¹, Yang Liu ¹, Ming Yang ², Qianlei Wang ¹, Yu Zheng ³, Jiaoya Xu ¹, Peiyong Zheng ¹ and Haiyan Song ¹

¹Institute of Digestive Diseases, Longhua Hospital, Shanghai University of Traditional Chinese Medicine, 725 Wanping Road, Shanghai 200032, China

²Office of National Drug Clinical Trial, Longhua Hospital, Shanghai University of Traditional Chinese Medicine, Shanghai 200032, China

³Department II of Digestive Diseases, Longhua Hospital, Shanghai University of Traditional Chinese Medicine, Shanghai 200120, China

Correspondence should be addressed to Peiyong Zheng; zpychina@sina.com and Haiyan Song; songhy@126.com

Received 19 September 2020; Revised 16 December 2020; Accepted 22 December 2020; Published 8 January 2021

Academic Editor: Jianbo Wan

Copyright © 2021 Yiping Li et al. This is an open access article distributed under the Creative Commons Attribution License, which permits unrestricted use, distribution, and reproduction in any medium, provided the original work is properly cited.

Objective. This study aims to explore the therapeutic efficacy of San Zi Yang Qin Decoction (SZ) and its potential mechanism in the treatment of non-alcoholic fatty liver disease (NAFLD) based on network pharmacology and *in vivo* experiments. **Methods.** Effective chemicals and targets of SZ were searched in online databases, according to the drug-likeness of compounds and the binomial distribution of targets. A disease-target-chemical network was established using NAFLD-associated genes screened through GeneCards database, Gene Ontology (GO) terms, and Kyoto Encyclopedia of Genes and Genomes (KEGG) pathways. Furthermore, animal experiments were conducted to verify the efficacy and mechanism of SZ predicted by network pharmacology. The NAFLD mouse model was established with C57BL/6J mice fed with a high-fat diet for 22 weeks. The mice in the control group were fed with a chow diet. From the 23rd week, the NAFLD mice were treated with intragastric SZ or normal saline for 8 weeks. After the glucose tolerance was measured, the mice were sacrificed, followed by the collection of serum and liver tissues. Pathological changes in liver tissues were examined by H&E staining. Additionally, alanine aminotransferase (ALT), aspartate aminotransferase (AST), serum fast blood glucose, and insulin levels were detected. Expression levels of TNF- α of serum and liver tissues were determined by ELISA and qRT-PCR, respectively. Western blot was used to detect the activation of AKT in liver tissues. **Results.** A total of 27 effective compounds and 20 targets of SZ were screened. GO analysis uncovered a significant correlation between the targets of SZ and those of NAFLD. KEGG analysis presented the signaling pathways enriched in SZ and NAFLD, including NAFLD, TNF- α , and apoptosis pathways. The area under the curve of major GO and KEGG pathways indicated the potential role of SZ in improving NAFLD. **In vivo** experiments demonstrated that SZ significantly alleviated hepatosteatosis and inflammatory cell infiltration in liver tissues, reduced serum transaminases, and improved insulin resistance and glucose tolerance of NAFLD mice. The protein level of phospho-AKT was upregulated by SZ. Additionally, SZ treatment obviously impaired the TNF- α level in the serum and liver tissue of NAFLD mice. **Conclusions.** According to the network pharmacology analysis and *in vivo* experiments, SZ could have therapeutic efficacy for NAFLD. The mechanism mainly involves pathways relative to insulin resistance, TNF- α , and apoptosis. Our results provide a scientific basis for SZ in the clinical treatment of NAFLD.

1. Introduction

Non-alcoholic fatty liver disease (NAFLD) is a syndrome of hepatic excessive fat deposition that does not arise from alcohol abuse or other definite factors [1]. The spectrum of NAFLD includes non-alcoholic fatty liver (NAFL), non-alcoholic steatohepatitis (NASH), liver cirrhosis, and hepatocellular carcinoma. NAFLD is the most common liver disorder, with an incidence of about 20–33% in adults worldwide and up to 75% in the obese [2]. About 20% of NAFLD cases progress to NASH with liver inflammation and fibrosis, and even refractory liver diseases like cirrhosis and liver cancer [3]. It is believed that NAFLD develops through a multi-hit process. At first, excessive deposition of fatty acids leads to hepatosteatosis. As systematic insulin sensitivity decreases, lipolysis initiates in adipose tissues and de novo fatty acid increases in the liver, further aggravating hepatic lipid accumulation. With the aggravation of NAFLD, lipotoxicity gradually induces endoplasmic reticulum stress, oxidative stress, mitochondrial dysfunction, and endotoxin-induced release of inflammatory cytokines, etc. Eventually, the multi-hit process causes hepatocyte apoptosis, liver inflammation, and fibrosis [4].

Due to its complex pathogenesis, NAFLD still lacks effective treatments. In recent years, TCM has been widely applied in the treatment of NAFLD in China, with a definite efficacy featuring holistic treatment and multi-target regulation [5]. From the perspective of TCM theory, NAFLD is defined as a disease of “obesity, phlegm-fluid retention, and accumulation,” according to its clinical symptoms and signs [6]. In NAFLD, the dysfunction of the liver in regulating Qi flow and the spleen in transforming and transporting food essence contribute to the pathological accumulation of phlegm, dampness, and stagnation of Qi.

San Zi Yang Qin Decoction (SZ), initially reported in Han Shi Yi Tong, is composed of Raphani semen (Laifuzi in China), Perilla fructus (Zisuzi in China), and Sinapis semen (Baijiezi in China). Raphani semen can reduce food stagnation and monitor Qi to eliminate phlegm. Perilla fructus can descend Qi to carry away phlegm, smooth the bowel, and relieve cough and asthma [7]. Sinapis semen is acrid and warm, facilitates Qi, dissipates gatherings, and resolves phlegm. Their combination can treat diseases resulting from abnormal Qi flow and phlegm stasis, like cough, short breath, excessive phlegm, chest impediment, and lack of appetite. SZ is particularly effective for pulmonary diseases, such as intractable cough, chronic obstructive pneumonia disease (COPD), and chronic bronchitis [8, 9]. According to the TCM theory of “treatment based on syndrome differentiation,” and “homotherapy for heteropathy” during which the same therapy is administered for different diseases sharing the same pathogenesis, SZ has been recently applied in the treatment of diseases resulting from the stagnation of phlegm, dampness, and Qi, like NAFLD, hyperlipidemia, type 2 diabetes mellitus (T2DM), and breast hyperplasia [10–15]. However, *in vitro* and *in vivo* experiments and evidence-based analyses have not been carried out to validate the efficacy and interpret the related biological mechanisms of SZ [16, 17].

Network pharmacology is a novel research model based on systems biology and bioinformatics theories. It seeks to understand how drugs work from the system perspective and on the molecular level [18, 19]. Diverse active ingredients in TCM, especially TCM formulae, demonstrate complicated interactions, thus posing a great challenge to the research on TCM pharmacology. Accumulating evidence can reveal the efficacy and the underlying mechanism of a single active ingredient extracted from Chinese herbal medicine but is far from enough to explain those of the formulae, and the interactions between ingredients [20]. Network pharmacology has revolutionized TCM research from “one ingredient and one target” to “a complex of ingredients and a network of targets.” Network pharmacology intends to illustrate the mechanism of a formula based on a systemic analysis [21, 22] and assess its possible efficacy according to the correlation between one chemical and its targets [23].

Using the approach of network pharmacology, the present study aimed to screen out the effective chemicals in SZ, define their targets associated with NAFLD, and describe the underlying mechanisms using online databases. Furthermore, we established an *in vivo* NAFLD mouse model to validate our results from database analyses.

2. Materials and Methods

2.1. Isolation of Main Chemicals in SZ. SZ is composed of Raphani semen, Perilla fructus, and Sinapis semen. The main chemicals in SZ were searched using the Traditional Chinese Medicine Systems Pharmacology Database and Analysis Platform (TCMSP, Version2.3) [24], Herb Ingredients’ Targets (HIT) [25], Traditional Chinese Medicines Integrated Database (TCMID, Version2.0) [26], and Search Tool for Interactions of Chemical (STITCH, Version5.0) [27]. To estimate their drug-likeness, the physicochemical characteristics of collected chemicals were compared with those of known drugs, according to their AMDE (absorption, metabolism, distribution, excretion). In 2012, Liang et al. proposed that quantitative estimate of drug-likeness (QED) [28,29], an evaluation index of drug-likeness, could effectively estimate the AMDE of chemicals. QED was calculated using the following equation:

$$\text{QED} = \exp\left(\frac{1}{n} \sum_{i=1}^n \ln d_i\right). \quad (1)$$

In this equation, d_i denotes the desirability function of 8 major molecular descriptors, including the relative molecular weight of the compound, oil/water partition coefficient, the number of hydrogen bond receptors, the number of hydrogen bond donors, polar surface area, the number of rotatable bonds in the compound, the number of aromatic rings in the compound, and the number of non-pharmaceutical substructures [30]. During the initial screening of chemicals, a threshold of 0.2 was set according to the QED of 1,805 drugs released by Food and Drug Administration (FDA) in the DrugBank [31].

2.2. Screening of Main Targets of Chemicals in SZ. Potential targets of the above-screened chemicals were searched from HIT, TCMID, STITCH, and TCMSP, and their names were normalized with the National Center for Biotechnology Information (NCBI) database. Enrichment score or gene score (GS) was calculated based on the binomial distribution $[p(X \geq k)]$ to screen out the targets:

$$p(X \geq k) = \sum_{m=k}^n C_n^m \left(\frac{g}{n}\right)^m \left(1 - \frac{g}{n}\right)^{n-m}, \quad (2)$$

$$GS = \begin{cases} \frac{-\log(p(X \geq k))}{\text{Rank}(p(X \geq k))}, & \text{if } p(X \geq k) \leq 0.05, \\ 0, & \text{otherwise,} \end{cases} \quad (3)$$

k is the number of chemicals with function on the studied targets, n is the total number of chemicals, and g is the average number of chemicals functioning on each target. After adjustment of the false discovery rate (FDR), the possibility of interaction among more than k chemicals in the total chemicals (n) of the targets was randomly calculated by equation (2). Equations (2) and (3) were used to assess the likelihood of random results. $p < 0.05$ suggested that the number of interactive chemicals was significantly larger than the expected and could be considered as the target goal. The database of SZ targets was established with an associated threshold of 400 and a significant threshold of 0.05.

2.3. Screening of Targets Associated with NAFLD. The relevant targets of NAFLD were searched from GeneCards [32] and funneled into a database.

2.4. Enrichment Analyses of GO and KEGG Pathways. Targets of SZ and NAFLD were subjected to enrichment analyses of Gene Ontology (GO) terms (including molecular functions, biological processes, and cellular components) and Kyoto Encyclopedia of Genes and Genomes (KEGG) pathways. A significant correlation ($p < 0.01$) between a gene set and GO terms and KEGG pathways was estimated by a hypergeometric distribution model as follows [23]:

$$p = 1 - \sum_{i=0}^{k-1} \frac{\binom{M}{i} \binom{N-M}{n-i}}{\binom{N}{n}}, \quad (4)$$

where N is the total number of genes, M is the number of KEGG pathways or annotated GO terms, n is the number of genes in the gene set to be analyzed, and k is the number of shared genes. p value after adjustment of FDR [33] was used to reflect the association strength between the target and enriched pathways or GO terms. $p < 0.01$ was considered statistically significant.

2.5. Establishment of NAFLD Mouse Model and Drug Intervention. A total of 18 five-week-old male C57BL/6J mice (Shanghai SLAC Laboratory Animal Co., Ltd.) were housed in the SPF-level animal center of Longhua Hospital, Shanghai University of Traditional Chinese Medicine. The mice were randomly divided into the control group ($n = 6$) and NAFLD group ($n = 12$) and fed with a normal diet and a high-fat diet, respectively. From the 23rd week, the mice in NAFLD group were randomly subgrouped into model group ($n = 6$) and SZ group ($n = 6$). The mice in SZ group were intervened by intragastric administration of SZ for eight weeks, while the remaining with normal saline. At the end of the experiment, all animals were fasted overnight and anesthetized through intraperitoneal injection of 30 mg/kg pentobarbital sodium. Blood samples were collected and serum was separated through centrifugation. The livers were collected and weighed and then frozen or fixed in 10% formalin for further investigation.

SZ, provided by the Pharmacy Department of Longhua Hospital, Shanghai University of Traditional Chinese Medicine, was composed of Raphani semen (9 g), Perilla fructus (9 g), and Sinapis semen (9 g). According to the guideline proposed by the Methodology of Pharmacology of Traditional Chinese Medicine, the dosage of SZ for each mouse was calculated to be equal to the clinical dose of a 70 kg adult (3.51 g crude drug/kg/d). These three herbs were mixed at a mass ratio of 1:1:1 and grinded and then extracted by boiling water twice (30 min each time). Afterwards, the total extract was concentrated to 3.51 g crude drug/mL and stored at 4°C. When used, each mouse was given 0.2 mL SZ at the corresponding concentration adjusted with 0.9% saline by gavage. The experimental protocols were approved by the Institutional Animal Care and Use Committee of Shanghai University of TCM (IACUC No.: LHERAW-19052).

2.6. Pathological Examination of Mouse Liver Tissues. After sacrifice, mouse liver tissues were fixed in 4% neutral paraformaldehyde solution for 24 h and then dehydrated and paraffin-embedded, until they were sliced into 5 μ m sections for H&E staining and observation.

2.7. Serum Biochemistry. Serum samples collected from mice were examined in the Laboratory of the Longhua Hospital, Shanghai University of Traditional Chinese Medicine. In brief, relative levels of alanine aminotransferase (ALT), aspartate aminotransferase (AST), and fasting blood glucose (FBG) were detected using an automatic biochemical analyzer with commercial reagents (Roche).

2.8. Intraperitoneal-Injected Glucose Tolerance Test (IPGTT). IPGTT in the mice was conducted at the 8th week of intragastric administration. After fasting for 12 h, the blood glucose (BG) level was first measured as a baseline. Subsequently, the mice were intraperitoneally administrated with 1 g/kg glucose, followed by determination of tail vein blood glucose at 15, 30, 60, and 90 min with an automated

glucometer (Johnson, Shanghai, China). The area under the curve (AUC) was calculated for the results of IPGTT.

2.9. Western Blotting Analysis. The protein was extracted from liver tissues. BCA protein assay kit (CoWin Bioscience, Beijing, China) was applied to determine protein concentration. The protein (100 μ g for each sample) was separated with 10% sodium dodecyl sulfate-polyacrylamide gel electrophoresis (SDS-PAGE) and then transferred to a PVDF membrane (Millipore, Billerica, MA, USA). After blockade with 5% skim milk, the membrane was incubated with targeted primary antibodies overnight at 4°C and then with secondary antibody at room temperature for 1 h. The Phospho-AKT and β -actin antibodies and secondary antibodies were purchased from Cell Signaling Technology (Danvers, MA, USA). Finally, the signals were detected by enhanced chemiluminescence (ECL) Detection Kit (Millipore, Billerica, MA, USA) and captured by G: BOX Chemi XT4 System (Syngene, Cambridge, UK). GeneTools software (Syngene) was used for quantification. The relative protein expression was normalized to β -actin.

2.10. ELISA of Serum TNF- α and Insulin. Serum levels of TNF- α and fast insulin (FIN) of mice were detected using ELISA (enzyme-linked immunosorbent assay) according to the manufacturer's protocols labeled on commercial kits (Shanghai WestTang Bio-tech Co., Ltd.).

2.11. Calculation of HOMA-IR. The homeostasis model assessment of insulin resistance (HOMA-IR) is an index that quantifies insulin resistance. Mouse HOMA-IR was calculated as follows: $HOMA-IR = FBG \text{ (mmol/L)} \times FINS \text{ (}\mu\text{U/mL)} / 22.5$. The unit conversion for FIN is as follows: $1 \mu\text{g/L} = 1000/45.4 \mu\text{U/mL}$.

2.12. Quantitative RT-PCR. Primer sequences used in RT-PCR were verified using the Basic Local Alignment Search Tool (BLAST) and synthesized by Shanghai Shinegene Biotech Co., Ltd. (Table 1). RNA was isolated from mouse liver tissues using TRIZOL method and reversely transcribed into cDNAs using the ABI reverse transcription kit. Later, cDNA was amplified by the StepOnePlus™ qRT-PCR system, with β -actin as the internal reference. Relative levels were calculated by $2^{-\Delta\Delta CT}$ method.

2.13. Statistical Analyses. Statistical analyses and figure formatting were conducted by using SPSS 24.0 and Graphpad Prism 7.0, respectively. Data were expressed as mean \pm SD. Normally distributed data with equal variance were compared by one-way ANOVA, followed by LSD *t*-test. $p < 0.05$ was considered statistically significant.

3. Results

3.1. Effective Chemicals in SZ and Their Targets. According to the searching results from TCMSP, HIT, and TCMID, 52 types of chemicals were found in Raphani

TABLE 1: The primer sequences for quantitative RT-PCR.

Gene	Primer sequence (5'-3')
m β -Actin	Forward: GAGACCTTCAACACCCCAGC
	Reverse: ATGTCACGCACGATTTCCC
mTNF- α	Forward: CCCTCCAGAAAAGACACCATG
	Reverse: CACCCCGAAGTTCAGTAGACAG

semen, 128 in *Perilla fructus*, and 51 in *Sinapis semen*. After calculation with equation (1) and QED threshold 0.2, 27 effective chemicals in SZ were obtained, mainly including β -sitosterol, luteolin, stigmasterol, and mustard oil, etc. (Table 2). A database of chemicals within SZ was then established.

3.2. Targets of Effective Chemicals in SZ. Potential targets of the above-screened chemicals were searched in HIT, TCMID, STITCH, and TCMSP and normalized using NCBI database. After the calculation of GS using equations (2) and (3), 20 targets were selected, mainly including protein kinase B1 (AKT1), tumor necrosis factor (TNF), and caspase-3 (CASP3) (Table 3). A database was then established based on these targets.

3.3. Screening Targets of NAFLD. By searching the keyword "non-alcoholic fatty liver disease" in GeneCards, 75 genes associated with human NAFLD and a correlation score >30 were selected (Table 4). A database about the target genes of NAFLD was then established.

3.4. GO Enrichment Analysis on Targets of SZ and NAFLD. A total of 20 main targets of SZ and 75 targets of NAFLD were subjected to GO enrichment analysis of molecular functions, biological processes, and cellular components. As shown in Figure 1 and Figures S1 and S2, targets of SZ and NAFLD were correlated with each other and mainly enriched in oxidative stress, lipopolysaccharide (LPS) response, and fatty acid metabolism. In addition, it is considered that the cumulative distribution percentages of common enriched targets or pathways can be used to reflect the correlation between the medicine and the disease. A disease that is more closely associated with a medicine shares more common targets or pathways in the top *k* enriched targets [23]. In the present study, the cumulative distribution of enriched GO targets was 38.93%, and the area under the curve (AUC) of the top 30 enriched GO targets was up to 23.388, suggesting a close correlation between targets of SZ and NAFLD (Figure 2).

3.5. KEGG Enrichment Analysis. Potential pathways enriched in the targets of SZ and NAFLD were explored by KEGG enrichment analysis. A total of 126 pathways were enriched in SZ targets, 46 in NAFLD targets, and 34 in both. A total of 18 top pathways are depicted in Figure 3, including NAFLD, TNF- α , apoptosis, T2DM, lifespan regulation, adipokines, insulin resistance pathway, etc. The pathways shared by SZ and NAFLD showed a similarity of up to

TABLE 2: Active compounds of SZ.

Pubchem CID	Compound	QED
6431151	(-)-cis-Beta-Elemene beta-sitosterol	0.2169
222284	Stigmasterol	0.2418
5280794	Eugenol	0.2243
3314	Phenethyl isothiocyanate	0.5907
16741	Allyl isothiocyanate	0.4236
5971	Vitamin E	0.3523
14985	Luteolin	0.2430
5280445	Apigenin	0.4015
5280443	Phenylacetaldehyde	0.4928
998	Diisobutyl phthalate	0.4882
6782	Ethylparaben	0.4696
8434	Hexanal	0.6242
6184	Cholesterol	0.3489
5997	Dibutyl phthalate	0.2663
3026	Riboflavin	0.3671
493570	Benzyl isothiocyanate	0.2302
2346	Benzaldehyde	0.4282
240	Toluene	0.4731
1140	Ethylbenzene	0.3119
7500	2,2,2-	0.3400
8259	Trichloroethanol	0.3704
16666	l-Menthol	0.4438
5283335	2-Nonenal	0.2376
2724159	(-)-Perillaldehyde	0.3818
7362	Furfural	0.5598
7127	Methyleugenol	0.5328
253	Bioepiderm	0.3858

TABLE 3: The target genes of active compounds of SZ.

Gene ID	Gene symbol
836	CASP3
7124	TNF
207	AKT1
2936	GSR
3725	JUN
8856	NR1I2
9407	TMPRSS11D
1543	CYP1A1
218	ALDH3A1
224	ALDH3A2
2353	FOS
2950	GSTP1
4129	MAOB
4318	MMP9
5594	MAPK1
5595	MAPK3
7157	TP53
842	CASP9
847	CAT
8989	TRPA1

73.91%. In addition, the area under the curve of the top 30 overlapped pathways between SZ and NAFLD was 16.00 (Figure 4). These results showed multiple pathways were enriched in the targets of both SZ and NAFLD, suggesting a strong potential therapeutic efficacy of SZ on NAFLD.

In Figure 5, the network of NAFLD pathways enriched in both SZ and NAFLD targets was depicted. The major molecular targets regulated by SZ were labeled with the red star, including TNF- α , AKT, activator protein 1 (AP-1), and caspase-3. They could promote the development and aggravation of NAFLD from the initial phase (excessive lipid accumulation) to NASH, through regulating insulin resistance, endoplasmic reticulum stress, oxidative stress, inflammatory response, fibrosis, and cell apoptosis. Taken together, SZ might counter NAFLD by regulating the above-searched pathways.

3.6. SZ Alleviated Liver Histopathological Changes and Improved Liver Function. H&E staining of liver tissues showed a normal structure of the hepatic lobules in control mice. NAFLD mice showed diffusely distributed macrovesicular and vesicular steatosis in the hepatic lobule, local infiltration of inflammatory cells, and ballooning degeneration of hepatocytes. In comparison to the model mice, the liver pathology was significantly alleviated after SZ treatment, as manifested by reduced area and severity of steatosis. Notably, local infiltration of inflammatory cells and ballooning degeneration were absent in SZ group (Figure 6). In addition, serum ALT and AST were significantly higher in the model group than in the control group ($p < 0.01$) and were remarkably reduced by SZ treatment ($p < 0.01$).

3.7. SZ Improved Glucose Tolerance and Insulin Resistance. Compared with the mice in the control group, NAFLD mice showed significantly higher FBG ($p < 0.01$), which was reduced following SZ intervention ($p < 0.01$). IPGTT results and AUC values demonstrated that the ability of mice to regulate blood glucose was attenuated in the model group but obviously reversed by SZ treatment. HOMA-IR remained higher ($p < 0.01$) and phosphor-AKT was lower ($p < 0.05$) in NAFLD mice than in controls, indicating that insulin resistance existed in the model mice. SZ treatment significantly downregulated the HOMA-IR ($p < 0.01$) and activated hepatic AKT ($p < 0.05$) (Figure 7).

3.8. SZ Downregulated TNF- α Level of NAFLD Mice. ELISA data revealed a higher serum TNF- α in the model group than in the control group ($p < 0.05$). After intervention with SZ, serum TNF- α in NAFLD mice was remarkably reduced ($p < 0.05$). Consistently, SZ significantly downregulated the mRNA level of TNF- α in the liver tissues of NAFLD mice ($p < 0.01$) (Figure 8).

4. Discussion

In this study, effective chemicals in SZ, their targets, and pathways enriched in NAFLD were searched through online databases. Meanwhile, the efficacy of SZ in the treatment of NAFLD was estimated by the approach of network pharmacology. A total of 27 effective chemicals of SZ were obtained, including β -sitosterol, luteolin, stigmasterol, mustard oil, etc. Some of them, such as β -sitosterol and

TABLE 4: The target genes of NAFLD.

Gene ID	Gene symbol
5465	PPARA
4481	MSR1
1376	CPT2
3953	LEPR
1401	CRP
5468	PPARG
7099	TLR4
2678	GGT1
5728	PTEN
3586	IL10
7040	TGFB1
1499	CTNNA1
207	AKT1
836	CASP3
338	APOB
335	APOA1
406913	MIR126
348	APOE
406906	MIR122
3458	IFNG
3553	IL1B
5265	SERPINA1
847	CAT
355	FAS
3643	INSR
406986	MIR203A
7157	TP53
51085	MLXIPL
1571	CYP2E1
3667	IRS1
406901	MIR107
80339	PNPLA3
1649	DDIT3
406919	MIR130A
56729	RETN
407035	MIR31
407015	MIR26A1
3172	HNF4A
407040	Amir34A
2147	F2
7422	VEGFA
5599	MAPK8
6347	CCL2
7124	TNF
406983	MIR200A
406984	Amir200B
3077	HFE
3576	CXCL8
407018	MIR27A
19	ABCA1
406991	MIR21
3030	HADHA
407004	MIR22
1636	ACE
213	ALB
3630	INS
407029	MIR30A
9971	NR1H4
10062	NR1H3
406932	MIR140
6720	SREBF1
4023	LPL
3569	IL6
406952	MIR17
3479	IGF1
100380876	NAFLD1
9370	ADIPOQ
4547	MTTP
406921	MIR132
3952	LEP
174	AFP
26503	SLC17A5
5444	PON1
2168	FABP1
2875	GPT

luteolin, had been isolated and identified before [34, 35]. Then, 20 main targets highly correlated with NAFLD were screened out from the online database, including TNF, AKT, caspase-3, etc. Furthermore, GO and KEGG analyses showed that SZ was capable of regulating multiple biological processes and pathways enriched in NAFLD, TNF- α , apoptosis, T2DM, lifespan regulation, adipokines, insulin resistance pathway, etc. In another network pharmacology analysis of SZ in the treatment of asthma, 22 effective chemicals were extracted, which were similar to our study. In addition, enrichment analysis suggested that the therapeutic mechanism of SZ in treating asthma might involve signaling pathways of PI3K-Akt, TNF, and hypoxia inducible factor-1 [36]. This suggests that the traditional formula exerts similar effects on the regulation of molecular signaling pathways, even for different diseases. According to the method of Yang M. et al., a disease that is more closely associated with a medicine shares more terms in the top k enriched GO terms or KEGG pathways [23]. In the present study, the relative larger area under the curve of the top 30 GO terms and KEGG pathways was obtained, suggesting a close correlation and a stronger effect of SZ on NAFLD.

The approach of network pharmacology is just based on *in silico* analysis. Therefore, to validate the results from network pharmacology analysis, an *in vivo* NAFLD model was established with mice fed on a high-fat diet with or without SZ treatment. Diets rich in fat, like 30%–75% of total calories derived from saturated fatty acids (\pm unsaturated fatty acids), have been proved useful to induce metabolic alterations and NAFLD. This model can be used to mimic the pathological and molecular alterations in humans with NAFLD [37]. In this study, the mice fed with 30-week HFD displayed hepatosteatosis with inflammatory infiltration and ballooning hepatocytes in liver tissues, elevated serum ALT and AST, and decreased glucose tolerance, indicating the presence of NAFLD. SZ treatment significantly ameliorated histopathological changes (e.g., steatosis and inflammatory infiltration), downregulated serum transaminases, and improved glucose tolerance. These results confirmed the strong association between SZ and NAFLD predicted by network pharmacology analysis but also verified the effect of SZ on NAFLD predicted according to TCM theory.

It has been reported that modified San Zi Yang Qin Decoction (SZ plus dodder and glossy privet) could reduce the levels of FBG and 2 h postprandial blood glucose and increase the glucose tolerance in type 2 diabetes model rats induced by high-fat diet and multiple low-dose streptozotocin injections [15], which is consistent with our results. In addition, natural compounds in SZ, such as luteolin, β -sitosterol, and stigmaterol, can counter NAFLD or NASH in rodents. Luteolin alleviates NASH through repressing inflammatory pathways and oxidative stress [38]. β -Sitosterol prevents macrovesicular steatosis induced by a high-fructose diet and the progression of NAFLD to steatohepatitis [39]. After a 17-week treatment with 0.4% stigmaterol and β -sitosterol, NAFLD was significantly alleviated in mice fed with a high-fat western-style diet (HFWD) [40]. These natural compounds might be the effective ingredients of SZ;

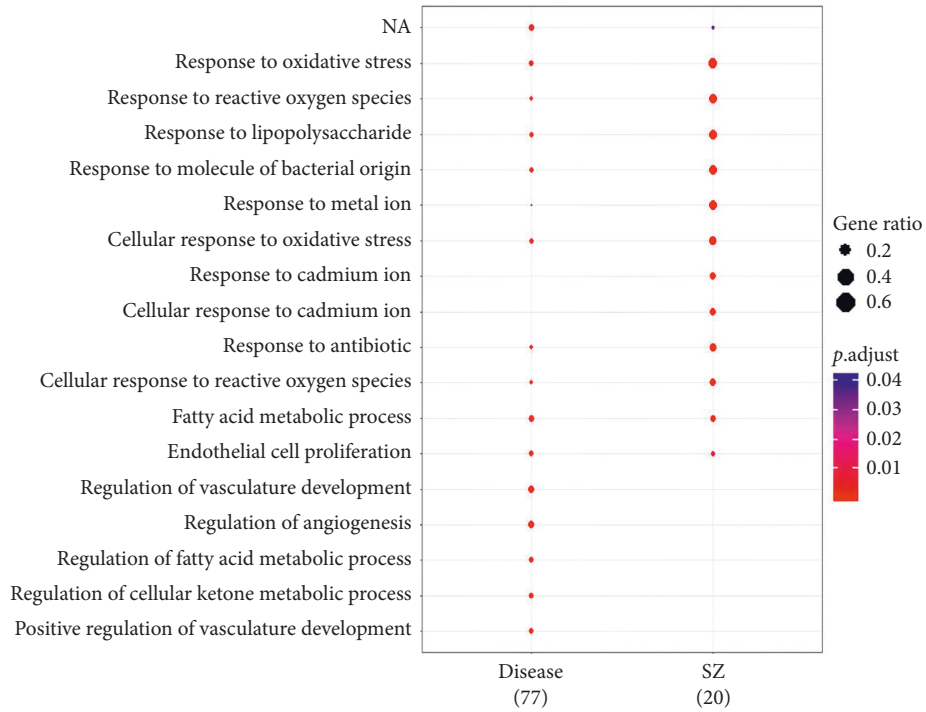


FIGURE 1: GO enrichment analysis of biological processes of SZ and NAFLD.

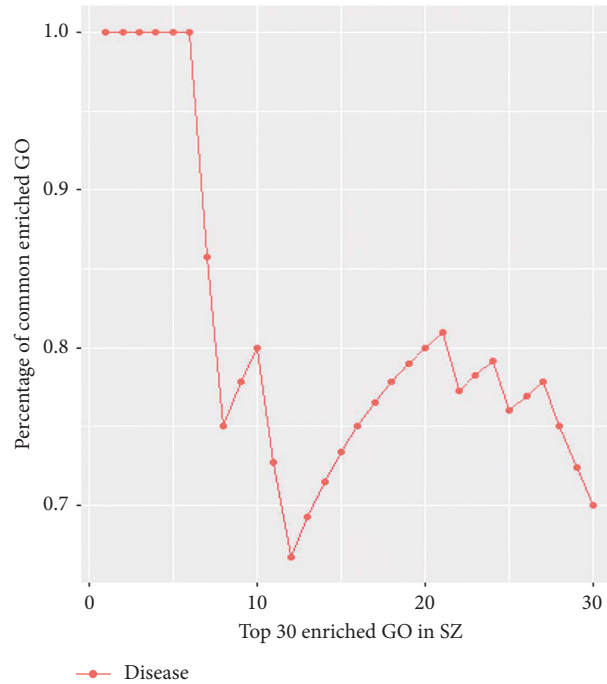


FIGURE 2: The cumulative distribution of percentages of common terms from the top 30 enriched GO terms in SZ for NAFLD.

therefore, these experimental data also support our findings of the therapeutic efficacy of SZ for NAFLD.

The pathogenesis of NAFLD is a parallel multi-hit process, including insulin sensitivity, oxidative stress, mitochondrial dysfunction, the release of inflammatory cytokines, etc. [4]. According to our network pharmacology analysis, SZ may function on NAFLD through regulating

pathways associated with insulin resistance (IR), TNF- α , endoplasmic reticulum stress, oxidative stress, and hepatocyte apoptosis. Through these regulations, SZ rebalances lipid metabolism and protects against liver injury in NAFLD.

IR is a key step during the development of NAFLD. The inactivation of AKT signaling pathway is the key factor of IR [41, 42]. The liver is an important target organ of insulin.

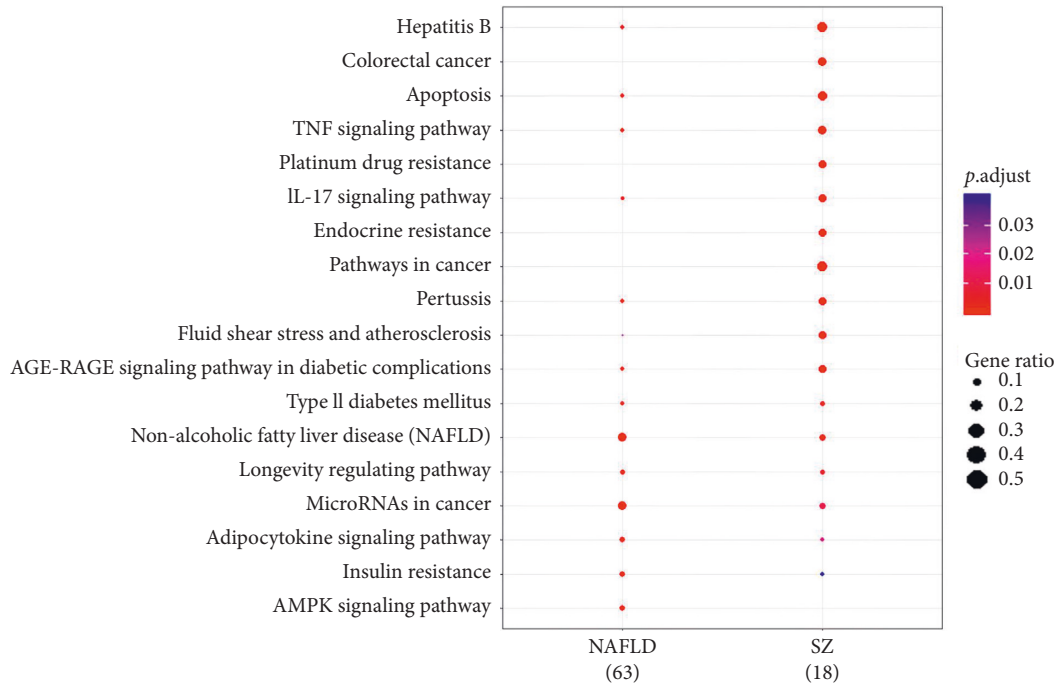


FIGURE 3: KEGG pathways enriched of SZ and NAFLD.

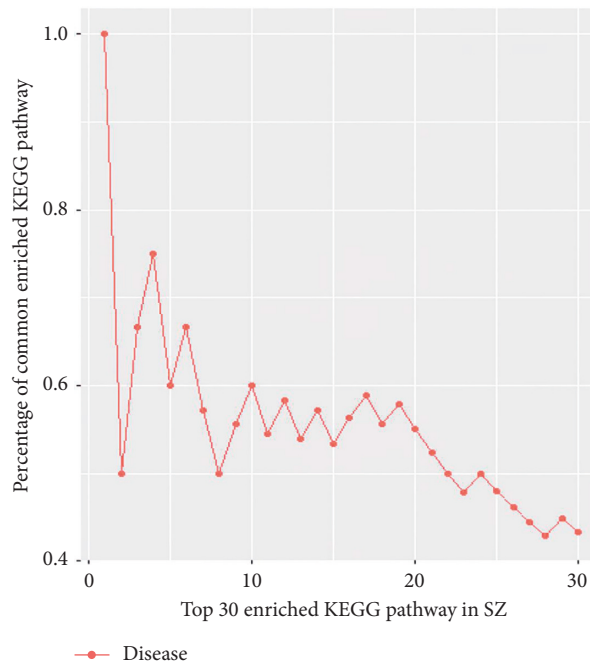


FIGURE 4: The cumulative distribution of percentages of common terms from the top 30 enriched KEGG terms in SZ for NAFLD.

Under physiological conditions, insulin can stimulate glycogen synthesis, repress the activities of gluconeogenesis enzymes, reduce blood glucose, and promote adipogenesis by activating AKT signaling pathway in hepatocytes [43]. Once insulin resistance occurs, an abnormally activated PI3K/AKT signaling pathway facilitates gluconeogenesis in the liver [44]. In the meantime, abnormally elevated insulin increases the synthesis of lipids in hepatocytes and decreases

the oxidation of fatty acids, thus leading to the disorder of glucose and lipid metabolisms [45, 46]. Our *in vivo* data indicated that SZ significantly reduced FBG level and HOMA-IR, increased glucose tolerance, and dissipated liver fat accumulation in NAFLD mice. The AKT signaling pathway, once inactivated, was then upregulated by SZ treatment. These results demonstrated that SZ could ameliorate insulin resistance, which is consistent with that in our

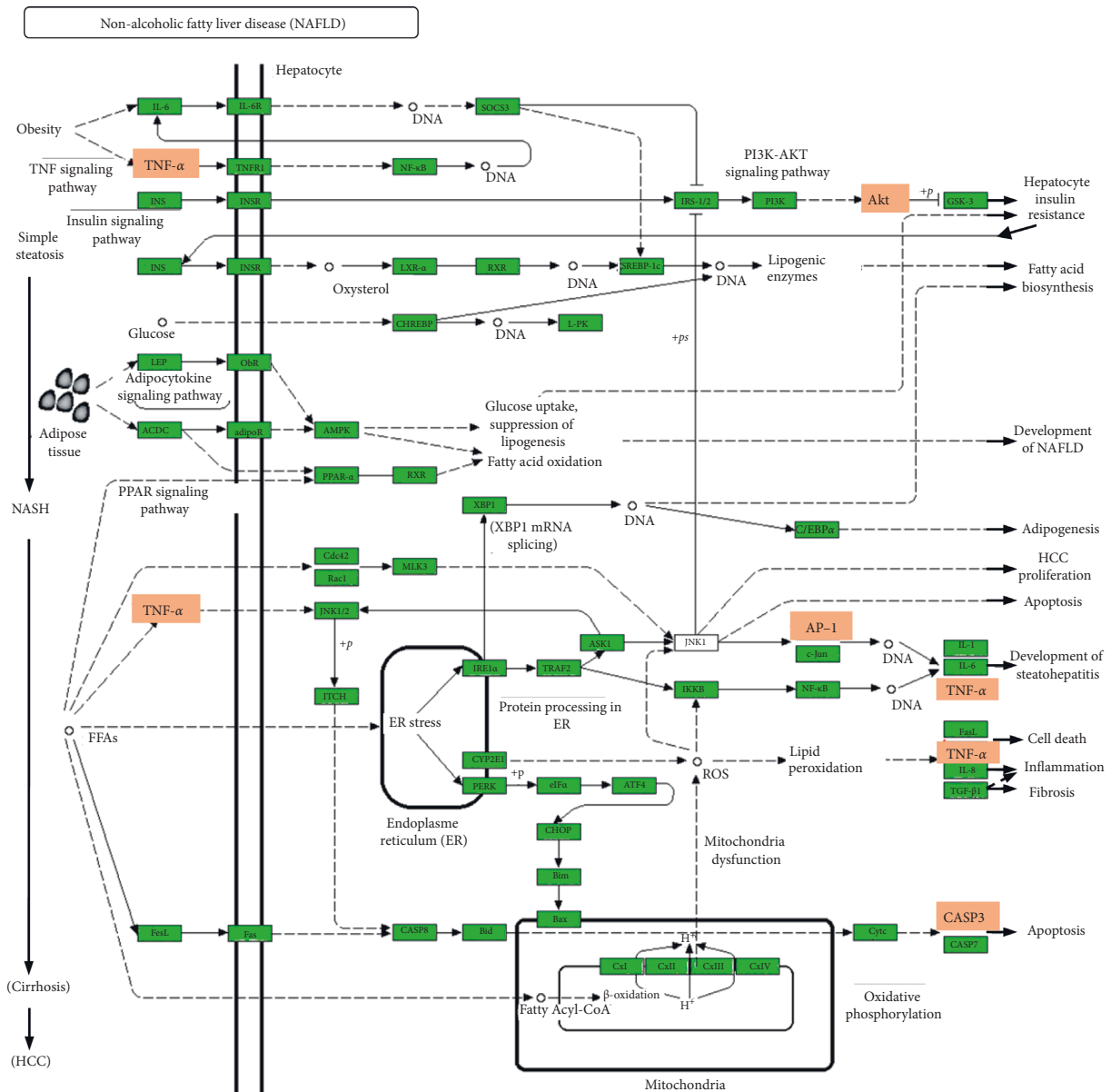


FIGURE 5: The NAFLD pathway enriched according to both SZ and NAFLD targets. The orange box marks the potential targets of SZ.

network pharmacological analysis. As one downstream molecule of IRS-1, AKT can be activated by phosphorylated IRS-1. Similarly, modified SZ can increase tyrosine-phosphorylated insulin receptor substrate-1 (IRS-1) in the skeletal muscle of T2DM rats to relieve insulin resistance [15].

TNF- α is critical for the development of NAFLD. It is reported that hepatocyte steatosis can activate NF- κ B to trigger the production of TNF- α in NAFLD. On the one hand, TNF- α induces hepatocyte apoptosis by activating caspase and releasing cytochrome C to form apoptotic bodies [47, 48]. On the other hand, TNF- α can lead to hepatocyte necrosis through inducing mitochondrial dysfunction, production of reactive oxygen species (ROS), and lipid peroxidation [49, 50]. All these processes aggravate simple steatosis of the liver into irreversible NASH with

inflammatory responses [51]. TNF- α is also involved in lipid metabolism. It stimulates the release of free fatty acid (FFA), which in turn promotes the release of TNF- α from macrophages, eventually enhancing lipid accumulation in the liver [52, 53]. By directly targeting the intracellular insulin signal transduction system, TNF- α can enhance insulin resistance through upregulating suppressor of cytokine signaling 3 (SOCS-3) [54] and inhibiting adiponectin activity [55]. Our results showed that TNF- α level in serum and liver tissues was higher in NAFLD mice than in controls but remarkably reduced by SZ intervention. The *in vivo* results were consistent with those of our network pharmacological analysis in that SZ may rely on the TNF- α signaling pathway to reverse NAFLD. It has been reported that SZ could treat bronchial asthma by blocking cysteinyl leukotrienes- (CysLTs-) mediated inflammatory pathways

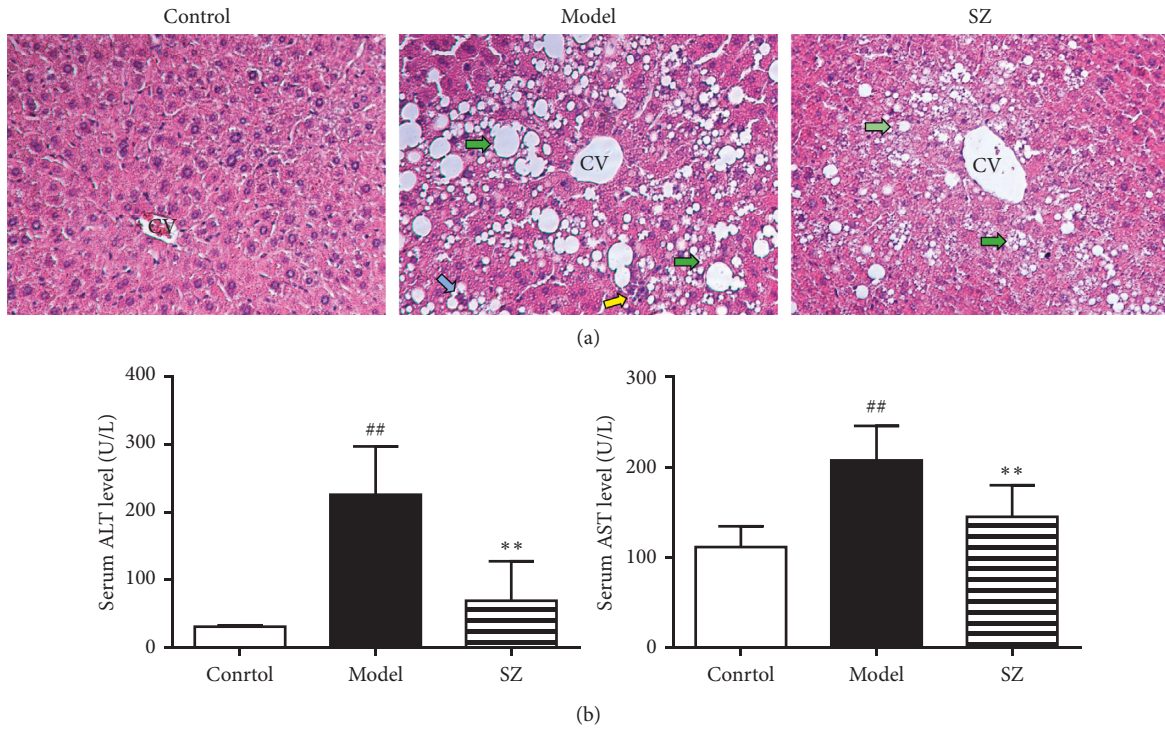


FIGURE 6: SZ alleviated liver tissue damage and improved liver function in NAFLD mice. (a) Representative photomicrographs of liver sections stained with hematoxylin and eosin (magnification: 200×). CV means centrilobular vein. The green arrow shows macrovesicular steatosis, the blue arrow shows ballooning degeneration of hepatocytes, and the yellow arrow shows infiltration of inflammatory cells. (b) Serum transaminase level. $n=6$. ^{##} $p < 0.01$ vs control; ^{**} $p < 0.01$ vs model.

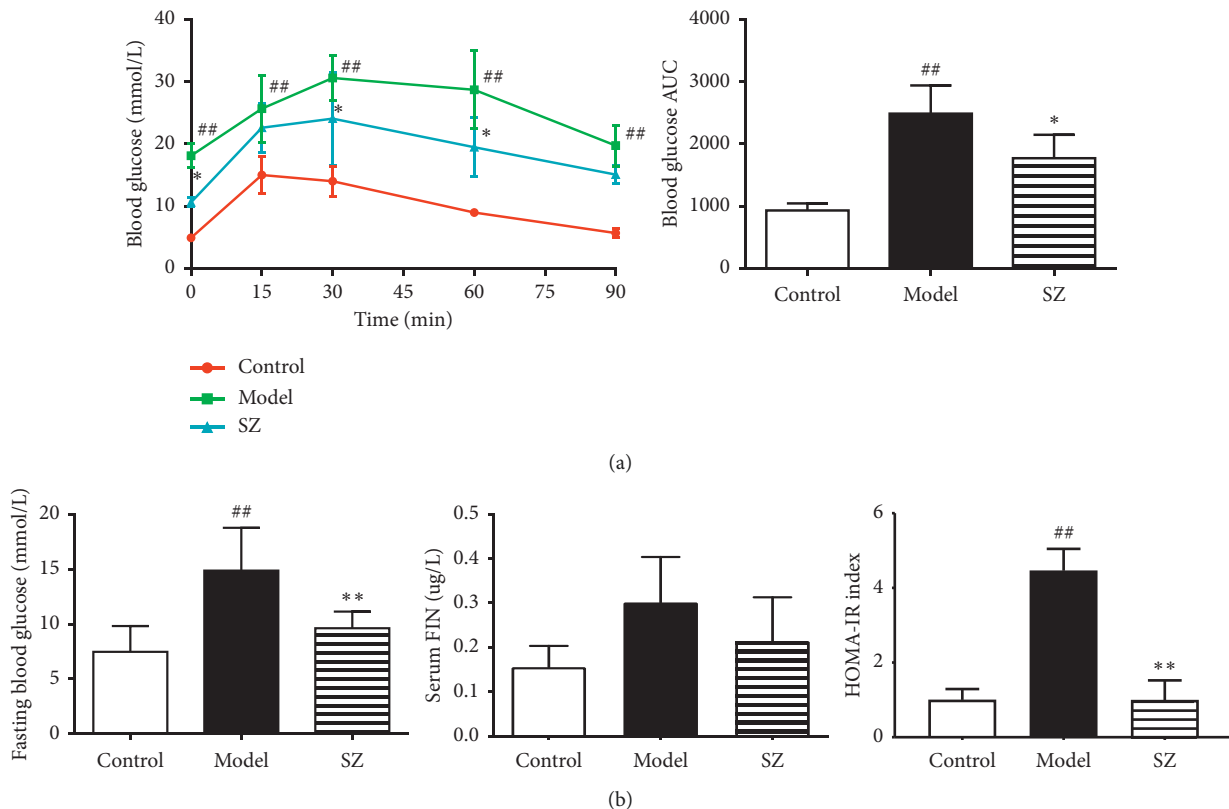


FIGURE 7: Continued.

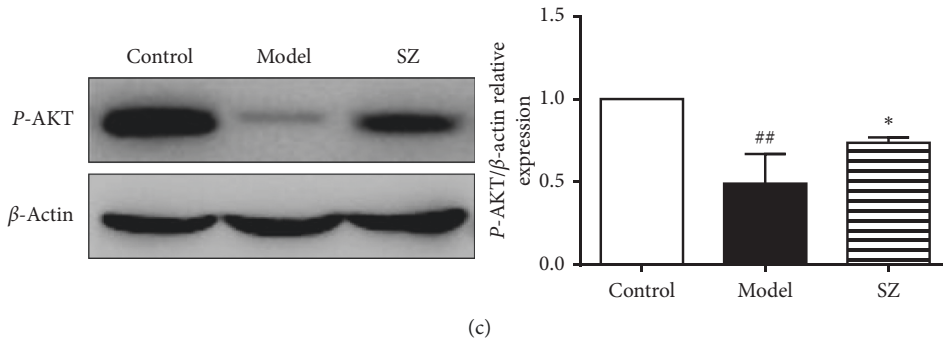


FIGURE 7: SZ increased glucose tolerance and decreased insulin resistance in NAFLD mice. (a) The IPGTT performed at the end of the 8-week treatment and the AUC calculated for the results of IPGTT. (b) Fasting blood glucose, insulin level, and the calculated HOMA-IR index. (c) The expression level of phospho-AKT in the liver tissues of mice. $n = 4$. # $p < 0.05$ vs control; ## $p < 0.01$ vs control; ** $p < 0.01$ vs model; * $p < 0.05$ vs model.

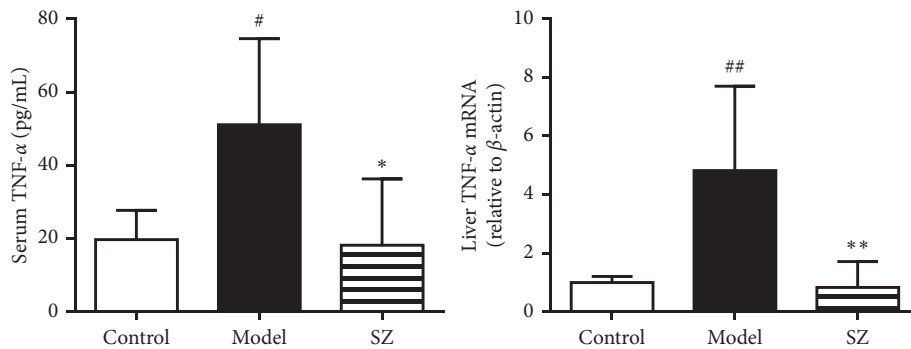


FIGURE 8: SZ downregulated TNF- α levels in serum and liver tissues of NAFLD mice. $n = 6$. # $p < 0.05$ vs control; ## $p < 0.01$ vs control; ** $p < 0.01$ vs model; * $p < 0.05$ vs model.

[56]. The combination of SZ with Erethen decoction has shown significant clinical efficacy in the treatment of acute exacerbation of COPD. It can significantly improve lung function and reduce inflammatory factors [57]. As one component of SZ, *in silico*, *in vitro*, *in vivo*, and clinical studies strongly suggest that luteolin exerts its function mainly depending on its anti-inflammatory activity. It can protect against non-alcoholic steatohepatitis in HFD induced NASH rats. TNF- α and other proinflammatory cytokines levels were decreased in the groups that received 50 and 100 mg/kg luteolin [38, 58].

During the development of NAFLD, oxidative stress, endoplasmic reticulum stress, mitochondrial dysfunction, and TNF- α signaling are all associated with the activation of c-Jun N-terminal kinase (JNK). They cooperate to trigger the damage of hepatocytes [59, 60]. AP-1 is a downstream molecule of JNK. The homodimer or heterodimer of AP-1, fabricated by C-Jun and C-Fos family members, copes with multiple stimuli by binding to DNA sequences of target genes. As our study revealed, AP-1 might be a target of SZ, indicating that SZ alleviates multi-hit liver injury via regulating the JNK pathway. The component of SZ luteolin can also inhibit LPS-induced IL-6 production by repressing the JNK signaling pathway and AP-1 activation in microglia, a process that mitigates neuroinflammation. Experiments

have confirmed that, as the upstream regulator, luteolin can alter the transcriptional activation of NF- κ B and AP-1 signaling pathways [58, 61]. During the development of NASH, multiple stimuli evoke hepatocyte apoptosis. Hepatocyte apoptosis is either a vital feature or a key factor leading to the aggravation of NASH. It is reported that the severity and extent of hepatocyte apoptosis in liver biopsy samples of NASH patients exceed those in non-NASH cases. The activity of caspase-3 is positively correlated with the symptom severity and pathologic stage of NASH [62]. Our results uncovered that caspase-3 may be targeted, and the apoptosis pathway is regulated by SZ. But, these findings still require further validation.

5. Conclusions

We have speculated that the TCM formula SZ might be applied to treat NAFLD according to the TCM principle of “homotherapy for heteropathy” and previously reported clinical cases. Based on network pharmacology-based analysis and *in vivo* experiments in SZ-intervened NAFLD mice, we for the first time verified the efficacy of SZ in alleviating NAFLD, providing evidence for its clinical application. This study also confirmed the TCM conception of “homotherapy for heteropathy” from the network molecular

level. Meanwhile, SZ may improve NAFLD through targeting AKT, TNF- α , AP-1, and caspase-3, and regulating pathways enriched in insulin resistance, TNF- α , apoptosis, T2DM, etc. These findings should be further clarified through *in vivo* and *in vitro* experiments in the future.

Data Availability

The datasets used to support the findings in the current study are included within the article and supplementary materials.

Conflicts of Interest

The authors declare no conflicts of interest.

Authors' Contributions

Haiyan Song and Peiyong Zheng contributed to study design; Yiping Li, Ming Yang, and Yang Liu carried out data collection; Jiaoya Xu conducted statistical analysis; Qianlei Wang, Yu Zheng, and Peiyong Zheng contributed to data interpretation; Yang Liu participated in literature search; Yiping Li and Haiyan Song performed manuscript preparation. All authors read and approved the final manuscript. Yiping Li and Yang Liu contributed equally to this work.

Acknowledgments

This study was supported by the National Natural Science Foundation of China (Nos. 81703867, 81873254, and 81704047) and Emerging Interdisciplinary Program of Traditional Chinese Medicine of Shanghai (Evidence-Based Traditional Chinese Medicine).

Supplementary Materials

Figure S1: GO enrichment analysis of molecular functions. Figure S2: GO enrichment analysis of cellular components. (Supplementary Materials)

References

- [1] N. Katsiki, D. P. Mikhailidis, and C. S. Mantzoros, "Non-alcoholic fatty liver disease and dyslipidemia: an update," *Metabolism*, vol. 65, no. 8, pp. 1109–1123, 2016.
- [2] Z. M. Younossi, A. B. Koenig, D. Abdelatif, Y. Fazel, L. Henry, and M. Wymer, "Global epidemiology of nonalcoholic fatty liver disease—meta-analytic assessment of prevalence, incidence, and outcomes," *Hepatology*, vol. 64, no. 1, pp. 73–84, 2016.
- [3] G. Tarantino, V. Citro, and D. Capone, "Nonalcoholic fatty liver disease: a challenge from mechanisms to therapy," *Journal of Clinical Medicine*, vol. 9, no. 1, 2020.
- [4] F. Bessone, M. V. Razori, and M. G. Roma, "Molecular pathways of nonalcoholic fatty liver disease development and progression," *Cellular and Molecular Life Sciences*, vol. 76, no. 1, pp. 99–128, 2019.
- [5] Y. Hu, "Advantages and prospects of traditional Chinese medicine in treating nonalcoholic fatty liver disease," *World Chinese Medicine*, vol. 10, no. 02, pp. 149–152, 2015.
- [6] J. Wang, "Experience of Lingtai Wang in treating fatty liver from phlegm," *Liaoning Journal of Traditional Chinese Medicine*, vol. 38, no. 05, pp. 832–833, 2020.
- [7] X. Quan, X. Qi, and H. Liu, "Pharmacological action and clinical study development of perilla leaf," *Information on Traditional Chinese Medicine*, vol. 20, no. 02, pp. 21–22, 2004.
- [8] L. Sui, S. Li, and W. Lv, "Summarization on the study progress of Sanzi Yangqing decoction in recent ten years," *Guiding Journal of Traditional Chinese Medicine and Pharmacy*, vol. 07, pp. 103–104, 2020.
- [9] G. Yi, "Research progress on pharmacology and clinical application of San Zi Yang Qin decoction," *Contemporary Medicine*, vol. 16, no. 24, pp. 22–23, 2020.
- [10] Q. Zhang and W. Liu, "New clinical examples of san Zi Yang Qin decoction," *Nei Mongol Journal of Traditional Chinese Medicine*, vol. 36, no. 19, p. 42, 2020.
- [11] J. Peng and L. Yang, "Five prescriptions of Zhao Shaoqin," *Shandong Journal of Traditional Chinese Medicine*, vol. 10, pp. 458–459, 2020.
- [12] H. Zhu, "47 cases of hyperlipidemia treated with San Zi Yang Qin decoction," *Henan Traditional Chinese Medicine*, vol. 22, no. 06, p. 28, 2020.
- [13] R. Chen, "New clinical application of San Zi Yang Qin decoction," *Chinese Community Doctors*, vol. 28, no. 40, p. 9, 2019.
- [14] X. Cheng and Q. Liu, "Clinical observation on 58 cases of cystic hyperplasia of mammary gland treated with Sanzi Yangqin decoction," *Journal of Traditional Chinese Medicine*, vol. 51, no. 01, pp. 41–43, 2016.
- [15] Y. Wang, X. La, C. Tian et al., "Effects of modified sanzi yangqin decoction on tyrosine phosphorylation of IRS-1 in skeletal muscle of type 2 diabetic rats," *Evidence-Based Complementary and Alternative Medicine*, vol. 2018, Article ID 7092140, 2018.
- [16] R. Zuo, M. Wan, and J. Zou, "Evaluation of MA Wanqian Huatan Quyu decoction in treatment of non-alcoholic fatty liver with phlegm-stasis syndrome," *Journal of Liaoning University of Traditional Chinese Medicine*, vol. 22, no. 02, pp. 25–28, 2013.
- [17] T. Yan, N. Yan, P. Wang et al., "Herbal drug discovery for the treatment of nonalcoholic fatty liver disease," *Acta Pharmaceutica Sinica B*, vol. 10, no. 1, pp. 3–18, 2020.
- [18] S. Li and B. Zhang, "Traditional Chinese medicine network pharmacology: theory, methodology and application," *Chinese Journal of Natural Medicines*, vol. 11, no. 2, pp. 110–120, 2013.
- [19] B. Boezio, K. Audouze, P. Ducrot, and O. Taboureau, "Network-based approaches in pharmacology," *Molecular Informatics*, vol. 36, no. 10, 2017.
- [20] J. Huang, F. Cheung, H.-Y. Tan et al., "Identification of the active compounds and significant pathways of yinchenhao decoction based on network pharmacology," *Molecular Medicine Reports*, vol. 16, no. 4, pp. 4583–4592, 2017.
- [21] Y.-f. Liu, N. Ai, A. Keys, X.-h. Fan, and M.-j. Chen, "Network pharmacology for traditional Chinese medicine research: methodologies and applications," *Chinese Herbal Medicines*, vol. 7, no. 1, pp. 18–26, 2015.
- [22] S. Li, Y. Qian, R. Xie et al., "Exploring the protective effect of ShengMai-Yin and Ganmaidazao decoction combination against type 2 diabetes mellitus with nonalcoholic fatty liver disease by network pharmacology and validation in KKAY mice," *Journal of Ethnopharmacology*, vol. 242, Article ID 112029, 2019.
- [23] M. Yang, J. Chen, L. Xu et al., "A network pharmacology approach to uncover the molecular mechanisms of herbal

- formula Ban-Xia-Xie-Xin-Tang,” *Evidence-Based Complementary and Alternative Medicine*, vol. 2018, Article ID 4050714, 22 pages, 2018.
- [24] J. Ru, P. Li, J. Wang et al., “TCMSP: a database of systems pharmacology for drug discovery from herbal medicines,” *Journal of Cheminformatics*, vol. 6, no. 1, p. 13, 2014.
- [25] H. Ye, L. Ye, H. Kang et al., “HIT: linking herbal active ingredients to targets,” *Nucleic Acids Research*, vol. 39, pp. D1055–D1059, 2011.
- [26] L. Huang, D. Xie, Y. Yu et al., “TCMID 2.0: a comprehensive resource for TCM,” *Nucleic Acids Research*, vol. 46, no. D1, pp. D1117–D1120, 2018.
- [27] D. Szklarczyk, A. Santos, C. von Mering, L. J. Jensen, P. Bork, and M. Kuhn, “STITCH 5: augmenting protein-chemical interaction networks with tissue and affinity data,” *Nucleic Acids Research*, vol. 44, no. D1, pp. D380–D384, 2016.
- [28] X. Liang, H. Li, and S. Li, “A novel network pharmacology approach to analyse traditional herbal formulae: the Liu-Wei-Di-Huang pill as a case study,” *Molecular BioSystems*, vol. 10, no. 5, pp. 1014–1022, 2014.
- [29] M. Yang, J. Chen, L. Xu et al., “A novel adaptive ensemble classification framework for ADME prediction,” *RSC Advances*, vol. 8, no. 21, pp. 11661–11683, 2018.
- [30] G. R. Bickerton, G. V. Paolini, J. Besnard, S. Muresan, and A. L. Hopkins, “Quantifying the chemical beauty of drugs,” *Nature Chemistry*, vol. 4, no. 2, pp. 90–98, 2012.
- [31] D. S. Wishart, Y. D. Feunang, A. C. Guo et al., “DrugBank 5.0: a major update to the DrugBank database for 2018,” *Nucleic Acids Research*, vol. 46, no. D1, pp. D1074–D1082, 2018.
- [32] M. Safran, I. Dalah, J. Alexander et al., “GeneCards version 3: the human gene integrator,” *Database*, vol. 2010, Article ID baq020, 2010.
- [33] A. Gossmann, P. Zille, V. Calhoun, and Y. P. Wang, “FDR-corrected sparse canonical correlation analysis with applications to imaging genomics,” *IEEE Transactions on Medical Imaging*, vol. 37, no. 8, pp. 1761–1774, 2018.
- [34] L. Duan, B. Feng, B. Zhou, W. Wang, Y. Pei, and Y. Wang, “Study on chemical constituents for relieving cough and asthma in the extractives of Sanzhi Yangqin Tang,” *Chinese Journal of Hospital Pharmacy*, vol. 28, no. 11, pp. 863–864, 2018.
- [35] H. Zhao, Z. Zhang, Y. Li, S. Hu, W. Yao, and H. Kuang, “Chemical component study of Sanzi Yangqin Tang,” *Acta Chinese Medicine and Pharmacology*, vol. 31, no. 2, pp. 15–16, 2003.
- [36] J. Zou, L. Pang, and X. Lu, “Network pharmacology analysis of Sanzi Yangqin Decoction in the treatment of asthma,” *Liaoning Journal of Traditional Chinese Medicine*, vol. 47, no. 10, pp. 133–224, 2020.
- [37] G. Kanuri and I. Bergheim, “In vitro and in vivo models of non-alcoholic fatty liver disease (NAFLD),” *International Journal of Molecular Sciences*, vol. 14, no. 6, pp. 11963–11980, 2013.
- [38] N. Abu-Elsaad and A. El-Karef, “Protection against nonalcoholic steatohepatitis through targeting IL-18 and IL-1 α by luteolin,” *Pharmacological Reports*, vol. 71, no. 4, pp. 688–694, 2019.
- [39] N. M. Gumede, B. W. Lembede, P. Nkomozepi, R. L. Brooksbank, K. H. Erlwanger, and E. Chivandi, “Beta-Sitosterol mitigates the development of high-fructose diet-induced nonalcoholic fatty liver disease in growing male Sprague-Dawley rats,” *Canadian Journal of Physiology and Pharmacology*, vol. 98, no. 1, pp. 44–50, 2020.
- [40] S. Feng, Z. Dai, A. B. Liu et al., “Intake of stigmasterol and β -sitosterol alters lipid metabolism and alleviates NAFLD in mice fed a high-fat western-style diet,” *Biochimica et Biophysica Acta (BBA)-Molecular and Cell Biology of Lipids*, vol. 1863, no. 10, pp. 1274–1284, 2018.
- [41] L. N. Bell, J. Wang, S. Muralidharan et al., “Relationship between adipose tissue insulin resistance and liver histology in nonalcoholic steatohepatitis: a pioglitazone versus vitamin E versus placebo for the treatment of nondiabetic patients with nonalcoholic steatohepatitis trial follow-up study,” *Hepatology*, vol. 56, no. 4, pp. 1311–1318, 2012.
- [42] D. M. Ferreira, R. E. Castro, M. V. Machado et al., “Apoptosis and insulin resistance in liver and peripheral tissues of morbidly obese patients is associated with different stages of non-alcoholic fatty liver disease,” *Diabetologia*, vol. 54, no. 7, pp. 1788–1798, 2011.
- [43] M. J. Watt, P. M. Miotto, W. De Nardo, and M. K. Montgomery, “The liver as an endocrine organ-linking NAFLD and insulin resistance,” *Endocrine Reviews*, vol. 40, no. 5, pp. 1367–1393, 2019.
- [44] S. Pisonero-Vaquero, A. Martinez-Ferrerias, M. V. Garcia-Mediavilla et al., “Quercetin ameliorates dysregulation of lipid metabolism genes via the PI3K/AKT pathway in a diet-induced mouse model of nonalcoholic fatty liver disease,” *Molecular Nutrition & Food Research*, vol. 59, no. 5, pp. 879–893, 2015.
- [45] K. F. Leavens and M. J. Birnbaum, “Insulin signaling to hepatic lipid metabolism in health and disease,” *Critical Reviews in Biochemistry and Molecular Biology*, vol. 46, no. 3, pp. 200–215, 2015.
- [46] M. Asrih and F. R. Jornayvaz, “Metabolic syndrome and nonalcoholic fatty liver disease: is insulin resistance the link?” *Molecular and Cellular Endocrinology*, vol. 418, no. 1, pp. 55–65, 2015.
- [47] Z. Xie, Z. Xiao, and F. Wang, “Hepatitis C virus nonstructural 5A protein (HCV-NS5A) inhibits hepatocyte apoptosis through the NF-kappaB/miR-503/bcl-2 pathway,” *Molecular Cell*, vol. 40, no. 3, pp. 202–210, 2017.
- [48] H. A. Khan, M. Z. Ahmad, J. A. Khan, and M. I. Arshad, “Crosstalk of liver immune cells and cell death mechanisms in different murine models of liver injury and its clinical relevance,” *Hepatobiliary & Pancreatic Diseases International*, vol. 16, no. 3, pp. 245–256, 2017.
- [49] Z. Chen, R. Yu, Y. Xiong, F. Du, and S. Zhu, “A vicious circle between insulin resistance and inflammation in nonalcoholic fatty liver disease,” *Lipids in Health and Disease*, vol. 16, no. 1, p. 203, 2017.
- [50] I. Garcia-Ruiz, C. Rodriguez-Juan, T. Diaz-Sanjuan et al., “Uric acid and anti-TNF antibody improve mitochondrial dysfunction in ob/ob mice,” *Hepatology*, vol. 44, no. 3, pp. 581–591, 2006.
- [51] S. L. Friedman, B. A. Neuschwander-Tetri, M. Rinella, and A. J. Sanyal, “Mechanisms of NAFLD development and therapeutic strategies,” *Nature Medicine*, vol. 24, no. 7, pp. 908–922, 2018.
- [52] C. Monmai, S. H. Go, I. S. Shin et al., “Immune-enhancement and anti-inflammatory activities of fatty acids extracted from *Halocynthia aurantium* tunic in RAW264.7 cells,” *Marine Drugs*, vol. 16, no. 9, 2018.
- [53] X. Wang, M. Huang, and Y. Wang, “The effect of insulin, TNF α and DHA on the proliferation, differentiation and lipolysis of preadipocytes isolated from large yellow croaker (*Pseudosciaena Crocea* R.),” *PLoS One*, vol. 7, no. 10, Article ID e48069, 2012.

- [54] E. Cobbina and F. Akhlaghi, "Non-alcoholic fatty liver disease (NAFLD)–pathogenesis, classification, and effect on drug metabolizing enzymes and transporters," *Drug Metabolism Reviews*, vol. 49, no. 2, pp. 197–211, 2017.
- [55] Y. He, L. Lu, X. Wei et al., "The multimerization and secretion of adiponectin are regulated by TNF-alpha," *Endocrine*, vol. 51, no. 3, pp. 456–468, 2016.
- [56] S. Xu, Y. Dong, K. Yang, X. Gong, and N. Li, "Effect of Sanzi Yangqin Tang on CysLTs mediated inflammatory pathways in bronchial epithelial cells," *Chinese Journal of Experimental Traditional Medical Formulae*, vol. 22, no. 11, pp. 137–141, 2019.
- [57] H. Xu, J. Zhu, and Y. Wang, "Effect of erchen decoction and sanzi yangqin decoction on inflammatory cytokines in patients with acute exacerbation of COPD," *Journal of Emergency in Traditional Chinese Medicine*, vol. 28, no. 11, pp. 1889–1892, 2020.
- [58] N. Aziz, M.-Y. Kim, and J. Y. Cho, "Anti-inflammatory effects of luteolin: a review of in vitro, in vivo, and in silico studies," *Journal of Ethnopharmacology*, vol. 225, pp. 342–358, 2018.
- [59] S. Ezquerro, F. Mocha, G. Frühbeck et al., "Ghrelin reduces TNF- α -induced human hepatocyte apoptosis, autophagy and pyroptosis: role in obesity-associated NAFLD," *The Journal of Clinical Endocrinology & Metabolism*, vol. 104, no. 1, pp. 21–37, 2019.
- [60] S. Aghazadeh and R. Yazdanparast, "Inhibition of JNK along with activation of ERK1/2 MAPK pathways improve steatohepatitis among the rats," *Clinical Nutrition*, vol. 29, no. 3, pp. 381–385, 2010.
- [61] S. Jang, K. W. Kelley, and R. W. Johnson, "Luteolin reduces IL-6 production in microglia by inhibiting JNK phosphorylation and activation of AP-1," *Proceedings of the National Academy of Sciences-PNAS*, vol. 105, no. 21, pp. 7534–7539, 2008.
- [62] A. E. Feldstein, A. Canbay, P. Angulo et al., "Hepatocyte apoptosis and fas expression are prominent features of human nonalcoholic steatohepatitis," *Gastroenterology*, vol. 125, no. 2, pp. 437–443, 2003.