

# Unusual coexistence of a renal anomaly and germ cell tumor: An embryonal happenstance?

Ankita Nachankar, Rahul  
Krishnatry, Anusheel Munshi,  
Kumar Prabhash<sup>1</sup>, Poladia  
Bhavesh Pradip<sup>1</sup>, C. S.  
Pramesh<sup>2</sup>, Jai Prakash Agarwal

Departments of Radiation Oncology,  
<sup>1</sup>Medical Oncology and <sup>2</sup>Thoracic  
Surgical Oncology, Tata Memorial  
Hospital, Mumbai, Maharashtra, India

## Address for correspondence:

Dr. Jai Prakash Agarwal,  
Department of Radiation Oncology,  
Tata Memorial Hospital,  
Dr. E Borges Road, Parel,  
Mumbai - 400 012, India.  
E-mail: agarwaljp@tmc.gov.in

## ABSTRACT

The germ cell lines and kidney develop in close proximity in a similar embryonic period. The extragonadal germ cell tumors and horseshoe kidney both are the result of abnormal migration of two germ line cells. Apart from origin, the combined incidence of mediastinal germ cell tumor with renal anomaly is a therapeutic challenge. This case review is an effort to address the various issues ranging from delima in origin to management and follow-up.

**Key words:** Extra-gonadal germ cell tumor, horseshoe kidney, nephrotoxicity

## INTRODUCTION

Extra-gonadal germ cell tumors (EGGCT) most commonly present in the midline of the body (retroperitoneum, mediastinum, pineal region).<sup>[1]</sup> EGGCT non-seminomatous tumors have been associated with Klinefelter syndrome (20%)<sup>[2]</sup> but rarely with other congenital anomalies. We describe an unusual case of a young adult who presented with EGGCT and a horseshoe kidney (HSK) and was successfully treated with chemotherapy, surgery and repeat surgery for a recurrent mass. We postulate an intraembryonic event occurring at the same time during organogenesis as the cause for this unique association.

## CASE REPORT

A 30-year-old gentleman presented to us with a 1-month history of left-sided chest pain. The positron emission tomography (PET)-computed tomography (CT) scan

revealed a 13.3 cm × 14 cm mass in the left upper mediastinum (SUV Max 21.4) and an incidental HSK [Figure 1a and b]. The testes were normal. A CT-guided biopsy of the mass revealed germ cell (Yolk sac) tumor, positive for CK, AFP and negative for C-kit, TTF1, CK7 and CD30. The serum alpha fetoprotein (AFP), beta human chorionic gonadotrophic hormone (β HCG) and lactate dehydrogenase (LDH) values were 16,093 ng/mL, <1.2 Miu/mL and 1013 U/L, respectively. The patient received chemotherapy with Paclitaxel (250 mg/m<sup>2</sup>; Day 1), Ifosfamide (1.2 gm/m<sup>2</sup>, Days 2–5) and Cisplatin (40 mg/m<sup>2</sup>, Days 2–5) three weekly for four cycles (TIP).

The post-chemotherapy CT scan of the chest showed a residual mediastinal mass [Figure 1c]. There was a decreasing trend in serum markers (AFP 39.8 ng/mL, β HCG <1.2 Miu/mL and LDH 250 U/L). The mass was subsequently excised and histopathology revealed a necrotic mass with no residual viable tumor. After 5 months, the patient presented with recurrent cough and raised serum LDH levels. The PET-CT scan showed a 3.2 cm × 5.2 cm recurrent mass in the anterior mediastinum (Max SUV 10.1) [Figure 1d]. The re-excision of the tumor was done and histopathology showed a mature teratoma. The patient is currently on regular follow-up and is asymptomatic, disease free radiologically and biochemically.

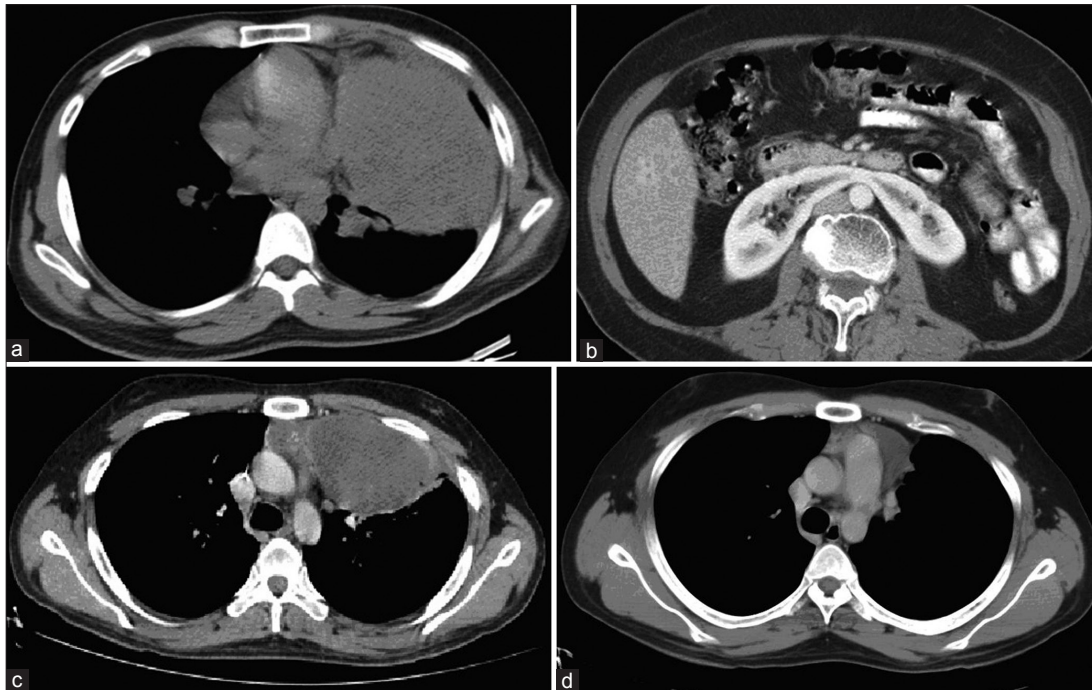
### Access this article online

#### Quick Response Code:



Website:  
www.ijmpo.org

DOI:  
10.4103/0971-5851.103150



**Figure 1:** (a) Mediastinal mass at diagnosis, (b) Horseshoe kidney, (c) Mediastinal residual mass post chemotherapy, (d) Mediastinal recurrence post surgery

## DISCUSSION

Nearly 20% of all EGGCT non-seminomatous tumors have Klinefelter's syndrome.<sup>[2]</sup> There is no documented literature on any other association of gonadal or EGGCT with congenital abnormalities. The HSK is the most common type of renal fusion anomaly and can be related to teratogenic events affecting the urinary system (Wilms tumor and carcinoid tumors).<sup>[2]</sup> Kidney is one of the least common locations for EGGCT teratomas, with only one case report of a child with HSK and intrarenal teratoma.<sup>[3]</sup>

The development of the genital apparatus accompanies that of the urinary system.<sup>[4]</sup> The intermediate mesoblast consists of two components, genital ridge forming gonads and nephrogenic cord forming mesonephros of the urinary apparatus. The genital ridge with primordial germ cells (PGC) extends from the upper thoracic region to the level of the cloaca, but true gonads develop through the middle area only and descends from the lumbar area (ventromedial to the mesonephros) to the future scrotum (9–12<sup>th</sup> weeks). The pathologic PGC ectopic localization during migration causes EGGCT. The metanephros from nephrogenic cord in the sacral region ascends passively due to differential growth of the lumbar and sacral regions from the kidneys (6–9<sup>th</sup> weeks). The abnormal fusion of lower poles of kidneys during ascent form HSK.<sup>[5]</sup> Therefore, the index case presents a hypothesis that two simultaneously related events occurring during early organogenesis may

be related. It will be interesting to know whether this was just incidental or there exists a true association.

The primary treatment for EGGCT is cisplatin-based chemotherapy followed by surgical resection of the residual tumor.<sup>[1]</sup> Cisplatin is known for inducing nephrotoxicity with dyselectrolytemia.<sup>[6]</sup> The degree of injury to the kidneys is dose dependent, and changes may persist for years after treatment. This has been abrogated by adequate pre-treatment hydration, chloride diuresis and administration of cisplatin in saline over 4–6 h. Carboplatin is an analogue of cisplatin developed as a less nephrotoxic alternative but was not found to be equipotent.<sup>[1]</sup> The standard of care, Bleomycin, Etoposide and Cisplatin (BEP), are more nephrotoxic and associated with pulmonary complications.<sup>[1]</sup> Patients with HSK are known to have renal problems affecting their function due to repeated infections and calculi.<sup>[5]</sup> As this was a case of mediastinal EGGCT and post-chemotherapy thoracic surgery was expected, BEP was avoided and TIP was used.<sup>[1,7]</sup> All precautions required during cisplatin therapy were taken in order to avoid renal injury. Serial monitoring of serum electrolytes and renal function show no abnormalities till date.

To summarize, our patient presents an unusual case of embryological association of mediastinal EGGCT with HSK and warrants future look out for such associations. It also highlights the important option of using TIP as primary chemotherapy in mediastinal EGGCT patients. Patients receiving nephrotoxic drugs should be managed

cautiously with serial monitoring of renal functions and electrolytes.

## REFERENCES

1. Pliarchopoulou K, Pectasides D. First-line chemotherapy of non-seminomatous germ cell tumors (NSGCTs). *Cancer Treat Rev* 2009;35:563-9.
2. Johnson KJ, Ross JA, Poynter JN, Linabery AM, Robison LL, Shu XO. Paediatric germ cell tumours and congenital abnormalities: Children's Oncology Group study. *Br J Cancer* 2009;101:518-21.
3. Mochizukia K, Ohnoa Y, Tokai T. Congenital intrarenal teratoma arising from a horseshoe kidney. *J Pediatr Surg* 2006;41;1313-15
4. Available from: <http://www.embryology.ch/anglais/ugenital/embryon01.html> [Last accessed on 2011 June].
5. Available from: <http://www.embryology.ch/anglais/ugenital/diffmorpho04.html> [Last accessed on 2011 June]
6. Yao X, Panichpisal K, Kurtzaman N. Cisplatin nephrotoxicity: A review. *Am J Med Sci* 2007;334:115-24.
7. Bokemeyer C, Schleucher N, Metzner B, Thomas M, Rick O, Schmoll HJ, *et al.* First-line sequential high-dose VIP chemotherapy with autologous transplantation for patients with primary mediastinal nonseminomatous germ cell tumours: a prospective trial. *Br J Cancer* 2003;89:29-35.

**How to cite this article:** Nachankar A, Krishnatry R, Munshi A, Prabhash K, Pradip PB, Pramesh CS, *et al.* Unusual coexistence of a renal anomaly and germ cell tumor: An embryonal happenstance?. *Indian J Med Paediatr Oncol* 2012;33:179-81.  
**Source of Support:** Nil, **Conflict of Interest:** None declared.

## Staying in touch with the journal

### 1) Table of Contents (TOC) email alert

Receive an email alert containing the TOC when a new complete issue of the journal is made available online. To register for TOC alerts go to [www.ijmpo.org/signup.asp](http://www.ijmpo.org/signup.asp).

### 2) RSS feeds

Really Simple Syndication (RSS) helps you to get alerts on new publication right on your desktop without going to the journal's website. You need a software (e.g. RSSReader, Feed Demon, FeedReader, My Yahoo!, NewsGator and NewzCrawler) to get advantage of this tool. RSS feeds can also be read through FireFox or Microsoft Outlook 2007. Once any of these small (and mostly free) software is installed, add [www.ijmpo.org/rssfeed.asp](http://www.ijmpo.org/rssfeed.asp) as one of the feeds.