

Glioblastoma multiforme in conus medullaris with intracranial metastasis after postoperative adjuvant therapy

Chengrui Yan, MD^a, Xiangyi Kong, MD^{a,b}, Hua Yin, MD^a, Yu Wang, MD^a, Huayu He, MD^a, Hui Zhang, MD^c, Jun Gao, MD, PhD^a, Yongning Li, MD^a, Wenbin Ma, MD^{a,*}

Abstract

Spinal glioblastoma multiforme is not common among spinal cord tumors. According to our literature review, only 27 cases originating from the conus medullaris were reported. We herein reported a case of a 10-year-old child diagnosed with glioblastoma multiforme. The patient received adjuvant radiotherapy and standard temozolomide chemotherapy after total excision. Intracranial lesions were found 1 month after postoperative adjuvant therapy. We described the clinical characteristics and postoperative therapy of the patient, and reviewed all of the published cases of conus medullaris glioblastoma. Location, age, leptomeningeal spread, and secondary hydrocephalus may be predictive factors. Immunohistochemical factors such as p53 and Ki-67 are also important. Combined treatment of surgery and postoperative adjuvant therapy is commonly used, but is controversial.

Abbreviations: CgA = chromograin A, CNS = central nervous system, CSF = cerebrospinal fluid, EGFR = epidermal growth factor receptor, GBM = glioblastoma multiforme, GFAP = glial fibrillary acidic protein, MRI = magnetic resonance imaging, NF = neurofilament, NSE = neurone specific enolase, PNET = primitive neuroectodermal tumor, TMZ = temozolomide, WHO = World Health Organization.

Keywords: conus medullaris, immunohistochemistry, predictive factor, spinal glioblastoma multiforme, treatment

1. Introduction

In adults, spinal cord tumors mostly originate from extramedullary tumors (almost 80%),^[1] whereas in children, the rate of

primary spinal tumor is up to 35%.^[2] Among these neoplastic spinal lesions in children, high-grade glioma is relatively rare (roughly 1%-3%). Spinal glioblastoma multiforme (GBM), defined as World Health Organization (WHO) IV in astrocytoma, is a highly malignant central nervous system (CNS) tumor that is clinically, histologically, and genetically heterogeneous.^[3] A survey in 1989 revealed that spinal GBM accounted for 0.2% of all GBM and 1.4% of spinal glioma.^[4] The total number of cases reported in the literature was less than 200.^[5] According to the data in a single institution, spinal cord GBM accounted for only 1% of patients with intramedullary neoplasms.^[5] Spinal GBM accounted for 7.5% of intramedullary glioma, and only 1.5% of all spinal tumors.^[6] As we present a rare case of GBM located in conus, an effort was made to search for cases of conus GBM published ever (Table 1), to detect some similarities and to learn more about metastasis, pathology, and treatment.

2. Case presentation

A 10-year-old Chinese boy, without any past medical history, reported a 3-week history of weakness and a subsequent appearance of paresthesia of both lower limbs. He also complained of lower back pain with radiation to both legs, urinary disturbance, and weight loss. His examination of strength demonstrated a 3/5 at right leg and 4/5 at left leg. Sensory examination was significant for decreased sensation in both legs, whereas right leg was worse. His reflex was weakened at left patella and ankle, and was absent at right. Bilateral hyperreflexia were presented of the lower limbs. There were no neurologic abnormalities of the upper limbs and cranial nerves.

Magnetic resonance imaging (MRI) revealed an ill-defined intramedullary mass filled the spinal canal between T11 and L1 (Fig. 1A and B) with inhomogeneous enhancement of the tumor area (Fig. 1C and D). Based on these findings, glioma was considered.

Editor: Laszlo Geza Boros.

C.Y. and X.K. contributed equally to this article.

Funding: This study was supported by Chinese Scholarship Council, Ministry of Education, P.R. China. This study was also supported by Research Special Fund for Public Welfare Industry of Health (Project No. 201402008), Peking Union Medical College Youth Research Funds (2016) (Project No. 3332016010; Grant recipient: X.K.), and Peking Union Medical College Graduate Student Innovation Fund (2015) (Project no. 2015-1002-02-09; Grant recipient: X.K.). The funders had no role in study design, data collection and analysis, decision to publish, or preparation of the manuscript.

Conflicts of interest: We have no financial competing interests to declare. In relation to the manuscript, we do not have political, personal, religious, ideological, academic, intellectual, commercial competing interests to declare.

^a Department of Neurosurgery, Peking Union Medical College Hospital, Chinese Academy of Medical Sciences, No. 1 Shuaifuyuan, Dongcheng District, Beijing, P.R. China, ^b Department of Anesthesia, Critical Care and Pain Medicine, Massachusetts General Hospital, Harvard Medical School, Harvard University, MA, ^c Department of Pathology, Peking Union Medical College Hospital, Chinese Academy of Medical Sciences, No. 1 Shuaifuyuan, Dongcheng District, Beijing, P.R. China.

* Correspondence: Wenbin Ma, Department of Neurosurgery, Peking Union Medical College Hospital, Chinese Academy of Medical Sciences, No. 1 Shuaifuyuan, Dongcheng District, Beijing 100730, P.R. China (e-mail: mawb2001@hotmail.com).

Copyright © 2017 the Author(s). Published by Wolters Kluwer Health, Inc. This is an open access article distributed under the Creative Commons Attribution License 4.0 (CCBY), which permits unrestricted use, distribution, and reproduction in any medium, provided the original work is properly cited.

Medicine (2017) 96:13(e6500)

Received: 19 October 2016 / Received in final form: 6 March 2017 / Accepted: 7 March 2017

<http://dx.doi.org/10.1097/MD.0000000000006500>

Table 1

Clinical features of conus medullaris glioblastoma reported in previous literatures.

No.	First author, year	Age/sex	Surgery	Radiotherapy and proposal	Chemotherapy	Metastasis	Survival time, mos	Other features
1	Eden ^[7]	19/M	Biopsy	No	No	Subarachnoid space Interpeduncular space Cerebellum	7	CSF protein increased
2	O'Connell ^[8]	16/M	Biopsy	Yes 7500r	No	Subarachnoid space Ventricle	16	Complete subarachnoid block
3	Tashiro ^[9]	12/F	PR	No	No	Subarachnoid space Cerebellum Hypothalamus Thalamus Brain stem	11	No article available
4	Andrews ^[10]	45/M	STR	Yes 5000r/T12	No	Septal region Ventricle	13	Hydrocephalus
5	Cohen ^[11]	16/F	TR	Yes	No	Septum	6	Hydrocephalus
6	Cohen ^[11]	14/M	TR	Unknown Yes	No	Intracranial	4	Hydrocephalus
7	Cohen ^[11]	19/M	TR	Yes	No	—	17	Hydrocephalus
8	Kawanishi ^[12]	50/M	PR	Yes 40 Gy	No	Cerebellum Sylvian fissure Cingulated gyrus	25	Hydrocephalus
9	Shirato ^[35]	35/F	PR	Yes 65 Gy	Yes ACNUVCR	—	58	—
10	Strik ^[28]	31/F	STR	Yes 45 Gy/D8–L1 +9 Gy/tumor	No	Cerebellar hemisphere Suprasellar region	15	—
11	Scarrow ^[13]	62/M	Biopsy	Yes 48 Gy/T9–L3	No	—	4+	—
12	Santi ^[32]	23/M	STR/PR	No	No	—	8	—
13	Banczerowski ^[14]	56/M	Biopsy	Yes 20–36 Gy	No	—	16	—
14	Banczerowski ^[14]	41/M	STR	No	No	—	3	—
15	Banczerowski ^[14]	14/F	STR	No	Yes BCNU	—	11	—
16	Banczerowski ^[14]	42/M	STR	Yes 36 Gy	Yes MTX	—	10	—
17	Medhkour ^[15]	20/M	STR × 2	Yes Unknown	No	Pontomedullary junction Cerebellum, suprasellar cistern Left lateral ventricle Posterior fossa	11	—
18	Stecco ^[16]	14/M	STR	No	No	Suprasellar cistern	10	—
19	Elsamaloty ^[17]	20/M	STR × 2	Yes Unknown	No	Ventricle Cerebellar Brainstem	10	—
20	Bonde ^[18]	16/M	STR	Yes Unknown	No	Simultaneous cervical-medullary lesion	6	—
21	Choi ^[19]	46/M	STR	Yes	Yes	—	8+	Masque as high lumbar disk herniation
22	Sun ^[20]	14/M	STR	Unknown No	TMZ No	Iliac and femoral bone Lateral cerebral ventricle	16	Die of cerebral herniation
23	Sanborn ^[21]	36/F	STR	Yes Unknown	Yes TMZ	—	—	—
24	Mayer ^[24]	28/F	STR × 2	Yes 30 Gy/T9–L3	Yes PCB CCNU VCR BCNU	—	67/d	No lumbar puncture
25	Mori ^[1]	10/F	Biopsy	Yes 18 Gy/CM +18 Gy/whole	Yes VCR CTX VP-16 DDP MTX	Holocordal Cervicomedullary junction Pituitary stalk	14	Secondary hydrocephalus
26	Gee ^[22]	9/F	STR	Yes Unknown	Yes TMZ	T6–T8 vertebral bodies	10	—
27	Cacchione ^[3]	4/M	STR	Yes 4500 cGy/CM	Yes TMZ	—	52+	—
28	The present case	10/M	TR	Yes 15.3 Gy/whole +30.6 Gy/CM	Yes TMZ	Left apical lobe, right cerebellar vermis, corpus callosum, basal ganglia and lateral cerebral ventricle	14	CSF protein increased

ACNU = Nimustine, BCNU = Carmustine, CCNU = Lomustine, CM = Conus medullaris, CSF = cerebrospinal fluid, CTX = Cyclophosphamide, DDP = Cisplatin, MTX = Methotrexate, PCB = Procarbazine, PR = partial resection, STR = Subtotal resection, TMZ = temozolomide, TR = total resection, VCR = Vincristine.

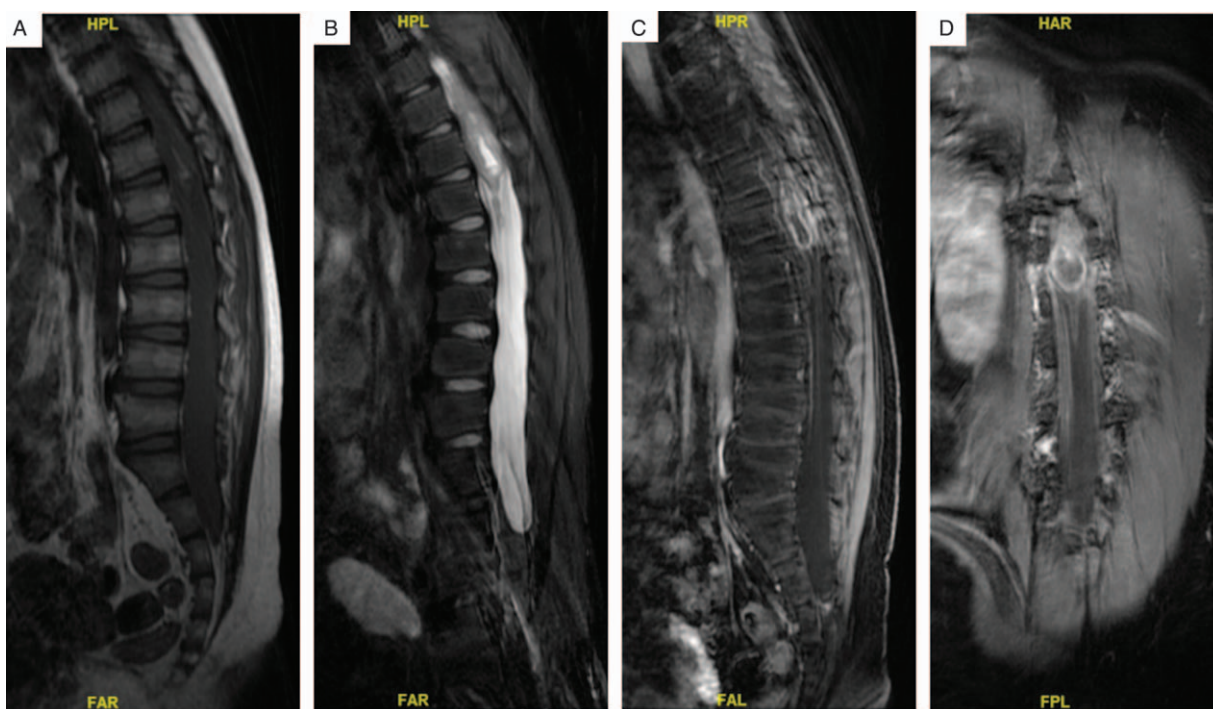


Figure 1. (A, B) T1-weighted and T2-weighted sagittal magnetic resonance imaging (MRI) without contrast shows an intramedullary lesion extended from T11 to L1. (C) T1-weighted sagittal MR image with contrast reveals heterogeneous enhancement of the conus lesion. (D) T1-weighted coronal MR image with contrast.

Open total excision was conducted under general anesthesia. The procedure presented a hypertonic dura. After opening the dura, the tumor was located in the conus medullaris, highly vascularized, and ill-defined.

Histopathologic examination, including immunohistochemical staining, was performed, and the diagnosis of GBM was made according to the WHO criteria (Fig. 2A and B). However, part of the tumor showed the structure of primitive neuroectodermal tumor (PNET). Immunohistochemistry showed positivity for glial fibrillary acidic protein (GFAP) (Fig. 2C), S100 (Fig. 2D), p53 (Fig. 2E), Ki-67 (proliferation index 60%; Fig. 2F), epidermal growth factor receptor (EGFR) (Fig. 2G), neuron-specific enolase (NSE) (Fig. 2H), CD34 (Fig. 2I), CD56 (Fig. 2J), and β -catenin (Fig. 2K), and negativity for chromograin A (CgA), AE1/AE3, CD99, and neurofilament (NF). The mutation or amplification of EGFR is commonly observed in malignant gliomas, and these modifications are associated with increased cell proliferation and radiation resistance. NSE is a specific protein of neuron; high serum levels of NSE were noticed in the patients with malignant gliomas. CD34 and CD56 reflect densities of vessel and blood supply, whose overexpressions are associated with higher WHO grades of gliomas. CD34 may serve as a potential diagnostic and prognostic marker, or it could be a useful therapy target. Beta-catenin is a proto-oncogene. Mutations of this gene are commonly found in a variety of cancers, including GBM. CD99 is more expressed in malignant gliomas than in the brain, and such overexpression results in higher levels of invasiveness and lower rates of survival.

The plain and enhanced MRI of head revealed no abnormality. Lumbar puncture was also conducted, and the protein concentration in the cerebrospinal fluid (CSF) was high and the glucose concentration was low. No malignant cells were found in the CSF.

The patient underwent radiotherapy for the whole brain and spinal cord (15.3 Gy in 9 fractions), and also for the conus medullaris lesion (T8–L4, 30.6 Gy in 18 fractions). As for chemotherapy, standard temozolomide (TMZ)-stupp regimen (TMZ 150 mg/m² for 5 days during first 28-day and 200 mg/m² for 5 days during next sixth 28-day cycles) was performed. After these adjuvant therapies, this patient showed improved length of 4/5 at right leg and 5/5 at left leg. Meanwhile, reflex of left patella and ankle recovered, and reflex of right leg became better.

After 1 month from last regimen of chemotherapy (10 months from operation), a follow-up MRI of head with gadolinium enhancement revealed multiple intracranial metastasis. New lesions were located in left apical lobe, right cerebellar vermis, corpus callosum, basal ganglia, and lateral cerebral ventricle (Fig. 3). We deemed them as the metastatic lesions from the tumor in conus medullaris. The patient and his parents refused further invasive treatments; thus the exact pathology of the intracranial lesions could not be confirmed. The patient died 14 months after his surgery.

3. Discussion

Primary spinal GBM located in conus medullaris is relatively rare; usually this kind of disease has a favor for the thoracic, cervical, or the conjunction area. In a literature review in 2011, the author found that conus medullaris is also a location where spinal GBM may generate, although it is not that usual.^[21] A study retrospect 128 cases from 1938 to 2015 performed that 42.2% of spinal GBM were located in thoracic spine and 29.7% were in cervical spine. Meanwhile, tumors located in the conus level only accounted for 14%, according to this study.^[23]

Generally, the survival time of spinal GBM was limited to 12 to 24 months. Moreover, GBM of the conus medullaris ranged from 4 to 16 months. The mean follow-up time (most are equal to

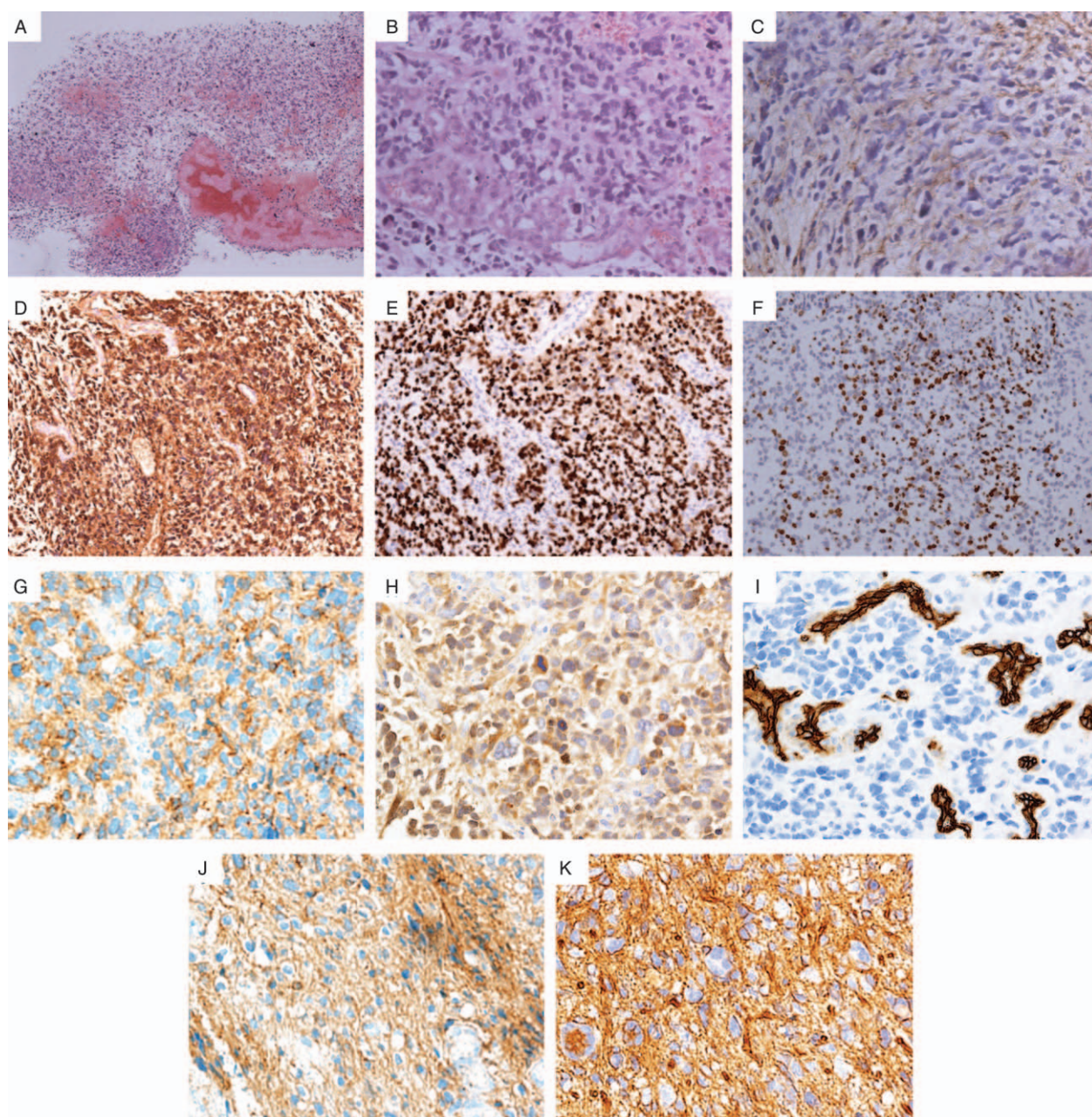


Figure 2. (A) Tumor cells were pleomorphic and patchily distributed (H&E stain; 20 \times). (B) Densely cellular neoplasm, with multiple pleomorphic cells, proliferation of vascular endothelial cells, and karyokinesis (H&E stain; 200 \times). (C) Immunohistochemistry shows positivity for glial fibrillary acidic protein (GFAP). (D) The tumor shows diffused S100 positivity. (E) The tumor shows positivity of p53. (F) The tumor shows a high Ki-67 immunohistochemical nuclear labeling index of 60%. Epidermal growth factor receptor (EGFR) (G), NSE (H), CD34 (I), CD56 (J), and β -catenin (K) were also positive (20 \times).

survival time) in our study was 18.26 months, among which the longest one was 67 months.^[24] Konar et al^[23] found that location of the tumor had no influence to overall survival, and patients with conus and thoracic tumors were less likely to die at 6 months. As to the influence of age, people have same opinions that adults (over 18 years) were more likely to have longer survival periods.^[23,25] But Wolff et al^[26] found that in children, age less than 5 years may be a relatively positive prognostic factor.

Among these predictive factors, Konar et al thought leptomeningeal spread is the poor prognostic factor for survival. The rate of CSF dissemination reaches up to 58% in spinal GBM, in comparison with 23% to 27% in cerebral GBM.^[27] In Konar

et al's study, 60% of the patients had CSF dissemination and 76% had brain metastasis.^[23] We found that in those 28 cases of conus GBM, 16 cases mentioned tumor metastasis, and among these, 14 patients had brain metastasis. It is easily recognized that brain metastasis occurred in most spinal GBM. Patchy nodular lesions were discovered intracranially, whereas the specific locations differed. According to our unpublished study, wall of the ventricles could become a relatively welcome "home" of new lesions, considering the anatomy. Strik et al^[28] noted that p53 may be a predictor of subsequent brain metastasis in spinal GBM. But we lack more evidence about p53 accumulation for the reason that few cases conducted immunohistochemical study. Of note, regarding the pathology of the primary lesion in our case,

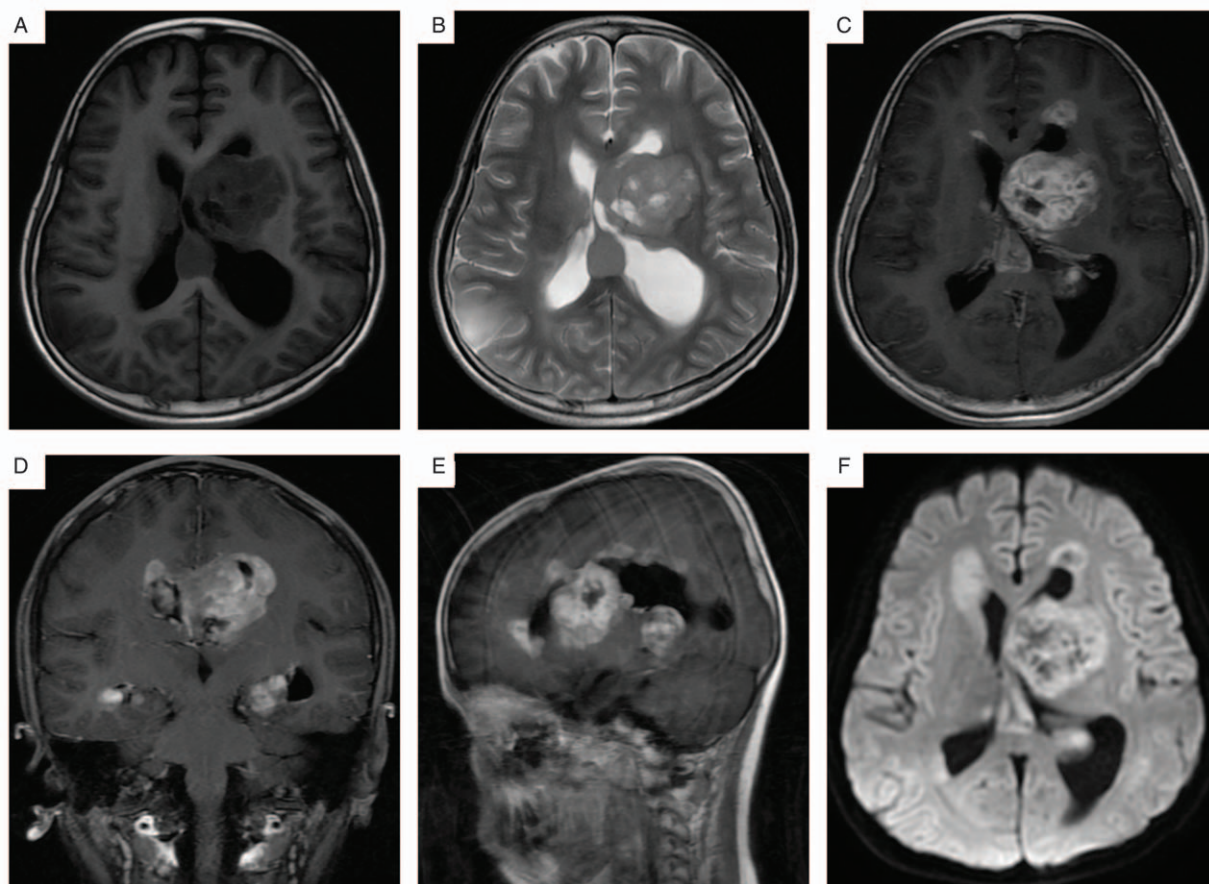


Figure 3. Follow-up magnetic resonance imaging (MRI) after 10 months from operation demonstrates intracranial metastasis. (A, B) T1-weighted and T2-weighted axial MR images show new lesions located in lateral cerebral ventricle and enlargement of ventricle. (C) T1-weighted sagittal MR image with contrast reveals heterogeneous enhancement. (D, E) Coronal and sagittal sections display several metastases. (F) Apparent diffusion coefficient (ADC) mapping shows heterogeneous signal.

part of it showed the structure of PNET. In fact, primary PNET of the spine is unusual, with very few cases reported in the literature. Occurrence of primary spinal PNET in an intramedullary location is further uncommon. Because the patient and his parents refused further invasive treatments after the discovery of intracranial lesions, their exact pathology could not be confirmed.

Another important factor of overall survival period is secondary hydrocephalus. Six of the 28 patients in our study developed hydrocephalus. Higher concentration of protein in the CSF was thought to be related with hydrocephalus. Our patient also demonstrated to contain more protein in CSF, but he did not develop hydrocephalus. It is possible that the tumor had not blocked the subarachnoid completely. Most of the cases we found did not perform a lumbar puncture or did not display the results, but we can speculate that higher protein may be a sign of CSF dissemination.

For the reason that spinal GBM was not common in population, studies describing the histomorphological and molecular genetic alterations are not as many as cerebral GBM. Govindan et al^[29] had the opinion that histopathological characteristics of spinal GBM are comparable with cerebral glioblastoma. In their 6-case study, GFAP was 100% positive, whereas p53 immunoreactivity was 83.3% (5 of 6).^[29] Another case series study concluded that GFAP and p53 immunoreactivity was seen in all cases.^[30] Studies also showed that p53 expression

is seen in majority of glioblastoma. The pathology of our case was definitely positive for GFAP and p53, matching with results of those research. Eleven patients had immunochemical results in the list, and 8 of them expressed GFAP, but only 4 mentioned reactivity of p53. Even though the expression of p53 was not as expected, we are of the opinion that it may be a result of lack of data. Proliferative marker Ki-67 index/MIB-1 labeling should be a complement of pathologic features of GBM. It has been reported that Ki-67 index ranged from 12% to 34%.^[30] The Ki-67 index ranged from 10% to 30% in our case series, with the values being comparable with those of other studies.^[31] However, the boy in our case showed a very high Ki-67 index of 60%. It may be a hint why the patient had brain metastasis after radiochemotherapy, even though the prognostic value of Ki-67 was debatable.^[32]

Treatment of spinal GBM nowadays usually combines surgery with radiotherapy; most of the time chemotherapy is also considered. As for radiotherapy, although researchers did not find significant linkage between radiation and prognosis,^[33] more people believe radiation can increase survival time in malignant spinal tumor.^[25] But the optimal dosage is uncertain, although it is almost always used. It is reported that radiotherapy can prolong survival in some cases.^[34] Shirato et al^[35] recommended that radiation can be given in 2.5-Gy fractions 4 times weekly to total doses of 40 to 50 Gy over 4 to 5 weeks. Our patient received a total dose of 45.9 Gy for conus medullaris and an additional

radiation to the whole brain. However, the tumor still metastasized to intracranial spaces. If patient tolerates the treatment well, Minehan et al^[36] found that higher doses (59.4 Gy) could perform better in symptom improvement. Shirato et al also reported a long survival case for 58 months with a total radiation dose of 65 Gy, but in consideration of adverse effects on growing and fertility, especially in teenage, we have to control the total dose of radiation.

Whether chemotherapy is required or not remains controversial, but a retrospective series of 8 cases proved that both TMZ and bevacizumab were useful in improving survival.^[37] As TMZ was recognized to be effective in intracranial GBM,^[38] it is also generally used as adjuvant therapy to surgery and radiation in spinal GBM. For patients with spinal GBM, it is recommended that TMZ be used concomitantly during and after radiotherapy, but at different dosage. In a study consisting of 6 patients, TMZ seemed to prolong survival time of primary spinal GBM.^[39] A patient without CSF dissemination received 7 cycles of TMZ,^[41] the same regimen as in the patient described in our case. Unfortunately, both these patients revealed new intracranial lesions during follow-up. Our patient did not receive any salvage therapy, but the outcome was exactly the same as that of the patient mentioned. Despite the discouraging results, Konar et al's analysis revealed that surgical combined radiotherapy and chemotherapy were significantly associated with a significant chance of mortality at 6 months.^[23] Chamberlain and Johnston^[40] found bevacizumab may have some effects in those who failed to respond to radiation and TMZ therapy. In our analysis, patients who received either adjuvant radiotherapy or chemotherapy had a better survival trend than those with surgery alone.

With the development of molecular therapy, tumors can be investigated more and more thoroughly. In a study by Sharma et al,^[41] it was shown that children may have different molecular signature from adults. So we can have the confidence that target therapies may become a powerful measure in treating spinal GBM.

4. Conclusions

Spinal GBM located in conus medullaris is rare. Several factors may be related to intracranial metastasis and prognosis. Immunohistochemistry currently plays a crucial role in diagnosis of CNS tumors. Adjuvant treatment composed of radiotherapy and chemotherapy are still under exploration.

Acknowledgments

We would like to thank our colleagues from the Department of Neurosurgery, Peking Union Medical College Hospital, Chinese Academy of Medical Sciences, and Peking Union Medical College, and the Department of Anesthesia, Critical Care and Pain Medicine, Massachusetts General Hospital, Harvard Medical School, Harvard University.

References

- Mori K, Imai S, Shimizu J, et al. Spinal glioblastoma multiforme of the conus medullaris with holocordal and intracranial spread in a child: a case report and review of the literature. *Spine J* 2012;12:e1–6.
- Winograd E, Pencovich N, Yalon M, et al. Malignant transformation in pediatric spinal intramedullary tumors: case-based update. *Childs Nerv Syst* 2012;28:1679–86.
- Cacchione A, Mastronuzzi A, Cefalo MG, et al. Pediatric spinal glioblastoma of the conus medullaris: a case report of long survival. *Chin J Cancer* 2016;35:44.
- Helseth A, Mork SJ. Primary intraspinal neoplasms in Norway, 1955 to 1986. A population-based survey of 467 patients. *J Neurosurg* 1989;71:842–5.
- Yanamadala V, Koffie RM, Shankar GM, et al. Spinal cord glioblastoma: 25 years of experience from a single institution. *J Clin Neurosci* 2016;27:138–41.
- Raco A, Esposito V, Lenzi J, et al. Long-term follow-up of intramedullary spinal cord tumors: a series of 202 cases. *Neurosurgery* 2005;56:972–81. 972–981.
- Eden KC. Dissemination of a glioma of the spinal cord in the leptomeninges. *Brain* 1938;61:298–310.
- O'Connell JEA. The subarachnoid dissemination of spinal tumour. *Journal of Neurology, Neurosurgery & Psychiatry* 1946;9:55–62.
- Tashiro K, Tachibana S, Tsura M. Clinicopathological studies of spinal cord neoplasm with disseminating intracranial metastasis possibly producing akinetic mutism. *No to shinkei= Brain and nerve* 1976;28:1311–8.
- Andrews AA, Enriques L, Renaudin J, et al. Spinal intramedullary glioblastoma with intracranial seeding: Report of a case. *Archives of neurology* 1978;35:244–5.
- Cohen AR, Wisoff JH, Allen JC, et al. Malignant astrocytomas of the spinal cord. *Journal of neurosurgery* 1989;70:50–4.
- Kawanishi M, Kuroiwa T, Nagasawa S, et al. A case of spinal glioblastoma with intracranial dissemination. *No shinkei geka. Neurological surgery* 1993;21:1109–12.
- Scarrow AM, Rajendran P, Welch WC. Glioblastoma multiforme of the conus medullaris. *Clinical neurology and neurosurgery* 2000;102:166–7.
- Banczerowski P, Simó M, Sipos L, et al. Primary intramedullary glioblastoma multiforme of the spinal cord: report of eight cases. *Ideggyogy Sz* 2003;56:28–32.
- Medhkour A, Chan M. Extremely rare glioblastoma multiforme of the conus medullaris with holocord and brain stem metastases, leading to cranial nerve deficit and respiratory failure: a case report and review of the literature. *Surgical neurology* 2005;63:576–82.
- Stecco A, Quirico C, Giampietro A, et al. Glioblastoma multiforme of the conus medullaris in a child: description of a case and literature review. *American journal of neuroradiology* 2005;26:2157–60.
- Elsamaly H, Zenooz NA, Mossa-Basha M. Glioblastoma multiforme (GBM) of the conus medullaris with brain and brain stem metastases. *European Journal of Radiology Extra* 2006;58:59–62.
- Bonde V, Balasubramaniam S, Goel A. Glioblastoma multiforme of the conus medullaris with holocordal spread. *Journal of Clinical Neuroscience* 2008;15:601–3.
- Choi WC, Lee JH, Lee SH. Spinal cord glioblastoma multiforme of conus medullaris masquerading as high lumbar disk herniation. *Surgical neurology* 2009;71:234–7.
- Sun J, Wang Z, Li Z, et al. Microsurgical treatment and functional outcomes of multi-segment intramedullary spinal cord tumors. *Journal of Clinical Neuroscience* 2009;16:666–71.
- Sanborn MR, Pramick M, Brooks J, et al. Glioblastoma multiforme in the adult conus medullaris. *J Clin Neurosci* 2011;18:842–3.
- Gee TS, Ghani AR, Idris B, et al. Case report: a rare case of pediatric conus medullaris glioblastoma multiforme. *Med J Malaysia* 2012;67:439.
- Konar SK, Maiti TK, Bir SC, et al. Predictive factors determining the overall outcome of primary spinal glioblastoma multiforme: an integrative survival analysis. *World Neurosurg* 2016;86:341–8.
- Mayer RR, Warmouth GM, Troxell M, et al. Glioblastoma multiforme of the conus medullaris in a 28-year-old female: a case report and review of the literature. *Clin Neurol Neurosurg* 2012;114:275–7.
- Adams H, Avendano J, Raza SM, et al. Prognostic factors and survival in primary malignant astrocytomas of the spinal cord: a population-based analysis from 1973 to 2007. *Spine (Phila Pa 1976)* 2012;37:E727–35.
- Wolff B, Ng A, Roth D, et al. Pediatric high grade glioma of the spinal cord: results of the HIT-GBM database. *J Neurooncol* 2012;107:139–46.
- Tendulkar RD, Pai PA, Wu S, et al. Irradiation of pediatric high-grade spinal cord tumors. *Int J Radiat Oncol Biol Phys* 2010;78:1451–6.
- Strik HM, Effenberger O, Schafer O, et al. A case of spinal glioblastoma multiforme: immunohistochemical study and review of the literature. *J Neurooncol* 2000;50:239–43.
- Govindan A, Chakraborti S, Mahadevan A, et al. Histopathologic and immunohistochemical profile of spinal glioblastoma: a study of six cases. *Brain Tumor Pathol* 2011;28:297–303.
- Ozgiray E, Akay A, Ertan Y, et al. Primary glioblastoma of the medulla spinalis: a report of three cases and review of the literature. *Turk Neurosurg* 2013;23:828–34.

- [31] Grisold W, Pernetzky G, Jellinger K. Giant-cell glioblastoma of the thoracic cord. *Acta Neurochir (Wien)* 1981;58:121–6.
- [32] Santi M, Mena H, Wong K, et al. Spinal cord malignant astrocytomas. Clinicopathologic features in 36 cases. *Cancer* 2003;98:554–61.
- [33] Lam S, Lin Y, Melkonian S. Analysis of risk factors and survival in pediatric high-grade spinal cord astrocytoma: a population-based study. *Pediatr Neurosurg* 2012;48:299–305.
- [34] Ciappetta P, Salvati M, Capoccia G, et al. Spinal glioblastomas: report of seven cases and review of the literature. *Neurosurgery* 1991;28:302–6.
- [35] Shirato H, Kamada T, Hida K, et al. The role of radiotherapy in the management of spinal cord glioma. *Int J Radiat Oncol Biol Phys* 1995;33:323–8.
- [36] Minehan KJ, Brown PD, Scheithauer BW, et al. Prognosis and treatment of spinal cord astrocytoma. *Int J Radiat Oncol Biol Phys* 2009;73:727–33.
- [37] Kaley TJ, Mondesire-Crump I, Gavrilovic IT. Temozolomide or bevacizumab for spinal cord high-grade gliomas. *J Neurooncol* 2012;109:385–9.
- [38] Stupp R, Mason WP, van den Bent MJ, et al. Radiotherapy plus concomitant and adjuvant temozolomide for glioblastoma. *N Engl J Med* 2005;352:987–96.
- [39] Kim WH, Yoon SH, Kim CY, et al. Temozolomide for malignant primary spinal cord glioma: an experience of six cases and a literature review. *J Neurooncol* 2011;101:247–54.
- [40] Chamberlain MC, Johnston SK. Recurrent spinal cord glioblastoma: salvage therapy with bevacizumab. *J Neurooncol* 2011;102:427–32.
- [41] Sharma S, Free A, Mei Y, et al. Distinct molecular signatures in pediatric infratentorial glioblastomas defined by aCGH. *Exp Mol Pathol* 2010;89:169–74.