



Since January 2020 Elsevier has created a COVID-19 resource centre with free information in English and Mandarin on the novel coronavirus COVID-19. The COVID-19 resource centre is hosted on Elsevier Connect, the company's public news and information website.

Elsevier hereby grants permission to make all its COVID-19-related research that is available on the COVID-19 resource centre - including this research content - immediately available in PubMed Central and other publicly funded repositories, such as the WHO COVID database with rights for unrestricted research re-use and analyses in any form or by any means with acknowledgement of the original source. These permissions are granted for free by Elsevier for as long as the COVID-19 resource centre remains active.



## Original article

## Post-COVID-19 symptoms 6 months after acute infection among hospitalized and non-hospitalized patients

Maddalena Peghin<sup>1,\*</sup>, Alvisa Palese<sup>2</sup>, Margherita Venturini<sup>2</sup>, Maria De Martino<sup>3</sup>,  
Valentina Gerussi<sup>1</sup>, Elena Graziano<sup>1</sup>, Giulia Bontempo<sup>1</sup>, Francesco Marrella<sup>1</sup>,  
Alberto Tommasini<sup>4,5</sup>, Martina Fabris<sup>6,7</sup>, Francesco Curcio<sup>6,7</sup>, Miriam Isola<sup>3</sup>,  
Carlo Tascini<sup>1</sup>

<sup>1</sup> Infectious Diseases Division, Department of Medicine, University of Udine, Azienda Sanitaria Universitaria Friuli Centrale (ASUFC), Udine, Italy

<sup>2</sup> Department of Medical Sciences, University of Udine, Udine, Italy

<sup>3</sup> Division of Medical Statistic, Department of Medicine (DAME), University of Udine, 33100, Udine, Italy

<sup>4</sup> Institute for Maternal and Child Health – IRCCS “Burlo Garofolo”, Trieste, Italy

<sup>5</sup> University of Trieste, Trieste, Italy

<sup>6</sup> Institute of Clinical Pathology, Department of Laboratory Medicine, University of Udine, ASUFC, Udine, Italy

<sup>7</sup> Department of Medicine (DAME), University of Udine, Udine, Italy

## ARTICLE INFO

## Article history:

Received 4 March 2021

Received in revised form

20 May 2021

Accepted 22 May 2021

Available online 7 June 2021

Editor: J. Bielicki

## Keywords:

Chronic COVID

COVID survivors

COVID-19

Patients with post-COVID-19 syndrome

Long COVID

Post-COVID syndrome

SARS-CoV-2 antibodies

SARS-CoV-2 serology

## ABSTRACT

**Objectives:** To assess the prevalence of and factors associated with post-coronavirus disease 2019 (COVID-19) syndrome 6 months after the onset.

**Methods:** A bidirectional prospective study. Interviews investigated symptoms potentially associated with COVID-19 6 months after the disease onset of all consecutive adult inpatients and outpatients with COVID-19 attending Udine Hospital (Italy) from March to May 2020. IgG antibodies against Severe Acute Respiratory Syndrome Coronavirus 2 (SARS-CoV-2) were also evaluated 6 months after the onset of symptoms, at the time of the interview.

**Results:** A total of 599 individuals were included (320 female, 53.4%; mean age 53 years, SD 15.8) and interviewed 187 days (22 SD) after onset. The prevalence of post-COVID-19 syndrome was 40.2% (241/599). The presence of IgG antibodies was significantly associated with the occurrence of post-COVID-19 syndrome (OR 2.56, 95% CI 1.48–4.38,  $p$  0.001) and median SARS-CoV-2 IgG titres were significantly higher in patients with post-COVID-19 syndrome than in patients without symptoms (42.1, IQR 17.1–78.4 vs. 29.1, IQR 12.1–54.2 kAU/L,  $p$  0.004). Female gender (OR 1.55, 95% CI 1.05–2.27), a proportional increase in the number of symptoms at the onset of COVID-19 (OR 1.81, 95% CI 1.59–2.05) and ICU admission OR 3.10, 95% CI 1.18–8.11) were all independent risk factors for post-COVID-19 syndrome. The same predictors also emerged in a subgroup of 231 patients with the serological follow-up available at the time of the interview alongside the proportional increase in anti-SARS-CoV-2 IgG (OR 1.01, 95% CI 1.00–1.02,  $p$  0.04).

**Discussion:** Prospective follow-up could be offered to specific subgroups of COVID-19 patients, to identify typical symptoms and persistently high anti-SARS-CoV-2 IgG titres as a means of early detection of post-COVID-19 long-term sequelae. **Maddalena Peghin, Clin Microbiol Infect 2021;27:1507**

© 2021 European Society of Clinical Microbiology and Infectious Diseases. Published by Elsevier Ltd. All rights reserved.

## Introduction

Post-COVID-19 syndrome describing the experience of persistent symptoms after recovering from the initial acute COVID-19 has recently attracted increased attention [1,2] given that it might be expected according to previous coronavirus epidemics [3,4]. The

\* Corresponding author: Maddalena Peghin, Clinica di Malattie Infettive, Azienda Sanitaria Universitaria Friuli Centrale (ASUFC), Presidio Ospedaliero Universitario Santa Maria della Misericordia, Piazzale Santa Maria della Misericordia 15, 33010, Udine, Italy.

E-mail address: [maddalena.peghin@gmail.com](mailto:maddalena.peghin@gmail.com) (M. Peghin).

pathophysiology of post-viral syndromes has been reported to involve a complex interplay between the viral loads and the humoral and cellular immune responses that could elicit both direct non-immunological and indirect immune effects [3,5]. However, the available knowledge of post-COVID-19 syndrome is still poor and controversial due to the lack of a consensus definition [6], the heterogeneity of the investigated population and diagnostic follow-ups [1,2,7,8]. A better understanding of post-COVID-19 syndrome and the dynamics and the nature of immune response to SARS-CoV-2 infection might assist in identifying long-haulers and appropriate pathways of care. Therefore, the aim of this study was to comprehensively characterise predictors of post-COVID-19 syndrome, including the serological responses, among survivors.

## Material and methods

### Setting, patients and data collection

We performed a bidirectional cohort study design in a tertiary care teaching hospital (Udine, Italy, 1000 beds) designated as a regional centre for COVID-19 patients and serving approximately 350 000 citizens. The reference Ethics Committee (CEUR-2020-OS-219 and CEUR-2020-OS-205) approved the study and all procedures were in accordance with the ethical standards of the Health Care Trust.

A cohort of all consecutive adult in- and out-patients ( $\geq 18$  years) attending the Infectious Disease Department with a diagnosis of COVID-19 from 1 March to 30 May 2020 were eligible. Patients who were willing to participate were included and a database concerning their demographic, clinical and laboratory data was populated. Six months after disease onset (September and November 2020), patients were telephone interviewed by trained nurses with a pilot-tested questionnaire investigating specific persistent or emerging symptoms potentially associated with COVID-19. Participants were free to answer in their own words according to the patient-reported outcomes (PROs) framework [9]; the interview took from 10 to 30 minutes. Their narratives were categorized by four independent physicians: post-COVID-19 syndrome was defined as symptoms that developed during or after COVID-19, continued for  $\geq 12$  weeks, and were not explained by an alternative diagnosis. Furthermore, SARS-CoV-2 antibody concentrations were measured for a subgroup of patients who agreed to participate in a parallel study on monthly serological follow-up; available serological data at the time of the interview ( $\pm 15$  days) were also recorded in the database.

### Acute COVID-19 definitions

A patient with a positive nucleic acid amplification test (NAAT) for SARS-CoV-2 in respiratory tract specimens was considered a confirmed COVID-19 case whereas a suspected COVID-19 case was considered as having COVID-19 with a negative SARS-CoV-2 NAAT reporting laboratory or imaging findings and/or positive serology [11]. Based on the COVID-19 disease severity scale, patients were classified into five groups, from asymptomatic to critical disease [11]. Symptomatic and asymptomatic patients were categorized into three groups: (a) intensive care unit (ICU), (b) hospital-ward, and (c) outpatients, when they had been never hospitalized.

### Laboratory methods

Identifying cases with the COVID-19 virus was based on the detection of unique sequences of virus RNA by NAATs such as real-time PCR (RT-PCR) on respiratory samples. Cycle threshold (Ct) values of first positive NAAT were collected. Serial measurements of SARS-CoV-2 anti-nucleocapsid and anti-spike IgM/IgG were

obtained using iFlash-SARS-CoV-2 (Yhlo), a paramagnetic particle based chemiluminescence immunoassay (CLIA). According to the manufacturer's information, the IgM and IgG cut-off is 10.0 kAU/L. Ct, IgG and IgM were considered in order to identify associations, if any, between the anti-SARS-CoV-2 and post-COVID syndrome. Further test procedures are summarized in Table S2.

### Statistical analysis

Patients were divided into two groups (with or without post-COVID-19 syndrome) at the time of interview. Absolute values, percentages, mean and median (standard deviation (SD) or interquartile range (IQR)) were calculated. Categorical variables were compared using the chi-squared test or Fisher's exact test, while continuous variables were compared using a Student t-test or Mann–Whitney U test for two groups, one-way ANOVA or the Kruskal–Wallis test for more than two groups, according to the Shapiro–Wilk test establishing whether data were normally or non-normally distributed. A multivariable logistic regression was performed to explore variables associated with post-COVID-19 syndrome, estimating the odds ratios (OR; 95% CI). All clinically or microbiologically relevant variables or those which were significant at  $p \leq 0.10$  in univariable analysis were included, taking into account potential collinearities (e.g. the severity of acute COVID-19 and the ICU admission). Given that only 231 patients performed the serological follow-up at the time of interview, univariable and multivariable logistic regression was performed on this sub-group; moreover, this sub-group was compared with the remaining population (Tables S3–S5). Seronegative patients and those with seroreversion of IgM and IgG were excluded from the serological follow-up at the time of interview, but were included in the overall count only to evaluate the presence of IgG antibodies against SARS-CoV-2 6 months after the onset. Analyses were performed by STATA 16.

## Results

### Patients' baseline characteristics

Overall, during the study period, 1067 COVID-19 patients were diagnosed in our hospital (Fig. 1); a total of 231 out of 599 (38.6%) completed the serological follow-up at the time of the interview.

Baseline demographic and clinical characteristics are summarized in Table 1. In brief, the mean age was 53 years (SD 15.8; range 18–94), 320/599 (53.4%) were female and the majority (524/573, 91.4%) were native Italian. A total of 314/599 (52.4%) reported at

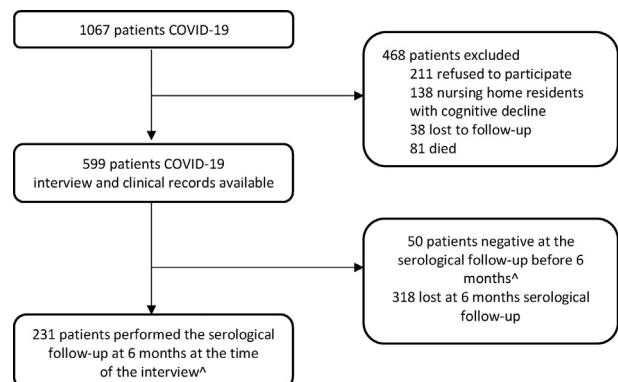


Fig. 1. Flow chart of in- and out-patients with COVID-19 attending the Infection Disease Department between March and May 2020. ^ CORMOR 3-4 protocol.

**Table 1**  
Post-COVID-19 syndrome according to patients' baseline characteristics (n = 599)

Post-COVID-19 syndrome <sup>a</sup>	Yes N = 241	No N = 358	P
<b>Gender, n (%)</b>			0.004
Female	146 (60.6)	174 (48.6)	
Male	95 (39.4)	184 (51.4)	
<b>Age group, n (%)</b>			0.22
18–40	50 (20.8)	91 (25.4)	
41–60	109 (45.2)	138 (38.6)	
>60	82 (34.0)	129 (36.0)	
<b>Ethnicity, n/N (%)</b>			0.74
Native Italian	215/235 (91.5)	309/338 (91.4)	
European	19/235 (8.1)	25/338 (7.4)	
Non-European	1/235 (0.4)	4/338 (1.2)	
<b>Smoking habit, n/N (%)</b>			0.33
Non-smoker	161 (66.8)	228/356 (64.0)	
Smoker	27 (11.2)	55/356 (15.5)	
Ex-smoker	53 (22.0)	73/356 (20.5)	
<b>Alcohol habit, n/N (%)</b>			0.35
Non-drinker	129 (53.5)	170/355 (47.9)	
Drinker	111 (46.1)	183/355 (51.5)	
Alcohol use disorder <sup>e</sup>	1 (0.4)	2/355 (0.6)	
<b>Work, n/N (%)</b>			0.32
Work in contact with public and HCWs	101/230 (43.9)	132/326 (40.5)	
Work not in contact with the public	68/230 (29.6)	84/326 (25.8)	
Retired	37/230 (16.1)	70/326 (21.5)	
Other	24/230 (10.4)	40/236 (12.3)	
<b>Co-morbidities, number, n (%)</b>			0.31
0	108 (44.8)	177 (49.4)	
1	74 (30.7)	101 (28.2)	
2	33 (13.7)	46 (12.8)	
3	15 (6.2)	22 (6.2)	
≥4	11 (4.6)	12 (3.4)	
<b>Co-morbidities, n (%)</b>			
Hypertension	52 (22.0)	83 (23.2)	0.64
Obesity	36 (14.9)	62 (17.3)	0.44
Diabetes	15 (6.2)	18 (5.03)	0.23
Chronic respiratory disease <sup>c</sup>	11 (4.6)	10 (2.8)	0.26
Cardiovascular disease <sup>b</sup>	1 (0.4)	6 (1.7)	0.25
Liver disease	8 (3.3)	2 (0.5)	0.22
Psychiatric disorders <sup>d</sup>	2 (0.8)	4 (1.1)	0.73
Renal impairment	0 (0.0)	0 (0.0)	—
<b>Under chronic medication, n/N (%)</b>			0.37
Yes	118/239 (49.4)	187/352 (53.1)	
No	121/239 (50.6)	165/352 (46.9)	

HCWs, health care workers; n, number, N, number as a denominator.

<sup>a</sup> Patient's narratives collected with the telephonic interview were categorized by four independent physicians, who then agreed upon the findings. Post-COVID-19 syndrome was defined as symptoms that developed during or after COVID-19, continued for ≥12 weeks, not explained by an alternative diagnosis [10] (conjunctivitis, visual changes) in at least one of the following clinical presentations: dyspnoea, cough, fatigue (asthenia, myalgia), chest pain, anosmia/dysgeusia, headache, rheumatological involvement (back pain, arthralgia), neurological disorders (hypoesthesia, dizziness, hyposacusia), psychiatric/mood disorders (anxiety, sleep disorders, depression), inability to concentrate/brain fog, gastrointestinal disorders (diarrhoea, vomiting, nausea, epigastric pain, constipation and abdominal pain), skin lesions, hair loss, upper respiratory infection involvement (nose cold, sneezing, odynophagia) and ocular involvement.

<sup>b</sup> Cardiovascular disease: heart failure, ischaemic heart disease, tachyarrhythmias, valvular heart disease, venous thromboembolism.

<sup>c</sup> Pulmonary disease: asthma, chronic obstructive pulmonary disease.

<sup>d</sup> Depression, anxiety.

<sup>e</sup> Diagnostic and Statistical Manual of Mental Disorders, Fifth Edition (DSM-5) definition [36].

least one baseline co-morbidity, most often hypertension (135/599, 23%) and obesity (body mass index >30 = 98/599, 16.4%).

#### Acute COVID-19

Most patients were symptomatic (541/596, 90.8%) and presented mild (409/541, 75.6%) and moderate (93/541, 17.2%) disease. A total of 157/599 (26.2%) had been hospitalized (23/599; 3.8% in ICU) (Table 2), reporting a median in-hospital stay of 7 days (IQR 3–11).

Among those that were symptomatic, the median number of symptoms was three (IQR 1–4) and the most common clinical manifestations included fever (399/541, 73.7%), anosmia/dysgeusia (326/541, 60.3%), cough (259/541, 47.9%), fatigue (237/541, 43.8%) (Fig. 2). During the follow-up, we detected SARS-CoV-2 viral

shedding for a median of 19 (IQR 14–25) days after the symptom(s) onset (Table 2).

#### Post-COVID-19 syndrome

Patient evaluation was performed on day 191 (median, IQR 172–204) after acute COVID-19 onset. At this time, post-COVID-19 syndrome prevalence was 40.2% (241/599), (95% CI 0.36–0.44). Among them, 22.9% (137/599) reported at least one symptom, 10.8% (65/599) two symptoms and 6.5% (39/599) three or more symptoms. The most frequently reported persistent symptom was fatigue (78/599, 13.1%) (Table 3; Fig. 2). The persistence of fatigue, dyspnoea and neurological disorders was significantly associated with disease severity at onset (p < 0.05), whereas anosmia/

**Table 2**  
Post-COVID-19 syndrome according to the clinical presentation and the onset and the microbiological evolution ( $n = 599$ )

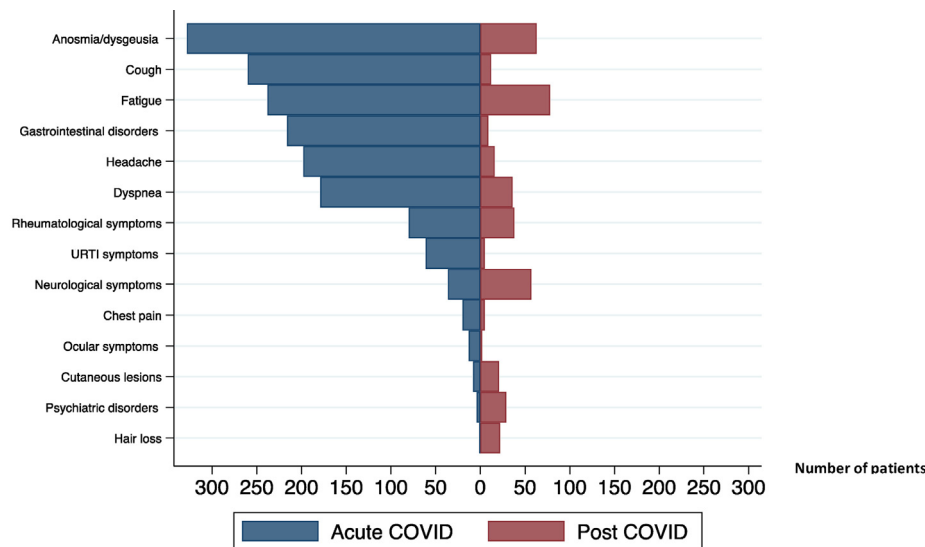
	Post-COVID-19 syndrome <sup>a</sup>		p
	Yes N = 241	No N = 358	
<b>Acute COVID-19 severity<sup>b</sup>, n/N (%)</b>			<0.001
Asymptomatic	3/239 (1.2)	52/357 (14.6)	
Mild	166/239 (69.5)	243/357 (68.1)	
Moderate	49/239 (20.5)	44/357 (12.3)	
Severe	10/239 (4.2)	14/357 (3.9)	
Critical	11/239 (4.6)	4/357 (1.1)	
<b>Symptoms at onset, number, n (%)</b>			<0.001
0	3 (1.2)	52 (14.5)	
1	22 (9.1)	104 (29.0)	
2	35 (14.5)	78 (21.8)	
3	49 (20.3)	51 (14.2)	
4	53 (22.0)	36 (10.1)	
≥5	79 (32.8)	37 (10.3)	
<b>Management, n (%)</b>			<0.001
Outpatients	157 (65.1)	285 (79.6)	
Inpatients			
Ward	70 (29.1)	64 (17.9)	
ICU	14 (5.8)	9 (2.5)	
<b>Length of in-hospital stay, days, median (IQR)</b>	7 (3–11)	7 (3–12)	0.48
<b>Viral shedding, days, median (IQR)</b>	20 (14–26)	19 (14–25)	0.21
<b>Ct-values, median (IQR)</b>	28.6 (24.7–33.5)	29.5 (23.8–33.2)	0.81

ct, cycle threshold; IQR, interquartile range; ICU, intensive care unit; n, number, N, number as a denominator.

§ asymptomatic; mild (without pneumonia); moderate (with pneumonia); severe (with severe pneumonia); critical including Acute Respiratory Distress Syndrome (ARDS), sepsis and/or septic shock [11].

<sup>a</sup> Patient's narratives collected with the telephonic interview were categorized by four independent physicians, who then agreed upon the findings. Post-COVID-19 syndrome was defined as symptoms that developed during or after COVID-19, continued for ≥12 weeks, not explained by an alternative diagnosis [10] (conjunctivitis, visual changes) in at least one of the following clinical presentations: dyspnoea, cough, fatigue (asthenia, myalgia), chest pain, anosmia/dysgeusia, headache, rheumatological involvement (back pain, arthralgia), neurological disorders (hypoesthesia, dizziness, hypoacusia), psychiatric/mood disorders (anxiety, sleep disorders, depression), inability to concentrate/brain fog, gastrointestinal disorders (diarrhoea, vomiting, nausea, epigastric pain, constipation and abdominal pain), skin lesions, hair loss, upper respiratory infection involvement (nose cold, sneezing, odynophagia) and ocular involvement.

<sup>^</sup> Infectious Disease or Pneumology Department.



**Fig. 2.** Acute- and post-COVID related symptoms. Abbreviations: COVID, coronavirus disease; URTI, upper respiratory tract infection.

dysgeusia occurred significantly more often among mild and acute COVID-19 patients ( $p < 0.001$ ) (Table 3).

Fifty patients were seronegative or seroconverted at serological follow-up before 6 months and 231 patients underwent a serological test at the time of the interview ( $\pm 15$  days); among 193/281 (68.7%), a persistence of anti-SARS-CoV-2 IgG emerged. The median SARS-CoV-2 IgG antibody titre was 33 kAU/L (IQR 15–65.8 kAU/L). At the time of the interview three out of 55 initially asymptomatic

patients reported symptoms (including fatigue, skin lesions and hair loss) and two of these same three maintained a stable serological response (Table 3).

#### Post-COVID-19 syndrome associated factors

Risk factors for post-COVID-19 syndrome were evaluated for the total population ( $n = 599$ ) and the sub-group with the serological

**Table 3**  
Symptoms of post-COVID-19 syndrome according to grade of severity of acute COVID-19 (*n* = 599)

	Total <i>N</i> = 596	Severity of disease at the onset <sup>§</sup>					<i>p</i>
		Asymptomatic <i>N</i> = 55	Mild <i>N</i> = 409	Moderate <i>N</i> = 93	Severe <i>N</i> = 24	Critical <i>N</i> = 15	
<b>Post-COVID symptoms, number, <i>n</i> (%)</b>							<0.001
0	357 (59.9)	52 (94.5)	243 (59.4)	44 (47.3)	14 (58.3)	4 (26.7)	
1	136 (22.8)	3 (5.4)	96 (23.5)	28 (30.1)	5 (20.8)	4 (26.7)	
2	64 (10.7)	0 (0.0)	46 (11.2)	12 (12.9)	3 (12.5)	3 (20.0)	
3	28 (4.7)	0 (0.0)	18 (4.4)	7 (7.5)	1 (4.2)	2 (13.3)	
4	7 (1.2)	0 (0.0)	4 (1.0)	2 (2.1)	0 (0.0)	1 (6.7)	
5	4 (0.7)	0 (0.0)	2 (0.5)	0 (0.0)	1 (4.2)	1 (6.7)	
Fatigue, <i>n</i> (%)	78 (13.1)	1 (1.8)	45 (11.0)	21 (22.6)	5 (20.8)	6 (40.0)	<0.001
Anosmia/dysgeusia, <i>n</i> (%)	62 (10.4)	0 (0.0)	57 (13.9)	4 (4.3)	1 (4.2)	0 (0.0)	<0.001
Neurological disorders, <i>n</i> (%)	57 (9.6)	0 (0.0)	32 (7.8)	17 (18.3)	3 (12.5)	5 (33.3)	<0.001
Rheumatological disorders <i>n/N</i> (%)	38/463 (8.2)	0 (0.0)	25/311 (8.0)	6/67 (9.0)	2/17 (11.8)	4/10 (0.8)	0.002
Dyspnoea, <i>n</i> (%)	36 (6.0)	0 (0.0)	22 (5.4)	10 (10.7)	1 (4.2)	3 (20.0)	0.011
Psychiatric disorders, <i>n</i> (%)	29 (4.9)	0 (0.0)	20 (4.9)	6 (6.4)	1 (4.2)	2 (13.3)	0.14
Hair loss, <i>n</i> (%)	22 (3.7)	1 (1.8)	16 (3.9)	2 (2.1)	2 (8.3)	1 (6.7)	0.39
Cutaneous lesions, <i>n</i> (%)	20 (3.4)	1 (1.8)	15 (3.7)	3 (3.2)	0 (0.0)	1 (6.7)	0.77
URTI symptoms, <i>n</i> (%)	20 (3.4)	0 (0.0)	3 (0.7)	1 (1.1)	0 (0.0)	1 (6.7)	0.23
Headache, <i>n</i> (%)	16 (2.7)	0 (0.0)	15 (3.4)	1 (1.1)	0 (0.0)	0 (0.0)	0.51
Cough, <i>n</i> (%)	12 (2.0)	0 (0.0)	7 (1.7)	3 (3.2)	1 (4.2)	1 (6.7)	0.18
Gastrointestinal disorders, <i>n</i> (%)	9 (1.5)	0 (0.0)	4 (1.0)	3 (3.2)	2 (8.3)	0 (0.0)	0.05
Chest pain, <i>n</i> (%)	5 (0.8)	0 (0.0)	3 (0.7)	1 (1.1)	1 (4.2)	0 (0.0)	0.36
Ocular symptoms, <i>n</i> (%)	2 (0.3)	0 (0.0)	2 (0.5)	0 (0.0)	0 (0.0)	0 (0.0)	1.00

COVID-19, coronavirus disease-19; *n*, number, *N*, number as a denominator; URTI, upper respiratory tract infection.

& The question was missed in some interviews.

<sup>§</sup> Asymptomatic; mild (without pneumonia); moderate (with pneumonia); severe (with severe pneumonia); critical including Acute Respiratory Distress Syndrome (ARDS), sepsis and/or septic shock [11].

follow-up available at the time of the interview (*n* = 231) (Table 4 and Tables S3–S5).

Presence of IgG antibodies against SARS-CoV-2 6 months after acute COVID-19 onset was significantly associated with the risk of post-COVID syndrome (*n* = 281, 88 seronegative patients vs. 193 seropositive patients, OR 2.56, 95% CI 1.48–4.38, *p* 0.001). Focusing on the subgroup of 231 patients, with regard to the titre magnitude among seropositive patients, median SARS-CoV-2 IgG antibody titres were significantly higher in long-haulers than in patients without sequelae (42.1, IQR 17.1–78.4 vs. 29.1, IQR 12.1–54.2 kAU/L) (Fig. 3).

In the multivariable logistic regression analysis, female gender (total population: OR 1.55, 95% CI 1.05–2.27, *p* 0.025; sub-group OR 2.82, 95% CI 1.46–5.43, *p* 0.002), a proportional increase in the number of symptoms (quantitative variable) at the onset of COVID-19 (total population: OR 1.81, 95% CI 1.59–2.05, *p* < 0.001; subgroup: OR 1.51, 95% CI 1.23–1.85, *p* < 0.001), ICU admission (total population: OR 3.10, 95% CI 1.18–8.11, *p* 0.021; subgroup: OR 8.29, 95% CI 1.43–48.00, *p* 0.018) and a proportional increase in anti-SARS-CoV-2 IgG at the time of the interview in the subgroup (OR 1.01, 95% CI 1.00–1.02, *p* 0.040) were all independent risk factors for the development of post-COVID-19 syndrome (Table 4 and Table S5).

## Discussion

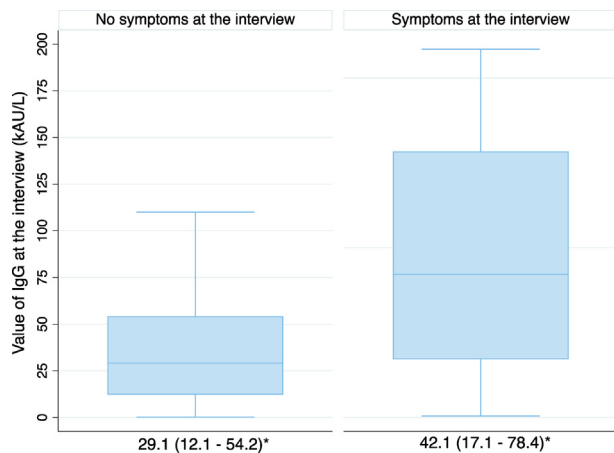
Possible long-term effects associated with coronavirus outbreaks documented to date have concerned severe acute respiratory syndrome (SARS) and Middle East respiratory syndrome (MERS) [5]. However, with regard to the recent COVID-19 outbreak, the available studies provided evidence on hospitalized patients [2,8,12,13], mainly with short follow-ups (<3 months) [1,12], leaving the long-term implications among community-dwelling individuals underinvestigated. Considering symptoms as perceived by patients and their associations with some serological parameters, this study has integrated the PROs framework [9] into routine clinical care, which might enhance symptom managements [6].

Findings suggest that the persistent high titres of the serological response against SARS-CoV-2 may play a significant role as an independent risk factor for post-COVID-19 symptoms alongside female gender, the number of symptoms at onset and ICU admission. Specifically, the overall incidence of post-COVID-19 syndrome was 40.3% with a high burden of symptoms (17.3% manifested ≥2 sequelae); although it is challenging to compare findings emerged in studies with different follow-ups (from 15 days to 7 months) [1,5,7,8,13,15] and populations, the overall

**Table 4**  
Multivariable analysis of risk factors associated with post-COVID-19 syndrome (*n* = 599)

Risk factors	OR	95% CI	<i>p</i>
<b>Gender</b>			
Female	0.025	1.05–2.27	
<b>Age group</b>			
41–60 vs. 18–40	1.00	0.61–1.62	0.99
>60 vs. 18–40	1.03	0.62–1.74	0.90
>60 vs. 41–60	1.04	0.67–1.60	0.87
<b>Symptoms of acute COVID-19 at the onset, number</b>	1.81	1.59–2.05	<0.001
<b>Management</b>			
Ward vs. outpatients	1.87	1.19–2.94	0.007
ICU vs. outpatients	3.10	1.18–8.11	0.021
ICU vs. ward	1.65	0.61–4.46	0.32

CI, confidence of interval; Ct, cycle threshold; ICU, intensive care unit; OR, odds ratio.



**Fig. 3.** Serological response against SARS-CoV-2 in patients with or without post-COVID-19 syndrome at 6 months. \*median (IQR).

incidence of post-COVID-19 syndrome was documented to range from 35% to 94% [1,2,7,14–16].

Findings suggest also that SARS-CoV-2 has several manifestations at 6 months regardless of the onset manifestation, from asymptomatic through to critical life-threatening disease. As previously reported [2,7], the presence of post-COVID-19 symptoms was significantly associated with the number of symptoms at onset and with the grade of disease requiring an ICU admission; however, as documented [14,15], our findings indicate that COVID-19 can also cause prolonged illness among individuals with milder disease and those requiring ambulatory care. In addition, we found significant differences regarding persistent symptoms with a higher incidence of anosmia/dysgeusia in patients with mild illness, and fatigue, dyspnoea, neurological disorders and rheumatological symptoms in patients with severe disease. Fatigue and dyspnoea have been reported among SARS and MERS patients, and are currently being described in COVID-19 survivors, mainly after hospitalization [3,7,17,18]. SARS-CoV-2 has high neuroinvasive potential compared with known coronaviruses, causing variable prolonged sequelae, including headache, chemosensory dysfunction and neuro-cognitive issues [14,19]. It is interesting that unlike in SARS and MERS, anosmia and dysgeusia are frequently reported at acute onset and persisted in about 10% of the patients in our cohort. Rheumatological symptoms have also been reported in COVID-19 patients both at onset and over time [7,20], with the most common symptom in our study being arthralgia. The multi-organ chronic COVID-19 disease suggests that a multidisciplinary approach is required when implementing the care pathway, as recommended in NICE guidelines [10].

The underlying mechanism of acute and long-term consequences of COVID-19 is likely to be multifactorial. COVID-19 infection has been found to have equal prevalence in men and women, but male gender has shown to be a risk factor for higher severity and mortality [21]. In our cohort, females reported a higher prevalence of post-COVID-19 symptoms than males, consistent with previous long-haulers studies [1,2]. Physiological and social factors have been reported as possible explanation [1,8,22]; however, further data are needed. In contrast with available studies [8,15,23], we did not find any association with age and pre-existing co-morbidities, suggesting that the long-term effects of COVID-19 can be debilitating, even among young and healthy individuals.

The reasons why some recovered patients report chronic-COVID-19 are unknown [14,24]. Changes in viral load and the ability to interfere with the human immune system may play a role. A positive outcome implies the eradication of infection by immune

response while providing immune protection from reinfection. On the other hand, a poor immune response with the persistence of viral triggers may promote a chronic phase of the disease [25]. However, knowledge regarding the dynamics and nature of the immune response to SARS-CoV-2 infection and its association with long COVID-19 is still limited. Huang and colleagues, including COVID-19 patients 6 months after hospital discharge, found a decline in seropositivity and in the median titres of the neutralizing antibodies when compared with the acute phase. Unfortunately, due to the limited serological data, the authors could not associate these findings with post-COVID syndrome [2]. In our study, a significant association between the presence and the persistence of acquired immune function and the association of increasing titres of SARS-CoV-2 antibodies and post-COVID syndrome emerged. Interestingly, multisystem inflammatory syndrome (MIS) has been reported to be a unique aspect of post-acute SARS-CoV-2 infection. In a large study describing this entity, approximately three-quarters of subjects presenting with MIS reported a serological response [26]. In our study, viral replication was rarely recovered 3 weeks after symptom onset [27] and the duration of viral shedding was not associated with a higher risk of post-COVID-19 symptoms. Despite this, it is well known that SARS-CoV-2 may persist in other difficult-to-eradicate tissues [6,28]. Our data and literature [5,6,25] suggest that SARS-CoV-2 could cause damage through the extent of cytopathic virus replication, creating an inflammatory environment, especially in immunologically privileged sites where it can be difficult for the immune system to eradicate. Hence, post-acute COVID may be driven mainly by allo-immune and auto-immune responses. Cytokine storm and the dysregulated immune response with the exaggerated inflammatory reaction associated with symptomatic COVID-19 [29], microangiopathy and endothelial injury and post-viral syndrome, as described for other viral infections, could promote a chronic disease [30]. A better understanding of the potential mechanism of post-COVID-19 is needed to establish effective treatments.

To the best of our knowledge, no data regarding asymptomatic patients over time are available. Three out of 55 asymptomatic patients complained symptoms at follow-up, and taking into consideration the limited size, two out of three maintained serological response at the follow-up.

This study has several limitations. It was performed in a single centre, introducing a potential selection bias; it has relied on patient self-reported symptoms [17], without any objective assessment introducing an information bias [32–34]. Only one serological test was performed, which may have an assay-dependent rate of sensitivity, specificity and antibody decline. However, we chose this antibody assay (iFlash-SARS-CoV-2) on the basis of a preliminary validation study and the literature [35]. The neutralizing antibodies test was not performed: its complexity prevents routine testing on a large scale while its utility in long-term immunity against SARS-CoV-2 remains undetermined.

In conclusion, a prospective follow-up of a large cohort of recovered COVID-19 patients with different grade severities and cared for in different settings suggested that 40.2% of them experienced post-COVID-19 syndrome up to 6 months after the onset. Several long-term pandemic clinical and health care service management issues should be considered. Moreover, the association of post-COVID-19 symptoms with the serological response triggers several insights into underlying pathogenesis mechanisms and possible therapeutic strategies.

#### Transparency declaration

Maddalena Peghin reports receiving grants and personal fees from Pfizer, MSD and Dia Sorin outside the submitted work. Carlo

Tascini has received grants in the last two years from Correvio, Biotest, Biomerieux, Gilead, Angelini, MSD, Pfizer, ThermoFisher, Zambon, Shionogi, Avir Pharma and Hikma outside the submitted work.

### Funding

This research was funded by PRIN 2017 n.20178S4EK9 – “Innovative statistical methods in biomedical research on biomarkers: from their identification to their use in clinical practice”.

### Authors contributions

Conceptualization: M. Peghin, A. Palese, M. Isola, C. Tascini; Methodology: M. Peghin, A. Palese, M. Isola, C. Tascini; Software: M. De Martino, M. Isola; Validation: M. De Martino, M. Isola; Formal Analysis: M. De Martino M. Isola; Investigation: M. Peghin, A. Palese, M. Isola, M. De Martino, C. Tascini; Resources: M. Fabris, F. Curcio; Data curation: M. Venturini, V. Gerussi, E. Graziano, G. Bontempo, F. Marrella; Writing – Original Draft: M. Peghin, A. Palese; Writing – Review & Editing: M. Peghin, A. Palese, M. Isola, M. De Martino, M. Fabris, F. Curcio, A. Tommasini; C. Tascini; Visualization: M. Peghin, M. Isola, M. De Martino; Supervision: M. Peghin, A. Palese, M. Isola, C. Tascini; Project Administration: M. Peghin, A. Palese, M. Isola, F. Curcio, C. Tascini; Funding acquisition: M. Isola.

### Acknowledgements

The authors are grateful to all patients for their collaboration. The authors would like to thank all clinical and nursing staff who cared for the patients at Udine Infectious Disease Clinic during hospitalization and ambulatory management. We also thank the *umarells* for their precious and strenuous support in the fight against COVID-19.

### Appendix A. Supplementary data

Supplementary data to this article can be found online at <https://doi.org/10.1016/j.cmi.2021.05.033>.

### References

- [1] Goertz YMJ, Van Herck M, Delbressine JM, Vaes AW, Meys R, Machado FVC, et al. Persistent symptoms 3 months after a SARS-CoV-2 infection: the post-COVID-19 syndrome? *ERJ Open Res* 2020;6:542–2020.
- [2] Huang C, Huang L, Wang Y, Li X, Ren L, Gu X, et al. 6-month consequences of COVID-19 in patients discharged from hospital: a cohort study. *Lancet* 2021;397:220–32.
- [3] Ahmed H, Patel K, Greenwood DC, Halpin S, Lewthwaite P, Salawu A, et al. Long-term clinical outcomes in survivors of severe acute respiratory syndrome and Middle East respiratory syndrome coronavirus outbreaks after hospitalisation or ICU admission: a systematic review and meta-analysis. *J Rehabil Med* 2020;52:jrm00063.
- [4] Honigsbaum M, Krishnan L. Taking pandemic sequelae seriously: from the Russian influenza to COVID-19 long-haulers. *Lancet* 2020;396:1389–91.
- [5] Peghin M, Los-Arcos I, Hirsch HH, Codina G, Monforte V, Bravo C, et al. Community-acquired respiratory viruses are a risk factor for chronic lung allograft dysfunction. *Clin Infect Dis* 2019;69:1192–7.
- [6] Amenta EM, Spallone A, Rodriguez-Barradas MC, El Sahly HM, Atmar RL, Kulkarni PA. Postacute COVID-19: an overview and approach to classification. *Open Forum Infect Dis* 2020;7:ofaa509.
- [7] Carfi A, Bernabei R, Landi F, Gemelli Against C-P-ACSG. Persistent symptoms in patients after acute COVID-19. *JAMA* 2020;324:603–5.
- [8] Jacobs LG, Gourna Paleoudis E, Lesky-Di Bari D, Nyirenda T, Friedman T, Gupta A, et al. Persistence of symptoms and quality of life at 35 days after hospitalization for COVID-19 infection. *PLoS One* 2020;15:e0243882.
- [9] Powers III JH, Howard K, Saretsky T, Clifford S, Hoffmann S, Llorens L, et al. Patient-reported outcome assessments as endpoints in studies in infectious diseases. *Clin Infect Dis* 2016;63(Suppl 2):S52–6.
- [10] NICE guideline [NG188]. COVID-19 rapid guideline: managing the long-term effects of COVID-19 2020. <https://www.nice.org.uk/guidance/ng188>. Published: 18 December 2020.
- [11] World Health Organization. Clinical management of COVID-19: interim guidance. 2021 (No. WHO/2019-nCoV/clinical/2021.1) 2021. Available at: <https://www.who.int/publications/i/item/WHO-2019-nCoV-clinical-2021-1>. [Accessed 29 January 2021].
- [12] World Health Organization. Laboratory testing for coronavirus disease (COVID-19) in suspected human cases interim guidance. 2020 (No. WHO/2019-nCoV/laboratory/2020.2) 2020. Available from: <https://www.who.int/publications-detail/laboratory-testing-for-2019-novel-coronavirus-in-suspected-human-cases-20200117>. [Accessed 29 January 2021].
- [13] Center for Health Security. Serology-based tests for COVID-19 2020. Available at: <https://www.centerforhealthsecurity.org/resources/COVID-19/serology/Serology-based-tests-for-COVID-19.html>. [Accessed 29 January 2021].
- [14] Del Rio C, Collins LF, Malani P. Long-term health consequences of COVID-19. *JAMA* 2020;324(17):1723–1724.
- [15] Carvalho-Schneider C, Laurent E, Lemaigen A, Beaufils E, Bourbao-Tournois C, Laribi S, et al. Follow-up of adults with noncritical COVID-19 two months after symptom onset. *Clin Microbiol Infect* 2021;27(2):258–263.
- [16] Davis HE, Assaf GS, McCorkell L, Wei H, Low RJ, Re'em Y, et al. Characterizing Long COVID in an international cohort: 7 months of symptoms and their impact. *medRxiv* 2020.12.24.20248802 2020.
- [17] Mandal S, Barnett J, Brill SE, Brown JS, Denny EK, Hare SS, et al. Long-COVID: a cross-sectional study of persisting symptoms, biomarker and imaging abnormalities following hospitalisation for COVID-19. *Thorax* 2020;thoraxjnl-2020-215818.
- [18] Halpin SJ, McIvor C, Whyatt G, Adams A, Harvey O, McLean L, et al. Post-discharge symptoms and rehabilitation needs in survivors of COVID-19 infection: a cross-sectional evaluation. *J Med Virol* 2021;93:1013–22.
- [19] Wijeratne T, Crewther S. Post-COVID 19 Neurological Syndrome (PCNS); a novel syndrome with challenges for the global neurology community. *J Neurol Sci* 2020;419:117179.
- [20] Ciaffi J, Meliconi R, Ruscitti P, Berardicurti O, Giacomelli R, Ursini F. Rheumatic manifestations of COVID-19: a systematic review and meta-analysis. *BMC Rheumatol* 2020;4:65.
- [21] Gebhard C, Regitz-Zagrosek V, Neuhauser HK, Morgan R, Klein SL. Impact of sex and gender on COVID-19 outcomes in Europe. *Biol Sex Differ* 2020;11:29.
- [22] Bardel A, Wallander MA, Wallman T, Rosengren A, Johansson S, Eriksson H, et al. Age and sex related self-reported symptoms in a general population across 30 years: patterns of reporting and secular trend. *PLoS One* 2019;14:e0211532.
- [23] Tenforde MW, Kim SS, Lindsell CJ, Billig Rose E, Shapiro NI, Files DC, et al. Symptom duration and risk factors for delayed return to usual health among outpatients with COVID-19 in a multistate health care systems Network – United States, March–June 2020. *MMWR Morb Mortal Wkly Rep* 2020;69:993–8.
- [24] Davido B, Seang S, Tubiana R, de Truchis P. Post-COVID-19 chronic symptoms: a postinfectious entity? *Clin Microbiol Infect* 2020;26:1448–9.
- [25] Rouse BT, Sehrawat S. Immunity and immunopathology to viruses: what decides the outcome? *Nat Rev Immunol* 2010;10:514–26.
- [26] Godfred-Cato S, Bryant B, Leung J, Oster ME, Conklin L, Abrams J, et al. COVID-19-associated multisystem inflammatory syndrome in children – United States, March–July 2020. *MMWR Morb Mortal Wkly Rep* 2020;69:1074–80.
- [27] Xiao AT, Tong YX, Zhang S. Profile of RT-PCR for SARS-CoV-2: a preliminary study from 56 COVID-19 patients. *Clin Infect Dis* 2020;71:2249–51.
- [28] Zhang Y, Geng X, Tan Y, Li Q, Xu C, Xu J, et al. New understanding of the damage of SARS-CoV-2 infection outside the respiratory system. *Biomed Pharmacother* 2020;127:110195.
- [29] Broderick G, Fuite J, Kreitz A, Vernon SD, Klimas N, Fletcher MA. A formal analysis of cytokine networks in chronic fatigue syndrome. *Brain Behav Immun* 2010;24:1209–17.
- [30] Ackermann M, Verleden SE, Kuehnel M, Haverich A, Welte T, Laenger F, et al. Pulmonary vascular endothelialitis, thrombosis, and angiogenesis in Covid-19. *N Engl J Med* 2020;383:120–8.
- [31] Needham DM, Davidson J, Cohen H, Hopkins RO, Weinert C, Wunsch H, et al. Improving long-term outcomes after discharge from intensive care unit: report from a stakeholders’ conference. *Crit Care Med* 2012;40:502–9.
- [32] Rossi R, Soggi V, Talevi D, Mensi S, Ntoliu C, Pacitti F, et al. COVID-19 pandemic and lockdown measures impact on mental health among the general population in Italy. *Front Psychiatr* 2020;11:790.
- [33] Aiyegbusi OL, Calvert MJ. Patient-reported outcomes: central to the management of COVID-19. *Lancet* 2020;396:531.
- [34] Plebani M, Padoan A, Negrini D, Carpinteri B, Sciacovelli L. Diagnostic performances and thresholds: the key to harmonization in serological SARS-CoV-2 assays? *Clin Chim Acta* 2020;509:1–7.
- [35] American Psychiatric Association. DSM-5 diagnostic classification, vol. 10. Washington, DC: APA; 2013.