

# Trends of Mortality and Cause of Death among HIV-Infected Patients in Korea, 1990-2011

Sun Hee Lee,<sup>1</sup> Kye-Hyung Kim,<sup>1</sup>  
Seung Geun Lee,<sup>1</sup> Dong Hwan Chen,<sup>2</sup>  
Dong Sik Jung,<sup>3</sup> Chi Sook Moon,<sup>4</sup>  
Ji Young Park,<sup>5</sup> Joo Seop Chung,<sup>1</sup>  
Ihm Soo Kwak,<sup>1</sup> and Goon Jae Cho,<sup>1</sup>

<sup>1</sup>Department of Internal Medicine, Pusan National University Hospital, Pusan National University School of Medicine, Busan; <sup>2</sup>Namgu Public Health Center, Busan; <sup>3</sup>Department of Internal Medicine, Dong-A University College of Medicine, Busan; <sup>4</sup>Department of Internal Medicine, Busan Paik Hospital, Inje University College of Medicine, Busan; <sup>5</sup>Department of Internal Medicine, Kosin University College of Medicine, Busan, Korea

Received: 27 July 2012  
Accepted: 15 November 2012

Address for Correspondence:

Sun Hee Lee, MD

Division of Infectious Diseases, Department of Internal Medicine, Pusan National University Hospital, 179 Gudeok-ro, Seo-gu, Busan 602-739, Korea  
Tel: +82.51-240-7673, Fax: +82.51-247-3213  
E-mail: mdssampak@yahoo.co.kr

This work was supported by the Financial Supporting Project of Long-term Overseas Dispatch of Pusan National University Tenure-track Faculty, 2009.

Although a decrease in acquired immunodeficiency syndrome (AIDS)-related mortality has been documented in highly active antiretroviral therapy (HAART) era, there are no published data comparing specific causes of death between pre-HAART and HAART era in Korea. Mortality and cause of death were analyzed in three treatment periods; pre-HAART (1990-1997), early-HAART (1998-2001), and late-HAART period (2002-2011). The patients were retrospectively classified according to the treatment period in which they were recruited. Although mortality rate per 100 person-year declined from 8.7 in pre-HAART to 4.9 in late-HAART period, the proportion of deaths within 3 months of initial visit to study hospital significantly increased from 15.9% in pre-HAART to 55.1% in late-HAART period ( $P < 0.001$ ). Overall, 59% of deaths were attributable to AIDS-related conditions, and *Pneumocystis pneumonia* (PCP) was the most common cause of death (20.3%). The proportion of PCP as cause of death significantly increased from 8.7% in pre-HAART to 31.8% in late-HAART period ( $P < 0.001$ ). Despite of significant improvement of survival, there was still a high risk of early death in patients presenting in HAART era, mainly due to late human immunodeficiency virus (HIV) diagnosis and late presentation to care.

**Key Words:** HIV; Antiretroviral Therapy; Mortality; Cause of Death

## INTRODUCTION

The introduction of highly active antiretroviral therapy (HAART) has led to dramatic improvement in survival for persons living with human immunodeficiency virus (HIV), turning a fatal disease into a manageable chronic condition (1-3). In HIV infected patients without other risk factors on a successful HAART, the probability of survival is approaching closer to that in the general population of a similar age (4-9). Along with increased survival, the causes of death among HIV-infected patients also have gradually changed. As a result of the dramatic reduction in mortality due to acquired immunodeficiency syndrome (AIDS) defining illness, the proportion of non-AIDS-related death has increased in HAART era (10-12).

In Korea, a total of 7,656 individuals were diagnosed with HIV infection between 1985 and 2010, and 1,364 (17.7%) of whom died (13). Since the first introduction of zidovudine in 1991, antiretroviral agents were sequentially introduced in Korea; other nucleotide reverse transcriptase inhibitors (didanosine in 1994,

lamivudine in 1997, stavudine in 1999, and abacavir in 2002), followed by protease inhibitors (indinavir in 1997, nelfinavir in 1998, lopinavir/ritonavir in 2001, atazanavir in 2005 and darunavir in 2010), non-nucleotide reverse transcriptase inhibitors (efavirenz in 1999, and nevirapine in 2000), and an integrase inhibitor (raltegravir in 2010). The survival following HIV diagnosis continue to be improved over time in HAART period in Korea (14). However, proportion of deaths within 6 months of HIV diagnosis increased from 13.3% in pre-HAART era (1985-1996) to 59.2% in HAART era (1997-2007), suggesting that late presentation was an important risk factor for early death among HIV-infected individuals in Korea (14). Moreover, another recent study showed that 41% of newly diagnosed HIV infected individuals in Korea presented with advanced HIV disease, and proportion of late presentation increased after abolition of a government policy of mass mandatory screening, from 31.3% in 1987-1998 to 43% in 1999-2008 (15). Although an increase in survival has been documented, there are no published data comparing specific causes of death between pre-HAART era and HAART era

in Korea. The objective of this study was to assess the trends in mortality rate and cause of death over time among HIV infected patients in Korea between pre-HAART era and HAART era.

## MATERIALS AND METHODS

### Study population and design

A retrospective hospital-based cohort study was conducted to assess mortality and causes of death among HIV-infected patients. Pusan National University Hospital is a 1,220 bed, university-affiliated teaching hospital and provides HIV care for HIV infected patients in southeastern area of Korea, in close collaboration with local Public Health Centers (PHCs) in this area. The study included patients aged 18 yr and older who attended the study hospital for the first time for HIV care between 1990 and 2011. Patients who had received medical care for HIV and/or had taken antiretroviral therapy in other hospitals before they referred to the study hospital were excluded. The survival of patients who did not receive regular follow-up at study hospital was verified by local PHCs in their local district.

Three study periods were defined; pre-HAART period (1990-1997), early-HAART period (1998-2001), and late-HAART period (2002-2011). The patients were retrospectively classified according to the treatment period in which they were recruited, and their characteristics were analyzed separately. The initiation of HAART and prophylaxis for opportunistic infections (OIs) were based on international guidelines (16-18).

### Definitions

Cause of death was defined as the main conditions that initiated the sequence of events resulting in death. Cause of death was determined by the infectious disease specialist who had taken care of the patient if the patient died in the study hospital. If the patient died in other hospitals, the first author determined the cause of death by reviewing the medical records. If the hospital records were unavailable or the patient did not die in a hospital, the cause of death was determined from death certificates. Cause of death was categorized as an AIDS-death if the stated cause was an AIDS-defining OI or malignancy. AIDS-defining illness and clinical categories were defined by the 1993 Centers for Disease Control and Prevention (CDC) classification criteria (19). Cause of death was classified as a non-AIDS death for patients who died of other conditions, which was further categorized into bacterial infection/sepsis, non-AIDS-related malignancy, cardiovascular disease, liver disease, pulmonary disease, gastrointestinal disease, renal disease, hematological disease, and accidental cause, including accident, injury and suicide. We considered the cause of death to be indeterminate if the stated cause of death was nonspecific, such as cardiopulmonary arrest, AIDS or HIV infection without further specification, pneumonia of unknown etiology, and encephalitis of unknown origin. Death

was classified as unknown cause if there were no available death certificates or no data in local PHCs. Tuberculosis was classified as definite, probable, or possible: definite if culture for *Mycobacterium tuberculosis* was positive; probable if clinical symptoms and signs consistent with tuberculosis were present and stain was positive for acid-fast bacilli or if there were histological findings consistent with tuberculosis; possible if clinical and radiological signs consistent with tuberculosis were present and there was improvement with standard antituberculous therapy (20). Other opportunistic diseases including *Pneumocystis pneumonia* (PCP) were diagnosed according to the criteria suggested by the CDC (19). Hepatitis B virus (HBV) infection was defined as positive HBV surface antigen in the serum. Hepatitis C virus (HCV) infection was defined as the presence of HCV antibody with positive RNA in serum.

### Statistical analysis

Categorical variables were compared using Pearson's chi-square test or Fisher's exact test, whereas non-categorical variables were tested with the Mann-Whitney U-test or the Kruskal-Wallis test. The mortality rate for each group was calculated as the number of deaths per 100 person-years (PY) of observation. Survival duration was calculated from the date of first visit to the study hospital for HIV care to the date of death, or December 31st 2011. The relationship between the treatment period in which they were recruited and survival rate was assessed using the Kaplan-Meier method compared by log-rank test and generalized Wilcoxon test stratified by the treatment period in which they were recruited. All tests were considered statistically significant at  $P < 0.05$ . The statistical analyses were conducted using PASW Statistics 18 (SPSS Inc., Chicago, IL, USA) and STATA 11.1 (StataCorp LP, College Station, TX, USA).

### Ethics statement

The study protocol was approved by institutional review board of Pusan National University Hospital (IRB No. E-2012073), which waived informed consent.

## RESULTS

### Subjects

Between 1990 and 2011, a total of 841 patients attended the study hospital. Of these, 94 patients who had received medical care for HIV and/or had taken antiretroviral therapy in other hospitals before visiting study hospital were excluded, leaving 747 patients for analyses. These 747 patients were grouped according to the treatment period in which they were recruited; 103 in pre-HAART period, 105 in early-HAART period, and 539 in late-HAART period. The baseline characteristics of the 747 patients are shown in Table 1.

**Table 1.** Baseline characteristics of 747 HIV-infected patients

Characteristics	No. (%) of patients				P value*
	Pre-HAART period	Early-HAART period	Late-HAART period	Total	
Number of patients	103 (13.8)	105 (14.1)	539 (72.2)	747 (100.0)	
Sex (male)	94 (91.3)	89 (84.8)	473 (87.8)	656 (87.8)	0.357
Age at presentation, median (IRQ) (yr)	37 (31-44)	40 (33.5-46)	44 (36-52)	42 (35-50)	< 0.001
Risk factor for HIV infection					< 0.001
Heterosexual	85 (82.5)	76 (72.4)	298 (55.3)	459 (61.4)	
Homo/Bisexual	13 (12.6)	23 (21.9)	222 (41.2)	258 (34.5)	
IDU/transfusion	3 (2.9)	4 (3.8)	8 (1.5)	15 (2.0)	
Unknown	2 (1.9)	2 (1.9)	11 (2.0)	15 (2.0)	
Median duration from HIV diagnosis to presentation (IRQ) (yr)	1.67 (0.33-3.25)	1.09 (0.14-4.9)	0.07 (0-0.93)	0.18 (0.01-1.9)	< 0.001
Median CD4 cell count at presentation (IRQ) (cells/ $\mu$ L)	307 (152-406)	279 (82-383)	177 (42-336)	210 (49-362)	< 0.001
> 350	40 (38.8)	33 (31.4)	114 (21.2)	187 (25.0)	
200-350	28 (27.2)	29 (27.6)	128 (23.8)	185 (24.8)	
< 200	32 (31.1)	40 (38.1)	274 (50.9)	346 (46.3)	
CDC clinical categories at presentation					< 0.001
A	69 (67.0)	72 (68.6)	261 (48.4)	402 (53.8)	
B	10 (9.7)	10 (9.5)	100 (18.6)	120 (16.1)	
C	24 (23.3)	23 (21.9)	178 (33.0)	225 (30.1)	
Initial HAART regimens					< 0.001
IDV, NFV, NVP	35 (34.0)	90 (85.7)	45 (8.4)	170 (22.8)	
LPV/r, ATV/r, DRV/r, EFV, RAL	8 (7.8)	4 (3.8)	355 (65.9)	367 (49.1)	
HBV seropositive	10/73 (13.7)	5/61 (8.2)	46/500 (9.2)	61/634 (9.6)	0.440
HCV seropositive	0/43 (0.0)	5/56 (8.9)	31/477 (6.5)	36/576 (6.3)	0.144

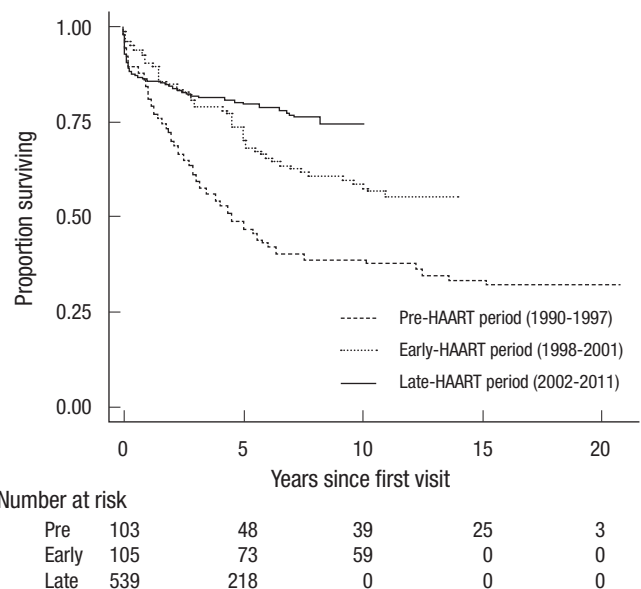
Data are number (%) of patients, unless otherwise indicated. Pre-HAART period, 1990-1997; Early-HAART period, 1998-2001; Late-HAART period, 2002-2011. \*Calculated using  $\chi^2$  test, Fisher's exact test, or the Kruskal-Wallis test. HIV, human immunodeficiency virus; IRQ, interquartile range; HAART, highly active anti-retroviral therapy; IDU, injection drug user; IDV, indinavir; NFV, nelfinavir; NVP, nevirapine; LPV/r, lopinavir/ritonavir; ATV/r, atazanavir/ritonavir; DRV/r, darunavir/ritonavir; EFV, efavirenz; RAL, raltegravir; HBV, hepatitis B virus; HCV, hepatitis C virus.

## Mortality

Of the 747 patients, a total of 222 patients (29.7%) died during the study period; 67% (69/103), 43.8% (46/105) and 19.9% (107/539) of the individuals presented in pre-HAART, early-HAART, and late-HAART period, respectively. Of the 222 patients who died, 154 (69.4%) died in hospital (120 in the study hospital and 34 in other hospitals) and 52 (23.4%) at home. Mortality rates per 100 person-year (PY) declined from 8.7 (95% CI, 6.86-10.99) in pre-HAART period to 5.4 (95% CI, 4.07-7.25) in early-HAART period, which further declined to 4.9 (95% CI, 4.05-5.91) in late-HAART period (generalized Wilcoxon test: chi-square test value of 28.8 on 2 degree of freedom, unadjusted  $P < 0.001$ ). There was a higher risk of death at early time points in patients presenting in late-HAART period compared with those who presented in both pre-HAART and early-HAART period (Fig. 1). Changes in demographic characteristics of those dying over three periods were broadly in line with changes in the baseline subjects (Table 2). In addition, the proportion of deaths within 3 months of presentation significantly increased over the three periods from 15.9% in pre-HAART period to 55.1% in late-HAART period ( $P < 0.001$ ).

## Causes of death

Of the 222 patients who died during study period, 59% was attributable to AIDS-related conditions and 29.3% to non-AIDS related conditions (Table 3). Although the proportion of non-



**Fig. 1.** Kaplan-Meier survival plot for HIV-infected patients stratified by the treatment period in which they were recruited. Pre-HAART period (1990-1997), early-HAART period (1998-2001), and late-HAART period (2002-2011) (Generalized Wilcoxon test,  $\chi^2$  test value of 28.8 on 2 degree of freedom, unadjusted  $P < 0.001$  for comparisons among each period).

AIDS-related deaths increased from 23.2% in patients presented in pre-HAART period to 41.3% in patients presented in early-HAART period, a trend toward a further rise in non-AIDS-related death rate did not occur over time in late-HAART period (28%)

**Table 2.** Demographic and clinical characteristics of 222 HIV-infected patients who died in 1990-2011

Characteristics	No. (%) of patients				P value*
	Pre-HAART period	Early-HAART period	Late-HAART period	Total	
Number of patients who died	69	46	107	222	
Sex (male)	66 (95.7)	41 (89.1)	97 (90.7)	204 (91.9)	0.342
Age at presentation, median (IRQ) (yr)	38 (32.5-47)	41 (34-47)	47 (41-55)	43.5 (35.8-51)	< 0.001
Risk factor for HIV infection					0.001
Heterosexual	58 (84.1)	31 (67.4)	64 (59.8)	153 (68.9)	
Homo/Bisexual	8 (11.6)	9 (19.6)	36 (33.7)	53 (23.9)	
IDU/transfusion	2 (2.9)	4 (8.7)	1 (0.9)	7 (3.2)	
Unknown	1 (1.4)	2 (4.4)	6 (5.6)	9 (4.1)	
Median duration from HIV diagnosis to presentation (IRQ) (yr)	2.01 (0.49-3.48)	1.68 (1.12-7.54)	0.04 (0-1.53)	0.46 (0.01-3.4)	< 0.001
Median CD4 cell count at presentation (IRQ) (cells/ $\mu$ L)	264 (78-379)	204 (36.5-345.5)	36 (19-175)	105 (21-309)	< 0.001
> 350	21/67 (31.3)	11/46 (23.9)	3/100 (3.0)	35/213 (16.4)	
200-350	18/67 (26.9)	12/46 (26.1)	23/100 (23.0)	53/213 (24.9)	
< 200	28/67 (41.8)	23/46 (50.0)	74/100 (74.0)	125/213 (58.7)	
CDC clinical categories at presentation					< 0.001
A	37 (53.6)	28 (60.9)	18 (16.8)	83 (37.4)	
B	10 (14.5)	4 (8.7)	15 (14.0)	29 (13.1)	
C	22 (31.9)	14 (30.4)	74 (69.2)	110 (49.5)	
Duration from presentation to death (IRQ) (yr)	2.47 (1.04-4.74)	4.19 (1.37-5.70)	0.17 (0.05-1.85)	1.27 (0.11-4.15)	< 0.001
Died after presentation					< 0.001
< 3 months	11 (15.9)	5 (10.9)	59 (55.1)	75 (33.8)	
3-6 months	5 (7.2)	5 (10.9)	16 (15.0)	26 (11.7)	
> 6 months	53 (76.8)	36 (78.3)	32 (29.1)	121 (54.5)	
Median CD4 cell count at death (IRQ) (cells/ $\mu$ L)	46.5 (8.8-136.5)	46 (11-128)	33 (13.3-126.5)	37 (11-127.5)	0.728
Initial HAART regimens					< 0.001
IDV, NFV, NVP	14 (20.3)	38 (82.6)	13 (12.2)	65 (29.3)	
LPV/r, ATV/r, DRV/r, EFV, RAL	2 (2.9)	2 (4.4)	43 (40.2)	47 (21.2)	
HBV seropositive	9/46 (19.6)	5/23 (21.7)	16/101 (15.8)	30/170 (17.6)	0.738
HCV seropositive	0/18 (0)	5/18(27.0)	13/94 (13.8)	18/130 (13.8)	0.053

Data are number (%) of patients, unless otherwise indicated. Pre-HAART period, 1990-1997; Early-HAART period, 1998-2001; Late-HAART period, 2002-2011. \*Calculated using  $\chi^2$  test, Fisher's exact test, or the Kruskal-Wallis test. HIV, human immunodeficiency virus; IRQ, interquartile range; HAART, highly active anti-retroviral therapy; IDU, injection drug user; IDV, indinavir; NFV, nelfinavir; NVP, nevirapine; LPV/r, lopinavir/ritonavir; ATV/r, atazanavir/ritonavir; DRV/r, darunavir/ritonavir; EFV, efavirenz; RAL, raltegravir; HBV, hepatitis B virus; HCV, hepatitis C virus.

( $P = 0.117$ ). Overall, PCP was the most common cause of AIDS-related death (20.3% of all deaths), and invasive bacterial infection (6.8% of all deaths) was the most frequent non-AIDS related conditions as cause of death. The proportion of patients who died as a result of PCP increased over time from 8.7% in pre-HAART period to 10.9% in early-HAART period, further a profound rise to 31.8% in late-HAART period ( $P < 0.001$ ). In contrast, the proportion of deaths due to tuberculosis gradually decreased over time from 20.3% in pre-HAART period to 17.4% in early-HAART period, further dropped to 13.1% in late-HAART period ( $P = 0.410$ ).

## DISCUSSION

In this study, we had a longitudinal follow-up over 20 yr to monitor the changes in survival and cause of death among the HIV-infected patients in Korea. In order to make more accurate estimates of actual survival, we traced all the patients lost to follow-up after initial linkage to HIV care to determine definitive outcomes of these lost patients because mortality rates may be underestimated if patients are not actively traced (21). This study

showed that the survival of patients presenting to the hospital for HIV care in HAART era significantly improved compared with those who presented in pre-HAART era. These findings are generally consistent with findings of other studies conducted in developed countries (1-3), and in Korea (14). In our study, even during HAART period, survival of the patients presenting in late-HAART period improved than that of the patients presenting in early-HAART period. However, as shown in Fig. 1, in spite of survival improvement in HAART era, the early mortality was still substantial in late-HAART period. This is presumably due to high proportion of patients presenting late into care. More than 50% of patients presenting in late-HAART period, furthermore, more than 70% of patients who died among them had a CD4 cell counts  $\leq 200$  cells/ $\mu$ L at first presentation for HIV care. The duration from HIV diagnosis to presentation for care decreased significantly over time, whereas the proportion of patients presenting with advanced HIV disease increased over time, indicating that the actual diagnosis of HIV infection occurs almost as late as their initial presentation for care in late-HAART period. These findings are also consistent with the findings of the previous study conducted in Korea, in which 59.2% of all deaths oc-

**Table 3.** Comparison of frequencies of specific cause of death in 222 HIV-infected patients who died in 1990-2011

Causes of death	Pre-HAART period	Early-HAART period	Late-HAART period	Total	P value*
AIDS-death	42 (60.9)	19 (41.3)	70 (65.4)	131 (59.0)	0.014
<i>Pneumocystis jirovecii</i> pneumonia	6 (8.7)	5 (10.9)	34 (31.8)	45 (20.3)	< 0.001
Definite	0 (0.0)	0 (0.0)	14 (13.1)	14 (6.3)	
Probable	6 (8.7)	5 (10.9)	20 (18.7)	31 (14.0)	
Tuberculosis	14 (20.3)	8 (17.4)	14 (13.1)	36 (16.2)	0.410
Definite	5 (7.2)	2 (4.4)	11 (10.3)	18 (8.1)	
Probable	3 (4.3)	1 (2.2)	0 (0.0)	4 (1.8)	
Possible	6 (8.7)	5 (10.9)	3 (2.8)	14 (6.3)	
HIV wasting syndrome	10 (14.5)	2 (4.4)	1 (0.9)	13 (5.9)	0.001
Non-Hodgkin's lymphoma	3 (4.3)	1 (2.2)	4 (3.7)	8 (3.6)	0.397
<i>Toxoplasma</i> encephalitis	2 (2.9)	0 (0.0)	4 (3.7)	6 (2.7)	0.487
Cryptococcosis	2 (2.9)	1 (2.2)	3 (2.8)	6 (2.7)	1.000
Cytomegalovirus disease	3 (4.3)	0 (0.0)	2 (1.7)	5 (2.3)	0.425
Non-tuberculous mycobacterial infections	0 (0.0)	0 (0.0)	3 (2.8)	3 (1.4)	0.310
Progressive multifocal leukoencephalitis	0 (0.0)	1 (2.2)	2 (1.7)	3 (1.4)	0.594
Kaposi sarcoma	1 (1.4)	0 (0.0)	2 (1.7)	3 (1.4)	1.000
HIV encephalopathy	1 (1.4)	1 (2.2)	1 (0.9)	3 (1.4)	0.784
Non-AIDS death	16 (23.2)	19 (41.3)	30 (28.0)	65 (29.3)	0.117
Bacterial infection/sepsis	3 (4.3)	5 (10.9)	7 (6.5)	15 (6.8)	0.470
Cardiovascular diseases	4 (5.8)	4 (8.7)	4 (3.7)	12 (5.4)	0.395
Non-AIDS malignancy	4 (5.8)	2 (4.4)	5 (4.7)	11 (5.0)	0.922
Liver disease including HCC	1 (1.4)	3 (6.5)	5 (4.7)	9 (4.1)	0.397
Suicide	0 (0.0)	3 (6.5)	4 (3.7)	7 (3.2)	0.091
Gastrointestinal diseases	1 (1.4)	1 (2.2)	4 (3.7)	6 (2.7)	0.863
Accidents (trauma, injury)	3 (4.3)	1 (2.2)	1 (0.9)	5 (2.3)	0.297
Indeterminate	4 (5.8)	5 (10.9)	3 (2.8)	12 (5.4)	0.115
Unspecified pneumonia	3 (4.3)	4 (8.7)	1 (0.9)	8 (3.6)	0.041
Unspecified AIDS	0 (0.0)	1 (2.2)	1 (0.9)	2 (0.9)	0.209
Unspecified CNS mass	1 (1.4)	0 (0.0)	0 (0.0)	1 (0.5)	0.516
Unspecified meningoencephalitis	0 (0.0)	0 (0.0)	1 (0.9)	1 (0.5)	1.000
Unknown	7 (10.1)	3 (6.5)	4 (3.7)	14 (6.3)	0.343
Total death	69	46	107	222	

Data are number (%) of patients, unless otherwise indicated. Pre-HAART period, 1990-1997; Early-HAART period, 1998-2001; Late-HAART period, 2002-2011. \*Calculated using  $\chi^2$  test, Fisher's exact test, or the Kruskal-Wallis test. HIV, human immunodeficiency virus; AIDS, acquired immunodeficiency syndrome; IRQ, interquartile range; HAART, highly active anti-retroviral therapy; IDU, injection drug user; HCC, hepatocellular carcinoma; CNS, central nervous system.

occurred within 6 months of HIV diagnosis in HAART period (1997-2007) (14).

The pattern of the cause of death was broadly in line with these findings. We could not observe the shift of cause of death toward non-AIDS-related death in HAART era, which had been demonstrated in other studies conducted in Western countries (1, 10-12, 22-26). The proportions of AIDS-related death remained higher than non-AIDS-related death in all three periods. Although the proportion of non-AIDS-related death in HAART period increased compared to pre-HAART period, there were no significant changes across the three study periods, rather it decreased in the late-HAART period compared to the early HAART period. For each cause of death in non-AIDS-related death, there were no significant changes in frequency across the three periods, including those that require a longer time to lead to death, such as cardiovascular disease, non-AIDS malignancy, liver disease.

In our study, PCP and tuberculosis were the most common causes of death. However, there was a trend toward increasing number of PCP and decreasing frequency of tuberculosis as cause of death over time. These findings seem to be the result of the increase of the proportion of late presenter to care in late-

HAART period. After widespread use of prophylaxis and HAART, the majority of cases of PCP occur among patients who are unaware of their HIV infection or are not receiving ongoing HIV care (27-30). In this study, 82.4% of deaths due to PCP among patients enrolled in late-HAART period occurred at the time of their first presentation for HIV care. Their baseline median CD4 cell count at the initial presentation was as low as 21 cells/ $\mu$ L, and only 32.4% of them received HAART.

This study has several limitations. First, our study was conducted at a single center in the southeastern area of Korea, and therefore our findings may not be generalized to other regions of the country. Second, because our study was based on the population presented to the hospital for HIV care, AIDS-related death might be overestimated. Third, this study allowed us to monitor long-term trends of mortality and cause of death, however, we were not able to perform a more detailed analysis of the causal role of the specific risk factors related to death, such as underlying conditions, lost to follow-up rate, the effectiveness of prophylaxis and HAART, or the effect of the immune-constitutional inflammatory syndrome.

In summary, we observed a significant improvement of sur-

vival of the HIV-infected patients in HAART era. Despite of this improvement, there is still a high risk of death at early time points in patients presenting in late-HAART period, mainly due to late HIV diagnosis and late presentation to care. The spectrum and changing patterns of the cause of death is also largely reflective of these results. Since AIDS-related death still remains the leading cause of death, further research is needed to identify the specific risk factors related to death in HAART era.

## ACKNOWLEDGMENTS

The authors have no conflicts of interest to disclose.

## REFERENCES

- Mocroft A, Ledergerber B, Katlama C, Kirk O, Reiss P, d'Arminio Monforte A, Knysz B, Dietrich M, Phillips AN, Lundgren JD. *Decline in the AIDS and death rates in the EUROSIDA study: an observational study. Lancet* 2003; 362: 22-9.
- Mocroft A, Vella S, Benfield TL, Chiesi A, Miller V, Gargalianos P, d'Arminio Monforte A, Yust I, Bruun JN, Phillips AN, et al. *Changing patterns of mortality across Europe in patients infected with HIV-1. EUROSIDA study group. Lancet* 1998; 352: 1725-30.
- Palella FJ Jr, Delaney KM, Moorman AC, Loveless MO, Fuhrer J, Satten GA, Aschman DJ, Holmberg SD. *Declining morbidity and mortality among patients with advanced human immunodeficiency virus infection. HIV Outpatient Study Investigators. N Engl J Med* 1998; 338: 853-60.
- Aldaz P, Moreno-Iribas C, Egues N, Irisarri F, Floristan Y, Sola-Boneta J, Martinez-Artola V, Sagredo M, Castilla J. *Mortality by causes in HIV-infected adults: comparison with the general population. BMC Public Health* 2011; 11: 300.
- Jaggy C, von Overbeck J, Ledergerber B, Schwarz C, Egger M, Rickenbach M, Furrer HJ, Telenti A, Battegay M, Flepp M, et al. *Mortality in the Swiss HIV Cohort Study (SHCS) and the Swiss general population. Lancet* 2003; 362: 877-8.
- Keiser O, Taffe P, Zwahlen M, Battegay M, Bernasconi E, Weber R, Rickenbach M. *All cause mortality in the Swiss HIV Cohort Study from 1990 to 2001 in comparison with the Swiss population. AIDS* 2004; 18: 1835-43.
- Lewden C, Chene G, Morlat P, Raffi F, Dupon M, Dellamonica P, Pellegrin JL, Katlama C, Dabis F, Lepout C. *HIV-infected adults with a CD4 cell count greater than 500 cells/mm<sup>3</sup> on long-term combination antiretroviral therapy reach same mortality rates as the general population. J Acquir Immune Defic Syndr* 2007; 46: 72-7.
- Lohse N, Hansen AB, Pedersen G, Kronborg G, Gerstoft J, Sorensen HT, Vaeth M, Obel N. *Survival of persons with and without HIV infection in Denmark, 1995-2005. Ann Intern Med* 2007; 146: 87-95.
- Obel N, Omland LH, Kronborg G, Larsen CS, Pedersen C, Pedersen G, Sorensen HT, Gerstoft J. *Impact of non-HIV and HIV risk factors on survival in HIV-infected patients on haart: A population-based nationwide cohort study. PLoS One* 2011; 6: e22698.
- Marin B, Thiebaut R, Bucher HC, Rondeau V, Costagliola D, Donrucci M, Hamouda O, Prins M, Walker S, Porter K, et al. *Non-AIDS-defining deaths and immunodeficiency in the era of combination antiretroviral therapy. AIDS* 2009; 23: 1743-53.
- Sackoff JE, Hanna DB, Pfeiffer MR, Torian LV. *Causes of death among persons with AIDS in the era of highly active antiretroviral therapy: New York city. Ann Intern Med* 2006; 145: 397-406.
- Smith C, Sabin CA, Lundgren JD, Thiebaut R, Weber R, Law M, Monforte A, Kirk O, Friis-Moller N, Phillips A, et al. *Factors associated with specific causes of death amongst HIV-positive individuals in the D:A:D study. AIDS* 2010; 24: 1537-48.
- Korea Centers for Disease Control and Prevention. *KCDC Public Health Weekly Report. Available at: http://www.cdc.go.kr/phwr [accessed on 1 June 2012].*
- Kee MK, Lee JH, Kim EJ, Lee J, Nam JG, Yoo BH, Kim SS. *Improvement in survival among HIV-infected individuals in the Republic of Korea: need for an early HIV diagnosis. BMC Infect Dis* 2009; 9: 128.
- Choe PG, Park WB, Song JS, Kim NH, Park JY, Song KH, Park SW, Kim HB, Kim NJ, Oh MD. *Late presentation of HIV disease and its associated factors among newly diagnosed patients before and after abolition of a government policy of mass mandatory screening. J Infect* 2011; 63: 60-5.
- Department of Health and Human Services. *Archived Adult and Adolescent Guidelines. http://www.aidsinfo.hih.gov/guidelines/archive/adult-and-adolescent-guidelines/ [accessed on 1 June 2012].*
- International AIDS Society - USA. *Guidelines archive. Available at: http://www.iasusa.org/guidelines-archive [accessed on 1 June 2012].*
- Department of Health and Human Services. *Archived Opportunistic Infection Guidelines. http://www.aidsinfo.hih.gov/guidelines/archive/Opportunistic-infection-guidelines/ [accessed on 1 June 2012].*
- Centers for Disease Control and Prevention. *1993 revised classification system for HIV infection and expanded surveillance case definition for AIDS among adolescents and adults. MMWR Recomm Rep* 1992; 41: 1-19.
- Dupon M, Texier-Maugein J, Leroy V, Sentilhes A, Pellegrin JL, Morlat P, Ragnaud JM, Chene G, Dabis F. *Tuberculosis and HIV infection: a cohort study of incidence and susceptibility to antituberculous drugs, Bordeaux, 1985-1993. Groupe d'epidemiologie clinique du sida en aquitaine. AIDS* 1995; 9: 577-83.
- Bisson GP, Gaolathe T, Gross R, Rollins C, Bellamy S, Mogorosi M, Avalos A, Friedman H, Dickinson D, Frank I, et al. *Overestimates of survival after HAART: implications for global scale-up efforts. PLoS One* 2008 ;3: e1725.
- Crum NE, Riffenburgh RH, Wegner S, Agan BK, Tasker SA, Spooner KM, Armstrong AW, Fraser S, Wallace MR. *Comparisons of causes of death and mortality rates among HIV-infected persons: analysis of the pre-, early, and late HAART (highly active antiretroviral therapy) eras. J Acquir Immune Defic Syndr* 2006; 41: 194-200.
- Jain MK, Skiest DJ, Cloud JW, Jain CL, Burns D, Berggren RE. *Changes in mortality related to human immunodeficiency virus infection: Comparative analysis of inpatient deaths in 1995 and in 1999-2000. Clin Infect Dis* 2003; 36: 1030-8.
- Krentz HB, Kliewer G, Gill MJ. *Changing mortality rates and causes of death for HIV-infected individuals living in southern Alberta, Canada from 1984 to 2003. HIV Med* 2005; 6: 99-106.
- Palella FJ Jr, Baker RK, Moorman AC, Chmiel JS, Wood KC, Brooks JT, Holmberg SD. *Mortality in the highly active antiretroviral therapy era: changing causes of death and disease in the HIV Outpatient Study. J Acquir Immune Defic Syndr* 2006; 43: 27-34.

26. Smit C, Geskus R, Walker S, Sabin C, Coutinho R, Porter K, Prins M. *Effective therapy has altered the spectrum of cause-specific mortality following HIV seroconversion. AIDS 2006; 20: 741-9.*
27. Lundberg BE, Davidson AJ, Burman WJ. *Epidemiology of Pneumocystis carinii pneumonia in an era of effective prophylaxis: the relative contribution of non-adherence and drug failure. AIDS 2000; 14: 2559-66.*
28. Moore RD, Chaisson RE. *Natural history of opportunistic disease in an HIV-infected urban clinical cohort. Ann Intern Med 1996; 124: 633-42.*
29. Sullivan JH, Moore RD, Keruly JC, Chaisson RE. *Effect of antiretroviral therapy on the incidence of bacterial pneumonia in patients with advanced HIV infection. Am J Respir Crit Care Med 2000; 162: 64-7.*
30. Wolff AJ, O'Donnell AE. *Pulmonary manifestations of HIV infection in the era of highly active antiretroviral therapy. Chest 2001; 120: 1888-93.*