



# Dimming the Powerhouse: Mitochondrial Dysfunction in the Liver and Skeletal Muscle of Intrauterine Growth Restricted Fetuses

Alexander L. Pendleton<sup>1</sup>, Stephanie R. Wesolowski<sup>2</sup>, Timothy R. H. Regnault<sup>3</sup>, Ronald M. Lynch<sup>1</sup> and Sean W. Limesand<sup>1\*</sup>

<sup>1</sup> School of Animal and Comparative Biomedical Sciences, The University of Arizona, Tucson, AZ, United States, <sup>2</sup> Department of Pediatrics, University of Colorado School of Medicine, Aurora, CO, United States, <sup>3</sup> Department of Physiology and Pharmacology, Western University, London, ON, Canada

## OPEN ACCESS

### Edited by:

Dania Valvi,  
Icahn School of Medicine at  
Mount Sinai,  
United States

### Reviewed by:

Ryan J. Mailloux,  
McGill University, Canada  
Kathy L. Gatford,  
University of Adelaide, Australia

### \*Correspondence:

Sean W. Limesand  
limesand@arizona.edu  
orcid.org/0000-0002-5851-0439

### Specialty section:

This article was submitted to  
Translational Endocrinology,  
a section of the journal  
Frontiers in Endocrinology

**Received:** 01 October 2020

**Accepted:** 22 April 2021

**Published:** 17 May 2021

### Citation:

Pendleton AL, Wesolowski SR,  
Regnault TRH, Lynch RM and  
Limesand SW (2021) Dimming the  
Powerhouse: Mitochondrial  
Dysfunction in the Liver and  
Skeletal Muscle of Intrauterine  
Growth Restricted Fetuses.  
*Front. Endocrinol.* 12:612888.  
doi: 10.3389/fendo.2021.612888

Intrauterine growth restriction (IUGR) of the fetus, resulting from placental insufficiency (PI), is characterized by low fetal oxygen and nutrient concentrations that stunt growth rates of metabolic organs. Numerous animal models of IUGR recapitulate pathophysiological conditions found in human fetuses with IUGR. These models provide insight into metabolic dysfunction in skeletal muscle and liver. For example, cellular energy production and metabolic rate are decreased in the skeletal muscle and liver of IUGR fetuses. These metabolic adaptations demonstrate that fundamental processes in mitochondria, such as substrate utilization and oxidative phosphorylation, are tempered in response to low oxygen and nutrient availability. As a central metabolic organelle, mitochondria coordinate cellular metabolism by coupling oxygen consumption to substrate utilization in concert with tissue energy demand and accretion. In IUGR fetuses, reducing mitochondrial metabolic capacity in response to nutrient restriction is advantageous to ensure fetal survival. If permanent, however, these adaptations may predispose IUGR fetuses toward metabolic diseases throughout life. Furthermore, these mitochondrial defects may underscore developmental programming that results in the sequela of metabolic pathologies. In this review, we examine how reduced nutrient availability in IUGR fetuses impacts skeletal muscle and liver substrate catabolism, and discuss how enzymatic processes governing mitochondrial function, such as the tricarboxylic acid cycle and electron transport chain, are regulated. Understanding how deficiencies in oxygen and substrate metabolism in response to placental restriction regulate skeletal muscle and liver metabolism is essential given the importance of these tissues in the development of later life metabolic dysfunction.

**Keywords:** mitochondrial metabolism, tricarboxylic acid (TCA) cycle, intrauterine growth restriction (IUGR), placental insufficiency, oxidative phosphorylation

## INTRODUCTION

Many cases of intrauterine growth restriction (IUGR) of the fetus are caused by reductions in placental mass and function resulting in lower fetal nutrient and oxygen availability. Fetal development and growth are particularly vulnerable to perturbations in the *in utero* environment, and it is proposed that lower nutrient availability during gestation significantly impacts short- and long-term metabolic regulation (1–5). Glucose is an important and primary substrate for oxidative metabolism in the fetus (6, 7). Consequently, early studies in “small for gestational age” or IUGR neonates have focused on describing the negative effects from hypoglycemia and malnutrition on neonatal growth and metabolism (8–13). These studies laid the foundation for our understanding of neonatal metabolism and the potential responses associated with fetal growth restriction. However, there are gaps in our knowledge regarding how organ specific effects coordinate whole-body substrate utilization in the IUGR fetus.

Prenatal development establishes the foundation for global metabolic regulation and substrate utilization in fetal tissues. Glucose, lactate, and amino acids comprise the primary oxidizable substrates used for energy production and tissue growth in the fetus (14). When the placental transport capacity for nutrients and oxygen becomes limited in IUGR pregnancies, metabolic and endocrine responses are initiated in the fetus to ensure survival (15, 16). Moreover, as the fetal milieu changes, this subjects fetal tissues to hypoxia and hypoglycemia which promotes systemic responses such as increased oxidative stress (17, 18). As a result, two major physiological responses occur out of necessity: stunted growth and metabolic adaptation. Slowing growth lowers the global metabolic burden on the fetus and prioritizes substrate availability for essential organs such as the brain and heart. The skeletal muscle and liver each comprise a small amount of the total fetal weight near term (~10% for skeletal mass and 3–4% for liver mass) (19–22). However, combined, these tissues are responsible for 40–50% of the total fetal oxygen consumption, underscoring their importance as two of the largest metabolic organs in the fetus (19, 23). Therefore, these tissues are at greater risk for developing persisting metabolic adaptations when IUGR occurs.

IUGR neonates are born with lower muscle and liver masses (24–30). The deficiencies in lean mass are retained through adulthood, despite adequate nutrient availability after birth (24, 26, 27, 31–33). This observation is especially important considering that tissue growth is dictated by energy homeostasis, and this balance is governed by substrate utilization and oxidative phosphorylation (34–37). Interestingly, IUGR infants have higher rates of resting energy expenditure, measured within the first few weeks after delivery, and subsequently undergo increased body mass (catch-up growth) (38, 39). However, these neonates fail to adequately increase muscle mass, which potentiates subcutaneous and hepatic fat deposition, and represents a modified metabolic phenotype (34–37, 40–43). The greater adiposity may further serve as a comorbidity that exacerbates the metabolic strain throughout the life-course, including the predisposition to nonalcoholic fatty liver disease (42–47). The life-long metabolic strain induced by post-

natal catch up growth manifests as an increased risk of developing impaired glucose tolerance, dyslipidemia, and hypertension (45, 48). Thus, individuals born IUGR are at risk of increased morbidities due to impaired substrate metabolism combined with lower lean mass and greater adiposity. These observations highlight that placental restriction negatively impacts prenatal metabolism, alters lean-to-fat mass ratios, which, through developmental programming mechanisms, negatively affects postnatal energy balance.

Comprehensive studies evaluating whole-body metabolism and the coordinated tissue-specific responses in IUGR fetuses are beginning to define the impacts of nutrient and oxygen restriction during gestation. However, despite the growing number of experimental models and studies investigating IUGR metabolism, much remains unknown. Given the importance and centrality of mitochondria to substrate utilization and energy balance, the metabolic aberrations observed in IUGR fetuses implies mitochondrial metabolism is adjusted to low nutrient and oxygen concentrations. In this review, we will discuss our current understanding of mitochondrial metabolism in the skeletal muscle and liver of IUGR fetuses and present gaps in the field.

## MAINTENANCE OF OXIDATIVE PHOSPHORYLATION IN MITOCHONDRIA

Oxidative metabolism is predicated on mitochondrial function. Within mitochondria, carbohydrate (pyruvate), amino acid, and fatty acid metabolism intersect in the tricarboxylic acid (TCA) cycle, which requires oxygen to produce the primary cellular energy currency: adenosine triphosphate (ATP). However, utilization of substrates within the mitochondrion is not equal. For example, some metabolites, like lysine and leucine, only enter the TCA cycle only as acetyl-CoA. Alternatively, other substrates, like valine and glutamate, can only enter as TCA cycle intermediates *via* specific carriers. The latter substrate utilization process, known as anaplerosis, is vital to mitochondrial metabolism as it replenishes TCA cycle intermediates. Oxidative phosphorylation is generally limited by the presentation of ADP to the mitochondrion (free ADP), and changes in the concentration of any one substrate affect the utilization of other substrates (49).

In the mitochondrion, ATP is synthesized from the oxidation of pyruvate, amino acids, and lipids. To be utilized, these substrates must be transported into the mitochondrion across the outer and inner mitochondrial membranes. Once inside the mitochondrial matrix, metabolic substrates can enter the TCA cycle as acetyl-CoA or as an intermediate and ultimately results in the production of both NADH and FADH<sub>2</sub>. These reducing equivalents produced from each pass of the TCA cycle are subsequently oxidized at the electron transport chain (ETC) to produce ATP. While acetyl-CoA is the primary substrate for the TCA cycle, the acetyl CoA oxidation capacity of the TCA cycle is dependent upon the availability of TCA cycle intermediates. Specifically, anaplerotic reactions are needed to replace TCA cycle intermediates that are lost through cataplerosis.

The net effects of catabolism and anabolism on energy production define mitochondrial function. The TCA cycle and ETC are intrinsically linked through the redox cycle of NADH and FADH<sub>2</sub> (50, 51). Normally, the flow of electrons starts with the oxidation of NADH and FADH<sub>2</sub> at Complexes I and II, respectively. Alternatively, electrons can enter the ETC, downstream of Complex I, *via* glycerol-3-phosphate dehydrogenase, electron-transferring flavoprotein, or dihydroorotate dehydrogenase (DHODH) (52). As electrons are transported through the ETC, protons move from the matrix to the intermembrane space, creating the proton motive force. The journey of electrons through the ETC ends with their terminal transfer onto oxygen at Complex IV (oxygen consumption). However, because the ETC is not perfectly coupled, electrons can escape the ETC, leading to reactive oxygen species (ROS) production. Simultaneously, the proton motive force is used by ATP synthase to catalyze ATP from ADP and inorganic phosphate (P<sub>i</sub>). The integrated nature of the ETC and TCA cycle means the rate of oxygen consumption in the mitochondria is coupled to the phosphorylation potential [log(ATP)/(ADP) (P<sub>i</sub>)], which means ATP production and utilization are coupled to oxygen consumption rate (OCR) (51, 53–58). As such, conditions that reduce the electron flux through the ETC will also reduce the production of ATP as well as the regeneration of NAD<sup>+</sup>/FADH due to reduced NADH/FADH<sub>2</sub> oxidation (51, 55, 57). Consequently, both cytosolic and mitochondrial enzymes that rely on hydrogen carriers to function, including those in the TCA cycle, are impacted by perturbations in ETC function, which subsequently reduces oxygen consumption and energy production.

## ANIMAL MODELS OF IUGR WITH METABOLIC DYSFUNCTION

Measuring whole-body, tissue, and cellular metabolism requires invasive experiments. As a result, animal models that recapitulate human IUGR are needed to study the link placental insufficiency and the metabolic phenotype of IUGR fetuses. Similar to human IUGR, several animal models of IUGR have been developed that exhibit reductions in lean body mass, lower blood nutrient and/or oxygen concentrations, and develop metabolic syndromes later in life (59–63).

### Rats

Three well-defined rat models of IUGR show fetal and persistent postnatal metabolic consequences in skeletal muscle and hepatic tissue due to reduced nutrient availability during gestation. Gestational maternal caloric restriction (CR), gestational maternal low protein (LP), and uterine artery ligation (UAL) at embryonic day 19 (E19), each causes significant (10–50%) reductions in lean mass which persist into adulthood (31, 40, 60, 64–67). The persistent disparity in lean mass may serve as an IUGR trait that underscores metabolic defects in skeletal muscle and liver function leading to glucose intolerance, fatty liver disease, and altered amino acid metabolism in juveniles with

IUGR (33, 59, 60, 68–72). In addition to low bodyweight, IUGR fetal rats possess defects in oxidative phosphorylation and nutrient signaling in both the skeletal muscle and liver (32, 33, 40, 64, 65, 70, 73–78). Therefore, although the exact mechanisms behind the development of metabolic dysfunction in IUGR rats are unclear, altered mitochondrial function acquired during fetal life is likely a contributing cause to the development of metabolic aberrations later in life.

### Sheep

Experimental models have been developed to induce IUGR in sheep by either reducing placental structure/function or preventing normal placental development. Models that reduce placental structure or function, such as carunclectomy or placental embolization, mimic placental insufficiency and yield fetuses with 15–66% growth restriction compared to matched controls (79–81). Models that inhibit placental development, such as maternal hyperthermia and over-nourished adolescent ewes, also produce IUGR of the fetus. Fetal weights in these sheep models of IUGR are reduced by 30–60% when measured at 0.9 gestation (82–85).

Factors that match closely with the gradual onset of IUGR found in human pregnancies are recapitulated in sheep models (86–88). Placental insufficiency-induced IUGR sheep fetuses have severe nutrient restriction in late gestation that results in hypoxemia, hypoglycemia, as well as reduced transport of amino acids (15, 89–92). To ensure survival, the IUGR sheep fetus copes with lower nutrient and oxygen availability by slowing skeletal muscle growth and increasing hepatic glucose production rates (93–95). These *in utero* adaptations lead to postnatal metabolic dysfunction where young lambs afflicted with IUGR continue to have lower lean masses and skeletal muscle protein contents, altered glucose metabolism and liver function, and greater adiposity (96–100). Considering the mitochondria are the primary site for oxidative metabolism, these adaptations imply IUGR fetuses have altered hepatic and skeletal muscle mitochondrial function.

### Piglets

Natural runtting of piglets (IUGR) arises from a disproportionate supply of nutrients along the uterine horn causing growth restriction of 15–20% of piglets from each litter (101). As a result of *in utero* nutrient restriction, runt piglets exhibit asymmetric growth restriction, increased liver:brain weight ratio, reduced bodyweight at birth, and metabolic perturbations which last into adulthood (62, 102–104). Consistent with human IUGR pathophysiology, the lower lean mass present in IUGR piglets at birth is never fully rectified in adulthood (105, 106). IUGR piglets at term also have a lower capacity for skeletal muscle protein accretion and protein synthesis (107, 108). The impact of IUGR not only decreases liver and skeletal muscle growth, but also decreases the abundances of proteins involved in intermediate metabolism in the liver and energy production in the skeletal muscle (107). As adults, energy production, amino acid catabolism, and glucose metabolism remain dysregulated in both the liver and skeletal muscle (62, 109).

Clues to metabolic adaptation of IUGR piglets may be found in studies using nutrient supplementation. Specifically, mid-gestation arginine/glutamine supplementation of pregnant gilts simultaneously increases litter size and reduces the number of IUGR piglets per litter (108). Conversely, neonatal supplementation of amino acids to IUGR piglets results in hyperammonemia, elevated blood urea concentrations, and death (110). Moreover, during the first 21 days post-parturition, postnatal glucose injections increased IUGR piglet bodyweight compared to non-supplemented IUGR piglets (111). Based on these observations, IUGR piglets may have predetermined fuel preferences that are programmed *in utero*. Thus, in IUGR piglets, the asymmetric growth restriction and metabolic dysfunction indicate defects in mitochondrial function that continue postnatally (112–117).

## MITOCHONDRIAL METABOLISM AND DYSFUNCTION IN ANIMAL MODELS OF IUGR

The conservation and scavenging of oxygen and nutrients from expendable metabolic processes, such as systemic growth, are a necessary adaptation during IUGR to meet basal metabolic demands. Accordingly, because protein synthesis during the latter half of gestation accounts for ~18% of fetal oxidative metabolism, and protein synthesis is an ATP consuming process, slowing protein accretion may be a primary mechanism of conserving energy, oxygen, and nutrients in IUGR fetuses (118, 119). On the other hand, IUGR fetuses have an early activation of hepatic glucose production, an ATP and substrate demanding process that is absent in the normal fetus but activated to counteract hypoglycemia (7, 74, 120). These two observations show that differential metabolic adaptations are needed during IUGR. Further, these pathways likely have tissue-specific regulation that depends on differential enzyme expression in the skeletal muscle and liver. From this, a critical question arises: how are these metabolic processes regulated in skeletal muscle and the liver of IUGR fetus?

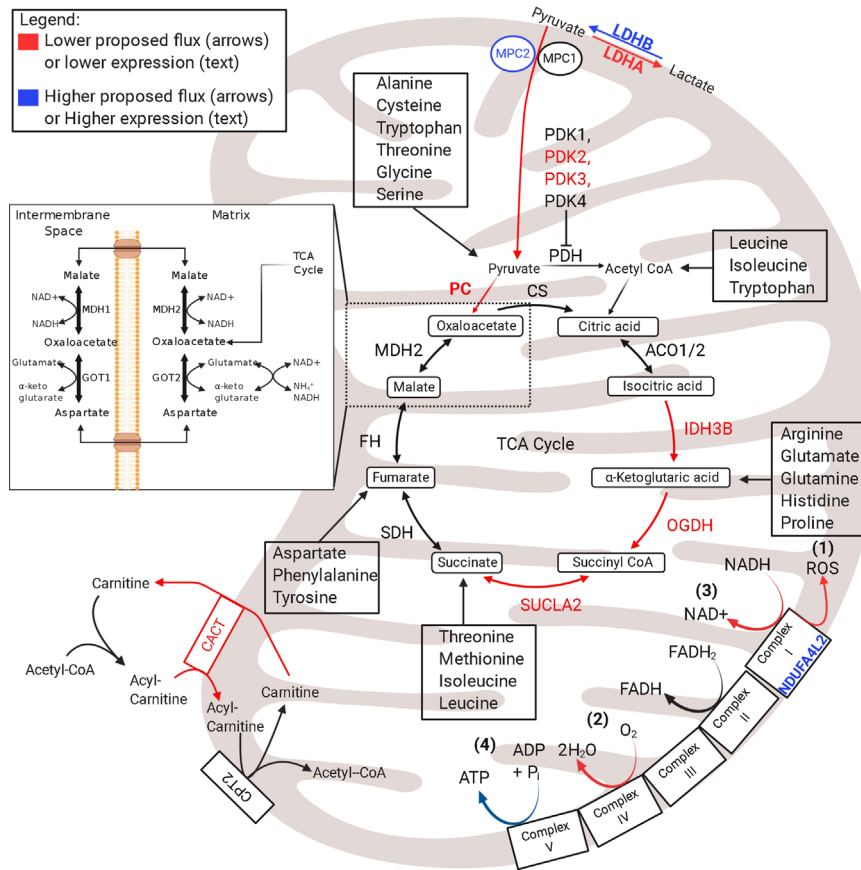
### Skeletal Muscle

In fetal sheep with IUGR, reductions in skeletal muscle oxidative phosphorylation result from chronic reductions in both the ETC activity and TCA cycle protein abundances (121). A modulator of electron transfer to the ETC is NADH dehydrogenase 1 alpha subcomplex, 4-like 2 (NDUFA4L2) (122, 123). NDUFA4L2 is driven by hypoxia-inducible factor 1 $\alpha$  (HIF1 $\alpha$ ), and it incorporates into Complex I and lowers the electron flux through the ETC by functioning as an inhibitor of oxidative phosphorylation (**Figure 1**) (121–123, 125). NDUFA4L2 expression is increased in the skeletal muscle of IUGR sheep fetuses, likely due to chronically sustained HIF1 $\alpha$  activity, thereby exerting a global impact on suppressing whole-body metabolism (126–128). First, the lower electron flux through the ETC and complex 1 will lower the production of ROS, which will potentially protect against oxidative stress found in several pathologies, including IUGR, as a

result of chronic hypoxia (**Figure 1**) (122, 129). Second, the lower electron flux through the ETC will reduce OCR as evidenced by the lower Complex I activity and state 3 (Complex I-mediated) flux observed in the skeletal muscle mitochondria of IUGR sheep fetuses (**Figure 1**) (121). Third, lower ETC electron flux and lower OCR will reduce NADH/FADH<sub>2</sub> regeneration thereby inhibiting TCA cycle enzymes that use NAD<sup>+</sup> as a cofactor (**Figure 1**). This is evidenced by lower abundances of key NAD<sup>+</sup> consuming TCA cycle enzymes isocitrate dehydrogenase (IDH) and 2-oxo-glutarate dehydrogenase, also known as  $\alpha$ -ketoglutarate dehydrogenase (OGDH) (**Figure 1**) (121). Fourth, and finally, concomitantly lowering NADH/FADH<sub>2</sub> production and oxidation may place the skeletal muscle in a lower steady state by limiting energy (ATP) production and ADP rephosphorylation and may have significant consequences on basic cellular metabolic rates. The impact of NDUFA4L2 on whole-body metabolism is demonstrated in transgenic mice with NDUFA4L2 overexpression in the skeletal muscle (122). NDUFA4L2 reduces skeletal muscle mass by ~20%, mirroring the slow muscle growth in IUGR fetuses (122). These adjustments to mitochondrial function lowers the rates of ATP production in sync with other ATP-dependent processes, such as lower Na<sup>+</sup>/K<sup>+</sup> ATPase activity and protein synthesis (130). Therefore, skeletal muscle in the IUGR fetus has lower ETC flux to match lower oxygen availability *via* increased NDUFA4L2, but ATP utilization is reduced to parallel production.

Reduced ETC flux and ATP production indicate that utilization of oxygen and metabolic substrates is curtailed. Hindlimb oxygen uptake (consumption) relative to mass is 29% lower in IUGR fetuses compared to that in controls, which is consistent with depressed oxidative metabolism (94). Despite reductions in substrate oxidation, metabolic quotients for individual substrates were examined to observe substrate preferences for oxidative metabolism (94). Here, substrate oxygen quotients were calculated by dividing the whole blood arterial–venous difference in substrate concentration by the arterial–venous difference in oxygen content, then multiplying by the number of oxygen molecules needed to oxidize one molecule of the nutrient (94, 131). Despite similar glucose + lactate oxygen quotients across the hindlimb of the IUGR fetal sheep, the glucose uptake and lactate output per mole of oxygen consumed by the hind limb are greater (94). Interestingly, the hindlimb amino acid oxygen quotient is significantly reduced in IUGR fetal sheep (94). When the sum of these oxidizable substrates is calculated, they modestly exceed the oxygen consumption rate (nutrient to oxygen quotient is approximately 1), meaning the substrates are meeting the minimal energy requirement of the muscle but are not substantially contributing to tissue accretion (94). The results from the fetal sheep hindlimb reflect findings in the whole fetus where lower fetal uptake of amino acids is the dominant factor limiting growth and is associated with hypoxemia (131). Although the hypoxic induction of NDUFA4L2 will lower oxygen consumption in the mitochondria, additional mechanisms are likely responsible for the reduction in amino acid uptake and oxidation (94, 122, 125, 131, 132). As a result, the skeletal muscle of IUGR fetuses is in a lower metabolic state that is fine-tuned towards maintenance rather than growth by matching substrate utilization to oxygen availability (94, 124).

# Skeletal Muscle

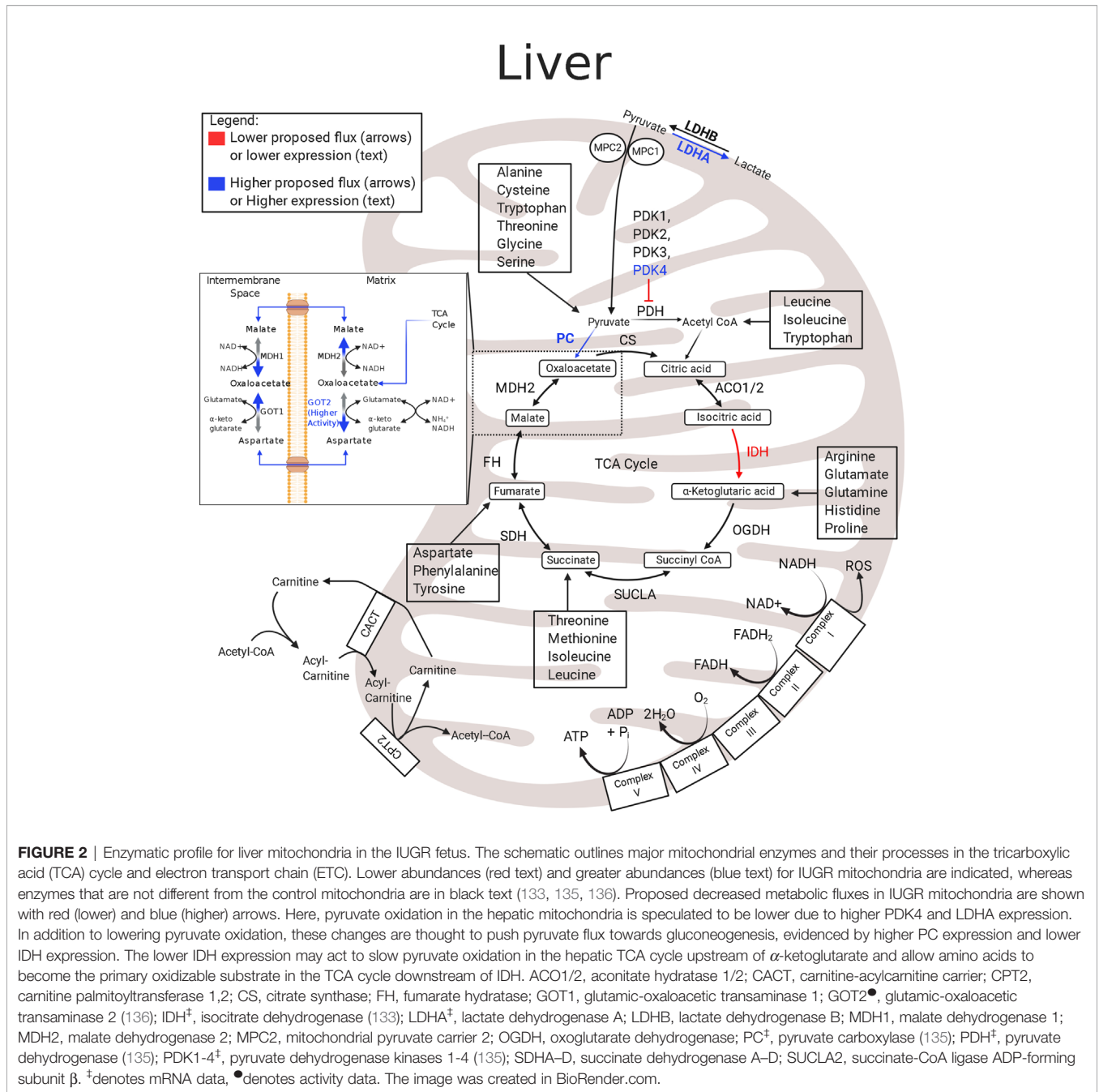


**FIGURE 1** | Enzymatic profile for skeletal muscle mitochondria in the IUGR fetus. The schematic outlines major mitochondrial enzymes and their processes in the tricarboxylic acid (TCA) cycle and in the electron transport chain (ETC). Lower abundances (red text) and greater abundances (blue text) for IUGR mitochondria are indicated, whereas enzymes that are not different from control mitochondria are in black text. Proposed decreased metabolic fluxes in IUGR mitochondria are shown with red (lower) and blue (higher). Here, fluxes of pyruvate, amino acids, and fatty acids are all thought to be lower in the IUGR skeletal muscle due to lower enzyme expression involved in each pathway. Initial pyruvate flux is thought to be hindered by higher MPC2 expression and is believed to be further slowed by lower expressions of IDH, OGDH, and SUCLA2. Because these enzymes are also innately involved in amino acid flux into the TCA cycle, amino acid degradation is also believed to be lower in IUGR skeletal muscle mitochondria. Moreover, higher NDUFA4L2 expression in IUGR skeletal muscle mitochondria is believed to slow electron flux leading to a) lower reactive oxygen species (ROS) production b) lower oxygen consumption rates c) lower NADH oxidation. ACO1/2<sup>†</sup>, aconitate hydratase 1/2 (121); CACT<sup>†</sup>, carnitine–acylcarnitine carrier (121); CPT2<sup>†</sup>, carnitine palmitoyltransferase 1,2 (121); CS<sup>†</sup>, citrate synthase (121); FH<sup>†</sup>, fumarate hydratase (121); GOT1, Glutamic-oxaloacetic transaminase 1; GOT2<sup>†</sup>, glutamic-oxaloacetic transaminase 2 (121); IDH<sup>†</sup>, isocitrate dehydrogenase (121); LDHA<sup>†</sup>, lactate dehydrogenase A (121); LDHB<sup>†</sup>, lactate dehydrogenase B (121); MDH1, malate dehydrogenase 1 (121); MDH2<sup>†</sup>, malate dehydrogenase 2 (121); MPC2<sup>†</sup>, mitochondrial pyruvate carrier 2 (121); NDUFA4L2<sup>†</sup>, NDUFA4 mitochondrial complex associated like 2 (121); OGDH<sup>†</sup>, oxoglutarate dehydrogenase (121); PC<sup>#</sup>, pyruvate carboxylase (121, 124); PDH<sup>#</sup>, pyruvate dehydrogenase (121); PDK1-4<sup>#</sup>, pyruvate dehydrogenase kinases 1-4 (85, 121); SDH<sup>†</sup>, succinate dehydrogenase A–D (121); SUCLA2<sup>†</sup>, succinate-CoA ligase ADP-forming subunit  $\beta$  (121). <sup>†</sup>denotes protein data, <sup>‡</sup>denotes mRNA data, <sup>#</sup>denotes protein and mRNA data. ●denotes activity data. The image was created in BioRender.com.

## Liver

In the IUGR fetus, the liver also has low rates of growth, modified protein synthesis rates, and a low mitochondrial redox state coupled with low concentrations of TCA cycle intermediates (32, 107, 133, 134). Although IUGR sheep hepatocytes are postulated to have lower energy production, the abundances of the hepatic ETC and TCA cycle metabolites appear unaffected, and the expression levels of ETC enzymes are presently unknown

(Figure 2) (133). Hepatic expression of IDH mRNA is lower in IUGR fetal sheep than in controls and may slow TCA cycle functionality upstream of  $\alpha$ -ketoglutarate (133). These differences may reflect the dynamic role of the liver during placental restriction. The IUGR liver has an early activation of glucose production and thus must maintain energy requirements for gluconeogenesis. However, achieving this metabolic goal presents a unique problem to the IUGR liver when trying to



conserve nutrients and energy utilization. Specifically, energy production relies on continuous revolutions of the TCA cycle to reduce cofactors thus maintenance of TCA cycle intermediates. However, the high rate of gluconeogenesis demands a high flux of oxaloacetate out of the TCA cycle, lowering the potential for energy production (ATP and NADH). Therefore, as oxaloacetate leaves the mitochondrial matrix, it must be replenished to retain the functionality of the TCA cycle. Pyruvate is the primary source for both energy production (*via* acetyl-CoA) and gluconeogenesis (*via* oxaloacetate), and increased lactate flux from the skeletal muscle likely counterbalances pyruvate deficits

in the IUGR liver (93, 135). Even so, increased HGP likely requires additional TCA cycle intermediates for both the gluconeogenic substrates and the energy production requirements needed to sustain gluconeogenesis. This may include increased utilization and oxidation of amino acids to supply the carbon and energy substrates for gluconeogenesis, as demonstrated in studies with hypoglycemia-induced gluconeogenesis in the fetus, or increased intrahepatic lactate production and utilization (23, 135). The lower IDH mRNA abundance in the IUGR liver may act to redirect pyruvate flux towards gluconeogenesis, but allows downstream substrates, like

amino acids, to enter the TCA cycle. Thus, in the IUGR fetus the liver may have an increased reliance upon anaplerotic substrates to replenish TCA cycle intermediates compared to the skeletal muscle.

## PYRUVATE: DIFFERENTIAL REGULATION OF PYRUVATE OXIDATION IN IUGR TISSUES

Glucose and lactate oxidation account for ~65% of oxygen consumption in the normally developing sheep fetus (7, 137). However, glucose metabolism in the skeletal muscle and liver is differentially regulated. In the fetus, the muscle is a major consumer of glucose, in contrast to the liver which is a small net consumer of glucose and is capable of producing glucose (6).

The IUGR fetus has tissue specific differences in insulin sensitivity for glucose metabolism (138). IUGR fetuses, studied under basal conditions, have normal or near normal rates of weight-specific, whole-body glucose utilization even with ~30% lower umbilical glucose uptake (6, 139). This reflects the early activation of endogenous glucose production to meet the fetal demand for glucose utilization (93, 140). Furthermore, at the whole-body level, IUGR fetuses have increased insulin sensitivity for glucose utilization given the normal utilization of glucose at lower insulin levels and higher utilization rates at high insulin doses when tested under hyperinsulinemic–euglycemic conditions to measure insulin sensitivity (120, 140). Lastly, the early activation of hepatic glucose production in IUGR fetuses is not suppressed by insulin, demonstrating the early development of liver-specific insulin resistance (120, 134, 139, 141–143). Together, these studies demonstrate that tissues like skeletal muscle are insulin-sensitive for glucose utilization, while the liver has developed insulin resistance and continues to produce glucose for the IUGR fetus (110, 138, 144).

The utilization of pyruvate, the oxidative product of glycolysis and product of lactate oxidation, has profound effects on energy status, redox state, and overall homeostasis. Pyruvate has two primary fates: entrance into the TCA cycle or conversion into lactate, which is a reversible reaction. For TCA cycle entry, pyruvate flux is regulated by pyruvate carboxylase (PC) and pyruvate dehydrogenase (PDH). PDH converts pyruvate to acetyl CoA, and PC is used for the anaplerotic “backfill” of oxaloacetate. Conversely, lactate dehydrogenase (LDH) facilitates the interconversion of pyruvate and lactate, both of which can be excreted. The pyruvate flux into the mitochondrion is regulated by PDH, and PDH activity is inhibited by its phosphorylation status *via* pyruvate dehydrogenase kinases (PDKs) and pyruvate dehydrogenase phosphatases (PDPs), which inactivate or activate PDH, respectively. In IUGR sheep fetuses, the skeletal muscle and liver glycolytic capacity appear normal or increased (85, 124, 135). However, because the skeletal muscle and liver have different metabolic roles in normal fetuses and during IUGR, adaptations in enzymes that regulate pyruvate metabolism are expected to differ (**Figures 1, 2**) (85, 121, 135).

## Skeletal Muscle

Although the skeletal muscle of IUGR fetal sheep has three- to four-fold higher *PDK4* mRNA expression than controls, it has normal PDK4 protein abundance and higher PDH activity (85, 121, 135). Conversely, the protein and mRNA expression of *PC* is lower in the IUGR sheep skeletal muscle (121, 135). The lower *PC* expression and higher PDH activity in the skeletal muscle are conflicting as the lower expression of *PC* represents lower anaplerosis, and the higher activity of the PDH pathway represents enhanced pyruvate oxidation. However, this response may indicate, in part, that the minimal needs of the muscle can be met with pyruvate conversion to acetyl CoA making the IUGR skeletal muscle less reliant upon anaplerotic reactions through *PC*. These data may explain the disassociation between glucose utilization and oxidation discussed above.

Normal rates of pyruvate oxidation with greater PDH activity indicate deficiencies in pyruvate transport into the mitochondria of the IUGR skeletal muscle. The abundance of mitochondrial pyruvate carrier 2 (MPC2) is lower in the IUGR sheep skeletal muscle mitochondria (**Figure 1**) (121). Less MPC2 will restrict the transport of pyruvate into the mitochondria for PDH conversion. Due to the normal glycolytic capacity in IUGR sheep skeletal muscle, the inhibition of pyruvate flux into the mitochondrial matrix will lead to multiple metabolic outcomes (124). First, pyruvate will be converted to lactate prior to the TCA cycle, and this outcome is associated with greater intramuscular pyruvate concentrations and normal or increased plasma lactate concentrations in IUGR sheep fetuses (124). Second, by preventing pyruvate entry into the mitochondrial matrix, the matrix pyruvate concentrations will be lower, which will inhibit PDK4 activity, thereby leading to higher PDH activity, as evidenced by lower phosphorylation of PDH in the IUGR sheep skeletal muscle (85). Another fate for pyruvate may be conversion to alanine, consistent with increased Cahill cycling, and higher plasma alanine concentrations are observed in human and sheep IUGR fetuses (2, 124). Cahill cycling will keep skeletal muscle pyruvate oxidation low while also providing gluconeogenic substrates to the liver (133).

## Liver

In the fetal liver, under normal conditions, substrates are stored in the form of glycogen, used in protein synthesis, or used for energy production. Importantly, the fetal liver also normally has a high uptake of gluconeogenic substrates, yet it does not perform gluconeogenesis. The largest carbon sources for the fetal liver come from amino acids and lactate, with lesser contribution from glucose and a net output of pyruvate (23, 145, 146). However, under abnormal conditions, such as IUGR, increased gluconeogenesis is required to subsidize placental deficits in glucose supply to the fetus. While the carbon sources for increased gluconeogenesis are not known, if the IUGR fetus used pyruvate or lactate, this would necessitate an increased pyruvate to glucose conversion by modulating the abundances of enzymes that govern hepatic pyruvate metabolism to support gluconeogenic flux (**Figure 2**). In support of this, the IUGR sheep liver has increased PFK1

(phosphofructokinase 1), PDK4, and PC mRNA expression when compared to controls, along with increased expression of gluconeogenic genes, Phosphoenolpyruvate carboxykinase 1 and 2 (PCK1 and PCK2) (135). Curiously, IUGR fetuses also have increased *LDHA* mRNA expression which is suspected to increase intrahepatic lactate production (135). Taken together, these data suggest that increased PDK4 inhibits PDH and, with increased PC, favors conversion of pyruvate to oxaloacetate. Oxaloacetate is shuttled to the cytosol where PCK1 catalyzes the rate limiting step in gluconeogenesis and the resulting phosphoenolpyruvate (PEP) is used to synthesize glucose. Increased PCK2 also may catalyze the mitochondrial conversion of oxaloacetate to PEP. Additionally, increased *LDHA* may be important to produce lactate and regenerate NAD<sup>+</sup> to sustain increased glycolysis *via* predicted increased PFK1 activity and maintain redox balance. Overall, these adaptations would permit a shift in substrate metabolism and energy production to support glucose production.

### Liver–Muscle Crosstalk

Evidence supports tissue-specific responses in the liver and skeletal muscle metabolism and crosstalk between these organs. Insight into interdependent metabolic regulation is realized from experiments on genetically engineered mice utilizing a skeletal muscle knockout (*skmKO*) of the MPC1 gene. Here, utilizing a *skmKO* of MPC1 reduces pyruvate flux through the MPC complex because MPC1 and MPC2 are both necessary for the functional MPC (147). Moreover, a knockout of MPC1 leading to a dysfunctional MPC may result in an increased reliance upon pyruvate–alanine cycling for forward TCA cycle flux, rather than anaplerotic filling *via* PC, as well as adaptive glutaminolysis (148). The former parallels the enzyme profile and predictions for alanine production in IUGR skeletal muscle, whereas the latter pathway is not expected in the IUGR muscle for reasons presented below (**Figure 1**) (148). Furthermore, this knockout model exhibits greater skeletal muscle lactate production, hepatic glucose production, and peripheral glucose disposal, all of which are found in the IUGR fetus (148). MPC1<sup>*skm*<sup>-/-</sup></sup> mice also have greater skeletal muscle fatty acid oxidation which acts to supplement acetyl CoA and succinate; this adaptation is likely specific to adult—rather than fetal—physiology (148). Due to lower rates of fatty acid oxidation in fetal tissues, the same metabolic flexibility observed in adult skeletal muscle is not likely to exist in IUGR fetuses. Nonetheless, the MPC1 mutation in the skeletal muscle enhances Cori and Cahill Cycle activity and indicates an intricate level of metabolic regulation between the skeletal muscle and liver that may be representative of aspects found in IUGR metabolism.

### AMINO ACIDS: DIVERGENT METABOLIC RESPONSES IN SKELETAL MUSCLE AND LIVER OF THE IUGR FETUS

The metabolism of amino acids supports oxidative phosphorylation and gluconeogenesis through reactions in the mitochondrion.

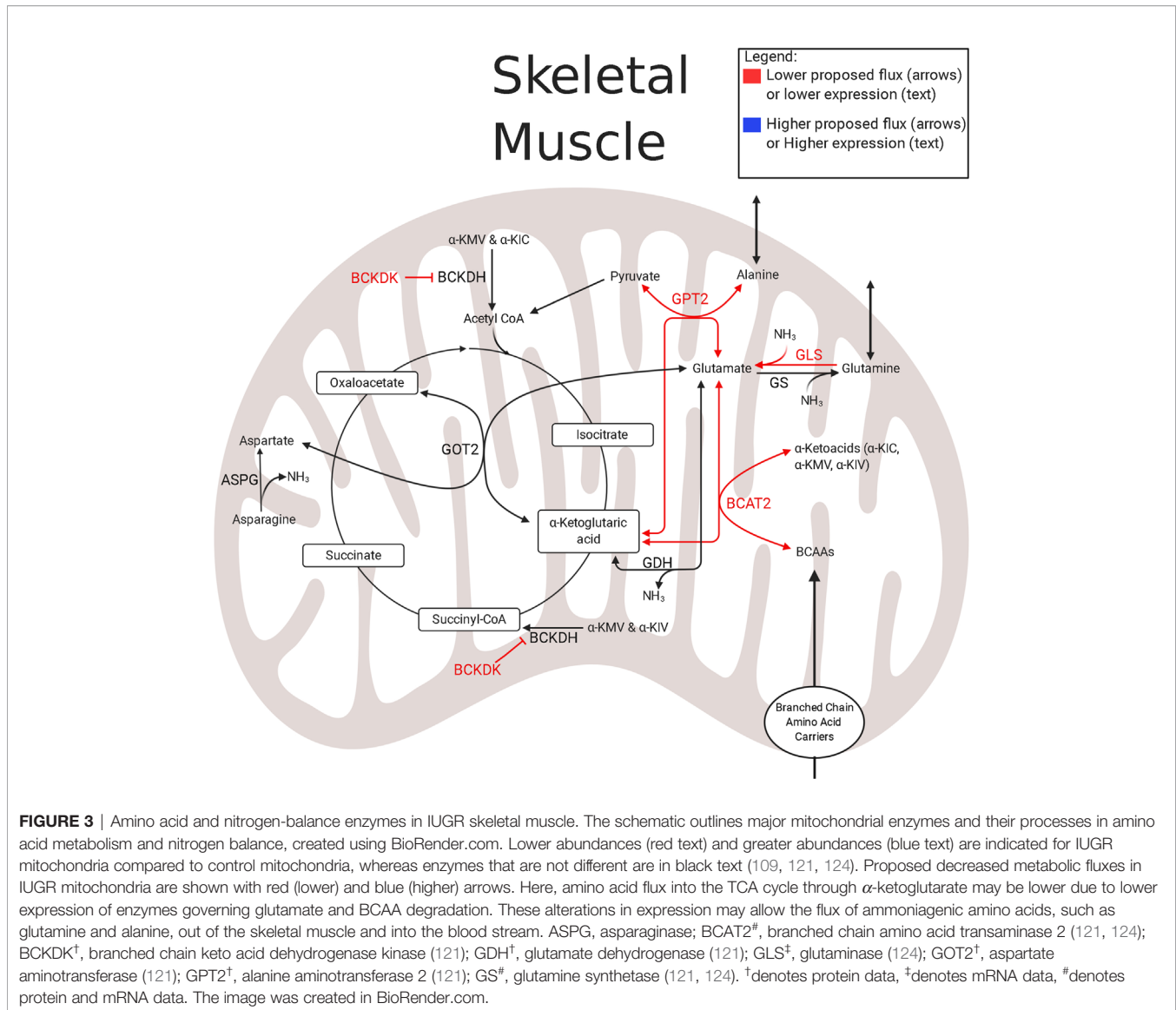
Within the mitochondrial matrix, all 20 standard, proteinogenic amino acids (except cysteine, alanine, and histidine) have metabolic pathways which enter the TCA cycle. Though cysteine, alanine, and histidine do not enter the matrix, they can be converted into pyruvate or other amino acids, which can then be catabolized in the TCA cycle. In normally developing fetuses, amino acids are critical oxidative substrates, and the accretion of amino acids into proteins is an essential component for fetal growth. A common, overlapping feature between human IUGR and animal models of IUGR is reduced placental transfer of certain essential amino acids (134, 149–152). Although amino acids are critical substrates, specific mitochondrial amino acid metabolism in the skeletal muscle and liver of IUGR fetuses is largely unexplored. Furthermore, tissue-specific differences for amino acid utilization are expected in the IUGR fetus.

### Skeletal Muscle

In the skeletal muscle of IUGR sheep fetuses, substrate oxidation is modified through lower isocitrate dehydrogenase 3B (*IDH3B*), Succinate CoA ligase (*SUCLA2*), and OGDH abundance (**Figure 1**). Within the TCA cycle, *IDH* and *OGDH* act as rate limiting enzymes that regulate the rate of oxidation to meet the energy needs of the cell. Moreover, *OGDH* and *SUCLA2* act as key anaplerotic gateways controlling much of the amino acid flux into the TCA cycle through the oxidation of  $\alpha$ -ketoglutarate and succinyl-CoA, respectively. Therefore, downregulating the abundances of all of these enzymes establishes a complex substrate regulating system: the oxidation of upstream TCA cycle intermediates, including acetyl CoA, is inhibited by low *IDH* and *OGDH* abundances, and the anaplerotic flux of amino acids into downstream TCA cycle intermediates is inhibited by low *OGDH* and *SUCLA2* abundances. In addition to the lower *IDH*, *OGDH*, and *SUCLA2* concentrations, abundances of enzymes involved in branched-chain amino acid (BCAA) catabolism are lower, which will further reduce TCA cycle activity as BCAAs enter as acetyl CoA (leucine and isoleucine) or succinyl CoA (isoleucine and valine). Not only is TCA cycle activity depressed in IUGR fetal skeletal muscle, but it also appears to be less reliant upon amino acid substrates (94, 124).

IUGR sheep fetal hindlimbs have lower net uptake rates of a variety of amino acids such as BCAAs, alanine, glycine, and glutamine (124). Coupled with the observation of lower abundances of mitochondrial enzymes associated with amino acid metabolism, amino acid oxidation is generally lower in IUGR skeletal muscle (94). In the muscle mitochondria of the IUGR sheep fetus, the first step of BCAA metabolism appears to be hindered by low expression of branched-chain aminotransferase 2 (*BCAT2*) (121, 124) (**Figure 3**). Conversely, the expression of the negative regulator, Branched Chain Keto Acid Dehydrogenase Kinase (*BCKDK*), is either lower or unchanged in both rat and sheep IUGR models (65, 121). These observations are conflicting, but clues to why these adaptations are advantageous to the IUGR skeletal muscle may lie within nitrogen disposal (**Figure 3**). In IUGR sheep fetuses, the abundance of glutamate–pyruvate transaminase 2 (*GPT2*) is lower in the skeletal muscle mitochondria, but the abundances of glutamate dehydrogenase (*GDH*), glutamate synthetase (*GLS*),





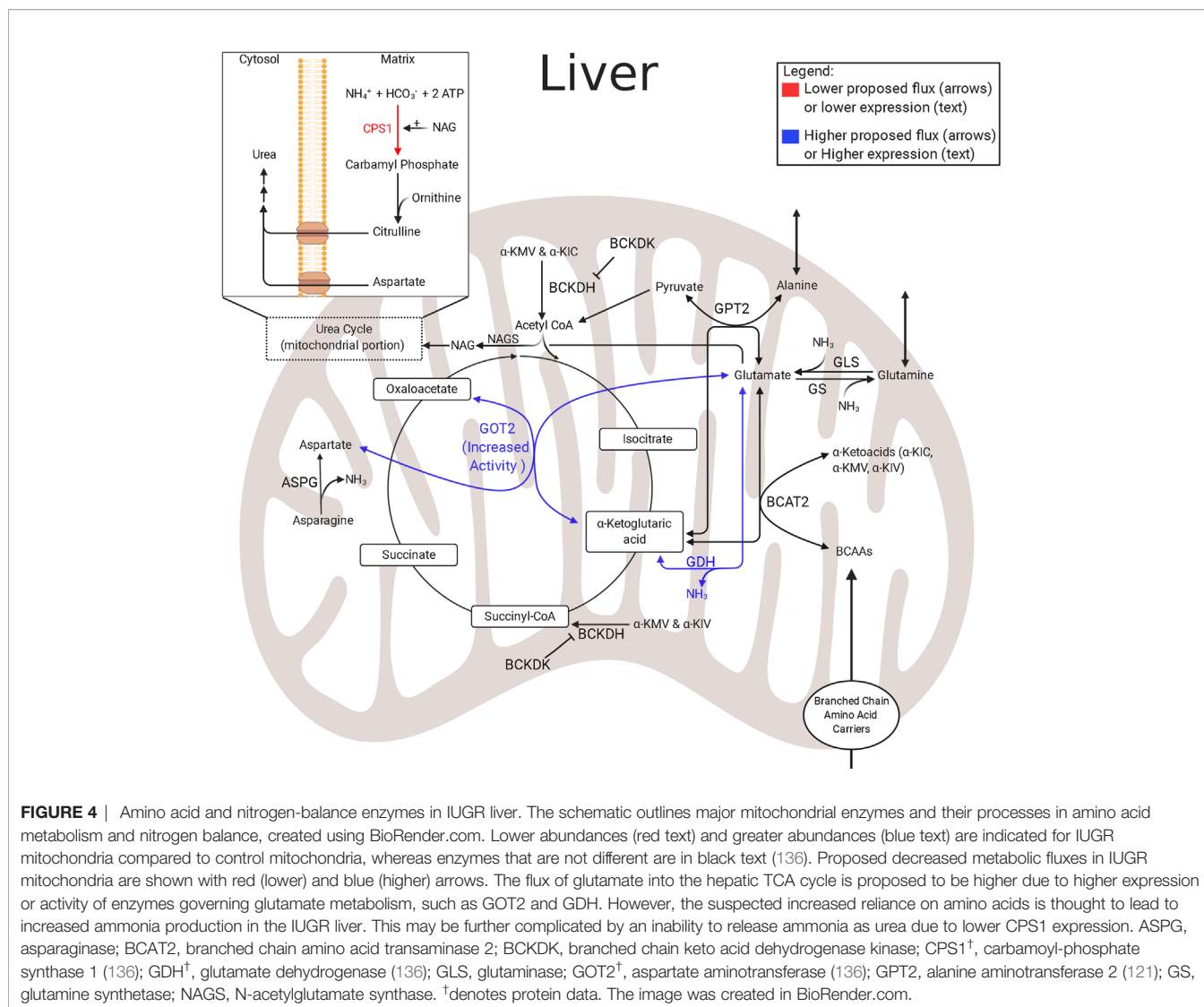
and aspartate amino transferase (GOT2) are all unchanged (121, 124). Together, these alterations to enzyme abundances may represent an adaptation by IUGR skeletal muscle to increase nitrogen disposal and increase the efflux of gluconeogenic amino acids to the liver as they are all linked through the use of  $\alpha$ -ketoglutarate and glutamate (124). Unfortunately, on its own, this enzyme profile is insufficient to decipher substrate flux, which identifies critical gaps for future studies to elucidate the amino acid metabolism in IUGR skeletal muscle.

## Liver

In normally growing fetuses, the hepatic uptake of essential and gluconeogenic amino acids is high (145, 146). Though amino acids are necessary to fetal metabolism, studies in fetal lambs and neonatal piglets show lower amino acid degradation and lower mitochondrial activity in the IUGR liver (133, 153). Further metabolomic studies of hepatic amino acid utilization in IUGR

sheep fetuses show higher concentrations of BCAAs and alanine, while aspartate concentrations are lower (133). Interestingly, although amino acid degradation is lower in the IUGR liver, the lower amino acid degradation was primarily associated with arginine, histidine, proline, and tryptophan metabolic pathways—the first three pathways converge exclusively at  $\alpha$ -ketoglutarate and indicate lower anaplerotic flux through  $\alpha$ -ketoglutarate (**Figure 4**) (65). Furthermore, lower aspartate concentrations observed in the IUGR liver are indicative of adaptations which may be intended to mitigate high nitrogen concentrations that result from increased hepatic amino acid oxidation. Specifically, the IUGR skeletal muscle continually provides the liver with gluconeogenic amino acids, such as alanine and glutamine; a reaction that rids itself of ammonium while providing substrates to the liver for gluconeogenesis (124).

As the liver uses amino acids as energy substrates, they are deaminated, and ammonia is produced as a byproduct.

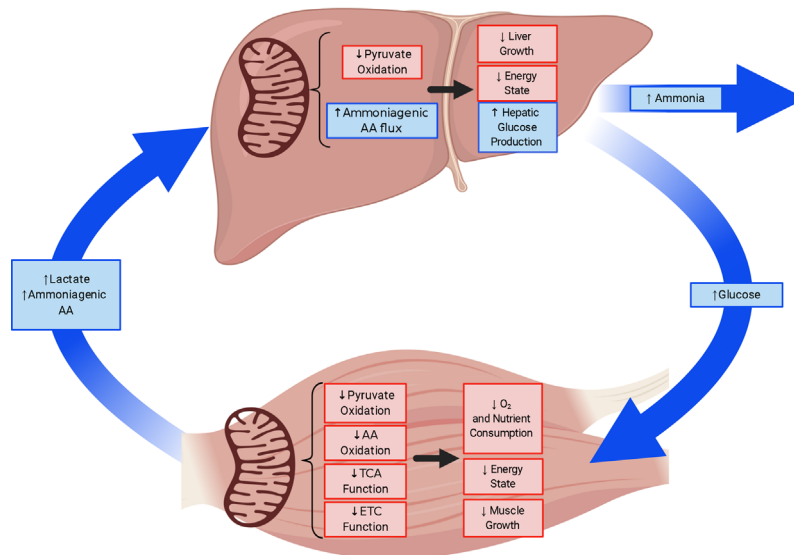


Ammonia is toxic and is therefore typically excreted from the liver as innocuous urea. A common complication of being born IUGR is hyperammonemia (154, 155). This indicates that increased deamination of amino acids may persist due to lower abundances of enzymes responsible for the preceding steps of hepatic urea production, such as carbamoyl-phosphate synthase 1 (CPS1), in the mitochondria (Figure 4) (136, 154–156). This presents a difficult situation for the IUGR liver because the costs associated with hepatic gluconeogenesis cause the liver to become inundated with ammonia. Therefore, additional mechanisms are needed to manage excess hepatic ammonia concentrations. One relevant pathway to manage nitrogen balance is the malate–aspartate shuttle, which is also a primary energy shuttle between the mitochondria and cytosol (Figure 2). However, further studies are needed to resolve the mechanisms underlying hyperammonemia present in IUGR fetuses.

Gluconeogenesis relies on oxaloacetate as a substrate. However, the mitochondrial membrane is impermeable to

oxaloacetate, and oxaloacetate must be converted to either malate or aspartate for transport (Figure 2). Although commonly grouped together as the “malate–aspartate shuttle,” each component has a distinct function. The malate shuttle requires a reducing step to carry oxaloacetate and electrons in the form of malate. Conversely, the aspartate shuttle relies on the availability of glutamate and  $\alpha$ -ketoglutarate to carry oxaloacetate and nitrogen in the form of aspartate. These distinctions are important as the proportion of oxaloacetate carried by each of the shuttles additionally depends on the cytosolic redox state (NADH : NAD<sup>+</sup> ratio) as well as the mitochondrial redox state. Moreover, the source of gluconeogenic fuels impacts which shuttle is used. If pyruvate is derived from lactate, the cytosolic NADH/NAD<sup>+</sup> ratio will remain stable or increased, and the need for cytosolic reducing equivalents will be low, so oxaloacetate transport *via* the aspartate shuttle will predominate. Conversely, if pyruvate is derived from amino acids, no cytosolic reducing equivalents are

## Skeletal Muscle : Liver Crosstalk



**FIGURE 5** | Skeletal muscle and liver metabolic cross-talk in IUGR fetuses. The schematic outlines the tissue metabolism outcomes due to mitochondrial adaptation in the skeletal muscle and liver of IUGR fetuses, created using BioRender.com. Lower responses (red) and greater responses (blue) are shown for IUGR mitochondria and whole tissue. The IUGR skeletal muscle is thought to be in a low energy, slow growing state in which substrate oxidation rates are lower. The adaptation by the IUGR skeletal muscle is thought to conserve oxygen, but also increase Cori (lactate) and Cahill (alanine) cycling. Conversely, the IUGR liver is proposed to use pyruvate supplemented with ammoniagenic amino acids to sustain increased glucose production. However, in the process of ammoniagenic amino acid degradation, this may lead to increased release of ammonia.

produced. However, because gluconeogenesis requires glyceraldehyde-phosphate dehydrogenase, and this enzyme requires NADH, transport of oxaloacetate *via* the malate shuttle is necessary.

In IUGR sheep fetuses, the proportions of lactate and amino acids used for hepatic gluconeogenesis is unknown (133, 134, 138, 142). Studies investigating liver bioenergetics in IUGR rat fetuses have found discordant cytosolic and mitochondrial redox states, indicated by an increased cytosolic NAD<sup>+</sup>/NADH ratio, but a lower mitochondrial NAD<sup>+</sup>/NADH ratio (31, 32). Lower cytosolic, but higher mitochondrial, redox states suggest the malate shuttle is the preferred system used by IUGR mitochondria to produce cytosolic reducing equivalents and sustain gluconeogenesis. However, the aspartate shuttle may also be used to rid the IUGR hepatic mitochondria of excess ammonia (133). Additional investigations on mitochondrial metabolomics and proteomics are required to define adaptations in liver mitochondrial function.

### LIPIDS: A MINOR ROLE IN FETAL METABOLISM

Compared to other metabolites discussed lipid metabolism remains relatively unexplored in both normally grown and

IUGR fetuses. During pregnancy, maternal triglyceride (TAG) and free fatty acid (FFA) concentrations in the plasma range from 0.2 to 0.3 M for rats, sheep, and humans (157). Fetal plasma concentrations of FFAs are substantially lower than maternal concentrations (157). The concentration gradient might reflect low rates of placental transfer although small FFAs are able to cross the human placenta (158). However, fetal uptakes of FFA represent <10% of the total daily umbilical carbon uptake in both sheep and human fetuses (14, 159). Predictably, the FFA oxidation rate in the fetus is relatively low indicating FFAs are incorporated into membranes or stored in the liver (160, 161). Despite low lipid oxidation rates, based on the relative contribution to the fetal metabolic rate (oxygen consumption), a small contribution to energy production may potentially affect the IUGR fetal outcomes. Interestingly, hepatic lipid content in IUGR fetal sheep is similar to controls (133), yet some studies demonstrate increased hepatic lipid accumulation in SGA or preterm human neonates (42, 43). Furthermore, the expression of lipid synthesis enzymes are lower in IUGR sheep fetuses suggesting that any lipids stored in the liver are exogenous and are supplied from the placenta (133). Conversely, maternal nutrient restriction in pregnant ewes leads to greater intramuscular triglyceride (IMTG) stores of the fetus (162). These observations imply that lipid oxidation, although already low in normal fetuses, is further reduced in IUGR fetuses.

Moreover, the IUGR skeletal muscle and liver have different mechanisms to reduce lipid oxidation. In the skeletal muscle, IUGR sheep fetuses have a lower abundance of Carnitine-acylcarnitine translocase (CACT), which is responsible for the transport of carnitine and carnitine-fatty acid complexes across the inner mitochondrial membrane (**Figure 1**) (121). Low CACT concentrations would promote acetyl CoA oxidation from pyruvate or amino acids rather than FFAs. Therefore, lipid oxidation is likely regulated in a tissue-specific manner in IUGR fetuses.

## CONCLUSION

Animal models of IUGR provide valuable insight into the developmental origins of metabolic dysfunction. These models, while diverse in their etiology of IUGR, provide considerable evidence of irregularities in mitochondrial function. Skeletal muscle and liver serve as major metabolic tissues but exhibit distinct metabolic responses to fetal conditions causing IUGR (**Figure 5**). In the skeletal muscle of the IUGR fetus, the adaptations culminate in the creation of a “thrifty phenotype” that is slow growing with a low-energy demand. Phenotypic changes in IUGR muscle indicate that rates of glucose utilization and oxidation are disjointed and that the metabolic rate, measured with hindlimb oxygen consumption, is depressed. The greater utilization rates were hypothesized to promote anaerobic energy production *via* glycolysis (135). However as presented in this review, mitochondrial dysfunction is a primary site for metabolic dysregulation and programming which underlies a global physiological response in IUGR fetuses.

## REFERENCES

- Cosmi E, Fanelli T, Visentin S, Trevisanuto D, Zanardo V. Consequences in Infants That Were Intrauterine Growth Restricted. *J Pregnancy* (2011) 2011:364381. doi: 10.1155/2011/364381
- Abd El-Wahed MA, El-Farghali OG, ElAbd HSA, El-Desouky ED, Hassan SM. Metabolic Derangements in IUGR Neonates Detected at Birth Using UPLC-MS. *Egypt J Med Hum Genet* (2017) 18:281–7. doi: 10.1016/j.ejmhg.2016.12.002
- Hales CN, Barker DJP. Type 2 (Non-Insulin-Dependent) Diabetes Mellitus: The Thrifty Phenotype Hypothesis. *Int J Epidemiol* (2013) 42:1215–22. doi: 10.1093/ije/dyt133
- Roseboom TJ. Epidemiological Evidence for the Developmental Origins of Health and Disease: Effects of Prenatal Undernutrition in Humans. *J Endocrinol* (2019) 242:T135–44. doi: 10.1530/JOE-18-0683
- Ylihärtilä H, Kajantie E, Osmond C, Forsén T, Barker DJP, Eriksson JG. Birth Size, Adult Body Composition and Muscle Strength in Later Life. *Int J Obes* (2007) 31:1392–9. doi: 10.1038/sj.ijo.0803612
- Hay WW. Placental-Fetal Glucose Exchange and Fetal Glucose Metabolism. *Trans Am Clin Climatol Assoc* (2006) 117:321–40.
- Hay WW, Myers SA, Sparks JW, Wilkening RB, Meschia G, Battaglia FC. Glucose and Lactate Oxidation Rates in the Fetal Lamb. *Exp Biol Med* (2013) 173:553–63. doi: 10.3181/00379727-173-41686
- Hay WW. *Intrauterine Growth Retardation (Nestle Nutrition Workshop Series 18)*. 1st ed. J Senterre, editor. New York: Nestle Nutrition Services (1989).
- Grauauug A. Neonatal Hypoglycaemia. *Med J Aust* (1965) 1:455–9. doi: 10.5694/j.1326-5377.1965.tb71817.x
- Sann L, Ruitton A, Mathieu M, Lasne Y. Effect of Intravenous Hydrocortisone Administration on Glucose Homeostasis in Small for Gestational Age Infants. *Acta Paediatr* (1979) 68:113–8. doi: 10.1111/j.1651-2227.1979.tb04970.x
- Haymond MW, Karl IE, Pagliara AS. Increased Gluconeogenic Substrates in the Small-for-Gestational-Age Infant. *N Engl J Med* (1974) 291:322–8. doi: 10.1056/NEJM197408152910702
- Williams PR, Fiser RH, Sperling MA, oh W. Effects of Oral Alanine Feeding on Blood Glucose, Plasma Glucagon and Insulin Concentrations in Small-for-Gestational-Age Infants. *N Engl J Med* (1975) 292:612–4. doi: 10.1056/NEJM197503202921204
- Khouzami VA, Ginsburg DS, Daikoku NH, Johnson JWC. The Glucose Tolerance Test as a Means of Identifying Intrauterine Growth Retardation. *Am J Obstet Gynecol* (1981) 139:423–6. doi: 10.1016/0002-9378(81)90319-7
- Battaglia FC, Meschia G. Principal Substrates of Fetal Metabolism. *Physiol Rev* (1978) 58:499–527. doi: 10.1152/physrev.1978.58.2.499
- Pardi G, Marconi AM, Cetin I. Placental-Fetal Interrelationship in IUGR Fetuses - A Review. *Placenta* (2002) 23:S136–41. doi: 10.1053/plac.2002.0802
- Regnault TRH, Galan HL, Parker TA, Anthony RV. Placental Development in Normal and Compromised Pregnancies - A Review. *Placenta* (2002) 23: S119–29. doi: 10.1053/plac.2002.0792
- Giussani DA, Camm EJ, Niu Y, Richter HG, Blanco CE, Gottschalk R, et al. Developmental Programming of Cardiovascular Dysfunction by Prenatal Hypoxia and Oxidative Stress. *PLoS One* (2012) 7:e31017. doi: 10.1371/journal.pone.0031017
- Rashid CS, Bansal A, Simmons RA. Oxidative Stress, Intrauterine Growth Restriction, and Developmental Programming of Type 2 Diabetes. *Physiology* (2018) 33:348–59. doi: 10.1152/physiol.00023.2018

Specifically, in IUGR skeletal muscle there is evidence for reduced TCA and ETC activity. Evidence for lower TCA is founded on reduced abundances of several enzymes and MPC2, whereas the ETC inhibition of Complex I activity result from the induction of the hypoxic-induced NDUFA4L2 inhibition. In contrast, to meet the increased energy demands associated with hepatic glucose production, the IUGR liver must utilize gluconeogenic substrates, likely a combination of pyruvate and amino acids, to provide the carbon substrates and energy co-factors to fuel gluconeogenesis. The mitochondrial metabolic adaptations of the skeletal muscle and liver and the modified crosstalk between these organs are important for minimizing energy demands in the IUGR fetus. However, as global metabolic aberrations develop in the fetus, they promote persistent adaptations that are deleterious throughout the individual's life course.

## AUTHOR CONTRIBUTIONS

AP was responsible for analysis and interpretation of data, drafting of manuscript, and critical revision. TR, SW, RL and SL were responsible for the interpretation of data and critical revision. All authors contributed to the article and approved the submitted version.

## FUNDING

NIH RO1 DK084842, NIH T32 HL007249, & R01-DK108910 supported this work.

19. Carlyle A. An Integration of the Total Oxygen Consumption of the Sheep Foetus From That of the Tissues. *J Physiol* (1948) 107:355–64. doi: 10.1113/jphysiol.1948.sp004280
20. McCoard SA, McNabb WC, Peterson SW, McCutcheon SN, Harris PM. Muscle Growth, Cell Number, Type and Morphometry in Single and Twin Fetal Lambs During Mid to Late Gestation. *Reprod Fertil Dev* (2000) 12:319–27. doi: 10.1071/rd99059
21. Gimondo P, Mirk P, La Bella A, Messina G, Pizzi C. Sonographic Estimation of Fetal Liver Weight: An Additional Biometric Parameter for Assessment of Fetal Growth. *J Ultrasound Med* (1995) 14:327–33. doi: 10.7863/jum.1995.14.5.327
22. Mitropoulos G, Scurry J, Cussen L. Organ Weight/Bodyweight Ratios: Growth Rates of Fetal Organs in the Latter Half of Pregnancy With a Simple Method for Calculating Mean Organ Weights. *J Paediatr Child Health* (1992) 28:236–9. doi: 10.1111/j.1440-1754.1992.tb02653.x
23. Houin SS, Rozance PJ, Brown LD, Hay WW, Wilkening RB, Thorn SR. Coordinated Changes in Hepatic Amino Acid Metabolism and Endocrine Signals Support Hepatic Glucose Production During Fetal Hypoglycemia. *Am J Physiol Endocrinol Metab* (2015) 308:E306–14. doi: 10.1152/ajpendo.00396.2014
24. Walther FJ. Growth and Development of Term Disproportionate Small-for-Gestational Age Infants at the Age of 7 Years. *Early Hum Dev* (1988) 18:1–11. doi: 10.1016/0378-3782(88)90038-2
25. Brandt I, Sticker EJ, Lentze MJ. Catch-Up Growth of Head Circumference of Very Low Birth Weight, Small for Gestational Age Preterm Infants and Mental Development to Adulthood. *J Pediatr* (2003) 142:463–70. doi: 10.1067/mpd.2003.149
26. Sharma D, Farahbakhsh N, Shastri S, Sharma P. Intrauterine growth restriction - part 2. *J Matern Fetal Neonatal Med* (2016) 29(24):4037–48. doi: 10.3109/14767058.2016.1154525
27. Karlberg J, Albertsson-Wikland K. Growth in Full-Term Small-for-Gestational-Age Infants: From Birth to Final Height. *Pediatr Res* (1995) 38:733–9. doi: 10.1203/00006450-199511000-00017
28. Villar J, Smeriglio V, Martorell R, Brown CH, Klein RE. Heterogeneous Growth and Mental Development of Intrauterine Growth-Retarded Infants During the First 3 Years of Life. *Pediatrics* (1984) 74:783–91.
29. Villar J, Belizán JM, Spalding J, Klein RE. Postnatal Growth of Intrauterine Growth Retarded Infants. *Early Hum Dev* (1982) 6:265–71. doi: 10.1016/0378-3782(82)90120-7
30. Peleg D, Kennedy CM, Hunter SK. Intrauterine Growth Restriction: Identification and Management. *Am Fam Physician* (1998) 58:453–60.
31. Lane RH, Flozak AS, Ogata ES, Bell GI, Simmons RA. Altered Hepatic Gene Expression of Enzymes Involved in Energy Metabolism in the Growth-Retarded Fetal Rat. *Pediatr Res* (1996) 39:390–4. doi: 10.1203/00006450-199603000-00003
32. Ogata ES, Swanson SL, Collins JW, Finley SL. Intrauterine Growth Retardation: Altered Hepatic Energy and Redox States in the Fetal Rat. *Pediatr Res* (1990) 27:56–63. doi: 10.1203/00006450-199001000-00017
33. Lane RH, Chandorkar AK, Flozak AS, Simmons RA. Intrauterine Growth Retardation Alters Mitochondrial Gene Expression and Function in Fetal and Juvenile Rat Skeletal Muscle. *Pediatr Res* (1998) 43:563–70. doi: 10.1203/00006450-199805000-00001
34. Seppet E, Gruno M, Peetsalu A, Gizatullina Z, Nguyen HP, Vielhaber S, et al. Mitochondria and Energetic Depression in Cell Pathophysiology. *Int J Mol Sci* (2009) 10:2252–303. doi: 10.3390/ijms10052252
35. Krebs HA. Rate Control of the Tricarboxylic Acid Cycle. *Adv Enzyme Regul* (1970) 8:335–53. doi: 10.1016/0065-2571(70)90028-2
36. Chance B, Lees H, Postgate JR. The Meaning of “Reversed Electron Flow” and “High Energy Electron” in Biochemistry. *Nature* (1972) 238:330–1. doi: 10.1038/238330a0
37. Chance B, Hess B. Spectroscopic Evidence of Metabolic Control. *Science* (80-) (1959) 129:700–8. doi: 10.1126/science.129.3350.700
38. Chessex P, Reichman B, Verellen G, Putet G, Smith JM, Heim T, et al. Metabolic Consequences of Intrauterine Growth Retardation in Very Low Birthweight Infants. *Pediatr Res* (1984) 18:709–13. doi: 10.1203/00006450-198408000-00006
39. Davies PSW. Total Energy Expenditure in Small for Gestational Age Infants. *Arch Dis Child Fetal Neonatal Ed* (1996) 74:F208–10. doi: 10.1136/fn.74.3.F208
40. Selak MA, Storey BT, Peterside I, Simmons RA. Impaired Oxidative Phosphorylation in Skeletal Muscle of Intrauterine Growth-Retarded Rats. *Am J Physiol Endocrinol Metab* (2003) 285:E130–7. doi: 10.1152/ajpendo.00322.2002
41. Klingenberg M. The ADP,ATP Shuttle of the Mitochondrion. *Trends Biochem Sci* (1979) 4:249–52. doi: 10.1016/0968-0004(79)90215-9
42. Vasu V, Thomas EL, Durighel G, Hyde MJ, Bell JD, Modi N. Early Nutritional Determinants of Intrahepatocellular Lipid Deposition in Preterm Infants at Term Age. *Int J Obes* (2013) 37:500–4. doi: 10.1038/ijo.2012.213
43. Thomas EL, Parkinson JR, Hyde MJ, Yap IKS, Holmes E, Doré CJ, et al. Aberrant Adiposity and Ectopic Lipid Deposition Characterize the Adult Phenotype of the Preterm Infant. *Pediatr Res* (2011) 70:507–12. doi: 10.1203/PDR.0b013e31822d7860
44. Reynolds CM, Vickers MH. The Role of Adipokines in Developmental Programming: Evidence From Animal Models. *J Endocrinol* (2019) 242: T81–94. doi: 10.1530/JOE-18-0686
45. Cho WK, Suh BK. Catch-Up Growth and Catch-Up Fat in Children Born Small for Gestational Age. *Korean J Pediatr* (2016) 59:1–7. doi: 10.3345/kjp.2016.59.1.1
46. Barker DJP, Martyn CN, Osmond C, Hales CN, Fall CHD. Growth In Utero and Serum Cholesterol Concentrations in Adult Life. *Br Med J* (1993) 307:1524–7. doi: 10.1136/bmj.307.6918.1524
47. Barker DJP. Fetal Programming of Coronary Heart Disease. *Trends Endocrinol Metab* (2002) 13:364–8. doi: 10.1016/S1043-2760(02)00689-6
48. Labayan I, Moreno LA, Ruiz JR, González-Gross M, Wärnberg J, Breidenassel C, et al. Small Birth Weight and Later Body Composition and Fat Distribution in Adolescents: The AVENA Study. *Obesity* (2008) 16:1680–6. doi: 10.1038/oby.2008.258
49. Brown LD, Kohn JR, Rozance PJ, Hay WW, Wesolowski SR. Exogenous Amino Acids Suppress Glucose Oxidation and Potentiate Hepatic Glucose Production in Late Gestation Fetal Sheep. *Am J Physiol Regul Integr Comp Physiol* (2017) 312:R654–63. doi: 10.1152/ajpregu.00502.2016
50. Akram M. Citric Acid Cycle and Role of its Intermediates in Metabolism. *Cell Biochem Biophys* (2014) 68:475–8. doi: 10.1007/s12013-013-9750-1
51. Fernie AR, Carrari F, Sweetlove LJ. Respiratory Metabolism: Glycolysis, the TCA Cycle and Mitochondrial Electron Transport. *Curr Opin Plant Biol* (2004) 7:254–61. doi: 10.1016/j.pbi.2004.03.007
52. Scialò F, Fernández-Ayala DJ, Sanz A. Role of Mitochondrial Reverse Electron Transport in ROS Signaling: Potential Roles in Health and Disease. *Front Physiol* (2017) 8:1–7. doi: 10.3389/fphys.2017.00428
53. Reynafarje BD, Ferreira J. Oxidative Phosphorylation: Kinetic and Thermodynamic Correlation Between Electron Flow, Proton Translocation, Oxygen Consumption and ATP Synthesis Under Close to In Vivo Concentrations of Oxygen. *Int J Med Sci* (2008) 5:143–51. doi: 10.7150/ijms.5.143
54. Zhang Y, Marcillat O, Giulivi C, Ernster L, Davies KJA. The Oxidative Inactivation of Mitochondrial Electron Transport Chain Components and Atpase. *J Biol Chem* (1990) 265:16330–6. doi: 10.1016/S0021-9258(17)46227-2
55. Kamzolova SV, Shishkanova NV, Morgunov IG, Finogenova TV. Oxygen Requirements for Growth and Citric Acid Production of *Yarrowia Lipolytica*. *FEMS Yeast Res* (2003) 3:217–22. doi: 10.1016/S1567-1356(02)00188-5
56. Wheaton WW, Chandel NS. Hypoxia. 2. Hypoxia Regulates Cellular Metabolism. *Am J Physiol Cell Physiol* (2011) 300:C385–93. doi: 10.1152/ajpcell.00485.2010
57. Semenza GL. Oxygen-Dependent Regulation of Mitochondrial Respiration by Hypoxia-Inducible Factor 1. *Biochem J* (2007) 405:1–9. doi: 10.1042/BJ20070389
58. García-Ruiz C, Baulies A, Mari M, García-Rovés PM, Fernandez-Checa JC. Mitochondrial Dysfunction in non-Alcoholic Fatty Liver Disease and Insulin Resistance: Cause or Consequence? *Free Radic Res* (2013) 47:854–68. doi: 10.3109/10715762.2013.830717
59. Lane RH, MacLennan NK, Daood MJ, Hsu JL, Janke SM, Pham TD, et al. IUGR Alters Postnatal Rat Skeletal Muscle Peroxisome Proliferator-Activated Receptor- $\gamma$  Coactivator-1 Gene Expression in a Fiber Specific Manner. *Pediatr Res* (2003) 53:994–1000. doi: 10.1203/01.PDR.0000064583.40495.51

60. Yamada M, Wolfe D, Han G, French SW, Ross MG, Desai M. Early Onset of Fatty Liver in Growth-Restricted Rat Fetuses and Newborns. *Congenit Anom (Kyoto)* (2011) 51:167–73. doi: 10.1111/j.1741-4520.2011.00336.x
61. Salam RA, Das JK, Bhutta ZA. Impact of Intrauterine Growth Restriction on Long-Term Health. *Curr Opin Clin Nutr Metab Care* (2014) 17:249–54. doi: 10.1097/MCO.0000000000000051
62. Shen L, Gan M, Zhang S, Ma J, Tang G, Jiang Y, et al. Transcriptome Analyses Reveal Adult Metabolic Syndrome With Intrauterine Growth Restriction in Pig Models. *Front Genet* (2018) 9:1–12. doi: 10.3389/fgene.2018.00291
63. Gatford KL, Simmons RA, De Blasio MJ, Robinson JS, Owens JA. Review: Placental Programming of Postnatal Diabetes and Impaired Insulin Action After IUGR. *Placenta* (2010) 31:S60–5. doi: 10.1016/j.placenta.2009.12.015
64. Garg M, Thamocharan M, Dai Y, Thamocharan S, Shin BC, Stout D, et al. Early Postnatal Caloric Restriction Protects Adult Male Intrauterine Growth-Restricted Offspring From Obesity. *Diabetes* (2012) 61:1391–8. doi: 10.2337/db11-1347
65. Kloesz JL, Serdikoff CM, MacLennan NK, Adibi SA, Lane RH. Uteroplacental Insufficiency Alters Liver and Skeletal Muscle Branched-Chain Amino Acid Metabolism in Intrauterine Growth-Restricted Fetal Rats. *Pediatr Res* (2001) 50:604–10. doi: 10.1203/00006450-200111000-00012
66. Park KS, Kim SK, Kim MS, Cho EY, Lee JH, Lee K-U, et al. Fetal and Early Postnatal Protein Malnutrition Cause Long-Term Changes in Rat Liver and Muscle Mitochondria. *J Nutr* (2003) 133:3085–90. doi: 10.1093/jn/133.10.3085
67. Xing Y, Zhang J, Wei H, Zhang H, Guan Y, Wang X, et al. Reduction of the PI3K/Akt Related Signaling Activities in Skeletal Muscle Tissues Involves Insulin Resistance in Intrauterine Growth Restriction Rats With Catch-Up Growth. *PLoS One* (2019) 14:e0216665. doi: 10.1371/journal.pone.0216665
68. Sohi G, Barry EJ, Velenosi TJ, Urquhart BL, Hardy DB. Protein Restoration in Low-Birth-Weight Rat Offspring Derived From Maternal Low-Protein Diet Leads to Elevated Hepatic CYP3A and CYP2C11 Activity in Adulthood. *Drug Metab Dispos* (2014) 42:221–8. doi: 10.1124/dmd.113.053538
69. Lane RH, Kelley DE, Ritov VH, Tsirka AE, Gruetzmacher EM. Altered Expression and Function of Mitochondrial  $\beta$ -Oxidation Enzymes in Juvenile Intrauterine-Growth-Retarded Rat Skeletal Muscle. *Pediatr Res* (2001) 50:83–90. doi: 10.1203/00006450-200107000-00016
70. Zinkhan EK, Zalla JM, Carpenter JR, Yu B, Yu X, Chan G, et al. Intrauterine Growth Restriction Combined With a Maternal High-Fat Diet Increases Hepatic Cholesterol and Low-Density Lipoprotein Receptor Activity in Rats. *Physiol Rep* (2016) 4:e12862. doi: 10.14814/phy2.12862
71. Langley-Evans SC, Gardner DS, Jackson AA. Maternal Protein Restriction Influences the Programming of the Rat Hypothalamic-Pituitary-Adrenal Axis. *J Nutr* (1996) 126:1578–85. doi: 10.1093/jn/126.6.1578
72. Simmons RA, Templeton LJ, Gertz SJ. Intrauterine Growth Retardation Leads to the Development of Type 2 Diabetes in the Rat. *Diabetes* (2001) 50:2279–86. doi: 10.2337/diabetes.50.10.2279
73. Germani D, Puglianiello A, Cianfarani S. Uteroplacental Insufficiency Down Regulates Insulin Receptor and Affects Expression of Key Enzymes of Long-Chain Fatty Acid (LCFA) Metabolism in Skeletal Muscle at Birth. *Cardiovasc Diabetol* (2008) 7:14. doi: 10.1186/1475-2840-7-14
74. Peterside IE, Selak MA, Simmons RA. Impaired Oxidative Phosphorylation in Hepatic Mitochondria in Growth-Retarded Rats. *Am J Physiol Endocrinol Metab* (2003) 285:E1258–66. doi: 10.1152/ajpendo.00437.2002
75. Choi GY, Tosh DN, Garg A, Mansano R, Ross MG, Desai M. Gender-Specific Programmed Hepatic Lipid Dysregulation in Intrauterine Growth-Restricted Offspring. *Am J Obstet Gynecol* (2007) 196:477.e1–7. doi: 10.1016/j.ajog.2007.02.024
76. Zeng Y, Gu P, Liu K, Huang P. Maternal Protein Restriction in Rats Leads to Reduced PGC-1 $\alpha$  Expression Via Altered DNA Methylation in Skeletal Muscle. *Mol Med Rep* (2013) 7:306–12. doi: 10.3892/mmr.2012.1134
77. Garg M, Thamocharan M, Pan G, Lee PWN, Devaskar SU. Early Exposure of the Pregestational Intrauterine and Postnatal Growth-Restricted Female Offspring to a Peroxisome Proliferator-Activated Receptor- $\gamma$  Agonist. *Am J Physiol Endocrinol Metab* (2010) 298:E489–98. doi: 10.1152/ajpendo.00361.2009
78. Ogata ES, Bussey ME, Finley S. Altered Gas Exchange, Limited Glucose and Branched Chain Amino Acids, and Hypoinsulinism Retard Fetal Growth in the Rat. *Metabolism* (1986) 35:970–7. doi: 10.1016/0026-0495(86)90064-8
79. Bhide A, Vuolteenaho O, Haapsamo M, Erkinaro T, Rasanen J, Acharya G. Effect of Hypoxemia With or Without Increased Placental Vascular Resistance on Fetal Left and Right Ventricular Myocardial Performance Index in Chronically Instrumented Sheep. *Ultrasound Med Biol* (2016) 42:2589–98. doi: 10.1016/j.ultrasmedbio.2016.07.006
80. Supramaniam VG, Jenkin G, Loose J, Wallace EM, Miller SL. Chronic Fetal Hypoxia Increases Activin A Concentrations in the Late-Pregnant Sheep. *BJOG* (2006) 113:102–9. doi: 10.1111/j.1471-0528.2005.00791.x
81. Zhang S, Barker P, Botting KJ, Roberts CT, McMillan CM, McMillan IC, et al. Early Restriction of Placental Growth Results in Placental Structural and Gene Expression Changes in Late Gestation Independent of Fetal Hypoxemia. *Physiol Rep* (2016) 4:e13049. doi: 10.14814/phy2.13049
82. Carr DJ, Aitken RP, Milne JS, David AL, Wallace JM. Fetoplacental Biometry and Umbilical Artery Doppler Velocimetry in the Overnourished Adolescent Model of Fetal Growth Restriction. *Am J Obstet Gynecol* (2012) 207:141.e6–15. doi: 10.1016/j.ajog.2012.05.008
83. Wallace JM. Competition for Nutrients in Pregnant Adolescents: Consequences for Maternal, Conceptus and Offspring Endocrine Systems. *J Endocrinol* (2019) 242:T1–T19. doi: 10.1530/JOE-18-0670
84. Macko AR, Yates DT, Chen X, Shelton LA, Kelly AC, Davis MA, et al. Adrenal Demedullation and Oxygen Supplementation Independently Increase Glucose-Stimulated Insulin Concentrations in Fetal Sheep With Intrauterine Growth Restriction. *Endocrinology* (2016) 157:2104–15. doi: 10.1210/en.2015-1850
85. Pendleton AL, Humphreys LR, Davis MA, Camacho LE, Anderson MJ, Limesand SW. Increased Pyruvate Dehydrogenase Activity in Skeletal Muscle of Growth-Restricted Ovine Fetuses. *Am J Physiol Integr Comp Physiol* (2019) 317:R513–20. doi: 10.1152/ajpregu.00106.2019
86. Miller J, Turan S, Baschat AA. Fetal Growth Restriction. *Semin Perinatol* (2008) 32:274–80. doi: 10.1053/j.semperi.2008.04.010
87. Ananth CV, Peltier MR, Chavez MR, Kirby RS, Getahun D, Vintzileos AM. Recurrence of Ischemic Placental Disease. *Obstet Gynecol* (2007) 110:128–33. doi: 10.1097/01.AOG.0000266983.77458.71
88. Anthony RV, Scheaffer AN, Wright CD, Regnault TR. Ruminant Models of Prenatal Growth Restriction. *Reprod Suppl* (2003) 61:183–94. doi: 10.1530/biosci.5.014
89. Brown LD, Rozance PJ, Thorn SR, Friedman JE, Hay WW. Acute Supplementation of Amino Acids Increases Net Protein Accretion in IUGR Fetal Sheep. *Am J Physiol Metab* (2012) 303:E352–64. doi: 10.1152/ajpendo.00059.2012
90. Limesand SW, Rozance PJ, Brown LD, Hay WW. Effects of Chronic Hypoglycemia and Euglycemic Correction on Lysine Metabolism in Fetal Sheep. *Am J Physiol Endocrinol Metab* (2009) 296:E879–87. doi: 10.1152/ajpendo.90832.2008
91. Limesand SW, Camacho LE, Kelly AC, Antolic AT. Impact of Thermal Stress on Placental Function and Fetal Physiology. *Anim Reprod* (2018) 15:886–98. doi: 10.21451/1984-3143-AR2018-0056
92. Gagnon R. Placental Insufficiency and its Consequences. *Eur J Obstet Gynecol Reprod Biol* (2003) 110:S99–107. doi: 10.1016/S0301-2115(03)00179-9
93. Wesolowski SR, Hay WW. Role of Placental Insufficiency and Intrauterine Growth Restriction on the Activation of Fetal Hepatic Glucose Production. *Mol Cell Endocrinol* (2016) 435:61–8. doi: 10.1016/j.mce.2015.12.016
94. Rozance PJ, Zastoupil L, Wesolowski SR, Goldstrohm DA, Strahan B, Cree-Green M, et al. Skeletal Muscle Protein Accretion Rates and Hindlimb Growth are Reduced in Late Gestation Intrauterine Growth-Restricted Fetal Sheep. *J Physiol* (2018) 596:67–82. doi: 10.1113/JP275230
95. Yates DT, Clarke DS, Macko AR, Anderson MJ, Shelton LA, Nearing M, et al. Myoblasts From Intrauterine Growth-Restricted Sheep Fetuses Exhibit Intrinsic Deficiencies in Proliferation That Contribute to Smaller Semitendinosus Myofibres. *J Physiol* (2014) 592:3113–25. doi: 10.1113/jphysiol.2014.272591
96. Camacho LE, Chen X, Hay WW, Limesand SW. Enhanced Insulin Secretion and Insulin Sensitivity in Young Lambs With Placental Insufficiency-Induced Intrauterine Growth Restriction. *Am J Physiol Integr Comp Physiol* (2017) 313:R101–9. doi: 10.1152/ajpregu.00068.2017

97. Greenwood PL, Hunt AS, Hermanson JW, Bell AW. Effects of Birth Weight and Postnatal Nutrition on Neonatal Sheep: II. Skeletal Muscle Growth and Development. *J Anim Sci* (2000) 78:50–61. doi: 10.2527/2000.78150x
98. Greenwood PL, Slepets RM, Hermanson JW, Bell AW. Intrauterine Growth Retardation is Associated With Reduced Cell Cycle Activity, But Not Myofibre Number, in Ovine Fetal Muscle. *Reprod Fertil Dev* (1999) 11:281–91. doi: 10.1071/rd99054
99. De Blasio MJ, Gatford KL, McMillen IC, Robinson JS, Owens JA. Placental Restriction of Fetal Growth Increases Insulin Action, Growth, and Adiposity in the Young Lamb. *Endocrinology* (2007) 148:1350–8. doi: 10.1210/en.2006-0653
100. George LA, Zhang L, Tuersunjiang N, Ma Y, Long NM, Uthlaut AB, et al. Early Maternal Undernutrition Programs Increased Feed Intake, Altered Glucose Metabolism and Insulin Secretion, and Liver Function in Aged Female Offspring. *Am J Physiol Regul Integr Comp Physiol* (2012) 302:R795–804. doi: 10.1152/ajpregu.00241.2011
101. Wu G, Bazer FW, Cudd TA, Meininger CJ, Spencer TE. Maternal Nutrition and Fetal Development. *J Nutr* (2004) 134:2169–72. doi: 10.1093/jn/134.9.2169
102. Bauer R, Walter B, Brust P, Füchtner F, Zwiener U. Impact of Asymmetric Intrauterine Growth Restriction on Organ Function in Newborn Piglets. *Eur J Obstet Gynecol Reprod Biol* (2003) 110:S40–9. doi: 10.1016/S0301-2115(03)00171-4
103. Bauer R, Walter B, Hoppe A, Gaser E, Lampe V, Kauf E, et al. Body Weight Distribution and Organ Size in Newborn Swine (Sus Scrofa Domestica) - A Study Describing an Animal Model for Asymmetrical Intrauterine Growth Retardation. *Exp Toxicol Pathol* (1998) 50:59–65. doi: 10.1016/S0940-2993(98)80071-7
104. Mellor DJ, Cockburn F. @ a Comparison of Energy Metabolism in the New-Born Infant, Piglet and Lamb. *Q J Exp Physiol* (1986) 71:361–79. doi: 10.1113/expphysiol.1986.sp002995
105. Handel SE, Stickland NC. The Growth and Differentiation of Porcine Skeletal Muscle Fibre Types and the Influence of Birthweight. *J Anat* (1987) 152:107–19.
106. Bérard J, Pardo CE, Béthaz S, Kreuzer M, Bee G. Intrauterine Crowding Decreases Average Birth Weight and Affects Muscle Fiber Hyperplasia in Piglets. *J Anim Sci* (2010) 88:3242–50. doi: 10.2527/jas.2010-2867
107. Wang J, Chen L, Li D, Yin Y, Wang X, Li P, et al. Intrauterine Growth Restriction Affects the Proteomes of the Small Intestine, Liver, and Skeletal Muscle in Newborn Pigs. *J Nutr* (2008) 138:60–6. doi: 10.1093/jn/138.1.60
108. Wu G, Bazer FW, Burghardt RC, Johnson GA, Kim SW, Li XL, et al. Impacts of Amino Acid Nutrition on Pregnancy Outcome in Pigs: Mechanisms and Implications for Swine Production. *J Anim Sci* (2010) 88:E195–204. doi: 10.2527/jas.2009-2446
109. Liu J, Chen D, Yao Y, Yu B, Mao X, He J, et al. Intrauterine Growth Retardation Increases the Susceptibility of Pigs to High-Fat Diet-Induced Mitochondrial Dysfunction in Skeletal Muscle. *PLoS One* (2012) 7:e34835. doi: 10.1371/journal.pone.0034835
110. Jamin A, D'Inca R, Le Floc'h N, Kuster A, Orsonneau JL, Darmaun D, et al. Fatal Effects of a Neonatal High-Protein Diet in Low-Birth-Weight Piglets Used as a Model of Intrauterine Growth Restriction. *Neonatology* (2010) 97:321–8. doi: 10.1159/000260135
111. Engelsmann MN, Hansen CF, Nielsen MN, Kristensen AR, Amdi C. Glucose Injections at Birth, Warmth and Placing at a Nurse Sow Improve the Growth of IUGR Piglets. *Animals* (2019) 9:519. doi: 10.3390/ani9080519
112. Lynegaard JC, Hansen CF, Kristensen AR, Amdi C. Body Composition and Organ Development of Intra-Uterine Growth Restricted Pigs at Weaning. *Animal* (2020) 14:322–9. doi: 10.1017/S175173111900171X
113. Pond WG, Maurer RR, Klindt J. Fetal Organ Response to Maternal Protein Deprivation During Pregnancy in Swine. *J Nutr* (1991) 121:504–9. doi: 10.1093/jn/121.4.504
114. Poore KR, Fowden AL. The Effects of Birth Weight and Postnatal Growth Patterns on Fat Depth and Plasma Leptin Concentrations in Juvenile and Adult Pigs. *J Physiol* (2004) 558:295–304. doi: 10.1113/jphysiol.2004.061390
115. Poore K, Fowden A. The Effect of Birth Weight on Glucose Tolerance in Pigs at 3 and 12 Months of Age. *Diabetologia* (2002) 45:1247–54. doi: 10.1007/s00125-002-0849-y
116. Poore KR, Forhead AJ, Gardner DS, Giussani DA, Fowden AL. The Effects of Birth Weight on Basal Cardiovascular Function in Pigs at 3 Months of Age. *J Physiol* (2002) 539:969–78. doi: 10.1113/jphysiol.2001.012926
117. Poore KR, Fowden AL. The Effect of Birth Weight on Hypothalamo-Pituitary-Adrenal Axis Function in Juvenile and Adult Pigs. *J Physiol* (2003) 547:107–16. doi: 10.1113/jphysiol.2002.024349
118. Kennaugh JM, Bell AW, Teng C, Meschia G, Battaglia F. Ontogenetic Changes in the Rates of Protein Synthesis and Leucine Oxidation During Fetal Life. *Pediatr Res* (1987) 22:688–92. doi: 10.1203/00006450-198712000-00015
119. Garlick PJ, Burk TL, Swick RW. Protein Synthesis and RNA in Tissues of the Pig. *Am J Physiol* (1976) 230:1108–12. doi: 10.1152/ajplegacy.1976.230.4.1108
120. Thorn SR, Brown LD, Rozance PJ, Hay WW, Friedman JE. Increased Hepatic Glucose Production in Fetal Sheep With Intrauterine Growth Restriction is Not Suppressed by Insulin. *Diabetes* (2013) 62:65–73. doi: 10.2337/db11-1727
121. Pendleton AL, Antolic AT, Kelly AC, Davis MA, Camacho LE, Doubleday K, et al. Lower Oxygen Consumption and Complex I Activity in Mitochondria Isolated From Skeletal Muscle of Fetal Sheep With Intrauterine Growth Restriction. *Am J Physiol Metab* (2020) 319:E67–80. doi: 10.1152/ajpendo.00057.2020
122. Chaillou T, Hynynen H, Ferreira D, Pironti G, Kenne E, Andersson DC, et al. NDUFA4L2 – Connecting Metabolic Signals and Mitochondrial Function in Cardiac and Skeletal Muscle. *Free Radic Biol Med* (2016) 100:S186. doi: 10.1016/j.freeradbiomed.2016.10.511
123. Lai RKH, Xu IMJ, Chiu DKC, Tse APW, Wei LL, Law CT, et al. NDUFA4L2 Fine-Tunes Oxidative Stress in Hepatocellular Carcinoma. *Clin Cancer Res* (2016) 22:3105–17. doi: 10.1158/1078-0432.CCR-15-1987
124. Chang EI, Wesolowski SR, Gilje EA, Baker PR, Reisz JA, D'Alessandro A, et al. Skeletal Muscle Amino Acid Uptake is Lower and Alanine Production is Greater in Late Gestation Intrauterine Growth Restricted Fetal Sheep Hindlimb. *Am J Physiol Integr Comp Physiol* (2019) 317:R615–29. doi: 10.1152/ajpregu.00115.2019
125. Tello D, Balsa E, Acosta-Iborra B, Fuertes-Yebra E, Elorza A, Ordóñez Á, et al. Induction of the Mitochondrial NDUFA4L2 Protein by HIF-1 $\alpha$  Decreases Oxygen Consumption by Inhibiting Complex I Activity. *Cell Metab* (2011) 14:768–79. doi: 10.1016/j.cmet.2011.10.008
126. Orgeig S, McGillick EV, Botting KJ, Zhang S, McMillen IC, Morrison JL. Increased Lung Prolyl Hydroxylase and Decreased Glucocorticoid Receptor are Related to Decreased Surfactant Protein in the Growth-Restricted Sheep Fetus. *Am J Physiol Cell Mol Physiol* (2015) 309:L84–97. doi: 10.1152/ajplung.00275.2014
127. McGillick EV, Orgeig S, Morrison JL. Regulation of Lung Maturation by Prolyl Hydroxylase Domain Inhibition in the Lung of the Normally Grown and Placentally Restricted Fetus in Late Gestation. *Am J Physiol Integr Comp Physiol* (2016) 310:R1226–43. doi: 10.1152/ajpregu.00469.2015
128. McGillick EV, Orgeig S, Morrison JL. Structural and Molecular Regulation of Lung Maturation by Intratracheal Vascular Endothelial Growth Factor Administration in the Normally Grown and Placentally Restricted Fetus. *J Physiol* (2016) 594:1399–420. doi: 10.1113/JP271113
129. Kushnareva Y, Murphy AN, Andreyev A. Complex I-mediated Reactive Oxygen Species Generation: Modulation by Cytochrome C and NAD(P)<sup>+</sup> Oxidation-Reduction State. *Biochem J* (2002) 368:545–53. doi: 10.1042/BJ20021121
130. Stremming J, Jansson T, Powell TL, Rozance PJ, Brown LD. Reduced Na<sup>+</sup>K<sup>+</sup>-ATPase Activity may Reduce Amino Acid Uptake in Intrauterine Growth Restricted Fetal Sheep Muscle Despite Unchanged Ex Vivo Amino Acid Transporter Activity. *J Physiol* (2020) 598:1625–39. doi: 10.1113/JP278933
131. Regnault TRH, De Vrijer B, Galan HL, Wilkening RB, Battaglia FC, Meschia G. Umbilical Uptakes and Transplacental Concentration Ratios of Amino Acids in Severe Fetal Growth Restriction. *Pediatr Res* (2013) 73:602–11. doi: 10.1038/pr.2013.30
132. Brown LD. Endocrine Regulation of Fetal Skeletal Muscle Growth: Impact on Future Metabolic Health. *J Endocrinol* (2014) 221:R13–29. doi: 10.1530/joe-13-0567
133. Jones AK, Brown LD, Rozance PJ, Serkova NJ, Hay WW, Friedman JE, et al. Differential Effects of Intrauterine Growth Restriction and a Hypersulinemic-Isoglycemic Clamp on Metabolic Pathways and Insulin Action in the Fetal Liver. *Am J Physiol Regul Integr Comp Physiol* (2019) 316:R427–40. doi: 10.1152/ajpregu.00359.2018

134. Thorn SR, Regnault TRH, Brown LD, Rozance PJ, Keng J, Roper M, et al. Intrauterine Growth Restriction Increases Fetal Hepatic Gluconeogenic Capacity and Reduces Messenger Ribonucleic Acid Translation Initiation and Nutrient Sensing in Fetal Liver and Skeletal Muscle. *Endocrinology* (2009) 150:3021–30. doi: 10.1210/en.2008-1789
135. Brown LD, Rozance PJ, Bruce JL, Friedman JE, Hay WW, Wesolowski SR. Limited Capacity for Glucose Oxidation in Fetal Sheep With Intrauterine Growth Restriction. *Am J Physiol Integr Comp Physiol* (2015) 309:R920–8. doi: 10.1152/ajpregu.00197.2015
136. Liu C, Lin G, Wang X, Wang T, Wu G, Li D, et al. Intrauterine Growth Restriction Alters the Hepatic Proteome in Fetal Pigs. *J Nutr Biochem* (2013) 24:954–9. doi: 10.1016/j.jnutbio.2012.06.016
137. Sparks JW, Hay WW, Meschia G, Battaglia FC. Partition of Maternal Nutrients to the Placenta and Fetus in the Sheep. *Eur J Obstet Gynecol Reprod Biol* (1983) 14:331–40. doi: 10.1016/0028-2243(83)90009-6
138. Thorn SR, Rozance PJ, Brown LD, Hay WW. The Intrauterine Growth Restriction Phenotype: Fetal Adaptations and Potential Implications for Later Life Insulin Resistance and Diabetes. *Semin Reprod Med* (2011) 29:225–36. doi: 10.1055/s-0031-1275516
139. Limesand SW, Rozance PJ, Smith D, Hay WW. Increased Insulin Sensitivity and Maintenance of Glucose Utilization Rates in Fetal Sheep With Placental Insufficiency and Intrauterine Growth Restriction. *Am J Physiol Metab* (2007) 293:E1716–25. doi: 10.1152/ajpendo.00459.2007
140. Limesand SW, Rozance PJ, Zerbe GO, Hutton JC, Hay WW. Attenuated Insulin Release and Storage in Fetal Sheep Pancreatic Islets With Intrauterine Growth Restriction. *Endocrinology* (2006) 147:1488–97. doi: 10.1210/en.2005-0900
141. Owens JA, Gatford KL, De Blasio MJ, Edwards LJ, McMillen IC, Fowden AL. Restriction of Placental Growth in Sheep Impairs Insulin Secretion But Not Sensitivity Before Birth. *J Physiol* (2007) 584:935–49. doi: 10.1113/jphysiol.2007.142141
142. Thorn SR, Rozance PJ, Friedman JE, Hay WW, Brown LD. Evidence for Increased Cori Cycle Activity in IUGR Fetus. *Pediatr Res* (2013) 74:481.
143. Farrag HM, Nawrath LM, Healey JE, Dorcus EJ, Rapoza RE, Oh W, et al. Persistent Glucose Production and Greater Peripheral Sensitivity to Insulin in the Neonate vs. The Adult. *Am J Physiol Endocrinol Metab* (1997) 272:E86–93. doi: 10.1152/ajpendo.1997.272.1.e86
144. Năstase L, Crețoiu D, Stoicescu SM. Skeletal Muscle Damage in Intrauterine Growth Restriction. In: J Xiao. (eds) *Muscle Atrophy. Advances in Experimental Medicine and Biology* vol 1088. Singapore: Springer. doi: 10.1007/978-981-13-1435-3\_5
145. Marconi AM, Battaglia FC, Meschia G, Sparks JW. A Comparison of Amino Acid Arteriovenous Differences Across the Liver and Placenta of the Fetal Lamb. *Am J Physiol Endocrinol Metab* (1989) 257:E909–15. doi: 10.1152/ajpendo.1989.257.6.e909
146. Teng C, Battaglia FC, Meschia G, Narkewicz MR, Wilkening RB. Fetal Hepatic and Umbilical Uptakes of Glucogenic Substrates During a Glucagon-Somatostatin Infusion. *Am J Physiol Endocrinol Metab* (2002) 282:E542–50. doi: 10.1152/ajpendo.00248.2001
147. Nagampalli RSK, Quesnăy JEN, Adamoski D, Islam Z, Birch J, Sebinelli HG, et al. Human Mitochondrial Pyruvate Carrier 2 as an Autonomous Membrane Transporter. *Sci Rep* (2018) 8:3510. doi: 10.1038/s41598-018-21740-z
148. Sharma A, Oonthonpan L, Sheldon RD, Rauckhorst AJ, Zhu Z, Tompkins SC, et al. Impaired Skeletal Muscle Mitochondrial Pyruvate Uptake Rewires Glucose Metabolism to Drive Whole-Body Leanness. *Elife* (2019) 8:1–28. doi: 10.7554/eLife.45873
149. Jansson T, Scholtbach V, Powell TL. Placental Transport of Leucine and Lysine is Reduced in Intrauterine Growth Restriction. *Pediatr Res* (1998) 44:532–7. doi: 10.1203/00006450-199810000-00011
150. Anderson AH, Fennessey PV, Meschia G, Wilkening RB, Battaglia FC. Placental Transport of Threonine and its Utilization in the Normal and Growth-Restricted Fetus. *Am J Physiol Endocrinol Metab* (1997) 272:E892–900. doi: 10.1152/ajpendo.1997.272.5.e892
151. Ross JC, Fennessey PV, Wilkening RB, Battaglia FC, Meschia G. Placental Transport and Fetal Utilization of Leucine in a Model of Fetal Growth Retardation. *Am J Physiol Endocrinol Metab* (1996) 270:E491–503. doi: 10.1152/ajpendo.1996.270.3.e491
152. Paolini CL, Marconi AM, Ronzoni S, Di Noio M, Fennessey PV, Pardi G, et al. Placental Transport of Leucine, Phenylalanine, Glycine, and Proline in Intrauterine Growth-Restricted Pregnancies. *J Clin Endocrinol Metab* (2001) 86:5427–32. doi: 10.1210/jcem.86.11.8036
153. Long B, Yin C, Fan Q, Yan G, Wang Z, Li X, et al. Global Liver Proteome Analysis Using Itraq Reveals AMPK-Mtor-Autophagy Signaling is Altered by Intrauterine Growth Restriction in Newborn Piglets. *J Proteome Res* (2016) 15:1262–73. doi: 10.1021/acs.jproteome.6b00001
154. De Boo HA, Harding JE. Protein Metabolism in Preterm Infants With Particular Reference to Intrauterine Growth Restriction. *Arch Dis Child Fetal Neonatal Ed* (2007) 92:F315–9. doi: 10.1136/adc.2006.099697
155. De Boo HA, Van Zijl PL, Lafeber HN, Harding JE. Urea Production and Arginine Metabolism are Reduced in the Growth Restricted Ovine Foetus. *Animal* (2007) 1:699–707. doi: 10.1017/S1751731107710273
156. HKA Visser ed. *Nutrition and Metabolism of the Fetus and Infant*. Dordrecht: Springer Netherlands (1979). doi: 10.1007/978-94-009-9318-1
157. Girard J, Pintado E, Ferre P. Fuel Metabolism in the Mammalian Fetus. *Ann Biol Anim Biochim Biophys* (1979) 19:181–97. doi: 10.1051/rmd:19790206
158. Char VC, Creasy RK. Acetate as a Metabolic Substrate in the Fetal Lamb. *Am J Physiol* (1976) 230:357–61. doi: 10.1152/ajplegacy.1976.230.2.357
159. Adam PAJ, Felig P. Carbohydrate, Fat, and Amino Acid Metabolism in the Pregnant Woman and Fetus. In: F Falkner and JM Tanner (eds) *Principles and Prenatal Growth* (1978) Boston, MA: Springer. doi: 10.1007/978-1-4684-0814-0\_18
160. Roux JF. Lipid Metabolism in the Fetal and Neonatal Rabbit. *Metabolism* (1966) 15:856–64. doi: 10.1016/0026-0495(66)90178-8
161. Roux JF, Yoshioka T. Lipid Metabolism in the Fetus During Development. *Clin Obstet Gynecol* (1970) 13:595–620. doi: 10.1097/00003081-197009000-00009
162. Zhu MJ, Ford SP, Means WJ, Hess BW, Nathanielsz PW, Du M. Maternal Nutrient Restriction Affects Properties of Skeletal Muscle in Offspring. *J Physiol* (2006) 575:241–50. doi: 10.1113/jphysiol.2006.112110

**Conflict of Interest:** The authors declare that the research was conducted in the absence of any commercial or financial relationships that could be construed as a potential conflict of interest.

Copyright © 2021 Pendleton, Wesolowski, Regnault, Lynch and Limesand. This is an open-access article distributed under the terms of the Creative Commons Attribution License (CC BY). The use, distribution or reproduction in other forums is permitted, provided the original author(s) and the copyright owner(s) are credited and that the original publication in this journal is cited, in accordance with accepted academic practice. No use, distribution or reproduction is permitted which does not comply with these terms.