

REVIEW

Open Access



# Role of platelets and platelet receptors in cancer metastasis

Martin Schlesinger

## Abstract

The interaction of tumor cells with platelets is a prerequisite for successful hematogenous metastatic dissemination. Upon tumor cell arrival in the blood, tumor cells immediately activate platelets to form a permissive microenvironment. Platelets protect tumor cells from shear forces and assault of NK cells, recruit myeloid cells by secretion of chemokines, and mediate an arrest of the tumor cell platelet embolus at the vascular wall. Subsequently, platelet-derived growth factors confer a mesenchymal-like phenotype to tumor cells and open the capillary endothelium to expedite extravasation in distant organs. Finally, platelet-secreted growth factors stimulate tumor cell proliferation to micrometastatic foci. This review provides a synopsis on the current literature on platelet-mediated effects in cancer metastasis and particularly focuses on platelet adhesion receptors and their role in metastasis. Immunoreceptor tyrosine-based activation motif (ITAM) and hemi ITAM (hemiITAM) comprising receptors, especially, glycoprotein VI (GPVI), FcγRIIa, and C-type lectin-like-2 receptor (CLEC-2) are turned in the spotlight since several new mechanisms and contributions to metastasis have been attributed to this family of platelet receptors in the last years.

**Keywords:** Platelets, Metastasis, GPVI, FcγRIIa, CLEC-2, ITAM, hemiITAM

## Background

Besides their crucial role in coagulation and maintaining hemostasis following mechanical injury of the vasculature, platelets contain a plethora of bioactive molecules in their granules and express different receptors on their surfaces that also contribute to inflammation, cancer progression, and metastasis. In the initial minutes, when tumor cells detach from the primary tumor and access the blood, platelets are the first host cells they encounter. The first descriptions of cancer-associated thrombophlebitis date back 1000 years BC and were later on rendered more precisely by Armand Trousseau in 1865 [1, 2]. Formation of tumor cell platelet aggregates were observed in mouse and rat experimental metastasis models; enhanced metastases formation to the lungs was accompanied by thrombocytopenia [3–6]. Subsequent to this early observations of heterotypic and protumorigenic aggregates of tumor cells and platelets, in the last decades, the knowledge on how tumor cells exploit platelets for survival, arrest, and finally extravasation

from blood vessels to distant organs has tremendously increased. Thus, various excellent reviews have been dedicated to the role of platelets in cancer metastasis in the last years, discussing the contribution of adhesion receptors like P-selectin, or integrin  $\alpha_{IIb}\beta_{III}$ , platelet-activating receptors such as  $P_2Y_{12}$  or protease-activated receptor-1 (PAR-1), or platelet-derived growth factors and chemokines in detail [7–10]. In contrast, the three ITAM (immunoreceptor tyrosine-based activation motif)-associated receptors on human platelets, namely CLEC-2, GPVI, and FcγRIIa, have mostly been investigated in course of hemostasis and thrombosis, but their involvement in cancer metastasis has been neglected widely. Thus, this review provides a summary of platelet protumorigenic effects and focuses in particular on recent findings concerning ITAM-affiliated receptors and their impact on tumor cell platelet interaction.

## Role of platelets in cancer metastasis

### Platelet activation

Tumor cells that enter the blood circulation have to cope with high shear rates and the immune surveillance, e.g., the assault of natural killer cells. Only a very small

Correspondence: [martin.schlesinger@uni-bonn.de](mailto:martin.schlesinger@uni-bonn.de)  
Pharmaceutical Institute, University of Bonn, Bonn, Germany



percentage of tumor cells in the circulation ends up in a metastatic foci, making this process very inefficient [11, 12]. Platelets protect circulating tumor cells (CTCs) by encasing tumor cells in a thrombus, protecting them from cytolysis by natural killer cells [13]. For a stable adhesion between platelets and tumor cells, tumor cells activate platelets by distinct mechanisms, which are also the reason for hypercoagulation and increased risks of thrombosis in cancer patients. Tumor cells release soluble mediators like ADP [13, 14], thromboxane A2 (TXA2) [15, 16], or high-mobility group box 1 (HMGB1), which ligates with toll-like receptor 4 (TLR4) to instigate a local platelet activation [17]. Recently, Ward et al. revealed that cancer cell-expressed adhesion GPCR CD97 induced platelet activation which leads to lysophosphatidic acid (LPA) release from platelets. LPA in turn enhances tumor cell invasiveness and vascular permeability to promote transendothelial migration [18]. Some cancer cells express tissue factor (TF) on their cell membranes, which activates the plasmatic coagulation cascade and finally generates thrombin which in turn induces platelet activation [19]. Besides the activation of the coagulation cascade and platelets, thrombin is of key importance for almost every step of the metastatic cascade. Thrombin favors tumor cell proliferation and tumor growth, e.g., by activation of PAR-1 and fibrinogen [20]. In tumor microenvironment, thrombin-stimulated fibroblasts and macrophages secrete monocyte chemotactic protein which fosters protumorigenic myeloid cell invasion [21]. Thrombin has also several effects on endothelial cells that support angiogenesis for example by potentiation of the mitogenic activity of VEGF on endothelial cells [22]. Additionally, thrombin inhibits apoptosis and induces proliferation and differentiation of vascular progenitor cells [23]. Thrombin-stimulated endothelial cells reveal a rounded morphology and loss of adherens junctions which facilitates tumor cell transendothelial migration [24].

Besides thrombin, several other mechanisms were elucidated which exert a proper tumor cell-induced platelet activation. Recently, Shao could reveal that carcinoma mucins initiate a reciprocal activation mechanism in neutrophils and platelets. Mucins bind to P-selectin on platelets and L-selectin on neutrophils bringing both cells in close proximity. A direct interaction of platelet P-selectin and PSGL-1 on neutrophils induces release of cathepsin G from neutrophils inducing platelet activation [25]. Additionally, some tumor patients suffering from various kinds of cancer are deficient in enzymes cleaving von Willebrand factor (vWf), which could finally lead to a platelet activation by highly polymeric forms of vWf in the circulation and enhanced number of metastases [26]. Already in 1981, tumor cell-derived microparticles with proagulant properties could be

detected *in vitro* and in ascitic fluids of tumor bearing guinea pigs [27]. Later on, TF was identified on tumor-derived vesicles as the reason for procoagulant activity [28]. Furthermore, tumor cell-derived matrix metalloproteinases (MMPs) can elicit platelet activation, and platelet-activating factor in turn can induce an increased MMP expression in melanoma cells [29, 30].

Thus, tumor cells possess various different options to induce coagulation and platelet activation in their close vicinity. Subsequent to platelet activation, tumor cells and platelets form aggregates using miscellaneous adhesion receptors. Chew and Wallace could demonstrate a fibrin deposition to the cloak of platelets and tumor cells 5 min after tail vein injection of tumor cells in Sprague-Dawley rats [31]. Fibrin deposition reached a maximum after 1 h and disappeared 9 h after tumor cell inoculation. Accompanied by platelet and fibrin formation around tumor cells in the early phase of tumor cell dissemination, single neutrophils and lymphocytes could also be detected in the growing aggregates.

#### **Escape the immune surveillance**

The heterogenous cloaks of platelets and tumor cells protect tumor cells from high shear forces in the blood circulation and from attack by leukocytes. First, Nieswandt proposed the idea that platelets impact NK cell-mediated lysis of tumor cells using thrombocytopenic mice [13]. Later on, this hypothesis was corroborated by Palumbo et al. utilizing mice deficient in either fibrinogen or G protein  $\alpha(q)$  expression, a protein essential for platelet activation. In both approaches, a strong reduction in tumor cell survival was detectable. Interestingly, in mice with a life-long genetic deficit in NK cells, reduction of tumor cell survival in the lungs was not detectable in a concomitant absence of fibrinogen [32–34]. These data indicated that platelets and fibrinogen shield tumor cells in the vasculature from clearance by NK cells. However, the exact mechanism induced by platelets to protect tumor cells from immunosurveillance was ambiguous. Salih and colleagues revealed that the cloak of platelets and tumor cells exhibit an active phenotype, secreting a plethora of platelet-derived factors like Interferon- $\gamma$  (IFN- $\gamma$ ) or transforming growth factor- $\beta$ 1 (TGF- $\beta$ 1) [35]. TGF- $\beta$ 1 induced a downregulation of C-type lectin-like NKG2D receptors, which caused a reduced antitumor activity in NK cells. Furthermore, Salih demonstrated that platelets confer MHC class I molecules to tumor cell membranes by direct contact formation that leads to alleviated NK cell reactivity and cytotoxicity towards tumor cells [36]. This mechanism of molecular mimicry adapting a pseudonormal phenotype allows tumor cells to downregulate MHC class I molecules to escape T cell immune surveillance. In the blood stream, the transfer of immunoregulatory proteins

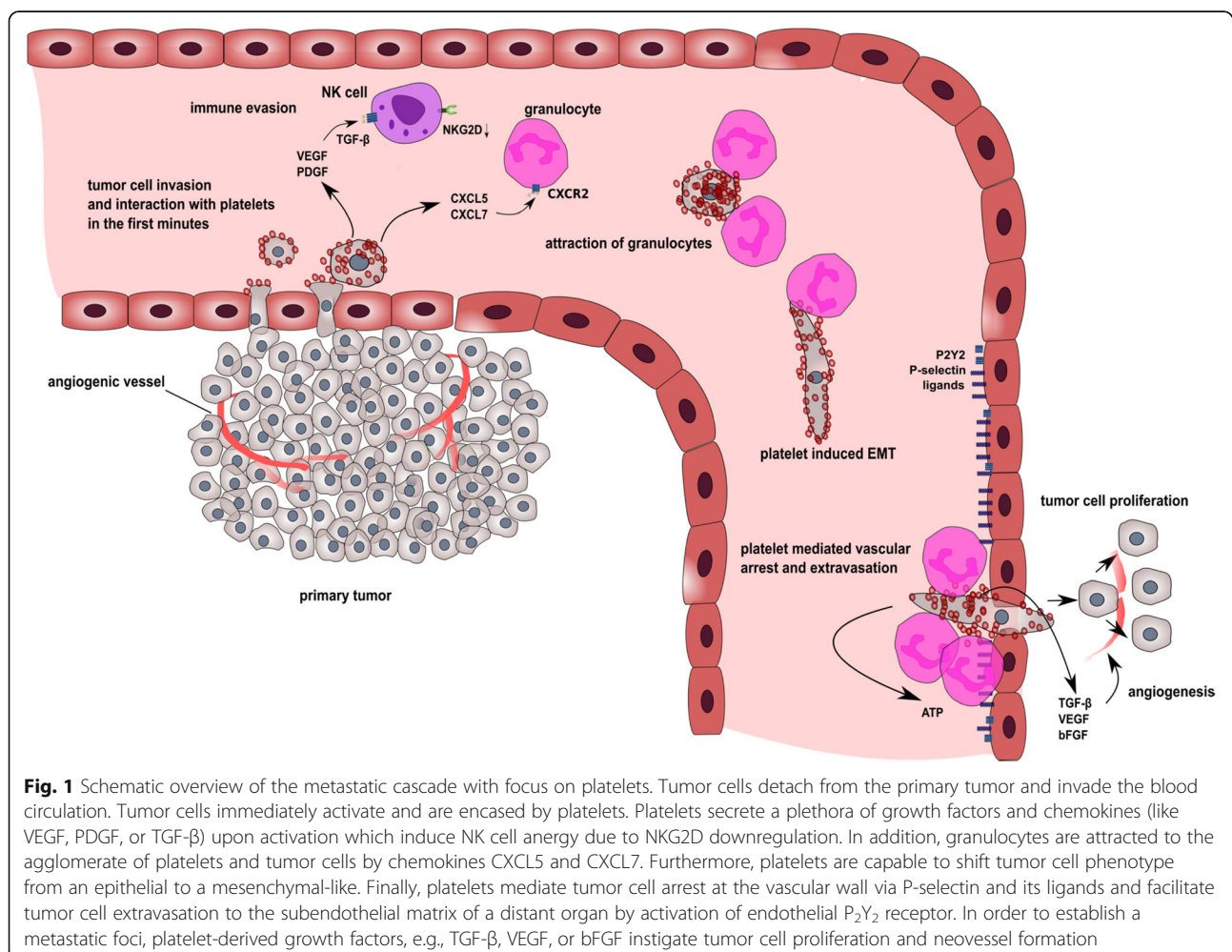
finally leads to a MHC class I-positive phenotype without induction of NK cell activity. Additionally, due to tumor cell-mediated platelet activation, TNF family member glucocorticoid-induced TNF-related ligand (GITRL) located in  $\alpha$ -granules is coexpressed with P-selectin on platelets surface. GITRL showed no effect on platelet activation or function, whereas NK cell cytotoxicity and IFN- $\gamma$  release is surprisingly reduced. Platelet-derived GITRL seems to activate GITR on NK cells and instigate a tumor cell phenotype with mitigated immunogenicity [37]. Blocking GITR on NK cells partially compensates reduced NK cell cytotoxicity induced by platelet covered tumor cells. Next to NK cells, platelets can also interfere with dendritic cells, neutrophils, macrophages, and lymphocytes and modulate their immunological function [38–41]. Nonetheless, the impact of platelets on adaptive immunity is ambiguous. Recently, Rachidi found that platelets are the major source of TGF- $\beta$  in the tumor microenvironment by expression of the TGF- $\beta$ -docking receptor glycoprotein A repetitions predominant (GARP). The function of GARP is to

activate latent TGF- $\beta$  in the close proximity of platelets. The GARP-TGF $\beta$  complex together with platelet-secreted lactate inhibited T cell immunity against both melanoma and colon cancer [42, 43]. These data substantiate the notion that platelets interfere with the innate as well as with the adaptive immune system to tackle cancer cells.

Platelets are also endowed with the ability to prevent anoikis (detachment-induced apoptosis) in different human ovarian cancer cell lines by activation of the YAP1 signaling pathway. RhoA controlled YAP-1 gene expression is also responsible for enhanced metastasis [44]. (For an overview of the metastatic cascade see Fig. 1).

#### Platelet mediated vascular tumor cell arrest

Beside protection from immune surveillance and anoikis, platelets and platelet adhesion receptors exhibit further beneficial effects for tumor cell adhesion and extravasation to distant organs. Platelet membranes are endowed with a multitude of adhesion molecules like six different integrins ( $\alpha_{IIb}\beta_{III}$ ,  $\alpha_2\beta_1$ ,  $\alpha_5\beta_1$ ,  $\alpha_6\beta_1$ ,  $\alpha_L\beta_2$ ,  $\alpha_v\beta_3$ ), GPIb-IX-V, GPVI, CLEC-2, and P-selectin [45]. Most



data dealing with the role of adhesion receptors in the metastatic cascade are available for integrin  $\alpha_{IIb}\beta_{III}$ , GPIb-IX-V, and P-selectin, respectively, their prometastatic activity obviously correlates either with their expression on platelet surfaces [46] or their roles as target molecules in thrombosis and coagulation [45, 47]. The selectin family of adhesion receptors consists of 3 C-type lectins, whereas P-selectin is primarily expressed in platelets as well as endothelial cells [48, 49]. Upon platelet activation, P-selectin from  $\alpha$ -granules is translocated to platelet surfaces and mediates platelet binding to leukocytes or endothelial cells, presenting glycan structures like sialylated and fucosylated oligosaccharides for example the tetrasaccharide sialyl Lewis<sup>x</sup> or its isomer sialyl Lewis<sup>a</sup>. These carbohydrates are terminally clustered on glycoproteins to enhance Ca<sup>2+</sup>-dependent P-selectin binding affinity since P-selectin affinity to isolated sialylated and fucosylated saccharides is quite low [50]. Inhibition of P-selectin blocked accumulation of leukocytes in a growing thrombus as well as fibrin deposition displaying P-selectins' crucial role in coagulation and leukocyte recruitment [51]. In different studies, a P-selectin blockade or deficiency led to a tremendous reduction in metastatic foci of colon cancer cells in the lungs of mice and a mitigated binding of platelets to tumor cells [52–54]. Binding of LS174T colon adenocarcinoma and THP-1 monocytoïd cells to human umbilical vein endothelial cells (HUVECs) under flow was doubled in the presence of platelets, obviously mediated by platelet expressed P-selectin [55].

Furthermore, a differentiation between endothelial and platelet-expressed P-selectin revealed that both, platelet as well as endothelial expressed P-selectin likewise contribute to tumor cell dissemination [56, 57]. Platelets increased number of metastatic nodules in the lungs whereas liver metastasis was surprisingly enhanced in the absence of platelets. These results clearly demonstrate that the mechanism of P-selectin mediated clot formation goes far beyond a simple adherence to the endothelium or getting stuck in small vessels. Becker could show that a ligation of B16F10 melanoma cells to P-selectin induces a p38 MAPK signaling in platelets subsequent to secretion of acid sphingomyelinase, which is pivotal for cancer cell trapping in the lungs [58]. Wang could expose a P-selectin mediated activation of  $\alpha_{IIb}\beta_{III}$  through intracellular talin 1 in platelets. The engagement of the P-selectin- $\alpha_{IIb}\beta_{III}$ -talin complex led to a deposition of platelets in tumors and finally tumor growth and angiogenesis [59]. P-selectin binding to ligands can also activate pro-survival kinases for instance in neuroblastoma cells that results in enhanced tumor growth in mice [60].

Furthermore, platelets which bind to colorectal cancer cells by means of P-selectin in the presence of

polymorphonuclear leukocytes were able to activate human microvascular endothelial cells, which in turn expressed inflammatory proteins, e.g., chemokine CCL5 (Rantes) most abundantly [61]. CCL5 recruited monocytes to the metastatic microenvironment that finally culminated in an augmented number of metastatic foci in the lungs of mice. These data exhibit that platelets and platelet-derived P-selectin seem to be crucially involved in cancer immunity. This is corroborated by findings that P-selectin binding to PSGL-1 on leukocytes induced a recruitment of neutrophils and monocytes to sites of extravasation in small vessels [62]. P-selectin initiates an upregulation of  $\beta_2$  integrin affinity in neutrophils. P-selectin-mediated binding of platelets to monocytes induced an adhesive monocyte phenotype with increased clustering and affinity of integrins  $\alpha_4\beta_1$  and  $\alpha_M\beta_2$  to endothelial adhesion molecules and elevated transendothelial migration [63]. Thus, a P-selectin blockade on platelets does obviously not solely comprise a single reduction of tumor cell platelet agglomerate formation; moreover, several protumorigenic and cancer immunological relevant mechanisms can be addressed as well.

Platelet integrins  $\alpha_{IIb}\beta_{III}$  and  $\alpha_2\beta_1$  are most relevant for platelet adhesion to proteins of the extracellular matrix and aggregation [45]. GPVI together with integrin  $\alpha_2\beta_1$  mediates firm adhesion of platelets to different collagen types [64]. Notwithstanding, GPVI seems to be mainly responsible for signaling and platelet activation rather than for adhesive roles to collagen, which are subsequently mediated by  $\alpha_2\beta_1$  [65, 66]. The contribution of platelet-derived  $\alpha_2\beta_1$  in the hematogenous metastatic cascade is currently vague, whereas the role of tumor cell-expressed  $\alpha_2\beta_1$  was investigated for prostate cancer cells [67, 68]. This is reasonable since the activity and surface antigenicity of  $\alpha_2\beta_1$  from healthy subjects were found to vary interindividually [69].

Integrin  $\alpha_{IIb}\beta_{III}$  is the central platelet receptor that crosslinks adjacent platelets into hemostatic aggregates after trauma or injury. Additionally, it is of crucial importance in the pathogenesis of arterial thrombotic disorders. In resting platelets,  $\alpha_{IIb}\beta_{III}$  is in an inactive conformation unable to bind to macromolecular ligands like fibronectin, fibrinogen, vWF, thrombospondin, or vitronectin [64, 70–73]. After platelet activation,  $\alpha_{IIb}\beta_{III}$  can switch to at least one of two different active ligand binding states, both differ in their affinity for fibrinogen [70]. In several different studies, the contribution of  $\alpha_{IIb}\beta_{III}$  to tumor cell platelet interaction and aggregation was demonstrated [74–76]. Melanoma cell induced platelet aggregation was prone to mAbs directed against  $\alpha_{IIb}\beta_{III}$  [77]. A  $\alpha_{IIb}\beta_{III}$ -induced platelet activation could also be unveiled for glioblastoma and neuroepithelioma cells in vitro [75]. Using platelets with different disorders

like Bernard-Soulier syndrome or Glanzmann's thrombasthenia, a  $\alpha_{IIb}\beta_{III}$ -dependent platelet aggregation by human osteosarcoma cells could be revealed in which  $\alpha_{IIb}\beta_{III}$  initiated a first aggregation which was sustained in a second phase by GPIb-IX-V [76]. Applying a small-molecule  $\alpha_{IIb}\beta_{III}$  antagonist administered either orally or intravenously before injection of Lewis lung carcinoma cells, a pronounced reduction of metastatic nodules could be observed in the lungs of mice. These data clearly confirmed the prometastatic role of  $\alpha_{IIb}\beta_{III}$  in vivo [78]. Later on, an integrin  $\alpha_{IIb}\beta_{III}$ -mediated release of proangiogenic factors (vascular endothelial growth factor (VEGF) or basic fibroblast growth factor (bFGF)) was demonstrated due to melanoma or breast cancer cell interaction [79, 80]. These results provided first evidence that  $\alpha_{IIb}\beta_{III}$  possesses additional roles in the metastatic spread beyond adhesion and bridging functions. Lonsdorf and colleagues recently revealed a direct binding between platelet  $\alpha_{IIb}\beta_{III}$  and melanoma cell-expressed  $\alpha_v\beta_{III}$  without assistance of fibrinogen or other molecules. Juxtacrine signaling between  $\alpha_{IIb}\beta_{III}$  and  $\alpha_v\beta_{III}$ -enhanced lung tumor burden of mice injected with B16-luc melanoma cells [81]. Hence, integrin  $\alpha_{IIb}\beta_{III}$  is for several reasons an attractive target in hematogenous cancer cell dissemination. First, different drugs, which efficiently inhibit integrin  $\alpha_{IIb}\beta_{III}$ , have been approved for reduction or prevention of thrombotic cardiovascular events (e.g., tirofiban, eptifibatid and abciximab). Second, integrin  $\alpha_{IIb}\beta_{III}$  is capable of mediating bidirectional signaling. Binding of integrin  $\alpha_{IIb}\beta_{III}$  to tumor cells can finally culminate in platelet activation; vice versa, platelet activation by, e.g., ADP, TXA2, or thrombin, can transfer  $\alpha_{IIb}\beta_{III}$  to an active binding state. These inside-out signaling confers the ability to bind several ligands for example melanoma cell expressed  $\alpha_v\beta_{III}$  which can induce protumorigenic and proangiogenic signals [82–84].

Recently, Mangin et al. elucidated an interaction between platelet integrin  $\alpha_6\beta_1$  and tumor cell-derived ADAM9 [85]. ADAM9 is a member of the disintegrin and metalloproteinase (ADAM) family of proteins and consists of a prodomain, a metalloproteinase domain, a disintegrin-like domain, and a cytoplasmic tail and is crucially involved in several cellular processes like proteolytic shedding of membrane-associated proteins [85, 86]. Binding between  $\alpha_6\beta_1$  and ADAM9 initiated platelet activation, P-selectin exposure to the platelet membrane, and finally elevated mammary carcinoma cell transmigration. These data clearly identify integrin  $\alpha_6\beta_1$  as a new potential target on platelets involved in cancer metastasis since several different tumor entities express ADAM9.

GPIb-IX-V is exclusively expressed on platelets and megakaryocytes and belongs to the leucine-rich repeats (LLRs) family of proteins. After vascular injury, GPIb-IX-V mediates the first tethering of platelets to subendothelial vWf even under conditions of high shear

rates like in arteriols or small arteries [87]. It consists of four different subunits, GPIb $\alpha$  is disulphide connected to GPIb $\beta$  and associated with GPIX and weakly linked to GPV [87]. GPIb-IX-V is the second most abundant receptor on platelet membranes with approximately 25,000 copies of GPIb-IX complexes and 12,000 molecules of GPV per platelet [88, 89]. Next to vWf, thrombin [90], P-selectin [91], leukocyte integrin  $\alpha_L\beta_2$  [92], high molecular weight kininogen, and clotting factors XI and XII have been identified as GPIb-IX-V ligands [93–95].

Upon vWf binding to GPIb-IX-V, activation of phospholipase C, phospholipase A2, and phosphatidylinositol 3-kinases (PI3K) among other kinases is initiated either in cooperation with or independent from Fc receptor Fc $\gamma$ RIIA or FcR $\gamma$  chain [96]. Subsequently, activated protein kinases or second messengers participate in downstream activation of integrin  $\alpha_{IIb}\beta_{III}$ . In first in vitro experiments, a preincubation of platelets with antibodies to GPIb revealed a mitigated aggregation due to glioblastoma, neuroepithelioma, or breast cancer cell addition [74, 75, 97]. Jain et al. exhibited a prometastatic role for GPIb-IX-V in vivo applying B16F10.1 murine melanoma cells either to wild type C57BL/6J control mice, mice with GPIb-IX-V deficiency mimicking the Bernard-Soulier syndrome, mice with a few residues of GPIb fused to IL-4 receptor (with mild macrothrombocytopenia), or mice lacking six terminal residues of the GPIb $\alpha$  subunit [98]. A 15-fold reduction in number of metastatic foci could be detected in GPIb-IX-V-deficient mice and mice with fused IL-4 receptor to GPIb residues. In contrast, mice with the six residue truncation of GPIb $\alpha$  revealed a moderate but not significant reduction in number of lung metastases compared to wild type mice. These results clearly demonstrate a contribution of GPIb-IX-V to melanoma lung metastasis whereby the GPIb-IX-V mediated signaling seems to be dispensable [98]. Later on, Erpenbeck and colleagues blocked GPIb $\alpha$  with antibody Fab fragments 2 h prior B16F10 cell injection, simultaneously or 2 h after tumor cell inoculation and surprisingly observed a significant increase in number of metastatic nodules in the lungs compared to mice treated with control mabs either simultaneously or previously to tumor cell application [99]. In P-selectin knockout mice, GPIb $\alpha$  had no elevating effect on metastasis. Thus, the role of GPIb-IX-V in the early phase of melanoma metastasis is ambiguous and warrants further investigations maybe in GPIb $\alpha$  knockout mice with spontaneous tumor development.

#### **Recruitment of neutrophils/monocytes and tumor cell extravasation**

Several clinical and experimental investigations have exhibited and elucidated the role of myeloid cells in tumor onset, progression, angiogenesis, and finally local

immune suppression [100, 101]. Obviously, also in the early phase of hematogenous metastatic dissemination, the presence and recruitment of myeloid cells seems to initiate and predetermine the metastatic niche formation [102–104].

Agglomerates of platelets and MC38 colon cancer cells have the ability to accumulate CD11b<sup>+</sup> MMP9<sup>+</sup> Ly6G<sup>+</sup> granulocytes via secretion of chemokines CXCL5 and CXCL7 in their vicinity [105]. Both CXCL5 and CXCL7 are released due to platelet activation and attract granulocytes by activation of the granulocyte receptor CXCR2. CXCL5 and CXCL7 release is either initiated by direct contact between platelets and tumor cells or by activation of the coagulation cascade [106]. The prometastatic interplay between platelets, tumor and myeloid cells is corroborated by earlier publications [107]. The presence of leukocytes in tumor cell platelet microthrombi apparently facilitates tumor cell extravasation, supports tumor growth and proliferation, and maybe also participates in local T cell mediated immune suppression [108–110]. It is supposed that platelets have characteristics of immune cells since they share a lot of features with leukocytes and are also involved in a lot of inflammatory diseases like atherosclerosis [111]. Since their role and mechanisms of leukocyte recruitment in inflammatory processes are quite well investigated, platelets' contribution to metastasis by recruitment of granulocytes to tumor cells and modulation of local immune surveillance as aforementioned is barely explored and will likely offer novel therapeutic options.

#### Contribution of platelets to tumor growth and angiogenesis

Upon platelet mediated arrest of the tumor cell embolus at the vascular wall, platelet dense granules secrete ATP, which in turn binds to and activates endothelial P<sub>2</sub>Y<sub>2</sub> receptors. Subsequently, the endothelial barrier is opened and tumor cell transmigration and extravasation is facilitated to form metastatic foci [112]. Next to ATP, the platelet secretome consists of a plethora of more than 300 bioactive molecules which is sequestered into the local microenvironment after activation [113]. Some of these molecules are endowed with the capability to boost tumor cell proliferation and tumor growth. In an orthotopic pancreatic tumor mouse model, daily administration of P<sub>2</sub>Y<sub>12</sub> inhibitor (Clopidogrel) decreased tumor growth rate and number of metastatic foci significantly [114]. Blockade of integrin  $\alpha_{IIb}\beta_{III}$  resulted in reduced migration, invasion and proliferation of endothelial cells, and also the mean tumor volume of subcutaneous injected melanoma cells into nude mice and rats was profoundly mitigated [115].

Ovarian cancer cells injected into the peritoneal cavity of female nude mice exhibited increased tumor weight

due to platelet transfusion and reduced cleaved caspase-3 as marker for apoptosis. In turn, platelet transfusion to tumor bearing mice could rescue the anti-tumor effect of docetaxel administration [116]. In vitro, coculturing of different ovarian cancer cells with platelets, either direct or indirect through a membrane, decreased apoptosis after docetaxel addition [116]. Hence, platelets secreted biologically active molecules exert proliferative and anti-apoptotic signals in various tumor models.

The role of platelets in angiogenesis has long been recognized in several in vitro and in vivo studies applying diverse angiogenic assays [117]. Several molecules, stored in platelets'  $\alpha$ -granules exhibit proangiogenic properties like VEGF [118], platelet-derived growth factor (PDGF) [119], bFGF [120], or epidermal growth factor (EGF) [121] but also molecules exhibiting antiangiogenic effects, e.g., endostatin [122], angiostatin [123], PF4 [124], or thrombospondin [125] among others are located in platelets. Serum VEGF levels of patients suffering from diverse cancers are often elevated which correlates with advanced disease and poor prognosis [126, 127]. Increased VEGF concentrations could potentially contribute to tumor vessel formation, additionally endothelial cells in tumor tissues have the ability to capture platelets by augmented TF expression. Thus, TF finally generates thrombin and activates platelets via PAR-1, which culminates in local platelet settling and growth factor release [128]. Furthermore, Janowska-Wieczorek described PMP which stimulated lung cancer cell to express increased levels of VEGF, hepatocyte growth factor, and IL-8 mRNA and thus may contribute to neovessel formation [129]. Brill et al. could reveal the relevance of PMP for angiogenesis in vivo by transplantation of PMP containing agarose beads subcutaneously into mice [130]. In addition to soluble factor or PMP secretion, upon activation, platelets express CD154, also known as CD40 ligand, which is also capable to expedite angiogenesis [131]. CD40-deficient mice exhibit an impaired tumor growth and an atrophied tumor vasculature in the mammary glands. Similar results were obtained by application of Clopidogrel to mice, which provided evidence, that platelet expressed CD40L and subsequently a direct interaction between platelets and tumor tissue account for neovascularization [132]. As aforementioned, platelets contain pro- and antiangiogenic factors, which are stored in different  $\alpha$ -granules and which are released by different stimuli. In the context of tumor cell induced platelet activation and formation of a permissive metastatic microenvironment, the role of different activation pathways are incompletely elucidated. Stimulation of PAR-1, GPVI, or P<sub>2</sub>Y<sub>12</sub> induced a VEGF release whereas PAR-4 activation or TXA2 instigated an increased endostatin release from

$\alpha$ -granules [117, 133–135]. Jonnalagadda and colleagues conducted a more systemic approach and quantified 28  $\alpha$ -granules proteins upon platelet activation with different stimuli and detected a slower release rate and fewer proteins for PAR-4 activation [136]. Preincubation of platelets with heparin or the selective estrogen receptor modulator tamoxifen shifted the release characteristics from a pro- to an antiangiogenic phenotype with attenuated VEGF release subsequent to MCF7 breast cancer cell interaction [137, 138]. These findings are in line with recent data from Peters who distinguished different platelet granule subpopulations by VAMP (vesicle-associated membrane protein) isoform expression [139].

Due to the fact that platelets contain different MicroRNAs, which are released in PMP upon platelet activation, it is tempting to speculate that MicroRNAs contribute to neovascularization in growing tumors as well. PMP from patients with myocardial infarction for instance mediated the transfer of MicroRNA to endothelial cells [140]. Thus, PMP-derived MicroRNAs are capable to regulate gene expression in endothelial cells and could potentially impact neovascularization.

Angiogenesis is not limited to local expansion of vessels under the impact of growth factors. Additionally, the recruitment of bone marrow-derived progenitor cells sustains the formation of neovessels. Feng and colleagues could illustrate that platelet VAMP-8 containing  $\alpha$ -granules mobilize and recruit bone marrow-derived cells to sites of hypoxic stress and tumor tissue. Finally, bone marrow-derived cells contribute to formation of new vessels in the tumor tissue [141].

Platelets facilitate angiogenesis in many different ways but the precise mechanisms of platelet granule secretion of different proangiogenic and antiangiogenic factors are only partially elucidated. A deeper insight in platelet signaling pathways, involved receptors, and granule organization will offer new therapeutic opportunities for manipulation in platelet mediated support of angiogenesis.

### **Involvement of platelet ITAM and hemi ITAM receptors in cancer metastasis**

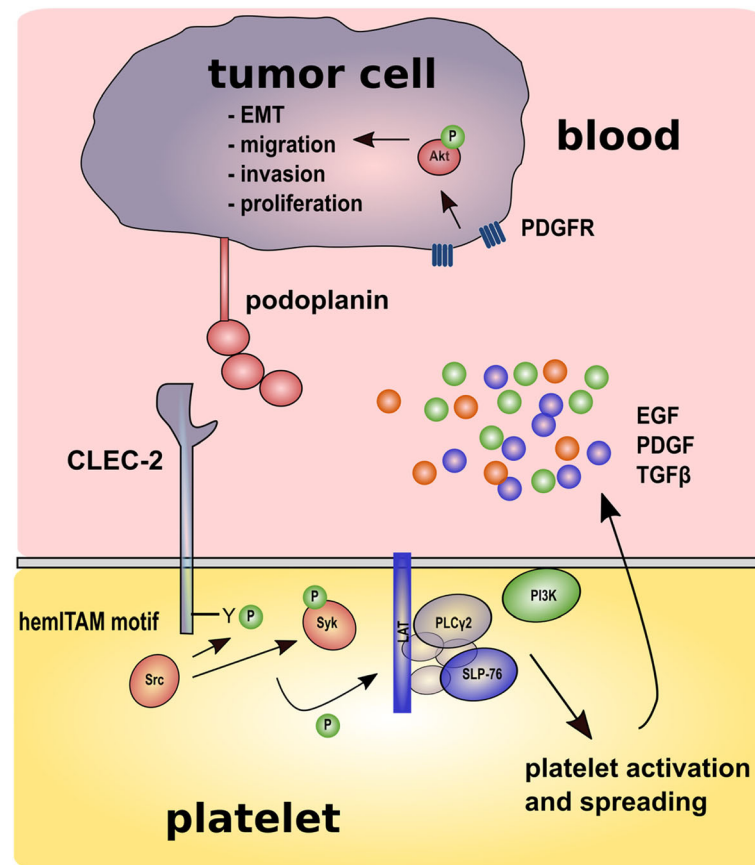
#### **CLEC-2 and the interaction with podoplanin**

CLEC-2 was initially identified as transcript in monocytes, dendritic cells, NK, and endothelial cells [142, 143]. Later on, CLEC-2 expression was perceived on platelets as the ligand for the potent platelet activating snake venom protein rhodocytin [144]. CLEC-2 is a 32 kDa type II transmembrane glycoprotein with an extracellular C-type lectin-like domain. Intracellularly, CLEC-2 contains a hemi ITAM (hemiITAM) YxxL motif in its cytoplasmic tail, which is similar to ITAM motifs comprising a YxxLx(6–12)YxxL sequence [145, 146]. Upon CLEC-2 ligand binding or antibody-mediated

dimerisation, Src phosphorylates hemiITAM and SH2 domain-containing tyrosine kinase Syk which in turn conducts additional hemiITAM motif phosphorylation and autophosphorylation [147–149].

Signaling downstream from Syk is nearly identical to that of ITAM motif containing receptors. Syk phosphorylates and activates linker for activation of T cells (LAT) and SH2 domain-containing leukocyte-specific protein of 76 kDa (SLP76) to form a signaling complex culminating in activation of PI3K and phospholipase C $\gamma$ 2 and finally platelet activation and spreading (Fig. 2). Watanabe and colleagues identified a membrane protein in highly metastatic NL-17 mouse colon carcinoma cells, which induced a strong platelet aggregation in the absence of plasma components. Antibody-mediated inhibition of this proaggregatory protein on NF-17 cells reduced pulmonary metastasis in vivo [150, 151]. This protein, designated as Aggrus, was later assigned to be identical with the lymphatic endothelial marker podoplanin [152, 153]. In 2007, podoplanin was identified as CLEC-2 ligand responsible for pronounced platelet aggregation and a podoplanin recognition domain in CLEC-2 was elucidated [154–156]. Podoplanin contains three platelet aggregation-stimulating domains in the extracellular section, O-glycosylated on threonine residues, which is crucially for the aggregating function [157]. In healthy human tissues, podoplanin is expressed in lymphatic endothelial cells, podocytes, osteocytes, keratinocytes, and myofibroblasts among many other cell entities [158]. Mice deficient in podoplanin reveal defects in lymphatic vessel formation and die after birth due to respiratory failure [159].

Also in different types of cancers, for instance in squamous cell carcinoma, lung and skin cancer, mesotheliomas, and cancer-associated fibroblasts (reviewed in [160, 161]), an upregulated expression of podoplanin was detected. Podoplanin induced an epithelial to mesenchymal transition (EMT) in MDCK cells, increased cell migration, and was associated with tumor invasion [162]. Meanwhile, the tumor cell-induced platelet aggregating effect of the podoplanin CLEC-2 interplay was revealed in several animal models and different antibodies targeting different epitopes were generated [163, 164]. The number of metastatic nodules in the lungs of podoplanin transfected CHO or HT1080 fibrosarcoma cells was reduced by antibody-mediated podoplanin blockade [164]. Kunita created CHO cells expressing podoplanin and could detect an arrest in the lung microvasculature 30 min after injection in mice. Additionally, number of metastatic nodules was increased by mice injected with podoplanin-expressing cells compared to wild type cells. The size of the primary tumor or metastases was not affected by podoplanin presence. Applying podoplanin point mutants, unable to bind CLEC-2, reduced platelet



**Fig. 2** Contribution of CLEC-2 to platelet tumor cell cross-talk. Tumor cells expressing podoplanin interact with CLEC-2 localized on platelets. Upon podoplanin ligation, hemITAM motif and Syk are phosphorylated by Src. Activated Syk in turn phosphorylates hemITAM, Src and a signaling complex consisting of LAT, SLP-76 and PLCy2. Finally, PI3K activation leads to platelet activation and secretion of growth factors, e.g., EGF, PDGF, and TGF- $\beta$ . PDGF induces Akt phosphorylation ensued by osteosarcoma cell proliferation. TGF- $\beta$  conducts a shift from an epithelial to a mesenchymal phenotype accompanied by increased tumor invasiveness and proliferation

aggregation and finally metastasis formation [165]. Takagi et al., in turn, could also detect an effect of anti-podoplanin antibodies on primary tumor growth of lung squamous cell carcinoma PC-10 cells accompanied by strong reduction of metastatic foci in the lungs [166]. For osteosarcoma cells, a podoplanin-mediated platelet activation led to a PDGF receptor (PDGFR) signaling ensued by Akt phosphorylation which fostered osteosarcoma cell proliferation [167]. Recently, Takemoto revealed podoplanin-induced platelet secretion by bladder squamous cell carcinoma cells. Aggregated platelets released TGF- $\beta$ , which in turn induced an EMT in carcinoma cells and enhanced invasiveness and metastatic spread. A TGF- $\beta$  blockade attenuated tumor extravasation and pulmonary metastasis [168]. These data are in accordance with Labelle and colleagues who indicated a mesenchymal-like phenotype for breast cancer cells previously treated with platelets [169]. Nonetheless, the platelet-induced effects on invasion and metastasis require TGF- $\beta$  and an additional direct juxtacrine

interaction between platelets and breast cancer cells. Both signals obviously synergize to confer a mesenchymal and stem cell-like phenotype to breast cancer cells [169]. Studies, dealing with a targeted inhibition of CLEC-2 to hamper podoplanin-mediated platelet activation in hematogenous dissemination are hardly available. Weng et al. recently reported on a small-molecule inhibitor of CLEC-2, which inhibited podoplanin-mediated platelet activation and increased survival time of mice in combination with cisplatin treatment [170]. Bleeding risk of mice, in turn, was not affected by application of this novel CLEC-2 inhibitor. These results were corroborated by Shirai and colleagues by depleting CLEC-2 with antibodies from platelet membranes [171]. Mice injected with B16F10 melanoma cells and deficient in CLEC-2 revealed a significantly prolonged overall survival which may be due to reduced thrombus formation in the lungs. Hence, CLEC-2 is an attractive target to circumvent CLEC-2 podoplanin-mediated platelet activation and aforementioned protumorigenic effects. Nonetheless,



other studies report of an antibody-mediated ligation of CLEC-2, which was found to induce CLEC-2 immunodepletion accompanied by a severe transient thrombocytopenia [172]. Recently, Lorenz et al. revealed a CLEC-2 internalization from platelet membranes by application of anti-CLEC-2 antibody. This process depends on Src activity, which is downstream associated with hemITAM phosphorylation, but is surprisingly independent from Syk activation. A blockade of Src activity prevented CLEC-2 internalization. In wild type mice, platelet activation was observed followed by platelet clearance from the circulation. In contrast, utilizing Syk-deficient mice, an antibody-mediated CLEC-2 internalization could be detected whereas a platelet activation, CLEC-2 clearance, and thrombocytopenia were finally prevented [173, 174]. These results offer the intriguing opportunity for a combination therapy of CLEC-2 antibody internalization and Syk inhibitor mediated perpetuation of CLEC-2 denuded platelets in the circulation.

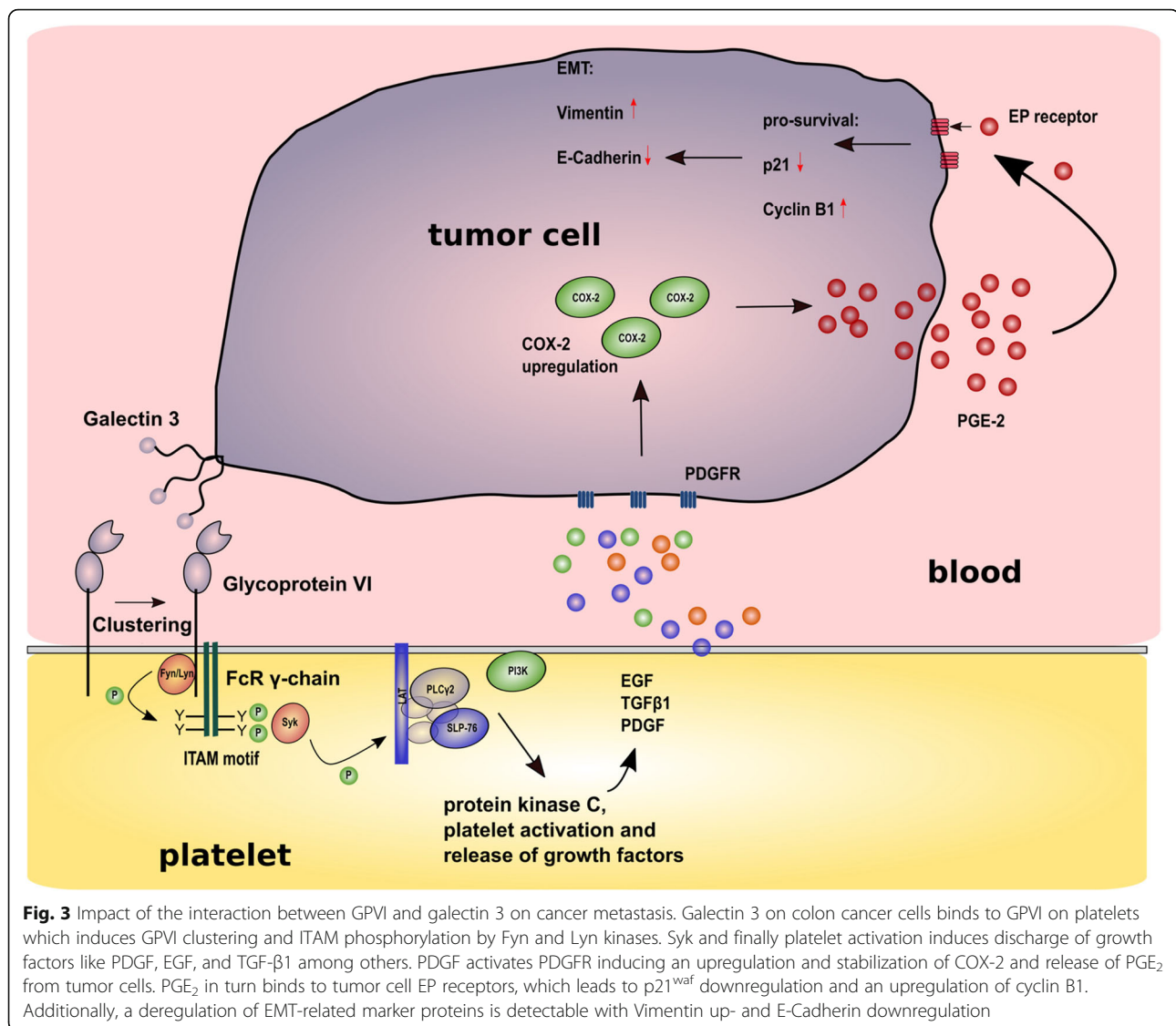
Thus, the CLEC-2 podoplanin axis is an interesting target in course of hematogenous metastasis especially for those patients with podoplanin-positive tumors. However, more studies and data are eligible to elucidate the physiological implications of a long-term podoplanin or CLEC-2 inhibition, respectively.

#### **Contribution of GPVI and FcγRIIa to platelet activation, EMT, and metastasis**

GPVI is exclusively expressed on platelets and megakaryocytes and was initially identified in a patient with platelets deficient in collagen induced aggregation and adhesion [175, 176]. GPVI is a transmembrane protein with an extracellular domain consisting of two immunoglobulin C2-like domains, orientated at 90°, a stalk, a transmembrane domain, and a cytoplasmic tail [177]. In areas of vascular injury and subendothelial matrix exposure, GPVI in conjunction with integrin  $\alpha_2\beta_1$ , is the key receptor for collagen type I and responsible for stable platelet adhesion after a transient interaction of GPIb-IX-V with vWf at high shear rates [65, 66, 177]. A density of approximately 4000 copies of GPVI per platelet was reported, partially organized in a mono- or dimeric form in tetraspanin microdomains regulating GPVI lateral diffusion [178–180]. Upon binding of GPVI dimers to collagen, a clustering of GPVI was described accompanied by increased avidity towards collagen and enhanced proximity of GPVI associated signaling molecules [181, 182]. GPVI cytoplasmic tail is associated through a salt bridge with the Fc receptor  $\gamma$  chain (FcR $\gamma$ ) and upon ligand mediated GPVI crosslinking and clustering, ITAM motif in FcR $\gamma$  chains are unmasked and phosphorylated by Src kinases Lyn and Fyn (Fig. 3). Phosphorylated ITAM in turn recruits and activates Syk,

which assembles downstream a signaling complex composed of LAT and SLP76. This complex finally leads to platelet activation and spreading [183, 184].

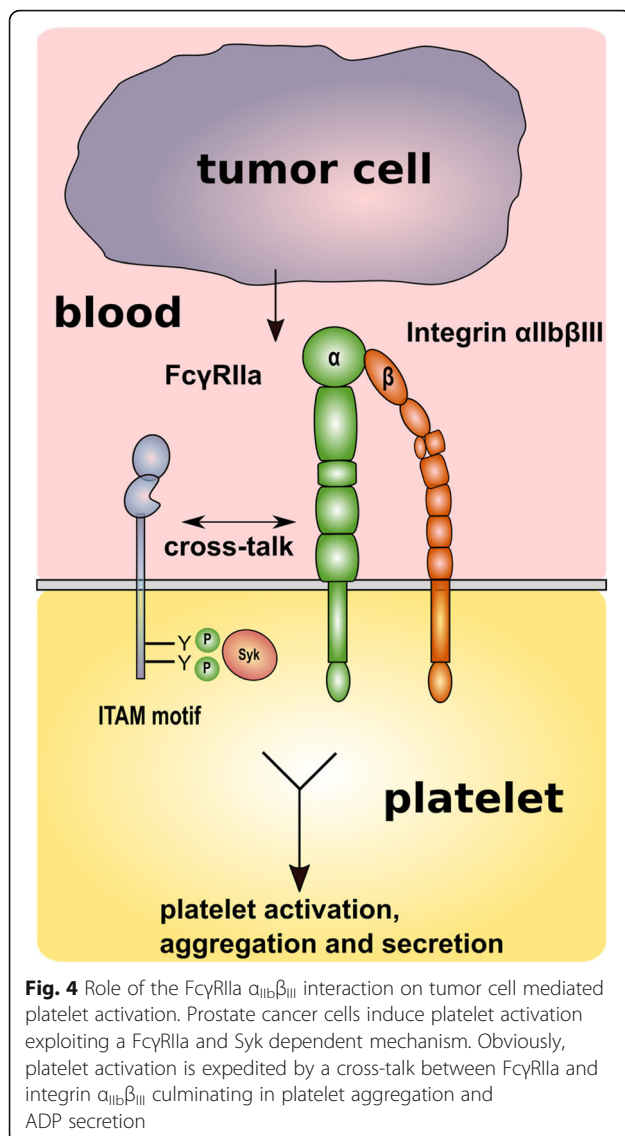
The role of this ITAM containing receptor in the interaction of platelets with tumor cells is hardly investigated and just a few studies are currently available shedding light on this issue. Jain and colleagues generated C57BL/6J mice deficient in GPVI with prolonged bleeding time and reduced thrombus formation [185, 186]. Induction of primary tumors in the dorsal flank of these mice revealed no differences between wild type and GPVI-deficient mice in tumor size and number of tumor microvessels. In experimental metastasis approaches, in contrast, number of metastatic foci in the lungs was significantly reduced for B16F10 melanoma as well as for D121 mouse Lewis lung carcinoma cells, respectively [187]. These *in vivo* experiments figured out the contribution of GPVI to the metastatic spread of different tumor cell lines whereas the exact mechanism by which GPVI supports metastasis remained ambiguous. Later on, Dovizio explored the mode of action by which platelet GPVI fosters protumorigenic properties of human colon cancer in an *in vitro* approach. They could unravel an interaction between GPVI on platelets and colon cancer cell expressed galectin 3, which induced release of different growth factors from platelet granules like EGF, TGF- $\beta$ 1, and most abundant PDGF (Fig. 3) [188]. Binding between GPVI and galectin 3 together with PDGF initiated a cyclooxygenase-2 (COX-2) upregulation and stabilization in colon cancer cells and finally a release of increased PGE<sub>2</sub> levels from tumor cells with a maximum after 20 h of platelet tumor cell interaction. Blocking galectin 3 reduced COX-2 induction in colon cancer cells significantly. Discharge of PGE<sub>2</sub>, in turn, triggered via EP receptors in an autocrine fashion a downregulation of apoptosis and proliferation associated protein p21<sup>waf</sup> and an upregulation of cyclin B1. Finally, epithelial and mesenchymal marker proteins in colon cancer cells were quantified and an induction of ZEB1, Twist1, and vimentin was detectable, whereas E-cadherin was downregulated. This effect was sensitive to a selective COX-2 inhibitor treatment, illustrating that GPVI induced COX-2 expression is ultimately responsible for colon cancer cell transition from an epithelial to a mesenchymal phenotype adopting cancer stem-like properties [189–191]. Thus, next to collagen [176, 177, 192], fibronectin [193], fibrin [194], and laminin [195], galectin 3 seems to be an additional ligand for GPVI relevant for platelet activation and vice versa for an increase in tumor cell malignancy. COX-2 expression in cancer cells seems to be a general driver of cancer progression and especially lymphangiogenesis. In one study, a celecoxib-mediated inhibition of COX-2 reduced podoplanin expression in breast cancer tumors [196].



Kubo and colleagues detected a COX-2 and EP3 receptor-dependent lymphangiogenesis with podoplanin as marker for lymphatic vessels in model of Lewis Lung cells [197]. This is in line with Hosono et al. who detected COX-2 dependent lymphangiogenesis in a Matrigel assay with fibroblast growth factor-2. Podoplanin was utilized as marker for lymphatic endothelial cells [198]. Shen et al. could detect a galectin 3 downregulation in COX-2 over-expressing mice which were finally refractory for tumor-promoting agents [199]. Thus, COX-2, podoplanin and galectin 3 are obviously intertwined in their support to tumor growth in different fashions and highlight COX-2 as valuable target in lymphangiogenesis.

Besides GPVI, human platelets express the ITAM receptor FcγRIIa, a low-affinity receptor for immune complexes [200]. Mouse platelets on the contrary do not express FcγRIIa [201–203].

The role of FcγRIIa is well investigated in heparin-induced thrombocytopenia as well as platelet activation by IgG-opsonized bacteria. Furthermore, an IgG-independent FcγRIIa-mediated cooperation between GPVI, GPIb-IX-V, and α<sub>IIb</sub>β<sub>III</sub> for platelet activation and spreading has been suggested. Studies dealing with the participation of FcγRIIa in tumor metastasis are barely available [200]. Mitrugno et al. could recently deduce that FcγRIIa dependent signaling is responsible for PC3M prostate cancer cell mediated platelet ADP secretion ensued by platelet aggregation (Fig. 4) [204]. Inhibition of FcγRIIa downstream signaling molecules like tyrosine kinase Syk, phospholipase Cγ2, or PKC resulted in alleviated platelet secretion and aggregation due to prostate cancer cell contact. The authors propose a collaborative FcγRIIa integrin α<sub>IIb</sub>β<sub>III</sub> cross-talk as mechanism for FcγRIIa activation and finally ADP secretion,



since experiments were conducted *in vitro* with washed prostate cancer cells and washed platelets, where no exogenous antibodies are present for a potential activation of Fc $\gamma$ RIIa. On the contrary, under *in vivo* conditions, a direct activation of platelet Fc $\gamma$ RIIa via Fc portions of anti-tumor antibodies is conceivable [205]. In further studies, it is mandatory to include several tumor cells from different entities to elucidate their mechanisms of platelet secretion and aggregation.

### Conclusion

Platelets contribute to cancer progression, metastasis and angiogenesis in multiple different ways.

The role of ITAM or hemITAM comprising receptors in platelet-assisted metastasis became more evident since the discovery of podoplanin as CLEC-2 ligand and Galectin-3 as newly identified ligand for GPVI,

respectively. Hence, the understanding of these receptors in metastasis will accelerate in the future and maybe reveal as valuable new therapeutic targets for interference in hematogenous metastasis as well as in prevention of thrombosis.

### Acknowledgements

The author thanks Gerd Bendas for critical reading and discussion of the manuscript.

### Availability of data and materials

The material supporting the conclusion of this review has been included within the article.

### Authors' contributions

The author read and approved the final manuscript.

### Ethics approval and consent to participate

Not applicable

### Consent for publication

Not applicable

### Competing interests

The author declares that he has no competing interests.

### Publisher's Note

Springer Nature remains neutral with regard to jurisdictional claims in published maps and institutional affiliations.

Received: 24 July 2018 Accepted: 25 September 2018

Published online: 11 October 2018

### References

- Menter DG, Tucker SC, Kopetz S, Sood AK, Crissman JD, Honn KV. Platelets and cancer: a casual or causal relationship: revisited. *Cancer Metastasis Rev.* 2014;33:231–69.
- Trousseau. Phlegmasia alba dolens. *Clin Med L'Hotel-Dieu Paris*. 2nd ed. Paris: JB Bailliere & Fils; 1865. p. 654–712.
- Gasic GJ, Gasic TB, Galanti N, Johnson T, Murphy S. Platelet-tumor-cell interactions in mice. The role of platelets in the spread of malignant disease. *Int J Cancer.* 1973;11:704–18.
- Hilgard P. The role of blood platelets in experimental metastases. *Br J Cancer.* 1973;28:429–35.
- Hilgard P, Heller H, Schmidt CG. The influence of platelet aggregation inhibitors on metastasis formation in mice (3LL). *Z Krebsforsch Klin Onkol Cancer Res Clin Oncol.* 1976;86:243–50.
- Karpatkin S, Pearlstein E. Role of platelets in tumor cell metastases. *Ann Intern Med.* 1981;95:636–41.
- Gay LJ, Felding-Habermann B. Contribution of platelets to tumour metastasis. *Nat Rev Cancer.* 2011;11:123–34.
- Contursi A, Sacco A, Grande R, Dovizio M, Patrignani P. Platelets as crucial partners for tumor metastasis: from mechanistic aspects to pharmacological targeting. *Cell Mol Life Sci.* 2017;74:3491–507.
- Li N. Platelets in cancer metastasis: to help the "villain" to do evil. *Int J Cancer.* 2016;138:2078–87.
- Wojtukiewicz MZ, Sierko E, Hempel D, Tucker SC, Honn KV. Platelets and cancer angiogenesis nexus. *Cancer Metastasis Rev.* 2017;36:249–62.
- Weiss L. Metastatic inefficiency. *Adv Cancer Res.* 1990;54:159–211.
- Luzzi KJ, MacDonald IC, Schmidt EE, Kerkvliet N, Morris VL, Chambers AF, et al. Multistep nature of metastatic inefficiency: dormancy of solitary cells after successful extravasation and limited survival of early micrometastases. *Am J Pathol.* 1998;153:865–73.
- Nieswandt B, Hafner M, Echtenacher B, Männel DN. Lysis of tumor cells by natural killer cells in mice is impeded by platelets. *Cancer Res.* 1999;59:1295–300.
- Zucchella M, Dezza L, Pacchiarini L, Meloni F, Tacconi F, Bonomi E, et al. Human tumor cells cultured "in vitro" activate platelet function by producing ADP or thrombin. *Haematologica.* 1989;74:541–5.

15. Aitokallio-Tallberg A, Kärkkäinen J, Pantzar P, Wahlström T, Ylikorkala O. Prostacyclin and thromboxane in breast cancer: relationship between steroid receptor status and medroxyprogesterone acetate. *Br J Cancer*. 1985;51:671–4.
16. Aitokallio-Tallberg AM, Viinikka LU, Ylikorkala RO. Increased synthesis of prostacyclin and thromboxane in human ovarian malignancy. *Cancer Res*. 1988;48:2396–8.
17. Yu L-X, Yan L, Yang W, Wu F-Q, Ling Y, Chen S-Z, et al. Platelets promote tumour metastasis via interaction between TLR4 and tumour cell-released high-mobility group box1 protein. *Nat Commun*. 2014;5:5256.
18. Ward Y, Lake R, Faraji F, Sperger J, Martin P, Gilliard C, et al. Platelets promote metastasis via binding tumor CD97 leading to bidirectional signaling that coordinates transendothelial migration. *Cell Rep*. 2018;23:808–22.
19. Han X, Guo B, Li Y, Zhu B. Tissue factor in tumor microenvironment: a systematic review. *J Hematol Oncol*. 2014;7:54.
20. Adams GN, Rosenfeldt L, Frederick M, Miller W, Waltz D, Kombrinck K, et al. Colon cancer growth and dissemination relies upon thrombin, stromal PAR-1, and fibrinogen. *Cancer Res*. 2015;75:4235–43.
21. Queiroz KCS, Shi K, Duitman J, Aberson HL, Wilmink JW, van Noesel CJM, et al. Protease-activated receptor-1 drives pancreatic cancer progression and chemoresistance. *Int J Cancer*. 2014;135:2294–304.
22. Tsopanoglou NE, Maragoudakis ME. On the mechanism of thrombin-induced angiogenesis. Potentiation of vascular endothelial growth factor activity on endothelial cells by up-regulation of its receptors. *J Biol Chem*. 1999;274:23969–76.
23. Chen D, Abrahams JM, Smith LM, McVey JH, Lechler RI, Dorling A. Regenerative repair after endoluminal injury in mice with specific antagonism of protease activated receptors on CD34+ vascular progenitors. *Blood*. 2008;111:4155–64.
24. Konstantoulaki M, Kouklis P, Malik AB. Protein kinase C modifications of VE-cadherin, p120, and beta-catenin contribute to endothelial barrier dysregulation induced by thrombin. *Am J Physiol Lung Cell Mol Physiol*. 2003;285:L434–42.
25. Shao B, Wahrenbrock MG, Yao L, David T, Coughlin SR, Xia L, et al. Carcinoma mucins trigger reciprocal activation of platelets and neutrophils in a murine model of trossseau syndrome. *Blood*. 2011;118:4015–23.
26. Oleksowicz L, Bhagwati N, DeLeon-Fernandez M. Deficient activity of von Willebrand's factor-cleaving protease in patients with disseminated malignancies. *Cancer Res*. 1999;59:2244–50.
27. Dvorak HF, Quay SC, Orenstein NS, Dvorak AM, Hahn P, Bitzer AM, et al. Tumor shedding and coagulation. *Science*. 1981;212:923–4.
28. Auwerda JJA, Yuana Y, Osanto S, de Maat MPM, Sonneveld P, Bertina RM, et al. Microparticle-associated tissue factor activity and venous thrombosis in multiple myeloma. *Thromb Haemost*. 2011;105:14–20.
29. Alonso-Escolano D, Strongin AY, Chung AW, Deryugina EI, Radomski MW. Membrane type-1 matrix metalloproteinase stimulates tumour cell-induced platelet aggregation: role of receptor glycoproteins. *Br J Pharmacol*. 2004;141:241–52.
30. Melnikova VO, Mourad-Zeidan AA, Lev DC, Bar-Eli M. Platelet-activating factor mediates MMP-2 expression and activation via phosphorylation of cAMP-response element-binding protein and contributes to melanoma metastasis. *J Biol Chem*. 2006;281:2911–22.
31. Chew EC, Wallace AC. Demonstration of fibrin in early stages of experimental metastases. *Cancer Res*. 1976;36:1904–9.
32. Palumbo JS, Talmage KE, Massari JV, La Jeunesse CM, Flick MJ, Kombrinck KW, et al. Platelets and fibrin(ogen) increase metastatic potential by impeding natural killer cell-mediated elimination of tumor cells. *Blood*. 2005;105:178–85.
33. Palumbo JS, Talmage KE, Massari JV, La Jeunesse CM, Flick MJ, Kombrinck KW, et al. Tumor cell-associated tissue factor and circulating hemostatic factors cooperate to increase metastatic potential through natural killer cell-dependent and-independent mechanisms. *Blood*. 2007;110:133–41.
34. Palumbo JS, Barney KA, Blevins EA, Shaw MA, Mishra A, Flick MJ, et al. Factor XIII transglutaminase supports hematogenous tumor cell metastasis through a mechanism dependent on natural killer cell function. *J Thromb Haemost*. 2008;8:812–9.
35. Kopp H-G, Placke T, Salih HR. Platelet-derived transforming growth factor-beta down-regulates NKG2D thereby inhibiting natural killer cell antitumor reactivity. *Cancer Res*. 2009;69:7775–83.
36. Placke T, Örgel M, Schaller M, Jung G, Rammensee H-G, Kopp H-G, et al. Platelet-derived MHC class I confers a pseudonormal phenotype to cancer cells that subverts the antitumor reactivity of natural killer immune cells. *Cancer Res*. 2012;72:440–8.
37. Placke T, Salih HR, Kopp H-G. G1TR ligand provided by thrombopoietic cells inhibits NK cell antitumor activity. *J Immunol*. 2012;189:154–60.
38. Duffau P, Seneschal J, Nicco C, Richez C, Lazaro E, Douchet I, et al. Platelet CD154 potentiates interferon-alpha secretion by plasmacytoid dendritic cells in systemic lupus erythematosus. *Sci Transl Med*. 2010;2:47ra63.
39. Haselmayer P, Grosse-Hovest L, von Landenberg P, Schild H, Radsak MP. TREM-1 ligand expression on platelets enhances neutrophil activation. *Blood*. 2007;110:1029–35.
40. Xiang B, Zhang G, Guo L, Li X-A, Morris AJ, Daugherty A, et al. Platelets protect from septic shock by inhibiting macrophage-dependent inflammation via the cyclooxygenase 1 signalling pathway. *Nat Commun*. 2013;4:2657.
41. Elzey BD, Tian J, Jensen RJ, Swanson AK, Lees JR, Lentz SR, et al. Platelet-mediated modulation of adaptive immunity. A communication link between innate and adaptive immune compartments. *Immunity*. 2003;19:9–19.
42. Rachidi S, Metelli A, Riesenberger B, Wu BX, Nelson MH, Wallace C, et al. Platelets subvert T cell immunity against cancer via GARP-TGFβ axis. *Sci Immunol*. 2017;2(11). <https://doi.org/10.1126/sciimmunol.aai7911>.
43. Metelli A, Salem M, Wallace CH, Wu BX, Li A, Li X, et al. Immunoregulatory functions and the therapeutic implications of GARP-TGF-β in inflammation and cancer. *J Hematol Oncol*. 2018;11:24.
44. Haemmerle M, Taylor ML, Gutschner T, Pradeep S, Cho MS, Sheng J, et al. Platelets reduce anoikis and promote metastasis by activating YAP1 signaling. *Nat Commun*. 2017;8:310.
45. Xu XR, Carrim N, Neves MAD, McKeown T, Stratton TW, Coelho RMP, et al. Platelets and platelet adhesion molecules: novel mechanisms of thrombosis and anti-thrombotic therapies. *Thromb J*. 2016;14:29.
46. Saboor M, Ayub Q, Ilyas S, Moineddin. Platelet receptors; an instrumental of platelet physiology. *Pak J Med Sci*. 2013;29:891–6.
47. Ruggeri ZM. Platelets in atherothrombosis. *Nat Med*. 2002;8:1227–34.
48. Crockett-Torabi E. Selectins and mechanisms of signal transduction. *J Leukoc Biol*. 1998;63:1–14.
49. Kansas GS. Selectins and their ligands: current concepts and controversies. *Blood*. 1996;88:3259–87.
50. McEver RP. Selectin-carbohydrate interactions during inflammation and metastasis. *Glycoconj J*. 1997;14:585–91.
51. Palabrica T, Lobb R, Furie BC, Aronovitz M, Benjamin C, Hsu YM, et al. Leukocyte accumulation promoting fibrin deposition is mediated in vivo by P-selectin on adherent platelets. *Nature*. 1992;359:848–51.
52. Kim YJ, Borsig L, Varki NM, Varki A. P-selectin deficiency attenuates tumor growth and metastasis. *Proc Natl Acad Sci U S A*. 1998;95:9325–30.
53. Läubli H, Borsig L. Selectins as mediators of lung metastasis. *Cancer Microenviron Off J Int Cancer Microenviron Soc*. 2010;3:97–105.
54. Mannori G, Crottet P, Cecconi O, Hanasaki K, Aruffo A, Nelson RM, et al. Differential colon cancer cell adhesion to E-, P-, and L-selectin: role of mucin-type glycoproteins. *Cancer Res*. 1995;55:4425–31.
55. Burdick MM, Konstantopoulos K. Platelet-induced enhancement of LS174T colon carcinoma and THP-1 monocytoic cell adhesion to vascular endothelium under flow. *Am J Physiol Cell Physiol*. 2004;287:C539–47.
56. Ludwig RJ, Boehme B, Podda M, Henschler R, Jager E, Tandi C, et al. Endothelial P-selectin as a target of heparin action in experimental melanoma lung metastasis. *Cancer Res*. 2004;64:2743–50.
57. Coupland LA, Chong BH, Parish CR. Platelets and P-selectin control tumor cell metastasis in an organ-specific manner and independently of NK cells. *Cancer Res*. 2012;72:4662–71.
58. Becker KA, Beckmann N, Adams C, Hessler G, Kramer M, Gulbins E, et al. Melanoma cell metastasis via P-selectin-mediated activation of acid sphingomyelinase in platelets. *Clin Exp Metastasis*. 2017;34:25–35.
59. Qi C, Wei B, Zhou W, Yang Y, Li B, Guo S, et al. P-selectin-mediated platelet adhesion promotes tumor growth. *Oncotarget*. 2015;6:6584–96.
60. Nolo R, Herbrich S, Rao A, Zweidler-McKay P, Kannan S, Gopalakrishnan V. Targeting P-selectin blocks neuroblastoma growth. *Oncotarget*. 2017;8:86657–70.
61. Läubli H, Spanaus K-S, Borsig L. Selectin-mediated activation of endothelial cells induces expression of CCL5 and promotes metastasis through recruitment of monocytes. *Blood*. 2009;114:4583–91.
62. Zuchtriegel G, Uhl B, Pühr-Westerheide D, Pörnbacher M, Lauber K, Krombach F, et al. Platelets guide leukocytes to their sites of extravasation. *PLoS Biol*. 2016;14:e1002459.
63. da Costa Martins PA, van Gils JM, Mol A, Hordijk PL, Zwaginga JJ. Platelet binding to monocytes increases the adhesive properties of monocytes by

- up-regulating the expression and functionality of beta1 and beta2 integrins. *J Leukoc Biol.* 2006;79:499–507.
64. Humphries JD, Byron A, Humphries MJ. Integrin ligands at a glance. *J Cell Sci.* 2006;119:3901–3.
  65. Nieswandt B, Brakebusch C, Bergmeier W, Schulte V, Bouvard D, Mokhtari-Nejad R, et al. Glycoprotein VI but not alpha2beta1 integrin is essential for platelet interaction with collagen. *EMBO J.* 2001;20:2120–30.
  66. Pugh N, Simpson AMC, Smethurst PA, de Groot PG, Raynal N, Farndale RW. Synergism between platelet collagen receptors defined using receptor-specific collagen-mimetic peptide substrata in flowing blood. *Blood.* 2010;115:5069–79.
  67. Hall CL, Dubyk CW, Riesenberger TA, Shein D, Keller ET, van Golen KL. Type I collagen receptor (alpha2beta1) signaling promotes prostate cancer invasion through RhoC GTPase. *Neoplasia.* 2008;10:797–803.
  68. Sottnik JL, Daignault-Newton S, Zhang X, Morrissey C, Hussain MH, Keller ET, et al. Integrin alpha2beta1 (alpha2B1) promotes prostate cancer skeletal metastasis. *Clin Exp Metastasis.* 2013;30:569–78.
  69. Kunicki TJ, Orzechowski R, Annis D, Honda Y. Variability of integrin alpha 2 beta 1 activity on human platelets. *Blood.* 1993;82:2693–703.
  70. Bennett JS. Regulation of integrins in platelets. *Biopolymers.* 2015;104:323–33.
  71. Tuszyński GP, Kowalska MA. Thrombospondin-induced adhesion of human platelets. *J Clin Invest.* 1991;87:1387–94.
  72. Thiagarajan P, Kelly K. Interaction of thrombin-stimulated platelets with vitronectin (S-protein of complement) substrate: inhibition by a monoclonal antibody to glycoprotein IIb-IIIa complex. *Thromb Haemost.* 1988;60:514–7.
  73. Parker CJ, Stone OL, White VF, Bernshaw NJ. Vitronectin (S protein) is associated with platelets. *Br J Haematol.* 1989;71:245–52.
  74. Grossi IM, Fitzgerald LA, Kendall A, Taylor JD, Sloane BF, Honn KV. Inhibition of human tumor cell induced platelet aggregation by antibodies to platelet glycoproteins Ib and IIb/IIIa. *Proc Soc Exp Biol Med.* 1987;186:378–83.
  75. Bastida E, Almirall L, Ordinas A. Tumor-cell-induced platelet aggregation is a glycoprotein-dependent and lipoxygenase-associated process. *Int J Cancer.* 1987;39:760–3.
  76. Clezardin P, Drouin J, Morel-Kopp MC, Hanss M, Kehrel B, Serre CM, et al. Role of platelet membrane glycoproteins Ib/IX and IIb/IIIa, and of platelet alpha-granule proteins in platelet aggregation induced by human osteosarcoma cells. *Cancer Res.* 1993;53:4695–700.
  77. Boukerche H, Berthier-Vergnes O, Tabone E, Doré JF, Leung LL, McGregor JL. Platelet-melanoma cell interaction is mediated by the glycoprotein IIb-IIIa complex. *Blood.* 1989;74:658–63.
  78. Amirkhosravi A, Mousa SA, Amaya M, Blaydes S, Desai H, Meyer T, et al. Inhibition of tumor cell-induced platelet aggregation and lung metastasis by the oral GpIIb/IIIa antagonist XV454. *Thromb Haemost.* 2003;90:549–54.
  79. Amirkhosravi A, Amaya M, Siddiqui F, Biggerstaff JP, Meyer TV, Francis JL. Blockade of GpIIb/IIIa inhibits the release of vascular endothelial growth factor (VEGF) from tumor cell-activated platelets and experimental metastasis. *Platelets.* 1999;10:285–92.
  80. Engebraaten O, Trikha M, Juell S, Garman-Vik S, Fodstad Ø. Inhibition of in vivo tumour growth by the blocking of host alpha(v)beta3 and alphal(b)beta3 integrins. *Anticancer Res.* 2009;29:131–7.
  81. Lonsdorf AS, Krämer BF, Fahrleitner M, Schönberger T, Gnerlich S, Ring S, et al. Engagement of alphaIIb beta3 (GPIIb/IIIa) with alpha v beta3 integrin mediates interaction of melanoma cells with platelets: a connection to hematogenous metastasis. *J Biol Chem.* 2012;287:2168–78.
  82. Felding-Habermann B, O'Toole TE, Smith JW, Fransvea E, Ruggeri ZM, Ginsberg MH, et al. Integrin activation controls metastasis in human breast cancer. *Proc Natl Acad Sci U S A.* 2001;98:1853–8.
  83. Felding-Habermann B, Fransvea E, O'Toole TE, Manzuk L, Faha B, Hensler M. Involvement of tumor cell integrin alpha v beta 3 in hematogenous metastasis of human melanoma cells. *Clin Exp Metastasis.* 2002;19:427–36.
  84. Nemeth JA, Nakada MT, Trikha M, Lang Z, Gordon MS, Jayson GC, et al. Alpha-v integrins as therapeutic targets in oncology. *Cancer Investig.* 2007;25:632–46.
  85. Mammadova-Bach E, Zigrino P, Brucker C, Bourdon C, Freund M, De Arcangelis A, et al. Platelet integrin alpha2beta1 controls lung metastasis through direct binding to cancer cell-derived ADAM9. *JCI Insight.* 2016;1:e88245.
  86. Murphy G. The ADAMs: signalling scissors in the tumour microenvironment. *Nat Rev Cancer.* 2008;8:929–41.
  87. Berndt MC, Gregory C, Kabral A, Zola H, Fournier D, Castaldi PA. Purification and preliminary characterization of the glycoprotein Ib complex in the human platelet membrane. *Eur J Biochem.* 1985;151:637–49.
  88. Du X, Beutler L, Ruan C, Castaldi PA, Berndt MC. Glycoprotein Ib and glycoprotein IX are fully complexed in the intact platelet membrane. *Blood.* 1987;69:1524–7.
  89. Modderman PW, Admiraal LG, Sonnenberg A, von dem Borne AE. Glycoproteins V and Ib-IX form a noncovalent complex in the platelet membrane. *J Biol Chem.* 1992;267:364–9.
  90. Hagen I, Brosstad F, Gogstad GO, Korsmo R, Solum NO. Further studies on the interaction between thrombin and GP Ib using crossed immunoelectrophoresis. Effect of thrombin inhibitors. *Thromb Res.* 1982;27:549–54.
  91. Romo GM, Dong JF, Schade AJ, Gardiner EE, Kansas GS, Li CQ, et al. The glycoprotein Ib-IX-V complex is a platelet counterreceptor for P-selectin. *J Exp Med.* 1999;190:803–14.
  92. Simon DI, Chen Z, Xu H, Li CQ, J f D, McIntire LV, et al. Platelet glycoprotein Ibalpha is a counterreceptor for the leukocyte integrin Mac-1 (CD11b/CD18). *J Exp Med.* 2000;192:193–204.
  93. Bradford HN, Pixley RA, Colman RW. Human factor XII binding to the glycoprotein Ib-IX-V complex inhibits thrombin-induced platelet aggregation. *J Biol Chem.* 2000;275:22756–63.
  94. Baglia FA, Badellino KO, Li CQ, Lopez JA, Walsh PN. Factor XI binding to the platelet glycoprotein Ib-IX-V complex promotes factor XI activation by thrombin. *J Biol Chem.* 2002;277:1662–8.
  95. Berndt MC, Shen Y, Doppeide SM, Gardiner EE, Andrews RK. The vascular biology of the glycoprotein Ib-IX-V complex. *Thromb Haemost.* 2001;86:178–88.
  96. Canobbio I, Balduini C, Torti M. Signalling through the platelet glycoprotein Ib-V-IX complex. *Cell Signal.* 2004;16:1329–44.
  97. Lian L, Li W, Li Z-Y, Mao Y-X, Zhang Y-T, Zhao Y-M, et al. Inhibition of MCF-7 breast cancer cell-induced platelet aggregation using a combination of antiplatelet drugs. *Oncol Lett.* 2013;5:675–80.
  98. Jain S, Zuka M, Liu J, Russell S, Dent J, Guerrero JA, et al. Platelet glycoprotein Ib alpha supports experimental lung metastasis. *Proc Natl Acad Sci U S A.* 2007;104:9024–8.
  99. Erpenbeck L, Nieswandt B, Schön M, Pozgajova M, Schön MP. Inhibition of platelet GPIb alpha and promotion of melanoma metastasis. *J Invest Dermatol.* 2010;130:576–86.
  100. Gabrilovich DI, Ostrand-Rosenberg S, Bronte V. Coordinated regulation of myeloid cells by tumours. *Nat Rev Immunol.* 2012;12:253–68.
  101. Murdoch C, Muthana M, Coffelt SB, Lewis CE. The role of myeloid cells in the promotion of tumour angiogenesis. *Nat Rev Cancer.* 2008;8:618–31.
  102. Hiratsuka S, Watanabe A, Aburatani H, Maru Y. Tumour-mediated upregulation of chemoattractants and recruitment of myeloid cells predetermines lung metastasis. *Nat Cell Biol.* 2006;8:1369–75.
  103. Kim S, Takahashi H, Lin W-W, Descargues P, Grivennikov S, Kim Y, et al. Carcinoma-produced factors activate myeloid cells through TLR2 to stimulate metastasis. *Nature.* 2009;457:102–6.
  104. Kaplan RN, Riba RD, Zacharoulis S, Bramley AH, Vincent L, Costa C, et al. VEGFR1-positive haematopoietic bone marrow progenitors initiate the pre-metastatic niche. *Nature.* 2005;438:820–7.
  105. Labelle M, Begum S, Hynes RO. Platelets guide the formation of early metastatic niches. *Proc Natl Acad Sci U S A.* 2014;111:E3053–61.
  106. Ponert JM, Schwarz S, Haschemi R, Müller J, Pötzsch B, Bendas G, et al. The mechanisms how heparin affects the tumor cell induced VEGF and chemokine release from platelets to attenuate the early metastatic niche formation. *PLoS One.* 2018;13:e0191303.
  107. Borsig L, Wong R, Hynes RO, Varki NM, Varki A. Synergistic effects of L- and P-selectin in facilitating tumor metastasis can involve non-mucin ligands and implicate leukocytes as enhancers of metastasis. *Proc Natl Acad Sci U S A.* 2002;99:2193–8.
  108. Qian B-Z, Li J, Zhang H, Kitamura T, Zhang J, Campion LR, et al. CCL2 recruits inflammatory monocytes to facilitate breast-tumour metastasis. *Nature.* 2011;475:222–5.
  109. Zhao L, Lim SY, Gordon-Weeks AN, Tapmeier TT, Im JH, Cao Y, et al. Recruitment of a myeloid cell subset (CD11b/Gr1 mid) via CCL2/CCR2 promotes the development of colorectal cancer liver metastasis. *Hepatology.* 2013;57:829–39.
  110. Gil-Bernabé AM, Ferjancic S, Talaka M, Zhao L, Allen PD, Im JH, et al. Recruitment of monocytes/macrophages by tissue factor-mediated coagulation is essential for metastatic cell survival and premetastatic niche establishment in mice. *Blood.* 2012;119:3164–75.
  111. Franco AT, Corken A, Ware J. Platelets at the interface of thrombosis, inflammation, and cancer. *Blood.* 2015;126:582–8.

112. Schumacher D, Strlic B, Sivaraj KK, Wetschurck N, Offermanns S. Platelet-derived nucleotides promote tumor-cell transendothelial migration and metastasis via P2Y2 receptor. *Cancer Cell*. 2013;24:130–7.
113. Coppinger JA, Cagney G, Toomey S, Kislinger T, Belton O, McRedmond JP, et al. Characterization of the proteins released from activated platelets leads to localization of novel platelet proteins in human atherosclerotic lesions. *Blood*. 2004;103:2096–104.
114. Mezouar S, Darbousset R, Dignat-George F, Panicot-Dubois L, Dubois C. Inhibition of platelet activation prevents the P-selectin and integrin-dependent accumulation of cancer cell microparticles and reduces tumor growth and metastasis in vivo. *Int J Cancer*. 2015;136:462–75.
115. Trikha M, Zhou Z, Timar J, Raso E, Kennel M, Emmell E, et al. Multiple roles for platelet GPIIb/IIIa and alphavbeta3 integrins in tumor growth, angiogenesis, and metastasis. *Cancer Res*. 2002;62:2824–33.
116. Bottsford-Miller J, Choi H-J, Dalton HF, Stone RL, Cho MS, Haemmerle M, et al. Differential platelet levels affect response to taxane-based therapy in ovarian cancer. *Clin Cancer Res*. 2015;21:602–10.
117. Battinelli EM, Markens BA, Italiano JE. Release of angiogenesis regulatory proteins from platelet alpha granules: modulation of physiologic and pathologic angiogenesis. *Blood*. 2011;118:1359–69.
118. Möhle R, Green D, Moore MA, Nachman RL, Rafii S. Constitutive production and thrombin-induced release of vascular endothelial growth factor by human megakaryocytes and platelets. *Proc Natl Acad Sci U S A*. 1997;94:663–8.
119. Heldin CH, Westermark B, Wasteson A. Platelet-derived growth factor. Isolation by a large-scale procedure and analysis of subunit composition. *Biochem J*. 1981;193:907–13.
120. Kaplan DR, Chao FC, Stiles CD, Antoniades HN, Scher CD. Platelet alpha granules contain a growth factor for fibroblasts. *Blood*. 1979;53:1043–52.
121. Ben-Ezra J, Sheibani K, Hwang DL, Lev-Ran A. Megakaryocyte synthesis is the source of epidermal growth factor in human platelets. *Am J Pathol*. 1990;137:755–9.
122. Ma L, Elliott SN, Cirino G, Buret A, Ignarro LJ, Wallace JL. Platelets modulate gastric ulcer healing: role of endostatin and vascular endothelial growth factor release. *Proc Natl Acad Sci U S A*. 2001;98:6470–5.
123. Jurasz P, Alonso D, Castro-Blanco S, Murad F, Radomski MW. Generation and role of angiostatin in human platelets. *Blood*. 2003;102:3217–23.
124. Maione TE, Gray GS, Petro J, Hunt AJ, Donner AL, Bauer SI, et al. Inhibition of angiogenesis by recombinant human platelet factor-4 and related peptides. *Science*. 1990;247:77–9.
125. McLaren KM. Immunohistochemical localisation of thrombospondin in human megakaryocytes and platelets. *J Clin Pathol*. 1983;36:197–9.
126. Karayiannakis AJ, Syrigos KN, Polychronidis A, Zbar A, Kouraklis G, Simopoulos C, et al. Circulating VEGF levels in the serum of gastric cancer patients. *Ann Surg*. 2002;236:37–42.
127. Karayiannakis AJ, Bolanaki H, Syrigos KN, Asimakopoulos B, Polychronidis A, Anagnostoulis S, et al. Serum vascular endothelial growth factor levels in pancreatic cancer patients correlate with advanced and metastatic disease and poor prognosis. *Cancer Lett*. 2003;194:119–24.
128. Verheul HM, Hoekman K, Lupu F, Broxterman HJ, van der Valk P, Kakkar AK, et al. Platelet and coagulation activation with vascular endothelial growth factor generation in soft tissue sarcomas. *Clin Cancer Res*. 2000;6:166–71.
129. Janowska-Wieczorek A, Wysoczynski M, Kijowski J, Marquez-Curtis L, Machalinski B, Ratajczak J, et al. Microvesicles derived from activated platelets induce metastasis and angiogenesis in lung cancer. *Int J Cancer*. 2005;113:752–60.
130. Brill A, Dashevsky O, Rivo J, Gozal Y, Varon D. Platelet-derived microparticles induce angiogenesis and stimulate post-ischemic revascularization. *Cardiovasc Res*. 2005;67:30–8.
131. Semple JW, Italiano JE, Freedman J. Platelets and the immune continuum. *Nat Rev Immunol*. 2011;11:264–74.
132. Chiodoni C, Iezzi M, Guiducci C, Sangaletti S, Alessandrini I, Ratti C, et al. Triggering CD40 on endothelial cells contributes to tumor growth. *J Exp Med*. 2006;203:2441–50.
133. Italiano JE, Richardson JL, Patel-Hett S, Battinelli E, Zaslavsky A, Short S, et al. Angiogenesis is regulated by a novel mechanism: pro- and antiangiogenic proteins are organized into separate platelet alpha granules and differentially released. *Blood*. 2008;111:1227–33.
134. Chatterjee M, Huang Z, Zhang W, Jiang L, Hultenby K, Zhu L, et al. Distinct platelet packaging, release, and surface expression of proangiogenic and antiangiogenic factors on different platelet stimuli. *Blood*. 2011;117:3907–11.
135. Bambace NM, Levis JE, Holmes CE. The effect of P2Y-mediated platelet activation on the release of VEGF and endostatin from platelets. *Platelets*. 2010;21:85–93.
136. Jonnalagadda D, Izu LT, Whiteheart SW. Platelet secretion is kinetically heterogeneous in an agonist-responsive manner. *Blood*. 2012;120:5209–16.
137. Battinelli EM, Markens BA, Kulenthirarajan RA, Machlus KR, Flaumenhaft R, Italiano JE. Anticoagulation inhibits tumor cell-mediated release of platelet angiogenic proteins and diminishes platelet angiogenic response. *Blood*. 2014;123:101–12.
138. Johnson KE, Forward JA, Tippy MD, Ceglowski JR, El-Husayni S, Kulenthirarajan R, et al. tamoxifen directly inhibits platelet angiogenic potential and platelet-mediated metastasis. *Arterioscler Thromb Vasc Biol*. 2017;37:664–74.
139. Peters CG, Michelson AD, Flaumenhaft R. Granule exocytosis is required for platelet spreading: differential sorting of  $\alpha$ -granules expressing VAMP-7. *Blood*. 2012;120:199–206.
140. Gidlöf O, van der Brug M, Ohman J, Gilje P, Olde B, Wahlestedt C, et al. Platelets activated during myocardial infarction release functional miRNA, which can be taken up by endothelial cells and regulate ICAM1 expression. *Blood*. 2013;121:3908–17 51–26.
141. Feng W, Madajka M, Kerr BA, Mahabeshwar GH, Whiteheart SW, Byzova TV. A novel role for platelet secretion in angiogenesis: mediating bone marrow-derived cell mobilization and homing. *Blood*. 2011;117:3893–902.
142. Colonna M, Samaridis J, Angman L. Molecular characterization of two novel C-type lectin-like receptors, one of which is selectively expressed in human dendritic cells. *Eur J Immunol*. 2000;30:697–704.
143. Sobanov Y, Bernreiter A, Derdak S, Mechtcheriakova D, Schweighofer B, Döchler M, et al. A novel cluster of lectin-like receptor genes expressed in monocytic, dendritic and endothelial cells maps close to the NK receptor genes in the human NK gene complex. *Eur J Immunol*. 2001;31:3493–503.
144. Suzuki-Inoue K, Fuller GLJ, García A, Eble JA, Pöhlmann S, Inoue O, et al. A novel Syk-dependent mechanism of platelet activation by the C-type lectin receptor CLEC-2. *Blood*. 2006;107:542–9.
145. Suzuki-Inoue K, Inoue O, Ozaki Y. Novel platelet activation receptor CLEC-2: from discovery to prospects. *J Thromb Haemost*. 2011;9(Suppl 1):44–55.
146. Underhill DM, Goodridge HS. The many faces of ITAMs. *Trends Immunol*. 2007;28:66–73.
147. Hughes CE, Sinha U, Pandey A, Eble JA, O'Callaghan CA, Watson SP. Critical role for an acidic amino acid region in platelet signaling by the HemITAM (hemi-immunoreceptor tyrosine-based activation motif) containing receptor CLEC-2 (C-type lectin receptor-2). *J Biol Chem*. 2013;288:5127–35.
148. Séverin S, Pollitt AY, Navarro-Nuñez L, Nash CA, Mourão-Sá D, Eble JA, et al. Syk-dependent phosphorylation of CLEC-2: a novel mechanism of hem-immunoreceptor tyrosine-based activation motif signaling. *J Biol Chem*. 2011;286:4107–16.
149. Bauer B, Steinle A. HemITAM: a single tyrosine motif that packs a punch. *Sci Signal*. 2017;10(508). <https://doi.org/10.1126/scisignal.aan3676>.
150. Watanabe M, Okochi E, Sugimoto Y, Tsuruo T. Identification of a platelet-aggregating factor of murine colon adenocarcinoma 26: Mr 44,000 membrane protein as determined by monoclonal antibodies. *Cancer Res*. 1988;48:6411–6.
151. Sugimoto Y, Watanabe M, Oh-hara T, Sato S, Isoe T, Tsuruo T. Suppression of experimental lung colonization of a metastatic variant of murine colon adenocarcinoma 26 by a monoclonal antibody 8F11 inhibiting tumor cell-induced platelet aggregation. *Cancer Res*. 1991;51:921–5.
152. Kato Y, Fujita N, Kunita A, Sato S, Kaneko M, Osawa M, et al. Molecular identification of Aggrus/T1alpha as a platelet aggregation-inducing factor expressed in colorectal tumors. *J Biol Chem*. 2003;278:51599–605.
153. Tsuruo T, Fujita N. Platelet aggregation in the formation of tumor metastasis. *Proc Jpn Acad Ser B Phys Biol Sci*. 2008;84:189–98.
154. Suzuki-Inoue K, Kato Y, Inoue O, Kaneko MK, Mishima K, Yatomi Y, et al. Involvement of the snake toxin receptor CLEC-2, in podoplanin-mediated platelet activation, by cancer cells. *J Biol Chem*. 2007;282:25993–6001.
155. Christou CM, Pearce AC, Watson AA, Mistry AR, Pollitt AY, Fenton-May AE, et al. Renal cells activate the platelet receptor CLEC-2 through podoplanin. *Biochem J*. 2008;411:133–40.
156. Kato Y, Kaneko MK, Kunita A, Ito H, Kameyama A, Ogasawara S, et al. Molecular analysis of the pathophysiological binding of the platelet aggregation-inducing factor podoplanin to the C-type lectin-like receptor CLEC-2. *Cancer Sci*. 2008;99:54–61.
157. Toyoshima M, Nakajima M, Yamori T, Tsuruo T. Purification and characterization of the platelet-aggregating sialoglycoprotein gp44

- expressed by highly metastatic variant cells of mouse colon adenocarcinoma 26. *Cancer Res.* 1995;55:767–73.
158. Dang Q, Liu J, Li J, Sun Y. Podoplanin: a novel regulator of tumor invasion and metastasis. *Med Oncol.* 2014;31:24.
  159. Schacht V, Ramirez MI, Hong Y-K, Hirakawa S, Feng D, Harvey N, et al. T1alpha/podoplanin deficiency disrupts normal lymphatic vasculature formation and causes lymphedema. *EMBO J.* 2003;22:3546–56.
  160. Lowe KL, Navarro-Nunez L, Watson SP. Platelet CLEC-2 and podoplanin in cancer metastasis. *Thromb Res.* 2012;129(Suppl 1):S30–7.
  161. Takemoto A, Miyata K, Fujita N. Platelet-activating factor podoplanin: from discovery to drug development. *Cancer Metastasis Rev.* 2017;36:225–34.
  162. Martín-Villar E, Megías D, Castel S, Yurrita MM, Vilaró S, Quintanilla M. Podoplanin binds ERM proteins to activate RhoA and promote epithelial-mesenchymal transition. *J Cell Sci.* 2006;119:4541–53.
  163. Ogasawara S, Kaneko MK, Price JE, Kato Y. Characterization of anti-podoplanin monoclonal antibodies: critical epitopes for neutralizing the interaction between podoplanin and CLEC-2. *Hybridoma* 2005. 2008;27:259–67.
  164. Nakazawa Y, Takagi S, Sato S, Oh-hara T, Koike S, Takami M, et al. Prevention of hematogenous metastasis by neutralizing mice and its chimeric anti-Aggrus/podoplanin antibodies. *Cancer Sci.* 2011;102:2051–7.
  165. Kunita A, Kashima TG, Morishita Y, Fukayama M, Kato Y, Tsuruo T, et al. The platelet aggregation-inducing factor aggrus/podoplanin promotes pulmonary metastasis. *Am J Pathol.* 2007;170:1337–47.
  166. Takagi S, Sato S, Oh-hara T, Takami M, Koike S, Mishima Y, et al. Platelets promote tumor growth and metastasis via direct interaction between aggrus/podoplanin and CLEC-2. *PLoS One.* 2013;8:e73609.
  167. Takagi S, Takemoto A, Takami M, Oh-hara T, Fujita N. Platelets promote osteosarcoma cell growth through activation of the platelet-derived growth factor receptor-Akt signaling axis. *Cancer Sci.* 2014;105:983–8.
  168. Takemoto A, Okitaka M, Takagi S, Takami M, Sato S, Nishio M, et al. A critical role of platelet TGF- $\beta$  release in podoplanin-mediated tumour invasion and metastasis. *Sci Rep.* 2017;7:42186.
  169. Labelle M, Begum S, Hynes RO. Direct signaling between platelets and cancer cells induces an epithelial-mesenchymal-like transition and promotes metastasis. *Cancer Cell.* 2011;20:576–90.
  170. Chang Y-W, Hsieh P-W, Chang Y-T, Lu M-H, Huang T-F, Chong K-Y, et al. Identification of a novel platelet antagonist that binds to CLEC-2 and suppresses podoplanin-induced platelet aggregation and cancer metastasis. *Oncotarget.* 2015;6:42733–48.
  171. Shirai T, Inoue O, Tamura S, Tsukiji N, Sasaki T, Endo H, et al. C-type lectin-like receptor 2 promotes hematogenous tumor metastasis and prothrombotic state in tumor-bearing mice. *J Thromb Haemost.* 2017;15:513–25.
  172. May F, Hagedorn I, Pleines I, Bender M, Vögtle T, Eble J, et al. CLEC-2 is an essential platelet-activating receptor in hemostasis and thrombosis. *Blood.* 2009;114:3464–72.
  173. Lorenz V, Stegner D, Stritt S, Vögtle T, Kiefer F, Witke W, et al. Targeted downregulation of platelet CLEC-2 occurs through Syk-independent internalization. *Blood.* 2015;125:4069–77.
  174. Newman DK. CLEC-2: the inside story. *Blood.* 2015;125:3972–4.
  175. Moroi M, Jung SM, Okuma M, Shinmyozu K. A patient with platelets deficient in glycoprotein VI that lack both collagen-induced aggregation and adhesion. *J Clin Invest.* 1989;84:1440–5.
  176. Dütting S, Bender M, Nieswandt B. Platelet GPVI: a target for antithrombotic therapy? *Trends Pharmacol Sci.* 2012;33:583–90.
  177. Zahid M, Mangin P, Loyau S, Hechler B, Billiald P, Gachet C, et al. The future of glycoprotein VI as an antithrombotic target. *J Thromb Haemost.* 2012;10:2418–27.
  178. Best D, Senis YA, Jarvis GE, Eagleton HJ, Roberts DJ, Saito T, et al. GPVI levels in platelets: relationship to platelet function at high shear. *Blood.* 2003;102:2811–8.
  179. Proty MB, Watkins NA, Colombo D, Thomas SG, Heath VL, Herbert JMJ, et al. Identification of Tspan9 as a novel platelet tetraspanin and the collagen receptor GPVI as a component of tetraspanin microdomains. *Biochem J.* 2009;417:391–400.
  180. Haining EJ, Matthews AL, Noy PJ, Romanska HM, Harris HJ, Pike J, et al. Tetraspanin Tspan9 regulates platelet collagen receptor GPVI lateral diffusion and activation. *Platelets.* 2017;28:629–42.
  181. Loyau S, Dumont B, Ollivier V, Boulaftali Y, Feldman L, Ajzenberg N, et al. Platelet glycoprotein VI dimerization, an active process inducing receptor competence, is an indicator of platelet reactivity. *Arterioscler Thromb Vasc Biol.* 2012;32:778–85.
  182. Poulter NS, Pollitt AY, Owen DM, Gardiner EE, Andrews RK, Shimizu H, et al. Clustering of glycoprotein VI (GPVI) dimers upon adhesion to collagen as a mechanism to regulate GPVI signaling in platelets. *J Thromb Haemost.* 2017;15:549–64.
  183. Watson SP, Auger JM, McCarty OJT, Pearce AC. GPVI and integrin  $\alpha$ IIb $\beta$ 3 signaling in platelets. *J Thromb Haemost.* 2005;3:1752–62.
  184. Hughes CE, Auger JM, McGlade J, Eble JA, Pearce AC, Watson SP. Differential roles for the adapters gads and LAT in platelet activation by GPVI and CLEC-2. *J Thromb Haemost.* 2008;6:2152–9.
  185. Kato K, Kanaji T, Russell S, Kunicki TJ, Furihata K, Kanaji S, et al. The contribution of glycoprotein VI to stable platelet adhesion and thrombus formation illustrated by targeted gene deletion. *Blood.* 2003;102:1701–7.
  186. Konstantinides S, Ware J, Marchese P, Almus-Jacobs F, Loskutoff DJ, Ruggeri ZM. Distinct antithrombotic consequences of platelet glycoprotein I $\alpha$  and VI deficiency in a mouse model of arterial thrombosis. *J Thromb Haemost.* 2006;4:2014–21.
  187. Jain S, Russell S, Ware J. Platelet glycoprotein VI facilitates experimental lung metastasis in syngenic mouse models. *J Thromb Haemost.* 2009;7:1713–7.
  188. Dovizio M, Maier TJ, Alberti S, Di Francesco L, Marcantoni E, Münch G, et al. Pharmacological inhibition of platelet-tumor cell cross-talk prevents platelet-induced overexpression of cyclooxygenase-2 in HT29 human colon carcinoma cells. *Mol Pharmacol.* 2013;84:25–40.
  189. Mani SA, Guo W, Liao M-J, Eaton EN, Ayyanan A, Zhou AY, et al. The epithelial-mesenchymal transition generates cells with properties of stem cells. *Cell.* 2008;133:704–15.
  190. Ye X, Weinberg RA. Epithelial-mesenchymal plasticity: a central regulator of cancer progression. *Trends Cell Biol.* 2015;25:675–86.
  191. Scheel C, Eaton EN, Li SH-J, Chaffer CL, Reinhardt F, Kah K-J, et al. Paracrine and autocrine signals induce and maintain mesenchymal and stem cell states in the breast. *Cell.* 2011;145:926–40.
  192. Berndt MC, Metharom P, Andrews RK. Primary haemostasis: newer insights. *Haemophilia.* 2014;20(Suppl 4):15–22.
  193. Bültmann A, Li Z, Wagner S, Peluso M, Schönberger T, Weis C, et al. Impact of glycoprotein VI and platelet adhesion on atherosclerosis—a possible role of fibronectin. *J Mol Cell Cardiol.* 2010;49:532–42.
  194. Alshehri OM, Hughes CE, Montague S, Watson SK, Frampton J, Bender M, et al. Fibrin activates GPVI in human and mouse platelets. *Blood.* 2015;126:1601–8.
  195. Inoue O, Suzuki-Inoue K, McCarty OJT, Moroi M, Ruggeri ZM, Kunicki TJ, et al. Laminin stimulates spreading of platelets through integrin  $\alpha$ 6 $\beta$ 1-dependent activation of GPVI. *Blood.* 2006;107:1405–12.
  196. Barnes NLP, Warnberg F, Farnie G, White D, Jiang W, Anderson E, et al. Cyclooxygenase-2 inhibition: effects on tumour growth, cell cycling and lymphangiogenesis in a xenograft model of breast cancer. *Br J Cancer.* 2007;96:575–82.
  197. Kubo H, Hosono K, Suzuki T, Ogawa Y, Kato H, Kamata H, et al. Host prostaglandin EP3 receptor signaling relevant to tumor-associated lymphangiogenesis. *Biomed Pharmacother.* 2010;64:101–6.
  198. Hosono K, Suzuki T, Tamaki H, Sakagami H, Hayashi I, Narumiya S, et al. Roles of prostaglandin E2-EP3/EP4 receptor signaling in the enhancement of lymphangiogenesis during fibroblast growth factor-2-induced granulation formation. *Arterioscler Thromb Vasc Biol.* 2011;31:1049–58.
  199. Shen J, Pavone A, Mikulec C, Hensley SC, Traner A, Chang TK, et al. Protein expression profiles in the epidermis of cyclooxygenase-2 transgenic mice by 2-dimensional gel electrophoresis and mass spectrometry. *J Proteome Res.* 2007;6:273–86.
  200. Arman M, Krauel K. Human platelet IgG Fc receptor Fc $\gamma$ RIIA in immunity and thrombosis. *J Thromb Haemost.* 2015;13:893–908.
  201. Bergmeier W, Stefanini L. Platelet ITAM signaling. *Curr Opin Hematol.* 2013;20:445–50.
  202. Boulaftali Y, Hess PR, Kahn ML, Bergmeier W. Platelet immunoreceptor tyrosine-based activation motif (ITAM) signaling and vascular integrity. *Circ Res.* 2014;114:1174–84.
  203. Stegner D, Haining EJ, Nieswandt B. Targeting glycoprotein VI and the immunoreceptor tyrosine-based activation motif signaling pathway. *Arterioscler Thromb Vasc Biol.* 2014;34:1615–20.
  204. Mitrugno A, Williams D, Kerrigan SW, Moran N. A novel and essential role for Fc $\gamma$ RIIA in cancer cell-induced platelet activation. *Blood.* 2014;123:249–60.
  205. Zhi H, Rauova L, Hayes V, Gao C, Boylan B, Newman DK, et al. Cooperative integrin/ITAM signaling in platelets enhances thrombus formation in vitro and in vivo. *Blood.* 2013;121:1858–67.