



OPEN

Figla promotes secondary follicle growth in mature mice

Asuka Okunomiya¹, Akihito Horie^{1✉}, Hirohiko Tani¹, Yukiyasu Sato¹, Shiro Takamatsu¹, J. B. Brown², Miki Sugimoto³, Junzo Hamanishi¹, Eiji Kondoh¹, Noriomi Matsumura⁴ & Masaki Mandai¹

The *in vitro* growth (IVG) of human follicles is a potential fertility option for women for whom cryopreserved ovarian tissues cannot be transplanted due to the risk of cancer cell reintroduction; however, there is currently no established method. Furthermore, optimal IVG conditions may differ between the follicles of adult and pre-pubertal females due to molecular differences suggested by basic research. To systematically identify differences between the secondary follicles of adult and pre-pubertal females, a comparative transcriptomic study using mice was conducted herein. Among differentially expressed genes (DEGs), *Figla* was up-regulated in mature mice. We successfully down-regulated *Figla* expression in secondary follicle oocytes by a *Figla* siRNA microinjection, and the subsequent IVG of follicles showed that the diameter of these follicles was smaller than those of controls in mature mice, whereas no significant difference was observed in premature mice. The canonical pathways of DEGs between control and *Figla*-reduced secondary follicles suggest that *Figla* up-regulates VDR/RXR activation and down-regulates stem cell pluripotency as well as estrogen signaling. We demonstrated for the first time that folliculogenesis of the secondary follicles of premature and mature mice may be regulated by different factors, such as *Figla* with its possible target genes, providing insights into optimal IVG conditions for adult and pre-pubertal females, respectively.

An *in vitro* culture of human follicles may be a viable option for women for whom cryopreserved ovarian tissues cannot be transplanted due to the risk of reintroducing cancer cells¹; however, there is currently no definitively developed and established method². In 2014, Anderson et al.³ was the first to compare the *in vitro* growth potential of follicles from pre-pubertal girls with that of adults by culturing ovarian biopsies for 6 days, with secondary follicles then being isolated and cultured for a further 6 days. The findings obtained showed that follicles from women of all ages were induced to grow *in vitro*; however, the growth potential of pre-pubertal-derived follicles was significantly weaker than that of adult-derived follicles, indicating that follicle growth-regulating genes in pre-pubertal girls differ from those in adults, and, thus, optimal culture conditions may also differ. In mice, a previous study reported that responsiveness to growth factors, such as activin A and TGF- β , under *in vitro* culture conditions differed between the secondary follicles of mature and premature mice⁴. As the hormonal environment of follicles in the ovary differs between pre-pubertal and adult females⁵ because the ovary is placed in the hypothalamus-pituitary-gonad axis after the onset of puberty in mammals^{6,7}, follicle growth-regulating genes in pre-pubertal and adult females may likely differ. A comparison of gene expression profiles between adult- and pre-pubertal-derived secondary follicles will facilitate the development of efficient *in vitro* follicle culture systems^{8,9} that are optimal for adult and pre-pubertal females. Among mammals, the gene expression of follicles at each follicle developmental stage, from primordial to late antral follicles, has been reported in mice¹⁰ and humans¹¹, and changes in gene expression during follicle development have been presented as a roadmap; however, a comparison of matching developmental stage follicles (e.g., secondary follicles) between mature and premature females has not yet been conducted. Therefore, based on cross-species comparative follicle dynamics^{4,12}, we herein conducted a comparative transcriptomic analysis of secondary follicles between mature and premature mice followed by *in vitro* follicle cultures in an attempt to identify follicle growth-regulating genes that function differently between mature and premature mice. The results obtained may promote the development of efficient *in vitro* follicle culture systems that are optimal for adult and pre-pubertal females.

¹Department of Gynecology and Obstetrics, Kyoto University Graduate School of Medicine, 54 Shogoin Kawahara-cho, Sakyo, Kyoto 606-8507, Japan. ²Life Science Informatics Research Unit, Department of Molecular Biosciences, Kyoto University Graduate School of Medicine, Kyoto, Japan. ³Laboratory of Animal Physiology and Functional Anatomy, Kyoto University Graduate School of Agriculture, Kyoto, Japan. ⁴Department of Obstetrics and Gynecology, Kindai University Faculty of Medicine, Osaka, Japan. ✉email: a_horie@kuhp.kyoto-u.ac.jp

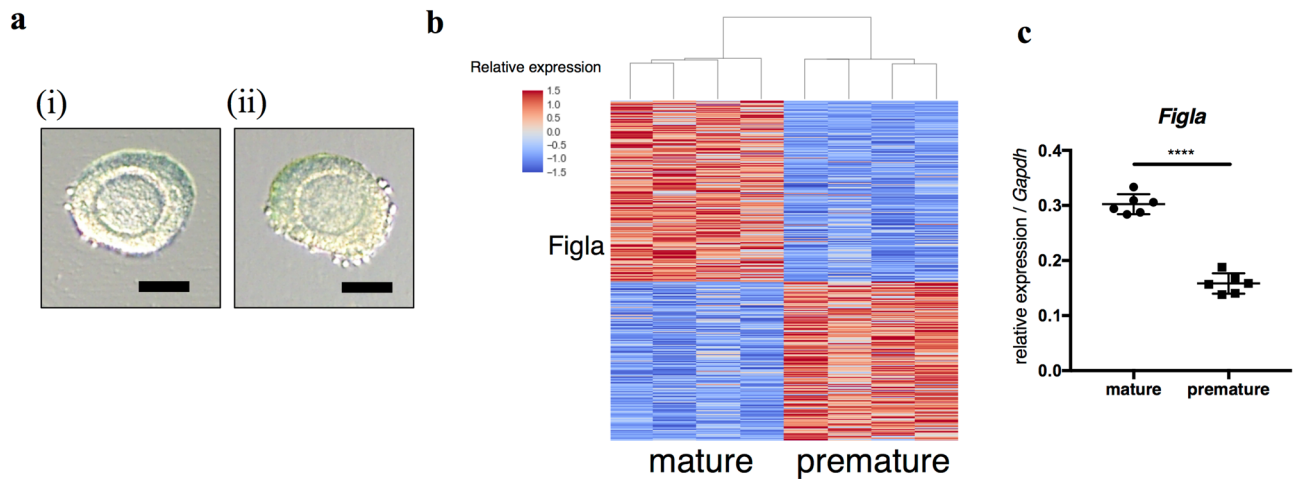


Figure 1. Differentially expressed genes in secondary follicle oocytes between mature and premature mice. (a) Representative pictures of the secondary follicles of (i) a mature mouse and (ii) premature mouse. Scale bars, 50 μm . (b) Heatmap of differentially expressed genes (DEGs, \log_2 fold change > 0.5 , false discovery rate (FDR) < 0.01). Four samples from mature and premature mice were compared. (c) Expression levels of *Figla* in the secondary follicle oocytes of mature mice and premature mice by qRT-PCR (n = 6, in each group).

Results

Comparative transcriptomic analysis of secondary follicle oocytes between mature and premature mice. Morphologically equivalent normal secondary follicles were collected from mature and premature mice (Fig. 1a). The gene expression profiles of secondary follicle oocytes were compared between mature and premature mice by RNA sequencing. Follicles collected from one mouse comprised one sample and four samples were compared. Using DESeq2 (PMID: 25516281), defining differentially expressed genes (DEGs) as those with FPKM > 1 in at least one sample, \log_2 fold change > 0.5 , and false discovery rate (FDR) < 0.01 , there were 1368 DEGs, of which 728 and 640 were up-regulated in mature and premature mice, respectively (Fig. 1b, S1). Among them, we identified a germ cell-specific transcription factor with the gene ontology term “oogenesis”, which was *Figla* (Fig. 1c). The top 15 canonical pathways of DEGs by an Ingenuity Pathway Analysis (IPA) showed that the oxidative stress response and PI3K signaling were up-regulated in mature mice (Table 1, positive z-score), while RhoGDI signaling was up-regulated in premature mice (Table 1, negative z-score). A gene ontology analysis revealed that glutathione and lipid metabolic processes were up-regulated in mature mice (Table S1-1), while cAMP metabolic process was up-regulated in premature mice (Table S1-2).

In vitro follicle culture and siRNA microinjection. When secondary follicles were cultured for 12 days using the in vitro culture method selected in the present study, no significant differences were observed in the diameter of follicles between mature and premature mice (Figure S2). Negative control siRNA (siRNA with no silencing effects) was microinjected into the oocytes of secondary follicles with subsequent culturing. No significant differences were observed in follicle diameters between no injection follicles and control follicles after 12 days of culture in both mature and premature mice (Fig. 2).

In vitro culture of si-*Figla* follicles. Two *Figla* siRNAs (1# and 2#) were prepared and microinjected into the oocytes of secondary follicles. After an incubation, oocytes of both si-*Figla*1# and si-*Figla*2# follicles showed the significantly weaker expression of *Figla* than control follicles (Fig. 3a). Three groups of secondary follicles, which were si-*Figla*1#, si-*Figla*2#, and control, were prepared for mature and premature mice, respectively. No significant differences were noted in the diameters of secondary follicles before culture between the groups for mature and premature mice (Fig. 3b,c). After 12 days of in vitro culture, the follicle diameters of si-*Figla*1# ($364.7 \pm 100.4 \mu\text{m}$, n = 25) and si-*Figla*2# ($276.2 \pm 162.8 \mu\text{m}$, n = 25) in mature mice were significantly smaller than that in the control ($452.1 \pm 123.2 \mu\text{m}$, n = 25) (Fig. 3b,d). In contrast, the follicle diameters of si-*Figla*1# ($495.8 \pm 113.2 \mu\text{m}$, n = 24) and si-*Figla*2# ($453.2 \pm 117.4 \mu\text{m}$, n = 25) in premature mice were not significantly different from that in the control ($508.0 \pm 110.5 \mu\text{m}$, n = 26) (Fig. 3c,d). Three independent experiments were performed with similar results.

Downstream genes of *Figla* in secondary follicles and neonatal ovaries. In order to investigate the downstream genes of *Figla* in secondary follicles, secondary follicles collected from four mice were combined and randomly distributed to si-*Figla*1#, si-*Figla*2#, and control. After a 48-hr incubation, follicles were denuded to obtain oocytes for a gene expression analysis. Four samples for each were prepared. Gene expression profiles were compared between si-*Figla*1# and control and between si-*Figla*2# and control using DESeq2. Based on the definition of DEGs as those with FPKM > 1 for at least one sample and FDR < 0.1 , 306 genes were up-regulated and 661 were down-regulated in these two si-*Figlas* (Fig. 4a). A pathway analysis by IPA was performed using

| Ingenuity canonical pathways | p value | Ratio ^a | z-score ^b | Genes ^c |
|---|----------|--------------------|----------------------|--|
| Signaling by Rho family GTPases | 1.05E-07 | 0.139 | 1.8 | Acta2, Arhgef17 , Arhgef4, Arhgef5 , Baiap2 , Cdc42ep1 , Cdh8, Ezr , Fnbp1 , Fos , Gnat2, Gnb11, Gnb5 , Gng3, Itga5, Jun , Map3k20 , Map3k21 , Mras , Nfkb2 , Pak3 , Pi4ka , Pip5k1b , Pkn1 , Prkci, Prkcz , Rac3 , Rhobtb1, Rnd1 , Rnd2 , Septin12, Septin2 |
| IL-8 signaling | 3.80E-07 | 0.145 | 1.964 | Braf , Ccnd2 , Ccnd3 , Cstb , Egf, Fnbp1 , Fos , Gnb11, Gnb5 , Gng3, Gpld1 , Hmox1, Itgav , Jun , Lasp1 , Mpo, Mras , Pld2 , Prkci, Prkcz , Rac3 , Rasd1 , Rasd2 , Rhobtb1, Rnd1 , Rnd2 , Tek, Vasp , Vegfa |
| Tec kinase signaling | 3.16E-06 | 0.146 | 0.243 | Acta2, Btk, Fnbp1 , Fos , Frk, Gnat2, Gnb11, Gnb5, Gng3, Gtf2i , Itga5, Mras , Nfkb2 , Pak3 , Prkci, Prkcz , Rac3 , Rhobtb1, Rnd1 , Rnd2 , Stat3 , Tnfrsf21 , Vav3 |
| Gaq signaling | 5.50E-06 | 0.146 | 0.775 | Adra1b , Btk, Fnbp1 , Gnb11, Gnb5 , Gng3, Gpld1 , Grk2 , Hmox1, Mras , Nfatc2 , Nfkb2 , Nfkbia , Nfkbid , Plcb1 , Pld2 , Ppp3ca , Prkci, Prkcz , Rac3 , Rhobtb1, Rnd1 , Rnd2 |
| NRF2-mediated oxidative stress response | 1.23E-05 | 0.132 | 1.291 | Acta2, Cat , Cbr1 , Dnajb1 , Dnajb14 , Dnajb2 , Erp29 , Fos , Ftl , Gsr , Gstm1 , Gsto1 , Herpud1 , Hmox1, Jun , Junb , Keap1 , Mras , Nqo2 , Prdx1 , Prkci, Prkcz , Rasd1 , Rasd2 |
| PI3K signaling in B Lymphocytes | 2.34E-05 | 0.145 | 1 | Btk, Card10 , Cd81 , Fos , Inpp5d , Jun , Mras , Nfatc2 , Nfkb2 , Nfkbia , Nfkbid , Plcb1 , Plce1 , Plekha2 , Ppp3ca , Prkci, Prkcz , Rasd1 , Rasd2 , Vav3 |
| Relaxin signaling | 2.57E-05 | 0.14 | 2.309 | Braf , Fos , Gnat2, Gnb11, Gnb5 , Gng3, Gucy1a1 , Gucy2c , Jun , Mras , Nfkb2 , Nfkbia , Nfkbid , Nos2 , Pde10a , Pde1a , Pde1b , Pde1c , Prkcz , Smarcc2 , Vegfa |
| TNFR1 signaling | 3.47E-05 | 0.22 | 1.508 | Casp8 , Fos , Jun , Naip1 , Nfkb2 , Nfkbia , Nfkbid , Pak3 , Ripk1 , Tradd |
| Pyrimidine ribonucleotides de novo biosynthesis | 5.75E-05 | 0.227 | 1.265 | Ak7 , Cad , Cmpk2 , Ctps2 , Entpd1 , Nme2 , Nme3 , Nme4 , Slc25a42 , Smarca1 |
| RhoGDI signaling | 0.000132 | 0.122 | -0.775 | Acta2, Arhgef17 , Arhgef4, Arhgef5 , Cdh8, Ezr , Fnbp1 , Gnat2, Gnb11, Gnb5 , Gng3, Itga5, Mras , Pak3 , Pi4ka , Pip5k1b , Rac3 , Rhobtb1, Rnd1 , Rnd2 |
| Axonal guidance signaling | 0.000158 | 0.0909 | N/A | Adam22, Adamts3, Baiap2 , Bmp5 , Bmp7 , Efn1 , Efnb2 , Egf, Epha10, Epha4, Fzd5 , Gnat2, Gnb11, Gnb5 , Gng3, Itga5, Mmp17 , Mras , Nfatc2 , Nrp1 , Pak3 , Pdgfra , Pfn2 , Plcb1 , Plce1 , Plxnc1 , Ppp3ca , Prkci, Prkcz , Rac3 , Rasd1 , Rasd2 , Rnd1 , Rtn4r , Sema3a , Sema3b , Sema4c , Sema6a , Stk36 , Tubb2a , Vasp , Vegfa |
| Pyrimidine ribonucleotides interconversion | 0.000219 | 0.214 | 1 | Ak7 , Cmpk2 , Ctps2 , Entpd1 , Nme2 , Nme3 , Nme4 , Slc25a42 , Smarca1 |
| Molecular mechanisms of cancer | 0.000240 | 0.0946 | N/A | Arhgef17 , Arhgef4, Arhgef5 , Bmp5 , Bmp7 , Braf , Casp8 , Ccnd2 , Ccnd3 , Cdk15 , Ctnna2 , Fnbp1 , Fos , Fzd5 , Gab1 , Gab2 , Gnat2, Itga5, Jun , Lef1 , Mras , Naip , Nfkb2 , Nfkbia , Nfkbid , Pak3 , Plcb1 , Prkci, Prkcz , Rac3 , Rasd1 , Rasd2 , Rhobtb1, Rnd1 , Rnd2 , Stk36 |
| Endothelin-1 signaling | 0.000251 | 0.117 | 0.447 | Abhd3 , Braf , Casp8 , Fos , Gab1 , Gnat2, Gpld1 , Gucy1a1 , Gucy2c , Hmox1, Jun , Mras , Nos1 , Nos2 , Plcb1 , Plce1 , Pld2 , Prkci, Prkcz , Rasd1 , Rasd2 , Shc3 |
| Regulation of actin-based motility by Rho | 0.000288 | 0.149 | 1.155 | Acta2, Baiap2 , Fnbp1 , Itga5, Pak3 , Pfn2 , Pi4ka , Pip5k1b , Rac3 , Rhobtb1, Rnd1 , Rnd2 |

Table 1. Top 15 canonical pathways of differentially expressed genes between secondary follicle oocytes of mature and premature mice. *N/A* not available. ^aRatio of listed genes found in each pathway over the total number of genes in that pathway. ^bz-score positive when pathways are up-regulated in mature mice and negative when pathways are up-regulated in premature mice. ^cGenes in bold are up-regulated in mature mice, while genes in normal font are up-regulated in premature mice.

these DEGs (Table 2). A positive z-score indicates pathways down-regulated in si-*Figla* = pathways expected to be up-regulated by *Figla*, whereas a negative z-score indicates pathways up-regulated in si-*Figla* = pathways expected to be down-regulated by *Figla*. In the top 15 canonical pathways, stem cell signaling (Mouse Embryonic Stem Cell Pluripotency and Wnt/ β -catenin Signaling^{13,14}) and estrogen receptor signaling were expected to be down-regulated by *Figla*, while VDR/RXR activation was expected to be up-regulated.

To analyze downstream genes of *Figla* in neonatal ovaries (primordial follicle formation), we obtained RNA sequencing data from a previous study¹⁵ that compared gene expression in neonatal ovaries between *Figla*_null mice and controls (GSE 139966) (Fig. 4b). In a similar analysis in the present study, DEGs were obtained and a pathway analysis by IPA was performed (Table S2-1). A positive z-score indicates pathways down-regulated in *Figla*_null mice = pathways expected to be up-regulated by *Figla*, whereas a negative z-score indicates pathways up-regulated in *Figla*_null mice = pathways expected to be down-regulated by *Figla*. Stem cell signaling (Mouse Embryonic Stem Cell Pluripotency) was expected to be down-regulated by *Figla*. The GO analysis revealed that genes down-regulated in *Figla*_null mice (= genes expected to be up-regulated by *Figla*) included the DNA repair system and meiotic cell cycle (Table S2-2) as previously reported¹⁵, whereas genes up-regulated in *Figla*_null mice (= genes expected to be down-regulated by *Figla*) included responses to estrogen (Table S2-3).

Among *Figla* downstream genes, relative expression levels of *Gsr* and *Fancc* (genes related to oxidative stress response), which were expected to be up-regulated by *Figla*, were significantly higher in mature mice than premature mice, whereas those of *Mmp2* and *Hmox1* (genes related to estrogen signaling) and *Rnf43* and *Bicc1* (genes related to stem cell signaling), which were expected to be down-regulated by *Figla*, were significantly lower in mature mice than premature mice (Figure S3).

Discussion

Among the genes whose expression varied between the secondary follicle oocytes of mature and premature mice, *Figla*, a germ cell-specific transcription factor, was herein identified as a gene associated with oogenesis, suggesting a role in follicle growth, at least in the secondary follicles of mature mice. Furthermore, *Figla* may function differently in mature and premature mice according to differences in its expression level. A previous study reported the critical involvement of *Figla* in early oogenesis (primordial follicle formation), as shown by the loss of primordial follicles in the neonatal ovaries of *Figla*_null mice¹⁶. However, *Figla* was also found to

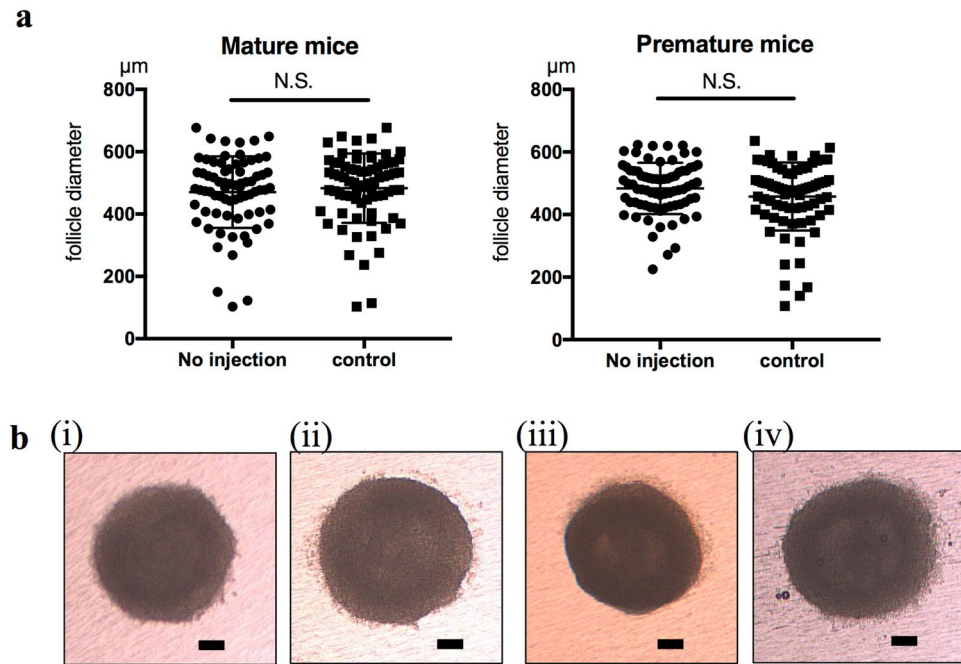


Figure 2. Follicle growth in no injection and control groups. (a) The diameter of cultured follicles did not significantly differ between follicles in the no injection group and negative control siRNA-injected follicles in both mature (left) and premature (right) mice. The diameters of mature mice follicles were $470.4 \pm 114.8 \mu\text{m}$ ($n = 73$) in the no injection group and $482.8 \pm 111.3 \mu\text{m}$ ($n = 74$) in the control group. The diameters of premature mouse follicles were $483.8 \pm 81.99 \mu\text{m}$ ($n = 75$) in the no injection group and $457.5 \pm 108.7 \mu\text{m}$ ($n = 76$) in the control group. (b) Representative pictures of follicles after 12 days of in vitro culture. (i) Mature mouse follicle of the no injection group, (ii) mature mouse follicle of the control group, (iii) premature mouse follicle of the no injection group, and (iv) premature mouse follicle of the control group. Scale bars, $100\mu\text{m}$.

be expressed in secondary follicles, which are in a later follicle developmental stage than primordial follicles, and in the ovaries of mature mice¹⁷. Although *Figla* appears to play an interesting role in secondary follicles, definitive evidence has not yet been obtained because of the difficulties associated with observing its function in *Figla* null mice due to the disappearance of primordial follicles in the neonatal period¹⁶. In the present study, we examined the function of *Figla* in secondary follicles using a microinjection of *Figla* siRNA followed by an in vitro culture of injected follicles and a comparative transcriptomic analysis. The results obtained indicated that *Figla* was involved in follicle growth in mature mice, but exerted negligible effects on that in premature mice with its possible downstream target genes.

The mechanisms underlying the different effects of *Figla* between the secondary follicles of mature and premature mice have not yet been elucidated. This is mainly due to differences in its expression levels. In premature mice, its expression level may be under the threshold¹⁸ with a negligible contribution to follicle growth, which is compensated for by unknown regulating factors. RhoA signaling^{19,20} (potentially down-regulated by *Figla*) with its adequate control by RhoGDI signaling²¹ (up-regulated in premature mice) may be one candidate. *Figla* may also contribute to the growth of the secondary follicles of premature mice when its expression is replenished by a microinjection of *Figla* mRNA²² or a plasmid²³; however, technical difficulties have been associated with appropriately adjusting its intracellular distribution^{15,24} and expression level. One possible explanation for the different expression levels of follicle growth-regulating genes such as *Figla* between pre-/mature mice is the presence of two distinct populations of primordial follicles^{25,26} distributed in the medulla and cortex, respectively. The growing follicles (e.g., secondary and pre-antral follicles) present in premature mice are mainly supplied by the first population, whereas those in mature mice are mainly derived from the second population. These two distinct populations of primordial follicles may be conserved in mammals, including humans¹², and, thus, the factors regulating folliculogenesis may also differ between the human follicles of pre-pubertal and adult females.

Figla has two different functions in two different settings; primordial follicle formation in neonatal ovary as previously described^{15,27} and secondary follicle growth promotion in mature mice as shown in the present study. In order to investigate how *Figla* downstream genes overlap and differ in these two different settings, we both elucidated down stream genes of *Figla* in neonatal ovaries and secondary follicle oocytes of mature mice (Fig. 4b,c). Stem cell signaling (Mouse Embryonic Stem Cell Pluripotency and Wnt/ β -catenin Signaling^{13,14}) was inhibited by *Figla* in both secondary follicles and neonatal ovaries, suggesting that *Figla* releases oocytes from an undifferentiated state, thereby promoting cell differentiation during early oogenesis and secondary follicle growth. Estrogen signaling was also down-regulated by *Figla* in secondary follicles and neonatal ovaries. A previous study reported that the ovaries of mature (9 weeks old) aromatase knockout mice showed follicles at each stage of development, from primordial to late antral follicles²⁸. Therefore, estrogen is not essential for

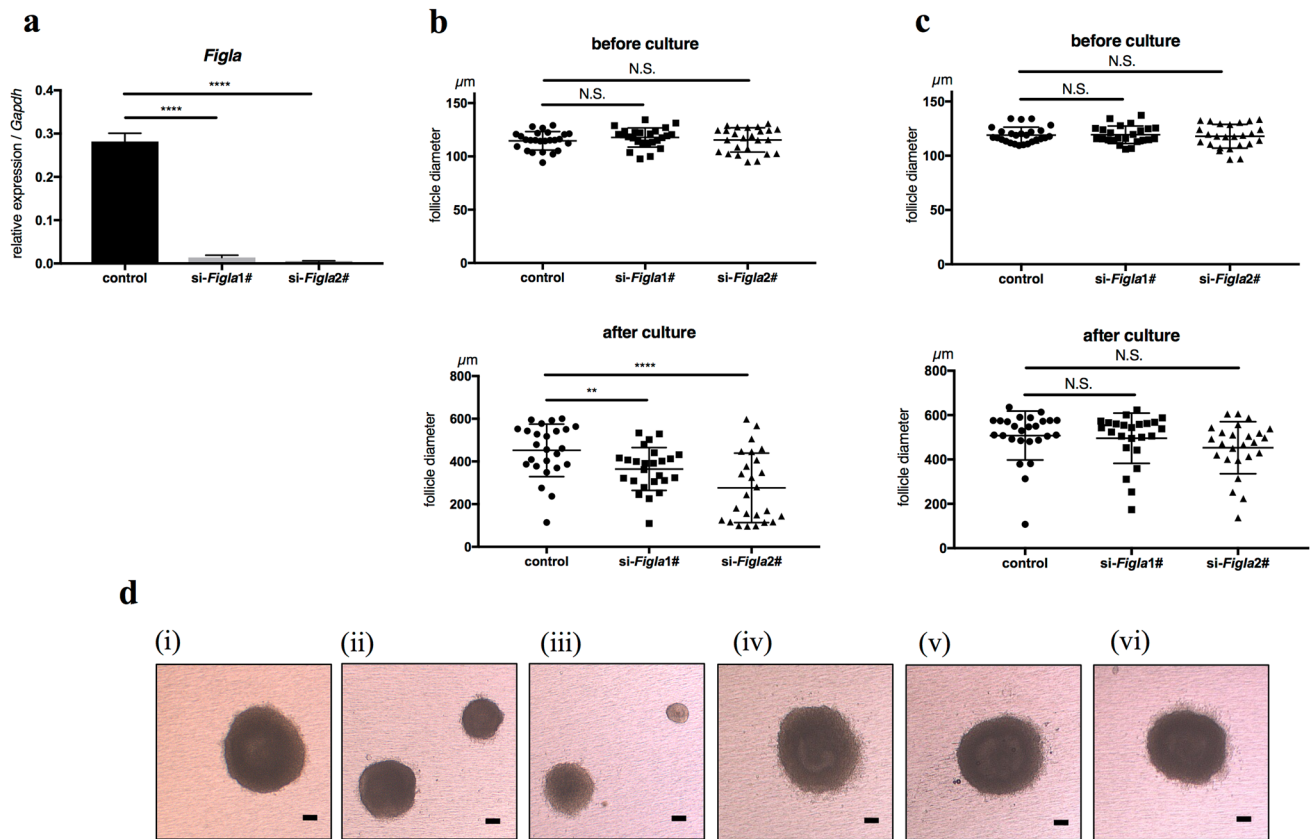


Figure 3. Reduced follicle growth of si-*Figla* in mature mice. **(a)** The expression of *Figla* was significantly weaker in si-*Figla* (1# left, 2# right) secondary follicle oocytes than in the control ($n=3$, for each group). **(b, c)** The diameters of follicles before culture (upper graph) and after 12 days of in vitro culture (lower graph) are shown. The diameter of si-*Figla* was significantly smaller than the control after culture in mature mice **(b)**, whereas no significant difference was observed in premature mice **(c)**. The diameters of mature mouse follicles before culture were $114.6 \pm 8.69 \mu\text{m}$ ($n=25$) in control, $117.8 \pm 8.98 \mu\text{m}$ ($n=25$) in si-*Figla*1#, and $115.4 \pm 11.35 \mu\text{m}$ ($n=25$) in si-*Figla*2#, whereas diameters after culture were $452.1 \pm 123.2 \mu\text{m}$ ($n=25$) in control, $364.7 \pm 100.4 \mu\text{m}$ ($n=25$) in si-*Figla*1#, and $276.2 \pm 162.8 \mu\text{m}$ ($n=25$) in si-*Figla*2#. The diameters of premature mice follicles before culture were $119.0 \pm 7.31 \mu\text{m}$ ($n=26$) in control, $119.4 \pm 8.07 \mu\text{m}$ ($n=24$) in si-*Figla*1#, and $117.9 \pm 11.0 \mu\text{m}$ ($n=25$) in si-*Figla*2#, whereas diameters after culture were $508.0 \pm 110.5 \mu\text{m}$ ($n=26$) in control, $495.8 \pm 113.2 \mu\text{m}$ ($n=24$) in si-*Figla*1#, and $453.2 \pm 117.4 \mu\text{m}$ ($n=25$) in si-*Figla*2#. **(d)** Representative pictures of follicles after 12 days of in vitro culture, (i)–(iii) mature mice, (iv)–(vi) premature mice, (i), (iv) control, (ii), (v) si-*Figla*1#, (iii), (vi) si-*Figla*2#. Scale bars, 100 μm .

the formation of secondary follicles²⁹, and it currently remains unclear whether it has any effects on secondary follicles. Additionally, since an estrogen stimulation during primordial follicle formation in the neonatal ovary was shown to impair follicle formation^{30,31}, an excessive estrogen stimulation in the secondary follicle may also impair follicle growth. These findings indicate that *Figla* promotes follicle formation by suppressing estrogen signaling in oocytes during early oogenesis, and also that the suppression of estrogen signaling in the secondary follicle may contribute to the appropriate regulation of follicle growth. VDR/RXR activation was up-regulated by *Figla* in secondary follicles, but not in neonatal ovaries. VDR is a nuclear receptor for vitamin D that promotes the transcription of its downstream target genes by forming heterodimers with RXR, the positive immunostaining of which has been reported in the secondary follicle oocytes of primates³². Studies on VDR knockout mice reported that primordial follicle formation during the neonatal state was not impaired, whereas follicles in developmental stages later than secondary follicles disappeared in the ovaries of 7-week-old mice³³, suggesting that *Figla* advanced secondary follicles to later stages of development by VDR/RXR activation, a function that may be characteristic of secondary follicles. However, it currently remains unclear how this function is characteristic of secondary follicles. *Figla* is one of the basic helix-loop-helix (bHLH) transcription factors¹⁷. The binding motif of *Figla*, called E-box (CANNTG), is common to bHLH transcription factors³⁴, and *Figla* functions with a cofactor called E12 when it regulates its downstream egg coat-coding genes, *Zp1,2,3*¹⁶. Similarly, VDR/RXR activation by *Figla* may be due to some cofactors or epigenetic modifications³⁵ that are characteristic of secondary follicles. Meiotic cell cycle was up-regulated by *Figla* in neonatal ovaries but not in secondary follicles. This correlates to early oogenesis that germ cells enter meiosis and arrest at the diplotene stage of the first meiotic prophase when primordial follicles are created until the resumption of meiosis is induced in fully grown oocytes³⁶.

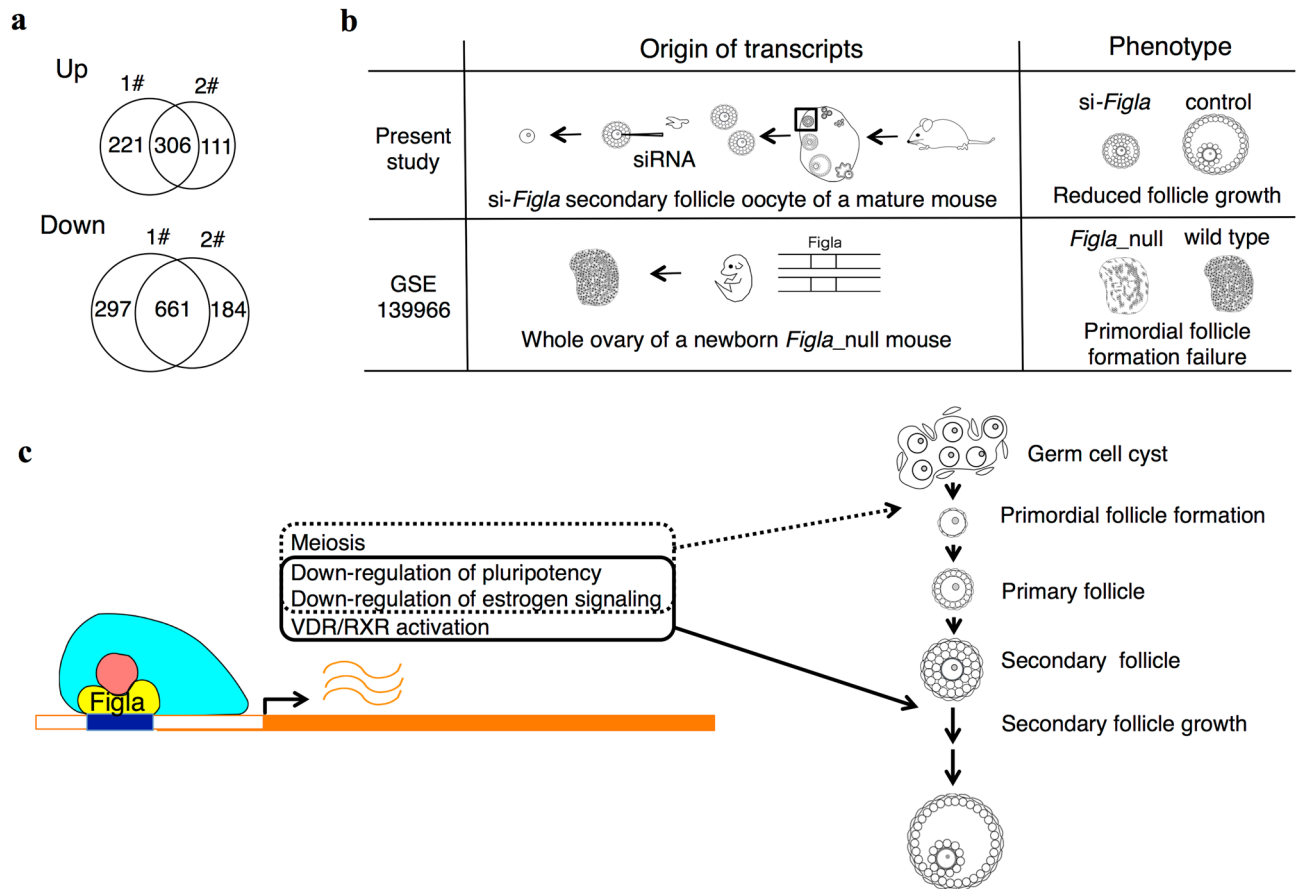


Figure 4. Pursuit of downstream genes of *Figla*. **(a)** Venn diagram of DEGs in two comparisons, si-*Figla*1# vs control (1#) and si-*Figla*2# vs control (2#). Four samples for each were compared. In total, 306 genes were up-regulated and 661 genes were down-regulated in these two si-*Figlas*. **(b)** Schematic of transcripts and phenotypes of the present study and GSE 139966. **(c)** Schematic of the hypothetical model of *Figla* functions in folliculogenesis. *Figla* may regulate the follicle growth of secondary follicles by down-regulating pluripotency and estrogen signaling and up-regulating VDR/RXR activation (solid line), whereas *Figla* may regulate primordial follicle formation through the activation of meiosis and down-regulation of pluripotency and estrogen signaling (dotted line).

Follicle growth dynamics has been studied using follicles obtained by juvenile individuals³⁷ unless there were specific reasons for not using them^{38, 39}. Interestingly, among differentially expressed genes of secondary follicle oocytes between pre-/mature mice, possible follicle growth regulating factors such as oxidative stress response^{40, 41}, PI3K signaling^{42, 43} and lipid metabolic process^{44, 45} (enriched in mature mice) and cAMP metabolic process^{46, 47} (enriched in premature mice) were included. In the present study, relative expression levels of some of *Figla* downstream genes were significantly different between secondary follicle oocytes of pre-/mature mice, supporting that secondary follicle growth in mature mice may be regulated in part by *Figla*. However, as folliculogenesis is a highly complex process⁴⁸ that requires appropriate set of genes to orchestrate its growth⁴⁹, there is a limitation for discussing it with a single transcription factor.

One of the genes responsible for primary ovarian insufficiency (POI) in humans is *FIGLA*^{50, 51}. Its suppression may cause POI not only through its well-known disorder in early oogenesis, but also in the subsequent follicle development failure of secondary follicles reported in the present study, which correlates with one of the typical ovarian histologies of POI patients, namely, normal-sized ovaries with partial follicular maturation⁵². Further investigations on *FIGLA* using human ovarian specimens are required to elucidate its relationship with follicle growth.

In conclusion, we herein showed for the first time that *Figla* may contribute to follicle growth in the secondary follicles of mature mice beyond its well-known function in early oogenesis through the down-regulation of stem cell signaling and estrogen signaling and up-regulation of VDR/RXR activation. These results will contribute to a better understanding of differences in folliculogenesis between premature and mature mice. A limitation of the present study is that it currently remains unclear whether the differences observed in secondary follicles between premature and mature mice are related to those between human follicles in pre-pubertal girls and adult women. Further studies using human-derived materials are needed to translate these results into clinical applications, eventually leading to the development of efficient in vitro culture systems for secondary follicles that are optimal for pre-pubertal and adult females.

| Ingenuity canonical pathways | p value | Ratio ^a | z-score ^b | Genes ^c |
|---|----------|--------------------|----------------------|---|
| Molecular mechanisms of cancer | 1.32E-09 | 0.11 | N/A | Abl1, Adcy6, Apc, Aph1c , Arhgef11, Arhgef18, Atm, Atr, Birc3 , Brca1, Cbl, Ccne2 , Cdc25b, Cdk12, Cdk5 , Cdkn2b , Crebbp, Ctnnd1, Ep300, Fzd5 , Fzd7, Lrp1, Lrp5, Lrp6, Mapk11 , Pak2, Pik3c2a, Prkd3, Prkdc, Ptch1, Raf1 , Rhobtb1 , Rhoh , Rras2 , Smad3, Smad5, Sos1, Tcf4, Tgfb2 , Wnt7a , Wnt8a , Xiap, Zbtb17 |
| Actin cytoskeleton signaling | 1.78E-05 | 0.106 | -1.414 | Actr2, Apc, Arhgap24, Bcar1 , Diaph3, Fgf8 , Flna, Iqgap3, Mprrip, Myh11, Myh9, Pak2, Pdgbf , Pik3c2a, Raf1 , Rras2 , Sos1, Ssh2, Tln1, Tln2, Trio, Ttn, Vav2 |
| Estrogen receptor signaling | 4.47E-05 | 0.0884 | -3.528 | Adcy6, Cacna1d, Crebbp, Eif2b4 , Ep300, Igf1r, Igf2r, Lepr, Med12, Med12l, Med13, Med13l, Med14, Mprrip, Mtor, Ncoa1, Ncoa2, Ncoa3, Ncor2, Nr3c1, Pelp1, Pik3c2a, Prkd3, Prkdc, Raf1 , Rras2 , Sos1, Tbl1xr1, Thrsp3 |
| Mouse embryonic stem cell pluripotency | 5.13E-05 | 0.136 | -1.387 | Apc, Crebbp, Fzd5 , Fzd7, Id2 , Il6st, Mapk11 , Pik3c2a, Raf1 , Rras2 , Smad5, Sos1, Tcf4, Xiap |
| Wnt/ β -catenin signaling | 5.37E-05 | 0.11 | -2.357 | Apc, Appl1, Bcl9, Crebbp, Csnk2a1, Ep300, Fzd5 , Fzd7, Kremen1, Lrp1, Lrp5, Lrp6, Nr5a2, Ppp2r1b , Sox15 , Tcf4, Tgfb2 , Wnt7a , Wnt8a |
| Cell cycle: G2/M DNA damage checkpoint regulation | 0.000107 | 0.184 | -0.707 | Abl1, Atm, Atr, Brca1, Cdc25b, Ep300, Plk1 , Prkdc, Trip12 |
| NER Pathway | 0.0002 | 0.126 | -1.732 | Cops4 , Cops8, Ddb1, Ep300, Ercc4, Gps1 , Lig3, Pole, Polr2a, Polr2d , Rfc4 , Rnf111, Rpa1 |
| Glioblastoma multiforme signaling | 0.000282 | 0.103 | 1 | Apc, Fzd5 , Fzd7, Igf1r, Itpr1, Mtor, Pdgbf , Pik3c2a, Raf1 , Rhobtb1 , Rhoh , Rras2 , Sos1, Tsc1, Tsc2, Wnt7a , Wnt8a |
| Role of CHK proteins in cell cycle checkpoint control | 0.000355 | 0.158 | -0.816 | Atm, Atr, Brca1, Mdc1, Plk1 , Ppp2r1b , Rfc4 , Rpa1 , Tlk1 |
| Integrin signaling | 0.000794 | 0.0892 | -1.213 | Abl1, Actr2, Arf1 , Arf3, Bcar1 , Itgav, Mprrip, Pak2, Pdgbf , Pik3c2a, Pikfyve, Raf1 , Rhobtb1 , Rhoh , Rras2 , Sos1, Tln1, Tln2, Ttn |
| VDR/RXR activation | 0.000933 | 0.128 | 1.414 | Csnk2a1, Ep300, Lrp5, Ncoa1, Ncoa2, Ncoa3, Ncor2, Prkd3, Rxra, Tgfb2 |
| RhoA signaling | 0.00112 | 0.106 | -2.309 | Abl2, Actr2, Arhgef11, Cit, Igf1r, Mprrip, Pi4ka, Pikfyve, Pip4k2c, Rapgef2, Rapgef6, Septin12, Ttn |
| Glioma signaling | 0.00129 | 0.109 | -1.265 | Abl1, Camk1d, Cdkn2b , Igf1r, Igf2r, Mtor, Pdgbf , Pik3c2a, Prkd3, Raf1 , Rras2 , Sos1 |
| TGF- β signaling | 0.00138 | 0.115 | -0.333 | Crebbp, Ep300, Mapk11 , Raf1 , Rnf111, Rras2 , Smad3, Smad5, Sos1, Tgfb2 , Tgif1 |
| ATM signaling | 0.00148 | 0.113 | -1.265 | Abl1, Atm, Atr, Brca1, Crebbp, Herc2, Mapk11 , Mdc1, Ppp2r1b , Tlk1 |

Table 2. Top 15 canonical pathways of differentially expressed genes between secondary follicles with *Figla* suppression and control. ^aRatio of listed genes found in each pathway over the total number of genes in that pathway. ^bz-score positive when pathways are down-regulated in the *Figla* siRNA-injected group (= pathways are expected to be up-regulated by *Figla*), while negative when pathways are up-regulated in the *Figla* siRNA-injected group (= pathways are expected to be down-regulated by *Figla*). ^cGenes in bold are down-regulated in the *Figla* siRNA-injected group (= genes expected to be up-regulated by *Figla*), while genes in normal font are up-regulated in the *Figla* siRNA-injected group (= genes expected to be down-regulated by *Figla*).

Materials and methods

Preparation and follicle collection. ICR strain mice (CLEA Japan, Inc.) were housed in a temperature- and light-controlled environment (12L:12D) and provided with food and water *ad libitum*. Animals were maintained in accordance with the guidelines of the Science Council of Japan, and all experiments were approved by the Institutional Animal Care and Use Committee of Kyoto University (Med Kyo 15568). This study conformed to the ARRIVE guidelines⁵³. Ovaries were dissected from mature (8 weeks old) and premature (10–12 days old) female mice. Secondary follicles were mechanically isolated from the ovaries using a 27G needle in L15 medium (Gibco 11415064, Thermo Fisher, US) containing 0.1% DNaseI (Sigma-Aldrich, US). Secondary follicles were selected according to the following morphological criteria⁵⁴: two to three layers of somatic cells, the central position of the oocyte within the follicle, and a high density of somatic cells (Fig. 1a). Secondary follicles were then treated with in vitro growth (IVG) medium, which is MEMa medium (Gibco 12571-063, Thermo Fisher) supplemented with 1X insulin/transferrin/selenium solution (ITS 100X stock, Wako, Japan), 100 IU/ml penicillin & streptomycin (PenStrep, Gibco, Thermo Fisher), 5% fetal bovine serum (Sigma-Aldrich), and 0.03 IU/ml of FSH (Gonal-f 75 units, Merck Biopharma, Japan) for 1 hr.

Preparation of siRNA reagent. All siRNA reagents were purchased from Thermo Fisher. *Figla* siRNA1# (Silencer Select Pre-Designed siRNA s77365), *Figla* siRNA2# (s77366), and negative control siRNA (Silencer Negative Control No. 1 siRNA) were used. The concentration of each reagent for injection was adjusted to 5 μ M with RNase-free water.

Microinjection and follicle culture. Secondary follicles collected from four mice were combined and randomly distributed to the negative control siRNA and *Figla* siRNA injection groups, and siRNA was microinjected into the oocytes of secondary follicles as previously reported⁵⁴. Specifically, intact follicles were placed in M2 medium (M-7167, Sigma-Aldrich) droplets prepared in a microinjection chamber. Injection needles were prepared using a puller (Model P-97, Sutter instrument, US) with the following protocol: heat = 655, pull = 85, vel = 120, del = 110, pressure 300. An injection needle was filled with siRNA reagent and placed on a manipulator (ONM-2D, Narishige, Japan) set on an inverted microscope (IX71, Olympus, Japan). Follicles were held, the injection needle penetrated the cytoplasm of the oocyte, and siRNA reagent was injected with one shot of the FemtoJet (Eppendorf, Germany). After the microinjection, 12–13 follicles were placed on collagen-coated

inserts (Transwell COL #3493, Corning, US) set in 12-well plates containing 2 ml of IVG medium in each well and incubated for 12 days (37 °C, 5% CO₂) as previously described⁵⁵ with slight modifications. The medium around the filter was changed every 4 days.

Isolation of oocytes and RNA extraction. Oocytes were isolated from secondary follicles with the agitation of follicles suspended in 400 µl of MEMα medium supplemented with 0.25% collagenase (Wako) for five minutes in 1.5-ml silicon-coated tubes using a microtube mixer set in the incubator (37 °C, 5% CO₂). Total RNA was extracted using a Nucleo Spin RNA XS (Macherey–Nagel, Germany).

qRT-PCR. cDNA samples for qRT-PCR were prepared by applying the total RNA of oocytes to the Super Script IV VILO Master Mix (Thermo Fisher). qRT-PCR was performed using the THUNDERBIRD SYBR qPCR Mix (TOYOBO, Japan) and Applied Biosystems StepOnePlus (Thermo Fisher) (Table S3). The relative expression levels of each transcript were normalized by the 2-ΔΔCt method for endogenous GAPDH expression.

For library preparation. cDNA products were generated and amplified by applying 1 ng of total RNA per sample to the SMART-Seq v4 Ultra Low Input RNA Kit for Sequencing (Clontech Laboratories, Inc., US), and cDNA products were quantified and evaluated using a bioanalyzer (Agilent, US) and the High Sensitivity DNA Kit (Agilent). Paired-end cDNA libraries were generated using the Nextera XT DNA Library Prep Kit (Illumina, US) by applying 0.2 ng of cDNA for each sample, and sequenced for 150 base pairs by HiSeq2500 (Illumina) for the secondary follicle oocytes of mature and premature mice and by NovaSeq6000 (Illumina) for *Figla* and control siRNA-injected secondary follicle oocytes. Raw sequencing reads were trimmed for adapter sequences and quality using Trim Galore (PMID:-, http://www.bioinformatics.babraham.ac.uk/projects/trim_galore/). The resulting sequence reads were aligned to the mouse reference genome of GRCm38/mm10 using STAR (PMID: 23104886). The mapped reads were normalized using RSEM (PMID: 21816040) to calculate expression values per gene as fragments per kilobase of transcript per million (FPKM).

Differential gene expression, gene ontology, and pathway analyses. A differential expression analysis was performed using DESeq2 (PMID: 25516281). In comparisons of mature/premature mice, genes with FPKM > 1 for at least one sample, FDR < 0.01, and log₂ fold change > 0.5 were considered as differential expressed genes (DEGs). In the comparison of si-*Figla* secondary follicle oocytes with controls, genes with FPKM > 1 for at least one sample and FDR < 0.1 were considered as DEGs. A pathway analysis was performed using Ingenuity Pathway Analysis (IPA) Software (content version: 52912811, Qiagen, Germany) and a gene ontology analysis was conducted using DAVID⁵⁶.

Statistical analysis. Data are presented as the mean ± S.D. unless otherwise noted. The two-tailed Student's *t*-test was used to calculate *p* values. *p* < 0.05 was considered to be significant. Significance levels are symbolized by the following corresponding conditions: **p* < 0.05, ***p* < 0.01, ****p* < 0.001, and *****p* < 0.0001.

Received: 4 February 2021; Accepted: 20 April 2021

Published online: 10 May 2021

References

- Dolmans, M. M. *et al.* Reimplantation of cryopreserved ovarian tissue from patients with acute lymphoblastic leukemia is potentially unsafe. *Blood* **116**, 2908–2914. <https://doi.org/10.1182/blood-2010-01-265751> (2010).
- Donnez, J. & Dolmans, M. M. Fertility preservation in women. *N. Engl. J. Med.* **377**, 1657–1665. <https://doi.org/10.1056/NEJMr1614676> (2017).
- Anderson, R. A., McLaughlin, M., Wallace, W. H., Albertini, D. F. & Telfer, E. E. The immature human ovary shows loss of abnormal follicles and increasing follicle developmental competence through childhood and adolescence. *Hum. Reprod.* **29**, 97–106. <https://doi.org/10.1093/humrep/det388> (2014).
- Liu, X. *et al.* A comparative study on transforming growth factor-beta and activin A for preantral follicles from adult, immature, and diethylstilbestrol-primed immature mice. *Endocrinology* **140**, 2480–2485. <https://doi.org/10.1210/endo.140.6.6827> (1999).
- Stiff, M. E., Bronson, F. H. & Stetson, M. H. Plasma gonadotropins in prenatal and prepubertal female mice: disorganization of pubertal cycles in the absence of a male. *Endocrinology* **94**, 492–496. <https://doi.org/10.1210/endo-94-2-492> (1974).
- Caligioni, C. S. Assessing reproductive status/stages in mice. *Curr. Protoc. Neurosci.* **Appendix 4**, Appendix 4I. <https://doi.org/10.1002/0471142301.nsa04is48> (2009).
- Kanda, S. Evolution of the regulatory mechanisms for the hypothalamic–pituitary–gonadal axis in vertebrates-hypothesis from a comparative view. *Gen. Comp. Endocrinol.* **284**, 113075. <https://doi.org/10.1016/j.yggen.2018.11.014> (2019).
- Xiao, S. *et al.* In vitro follicle growth supports human oocyte meiotic maturation. *Sci. Rep.* **5**, 17323. <https://doi.org/10.1038/srep17323> (2015).
- McLaughlin, M., Albertini, D. F., Wallace, W. H. B., Anderson, R. A. & Telfer, E. E. Metaphase II oocytes from human unilaminar follicles grown in a multi-step culture system. *Mol. Hum. Reprod.* **24**, 135–142. <https://doi.org/10.1093/molehr/gay002> (2018).
- Pan, H., O'Brien, M. J., Wigglesworth, K., Eppig, J. J. & Schultz, R. M. Transcript profiling during mouse oocyte development and the effect of gonadotropin priming and development in vitro. *Dev. Biol.* **286**, 493–506. <https://doi.org/10.1016/j.ydbio.2005.08.023> (2005).
- Zhang, Y. *et al.* Transcriptome landscape of human folliculogenesis reveals oocyte and granulosa cell interactions. *Mol. Cell* **72**, 1021–1034.e1024. <https://doi.org/10.1016/j.molcel.2018.10.029> (2018).
- Peters, H., Byskov, A. G., Himelstein-Braw, R. & Faber, M. Follicular growth: the basic event in the mouse and human ovary. *J. Reprod. Fertil.* **45**, 559–566. <https://doi.org/10.1530/jrf.0.0450559> (1975).

13. Miki, T., Yasuda, S.-Y. & Kahn, M. Wnt/ β -catenin signaling in embryonic stem cell self-renewal and somatic cell reprogramming. *Stem Cell Rev. Rep.* **7**, 836–846. <https://doi.org/10.1007/s12015-011-9275-1> (2011).
14. Sokol, S. Y. Maintaining embryonic stem cell pluripotency with Wnt signaling. *Development* **138**, 4341. <https://doi.org/10.1242/dev.066209> (2011).
15. Wang, Z., Liu, C. Y., Zhao, Y. & Dean, J. FIGLA, LHX8 and SOHLH1 transcription factor networks regulate mouse oocyte growth and differentiation. *Nucleic Acids Res.* **48**, 3525–3541. <https://doi.org/10.1093/nar/gkaa101> (2020).
16. Soyal, S. M., Amleh, A. & Dean, J. FIGalpha, a germ cell-specific transcription factor required for ovarian follicle formation. *Development* **127**, 4645–4654 (2000).
17. Liang, L., Soyal, S. M. & Dean, J. FIGalpha, a germ cell specific transcription factor involved in the coordinate expression of the zona pellucida genes. *Development* **124**, 4939–4947 (1997).
18. Co, A. D., Lagomarsino, M. C., Caselle, M. & Osella, M. Stochastic timing in gene expression for simple regulatory strategies. *Nucleic Acids Res.* **45**, 1069–1078. <https://doi.org/10.1093/nar/gkw1235> (2017).
19. Cheon, Y. P. *et al.* The role of RhoA in the germinal vesicle breakdown of mouse oocytes. *Biochem. Biophys. Res. Commun.* **273**, 997–1002. <https://doi.org/10.1006/bbrc.2000.3052> (2000).
20. Zhang, Y. *et al.* Small GTPase RhoA regulates cytoskeleton dynamics during porcine oocyte maturation and early embryo development. *Cell Cycle (Georgetown, Tex.)* **13**, 3390–3403. <https://doi.org/10.4161/15384101.2014.952967> (2014).
21. Dovas, A. & Couchman, J. R. RhoGDI: multiple functions in the regulation of Rho family GTPase activities. *Biochem. J.* **390**, 1–9. <https://doi.org/10.1042/BJ20050104> (2005).
22. Nashun, B. *et al.* Continuous histone replacement by Hira is essential for normal transcriptional regulation and de novo DNA methylation during mouse oogenesis. *Mol. Cell* **60**, 611–625. <https://doi.org/10.1016/j.molcel.2015.10.010> (2015).
23. Stein, P. Microinjection of plasmids into meiotically incompetent mouse oocytes. *Cold Spring Harbor Protoc.* **2009**, pdb.prot5135. <https://doi.org/10.1101/pdb.prot5135> (2009).
24. Orozco-Lucero, E. *et al.* Use of a lentiviral platform for subcellular localization of FIGLA, a key gene for female reproductive capacity. *Biol. Reprod.* **83**, 612–612. <https://doi.org/10.1093/biolreprod/83.s1.612> (2010).
25. Mork, L. *et al.* Temporal differences in granulosa cell specification in the ovary reflect distinct follicle fates in mice. *Biol. Reprod.* **86**, 37. <https://doi.org/10.1095/biolreprod.111.095208> (2012).
26. Zheng, W. *et al.* Two classes of ovarian primordial follicles exhibit distinct developmental dynamics and physiological functions. *Hum. Mol. Genet.* **23**, 920–928. <https://doi.org/10.1093/hmg/ddt486> (2014).
27. Joshi, S., Davies, H., Sims, L. P., Levy, S. E. & Dean, J. Ovarian gene expression in the absence of FIGLA, an oocyte-specific transcription factor. *BMC Dev. Biol.* **7**, 67. <https://doi.org/10.1186/1471-213X-7-67> (2007).
28. Fisher, C. R., Graves, K. H., Parlow, A. F. & Simpson, E. R. Characterization of mice deficient in aromatase (ArKO) because of targeted disruption of the cyp19 gene. *Proc. Natl. Acad. Sci. U. S. A.* **95**, 6965–6970. <https://doi.org/10.1073/pnas.95.12.6965> (1998).
29. Britt, K. L. *et al.* An age-related ovarian phenotype in mice with targeted disruption of the Cyp 19 (aromatase) gene*. *Endocrinology* **141**, 2614–2623. <https://doi.org/10.1210/endo.141.7.7578> (2000).
30. Chen, Y., Jefferson, W. N., Newbold, R. R., Padilla-Banks, E. & Pepling, M. E. Estradiol, progesterone, and genistein inhibit oocyte nest breakdown and primordial follicle assembly in the neonatal mouse ovary in vitro and in vivo. *Endocrinology* **148**, 3580–3590. <https://doi.org/10.1210/en.2007-0088> (2007).
31. Kezele, P. & Skinner, M. K. Regulation of ovarian primordial follicle assembly and development by estrogen and progesterone: endocrine model of follicle assembly. *Endocrinology* **144**, 3329–3337. <https://doi.org/10.1210/en.2002-0131> (2003).
32. Xu, J. *et al.* Vitamin D3 regulates follicular development and intrafollicular vitamin D biosynthesis and signaling in the primate ovary. *Front. Physiol.* <https://doi.org/10.3389/fphys.2018.01600> (2018).
33. Yoshizawa, T. *et al.* Mice lacking the vitamin D receptor exhibit impaired bone formation, uterine hypoplasia and growth retardation after weaning. *Nat. Genet.* **16**, 391–396. <https://doi.org/10.1038/ng0897-391> (1997).
34. Gordán, R. *et al.* Genomic regions flanking E-box binding sites influence DNA binding specificity of bHLH transcription factors through DNA shape. *Cell Rep.* **3**, 1093–1104. <https://doi.org/10.1016/j.celrep.2013.03.014> (2013).
35. Levo, M. & Segal, E. In pursuit of design principles of regulatory sequences. *Nat. Rev. Genet.* **15**, 453–468. <https://doi.org/10.1038/nrg3684> (2014).
36. Liang, C.-G., Su, Y.-Q., Fan, H.-Y., Schatten, H. & Sun, Q.-Y. Mechanisms regulating oocyte meiotic resumption: roles of mitogen-activated protein kinase. *Mol. Endocrinol.* **21**, 2037–2055. <https://doi.org/10.1210/me.2006-0408> (2007).
37. Eppig, J. J. & Schroeder, A. C. Capacity of mouse oocytes from preantral follicles to undergo embryogenesis and development to live young after growth, maturation, and fertilization in vitro. *Biol. Reprod.* **41**, 268–276. <https://doi.org/10.1095/biolreprod41.2.268> (1989).
38. Jee, B. C. *et al.* In vitro growth of mouse preantral follicles: effect of animal age and stem cell factor/insulin-like growth factor supplementation. *Clin. Exp. Reprod. Med.* **39**, 107–113. <https://doi.org/10.5653/cerm.2012.39.3.107> (2012).
39. Hirshfeld-Cytron, J. E. *et al.* Animal age, weight and estrus cycle stage impact the quality of in vitro grown follicles. *Hum. Reprod.* **26**, 2473–2485. <https://doi.org/10.1093/humrep/der183> (2011).
40. Devine, P. J., Perreault, S. D. & Luderer, U. Roles of reactive oxygen species and antioxidants in ovarian toxicity. *Biol. Reprod.* **86**, 27. <https://doi.org/10.1095/biolreprod.111.095224> (2012).
41. Prasad, S., Tiwari, M., Pandey, A. N., Shrivastav, T. G. & Chaube, S. K. Impact of stress on oocyte quality and reproductive outcome. *J. Biomed. Sci.* **23**, 36. <https://doi.org/10.1186/s12929-016-0253-4> (2016).
42. Makker, A., Goel, M. M. & Mahdi, A. A. PI3K/PTEN/Akt and TSC/mTOR signaling pathways, ovarian dysfunction, and infertility: an update. *J. Mol. Endocrinol.* **53**, R103–118. <https://doi.org/10.1530/jme-14-0220> (2014).
43. Dupont, J., Reverchon, M., Cloix, L., Froment, P. & Ramé, C. Involvement of adipokines, AMPK, PI3K and the PPAR signaling pathways in ovarian follicle development and cancer. *Int. J. Dev. Biol.* **56**, 959–967. <https://doi.org/10.1387/ijdb.120134jd> (2012).
44. Dunning, K. R., Akison, L. K., Russell, D. L., Norman, R. J. & Robker, R. L. Increased beta-oxidation and improved oocyte developmental competence in response to l-carnitine during ovarian in vitro follicle development in mice. *Biol. Reprod.* **85**, 548–555. <https://doi.org/10.1095/biolreprod.110.090415> (2011).
45. Dunning, K. R., Russell, D. L. & Robker, R. L. Lipids and oocyte developmental competence: the role of fatty acids and beta-oxidation. *Reproduction (Cambridge, England)* **148**, R15–27. <https://doi.org/10.1530/rep-13-0251> (2014).
46. Sánchez, F. & Smits, J. Molecular control of oogenesis. *Biochem. Biophys. Acta* **1896–1912**, 2012. <https://doi.org/10.1016/j.bbadis.2012.05.013> (1822).
47. Wang, Y. *et al.* Cyclic AMP in oocytes controls meiotic prophase I and primordial folliculogenesis in the perinatal mouse ovary. *Development* **142**, 343–351. <https://doi.org/10.1242/dev.112755> (2015).
48. Parrish, E. M., Siletz, A., Xu, M., Woodruff, T. K. & Shea, L. D. Gene expression in mouse ovarian follicle development in vivo versus an ex vivo alginate culture system. *Reproduction (Cambridge, England)* **142**, 309–318. <https://doi.org/10.1530/rep-10-0481> (2011).
49. Hamazaki, N. *et al.* Reconstitution of the oocyte transcriptional network with transcription factors. *Nature* **589**, 264–269. <https://doi.org/10.1038/s41586-020-3027-9> (2021).
50. Zhao, H. *et al.* Transcription factor FIGLA is mutated in patients with premature ovarian failure. *Am. J. Hum. Genet.* **82**, 1342–1348. <https://doi.org/10.1016/j.ajhg.2008.04.018> (2008).

51. Qin, Y., Jiao, X., Simpson, J. L. & Chen, Z. J. Genetics of primary ovarian insufficiency: new developments and opportunities. *Hum. Reprod. Update* **21**, 787–808. <https://doi.org/10.1093/humupd/dmv036> (2015).
52. Massin, N. *et al.* Significance of ovarian histology in the management of patients presenting a premature ovarian failure. *Hum. Reprod.* **19**, 2555–2560. <https://doi.org/10.1093/humrep/deh461> (2004).
53. Kilkenny, C., Browne, W. J., Cuthill, I. C., Emerson, M. & Altman, D. G. Improving bioscience research reporting: the ARRIVE guidelines for reporting animal research. *PLoS Biol.* **8**, e1000412. <https://doi.org/10.1371/journal.pbio.1000412> (2010).
54. Azusa, I., Kazuko, S., Fugaku, A. & Yi, Z. siRNA-mediated depletion of stable proteins in mouse oocytes. *Protocol Exchange*, <https://doi.org/10.1038/protex.2014.024> (2021)
55. Pfender, S. *et al.* Live imaging RNAi screen reveals genes essential for meiosis in mammalian oocytes. *Nature* **524**, 239–242. <https://doi.org/10.1038/nature14568> (2015).
56. da Huang, W., Sherman, B. T. & Lempicki, R. A. Systematic and integrative analysis of large gene lists using DAVID bioinformatics resources. *Nat. Protoc.* **4**, 44–57. <https://doi.org/10.1038/nprot.2008.211> (2009).

Acknowledgements

The authors thank Dr. Azusa Inoue and Dr. Hiroshi Ohta for their technical advice and we thank Ms. Shoko Sakai, Ms. Masako Imano, and Ms. Nami Matsuda for their technical support for microinjections. We also thank Ms. Iku Sugiyama and Ms. Mizuho Takemura for their assistance. This study was supported by a Grant-in-Aid for Scientific Research (No. 17K11231) from the Japan Society for the Promotion of Science.

Author contributions

A.O., A.H., Y.S., and M.S. conceived and designed the study. A.O. performed experiments under the supervision of M.S. A.O., J.B., S.T., and N.M. designed and performed in silico analyses. A.O. wrote the manuscript. A.H., H.T., and Y.S. edited the manuscript. J.H., E.K. and M.M. critically reviewed the manuscript. A.H., H.T., and Y.S. provided funding. Y.S., N.M., and M.M. supervised the project.

Competing interests

The authors declare no competing interests.

Additional information

Supplementary Information The online version contains supplementary material available at <https://doi.org/10.1038/s41598-021-89052-3>.

Correspondence and requests for materials should be addressed to A.H.

Reprints and permissions information is available at www.nature.com/reprints.

Publisher's note Springer Nature remains neutral with regard to jurisdictional claims in published maps and institutional affiliations.



Open Access This article is licensed under a Creative Commons Attribution 4.0 International License, which permits use, sharing, adaptation, distribution and reproduction in any medium or format, as long as you give appropriate credit to the original author(s) and the source, provide a link to the Creative Commons licence, and indicate if changes were made. The images or other third party material in this article are included in the article's Creative Commons licence, unless indicated otherwise in a credit line to the material. If material is not included in the article's Creative Commons licence and your intended use is not permitted by statutory regulation or exceeds the permitted use, you will need to obtain permission directly from the copyright holder. To view a copy of this licence, visit <http://creativecommons.org/licenses/by/4.0/>.

© The Author(s) 2021