



Since January 2020 Elsevier has created a COVID-19 resource centre with free information in English and Mandarin on the novel coronavirus COVID-19. The COVID-19 resource centre is hosted on Elsevier Connect, the company's public news and information website.

Elsevier hereby grants permission to make all its COVID-19-related research that is available on the COVID-19 resource centre - including this research content - immediately available in PubMed Central and other publicly funded repositories, such as the WHO COVID database with rights for unrestricted research re-use and analyses in any form or by any means with acknowledgement of the original source. These permissions are granted for free by Elsevier for as long as the COVID-19 resource centre remains active.

Journal Pre-proof

Socio-economic inequalities in the effect of public policies and the COVID-19 pandemic on exclusive breastfeeding in Chile

Deborah Navarro-Rosenblatt, Tarik Benmarhnia, Paula Bedregal, Sandra Lopez-Arana, Lorena Rodriguez-Osiac, Maria Luisa Garmendia



PII: S0033-3506(22)00317-1

DOI: <https://doi.org/10.1016/j.puhe.2022.11.001>

Reference: PUHE 4745

To appear in: *Public Health*

Received Date: 7 August 2022

Revised Date: 27 October 2022

Accepted Date: 1 November 2022

Please cite this article as: Navarro-Rosenblatt D, Benmarhnia T, Bedregal P, Lopez-Arana S, Rodriguez-Osiac L, Garmendia ML, Socio-economic inequalities in the effect of public policies and the COVID-19 pandemic on exclusive breastfeeding in Chile, *Public Health*, <https://doi.org/10.1016/j.puhe.2022.11.001>.

This is a PDF file of an article that has undergone enhancements after acceptance, such as the addition of a cover page and metadata, and formatting for readability, but it is not yet the definitive version of record. This version will undergo additional copyediting, typesetting and review before it is published in its final form, but we are providing this version to give early visibility of the article. Please note that, during the production process, errors may be discovered which could affect the content, and all legal disclaimers that apply to the journal pertain.

© 2022 The Royal Society for Public Health. Published by Elsevier Ltd. All rights reserved.

TITLE

Socio-economic inequalities in the effect of public policies and the COVID-19 pandemic on exclusive breastfeeding in Chile

Deborah Navarro-Rosenblatt¹, Tarik Benmarhnia², Paula Bedregal³, Sandra Lopez-Arana⁴, Lorena Rodriguez-Osiac⁵, Maria Luisa Garmendia^{6*}

1. PhD program, School of Public Health, University of Chile. Av. Independencia 939, Independencia. Santiago, Chile.
2. Department of Family Medicine and Public Health, University of California at San Diego, California. # 9500 Gilman Drive, La Jolla CA 92093. United States of America
3. School of Public Health, Pontifical Catholic University of Chile, Av. Libertador Bernardo O'Higgins 340. Santiago, Chile.
4. Department of Nutrition, Faculty of Medicine, University of Chile. Av. Independencia 1027, Independencia. Santiago, Chile.
5. School of Public Health, University of Chile. Av. Independencia 939, Independencia. Santiago, Chile.
6. Institute of Nutrition and Food Technology, University of Chile. Av. El Libano 5524, Macul. Santiago, Chile

***Corresponding author:** Maria-Luisa Garmendia, Av. El Libano 5524, Macul. Santiago, Chile. mgarmendia@inta.uchile.cl. Phone number: +569229781402

Authors have no conflict of interest to declare

ABSTRACT

Objective: To assess the impact of the addition of 12 maternity leave (ML) weeks (2011), a pay for performance (P4P) exclusive breastfeeding (EBF) promotion strategy (2015) and the COVID-19 pandemic in EBF inequalities in Chile.

Study Design: Interrupted time series analyses (ITSA)

Methods: Aggregated national EBF data by municipality and month were collected from 2009 to 2020. We assess the impact of the three events in EBF inequalities using two procedures: 1. ITSA stratified by municipal SES quintiles (Q1-Q5); 2. calculating the EBF slope index of inequality (SII).

Results: The EBF prevalence was higher in lower SES municipalities before and after the three time-events. No impact in EBF inequalities were observed after the extended ML. The P4P strategy increased EBF at six months in all SES quintiles (effect size between 4% and 5%), but in a higher level in poorer municipalities (SII: -0.36% and -1.05%). During COVID-19, wealthier municipalities showed a slightly higher EBF at six-month prevalence (SII: 1.44%).

Conclusion: The null impact of the extended ML in EBF inequalities could be explained by a low access to ML among affiliated to the public health system (20%). The P4P strategy includes multiple interventions that seemed effective in increasing EBF across all SES quintiles, but further in lower quintiles. The restrictions in healthcare access in poorer municipalities could explain EBF inequalities during COVID-19.

Keywords: Exclusive breastfeeding; interrupted time series; health policy; COVID-19; maternity leave; socio-economic inequalities; Chile.

Abstract word count: 253

World count: 3099

Journal Pre-proof

INTRODUCTION

The multiple benefits of exclusive breastfeeding (EBF), for children and their mothers are well established (1–4).

Kawachi describes health inequalities (HI) as “measurable unequal distribution, or differences, on a health outcome across individuals or defined population groups” (5).

HI could be linked to cultural, ethnic, historical, socio-economic, regional, geographical, and educational factors, among others (6,7). These inequalities have also been observed in EBF prevalence, between and within countries (8,9).

Several countries have introduced successful policies to increase EBF prevalence, such as the Baby-friendly Hospital Initiative; specialised training for health professionals; counselling for mothers and their families; regulation of formula milk sales and marketing; and paid maternity leave (ML) (1,2,10). However, only a few of these interventions have documented a decrease in EBF inequalities (6,11,12). Some studies have reported that ML could be successful in increasing EBF, however, this policy might present inequalities according to socioeconomic status (SES) (13,14).

In the past decade, Chile implemented two policies that directly and indirectly promoted EBF (see supplemental Table 1): the addition of 12 weeks of ML in October 2011, bringing the total to 24 weeks (five and a half months) and a Pay for Performance (P4P) strategy (usually defined as financial incentives or rewards for healthcare workers), in January 2015 (15,16). The P4P strategy was designed to improve healthcare goals accomplishment in public healthcare centres (PHCC) (17,18). In addition, the COVID-19 pandemic revealed deep inequalities in access to healthcare services, increasing household duties in women’s and a rise in female unemployment. All of these factors could have affected EBF practices (19).

A recently Chilean study reported that EBF at six months prevalence was of 49.2% in 2009 and 64.8% by November 2020, successfully achieving the 2025 WHO goal of at least 50% of EBF (20). That same study reported no effect of the extended ML in EBF prevalence, an increase in EBF prevalence at three months by 3.10% and at six by 5.6% after the P4P strategy; and a 4.5% decrease in EBF only at three months after COVID-19 (20). However, there were reported differences in EBF by urban and rural areas, and by geographic zones, despite the implementation of national strategies to promote EBF (21). While this study reported differences in the impact of the policies and COVID-19 per region, it did not analyse the impact of these events by SES.

The present article aims to analyse the impact in EBF inequalities by SES -at three and six months- after the extended ML introduced in 2011, the P4P strategy implemented in 2015, and COVID-19 in Chile. We hypothesise that the two policies and COVID-19 reflected in EBF inequalities towards lower-SES municipalities.

METHODS

1. Study Design & Setting

This is a nationwide study, with data of women and children attending Chile's public healthcare system and affiliated to the National Health Trust (FONASA). The latter comprises around 80% of Chilean women and children (22), covering mainly women and those who are poorer, older, and more ill. The other 20% of the population is attended in the private healthcare system, which is based on private insurers (ISAPREs) (23).

We used interrupted time-series analyses (ITSA) to measure changes in EBF inequalities, following the introduction of the two policies and COVID-19. In brief, an ITSA assesses whether there are changes over time in the trends of a determined

outcome (EBF prevalence), after a specific event (intervention or a natural experiment), and compares it to an estimated counterfactual trend based on pre-treatment observations (24,25).

Variables and data collection

2.1. Exclusive breastfeeding rates

EBF prevalence included monthly records from 324 Chilean municipalities, from January 2009 to November 2020. Data were obtained from the official PHCC feeding registries, recorded at the at three- and six-months' health check-ups. The healthcare professionals registered if a child had: EBF or partial breastfeeding; formula or solid food. Registration followed the WHO definition of EBF: "Exclusive breastfeeding refers to being uniquely fed by breast milk, from the mother, wet nurse, or pumped milk, without receiving any other kind of food or liquid unless a health professional prescribes a medicament, such as syrup or drops, vitamins or minerals". This definition includes children who occasionally receive small quantities of water (26). The registries from all PHCC are later collected and summarised per municipality.

Figures of the number of children with up-to-date check-ups were also obtained from the PHCC registries. The following definition was used for up-to-date check-ups: "children who attended health check-ups performed at the age of one, three, six, twelve and twenty months" (27).

The EBF percentages were calculated using the monthly number of children with EBF (at three or six months) per municipality, divided by the number of children with health check-ups per municipality.

2.2. Interventions (predictors)

This study included three time-events, namely two policies and the COVID-19 pandemic:

1. In October 2011, 12 extra weeks of ML were added, bringing the total to 24 weeks. The extended ML also incorporated more flexibility in ML access, aiming to increase ML access in women with informal jobs. Pre-intervention period was from January 2009 to September 2011, and the intervention period from October 2011 to December 2014.
2. In January 2015, a P4P strategy was implemented to promote EBF at six months in PHCC, aiming to encourage health workers to increase EBF promotion. The pre-intervention period was from January 2009 to December 2014, and the intervention period from January 2015 to November 2020.
3. March 2020 was the beginning of the COVID-19 pandemic in Chile. The pre-intervention was considered from January 2015 to March 2020, and the intervention period April 2020 to November 2020.

2.3. Municipal socio-economic status

The municipal SES was measured using the *Índice de Desarrollo Socioeconómico* (Index of Socioeconomic Development, ISED) (28). Gattini developed the ISED in 2013 to enable a better comparison of SES among Chilean municipalities. This index categorises 324 of the 346 Chilean municipalities. Two municipalities were excluded in the SES categorization because they did not include all the basic data, and another 20 were excluded because they had fewer than 2000 inhabitants. The index includes measures of poverty, education, income, life expectancy, and child mortality rates (table 1). While the ISED was originally broken down into ten deciles, we merged the ten categories into quintiles to reduce dispersion, with the first quintile being the lowest

SES and the fifth quintile the highest. To assess if there were changes in municipal SES during our study period, we compared the municipal rate of people under the poverty line, using data from the National Survey of Socio-Economic Characterisation (*Encuesta de Caracterización Socioeconómica Nacional*) published in 2011, 2013, 2015 and 2017 (29). The Survey was not performed in 2019. No changes in municipal SES were observed during this period (data not shown).

3. Covariables

3.1. Seasonality

To correct for seasonality, we incorporated a fixed-effect monthly dummy in the models (1-12), with the first month (January) serving as a reference category.

3.2. Number of municipalities with EBF data

This variable consisted of the total monthly national number of municipalities that reported data in EBF and was included because the EBF recording could have changed during the study period.

3.3. Accessibility to ML

More flexible norms for ML access were introduced together with the extra 12 weeks added to ML, however, no changes in ML access rate were observed during the study period (20% across the period) (30). The ML access rate was calculated using monthly aggregated national numbers of ML issued to affiliated to FONASA and divided by the number of new-borns affiliated to FONASA. The Social Welfare Superintendence supplied and authorized the use of the ML data, which is collected by the ML Management and Information System --SIMAT (31).

Data analysis

We first described the mean prevalence of EBF at three and six months by ISED quintiles, before and after the three time-events. Later, we ran several ITSA. The ITSA assumed that the SES EBF trends would have not been affected if the three time-events would not have occurred and that no other major interventions were implemented. In our study, the time-series had three segmented point. Each was analysed using independent models to avoid an overlapping effect of the interventions (extended ML from January 2009 to December 2014; P4P from January 2009 to November 2020; and the COVID-19 pandemic from January 2015 to November 2020).

We performed our EBF inequality analyses in two steps. First, we ran ITSA models of the effect of each time-event in EBF prevalence, stratifying by ISED SES quintiles and analysing heterogeneity between quintiles with the Cochran Q test (32). The heterogeneity test compared each quintile to a reference group (wealthiest quintile). Secondly, EBF prevalence was analysed using an absolute health inequality measure, the slope index of inequalities (SII) (33). The SII compares a plotted linear regression gradient of EBF prevalence, with the wealthiest quintile compared to the poorest quintile. When the SII is positive there is a higher accumulation of the outcome (EBF prevalence) among wealthier municipalities. In contrast, when the results are negative, the higher concentration of EBF prevalence is among poorer municipalities. A SII of zero indicates an equal distribution of the outcomes among rich and poor (7). We calculated the SII for each of the 143 months of our study, subsequently included all 143 monthly SII in an ITSA, looking to observe the change in SII EBF prevalence after the time-events.

We used the following regression model (equation 1) to estimate the trend change in EBF prevalence in step one and repeated them for the three-time events:

Equation 1

$$EBF_t(Y_{i,t}) = \beta_0 + \beta_1 T_{ti} + \beta_2 X_{ti} + \beta_3 X_{ti} T_{ti} + \beta_4 + e_{ti}$$

EBF symbolises the outcome at time point *T* (months) for each equally spaced time point *t* at individual level *i*. T_{ti} represents the time since the beginning of the study (1-143 months). X_{ti} characterises an intervention dummy variable (pre-intervention period=0, intervention=1) and $X_{ti}T_{ti}$ is an interaction term. β_0 is the intercept or *EBF* baseline of the study period. β_1 is the outcome trend before the intervention, which quantifies the trend in the absence of the intervention. β_2 is the change in the outcome following the intervention. β_3 represents the change in *EBF* trend in the long term after the intervention, compared to the *EBF* trend before the intervention. β_4 (months 1–12) represents the seasonality adjustment as a seasonal dummy. E_{ti} represents the errors in the model in the study period. These analyses were conducted using the ‘XTITSA’ STATA module (34).

For step two, we used the following model (equation 2):

Equation 2

$$EBF_t(Y_t) = \beta_0 + \beta_1 T_t + \beta_2 X_t + \beta_3 X_t T_t + \beta_4 + e_t$$

Equation 2 used the STATA command “ITSA”, which measures each monthly SII as individual data. This article reports results of the short time effect (change of level) after the intervention (β_2) and the long-term effect (β_3). However only the short time effect coefficients (β_2) are described in the result and discussion sections. The long-term effect results (β_3) showed similar trends to the short time effect (β_2) and can be found in tables 3 and 4.

Autocorrelation and partial autocorrelation were assessed using the Durbin-Watson test and visual plots. As small evidence of autocorrelation was identified, analyses were performed with correction for autocorrelation. We corroborated that our ITS was

non-stationary checking for normal distribution of the EBF trend and with summary statistics.

ML access and the number of municipalities with EBF data were included in sensitivity analyses as mediators.

1. Ethics

This study was approved by the Ethics in Human Research Committee of the Faculty of Medicine, University of Chile, under the Project: 069-2021 and file number: 045. Informed consent was not required because records were aggregated.

RESULTS

Table 2 shows the national prevalence of EBF at three and six months and by ISED SES quintiles, before and after implementing the extended ML, the P4P strategy, and COVID-19. The lower SES quintiles reported a higher mean EBF prevalence at three and six months, before and after each of the three-time events, (e.g., EBF at three months was 73.4% in the lowest quintile and 62.3% in the highest quintile before the extended ML, and 72.0% in the lowest quintile and 62.5% in the highest after the extended ML).

Table 3 presents the ITSA short term (β_2) and long term (β_3) effect estimates for EBF at three and six months, stratified by SES quintiles after the three events. The short-term effect estimates reported an increase in EBF at three months was identified after the implementation of the extended ML in the second, third and fifth quintiles, with heterogeneity only in the lowest quintile. No changes in EBF at six months were reported after the extended ML. The P4P strategy showed an increase in EBF at three months only in the lowest SES, with no heterogeneity, whereas at six months the P4P strategy reported an increase in EBF in all quintiles (between 4% and 5% increase),

with no heterogeneity. A decrease in EBF at three months was observed during COVID-19 only in the fourth quintile and no effect in EBF at six months, also with no heterogeneity. The results of the sensitivity analyses (adjusted by ML access and municipalities with EBF data) were similar to the main analyses (data not shown).

Figures 1a and 1b show the monthly trend of the municipal EBF SII at three and six months. Table 4 presents the ITSA short term (β_2) and long term (β_3) estimates of the monthly EBF SII after the extended ML, the P4P strategy and COVID-19. The SII for EBF at three and six months showed no changes after the extended ML. After the P4P strategy there was a higher EBF concentration at three and six months among women in poorer municipalities (SII: -0.36 [CI 95%: -0.63, -0.09] and SII: -1.05 [CI 95%: -1.37, -0.73], respectively). No changes in SII for EBF at three months were observed after COVID-19, whereas at six months EBF was skewed towards wealthier municipalities (SII: 1.44 [CI 95%: 0.92, 1.97]).

The long-term effect (β_3) in EBF prevalence can be found in tables 3 and 4. These results reported similar trend to what was observed in the short-term effect (β_2).

DISCUSSION

To our knowledge, this is the first study to analyse EBF inequalities in Chile after the implementation of extra 12 weeks of ML in October 2011, the P4P strategy in January 2015 and COVID-19. We observed higher EBF prevalence in lowest SES quintiles at three and six months, in accordance with previously published national (35) and international data (6).

We identified that the extended ML increased EBF only at three months and only in three SES quintiles. The P4P strategy increased EBF at six months prevalence in all

SES strata (ranged from 4% to 5%). No changes in EBF inequality were observed during COVID-19. The EBF prevalence had a higher increase at three and six months in poorer municipalities after the P4P strategy (SII: -0.36 and -1.05, respectively). Conversely, COVID-19 increased EBF at six months by 1.44% only in women living in wealthier municipalities.

Few studies have analysed inequalities in EBF. Bhattacharjee *et al.* (36), reported that EBF increased in 48% of the 94 low- and middle-income countries (LMICs) in the last decades, of these only 40% decreased EBF inequalities. A Latin American multicentre study showed that EBF prevalence was higher in the lowest-income quintiles in several countries, with only one country decreasing EBF inequalities during the study period (6). Another study performed in Brazil, reported that EBF increased in wealthier mothers more rapidly, together with an increase in absolute inequalities in EBF, which is not unusual when the baseline EBF levels among the poor are very low (37).

Maternity leave has previously been shown to increase EBF prevalence. Nonetheless, studies have reported that wealthier women might benefit more from ML (14). A study performed in the United States showed a modest increase in EBF at six months after introducing paid ML, but mainly in richer women (38). A British study identified that paid ML was related to a steady increase in breastfeeding initiation in the UK, without reducing EBF inequalities (39). The authors related a greater use of ML in women with higher levels of education, on account of their formal jobs and more access to breastfeeding information (13).

We reported null results on the impact of ML in EBF inequalities. A possible explanation for this could be low access to ML among those affiliated to the public health system, where only approximately 20% have access to ML (22,31), while a large percentage of women in the lower SES have informal jobs (40). In addition, the

extended ML leaves a total of only five and a half months (24 weeks), increasing the need for mothers to introduce formula or solid food before their children turn six months.

Our analyses showed that the P4P strategy increased EBF prevalence at three months only in the lowest quintile and at six months in all quintiles. We observed negative results in the SII for EBF prevalence after the P4P strategy at three and six months, meaning that the EBF prevalence had a greater increase in poorer municipalities. The differences between the stratified analyses and the SII could be explained by a reduction in statistical power in the stratified analyses. Finally, we cannot rule out the possibility of an overlapping effect of the ML plus the P4P.

The COVID-19 pandemic has been an important strain on society, but particularly on women, and at a higher level among poorer women (19,41,42). A study in the Republic of Ireland found that during COVID-19 confinement, 40% of mothers felt that their EBF was protected in lockdown, while 27% lacked support and faced barriers to breastfeeding, with many even discontinuing the practice. Most of the mothers who stopped EBF earlier than planned were from poorer backgrounds or ethnic minorities (41). A joint Canadian-Australian study revealed that an average Canadian woman with children spent 50 more hours per week than men on childcare during the COVID-19 pandemic. Australian women with children spent nearly 43 hours more than men on childcare (43). The higher concentration of EBF in wealthier municipalities identified in our results could be explained by the cut of medical check-ups to the bare minimum in lower income municipalities, prioritizing COVID-19 traceability, whereas inhabitants of wealthier municipalities might have had access to private healthcare.

Our study has several limitations. First, this is a quasi-experimental study, without a control group. However, ITSA considers the pre-intervention period as a

counterfactual trend. Second, as only the public health system collects EBF data, our study did not include EBF data from wealthier women (approximately 20%) (22). Thus, our results represent only those affiliated to the public sector. Third, it is possible that under- or over-registration might have occurred. However, this bias should not be differentiated by SES. Fourthly, the SII is an absolute measure of health inequalities that considers all the population in a SES gradient, without contemplating that some SESs might not have a gradient behaviour. Finally, we acknowledge that multiple observations before the treatment/shock of interest are required to build a plausible counterfactual when conducting ITSA. Yet, the number of observations post-treatment is mostly important for statistical power considerations, as well as taking into account possible delayed effects. However, in our analysis focusing on the COVID-19 shock, we were able to identify a change in EBF at three months (with statistical precise estimates), but not at six months. Furthermore, the Cochrane EPOC working group guidelines recommend that “ITS should have a minimum of three data points before and three after to be considered in a Cochrane review study” (44). We concede that our COVID-19 results should be interpreted with caution regarding the short period post-treatment considered in this study.

CONCLUSION

Our findings highlight that no EBF inequalities were identified after the implementation of the extended ML, which could be explained by low ML access in public health system-affiliated and the insufficient duration of the ML. Our results also suggest that the P4P is successful in increasing EBF across all socio-economic quintiles, but in a higher level in lower SES municipalities. The COVID-19 pandemic increased EBF at six months in wealthier municipalities, which had lower EBF to begin with.

Our study showed that is imperative to reinforce EBF support across SES. Increasing the ML current duration, providing more flexible ML access and enhance EBF promotion policies, are more likely to thrive in higher EBF prevalence across SES. Follow-up studies of the EBF trend during the COVID-19 period are required.

AUTHOR STATEMENTS

Financial Support: The submitted work was financially supported by the Chilean National Fund for Scientific and Technological Development (FONDECYT), under the grants 1130277 and 1150878. DN-R holds a Chilean Commission of Science and Technology student fellowship to perform a PhD at the School of Public Health, University of Chile, under the grant number 21151097.

Ethical approval: This study was approved by the Ethics in Human Research Committee of the Faculty of Medicine, University of Chile, under the Project: 069-2021 and file number: 045. Informed consent was not required because records were aggregated.

Conflict of Interest: The authors certify that they have NO conflict of interest

Acknowledgements: We would like to thank the Social Welfare Superintendence (SUSESO) for providing the information on maternity leave access and to the Ministry of Health for the data on exclusive breastfeeding. Special thanks to Benaiah Moses for English proofreading this manuscript and to Sarah Moses for your inspiration.

REFERENCES

1. Victora CG, Bahl R, Barros AJ, França GV, Horton S, Krasevec J, et al. Breastfeeding in the 21st century: epidemiology, mechanisms, and lifelong effect. *Lancet*. 2016 Jan;387(10017):475–90.
2. Rollins NC, Bhandari N, Hajeebhoy N, Horton S, Lutter CK, Martines JC, et al. Why invest, and what it will take to improve breastfeeding practices? *Lancet*. 2016 Jan;387(10017):491–504.
3. Dror DK, Allen LH. Overview of Nutrients in Human Milk. *Adv Nutr*. 2018 May;9(suppl_1):278S-294S.
4. World Cancer Research Fund., American Institute for Cancer Research. Food, nutrition, physical activity, and the prevention of cancer : a global perspective. Washington, DC: WCRF/AICR; 2018. xxv, 517 p. p.
5. Kawachi I, Subramanian SV, Almeida-Filho N. A glossary for health inequalities. *J Epidemiol Community Health*. 2002 Sep;56(9):647–52.
6. Ferreira CS, Azeredo CM, Rinaldi AEM. Trends in social inequalities in breastfeeding and infant formulas in Latin American countries between the 1990 and 2010 decades. *Public Health Nutr*. 2021 Jan 27;1–10.
7. Arcaya MC, Arcaya AL, Subramanian SV. Inequalities in health: definitions, concepts, and theories. *Glob Health Action*. 2015 Jun 24;8:27106–27106.
8. Barros FC, Victora CG, Scherpbier R, Gwatkin D. Socioeconomic inequities in the health and nutrition of children in low/middle income countries. *Rev Saude Publica*. 2010 Feb;44(1):1–16.
9. Dodgson JE. Considering Inequities in Breastfeeding. *J Hum Lact*. 2017 May;33(2):248–9.
10. Buckland C, Hector D, Kolt GS, Fahey P, Arora A. Interventions to promote exclusive breastfeeding among young mothers: a systematic review and meta-analysis. *Int Breastfeed J*. 2020 Dec 1;15(1):102.
11. Saputri NS, Spagnoletti BRM, Morgan A, Wilopo SA, Singh A, McPake B, et al. Progress towards reducing sociodemographic disparities in breastfeeding outcomes in Indonesia: a trend analysis from 2002 to 2017. *BMC Public Health*. 2020 Dec;20(1):1112.
12. the PATHS Equity Team, Nickel NC, Martens PJ, Chateau D, Brownell MD, Sarkar J, et al. Have we left some behind? Trends in socio-economic inequalities in breastfeeding initiation: A population-based epidemiological surveillance study. *Can J Public Health*. 2014 Sep;105(5):e362–8.
13. Andres E, Baird S, Bingenheimer JB, Markus AR. Maternity Leave Access and Health: A Systematic Narrative Review and Conceptual Framework Development. *Matern Child Health J*. 6;20(6):1178–92.

14. Navarro-Rosenblatt D, Garmendia ML. Maternity Leave and Its Impact on Breastfeeding: A Review of the Literature. *Breastfeed Med* [Internet]. 2018/09/25 ed. 2018 Sep; Available from: <https://www.ncbi.nlm.nih.gov/pubmed/30256125>
15. Biblioteca del Congreso Nacional. Resolución Exenta 880 [Internet]. Chile: Gobierno de Chile.; 2014. Available from: <https://www.leychile.cl/N?i=1067767&f=2014-10-02&p=>
16. Cornejo-Ovalle M, Brignardello-Petersen R, Pérez G. Pay-for-performance and efficiency in primary oral health care practices in Chile. *Rev Clínica Periodoncia Implantol Rehabil Oral*. 2015 Apr;8(1):60–6.
17. Langdown C, Peckham S. The use of financial incentives to help improve health outcomes: is the quality and outcomes framework fit for purpose? A systematic review. *J Public Health*. 2014 Jun;36(2):251–8.
18. Scott A, Sivey P, Ait Ouakrim D, Willenberg L, Naccarella L, Furler J, et al. The effect of financial incentives on the quality of health care provided by primary care physicians. Cochrane Effective Practice and Organisation of Care Group, editor. *Cochrane Database Syst Rev* [Internet]. 2011 Sep 7 [cited 2021 Feb 21]; Available from: <http://doi.wiley.com/10.1002/14651858.CD008451.pub2>
19. Busch-Hallen J, Walters D, Rowe S, Chowdhury A, Arabi M. Impact of COVID-19 on maternal and child health. *Lancet Glob Health*. 2020 Oct;8(10):e1257.
20. Navarro Rosenblatt D, Garmendia ML. Impact of public health policies and the COVID-19 pandemic on the end of exclusive breastfeeding in Chile. In: *Archivos Latinoamericanos de Nutrición* [Internet]. Paraguay; 2021. Available from: <http://www.alanrevista.org/ediciones/2021/suplemento-1/art-92/>
21. Navarro Rosenblatt D, Garmendia ML. Are there differences between rural/urban areas and geographic zones in exclusive breastfeeding in Chile, after the implementation of two public health policies and the covid-19 pandemic? [Internet]. 2021. Available from: https://www.alanrevista.org/ediciones/2021/suplemento-1/art-96/?utm_source=researcher_app&utm_medium=referral&utm_campaign=RESR_MRKT_Researcher_inbound
22. SUSESO. Protección a la maternidad en Chile: Evolución del Permiso Postnatal Parental a cinco años de su implementación 2011-2016. 2016;
23. Crispi F, Cherla A, Vivaldi EA, Mossialos E. Rebuilding the broken health contract in Chile. *The Lancet*. 2020 Apr;395(10233):1342.
24. Bernal JL, Cummins S, Gasparrini A. Interrupted time series regression for the evaluation of public health interventions: a tutorial. *Int J Epidemiol*. 2017;46(1):348–55.
25. Linden A. Conducting interrupted time-series analysis for single-and multiple-group comparisons. *Stata J*. 2015;15(2):480–500.
26. Chile M de S de, editor. Resúmenes Estadísticos Mensuales DEIS [Internet]. 2018. Available from: <http://www.deis.cl/resumenes-estadisticos-mensuales-deis/>

27. salud. D de estadística e información en. Manuales series REM, 2013 [Internet]. Ministerio de Salud, Chile; 2013. Available from: <http://epi.minsal.cl/datos-drs/#/2BT5QWY5W>
28. Gattini C, Chavez C, Alberts C. Comunas de Chile, según nivel socio-económico, de salud y desarrollo humano. Revisión 2013 [Internet]. 2014 [cited 2020 Oct 31]. Available from: <http://ochisap.cl/>
29. Ministry of Welfare. Nacional Survey of Socio-economic Characterization (Encuesta de Caracterización Socioeconómica Nacional, CASEN) [Internet]. Chile; 2021. Available from: <http://observatorio.ministeriodesarrollosocial.gob.cl/encuesta-casen>
30. Chile G de. Ley 20545 Modifica las Normas de Protección a la Maternidad e Incorpora el Permiso Postnatal Parental [Internet]. Chile: Gobierno de Chile; 2011. Available from: <https://www.leychile.cl/Navegar?idNorma=1030936>
31. SUSESO. Sistema de Gestión de Información de Subsidios Maternales – SIMAT Superintendencia de Seguridad Social [Internet]. Estadísticas mensuales. 2021. Available from: <https://www.suseso.cl/608/w3-propertyvalue-59544.html>
32. Higgins JP, Thompson SG, Deeks JJ, Altman DG. Measuring inconsistency in meta-analyses. *BMJ*. 2003 Sep;327(7414):557–60.
33. Moreno-Betancur M, Latouche A, Menvielle G, Kunst AE, Rey G. Relative Index of Inequality and Slope Index of Inequality: A Structured Regression Framework for Estimation. *Epidemiology* [Internet]. 2015;26(4). Available from: https://journals.lww.com/epidem/Fulltext/2015/07000/Relative_Index_of_Inequality_and_Slope_Index_of.12.aspx
34. Linden A. XTITSA: Stata module for performing interrupted time-series analysis for panel data. *Stat Softw Compon* [Internet]. Available from: <https://ideas.repec.org/c/boc/bocode/s458903.html>
35. Farkas C, Girard LC. Breastfeeding initiation and duration in Chile: understanding the social and health determinants. *J Epidemiol Community Health*. 2019/03/13 ed. 2019 Jul;73(7):637–44.
36. Bhattacharjee NV, Schaeffer LE, Hay SI, Local Burden of Disease Exclusive Breastfeeding Collaborators. Mapping inequalities in exclusive breastfeeding in low- and middle-income countries, 2000-2018. *Nat Hum Behav*. 2021 Jun 3;
37. Santos IS, Barros FC, Horta BL, Menezes AMB, Bassani D, Tovo-Rodrigues L, et al. Breastfeeding exclusivity and duration: trends and inequalities in four population-based birth cohorts in Pelotas, Brazil, 1982–2015. *Int J Epidemiol*. 2019 Apr 1;48(Supplement_1):i72–9.
38. Hamad R, Modrek S, White JS. Paid Family Leave Effects on Breastfeeding: A Quasi-Experimental Study of US Policies. *Am J Public Health*. 2019 Jan;109(1):164–6.

39. Simpson DA, Quigley MA, Kurinczuk JJ, Carson C. Twenty-five-year trends in breastfeeding initiation: The effects of sociodemographic changes in Great Britain, 1985-2010. Washio Y, editor. PLOS ONE. 2019 Jan 17;14(1):e0210838.
40. Estadísticas IN de. Mujeres en Chile y mercado del trabajo: Participación laboral femenina y brechas salariales. 2015;
41. Brown A, Shenker N. Experiences of breastfeeding during COVID-19: Lessons for future practical and emotional support. *Matern Child Nutr.* 2020/09/23 ed. 1;17(1):e13088.
42. Instituto Nacional de Estadísticas - Chile. Bolentín estadístico: empleo trimestral (trimestre móvil octubre- diciembre 2020) [Internet]. Chile; 2020. Available from: <https://www.ine.cl/docs/default-source/ocupacion-y-desocupacion/boletines/2020/pa%C3%ADs/bolet%C3%ADn-empleo-nacional-trimestre-m%C3%B3vil-octubre-noviembre-diciembre-2020.pdf>
43. Kotlar B, Gerson E, Petrillo S, Langer A, Tiemeier H. The impact of the COVID-19 pandemic on maternal and perinatal health: a scoping review. *Reprod Health.* 2021 Dec;18(1):10.
44. What study designs can be considered for inclusion in an EPOC review and what should they be called? [Internet]. Cochrane Effective Practice and Organisation of Care (EPOC). 2017. Available from: https://epoc.cochrane.org/sites/epoc.cochrane.org/files/public/uploads/Resources-for-authors2017/what_study_designs_should_be_included_in_an_epoc_review.pdf

Table 1. Socio-economic development and health indicators for each municipal socio-economic quintile* in 2013

Quintile	Number of municipalities	Population (thousand)	ISED‡ average	Economy		Education	Housing & hygiene		Life expectancy	Human development index	PYLL†	Swaroop Index	Infant mortality
				Monthly per capita income (\$1000)	Poverty % 2006-2011	Schooling years 2006-2011	% houses with good or acceptable housing material	% households with running water & pipes	Years (2005-2010)		Rate *1000 habitants 2007-2011	% deaths 50+ years/ 100 deaths 2011	*1000 born alive 2009-2011
1	176	3347.3	0.475	134.5	21.1	8.5	75.8	74	76.1	0.450	84.4	76.2	7.6
2	72	3306.2	0.589	164.8	16.2	9.6	81.2	91.7	76.8	0.531	77.2	73.2	8.0
3	36	3413.0	0.651	206.7	14.4	10.5	84.1	95.0	77.5	0.594	71.7	74.8	7.9
4	22	3350.5	0.675	211.7	13.2	10.8	85.6	97.2	78.2	0.625	62.1	73.9	7.6
5	24	3501.4	0.769	399.4	7.5	11.8	89.0	98.5	78.4	0.714	69.5	77.1	7.1

Table adapted from Gattini et al (28)

*Deciles in original table were merged into quintiles

† PYLL: potential years of life lost

‡ Index of Socio-economic Development

Table 2. Exclusive breastfeeding mean prevalence (95% CI), at three and six months, according to public policy and COVID-19, by municipal socio-economic status, Chile 2009-2020.

3 Months						
Total Country/Quintile	Extended Maternity Leave		Primary Health Care Goal		COVID-19	
	Before [#]	After ^{**}	Before [#]	After ^{**}	Before [#]	After ^{**}
Total Country	69.5 (69.0, 70.1)	68.4 (67.9, 69.0)	69.0 (68.6, 69.4)	71.6 (71.2, 72.1)	71.6 (71.2, 72.1)	71.2 (69.3, 73.1)
1 (lower)	73.4 (72.5, 74.3)*	72.0 (71.1, 72.9)*	72.8 (72.2, 73.3)*	76.1 (75.3, 77.0)*	76.2 (75.3, 77.1)*	75.3 (72.3, 78.2)*
2	68.9 (67.9, 69.8)*	68.1 (67.2, 69.0)*	68.5 (67.8, 69.1)*	71.3 (70.5, 72.1)*	71.3 (70.5, 72.1)*	71.4 (67.4, 75.4)*
3	64.6 (63.4, 65.9)*	64.9 (63.6, 66.2)*	64.7 (63.8, 65.6)*	68.4 (67.4, 69.3)*	68.4 (67.4, 69.3)	68.9 (65.4, 72.3)
4	59.9 (58.5, 61.4)	59.7 (58.6, 60.9)*	59.8 (58.9, 60.8)*	66.4 (65.4, 67.4)	66.1 (65.1, 67.1)	72.2 (58.0, 68.6)
5 (reference)	62.3 (60.5, 64.1)	62.5 (60.9, 64.0)	62.4 (61.2, 63.6)	66.2 (65.7, 68.0)	67.2 (66.1, 68.4)	63.3 (58.0, 68.6)
6 Months						
Total Country	49.2 (48.6, 49.8)	51.5 (50.9, 52.1)	50.3 (49.9, 50.8)	62.4 (61.9, 62.9)	62.2 (61.7, 62.7)	64.6 (62.5, 66.7)
1 (lower)	53.4 (50.4, 52.4)*	55.9 (54.9, 57.0)*	53.5 (52.8, 54.2)*	68.3 (64.8, 69.1)*	68.1 (67.2, 69.0)*	70.8 (67.5, 74.1)*
2	49.5 (48.4, 50.6)*	50.7 (49.6, 51.7)*	40.4 (39.4, 41.4)*	55.5 (54.5, 56.5)	60.9 (60.0, 61.7)*	63.8 (59.8, 67.8)*
3	42.6 (41.3, 44.0)	43.9 (42.4, 45.3)*	43.2 (42.3, 44.2)*	56.8 (55.8, 57.8)	56.6 (55.6, 57.6)	59.4 (54.2, 64.5)
4	39.8 (38.3, 41.3)*	40.9 (39.6, 42.2)*	50.1 (49.3, 50.9)*	61.1 (60.2, 61.9)*	55.2 (54.2, 56.2)	60.3 (55.0, 65.6)
5 (reference)	43.6 (41.9, 45.4)	46.7 (45.1, 48.2)	45.3 (44.1, 46.4)	56.6 (55.3, 57.7)	56.1 (55.4, 57.8)	55.8 (49.6, 67.8)

#Before: 1. Extended maternity leave: January 2009/ September 2011; 2. Primary Health Care Goal: January 2009/ December 2014; 3. COVID-19: January 2015/March 2020

**After: 1. Extended maternity leave: October 2011/ December 2014; 2. Primary Health Care Goal: January 2015/ November 2020; 3. COVID-19: April 2020/ November 2020

*Comparison between each municipal SES quintile and higher municipal SES quintile (fifth). Significance: P value = 0.05 or less compared to the reference group (quintile 5)

Table 3. EBF at three and six months' trend, after the implementation of the extended maternity leave, the EBF primary health care goal and after the beginning of the COVID-19 pandemic, by municipal socio-economic status.

Outcome	%EBF change (95% CI)				
	3 months				
	SES 1	SES 2	SES 3	SES 4	SES 5
Extended maternity leave					
EBF change after ML (β_2)	-0.25 (-2.55, 2.05)	2.78 (0.11, 5.46)	3.71 (0.00, 7.43)	1.78 (-2.37, 5.93)	5.13 (0.40, 9.86)
P Heterogeneity*	0.010*	0.324	0.749	0.292	Reference
EBF trend change[†] (β_3)	0.10 (0.00, 0.21)	0.16 (0.04, 0.28)	0.37 (0.18, 0.56)	0.22 (-0.01, 0.45)	-0.23 (-0.47, 0.00)
Post-intervention trend[‡]	0.03 (-0.04, 0.10)	0.01 (-0.07, 0.09)	0.14 (0.16, 0.27)	0.19 (-0.01, 0.38)	-0.23 (-0.41, -0.06)
Primary health care goal					
EBF change after P4P (β_2)	3.22 (1.32, 5.12)	1.47 (-0.55, 3.51)	-1.00 (-3.66, 1.66)	1.18 (-1.79, 4.16)	3.10 (-0.18, 6.38)
P Heterogeneity*	0.943	0.356	0.051	0.393	Reference
EBF trend change[§] (β_3)	0.06 (0.01, 0.11)	0.08 (0.03, 0.14)	0.08 (0.01, 0.15)	0.14 (0.06, 0.22)	0.00 (-0.08, 0.8)
Post-intervention trend[¶]	0.03 (-0.00, 0.07)	0.06 (0.02, 0.10)	0.11 (0.06, 0.17)	0.13 (0.06, 0.19)	0.00 (-0.06, 0.06)
COVID-19					
EBF change after COVID-19(β_2)	-2.21 (-8.37, 3.94)	-4.28 (-10.7, 2.22)	-6.17 (-14.6, 2.31)	-12.15 (-23.2, -1.01)	-5.98 (-14.8, 2.86)
P Heterogeneity*	0.464	0.741	0.958	0.409	Reference
EBF trend change[#] (β_3)	-0.20 (-1.58, 1.17)	0.27 (-1.13, 1.68)	-0.11 (-1.88, 1.65)	3.31 (1.00, 5.62)	0.10 (-1.74, 1.95)
Post-intervention trend^{**}	-0.14 (-1.52, 1.23)	0.34 (-1.06, 1.75)	0.02 (-1.74, 1.79)	3.42 (1.11, 5.73)	0.12 (-1.73, 1.97)
6 months					
Extended maternity leave, 2011					
EBF change after ML (β_2)	1.44 (-1.00, 3.90)	-0.75 (-3.71, 2.20)	-0.84 (-4.79, 3.10)	-2.23 (-6.37, 1.90)	-1.87 (-6.54, 2.79)
P Heterogeneity*	0.278	0.234	0.945	0.885	Reference
EBF trend change[†] (β_3)	0.03 (-0.07, 0.15)	-0.02 (-0.16, 0.11)	0.10 (-0.07, 0.29)	0.00 (-0.19, 0.20)	-0.15 (-0.37, 0.06)
Post-intervention trend[‡]	0.08 (0.01, 0.16)	0.04 (-0.04, 0.13)	0.08 (-0.03, 0.20)	0.09 (-0.02, 0.21)	0.02 (-0.11, 0.16)
Primary health care goal					
EBF change after P4P (β_2)	4.36 (2.49, 6.24)	4.24 (2.16, 6.32)	4.79 (2.11, 7.47)	5.01 (2.12, 7.91)	4.41 (1.22, 7.60)
P Heterogeneity*	0.977	0.923	0.846	0.781	Reference
EBF trend change[§] (β_3)	0.05 (0.00, 0.10)	0.12 (0.06, 0.17)	0.15 (0.08, 0.22)	0.18 (0.10, 0.26)	0.00 (-0.08, 0.08)
Post-intervention trend[¶]	0.15 (0.11, 0.19)	0.16 (0.12, 0.21)	0.18 (0.13, 0.24)	0.23 (0.16, 0.29)	0.06 (-0.00, 0.12)
COVID-19					
EBF change after COVID-19(β_2)	-3.16 (-9.32, 2.98)	-5.00 (-11.5, 1.57)	-1.00 (-9.80, 7.78)	-2.44 (-13.5, 8.62)	3.74 (-6.47, 13.9)
P Heterogeneity*	0.19	0.12	0.783	0.413	Reference
EBF trend change[#] (β_3)	-0.87 (-2.20, 0.44)	-0.14 (-1.53, 1.23)	-1.63 (-3.48, 0.21)	-1.25 (-3.62, 1.12)	-2.74 (-4.96, -0.53)
Post-intervention trend^{**}	-0.70 (-2.03, 0.62)	0.04 (-1.33, 1.43)	-1.42 (-3.27, 0.42)	-1.02 (-3.40, 1.35)	-2.66 (-4.88, -0.44)

*P-Heterogeneity for the EBF change first month coefficient

† Nov. 2011– Dec. 2014 relative to Jan. 2009–Oct. 2011; ‡ Monthly change Nov. 2011- Dec.2014; §Jan. 2009– Dec. 2014 relative to Jan. 2015–Nov. 2020; ¶ Monthly change Jan. 2015- Nov.2020; #Jan. 2015– March. 2020 relative to April. 2020– Nov. 2020; ** Monthly change April. 2020- Nov.2020

Figure 1.a. Exclusive breastfeeding at three months inequality gap trend, from January 2009 to November 2020, measured with slope index of inequality

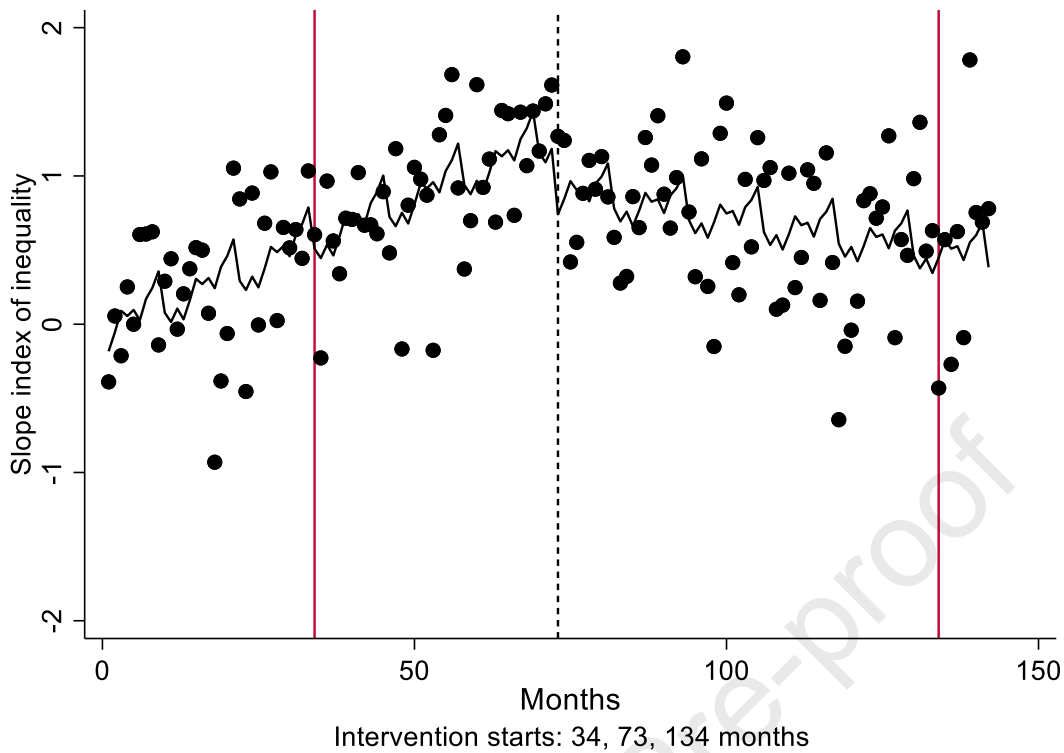


Figure 1.b. Exclusive breastfeeding at six months inequality gap trend, from January 2009 to November 2020, measured with slope index of inequality

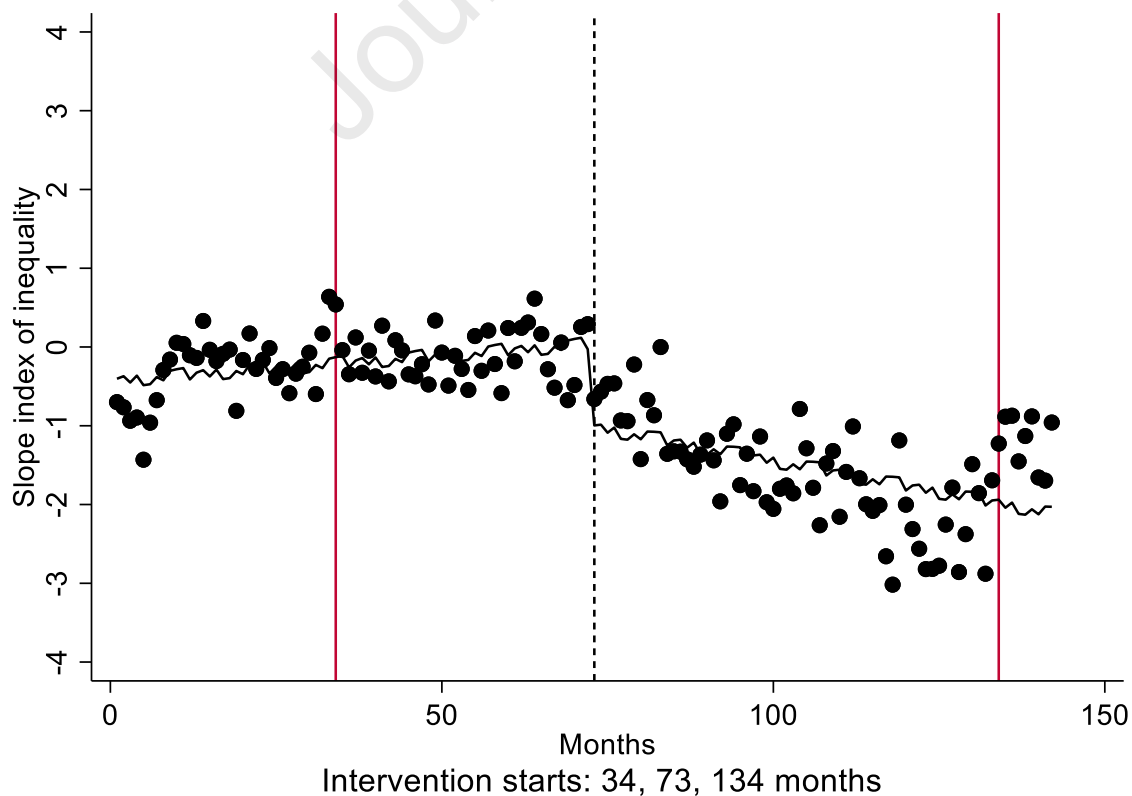


Table 4. Monthly SII of EBF at three and six months, after the implementation of the extended maternity leave, the EBF primary health care goal and after the COVID-19 pandemic. Chile 2009-2020.

Intervention	SII of EBF prevalence change (95% CI)	
	3 months	6 months
Extended maternity leave, 2011		
EBF change after ML (β_2)	-0.10 (-0.48, 0.27)	-0.21 (-0.56, 0.12)
Change in EBF trend from Nov. 2011– Dec. 2014 relative to Jan. 2009–Oct. 2011 (β_3)	0.00 (-0.00, 0.02)	-0.02 (-0.03,- 0.00)
Post-intervention trend (monthly change from Nov. 2011- Dec.2014)	0.02 (0.01, 0.03)	0.00 (-0.01, 0.01)
Primary health care goal, 2015		
EBF change after P4P (β_2)	-0.36 (-0.63, -0.09)	-1.05 (-1.37, -0.73)
Change in EBF trend from Jan. 2009– Dec. 2014 relative to Jan. 2015–Nov. 2020 (β_3)	-0.02 (-0.03, -0.01)	-0.02 (-0.03,- 0.01)
Post-intervention trend (monthly change from Jan. 2015- Nov.2020)	-0.00 (-0.01, 0.00)	-0.01 (-0.02, -0.00)
COVID-19 Pandemic, 2020		
EBF change after COVID-19 (β_2)	-0.45 (-1.17, 0.27)	1.44 (0.92, 1.97)
Change in EBF trend from Jan. 2015– March. 20 relative to April. 2020–Nov. 2020 (β_3)	0.17 (0.03, 0.32)	-0.03 (-0.18, 0.10)
Post-intervention EBF trend (monthly change from April. 2020- Nov.2020)	0.17 (0.02, 0.31)	-0.06 (-0.21, 0.08)

Supplemental table 1. Details and explanation of each of the three-time events included in the interrupted time series analyses.

Extended maternity leave	In October 2011, 12 extra weeks were added to previous 12 weeks of maternity leave (ML), bringing the total to 24 weeks (five and a half months). In addition, more flexible norms were put in place to allow women with informal jobs to access ML. However, women with informal jobs needed to have health insurance payment of at least six months in the 12 months before pregnancy and pension scheme payments of at least six months in the previous 12 months before pregnancy ¹ .
Pay for performance (P4P) strategy to promote EBF at six months in primary healthcare (15)	The pay for performance (P4P) strategy to promote EBF at six-months primary healthcare is described as an incentive paid to primary healthcare professionals for achieving primary healthcare goals previously decreed by law. The P4P strategy included: individual and group counselling with midwife or nutritionist, specialised training for health professionals in primary healthcare, specialised counselling for mothers and their families
COVID-19 pandemic up to November 2020	On 15 th March all educational institutions were closed until November 2020 and remote work was encouraged. From 22 nd March, the country was under curfew from 9pm to 5am. In May and June 2020 most northern and central Chilean regions were in lockdown. Southern regions had fewer municipalities under lockdown up to November 2020 ² . From April to November 2020 public healthcare centres focused their activities on COVID-19 cases traceability, cancelling most health check-ups.

¹ Gobierno de Chile. Ley 20545 Modifica las Normas de Protección a la Maternidad e Incorpora el Permiso Postnatal Parental [InternetV]. Chile: Gobierno de Chile; 2011. Available from: <https://www.leychile.cl/Navegar?idNorma=1030936>

² https://es.wikipedia.org/wiki/Confinamiento_por_la_pandemia_de_COVID-19_en_Chile