

Common risk factors for major noncommunicable disease, a systematic overview of reviews and commentary: the implied potential for targeted risk reduction

Ruth Peters , Nicole Ee, Jean Peters, Nigel Beckett, Andrew Booth, Kenneth Rockwood and Kaarin J. Anstey

Abstract: Noncommunicable disease now contributes to the World Health Organization top 10 causes of death in low-, middle- and high-income countries. Particular examples include stroke, coronary heart disease, dementia and certain cancers. Research linking clinical and lifestyle risk factors to increased risk of noncommunicable disease is now well established with examples of confirmed risk factors, including smoking, physical inactivity, obesity and hypertension. However, despite a need to target our resources to achieve risk reduction, relatively little work has examined the overlap between the risk factors for these main noncommunicable diseases. Our high-level review draws together the evidence in this area. Using a systematic overview of reviews, we demonstrate the likely commonality of established risk factors having an impact on multiple noncommunicable disease outcomes. For example, systematic reviews of the evidence on physical inactivity and poor diet found each to be associated with increased risk of cancers, coronary heart disease, stroke, diabetes mellitus and dementia. We highlight the potential for targeted risk reduction to simultaneously impact multiple noncommunicable disease areas. These relationships now need to be further quantified to allow the most effective development of public health interventions in this area.

Keywords: non-communicable disease, dementia, heart disease, cancer, diabetes, hypertension, obesity, physical activity, hyperten, air pollution

Received: 8 July 2019; revised manuscript accepted: 13 September 2019.

Introduction

A world with inevitably limited resources requires prioritization of those resources and the arena of public health is no exception. As the world faces unprecedented numbers of older adults and levels of noncommunicable disease (NCD),¹ there has been an increased orientation towards strategies for risk reduction, NCD prevention² and effective ways to support healthy ageing.³ The most recent NCD area to rise to prominence, partly due to our ageing population, is dementia.⁴ The last 20–30 years has seen an exponential rise in research on the identification and understanding of dementia risk factors. This began with investigation of single risk factors, for example,^{5–7} clinical trials^{8–10} and evidence synthesis,^{11–13} most recently

moving towards a developing understanding of the impact of multiple co-occurring risk factors¹⁴ and multifactorial risk reduction.^{15–17}

In 2016, dementia also appeared for the first time as one of five NCDs ranked in the World Health Organization (WHO) top 10 causes of death globally alongside other NCD categories, coronary heart disease (CHD), stroke, diabetes mellitus (DM) and cancers.¹⁸ When evaluated across lower-, middle- and high-income economies, CHD and stroke maintain their places consistently within the top five causes of death and top causes of NCD-related death. DM is present in all but the lowest income category and dementia is within the top five causes of death in

Ther Adv Chronic Dis

2019, Vol. 10: 1–14

DOI: 10.1177/
2040622319880392

© The Author(s), 2019.
Article reuse guidelines:
sagepub.com/journals-
permissions

Correspondence to:

Ruth Peters
Neuroscience Research
Australia, Barker Street,
Randwick, Sydney, New
South Wales, 2031,
Australia

University of New South
Wales, Sydney, NSW,
Australia

Imperial College London,
London, UK

r.peters@neura.edu.au

Nicole Ee
Kaarin J. Anstey
University of New South
Wales, Sydney, NSW,
Australia

Jean Peters
Andrew Booth
University of Sheffield,
Sheffield, UK

Nigel Beckett
Guys and St Thomas's
NHS Foundation Trust,
London, UK
Imperial College London,
London, UK

Kenneth Rockwood
Dalhousie University,
Halifax, Nova Scotia,
Canada

upper-middle- and high-income countries. Amongst the cancers, trachea, bronchus and lung, liver and stomach, colon and rectum and breast cancers also ranked within the top 10 causes of death in upper-middle- and high-income countries in 2016.¹⁸ Importantly, dementia and other NCDs, such as CHD, share more than their ranking in the WHO top 10 causes of death. They are also characterized by multiple overlapping lifestyle and clinical risk factors (for example, obesity, physical inactivity, high blood pressure), acting singly or together to increase risk, and may all benefit from risk reduction efforts.^{19–22} Depression, diabetes or impaired glucose tolerance, high cholesterol, high blood pressure, obesity, unhealthy diet, smoking, physical inactivity and excess alcohol consumption have been identified by the WHO Global Health Observatory data as common and preventable risk factors that underlie most NCDs.²³ Increasing evidence also points to air pollution as an emerging risk factor for dementia, heart and cardiovascular disease and lung cancer.^{1,14}

To more accurately model the influence of risk factor prevalence and risk factor modification on incident disease and health outcomes, and to effectively target risk reduction strategies, we now need to understand the overlap between risk factors and the main NCDs. The aim of this systematic overview of reviews was to identify and evaluate the evidence for overlapping risk factors between dementia, DM, CHD, stroke and selected cancers.

Methods

We completed a detailed systematic overview of reviews.²⁴ That is, we reviewed published overviews and reviews reporting on one or more common risk factors and one or more of the NCD categories, dementia, DM, CHD, stroke and selected cancers. A written protocol was registered with the International Prospective Register of Systematic Reviews (PROSPERO; CRD42019129265) and the review was reported in accordance with the Preferred Reporting Items for Systematic Reviews and Meta-Analyses (PRISMA) checklist.²⁵

The Cochrane Database of Systematic Reviews, and Ovid MEDLINE were searched from inception to 1 March 2019. The following NCD keywords were used: dementia, Alzheimer's (or Alzheimer or Alzheimers) disease, diabetes, ischaemic (or ischemic) heart disease, coronary

artery disease, coronary heart disease, myocardial infarction, stroke, cancer, together with the following keywords for the nine common risk factors: depression, cholesterol, hypertension, obesity, diet, smoking, physical activity, alcohol or air pollution. Supplementary text file 1 provides full details of the search terms. Additional data sources included a review of guidelines published by the WHO, the UK National Institute for Health and Care Excellence, systematic reviews commissioned by the Agency for Healthcare Research and Quality and expert recommendation.

Given the volume of data in this area and the need to include the most up-to-date evidence synthesis, we used a pragmatic selection method, adapted from guideline development methodology, selecting the most comprehensive and recent evidence sources.²⁶ To achieve this we selected published overviews or reviews (sometimes referred to as umbrella reviews) or, where these were unavailable, single systematic reviews. We selected the most recently published review in each area first examining those published within the last 5 years and only looking at earlier literature where recent publications were not available. If two publications were available from the same year, the publication with the most recent search dates was used. Reviews were required to report meta-analyses of prospective studies reporting an association between one or more of the nine selected risk factors and one or more of the selected incident NCDs. Established and prevalent risk factors were selected (based on those recognized by the WHO www.who.int/healthinfo/global_burden_disease/global_health_risks/en) to include depression, high cholesterol, high blood pressure, obesity, diet (whole dietary pattern), smoking, physical inactivity, excess alcohol consumption or air pollution). The NCDs included: dementia [all-cause or Alzheimer's disease (AD) or vascular dementia (VaD)], DM, CHD (defined as coronary artery disease, ischaemic heart disease or myocardial infarction), stroke (ischaemic or haemorrhagic) or cancer (of all types or of the lung, liver, bowel or breast in accordance with the cancer types featured in the WHO top 10 causes of death).¹⁸ Meta-analyses of prospective longitudinal cohort studies were selected to provide the most robust information on relationships between risk factor exposure and disease development. Cross-sectional and case-control studies were excluded because they do not provide sufficiently

robust data with regard to the evaluation of causality between risk factors and disease outcomes. Furthermore, clinical trials were not included, as the focus of this research was on the relationship between risk factors and disease rather than on risk reduction. We also excluded nonsystematic reviews, narrative reviews, reviews focusing solely on dietary constituents, as opposed to whole diet and reviews including studies conducted in secondary prevention populations (i.e. in populations that already have one of the five selected NCD outcomes). The varied source data also meant that it was not possible to statistically synthesize the data nor to fully take subgroups, such as the age of risk factor exposure, into account; however, where differing results were reported from broad subgroups such as mid/late-life, pre/postmenopausal women, these are reported.

All titles were screened for relevance. Those that were selected as relevant, progressed to abstract screening by two independent reviewers. Disagreement between reviewers was resolved by discussion and further full-text screening took place, with disagreement similarly resolved by discussion. Data extraction was completed by one reviewer and checked by a second independent reviewer. Data on key population and demographic information, risk factor classification, outcome identification and pooled values for the associations between risk factors and outcomes were extracted into an *a priori* designed extraction table. Reviews were assessed for bias using the revised instrument, AMSTAR-2 (A MeaSurement Tool to Assess systematic Reviews 2) criteria.²⁷

Results

Searching and expert recommendation resulted in 1374 unique records. There were 1173 records rejected at the title screening stage for not reporting results for overview or single systematic reviews relevant to the selected risk factors and NCD categories. The remaining 201 articles were screened at abstract stage, 125 were rejected and 76 were examined at full-text screening (Figure 1). A further 49 articles^{12,13,28–74} were rejected at the full-text stage, primarily due to their relative redundancy given the availability of a more recent review or more current search dates. Overall, nine of these articles^{38,44–47,58,62,63,68} were excluded due to reasons such as nonstandard or inappropriate exposure or outcome measures, data derived from

only one cohort study or unclear methodology (Supplementary Table 4 and supplementary reference list), leaving 27 reviews^{11,14,75–99} to be included.

Of the 27 publications selected for inclusion, 5 were overview reviews and 22 were single systematic reviews. All but one review⁷⁸ were published within the last 5 years. From these 27 articles, 89 relevant unique meta-analyses and 1 systematic review, with a figurative rather than statistical forest plot summarizing the data, were examined and extracted (Supplementary Table 1). Overall data on risk factors and dementia, DM, CHD and stroke was reasonably comprehensive. No reviews reported on the relationship between diabetes and cholesterol, diabetes and alcohol, CHD and smoking, stroke and depression, and of the five NCD categories, the least data were available for cancer (Table 1). Table 1 shows the extent of the evidence and the direction of the reported relationships between the risk factors and NCD disease outcomes.

The most consistent and comprehensive evidence was available for diet and physical activity. High adherence to a Mediterranean diet was shown to reduce risk across all five NCDs by between 4% and 36%,^{11,77,90,93,98} and higher levels of physical activity similarly resulted in risk reduction of between 13% and 45%.^{11,75,77,94} The detrimental effects of smoking and obesity were also evident from available data. Smoking was associated with an increased risk of AD, any dementia, VaD, DM, stroke, and lung, bowel and breast cancer with increased risk estimates variously reported between 9% and 633%.^{11,77,78,87,89,95} Obesity was associated with an increased risk of AD, DM, CHD, stroke and liver and bowel cancer by between 33% and 588%.^{11,77,81,85} Obesity may also increase the risk of breast cancer in postmenopausal women.⁸⁵ No association was found between obesity and VaD¹¹ and an anomalous protective effect was found for lung cancer that was reported to be derived from a small sample of heterogeneous studies.⁸⁵ High blood pressure was associated with a 7–75% increased risk of VaD, DM, CHD, stroke and breast cancer,^{11,77,83,84,96} but no association was found for AD.¹¹ The evidence for excess alcohol consumption was the least consistent across the NCDs, with three meta-analyses showing significant associations with

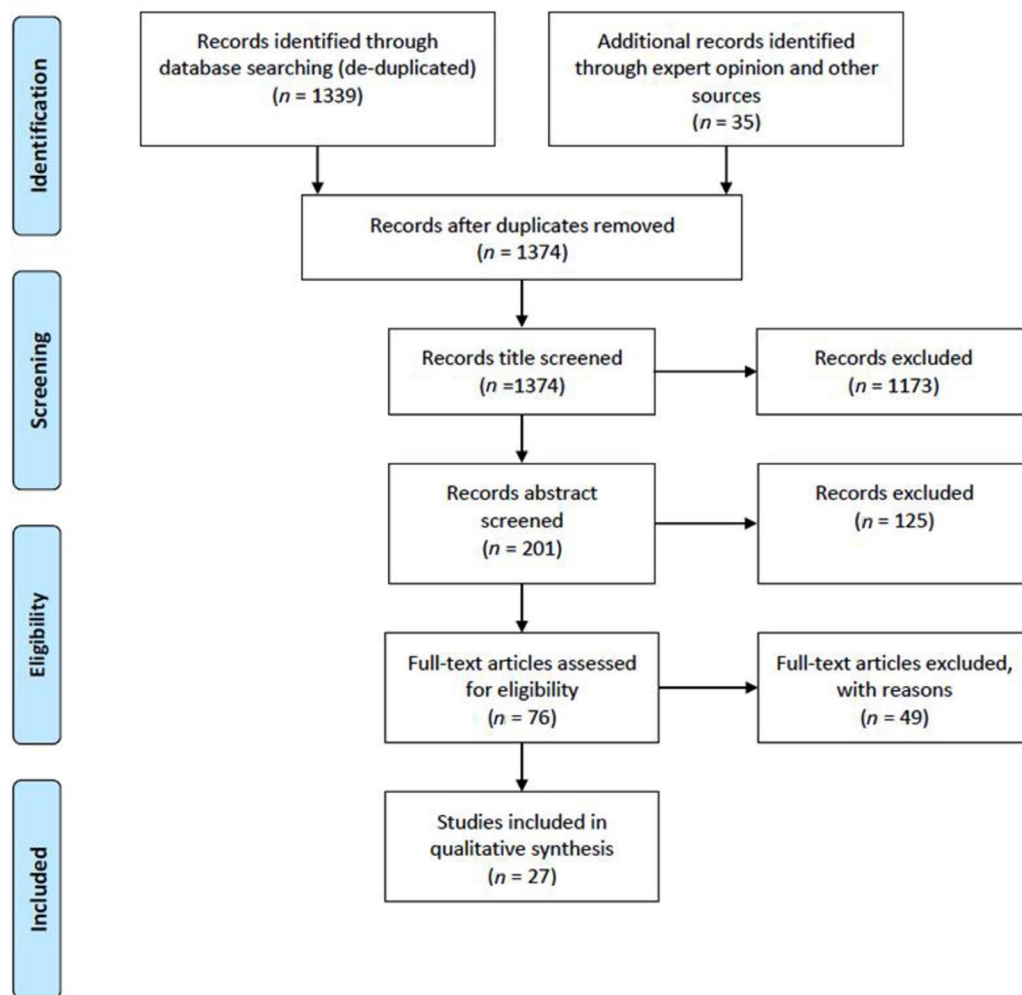


Figure 1. PRISMA flow chart.
PRISMA, Preferred Reporting Items for Systematic Reviews and Meta-Analyses

increased risk and six showing no association. Excess alcohol consumption was associated with an increased risk of stroke, bowel and breast cancer (between 20% and 50%).^{11,76,97} However, no association was found between excess alcohol consumption and the dementias,¹¹ CHD,⁹¹ lung⁷⁶ or liver cancer.⁹⁹

Whilst less evidence was available for the remaining risk factors, broad associations were reported between air pollution and an increased risk of dementia,¹⁴ DM,⁷⁷ stroke,⁹² lung cancer⁸² and CHD.⁷⁹ Depression was found to be associated with an increased risk of AD, any dementia, DM and CHD by between 30% and 104%,^{11,77,80} but had no effect on VaD risk.¹¹ High cholesterol was associated with a 20–24%

increased risk of CHD¹¹ and (when present in midlife) was associated with a doubling in the risk of AD⁸⁸ but had no effect on any dementia, VaD¹¹ or stroke.⁸⁶ Whilst the current data are insufficient to allow the building of a structural equation model, the complexity and overlaps within these relationships can be shown diagrammatically, see Figure 2. Figure 2 also provides additional contextual information, beyond the scope of this review, by highlighting the potential further relationships between the risk factors themselves and between NCD categories. For example, poor diet and lack of physical activity may increase risk of obesity with consequent increased risk of hypertension, and stroke and diabetes are known to raise the risk of later dementia.^{100,101}

Table 1. Showing the direction of relationships and extent of the systematic review and meta-analysis evidence for the associations between the selected risk factors and noncommunicable diseases.

	Dietary pattern	Physical activity	Smoking	Air pollution	High blood pressure	Obesity	Depression	High cholesterol	Excess alcohol consumption
Dementia	Any dementia	↓↓ Anstey and colleagues ¹¹	↑↑ Anstey and colleagues ¹¹	↑↑ PM _{2.5} Peters and colleagues ¹⁴	↑↑ Anstey and colleagues ¹¹	↑ Anstey and colleagues ¹¹	↑↑ Anstey and colleagues ¹¹	≠ Anstey and colleagues ¹¹	≠ Anstey and colleagues ¹¹
		↓↓ Anstey and colleagues ¹¹	↑↑ NO _x , NO _x Peters and colleagues ¹⁴		≠ Anstey and colleagues ¹¹	≠ Late life Anstey and colleagues ¹¹			
AD	↓↓ Anstey and colleagues ¹¹	↓↓ Anstey and colleagues ¹¹	↑↑ Anstey and colleagues ¹¹		≠ Anstey and colleagues ¹¹	↑↑ Anstey and colleagues ¹¹	↑↑ Anstey and colleagues ¹¹	↑↑ Mid life Anstey and colleagues ¹¹	≠ Anstey and colleagues ¹¹
VaD		↓↓ Anstey and colleagues ¹¹	↑↑ Anstey and colleagues ¹¹		↑↑ Anstey and colleagues ¹¹			≠ Late life Anstey and colleagues ¹¹	
DM	↓↓ Bellou and colleagues ⁷⁷	↓↓ Bellou and colleagues ⁷⁷	↑↑ Bellou and colleagues ⁷⁷	↑↑ Bellou and colleagues ⁷⁷	↑↑ Bellou and colleagues ⁷⁷	↑↑ Bellou and colleagues ⁷⁷	↑↑ Bellou and colleagues ⁷⁷		
Stroke	↓↓ Psaltopoulou and colleagues ⁹⁰	↓↓ Wahid and colleagues ⁷⁴	↑↑ Peters and colleagues ⁸⁹	↑↑ Scheers and colleagues ⁷²	↑↑ Huang and colleagues ⁸⁴	↑↑ Global Burden of Metabolic Risk Factors for Chronic Diseases Collaboration and colleagues ⁸¹		≠ Lindbohm and colleagues ⁸⁶	↑↑ Zhang and colleagues ⁸⁷
CHD	↓↓ Galbete and colleagues ⁹⁸	↓↓ Wahid and colleagues ⁷⁴		↑↑ PM ₁₀ Cesaroni and colleagues ⁷⁹	↑↑ Wei and colleagues ⁹⁶	↑↑ Global Burden of Metabolic Risk Factors for Chronic Diseases Collaboration and colleagues ⁸¹	↑↑ Gan and colleagues ⁸⁰	↑↑ Peters and colleagues ⁸⁸	≠ Roerecke and Rehm ⁷¹

(Continued)

Table 1. (Continued)

	Dietary pattern	Physical activity	Smoking	Air pollution	High blood pressure	Obesity	Depression	High cholesterol	Excess alcohol consumption
Cancer	All cancers	↓↓ de Rezende and colleagues ⁷⁵	.	≠ PM _{2.5} Cesaroni and colleagues ⁷⁹
	Breast	↓↓ Schwingshackl and colleagues ⁹³	↑↑ Wang and colleagues ⁹⁵	.	↑↑ Han and colleagues ⁸³	↑↑ Postmenopausal Kygriou and colleagues ⁸⁵	.	.	↑↑ Bagnardi and colleagues ⁷⁶
Bowel	↓↓ Schwingshackl and colleagues ⁹³	↓↓ de Rezende and colleagues ⁷⁵	↑↑ Botteri and colleagues ⁷⁸	.	.	↑↑ Kygriou and colleagues ⁸⁵	.	.	↑↑ Bagnardi and colleagues ⁷⁶
Lung	.	↓↓ de Rezende and colleagues ⁷⁵	↑↑ O'keefe and colleagues ⁸⁷	↑↑ PM _{2.5} Hamra and colleagues ⁸²	.	↓↓ Kygriou and colleagues ⁸⁵	.	.	≠ Bagnardi and colleagues ⁷⁶
Liver	.	.	.	≠ PM ₁₀ Hamra and colleagues ⁸²	.	↑↑ Kygriou and colleagues ^{83,85}	.	.	≠ Turati and colleagues ⁹⁹

↑↑, denotes probable positive association; ↓↓, denotes probable negative association; ↑, denotes possible positive association (meta-analyses show mixed but generally positive outcomes), ↓, denotes possible negative association (meta-analyses show mixed but generally negative outcomes); ≠, denotes no association found; ., denotes no review identified. AD, Alzheimer's disease; CHD, coronary heart disease; DM, diabetes mellitus; PM, particulate matter.

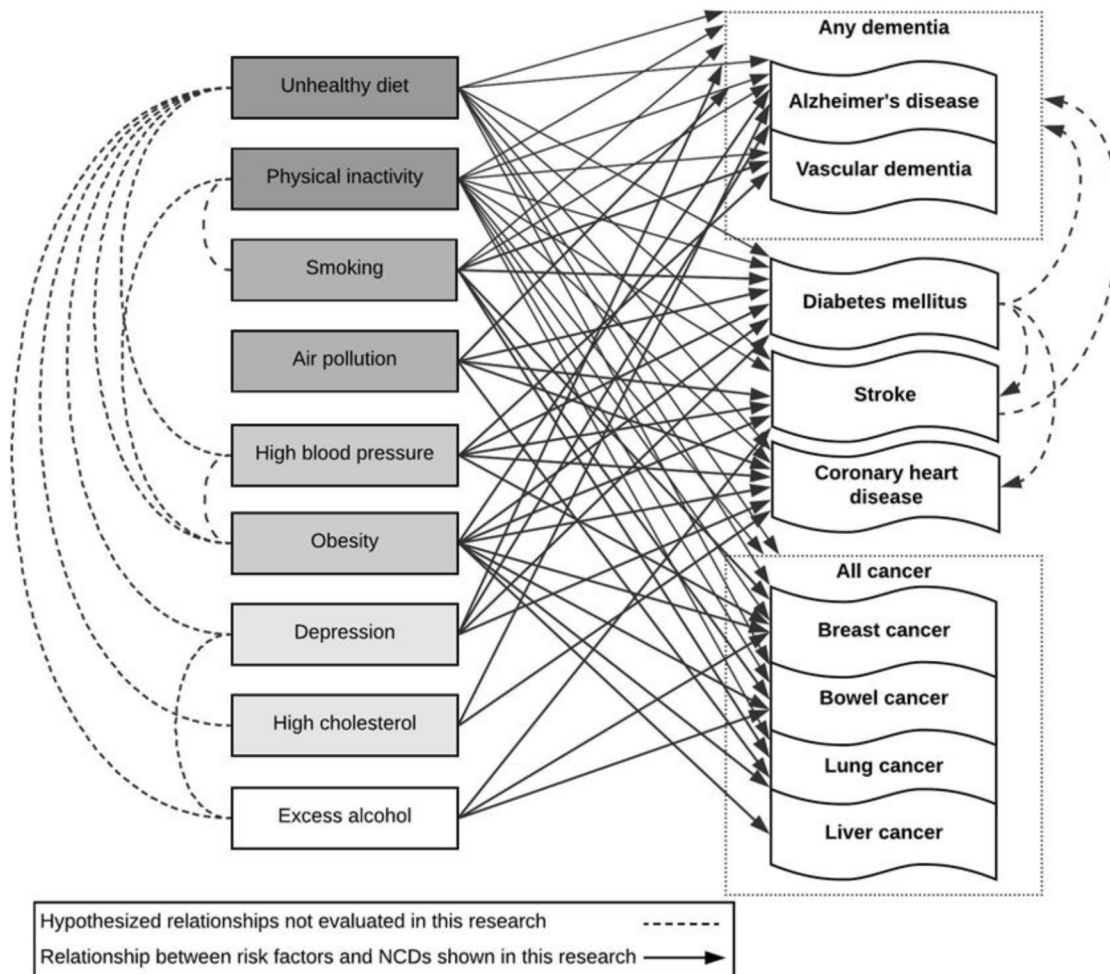


Figure 2. Diagram showing the reported relationships between established risk factors and NCDs. NCD, noncommunicable disease.

Overall, probable or possible associations were observed between all risk factors and at least two of the five NCDs. The strongest protective factors were healthy diet and physical activity, which were shown to impact risk across all five NCDs. Air pollution was linked to all five NCDs with the strongest evidence for fine particle ($PM_{2.5}$) exposure. Depression, high blood pressure and obesity were linked to all the NCDs for which there was available data, with some variability amongst dementia and cancer subtype.

Quality rating

The AMSTAR-2 was employed to assess the quality of selected reviews. Of the 27 included publications, 11 (41%) were characterized as critically low

quality, 12 (44%) of low quality and 4 (15%) of moderate quality (Supplementary Table 2).

Discussion

Summary of findings

Both healthy dietary pattern and physical activity were consistently associated with reduced risk across the NCD categories,^{11,75,77,90,93,94,98} and a comprehensive body of evidence substantiated these findings. Smoking and air pollution were also associated with increased risk of incident NCDs,^{11,14,77-79,82,87,89,92,95} and to a lesser extent, so were high blood pressure and obesity.^{11,77,81,84,85,96} The evidence for depression and high cholesterol was suggestive of increased risk

for the cardiovascular rather than the cancer outcomes,^{11,77,80,86,88} with the weakest evidence for alcohol as a common risk factor.^{11,76,91,97,99}

Strengths and limitations

The strengths of our review include the use of a pragmatic high-level but systematic overview of reviews strategy. This has allowed us to deliver a broad evidence-based overview, drawing together information on the relationships between prevalent NCD and common risk factors. This has been further facilitated by the recent rise in published overview and single systematic reviews examining single disease or single risk factors. The global ageing population, rising prevalence of concomitant lifestyle and NCD risk factors and disease also make research across common NCDs both timely and important. Our review is an essential step towards a greater public health understanding of the interacting relationships driving NCDs. It has allowed us to document and highlight the overlapping risk factors and will help direct future work in this area.

Limitations inherent in drawing together existing reviews, and in particular overview reviews, inevitably include the risk of propagating existing bias. This may include selection bias driven by the inclusion of particular participants in cohort studies, inclusion of particular cohort studies or cohort study results in systematic reviews and meta-analyses and the inclusion of particular reviews in overview reviews. As in any review, further bias may come from drawing together varied reporting of results, analytical approaches, assessment of risk factor exposure, accounting for confounders and the possibility of reporting error. The AMSTAR-2 assessment tool, although the most appropriate, is not designed to assess overview reviews and, in part due to its rigour, is likely to assess anything other than very recent reviews as lower quality. Bias in overview reviews may also come from the age of the constituent studies with older studies potentially included in greater numbers of meta-analyses, and possibly also of lower quality. Our methods too, while systematized, may be a source of bias. Overall our review process was pragmatic and rigorous but inevitably open to bias. Taking a top-level focus and using existing reviews and meta-analyses meant that we were able to review a wide area but were unable to statistically synthesize the evidence or revisit the original cohort studies or participant level data where (1) evidence although

present, might feature only to a lesser degree, for example for AD and hypertension, or (2) where risk relationships are long established and meta-analyses may never have been performed, for example smoking and CHD. Caution also needs to be applied where constituent studies were themselves rated poorly in terms of risk of bias. Furthermore, in taking a pragmatic approach to the classification of NCDs we may have missed some subtleties in the varied cancer diagnoses and inadvertently introduced a false level of certainty with regard to dementia type where overlapping pathology, rather than definitive diagnosis, is acknowledged as the most common occurrence.¹⁰² Finally, for dementia at least, there is some evidence that age of exposure to the different risk factors may moderate their impact^{103–105} and we were unable to take this into account. Nevertheless, our findings are consistent in showing the complexity and overlap of the relationships in this area.

Implications and research recommendations

Although our results suggest that exposure to individual risk factors may act to concurrently raise the risk of more than one NCD we did not find sufficient evidence to allow us to extract or infer the strength of these relationships. Furthermore, we know that risk factors often co-occur¹⁰⁶ and, at least for dementia, there is a dose response with greater numbers of risk factors conferring higher levels of risk.¹⁴ In addition, neither the risk factors nor the outcomes are independent. For example, both stroke and diabetes increase risk of dementia and obesity raises risk of diabetes, high blood pressure and dementia.^{101,107} In fact, it is more likely that the true relationships are best represented as a web of influence with relationships within and between both risk factors and outcomes. These putative relationships now need to be clarified using high quality longitudinal participant level data. Suitable datasets should represent relevant global populations and have sufficiently long follow up to evaluate confounded and competing relationships and to allow sufficient confidence about inferred causal relationships, thereby avoiding issues such as reverse causality.¹⁰⁰ Further risk factors and outcomes may exist beyond those examined here and these too need to be investigated.

Our review also noted age as a risk factor common to each of the NCDs. Although typically considered a nonmodifiable risk factor, the risk it contributes varies between individuals. Variability in

the risk of death for people of the same age was labelled as ‘frailty’ in 1979.¹⁰⁸ The concept was later generalized to describe variability in the risk of an adverse outcome for people with the same degree of exposure. It is commonly implemented as a term that accounts for unobserved random effect in proportional hazards models. As reviewed elsewhere, frailty is also operationalized as a clinical syndrome or as a state.¹⁰⁹ As noted there, in either guise, it is an important independent risk for common late-life illnesses, including heart disease, osteoporotic fracture and dementia. Recently, the degree of frailty was found to moderate the relationship between neuropathologically defined AD and its clinical expression as dementia. Inasmuch as some degree of frailty may be modifiable, then understanding its role in disease is important. Further, understanding what it is about ageing that makes it such a common risk factor may lead to interventions that can reduce the burden of age.¹¹⁰

Wider context and the next steps

In this overview, we have highlighted the likely overlap between risk factors for NCDs and called for further work to quantify the strength and direction of the relationships between risk factors and incident NCDs. In addition, given the likely complexity of the associations, we have also highlighted the need to evaluate the relationships between the risk factors themselves and between the disease states. This is timely. The changing prevalence of NCD around the world makes further understanding of these complex inter-relationships a priority. The WHO recorded the top two global causes of death in 2000 and 2016 as CHD and stroke, but by 2016, AD and other dementias and trachea bronchus and lung cancers were present. In wealthier countries in 2016, NCDs were even more strongly represented alongside CHD, stroke and DM in lower-middle- and low-income countries.¹⁸ Furthermore, research looking at population-attributable risk for established dementia risk factors reported the possibility of reducing dementia risk by up to 28% (taking account of overlaps between risk factors), with some of the biggest drivers of increased risk identified as physical inactivity and smoking.¹⁰⁶ This analysis now needs to be extended to incorporate wider NCDs. Once we have clarified the strength of the relationships in the web of

influence between the risk factors and disease states our next step must be to extend this to include population-attributable risk, design and evaluation of informed and targeted NCD risk reduction intervention and eventually, economic impact. The main NCDs and their risk factors are connected and prevalent; prevention is vital, but resources inevitably limited. An interactive economic model, where we can explore and evaluate the impact of risk reduction strategies on multiple interacting disease states, would be an invaluable public health tool. Such a tool is currently conceptual but represents a goal towards which all interested parties should be working.

In our high-level overview of the epidemiology we demonstrate the interconnected and overlapping relationships between common risk factors and common NCDs. Gaining a greater understanding and taking greater account of these relationships will facilitate more appropriate and targeted risk reduction, and this should now be our goal.

Acknowledgements

The authors acknowledge funding from the Australian National Health and Medical Research Council (NHMRC), the NHMRC National Institute for Dementia Research and the NHMRC Dementia Collaborative Research Centre.


Funding

The author(s) disclosed receipt of the following financial support for the research, authorship, and/or publication of this article: The authors are supported by funding from a variety of sources including the Australian National Health and Medical Research Centre but received no financial support directed specifically for the research, authorship, and/or publication of this article.

Conflict of interest statement

The author(s) declared no potential conflicts of interest with respect to the research, authorship, and/or publication of this article.

ORCID iD

Ruth Peters  <https://orcid.org/0000-0003-0148-3617>

Supplemental material

Supplemental material for this article is available online.

References

1. Wang H, Naghavi M, Allen C, *et al.* Global, regional, and national life expectancy, all-cause mortality, and cause-specific mortality for 249 causes of death, 1980–2015: a systematic analysis for the Global Burden of Disease Study 2015. *Lancet* 2016; 388: 1459–1544.
2. Beaglehole R, Bonita R, Horton R, *et al.* Priority actions for the non-communicable disease crisis. *Lancet* 2011; 377: 1438–1447.
3. World Health Organization. *World report on ageing and health*. Geneva: World Health Organization, 2015.
4. World Health Organization. *Dementia: a public health priority*. Geneva: World Health Organization, 2012.
5. Skoog I, Lernfelt B, Landahl S, *et al.* 15-year longitudinal study of blood pressure and dementia. *Lancet* 1996; 347: 1141–1145.
6. Gustafson DR, Backman K, Waern M, *et al.* Adiposity indicators and dementia over 32 years in Sweden. *Neurology* 2009; 73: 1559–1566.
7. Mielke MM, Zandi PP, Sjogren M, *et al.* High total cholesterol levels in late life associated with a reduced risk of dementia. *Neurology* 2005; 64: 1689–1695.
8. Forette F, Seux ML, Staessen JA, *et al.* Prevention of dementia in randomised double-blind placebo-controlled Systolic Hypertension in Europe (Syst-Eur) trial. *Lancet* 1998; 352: 1347–1351.
9. Valenzuela M and Sachdev P. Can cognitive exercise prevent the onset of dementia? Systematic review of randomized clinical trials with longitudinal follow-up. *Am J Geriatr Psychiatry* 2009; 17: 179–187.
10. Peters R, Beckett N, Forette F, *et al.* Incident dementia and blood pressure lowering in the hypertension in the very elderly trial cognitive function assessment (HYVET-COG): a double-blind, placebo-controlled trial. *Lancet Neurol* 2008; 7: 683–689.
11. Anstey KJ, Ee N, Eramudugolla R, *et al.* A systematic review of meta-analyses that evaluate risk factors for dementia to evaluate the quantity, quality and global representativeness of evidence. *J Alzheimers Dis* 2019; 70: S165–S186.
12. Bellou V, Belbasis L, Tzoulaki I, *et al.* Systematic evaluation of the associations between environmental risk factors and dementia: an umbrella review of systematic reviews and meta-analyses. *Alzheimers Dement* 2017; 13: 406–418.
13. Xu W, Tan L, Wang HF, *et al.* Meta-analysis of modifiable risk factors for Alzheimer's disease. *J Neurol Neurosurg Psychiatry* 2015; 86: 1299–1306.
14. Peters R, Booth A, Rockwood K, *et al.* Combining modifiable risk factors and risk of dementia: a systematic review and meta-analysis. *BMJ Open* 2019; 9: e022846.
15. Rosenberg A, Ngandu T, Rusanen M, *et al.* Multidomain lifestyle intervention benefits a large elderly population at risk for cognitive decline and dementia regardless of baseline characteristics: the FINGER trial. *Alzheimers Dement* 2018; 14: 263–270.
16. van Charante EPM, Richard E, Eurelings LS, *et al.* Effectiveness of a 6-year multidomain vascular care intervention to prevent dementia (preDIVA): a cluster-randomised controlled trial. 2016; 388: 797–805.
17. Vellas B, Carrie I, Gillette-Guyonnet S, *et al.* MAPT study: a multidomain approach for preventing Alzheimer's disease: design and baseline data. *J Prev Alzheimers Dis* 2014; 1: 13–22.
18. World Health Organization. The top 10 causes of death, <https://www.who.int/news-room/fact-sheets/detail/the-top-10-causes-of-death> (2019, accessed 21 May 2019).
19. World Health Organization. *Risk Reduction of Cognitive Decline and Dementia: WHO Guidelines*. Geneva: World Health Organization, 2019.
20. Meschia JF, Bushnell C, Boden-Albala B, *et al.* Guidelines for the primary prevention of stroke: a statement for healthcare professionals from the American Heart Association/American Stroke Association. *Stroke* 2014; 45: 3754–3832.
21. Bayo J, Molina R, Perez J, *et al.* SEOM clinical guidelines to primary prevention of cancer (2018). *Clin Transl Oncol* 2019; 21: 106–113.
22. Arnett DK, Blumenthal RS, Albert MA, *et al.* 2019 ACC/AHA guideline on the primary prevention of cardiovascular disease. *J Am Coll Cardiol*. 2019; 26029. DOI: 10.1016/j.jacc.2019.03.010.
23. World Health Organization. Global Health Observatory (GHO) data: risk factors, https://www.who.int/gho/ncd/risk_factors/en/ (2019, accessed 21 May 2019).
24. Grant MJ and Booth A. A typology of reviews: an analysis of 14 review types and associated

- methodologies. *Health Info Libr J* 2009; 26: 91–108.
25. Moher D, Shamseer L, Clarke M, *et al.* Preferred reporting items for systematic review and meta-analysis protocols (PRISMA-P) 2015 statement. *Syst Rev* 2015; 4: 1.
 26. World Health Organization. *WHO handbook for guideline development*, 2nd ed. Geneva: World Health Organization, 2014.
 27. Shea BJ, Reeves BC, Wells G, *et al.* AMSTAR 2: a critical appraisal tool for systematic reviews that include randomised or non-randomised studies of healthcare interventions, or both. *BMJ* 2017; 358: j4008.
 28. Al Tunajji H, Davis JC, Mackey DC, *et al.* Population attributable fraction of type 2 diabetes due to physical inactivity in adults: a systematic review. *BMC Public Health* 2014; 14: 469.
 29. Albuquerque RC, Baltar VT and Marchioni DM. Breast cancer and dietary patterns: a systematic review. *Nutr Rev* 2014; 72: 1–17.
 30. Alhazmi A, Stojanovski E, McEvoy M, *et al.* The association between dietary patterns and type 2 diabetes: a systematic review and meta-analysis of cohort studies. *J Hum Nutr Diet* 2014; 27: 251–260.
 31. Ariesen MJ, Claus SP, Rinkel GJ, *et al.* Risk factors for intracerebral hemorrhage in the general population: a systematic review. *Stroke* 2003; 34: 2060–2065.
 32. Balti EV, Echouffo-Tcheugui JB, Yako YY, *et al.* Air pollution and risk of type 2 diabetes mellitus: a systematic review and meta-analysis. *Diabetes Res Clin Pract* 2014; 106: 161–172.
 33. Bell JA, Kivimaki M and Hamer M. Metabolically healthy obesity and risk of incident type 2 diabetes: a meta-analysis of prospective cohort studies. *Obes Rev* 2014; 15: 504–515.
 34. Blondell SJ, Hammersley-Mather R and Veerman JL. Does physical activity prevent cognitive decline and dementia? A systematic review and meta-analysis of longitudinal studies. *BMC Public Health* 2014; 14: 510.
 35. Di Marco LY, Marzo A, Munoz-Ruiz M, *et al.* Modifiable lifestyle factors in dementia: a systematic review of longitudinal observational cohort studies. *J Alzheimers Dis* 2014; 42: 119–135.
 36. Dinu M, Pagliai G, Casini A, *et al.* Mediterranean diet and multiple health outcomes: an umbrella review of meta-analyses of observational studies and randomised trials. *Eur J Clin Nutr* 2018; 72: 30–43.
 37. Esposito K, Chiodini P, Maiorino MI, *et al.* Which diet for prevention of type 2 diabetes? A meta-analysis of prospective studies. *Endocrine* 2014; 47: 107–116.
 38. Feigin VL, Rinkel GJ, Lawes CM, *et al.* Risk factors for subarachnoid hemorrhage: an updated systematic review of epidemiological studies. *Stroke* 2005; 36: 2773–2780.
 39. Goncalves AK, Dantas Florencio GL, Maisonnette de Atayde Silva MJ, *et al.* Effects of physical activity on breast cancer prevention: a systematic review. *J Phys Act Health* 2014; 11: 445–454.
 40. Grosso G, Mistretta A, Frigiola A, *et al.* Mediterranean diet and cardiovascular risk factors: a systematic review. *Crit Rev Food Sci Nutr* 2014; 54: 593–610.
 41. InterAct C, Spijkerman AM, van der AD, *et al.* Smoking and long-term risk of type 2 diabetes: the EPIC-InterAct study in European populations. *Diabetes Care* 2014; 37: 3164–3171.
 42. Janghorbani M, Momeni F and Mansourian M. Systematic review and metaanalysis of air pollution exposure and risk of diabetes. *Eur J Epidemiol* 2014; 29: 231–242.
 43. Koloverou E, Esposito K, Giugliano D, *et al.* The effect of Mediterranean diet on the development of type 2 diabetes mellitus: a meta-analysis of 10 prospective studies and 136,846 participants. *Metabolism* 2014; 63: 903–911.
 44. Kontogianni MD and Panagiotakos DB. Dietary patterns and stroke: a systematic review and re-meta-analysis. *Maturitas* 2014; 79: 41–47.
 45. Li C, Yang L, Zhang D, *et al.* Systematic review and meta-analysis suggest that dietary cholesterol intake increases risk of breast cancer. *Nutr Res* 2016; 36: 627–635.
 46. Lin X, Liu L, Fu Y, *et al.* Dietary cholesterol intake and risk of lung cancer: a meta-analysis. *Nutrients* 2018; 10: 185.
 47. Lu L, Mackay DF and Pell JP. Meta-analysis of the association between cigarette smoking and peripheral arterial disease. *Heart* 2014; 100: 414–423.
 48. McEvoy CT, Cardwell CR, Woodside JV, *et al.* A posteriori dietary patterns are related to risk of type 2 diabetes: findings from a systematic review and meta-analysis. *J Acad Nutr Diet* 2014; 114: 1759–1775.e4.
 49. Meng XF, Yu JT, Wang HF, *et al.* Midlife vascular risk factors and the risk of Alzheimer’s disease: a systematic review and meta-analysis. *J Alzheimers Dis* 2014; 42: 1295–1310.

50. Mente A, de Koning L, Shannon HS, *et al.* A systematic review of the evidence supporting a causal link between dietary factors and coronary heart disease. *Arch Intern Med* 2009; 169: 659–669.
51. Milton K, Macniven R and Bauman A. Review of the epidemiological evidence for physical activity and health from low- and middle-income countries. *Glob Public Health* 2014; 9: 369–381.
52. Monninkhof EM, Elias SG, Vleems FA, *et al.* Physical activity and breast cancer: a systematic review. *Epidemiology* 2007; 18: 137–157.
53. Mustafic H, Jabre P, Caussin C, *et al.* Main air pollutants and myocardial infarction: a systematic review and meta-analysis. *JAMA* 2012; 307: 713–721.
54. Namiranian N, Moradi-Lakeh M, Razavi-Ratki SK, *et al.* Risk factors of breast cancer in the Eastern Mediterranean region: a systematic review and meta-analysis. *Asian Pac J Cancer Prev* 2014; 15: 9535–9541.
55. Otaegui-Arrazola A, Amiano P, Elbusto A, *et al.* Diet, cognition, and Alzheimer's disease: food for thought. *Eur J Nutr* 2014; 53: 1–23.
56. Park SK and Wang W. Ambient air pollution and type 2 diabetes: a systematic review of epidemiologic research. *Curr Environ Health Rep* 2014; 1: 275–286.
57. Renn BN, Feliciano L and Segal DL. The bidirectional relationship of depression and diabetes: a systematic review. *Clin Psychol Rev* 2011; 31: 1239–1246.
58. Roerecke M and Rehm J. Alcohol consumption, drinking patterns, and ischemic heart disease: a narrative review of meta-analyses and a systematic review and meta-analysis of the impact of heavy drinking occasions on risk for moderate drinkers. *BMC Med* 2014; 12: 182.
59. Rugulies R. Depression as a predictor for coronary heart disease - a review and meta-analysis. *Am J Prev Med* 2002; 23: 51–61.
60. Schwingshackl L and Hoffmann G. Adherence to Mediterranean diet and risk of cancer: a systematic review and meta-analysis of observational studies. *Int J Cancer* 2014; 135: 1884–1897.
61. Shah AS, Langrish JP, Nair H, *et al.* Global association of air pollution and heart failure: a systematic review and meta-analysis. *Lancet* 2013; 382: 1039–1048.
62. Shah AS, Lee KK, McAllister DA, *et al.* Short term exposure to air pollution and stroke: systematic review and meta-analysis. *BMJ* 2015; 350: h1295.
63. Shanmugalingam T, Crawley D, Bosco C, *et al.* Obesity and cancer: the role of vitamin D. *BMC Cancer* 2014; 14: 712.
64. Shi Y, Li T, Wang Y, *et al.* Household physical activity and cancer risk: a systematic review and dose-response meta-analysis of epidemiological studies. *Sci Rep* 2015; 5: 14901.
65. Singh B, Parsaik AK, Mielke MM, *et al.* Association of Mediterranean diet with mild cognitive impairment and Alzheimer's disease: a systematic review and meta-analysis. *J Alzheimers Dis* 2014; 39: 271–282.
66. Stafoggia M, Cesaroni G, Peters A, *et al.* Long-term exposure to ambient air pollution and incidence of cerebrovascular events: results from 11 European cohorts within the ESCAPE project. *Environ Health Perspect* 2014; 122: 919–925.
67. Sun K, Liu D, Wang C, *et al.* Passive smoke exposure and risk of diabetes: a meta-analysis of prospective studies. *Endocrine* 2014; 47: 421–427.
68. Tajima R, Kodama S, Hirata M, *et al.* High cholesterol intake is associated with elevated risk of type 2 diabetes mellitus - a meta-analysis. *Clin Nutr* 2014; 33: 946–950.
69. Touvier M, Fassier P, His M, *et al.* Cholesterol and breast cancer risk: a systematic review and meta-analysis of prospective studies. *Br J Nutr* 2015; 114: 347–357.
70. Wang X, Dong Y, Qi X, *et al.* Cholesterol levels and risk of hemorrhagic stroke: a systematic review and meta-analysis. *Stroke* 2013; 44: 1833–1839.
71. Wang Y, Eliot MN and Wellenius GA. Short-term changes in ambient particulate matter and risk of stroke: a systematic review and meta-analysis. *J Am Heart Assoc* 2014; 3: e000983.
72. Xia X, Chen W, Li J, *et al.* Body mass index and risk of breast cancer: a nonlinear dose-response meta-analysis of prospective studies. *Sci Rep* 2014; 4: 7480.
73. Yang WS, Wang X, Deng Q, *et al.* An evidence-based appraisal of global association between air pollution and risk of stroke. *Int J Cardiol* 2014; 175: 307–313.
74. Zhu B, Wu X, Wang X, *et al.* The association between passive smoking and type 2 diabetes: a meta-analysis. *Asia-Pac J Public He* 2014; 26: 226–237.

75. Rezende LFM, Sa TH and Markozannes G, *et al.* Physical activity and cancer: an umbrella review of the literature including 22 major anatomical sites and 770 000 cancer cases. *Br J Sports Med* 2018; 52: 826–833.
76. Bagnardi V, Rota M, Botteri E, *et al.* Alcohol consumption and site-specific cancer risk: a comprehensive dose-response meta-analysis. *Br J Cancer* 2015; 112: 580–593.
77. Bellou V, Belbasis L, Tzoulaki I, *et al.* Risk factors for type 2 diabetes mellitus: an exposure-wide umbrella review of meta-analyses. *PLoS ONE* 2018; 13: e0194127.
78. Botteri E, Iodice S, Bagnardi V, *et al.* Smoking and colorectal cancer: a meta-analysis. *J Am Med Assoc* 2008; 300: 2765–2778.
79. Cesaroni G, Forastiere F, Stafoggia M, *et al.* Long term exposure to ambient air pollution and incidence of acute coronary events: prospective cohort study and meta-analysis in 11 European cohorts from the ESCAPE Project. *BMJ* 2014; 348: f7412.
80. Gan Y, Gong Y, Tong X, *et al.* Depression and the risk of coronary heart disease: a meta-analysis of prospective cohort studies. *BMC Psychiatry* 2014; 14: 371.
81. Global Burden of Metabolic Risk Factors for Chronic Diseases Collaboration, Lu Y, Hajifathalian K, Ezzati M, *et al.* Metabolic mediators of the effects of body mass index, overweight, and obesity on coronary heart disease and stroke: a pooled analysis of 97 prospective cohorts with 1.8 million participants. *Lancet* 2014; 383: 970–983.
82. Hamra GB, Guha N, Cohen A, *et al.* Outdoor particulate matter exposure and lung cancer: a systematic review and meta-analysis. *Environ Health Perspect* 2014; 122: 906–911.
83. Han H, Guo W, Shi W, *et al.* Hypertension and breast cancer risk: a systematic review and meta-analysis. *Sci Rep* 2017; 7: 44877.
84. Huang Y, Cai X, Li Y, *et al.* Prehypertension and the risk of stroke: a meta-analysis. *Neurology* 2014; 82: 1153–1161.
85. Kyrgiou M, Kalliala I, Markozannes G, *et al.* Adiposity and cancer at major anatomical sites: umbrella review of the literature. *BMJ* 2017; 356: j477.
86. Lindbohm JV, Kaprio J and Korja M. Cholesterol as a risk factor for subarachnoid hemorrhage: a systematic review. *PLoS ONE* 2016; 11: e0152568.
87. O’Keeffe LM, Taylor G, Huxley RR, *et al.* Smoking as a risk factor for lung cancer in women and men: a systematic review and meta-analysis. *BMJ Open* 2018; 8: e021611.
88. Peters SA, Singhathe Y, Mackay D, *et al.* Total cholesterol as a risk factor for coronary heart disease and stroke in women compared with men: a systematic review and meta-analysis. *Atherosclerosis* 2016; 248: 123–131.
89. Peters SA, Huxley RR and Woodward M. Smoking as a risk factor for stroke in women compared with men: a systematic review and meta-analysis of 81 cohorts, including 3,980,359 individuals and 42,401 strokes. *Stroke* 2013; 44: 2821–2828.
90. Psaltopoulou T, Sergentanis TN, Panagiotakos DB, *et al.* Mediterranean diet, stroke, cognitive impairment, and depression: a meta-analysis. *Ann Neurol* 2013; 74: 580–591.
91. Roerecke M and Rehm J. Chronic heavy drinking and ischaemic heart disease: a systematic review and meta-analysis. *Open Heart* 2014; 1: e000135.
92. Scheers H, Jacobs L, Casas L, *et al.* Long-term exposure to particulate matter air pollution is a risk factor for stroke: meta-analytical evidence. *Stroke* 2015; 46: 3058–3066.
93. Schwingshackl L, Schwedhelm C, Galbete C, *et al.* Adherence to Mediterranean diet and risk of cancer: an updated systematic review and meta-analysis. *Nutrients* 2017; 9: E1063.
94. Wahid A, Manek N, Nichols M, *et al.* Quantifying the association between physical activity and cardiovascular disease and diabetes: a systematic review and meta-analysis. *J Am Heart Assoc* 2016; 5: e002495.
95. Wang K, Li F, Zhang X, *et al.* Smoking increases risks of all-cause and breast cancer specific mortality in breast cancer individuals: a dose-response meta-analysis of prospective cohort studies involving 39725 breast cancer cases. *Oncotarget* 2016; 7: 83134–83147.
96. Wei YC, George NI, Chang CW, *et al.* Assessing sex differences in the risk of cardiovascular disease and mortality per increment in systolic blood pressure: a systematic review and meta-analysis of follow-up studies in the United States. *PLoS ONE* 2017; 12: e0170218.
97. Zhang C, Qin YY, Chen Q, *et al.* Alcohol intake and risk of stroke: a dose-response meta-analysis of prospective studies. *Int J Cardiol* 2014; 174: 669–677.

98. Galbete C, Schwingshackl L, Schwedhelm C, *et al.* Evaluating Mediterranean diet and risk of chronic disease in cohort studies: an umbrella review of meta-analyses. *Eur J Epidemiol* 2018; 33: 909–931.
99. Turati F, Galeone C, Rota M, *et al.* Alcohol and liver cancer: a systematic review and meta-analysis of prospective studies. *Ann Oncol* 2014; 25: 1526–1535.
100. Peters R, Peters J, Booth A, *et al.* Trajectory of blood pressure, body mass index, cholesterol and incident dementia. A systematic review. *Br J Psychiatry* 2019; 1–13. DOI: 10.1192/bjp.2019.156.
101. Prince M, Albanese E, Guerchet M, *et al.* World Alzheimer Report 2014. Dementia and risk reduction. Alzheimer's Disease International, <https://www.alz.co.uk/research/world-report-2014> (accessed 25 September 2019).
102. Attems J and Jellinger KA. The overlap between vascular disease and Alzheimer's disease—lessons from pathology. *BMC Med* 2014; 12: 206.
103. Anstey KJ, Cherbuin N, Budge M, *et al.* Body mass index in midlife and late-life as a risk factor for dementia: a meta-analysis of prospective studies. 2011; 12: e426–e37.
104. Whitmer RA, Sidney S, Selby J, *et al.* Midlife cardiovascular risk factors and risk of dementia in late life. *Neurology* 2005; 64: 277–281.
105. Barnes DE, Yaffe K, Byers AL, *et al.* Midlife vs late-life depressive symptoms and risk of dementia: differential effects for Alzheimer disease and vascular dementia. *Arch Gen Psychiatry* 2012; 69: 493–498.
106. Norton S, Matthews FE, Barnes DE, *et al.* Potential for primary prevention of Alzheimer's disease: an analysis of population-based data. *Lancet Neurol* 2014; 13: 788–794.
107. World Health Organisation. *Global status report on noncommunicable diseases 2014*. Geneva: World Health Organisation, 2014.
108. Vaupel JW, Manton KG and Stallard E. The impact of heterogeneity in individual frailty on the dynamics of mortality. *Demography* 1979; 16: 439–454.
109. Rockwood K and Howlett SE. Age-related deficit accumulation and the diseases of ageing. *Mech Ageing Dev* 2019; 180: 107–116.
110. Justice JN, Nambiar AM, Tchkonina T, *et al.* Senolytics in idiopathic pulmonary fibrosis: results from a first-in-human, open-label, pilot study. *EBioMedicine* 2019; 40: 554–563.