

1  
2  
3 **COVID-19 Infection, Admission and Death Amongst People with Rare Autoimmune Rheumatic**  
4 **Disease in England. Results from the RECORDER Project.**  
5

6 **Authors:** Megan Rutter<sup>1,2</sup>, Peter C. Lanyon<sup>1,2,3,4</sup>, Matthew J. Grainge<sup>1</sup>, Richard Hubbard<sup>1,4</sup>, Emily  
7 Peach<sup>1</sup>, Mary Bythell<sup>3</sup>, Peter Stilwell<sup>3</sup>, Jeanette Aston<sup>3</sup>, Sarah Stevens<sup>3</sup>, Fiona A. Pearce<sup>1,2,3,4</sup>  
8

9 **Affiliations:**

10 <sup>1</sup> Department of Population and Lifespan Sciences, School of Medicine, University of Nottingham,  
11 Nottingham, UK

12 <sup>2</sup> Department of Rheumatology, Nottingham University Hospitals NHS Trust, Nottingham, UK

13 <sup>3</sup> National Congenital Anomaly and Rare Disease Registration Service, National Disease Registration  
14 Service, Public Health England, UK

15 <sup>4</sup> National Institute for Health Research (NIHR) Nottingham Biomedical Research Centre,  
16 Nottingham, UK  
17

18  
19 **Corresponding author:** Megan Rutter, Clinical Sciences Building, City Hospital Campus, University of  
20 Nottingham, NG5 1PB. [megan.rutter@nottingham.ac.uk](mailto:megan.rutter@nottingham.ac.uk)  
21 ORCID iD 0002-1522-9620  
22  
23  
24  
25  
26  
27  
28  
29  
30  
31  
32  
33  
34  
35  
36  
37  
38  
39  
40  
41  
42  
43  
44  
45  
46  
47  
48  
49  
50  
51  
52  
53  
54  
55  
56  
57  
58  
59  
60

**Abstract****Objectives:**

To calculate the rates of COVID-19 infection and COVID-19-related death among people with rare autoimmune rheumatic diseases (RAIRD) during the first wave of the COVID-19 pandemic in England compared to the general population.

**Methods:**

We used Hospital Episode Statistics to identify all people alive 01 March 2020 with ICD-10 codes for RAIRD from the whole population of England. We used linked national health records (demographic, death certificate, admissions and PCR testing data) to calculate rates of COVID-19 infection and death up to 31 July 2020. Our primary definition of COVID-19-related death was mention of COVID-19 on the death certificate. General population data from Public Health England and the Office for National Statistics were used for comparison. We also describe COVID-19-related hospital admissions and all-cause deaths.

**Results:**

We identified a cohort of 168,680 people with RAIRD, of whom 1874 (1.11%) had a positive COVID-19 PCR test. The age-standardised infection rate was 1.54 (95% CI 1.50-1.59) times higher than in the general population. 713 (0.42%) people with RAIRD died with COVID-19 on their death certificate and the age-sex-standardised mortality rate for COVID-19-related death was 2.41 (2.30 – 2.53) times higher than in the general population. There was no evidence of an increase in deaths from other causes in the RAIRD population.

**Conclusions:**

During the first wave of COVID-19 in England, people with RAIRD had a 54% increased risk of COVID-19 infection and more than twice the risk of COVID-19-related death compared to the general population. These increases were seen despite shielding policies.

**Keywords:** COVID-19, coronavirus, mortality, rare autoimmune rheumatic diseases, epidemiology, shielding, infection

**Rheumatology Key Messages:**

1. People with with rare autoimmune rheumatic diseases were at increased risk of COVID-19 infection during the first wave.
2. Compared to the general population, they had over twice the risk of COVID-19-related death.
3. These increased risks were seen despite shielding policies in place in England.

## Introduction

Our previous work has shown that people with rare autoimmune rheumatic diseases (RAIRD) were at increased risk of all-cause mortality during the first wave of the COVID-19 pandemic (March-April 2020), when compared to the general population in England(1). However, this study did not examine whether the increased mortality was due to COVID-19 infection itself, or due to indirect effects of the pandemic.

This study uses linked national health records for the whole population of England to calculate the rates of laboratory confirmed COVID-19 infection and COVID-19-related death among people with RAIRD from 01 March to 31 July 2020, the first wave of the COVID-19 pandemic, and compares these rates to that in the general population. We describe COVID-19-related hospital and ICU admission, underlying causes of death by category and COVID-19-related mortality stratified by RAIRD diagnosis.

## Methods

### *Background*

The Registration of Complex Rare Diseases Exemplars in Rheumatology (RECORDER) project is a collaboration between the University of Nottingham, Nottingham University Hospitals NHS Trust and the National Congenital Anomaly and Rare Disease Registration Service (NCARDRS). NCARDRS, based within Public Health England (PHE), registers people with rare conditions in order to support high quality clinical practice and research, provide epidemiology data and empower patients(2). It has unique access to linked national datasets of electronic health records at patient-identifiable level for the whole population of England.

This study uses Hospital Episode Statistics (HES, which contains every episode of admitted patient care in NHS hospitals in England), COVID-19 polymerase chain reaction (PCR) test results and Office for National Statistics (ONS) death certificate data.

### *Data validation*

Our previous work validating HES ICD-10 codes for RAIRD has shown high accuracy, with a positive predictive value was 84.7%(1). Prevalence estimates based on our findings for ANCA-associated vasculitis, systemic lupus erythematosus and scleroderma, are similar to reported population estimates(3-5).

### *Study cohort*

People with a diagnostic code for RAIRD in HES from 2003 onwards, resident in England, and alive 01 March 2020 were included in the study, using the same cohort as our preliminary all-cause mortality study(1). A data flow diagram is shown in Supplementary Figure S1, available at *Rheumatology* online. Vital status data from the NHS Personal Demographics Service were used to confirm whether people were alive, or to confirm date of death(6).

### *RAIRD diagnoses*

Participants were grouped by RAIRD diagnosis, based on their most recent diagnostic code. Where the most recent code was non-specific, for example "Renal tubulo-interstitial disorder in systemic connective tissue disorder", earlier, more specific diagnostic codes were used where available, following the algorithm in Supplementary Data S1, available at *Rheumatology* online.

### *Death certificate data*

1  
2  
3  
4  
5  
6  
7  
8  
9  
10  
11  
12  
13  
14  
15  
16  
17  
18  
19  
20  
21  
22  
23  
24  
25  
26  
27  
28  
29  
30  
31  
32  
33  
34  
35  
36  
37  
38  
39  
40  
41  
42  
43  
44  
45  
46  
47  
48  
49  
50  
51  
52  
53  
54  
55  
56  
57  
58  
59  
60

Death certificate and underlying cause of death data (free text and ICD-10 coded) provided by the ONS were utilised. Using internationally agreed rules, ONS assigns underlying cause of death, usually based on the lowest completed line of Part 1 of a death certificate(7). Our data were examined for ICD-10 codes specific to COVID-19 (U07.1, U07.2). The free text was manually checked for keywords (“cov”, “virus” or “19”) which confirmed that no deaths related to COVID-19 (including misspellings) had been omitted. Whilst COVID-19-specific ICD-10 codes were not introduced until 25 March 2020(8), all deaths with a free text mention of COVID-19 occurring before that date had been captured retrospectively by the ONS coding system. We classified underlying all-cause death by category.

#### *COVID-19 status*

A population-level dataset of COVID-19 PCR test results, held in the Second Generation Surveillance System in PHE, was used. Positive tests amongst the RAIRD cohort were extracted, along with the date the laboratory reported the result. Demographics are described by pillar 1 (in-hospital) or pillar 2 (community) testing.

#### *Hospital and intensive care unit admissions*

HES admitted patient care (APC) data on hospital and intensive care unit (ICU) admissions with an ICD-10 diagnostic code for COVID-19 were extracted. Duration and number of admissions, and basic and advanced respiratory support days on ICU are described.

#### *Mortality rate calculation*

We report two measures of COVID-19-related deaths. Our primary definition is death with any mention of COVID-19 on the death certificate as used by the ONS(9). This was chosen due to the limited availability of COVID-19 PCR testing in the community during the first wave. Our secondary definition is death within 28 days of a positive COVID-19 PCR test, as used by PHE(10).

The crude all-cause mortality rate from 01 March to 31 July 2020 was calculated, with the cohort of patients identified as having RAIRD used as the denominator population, along with the crude mortality rates for the two measures of COVID-19-related death.

Age-sex-standardised mortality rates per 100,000 in the population were calculated, standardised to the 2019 mid-year estimate for the England population using 5-year age bands. Age-standardised mortality rates (ASMRs) standardised to the 2013 European Standard Population (ESP) were also calculated. As the ESP is not disaggregated by sex and assumes equal numbers of males and females, and identical age distributions within sexes, this population was not used to calculate age-sex standardised rates.

The ONS provided data for all-cause deaths, and deaths with any mention of COVID-19 on the death certificate, over the same time period in England, split by sex and age band (11, 12). PHE provided comparable data for deaths within 28 days of a positive COVID-19 test (available to the public on request). These data were used to calculate the crude, age-standardised and age-specific mortality rates as a comparator. Publicly available data from the government Coronavirus dashboard(13) were used to compare infection rates in the general population. The 2019 mid-year estimate for the population of England was used as the denominator.

#### *COVID-19 infection rate calculation*

Laboratory confirmed COVID-19 infection rate from 01 March to 31 July 2020 was calculated, with the cohort of patients identified as having RAIRD used as the denominator population. Infection rate was age-standardised to the mid-year 2019 England population.

### *Stratification by disease*

Poisson regression methods were used to analyse rates of COVID-19-related death, adjusted for age, sex and RAIRD diagnosis. Incidence rate ratios for each diagnosis, with 95% confidence intervals, were displayed as a forest plot.

### *Ethics*

This study was approved by the Camden and Kings Cross Research Ethics Committee, study reference 20/HRA/2076, on 18 June 2020.

The legal basis to access the data is predominantly covered by NCARDRS' Section 251 approval (Reference CAG 10-02(d)/2015). Where the work extends beyond Section 251 approval, it has been approved under Regulation 3(4) of the Health Service Control of Patient Information Regulations 2002 (COPI), allowing the processing of confidential patient information for the purposes of protecting public health and managing the COVID-19 outbreak.

For quality assurance the data extraction and analysis were re-conducted by an independent analyst from the National Disease Registration Service.

### *Patient and public involvement*

This work has been developed with input from people with RAIRD. Following our findings of increased mortality in this population(1), we consulted with patients and patient charities to confirm priorities for future research and inform the communication and dissemination of our results. This will continue as an iterative process as results become available. A plain english summary of this study is available in the Supplementary Material, available at *Rheumatology* online.

### *Data analysis*

Cleaning, linkage and analysis of the data was performed in R version 3.6.3 (packages *tidyverse*(14), *janitor*(15), *survival*(16), *mfx*(17), *survminer*(18), *meta*(19)).

## **Results**

### *Demographic data*

168,691 people were included in the RAIRD cohort in our all-cause mortality study(1). Updates to personal demographic data revealed that 11 people had died prior to 01 March 2020, leaving 168,680 people included in this study. Descriptive demographic data, including RAIRD diagnoses, are shown in Table 1. The median age of the population was 61.7 years (IQR 41.5 – 75.4) and 118,374 (70.2%) were female.

### *COVID-19 infection*

Between 01 March and 31 July 2020, 1874 (1.11%) of the RAIRD population had a positive COVID-19 PCR test, compared to 261,348 (0.46%) of the general population. Age-standardised to the England population, the infection rate per 100,000 person-years was 1,720.3 (1670.0-1770.6), compared to 1114.3 (1111.5-1117.0) per 100,000 person-years in the general population (rate ratio 1.54 (1.50-1.59), Table 2).

Characteristics of those with a positive COVID-19 PCR test are shown in Table 2. People with RAIRD with a positive PCR test were more likely to have had a pillar 1 test (86.87% of positive tests) than people with a positive PCR test in the general population (62.31% of positive tests).

### *All-cause mortality*

1  
2  
3 Between 01 March and 31 July, 3401 (2.02%) people in the RAIRD cohort died of any cause,  
4 compared to 257,547 out of 56,286,961 (0.46%) among the general population.  
5

#### 6 *COVID-19 related mortality*

7 Of the 3401 people who died, death certificate data were available for 3332 (97.97%). 713 (0.42%  
8 RAIRD cohort) had COVID-19 mentioned on their death certificate, in any position. This compares to  
9 49,166 (0.09%) of all those who died in the general population.  
10

11  
12 Of those with a positive COVID-19 PCR test, 574/1874 (30.6%) died within 28 days of a positive test,  
13 compared to 36,658/261,348 (14.03%) of the general population. However, the RAIRD cohort were  
14 older than the general population of England.  
15

16 The combined total of people with RAIRD dying with either COVID-19 mentioned on their death  
17 certificate, or within 28 days of a positive COVID-19 test, is reported in Supplementary Data S1,  
18 available at *Rheumatology* online.  
19

#### 20 *Age- and age-sex-standardised mortality rates*

21 The age-sex-standardised mortality rate for all-cause death in RAIRD, standardised to the 2019 mid-  
22 year population of England, was 2325.2 (2274.8 – 2375.7), compared to 1098.1 (95% CI 1095.4-  
23 1100.9) in the general population (rate ratio 2.12 (2.07 – 2.16)). For deaths mentioning COVID-19 on  
24 the death certificate, the age-sex-standardised mortality rate was 505.5 (481.5–529.4), compared to  
25 209.6 (208.4–210.8) in the general population (rate ratio 2.41 (2.30 – 2.53)). For deaths within 28  
26 days of a positive COVID-19 PCR test, the age-sex-standardised mortality rate in RAIRD was 422.0  
27 (399.7–444.3), compared to 156.3 (155.3–157.3) in the general population (rate ratio 2.70 (2.56 –  
28 2.84)). These data are summarised in Table 3. The ASMR for all-cause death in RAIRD, adjusted to  
29 the 2013 European Standard Population is available in Supplementary Table S1, available at  
30 *Rheumatology* online.  
31  
32  
33

#### 34 *COVID-19 related deaths over time*

35 All-cause deaths in 2019 and 2020, deaths with any mention of COVID-19 on the death certificate  
36 and deaths within 28-days of a positive COVID-19 PCR test were plotted over time and are shown in  
37 Supplementary Figure S2, available at *Rheumatology* online.  
38  
39

#### 40 *Admissions*

41 Demographic data for those who were admitted to hospital and/or to ICU with a diagnostic code for  
42 COVID-19 are shown in Table 4. The median age of those with a hospital admission was 75.07 years  
43 (IQR 62.13-83.64), and for an ICU admission 60.65 years (IQR 48.71-69.79).  
44

45 For hospital admissions, the median length of stay was 8 days (mean 13.8, range 0-269) and the  
46 median number of admissions was 2 (mean 2.3, range 1-20).  
47

48 For ICU admissions, the median length of stay was 6 days (mean 12.1, range 0-101) and the median  
49 number of admissions was 1 (mean 1.2, range 1-3). The median number of basic respiratory support  
50 days whilst on ICU was 2 (mean 3.6, range 0-30) and the median number of advanced respiratory  
51 support days was 1 (mean 7.9, range 0-93) (Table 4).  
52  
53

#### 54 *All-cause death by category*

55 Where death certificate data were available, underlying cause of death by category was extracted  
56 and are shown in Supplementary Table S2, available at *Rheumatology* online. Deaths due to  
57 cardiovascular disease were recorded in 703 (21.1%), COVID-19 652 (19.6%), malignancy 581  
58  
59  
60

(17.4%), respiratory 404 (12.1%), dementia 280 (8.4%), underlying RAIRD 113 (3.4%) and non-COVID-19 infection 19 (0.6%), with the remaining 580 (17.4%) ascribed to other causes.

For comparison, data were extracted on all-cause death in people with a diagnostic code for RAIRD occurring during March-July 2016-2020 and categorised by underlying cause (Figure 1). There was no evidence of an increase in death from non-COVID-19-related causes during the pandemic.

#### *Age at death*

There was no significant change in median age at death between 2016 and 2020 (median age ranged from 79.92-81.50), and this was similar to age at death related to COVID-19 (median 81.31, IQR 72.98-87.34; Supplementary Table S3, available at *Rheumatology* online).

Age at death in people with RAIRD was compared between 2020 and 2019, categorised by underlying cause of death (Supplementary Figure S3, available at *Rheumatology* online). There was no evidence of earlier age of death occurring in 2020 in certain cause of death categories e.g. in deaths from cardiovascular disease.

#### *Stratification by disease*

Incidence rate ratios for COVID-19-related death stratified by RAIRD diagnosis are displayed in Figure 2. The comparable ratios and overlapping confidence intervals suggest a similar risk across the RAIRD cohort, regardless of diagnosis. People with giant cell arteritis (GCA) were at slightly reduced risk (RR 0.66, 95% CI 0.60-0.74), which may reflect that GCA is often a self-limiting disease not requiring lifelong immunosuppression. The wide confidence intervals reflect the relatively small number of events in the first wave.

## **Discussion**

#### *Main findings*

In the first wave of the COVID-19 pandemic, COVID-19-related death rates among people with RAIRD were more than twice that of the general population. This was contributed to by both higher COVID-19 infection rates, and higher mortality after COVID-19 infection.

The age-sex-standardised COVID-19 infection rate was 1.54 (1.50-1.59) times higher among people with RAIRD compared to the general population, despite shielding policies (protection of the clinically extremely vulnerable(20)) in place in England.

#### *Strengths*

A major strength is that the denominator population is known, allowing us to describe for the first time both rates of COVID-19 infection and of COVID-19 related death. Previous mortality COVID-19 studies in RAIRD have either included much a smaller group of people, or relied on case series and physician reported cases(21) and allowed only internal comparisons within cohorts of people with rheumatic diseases, and not comparison with the general population.

This work uses novel linkages of HES, COVID-19 PCR testing data and death certificate data for people with rare diseases, through collaboration with NCARDS.

Whilst our RAIRD cohort contains a heterogenous group of diseases, our sub-analysis by disease show they have comparable risks of death due to COVID-19. Pooled analysis of these diseases increases statistical power to detect outcomes and is clinically justified by their common underlying disease mechanisms and treatments.

### *Limitations*

The measures of COVID-19 mortality described were selected to allow comparison with available statistics for the general population. Our primary definition, any mention of COVID-19 on the death certificate (used by the ONS), infers that COVID-19 infection contributed to death, even if it was not the main cause and even in the absence of a positive PCR test. This has the theoretical potential to over-estimate deaths due to COVID-19 infection but has been found to be the best measure to explain the excess deaths seen in the national data. In our RAIRD cohort, of the 713 people with a mention of COVID-19 on the death certificate, 661 (93%) had COVID-19 in part 1, meaning that it directly lead to death(22). Conversely, we may have underestimated COVID-19-related deaths as death certificate data were unavailable for 2% of our cohort. This proportion is not unexpected and registration delays are common(23), although they may disproportionately reflect certain groups such as deaths in hospital, or due to occupational exposure to disease (including COVID-19(24)).

Our secondary definition was death within 28 days of a positive COVID-19 PCR test, as used by PHE. This measure overlooks deaths where the person never has a positive PCR test, or where the death occurred more than 28 days after diagnosis: important given the prolonged clinical course of COVID-19. In our RAIRD cohort, the median time between a positive test and death was 6 days, and only 22 (4%) of those who had COVID-19 on their death certificate, and had a positive PCR test, had that test more than 28 days prior to death.

We identified our cohort from diagnoses in HES admitted patient care (APC) data and our methodology may not have identified patients with RAIRD who have never had an in-patient or daycase admission for any reason, and who have been treated entirely on an outpatient basis. Due to the nature of RAIRD, we believe this to be the minority of cases, which is supported by disease prevalence in our cohort being similar to previous studies(3, 5, 25). However, the potential impact is to skew our cohort towards those with more severe disease.

This work describes outcomes in the first wave only. Further work is needed to describe the outcomes in the second wave, and assess the influence of immunosuppression, shielding policies and the vaccination programme.

This study does not include data on immunosuppressive medications. The vulnerability to COVID-19 of people living with RAIRD is likely explained in part by the frequent need for immunosuppression in this group. Corticosteroid usage has long been thought to increase the risk of infection(26-28) although in COVID-19, this has been complicated by the emergence of dexamethasone as an effective treatment(29). Concerns remain that corticosteroid treatment preceding infection may predispose to more severe disease(30-32). Whilst IL-6 receptor antagonists have been shown to reduce mortality in severe COVID-19 requiring intensive care(33), other immunosuppressants, such as rituximab, may impair the antiviral immune response and antibody production, with potentially more severe clinical outcomes(31, 34). This may also impact vaccine effectiveness and recently published data has demonstrated attenuated antibody responses in people with AAV on rituximab(35).

### *Comparison to the published literature*

The small numbers of people affected by each RAIRD makes it difficult for studies to have enough statistical power to assess outcomes. Most research has therefore included more common rheumatic diseases such as rheumatoid arthritis (RA).

The COVID-19 Global Rheumatology Alliance describes COVID-19-related mortality in RAIRD and reports an association between immunosuppressive medications and mortality(31). However, this relied on physician-reported cases and could not report rates of COVID-19 infection or deaths. A



1  
2  
3 study looking at the French RMD COVID-19 cohort, a mixture of physician-reported RA and RAIRD  
4 patients, found an increased risk of severe COVID-19 in those treated with rituximab(36). There was  
5 no increase in mortality in the rituximab group once other risk factors were adjusted for. Data from  
6 the same cohort also demonstrated an association between severe infection and treatment with  
7 corticosteroids or mycophenolate mofetil(37).  
8  
9

10 A multi-centre prospective cohort study from Brazil, with a mixed study population of inflammatory  
11 arthritis and RAIRD, showed an increased risk of ICU admission and mortality associated with  
12 corticosteroids and cyclophosphamide(38).  
13

14 OpenSAFELY and QCOVID, both of which looked at risk factors for severe COVID-19 outcomes in  
15 England, studied smaller populations. At the time of the last published analysis,  
16 OpenSAFELY included 24 million patients(39) and QCOVID 8.26 million(21). Our research uses the  
17 whole England population of 56 million, which has afforded us the statistical power to calculate  
18 more precise results. The use of whole population data, with a known denominator population, also  
19 allows calculation of rates and comparison to the general population.  
20  
21

22 In addition, of the RAIRD, only systemic lupus erythematosus was included in the QCOVID and  
23 OpenSAFELY studies, in both cases combined with RA. Both found a modest increase in the risk of  
24 death (HR 1.32 (1.06-1.65) and 1.20 (1.12-1.28) respectively(39, 40)).  
25  
26

27 Whole population data from Denmark(41) on COVID-19 hospital admissions, including 10,749 people  
28 with RAIRD, supports our findings of increased risk in connective tissue disease and vasculitis (age-  
29 sex adjusted HR 1.63 (0.78–3.43) and 2.03 (1.02–4.08) respectively). The wide confidence intervals  
30 reflect the small number of events, as well as their smaller population of 4.54 million. They do not  
31 report on COVID-19 infection rates, nor on mortality in RAIRD specifically.  
32  
33

34 Whole population data from South Korea(42), including 1896 people with RAIRD, also found an  
35 increased risk of COVID-19 infection and hospitalisation (HR 1.33 (1.02–1.74) and 1.71 (1.06–2.71)  
36 respectively). There was also a suggestion of increased COVID-19 mortality but the small number of  
37 events (7 deaths) gave wide confidence intervals, which were not statistically significant (HR 1.87  
38 (0.71–4.85)).  
39

#### 40 *Infection rate*

41 There was an increased age-standardised infection rate in the RAIRD cohort, despite the intent of  
42 shielding policy to reduce infection exposure. There are several potential reasons for this. They may  
43 be more susceptible to symptomatic COVID-19 infection due to their underlying disease and  
44 immunosuppression. During the first wave, where testing was predominantly in hospital, their  
45 increased contact with healthcare services may have led to increased testing and ascertainment  
46 bias. People with RAIRD may have a worse state of health than the general population, leading to  
47 increased hospital admissions, necessitating COVID-19 admission screening tests and the risk of  
48 nosocomial infection. Requirements for hospital attendances may also have increased the risk of  
49 acquiring infection.  
50  
51

#### 52 *Clinical and policy implications and future research*

53 Our findings provide clear evidence that during the first wave of the pandemic people with RAIRD  
54 were both at higher risk of COVID-19 infection and of COVID-19-related death than people of the  
55 same age and sex in the general population. These findings have important implications for people  
56 living with RAIRD, their clinicians and for public health policy.  
57  
58  
59  
60

1  
2  
3 They confirm at whole population-level that the assumptions at the start of the pandemic, that  
4 many people with RAIRD would be clinically extremely vulnerable to the effect of COVID-19(43),  
5 were correct. Many people with RAIRD require lifelong immunosuppression, conferring ongoing risk.  
6 Protecting the health of people with RAIRD needs specific public health prioritisation, to reduce both  
7 their risk of acquiring COVID-19 infection and mortality.  
8  
9

10 Within the UK, certain people were classified as “clinically extremely vulnerable” to COVID-19  
11 infection and asked to “shield”(20). Whilst a RAIRD diagnosis alone did not lead to inclusion on the  
12 Shielded Patient List (SPL), risk stratification guidance advised that many patients on  
13 immunosuppressive therapies, including moderate- to high-dose corticosteroids, and/or with  
14 relevant co-morbidities, should shield(44). Given the nature of RAIRD, this included many people  
15 living with these conditions(45, 46). Our findings suggest that despite this, COVID-19 infection and  
16 mortality rates were greater for people with RAIRD than for the general population. This is  
17 observational data, and the shielding status of this cohort is not yet known, so it is not possible to  
18 determine what the outcomes would have been without shielding policies in place. In addition,  
19 shielding policies were instituted on 23 March 2020 and some of our findings may reflect earlier  
20 transmission. Further research in this cohort during later waves of the pandemic, including  
21 assessment of the impact of shielding, is ongoing.  
22  
23

24 We did not find an excess of non-COVID-19-related deaths during this period. This may reflect  
25 efforts to prioritise access to urgent care. However, any detrimental effect of the pandemic may  
26 have a delayed impact on mortality.  
27  
28

29 Our results highlight the urgent need for analysis of the real-world effectiveness of vaccination  
30 among people with RAIRD, given the evidence that they may respond less well to vaccination(35,  
31 47). This will have crucial implications for their ongoing health protection needs, including deciding  
32 the optimal vaccination schedule to maximise protection.  
33  
34  
35  
36  
37  
38  
39  
40  
41  
42  
43  
44  
45  
46  
47  
48  
49  
50  
51  
52  
53  
54  
55  
56  
57  
58  
59  
60

**Acknowledgements:** We would like to thank Chetan Mukhtyar, Reem Al-Jayyousi, Bridget Griffiths, Richard Watts, Mithun Chakravorty, Cattleya Godsave, Julie Battista, Robin Glover, Matthew Bell and Kay Randall for their help confirming diagnoses in hospital medical notes.

We would also like to thank Charlotte Eversfield for the thorough quality assurance of the data included in this study.

This work uses data that has been provided by patients, the NHS and other health care organisations as part of patient care and support. The data is collated, maintained and quality assured by the National Congenital Anomaly and Rare Disease Registration Service, which is part of Public Health England (PHE).

FP is funded by an NIHR Advanced Fellowship.

This project is a HDR-UK Better Care theme project.

FP and PCL are recipients of a grant from Vifor pharma. Vifor pharma had no influence on the design, conduct or interpretation of this study.

**Competing Interest Statement:**

FP and PCL are recipients of a grant from Vifor pharma. Vifor pharma had no influence on the design, conduct or interpretation of this study.

At the time of her contribution to this study, EP was employed by the University of Nottingham. She has gone on to work for Astra Zeneca, who had no influence on the design, conduct or interpretation of this study.

**Funding Statement:**

MR is funded by Vasculitis UK (patient charity) and the British Society for Rheumatology, and would like to thank them for their help and support.

**Data availability statement:**

Due to legal and ethical considerations, supporting data cannot be made openly available. However, NCARDS data are available to all who have a legal basis to access them. Further details about the data and conditions for access are available by application to the [National Disease Registration Service](https://www.gov.uk/guidance/the-national-congenital-anomaly-and-rare-disease-registration-service-ncards) (<https://www.gov.uk/guidance/the-national-congenital-anomaly-and-rare-disease-registration-service-ncards>). Information on how to access this data can also be obtained from the University of Nottingham data repository: DOI: 10.17639/nott.7131

Table 1: Characteristics of the cohort of people with RAIRD alive 01 March 2020 (n=168,680)

Characteristic	Value
Sex*	
Female	118,374 (70.2%)
Male	50,305 (29.8%)
Median age (IQR)	
Total cohort	61.7 (41.5 - 75.4; 33.9)

1		
2		
3	Female	61.8 (43.0 -75.7; 32.6)
4		
5	Male	61.3 (36.6 -74.9; 38.3)
6		
7	<hr/>	
8	Most recent diagnosis (n, %)	
9	Systemic lupus erythematosus	41,261 (24.5%)
10	Giant cell arteritis	38,014 (22.5%)
11	Juvenile inflammatory arthritis	21,202 (12.6%)
12	Arteritis, unspecified	17,632 (10.5%)
13	Polymyositis	17,447 (10.3%)
14	Scleroderma	11,578 (6.9%)
15	Granulomatosis with polyangiitis	6,164 (3.7%)
16	Behcet's disease	4,880 (2.9%)
17	Dermatomyositis	2,594 (1.5%)
18	Eosinophilic granulomatosis with polyangiitis	2,351 (1.4%)
19	Polyarteritis nodosa	1,597 (0.9%)
20	Microscopic polyangiitis	1,339 (0.8%)
21	Connective tissue disorder with specific organ involvement	1,218 (0.7%)
22	Takayasu arteritis	905 (0.5%)
23	Juvenile myositis	498 (0.3%)
24		

ICD-10 codes used: Systemic lupus erythematosus = M321, M328, M329; Giant cell arteritis = M315, M316; Juvenile inflammatory arthritis = M080, M082, M083, M084, M089; Arteritis, unspecified = I776; Polymyositis = G724, M332, M608, M609; Scleroderma = M340, M341, M348, M349; Granulomatosis with polyangiitis = M313; Behcet's disease = M352; Dermatomyositis = M331, M339; Eosinophilic granulomatosis with polyangiitis = M301; Polyarteritis nodosa = M300, M308; Microscopic polyangiitis = M317; Connective tissue disorder with specific organ involvement = J991, N085, N164; Takayasu arteritis = M314; Juvenile myositis = M330. \*One person did not have sex recorded

Table 2: PCR-proven COVID-19 infections in the RAIRD population compared to the whole population of England

	RAIRD (n = 168,680)	England (n = 56,286,961)	Rate ratio
Infection rate (n, %)	1,874 (1.11%)	261,348 (0.46%)	
Death certificate mention of COVID (n, %)	713 (0.42%)	56,196 (0.10%)	
Death within 28 days of COVID test (n, %)	574 (0.34%)	36,658 (0.07%)	
Age-standardised COVID-19 infection rate (per 100,000 person-years)	1,720.3 (1670.0-1770.6)	1,114.3 (1111.5-1117.0)	1.54 (1.50-1.59)
Positive COVID-19 PCR tests by pillar (n (% total tests))	RAIRD (n = 168,680)	England (n = 56,286,961)	
Pillar 1	1,628 (86.87%)	164,600 (62.31%)	
Pillar 2	246 (13.13%)	99,583 (37.69%)	
Age of those in RAIRD cohort with a positive PCR test			
	Mean age	Median age	Interquartile range
Pillar 1	71.14	75.10	60.89 – 84.14 (23.25)
Pillar 2	62.42	65.31	42.19 – 84.72 (42.53)
Deaths in RAIRD cohort within 28 days of a positive PCR test, by pillar (n (% deaths))			
Pillar 1	560 (97.6%)		
Pillar 2	14 (2.4%)		
Age of RAIRD cohort who died within 28 days of a positive PCR test			
Pillar 1	77.03	79.21	71.26 - 85.94 (14.68)
Pillar 2	88.13	89.47	84.84 - 92.55 (7.71)

Note: Pillar 1 denotes in-hospital testing and Pillar 2 denotes community testing

Table 3: Mortality rates for the RAIRD cohort compared to the general population of England

	Number of deaths	Number of people	Person-years	Crude mortality rate per 100,000 person years	RAIRD age-sex-standardised mortality rate*	England age-sex-standardised mortality rate*	Risk ratio for mortality rates
<b>All-cause mortality</b>							
All	3,401	168,680	70,283	4,839.0 (4734.0-4944.0)	2325.2 (2274.8 – 2375.7)	1098.1 (1095.4 – 1100.9)	2.12 (2.07 – 2.16)
Female	2179	118,374	49,323	4417.9 (4298.1-4537.6)	2131.7 (2073.9 – 2189.4)	1069.5 (1065.7-1073.3)	1.99 (1.94 – 2.05)
Male	1222	50,305	20,960	5830.0 (5619.0 - 6041.0)	2518.8 (2427.7-2610.0)	1127.5 (1123.5-1131.4)	2.23 (2.15 – 2.31)
<b>Death with any mention of COVID-19 on the death certificate</b>							
All	713	168,680	70,283	1014.4 (966.4-1062.6)	505.5 (481.5–529.4)	209.6 (208.4–210.8)	2.41 (2.30 – 2.53)
Female	427	118,374	49,323	865.7 (812.7 – 918.7)	417.4 (391.9-443.0)	186.2 (184.6-187.8)	2.24 (2.10 – 2.38)
Male	286	50,305	20,960	1164.5 (1262.4 - 1466.6)	595.5 (551.0-640.1)	233.6 (231.8-235.4)	2.55 (2.39 – 2.74)
<b>Death within 28 days of a positive COVID-19 test</b>							

All	574	168,680	70,283	816.7 (773.6- 859.8)	422.0 (399.7- 444.3)	156.3 (155.3- 157.3)	2.70 (2.56 – 2.84)
Female	332	118,374	49,323	673.1 (626.3 - 719.9)	327.2 (304.5- 349.9)	131.1 (129.8- 132.5)	2.50 (2.32 – 2.67)
Male	242	50,305	20,960	1154.6 (1060.7 – 1248.5)	519.0 (476.8- 561.2)	182.1 (180.5- 183.6)	2.85 (2.62 – 3.08)

Deaths, crude mortality rates, age-sex-standardised mortality rates and sex-specific age-standardised mortality rates during March to July 2020 for the RAIRD cohort compared to the mid-year 2019 population of England. \*Sex-specific rates are age-standardised only

Table 4: Summary of hospital and intensive care unit (ICU) admissions, including demographics and characteristics of stay

Demographics	n	Mean age	Median age	IQR
Any admission with COVID code	1672*	71.43	75.07	62.13-83.64 (21.51)
Death certificate mention of COVID-19	546†	76.68	79.04	71.15-85.66 (14.51)
Death within 28 days of test	504	76.73	78.95	71.26-85.65 (14.39)
ICU admission with COVID code	137	59.79	60.65	48.71-69.79 (21.08)
Death certificate mention of COVID-19	64	62.72	61.59	51.47-74.97 (23.51)
Death within 28 days of test	59	64.30	65.51	53.83-75.91 (22.07)
COVID positive, not admitted, all	595	65.30	70.72	48.83-84.71 (35.88)
Death from all causes	81	81.91	84.88	76.05-90.15 (14.10)
Death certificate mention of COVID-19	64	81.92	84.86	77.81-89.69 (11.89)
Death within 28 days of test	70§	81.46	84.82	74.70-89.84 (15.14)
Mention of COVID-19 on death certificate, without admission or positive PCR	103	82.53	84.78	77.44-89.40 (11.96)

\*Of whom 1279/1672 had a positive COVID-19 PCR test

† Of whom 502/546 had a positive COVID-19 PCR test

§Of whom 61/70 had mention of COVID-19 on their death certificate

#### All hospital admissions‡ (n=1672)

	Median	Mean	Range
Duration of admission (days)	8.0	13.8	0-269
Number of admissions per individual	2.0	2.3	1-20

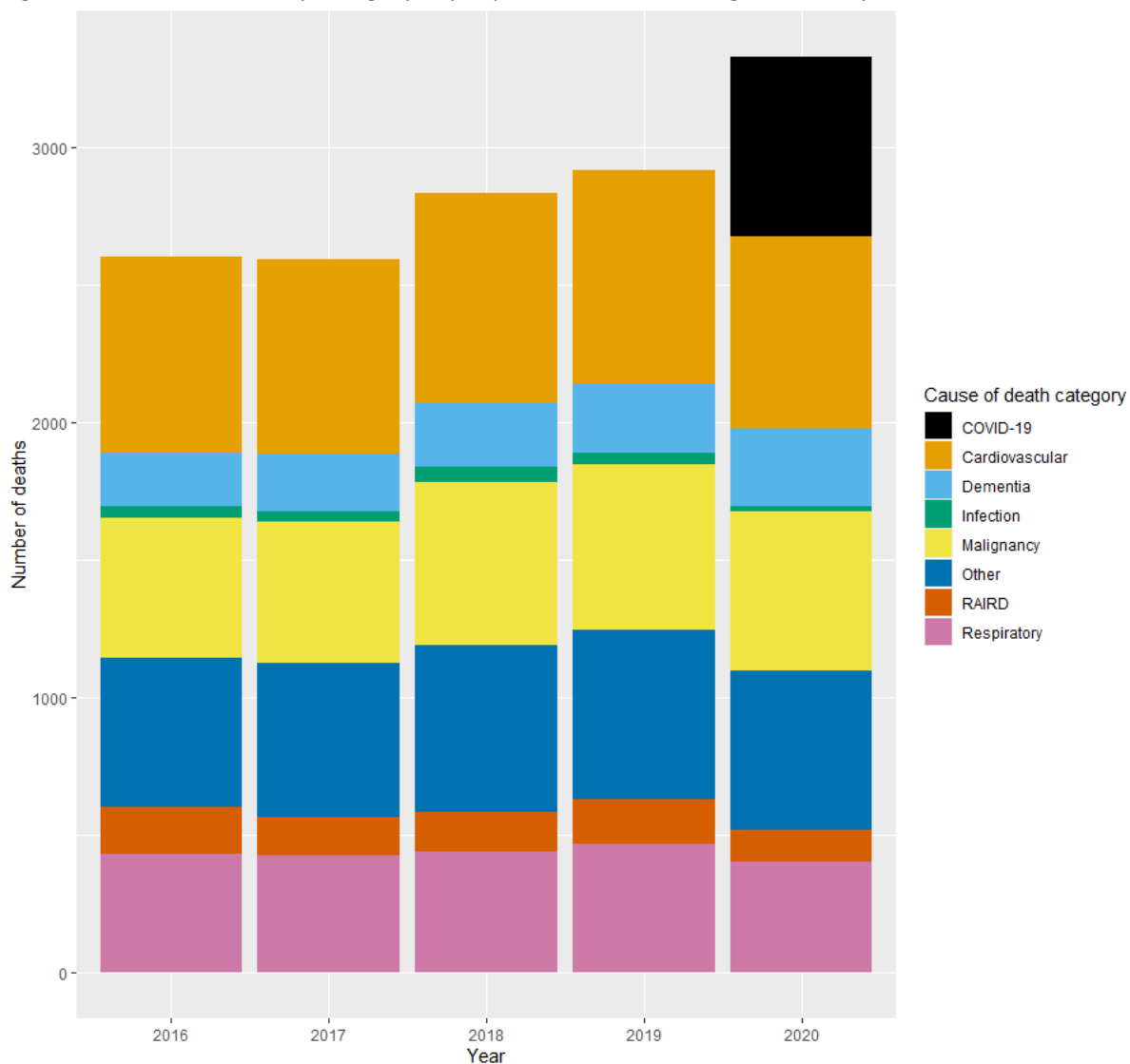
#### ICU admissions‡ (n=137)

	Median	Mean	Range
Basic respiratory support days	2.0	3.6	0-30
Advanced respiratory support days	1.0	7.9	0-93
Duration of admission (days)	6.0	12.1	0-101
Number of ICU admissions per individual	1.0	1.2	1-3

‡Where an individual had more than one admission, totals are summed

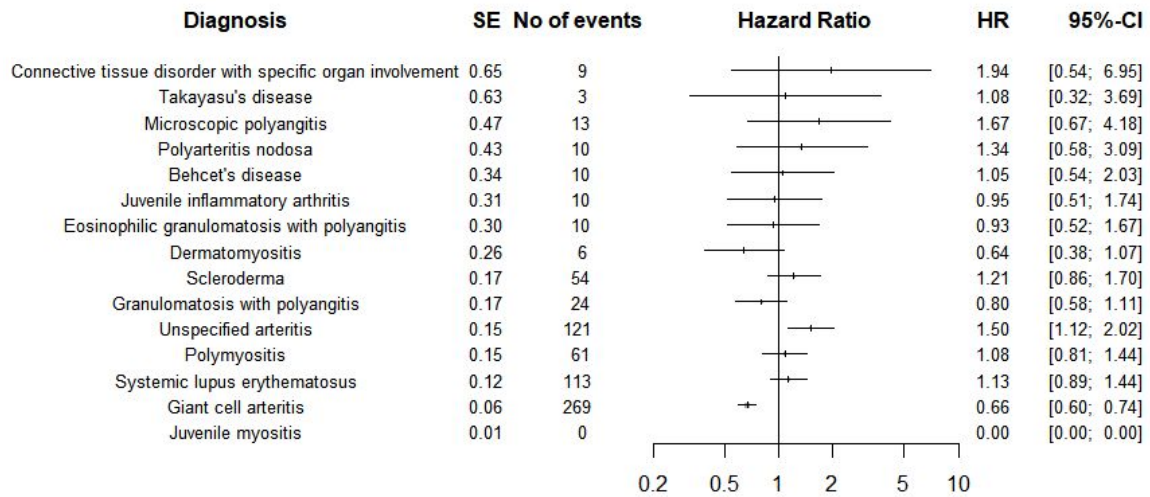


Figure 1: All cause death by category in people with RAIRD during March-July 2016-2020.



Categories align to major ICD-10 code chapters, with the addition of diagnoses pertinent to the cohort (RAIRD, dementia).

Figure 2: Forest plot showing incidence rate ratios with 95% confidence intervals for COVID-19-related death, stratified by RAIRD diagnosis



## References:

1. Peach E, Rutter M, Lanyon P, Grainge MJ, Hubbard R, Aston J, Bythell M, Stevens S, Pearce F. Risk of death among people with rare autoimmune diseases compared with the general population in England during the 2020 COVID-19 pandemic. *Rheumatology*. 2021 Apr;60(4):1902-9. DOI: <https://doi.org/10.1093/rheumatology/keaa855>
2. Public Health England, London. National Congenital Anomaly and Rare Disease Registration Service 2015 [Available from: <https://www.gov.uk/guidance/the-national-congenital-anomaly-and-rare-disease-registration-service-ncards>]. Date last accessed 23 July 2021
3. Royle JG, Lanyon PC, Grainge MJ, Abhishek A, Pearce FA. The incidence, prevalence, and survival of systemic sclerosis in the UK Clinical Practice Research Datalink. *Clinical rheumatology*. 2018;37(8):2103-11. DOI: <https://doi.org/10.1007/s10067-018-4182-3>
4. Rees F, Doherty M, Grainge M, Davenport G, Lanyon P, Zhang W. The incidence and prevalence of systemic lupus erythematosus in the UK, 1999–2012. *Annals of the rheumatic diseases*. 2016;75(1):136-41. DOI: [10.1136/annrheumdis-2014-206334](https://doi.org/10.1136/annrheumdis-2014-206334)
5. Watts RA, Mooney J, Scott DG, editors. *The epidemiology of vasculitis in the UK*. Rheumatology; 2014: OXFORD UNIV PRESS GREAT CLARENDON ST, OXFORD OX2 6DP, ENGLAND.
6. NHS Digital, London. Personal Demographics Service [Available from: <https://digital.nhs.uk/services/demographics/personal-demographics-service-fair-processing>] Date last accessed 23 July 2021
7. Office for National Statistics, London. User Guide to Mortality Statistics, updated 28 September 2020. Available from: <https://www.ons.gov.uk/peoplepopulationandcommunity/birthsdeathsandmarriages/death/s/methodologies/userguidetomortalitystatisticsjuly2017#toc>.] Date last accessed 23 July 2021
8. World Health Organisation. COVID-19 coding in ICD-10. 2020. Available from: [<https://www.who.int/classifications/icd/COVID-19-coding-icd10.pdf>] Date last accessed 23 July 2021
9. Office for National Statistics, London. Coronavirus (COVID-19) related deaths by ethnic group, England and Wales methodology 2020 [Available from: <https://www.ons.gov.uk/peoplepopulationandcommunity/birthsdeathsandmarriages/death/s/methodologies/coronaviruscovid19relateddeathsbyethnicgroupenglandandwalesmethodology>.] Date last accessed 23 July 2021
10. Public Health England, London. Technical summary: Public Health England data series on deaths in people with COVID-19 2020 [Available from: [https://assets.publishing.service.gov.uk/government/uploads/system/uploads/attachment\\_data/file/916035/RA\\_Technical\\_Summary\\_-\\_PHE\\_Data\\_Series\\_COVID\\_19\\_Deaths\\_20200812.pdf](https://assets.publishing.service.gov.uk/government/uploads/system/uploads/attachment_data/file/916035/RA_Technical_Summary_-_PHE_Data_Series_COVID_19_Deaths_20200812.pdf)] Date last accessed 23 July 2021
11. Office for National Statistics, London. Deaths registered weekly in England and Wales, provisional [Available from: <https://www.ons.gov.uk/peoplepopulationandcommunity/birthsdeathsandmarriages/death/s/datasets/weeklyprovisionalfiguresondeathsregisteredinenglandandwales>.] Date last accessed 23 July 2021
12. Office for National Statistics, London. Deaths registered weekly in England, up to week ending 25 December 2020, provisional [Available from:

1  
2  
3 [https://www.ons.gov.uk/peoplepopulationandcommunity/birthsdeathsandmarriages/death](https://www.ons.gov.uk/peoplepopulationandcommunity/birthsdeathsandmarriages/death/s/adhocs/12724deathsregisteredweeklyinenglanduptoweekending25december2020provisio)  
4 [s/adhocs/12724deathsregisteredweeklyinenglanduptoweekending25december2020provisio](https://www.ons.gov.uk/peoplepopulationandcommunity/birthsdeathsandmarriages/death/s/adhocs/12724deathsregisteredweeklyinenglanduptoweekending25december2020provisio)  
5 [nal](https://www.ons.gov.uk/peoplepopulationandcommunity/birthsdeathsandmarriages/death/s/adhocs/12724deathsregisteredweeklyinenglanduptoweekending25december2020provisio)] Date last accessed 23 July 2021

6  
7 13. UK Government, London. Coronavirus dashboard [Available from:

8 <https://coronavirus.data.gov.uk/>] Date last accessed 23 July 2021

9 14. Wickham, H., Averick, M., Bryan, J., Chang, W., D'Agostino McGowan, L., François, R.,  
10 et al. Welcome to the tidyverse. Journal of Open Source Software. 2019;4(43):1686. DOI:  
11 10.21105/joss.01686

12 15. Firke S. janitor: Simple Tools for Examining and Cleaning Dirty Data. R package  
13 version 2.1.0. 2021 [Available from: <https://CRAN.R-project.org/package=janitor>]

14 16. Therneau, T.M.. A Package for Survival Analysis in R. R package version 3.2-10 2021  
15 [Available from: <https://CRAN.R-project.org/package=survival>]

16 17. Fernihough, A. mfx: Marginal Effects, Odds Ratios and Incidence Rate Ratios for  
17 GLMs. R package version 1.2-2 2019 [Available from: [https://CRAN.R-](https://CRAN.R-project.org/package=mfx)  
18 [project.org/package=mfx](https://CRAN.R-project.org/package=mfx)]

19 18. Kassambara, A., Kosinski, M., Biecek, P., Fabian, S. survminer: Drawing Survival  
20 Curves using 'ggplot2'. R package version 0.4.9. 2021 [Available from: [https://CRAN.R-](https://CRAN.R-project.org/package=survminer)  
21 [project.org/package=survminer](https://CRAN.R-project.org/package=survminer)]

22 19. Balduzzi, S., Rütcke, G., Schwarzer G. How to perform a meta-analysis with R: a  
23 practical tutorial. Evidence-Based Mental Health. 2019;22:153-60.

24 20. UK Government, London. Guidance on protecting people who are clinically  
25 extremely vulnerable from COVID-19 2020 [Available from:

26 [https://www.gov.uk/government/publications/guidance-on-shielding-and-protecting-](https://www.gov.uk/government/publications/guidance-on-shielding-and-protecting-extremely-vulnerable-persons-from-covid-19/guidance-on-shielding-and-protecting-extremely-vulnerable-persons-from-covid-19)  
27 [extremely-vulnerable-persons-from-covid-19/guidance-on-shielding-and-protecting-](https://www.gov.uk/government/publications/guidance-on-shielding-and-protecting-extremely-vulnerable-persons-from-covid-19/guidance-on-shielding-and-protecting-extremely-vulnerable-persons-from-covid-19)  
28 [extremely-vulnerable-persons-from-covid-19](https://www.gov.uk/government/publications/guidance-on-shielding-and-protecting-extremely-vulnerable-persons-from-covid-19/guidance-on-shielding-and-protecting-extremely-vulnerable-persons-from-covid-19)] Date last accessed 23 July 2021

29 21. Strangfeld A, Schäfer M, Gianfrancesco MA, Lawson-Tovey S, Liew JW, Ljung L, et al.  
30 Factors associated with COVID-19-related death in people with rheumatic diseases: results  
31 from the COVID-19 Global Rheumatology Alliance physician-reported registry. Annals of the  
32 Rheumatic Diseases. 2021. DOI: [10.1136/annrheumdis-2020-219498](https://doi.org/10.1136/annrheumdis-2020-219498)

33 22. Office for National Statistics, London. Guidance for doctors completing Medical  
34 Certificates of Cause of Death in England and Wales. Available from:

35 [https://assets.publishing.service.gov.uk/government/uploads/system/uploads/attachment](https://assets.publishing.service.gov.uk/government/uploads/system/uploads/attachment_data/file/877302/guidance-for-doctors-completing-medical-certificates-of-cause-of-death-covid-19.pdf)  
36 [data/file/877302/guidance-for-doctors-completing-medical-certificates-of-cause-of-death-](https://assets.publishing.service.gov.uk/government/uploads/system/uploads/attachment_data/file/877302/guidance-for-doctors-completing-medical-certificates-of-cause-of-death-covid-19.pdf)  
37 [covid-19.pdf](https://assets.publishing.service.gov.uk/government/uploads/system/uploads/attachment_data/file/877302/guidance-for-doctors-completing-medical-certificates-of-cause-of-death-covid-19.pdf)] Date last accessed 23 July 2021

38 23. Office for National Statistics, London Impact of registration delays on mortality  
39 statistics in England and Wales: 2019 [Available from:

40 [https://www.ons.gov.uk/peoplepopulationandcommunity/birthsdeathsandmarriages/death](https://www.ons.gov.uk/peoplepopulationandcommunity/birthsdeathsandmarriages/death/s/articles/impactofregistrationdelaysonmortalitystatisticsinenglandandwales/2019)  
41 [s/articles/impactofregistrationdelaysonmortalitystatisticsinenglandandwales/2019](https://www.ons.gov.uk/peoplepopulationandcommunity/birthsdeathsandmarriages/death/s/articles/impactofregistrationdelaysonmortalitystatisticsinenglandandwales/2019)] Date  
42 last accessed 23 July 2021

43 24. Chief Coroner. Chief Coroner's Guidance No. 37 COVID-19 Deaths and Possible  
44 Exposure in the Workplace: Chief Coroner; 2020 [Available from:

45 [https://www.judiciary.uk/wp-content/uploads/2020/04/Chief-Coroners-Guidance-No-37-](https://www.judiciary.uk/wp-content/uploads/2020/04/Chief-Coroners-Guidance-No-37-28.04.20.pdf)  
46 [28.04.20.pdf](https://www.judiciary.uk/wp-content/uploads/2020/04/Chief-Coroners-Guidance-No-37-28.04.20.pdf)] Date last accessed 23 July 2021

47 25. Rees F, Doherty M, Grainge MJ, Lanyon P, Zhang W. The worldwide incidence and  
48 prevalence of systemic lupus erythematosus: a systematic review of epidemiological studies.  
49 Rheumatology. 2017;56(11):1945-61. DOI: [10.1093/rheumatology/kex260](https://doi.org/10.1093/rheumatology/kex260)

- 1
  - 2
  - 3
  - 4
  - 5
  - 6
  - 7
  - 8
  - 9
  - 10
  - 11
  - 12
  - 13
  - 14
  - 15
  - 16
  - 17
  - 18
  - 19
  - 20
  - 21
  - 22
  - 23
  - 24
  - 25
  - 26
  - 27
  - 28
  - 29
  - 30
  - 31
  - 32
  - 33
  - 34
  - 35
  - 36
  - 37
  - 38
  - 39
  - 40
  - 41
  - 42
  - 43
  - 44
  - 45
  - 46
  - 47
  - 48
  - 49
  - 50
  - 51
  - 52
  - 53
  - 54
  - 55
  - 56
  - 57
  - 58
  - 59
  - 60
26. Chen HL, Shen LJ, Hsu PN, Shen CY, Hall SA, Hsiao FY. Cumulative Burden of Glucocorticoid-related Adverse Events in Patients with Systemic Lupus Erythematosus: Findings from a 12-year Longitudinal Study. *J Rheumatol*. 2018;45(1):83-9.
27. Dixon W, Suissa S, Hudson M. The association between systemic glucocorticoid therapy and the risk of infection in patients with rheumatoid arthritis. *Arthritis Res Ther*. 2011;13(4):R129.
28. Youseff J, Novosad S, Winthrop K. Infection risk and safety of corticosteroid use. *Rheumatic diseases clinics of North America*. 2017;42:157.
29. Horby P, Lim WS, Emberson J, Mafham M, Bell J, Linsell L, et al. Effect of Dexamethasone in Hospitalized Patients with COVID-19 – Preliminary Report. *medRxiv*. 2020:2020.06.22.20137273.
30. van Paassen J, Vos JS, Hoekstra EM, Neumann KMI, Boot PC, Abrous SM. Corticosteroid use in COVID-19 patients: a systematic review and meta-analysis on clinical outcomes. *Critical Care*. 2020;24:696.
31. Gianfrancesco M, Hyrich KL, Al-Adely S, Carmona L, Danila MI, Gossec L, et al. Characteristics associated with hospitalisation for COVID-19 in people with rheumatic disease: data from the COVID-19 Global Rheumatology Alliance physician-reported registry. *Annals of the Rheumatic Diseases*. 2020;79(7):859-66. DOI: [10.1136/annrheumdis-2020-217871](https://doi.org/10.1136/annrheumdis-2020-217871)
32. Rutherford MA, Scott J, Karabayas M, Antonelou M, Gopaluni S, Gray D, et al. Risk factors for severe outcomes in patients with systemic vasculitis & COVID-19: a bi-national registry-based cohort study. *Arthritis & Rheumatology*. 2021.
33. Abani O, Abbas A, Abbas F, Abbas M, Abbasi S, Abbass H, et al. Tocilizumab in patients admitted to hospital with COVID-19 (RECOVERY): a randomised, controlled, open-label, platform trial. *The Lancet*. 2021;397(10285):1637-45.
34. Mehta P, Porter JC, Chambers RC, Isenberg DA, Reddy V. B-cell depletion with rituximab in the COVID-19 pandemic: where do we stand? *The Lancet Rheumatology*. 2020;2(10):e589-e90.
35. Kearns P, Siebert S, Gaskell C, Kirkham A, Pirrie S, Bowden S, et al. Examining the Immunological Effects of COVID-19 Vaccination in Patients with Conditions Potentially Leading to Diminished Immune Response Capacity—The OCTAVE Trial. 2021.
36. Avouac J, Drumez E, Hachulla E, Seror R, Georgin-Lavialle S, El Mahou S, et al. COVID-19 outcomes in patients with inflammatory rheumatic and musculoskeletal diseases treated with rituximab: a cohort study. *The Lancet Rheumatology*. 2021;3(6):e419-e26.
37. FAI2R/SFR/SNFMI/SOFREMIP/CRI/IMIDIATE consortium and contributors. Severity of COVID-19 and survival in patients with rheumatic and inflammatory diseases: data from the French RMD COVID-19 cohort of 694 patients. *Annals of the Rheumatic Diseases*. 2021;80(4):527-38.
38. Marques CDL, Kakehasi AM, Pinheiro MM, Mota LMH, Albuquerque CP, Silva CR, et al. High levels of immunosuppression are related to unfavourable outcomes in hospitalised patients with rheumatic diseases and COVID-19: first results of ReumaCoV Brasil registry. *RMD open*. 2021;7(1):e001461.
39. Williamson EJ, Walker AJ, Bhaskaran K, Bacon S, Bates C, Morton CE, et al. Factors associated with COVID-19-related death using OpenSAFELY. *Nature*. 2020;584(7821):430-6. DOI: [10.1038/s41586-020-2521-4](https://doi.org/10.1038/s41586-020-2521-4)
40. Clift AK, Coupland CAC, Keogh RH, Diaz-Ordaz K, Williamson E, Harrison EM, et al. Living risk prediction algorithm (QCOVID) for risk of hospital admission and mortality from

1  
2  
3 coronavirus 19 in adults: national derivation and validation cohort study. BMJ.

4 2020;371:m3731. DOI: <https://doi.org/10.1136/bmj.m3731>

5  
6 41. Cordtz R, Lindhardtsen J, Soussi BG, Vela J, Uhrenholt L, Westermann R, et al.

7 Incidence and severeness of COVID-19 hospitalization in patients with inflammatory  
8 rheumatic disease: a nationwide cohort study from Denmark. Rheumatology. 2020.

9 DOI: [10.1093/rheumatology/keaa897](https://doi.org/10.1093/rheumatology/keaa897)

10  
11 42. Shin YH, Shin JI, Moon SY, Jin HY, Kim SY, Yang JM, et al. Autoimmune inflammatory  
12 rheumatic diseases and COVID-19 outcomes in South Korea: a nationwide cohort study. The

13 Lancet Rheumatology. 2021. DOI: [https://doi.org/10.1016/S2665-9913\(21\)00151-X](https://doi.org/10.1016/S2665-9913(21)00151-X)

14 43. NHS Digital, London. COVID-19 – high risk shielded patient list identification

15 methodology London 2020 [Available from: [https://digital.nhs.uk/coronavirus/shielded-](https://digital.nhs.uk/coronavirus/shielded-patient-list/methodology)  
16 [patient-list/methodology](https://digital.nhs.uk/coronavirus/shielded-patient-list/methodology)] Date last accessed 23 July 2021

17  
18 44. Price E, MacPhie E, Kay L, Lanyon P, Griffiths B, Holroyd C, et al. Identifying  
19 rheumatic disease patients at high risk and requiring shielding during the COVID-19

20 pandemic. Clinical Medicine. 2020. <https://doi.org/10.7861/clinmed.2020-0149>

21  
22 45. Rutter, M., Lanyon, P.C., Sandhu, R., Batten, R., Garner, R., Little, J. et al. Estimation  
23 of the burden of shielding among a cross section of patients attending rheumatology clinics

24 with SLE – data from the BSR audit of Systemic Lupus Erythematosus. Rheumatology

25 (Oxford, England). 2020(October 14). DOI: <https://doi.org/10.1093/rheumatology/keaa620>

26  
27 46. RAIRDA. Chronic Crisis: The impact of COVID-19 on people with rare autoimmune  
28 rheumatic diseases. 2020 [Available from:

29 <https://rairdaorg.files.wordpress.com/2020/08/chronic-crisis-report-june-2020-1.pdf>] Date  
30 last accessed 23 July 2021

31  
32 47. Whitaker, H.J., Tsang, R.S., Byford, R., Andrews, N.J., Sherlock, J., Pillai, P.S., et al.

33 Pfizer-BioNTech and Oxford AstraZeneca COVID-19 vaccine effectiveness and immune

34 response among individuals in clinical risk groups. Pre-print. 2021. [Available from:

35 [https://khub.net/documents/135939561/430986542/RCGP+VE+riskgroups+paper.pdf/a6b5](https://khub.net/documents/135939561/430986542/RCGP+VE+riskgroups+paper.pdf/a6b54cd9-419d-9b63-e2bf-5dc796f5a91f)  
36 [4cd9-419d-9b63-e2bf-5dc796f5a91f](https://khub.net/documents/135939561/430986542/RCGP+VE+riskgroups+paper.pdf/a6b54cd9-419d-9b63-e2bf-5dc796f5a91f)] Date last accessed 23 July 2021  
37  
38  
39  
40  
41  
42  
43  
44  
45  
46  
47  
48  
49  
50  
51  
52  
53  
54  
55  
56  
57  
58  
59  
60