

# The Psychosocial Characteristics and Somatosensory Function of Children and Adolescents Who Meet the Criteria for Chronic Nociceptive Pain

Don Daniel O'Carroll<sup>1-3</sup>, Brendan D Ross<sup>4</sup>, Lorenzo Moscaritolo<sup>3</sup>, Nabeel Ahmed<sup>4</sup>,  
Jean A Ouellet<sup>2,5-7</sup>, Catherine E Ferland<sup>1-3,6-8,\*</sup>, Pablo M Ingelmo<sup>3,6-8,\*</sup>

<sup>1</sup>Department of Experimental Surgery, McGill University, Montreal, QC, Canada; <sup>2</sup>Department of Clinical Research, Shriners Hospitals for Children Canada, Montreal, QC, Canada; <sup>3</sup>Edwards Family Interdisciplinary Centre for Complex Pain, Montreal Children's Hospital, Montreal, QC, Canada; <sup>4</sup>Faculty of Medicine, McGill University, Montreal, QC, Canada; <sup>5</sup>Department of Pediatric Surgery, McGill University, Montreal, QC, Canada; <sup>6</sup>Department of Anesthesia, McGill University, Montreal, QC, Canada; <sup>7</sup>Research Institute-McGill University Health Centre, Montreal, QC, Canada; <sup>8</sup>Alan Edwards Research Center for Pain, McGill University, Montreal, QC, Canada

\*These authors contributed equally to this work

Correspondence: Pablo M Ingelmo, Edwards Family Interdisciplinary Centre for Complex Pain, Montreal Children's Hospital, B02-3525-1001 Boulevard Décarie, Montreal, H4A 1J3, Canada, Tel +1 514 412-4448, Fax +1 514 412-4341, Email pablo.ingelmo@mcgill.ca

**Purpose:** Nociceptive pain distinguishes individuals with pain and hypersensitivity in body regions with apparently normal tissues, without any signs of neuropathy, but with contribution of central and/or peripheral sensitization. There is a lack of literature describing nociceptive pain in the pediatric population. The objective of this study was to investigate the differences between pediatric patients with nociceptive pain compared with patients with non-nociceptive pain.

**Patients and Methods:** This study included 414 pediatric patients followed at an interdisciplinary centre for complex pain. All patients underwent an exhaustive pain assessment consisting of face-to-face interviews, validated self-report questionnaires and quantitative sensory testing. Recently established criteria for chronic nociceptive pain, and quantitative sensory testing was used to describe and stratify our cohort.

**Results:** One hundred and sixty-five patients (40%) were stratified as having possible nociceptive pain and two hundred and forty-nine (60%) patients, as non-nociceptive pain. Patients with nociceptive pain displayed pain hypersensitivity in the region of pain, more symptoms of panic and social phobia, and worse sleep quality than patients with non-nociceptive pain. The proportion of patients achieving a meaningful clinical outcome after completion of their treatment (medications, physiotherapy, psychology, nursing, social worker, and/or interventional procedures) was lower in patients with nociceptive pain (62%) than those without nociceptive pain (86%).

**Conclusion:** Our results suggest that patients who meet the criteria for nociceptive pain can be identified in a population of children and adolescents being treated in a center for complex pain. Combining screening with validated questionnaires and quantitative sensory testing facilitates the phenotyping and graded severity of patients with nociceptive pain in daily clinical practice.

**Keywords:** nociceptive pain, chronic pain, children, adolescents, quantitative sensory testing

## Introduction

Nearly one in five children and adolescents reports persistent or recurrent chronic pain.<sup>1</sup> In 2017, a third pain mechanism category alongside nociceptive and neuropathic pain, nociceptive pain, was introduced by the International Association for the Study of Pain (IASP).<sup>2</sup> Nociceptive pain is defined as “pain that arises from altered nociception despite no clear evidence of actual or threatened tissue damage causing the activation of peripheral nociceptors or evidence for disease or lesion of the somatosensory system causing the pain”.<sup>2</sup>

Research on nociceptive pain has used quantitative sensory testing (QST) to assess altered nociceptive processing.<sup>3,4</sup> Recently, clinically useful criteria for nociceptive pain were established by the IASP Terminology Task Force (TTF).<sup>5</sup> In

summary, chronic nociplastic pain is defined as 1) pain duration >3 months, 2) a regional rather than discrete distribution, 3) not entirely explained by nociceptive or neuropathic pain mechanisms, and 4) displaying clinical signs of pain hypersensitivity in the region of pain. The presence of a history of pain hypersensitivity in the region of pain and defined co-morbidities (eg, sleep disturbance and cognitive problems) strengthens the probability of nociplastic pain.<sup>5</sup> These criteria can be assessed through validated self-reported questionnaires and quantitative sensory testing.

Fibromyalgia, complex regional pain syndrome and irritable bowel syndrome are examples of chronic pain conditions which meet the criteria for nociplastic pain.<sup>2</sup> These chronic pain conditions are also observed in pediatric populations, and studies have displayed altered nociceptive processing and the presence of comorbidities in youth.<sup>6–8</sup> However, there is a lack of knowledge in describing nociplastic pain in pediatrics and whether the clinical criteria may also reflect what is observed in the pediatric population.

The objective of the study was to investigate differences between children and adolescents who do and do not meet the criteria for nociplastic pain. The aim was to characterize patients followed at an interdisciplinary center for complex pain based on variety of biopsychosocial factors, as well as their clinical outcomes, as recommended by the Pediatric Initiative on Methods, Measurement, and Pain Assessments in Clinical Trials (PedIMPACT).<sup>9,10</sup> We hypothesized that significant differences in the biopsychosocial factors and clinical outcomes will be observed between patients who do meet the criteria for nociplastic pain when compared with children who do not meet the criteria for nociplastic pain.

## Materials and Methods

Ethics approval was obtained prior to the beginning of the recruitment from the Research Ethics Board of the McGill University Health Centre (2019–4887, 2019–4670). The study was conducted in accordance with the Declaration of Helsinki. Patients from the Edwards Family Interdisciplinary Center for Complex Pain of the Montreal Children's Hospital were approached to approve the collection of their medical data from their electronic charts for research purposes. Written informed consent was provided by patients 14 years old and older, or their parent/legal guardian, along with the assent of the patient if under 14 years old, prior to them being included in the analysis.

## Population

The retrospective analysis included patients assisted by the Edwards Family Interdisciplinary Center for Complex Pain that underwent QST assessment between May 2016 and September 2021, and reported chronic pain defined as persistent or recurrent pain for at least three months. The team of the Edwards Family Interdisciplinary Center for Complex Pain accepts patients with chronic pain independent of the type or diagnosis, referred primarily by specialists (more than 90%) rather than primary care doctors or general pediatricians.

## Nociplastic Pain

We used a recently established clinical criteria and grading system for chronic nociplastic pain affecting the musculoskeletal system to stratify our cohort as meeting or not meeting the criteria for nociplastic pain as a dominant pain mechanism.<sup>2,5,11</sup> We defined patients as meeting the criteria for nociplastic pain<sup>5</sup> when they have (1) regional pain rather than discrete/distinct in distribution, (2) with no evidence that nociceptive or neuropathic pain is entirely responsible for the pain, and (3) with the presence of evoked pain hypersensitivity that can be elicited clinically in the region of pain (ie presence of peripheral or central sensitization; allocated to a mechanical or thermal hyperalgesia somatosensory profile<sup>12</sup>).

## Clinical Outcome Measures at the Initial Clinic Visit

Patient demographic characteristics, and past hospitalizations/surgeries were collected through questionnaires completed before the first appointment. Patients and parents also completed validated pain-related questionnaires. Current pain medication intake, previous pain medication taken, and previous medical treatment for pain were also collected. The team discussed the patient and parents' self-assessment before the initial evaluation and were confirmed through face-to-face interviews.

Before the initial evaluation, each patient underwent a specific protocol of mechanical and thermal QST to obtain a comprehensive profile of somatosensory functioning and pain modulatory responses. The results of the QST were available during the first evaluation and were used to personalize the treatment program of each patient.<sup>13,14</sup>

During an interdisciplinary face-to-face interview, we evaluated the intensity, duration and frequency of the pain over the previous month using a numerical rating scale (NRS) ranging from 0 to 10, representing no pain at all and the worst pain imaginable, respectively. A pain specialist and a physiotherapist then conducted a detailed physical exam. This was followed by interviews with the patients/caregivers conducted by a psychologist, a social worker and a nurse clinician. At the end of the evaluation, the diagnosis and personalized treatment plan (eg medications, physiotherapy, psychology, nursing, social worker, and interventional procedures) was discussed with the patients and their parents/caregivers.<sup>13–18</sup> Medication prescribed included non-steroidal anti-inflammatory drugs (eg ibuprofen, celecoxib), muscle relaxants (eg baclofen), opiates (eg morphine), anti-depressants (eg amitriptyline), anti-epileptics (eg gabapentin), anti-migraine agents, oral corticosteroids, sedatives (eg benzodiazepines), or other analgesics and antipyretics agents (eg acetaminophen, clonidine, magnesium, etc.). Interventional procedures included primarily peripheral nerve and interfascial plane single blocks, pulsed radiofrequency or local infiltrations.<sup>15</sup>

The evaluations, treatment, and follow-up provided by the Center for Complex Pain are entirely covered by the Quebec public health system. All the data gathered from the auto-evaluation and from the initial evaluation was prospectively documented in the database of the Center for Complex Pain and transferred to the patient's electronic chart.

## Quantitative Sensory Testing

We adapted our QST protocol from previous studies (see [Supplementary Material](#) for more details).<sup>19–21</sup> Mechanical QST were performed on a control area (left hand) followed by the affected area (the most painful location reported by the patient). Thermal QST were performed on the forearms of the patient.

## Patient- and Parent-Reported Psychosocial Outcome Measures

The Functional Disability Inventory (FDI) questionnaire,<sup>22</sup> Revised Child Anxiety and Depression Scale (RCADS) questionnaire,<sup>23</sup> and Pittsburgh Sleep Quality Index (PSQI) questionnaire<sup>24</sup> was completed by patients to detect different levels of disability, children's self-report of depression and anxiety, and sleep quality. The RCADS constitutes subscales representing separation anxiety disorder, generalized anxiety disorder, panic disorder, social phobia, obsessive compulsive disorder, and low mood (major depressive disorder). The Douleur Neuropathique 4 (DN4) questionnaire was completed by patients and their physicians to identify if their pain had a neuropathic component.<sup>25</sup> The Pain Catastrophizing Scale for Children (PCS-C) was completed by patients to assess their negative thoughts or feelings while experiencing pain.<sup>26</sup>

The Impact on Family Scale (IOFS) was completed by parents of patients to assess family burden in the pediatric care context.<sup>27,28</sup> A higher score represents a higher negative impact on the social and familial systems caused by a chronic childhood illness.<sup>27</sup> The Pain Catastrophizing Scale for Parents (PCS-P) was completed by parents of patients to assess their negative thoughts or feelings while their child is experiencing pain.<sup>29</sup>

## Meaningful Clinical Outcome and End of Treatment

We used the patients' global impression of change scale (PGIC) as the primary clinical outcome measures.<sup>30,31</sup> The PGIC is a 7-point scale and reflects a patient's belief about treatment efficacy and overall improvement in their health condition. The treatment provided by the Center from Complex Pain ends when the patient achieved a meaningful improvement defined as the patient having normal school attendance, normal physical function, no pain, not using pain medication and reporting a PGIC score of 6 or 7.<sup>10,16</sup>

Whether patients were still receiving services at the center for complex pain as of October 2021 was noted. Other causes to be discharged from the program included transfer to adult care or to another specialist, lost to follow-up, and not compliant with the treatment.

## Statistical Analysis

Available data were analyzed using R Studio and plotted using Prism-GraphPad. An average z-score (eg,  $z\text{-score} = \frac{\text{affected site}_{\text{patient}} - \text{control site}_{\text{patient cohort mean}}}{\text{control site}_{\text{patient cohort SD}}}$ )<sup>12</sup> for all QST parameters of the control and affected area was calculated for each patient. A positive z-score indicates a gain of function (hyperalgesia) while a negative score indicates a loss of function (sensory loss). A deterministic approach was used to phenotype the somatosensory profile of our cohort (sensory loss, mechanical hyperalgesia, thermal hyperalgesia or normative QST comparable to pain-free controls; see [Supplementary Table 1](#) for more details).<sup>32,33</sup>

Differences in all outcome measures extracted from the initial visit at the center between patients allocated to meet criteria for nociplastic and non-nociplastic pain were determined with the chi-square test or Student's *t*-test. Cohen's *d* values were calculated for significant p-values of Student's *t*-tests to determine the effect size (0.2 – small; 0.5 – medium, 0.8 – large). For patients no longer being followed by the center of complex pain, differences in the PGIC score, number of days between the initial visit date and end/transfer date, or treatment offered were determined using the Student's *t*-test, an analysis of variance (ANOVA) model and the chi-square test, respectively.

## Results

Four hundred and fifty patients underwent QST assessment between May 2016 and September 2021. The medical data of 18 patients was incomplete and 18 additional patients did not report pain longer than three months. Therefore, 414 patients aged 8 to 18 years were included in the analysis ([Figure 1](#) and [Table 1](#)). The clinical presentations included patients with chronic widespread pain (*n* = 76), complex regional pain syndrome type I (*n* = 18), chronic primary (*n* = 33) or secondary (*n* = 12) headache or orofacial pain, chronic primary (*n* = 13) or secondary (*n* = 5) visceral pain, chronic primary (*n* = 115) or secondary (*n* = 75) musculoskeletal pain, chronic postsurgical or posttraumatic pain (*n* = 48), and chronic secondary neuropathic pain (*n* = 19). On average, patients reported mild-moderate pain the day of the QST assessment, but moderate-severe pain over the last month. Most patients reported pain for more than 12 months (*n* = 296), daily (*n* = 339), and constant painful episodes (*n* = 312) ([Table 1](#)).

## Stratification for Nociplastic Pain Using Quantitative Sensory Testing

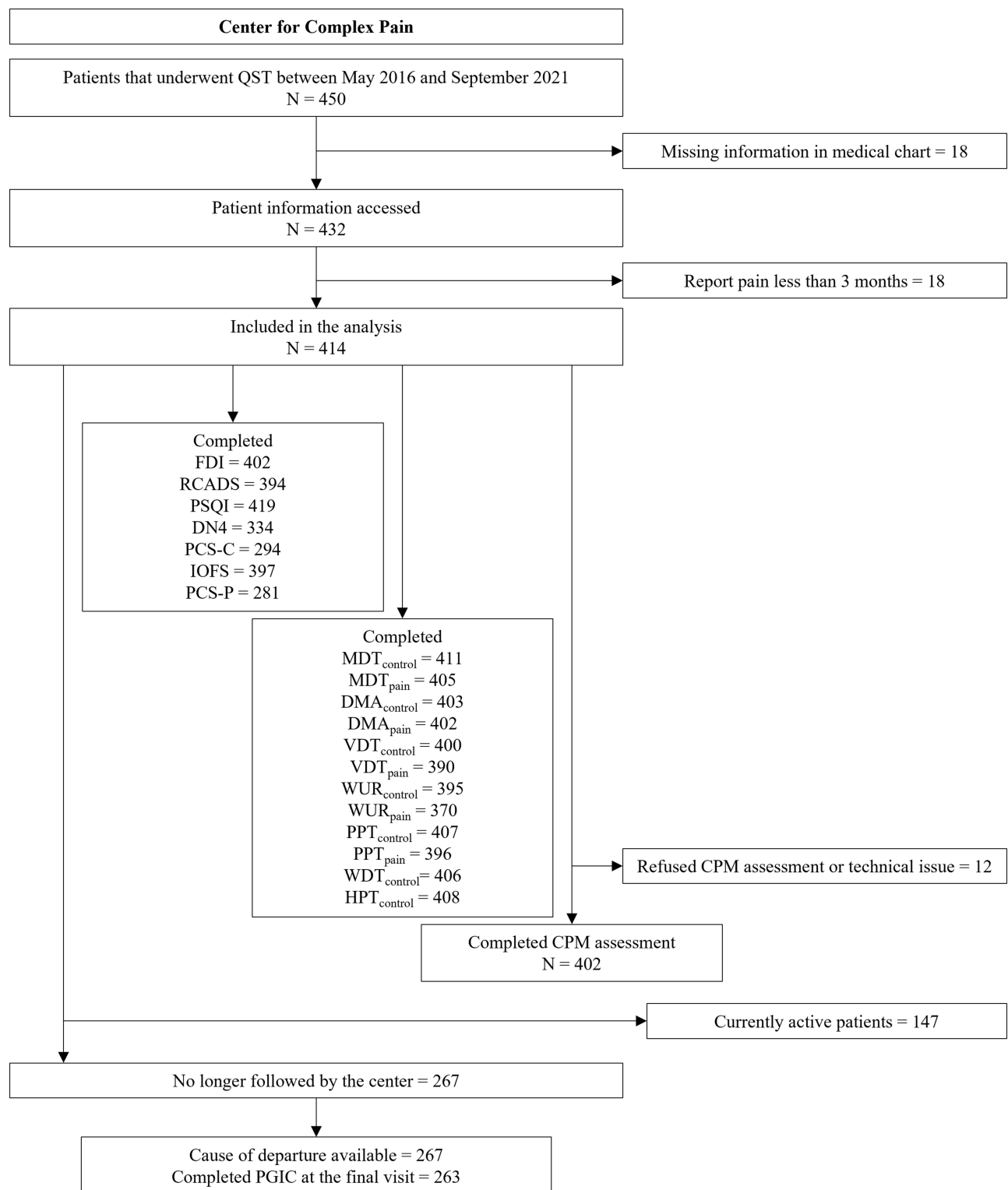
One hundred and sixty-five patients were categorized as possible nociplastic pain (40%) and two hundred and forty-nine patients presented non-nociplastic mechanisms (60%). Since evoked pain hypersensitivity was part of the criteria for meeting nociplastic pain, patients with possible nociplastic pain presented with a thermal hyperalgesia and mechanical hyperalgesia somatosensory profile more often than those with non-nociplastic pain ([Figure 2A](#)). Patients with possible nociplastic pain displayed more significant loss of function in regard to mechanical and vibration detection. Moreover, patients with possible nociplastic displayed evoked pain hypersensitivity to mechanical and thermal stimuli ([Figure 2B](#)). In addition, patients with possible nociplastic pain reported higher pain intensity the day of the assessment and over the last month ([Table 1](#)).

Temporal summation of pain (TSP) and conditioned pain modulation (CPM) assessment showed a spectrum of facilitatory and inhibitory pain modulatory responses in patients who did and did not meet the criteria for nociplastic pain ([Figure 3A–D](#)). No significant difference was observed in the CPM efficiency or TSP between patients with possible nociplastic pain and non-nociplastic pain ([Table 2](#)).

## Psychosocial Characteristics

Controlling for the patients' current and average pain over the last month, patients with nociplastic pain reported significantly higher scores for panic disorder, social phobia, and poor sleep quality than patients without nociplastic pain ([Figure 4](#)).

The impact on family scales scores was comparable between parents of children with and without nociplastic pain ([Table 2](#)). However, the pain catastrophizing scores of parents of children with nociplastic pain were higher than those without nociplastic pain ([Table 2](#)).



**Figure 1** Flow chart of patient inclusion and evaluations.

**Abbreviations:** FDI, functional disability inventory; RCADS, revised child anxiety and depression scale; PSQI, Pittsburgh sleep quality index; DN4, douleur neuropathique 4 questionnaire; PCS-C, pain catastrophizing scale – child version; IOFS, impact on family scale; PCS-P, pain catastrophizing scale – parent version; control, control area test site; pain, most painful location test site; MDT, mechanical detection threshold; DMA, dynamic mechanical allodynia; VDT, vibration detection threshold; WUR, wind-up ratio; PPT, pressure pain threshold; WDT, warm detection threshold; HPT, heat pain threshold; CPM, conditioned pain modulation; PGIC, patient global impression of change.

**Table 1** Characteristics of Cohort

Variable	All Patients (n = 414)	Possible Nociplastic Pain (n = 165)	Not Nociplastic Pain (n = 249)	Test Statistic	p-value	d-value
<b>Age entering the center of complex care, mean ± SD (range)</b>	14.87 ± 2.12 (4.1–18.0)	15.00 ± 2.07 (8.8–17.9)	14.79 ± 2.15 (4.1–18.0)	0.95	0.343	
<b>Age undergoing QST, mean ± SD (range)</b>	14.92 ± 2.04 (8.4–18.1)	15.02 ± 2.06 (8.8–17.9)	14.86 ± 2.02 (8.4–18.1)	0.80	0.423	
<b>Gender, n (%)</b>				2.41	0.121	
Female	343 (82.85)	144 (87.27)	199 (79.92)			
Male	65 (15.70)	20 (12.12)	45 (18.07)			
<b>Race*, n (%)</b>				0.88	0.347	
White	349 (84.30)	143 (86.67)	206 (82.73)			
Person of color	65 (15.70)	22 (13.33)	43 (17.27)			
<b>Past hospitalizations (&gt;48 hours), n (%)</b>				0.16	0.691	
No	247 (59.66)	96 (58.18)	151 (60.64)			
Yes	167 (40.34)	69 (41.82)	98 (39.36)			
<b>Past surgeries, n (%)</b>				5.34	0.021	
No	231 (55.80)	104 (63.03)	127 (51.00)			
Yes	183 (44.20)	61 (36.97)	122 (49.00)			
<b>Primary diagnosis, n (%)</b>				10.95	0.140	
Chronic widespread pain	76 (18.36)	39 (23.64)	37 (14.86)			
Complex regional pain syndrome type I	18 (4.35)	13 (7.88)	5 (2.01)			
Chronic primary headache and orofacial pain	33 (7.97)	9 (5.45)	24 (9.64)			
Chronic primary visceral pain	13 (3.14)	5 (3.03)	8 (3.21)			
Chronic primary musculoskeletal pain	115 (27.78)	54 (32.73)	61 (24.50)			
Chronic postsurgical and posttraumatic pain	48 (11.59)	0	48 (19.28)			
Chronic secondary neuropathic pain	19 (4.59)	0	19 (7.63)			
Chronic secondary headache and orofacial pain (non-specific)	12 (2.90)	6 (3.64)	6 (2.41)			
Chronic secondary visceral pain	5 (1.21)	2 (1.21)	3 (1.20)			
From obstruction/distension	1 (0.24)	0	1 (0.40)			
From persistent inflammation	4 (0.97)	2 (1.21)	2 (0.80)			
Chronic secondary musculoskeletal pain	75 (18.12)	37 (22.42)	38 (15.26)			
From persistent inflammation	20 (4.83)	10 (6.06)	10 (4.02)			
Due to disease of the nervous system	3 (0.72)	1 (0.61)	2 (0.80)			
From structural osteoskeletal pain	51 (12.32)	26 (15.76)	25 (10.04)			
Non-specific	1 (0.24)	0	1 (0.40)			
<b>Pain before QST assessment (NRS 0–10), mean ± SD</b>	3.59 ± 2.63	4.08 ± 2.63	3.27 ± 2.58	3.07	0.002	0.310
<b>Average pain over the last month (NRS 0–10), mean ± SD</b>	6.05 ± 1.75	6.29 ± 1.64	5.89 ± 1.80	2.29	0.023	0.226
<b>Duration of pain, n (%)</b>				1.49	0.476	
3 to 6 months	39 (9.42)	12 (7.27)	27 (10.84)			
6 to 12 months	79 (19.08)	32 (19.39)	47 (18.88)			
More than 12 months	296 (71.50)	121 (73.33)	175 (70.28)			
<b>Frequency of pain, n (%)</b>				2.76	0.429	
Once a day	339 (81.88)	139 (84.24)	200 (80.32)			
Every second day	45 (10.87)	19 (11.52)	26 (10.44)			
Once a week	18 (4.35)	4 (2.42)	14 (5.62)			
Once a month	9 (2.17)	3 (1.82)	6 (2.41)			

(Continued)

Table I (Continued).

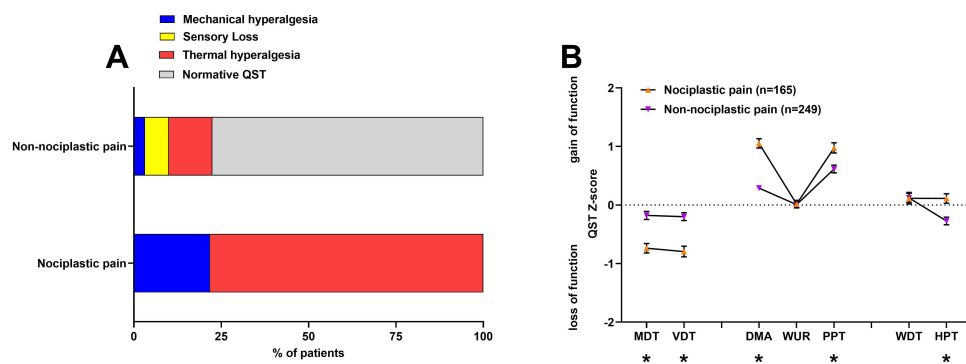
Variable	All Patients (n = 414)	Possible Nociceptive Pain (n = 165)	Not Nociceptive Pain (n = 249)	Test Statistic	p-value	d-value
<b>Duration of painful episode, n (%)</b>				4.74	0.192	
Few seconds	9 (2.17)	2 (1.21)	7 (2.81)			
Few minutes	36 (8.70)	10 (6.06)	26 (10.44)			
Few hours	57 (13.77)	27 (16.36)	30 (12.05)			
Constant	312 (75.36)	126 (76.36)	186 (74.70)			
<b>Taking medication for pain prior to entering the center of complex care, n (%)</b>	164 (39.61)	62 (37.58)	102 (40.96)	0.35	0.557	
<b>Received medication for pain prior to entering the center of complex care, n (%)</b>	371 (89.61)	154 (93.33)	217 (87.15)	3.44	0.064	
<b>Received treatment for pain (eg physiotherapy, osteopathy, chiropractor, etc.) prior to entering the center of complex care, n (%)</b>	283 (68.36)	114 (69.09)	169 (67.87)	0.02	0.878	

**Notes:** Percentages do not always add up to 100% due to missing data for some variables. \*Due to low frequency of some racial groups, races typically identified by Statistics Canada as a visible minority group (American Indian or Alaska Native, Asian, Black or African American, Latin American, Arab, and Mixed Race) were collapsed into a single category. Cohen's d represents the effect size of statistically significant differences between the possible nociceptive and not nociceptive pain groups (0.2 – small; 0.5 – medium, 0.8 – large). **Abbreviation:** QST, quantitative sensory testing; NRS, numerical rating scale.

## Meaningful Clinical Outcome and End of Treatment

Out of 267 patients no longer followed by the center of complex pain, 149 patients (56%) ended treatment and were discharged from the center and 85 patients (32%) were transferred to another clinic, institution or specialist, or transferred to an adult center. The remaining patients were either lost to follow-up (5%) or were non-compliant to the planned treatment (8%).

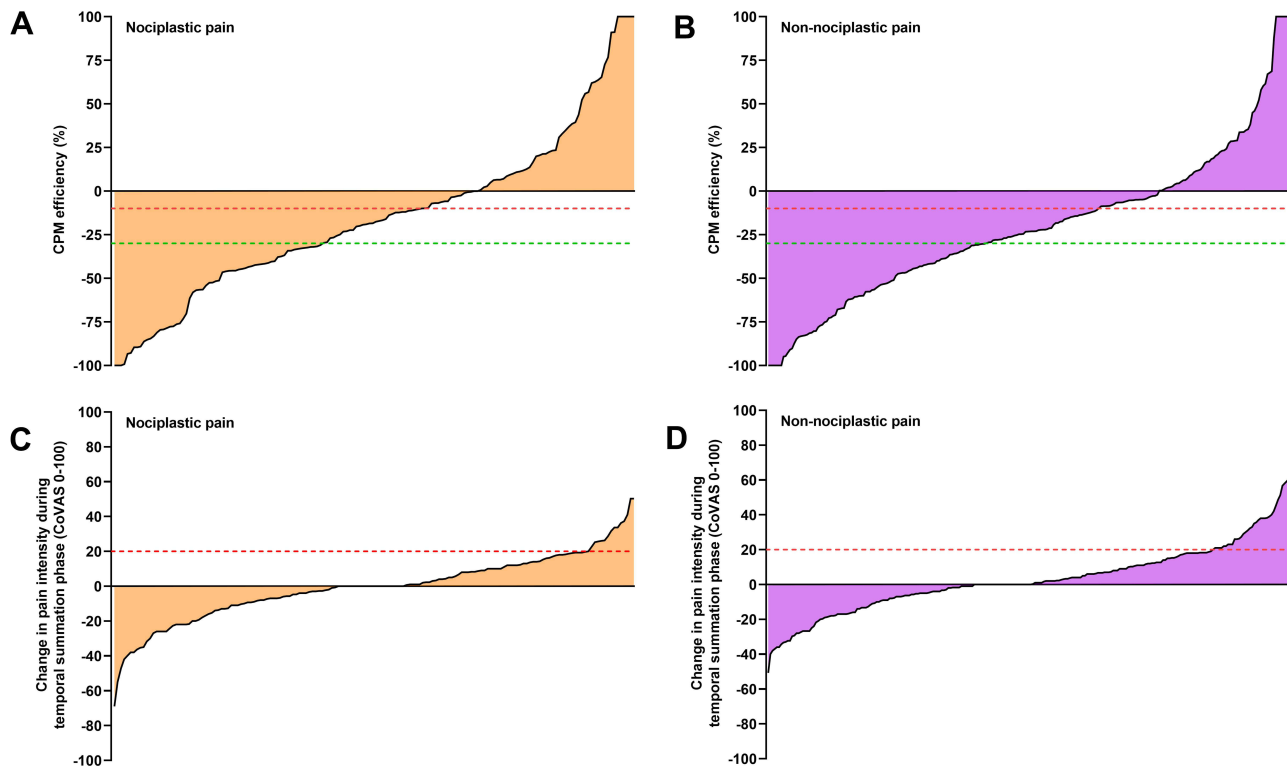
Sixty-one (41%) patients with nociceptive pain and eighty-eight (59%) patients without nociceptive pain completed treatment and were discharged from the center. The proportion of patients achieving a meaningful clinical outcome after completion of their treatment was significantly lower in patients with nociceptive pain (n = 38; 62%) than those without nociceptive pain (n = 76; 86%), ( $\chi^2 = 10.31$ , p = 0.001; Figure 5A). Thirty-nine (46%) patients with nociceptive pain and forty-six (54%) patients without nociceptive pain were transferred to another clinic, institution or specialist, or transferred to an adult center. The proportion of patients not achieving a meaningful clinical outcome upon transfer from the center



**Figure 2** Somatosensory profiles in children and adolescents seen at an interdisciplinary center for complex pain. **(A)** The proportion of patients with reference to the distinct somatosensory profiles is represented identification of nociceptive pain affecting the patient. **(B)** Individual patient thresholds were converted into z-scores calculated with reference to within- and between cohort control data. The z-score plot for each individual patient was grouped according to the identification of nociceptive pain affecting the patient. Patients with nociceptive pain in our cohort were defined as 1) pain being regional rather than discrete in distribution, 2) no evidence that nociceptive or neuropathic pain is entirely responsible for the pain, and 3) presence of evoked pain hypersensitivity that can be elicited clinically in the region of pain (ie presence of peripheral or central sensitization; allocated to the mechanical or thermal hyperalgesia somatosensory profile). Data points = mean  $\pm$  SEM. \*Indicates a significant difference (p<0.05) in the QST z-score between patients with and without nociceptive pain affecting the patient.

**Abbreviations:** QST, quantitative sensory testing; MDT, mechanical detection threshold; VDT, vibration detection threshold; DMA, dynamic mechanical allodynia; WUR, wind-up ratio; PPT, pressure pain threshold; WDT, warm detection threshold; HPT, heat pain threshold.





**Figure 3** Dynamic quantitative sensory testing shows a spectrum of facilitatory and inhibitory pain modulation responses in children and adolescents seen at an interdisciplinary center for complex pain. **(A)** Conditioned pain modulation efficiency shows a spectrum of individual responses in patients with nociceptive pain and **(B)** non-nociceptive pain. Bars = individual participants. The green dotted line marks the cutoff between an optimal and a suboptimal CPM efficiency, while the red dotted line marks the cutoff between a suboptimal and an inefficient CPM efficiency. **(C)** The change in pain intensity during the temporal summation phase of the tonic heat stimulus also shows a spectrum of individual responses in patients with nociceptive pain and **(D)** non-nociceptive pain. Bars = individual participants. The red dotted line marks the cutoff for a significant increase of 20/100 in pain intensity (ie, presence of temporal summation of pain).

**Abbreviations:** CPM, conditioned pain modulation; CoVAS, computerized visual analogue scale.

was similar between patients with nociceptive pain ( $n = 33$ ; 85%) and without nociceptive pain ( $n = 41$ ; 89%) ( $\chi^2 = 0.07$ ,  $p = 0.788$ ; **Figure 5A**).

The treatment time of patients discharged from the center, or the time patients are transferred to another center or adult care was similar between patients with and without nociceptive pain, when correcting for their age at admission to the clinic (**Figure 5B and C**).

No significant association was observed between the planned treatment of patients with or without nociceptive pain whether they completed their treatment or were transferred (**Table 3**).

## Discussion

In this study, we were able to identify children and adolescents with nociceptive pain in a sample of patients assisted in a center for complex pain. Using self-reported questionnaires and QST, patients who meet the criteria for nociceptive pain displayed differences regarding their biopsychosocial factors and clinical outcomes when compared to patients with non-nociceptive pain.

With the recent introduction of the terminology of nociceptive pain, there is still limited data characterizing this pain mechanism and its prevalence. A study on adults with multiple sclerosis and chronic pain identified that 50% had nociceptive pain with or without neuropathic pain,<sup>34</sup> while a study on adults with symptomatic hip OA observed that 23% of their cohort displayed neuropathic, nociceptive, or mixed pain.<sup>35</sup> Nevertheless, 40% of our sample were classified as possible nociceptive pain. Studies in pediatrics with chronic pain conditions in which nociceptive pain may be present, such as fibromyalgia, complex regional pain syndrome and irritable bowel syndrome, have provided evidence of altered nociceptive processing in these conditions through quantitative sensory testing.<sup>6–8</sup> Similar to our findings, they have



**Table 2** Characteristics of Patient Sample with or without Possible Nociceptive Pain

Variable	Nociceptive Pain (n = 165)	Not Nociceptive Pain (n = 249)	Test Statistic	p-value	Effect Size
<b>Pain modulatory responses</b>					
<b>CPM efficiency (%), mean ± SD</b>	-15.40 ± 46.86	-21.30 ± 42.80	1.28	0.202	
Inefficient (≤30), n (%)	66 (40.00)	89 (35.74)	0.92	0.630	
Suboptimal (-30-10), n (%)	30 (18.18)	52 (20.88)			
Optimal (≥10), n (%)	64 (38.79)	101 (40.56)			
<b>TSP (NRS -100+100), mean ± SD</b>	-0.70 ± 19.12	2.67 ± 19.18	-1.73	0.085	
Absence (≤+19), n (%)	146 (88.48)	205 (82.33)	2.27	0.132	
Presence (≥+20), n (%)	15 (9.09)	36 (14.46)			
<b>Patient-reported outcome measures</b>					
<b>Functional Disability Inventory</b>					
Total score, mean ± SD	20.37 ± 10.48	19.40 ± 10.98	0.05	0.832	
No/minimal disability (0-12), n (%)	38 (23.03)	76 (30.52)	6.77	0.080	
Mild disability (13-20), n (%)	51 (30.91)	56 (22.49)			
Moderate disability (21-29), n (%)	48 (29.09)	58 (23.29)			
Severe disability (≥30), n (%)	26 (15.76)	49 (19.68)			
<b>Revised Child Anxiety and Depression Scale</b>					
<b>Separation Anxiety Disorder Total T-score, mean ± SD</b>					
Below clinical threshold (≤64), n (%)	61.34 ± 17.40	59.16 ± 16.95	2.34	0.127	
Borderline clinical threshold (65-69), n (%)	94 (56.97)	151 (60.64)	1.26	0.534	
Above clinical threshold (≥70), n (%)	21 (12.73)	30 (12.05)			
<b>Generalized Anxiety Disorder Total T-score, mean ± SD</b>					
Below clinical threshold (≤64), n (%)	44 (26.67)	54 (21.69)	2.58	0.109	
Borderline clinical threshold (65-69), n (%)	46.11 ± 10.03	44.46 ± 9.35	1.73	0.422	
Above clinical threshold (≥70), n (%)	151 (91.52)	229 (91.97)			
<b>Panic Disorder Total T-score, mean ± SD</b>					
Below clinical threshold (≤64), n (%)	5 (3.03)	4 (1.61)	6.48	0.011	0.016
Borderline clinical threshold (65-69), n (%)	3 (1.82)	2 (0.80)	5.12	0.078	
Above clinical threshold (≥70), n (%)	57.10 ± 14.27	53.76 ± 13.88			
<b>Social Phobia Total T-score, mean ± SD</b>					
Below clinical threshold (≤64), n (%)	113 (68.48)	190 (76.31)	6.09	0.014	0.015
Borderline clinical threshold (65-69), n (%)	16 (9.70)	16 (6.43)	0.93	0.629	
Above clinical threshold (≥70), n (%)	30 (18.18)	29 (11.65)			
<b>Obsessive-Compulsive Disorder Total T-score, mean ± SD</b>					
Below clinical threshold (≤64), n (%)	39.67 ± 11.30	36.83 ± 11.08	3.55	0.060	
Borderline clinical threshold (65-69), n (%)	154 (93.33)	226 (90.76)	1.15	0.564	
Above clinical threshold (≥70), n (%)	1 (0.61)	4 (1.61)			
<b>Major Depressive Disorder Total T-score, mean ± SD</b>					
Below clinical threshold (≤64), n (%)	4 (2.42)	5 (2.01)	3.82	0.051	
Borderline clinical threshold (65-69), n (%)	50.88 ± 10.05	49.13 ± 9.57	1.19	0.550	
Above clinical threshold (≥70), n (%)	147 (89.09)	219 (87.95)			
<b>Pittsburgh Sleep Quality Index</b>					
Total score	10.05 ± 4.10	8.91 ± 4.05	5.08	0.025	0.012
Good sleep quality (≤4), n (%)	20 (12.12)	32 (12.85)	0.02	0.915	
Poor sleep quality (≥5), n (%)	144 (87.27)	213 (85.54)			
<b>Douleur Neuropathique 4 questionnaire</b>					
Total score, mean ± SD	3.35 ± 2.06	2.91 ± 1.96	2.45	0.118	
Not neuropathic (≤3), n (%)	80 (48.48)	116 (46.59)	0.00	1.000	
Likely neuropathic (≥4), n (%)	43 (26.06)	62 (24.90)			
<b>Pain Catastrophizing Scale - Child, mean ± SD</b>					
Total score	29.42 ± 11.19	26.56 ± 11.80	2.44	0.120	
Low catastrophizers (0-14), n (%)	14 (8.48)	35 (14.06)	3.37	0.185	

(Continued)

**Table 2** (Continued).

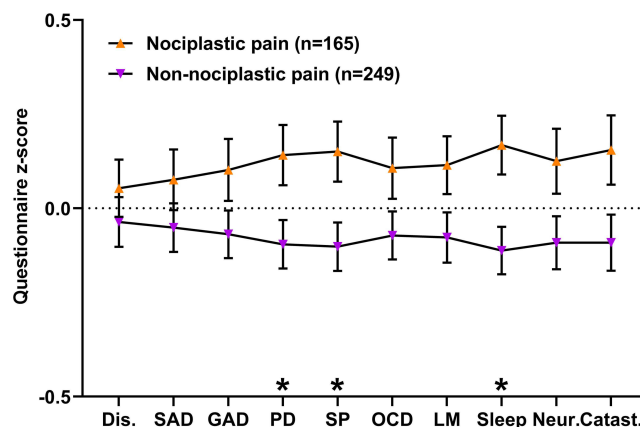
Variable	Nociplastic Pain (n = 165)	Not Nociplastic Pain (n = 249)	Test Statistic	p-value	Effect Size
Moderate catastrophizers (15–25), n (%)	24 (14.55)	49 (19.68)			
High catastrophizers (≥26), n (%)	71 (43.03)	101 (40.56)			
<b>Parent-reported outcome measres</b>					
<b>Impact on Family Scale, mean ± SD</b>	30.89 ± 11.27	28.71 ± 12.03	1.83	0.067	
<b>Pain Catastrophizing Scale - Parent, mean ± SD</b>	26.05 ± 11.43	22.99 ± 11.63	2.15	0.033	0.265

**Notes:** Percentages do not always add up to 100% due to missing data for some variables. Test statistic for chi-square test or Student's t test dependent on whether the variable was discrete or continuous, respectively. The F-test statistic is reported specifically for the total scores for the patient reported outcome measures. Size effect of significant Student's t test represented by Cohen's d-value: 0.2 (small), 0.5 (moderate), 0.8 (large). Size effect of significant analysis of covariance for the patient reported outcome measures represented by generalized eta squared value: 0.01 (small), 0.06 (moderate), 0.14 (large).

**Abbreviations:** CPM, conditioned pain modulation; TSP, temporal summation of pain; NRS, numerical rating scale.

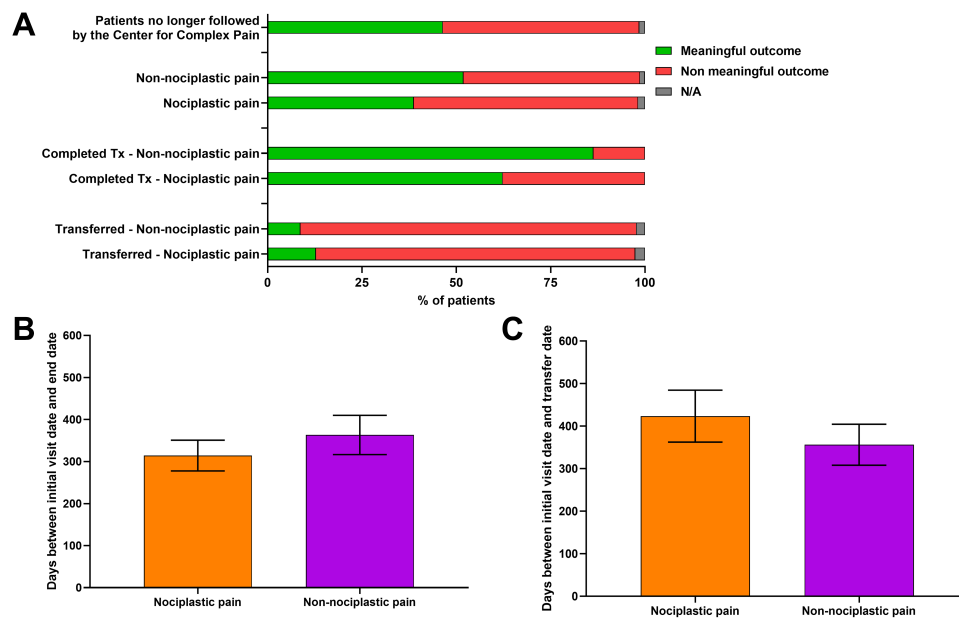
observed sensitization in the region of pain or poor functioning of the endogenous inhibitory pain pathways despite no clear lesion in the somatosensory system. Our results therefore provide evidence that nociplastic pain can be possibly identified in the clinical practice with the criteria described by Kosek et al<sup>5</sup> and quantitative sensory testing. However, additional research is warranted to determine the prevalence of possible nociplastic in distinct pediatric chronic pain conditions.

Patients with nociplastic pain displayed more symptoms of panic disorder and social phobia, and worse sleep quality when compared to patients with non-nociplastic pain. Studies in adults with chronic pain conditions in which nociplastic pain may be present highlight that these comorbidities contribute to predicting the responsiveness of patients to pharmacological and non-pharmacological approaches.<sup>5</sup> Furthermore, studies in pediatrics have shown that pain widespreadness, which may involve nociplastic pain mechanisms such as altered brain function,<sup>36</sup> has been associated with poor pain-related pain outcomes such as pain interference, pain catastrophizing, fatigue, anxiety, and depression.<sup>37</sup> Although pain widespreadness was not reported in our sample, we may hypothesize that pediatric patients with possible nociplastic pain may also display altered brain function leading to poorer pain-related outcomes. Notably, the parents/caregivers of patients with nociplastic pain reported higher pain catastrophizing. These findings can also be associated with social learning mechanisms and the social communication model of pain stressing the need for family interventions for patients with possible nociplastic pain.<sup>38</sup> However, although a significant difference was observed



**Figure 4** Psychosocial characteristics in children and adolescents seen at an interdisciplinary center for complex pain. Individual questionnaire scores were transformed and presented as z-scores. Higher z-scores represent higher scores for the questionnaire completed. The questionnaire z-score plot for each individual patient was grouped according to the identification of nociplastic pain affecting the patient. Data points = mean ± SEM. \*Indicates a significant difference p<0.05 in questionnaire z-score between patients with or without nociplastic pain.

**Abbreviations:** Dis., functional disability; SAD, separation anxiety disorder; GAD, generalized anxiety disorder; PD, panic disorder; SP, social phobia; OCD, obsessive-compulsive disorder; LM, low mood; Sleep, sleep quality; Neur., neuropathic component of pain; Catast., pain catastrophizing.



**Figure 5** Follow-up outcomes in children and adolescents seen at an interdisciplinary center for complex pain. **(A)** The proportion of patients reporting a meaningful outcome at the end of their treatment or upon transfer to another center are shown divided by identification of nociplastic pain. **(B)** No significant difference was observed between patients with and without nociplastic pain who completed treatment in regard to the number of days between their initial visit and their end date when controlling for their age at their initial visit. Bars = mean  $\pm$  SEM. **(C)** No significant difference was observed between patients with and without nociplastic pain who were transferred in regard to the number of days between their initial visit and their transfer date when controlling for their age at their initial visit. Bars = mean  $\pm$  SEM.

**Abbreviation:** Tx, treatment.

between patients with possible nociplastic pain and those with non-nociplastic pain in regard to psychosocial factors, its effect size was small in magnitude probably because of the large sample size that was analyzed in the current study. We have previously identified distinct psychosocial profiles among a large sample of pediatric chronic musculoskeletal pain patients: one with high levels of distress and disability, another with relatively low scores of distress and disability, and a third group in between the other two on these measures.<sup>12</sup> Therefore, the current criteria for nociplastic pain which includes comorbidities to make the “diagnostic probable” may not discriminate patients who may require early psychological or psychiatric interventions to reduce pain symptoms and its negative impact on the daily lives of the patients.

The lack of association between the planned treatment and the identification of nociplastic pain can be attributed to the patients included in our study receiving a multimodal interdisciplinary treatment program. However, even if our team personalized the therapeutic approaches addressing distinct pain mechanisms, more patients with non-nociplastic pain report a meaningful outcome than patients with nociplastic pain. Recently, Ferro Moura Franco et al<sup>39</sup> conducted a systematic review on the prescription of physical exercises for patients with chronic pain along the nociplastic spectrum, and observed that global exercises should be emphasized for patients with nociplastic pain, while specific exercises should be emphasized for patients with non-nociplastic pain. Future research should evaluate the effects of targeting nociplastic pain mechanisms to optimize the personalized treatment programs in pediatric populations. Moreover, the addition of confirmatory tests and biomarkers may be important further investigate pediatric patients with nociplastic pain.<sup>40</sup>

The main strength of our study is that we provide a comprehensive description of the characteristics of pediatric patients with nociplastic pain using the clinical data collected during the daily activities of an interdisciplinary center for complex pain. We also phenotyped the patient’s somatosensory profile (sensory loss, mechanical hyperalgesia, thermal hyperalgesia or normative QST)<sup>32,33</sup> and described their psychosocial characteristics from self-report validated questionnaires. We also used meaningful clinical outcomes to describe the changes in the health condition of pediatric patients with nociplastic pain. In other words, our study may help to make pediatric nociplastic pain matter, be better understood, be more visible and eventually be better treated.<sup>41</sup>

**Table 3** Follow-Up Outcome Measures of Patient Sample with or Without Nociplastic Pain

Variable	Completed Treatment		Test Statistic ( $\chi^2$ )	p-value	Transferred		Test Statistic ( $\chi^2$ )	p-value
	Nociplastic Pain (n = 61)	Not Nociplastic Pain (n = 88)			Nociplastic Pain (n = 39)	Not Nociplastic Pain (n = 46)		
Planned medical treatment, n (%)	53 (86.89)	69 (78.41)	1.22	0.269	33 (84.62)	34 (73.91)	0.88	0.349
Planned physiotherapy treatment, n (%)	51 (83.61)	66 (75.00)	1.11	0.291	33 (84.62)	41 (89.13)	0.09	0.769
Planned psychology treatment, n (%)	32 (52.46)	39 (44.32)	0.66	0.417	27 (69.23)	29 (63.04)	0.14	0.711
Planned nursing treatment, n (%)	14 (22.95)	21 (23.86)	0.00	1.000	7 (17.95)	14 (30.43)	1.16	0.281
Planned social worker treatment, n (%)	5 (8.20)	9 (10.23)	0.02	0.895	4 (10.26)	4 (8.70)	0.00	1.000
Planned interventional treatment, n (%)	21 (34.43)	31 (35.23)	0.00	1.000	14 (35.90)	17 (36.96)	0.00	1.000
Planned other treatment, n (%)	4 (6.56)	0	3.69	0.055	0	5 (10.87)	2.75	0.097

Our study has several limitations. Data were retrospectively obtained from a sample of patients from a single center with diverse pathological diagnoses that were determined in parallel with the QST assessment leading to some missing data to understand intergroup differences and creating some bias. However, the large heterogeneous sample size promotes the external validity of our findings to clinicians caring for children and adolescents with a diversity of chronic pain clinical presentations with the potential for reproducibility. The QST protocol measures have similarities to established protocols in the literature<sup>20</sup> with modifications or exclusions. However, these modifications were made to fit within the time constraints of clinical routines. Somatosensory profiles determined to stratify patients with nociplastic pain are parallel to, but do not mirror adult mechanism-related profiles.<sup>33</sup> The pharmacological and non-pharmacological treatments prior to the initial evaluation were not controlled for patients with and without nociplastic pain. However, the assessment conducted allows for it to be adapted and evaluated for application in similar clinical settings for replication.

## Conclusion

In conclusion, our results provide evidence that patients who meet the criteria for nociplastic pain can be identified in a population of children and adolescents with chronic pain. The combination of screening patients with self-reported questionnaires and quantitative sensory testing facilitates identifying patients with chronic nociplastic pain with distinct characteristics and outcomes.

## Acknowledgments

The Edwards Family Interdisciplinary Centre for Pediatric Complex Pain is partially funded by the Louise and Allan Edwards Foundation. DDO was supported by the Edwards PhD Studentship in Pain Research provided by the Louise and Allan Edwards Foundation. The authors would like to thank the patients and all the clinical staff of the Edwards Family Interdisciplinary Centre for Pediatric Complex Pain of the Montreal Children's Hospital for their precious collaboration.

## Disclosure

Dr Jean A. Ouellet reports grants from AO Foundation, outside the submitted work. The authors report no conflicts of interest in this work.

## References

1. King S, Chambers CT, Huguete A, et al. The epidemiology of chronic pain in children and adolescents revisited: a systematic review. *Pain*. 2011;152(12):2729–2738. doi:10.1016/j.pain.2011.07.016
2. Kosek E, Cohen M, Baron R, et al. Do we need a third mechanistic descriptor for chronic pain states? *Pain*. 2016;157(7):1382–1386. doi:10.1097/j.pain.0000000000000507
3. Maier C, Baron R, Tolle TR, et al. Quantitative sensory testing in the German research network on neuropathic pain (DFNS): somatosensory abnormalities in 1236 patients with different neuropathic pain syndromes. *Pain*. 2010;150(3):439–450. doi:10.1016/j.pain.2010.05.002
4. Zafereo J, Wang-Price S, Kandil E. Quantitative sensory testing discriminates central sensitization inventory scores in participants with chronic musculoskeletal pain: an exploratory study. *Pain Pract*. 2021;21(5):547–556. doi:10.1111/papr.12990
5. Kosek E, Clauw D, Nijs J, et al. Chronic nociplastic pain affecting the musculoskeletal system: clinical criteria and grading system. *Pain*. 2021;162(11):2629–2634. doi:10.1097/j.pain.0000000000002324
6. Coles ML, Weissmann R, Uziel Y. Juvenile primary Fibromyalgia syndrome: epidemiology, etiology, pathogenesis, clinical manifestations and diagnosis. *Pediatr Rheumatol Online J*. 2021;19(1):22. doi:10.1186/s12969-021-00493-6
7. Verriotes M, Peters J, Sorger C, Walker SM. Phenotyping peripheral neuropathic pain in male and female adolescents: pain descriptors, somatosensory profiles, conditioned pain modulation, and child-parent reported disability. *Pain*. 2021;162(6):1732–1748. doi:10.1097/j.pain.0000000000002172
8. Walker LS, Sherman AL, Bruehl S, Garber J, Smith CA. Functional abdominal pain patient subtypes in childhood predict functional gastrointestinal disorders with chronic pain and psychiatric comorbidities in adolescence and adulthood. *Pain*. 2012;153(9):1798–1806. doi:10.1016/j.pain.2012.03.026
9. Palermo TM, Walco GA, Paladhi UR, et al. Core outcome set for pediatric chronic pain clinical trials: results from a Delphi poll and consensus meeting. *PAIN*. 2021;162(10):2539–2547. doi:10.1097/j.pain.0000000000002241
10. McGrath PJ, Walco GA, Turk DC, et al. Core outcome domains and measures for pediatric acute and chronic/recurrent pain clinical trials: pedIMMPACT recommendations. *J Pain*. 2008;9(9):771–783. doi:10.1016/j.jpain.2008.04.007
11. Fitzcharles MA, Cohen SP, Clauw DJ, Littlejohn G, Usui C, Hauser W. Nociplastic pain: towards an understanding of prevalent pain conditions. *Lancet*. 2021;397(10289):2098–2110.
12. Ocay DD, Larche CL, Betinjane N, et al. Phenotyping chronic musculoskeletal pain in male and female adolescents: psychosocial profiles, somatosensory profiles and pain modulatory profiles. *J Pain Res*. 2022;15:591–612. doi:10.2147/jpr.S352607
13. Bruneau A, Ferland CE, Pérez-Medina-Carballo R, et al. Association between the use of quantitative sensory testing and conditioned pain modulation and the prescription of medication and interventional procedures in children with chronic pain conditions. *Children*. 2022;9(8):1157. doi:10.3390/children9081157
14. Bruneau A, Carrié S, Moscaritolo L, Ingelmo P. Mechanism-based pharmacological treatment for chronic non-cancer pain in adolescents: current approaches and future directions. *Paediatr Drugs*. 2022;24(6):573–583. doi:10.1007/s40272-022-00534-x
15. Vega E, Rivera G, Echevarria GC, Prylutsky Z, Perez J, Ingelmo P. Interventional procedures in children and adolescents with chronic non-cancer pain as part of a multidisciplinary pain treatment program. *Paediatr Anaesth*. 2018;28(11):999–1006. doi:10.1111/pan.13494
16. Vega E, Beaulieu Y, Gauvin R, et al. Chronic non-cancer pain in children: we have a problem, but also solutions. *Minerva Anesthesiol*. 2018;84(9):1081–1092. doi:10.23736/s0375-9393.18.12367-4
17. Eccleston C, Fisher E, Cooper TE, et al. Pharmacological interventions for chronic pain in children: an overview of systematic reviews. *Pain*. 2019;160(8):1698–1707. doi:10.1097/j.pain.0000000000001609
18. Fisher E, Villanueva G, Henschke N, et al. Efficacy and safety of pharmacological, physical, and psychological interventions for the management of chronic pain in children: a WHO systematic review and meta-analysis. *Pain*. 2022;163(1):e1–e19. doi:10.1097/j.pain.0000000000002297
19. Ferland CE, Villemure C, Michon PE, et al. Multi-center assessment of quantitative sensory testing (qst) for the detection of neuropathic-like pain responses using the topical capsaicin model. *Can J Pain*. 2018;2:266–279. doi:10.1080/24740527.2018.1525682
20. Blankenburg M, Boekens H, Hechler T, et al. Reference values for quantitative sensory testing in children and adolescents: developmental and gender differences of somatosensory perception. *Pain*. 2010;149(1):76–88. doi:10.1016/j.pain.2010.01.011
21. Tousignant-Laflamme Y, Page S, Goffaux P, Marchand S. An experimental model to measure excitatory and inhibitory pain mechanisms in humans. *Brain Res*. 2008;1230:73–79. doi:10.1016/j.brainres.2008.06.120
22. Walker LS, Greene JW. The functional disability inventory: measuring a neglected dimension of child health status. *J Pediatr Psychol*. 1991;16(1):39–58. doi:10.1093/jpepsy/16.1.39
23. Chorpita BF, Yim L, Moffitt C, Umemoto LA, Francis SE. Assessment of symptoms of DSM-IV anxiety and depression in children: a revised child anxiety and depression scale. *Behav Res Ther*. 2000;38(8):835–855. doi:10.1016/S0005-7967(99)00130-8
24. Buysse DJ, Reynolds CF 3rd, Monk TH, Berman SR, Kupfer DJ. The Pittsburgh sleep quality index: a new instrument for psychiatric practice and research. *Psychiatry Res*. 1989;28(2):193–213. doi:10.1016/0165-1781(89)90047-4
25. Bouhassira D, Attal N, Alchaar H, et al. Comparison of pain syndromes associated with nervous or somatic lesions and development of a new neuropathic pain diagnostic questionnaire (DN4). *Pain*. 2005;114(1–2):29–36. doi:10.1016/j.pain.2004.12.010
26. Crombez G, Bijttebier P, Eccleston C, et al. The child version of the pain catastrophizing scale (PCS-C): a preliminary validation. *Pain*. 2003;104(3):639–646. doi:10.1016/S0304-3959(03)00121-0
27. Williams AR, Piamjariyakul U, Williams PD, Bruggeman SK, Cabanela RL. Validity of the revised impact on family (IOF) scale. *J Pediatr*. 2006;149(2):257–261. doi:10.1016/j.jpeds.2006.04.003
28. Stein RE, Riessman CK. The development of an impact-on-family scale: preliminary findings. *Med Care*. 1980;18(4):465–472. doi:10.1097/00005650-198004000-00010
29. Goubert L, Eccleston C, Vervoort T, Jordan A, Crombez G. Parental catastrophizing about their child's pain. The parent version of the Pain Catastrophizing Scale (PCS-P): a preliminary validation. *Pain*. 2006;123(3):254–263. doi:10.1016/j.pain.2006.02.035
30. Farrar JT, Young JP Jr., LaMoreaux L, Werth JL, Poole RM. Clinical importance of changes in chronic pain intensity measured on an 11-point numerical pain rating scale. *Pain*. 2001;94(2):149–158. doi:10.1016/s0304-3959(01)00349-9

31. Dworkin RH, Turk DC, Wyrwich KW, et al. Interpreting the clinical importance of treatment outcomes in chronic pain clinical trials: IMMPACT recommendations. *J Pain*. 2008;9(2):105–121. doi:10.1016/j.jpain.2007.09.005
32. Vollert J, Maier C, Attal N, et al. Stratifying patients with peripheral neuropathic pain based on sensory profiles: algorithm and sample size recommendations. *Pain*. 2017;158(8):1446–1455. doi:10.1097/j.pain.0000000000000935
33. Baron R, Maier C, Attal N, et al. Peripheral neuropathic pain: a mechanism-related organizing principle based on sensory profiles. *Pain*. 2017;158(2):261–272. doi:10.1097/j.pain.0000000000000753
34. De Blasiis P, de Sena G, Signoriello E, Sirico F, Imamura M, Lus G. Nociceptive pain in multiple sclerosis spasticity: dermatomal evaluation, treatment with intradermal saline injection and outcomes assessed by 3D gait analysis: review and a case report. *Int J Environ Res Public Health*. 2022;19(13):7872. doi:10.3390/ijerph19137872
35. Miyamoto S, Iida S, Miyashita T, et al. Mechanism of chronic pain of symptomatic hip osteoarthritis by association of its distribution, nociceptive, neuropathic, nociceptive, or mixed-pain screening, and the prevalence of lumbar spinal stenosis: a cross-sectional study. *Clin J Pain*. 2021;38(2):77–87. doi:10.1097/ajp.0000000000001004
36. Kaplan CM, Schrepf A, Mawla I, et al. Neurobiological antecedents of multisite pain in children. *Pain*. 2022;163(4):e596–e603. doi:10.1097/j.pain.0000000000002431
37. Foxen-Craft E, Bourcstein E, Kaplan C, Clauw DJ, Scott E. Pain widespreadness, and not primary pain location, is associated with comorbid symptoms in children with chronic pain. *Clin J Pain*. 2023;39(1):1–7. doi:10.1097/ajp.0000000000001083
38. Levy RL. Exploring the intergenerational transmission of illness behavior: from observations to experimental intervention. *Ann Behav Med*. 2011;41(2):174–182. doi:10.1007/s12160-010-9254-9
39. Ferro Moura Franco K, Lenoir D, Dos Santos Franco YR, Jandre Reis FJ, Nunes Cabral CM, Meeus M. Prescription of exercises for the treatment of chronic pain along the continuum of nociceptive pain: a systematic review with meta-analysis. *Eur J Pain*. 2021;25(1):51–70. doi:10.1002/ejp.1666
40. Larkin TE, Kaplan CM, Schrepf A, et al. Altered network architecture of functional brain communities in chronic nociceptive pain. *NeuroImage*. 2021;226:117504. doi:10.1016/j.neuroimage.2020.117504
41. Eccleston C, Fisher E, Howard RF, et al. Delivering transformative action in paediatric pain: a lancet child & adolescent health commission. *Lancet Child Adolesc Health*. 2021;5(1):47–87. doi:10.1016/S2352-4642(20)30277-7

Journal of Pain Research

Dovepress

## Publish your work in this journal

The Journal of Pain Research is an international, peer reviewed, open access, online journal that welcomes laboratory and clinical findings in the fields of pain research and the prevention and management of pain. Original research, reviews, symposium reports, hypothesis formation and commentaries are all considered for publication. The manuscript management system is completely online and includes a very quick and fair peer-review system, which is all easy to use. Visit <http://www.dovepress.com/testimonials.php> to read real quotes from published authors.

Submit your manuscript here: <https://www.dovepress.com/journal-of-pain-research-journal>