

RESEARCH ARTICLE

Occurrence and characterization of methicillin-resistant *Staphylococcus* spp. in diseased dogs in Brazil

Flávia Mello Viegas¹ , Jordana Almeida Santana¹ , Brendhal Almeida Silva¹ , Rafael Gariglio Clark Xavier¹ , Cláudia Teixeira Bonisson² , Júlia Lara Sette Câmara¹ , Mário Cesar Rennó² , João Luis Reis Cunha³ , Henrique César Pereira Figueiredo¹ , Francisco Carlos Faria Lobato¹ , Rodrigo Otávio Silveira Silva¹ *

1 Veterinary School, Federal University of Minas Gerais, Belo Horizonte, Minas Gerais, Brazil, **2** VetMaster Veterinary Clinic, Belo Horizonte, Minas Gerais, Brazil, **3** Department of Biology, University of York, Heslington, York, United Kingdom

 These authors contributed equally to this work.

* rodrigo.otaviosilva@gmail.com


 OPEN ACCESS

Citation: Viegas FM, Santana JA, Silva BA, Xavier RGC, Bonisson CT, Câmara JLS, et al. (2022) Occurrence and characterization of methicillin-resistant *Staphylococcus* spp. in diseased dogs in Brazil. PLoS ONE 17(6): e0269422. <https://doi.org/10.1371/journal.pone.0269422>

Editor: Jose Melo-Cristino, Universidade de Lisboa Faculdade de Medicina, PORTUGAL

Received: January 24, 2022

Accepted: May 20, 2022

Published: June 3, 2022

Copyright: © 2022 Viegas et al. This is an open access article distributed under the terms of the [Creative Commons Attribution License](https://creativecommons.org/licenses/by/4.0/), which permits unrestricted use, distribution, and reproduction in any medium, provided the original author and source are credited.

Data Availability Statement: All relevant data are within the paper and its [Supporting Information](#) files.

Funding: This work was supported by funds from Coordination for the Improvement of Higher Education Personnel (CAPES – Prêmio CAPES 2015 - 0774/2017), National Council for Scientific and Technological Development (CNPq - 406402/2018-3), Fundação de Amparo à Pesquisa do Estado de Minas Gerais (FAPEMIG - APQ-00524-17) and Pró-Reitoria de Pesquisa da Universidade

Abstract

Staphylococcus pseudintermedius is a major commensal bacterium of the skin and mucosae of dogs and an opportunistic agent responsible for several clinical infections, such as pyoderma, otitis, and surgical wound infections. The emergence of methicillin-resistant *S. pseudintermedius* (MRSP) has become a problem of great concern in veterinary and human medicine because it is multidrug resistant (MDR) and can also infect humans. This study aimed to identify the occurrence of *Staphylococcus* spp. in infected patients and investigate the antimicrobial resistance profiles and molecular structure of MRSP isolates. Samples were obtained from two different veterinary clinics; suggestive colonies were submitted to matrix-assisted laser desorption ionization-time of flight (MALDI-ToF) mass spectrometry and confirmed at the species level by polymerase chain reaction (PCR). Sequencing of the *16S rRNA* and *rpoB* genes were used in selected samples that were not identified by MALDI-ToF and by the species-specific PCR. Antimicrobial susceptibility and PCR detection of *mecA* were performed. MRSP isolates were subjected to multilocus sequence typing. Of all the clinical staphylococci ($n = 131$), 98 (74.8%) were identified as *S. pseudintermedius*. Multidrug resistance (resistance to ≥ 3 classes of antimicrobials) was observed in 63.2% of *S. pseudintermedius* isolates, and 24.5% of *S. pseudintermedius* isolates were methicillin-resistant. Half of the MRSP isolates were isolated from surgical site infections. Among the ten sequence types (ST) identified, nine were novel. ST71 was the most prevalent and associated with resistance to fluoroquinolones. Prior antimicrobial therapy, hospitalization, and surgical site infections seemed to be risk factors for MRSP acquisition. The present study showed a high rate of MDR staphylococci in infected dogs. MRSP was isolated from different clinical conditions, mainly surgical site infections. Additionally, this is the first study to extensively investigate the population structure of MRSP in Brazil, which revealed the dispersion of CC71 and nine novel ST. These findings raise concerns for both animal and human health due to the zoonotic potential of this species and limited therapeutic options available for MRSP infections.

Federal de Minas Gerais. ROSS has a fellowship from CNPq (Brazil). The funders had no role in study design, data collection and analysis, decision to publish, or preparation of the manuscript.

Competing interests: The authors have declared that no competing interests exist.

Introduction

Staphylococcus pseudintermedius is a major commensal agent of the skin and mucosae of dogs and integrates the *S. intermedius* group (SIG) along with three other species: *S. intermedius*, *S. delphini* and *S. cornubiensis* [1, 2]. Although it is commonly found in the nose and anus of healthy individuals, *S. pseudintermedius* can be responsible for several clinical infections, being one of the leading causes of pyoderma, but it is also a common cause of otitis, wound infections, and urinary tract infections [1, 3–5].

Over the past decade, the emergence of methicillin-resistant *S. pseudintermedius* (MRSP) has become a problem of great concern in veterinary medicine [4, 6, 7] due to the acquisition of the Staphylococcal Cassette Chromosome *mec* (SCC*mec*), a mobile genetic element which harbors the *mecA* gene and confers resistance to all beta-lactam antimicrobials, except for the fifth-generation cephalosporins ceftaroline and ceftobiprole [8]. MRSP strains are also commonly resistant to other antimicrobial classes, such as aminoglycosides, macrolides, and fluoroquinolones, representing a challenge to therapeutic approaches [4, 9–11]. Furthermore, SCC*mec* and/or other antimicrobial resistance genes can be transferred between different staphylococci, which can lead to serious public health issues, especially when involving MRSP and methicillin-resistant *S. aureus* (MRSA) [9, 12, 13]. Similar to MRSP in dogs, MRSA is a major pathogen associated with both hospital and community-acquired infections in humans and is responsible for severe cases of soft tissue infections [11, 12].

Reports of human cases of carriage or infection by *S. pseudintermedius* have been scarcely described over the last few years [9, 14]. *S. pseudintermedius* can cause a range of skin and soft tissue infections in humans, and studies have shown high similarity among strains isolated from human patients and their dogs [15–19]. Furthermore, it seems like long-term contact with dogs may be a risk factor for acquiring the bacterium, with veterinarians and pet owners being the most affected [9, 14, 20, 21]. In this context, MRSP is a relevant one health problem because of its potential zoonotic risk and the limited options of treatment currently available.

In addition to its growing importance, there are few studies on MRSP in Brazil. To date, there is almost no information about its population structure and resistance patterns [22–25]. Furthermore, few studies have investigated the possible relationship between different clinical manifestations caused by *S. pseudintermedius* in dogs and their patterns of antimicrobial resistance (AMR) and genetic background. This study aimed to identify the occurrence of staphylococci, with major focus on *S. pseudintermedius*, in dogs with clinical conditions and investigate its epidemiology in Belo Horizonte, Minas Gerais, by reporting the antimicrobial resistance profiles and analyzing the molecular structure of MRSP isolates.

Materials and methods

Strain isolation and identification

Clinical specimens were obtained from dogs during consultation at the Veterinary Hospital of the Federal University of Minas Gerais (HV-UFMG) and in a veterinary clinic (VetMaster, Belo Horizonte, Minas Gerais) from 2017 to 2020. After informed consent of the owners, samples of dogs with suspected bacterial infection at any site were included in the present study. Patient information data, including reasons for consultation, age, sex, disease, specimen type, involvement of antimicrobial therapy at the time of sampling, and outcome, were collected. This study was approved by the Ethical Committee on Animal Use (CEUA) of the Federal University of Minas Gerais under protocol 287/2019.

All samples were plated on mannitol salt agar (Kasvi, Brazil) and incubated for 24 h at 37°C. Two presumptive colonies from each sample were plated on Müller Hinton agar (Difco,

USA) and identified by matrix-assisted laser desorption/ionization time-of-flight (MALDI-TOF) mass spectrometry, as described previously [26]. Briefly, for each strain, 1 μ l of formic acid (70%) and 1 μ l of MALDI-TOF MS matrix, consisting of a saturated solution of α -cyano-4-hydroxycinnamic acid (HCCA) (Bruker Daltonics, Bremen, Germany), were applied to the spot and allowed to air-dry. Spectra were acquired using the FlexControl MicroFlex LT mass spectrometer (Bruker Daltonics) with a 60-Hz nitrogen laser, in which up to 240 laser shots. Parameters for mass range detection were defined to allow the identification from 1,960 to 20,137 m/z, where Ion source 1 v was 19.99 kv, Ion source 2 voltage was 18.24 kv and the lens voltage was 6.0 kv for data acquisition. Prior to measurements, calibration was preceded with a bacterial test standard (*E. coli* DH5 alpha; Bruker Daltonics). The Real Time (RT) identification score criteria used were those recommended by the manufacturer: score ≥ 2.000 indicates a species-level identification. Isolates identified as SIG by MALDI-ToF were confirmed by multiplex polymerase chain reaction (PCR) of *nuc* gene [27]. SIG isolates that were not amplified by multiplex PCR, and non-SIG isolates with MALDI-ToF score under 2.000 were submitted to sequencing of the *16S rRNA* gene and sequencing of the *rpoB* gene, if necessary. Amplification and sequencing of the *16S rRNA* and *rpoB* genes were performed as previously described [28, 29].

Antimicrobial susceptibility testing

Antimicrobial susceptibility of all *Staphylococcus* spp. isolates was tested by the disk diffusion method and interpreted according to the Clinical and Laboratory Standards Institute (CLSI) documents, M100-Ed31 [30] and VET01S-Ed5 [31]. Strains were cultivated in Müller-Hinton agar and incubated overnight at 35° C. Inoculation was performed using cell suspensions of 0.5 McFarland turbidity standard and results were read within 18 to 24 hours. The following antimicrobials were tested: oxacillin (OXA, 1 μ g), cefoxitin (FOX, 30 μ g), penicillin (PEN, 10 IU), gentamicin (GEN, 10 μ g), erythromycin (ERY, 15 μ g), clindamycin (CLI, 2 μ g), tetracycline (TET, 30 μ g), ciprofloxacin (CIP, 5 μ g), nitrofurantoin (NIT, 300 μ g), trimethoprim-sulfamethoxazole (SXT, 1,25/23,75 μ g), chloramphenicol (CHL, 30 μ g), and rifampicin (RIF, 5 μ g) (Oxoid, USA). *Staphylococcus aureus* ATCC® 25923 was used as control. The results were recorded as susceptible, intermediate, or resistant by measuring the inhibition halo diameter according to the documents quoted above [30].

DNA extraction and detection of *mecA*

Extraction of bacterial genomic DNA with guanidium thiocyanate was performed according to a method previous described [32]. The extracted DNA was quantified using a Nanodrop spectrophotometer (Thermo Scientific, Wilmington, DE, USA). The purity of the extracted DNA was determined using the absorbance ratio at 260/280 nm. All staphylococci isolates were tested by PCR to determine whether they carry the *mecA* gene [33].

Multilocus sequence typing (MLST)

Multilocus sequence typing was performed for all MRSP isolates, according to literature [34, 35]. STs were determined using the *S. pseudintermedius* MLST database (<https://pubmlst.org/organisms/staphylococcus-pseudintermedius>), and new STs were assigned by the curator Vincent Perreten (vincent.perreten@vbi.unibe.ch). Phyloviz v 2.0, using the goeBURST algorithm [36, 37], was used to infer the population structure, with clonal complexes (CCs) composed of all strains sharing at least six identical alleles (single-locus variant). Multilocus sequence analysis (MLSA) was performed based on concatenated sequences of the seven alleles from the MLST scheme. A phylogenetic tree was constructed using the approximately-maximum-

likelihood (ML) model and Hasegawa-Kishino-Yano models of nucleotide evolution was constructed using IQ-TREE [38], with a bootstrap analysis with 1000 replicates, and visualized and annotated using iTol v.4 [39].

Statistical analysis

Data were summarized using frequency tables and percentages for categorical variables and medians for continuous variables. To measure the association between the categorical variables and isolated strains, a univariate analysis using Fisher's exact test was performed. The associations were expressed as odds ratios (ORs) and their 95% confidence intervals (CIs). Statistical significance was set at $P \leq 0.05$. For quantitative variables, the Mann-Whitney test was used, with a p value ≤ 0.05 , and Tukey's comparison test was applied if statistical significance was observed. All analyses were performed using R Software 4.0.9 (R Development Core Team, NZ).

Results

Data collection

One hundred and sixteen dogs were included in this study, which provided 131 samples of staphylococcal species. When two isolates from the same animal were obtained from the same site and had the same antimicrobial resistance profile, only one of them was maintained in the study. Most of the isolates (95/131–72.5%) were obtained from HV-UFGM, while 27.5% (36/131) samples from 27 animals were obtained in a private clinic. The animals belonged to different breeds and ages ranging from 12 to 204 months, with a mean of 88 months (± 46.3). Fifty-seven animals were female, fifty-eight were male, and one was not provided with gender information (see [S1 File](#)). At least 64 animals (55.2%) had previous use of antimicrobials, 56 received different systemic antibiotics, eight of them had used only topical antibiotics, and 15 of them used both systemic and topical products. The main prescribed antibiotics were cefalexin (29/64), amoxicillin (9/64), or a combination of amoxicillin and clavulanic acid (16/64) and enrofloxacin (11/64). Most of the clinical specimens were associated with dermatological conditions: 58 (44.3%) with pyoderma, 28 (21.4%) with otitis, 20 (15.3%) with urogenital tract infections, 15 (11.4%) with surgical site infections (SSIs), and 10 (7.6%) from other sites.

Strain isolation and identification

A total of 131 samples were obtained and confirmed to be *Staphylococcus* spp. by MALDI-ToF. A total of 102 isolates (77.9%) were identified by MALDI-TOF as part of the SIG ([Table 1](#)). Among these, PCR of the *nuc* gene confirmed 98 (96.1%) isolates as *S. pseudintermedius* and four (3.9%) as *S. delphini*. Sequencing of the *16S rRNA* gene confirmed all species, except in one case. The only sample sent for sequencing of the *rpoB* gene was identified as *S. delphini*, confirming the MALDI-ToF results. The most frequent species isolated was *S. pseudintermedius* (98/131, 74.8%), followed by *S. schleiferi* (20/131, 15.3%) (see [Fig 1](#)), although it is important to state that the possible differentiation of *S. schleiferi* into two species, *S. coagulans* and *S. schleiferi* [40], was not investigated. Nine animals had both pyoderma and otitis at time of sampling—two of them caused by *S. pseudintermedius* and two caused by *S. schleiferi*; in all those cases, isolates from the same animal showed the same antimicrobial resistance profile. The other five animals had otitis and pyoderma caused by different species, more specifically a combination of *S. pseudintermedius* and *S. schleiferi* in four of them and the other one with a combination of *S. pseudintermedius* and *S. delphini*. Two dogs with pyoderma carried methicillin-susceptible *S. pseudintermedius* (MSSP) with different patterns of antimicrobial resistance, one carried both MSSP and MRSP and two carried *S. pseudintermedius* and *S. aureus*.

Table 1. Distribution and proportion of staphylococci species isolated from different sites of sampling from 116 dogs at two different veterinary clinics from Belo Horizonte, Brazil, between 2017 and 2020.

Infection site	Species
Skin (n = 58–44.3%)	<i>S. pseudintermedius</i> (n = 45)
	<i>S. delphini</i> (n = 1)
	* <i>S. schleiferi</i> (n = 10)
	<i>S. aureus</i> (n = 2)
Ear (n = 28–21.4%)	<i>S. pseudintermedius</i> (n = 17)
	<i>S. delphini</i> (n = 1)
	* <i>S. schleiferi</i> (n = 10)
Urogenital tract (n = 20–15.3%)	<i>S. pseudintermedius</i> (n = 14)
	<i>S. delphini</i> (n = 2)
	<i>S. aureus</i> (n = 1)
	<i>S. capitis</i> (n = 1)
	<i>S. epidermidis</i> (n = 1)
	<i>S. warneri</i> (n = 1)
Surgical wound (n = 15–11.4%)	<i>S. pseudintermedius</i> (n = 13)
	<i>S. simulans</i> (n = 1)
	<i>S. capitis</i> (n = 1)
Others (n = 10–7.6%)	<i>S. pseudintermedius</i> (n = 9)
	<i>S. simulans</i> (n = 1)

* The recently approved differentiation of *S. schleiferi* into two species (*S. coagulans* and *S. schleiferi*) was not considered in the present work.

<https://doi.org/10.1371/journal.pone.0269422.t001>

Antimicrobial susceptibility

Results of antimicrobial resistance to all staphylococci species are shown in Table 2. A total of 88.2% (90/102) isolates from the SIG were resistant to at least one antibiotic. About 86.7% (85/98) of *S. pseudintermedius* were resistant to penicillin and 24.5% (24/98) were resistant to oxacillin. In sequence, 59.2% (58/98) isolates were resistant to trimethoprim/sulfamethoxazole, 58.2% (57/98) were resistant to tetracycline and 42.9% (42/98) were resistant to clindamycin and erythromycin. All isolates were susceptible to nitrofurantoin. Isolates from SSIs had the highest rates of resistance to nine of the tested antibiotics ($p < 0.05$; Fig 2). Sixty-two isolates (63.3%) were considered multidrug resistant (MDR). Of these, 43.5% (27/62) were isolated from pyoderma, 21% (13/62) from SSIs, 14.5% (9/62) from otitis, 11.3% (7/62) from urogenital infections, and 9.7% (6/62) from other sites. Only one *S. delphini* showed antimicrobial resistance, being resistant to penicillin and tetracycline.

Among the 29 non-SIG isolates, 18 (62.1%) were susceptible to all antimicrobials. Nine isolates (31%) were resistant to penicillin, which was the highest rate of resistance observed among these strains. Two isolates (6.9% - 2/29) were resistant to GEN and two isolates resistant to PEN were also resistant to ERY (3.4% - 1/29) or TET (3.4% - 1/29). One isolate (3.4% - 1/29) was resistant to FOX, PEN, CLI and SXT and positive for the *mecA*, thus being the only isolate considered multidrug resistant.

S. pseudintermedius was significantly associated with resistance to RIF (OR 5.82, 95%CI), CIP (OR 5.83, 95%CI), CLI (OR 7.82, 95%CI), ERY (OR 7.82, 95%CI), PEN (OR 10.11, 95%CI), OXA (OR 13.11, 95%CI), SXT (OR 14.73, 95%CI), and TET (OR 14.73, 95%CI). *S. pseudintermedius* strains were also associated with MDR (OR 18.6, 95%CI 5.3–65.1) when compared to other staphylococci.

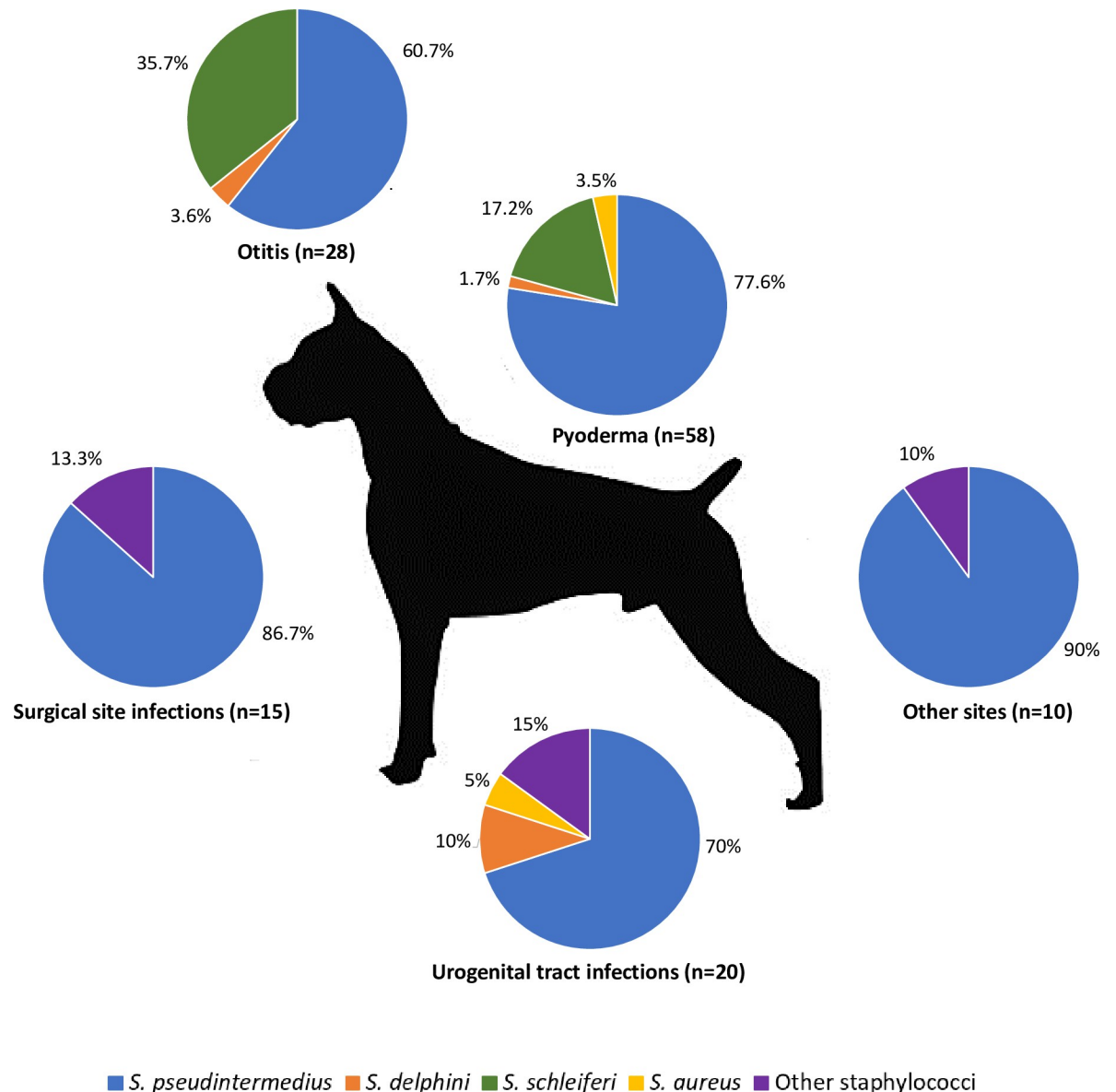


Fig 1. Distribution and proportion of staphylococci from different sites of sampling from 116 dogs attended at two different veterinary clinics from Belo Horizonte, Brazil, between 2017 and 2020. Disclosure—The recently approved differentiation of *S. schleiferi* into two species, *S. coagulans* and *S. schleiferi* [40], was not considered in the present work.

<https://doi.org/10.1371/journal.pone.0269422.g001>

Methicillin-resistant staphylococci

Approximately 23.5% (24/102) of SIG isolates were positive for the *mecA* gene, all of them identified as *S. pseudintermedius*. Three (10.3%) of non-SIG isolates were also positive for *mecA*. Of these, two were *S. schleiferi* and one was *S. epidermidis*. However, only *S. epidermidis* was phenotypically resistant to oxacillin or ceftiofur (inhibition halo = 24mm for FOX); this strain was obtained from a dog with a nosocomial UTI. The two *S. schleiferi* positive for *mecA* were not resistant to oxacillin (inhibition halos for FOX 19 and 19,1mm). No MRSA isolates were identified in this study.

Table 2. Antimicrobial resistance among staphylococci isolates from infected dogs attended at two different veterinary clinics, from 2017 to 2020, in Belo Horizonte, Brazil.

Species	Isolates	OXA/ FOX	PEN	ERY	CLI	SXT	RIF	GEN	TET	CIP	CHL	NIT	MDR
<i>S. pseudintermedius</i>	98 (74.8%)	24 (18.3%)	85 (64.9%)	42 (32.1%)	42 (32.1%)	58 (44.3%)	35 (26.7%)	28 (21.4%)	57 (43.5%)	34 (26%)	8 (6.1%)	0 (0%)	62 (47.3%)
<i>S. delphini</i>	4 (3,1%)	0 (0%)	1 (0.8%)	0 (0%)	0 (0%)	0 (0%)	0 (0%)	0 (0%)	1 (0.8%)	0 (0%)	0 (0%)	0 (0%)	0 (0%)
<i>S. schleiferi</i> *	20 (15.3%)	0 (0%)	2 (1.5%)	0 (0%)	0 (0%)	0 (0%)	0 (0%)	2 (1.5%)	0 (0%)	0 (0%)	0 (0%)	0 (0%)	0 (0%)
<i>S. aureus</i>	3 (2.3%)	0 (0%)	2 (1.5%)	1 (0.8%)	0 (0%)	0 (0%)	0 (0%)	0 (0%)	1 (0.8%)	0 (0%)	0 (0%)	0 (0%)	0 (0%)
<i>S. capitis</i>	2 (1.5%)	0 (0%)	2 (1.5%)	0 (0%)	0 (0%)	0 (0%)	0 (0%)	0 (0%)	0 (0%)	0 (0%)	0 (0%)	0 (0%)	0 (0%)
<i>S. epidermidis</i>	1 (0.8%)	1 (0.8%)	1 (0.8%)	0 (0%)	1 (0.8%)	1 (0.8%)	0 (0%)	0 (0%)	0 (0%)	0 (0%)	0 (0%)	0 (0%)	1 (0.8%)
<i>S. simulans</i>	2 (1.5%)	0 (0%)	1 (0.8%)	0 (0%)	0 (0%)	0 (0%)	0 (0%)	0 (0%)	0 (0%)	0 (0%)	0 (0%)	0 (0%)	0 (0%)
<i>S. warneri</i>	1 (0.8%)	0 (0%)	1 (0.8%)	0 (0%)	0 (0%)	0 (0%)	0 (0%)	0 (0%)	0 (0%)	0 (0%)	0 (0%)	0 (0%)	0 (0%)
Total	131 (100%)	25 (19.1%)	95 (72.5%)	43 (32.8%)	43 (32.8%)	59 (45%)	35 (26.7%)	30 (22.9%)	59 (45%)	34 (26%)	8 (6.1%)	0 (0%)	63 (48.1%)

OXA = oxacillin, FOX = ceftiofuran, PEN = penicillin, ERY = erythromycin, CLI = clindamycin, SXT = thiomethoprim/sulfamethoxazole, RIF = rifampicin, GEN = gentamicin, TET = tetracycline, CIP = ciprofloxacin, CHL = chloramphenicol, NIT = nitrofurantoin, MDR = multidrug resistance

* The recently approved differentiation of *S. schleiferi* into two species (*S. coagulans* and *S. schleiferi*) was not considered in the present work.

<https://doi.org/10.1371/journal.pone.0269422.t002>

MRSP

Twenty-four isolates of *S. pseudintermedius* were resistant to oxacillin and positive for the *mecA* gene by PCR, thus being considered MRSP (Table 3). Of these, 50% (12/24) were from surgical wounds, 29.2% (7/24) from skin lesions, 12.5% (3/24) from otitis, and 8.3% (2/24) from other sites. When classified by the type of infection, rates of MRSP were 15.6% (7/45) in dogs with skin infections, 17.6% (3/17) in dogs with otitis, 92.3% (12/13) in dogs with SSIs, and 22.2% (2/9) in other sites. None of the MRSP strains were isolated from dogs with urinary tract infection (UTI). All isolates were resistant to at least three classes of non-beta-lactam antimicrobials. The most common antimicrobial resistance profiles were OXA-PEN-ERY--CLI-SXT-RIF-CIP-TET-GEN (16.7% - 4/24) and OXA-PEN-ERY-CLI-SXT-RIF-TET-GEN (16.7% - 4/24).

Ten different ST profiles were identified, including nine new STs (ST2124–ST2131 and ST2164) (Fig 3). In goeBURST analysis, ten isolates (ST71 and ST2130) belonged to well-known CC71 (Fig 4E); ST2124 was related to CC2166 (Fig 4B); STs 2125 and 2128 seemed to be related to CC781 (Fig 4D), while ST2127 was closer to CC558 –which has evolved from CC781 (Fig 4D); STs 2126 and 2131 were close to subfounder ST1709 (Fig 4D); and STs 2129 and 2164 were closer to CC1758 (Fig 4C). In the statistical analysis, CC71 was associated with resistance to ciprofloxacin ($p < 0.05$).

Predictors for MRSP

There was no significant difference in the proportion of MRSP isolates between female and male dogs or between age groups. However, previous antimicrobial treatment (OR9.21 95%CI 2.05–41.25) and hospital-acquired infections were associated with the isolation of MRSP strains. When considering the clinical condition presented by the animals, SSIs were

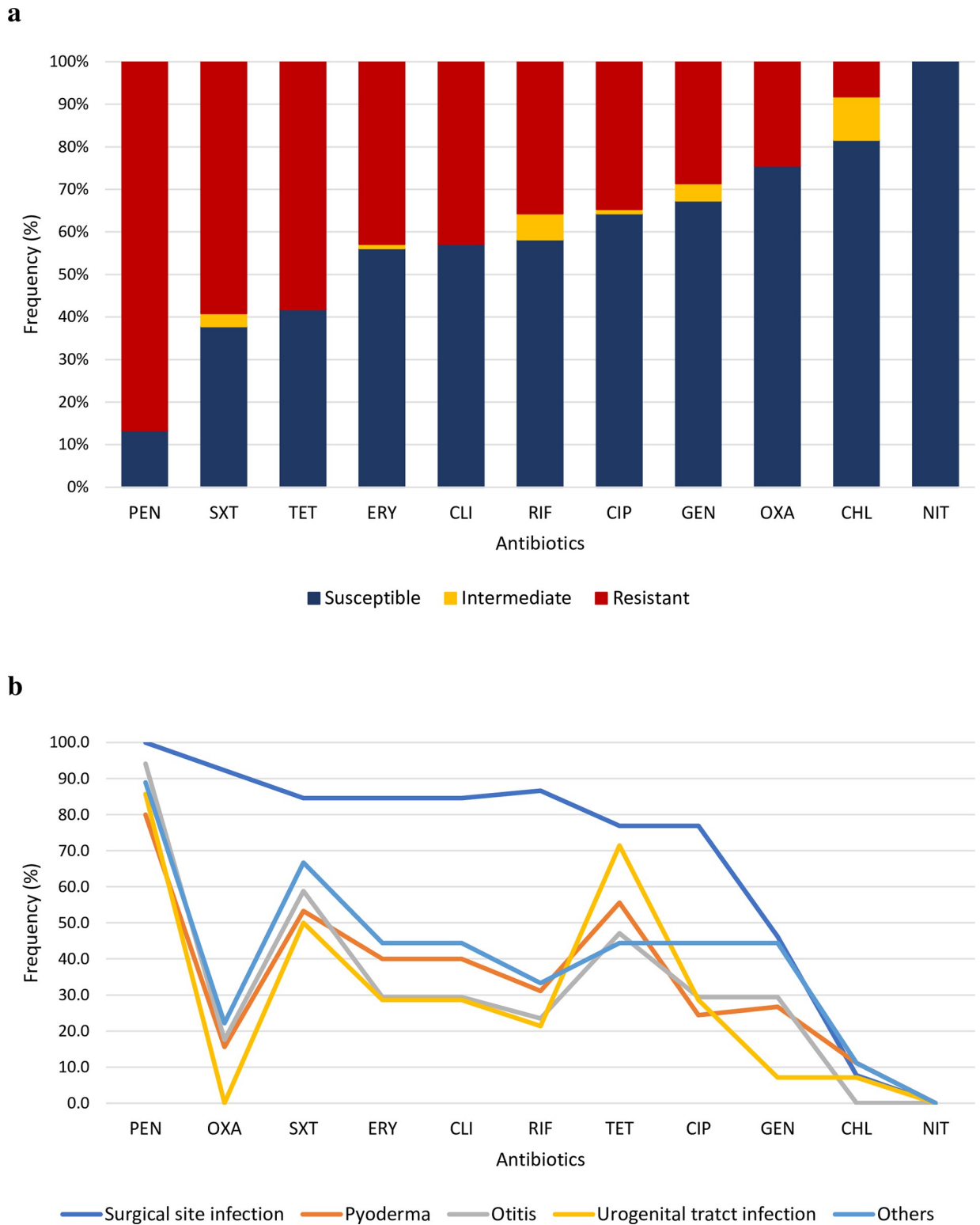


Fig 2. Antimicrobial resistance among clinical *S. pseudintermedius* isolates from infected dogs from two different veterinary clinics from 2017 to 2020 in Belo Horizonte, Brazil. a) Overall prevalence according to the antimicrobial compound; b) According to site of infection.

<https://doi.org/10.1371/journal.pone.0269422.g002>

Table 3. Antimicrobial resistance profile of methicillin-resistant *S. pseudintermedius* (MRSP) strains isolated from dogs (Belo Horizonte, Brazil) according to sequence types (STs) and infection sites.

ST	CC	Antimicrobial resistance profile	Infection site
71 (n = 9)	71	OXA, PEN, ERY, CLI, SXT, RIF, CIP, TET, GEN	Surgical wound (2)
			Skin (1)
		OXA, PEN, ERY, CLI, SXT, RIF, CIP, GEN	Surgical wound (1)
			Skin (1)
		Others (1)	
		OXA, PEN, ERY, CLI, SXT, RIF, CIP, TET	Surgical wound (3)
2124 (n = 2)	NA	OXA, PEN, ERY, CLI, SXT, CIP, GEN	Otitis (1)
		OXA, PEN, SXT, RIF, CIP, TET, GEN	Others (1)
2125 (n = 3)	NA	OXA, PEN, ERY, CLI, SXT, RIF, CIP, GEN	Surgical wound (1)
		OXA, PEN, ERY, CLI, SXT, CIP, GEN	Skin (1)
		OXA, PEN, ERY, CLI, SXT, CIP	Surgical wound (1)
2126 (n = 4)	NA	OXA, PEN, ERY, CLI, SXT, RIF, TET, GEN	Skin (2)
			Surgical wound (1)
			Otitis (1)
2127 (n = 1)	NA	OXA, PEN, SXT, RIF, TET	Skin (1)
2128 (n = 1)	NA	OXA, PEN, SXT, RIF, CIP, TET	Surgical wound (1)
2129 (n = 1)	NA	OXA, PEN, ERY, CLI, CHL, CIP, TET, GEN	Surgical wound (1)
2130 (n = 1)	71	OXA, PEN, ERY, CLI, SXT, RIF, CIP, TET, GEN	Otitis (1)
2131 (n = 1)	NA	OXA, PEN, ERY, CLI, SXT, RIF, TET	Surgical wound (1)
2164 (n = 1)	NA	OXA, PEN, ERY, CLI, SXT, RIF, CHL, CIP, TET, GEN	Skin (1)

*NA = not applicable.

<https://doi.org/10.1371/journal.pone.0269422.t003>

significantly associated with MRSP isolation: a dog with SSI was more likely to carry an MRSP strain than an MSSP strain (OR 3.7 95%CI 1.5–9.4). In addition, MRSP was more likely to be isolated from SSI than from pyoderma, otitis, urogenital infection, or other site infections ($p < 0.05$).

Discussion

In the present study, we characterized the occurrence of different species of *Staphylococcus* spp. isolated from several different tissues in dogs and evaluated their antibiotic resistance. *S. pseudintermedius* was the most prevalent species in this study. As it is the major causative agent of pyoderma in dogs, most clinical specimens were obtained from skin lesions [1, 41]. The second most frequently observed species was *S. schleiferi*, but it is important to remember that the recently approved differentiation of *S. schleiferi* into *S. coagulans* and *S. schleiferi* [40] was not considered in the present work. Anyway, *S. schleiferi* is rarely found in healthy carriers and is commonly isolated from dogs with otitis or pyoderma [11, 42, 43]. Some animals were infected by both MSSP and MRSP, or even by two different species of *Staphylococcus* spp., similar to previous reports [1, 11]. As these bacteria can share MGE, it is worrisome that strains previously susceptible could acquire resistance and/or virulence genes when in contact with virulent/resistant lineages [10, 12].

High rates of AMR were observed among the SIG isolates to most of the antimicrobials tested in this study. AMR is considered a natural phenomenon, but the excessive or inappropriate use of antimicrobial drugs in human and veterinary medicine accelerates its occurrence [44]. Over half of the animals included in the study had been previously treated with at least one systemic antibiotic, which can be linked to the high rates of AMR found. Unfortunately,

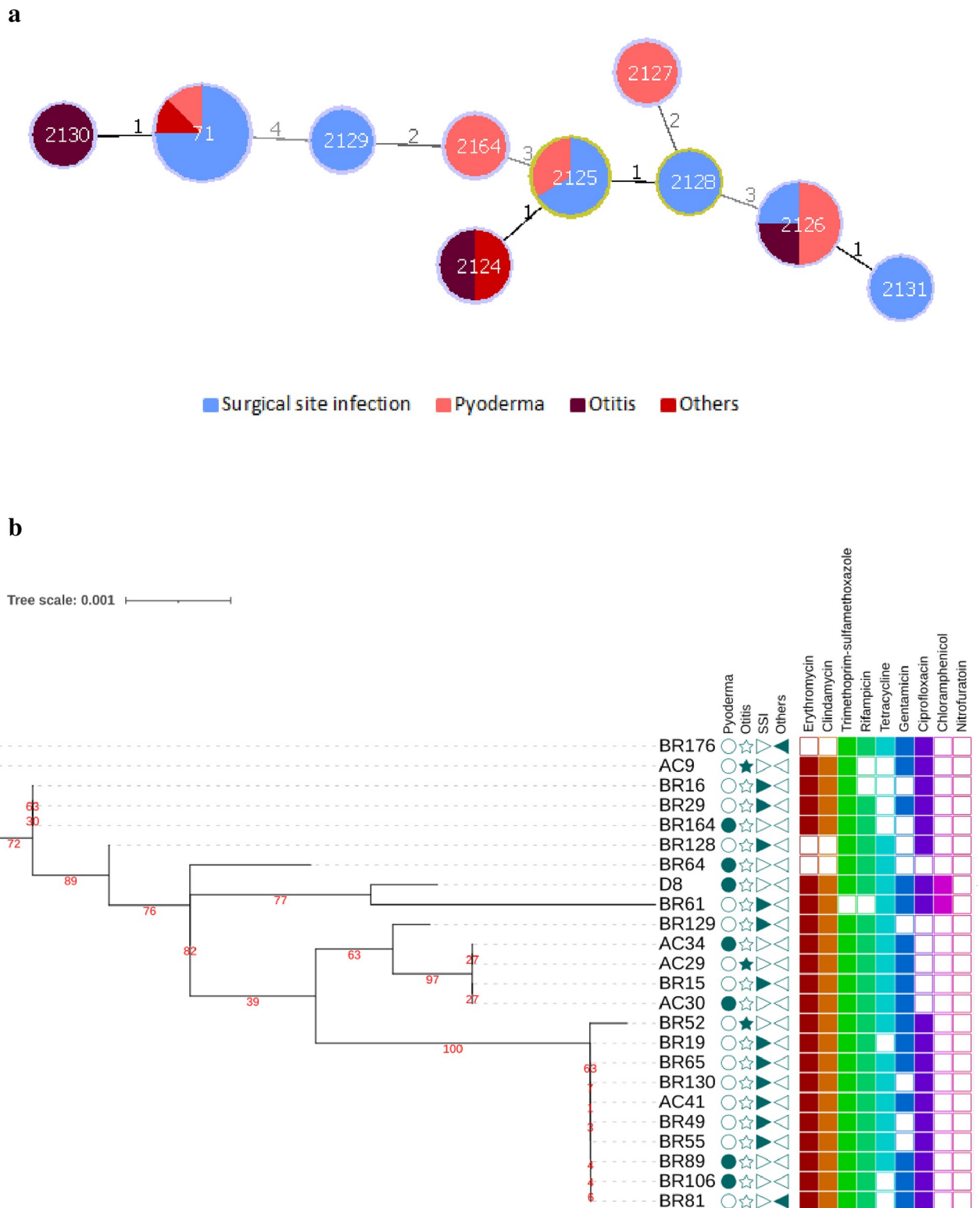


Fig 3. Genetic relationship of MRSP from dogs in Belo Horizonte (2017–2020). a) Population snapshot of MRSP goeBURST full MST analysis. Line numbers and shading indicate the number of differing loci between STs and colors indicate the type of infection related to each ST. b) A phylogenetic tree based on the alignment of all MLST genes of each ST was inferred using iqTree; posterior probabilities are shown in red. Columns with triangles, circle and star indicate the site of infection of each isolate; colored squares' columns indicate presence or absence of resistance to different classes of non-beta-lactams antibiotics.

<https://doi.org/10.1371/journal.pone.0269422.g003>

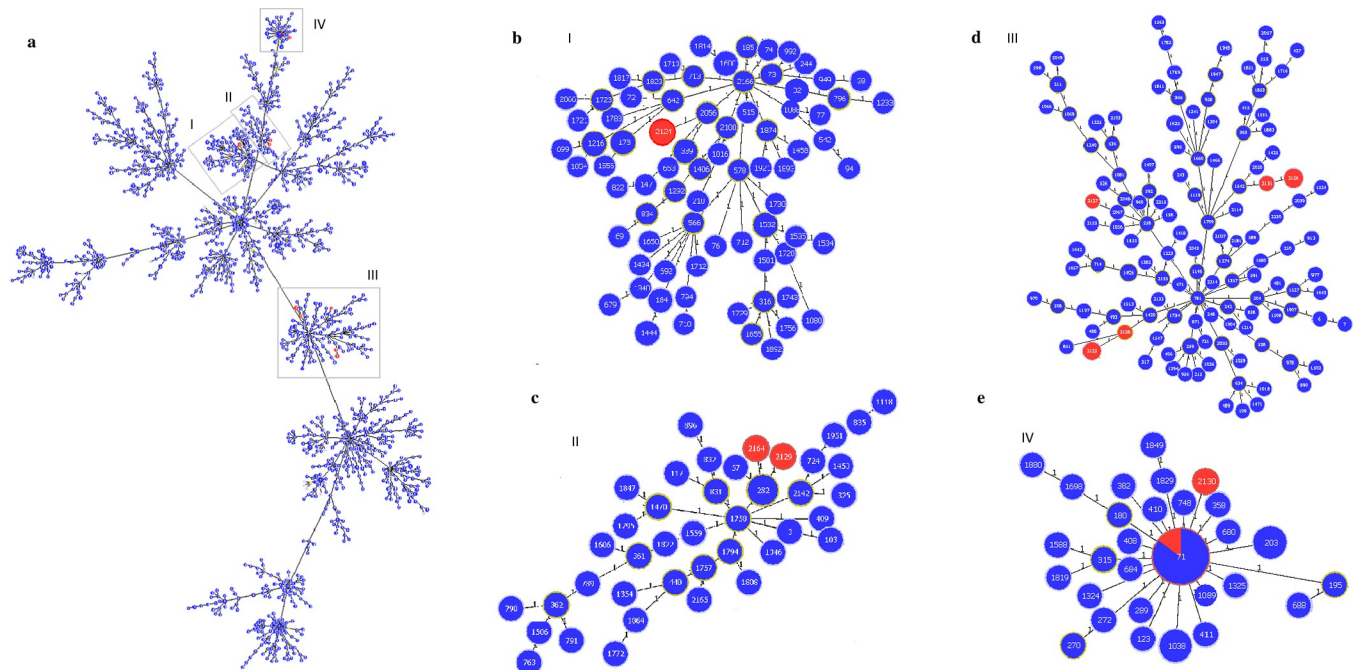


Fig 4. goeBURST population snapshot of *S. pseudintermedius* at single locus variance (SLV). Blue color indicates worldwide strain types, while red color indicates MRSP strains identified in the present study; line numbers indicate allelic variance. **a)** Major populational structure of *S. pseudintermedius*. Clusters of linked isolates correspond to clonal complexes (CCs); singletons are not showed. Gray boxes indicate the localization of STs identified in the current study. **b)** snapshot of CC2166, with ST 2124 in red. **c)** snapshot of CC1758, with STs 2129 and 2164 in red. **d)** snapshot of CC781 and adjacent, with STs 2125, 2126, 2127, 2128 and 2131 in red. **e)** Snapshot of CC71 with STs 71 and 2130 in red.

<https://doi.org/10.1371/journal.pone.0269422.g004>

this frequency is not surprising, considering the main clinical manifestations presented by those animals. In small animal practice, skin infections are commonly seen in routine, being the main reason for antimicrobial administration in dogs, accounting for almost one-third of antimicrobial prescriptions in small animal clinics [45]. Similarly, otitis and bacterial urinary tract disease are common causes of morbidity in dogs and are among the leading causes of antimicrobial use [46–48]; and surgery often requires antimicrobial prophylaxis and post-operative administration of antimicrobials [49, 50]. The main prescribed antibiotics were cefalexin, amoxicillin, amoxicillin/clavulanic acid, and enrofloxacin. Beta-lactams are commonly the most used antimicrobial group in small animals, especially when culture is not available [12, 14, 47].

Except for penicillinase-labile antibiotics, MSSP usually presents satisfactory rates of antimicrobial susceptibility reported in the literature [10, 51–53]. However, our results revealed high rates of antimicrobial resistance to several classes of antibiotics, including veterinary critically important antimicrobial agents [54], in both MSSP and MRSP strains, with significant occurrence of MDR. In contrast, chloramphenicol and nitrofurantoin were the antibiotics with major rates of susceptibility among *S. pseudintermedius* strains, which is expected, since both are forbidden for veterinary use in Brazil [55].

The present study identified an overall occurrence of 24.5% of MRSP among all *S. pseudintermedius* isolates, which is within the expected range, since literature reports variable rates of prevalence of MRSP in dogs, ranging from 0% to 60% [3, 9, 56]. Previous studies conducted in Brazil showed similar or higher rates of MRSP in animals with pyoderma, otitis and UTI [22–25, 46] when compared to the present work. It is important to emphasize that comparisons between different studies are not easy to make, as the prevalence of MRSP depends not only

on the geographic region but also on the type of sample, the population included, and methodology of the study [1, 57].

Interestingly, over 90% of *S. pseudintermedius* strains isolated from surgical wounds were MRSP. Statistical analysis revealed that SSIs, prior antimicrobial treatment, and nosocomial infections are associated with the occurrence of MRSP. This is in agreement with the literature, which has demonstrated that prior antimicrobial exposure, hospitalization, and skin lesions and/or surgical wounds are associated with a higher risk of acquiring MRSP [9, 35, 58–60]. Furthermore, it is possible that the large use of amoxicillin/clavulanic acid, cephalosporins, and fluoroquinolones, which were the main antimicrobials prescribed to dogs included in this study, may be linked to the selection of MRSP [12, 14].

Previous studies using MLST provided information about the population structure of MRSP and have shown that dissemination of this pathogen is linked to some successful clonal lineages, particularly CC71 and CC258 in Europe, CC68 in North America, and both CC45 and CC112 in Asia [56, 61, 62]. In Brazil, only one study has reported the CC of their isolates—a single MRSP ST71 strain isolated from the nostril of a healthy dog [63], so there is no extensive knowledge about the genetic background of *S. pseudintermedius* currently circulating in the country. In the present study, approximately 41.7% (10/24) of the MRSP strains belonged to CC71, which was also reported in Brazil previously [63]. Studies have shown that CC71 is frequently resistant to all antimicrobials used in the routine of small animals, including macrolides, aminoglycosides, and fluoroquinolones, and that it can be associated with higher rates of resistance to oxacillin, amoxicillin/clavulanic acid, cephalothin, and ampicillin [4, 21, 64]. In fact, isolates belonging to CC71 in the present study were all resistant to at least six classes of non-beta-lactam antimicrobials, including fluoroquinolones, which are associated with the successful spread of MDR MRSP lineages [53]. Most CC71 strains were isolated from SSIs at the same veterinary hospital (data not shown), which raised the concern of possible nosocomial transmission as previously reported [59]. Further molecular characterization is required to confirm this hypothesis.

Recent studies across Europe, North America, and Oceania have shown that the prevalence of new lineages is increasing, possibly overcoming the prevalence of CC71 within years [4, 5, 35, 62, 65]. In the present study, 62.5% (15/24) of the MRSP strains belonged to nine new STs. All STs were resistant to at least three different classes of non-beta-lactam antimicrobials, and some of them were isolated from more than one animal. This observation corroborates the hypothesis that events of horizontal gene transfer may be as relevant as clonal dispersion to MRSP and highlights the need for more studies in Brazil to better understand the evolution of these new lineages [1, 4, 35, 56].

This is the first study to extensively investigate the phenotypic and molecular characteristics of *S. pseudintermedius* isolates in Brazil. In addition, this study identified risk factors for acquisition of MRSP and analyzed the population structure of MRSP strains, which contributes to understanding the dispersion of MRSP not only in Brazil, but also in South America, where there is still a lack of information about it. The present study confirmed that *S. pseudintermedius* is the main staphylococcal species isolated from infected dogs in Belo Horizonte. The high rate of MDR observed, especially MRSP-MDR strains, is of great concern. CC71 is currently circulating among Brazilian veterinary clinics and poses a challenge to therapeutic protocols due to its resistance to most antimicrobial classes of daily use in small animal practice and its rapid dispersion. Nevertheless, the new STs found in this study indicate that the spread of MRSP via horizontal gene transfer may be as relevant as clonal dispersion. To our knowledge, this is the first Brazilian report that identified MRSP ST71 in diseased dogs and revealed new circulating STs in the country.

Supporting information

S1 File. Supplementary file: Details of the animals included.

(XLSX)

S2 File. Raw data of the identification and antimicrobial susceptibility tests.

(XLSX)

Acknowledgments

We thank Adriane Pimenta da Costa-Val Bicalho for support and animal samples. We thank Renato Faria for his valuable contribution in the statistical analysis.

Author Contributions

Conceptualization: Júlia Lara Sette Câmara, Rodrigo Otávio Silveira Silva.

Data curation: Flávia Mello Viegas, Henrique César Pereira Figueiredo, Rodrigo Otávio Silveira Silva.

Formal analysis: Flávia Mello Viegas, Jordana Almeida Santana, Rafael Gariglio Clark Xavier, João Luis Reis Cunha, Henrique César Pereira Figueiredo, Rodrigo Otávio Silveira Silva.

Funding acquisition: Rodrigo Otávio Silveira Silva.

Investigation: Flávia Mello Viegas, Jordana Almeida Santana, Brendhal Almeida Silva, Rafael Gariglio Clark Xavier, Júlia Lara Sette Câmara, Mário Cesar Rennó, João Luis Reis Cunha, Henrique César Pereira Figueiredo, Rodrigo Otávio Silveira Silva.

Methodology: Flávia Mello Viegas, Jordana Almeida Santana, Brendhal Almeida Silva, Rafael Gariglio Clark Xavier, Cláudia Teixeira Bonisson, Júlia Lara Sette Câmara, Mário Cesar Rennó, João Luis Reis Cunha, Henrique César Pereira Figueiredo, Francisco Carlos Faria Lobato, Rodrigo Otávio Silveira Silva.

Supervision: Francisco Carlos Faria Lobato.

Validation: João Luis Reis Cunha.

Writing – original draft: Flávia Mello Viegas, Francisco Carlos Faria Lobato, Rodrigo Otávio Silveira Silva.

Writing – review & editing: Flávia Mello Viegas, Jordana Almeida Santana, Brendhal Almeida Silva, Cláudia Teixeira Bonisson, Júlia Lara Sette Câmara, Mário Cesar Rennó, João Luis Reis Cunha, Henrique César Pereira Figueiredo, Rodrigo Otávio Silveira Silva.

References

1. Bannoehr J, Guardabassi L. *Staphylococcus pseudintermedius* in the dog: Taxonomy, diagnostics, ecology, epidemiology and pathogenicity. *Vet Dermatol.* 2012; 23(4). <https://doi.org/10.1111/j.1365-3164.2012.01046.x> PMID: 22515504
2. Murray AK, Lee J, Bendall R, Zhang L, Sunde M, Schau Slette-meås J, et al. *Staphylococcus cornubien-sis* sp. nov., a member of the *Staphylococcus intermedius* group (SIG). *Int J Syst Evol Microbiol* 2018; 68: 3404–8. <https://doi.org/10.1099/ijsem.0.002992> PMID: 30204583
3. Weese JS, van Duijkeren E. Methicillin-resistant *Staphylococcus aureus* and *Staphylococcus pseudintermedius* in veterinary medicine. *Vet Microbiol.* 2010; 140: 418–29. <https://doi.org/10.1016/j.vetmic.2009.01.039> PMID: 19246166
4. Duim B, Verstappen KM, Broens EM, Laarhoven LM, Van Duijkeren E, Hordijk J, et al. Changes in the population of methicillin-resistant *Staphylococcus pseudintermedius* and dissemination of

- antimicrobial-resistant phenotypes in the Netherlands. *J Clin Microbiol.* 2016; 54(2): 283–8. <https://doi.org/10.1128/JCM.01288-15> PMID: 26582835
5. Bergot M, Martins-Simoes P, Kilian H, Châtre P, Worthing KA, Norris JM, et al. Evolution of the population structure of *Staphylococcus pseudintermedius* in France. *Front Microbiol.* 2018; 9: 1–10. <https://doi.org/10.3389/fmicb.2018.03055>
 6. Wegener A, Broens EM, Zomer A, Spaninks M, Wagenaar JA, Duim B. Comparative genomics of phenotypic antimicrobial resistances in methicillin-resistant *Staphylococcus pseudintermedius* of canine origin. *Vet Microbiol.* 2018; 225: 125–31. Available from: <https://doi.org/10.1016/j.vetmic.2018.09.013> PMID: 30322524
 7. Gagetti P, Wattam AR, Giacoboni G, De Paulis A, Bertona E, Corso A, et al. Identification and molecular epidemiology of methicillin resistant *Staphylococcus pseudintermedius* strains isolated from canine clinical samples in Argentina. *BMC Vet Res.* 2019; 15(1): 1–12. <https://doi.org/10.1186/s12917-019-1990-x>
 8. Krapp M, Müller E, Reissig A, Slickers P, Braun SD, Müller E, et al. Molecular characterisation of methicillin-resistant *Staphylococcus pseudintermedius* from dogs and the description of their SCCmec elements. *Vet Microbiol.* 2019; 233: 196–203. <https://doi.org/10.1016/j.vetmic.2019.04.002> PMID: 31053353
 9. van Duijkeren E, Catry B, Greko C, Moreno MA, Pomba MC, Pyörälä S, et al. Review on methicillin-resistant *Staphylococcus pseudintermedius*. *J Antimicrob Chemother.* 2011; 66(12): 2705–14. <https://doi.org/10.1093/jac/dkr367> PMID: 21930571
 10. Kadlec K, Schwarz S. Antimicrobial resistance of *Staphylococcus pseudintermedius*. *Vet Dermatol.* 2012; 23(4): 19–25. <https://doi.org/10.1111/j.1365-3164.2012.01056.x> PMID: 22681522
 11. Morris DO, Loeffler A, Davis MF, Guardabassi L, Weese JS. Recommendations for approaches to methicillin-resistant staphylococcal infections of small animals: diagnosis, therapeutic considerations and preventative measures.: Clinical Consensus Guidelines of the World Association for Veterinary Dermatology. *Vet Dermatol.* 2017; 28(3): 304–e69. <https://doi.org/10.1111/vde.12444> PMID: 28516494
 12. Pomba C, Rantala M, Greko C, Baptiste KE, Catry B, van Duijkeren E, et al. Public health risk of antimicrobial resistance transfer from companion animals. *J Antimicrob Chemother.* 2016; 72(4): 957–68. <https://doi.org/10.1093/jac/dkw481>
 13. Kang JH, Hwang CY. One health approach to genetic relatedness in SCCmec between methicillin-resistant *Staphylococcus* isolates from companion dogs with pyoderma and their owners. *Vet Microbiol.* 2021; 253: 108957. <https://doi.org/10.1016/j.vetmic.2020.108957> PMID: 33385887
 14. Guardabassi L, Larsen J, Weese JS, Butaye P, Battisti A, Kluytmans J, et al. Public health impact and antimicrobial selection of methicillin-resistant staphylococci in animals. *J Glob Antimicrob Resist.* 2013; 1(2): 55–62. <https://doi.org/10.1016/j.jgar.2013.03.011> PMID: 27873579
 15. Somayaji R, Priyantha MAR, Rubin JE, Church D. Human infections due to *Staphylococcus pseudintermedius*, an emerging zoonosis of canine origin: report of 24 cases. *Diagn Microbiol Infect Dis.* 2016; 85(4): 471–6. <https://doi.org/10.1016/j.diagmicrobio.2016.05.008> PMID: 27241371
 16. Lozano C, Rezusta A, Ferrer I, Pérez-Laguna V, Zarazaga M, Ruiz-Ripa L, et al. *Staphylococcus pseudintermedius* Human Infection Cases in Spain: Dog-to-Human Transmission. *Vector-Borne Zoonotic Dis.* 2017; 17(4): 268–70. <https://doi.org/10.1089/vbz.2016.2048> PMID: 28075235
 17. Ference EH, Danielian A, Kim HW, Yoo F, Kuan EC, Suh JD. Zoonotic *Staphylococcus pseudintermedius* sinonasal infections: risk factors and resistance patterns. *Int Forum Allergy Rhinol.* 2019; 9(7): 724–9. <https://doi.org/10.1002/alr.22329> PMID: 30907985
 18. Blondeau LD, Rubin JE, Deneer H, Kanthan R, Morrison B, Sanche S, et al. Persistent infection with *Staphylococcus pseudintermedius* in an adult oncology patient with transmission from a family dog. *J Chemother.* 2020: 1–5. <https://doi.org/10.1080/1120009X.2020.1735142> PMID: 32124685
 19. Gagetti P, Errecalde L, Wattam AR, De Belder D, Ojeda Saavedra M, Corso A, et al. Characterization of the First mecA-Positive Multidrug-Resistant *Staphylococcus pseudintermedius* Isolated from an Argentinian Patient. *Microb Drug Resist.* 2020: 1–5. <https://doi.org/10.1089/mdr.2019.0308>
 20. Stegmann R, Burnens A, Maranta CA, Perreten V. Human infection associated with methicillin-resistant *Staphylococcus pseudintermedius* ST71. *J Antimicrob Chemother.* 2010; 65(9): 2047–8. <https://doi.org/10.1093/jac/dkq241> PMID: 20601356
 21. Paul NC, Moodley A, Ghibaud G, Guardabassi L. Carriage of methicillin-resistant *Staphylococcus pseudintermedius* in small animal veterinarians: Indirect evidence of zoonotic transmission. *Zoonoses Public Health.* 2011; 58(8): 533–9. <https://doi.org/10.1111/j.1863-2378.2011.01398.x> PMID: 21824350
 22. Penna B, Varges R, Martins R, Martins G, Lilienbaum W. In vitro antimicrobial resistance of staphylococci isolated from canine urinary tract infection. *Can Vet J.* 2010; 51(7): 738–42. PMID: 20885826

23. Botoni LS, Scherer CB, Silva RO, Coura FM, Heinemann MB, Paes-Leme FO, et al. Prevalence and in vitro susceptibility of methicillin-resistant *Staphylococcus pseudintermedius* (MRSP) from skin and nostrils of dogs with superficial pyoderma. *Pesqui Vet Bras*. 2016; 36(12): 1178–80. <https://doi.org/10.1590/S0100-736X2016001200006>
24. Bourguignon E, Viçosa GN, Corsini CMM, Moreira MAS, Nero LA, Conceição LG. Description of Methicillin-resistant *Staphylococcus pseudintermedius* from canine pyoderma in Minas Gerais state, Brazil. *Arq Bras Med Vet e Zootec*. 2016; 68(2): 299–306. <https://doi.org/10.1590/1678-4162-8150>
25. Scherer CB, Botoni LS, Coura FM, Silva RO, Dos Santos RD, Heinemann MB, et al. Frequency and antimicrobial susceptibility of *Staphylococcus pseudintermedius* in dogs with otitis externa. *Cienc Rural*. 2018; 48(4): e20170738. <https://doi.org/10.1590/0103-8478cr20170738>
26. Assis GBN, Pereira FL, Zegarra AU, Tavares GC, Leal CA, Figueiredo HCP. Use of MALDI-TOF mass spectrometry for the fast identification of gram-positive fish pathogens. *Front Microbiol*. 2017; 8. <https://doi.org/10.3389/fmicb.2017.01492> PMID: 28848512
27. Sasaki T, Tsubakishita S, Tanaka Y, Sakusabe A, Ohtsuka M, Hirotsuki S, et al. Multiplex-PCR method for species identification of coagulase-positive staphylococci. *J Clin Microbiol*. 2010; 48(3): 765–9. <https://doi.org/10.1128/JCM.01232-09> PMID: 20053855
28. Fox JG, Ge Z, Whary MT, Erdman SE, Horwitz BH. *Helicobacter hepaticus* infection in mice: Models for understanding lower bowel inflammation and cancer. *Mucosal Immunol*. 2011; 4(1): 22–30. <https://doi.org/10.1038/mi.2010.61> PMID: 20944559
29. Mellmann A, Becker K, Von Eiff C, Keckevoet U, Schumann P, Harmsen D. Sequencing and staphylococci identification. *Emerg Infect Dis*. 2006; 12(2): 333–6. <https://doi.org/10.3201/eid1202.050962> PMID: 16494767
30. Clinical and Laboratory Standards Institute (CLSI). Performance Standards for Antimicrobial Susceptibility Testing. 31st ed. CLSI supplement M100; ISBN 978-1-68440-105-5. Clinical and Laboratory Standards Institute, USA, 2021.
31. Clinical and Laboratory Standards Institute (CLSI). Performance Standards for Antimicrobial Disk and Dilution Susceptibility Tests for Bacteria Isolated From Animals. 5th ed. CLSI supplement VET01S; ISBN 978-1-68440-093-5. Clinical and Laboratory Standards Institute, USA, 2020.
32. Pitcher DG, Saunders NA, Owen RJ. Rapid extraction of bacterial genomic DNA with guanidium thiocyanate. *Lett Appl Microbiol*. 1989; 8(4): 151–6. <https://doi.org/10.1111/j.1472-765X.1989.tb00262.x>
33. Murakami K.; Minamide W.; Wada K.; Nakamura E.; Teraoka H.; Watanabe S. Identification of Methicillin-Resistant Strains of Staphylococci by Polymerase Chain Reaction. *Am J Clin Pathol [Internet]*. 1991; 29(10): 2240–4. <https://doi.org/10.1128/jcm.29.10.2240-2244.1991> PMID: 1939577
34. Solyman SM, Black CC, Duim B, Perreten V, Van Duijkeren E, Wagenaar JA, et al. Multilocus sequence typing for characterization of *Staphylococcus pseudintermedius*. *J Clin Microbiol*. 2013; 51(1): 306–10. <https://doi.org/10.1128/JCM.02421-12> PMID: 23115265
35. Grönthal T, Eklund M, Thomson K, Piiparinen H, Sironen T, Rantala M. Antimicrobial resistance in *Staphylococcus pseudintermedius* and the molecular epidemiology of methicillin-resistant *S. pseudintermedius* in small animals in Finland. *J Antimicrob Chemother*. 2017; 72(4): 1021–30. <https://doi.org/10.1093/jac/dkw559> PMID: 28065889
36. Nascimento M, Sousa A, Ramirez M, Francisco AP, Carriço JA, Vaz C. PHYLOViZ 2.0: Providing scalable data integration and visualization for multiple phylogenetic inference methods. *Bioinformatics*. 2017; 33(1): 128–9. <https://doi.org/10.1093/bioinformatics/btw582> PMID: 27605102
37. Francisco AP, Bugalho M, Ramirez M, Carriço JA. Global optimal eBURST analysis of multilocus typing data using a graphic matroid approach. *BMC Bioinformatics*. 2009; 10: 1–15. <https://doi.org/10.1186/1471-2105-10-152>
38. Minh BQ, Schmidt HA, Chernomor O, Schrempf D, Woodhams MD, Von Haeseler A, et al. IQ-TREE 2: New Models and Efficient Methods for Phylogenetic Inference in the Genomic Era. *Mol Biol Evol*. 2020; 37(5): 1530–4. <https://doi.org/10.1093/molbev/msaa015> PMID: 32011700
39. Letunic I, Bork P. Interactive Tree of Life (iTOL) v4: Recent updates and new developments. *Nucleic Acids Res*. 2019; 47: 256–9. <https://doi.org/10.1093/nar/gkz239> PMID: 30931475
40. Madhaiyan M, Wirth JS, Saravanan VS. Phylogenomic analyses of the *Staphylococcaceae* family suggest the reclassification of five species within the genus *Staphylococcus* as heterotypic synonyms, the promotion of five subspecies to novel species, the taxonomic reassignment of five *Staphylococcus* species to *Mammaliococcus* gen. Nov., and the formal assignment of *Nosocomiicoccus* to the family *Staphylococcaceae*. *Int J Syst Evol Microbiol*. 2020; 70(11): 5926–36. <https://doi.org/10.1099/ijsem.0.004498> PMID: 33052802
41. Hensel N, Zabel S, Hensel P. Prior antibacterial drug exposure in dogs with methicillin-resistant *Staphylococcus pseudintermedius* (MRSP) pyoderma. *Vet Dermatol*. 2016; 27(2): 72–e20. <https://doi.org/10.1111/vde.12292> PMID: 26909526

42. Morris DO, Rook KA, Shofer FS, Rankin SC. Screening of *Staphylococcus aureus*, *Staphylococcus intermedius*, and *Staphylococcus schleiferi* isolates obtained from small companion animals for antimicrobial resistance: A retrospective review of 749 isolates (2003–04). *Vet Dermatol*. 2006; 17(5): 332–7. <https://doi.org/10.1111/j.1365-3164.2006.00536.x> PMID: 16961819
43. Lee GY, Lee HH, Hwang SY, Hong J, Lyoo KS, Yang SJ. Carriage of *Staphylococcus schleiferi* from canine otitis externa: Antimicrobial resistance profiles and virulence factors associated with skin infection. *J Vet Sci*. 2019; 20(2): 1–11. <https://doi.org/10.4142/jvs.2019.20.e6> PMID: 30944529
44. World Organisation for Animal Health (OIE). Antimicrobial resistance. Available at <https://www.oie.int/en/what-we-do/global-initiatives/antimicrobial-resistance/>
45. Larsen RF, Boysen L, Jessen LR, Guardabassi L, Damborg P. Diversity of *Staphylococcus pseudintermedius* in carriage sites and skin lesions of dogs with superficial bacterial folliculitis: potential implications for diagnostic testing and therapy. *Vet Dermatol*. 2018; 29(4): 291–e100. <https://doi.org/10.1111/vde.12549> PMID: 29781542
46. Penna B, Varges R, Medeiros L, Martins GM, Martins RR, Lilenbaum W. Species distribution and antimicrobial susceptibility of staphylococci isolated from canine otitis externa. *Vet Dermatol* [Internet]. 2010(3): 292–6. <https://doi.org/10.1111/j.1365-3164.2009.00842.x> PMID: 20042036
47. Weese JS, Blondeau J, Boothe D, Guardabassi LG, Gumley N, Papich M, et al. International Society for Companion Animal Infectious Diseases (ISCAID) guidelines for the diagnosis and management of bacterial urinary tract infections in dogs and cats. *Vet J*. 2019; 247: 8–25. <https://doi.org/10.1016/j.tvjl.2019.02.008> PMID: 30971357
48. Lynch SA, Helbig KJ. The complex diseases of *Staphylococcus pseudintermedius* in canines: Where to next? *Vet Sci*. 2021; 8(1): 1–19. <https://doi.org/10.3390/vetsci8010011> PMID: 33477504
49. Nelson LL. Surgical site infections in small animal surgery. *Vet Clin North Am—Small Anim Pract*. 2011; 41(5): 1041–56. <https://doi.org/10.1016/j.cvsm.2011.05.010> PMID: 21889700
50. British Small Animal Veterinary Association. BSAVA/SAMSoc Guide to Responsible Use of Antibacterials: PROTECT ME. 2018. Available at <https://www.bsavalibrary.com/content/book/10.22233/9781910443644#overview>.
51. Frank LA, Loeffler A. Methicillin-resistant *Staphylococcus pseudintermedius*: clinical challenge and treatment options. *Vet Dermatol*. 2012; 23(4): 283–e56. <https://doi.org/10.1111/j.1365-3164.2012.01047.x> PMID: 22486942
52. Moodley A, Damborg P, Nielsen SS. Antimicrobial resistance in methicillin susceptible and methicillin resistant *Staphylococcus pseudintermedius* of canine origin: Literature review from 1980 to 2013. *Vet Microbiol*. 2014; 171: 337–41. <https://doi.org/10.1016/j.vetmic.2014.02.008> PMID: 24613081
53. McCarthy AJ, Harrison EM, Stanczak-Mrozek K, Leggett B, Waller A, Holmes MA, et al. Genomic insights into the rapid emergence and evolution of MDR in *Staphylococcus pseudintermedius*. *J Antimicrob Chemother*. 2015; 70(4): 997–1007. <https://doi.org/10.1093/jac/dku496> PMID: 25527273
54. World Organisation for Animal Health (OIE). OIE List of Antimicrobial Agents of Veterinary Importance. OIE Int Committee. 2018. Available at: <http://www.oie.int>
55. BRAZIL. MAPA (Ministry of Agriculture, Livestock and Food Supply). Instrução normativa n. 9 de 27 de junho de 2003. Brasília. Diário oficial da União, Seção 1. 2003; p. 4. Available at <https://www.gov.br/agricultura/pt-br/assuntos/insumos-agropecuarios/insumos-pecuarios/alimentacao-animal/arquivos-alimentacao-animal/legislacao/instrucao-normativa-no-9-de-27-de-junho-de-2003.pdf/view>
56. Pires dos Santos T, Damborg P, Moodley A, Guardabassi L. Systematic Review on Global Epidemiology of Methicillin-Resistant *Staphylococcus pseudintermedius*: Inference of Population Structure from Multilocus Sequence Typing Data. *Front Microbiol*. 2016; 7: 1–12. <https://doi.org/10.3389/fmicb.2016.01599>
57. Hritcu OM, Schmidt VM, Salem SE, Maciucă IE, Moraru RF, Lipovan I, et al. Geographical Variations in Virulence Factors and Antimicrobial Resistance Amongst Staphylococci Isolated From Dogs From the United Kingdom and Romania. *Front Vet Sci*. 2020; 7: 1–10. <https://doi.org/10.3389/fvets.2020.00414>
58. Weese JS, Faires MC, Frank LA, Reynolds LM, Battisti A. Factors associated with methicillin-resistant versus methicillin-susceptible *Staphylococcus pseudintermedius* infection in dogs. *J Am Vet Med Assoc*. 2012; 240(12): 1450–5. <https://doi.org/10.2460/javma.240.12.1450> PMID: 22657928
59. Grönthal T, Moodley A, Nykäsenoja S, Junnila J, Guardabassi L, Thomson K, et al. Large outbreak caused by Methicillin resistant *Staphylococcus pseudintermedius* ST71 in a Finnish veterinary teaching hospital—From outbreak control to outbreak prevention. *PLoS One*. 2014; 9(10): e110084. <https://doi.org/10.1371/journal.pone.0110084> PMID: 25333798
60. Saputra S, Jordan D, Worthing KA, Norris JM, Wong HS, Abraham R, et al. Antimicrobial resistance in coagulase-positive staphylococci isolated from companion animals in Australia: A one year study. Smith TC, editor. *PLoS One*. 2017; 12(4): e0176379. <https://doi.org/10.1371/journal.pone.0176379> PMID: 28430811

61. Perreten V, Kadlec K, Schwarz S, Gronlund Andersson U, Finn M, Greko C, et al. Clonal spread of methicillin-resistant *Staphylococcus pseudintermedius* in Europe and North America: an international multicentre study. *J Antimicrob Chemother.* 2010; 65(6): 1145–54. <https://doi.org/10.1093/jac/dkq078> PMID: 20348087
62. Meroni G, Soares Filipe JF, Drago L, Martino PA. Investigation on Antibiotic-Resistance, Biofilm Formation and Virulence Factors in Multi Drug Resistant and Non Multi Drug Resistant *Staphylococcus pseudintermedius*. *Microorganisms.* 2019; 7(702). <https://doi.org/10.3390/microorganisms7120702> PMID: 31888149
63. Quitoco IMZ, Ramundo MS, Silva-Carvalho MC, Souza RR, Beltrame CO, de Oliveira TF, et al. First report in South America of companion animal colonization by the USA1100 clone of community-acquired methicillin-resistant *Staphylococcus aureus* (ST30) and by the European clone of methicillin-resistant *Staphylococcus pseudintermedius* (ST71). *BMC Res Notes.* 2013; 6(336). <https://doi.org/10.1186/1756-0500-6-336> PMID: 23981343
64. Wegener A, Damborg P, Guardabassi L, Moodley A, Mughini-Gras L, Duim B, et al. Specific staphylococcal cassette chromosome *mec* (SCC*mec*) types and clonal complexes are associated with low-level amoxicillin/clavulanic acid and cefalotin resistance in methicillin-resistant *Staphylococcus pseudintermedius*. *J Antimicrob Chemother.* 2020; 75(3): 508–11. <https://doi.org/10.1093/jac/dkz509> PMID: 31846043
65. Nisa S, Bercker C, Midwinter AC, Bruce I, Graham CF, Venter P, et al. Combining MALDI-TOF and genomics in the study of methicillin resistant and multidrug resistant *Staphylococcus pseudintermedius* in New Zealand. *Sci Rep.* 2019; 9(1271). <https://doi.org/10.1038/s41598-018-37503-9> PMID: 30718644