

RESEARCH ARTICLE

Post-fire pickings: Large herbivores alter understory vegetation communities in a coastal eucalypt forest

Matthew Chard¹  | Claire N. Foster¹ | David B. Lindenmayer¹  | Geoffrey J. Cary¹ | Christopher I. MacGregor^{1,2} | Wade Blanchard¹

¹Fenner School of Environment & Society, The Australian National University, Canberra, ACT, Australia

²Threatened Species Recovery Hub, National Environmental Science Program, Fenner School of Environment & Society, The Australian National University, Canberra, ACT, Australia

Correspondence

Matthew Chard, Fenner School of Environment and Society, 141 Linnaeus Way, Acton, ACT 2601, Australia.
Email: Matthew.Chard@anu.edu.au

Funding information

Australian Research Council; Department of Defence, Australian Government, Grant/Award Number: LP170100152

Abstract

Fire and herbivores alter vegetation structure and function. Future fire activity is predicted to increase, and quantifying changes in vegetation communities arising from post-fire herbivory is needed to better manage natural environments. We investigated the effects of post-fire herbivory on understory plant communities in a coastal eucalypt forest in southeastern Australia. We quantified herbivore activity, understory plant diversity, and dominant plant morphology following a wildfire in 2017 using two sizes of exclosures. Statistical analysis incorporated the effect of exclusion treatments, time since fire, and the effect of a previous prescribed burn. Exclusion treatments altered herbivore activity, but time since fire did not. Herbivory reduced plant species richness, diversity, and evenness and promoted the dominance of the most abundant plants within the understory. Increasing time since fire reduced community diversity and evenness and influenced morphological changes to the dominant understory plant species, increasing size and dead material while decreasing abundance. We found the legacy effects of a previous prescribed burn had no effect on herbivores or vegetation within our study. Foraging by large herbivores resulted in a depauperate vegetation community. As post-fire herbivory can alter vegetation communities, we postulate that management burning practices may exacerbate herbivore impacts. Future fire management strategies to minimize herbivore-mediated alterations to understory vegetation could include aggregating management burns into larger fire sizes or linking fire management with herbivore management. Restricting herbivore access following fire (planned or otherwise) can encourage a more diverse and species-rich understory plant community. Future research should aim to determine how vegetation change from post-fire herbivory contributes to future fire risk.

KEYWORDS

herbivory, large herbivore, macropod, post-fire, vegetation community

TAXONOMY CLASSIFICATION

Biodiversity ecology

This is an open access article under the terms of the Creative Commons Attribution License, which permits use, distribution and reproduction in any medium, provided the original work is properly cited.

© 2022 The Authors. *Ecology and Evolution* published by John Wiley & Sons Ltd.

1 | INTRODUCTION

Fire and herbivores are consumers of vegetation, modifying the structure and function of plant communities (Bond & Keeley, 2005). Interactions between these disturbances can occur in ecosystems where both fire and herbivores are prevalent. However, few studies have implemented manipulative field studies to measure the long-term responses of forest vegetation to both fire and herbivory (Foster et al., 2016; Nuttle et al., 2013; Royo & Carson, 2006). As forest ecosystems are likely to face increased fire activity in the future (Bowman et al., 2009), more research that quantifies interactions between fire and herbivory on plant communities is required.

Fire can encourage or deter herbivore foraging (Allred et al., 2011; Fuhlendorf et al., 2010). Research into fire–herbivore relationships, under the banner of “pyric herbivory,” has emphasized the capacity for fire to influence foraging selection by herbivores (Allred et al., 2011). Large herbivores (>2 kg) can be attracted to burnt patches due to increased abundance of new growth and more favorable physical or chemical accessibility to food (Allred et al., 2011; Danell et al., 2006; Foster et al., 2016). However, limited research has been conducted on the next logical question within fire-prone ecosystems, which is: How does the vegetation community respond when it is burnt, and then foraged? Manipulative experiments are required to answer this question (Figure 1).

Information on changes in vegetation communities arising from post-fire herbivory may guide future fire management practices. Large herbivores can alter plant succession following a fire through foraging, trampling, and alterations in nutrients (by defecation, urination, decomposition of carcasses, etc.; Forbes et al., 2019; Persson et al., 2000). Herbivores actively select for more palatable species, which leads to the dominance of unpalatable, chemically defended plant species, or an increased abundance of highly palatable plants through nutrient cycling and seed dispersal (Augustine & McNaughton, 1998; Bakker et al., 2016; Leroux et al., 2020). Changes to aboveground plant biomass is a direct modification of *in situ* fuel load (Archibald & Hempson, 2016). Fire also can promote the abundance of more flammable plants (through positive feedback

loops) that are often less palatable for herbivores (due to lower moisture content, increased tannins/oils, higher carbon-nitrogen ratios, etc.; Archibald & Hempson, 2016). As dominant plant species can influence fire risk (Cheney et al., 2012; Zylstra et al., 2016), quantifying the changes to plant communities from post-fire herbivory will be paramount to future wildfire management and predictions (Figure 2).

We aimed to answer the question: How does post-fire herbivory alter understory plant communities and physical attributes of the dominant plants in a eucalypt forest? We used a manipulative field study at Booderee National Park that modified large herbivore activity through different levels of fencing. At all plots, we tested the effects of fencing treatments and time since fire on herbivore activity, vegetation community measures, and morphological responses of the dominant understory plant. Where applicable, we also investigated the effect of the previous prescribed burn (5 years prior) applied to selected plots. We expected large herbivores to be attracted to recently burnt areas due to the availability of fresh growth and herbivore occurrence would decline over time as the vegetation regenerates (Allred et al., 2011). This response has been observed following prescribed burns in eucalypt forest (Foster et al., 2015; Parkins et al., 2019). However, it is possible that this effect will be less evident following a larger wildfire where herbivores have a larger area of burnt space to select from.

While fire can reduce habitat complexity (Parkins et al., 2019), the interaction of fire and (increased) herbivory may result in an altered vegetation community with reduced species diversity (Foster et al., 2015). Fire will promote germination and growth of understory plants, resulting in a short-term increase in species richness (Ross et al., 2002). Species richness within the understory plant community typically decreases with time since fire due to increased competition and reduced space (Foster et al., 2018). Large herbivores can dramatically alter the recovering understory vegetative community by preferentially selecting the more palatable species (Persson et al., 2000). We expect that this should result in a decrease in community measures such as richness, diversity, and evenness and promote the dominance of less palatable plants



FIGURE 1 Large herbivores present in our study, the (a) swamp wallaby (*Wallabia bicolor*) and the (b) eastern grey kangaroo (*Macropus giganteus*). Photo credit: C. N. Foster & J. Clarke

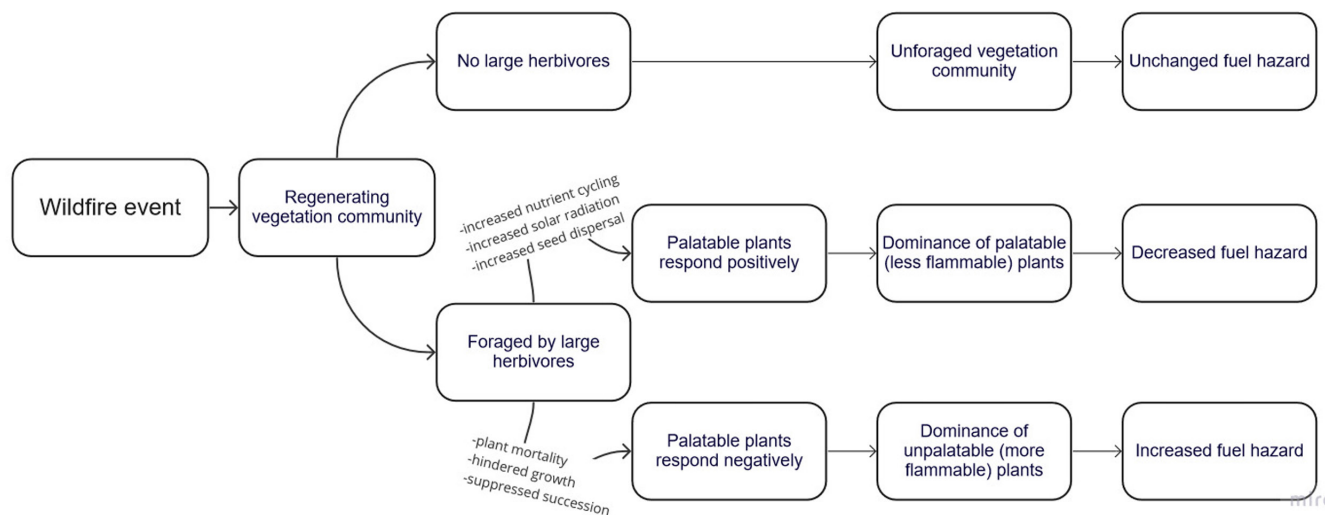


FIGURE 2 Hypothesised outcomes of foraging from large herbivores following a fire event in a eucalypt forest environment

within burnt patches (Foster et al., 2016). In addition, we expect the influence of the prior prescribed burn to exacerbate herbivore impacts following a wildfire as the vegetation has been subject to a short (5 years) fire interval and may be more sensitive to further disturbance compared to areas that were not subject to the prescribed burn (Furlaud et al., 2018).

A particular concern for managers of our study area has been the increase in dominance of the fern *Pteridium esculentum* (bracken) in the understory vegetation (Dexter et al., 2013). Current management of Booderee National Park is based on the understanding that abundant large herbivore populations, coupled with recurrent fires (prescribed burns and wildfires), are promoting bracken dominance (Dexter et al., 2013). Bracken has reduced palatability for larger herbivores (Di Stefano & Newell, 2008) and is an early-successional and fire-resistant plant (Tolhurst & Turvey, 1992). The ramifications for both biodiversity and future fire risk resulting from a bracken-dominated understory are currently unknown. We aimed to provide quantitative evidence on the effect that post-fire herbivory has on the morphology and abundance of bracken.

By focusing our study in a post-wildfire eucalypt forest, we predicted that: (1) enclosure treatments would reduce herbivore activity and herbivore activity would decline with increasing time since fire; (2) increased herbivore activity and increasing time since fire would reduce the species richness, diversity, and evenness of the plant community and increase understory dominance of unpalatable understory species; and (3) increased herbivore activity and increasing time since fire would alter morphological measures of the dominant understory plant, promoting larger plants and higher abundance within plots. Furthermore, we predicted the influence of the previous prescribed burn would exacerbate herbivore impacts. Plots subject to the prescribed burn followed by large herbivore browsing were expected to have lower initial plant diversity prior to the 2017 fire (Foster et al., 2015). Therefore, the 2017 wildfire and

subsequent foraging by large herbivores was expected to further decrease plant diversity and increase dominant plant abundance at sites burnt in 2012.

2 | METHODS

2.1 | Study area

We conducted this study at Booderee National Park (35.1489415°S, 150.6454625°E; Figure 3) on the southeast coast of Australia, approximately 200 km south of Sydney. The Park is ~6500 ha in area and co-managed by the Wreck Bay Aboriginal Community and Parks Australia. The dominant vegetation class in the park is Sydney Coastal Dry Sclerophyll Forest (45% of the park area) which is characterized by canopy species of *Eucalyptus pilularis*, *Corymbia gummifera*, and *Eucalyptus botryoides*, midstory species of *Banksia serrata* and *Monotoca elliptica*, and an understory dominated by *P. esculentum*, *Lomandra longifolia*, and *Lepidosperma concavum* (Taws, 1997).

2.2 | Study species

Three species of macropod in Booderee National Park meet the “large herbivore” classification (>2 kg; *sensu* Danell et al., 2006). They are the eastern grey kangaroo (*Macropus giganteus*); swamp wallaby (*Wallabia bicolor*); and red-necked wallaby (*M. rufogriseus*). No other large terrestrial herbivore species are currently found in Booderee National Park. All three macropods have previously demonstrated pyric herbivory responses with most studies identifying a preference for recently burnt patches due to a higher quality of foraging resources (Foster et al., 2015; Meers & Adams, 2003; Parkins et al., 2019; Southwell & Jarman, 1987).

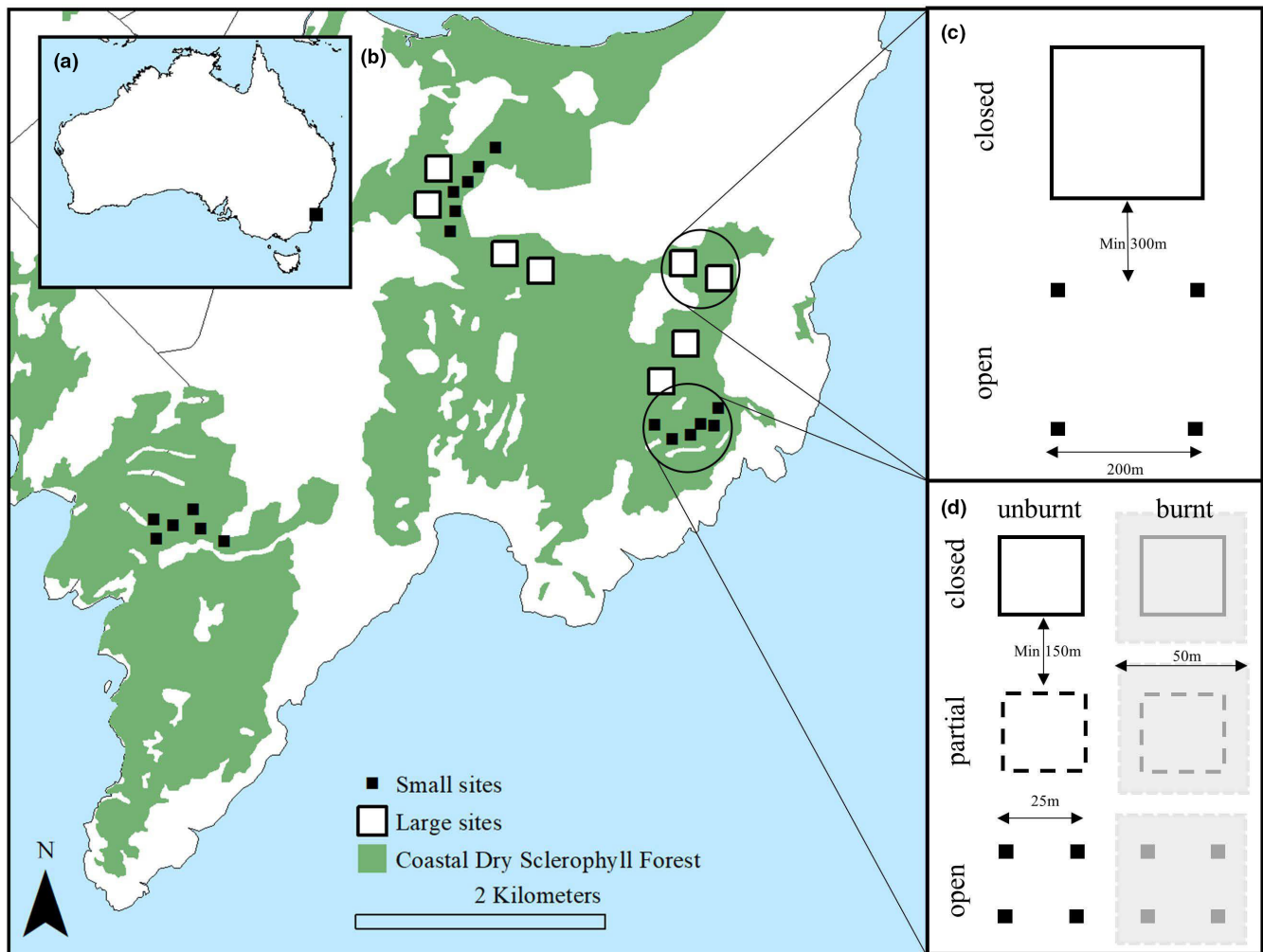


FIGURE 3 Study location and experimental design showing: (a) Location of Booderee National Park, Australia; and (b) The distribution of the small and large plots across the park. All plots were located within coastal dry sclerophyll forest (in green) and had been burnt in the 2017 wildfire. Eight large plots were paired into four blocks and 18 small plots were grouped into 3 blocks; (c) and (d) highlight the design within each block for both large and small plots respectively. Note half of the small plots were subject to a prescribed burn conducted in 2012

Of the three macropod species, the eastern grey kangaroo and the swamp wallaby are the most common in Booderee National Park (Chard et al., 2021). While density measures have not been conducted for any macropod species, previous research analyzing conditional abundance of the swamp wallaby peaked between 2007 and 2013 compared to when surveys began in 2003 (Lindenmayer et al., 2016). Furthermore, managers have been concerned with the growing population of macropods in Booderee National Park (Dexter et al., 2013). Previous research in the study area found both species preferentially selected forest vegetation communities (Chard et al., 2021). The eastern grey kangaroo is a grazing species, targeting grass species such as *Imperata cylindrica* and *Themeda triandra* (Brunton et al., 2018). The swamp wallaby is a browsing species that will forage on most understory plants in a forest community with a preference for forb species (Di Stefano & Newell, 2008). For more detailed descriptions on each species preferred plant foods see Chard et al. (2021).

2.3 | Study design

We quantified the interacting effects of post-fire herbivory on vegetation communities using two randomized, blocked experiments. In June 2012, we established three blocks of six 25 × 25 m plots (0.0625 ha, hereafter referred to as “small” plots) within Sydney Coastal Dry Sclerophyll Forest, with plots spaced 150 m apart and blocks 2 km apart. We manipulated grazing pressure by macropods using three methods of fencing: (1) open (i.e., no fencing), (2) partial fencing – intermediate access with gates at two corners of the plot which were opened or closed at 2-month intervals, and (3) closed (completely fenced). We constructed 1.1-m-tall fences which prevented access by macropods (Foster et al., 2015). We conducted low-intensity, prescribed burns in August 2012 within half of the plots in each block so that each fencing treatment had one burnt and one unburnt pair. Controlled fires were extinguished after burning a 50 × 50 m area and removing

approximately 95% of the understory vegetation. This facilitated examination of two burning treatments across three herbivory measures within all three blocks. Although a wildfire in 2017 burnt all plots, we describe our small plots as “burnt” or “unburnt” as per the initial prescribed burn conducted in 2012.

In September 2017, a wildfire burned 1600 ha of Booderee National Park, including each small experimental block, again removing approximately 95% of the understory vegetation. In our study, we recorded time since fire as time since the 2017 wildfire. In July 2018, we established an additional four blocks of two 200 × 200m plots (4 ha, hereafter referred to as “large” plots) in forest vegetation. Large plots were spaced 300 m apart and blocks at least 2 km apart. Again, we manipulated herbivore grazing pressure using two randomly allocated fencing treatments: (1) open (no fencing) and (2) closed (completely fenced).

2.4 | Data collection

We conducted scat surveys every 2 months from October 2018 to February 2020 in all plots, within two 25 m × 2 m transects (small plots), and four 50 m × 2 m transects (large plots), in which macropod scats were counted and removed from the transect. We used macropod scat counts as an index of herbivore activity, as macropods defecate primarily while feeding (Johnson et al., 1987; Murphy & Bowman, 2007). Note, it was assumed in this study that macropods will digest and deposit all vegetation at a similar rate. We conducted vegetation surveys annually in spring, in all plots. We used five point-intercept transects of 20 m (small plots) and four 50 m transects (large plots) within each plot to record understory plant species (<3 m in height) at 1 m intervals. We used site-level data to calculate four vegetation community measures: species richness, diversity (Simpson's reciprocal index - $1/D$), evenness (Shannon evenness index), and dominance (Berger-Parker index; Magurran, 2013). Using the same point-intercept transects, when a bracken plant was present, we recorded its physical attributes including width (measured parallel with the transect), height to bottom-most frond, top height, and percentage of dead vegetation. We also recorded the number of bracken plants intercepted at the 20 or 50 points along each transect. Both scat and vegetation surveys encompassed the post-wildfire period from September 2018 to February 2020.

2.5 | Data analysis

We analyzed the influence of enclosure fences, time since fire, and the 2012 prescribed burn on: (1) scat counts, (2) plant community measures, and (3) bracken attributes in R (R Core Team, 2016). We fit models from a candidate set of nine models (small plots) and two models (large plots) for each response in a Bayesian framework using the “brms” package (Bürkner, 2017). The models we constructed used all possible combinations of exclusion treatment (open/partial/

closed), time since fire, and prescribed burn (burnt/unburnt) for each response variable (Tables S1–S3). We selected appropriate regression distributions for each variable after testing for assumptions of normality and homogeneity of variance (see Tables S1; Tables 2 and 3; Hanea et al., 2015).

Our response variables were as follows: (1) number of macropod scats, with scat counts being summed at 2-month intervals for small plots to allow for effective analysis of the partial treatments (as every second count was effectively zero); (2) understory plant richness, diversity, evenness, and dominance, with vegetation measures calculated using the “diversityresult” function from the “BiodiversityR” package (Kindt & Kindt, 2019); and (3) bracken width, height to bottom frond, top height, count of individuals, and percentage of dead material. We treated time since fire as a continuous variable for scat surveys, standardized using the “scale” function so that the mean was zero with a standard deviation of 1. We included season (for scat surveys) and block as a fixed effect in each model as well as the random effect of plot. We expected a seasonal effect resulting in reduced herbivore activity in the summer months as macropod defecation rates decrease and scat decay increases (Perry & Braysher, 1986). We selected appropriate priors for each model and the Rhat values were deemed acceptable (all values = 1; Gelman & Rubin, 1992).

The models were fit using Markov chain Monte Carlo methods. We ran four chains, each with 3000 iterations with the first 1000 iterations discarded as burn-in for the sampler. We based our inference on the importance of the hypothesized interactions by selecting the most parsimonious model using lowest weighted Akaike information criterion (WAIC; ≤ 2) and simplest model using the “loo” package (Burnham & Anderson, 2002; Vehtari et al., 2017). We selected AIC over the Bayesian information criterion (BIC) to allow the inclusion of more potential predictors in the model (Aho et al., 2014). We present results for most parsimonious models for macropod scats, vegetation community measures, and bracken morphology from small and large plots.

3 | RESULTS

3.1 | Herbivore activity

Our enclosure treatments altered herbivore activity (Table 1). The best performing model for both small and large plots did not include any interaction terms (Table S1). In both small and large plots, scat counts were highest in the open treatment and lowest in the closed treatments (Figure 4). We found in the small plots that partial treatments had scat counts at intermediate levels between open and closed treatments. Time since fire did not influence herbivore activity in either large or small plots. Furthermore, we detected no effect of the previous prescribed burns in the small plots. Season only affected scat counts within the large plots, with counts being lower in summer months. Notably, scat counts in the large, closed plots were not zero (11.9 ± 6.5 SE), indicating some level of macropod intrusion within the enclosure fences (Figure 4).

Coefficient	Small plots		Large plots	
	Est.	CI (95%)	Est.	CI (95%)
Intercept	2.40	0.99, 3.98	4.33	2.61, 5.60
Herbivory (Partial)	-1.45	-2.38, -0.51		
Herbivory (Closed)	-7.76	-12.91, -5.31	-1.55	-2.72, -0.13
Fire (Burnt)	-0.48	-1.42, 0.43		
Time Since Fire	0.48	-0.09, 1.07	-0.17	-0.46, 0.11
Summer	0.20	-1.11, 1.47	-1.20	-1.98, -0.44
Autumn	-0.01	-1.61, 1.58	-0.75	-1.61, 0.18
Winter	0.50	-0.98, 2.01	0.32	-0.49, 1.11
Block B	0.16	-0.93, 1.24	-0.07	-1.50, 1.60
Block C	0.45	-0.63, 1.51	-1.22	-2.75, 0.47
Block D			-0.13	-1.63, 1.55
N	18 _{plot}		8 _{plot}	
Obsvs.	126		67	
Marginal R ² / Conditional R ²	.474/.492		.589/.629	

Note: Estimates (log-scale) and 95% credible intervals are shown for the most parsimonious models (by WAIC and model simplicity; see Table S1 for model selection table). Rows that are in bold indicate that credible intervals do not overlap zero. Reference states for comparisons in small plots were open, unburnt plots sampled in 2018. Reference states for comparisons in large plots were open plots sampled in 2018.

3.2 | Vegetation community

Three years of vegetation surveys yielded 74 plant species in the understory community. We found herbivore activity and time since fire altered understory community measures in both small and large plots (Figures 5 and 6).

In small plots, the interaction of herbivory and time since fire was included in the selected models for diversity and dominance (Table S1). However, the confidence intervals for both interaction effects overlapped with zero indicating a weak effect (Table 2). Richness, diversity, and evenness measures in small, open plots were lower compared to partially closed and closed plots (Figure 5a–c). As time since fire increased, community measures in small, open plots revealed a decreasing trend for richness, diversity, and evenness. This trend was similar in partially closed plots with 2018 richness, diversity, and evenness measures higher compared to 2019 and 2020 surveys. However, in small, closed plots where macropods were fully excluded, diversity and evenness measures were higher in 2020 compared to 2019. In small plots, there was a greater proportion of dominant species present in open plots compared to partially closed and closed plots (Figure 5d). As time since fire increased, dominance measures in small plots that were open and partially closed steadily increased, with 2018 measures being lower compared to 2019 and 2020. Again, small plots that were macropod free were characterized by an initial increase in dominance measures from 2018 to 2019, but then a decrease in 2020.

In large plots, the interaction of herbivory and time since fire was included in richness, diversity, and evenness models (Table S2). The confidence intervals for the interaction effect for species richness

TABLE 1 Results from Bayesian generalized linear model analyzing whether macropod scats in small (25 m × 25 m) and large (200 m × 200 m) plots are influenced by fire (burnt/unburnt), herbivore access (open/partial/closed), and time since fire

overlapped with zero (Table 3). We observed comparable trends to small plots within large plots, with richness, diversity, and evenness measures being lower in open plots compared to closed (Figure 6a–c). For large, open plots, increasing time since fire negatively affected richness, diversity, and evenness, with the highest measures observed in 2018 which subsequently decreased in 2019 and 2020. A different trend for time since fire was apparent for large, closed plots, whereby measures of richness, diversity, and evenness initially decreased from 2018 to 2019, but then increased in 2020. Dominance measures within large plots were higher in open plots, although confidence intervals overlapped with zero. We found time since fire to influence community dominance with measures being higher in 2019 compared to both 2018 and 2020 (Figure 6d). Large, open plots revealed an increasing trend for dominance as time since fire increased, while dominance in closed plots peaked in 2019 before decreasing the following year.

Comparison of experimental blocks for small plots revealed Block C to have significantly higher measures of species diversity and evenness and lower measures of dominance compared to Blocks A and B (Table 2). Similarly, in the large plots, Block A supported significantly higher species richness, diversity, and evenness compared to the other three blocks (Table 3). However, Block C had the highest values for plant dominance.

3.3 | Dominant plant morphology

During the 3 years of vegetation surveys, we measured 3468 individual *P. esculentum* plants. The interaction effect of herbivore

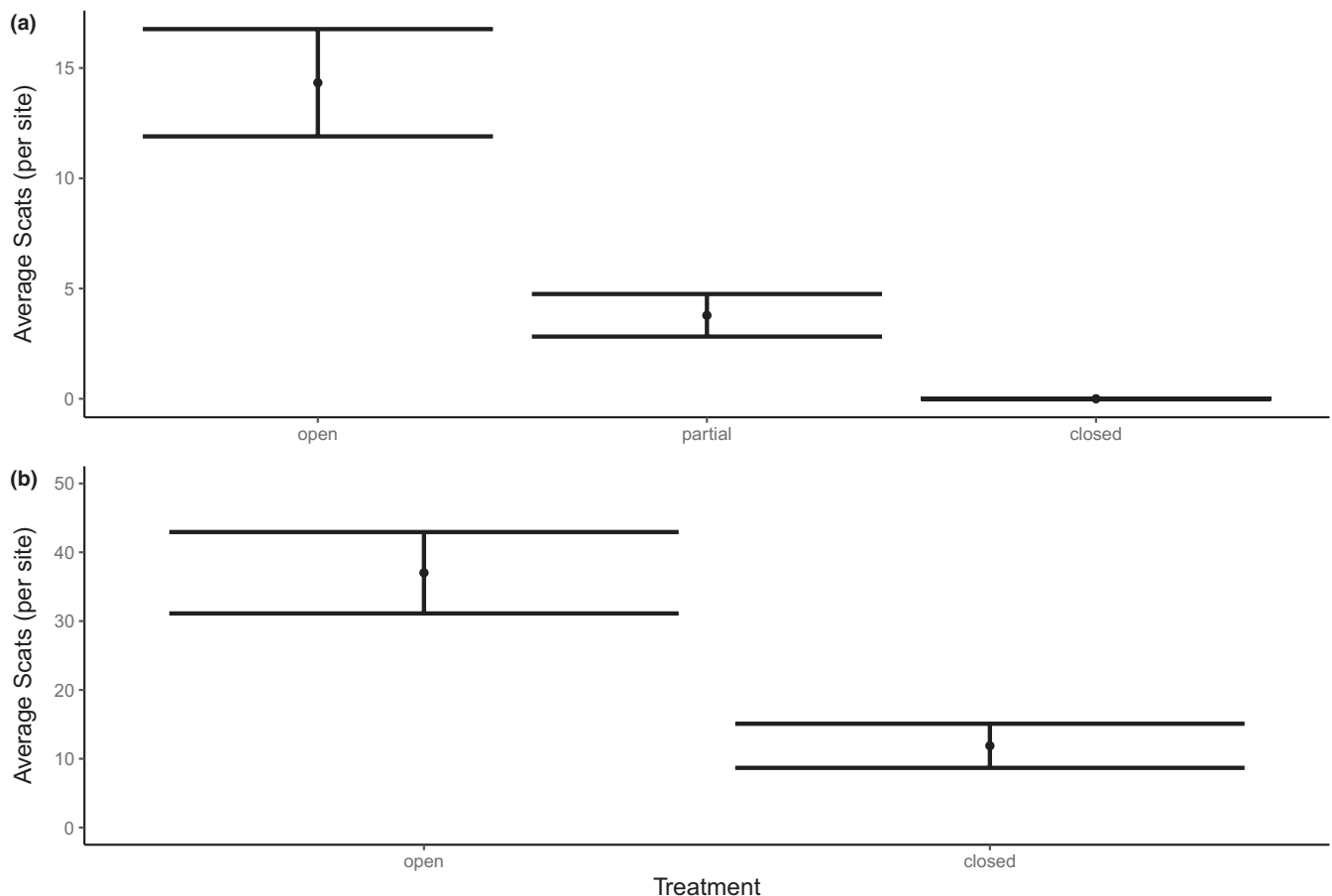


FIGURE 4 The average abundance of macropod scats found in (a) small plots and (b) large plots. Small plots were 25 m × 25 m and had three levels of fencing (open/closed/partial) to alter macropod access. Large plots were 200 m × 200 m and had two level of fencing (open/closed) to alter macropod access. Values are means and 95% credible intervals from plots located in forest vegetation

activity and time since fire was included only in models for bottom height and for the count of individuals for small plots (Table S3). In small plots, the bottom heights of bracken plants were higher within partial and closed plots in 2019 compared to both 2018 and 2020 (Figure 7b). The number of bracken plants within small plots decreased with time since fire and they were more abundant within closed plots in 2019 (Figure 7e; Table 4). Within large plots, we found bracken width to be altered by herbivore activity, with plants in open plots being wider (Figure 8a).

As time since fire increased, bracken plants were wider and taller within both small and large plots in 2019 and 2020 compared to 2018 (Tables 4 and 5). In small plots, the amount of dead material on bracken plants was greater in 2019 and 2020 compared to 2018 (Figure 7d). The number of bracken plants in both small and large plots declined with time since fire (Figures 7e and 8e).

4 | DISCUSSION

The interactive effect of herbivory and fire on vegetation structure, composition, and dynamics is important but often overlooked (Foster et al., 2020). We used a manipulative enclosure experiment

to address the question: How does post-fire herbivory alter understory plant diversity and dominant plant attributes in a coastal eucalypt forest? We found evidence that herbivore exclusion and time since fire, and their interaction altered the understory plant community. Our key findings were that: (1) herbivore activity was reduced by the exclusion fences, but there was no evidence of a time since fire effect; (2) the exclusion of herbivores generally resulted in a richer, more diverse, and more even vegetation community; (3) time since fire was the strongest driver of morphological changes in bracken, which dominated the understory; and (4) the influence of the previous prescribed burns had no apparent legacy effects on vegetation measures.

4.1 | Post-fire herbivore activity

Fencing treatments reduced herbivore activity in partially closed and closed plots, but there was no time since fire effect. A lack of a time since fire effect was surprising as the macropod species present within our study have previously shown a selective preference for recently burnt patches (Foster et al., 2015; Hradsky et al., 2017; Meers & Adams, 2003; Parkins et al., 2019; Southwell

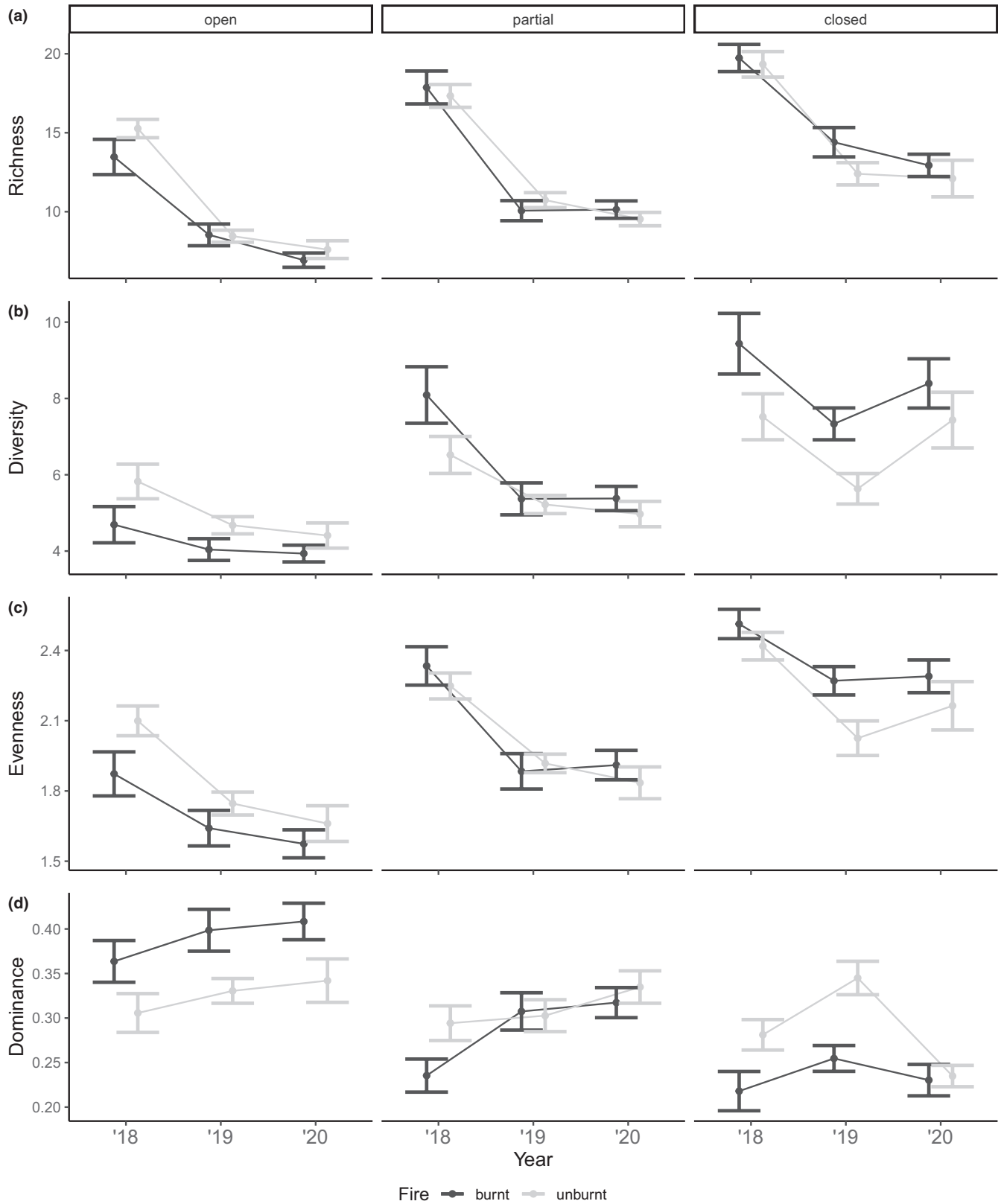


FIGURE 5 Response of plant community measures of (a) species richness, (b) diversity (Simpson's reciprocal index, $1/D$), (c) evenness (Simpson's evenness, $E1/D$) and (d) dominance (Berger-Parker, d) to fire (unburnt/burnt) and herbivory (open/partial/closed) through time. Values are means and 95% credible intervals from small plots (25 m \times 25 m) in forest vegetation

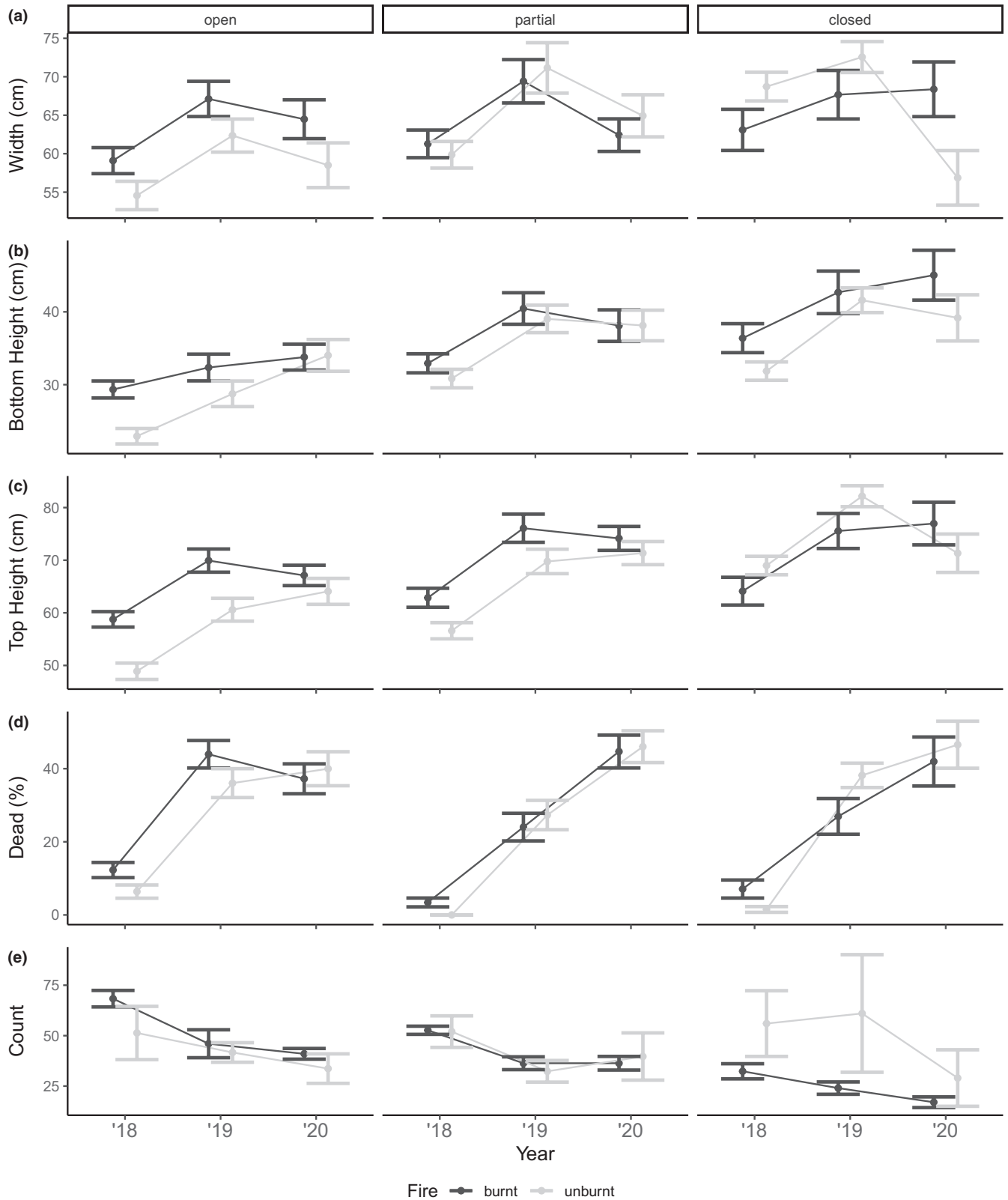


FIGURE 6 Morphological responses of the dominant understory bracken (*Pteridium esculentum*) of (a) width, (b) height to bottom frond, (c) top height, (d) percent of dead material and (e) number of plants to fire (unburnt/burnt) and herbivory (open/partial/closed) through time. Values are means and 95% credible intervals from small plots (25 m × 25 m) located in forest vegetation

TABLE 2 Results from Bayesian generalized linear model analyzing whether plant species richness, diversity (Simpson's reciprocal index, $1/D$), evenness (Simpson's evenness, $E_{1/D}$), and dominance (Berger-Parker, d) in 25 m \times 25 m plots are influenced by fire (burnt/unburnt), herbivore access (open/partial/closed), and year (2018/19/20)

Coefficient	Species Richness		Simpson's diversity ($1/D$)		Shannon's evenness ($E_{1/D}$)		Berger-Parker dominance (d)	
	Est.	CI (95%)	Est.	CI (95%)	Est.	CI (95%)	Est.	CI (95%)
Intercept	2.57	2.39, 2.75	1.5	1.28, 1.71	1.93	1.75, 2.11	0.36	0.30, 0.42
Herbivory (partial)	0.23	0.05, 0.39	0.33	0.11, 0.56	0.25	0.08, 0.43	-0.07	-0.13, -0.01
Herbivory (closed)	0.41	0.24, 0.57	0.49	0.26, 0.71	0.5	0.32, 0.67	-0.08	-0.15, -0.02
Fire (burnt)	0	-0.14, 0.14	0.04	-0.12, 0.21	0.02	-0.12, 0.17	-0.01	-0.05, 0.04
Year (2019)	-0.47	-0.55, -0.40	-0.19	-0.31, -0.06	-0.35	-0.41, -0.28	0.04	0.01, 0.07
Year (2020)	-0.55	-0.63, -0.46	-0.16	-0.28, -0.02	-0.33	-0.39, -0.27	0.03	-0.00, 0.07
Block B	-0.05	-0.22, 0.12	-0.04	-0.23, 0.17	-0.06	-0.24, 0.13	0	-0.06, 0.05
Block C	0.15	-0.02, 0.31	0.28	0.09, 0.48	0.24	0.07, 0.42	-0.07	-0.13, -0.01
Partial: 2019			-0.11	-0.28, 0.06			0	-0.04, 0.05
Closed: 2019			-0.08	-0.25, 0.08			0.02	-0.03, 0.06
Partial: 2020			-0.17	-0.34, 0.01			0.03	-0.02, 0.08
Closed:2020			0.09	-0.08, 0.26			-0.04	-0.09, 0.01
N	18 _{plot}		18 _{plot}		18 _{plot}		18 _{plot}	
Observations	270		270		270		270	
Marginal R^2 / Conditional R^2	.683/.745		.527/.623		.597/.675		.402/.525	

Note: Estimates and 95% credible intervals are shown for the most parsimonious models (by WAIC and model simplicity; see Table S2 for model selection table). Rows that are in bold indicate that credible intervals do not overlap zero. Reference states for comparisons were open, unburnt plots sampled in 2018.

TABLE 3 Results from Bayesian generalized linear model analyzing whether plant species richness, diversity (Simpson's reciprocal index, $1/D$), evenness (Simpson's evenness, $E_{1/D}$), and dominance (Berger-Parker, d) in 200 m \times 200 m plots are influenced by herbivore access (open/partial/closed) and year (2018/19/20)

Coefficient	Species richness		Simpson's diversity ($1/D$)		Shannon's evenness ($E_{1/D}$)		Berger-Parker dominance (d)	
	Est.	CI (95%)	Est.	CI (95%)	Est.	CI (95%)	Est.	CI (95%)
Intercept	3.01	2.81, 3.20	2.87	2.70, 3.02	2.94	2.76, 3.10	0.09	0.06, 0.11
Herbivory (Closed)	0.11	-0.10, 0.32	0.13	-0.03, 0.29	0.12	-0.04, 0.29	-0.01	-0.03, 0.01
Year (2019)	-0.21	-0.40, -0.03	-0.21	-0.33, -0.10	-0.21	-0.33, -0.10	0.02	0.01, 0.04
Year (2020)	-0.3	-0.49, -0.11	-0.26	-0.37, -0.15	-0.29	-0.40, -0.18	0.01	0.00, 0.03
Block B	-0.31	-0.55, -0.09	-0.28	-0.48, -0.10	-0.30	-0.48, -0.09	0.02	-0.01, 0.05
Block C	-0.49	-0.73, -0.25	-0.47	-0.66, -0.28	-0.49	-0.69, -0.28	0.05	0.02, 0.07
Block D	-0.31	-0.54, -0.07	-0.28	-0.45, -0.10	-0.29	-0.50, -0.09	0.02	-0.00, 0.05
Closed:2019	-0.06	-0.32, 0.19	-0.06	-0.23, 0.10	-0.06	-0.22, 0.10		
Closed:2020	0.22	-0.03, 0.47	0.19	0.03, 0.35	0.22	0.05, 0.38		
N	8 _{plot}		8 _{plot}		8 _{plot}		8 _{plot}	
Observations	96		96		96		96	
Marginal R^2 /Conditional R^2	.689/.690		.655/.662		.669/.677		.371/.370	

Note: Estimates and 95% credible intervals are shown for the most parsimonious models (by WAIC and model simplicity; see Table S2 for model selection table). Rows that are in bold indicate that credible intervals do not overlap zero. Reference states for comparisons were open plots sampled in 2018.

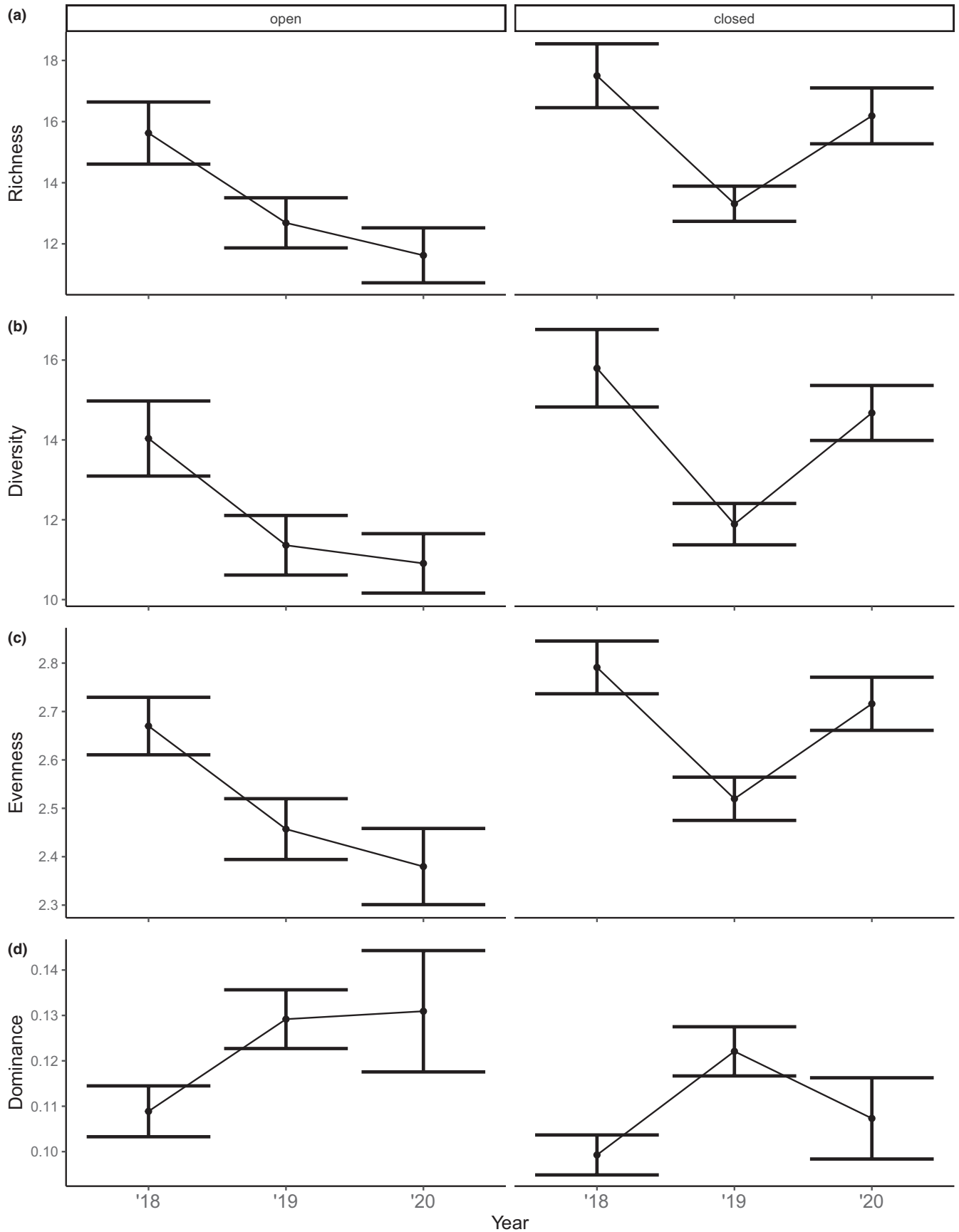


FIGURE 7 Response of plant community measures of (a) species richness, (b) diversity (Simpson's reciprocal index, $1/D$), (c) evenness (Simpson's evenness, $E1/D$) and (d) dominance (Berger- Parker, d) herbivory (open/closed) through time. Values are means and 95% credible intervals from large plots (200 m × 200 m) located in forest vegetation

TABLE 4 Results from Bayesian generalized linear model analyzing whether *Pteridium esculentum* (bracken) morphology including: plant width, height to bottom frond, height to top, percentage of dead material on each plant, and number of plants in 25 m × 25 m plots, are influenced by fire (burnt/unburnt), herbivore access (open/partial/closed), and year (2018/19/20)

Coefficient	Width (cm)		Bottom Height (cm)		Top Height (cm)		Dead (%)		Count	
	Est.	CI (95%)	Est.	CI (95%)	Est.	CI (95%)	Est.	CI (95%)	Est.	CI (95%)
Intercept	60.23	55.30, 65.30	28.01	23.60, 33.11	58.96	52.33, 65.21	0.45	0.07, 0.86	4.12	3.65, 4.59
Herbivory (partial)	0.55	-3.80, 4.80	1.02	-3.00, 5.28	0.24	-4.75, 4.80	-0.27	-0.57, 0.01	-0.12	-0.61, 0.37
Herbivory (closed)	2.03	-2.11, 6.81	2.87	-1.62, 7.70	2.06	-2.73, 8.20	-0.07	-0.40, 0.27	-0.42	-0.91, 0.10
Fire (burnt)	-0.23	-4.20, 3.74	0.77	-3.07, 4.55	0.40	-4.18, 5.24	0.16	-0.09, 0.41	0.11	-0.28, 0.49
Year (2019)	5.74	3.32, 8.28	3.35	0.80, 5.75	10.42	8.17, 12.68	-0.43	-0.76, -0.11	-0.31	-0.47, -0.16
Year (2020)	1.17	-1.23, 3.61	5.68	3.25, 8.28	10.29	7.91, 12.68	-0.59	-0.93, -0.24	-0.47	-0.63, -0.30
Block B	0.68	-3.38, 4.92	0.75	-3.48, 4.86	0.15	-4.59, 5.25	-0.13	-0.42, 0.18	0.04	-0.43, 0.51
Block C	1.58	-2.41, 6.09	3.17	-1.19, 8.36	1.11	-3.53, 6.34	-0.29	-0.65, 0.05	-0.42	-0.88, 0.04
Partial: 2019			3.54	0.26, 7.27					-0.11	-0.35, 0.12
Closed: 2019			4.26	0.93, 8.16					0.27	0.04, 0.50
Partial: 2020			0.09	-3.09, 3.31					0.15	-0.09, 0.38
Closed: 2020			1.28	-2.24, 5.19					0.04	-0.23, 0.32
N	18 _{plot}		18 _{plot}		18 _{plot}		18 _{plot}		18 _{plot}	
Observations	2210		2210		2210		2210		53	
Marginal R ² / Conditional R ²	.018/.061		.046/.112		.053/.189		.001/.001		.084/.733	

Note: Estimates and 95% credible intervals are shown for the most parsimonious models (by WAIC and model simplicity; see Table S2 for model selection table). Rows that are in bold indicate that credible intervals do not overlap zero. Reference states for comparisons were open, unburnt plots sampled in 2018.

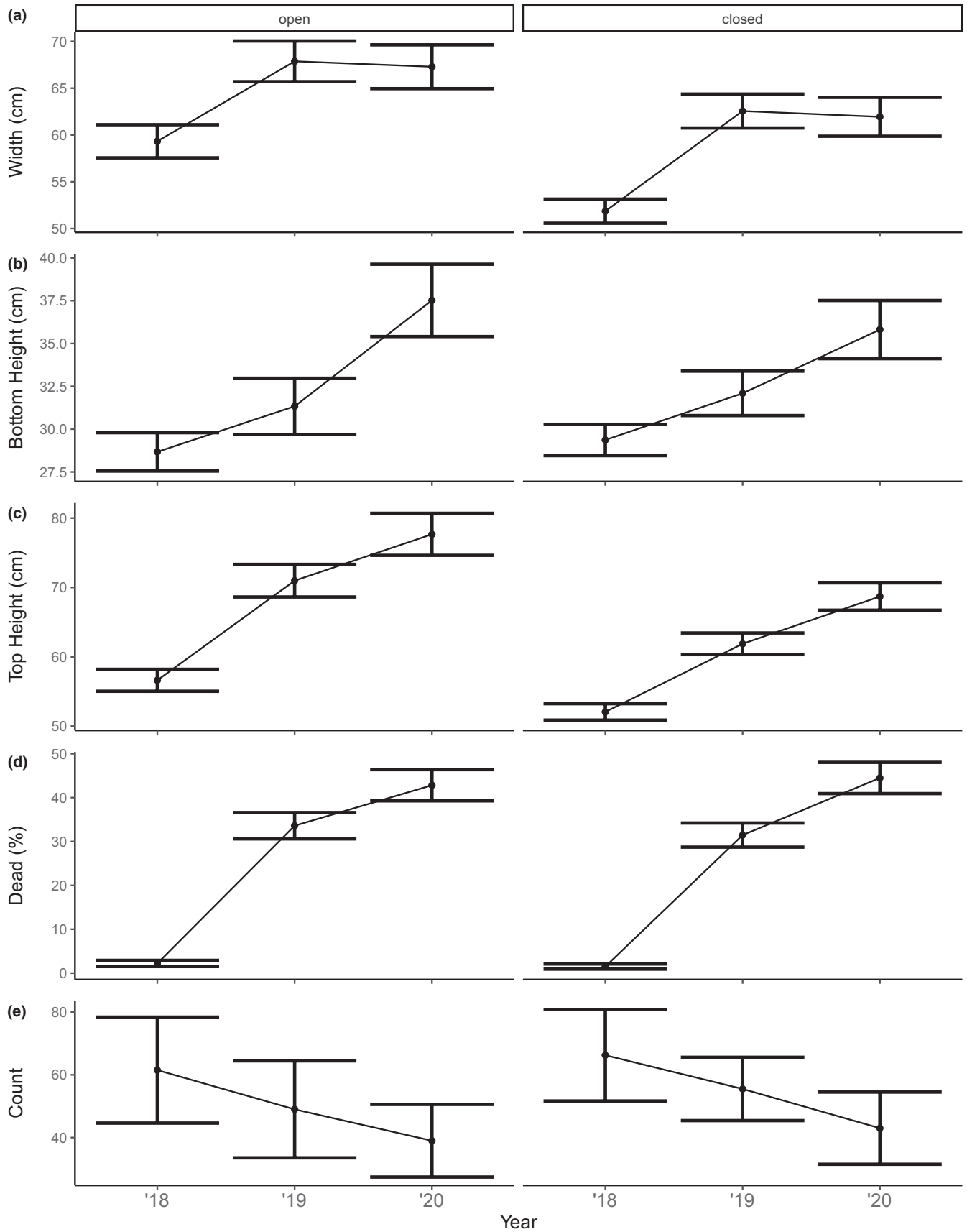


FIGURE 8 Morphological responses of the dominant understory bracken (*Pteridium esculentum*) of (a) width, (b) height to bottom frond, (c) top height, (d) percent of dead material and (e) number of plants to herbivory (open/closed) through time. Values are means and 95% credible intervals from large plots (200 m × 200 m) located in forest vegetation

TABLE 5 Results from Bayesian generalized linear model analyzing whether *Pteridium esculentum* (bracken) morphology including: plant width, height to bottom frond, height to top, percentage of dead material on each plant, and number of plants in 200 m × 200 m plots, are influenced by herbivore access (open/partial/closed) and year (2018/19/20)

Coefficient	Width (cm)		Bottom Height (cm)		Top Height (cm)		Dead (%)		Count	
	Est.	CI (95%)	Est.	CI (95%)	Est.	CI (95%)	Est.	CI (95%)	Est.	CI (95%)
Intercept	51.33	45.37, 56.53	25.73	20.58, 30.33	50.00	42.32, 57.03	-0.22	-0.85, 0.43	3.68	2.95, 4.41
Herbivory (closed)	-5.67	-9.85, -0.48	0.22	-3.45, 4.58	-5.22	-11.41, 1.36	-0.03	-0.44, 0.37	0.17	-0.47, 0.85
Year (2019)	9.62	6.22, 13.19	2.66	0.08, 5.23	11.66	8.42, 15.04	0.19	-0.27, 0.64	-0.2	-0.33, -0.07
Year (2020)	8.65	4.86, 12.43	7.33	4.77, 10.07	18.15	14.60, 21.79	0.39	-0.07, 0.88	-0.44	-0.59, -0.31
Block B	14.41	9.00, 20.84	8.18	3.09, 13.40	17.07	8.65, 26.01	-0.17	-0.74, 0.39	0.76	-0.14, 1.66
Block C	2.27	-4.65, 8.94	2.05	-3.74, 7.86	-0.68	-9.68, 8.56	0.05	-0.58, 0.65	-0.26	-1.17, 0.72
Block D	4.48	-1.30, 10.75	-0.45	-5.87, 4.86	2.31	-6.48, 10.98	-0.06	-0.64, 0.50	0.64	-0.23, 1.52
N	δ_{plot}		δ_{plot}		δ_{plot}		δ_{plot}		δ_{plot}	
Observations	1257		1257		1257		1257		24	
Marginal R^2 / Conditional R^2	.087/.090		.064/.065		.162/.175		.001/.001		.765/.767	

Note: Estimates and 95% credible intervals are shown for the most parsimonious models (by WAIC and model simplicity; see Table S2 for model selection table). Rows that are in bold indicate that credible intervals do not overlap zero. Reference states for comparisons were open plots sampled in 2018.

& Jarman, 1987). This result might be explained by the large size of the 2017 wildfire (1600 ha) compared with other studies that focused on smaller burns (31 ha, Southwell & Jarman, 1987; 1 ha, Meers & Adams, 2003; 226 ha, Dexter et al., 2013; 0.25 ha, Foster et al., 2015; and 714 ha, Hradsky et al., 2017). Macropods may be selecting for burnt patches within our study area but, due to the large size of the 2017 wildfire, increased occurrence may have been distributed over a large area, resulting in only a nuanced effect at our study plots. If fire size is impacting herbivore response, future prescribed burning practices may need to accommodate local herbivore density. To confirm this, more investigations would be required to determine the relationship between fire size and herbivore density.

4.2 | Shifting vegetation communities

Knowledge of modifications to vegetation communities by large herbivores within fire-prone ecosystems is increasing (Crowther et al., 2016; Tuft et al., 2012). We found that post-fire herbivory reduced plant species richness, diversity, and evenness and increased plant dominance measures. This was expected as foraging pressure by large herbivores has been shown to decrease diversity and increase species dominance in other ecosystems (Bakker et al., 2006; Connor et al., 2021; Tuft et al., 2012). This finding confirms that increased foraging pressure from large herbivores following a wildfire also results in a more depauperate vegetation community, consistent with previous studies of smaller prescribed/experimental burns (Foster et al., 2015; Parkins et al., 2019).

Our study revealed that the richest and most diverse plant communities occurred directly after fire. These findings are consistent with earlier studies indicating richness decreases with increasing time since fire (Foster et al., 2018; Ross et al., 2002). Higher species richness immediately after fire was expected in eucalypt forest understory as fire typically stimulates new growth and the germination of seedlings, and many species can re-sprout after fire (Dixon et al., 2018). Furthermore, within large plots, we observed that with increasing time since fire, herbivore exclusion promoted a more diverse and more even community. Preventing large herbivores from accessing burnt patches may therefore promote a richer and more diverse understory.

4.3 | Morphology of bracken

The increase in *P. esculentum* dominance within Booderee National Park has been an ongoing concern for resource managers (Dexter et al., 2013). However, this study did not uncover evidence of differences in bracken morphology with altered herbivore activity. This was surprising as we expected this unpalatable plant species to thrive in plots accessible to macropods where increased foraging of palatable plants would reduce interspecies competition with bracken (Archibald & Hempson, 2016). Previous research indicated

high plant diversity in understory forest communities can positively affect the biomass and survivability of all plants (Cook-Patton et al., 2014). It is possible that bracken is experiencing a win-win scenario in post-fire landscapes, whether browsed or unbrowsed. Increased herbivory may be reducing interspecies competition by decreasing species diversity, promoting the dominance of bracken. Conversely, reduced herbivory may be accommodating positive interspecific interactions from increased species diversity, resulting in healthier bracken plants.

Our findings indicate that increasing time since fire led to the reduced abundance and altered physical attributes of bracken plants. The amount of dead material on bracken increased with increasing time since fire in small plots. This dead material may contribute directly to fire risk by increasing potential fire behavior (Cheney et al., 2012). However, no changes were observed within the large plots. Potential differences in our results may be due to the difference between time since exclosure (9 years vs. 3 years) or the time to establishing the larger manipulative experiment following the wildfire in 2017 (10 months). The latter effect may have allowed macropods to modify the understory before the fences affected herbivore activity, reducing the contrast between plots. Extending the survey to future years may reveal important findings as dead biomass of bracken usually peaks at 4 to 7 years following disturbance (Bray, 1991; Parkins et al., 2019). Longer-term datasets (>3 years) may be required to document post-fire bracken growth within forested communities.

4.4 | Fire history

We found no evidence that previous prescribed burns in 2012 influenced herbivore activity, vegetation community measures, or bracken morphology following the 2017 wildfire. This was surprising as repeated fires at short intervals (5 years in our study) have been observed to drive large herbivores to suppress palatable plants, locally decreasing plant diversity, while promoting the dominance of unpalatable, fire-resistant plants like bracken (Archibald & Hempson, 2016; Pietrzykowski et al., 2003; Wyse et al., 2016). This may be because of strong effects of the 2017 fire and the herbivore masked any remaining effects on vegetation of the 2012 fires. It is possible that effects of the short fire interval may become apparent with increasing time since fire (i.e., reduced effect of 2017 fire), where impacts on slower growing species, and in particular obligate seeding shrub species, become easier to detect.

5 | CONCLUSION

Our study highlights the impacts of post-fire herbivory on vegetation communities. Post-fire herbivory decreases richness, diversity, and evenness measures and increases the dominance of few species leading to a more depauperate vegetation community. Future management of forest ecosystems should account for local populations

of large herbivores. Increased understory plant diversity may be achieved by reducing herbivore numbers or preventing access to burnt patches following fire. Conversely, where herbivore impacts align with management goals (e.g., control of palatable weeds, or reducing fuel biomass for fire hazard reduction), small prescribed burns may be effective in concentrating foraging pressure by herbivores in target areas.

ACKNOWLEDGEMENTS

We acknowledge the traditional owners of the land, the Wreck Bay Indigenous Community, on which our research was conducted. We thank the Wreck Bay Aboriginal Community Council and Parks Australia for supporting this project and assisting with the construction of the enclosure fences. This research was supported by the Australian Research Council, Parks Australia, and the Australian Department of Defence as part of an ARC Linkage Project (LP170100152). We thank the staff of Booderee National Park who conducted prescribed burns. We would also like to thank those who assisted in the construction of enclosures and data collection: Dylan Cook, Ruth Hollows, Milou Hofman, Sophia Cain, Sean Evans, and Bud Hopkins.

CONFLICTS OF INTEREST

The authors declare no conflicts of interest.

AUTHOR CONTRIBUTIONS

Matthew Chard: Conceptualization (lead); Data curation (lead); Formal analysis (lead); Investigation (lead); Methodology (lead); Project administration (lead); Resources (lead); Validation (lead); Visualization (lead); Writing – original draft (lead); Writing – review & editing (lead). **Claire N Foster:** Conceptualization (supporting); Formal analysis (supporting); Funding acquisition (supporting); Investigation (supporting); Methodology (supporting); Supervision (lead); Writing – review & editing (equal). **David B Lindenmayer:** Conceptualization (supporting); Funding acquisition (supporting); Resources (equal); Supervision (equal); Visualization (supporting); Writing – review & editing (equal). **Geoffrey J Cary:** Conceptualization (supporting); Methodology (supporting); Supervision (supporting); Writing – review & editing (equal). **Christopher MacGregor:** Data curation (supporting); Investigation (supporting); Project administration (supporting); Resources (supporting); Supervision (supporting); Writing – review & editing (supporting). **Wade Blanchard:** Formal analysis (supporting); Validation (supporting); Writing – review & editing (supporting).

OPEN RESEARCH BADGES



This article has earned an Open Data Badge for making publicly available the digitally-shareable data necessary to reproduce the reported results. The data is available at <https://datadryad.org/stash/share/PRjYHam6K3TZZ-9-ZDOc96p1qNzDOH8yXz196j1RLul>.

DATA AVAILABILITY STATEMENT

The data that support the findings of this study are openly available in Dryad using the digital object identifier (DOI): <https://doi.org/10.5061/dryad.dr7sqvb0r>.

ORCID

Matthew Chard <https://orcid.org/0000-0003-0800-2601>

David B. Lindenmayer <https://orcid.org/0000-0002-4766-4088>

REFERENCES

- Aho, K., Derryberry, D., & Peterson, T. (2014). Model selection for ecologists: the worldviews of AIC and BIC. *Ecology*, 95(3), 631–636. <https://doi.org/10.1890/13-1452.1>
- Allred, B. W., Fuhlendorf, S. D., Engle, D. M., & Elmore, R. D. (2011). Ungulate preference for burned patches reveals strength of fire-grazing interaction. *Ecology and Evolution*, 1(2), 132–144. <https://doi.org/10.1002/ece3.12>
- Archibald, S., & Hempson, G. P. (2016). Competing consumers: contrasting the patterns and impacts of fire and mammalian herbivory in Africa. *Philosophical Transactions of the Royal Society B: Biological Sciences*, 371(1703), 20150309. <https://doi.org/10.1098/rstb.2015.0309>
- Augustine, D. J., & McNaughton, S. J. (1998). Ungulate effects on the functional species composition of plant communities: herbivore selectivity and plant tolerance. *The Journal of Wildlife Management*, 62(4), 1165. <https://doi.org/10.2307/3801981>
- Bakker, E. S., Gill, J. L., Johnson, C. N., Vera, F. W. M., Sandom, C. J., Asner, G. P., & Svenning, J. C. (2016). Combining paleo-data and modern enclosure experiments to assess the impact of megafauna extinctions on woody vegetation. *Proceedings of the National Academy of Sciences of the United States of America*, 113(4), 847–855. <https://doi.org/10.1073/pnas.1502545112>
- Bakker, E. S., Ritchie, M. E., Olff, H., Milchunas, D. G., & Knops, J. M. H. (2006). Herbivore impact on grassland plant diversity depends on habitat productivity and herbivore size. *Ecology Letters*, 9(7), 780–788. <https://doi.org/10.1111/j.1461-0248.2006.00925.x>
- Bond, W. J., & Keeley, J. E. (2005). Fire as a global “herbivore”: The ecology and evolution of flammable ecosystems. *Trends in Ecology & Evolution*, 20(7), 387–394. <https://doi.org/10.1016/j.TREE.2005.04.025>
- Bowman, D. M. J. S., Balch, J. K., Artaxo, P., Bond, W. J., Carlson, J. M., Cochrane, M. A., D’Antonio, C. M., DeFries, R. S., Doyle, J. C., Harrison, S. P., Johnston, F. H., Keeley, J. E., Krawchuk, M. A., Kull, C. A., Marston, J. B., Moritz, M. A., Prentice, I. C., Roos, C. I., Scott, A. C., ... Pyne, S. J. (2009). Fire in the earth system. *Science*, 324, 481–484. <https://doi.org/10.1126/science.1163886>
- Bray, R. J. (1991). Growth, biomass, and productivity of a bracken (*Pteridium esculentum*) infested pasture in Marlborough Sounds, New Zealand. *New Zealand Journal of Botany*, 29(2), 169–176. <https://doi.org/10.1080/0028825X.1991.10416719>
- Brunton, E. A., Srivastava, S. K., & Burnett, S. (2018). Spatial ecology of an urban eastern grey kangaroo (*Macropus giganteus*) population: Local decline driven by kangaroo–vehicle collisions. *Wildlife Research*, 45(8), 685–695. <https://doi.org/10.1071/WR18077>
- Bürkner, P. C. (2017). brms: An R package for Bayesian multilevel models using Stan. *Journal of Statistical Software*, 80(1), 1–28. <https://doi.org/10.18637/jss.v080.i01>
- Burnham, K. P., & Anderson, D. R. (2002). A practical information-theoretic approach. In *Model selection and multimodel inference* (vol. 2, pp. 70–71).
- Chard, M., Foster, C. N., Lindenmayer, D. B., Cary, G. J., MacGregor, C. I., & Blanchard, W. (2021). Time since fire influences macropod

- occurrence in a fire-prone coastal ecosystem. *Austral Ecology*. <https://doi.org/10.1111/aec.13127>
- Cheney, N. P., Gould, J. S., McCaw, W. L., & Anderson, W. R. (2012). Predicting fire behaviour in dry eucalypt forest in southern Australia. *Forest Ecology and Management*, 280, 120–131. <https://doi.org/10.1016/j.foreco.2012.06.012>
- Connor, S. E., Araújo, J., Boski, T., Gomes, A., Gomes, S. D., Leira, M., Freitas, M. D. C., Andrade, C., Morales-Molino, C., Franco-Múgica, F., Akindola, R. B., & Vanni re, B. (2021). Drought, fire and grazing precursors to large-scale pine forest decline. *Diversity and Distributions*, 27(7), 1138–1151. <https://doi.org/10.1111/ddi.13261>
- Cook-Patton, S. C., LaForgia, M., & Parker, J. D. (2014). Positive interactions between herbivores and plant diversity shape forest regeneration. *Proceedings of the Royal Society B: Biological Sciences*, 281(1783), 20140261. <https://doi.org/10.1098/rspb.2014.0261>
- Crowther, M. S., Ortac, G., Pedersen, S., & McArthur, C. (2016). Interactions between fire and introduced deer herbivory on coastal heath vegetation. *Austral Ecology*, 41(6), 604–612. <https://doi.org/10.1111/aec.12349>
- Danell, K., Bergstr m, R., Duncan, P., & Pastor, J. (Eds.) (2006). *Large herbivore ecology, ecosystem dynamics, and conservation*. Cambridge University Press.
- Dexter, N., Hudson, M., James, S., MacGregor, C., & Lindenmayer, D. B. (2013). Unintended consequences of invasive predator control in an Australian forest: Overabundant wallabies and vegetation change. *PLoS One*, 8(8), e69087. <https://doi.org/10.1371/journal.pone.0069087>
- Di Stefano, J., & Newell, G. R. (2008). Diet selection by the swamp wallaby (*Wallabia bicolor*): feeding strategies under conditions of changed food availability. *Journal of Mammalogy*, 89(6), 1540–1549. <https://doi.org/10.1644/07-MAMM-A-193.1>
- Dixon, K. M., Cary, G. J., Worboys, G. L., Seddon, J., & Gibbons, P. (2018). A comparison of fuel hazard in recently burned and long-unburned forests and woodlands. *International Journal of Wildland Fire*, 27(9), 609. <https://doi.org/10.1071/WF18037>
- Forbes, E. S., Cushman, J. H., Burkepile, D. E., Young, T. P., Klope, M., & Young, H. S. (2019). Synthesizing the effects of large, wild herbivore exclusion on ecosystem function. *Functional ecology*, 33(9), pp. 1597–1610.
- Foster, C. N., Banks, S. C., Cary, G. J., Johnson, C. N., Lindenmayer, D. B., & Valentine, L. E. (2020). Animals as agents in fire regimes. *Trends in Ecology & Evolution*, 35(4), 346–356. <https://doi.org/10.1016/j.tree.2020.01.002>
- Foster, C. N., Barton, P. S., MacGregor, C. I., Catford, J. A., Blanchard, W., & Lindenmayer, D. B. (2018). Effects of fire regime on plant species richness and composition differ among forest, woodland and heath vegetation. *Applied Vegetation Science*, 21(1), 132–143. <https://doi.org/10.1111/avsc.12345>
- Foster, C. N., Barton, P. S., Sato, C. F., Macgregor, C. I., & Lindenmayer, D. B. (2015). Synergistic interactions between fire and browsing drive plant diversity in a forest understory. *Journal of Vegetation Science*, 26(6), 1112–1123. <https://doi.org/10.1111/jvs.12311>
- Foster, C. N., Barton, P. S., Sato, C. F., Wood, J. T., MacGregor, C. I., & Longo, S. (2016). Herbivory and fire interact to affect forest understory habitat, but not its use by small vertebrates. *Animal Conservation*, 19(1), 15–25. <https://doi.org/10.1111/acv.12210>
- Fuhlendorf, S. D., Townsend, D. E., Elmore, R. D., & Engle, D. M. (2010). Pyric-herbivory to promote rangeland heterogeneity: evidence from small mammal communities. *Rangeland Ecology & Management*, 63(6), 670–678. <https://doi.org/10.2111/REM-D-10-00044.1>
- Furlaud, J. M., Williamson, G. J., & Bowman, D. M. J. S. (2018). Simulating the effectiveness of prescribed burning at altering wildfire behaviour in Tasmania, Australia. *International Journal of Wildland Fire*, 27(1), 15–28. <https://doi.org/10.1071/WF17061>
- Gelman, A., & Rubin, D. B. (1992). Inference from iterative simulation using multiple sequences. *Statistical Science*, 7(4), 457–472. <https://doi.org/10.1214/ss/1177011136>
- Hanea, A., Morales Napoles, O., & Ababei, D. (2015). Non-parametric Bayesian networks: Improving theory and reviewing applications. *Reliability Engineering and System Safety*, 144, 265–284. <https://doi.org/10.1016/j.res.2015.07.027>
- Hradsky, B. A., Mildwaters, C., Ritchie, E. G., Christie, F., & Di Stefano, J. (2017). Responses of invasive predators and native prey to a prescribed forest fire. *Journal of Mammalogy*, 98(3), 835–847. <https://doi.org/10.1093/jmammal/gyx010>
- Johnson, C. N., Jarman, P. J., & Southwell, C. J. (1987). Macropod studies at Wallaby Creek. 5. Patterns of defecation by eastern gray kangaroos and red-necked wallabies. *Wildlife Research*, 14(2), 133–138. <https://doi.org/10.1071/WR9870133>
- Kindt, R., & Kindt, M. R. (2019). *Package "BiodiversityR", Package for community ecology and suitability analysis* (pp. 2–11).
- Leroux, S. J., Wiersma, Y. F., & Vander Wal, E. (2020). Herbivore impacts on carbon cycling in boreal forests. *Trends in Ecology & Evolution*, 35(11), 1001–1010. <https://doi.org/10.1016/j.tree.2020.07.009>
- Lindenmayer, D. B., Blanchard, W., Macgregor, C. I., Barton, P. S., Banks, S. C., Crane, M., Michael, D., Okada, S., Berry, L., Florance, D., & Gill, A. M. (2016). Temporal trends in mammal responses to fire reveals the complex effects of fire regime attributes. *Ecological Applications*, 26(2), 557–573. <https://doi.org/10.1890/15-0575>
- Magurran, A. E. (2013). *Measuring biological diversity*. John Wiley & Sons.
- Meers, B. T., & Adams, R. (2003). The impact of grazing by eastern grey kangaroos (*Macropus giganteus*) on vegetation recovery after fire at Reef Hills Regional Park, Victoria. *Ecological Management and Restoration*, 4(2), 126–132. <https://doi.org/10.1046/j.1442-8903.2003.00147.x>
- Murphy, B. P., & Bowman, D. M. J. S. (2007). The interdependence of fire, grass, kangaroos and Australian Aborigines: A case study from central Arnhem Land, northern Australia. *Journal of Biogeography*, 34(2), 237–250. <https://doi.org/10.1111/j.1365-2699.2006.01591.x>
- Nuttle, T., Royo, A. A., Adams, M. B., & Carson, W. P. (2013). Historic disturbance regimes promote tree diversity only under low browsing regimes in eastern deciduous forest. *Ecological Monographs*, 83(1), 3–17. <https://doi.org/10.1890/11-2263.1>
- Parkins, K., Scott, A., Di Stefano, J., Swan, M., Sitters, H., & York, A. (2019). Habitat use at fire edges: Does animal activity follow temporal patterns of habitat change? *Forest Ecology and Management*, 451, 117343. <https://doi.org/10.1016/j.foreco.2019.05.013>
- Perry, R. J., & Braysher, M. L. (1986). A technique for estimating the numbers of eastern gray kangaroos, *Macropus giganteus*, grazing a given area of pasture. *Wildlife Research*, 13(3), 335–338. <https://doi.org/10.1071/WR9860335>
- Persson, I. L., Danell, K., & Bergstr m, R. (2000). Disturbance by large herbivores in boreal forests with special reference to moose. *Annales Zoologici Fennici*, 37(4), 251–263.
- Pietrzykowski, E., McArthur, C., Fitzgerald, H., & Goodwin, A. N. (2003). Influence of patch characteristics on browsing of tree seedlings by mammalian herbivores. *Journal of Applied Ecology*, 40(3), 458–469. <https://doi.org/10.1046/j.1365-2664.2003.00809.x>
- R Core Team (2016). *R: A language and environment for statistical computing*. 2015. R Foundation for Statistical Computing.
- Ross, K. A., Fox, B. J., & Fox, M. D. (2002). Changes to plant species richness in forest fragments: fragment age, disturbance and fire history may be as important as area. *Journal of Biogeography*, 29(5–6), 749–765. <https://doi.org/10.1046/j.1365-2699.2002.00722.x>
- Royo, A. A., & Carson, W. P. (2006). On the formation of dense understory layers in forests worldwide: consequences and implications for forest dynamics, biodiversity, and succession. *Canadian Journal of Forest Research*, 36(6), 1345–1362. <https://doi.org/10.1139/x06-025>
- Southwell, C. J., & Jarman, P. J. (1987). Macropod studies at wallaby creek. 3. The effect of fire on pasture utilization by macropodids

- and cattle. *Wildlife Research*, 14(2), 117. <https://doi.org/10.1071/WR9870117>
- Taws, N. (1997). *Vegetation survey and mapping of Jervis Bay Territory*. Taws Botanical Research.
- Tolhurst, K. G., & Turvey, N. D. (1992). Effects of bracken (*Pteridium esculentum* (forst. f.) cockayne) on eucalypt regeneration in west-central Victoria. *Forest Ecology and Management*, 54(1–4), 45–67. [https://doi.org/10.1016/0378-1127\(92\)90004-5](https://doi.org/10.1016/0378-1127(92)90004-5)
- Tuft, K. D., Crowther, M. S., & McArthur, C. (2012). Fire and grazing influence food resources of an endangered rock-wallaby. *Wildlife Research*, 39(5), 436. <https://doi.org/10.1071/WR11208>
- Vehtari, A., Gelman, A., & Gabry, J. (2017). Practical Bayesian model evaluation using leave-one-out cross-validation and WAIC. *Statistics and Computing*, 27(5), 1413–1432. <https://doi.org/10.1007/s1122-016-9696-4>
- Wyse, S. V., Perry, G. L. W., O'Connell, D. M., Holland, P. S., Wright, M. J., Hosted, C. L., Whitelock, S. L., Geary, I. J., Maurin, K. J. L., & Curran, T. J. (2016). A quantitative assessment of shoot flammability for 60 tree and shrub species supports rankings based on expert opinion. *International Journal of Wildland Fire*, 25(4), 466. <https://doi.org/10.1071/WF15047>
- Zylstra, P., Bradstock, R. A., Bedward, M., Penman, T. D., Doherty, M. D., Weber, R. O., Gill, A. M., & Cary, G. J. (2016). Biophysical mechanistic modelling quantifies the effects of plant traits on fire severity: Species, not surface fuel loads, determine flame dimensions in eucalypt forests. *PLoS One*, 11(8), 1–24. <https://doi.org/10.1371/journal.pone.0160715>

SUPPORTING INFORMATION

Additional supporting information may be found in the online version of the article at the publisher's website.

How to cite this article: Chard, M., Foster, C. N., Lindenmayer, D. B., Cary, G. J., MacGregor, C. I., & Blanchard, W. (2022). Post-fire pickings: Large herbivores alter understory vegetation communities in a coastal eucalypt forest. *Ecology and Evolution*, 12, e8828. <https://doi.org/10.1002/ece3.8828>