



# Reversal of Ischemic Cardiomyopathy with Sca-1<sup>+</sup> Stem Cells Modified with Multiple Growth Factors

Ning Li<sup>1</sup>, Zeeshan Pasha<sup>2</sup>, Muhammad Ashraf<sup>2\*</sup>

**1** Department of Physiology and Cell Biology, The Ohio State University, Columbus, Ohio, United States of America, **2** Department of Pharmacology, University of Illinois at Chicago, Chicago, Illinois, United States of America

## Abstract

**Background:** We hypothesized that bone marrow derived Sca-1<sup>+</sup> stem cells (BM Sca-1<sup>+</sup>) transduced with multiple therapeutic cytokines with diverse effects will induce faster angiomyogenic differentiation in the infarcted myocardium.

**Methods and Results:** BM Sca-1<sup>+</sup> were purified from transgenic male mice expressing GFP. Plasmids encoding for select quartet of growth factors, i.e., human IGF-1, VEGF, SDF-1 $\alpha$  and HGF were prepared and used for genetic modification of Sca-1<sup>+</sup> cells (G<sup>F</sup>Sca-1<sup>+</sup>). Scramble transfected cells (S<sup>C</sup>Sca-1<sup>+</sup>) were used as a control. RT-PCR and western blotting showed significantly higher expression of the growth factors in G<sup>F</sup>Sca-1<sup>+</sup>. Besides the quartet of the therapeutic growth factors, PCR based growth factor array showed upregulation of multiple angiogenic and prosurvival factors such as Ang-1, Ang-2, MMP9, Cx43, BMP2, BMP5, FGF2, and NGF in G<sup>F</sup>Sca-1<sup>+</sup> ( $p < 0.01$  vs S<sup>C</sup>Sca-1<sup>+</sup>). LDH and TUNEL assays showed enhanced survival of G<sup>F</sup>Sca-1<sup>+</sup> under lethal anoxia ( $p < 0.01$  vs S<sup>C</sup>Sca-1<sup>+</sup>). MTS assay showed significant increased cell proliferation in G<sup>F</sup>Sca-1<sup>+</sup> ( $p < 0.05$  vs S<sup>C</sup>Sca-1<sup>+</sup>). For in vivo study, female mice were grouped to receive the intramyocardial injection of 15  $\mu$ l DMEM without cells (group-1) or containing  $2.5 \times 10^5$  S<sup>C</sup>Sca-1<sup>+</sup> (group-2) or G<sup>F</sup>Sca-1<sup>+</sup> (group-3) immediately after coronary artery ligation. As indicated by Sry gene, a higher survival of G<sup>F</sup>Sca-1<sup>+</sup> in group-3 on day4 (2.3 fold higher vs group-2) was observed with massive mobilization of stem and progenitor cells (cKit<sup>+</sup>, Mdr1<sup>+</sup>, Cxcr4<sup>+</sup> cells). Heart tissue sections immunostained for actinin and Cx43 at 4 weeks post engraftment showed extensive myofiber formation and expression of gap junctions. Immunostaining for vWF showed increased blood vessel density in both peri-infarct and infarct regions in group-3. Infarct size was attenuated and the global heart function was improved in group-3 as compared to group-2.

**Conclusions:** Administration of BM Sca-1<sup>+</sup> transduced with multiple genes is a novel approach to treat infarcted heart for its regeneration.

**Citation:** Li N, Pasha Z, Ashraf M (2014) Reversal of Ischemic Cardiomyopathy with Sca-1<sup>+</sup> Stem Cells Modified with Multiple Growth Factors. PLoS ONE 9(4): e93645. doi:10.1371/journal.pone.0093645

**Editor:** Toru Hosoda, Tokai University, Japan

**Received:** July 1, 2013; **Accepted:** March 9, 2014; **Published:** April 4, 2014

**Copyright:** © 2014 Li et al. This is an open-access article distributed under the terms of the Creative Commons Attribution License, which permits unrestricted use, distribution, and reproduction in any medium, provided the original author and source are credited.

**Funding:** This work was supported by NIH grants HL-087246(MA). The funders had no role in study design, data collection and analysis, decision to publish, or preparation of the manuscript.

**Competing Interests:** The authors have declared that no competing interests exist.

\* E-mail: ashrafm2@uic.edu

## Introduction

Stem cell based cell therapy offers a potentially therapeutic option for ischemic heart disease [1]. Bone marrow-derived stem cells (BMSCs) have been widely studied for use in cardiac repair due to their favorable properties including multipotency, transdifferentiation, immunomodulation and free from the risks of teratoma formation. Promising results have been reported in preclinical and clinical studies [2–5]. The results show that BMSCs not only differentiate into cardiomyocytes and vascular cells, but also secrete multiple growth factors and cytokines which may mediate endogenous regeneration via activation of resident cardiac stem cells and neovascularization, and reduce apoptosis [6]. Nevertheless, current evidence supports that efficacy of BMSC was limited due to the poor viability and massive death of the engrafted cells in the infarcted myocardium. The heart cell therapy with BMSC to compensate for loss of functional cardiomyocytes during the ischemic episode may be less meaningful without restoration of the regional blood flow in the ischemic myocardium. Hence, it would be practical to combine

cell transplantation with therapeutic gene delivery to the heart to achieve maximum benefits of stem cell therapy.

In this study, we hypothesized that a combined approach involving BM Sca-1<sup>+</sup> cells genetically modified to express multiple specific therapeutic genes including vascular endothelial growth factor (VEGF), insulin like growth factor-1 (IGF-1), hepatocyte growth factor (HGF) and stromal cell derived factor-1 $\alpha$  (SDF-1 $\alpha$ ) would be more effective in promoting new growth and preservation of the global heart functions. The BM derived Sca-1<sup>+</sup> cells would serve as reservoirs of multiple growth factors to support angiomyogenic repair of the infarcted heart. Moreover, expression of growth factors in the heart would create a gradient to favor mobilization of resident stem/progenitor cells from the BM, peripheral circulation and the heart via specific ligand/receptor interaction for participation in the angiomyogenic repair of the infarcted heart.

## Materials and Methods

### Ethics Statement

All animal experimental procedures conform to the Guide for the Care and Use of Laboratory Animals published by the US National Institutes of Health (NIH Publication #85-23, revised 1996) and were conducted according to a protocol approved by the Institutional Animal Care and Use Committee, University of Cincinnati.

### In vitro Studies

**BM Sca-1<sup>+</sup> selection.** BM was harvested from 6–8 weeks old transgenic male mice expressing GFP. Sca-1<sup>+</sup> cells were purified by EasyStep (Stem cell Technology Inc.) isolation kit according to the manufacturer's instruction. Sca-1 surface marker was confirmed by flow cytometry and fluorescent immunostaining as described earlier [7] and detailed in Text S1.

**Preparation of plasmids and nano-particle based cell transfection.** Plasmids encoding for select quartet of growth factors, i.e., human IGF-1(pCMV-IGF), VEGF (pCMV-VEGF), SDF-1 $\alpha$  (pORF-hSDF-1 $\alpha$ ) and HGF (pBLAST49-hHGF) were prepared and used for genetic modification of Sca-1<sup>+</sup> cells (G<sup>F</sup>Sca-1<sup>+</sup>) as in Figure S1. The list of primers used are described in Table S1. Cells were separately transfected with one of the 4 plasmids using Polyethyleneimine (PEI, Polysciences Inc.) based on our optimized protocol as described in Text S1. After 48 hours in culture, the cells transfected with respective growth factor were pooled together and cultured for further 24 hours before use for *in vitro* as well as *in vivo* studies. Scramble transfected Sca-1<sup>+</sup> cells (S<sup>C</sup>Sca-1<sup>+</sup>) were used as control.

**In vitro characterization of transfected Sca-1<sup>+</sup> cells.** Transfection and expression efficiencies were determined by RT-PCR, western blotting and fluorescent immunostaining 48 hours after their transfection with each plasmid.

**Estimation of cytoprotection and cell proliferation.** The cytoprotective action of growth factors transfection was assessed by treating the G<sup>F</sup>Sca-1<sup>+</sup> and S<sup>C</sup>Sca-1<sup>+</sup> or co-cultured cardiomyocytes (CM) under anoxia with glucose and serum free DMEM. At different time points, the supernatant of different group were collected. Lactate dehydrogenase (LDH) release was measured using CytoTox-ONE<sup>TM</sup> homogeneous membrane integrity assay (Promega) as an indicator of cell membrane integrity and cell viability. The experimental protocol is detailed in Text S1.

In addition to the LDH assay, terminal dUTP Nick-End Labeling Assay (TUNEL) was performed on paraformaldehyde fixed cells with in-situ cell death detection kit (TMR red; Roche Inc.) per manufacturer's instructions. The degree of apoptotic cell death was determined by counting total number of TUNEL positive nuclei per microscopic field (400x).

The cell proliferation was evaluated *in vitro* with the use of the MTS [3-(4,5-dimethylthiazol-2-yl)-5-(3-carboxymethoxyphenyl)-2-(4-sulfophenyl)-2H-tetrazolium] assay according to the manufacturer's recommendations (Promega) as previously described [8].

**Tube formation and cell migration assays.** Conditioned medium from transfected pooled Sca-1<sup>+</sup> cells were used for matrigel angiogenesis assay and transwell cell migration assay as detailed in Text S1.

### In vivo Studies

**Experimental animal model of myocardial infarction.** Myocardial infarction model was developed in 8–12 weeks old female C57BL/6J mice as described earlier [9]. Briefly, the animals were anesthetized (Ketamine/Xylazine 0.05 ml intraperitoneally), intubated, and mechanically ventilated.

Minimally invasive thoracotomy was performed for permanent ligation of left anterior descending coronary artery. Myocardial ischemia was confirmed by color change of left ventricular wall. The animals were grouped to receive 15  $\mu$ l DMEM without cells (group-1) or containing  $2.5 \times 10^5$  S<sup>C</sup>Sca-1<sup>+</sup> cells (group-2) or growth factor transfected pooled cells (group-3) by direct intramyocardial injections in and around the infarction area. The chests were closed and the animals were allowed to recover. Buprenex (0.1 mg/kg per 12 hours) was administered for 24 hours to alleviate pain. The animals were euthanized on 4 days and 4 weeks after their respective treatment. The heart tissue samples were used for molecular, histological and immunohistological studies.

**Estimation of cells survival post transplantation.** PCR for *my*-gene expression [7] was performed on myocardial tissue samples from various treatment groups of the animals 4 days after their respective treatment (n = 4 per group).

**Histological studies.** Histological and immunohistochemical studies were carried out as detailed in Text S1. The antibodies and their concentrations used are given in Table S2.

**The heart function studies and infarction size measurement.** The heart function evaluation was performed in all the animals by transthoracic echocardiography 4 weeks after their respective treatment (n = 7/group) as described in Text S1. Histological tissue sections were stained with H&E and Masson's Trichrome for infarction size measurement.

### Statistical Analysis

All the data were described as mean  $\pm$  SEM. To analyze the data statistically, we performed Student's *t*-test and one-way ANOVA with post-hoc analysis and considered a value of  $p < 0.05$  as statistically significant.

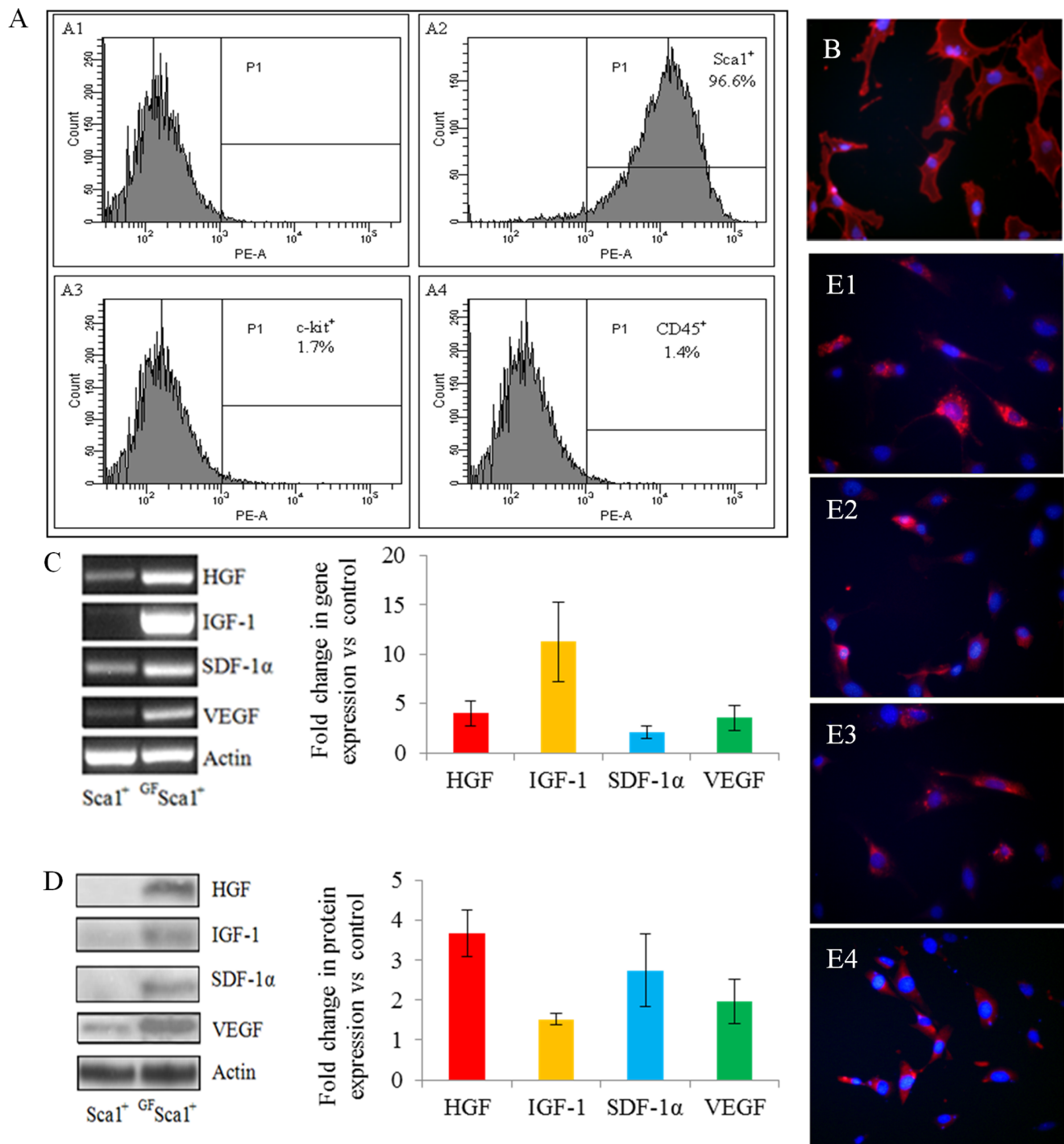
## Results

### In vitro Studies

**Efficiency of growth factor transfection in purified BMSca-1<sup>+</sup>.** BM Sca-1<sup>+</sup> were successfully isolated from male donor mice. Flow cytometry (Figure-1 Panel A; A1–A4) and fluorescent immunostaining (Figure-1B) demonstrated more than 96% pure Sca-1<sup>+</sup> population. Plasmid encoding for human IGF-1(pCMV-IGF), VEGF (pCMV-VEGF), SDF-1 $\alpha$  (pORF-hSDF-1 $\alpha$ ) and HGF (pBLAST49-hHGF) were successfully constructed and used for transfection of Sca-1<sup>+</sup>. Expression of the respective transgene was increased in Sca-1<sup>+</sup> after transfection with the individual growth factor plasmid which was evident from RT-PCR (Figure 1C), western blotting (Figure 1D) and fluorescence immunostaining (Figure 1E, E1–E4).

**Gene expression by G<sup>F</sup>Sca-1<sup>+</sup>.** Besides multi-fold increase by overexpression of the four growth factors, real-time PCR using growth factor array showed up-regulation of multiple angiogenic and pro-survival factors including angiopoietin-1 & 2 (Ang-1 & Ang-2), matrix metalloproteinase-9 (MMP9), connexin-43 (Cx43), bone morphogenetic protein-2 & -5 (BMP-2 & 5), fibroblast growth factor-2 (FGF-2), and nerve growth factor (NGF) in pooled G<sup>F</sup>Sca-1<sup>+</sup> cells compared to native Sca-1<sup>+</sup> cells (Figure 2A).

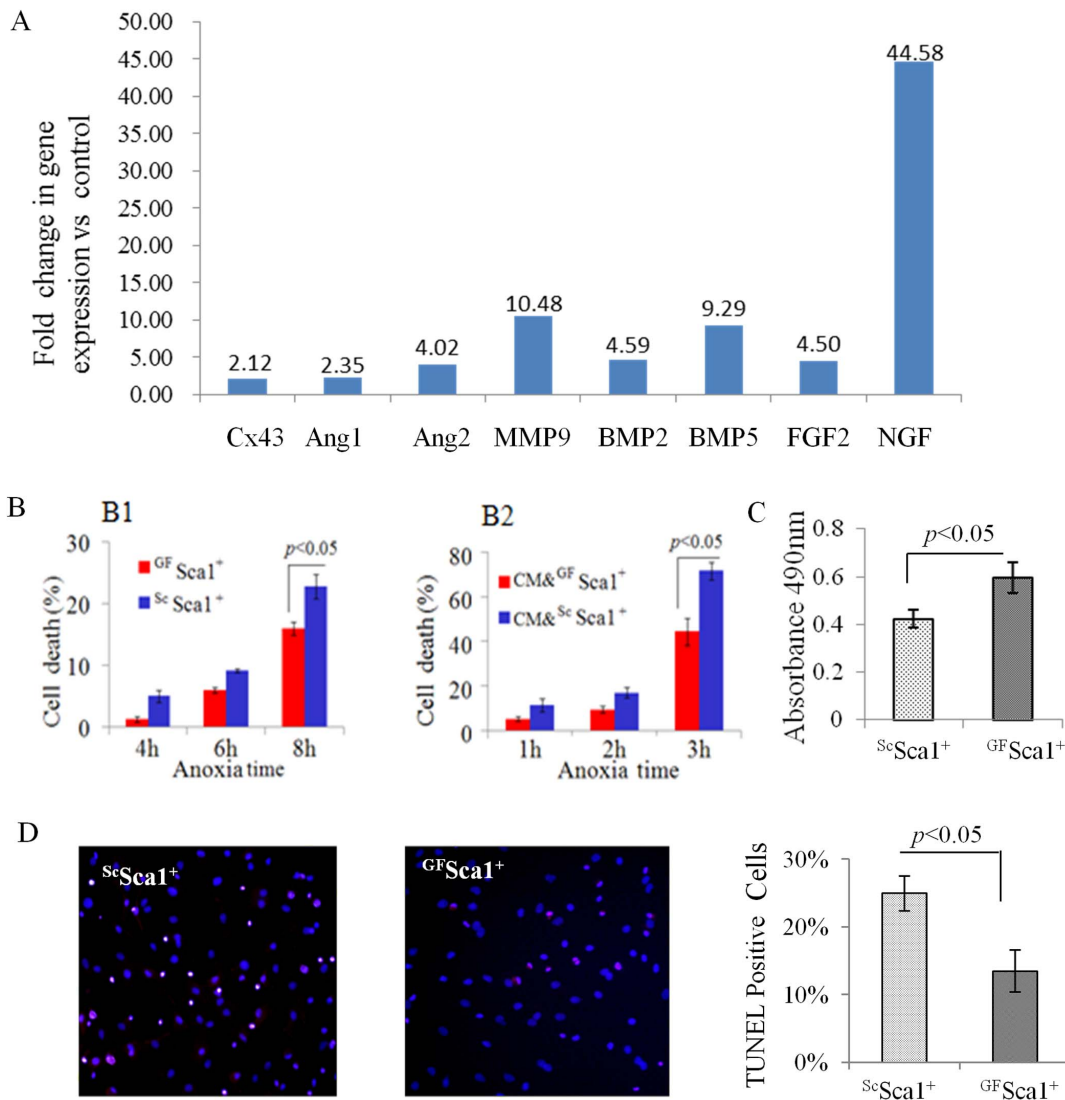
**Effect of G<sup>F</sup>Sca-1<sup>+</sup> on cytoprotection, proliferation and angiogenesis.** Transfection of Sca-1<sup>+</sup> with growth factors was protective against anoxia under co-culture conditions and prevented cell death. LDH release, a marker of cellular injury was significantly reduced in G<sup>F</sup> Sca-1<sup>+</sup> and co-cultured cardiomyocytes (CM) (Figure 2B). Also TUNEL positive cells were reduced in G<sup>F</sup>Sca-1<sup>+</sup> (13.52%  $\pm$  3.08%) as compared to S<sup>C</sup>Sca-1<sup>+</sup> cells (24.98%  $\pm$  2.60%,  $p < 0.05$ , Figure 2D) under 8 hours lethal anoxia. To examine whether growth factor transfection had any



**Figure 1. Flow cytometry of the purified mouse BM Sca-1<sup>+</sup> cells for surface markers analysis.** (A) unlabeled Sca-1<sup>+</sup> cells (control; A1), labeled cells showing 96.6% Sca-1<sup>+</sup> (A2), 1.7% c-kit<sup>+</sup> (A3), and 1.4% CD45<sup>+</sup> (A4) cell populations. (B) Immunostaining of cells for Sca-1 antigen (red = Sca-1; blue = DAPI; magnification = 400x). (C–E) Representative figures of *in vitro* characterization of BM Sca-1<sup>+</sup> cells transfected for expression of the respective transgene. RT-PCR (C) and western blot (D) for HGF, IGF-1, SDF-1 $\alpha$ , and VEGF transgene expression *in vitro*. In each case, non-transfected native Sca-1<sup>+</sup> cells were used as a control. Densitometry showed significantly up-regulated expression of the respective growth factor gene and protein in the transfected Sca-1<sup>+</sup> cells 48 hours after transfection. (E) Fluorescence images of the Sca-1<sup>+</sup> cells immunostained for respective growth factor HGF (E1, red), IGF-1 (E2, red), SDF-1 $\alpha$  (E3, red), VEGF (E4, red). DAPI was used to visualize the nuclei (blue, magnification = 400x). doi:10.1371/journal.pone.0093645.g001

effect on proliferation rate, MTS assay was used to determine proliferative activity *in vitro*. The proliferation rate of <sup>GF</sup>Sca-1<sup>+</sup> group was significantly higher compared with <sup>SC</sup>Sca-1<sup>+</sup> ( $0.59 \pm 0.06$  vs.  $0.42 \pm 0.04$  absorbance at 490 nm, Figure 2C).

The conditioned medium from <sup>GF</sup>Sca-1<sup>+</sup> (<sup>GF</sup>Sca-1<sup>+</sup>CMD) also promoted human umbilical vein endothelial cells (HUVEC) migration *in vitro* in the trans-well migration system as compared with medium from <sup>SC</sup>Sca-1<sup>+</sup> (<sup>SC</sup>Sca-1<sup>+</sup>CMD) ( $15 \pm 2.38$  vs  $8 \pm 2.35$ ,  $p <$



**Figure 2. (A) Real-time PCR based growth factor array showing up-regulation of multiple angiogenic and pro-survival factors including connexin-43 (Cx43), angiopoietin-1 & 2 (Ang-1 & Ang-2), matrix metalloproteinase-9 (MMP9), Bone morphogenetic protein 2 & 5 (BMP2 & 5), fibroblast growth factor-2 (FGF-2), and Nerve growth factor (NGF) in pooled GF Sca1<sup>+</sup> cells compared to control Sc Sca1<sup>+</sup> cells. (B; B1–B2) LDH release assay showed significant reduction of cell death in GF Sca1<sup>+</sup> as compared to Sc Sca1<sup>+</sup> after 8 hours cultured under lethal anoxia (B1) and co-cultured cardiomyocytes after 3 hours under lethal anoxia (B2). (C) MTS assay was used to determine proliferative activity in vitro. The proliferation rate of GF Sca1<sup>+</sup> group was significantly higher as compared to Sc Sca1<sup>+</sup> ( $0.59 \pm 0.06$  vs.  $0.42 \pm 0.04$  absorbance at 490 nm) (D) TUNEL staining confirmed that 8 hours lethal anoxia caused higher TUNEL positivity in Sc Sca1<sup>+</sup> as compared to GF Sca1<sup>+</sup> cells.**

doi:10.1371/journal.pone.0093645.g002

0.01, Figure 3A). Similarly, *in vitro* tube formation assay on matrigel showed higher branch points ( $58 \pm 5.8$ ) per microscope field (100x) at 16 hours after incubation with GF Sca1<sup>+</sup> CMD as compared with Sc Sca1<sup>+</sup> CMD ( $39 \pm 4.6$ ,  $p < 0.05$ , Figure 3B).

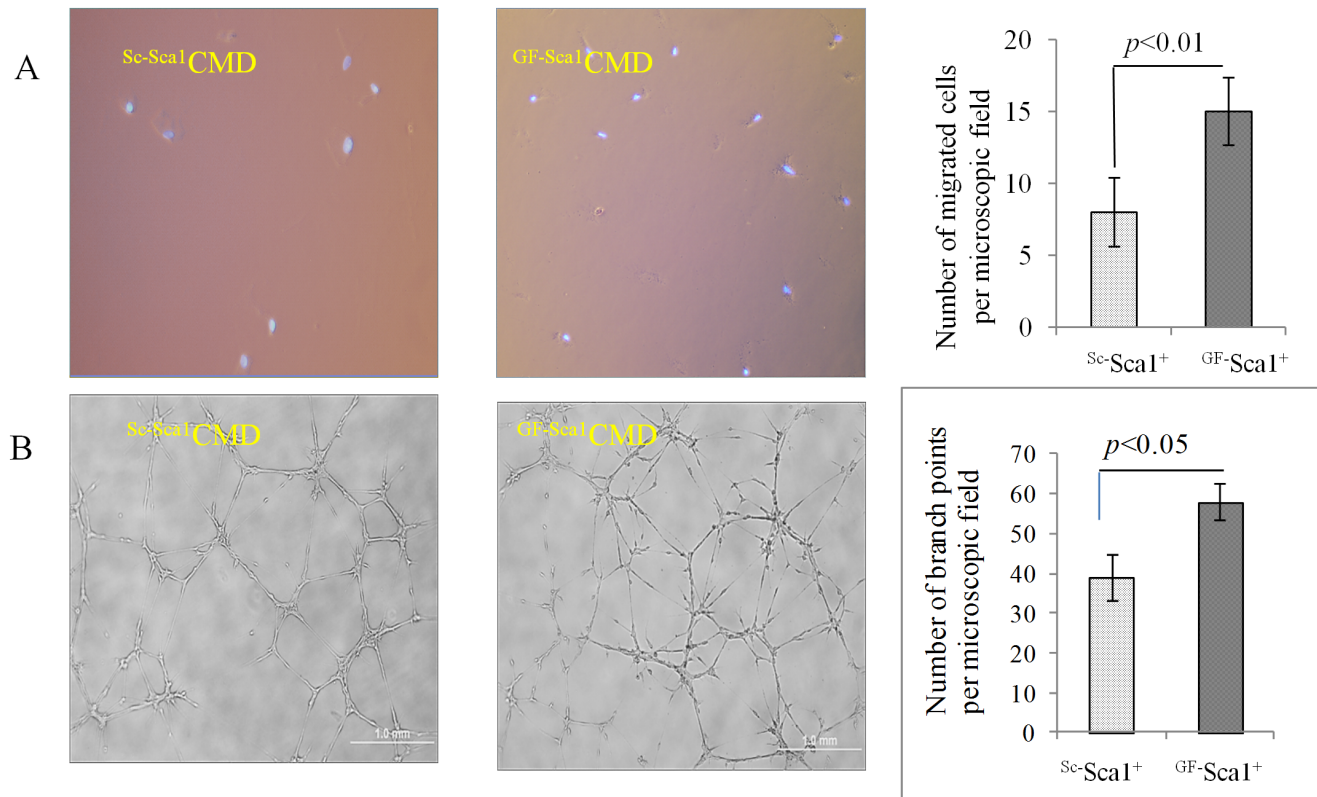
#### In vivo Studies

**Sca1<sup>+</sup> transplantation and differentiation in the heart.** RT-PCR of heart tissue samples showed higher expression of transfected growth factors including HGF, IGF-1, SDF-1 $\alpha$  and VEGF 4 days after engraftment (Figure 4A). The transplanted male GF Sca1<sup>+</sup> showed better survival in the infarcted heart. PCR for *myo*-gene in female mice heart on day 4 revealed 2.3 times increased survival of the donor male cells in GF Sca1<sup>+</sup> group as compared to Sc Sca1<sup>+</sup> group ( $P < 0.01$ , Figure 4B). We did not

observe *myo*-gene expression in DMEM injected female animal hearts which served as a negative control. These results were supported by immunohistological studies which confirmed extensive presence of GFP<sup>+</sup> positive cells at the site of cell graft in GF Sca1<sup>+</sup> group at day 4 after transplantation (Figure 4C).

**Stem/progenitor cells homing into myocardium.** The histological sections of heart tissues from different treatment groups were immunostained for the presence of stem and progenitor cells of various lineages which were mobilized into the infarcted heart. Figure 4D shows numerous c-Kit<sup>+</sup>, CXCR4<sup>+</sup>, MDR1<sup>+</sup> (Figure 4D; D1–D3) cells respectively which mobilized into the infarcted heart in GF Sca1<sup>+</sup> treatment group. The number of mobilized ckit<sup>+</sup> cells was significantly higher in group-3 as





**Figure 3. Cell migration and angiogenic effects of CMD *in vitro*.** (A) Trans-well cell migration assay using HUVECs showed that the number of migrating cells per microscopic field (200x) in response to <sup>GF-Sca1</sup>CMD was significantly higher compared to <sup>Sc-Sca1</sup>CMD as a control ( $15 \pm 2.38$  vs  $8 \pm 2.35$ ,  $p < 0.01$ ). Nuclei were stained with DAPI (blue). (B) Tube formation assay on matrigel using HUVECs treated with conditioned medium (CMD) from <sup>GF-Sca1</sup> cells (<sup>GF-Sca1</sup>CMD) or <sup>Sc-Sca1</sup> cells (<sup>Sc-Sca1</sup>CMD). <sup>GF-Sca1</sup>CMD showed significantly higher number of branch points per microscopic field (100x) as compared to <sup>Sc-Sca1</sup>CMD.  
doi:10.1371/journal.pone.0093645.g003

compared to group-2 ( $55.50 \pm 9.87$  vs.  $20.88 \pm 8.53$ /microscope field,  $p < 0.05$ ).

**Histological evaluation of transplanted cells in the infarcted heart.** Immunostaining of the heart tissue for subcellular structures revealed increased angiomyogenic differentiation of the transplanted Sca-1<sup>+</sup> in the infarct and peri-infarct regions 4 weeks after transplantation (GFP, green; Figure 5A1, B1),  $\alpha$ -actinin (red; Figure 5A2) and vWF (red; Figure 5B2). Fluorescence immunostaining also showed Cx43 positivity for gap junctions formed between <sup>GF-Sca1</sup> and the host cardiomyocytes in the infarcted area (Figure 5C). These observations were consistent with our *in vitro* data that <sup>GF-Sca1</sup> showed two fold increase in Cx43 (Figure 2A) and Cx43 formation between co-cultured <sup>GF-Sca1</sup> and cardiomyocytes (Figure 5D).

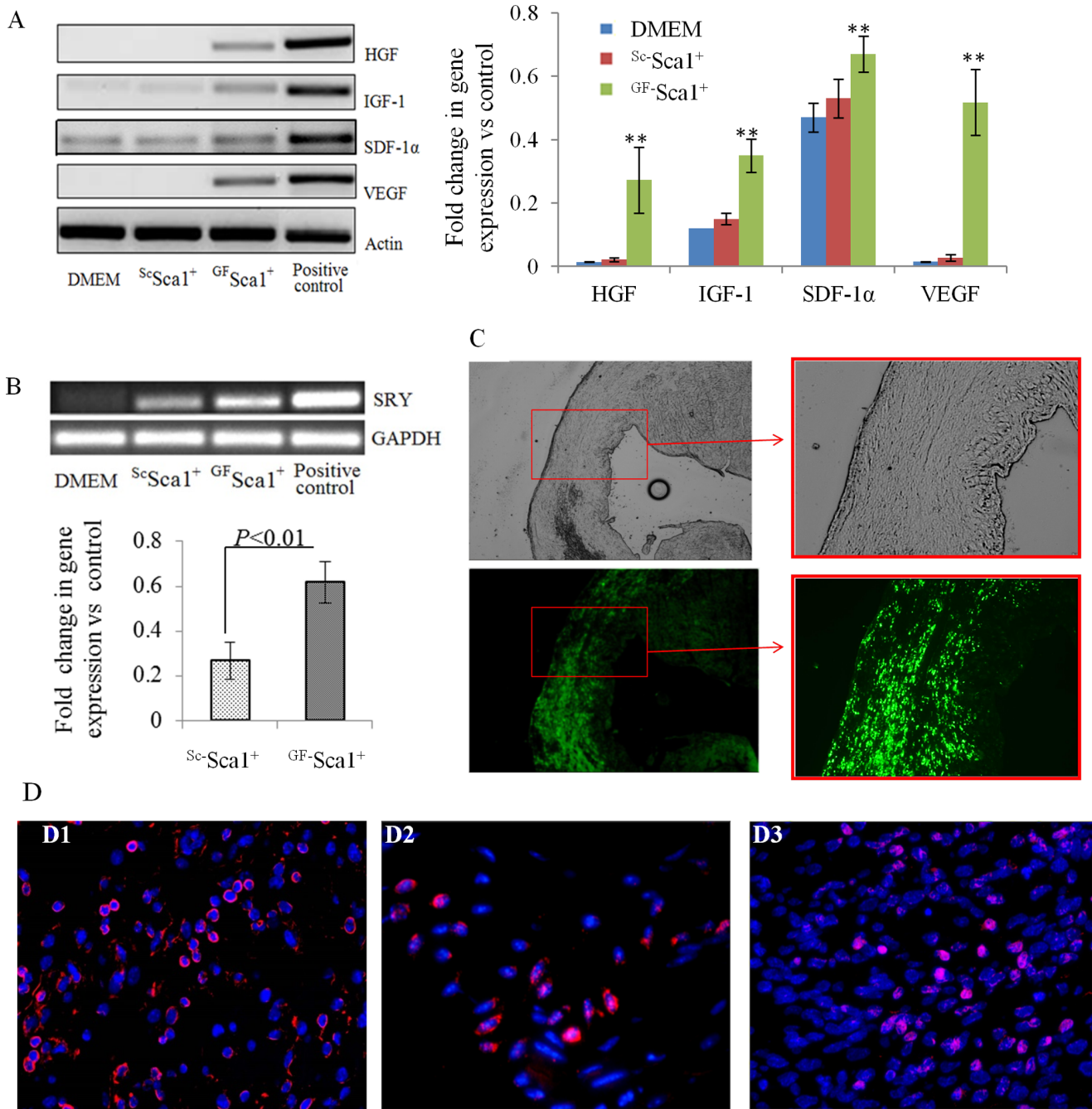
**<sup>GF-Sca1</sup> improve angiogenesis in the infarcted myocardium.** Blood vessel density was measured in the infarct and peri-infarct regions after immunostaining of histological sections with vWF (red) to detect vascular structures. A large number of blood vessels were observed in the cell transplanted areas in both <sup>GF-Sca1</sup> and <sup>Sc-Sca1</sup> treatment groups. Blood vessel count per microscope field (200x; Figure 6) was the highest in both peri-infarct ( $34.9 \pm 4.7$ ) and infarct ( $24.6 \pm 3.2$ ) regions in <sup>GF-Sca1</sup> group ( $P < 0.01$ ) as compared to the peri-infarct and infarct regions in <sup>Sc-Sca1</sup> group ( $24.4 \pm 1.7$  and  $16 \pm 2.7$  respectively) and in DMEM group ( $15.6 \pm 2.9$  and  $9.3 \pm 1.5$  respectively, Figure 6).

**Infarct size and heart function.** Histological sections at mid-papillary muscle level followed by Masson's trichrome staining showed transmural infarction in all the animals at 4

weeks after coronary artery ligation (Figure 7A). Noticeable left ventricle wall thinning was observed at 4 weeks in DMEM treated group whereas left ventricle wall thickness was considerably retained in <sup>GF-Sca1</sup> group. Infarct size was significantly lower at 4 weeks in <sup>GF-Sca1</sup> group ( $21.2\% \pm 3.6\%$ ;  $p < 0.01$ ) as compared to DMEM group ( $48.9\% \pm 4.3\%$ ) and <sup>Sc-Sca1</sup> group ( $35.6\% \pm 1.3\%$ , Figure 7B). Transthoracic echocardiography of animals at 4 weeks after their respective treatment showed significant differences in the indices of left ventricle function amongst various treatment groups. Left ventricle ejection fraction ( $55.9 \pm 6.2\%$ ) and left ventricle fractional shortening ( $24.0 \pm 3.6\%$ ) were significantly improved in <sup>GF-Sca1</sup> group as compared to <sup>Sc-Sca1</sup> group ( $42.6 \pm 3.6\%$  and  $16.9 \pm 1.7\%$  respectively) and DMEM injected group ( $31.4 \pm 6.2\%$  and  $11.9 \pm 2.7\%$  respectively,  $p < 0.01$ , Figure 7C–D).

## Discussion

For last several years, BMSCs have been extensively used to regenerate infarcted myocardium [10,11] with heterogeneous results. More recently attempts have been made to render these cells smarter by modifying them exogenous growth factors or gene transfer strategies. Previously we have shown the effectiveness of several individual growth factors for treatment of experimental myocardial infarction [12–15] and in this study we transfected the BM Sca-1<sup>+</sup> cells with individual transgenic plasmids and then pooled the transfected cells before transplantation. This multimodal non-viral gene therapy approach resulted in activation and

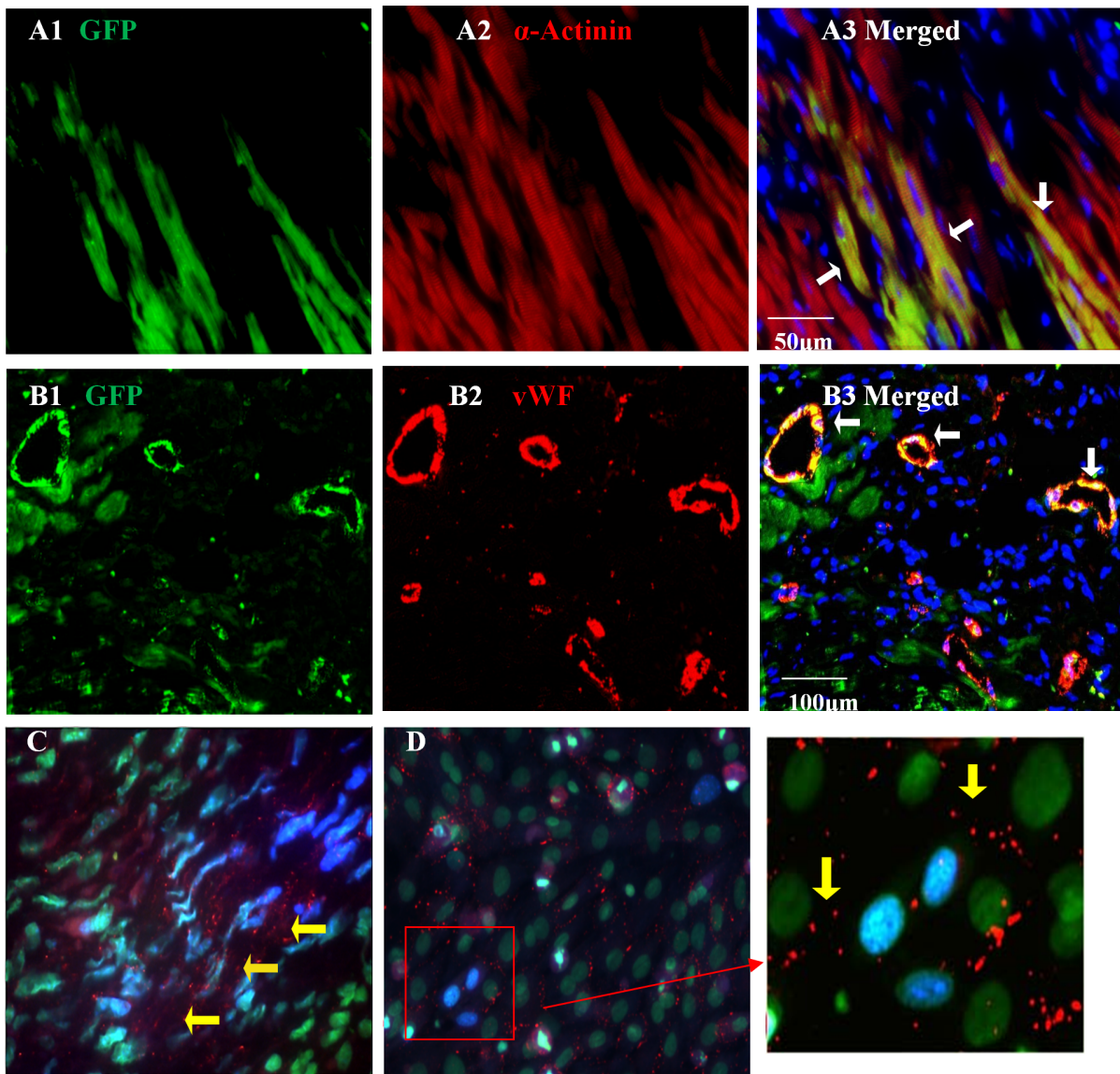


**Figure 4. Cell survival and release of growth factors at 4 day post transplantation.** (A) RT-PCR using the heart tissue samples on day 4 from different treatment groups. The results showed continued expression of each growth factor until day 4 post transplantation. (\*\* $P < 0.01$ , GF-Sca1<sup>+</sup> group vs control groups). (B) Sry-gene expression in female mouse heart revealed extensive survival of the male donor cells in GF-Sca1<sup>+</sup> group as compared to ScSca1<sup>+</sup> group. (C) Fluorescent immunostaining for GFP expression showed extensive presence of GF-Sca1<sup>+</sup> cells in the infarct and peri-infarct regions at 4 days after transplantation (magnification 40x, 100x). (D) Immunostaining for c-kit (D1, red), CXCR4 (D2, red) and MDR1 (D3, red) showed extensive presence of mobilized cells in the infarct and peri-infarct regions at 4 days after GF-Sca1<sup>+</sup> transplantation (magnification 200x). The nuclei are stained with DAPI (blue). doi:10.1371/journal.pone.0093645.g004

participation of the intrinsic ligand/receptor systems: VEGF/VEGFR, HGF/cMet, IGF-1/IGF-1R and SDF/CXCR4, in the repair processes of infarcted myocardium. Our multipronged strategy activated the multiple signaling mechanisms resulting in reduced cell apoptosis, increased cell proliferation, massive stem/progenitor cell homing to the site of ischemic injury. The

transplanted and mobilized cells appeared to differentiate into cardiomyocytes in the infarcted area with significant improvement in the left ventricular ejection fraction.

The rationale of selecting various growth factors was based on their distinct functional role in the myocardial biology. These growth factors have pleiotropic functions. IGF-1 interacts with its

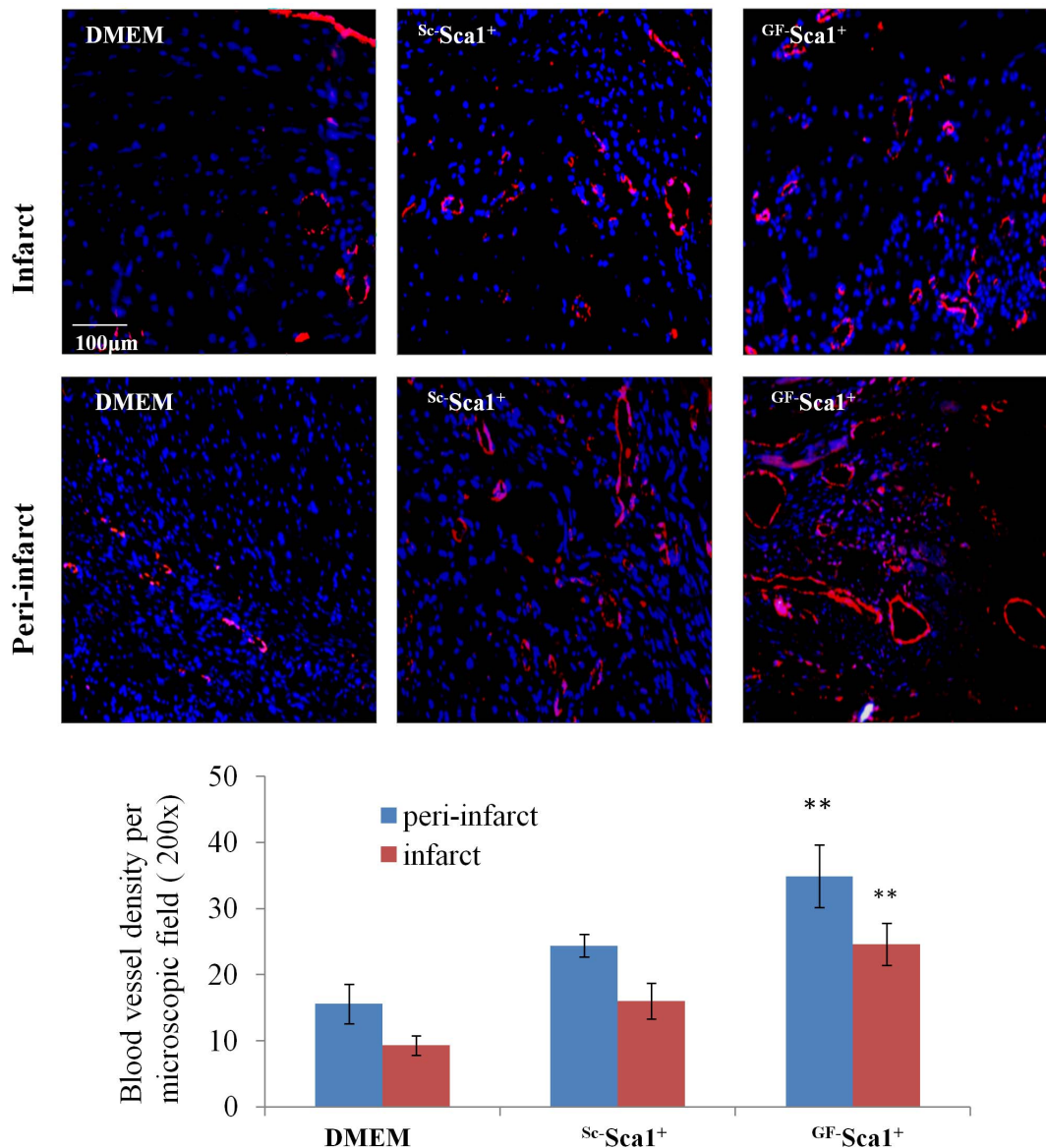


**Figure 5. Microscopic images from recipient mouse hearts 4 weeks post-transplantation.** Fluorescence immunostaining of the heart tissue revealed increased angiomyogenic differentiation of the transplanted Sca-1<sup>+</sup> in the infarct and peri-infarct regions 4 weeks after transplantation (GFP (green 5A1,5B1),  $\alpha$ -actinin (red; Figure 5A2) and vWF (red; Figure 5B2)). Arrows show the merged color of red and green indicating the colocalization of  $\alpha$ -actinin and GFP (5A3) or vWF and GFP (5B3). The nuclei were stained with DAPI (blue) (C) Immunostaining of the heart tissue revealed Cx43 (red) expression between <sup>GF</sup>Sca-1<sup>+</sup> and the host cardiomyocytes (indicated by yellow arrows). (D) Cx43 (red) expression between <sup>GF</sup>Sca-1<sup>+</sup> and the co-cultured cardiomyocytes at day 4 after co-culture. (C–D) <sup>GF</sup>Sca-1<sup>+</sup> stem cells were prelabeled with DAPI (blue), and the nuclei were double stained with SYTOX (green). doi:10.1371/journal.pone.0093645.g005

IGF-1R receptors to impart its cytoprotective, pro-proliferative and pro-differentiation effects [16,17]. We have reported that IGF-1 preconditioning of Sca-1<sup>+</sup> cells promotes Cx43 induction and their translocation into mitochondria for its dual role of stem cell integration as well as protection post-engraftment [7]. HGF is a mesenchyme derived pleiotropic factor that is thought to mediate the interaction between epithelial and endothelial cells via autocrine and paracrine functions, promoting angiogenesis. In addition, HGF exerts its anti-cell death effects by blocking apoptosis [18]. The HGF receptor is a membrane spanning tyrosine kinase encoded by the c-Met proto-oncogene [19]. Myocardial HGF/c-Met is upregulated in the heart following myocardial infarction [20,21]. HGF does not influence the mitosis

of cardiac cells, but prevents post-infarction remodeling of heart. Administration of IGF/HGF improved cardiomyocyte survival, and reduced fibrosis and cardiomyocytes reactive hypertrophy. It significantly activated resident endogenous cardiac stem/progenitor cells and fostered the generation of new myocytes and microvasculature in infarcted and peri-infarct/border areas [22]. VEGF is well known for its ability to stimulate proliferation of endothelial cells in vitro and neovasclogenesis in the ischemic heart in vivo [23,24]. In addition VEGF, an angiogenic growth factor can also promote differentiation of stem cells into cardiomyocytes and endothelial cells [25,26]. SDF-1 $\alpha$  is a ligand for CXCR4 receptors expressed on BMSC. SDF was transiently upregulated in infarct and peri-infarct regions in experimental





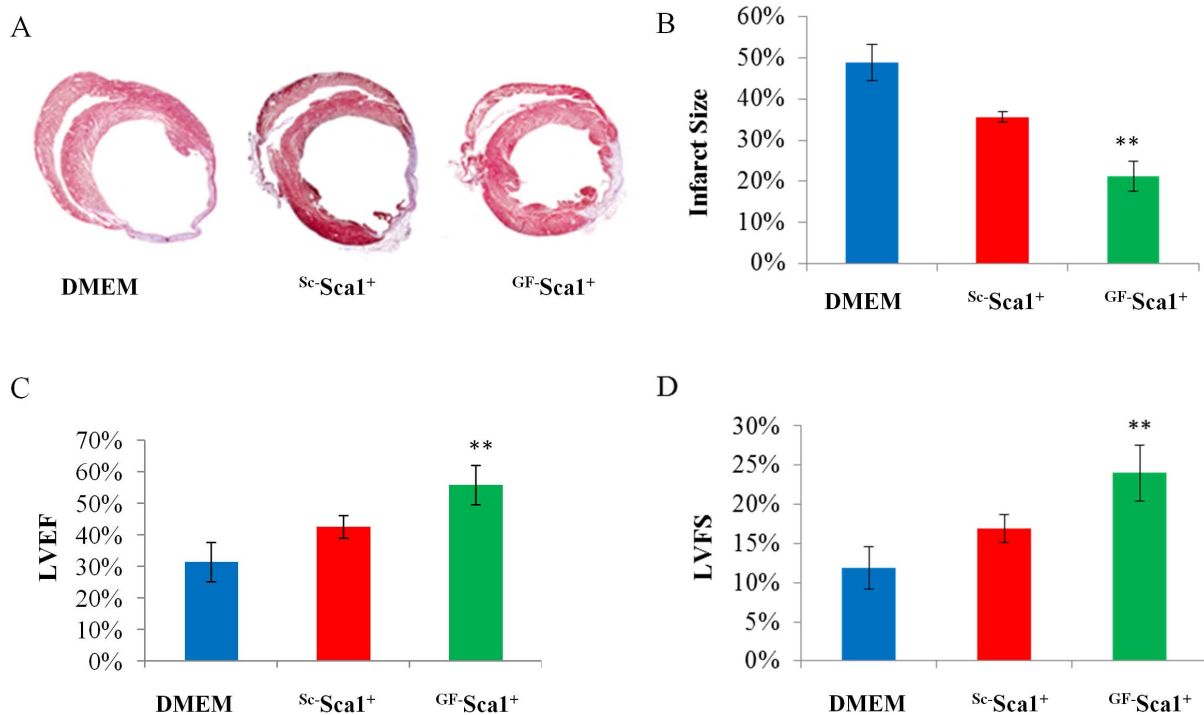
**Figure 6. Blood vessel density analyzed by fluorescence immunostaining for vWFactor-VIII (red).** Blood vessel density was significantly higher in GF-Sca1<sup>+</sup> group both in the infarct and peri-infarct regions as compared to control groups (\*\* $p < 0.01$ , magnification 200x). doi:10.1371/journal.pone.0093645.g006

animal models of myocardial infarction and SDF-1/CXCR4 interactions played a crucial role in the recruitment of BMSCs to the infarcted myocardium [8]. The SDF-1/CXCR4 axis seems to be a novel therapeutic approach to improve post-infarction therapy by attracting circulating stem cells to the site of injury where they differentiated into cardiac cells in the infarcted heart [27]. We have previously shown that transplantation of MSCs overexpressing IGF-1 caused massive stem cell mobilization into infarcted hearts through paracrine signaling of SDF-1 $\alpha$  resulting in extensive angiogenesis with better cardiac function [12]. A recent study has suggested that SDF-1 $\alpha$  and VEGF form a synergistic angiogenic pathway that is critical for endothelial progenitor cell induced neovascularization [28].

Given the distinct functional role of these cytokines, our novel strategy of multiple growth factor transgene delivery is aimed to harness their combined beneficial effects for treatment of infarcted heart. This study provides evidence that the selected quartet of

growth factors created a growth factor gradient for mobilization of recipient's own pool of BMSC, EPC and resident cardiac stem cells for participation in the repair process. In addition MSCs can secrete large amounts of paracrine factors which are angiogenic and anti-apoptotic, alter the restoration of extracellular matrix and also recruit endogenous stem cells [29,30,31]. In this study, we also observed significant upregulation of matrix metalloproteinases (MMP), bone morphogenetic protein (BMP), nerve growth factor (NGF), and fibroblast growth factor (FGF).

MMPs are important for cell migration, invasion, proliferation, and apoptosis prevention. They regulate many developmental processes, including branching morphogenesis, angiogenesis, wound healing, and extracellular matrix degradation [32]. MMP-9 induced in BM cells, releases soluble kit-ligand (sKitL), permitting the transfer of stem cells from the quiescent state to proliferative niche favoring differentiation and reconstitution of the stem/progenitor cell pool. SDF-1 and VEGF both can up-



**Figure 7. Masson trichrome staining was performed to evaluate the infarction size.** Significant attenuation of infarct size was observed in <sup>GF</sup>Sca-1<sup>+</sup> group as compared to other groups. Indices of the left ventricular contractile function including LVEF and LVFS were significantly preserved in <sup>GF</sup>Sca-1<sup>+</sup> group at 4 weeks after cell engraftment as compared to other groups (\*\* $P < 0.01$ ). doi:10.1371/journal.pone.0093645.g007

regulate MMP-9 expression, and cause shedding of sKitL and recruitment of c-Kit<sup>+</sup> stem/progenitors [33]. BM-derived MMP-9 plays an important role in BM cell mobilization and focal angiogenesis in response to VEGF stimulation [34]. BMPs are part of the transforming growth factor  $\beta$  (TGF- $\beta$ ) superfamily [35] and comprise of a large, evolutionarily conserved family of secreted signaling molecules that are required for numerous developmental processes. BMP-2 is known to play an important role in the process of heart development [36]. BMP signaling also cooperates with VEGF signaling to affect the process of angiogenesis [37]. In vitro, BMP-2 stimulates proliferation of human aortic endothelial cells (HAEC) [38] and pulmonary aortic endothelial cells (PAEC) [39]. BMP-2 also increases the migration and tube formation of human microvascular endothelial cells (HMEC) [40] and human umbilical vein endothelial cells (HUVEC) [38]. NGF is a secreted glycoprotein of the neurotrophin family. It promotes angiogenesis and cardiomyocyte survival, which are both desirable for postinfarction myocardial healing. Recent findings demonstrate that the co-transfection of hNGF+VEGF genes in BMSCs can enhance the angiogenic effect *in vivo* [41]. NGF elicits its biological effects mainly by binding the high affinity TrkA receptor (tropomyosin-related receptor A). The prosurvival/proangiogenic Akt/Foxo pathway mediated the therapeutic benefits of NGF. NGF gene transfer ameliorated endothelial cells and cardiomyocyte survival, promoted neovascularization and improved myocardial blood flow and cardiac function in the infarcted myocardium [42]. FGFs are members of a family of polypeptides and FGF receptor (FGFR) are a family of transmembrane tyrosine kinase. FGF and FGFR system plays a significant role in mitogenic and angiogenic activity. FGF-2 can be induced by VEGF while FGF2 in turn can also induce VEGF expression. Both VEGF and FGF2 activate the Erk-1/2 pathway and share some similarities

[43]. Thus FGF-2 is an important regulator of cell proliferation, angiogenesis, collagen synthesis, myocyte hypertrophy, scar contraction, and ultimately improvement of left ventricular contractile function [44]. FGF-2 also plays a pivotal role in the self-regeneration of the heart by accelerating the mobilization and differentiation of resident stem cells for cardiac repair [45]. More importantly, we observed higher Cx43 expression in <sup>GF</sup>Sca-1<sup>+</sup> transplanted animals by real time PCR and immunostaining. This is corroborated with in vitro data showing extensive Cx43 formation at the cell-cell junctions of <sup>GF</sup>Sca-1<sup>+</sup> co-cultured with neonatal cardiomyocytes. There are few reports on Cx43 expression by stem cells post-engraftment and their electromechanical coupling with host cardiomyocytes. However, in the present study, <sup>GF</sup>Sca-1<sup>+</sup> expressed significant amounts of Cx43 until 4 weeks post engraftment, which most likely improved the cells survival and differentiation.

Despite promising results, there are several limitations to this study. We used human growth factors (GFs) for pre-treatment of the BMSCs isolated from mice, although structural homology of these GFs is very high between humans and mice. Sca-1 is a cosignaling molecule that can modify the signaling capacity of receptor complex [46]. To evaluate a single factor in comparison with multiple growth factor requires thorough analysis. Because we treated BMSCs with a combination of four GFs and used non-viral method, it may limit the efficiency of individual GF effect and the understanding of underlying mechanism of individual GF. We did not look into the effect of single growth factor transduction on the gene expression of other growth factors. Although a significant increase in blood vessel density and decrease in infarction area was observed however, the role and fate of the mobilized cells could not be determined due to lack of specific markers on the cells. The cells which co-expressed GFP and cardiac muscle marker were not



numerous and these cells may be the consequence of transdifferentiation of BMSCs into cardiomyocyte-like cells, or the result of cell fusion of BMSCs with host cardiomyocytes, or both [47,48]. It is less convincing that low frequent transdifferentiation or cell fusion may contribute to significant cardiac function improvement in this study. The cytokines/growth factors exhibit a wide range of other functions (eg, stem/progenitor cell mobilization, recruitment, antiapoptotic activity, paracrine signaling and proangiogenic effects [49] thus, it is unclear to what extent the induction of cardiac differentiation by stem cells contributed to the therapeutic benefits. In a recent study on cardiac stem cells [50], a detailed mechanistic insight for the understanding of myocardial homeostasis and tissue repair has been discussed.

The present data provide supportive evidence that the gene delivery and paracrine effects mediated by <sup>GF</sup>Sca-1<sup>+</sup> are significant in attenuation of ventricular remodeling and the improvement of cardiac function during cell transplantation. Given the fact that tissue damage and regeneration are complex in nature, it is more likely that multiple growth factors and trophic factors acting in synergy are involved in tissue healing. Simultaneous use of BMSCs transfected with multiple cytokines with diverse effects is a novel approach for cardioprotection and regeneration of the infarcted myocardium.

## References

- Mozid AM, Arnous S, Sammut EC, Mathur A (2011) Stem cell therapy for heart diseases. *Br Med Bull* 98: 143–59.
- Orlic D, Kajstura J, Chimenti S, Jakoniuk I, Anderson SM et al. (2001) Bone marrow cells regenerate infarcted myocardium. *Nature* 410: 701–5.
- Shake JG, Gruber PJ, Baumgartner WA, Senechal G, Meyers J, et al. (2002) Mesenchymal stem cell implantation in a swine myocardial infarct model: engraftment and functional effects *Ann Thorac Surg* 73: 1919–1925.
- Martin-Rendon E, Brunskill SJ, Hyde CJ, Stanworth SJ, Mathur A, Watt SM (2008) Autologous bone marrow stem cells to treat acute myocardial infarction: a systematic review. *Eur Heart J* 29: 1807–1818.
- Piepoli MF, Vallisa D, Arbasi M, Cavanna L, Cerri L et al. (2010) Bone marrow cell transplantation improves cardiac, autonomic, and functional indexes in acute anterior myocardial infarction patients. *Eur J Heart Fail* 12: 172–80.
- Wen Z, Zheng S, Zhou C, Wang J, Wang T (2011) Repair mechanisms of bone marrow mesenchymal stem cells in myocardial infarction. *J. Cell. Mol. Med.* 15: 1032–1043.
- Lu G, HK Haider, S Jiang, M Ashraf (2009) Sca-1+ stem cell survival and engraftment in the infarcted heart: dual role for preconditioning-induced connexin-43. *Circulation* 119: 2587–2596.
- Pasha Z, Wang Y, Sheikh R, Zhang D, Zhao T, Ashraf M. (2008) Preconditioning enhances cell survival and differentiation of stem cells during transplantation in infarcted myocardium. *Cardiovasc Res.* 77: 134–42.
- Pasha Z, Haider K H, M Ashraf (2011) Efficient non viral reprogramming of myoblasts to stemness with a single small molecule for generating cardiac progenitors cells. *PLoS One* 6: e23667.
- Nesselmann C, Ma N, Bieback K, Wagner W, Ho A, Kontinen YT et al. (2008) Mesenchymal stem cells and cardiac repair. *J Cell Mol Med.* 12(5B): 1795–810.
- Song H, Song BW, Cha MJ, Choi IG, Hwang KC. (2010) Modification of mesenchymal stem cells for cardiac regeneration. *Expert Opin Biol Ther.* 10: 309–19.
- Haider H, Jiang S, Idris NM, Ashraf M. (2008) IGF-1-overexpressing mesenchymal stem cells accelerate bone marrow stem cell mobilization via paracrine activation of SDF-1 alpha/CXCR4 signaling to promote myocardial repair. *Circ Res* 103: 1300–1308.
- Elmadbouh I, Haider H, Jiang S, Idris NM, Lu G, Ashraf M. (2007) Ex vivo delivered stromal cell-derived factor-1alpha promotes stem cell homing and induces angiogenesis in the infarcted myocardium. *J Mol Cell Cardiol* 42: 792–803.
- Wang Y, Ahmad N, Wani MA, Ashraf M. (2004) Hepatocyte growth factor prevents ventricular remodeling and dysfunction in mice via Akt pathway and angiogenesis. *J Mol Cell Cardiol* 37: 1041–1052.
- Wang Y, Haider HK, Ahmad N, Xu M, Ge R, Ashraf M. (2006) Combining pharmacological mobilization with intramyocardial delivery of bone marrow cells over-expressing VEGF is more effective for cardiac repair. *J Mol Cell Cardiol* 40: 736–45.
- Kofidis T, de Bruin JL, Yamane T, Balsam LB, Lebl DR et al. (2004) IGF promotes engraftment, differentiation, and functional improvement after transfer of ESCs for myocardial restoration. *Stem Cells.* 22: 1239–1245.
- Kanemitsu N, Tambara K, Premaratne GU, Kimura Y, Tomita S, et al. (2006) IGF-1 enhances the efficacy of myoblast transplantation with its multiple

## Supporting Information

**Figure S1 Plasmid sequence of human SDF-1 $\alpha$ , HGF, IGF-1, and VEGF used for transgenic overexpression of the respective growth factor ligand in Sca-1<sup>+</sup>.**

(DOC)

**Table S1 Primers for conventional RT-PCR.**

(DOC)

**Table S2 Primary antibodies used for western blotting and immunohistochemistry.**

(DOC)

**Text S1 Supporting methods.**

(DOC)

## Author Contributions

Conceived and designed the experiments: NL ZP MA. Performed the experiments: NL ZP. Analyzed the data: NL ZP MA. Contributed reagents/materials/analysis tools: MA. Wrote the paper: NL ZP MA.

functions in the chronic myocardial infarction rat model. *J Heart Lung Transplant.* 25: 1253–1262.

- Jayasankar V, Woo YJ, Pirolli TJ, Bish LT, Berry MF et al. (2005) Induction of angiogenesis and inhibition of apoptosis by hepatocyte growth factor effectively treats posts ischemic heart failure. *J Card Surg* 20: 93–101.
- Gherardi E, Stoker M (1991) Hepatocyte growth factor—scatter factor: Mitogen, motogen, and met. *Cancer Cells* 3: 227–232.
- Ono K, Matsumori A, Shioi T, et al. (1997) Enhanced expression of hepatocyte growth factor/c-Met by myocardial ischemia and reperfusion in a rat model. *Circulation*; 95: 2552–2558.
- Yasuda S, Goto Y, Baba T, et al. (2005) Enhanced secretion of cardiac hepatocyte growth factor from an infarct region is associated with less severe ventricular enlargement and improved cardiac function. *J Am Coll Cardiol* 36: 115–121.
- Ellison GM, Torella D, DelleGrottaglie S, Perez-Martinez C, Perez de Prado A et al. (2011) Endogenous Cardiac Stem Cell Activation by Insulin-Like Growth Factor-1/Hepatocyte Growth Factor Intracoronary Injection Fosters Survival and Regeneration of the Infarcted Pig Heart. *J Am Coll Cardiol.* 58: 977–86.
- Zisa D, Shabbir A, Suzuki G, Lee T. (2009) Vascular endothelial growth factor (VEGF) as a key therapeutic trophic factor in bone marrow mesenchymal stem cell-mediated cardiac repair. *Biochem Biophys Res Commun.* 390: 834–8.
- Gao F, He T, Wang H, Yu S, Yi D, Liu W, Cai Z. (2007) A promising strategy for the treatment of ischemic heart disease: Mesenchymal stem cell-mediated vascular endothelial growth factor gene transfer in rats. *Can J Cardiol.* 23: 891–8.
- Song YH, Gehmert S, Sadat S, Pinkernell K, Bai X, Matthias N, Alt E. (2007) VEGF is critical for spontaneous differentiation of stem cells into cardiomyocytes. *Biochem Biophys Res Commun.* 354(4): 999–1003.
- Oswald J., Boxberger S., Jorgensen B., Feldmann S., Ehninger G et al. (2004) Mesenchymal stem cells can be differentiated into endothelial cells in vitro *Stem Cells*, 22: 377–384.
- Ghadge SK, Mühlstedt S, Ozcelik C, Bader M. (2011) SDF-1 $\alpha$  as a therapeutic stem cell homing factor in myocardial infarction. *Pharmacol Ther.* 129: 97–108.
- Yu JX, Huang XF, Lv WM, Ye CS, Peng XZ et al. (2009) Combination of stromal-derived factor-1alpha and vascular endothelial growth factor gene-modified endothelial progenitor cells is more effective for ischemic neovascularization. *J Vasc Surg.* 50: 608–16.
- Gnecchi M, Zhang Z, Ni A, et al. (2008) Paracrine mechanisms in adult stem cell signaling and therapy. *Circ Res* 103: 1204–1219.
- Fedak PW. (2008) Paracrine effects of cell transplantation: modifying ventricular remodeling in the failing heart. *Semin Thorac Cardiovasc Surg* 20: 87–93.
- Uemura R, Xu M, Ahmad N, Ashraf M. (2006) Bone marrow stem cells prevent left ventricular remodeling of ischemic heart through paracrine signaling. *Circ Res* 98: 1414–1421.
- Vu TH, Werb Z. (2000) Matrix metalloproteinases: effectors of development and normal physiology. *Genes Dev* 14: 2123–2133.
- Heissig B, K Hattori, S Dias, M Friedrich, B Ferris et al. (2002) Recruitment of stem and progenitor cells from the bone marrow niche requires MMP-9 mediated release of kit-ligand. *Cell* 109: 625–637.

34. Hao Q, Su H, Palmer D, Sun B, Gao P et al. (2011) Bone marrow-derived cells contribute to vascular endothelial growth factor-induced angiogenesis in the adult mouse brain by supplying matrix metalloproteinase-9. *Stroke*. 42: 453–8.
35. Shi Y., Massague J. (2003) Mechanisms of TGF-beta signaling from cell membrane to the nucleus *Cell* 113: 685–700.
36. Shahab M Danesh, Alethia Villasenor, Diana Chong, Carrie Soukup, Ondine Cleaver (2009) BMP and BMP receptor expression during murine organogenesis *Gene Expression Patterns* 9: 255–265.
37. David M Wiley, Suk-Won Jin. (2011) Bone Morphogenetic Protein functions as a context-dependent angiogenic cue in vertebrates. *Seminars in Cell & Developmental Biology* 22 : 1012–1018.
38. Langenfeld EM, Langenfeld J (2004) Bone morphogenetic protein-2 stimulates angiogenesis in developing tumors. *Mol Cancer Res* 2: 141–9.
39. de Jesus Perez VA, Alastalo TP, Wu JC, Axelrod JD, Cooke JP et al. (2009) Bone morphogenetic protein 2 induces pulmonary angiogenesis via Wnt-beta-catenin and Wnt-RhoA-Rac1 pathways. *J Cell Biol* 184: 83–99.
40. Rothhammer T, Bataille F, Spruss T, Eissner G, Bosserhoff AK. (2007) Functional implication of BMP4 expression on angiogenesis in malignant melanoma. *Oncogene* 26: 4158–70.
41. Fan BS, Lou JY (2011) Enhancement of angiogenic effect of co-transfection human NGF and VEGF genes in rat bone marrow mesenchymal stem cells. *Gene*. 485: 167–71.
42. Meloni M, Caporali A, Graiani G, Lagrasta C, Katare R et al. (2010) Nerve growth factor promotes cardiac repair following myocardial infarction. *Circ Res*. 106: 1275–84.
43. Maulik N, Thirunavukkarasu M. (2008) Growth factor/s and cell therapy in myocardial regeneration. *J Mol Cell Cardiol*. 44: 219–27.
44. Virag JA, Rolle ML, Reece J, Hardouin S, Feigl EO, Murry CE (2007) Fibroblast growth factor-2 regulates myocardial infarct repair: effects on cell proliferation, scar contraction, and ventricular function. *Am J Pathol*. 171: 1431–40.
45. Rosenblatt-Velin N, Lepore MG, Cartoni C, Beermann F, Pedrazzini T. (2005) FGF-2 controls the differentiation of resident cardiac precursors into functional cardiomyocytes. *J Clin Invest* 115: 1724–33.
46. Holmes C, Stanford WL. Stem cell antigen -1: Expression, Function, and Enigma. *stem cells* 2007. 25: 1339–1347.
47. J Kajstura, M Rota, B Whang, S Cascapera, T Hosoda, C et al. (2005) Bone marrow cells differentiate in cardiac cell lineages after infarction independently of cell fusion *Circ Res* 96: 127–137.
48. M Alvarez-Dolado, R Pardo, J.M Garcia-Verdugo, J.R Fike, H.O Lee, K et al. (2003) Fusion of bone-marrow-derived cells with Purkinje neurons, cardiomyocytes and hepatocytes *Nature* 425: 968–97.
49. Chavakis E, Koyanagi M, Dimmeler S. (2010) Enhancing the Outcome of Cell Therapy for Cardiac Repair Progress From Bench to Bedside and Back. *Circulation*. 121(2): 325–35.
50. Anversa P, Kajstura J, Leri A, Bolli R. (2006) Life and death of cardiac stem cells: a paradigm shift in cardiac biology. *Circulation*. 113(11): 1451–63.