

ICAMI Regulates the Development of Gastric Cancer and May Be a Potential Biomarker for the Early Diagnosis and Prognosis of Gastric Cancer

This article was published in the following Dove Press journal:
Cancer Management and Research

Songda Chen¹
Shan Pan¹
Huijie Wu¹ 
Jingyuan Zhou¹
Yueli Huang¹
Shuai Wang²
Aiqun Liu¹

¹Department of Endoscopy, Guangxi Medical University Cancer Hospital, Nanning, Guangxi, People's Republic of China; ²Department of Colorectal Anal Surgery, Guangxi Medical University Cancer Hospital, Nanning, Guangxi, People's Republic of China

Background: Gastric cancer (GC) is among the most common forms of cancer affecting the digestive system. This study sought to identify hub genes regulating early GC (EGC) in order to explore their potential for early diagnosis and prognosis of patients.

Methods: We utilized a publically available dataset from the Gene Expression Omnibus database (GSE55696). Differences between EGC and LGIN with respect to gene expression were compared using the limma software. Identified differentially expressed genes (DEGs) were subjected to gene ontology (GO) and pathway enrichment analyses with the DAVID application, and the STRING website and Cytoscape software were used to construct a protein-protein interaction (PPI) network incorporating these DEGs. This network was in turn used to identify hub genes among selected DEGs, which were analyzed with the Kaplan-Meier Plotter database. In addition, Western blotting, qRT-PCR, immunohistochemistry, and UALCAN were all employed to validate the relationship between the expression of these genes and GC patient prognosis.

Results: A total of 482 DEGs were identified, with GO analyses indicating an increase in the expression of genes linked with the development of cancer. Pathway analyses also indicated that these genes play a role in certain cancer-related pathways. The PPI network highlighted four potential hub genes, of which only ICAM1 was linked to a poor GC patient prognosis. This link between ICAM1 and GC patient outcomes was confirmed via UALCAN, Western blotting, immunohistochemistry, and qRT-PCR.

Conclusion: ICAM1 may therefore modulate tumor progression in GC, thus potentially representing a valuable prognostic and diagnostic biomarker of EGC.

Keywords: bioinformatics analysis, gastric cancer, early diagnosis, ICAM1, biomarker

Introduction

Gastric cancer (GC) remains one of the most common forms of digestive system tumors, and the third leading cancer-associated cause of death according to GLOBOCAN2018. Approximately 10,000,000 new GC cases were diagnosed in 2018, with 783,000 people having died of the disease, which occurs twice as often in men as it does in women.¹ GC is the third most common form of cancer in China and the second most prominent cause of cancer-associated mortality.² This mortality often results from a failure to detect early GC (EGC), as current diagnostic strategies primarily depend upon endoscopic examination, imaging, and serology,³⁻⁵ with most analyzed patients already being in the advanced stages of disease when subjected to these analyses. In China, GC has a 5-year survival rate of 35.9%, which is lower than

Correspondence: Aiqun Liu
Department of Endoscopy, Guangxi Medical University Cancer Hospital, Nanning, Guangxi, People's Republic of China
Email liuaiqun_2004@163.com

rates in Japan and South Korea (60.3% and 68.9%, respectively). This is largely explained by the much higher rates of EGC diagnosis and detection in Korea and Japan.^{6,7} As such, there is a clear need for the more reliable detection of EGC through the use of novel biomarkers of this disease.

A common current strategy for analyzing tumor-associated gene expression depends upon the use of microarray and bioinformatics analytical approaches. Through such strategies, Li et al identified CLO4A1 as a potential biomarker of recurrent GC.⁸ Yan et al also found COL1A1, MMP2, FN1, TIMP1, SPARC, COL4A1, and ITGA5 to all represent potential GC biomarkers.⁹ These biomarker identification strategies, however, largely depend upon comparisons between normal tissue and advanced GC tissue samples, making them of limited utility when guiding EGC diagnosis. The WHO reclassified gastric cancers in 2010 into low-grade intraepithelial neoplasia (LGIN), high-grade intraepithelial neoplasia (HGIN), EGC, and GC categories, although controversy regarding the definition of these different disease states remains.¹⁰ For example, researchers in Japan posit that as HGIN tumors exhibit dysplasia, they are better classified as instances of EGC.¹¹ Such discrepancies may further explain the increased rates of EGC detection in Japan. In the present study, to better identify genes associated with the earliest stages of GC differentiation and progression, we classified HGIN as a form of EGC in line with these Japanese criteria, and we then compared gene expression between EGC and LGIN in a publically available dataset in an effort to detect differentially expressed genes (DEGs) linked to GC patient outcomes.

For this study, we utilized the available GSE55696¹² dataset uploaded in the Gene Expression Omnibus (GEO, <https://www.ncbi.nlm.nih.gov/>) database. This dataset incorporated gene expression results from endoscopic biopsy tissue samples from patients diagnosed with LGIN, HGIN, or EGC. After pooling HGIN and EGC data, we used the limma package as a means of identifying DEGs between the EGC and LGIN groups. The resultant DEGs were then subjected to gene ontology (GO) and pathway enrichment analyses to better explore their biological roles. We further generated a protein-protein interaction (PPI) network for these genes to highlight central hub genes. We then used the Kaplan-Meier Plotter (<http://kmplot.com/analysis/>) database to assess how these hub genes were linked to GC patient outcomes. We additionally classified the clinical relevance of these hub genes based upon an online database in an effort to

identify potentially novel biomarkers of EGC that may permit earlier patient diagnosis and prognostic planning.

Materials and Methods

Microarray Data

GSE55696 data were downloaded from GEO, which compiles large amounts of publically-available gene expression data, including high-throughput microarray data.¹³ The chosen study had employed the GPL6480 Agilent-014850 Whole Human Genome Microarray 4x44K G4112F for their analyses, and included a total of 19 LGIN, 20 HGIN, 19 EGC, and 19 chronic gastritis tissue samples.

DEG Identification

After downloading the GSE55696 series matrix file, we omitted chronic gastritis samples from further analyses owing to their unclear definition, and we combined EGC and HGIN samples prior to comparing this aggregate EGC group to the LGIN group using the limma, impute, and heat map R packages derived from bioconductor (<http://bioconductor.org/biocLite.R>). In cases where there were multiple probes for a single gene, mean values were used. DEGs were those with $P < 0.05$ in a *t*-test and a $[\logFC] > 1$.

Functional and Pathway Enrichment Analyses

GO analyses allow for exploration of the functional roles of sets of genes,¹⁴ while KEGG analyses allow for exploration of the pathways in which such genes may function.¹⁵ We conducted these two forms of analyses on our identified DEGs using the DAVID (<https://david.ncifcrf.gov/>) tool, which allowed for comprehensive functional annotation.¹⁶ Significant enrichment was said to be evident when $P < 0.05$.

Hub Gene Identification

The PPI network was constructed based on predicted interactions in the online STRING database (<https://string-db.org/>).¹⁷ We uploaded all 482 DEGs in the present study to yield an initial PPI, and then visualized this network using Cytoscape Version 3.7.1. Next, cytoHubba was used to rate the network, with the top 10 genes rated according to their Degree, Closeness, and Betweenness scores being the candidate hub genes.

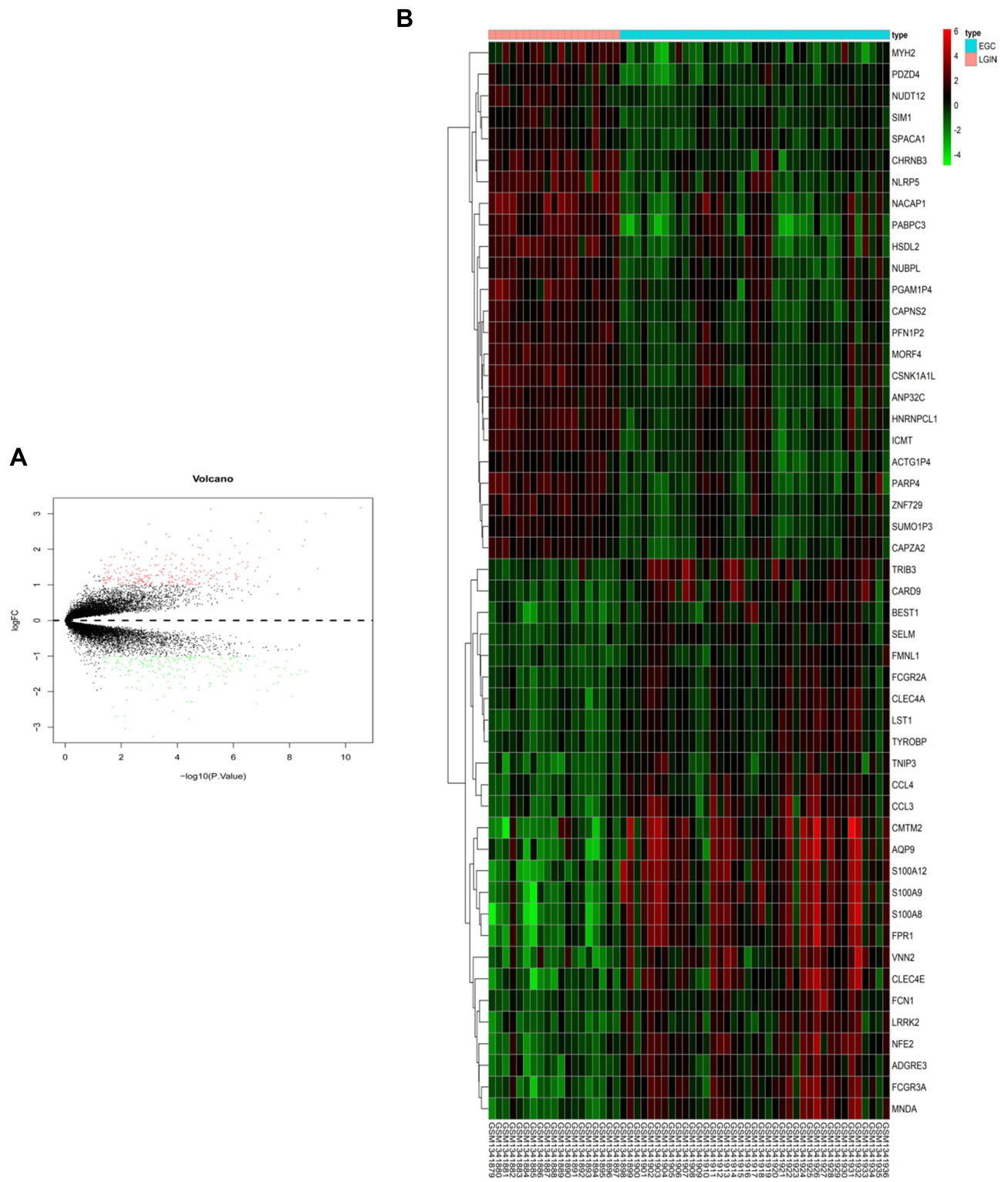


Figure 1 DEG selection and hierarchical clustering analysis. **(A)** DEGs are arranged in a volcano plot, with the vertical and horizontal axes corresponding to logFC (fold change) and -log₁₀ (p value). Green and red dots correspond to DEGs, whereas genes that were not DEGs are represented by black dots. **(B)** The top 50 DEGs were arranged in a heat map, with genes on the horizontal axis and samples along the vertical axis. DEGs could be divided into cancer and non-cancer groups. Up- and down-regulated DEGs are shown in red and green, respectively.

Hub Gene Survival Analyses

To analyze the relevance of identified hub genes to GC patient survival, we separated patients into hub gene-high and -low groups based on median expression levels, and then used the online Kaplan-Meier Plotter database to compare GC patient outcomes.¹⁸ Differences in survival based on hub gene expression were assessed via Log rank test, with $P < 0.05$ as the significance threshold. Using this

approach we were able to identify those genes associated with a poorer GC prognosis.

ICAM1 Hub Gene Validation in GC Using UALCAN

To confirm the relevance of the identified hub gene ICAM1 in GC, we employed the online UALCAN (<http://ualcan.path.uab.edu/>) tool that allows for comparisons of gene

Table 1 A Total of 482 DEGs Were Identified from the GSE55696 Dataset, Including 270 Up-Regulated DEGs and 212 Down-Regulated DEGs in EGC Tissues, Compared to LGIN Tissues

DEGs	Gene Symbol [#]
Up-Regulated	S100A12, S100A8, S100A9, LST1, FPR1, FCGR3A, MNDA, NFE2, FCGR2A, CLEC4E, SELM, CMTM2, ADGRE3, AQP9, CCL4, FCN1, TNIP3, FMNLI, TRIB3, VNN2, TYROBP, BEST1, LRRK2, CCL3, CARD9, CLEC4A, FGR, LILRB3, FAM49A, CFP, CXCR1, G0S2, FAM65B, LILRB2, CMTM7, LINC-PINT, RNASE2, PYGL, FCGR1B, NCF2, CXCR2P1, NCF1, ITIH4, GBP5, IL7R, LY96, SPI1, IL21R, OSM, CSF3R, PPBP, IGSF6, LGALS2, SOD2, CXCR4, DEFA3, ACSS3, ADAM8, SNHG6, TREM1, ADGRE2, CAMP, TNFAIP2, CD28, UAP1L1, APOERGS18, HBD, DUOXAI, HBA2, IFITM3, CLEC4D, FADS1, SLC2A6, FSTL3, MMP9, GLT1D1, CXCR2, S1PR4, CXCL2, ICAM1, LINC01410, SIGLEC10, KLHL17, TLR8, PLEK, CTHRC1, CSF2RA, HBA1, PTPRC, RAB42, BCAS4, MMP25, LINC01094, TNFAIP6, HLA-DPBI, PLTP, PAQR5, CCL3L3, MILR1, FKBP10, C5ARI, MFAP2, LOC100507460, MCEMPI, FAMI98A, NEU1, RGS1, LOC107987020, TNFRSF10C, ADAMDECI, PABPC1L, SPPI, TPM2, LAMP3, PTGS2, LY6E, RELL2, ZBTB32, REC8, PTGDS, AIM2, PDPN, SPRR1B, NNMT, EGFL6, SRGN, CXCL1, ITGA4, PDZK1IP1, APOCI, LCN2, HOXC10, HBB, EGR3, LOC284454, HLA-DRB1, BAAT, CCR7, MUCL1, LRGUK, FIGLRR39, PARVB, LILRA2, C3, DPYSL4, CXCL3, KRT23, HOXC13, FPR2, MIR503HG, CCL20, C4B, ALAS2, PP7080, TRAT1, ZBPI, BMP7, LINC01296, PTCHD1, P2RX5, IRX2, CYB5R1, CATSPERB, LOC155060, CD70, UCHL1, LOC339803, SAA1, KRT6B, CTSW, BIRC3, HLA-DRB3, SPNS1, IFI6, SLC22A31, CARD14, ABCA12, KLHL6, ATP6V0A4, KCNIP3, FBXO2, INHBA, TMEM213, CLDN6, VEPHI, PLA2G7, ZNF556, TSPOAPI-AS1, CD72, CYR61, DUOX1, CP, IGHG4, HOXC11, BNIP3, ZBED2, CDIPT-AS1, LYPD2, CD79B, CYP2A7P1, CKLF-CMTM1, CHI3L2, CXCL9, LINC00886, IDO1, SAA4, CHI3L1, ATP6V1C2, PF4, KRT6C, UBD, IFI44L, SYNDIG1, PI3, COL8A1, CLECL1, CHRDL2, CETP, TNFRSF6B, PRAME, HBG1, IGF2BP3, DUOX2, FOXC1, POTE, FGG, HOXC-AS3, POTE, CXCL13, SMKR1, LGSN, POTE3, IL19, IL13RA2, HS3ST2, PCOLCE2, APOBEC3A, FXDY4, ACTL8, GTSFI, CD19, DSCR8, DDX43, KRT6A, SERPINA5, LY6K, GABRB3, KIAA1324L, CT45A5, ST8SIA6-AS1, SIX1, FOSB, MAGEA9, SERPINA3, OSR2, FOLR1, CSAG1, CTAG2, MAGEA1, DKK1, BPIFB1, OGDHL, SCRG1, BEX2, CRABP2, FAM25A, PDILT, TNNC1
Down-Regulated	CAPNS2, PFN1P2, HNRNPCL1, NACAPI, CHRNB3, SUMO1P3, LOC100507351, MORF4, CSNK1A1L, ACTG1P4, PARP4, ZNF729, NLRP5, ICMT, HSDL2, NUDT12, MYH2, PABPC3, ANP32C, PGAM1P4, SIM1, SPACA1, CAPZA2, PDZD4, NUBPL, GABRR3, KRT35, GPR12, PRSS56, KRT8P41, LOC148709, ODF4, SCRT2, ATP8B5P, EEFD1P4, CXXC4, TAGLN3, CBWD6, UGT2A3, ZNF367, ANXA2P3, CXADR2, CUBN, CTAGE3P, GALC, KLKB1, PPIAP30, CCDC68, CTAGE6, KRT19P2, MYT1, DRD2, CRYBB3, ITGA2, RTN4RL2, RPS2P45, DOPEY2, LOC100128164, SVOP, ADAMTS19, PCSK1N, MKRN9P, MS4A8, GRXCR1, ZNF259P1, BSN, PCSK1, FAMI197Y2P, NMUR2, LOC105370109, FABP5, MMD2, RNF113B, RTP5, OTC, OR2C1, LOC643549, NUDT16P1, RPL23AP32, TRIM49, HTR3D, NOL4, DAGLA, TACR1, ELOVL4, CORIN, SCG5, SCG2, SLC7A8, LOC101927000, MAGEE2, LINC00326, SPAG1, TMPRSS6, CTAGE10P, HNRNPAPI27, GCNT2, RFX6, ADH1A, LOC729652, LYPD4, SCGB1D2, MYSM1, EDN3, INSM1, KCNMB2, CACNG2, KCN16, FEV, SUCNR1, DSCR4, IL3, CTSG, NHLH2, HMP19, CNTF, ARX, SYT4, ANO8, COL17A1, ARVC, TMEM155, ADAM7, PROKR2, SCG3, UGT2B10, SCGN, LCE3D, C11orf40, RPRML, LOC729080, SST, OVCHI-AS1, VILI, ANXA2, OR10H1, MLN, PAX6, ABO, RGS4, GLDN, OR1N2, SHANK1, ALDOC, LRTM2, ABCC11, CHGB, TENM2, UGT2B11, PROX1, GPRC6A, NCKAP5, OR8H1, NPY6R, NR2E1, GSTA3, PLCXD3, TUBB2B, GNG3, HRG, SCGB1D1, HEPACAM2, KCNJ6, CA9, WSCD2, ADH6, GUSBP10, CNDP1, TINAG, CEACAM3, NKX6-3, TM6SF2, FBP2, CASR, SYNPR, KRT20, TMPRSS15, ODF3L1, TEK4P2, CCL13, TM4SF4, CCL25, LYVE1, AK5, CLDN10, PTPN20, GAST, BTNL8, ZSCAN4, TONSL, TRIM23, C20orf85, FAMI189A1, SLC38A11, DACHI, SLC18A1, GCG, NAT2, GPA33, GSTA1, ALPI, AICF, LHFPL3-AS2, CARTPT, CEACAM6, CHST5, SLC10A2, UPK1B, KLK12, GALNT8

Note: [#]It is set at $p < 0.05$ and $|\text{fold change}| > 1.0$ as cut-off criteria.

expression data and clinical data across 31 forms of cancer.¹⁹ Differences in gene expression were compared between groups via t-tests, with $P < 0.05$ as the significance threshold, and we explored how ICAM1 expression related to GC patient clinical findings.

qRT-PCR

For qRT-PCR, 30 paired GC and adjacent normal tissue samples surgically collected from 2013–2014 at Guangxi Medical University Cancer Hospital were used. RNAiso plus (9108, TaKaRa, USA) was used for RNA extraction, followed by use of a cDNA reverse transcription kit (RR047A; TaKaRa, USA). Primers used were: ICAM1 forward, 5'-CAGGAGCAACTTCTCCTGC-3'; ICAM1 reverse, 5'-ACCGGAATGACAATGTCCAGGATA-3'.²⁰ A SYBR Green kit (RR820; TaKaRa, USA) was used for qRT-PCR on an ABI7500 device. Cycle settings were: 30s at 95°C, then 40 cycles of 15 s at 95°C, and 34 s at 60°C. Triplicate samples were used and averaged, with β -actin as a reference control.

Western Blotting

Tissue samples were homogenized in RIPA buffer (p00136, Beyotime Biotechnology, China) containing PMSF (ST506, Beyotime Biotechnology). Samples were then boiled in loading buffer (5 \times) (P0015L, Beyotime Biotechnology), after which samples were electrophoretically separated on SDS-PAGE 4–10% Bis-Tris gels prior to transfer to PVDF membranes (IPVH00011, Solarbio, China). Next, 5% skim milk powder was used to block membranes, followed by overnight incubation with rabbit monoclonal anti-ICAM1 (1:1000, ab53013; Abcam, Cambridge, UK) or anti- β -actin (1:1000, Sigma, China). Then, a goat anti-rabbit IgG (H + L) antibody (1:1000, A0208, Beyotime Biotechnology) was used to detect primary antibodies, with a ChemiDoc MP system (Bio Rad Laboratories, Inc.) used for chemiluminescent protein visualization.

Immunohistochemistry

Tissue samples from chronic superficial gastritis, LGIN, HGIN, EGC, and GC patients collected between 2018 and 2019 and held in the Guangxi Medical University Cancer Hospital specimen library were used for IHC experiments. The same ICAM1 antibody used for Western blotting was used for IHC at a 1:50 dilution, with a biotin donkey-anti-rabbit antibody (AP182B) (1:500; Millipore, Billerica, MA, USA) used for secondary detection. The IHC staining procedure was as follows: samples were warmed at 60°C for 4h,

dewaxed with xylene, rehydrated using an ethanol gradient, treated EDTA (50x) for antigen repair, subjected to an endogenous peroxidase blocker (PV-6000, BAOXIN BIO, China), and then warmed for 10 min to 37°C prior to rinsing using PBS. Samples were then probed overnight with primary antibodies at 4°C, warmed for 15 min to 37°C, rinsed in PBS, stained with secondary antibody for 20 min at 37°C. DAB was used for development of staining, and samples were then counterstained with hematoxylin, differentiated with hydrochloric acid alcohol, dehydrated, dried, and sealed before analysis.

Table 2 The Top 15 Significant Enriched GO Terms of Up/Down-Regulated DEGs

Category	Term	Count	P value
Up-Regulated			
BP	Inflammatory response	39	1.46E-22
CC	Extracellular region	70	8.42E-20
BP	Immune response	37	4.18E-19
CC	Extracellular space	58	6.39E-16
BP	Neutrophil chemotaxis	14	3.47E-12
BP	Chemokine-mediated signaling pathway	14	9.28E-12
BP	Chemotaxis	16	8.76E-11
MF	Chemokine activity	11	5.31E-10
BP	Response to lipopolysaccharide	16	5.73E-09
BP	Cellular defense response	11	8.94E-09
CC	Plasma membrane	91	4.69E-08
BP	Innate immune response	23	8.17E-08
BP	Cell surface receptor signaling pathway	17	9.24E-07
BP	Cell chemotaxis	9	2.40E-06
BP	Defense response to bacterium	12	4.11E-06
Down-regulated			
MF	Hormone activity	7	2.12E-04
BP	Peptide hormone processing	4	3.81E-04
CC	Secretory granule	6	5.89E-04
BP	Fibrinolysis	4	8.74E-04
BP	Neuropeptide signaling pathway	6	0.002309
BP	Cell-cell signaling	9	0.002309
BP	Type B pancreatic cell differentiation	3	0.002847
BP	Metabolic process	7	0.004416
BP	Feeding behavior	4	0.004954
CC	Secretory granule lumen	3	0.005187
CC	Extracellular space	23	0.005855
BP	Chemical synaptic transmission	8	0.006493
BP	G-protein coupled receptor signaling	17	0.00795
Pathway			
MF	Serine-type endopeptidase activity	8	0.008681
BP	Positive regulation of neural precursor Cell proliferation	3	0.009102

Results

DEG Identification

In order to screen for meaningful biomarkers in EGC, using the R limma package and the $p < 0.05$ and $[\log_2FC] > 1$ cut-off criteria, we detected a total of 482 DEGs when comparing the EGC and LGIN datasets (Figure 1A). Of these genes, 270 were upregulated and 212 were downregulated (Table 1). We

further generated a heat map of the top 50 DEGs using an appropriate R package (Figure 1B).

GO and KEGG Analyses

In order to clarify the role of these DEGs in the progression of GC, we needed to immediately predict the functional role of these genes. We next conducted GO and KEGG pathway

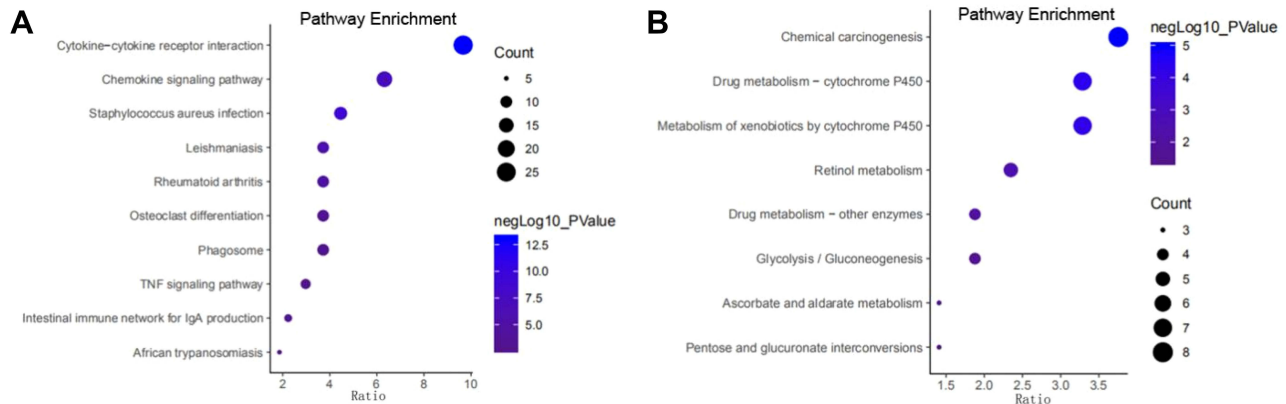


Figure 2 KEGG pathways enriched for DEGs. P-values are represented by the coloration of individual points in the scatterplot, with point size corresponding to the number of counts. **(A)** KEGG pathways associated with up-regulated DEGs. **(B)** KEGG pathways associated with down-regulated DEGs. Scatterplots were constructed using the online website (<http://www.ehbio.com/ImageGP/index.php/Home/Index/index.html>).

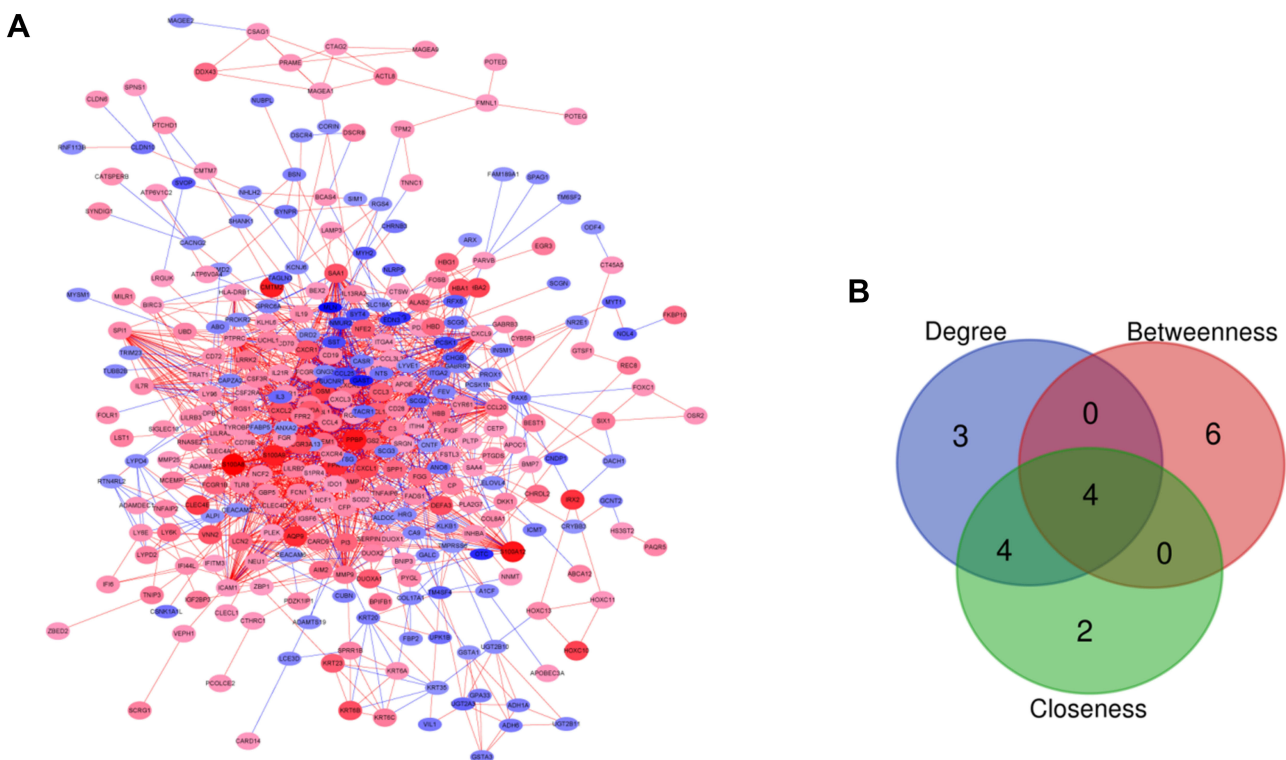


Figure 3 PPI network and candidate hub genes. **(A)** PPI network of identified DEGs. Up- and down-regulated DEGs are represented by red and blue nodes, respectively, with node size corresponding to \log_2FC . Red and blue lines correspond to positive and negative correlations, respectively. **(B)** Venn diagram of four candidate hub genes from the top ten as determined according to Degree, Betweenness, and Closeness parameters. An online tool was used for Venn diagram construction (http://bioinformatics.psb.ugent.be/cgi-bin/Liste/Venn/calculate_venn.html).

analyses on these 482 DEGs. GO analyses revealed upregulated DEGs to be enriched for terms including “inflammatory response”, “extracellular region”, “immune response”, “extracellular space”, and “neutrophil chemotaxis” ($P < 0.05$) (Table 2). In contrast, downregulated DEGs were enriched for terms including “hormone activity”, “peptide hormone processing”, “secretory granule”, “fibrinolysis” and “neuropeptide signaling pathway” ($P < 0.05$) (Table 2). In the pathway enrichment analyses, upregulated DEGs were shown to be enriched for pathway terms including “cytokine–cytokine receptor interaction”, “chemokine signaling pathway”, and “staphylococcus aureus infection” ($P < 0.05$) (Figure 2A), whereas downregulated DEGs were enriched for pathway terms including “chemical carcinogenesis”, “metabolism of xenobiotics by cytochrome P450”, and “drug metabolism – cytochrome P450” ($P < 0.05$) (Figure 2B).

PPI Network Analysis

It is well known that a gene can directly or indirectly affect another gene to exert a biological role. After clarifying the functions of these genes, we were more concerned about genes that play a pivotal role. We next used the STRING and Cytoscape tools to construct and visualize a PPI network for these DEGs. The final network was made up of 316 nodes and 1816 edges following irrelevant node deletion (Figure 3A), with 166 DEGs not falling within this network. The cytoHubba plugin was next used to rate the entire network, with the top 10 genes based on Degree, Closeness and Betweenness identified as potential hub genes (Table 3). Based on the overlap between these three profiles (Figure 3B), we identified 4 overlapping potential hub genes:

Table 3 The Top Ten Genes in Each of the Three Main Scores

Degree		Closeness		Betweenness	
Node Name	Score	Node Name	Score	Node Name	Score
TLR8	62	TLR8	162	SPP1	9024.657
PTPRC	55	CXCR4	159.36667	SST	7393.812
CXCR4	53	CXCL1	159.11667	DRD2	6805.501
C3	52	MMP9	158.95	PTPRC	6554.313
MMP9	52	PTPRC	158.63333	MMP9	6510.665
CCL4	51	C3	157.35	ICAM1	6220.507
CXCL1	50	CCL4	157.08333	TLR8	5657.862
FPR2	48	ICAM1	156.2	IL13RA2	4956.119
SAA1	47	PPBP	153.31667	APOE	4947.338
ICAM1	46	CCL20	153.30952	MAGEA1	4312.797

MMP9 (matrix metalloproteinase 9), ICAM1 (intercellular adhesion molecule 1), TLR8 (toll-like receptor 8), and PTPRC (protein tyrosine phosphatase receptor type C).

Hub Gene Survival Analyses

However, based on the practicality of clinical guidance, we needed to find genes in these hub genes that could promote gastric cancer and could be used for survival prediction. We next used the Kaplan-Meier Plotter database to explore how these hub genes related to GC patient survival. Of these genes, we found all 4 to be significantly differentially expressed ($p < 0.05$), but only elevated ICAM1 expression was linked to a poorer GC patient prognosis (HR=1.51, 95% CI:1.26–1.81, $P=9.6e-06$) (Figure 4).

The Association Between Elevated ICAM1 and GC Patient Clinicopathological Features

Although the application of bioinformatics has given us directions, we still needed to combine sample verification to provide guidance for clinical research. Using IHC, we found ICAM1 expression in GC tissues to be primarily localized to cell membranes (Figure 5A and B). We further found ICAM1 to be highly expressed in GC tissue samples (Figure 5B and C), consistent with TCGA findings ($p < 0.05$; Figure 5D). To confirm that ICAM1 expression was linked to the clinical features of GC, we next explored this relationship in the online UACLAN database. We found ICAM1 expression to be unrelated to gender ($p=7.740800E-1$; Figure 5E) or race ($p=6.050600E-01$, $p=4.357800E-01$, $p=9.113600E-01$) (Figure 5F).

Discussion

GC remains one of the most common types of cancer in China,²¹ and yet owing to its lack of early-stage symptoms patients are often not diagnosed until the disease is already significantly advanced, leading to a poor prognosis.²² In a retrospective analysis of GC patients in Japan, a 5-year survival rate of 71.1% was detected among 118,367 GC patients following surgical resection, with respective 5-year survival rates for those with pathological IA, IB, II, IIIA, IIIB, and IV GC of 91.5%, 83.6%, 70.6%, 53.6%, 34.8%, and 16.4%.²³ This suggests that the best means of improving GC patient outcomes is by detecting GC while it is in its early stages. By better exploring the molecular mechanisms governing the development of GC, it will be possible to better detect and diagnose EGC. Previous research has highlighted

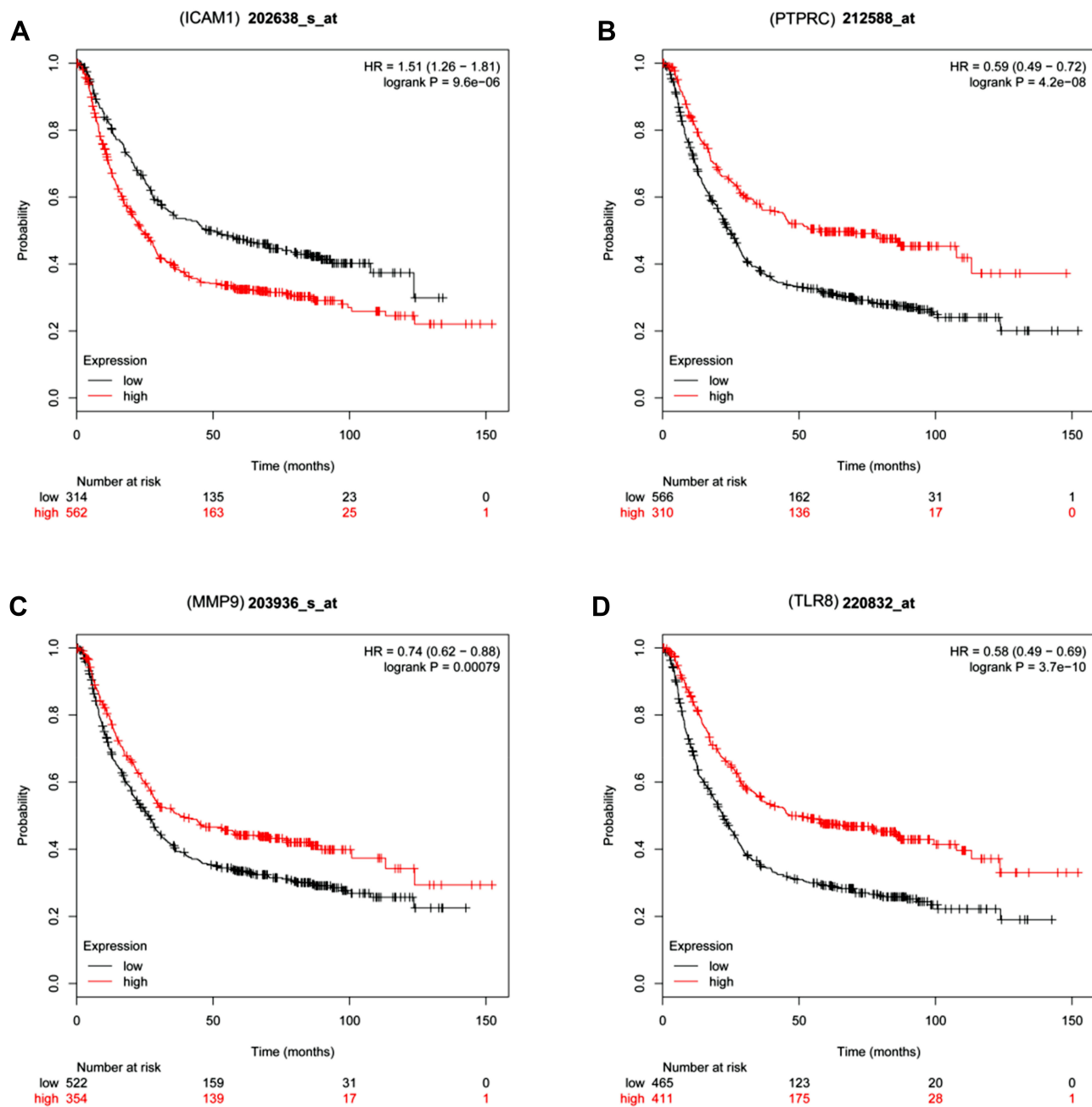


Figure 4 GC patient survival analyses for the four candidate hub genes. Red and black lines represent patients with high and low expression levels of the indicated hub gene, respectively. **(A)** ICAM1 survival analysis in patients with GC **(B)** PTPRC survival analysis in patients with GC. **(C)** MMP9 survival analysis in patients with GC. **(D)** TLR8 survival analysis in patients with GC.

a number of genes associated with GC.^{24–26} The specific molecular mechanisms governing this disease, however, are complex, and as such further data mining efforts are needed to identify relevant candidate biomarkers for GC diagnosis.

In this study, we used the GSE55696 dataset to explore gene expression in EGC, comparing differences between EGC (pooled with HGIN) and LGIN and thereby identifying 270 and 212 up- and down-regulated genes, respectively.

We conducted GO analyses to gain better functional insights into the roles of the DEGs detected through this approach. This strategy revealed upregulated DEGs to be enriched for GO terms including “inflammatory response”, “extracellular region”, “immune response”, “extracellular space”, and “neutrophil chemotaxis”. Inflammation is a very important factor linked with GC progression and prognosis.^{27,28} The immune response is also associated with GC to some degree.²⁹ We further found downregulated

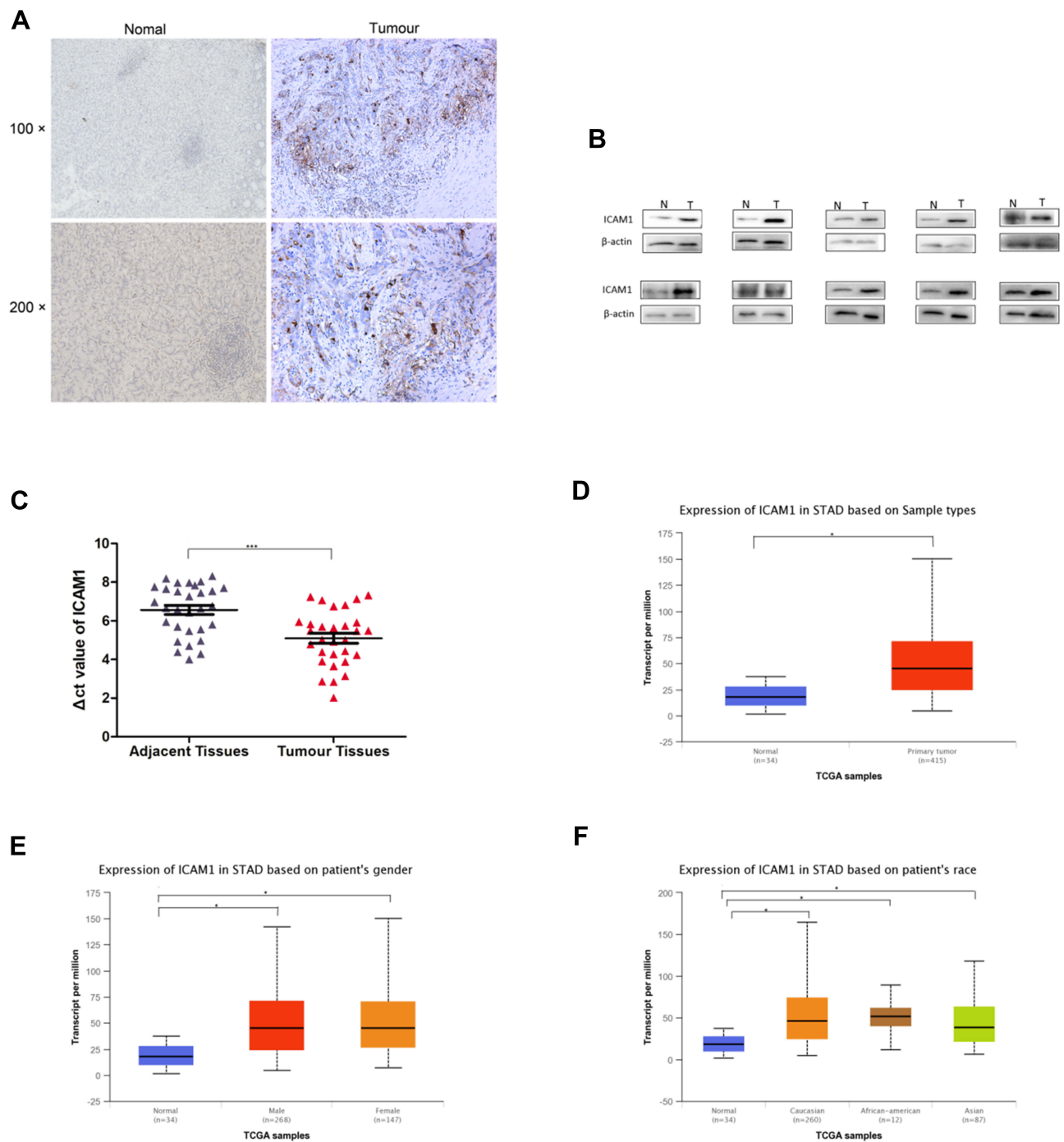


Figure 5 ICAM1 expression in GC patients. **(A)** Immunohistochemical localization of ICAM1 in GC. **(B)** Verification of protein levels expression in GC by Western blot. **(C)** ICAM1 levels were detected in 30 pairs of GC tissues by qRT-PCR, revealing significantly higher ICAM1 expression in GC tissues relative to paracancerous tissues. Δ Ct values were determined by subtracting the β -actin Ct value from the ICAM1 Ct value. A smaller Δ Ct value indicates higher expression. **(D)** ICAM1 expression in primary gastric tumor tissue compared to normal tissues; **(E)** ICAM1 expression in male and female GC patients; **(F)** ICAM1 expression in different races. STAD: stomach adenocarcinoma. *means $p < 0.05$. ***means $p < 0.0001$.

DEGs to be enriched for GO terms such as “hormone activity”, “peptide hormone processing”, “secretory granule”, “fibrinolysis”, and “neuropeptide signaling pathway”. Neuropeptides are known to drive oncogenesis in response to inflammation through enhanced proliferation of epithelial

cells.³⁰ Fibrinolysis is associated with D-dimer production, with Lan et al having observed higher D-dimer levels in the plasma of GC patients relative to healthy controls in a manner correlated with depth of invasion, tumor size, lymph node metastasis, and TNM stage.³¹

In our pathway enrichment analysis, we found upregulated DEGs to be involved in “cytokine–cytokine receptor interaction”, “chemokine signaling pathway” and “staphylococcus aureus infection”. Chemokines are known to control cell migration in the context of inflammation, and prolonged inflammation can create a microenvironment conducive to the growth of tumors.^{32,33} DEGs downregulated in this study were linked to “chemical carcinogenesis”, “metabolism of xenobiotics by cytochrome P450”, and “drug metabolism – cytochrome P450”. This is consistent with previous research.^{34–36}

These functional enrichment analyses gave us a clear understanding of the potential functions of these DEGs in the development of GC, which also suggested the importance of finding hub genes among these genes.

Using a PPI network, we identified 4 candidate hub genes among these DEGs – MMP9, ICAM1, TLR8, and PTRC. These genes were highly expressed in EGC tissue samples but not in LGIN samples. Of these found genes, only ICAM1 was significantly associated with a poor GC patient prognosis, suggesting it may serve an oncogenic role. The discovery of this result gave us the enlightenment: ICAM1 regulates the occurrence of GC directly or indirectly, and may be used as a biomarker for the diagnosis of EGC. Of course, we need a larger sample for verification.

Since ICAM1 has a biological role in regulating the occurrence of gastric cancer, we were also interested in whether ICAM1 could be used as a marker for evaluating the prognosis of patients with EGC.

ICAM1, also known as CD54,³⁷ is an immunoglobulin superfamily (IGSF) member containing immunoglobulin-like domains of 90–100 amino acids in length.³⁸ ICAM1 is a key adhesion molecule that can vary substantially in size according to its glycosylation status.^{39,40} It is also a key regulator of tumor progression, and it has been found to be upregulated in many tumor types including breast, kidney, and pancreatic cancers.^{41–43} Our findings are in line with previous work exhibiting significantly increased ICAM1 levels in EGC relative to LGIN. ICAM1 plays tissue type-specific roles, with positive ICAM1 expression in breast cancer being negatively correlated with tumor size, lymph node metastasis, and tumor invasion.⁴⁴ In contrast, Huang et al found IL-35 to drive PDAC metastasis via promoting ICAM1 overexpression,⁴⁵ and Di et al determined that inhibiting ICAM1 significantly impaired breast cancer cell metastatic activity.^{42,43} In this study, we found that high ICAM1 expression was evident in GC patient tissues, and was linked with a poorer GC patient prognosis. This expression was not associated with patient gender or

ethnicity. This suggests ICAM1 has the potential to be used as an independent prognostic biomarker of EGC, in addition to playing a role in disease progression. But this also required a large number of samples for diagnostic tests.

In this report, we identified 482 genes differentially expressed between EGC and LGIN tumor samples, among which ICAM1 was prominent. Enrichment analyses revealed the identified DEGs to be associated with pathways known to be relevant in cancer. Using a PPI network, we identified ICAM1 as a gene associated with GC patient prognosis and survival, with elevated expression of ICAM1 being present in GC patients regardless of race or gender. This suggests that ICAM1 may play a role in GC progression, and may be a valuable early biomarker with diagnostic and prognostic relevance.

Study Limitations

This study has many limitations, including its limited number of samples analyzed and the lack of detail regarding the mechanisms by which ICAM1 is expressed in GC. Future studies focused on these underlying mechanisms in a larger cohort of samples are thus needed.

Abbreviations

GC, gastric cancer; EGC, early gastric cancer; DEGs, differentially expressed genes; LGIN, low-grade intraepithelial neoplasia; HGIN, high-grade intraepithelial neoplasia; GO, gene ontology; KEGG, Kyoto Encyclopedia of Genes and Genomes; PPI, protein-protein interaction; STRING, Search Tool for the Retrieval of Interacting Genes.

Ethics Approval and Consent to Participate

The study was approved by Guangxi Medical University Cancer Hospital Institutional Ethics Committee (No. LW2019057) and all participants gave written informed consent. This study strictly followed all regulations of the Declaration of Helsinki, and all data were maintained with confidentiality.

Data Sharing Statement

The datasets analyzed during the current study are available in the GSE55696 repository (www.ncbi.nlm.nih.gov/geo).

Acknowledgment

This project was supported by Guangxi Medical High-level Backbone Talent "139" Plan (No. G20190315),

Guangxi Natural Science Foundation (No. 2017GX XNSFAA980650), Guangxi Key R & D Plan (AB18221084), and Funding for the development and promotion of suitable medical and health technologies in Guangxi (S2018059).

Disclosure

The authors report no conflicts of interest in this work.

References

- Bray F, Ferlay J, Soerjomataram I, Siegel RL, Torre LA, Jemal A. Global cancer statistics 2018: GLOBOCAN estimates of incidence and mortality worldwide for 36 cancers in 185 countries. *CA Cancer J Clin.* 2018;68(6):394–424. doi:10.3322/caac.21492
- Feng R-M, Zong Y-N, Cao S-M, Xu R-H. Current cancer situation in China: good or bad news from the 2018 global cancer statistics? *Cancer Commun.* 2019;39:1. doi:10.1186/s40880-019-0368-6
- Feng F, Tian Y, Xu G, et al. Diagnostic and prognostic value of CEA, CA19–9, AFP and CA125 for early gastric cancer. *BMC Cancer.* 2017;17:1. doi:10.1186/s12885-017-3738-y
- Liu Y, Zheng D, Liu -J-J, et al. Comparing PET/MRI with PET/CT for pretreatment staging of gastric cancer. *Gastroenterol Res Pract.* 2019;2019:1–11.
- Evans JA, Chandrasekhara V, Chathadi KV, et al. The role of endoscopy in the management of premalignant and malignant conditions of the stomach. *Gastrointest Endosc.* 2015;82(1):1–8. doi:10.1016/j.gie.2015.03.1967
- Yang L, Zheng R, Wang N, et al. Incidence and mortality of stomach cancer in China, 2014. *Chin J Cancer Res.* 2018;30(3):291–298. doi:10.21147/j.issn.1000-9604.2018.03.01
- Bouzbid S, Hamdi-Chérif M, Zaidi Z, et al. Global surveillance of trends in cancer survival 2000–14 (CONCORD-3): analysis of individual records for 37 513 025 patients diagnosed with one of 18 cancers from 322 population-based registries in 71 countries. *Lancet.* 2018;S0140673617333263.
- Li DF, Wang NN, Chang X, et al. Bioinformatics analysis suggests that COL4A1 may play an important role in gastric carcinoma recurrence. *J Dig Dis.* 2019;20:391–400. doi:10.1111/cdd.2019.20.issue-8
- Yan P, He Y, Xie K, Kong S, Zhao W. In silico analyses for potential key genes associated with gastric cancer. *Peer J.* 2018;6:e6092. doi:10.7717/peerj.6092
- Bosman FT WHO classification of tumours of the digestive system 2010.
- Shi Y. The new understanding and rational treatment about high-grade gastric intraepithelial neoplasia. *Chin J Pract Surg.* 2011;31(8):659–661.
- Xu X, Feng L, Liu Y, et al. Differential gene expression profiling of gastric intraepithelial neoplasia and early-stage adenocarcinoma. *World J Gastroenterol.* 2014;20(47):17883–17893. doi:10.3748/wjg.v20.i47.17883
- Clough E, Barrett T. The gene expression omnibus database. *Methods Mol Biol.* 2016;1418:93.
- Consortium TGO. Expansion of the gene ontology knowledgebase and resources. *Nucleic Acids Res.* 2016;45(D1):D331.
- Minoru K, Susumu G, Yoko S, Miho F, Mao T KEGG for integration and interpretation of large-scale molecular data sets. 2012. doi:10.1094/PDIS-11-11-0999-PDN
- Da WH, Sherman BT, Lempicki RA. Systematic and integrative analysis of large gene lists using DAVID bioinformatics resources. *Nat Protoc.* 2009;4:1513–1521. doi:10.1038/nprot.2009.154
- Szklarczyk D, Morris JH, Cook H, et al. The STRING database in 2017: quality-controlled protein–protein association networks, made broadly accessible. *Nucleic Acids Res.* 2017;45(Database issue):D362–D368. doi:10.1093/nar/gkw937
- Szász AM, Lániczky A, Nagy Á, et al. Cross-validation of survival associated biomarkers in gastric cancer using transcriptomic data of 1065 patients. *Oncotarget.* 2016;7(31):49322–49333. doi:10.18632/oncotarget.v7i31
- Chandrashekar DS, Bashel B, Sah B, et al. UALCAN: a portal for facilitating tumor subgroup gene expression and survival analyses. *Neoplasia.* 2017;19(8):649–658. doi:10.1016/j.neo.2017.05.002
- Liu K, Liu H, Zhang Z, Ye W, Xu X. The role of N-glycosylation in high glucose-induced upregulation of intercellular adhesion molecule-1 on bovine retinal endothelial cells. *Acta Ophthalmol (Copenh).* 2016;94(4):353–357. doi:10.1111/aos.2016.94.issue-4
- Chen W, Zheng R, Baade PD, et al. Cancer statistics in China, 2015. *CA Cancer J Clin.* 2016;66(2):115–132. doi:10.3322/caac.21338
- Zou WB, Yang F, Zhao-Shen LI; Gastroenterology DO. How to improve the diagnosis rate of early gastric cancer in China. *J Zhejiang Univ.* 2015;44(1):9–14.
- Katai H, Ishikawa T, Akazawa K, et al. Five-year survival analysis of surgically resected gastric cancer cases in Japan: a retrospective analysis of more than 100,000 patients from the nationwide registry of the Japanese Gastric Cancer Association (2001–2007). *Gastric Cancer.* 2017;21(1):1–11.
- Wu Q, Zhang B, Wang Z, et al. Integrated bioinformatics analysis reveals novel key biomarkers and potential candidate small molecule drugs in gastric cancer. *Pathol Res Pract.* 2019;215(5):1038–1048. doi:10.1016/j.prp.2019.02.012
- Hao S, Lv J, Yang Q, et al. Identification of key genes and circular RNAs in human gastric cancer. *Med Sci Monitor.* 2019;25:2488–2504. doi:10.12659/MSM.915382
- Jiang K, Liu H, Xie D, Xiao Q. Differentially expressed genes ASPN, COL1A1, FN1, VCAN and MUC5AC are potential prognostic biomarkers for gastric cancer. *Oncol Lett.* 2019.
- Oshima H, Oshima M. The role of PGE-associated inflammatory responses in gastric cancer development. *Semin Immunopathol.* 2013;35(2):139–150. doi:10.1007/s00281-012-0353-5
- Deng Q, He B, Liu X, et al. Prognostic value of pre-operative inflammatory response biomarkers in gastric cancer patients and the construction of a predictive model. *J Transl Med.* 2015;13(1):1–16. doi:10.1186/s12967-015-0409-0
- Yolanda LV, Sergio PDL, Hugo ES, et al. Gastric cancer progression associated with local humoral immune responses. *BMC Cancer.* 2015;15(1):924. doi:10.1186/s12885-015-1858-9
- Jeppsson S, Srinivasan S, Chandrasekharan B. Neuropeptide Y (NPY) promotes inflammation-induced tumorigenesis by enhancing epithelial cell proliferation. *Am J Physiol Gastrointest Liver Physiol.* 2016;312(2):ajpgi.00410.2015.
- Long L, Xi Z, Bing Y, et al. Elevated plasma D-dimer levels correlate with long term survival of gastric cancer patients. *PLoS One.* 2014;9(3):e90547. doi:10.1371/journal.pone.0090547
- Hanneliën V, Karel G, Jo VD, Sofie S. The role of CXC chemokines in the transition of chronic inflammation to esophageal and gastric cancer. *BBA Rev Cancer.* 2012;1825(1):117–129. doi:10.1016/j.bbcan.2011.10.008
- Vandercappellen J, Damme JV, Struyf S. The role of CXC chemokines and their receptors in cancer. *Cancer Lett.* 2008;267(2):226–244. doi:10.1016/j.canlet.2008.04.050
- Ding J, Zhang Y. Analysis of key GO terms and KEGG pathways associated with carcinogenic chemicals. *Comb Chem High Throughput Screen.* 2018;20(10):861–871. doi:10.2174/1386207321666171218120133
- Demetriou CA, Degli Esposti D, Pullen Fedinick K, Russo F, Robinson O, Vineis P. Filling the gap between chemical carcinogenesis and the hallmarks of cancer: a temporal perspective. *Eur J Clin Invest.* 2018;48(6):e12933. doi:10.1111/eci.2018.48.issue-6
- Sik Kim H, Jun Kwack S, Mu Lee B. Alteration of cytochrome P-450 and glutathioneS-transferase activity in normal and malignant human stomach. *J Toxicol Environ Health Part A.* 2005;68(19):1611–1620. doi:10.1080/15287390500182867

37. Stefan K, Roth RB, Richard R, et al. Large-scale association study identifies ICAM gene region as breast and prostate cancer susceptibility locus. *Cancer Res.* 2004;64(24):8906–8910. doi:10.1158/0008-5472.CAN-04-1788
38. Smith CW, Marlin SD, Rothlein R, Toman C, DC A. Cooperative interactions of LFA-1 and Mac-1 with intercellular adhesion molecule-1 in facilitating adherence and transendothelial migration of human neutrophils in vitro. *J Clin Invest.* 1989;83(6):2008. doi:10.1172/JCI114111
39. Staunton DE, Dustin ML, Erickson HP, Springer TA. The arrangement of the immunoglobulin-like domains of ICAM-1 and the binding sites for LFA-1 and rhinovirus. *Cell.* 1990;61(2):243–254. doi:10.1016/0092-8674(90)90805-O
40. Kotteas EA, Panagiotis B, Ioannis G, Sofia T, George T, Syrigos KN. The intercellular cell adhesion molecule-1 (icam-1) in lung cancer: implications for disease progression and prognosis. *Anticancer Res.* 2014;34(9):4665–4672.
41. Shi X, Jiang J, Ye X, Liu Y, Wu Q, Wang L. Prognostic prediction and diagnostic role of intercellular adhesion molecule-1 (ICAM1) expression in clear cell renal cell carcinoma. *J Mol Histol.* 2014;45(4):427–434. doi:10.1007/s10735-014-9568-1
42. Jenkinson C, Elliott V, Menon U, et al. Evaluation in pre-diagnosis samples discounts ICAM-1 and TIMP-1 as biomarkers for earlier diagnosis of pancreatic cancer. *J Proteomics.* 2015;113:400–402. doi:10.1016/j.jprot.2014.10.001
43. Di D, Chen LEI, Wang L, et al. Downregulation of human intercellular adhesion molecule-1 attenuates the metastatic ability in human breast cancer cell lines. *Oncol Rep.* 2016;35(3):1541–1548. doi:10.3892/or.2016.4543
44. Ogawa Y, Hirakawa K, Nakata B, et al. Expression of intercellular adhesion molecule-1 in invasive breast cancer reflects low growth potential, negative lymph node involvement, and good prognosis. *Clin Cancer Res.* 1998;4(1):31–36.
45. Huang C, Li N, Li Z, et al. Tumour-derived Interleukin 35 promotes pancreatic ductal adenocarcinoma cell extravasation and metastasis by inducing ICAM1 expression. *Nat Commun.* 2017;8:14035. doi:10.1038/ncomms14035

Cancer Management and Research

Dovepress

Publish your work in this journal

Cancer Management and Research is an international, peer-reviewed open access journal focusing on cancer research and the optimal use of preventative and integrated treatment interventions to achieve improved outcomes, enhanced survival and quality of life for the cancer patient.

The manuscript management system is completely online and includes a very quick and fair peer-review system, which is all easy to use. Visit <http://www.dovepress.com/testimonials.php> to read real quotes from published authors.

Submit your manuscript here: <https://www.dovepress.com/cancer-management-and-research-journal>