

RAW DATA

SUPPLEMENTARY INFORMATIONS

Modulation of intestinal epithelial cell proliferation and apoptosis by *Lactobacillus gasseri* SF1183

Blanda Di Luccia^{°#}, Vittoria Acampora[°], Anella Saggese[°], Viola Calabrò[°],
Maria Vivo^{°^}, Tiziana Angrisano[°], Loredana Baccigalupi^{°°}, Ezio Ricca^{°*},
Alessandra Pollice ^{°*}

[°]Department of Biology and ^{°°}Department of Molecular Medicine and Medical Biotechnology, Federico II
University, Naples, Italy

[^]Department of Chemistry and Biology A. Zambelli, University of Salerno, Salerno, Italy

[#]Department of Microbiology and Immunology, Stanford University- School of Medicine, Stanford, CA, USA

*** corresponding authors:**

apollice@unina.it

ericca@unina.it

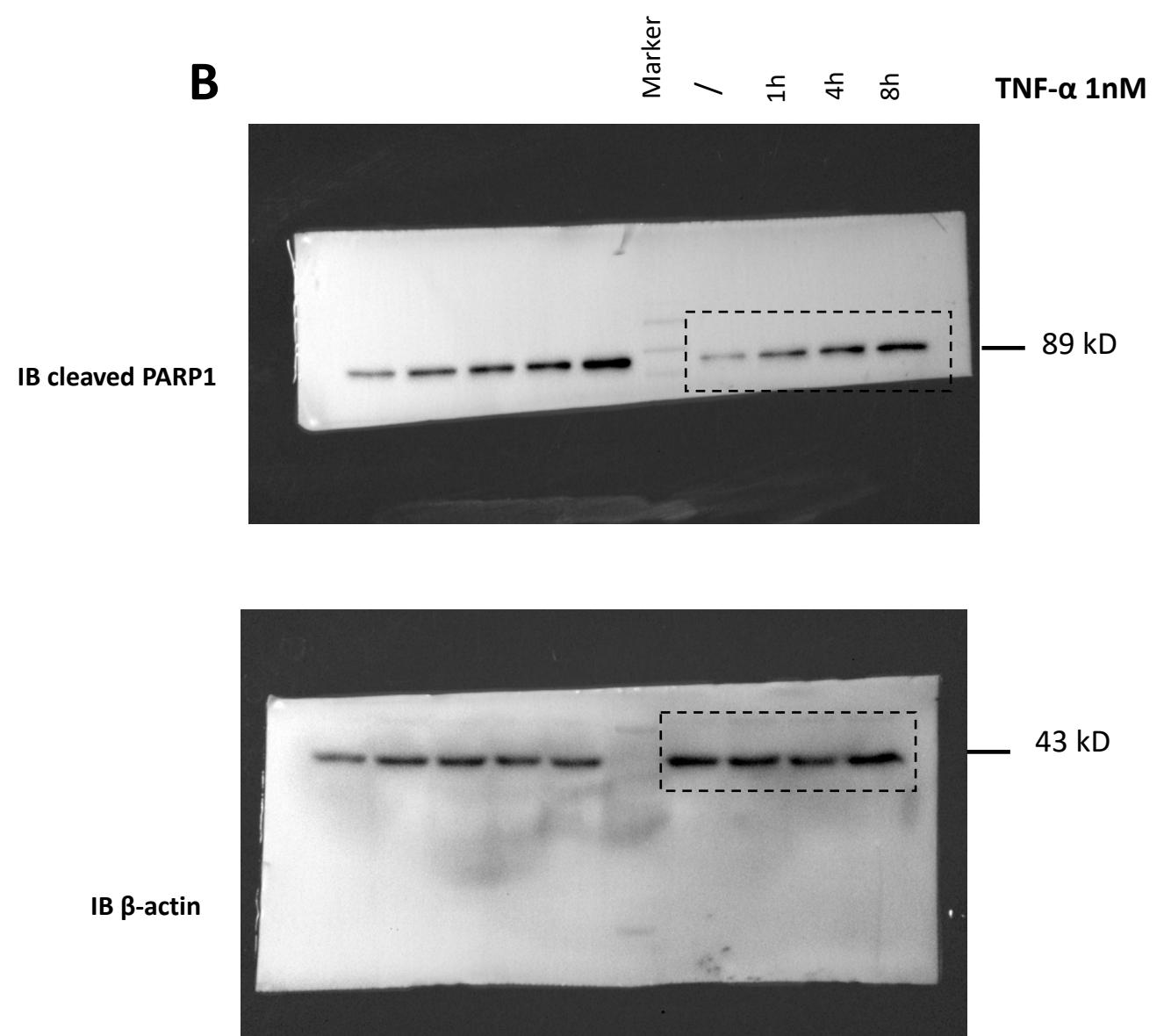
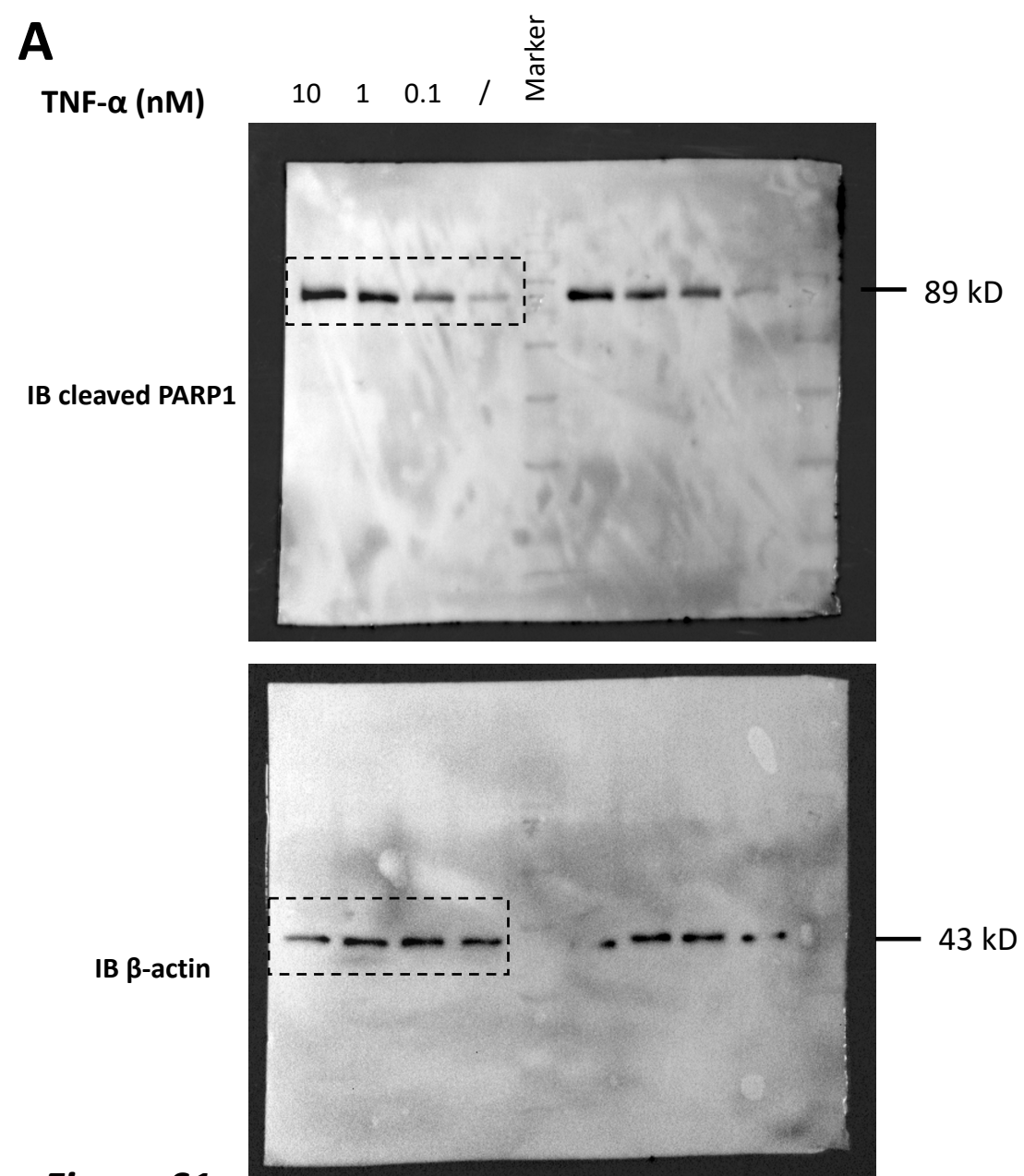


Figure S1

Full-length western blots images of cropped immunoblot of **Figure 1A and B**. Dashed squares correspond to the bands showed in the ultimate panels in the manuscript. In A bands were also horizontally flipped.

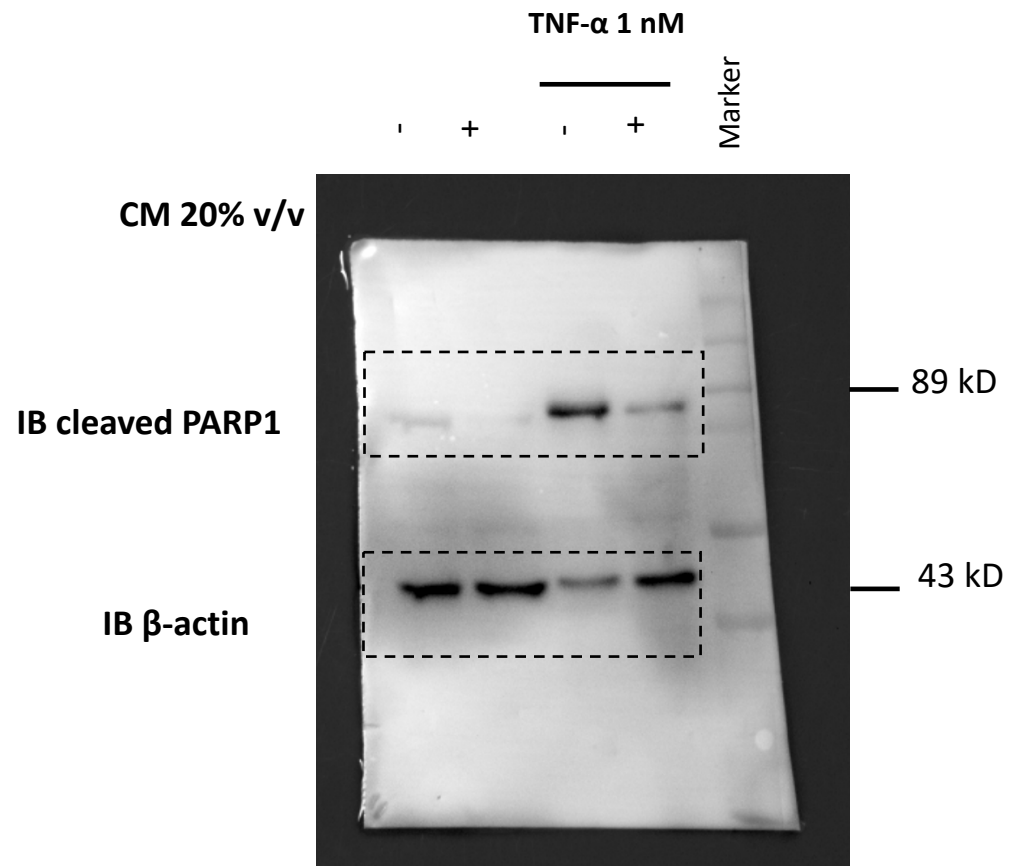


Figure S2

Full-length western blots images of cropped immunoblot of **Figure 2A**. Dashed squares correspond to the bands showed in the ultimate panels in the manuscript.

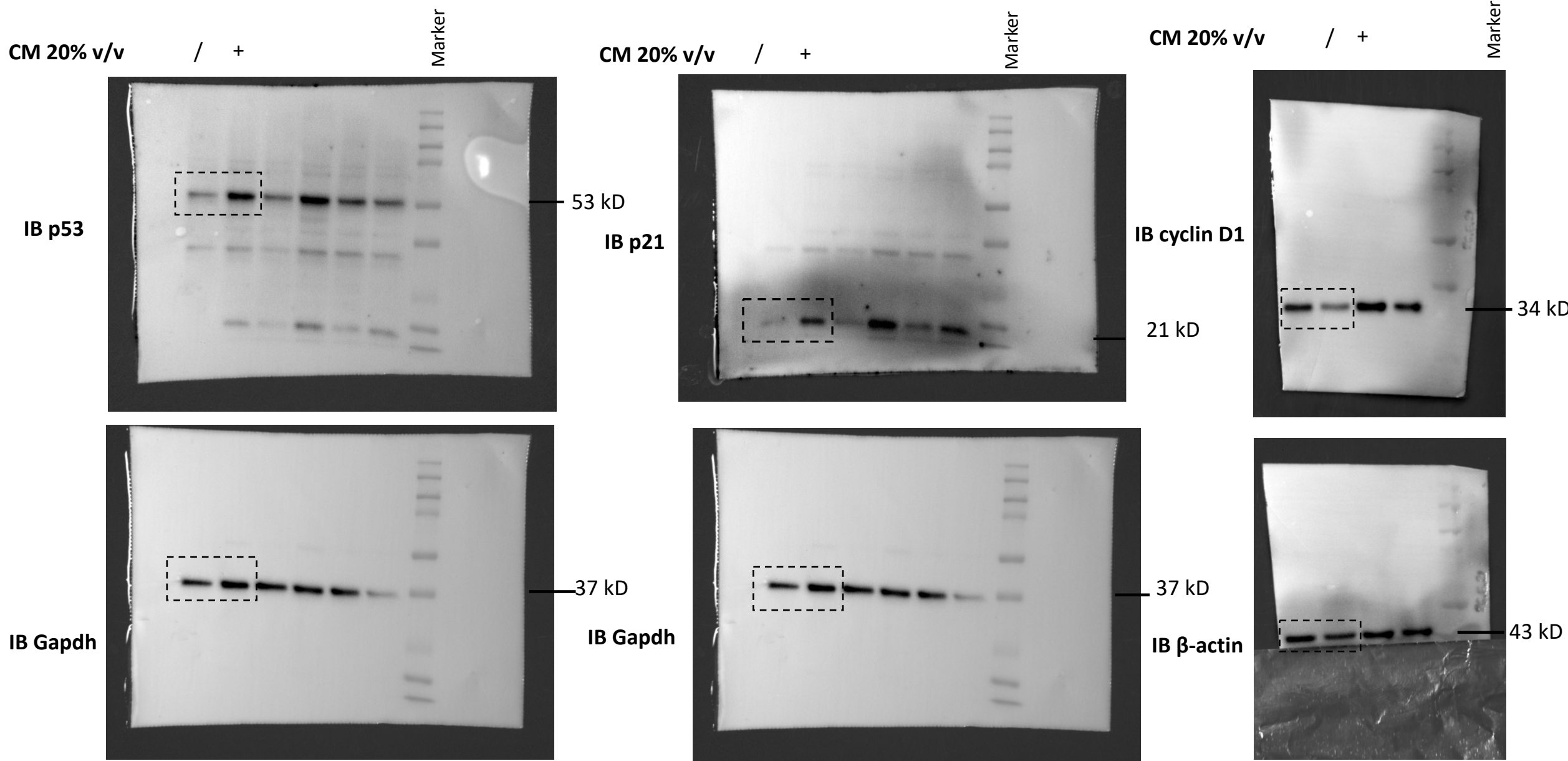


Figure S3

Full-length western blots images of cropped immunoblot of **Figure 3C**. Dashed squares correspond to the bands showed in the ultimate panels in the manuscript.

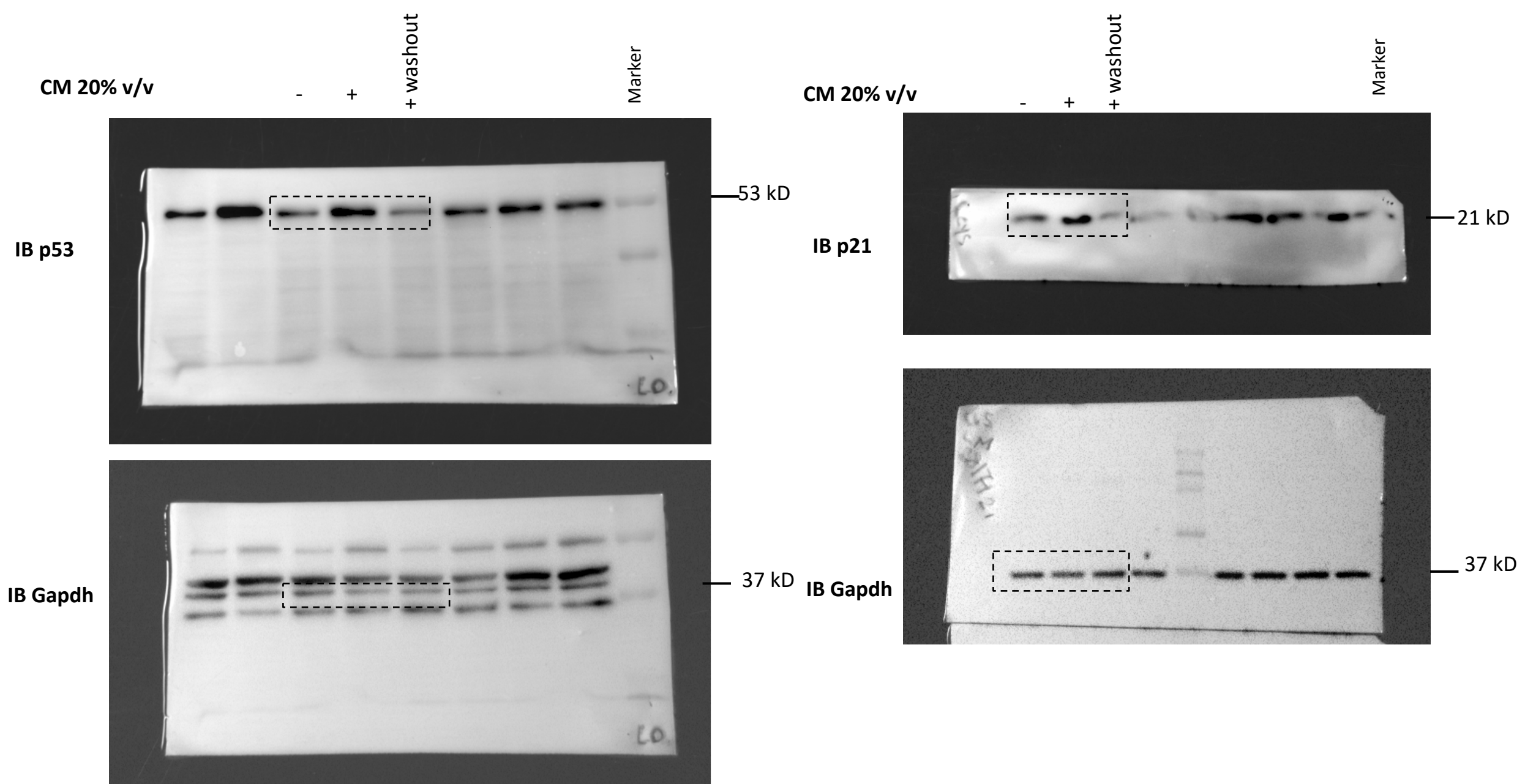


Figure S4
Full-length western blots images of cropped immunoblot of **Figure 4B**. Dashed squares correspond to the bands showed in the ultimate panels in the manuscript.

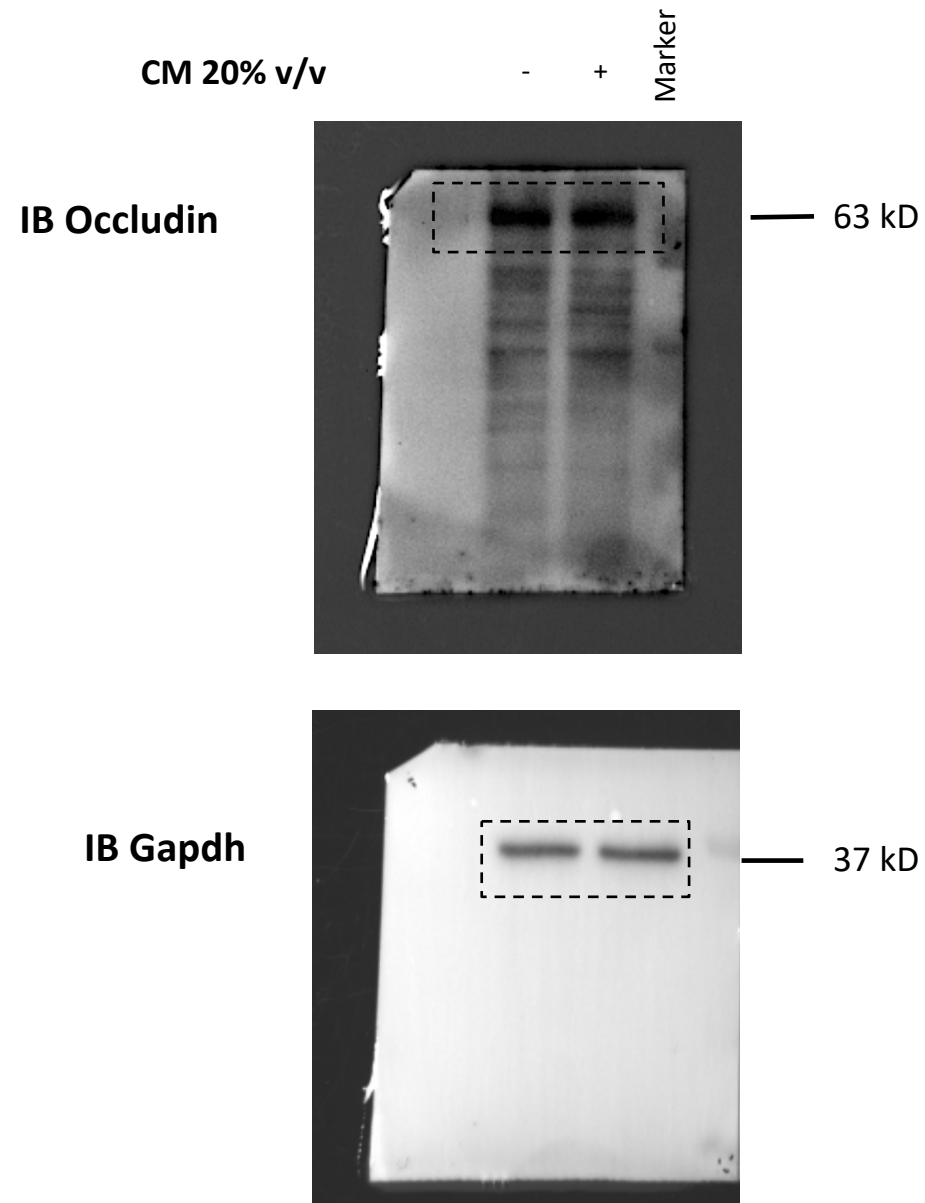


Figure S5

Full-length western blots images of cropped immunoblot of **Figure 5B**. Dashed squares correspond to the bands showed in the ultimate panels in the manuscript.

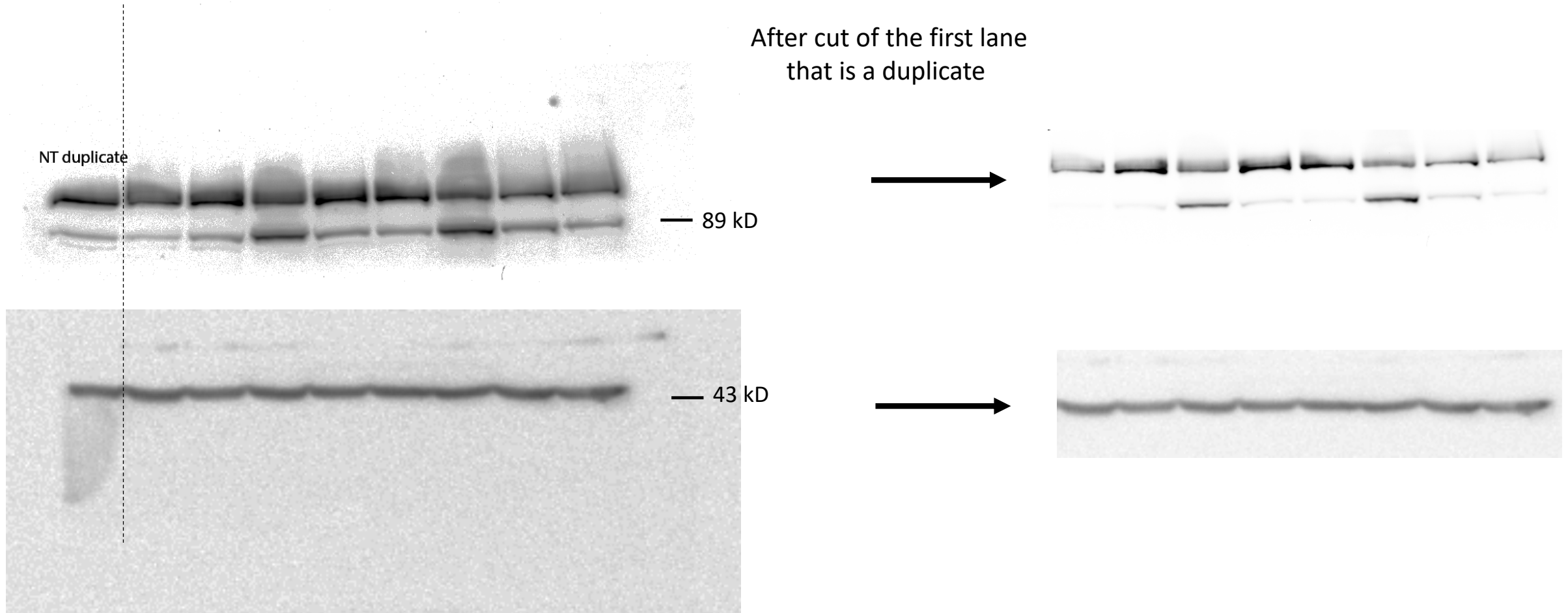


Figure S6

Full-length western blots images of cropped immunoblot of **Supplementary Figure 1 Part A**. Dashed squares correspond to the bands showed in the ultimate panels in the manuscript.

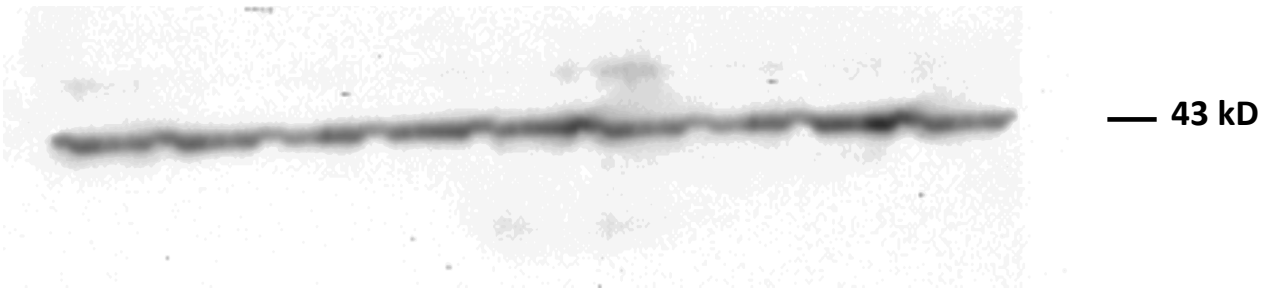
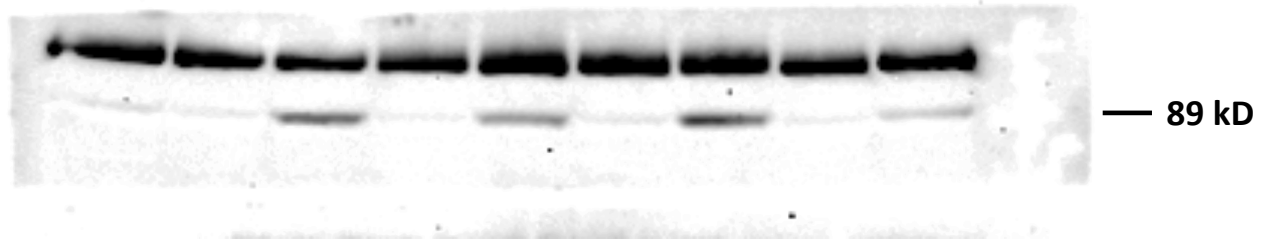


Figure S7

Full-length western blots images of cropped immunoblot of **Supplementary Figure 1 Part B**. Dashed squares correspond to the bands showed in the ultimate panels in the manuscript.