

SHORT REPORT

Open Access



IL-32 γ promotes the healing of murine cutaneous lesions caused by *Leishmania braziliensis* infection in contrast to *Leishmania amazonensis*

Rodrigo Saar Gomes^{1†}, Muriel Vilela Teodoro Silva^{1†}, Jéssica Cristina dos Santos^{1,5†}, Lucas Luiz de Lima Silva¹, Aline Carvalho Batista², Juliana Reis Machado¹, Mauro Martins Teixeira³, Miriam Leandro Dorta¹, Milton Adriano Pelli de Oliveira¹, Charles A Dinarello^{4,5}, Leo A. B. Joosten^{1,5*} and Fátima Ribeiro-Dias^{1*}

Abstract

Background: Interleukin 32 (IL-32) is a pro-inflammatory cytokine induced in patients with American tegumentary leishmaniasis (ATL) caused by *Leishmania braziliensis*. Here, we investigated whether IL-32 is also expressed in patient lesions caused by *L. amazonensis*. In addition, we evaluated experimental *L. amazonensis* and *L. braziliensis* infections in C57BL/6 transgenic mice for human IL-32 γ (IL-32 γ Tg) in comparison with wild-type (WT) mice that do not express the IL-32 gene.

Results: Human cutaneous lesions caused by *L. amazonensis* express higher levels of IL-32 than healthy control skin. In mice, the presence of IL-32 γ promoted the control of cutaneous lesions caused by *L. braziliensis*, but not lesions caused by *L. amazonensis* in an ear dermis infection model. In addition, IL-32 γ Tg mice displayed less tissue parasitism and inflammation in IL-32 γ Tg than WT mice during the healing phase of *L. braziliensis* infection. Production of antigen-specific pro-inflammatory cytokines was higher in IL-32 γ Tg mice than in WT mice during *L. braziliensis* infection but not during *L. amazonensis* infection.

Conclusions: Human cutaneous lesions caused by *L. amazonensis* express high levels of IL-32. In mice, the presence of IL-32 γ contributes to the lesion healing caused by *L. braziliensis* but not by *L. amazonensis*. Data suggest that despite the ability for both species to induce IL-32 in humans, the connections between this cytokine and other immune players induced by related species of parasites can lead to distinct outcomes of the murine infections.

Keywords: *Leishmania amazonensis*, *Leishmania braziliensis*, Cutaneous leishmaniasis, IL-32, Cytokines, Mouse model

Background

American tegumentary leishmaniasis (ATL) is an infectious disease caused by *Leishmania* protozoan, affecting the skin, oral or nasal mucosa. Brazil is one of 10 countries that together account for 70–75% of the cases of tegumentary leishmaniasis in the world [1]. *Leishmania amazonensis* and *Leishmania braziliensis* are the main

species that cause ATL in Brazil. *L. amazonensis* is associated with the development of localized or diffuse skin lesions whereas *L. braziliensis* is associated with localized cutaneous or mucosal lesions [2–4].

In general, humans or mice infected with *L. braziliensis* present a stronger cellular immune response against the parasites than human or mice infected with *L. amazonensis* [5, 6]. *L. braziliensis* infections cause small cutaneous lesions that regress after a few weeks in C57BL/6 mice. In these mice, it has been demonstrated that the IL-12-IFN- γ /TNF- α -NO axis controls the parasite infection [7–9]. By contrast, *L. amazonensis* generates

* Correspondence: leo.joosten@radboudumc.nl; fatimardias@gmail.com
†Equal contributors

¹Instituto de Patologia Tropical e Saúde Pública, Universidade Federal de Goiás, Goiânia, Goiás, Brazil

Full list of author information is available at the end of the article



chronic and non-healing infection in C57BL/6 mice with a deficient Th1 cell response [5, 10].

IL-32 is a cytokine expressed by several human cells, including NK cells, monocytes/macrophages, T lymphocytes, epithelial cells, endothelial cells, fibroblasts and hepatocytes. IL-32 is predominantly expressed intracellularly and can induce the production of TNF- α , IL-8 and IL-1 β [11]. To date, there are nine isoforms of human IL-32 and the highest biological activity has been attributed to IL-32 γ [12]. IL-32 is associated with the control or immunopathology of numerous infectious diseases, such as tuberculosis, HIV/AIDS, leprosy and hepatitis [13] likewise in dermatological diseases [14, 15].

Although rodents do not naturally produce IL-32, recombinant IL-32 (rIL-32) can activate mouse cells [11]. In addition, injection of rIL-32 γ into the knee joints of mice leads to arthritis partially mediated by induction of TNF- α [16]. Thus, the use of an experimental animal model to study the role of IL-32 in inflammatory and infectious diseases is made possible by IL-32 humanized transgenic mice.

We previously described that cutaneous and mucosal lesions of patients with ATL caused by *L. braziliensis* exhibit increased IL-32 expression compared to healthy tissues [17]. Here, we investigated the expression of IL-32 in cutaneous lesions of patients infected with *L. amazonensis*, and the role of IL-32 γ in experimental mouse infections caused by *L. amazonensis* and *L. braziliensis*.

Methods

Patient and control samples

Patients diagnosed with cutaneous leishmaniasis according to Oliveira et al. [8] and control healthy individuals were submitted to biopsy procedure to obtain fragments from lesions and healthy skin, after signing the consent form.

Immunohistochemical (IHC) analysis for IL-32

Biopsy fragments were obtained from cutaneous lesions to identify *Leishmania* species by polymerase chain reaction (PCR) as previously described [8], confirming all samples positive for *L. amazonensis*. Samples of healthy skin ($n = 8$) and a fragment of lesions from patients ($n = 5$) were used for IHC analysis for IL-32 using rabbit polyclonal antibodies to human IL-32 (Abcam Inc., Cambridge, UK), according to Galdino et al. [17]. The tissue expression (epithelium and dermis) of IL-32 was classified as follows: 0, absence of labelled cells; 1, 1–25% of labelled cells; 2, 26–50% of labelled cells; 3, 51–75% of labelled cells; and 4, 76–100% of labelled cells). All sections were blindly analyzed using a light microscope (magnification of 400 \times).

Animals and parasites

Transgenic mice for human IL-32 were developed by Choi et al. [18] and donated to our group by Dr. Charles Dinarello (University of Colorado, Denver, USA). Six to 8 week old C57BL/6 WT and IL-32 γ Tg mice were used in the experiments. All procedures were followed in accordance with the guidelines and legislation on ethics research.

Leishmania (*L.*) *amazonensis* (MHOM/BR/1973/M2269) and *L. (V.) braziliensis* (MHOM/BR/2003/IMG) strains were obtained from patients with localized cutaneous lesions [19, 20]. *L. braziliensis* strain was obtained and identified by our group, as described by Dorta et al. [19]. Briefly, lesion fragments were macerated in phosphate-buffered saline (PBS) and cultured in Grace's Insect Medium (Gibco, Life Technologies, Carlsbad, USA) supplemented with heat-inactivated 20% fetal bovine serum (FBS, Sigma-Aldrich, St. Louis, USA) and 100 U/ml of penicillin/streptomycin (Sigma-Aldrich) at 26 °C. The identification of the species was performed by PCR-RFLP, according to Volpini et al. [21]. *Leishmania amazonensis* strain was identified and donated to us by Mortara et al. [20].

Leishmania amazonensis and *L. braziliensis* promastigote forms were cultured in Grace's insect medium supplemented as described above. Parasites of either *L. amazonensis* or *L. braziliensis* from stationary phase (6th day) of growth were washed three times with sterile PBS, pH 7.4 (1000 \times g, 10 min, 10 °C), suspended in PBS and quantified by hemocytometer after fixation with PBS/0.1% formaldehyde.

Parasite lysates were obtained by 5 freeze-thaw cycles in liquid nitrogen and 37 °C water bath followed by protein quantification using the Pierce BCA protein assay (ThermoFisher, Rochester, USA).

Infection, disease progression and histopathological analysis

Animals were inoculated (1×10^5 promastigotes/10 μ l of PBS) into the dermis of the left ear. Three independent experiments were performed, with three animals per group in each experiment. Lesion size was measured weekly using a digital caliper. Lesion size is described as the difference between the thickness of the infected ear and the thickness of the uninfected ear [22]. Tissue parasitism was evaluated in the infected ear, draining lymph node (submandibular) and spleen by limiting dilution assay. The results were expressed as the negative logarithm of the parasite titer [23]. Paraformaldehyde fixed-ear tissue was embedded in paraffin to be processed for histopathological analysis after haematoxylin and eosin (H&E) staining. The cellular infiltrate evidenced in the inflammatory process was considered [24–26].

Cytokine production

Lesion-draining submandibular lymph node cells from uninfected and infected mice were macerated and maintained in RPMI 1640 medium (Sigma-Aldrich) supplemented with 10% FBS (Gibco), 1 M HEPES (Sigma-Aldrich), 2 mM glutamine (Sigma-Aldrich), 100 U/ml penicillin (Sigma-Aldrich) and 100 µg/ml streptomycin (Sigma-Aldrich). Viable cells were quantified using a hemocytometer by dye exclusion with Trypan blue 0.1% in PBS. Lymph node cells (5×10^5 cells/ml) were stimulated with antigen from *L. amazonensis* or *L. braziliensis* (50 µg/ml) for 24 h or 72 h, at 37 °C and 5% CO₂. TNF-α and IL-10 were evaluated in the culture supernatants by commercial enzyme-linked immunosorbent assay (ELISA) kits (R&D Systems, Minneapolis, USA), according to the manufacturer's protocol. IFN-γ was evaluated by ELISA using monoclonal antibodies obtained from hybridoma cultures, according to [27]. All cultures and measurements were done in duplicates.

Statistical analysis

Data are expressed as means ± standard deviations or median and individual values and compared using Student's *t* or Mann-Whitney U tests, respectively. Analyses were performed using Prism software version 6.0 (GraphPad, San Diego, CA, USA). Significance was established as $P < 0.05$.

Results

Expression of IL-32 in lesions of patients with ATL caused by *L. amazonensis*

We previously demonstrated that IL-32 is highly expressed in cutaneous and mucosal lesions of patients

with ATL infected with *Leishmania* (*Viannia*) spp., mainly *L. braziliensis*. In addition, amastigote forms of *L. braziliensis* were able to induce IL-32β in human peripheral blood mononuclear cells [17]. Here, we demonstrate that in cutaneous lesions caused by *L. amazonensis* infection IL-32 protein expression was also increased when compared to healthy skin specimens [$U = 7.5$, $P = 0.0412$ (epithelium) and $U = 0.0$, $P = 0.0008$ (inflammatory infiltrate)]. IL-32 was detected both in the epithelium and in the inflammatory infiltrate (Fig. 1a, b).

The role of IL-32 in experimental lesions caused by *L. amazonensis* or *L. braziliensis*

To understand the precise role of IL-32 in ATL, we infected human IL-32γTg and WT mice with either *L. amazonensis* or *L. braziliensis*. IL-32γTg mice showed a delayed development of ear lesions caused by *L. amazonensis* (until week 3); however, the size of the lesions were similar to WT mice in later stages of infection (Fig. 2a, c). In contrast, mice infected with *L. braziliensis* demonstrated a significant increase in the lesion size on the 3rd week of infection ($t_{(14)} = 2.23316$, $P = 0.042$), as well as a reduction of lesion size from week 6 post-infection in IL-32γTg mice compared to WT mice (Fig. 2b, c) [$t_{(14)} = 3.29151$, $P = 0.0053$ (6 weeks); $t_{(14)} = 2.16645$, $P = 0.048$ (7 weeks); $t_{(14)} = 2.82843$, $P = 0.013$ (8 weeks); $t_{(14)} = 2.37595$, $P = 0.032$ (9 weeks)].

We observed that *L. amazonensis*-infected IL-32γTg mice showed higher lesional parasite load on week 3 of infection compared to WT animals ($t_{(14)} = 2.52036$, $P = 0.024$). Despite this initial favoring of parasitism in IL-32γTg animals, the growth of *L. amazonensis* in later

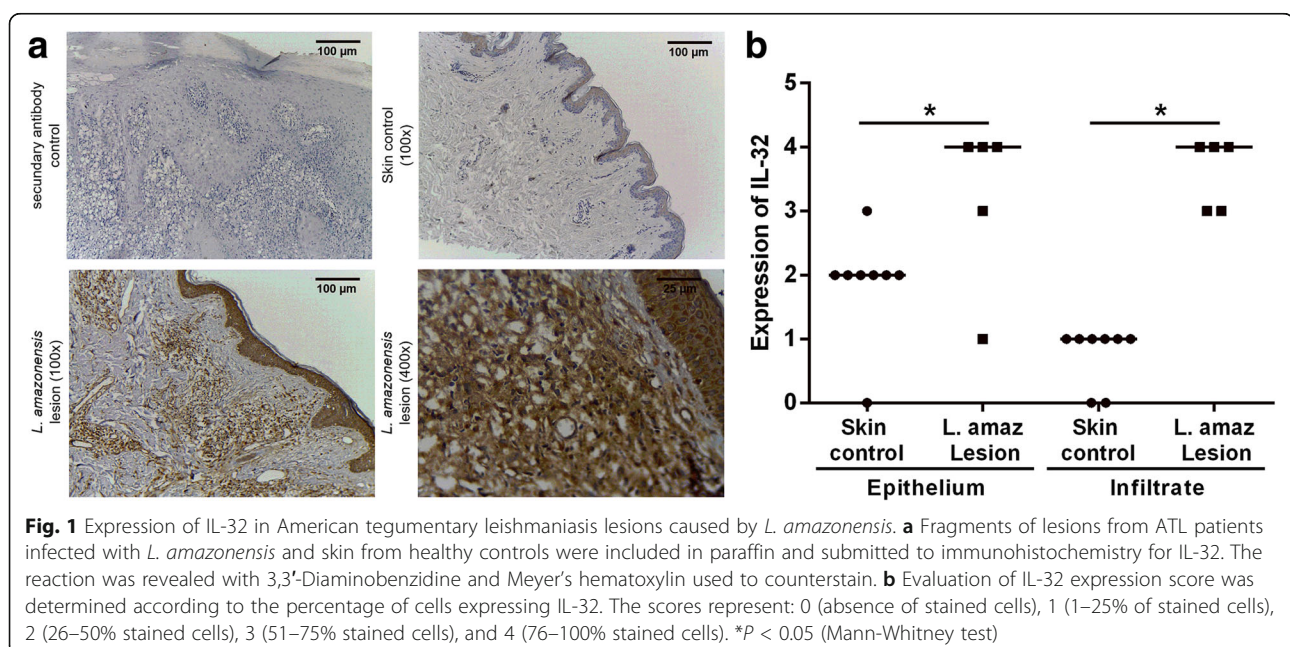
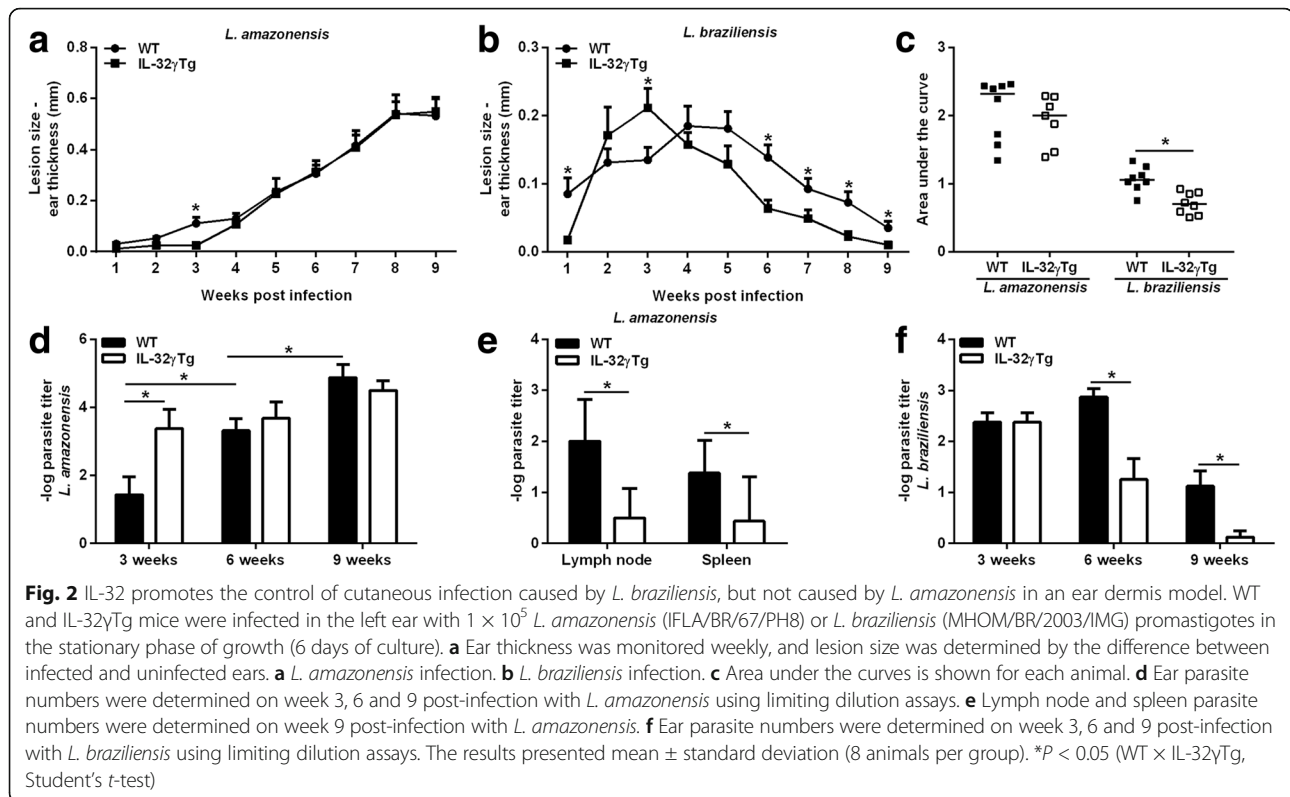


Fig. 1 Expression of IL-32 in American tegumentary leishmaniasis lesions caused by *L. amazonensis*. **a** Fragments of lesions from ATL patients infected with *L. amazonensis* and skin from healthy controls were included in paraffin and submitted to immunohistochemistry for IL-32. The reaction was revealed with 3,3'-Diaminobenzidine and Meyer's hematoxylin used to counterstain. **b** Evaluation of IL-32 expression score was determined according to the percentage of cells expressing IL-32. The scores represent: 0 (absence of stained cells), 1 (1–25% of stained cells), 2 (26–50% stained cells), 3 (51–75% stained cells), and 4 (76–100% stained cells). * $P < 0.05$ (Mann-Whitney test)



stages of infection was controlled, whereas parasites grew exponentially in WT mice (Fig. 2d). Although IL-32 γ was not able to reduce the *L. amazonensis* infection in the skin, we observed that IL-32 γ is important for parasite dissemination because IL-32 γ Tg mice harbored lower numbers of *L. amazonensis* parasites in draining lymph nodes ($t_{(6)} = 3$, $P = 0.024$) and spleens ($t_{(14)} = 2.46598$, $P = 0.027$) compared with WT mice in 9 weeks (Fig. 2e). During *L. braziliensis* infection, we observed a strong reduction of parasite burden in IL-32 γ Tg mice [$t_{(14)} = 3.68751$, $P = 0.0024$ (week 6) and $t_{(14)} = 3.12076$, $P = 0.0075$ (week 9)] (Fig. 2f). We did not observe *L. braziliensis* dissemination until the end of the experiments. As expected, WT and IL-32 γ Tg mice exhibited similar histological profiles of lesional inflammatory infiltrates after *L. amazonensis* infection. In contrast, the inflammatory infiltrate was remarkably reduced on weeks 6 and 9 post-infection in *L. braziliensis*-infected IL-32 γ Tg mice compared to WT mice. Despite this, both WT and IL-32 γ Tg mice showed a reduction of inflammatory infiltrate at the final stage of infection (9 weeks) when comparing the histopathological aspects on 3 or 6 weeks (Fig. 3).

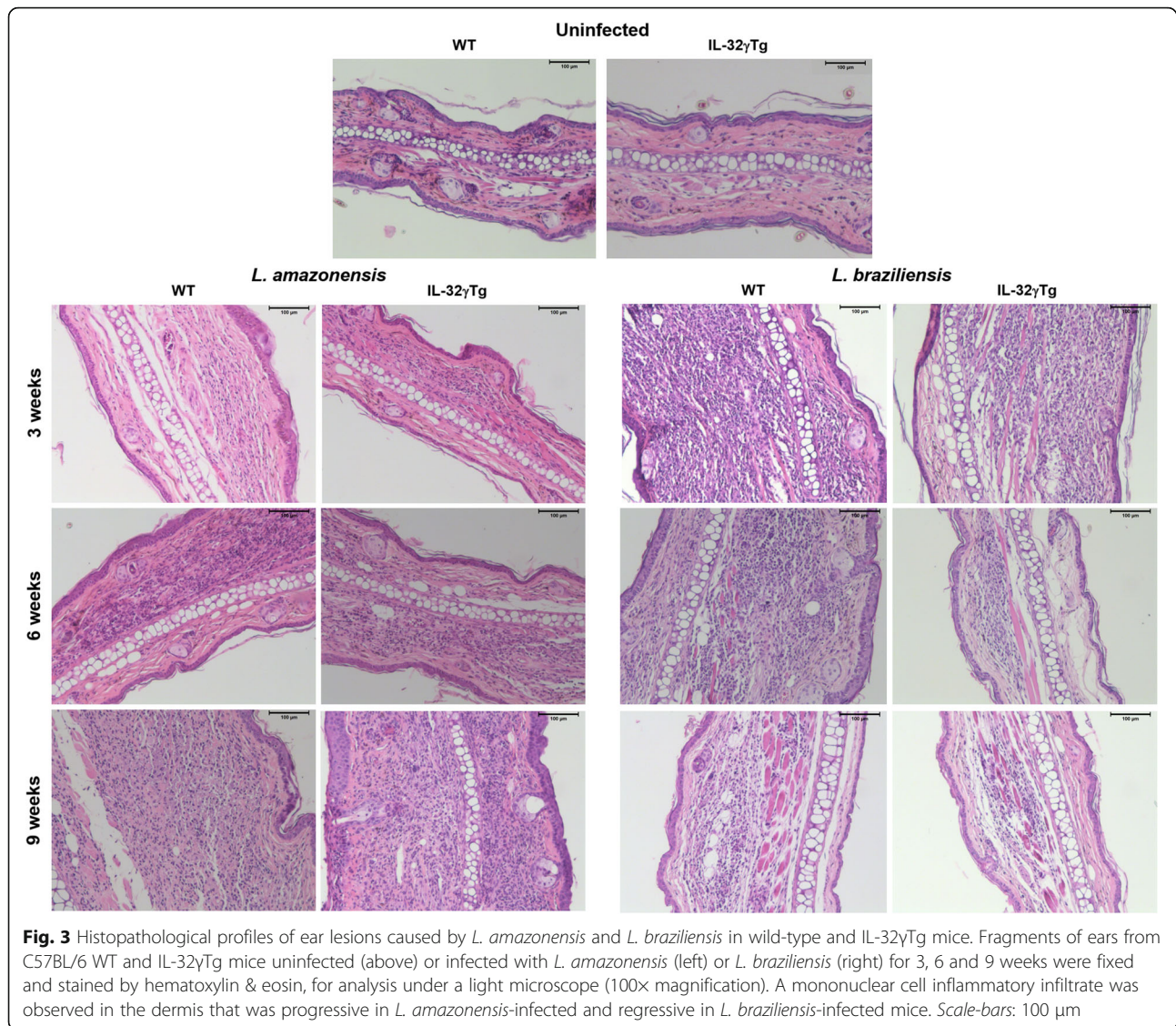
IL-32 γ induces inflammatory cytokines in experimental infections caused by *L. braziliensis* in contrast to *L. amazonensis*

Lesion-draining submandibular lymph node cells from infected mice were stimulated ex vivo with lysates of *L.*

amazonensis or *L. braziliensis* promastigotes for 24 h, or 72 h and cytokines were measured in culture supernatants. No difference in the production of IFN- γ , TNF- α and IL-10 was observed between WT and IL-32 γ Tg animals infected with *L. amazonensis* on weeks 3, 6 or 9 post-infection. In contrast, lymph node cells from *L. braziliensis*-infected IL-32 γ Tg animals showed higher cytokine production after antigen-specific stimulation than cells from WT mice (weeks 3 and 6; Fig. 4) [$t_{(51)} = 3.22153$, $P = 0.0022$ (IFN- γ , 3 weeks); $t_{(54)} = 4.87909$, $P < 0.0001$ (TNF- α , 6 weeks); $t_{(14)} = 2.92794$, $P = 0.011$ (IL-10, 6 weeks)].

Discussion

The present study demonstrated that in addition to *L. braziliensis* [17], *L. amazonensis* induces a strong IL-32 expression in human cutaneous lesions. Furthermore, we showed that human IL-32 γ was able to support the healing of skin lesions in *L. braziliensis*-infected mice, which is in contrast to *L. amazonensis* caused skin lesions. Based on pro-inflammatory properties of IL-32 γ [11, 13] we hypothesize that IL-32 γ could increase the immune response against *L. amazonensis* and lead to improved healing of the lesions. Although IL-32 γ inhibited the lesional parasite load, IL-32 γ did not increase the production of pro-inflammatory cytokines or improved healing. It is well-known that *L. amazonensis* strongly modulates the host immune response against this parasite [5, 10, 18, 28]. These experimental results, together with the observation

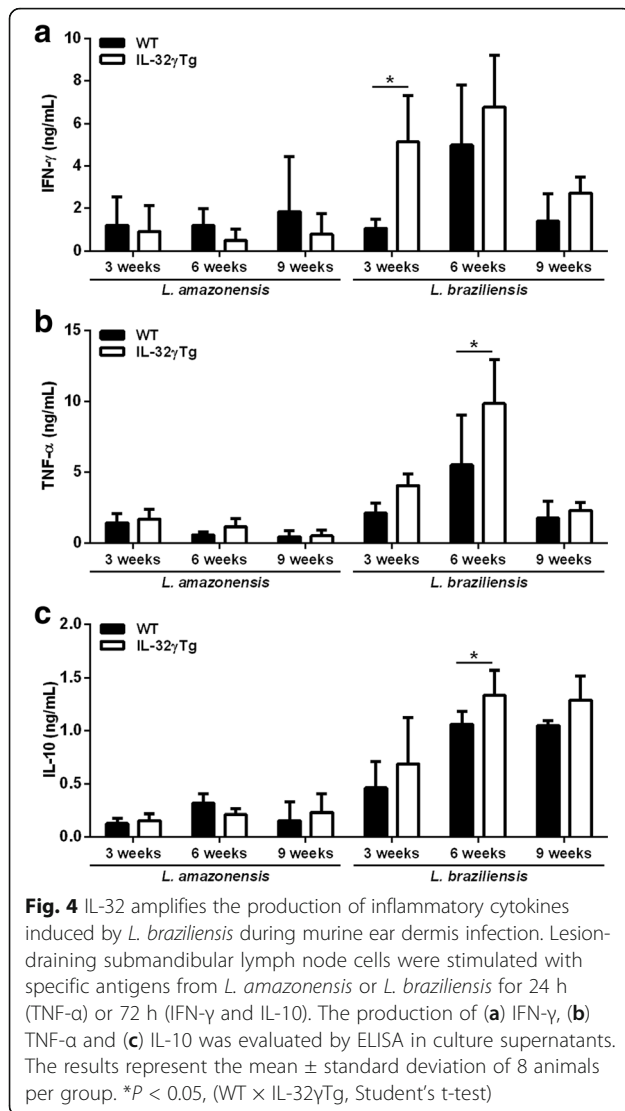


that IL-32 is highly expressed in cutaneous lesions of *L. amazonensis*-infected patients, suggest that even in the presence of IL-32 the parasites and lesion are persistent.

Although it is known that C57BL/6 mice are relatively resistant to *L. braziliensis* infection [5], we observed that the pro-inflammatory response during *L. braziliensis* infection was strengthened by IL-32 γ without a significant increase of immunopathology. In addition, IL-32 γ played an important role in controlling the parasite load, favoring the healing of the skin lesion. Thus, in cutaneous murine lesions caused by *L. braziliensis* that is restricted to skin and draining lymph node, the pro-inflammatory properties of IL-32 γ help the control of the infection. However, in *L. amazonensis*, which spreads beyond the cutaneous lesions to other tissues and suppress cytokine production, IL-32 γ contributes to the control of parasite dissemination but not for skin lesion healing. Differential

expression of IL-32 γ in the tissues during these two infections could explain the results besides intrinsic parasite factors that can interfere with the role of IL-32 γ . The results underscore the need of unravelling the molecular mechanisms used by *L. amazonensis* parasites to subvert the antileishmanial effect of IL-32 γ in skin observed against *L. braziliensis* infection.

It is important to highlight that murine models of leishmaniasis are not a reliable landscape of the immune responses against *Leishmania* parasites because mice do not produce IL-32. However, murine cells respond to human IL-32 [12]. Some important microbicidal mechanisms are dependent on IL-32, and therefore these latter mechanisms are lost in mice [29]. In this way, this IL-32 γ Tg mouse model is very important to reveal novel mechanisms that control or lead to immunopathogenesis in leishmaniasis.



Conclusions

IL-32γ is an important player in the control of *L. braziliensis* cutaneous infections in contrast to *L. amazonensis*-mediated infections, at least in ear dermis infection model. IL-32γ might be a novel target in strategies to control leishmaniasis caused by *L. braziliensis*.

Abbreviations

ATL: American tegumentary leishmaniasis; IFN-γ: Interferon gamma; IL-10: Interleukin-10; IL-12: Interleukin-12; IL-1β: Interleukin 1 beta; IL-32: Interleukin-32; IL-8: Interleukin-8; NK: Natural killer cell; NO: Nitric oxide; Th1: Type 1 T helper cells; TNF-α: Tumor necrosis factor-alpha; WT: Wild-type

Acknowledgments

We thank Natália Alberto A. Brandão for technical assistance. We also thank Dr. Sam Keating for reviewing the manuscript.

Funding

This work was supported by CNPq and CAPES, Brazil (project n. 401,887/2013–8 coordinated by Fátima Ribeiro-Dias. Leonardus A.B. Joosten is a PVE fellow of CNPq; FR-D, MAPO, MMT and ACB are fellow researchers of CNPq; JCS is PhD

student, fellow of CNPq; RSG is a post-doctoral researcher, fellow of CNPq; MVTS is PhD student, fellow of FAPEG.

Availability of data and materials

All data generated or analyzed during this study are included in this article.

Authors' contributions

FR-D, LABJ, CAD, RSG and MAPO conceived and designed the study. RSG, MVTS, JCS, LLLS, ACB, MLD, JRM and MMT performed the experiments and analyzed the data. RSG, MVTS, JCS and FR-D wrote the first draft of the manuscript. All authors read and approved the final manuscript.

Ethics approval and consent to participate

The present study was approved by the research ethics committee of the Hospital das Clínicas/UFG, protocol 44,033,514.0.0000.5078. Healthy donors and patients read and signed the Free and Informed Consent. All animal procedures were followed in accordance with the guidelines and legislation on ethics of the Brazilian Society of Science in Laboratory Animals (SBCAL) and National Council of Control of Animal Experimentation (CONCEA). Project approved by the Institutional Ethics Committee (CEUA/PRPI/UFG, protocol 042/16).

Consent for publication

Not applicable.

Competing interests

The authors declare that they have no competing interests.

Publisher's Note

Springer Nature remains neutral with regard to jurisdictional claims in published maps and institutional affiliations.

Author details

¹Instituto de Patologia Tropical e Saúde Pública, Universidade Federal de Goiás, Goiânia, Goiás, Brazil. ²Faculdade de Odontologia, Universidade Federal de Goiás, Goiânia, Goiás, Brazil. ³Departamento de Bioquímica e Imunologia, Universidade Federal de Minas Gerais, Belo Horizonte, Minas Gerais, Brazil. ⁴Division of Infectious Diseases, School of Medicine, University of Colorado Denver, Aurora, CO, USA. ⁵Department of Internal Medicine and Radboud Center of Infectious Diseases (RCI), Radboud University Medical Center, Nijmegen, The Netherlands.

Received: 24 February 2017 Accepted: 3 July 2017

Published online: 14 July 2017

References

- Alvar J, Velez ID, Bern C, Herrero M, Desjeux P, Cano J, et al. Team WHOCL: Leishmaniasis worldwide and global estimates of its incidence. *PLoS One*. 2012;7(5):e35671.
- Reithinger R, Dujardin JC, Louzir H, Pirmez C, Alexander B, Brooker S. Cutaneous leishmaniasis. *Lancet Infect Dis*. 2007;7(9):581–96.
- Goto H, Lauletta Lindoso JA. Cutaneous and mucocutaneous leishmaniasis. *Infect Dis Clin N Am*. 2012;26(2):293–307.
- Murray HW, Berman JD, Davies CR, Saravia NG. Advances in leishmaniasis. *Lancet*. 2005;366(9496):1561–77.
- Maioli TU, Takane E, Arantes RM, Fietto JL, Afonso LC. Immune response induced by New World *Leishmania* species in C57BL/6 mice. *Parasitol Res*. 2004;94(3):207–12.
- Silveira FT, Lainson R, De Castro Gomes CM, Laurenti MD, Corbett CE. Immunopathogenic competences of *Leishmania (V) braziliensis* and *L. (L.) amazonensis* in American cutaneous leishmaniasis. *Parasite Immunol*. 2009;31(8):423–31.
- Morgado FN, Schubach A, Rosalino CM, Quintella LP, Santos G, Salgueiro M, Conceicao-Silva F. Is the *in situ* inflammatory reaction an important tool to understand the cellular immune response in American tegumentary leishmaniasis? *Br J Dermatol*. 2008;158(1):50–8.
- Oliveira MA, Pires Ada S, de Bastos RP, Lima GM, Pinto SA, Pereira LI, et al. *Leishmania* spp. parasite isolation through inoculation of patient biopsy macerates in interferon gamma knockout mice. *Rev Inst Med Trop Sao Paulo*. 2010;52(2):83–8.

9. Diaz NL, Arvelaez FA, Zerpa O, Tapia FJ. Inducible nitric oxide synthase and cytokine pattern in lesions of patients with American cutaneous leishmaniasis. *Clin Exp Dermatol*. 2006;31(1):114–7.
10. Soong L. Subversion and Utilization of Host Innate Defense by *Leishmania amazonensis*. *Front Immunol*. 2012;3:58.
11. Kim SH, Han SY, Azam T, Yoon DY, Dinarello CA. Interleukin-32: a cytokine and inducer of TNFalpha. *Immunity*. 2005;22(1):131–42.
12. Choi JD, Bae SY, Hong JW, Azam T, Dinarello CA, Her E, et al. Identification of the most active interleukin-32 isoform. *Immunology*. 2009;126(4):535–42.
13. Ribeiro-Dias F, Saar Gomes R, de Lima Silva LL, Dos Santos JC, Joosten LA. Interleukin 32: a novel player in the control of infectious diseases. *J Leukoc Biol*. 2016;101(1):39–52.
14. Meyer N, Zimmermann M, Burgler S, Bassin C, Woehrl S, Moritz K, et al. IL-32 is expressed by human primary keratinocytes and modulates keratinocyte apoptosis in atopic dermatitis. *J Allergy Clin Immunol*. 2010;125(4):858–865.e10.
15. Kempuraj D, Conti P, Vasiadi M, Alysandratos KD, Tagen M, Kalogeromitros D, et al. IL-32 is increased along with tryptase in lesional psoriatic skin and is up-regulated by substance P in human mast cells. *Eur J Dermatol*. 2010;20(6):865–7.
16. Joosten LA, Netea MG, Kim SH, Yoon DY, Oppers-Walgreen B, Radstake TR, et al. IL-32, a proinflammatory cytokine in rheumatoid arthritis. *Proc Natl Acad Sci USA*. 2006;103(9):3298–303.
17. Galdino H Jr, Maldaner AE, Pessoni LL, Soriani FM, Pereira LI, Pinto SA, et al. Interleukin 32gamma (IL-32gamma) is highly expressed in cutaneous and mucosal lesions of American tegumentary leishmaniasis patients: association with tumor necrosis factor (TNF) and IL-10. *BMC Infect Dis*. 2014;14:249.
18. Choi J, Bae S, Hong J, Ryoo S, Jhun H, Hong K, et al. Paradoxical effects of constitutive human IL-32{gamma} in transgenic mice during experimental colitis. *Proc Natl Acad Sci USA*. 2010;107(49):21082–6.
19. Dorta ML, Oliveira MA, Fleuri AK, Duarte FB, Pinto SA, Pereira LI, Ribeiro-Dias F. Improvements in obtaining New World *Leishmania* sp. from mucosal lesions: notes on isolating and stocking parasites. *Exp Parasitol*. 2012;132(2):300–3.
20. Real F, Vidal RO, Carazzolle MF, Mondego JM, Costa GG, Herai RH, et al. The genome sequence of *Leishmania (Leishmania) amazonensis*: functional annotation and extended analysis of gene models. *DNA Res*. 2013;20(6):567–81.
21. Volpini AC, Passos VM, Oliveira GC, Romanha AJ. PCR-RFLP to identify *Leishmania (Viannia) braziliensis* and *L. (Leishmania) amazonensis* causing American cutaneous leishmaniasis. *Acta Trop*. 2004;90(1):31–7.
22. Lima-Junior DS, Costa DL, Carregaro V, Cunha LD, Silva AL, Mineo TW, et al. Inflammasome-derived IL-1beta production induces nitric oxide-mediated resistance to *Leishmania*. *Nat Med*. 2013;19(7):909–15.
23. de Souza-Neto SM, Carneiro CM, Vieira LQ, Afonso LC. *Leishmania braziliensis*: partial control of experimental infection by interleukin-12 p40 deficient mice. *Mem Inst Oswaldo Cruz*. 2004;99(3):289–94.
24. Cangussu SD, Souza CC, Campos CF, Vieira LQ, Afonso LC, Arantes RM. Histopathology of *Leishmania major* infection: revisiting *L. major* histopathology in the ear dermis infection model. *Mem Inst Oswaldo Cruz*. 2009;104(6):918–22.
25. Pereira LI, Dorta ML, Pereira AJ, Bastos RP, Oliveira MA, Pinto SA, et al. Increase of NK cells and proinflammatory monocytes are associated with the clinical improvement of diffuse cutaneous leishmaniasis after immunochemotherapy with BCG/*Leishmania* antigens. *Am J Trop Med Hyg*. 2009;81(3):378–83.
26. Gomes CM, Avila LR, Santos JC, Oliveira PG, Tome FD, Pereira LI, et al. *Leishmania (Viannia) braziliensis* amastigotes from patients with mucosalleishmaniasis have increased ability to disseminate and are controlled by nitric oxide at the early stage of murine infection. *Pathog Dis*. 2016;74(4):ftw023.
27. dos Santos MS, Vaz Cardoso LP, Nascimento GR, Lino Rde S Jr, Dorta ML, de Oliveira MA, Ribeiro-Dias F. *Leishmania major*: recruitment of Gr-1+ cells into draining lymph nodes during infection is important for early IL-12 and IFN gamma production. *Exp Parasitol*. 2008;119(3):403–10.
28. Ji J, Masterson J, Sun J, Soong L. CD4+CD25+ regulatory T cells restrain pathogenic responses during *Leishmania amazonensis* infection. *J Immunol*. 2005;174(11):7147–53.
29. Bloom BR, Modlin RL. Mechanisms of defense against intracellular pathogens mediated by human macrophages. *Microbiol Spectr*. 2016;4(3):MCHD-0006-2015.

Submit your next manuscript to BioMed Central and we will help you at every step:

- We accept pre-submission inquiries
- Our selector tool helps you to find the most relevant journal
- We provide round the clock customer support
- Convenient online submission
- Thorough peer review
- Inclusion in PubMed and all major indexing services
- Maximum visibility for your research

Submit your manuscript at
www.biomedcentral.com/submit

