



# Crystal structure of *trans*-diaquabis(1*H*-pyrazole-3-carboxylato- $\kappa^2$ *N,O*)copper(II) dihydrate

Santiago Reinoso, Beñat Artetxe, Oscar Castillo, Antonio Luque and Juan M. Gutiérrez-Zorrilla\*

Departamento de Química Inorgánica, Facultad de Ciencia y Tecnología, Universidad de País Vasco UPV/EHU, PO Box 644, E-48080 Bilbao, Spain.

\*Correspondence e-mail: juanma.zorrilla@ehu.es

Received 11 November 2015; accepted 14 November 2015

Edited by W. Imhof, University Koblenz-Landau, Germany

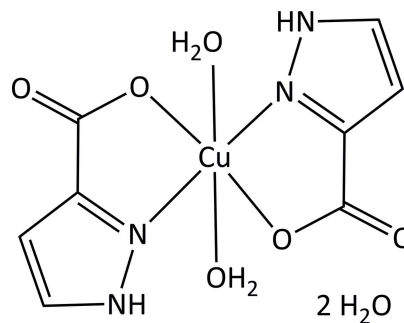
In the title compound,  $[\text{Cu}(\text{C}_4\text{H}_3\text{N}_2\text{O}_2)_2(\text{H}_2\text{O})_2]\cdot 2\text{H}_2\text{O}$ , the  $\text{Cu}^{\text{II}}$  ion is located on an inversion centre and exhibits an axially elongated octahedral coordination geometry. The equatorial plane is formed by two *N,O*-bidentate 1*H*-pyrazole-3-carboxylate ligands in a *trans* configuration. The axial positions are occupied by two water molecules. The mononuclear complex molecules are arranged in layers parallel to the *ab* plane. Each complex molecule is linked to four adjacent species through intermolecular  $\text{O}\cdots\text{H}\cdots\text{O}$  and  $\text{N}\cdots\text{H}\cdots\text{O}$  hydrogen bonds that are established between the coordinating water molecules and carboxylate O atoms or protonated N atoms of the organic ligands. These layers are further connected into a three-dimensional network by additional hydrogen bonds involving solvent water molecules and non-coordinating carboxylate O atoms.

**Keywords:** crystal structure; copper(II) complex; *trans* configuration; 1*H*-pyrazole-3-carboxylate.

**CCDC reference:** 1437048

## 1. Related literature

For mononuclear cobalt(II), nickel(II) and zinc complexes of the 1*H*-pyrazole-3-carboxylate ligand, see: Artetxe *et al.* (2015); López-Viseras *et al.* (2014).



## 2. Experimental

### 2.1. Crystal data

$[\text{Cu}(\text{C}_4\text{H}_3\text{N}_2\text{O}_2)_2(\text{H}_2\text{O})_2]\cdot 2\text{H}_2\text{O}$   
 $M_r = 357.77$   
 Monoclinic,  $P2_1/c$   
 $a = 6.4780$  (4) Å  
 $b = 21.5757$  (10) Å  
 $c = 4.8937$  (3) Å  
 $\beta = 105.856$  (7)°

$V = 657.96$  (6) Å<sup>3</sup>  
 $Z = 2$   
 Cu  $K\alpha$  radiation  
 $\mu = 2.83$  mm<sup>-1</sup>  
 $T = 100$  K  
 $0.09 \times 0.04 \times 0.02$  mm

### 2.2. Data collection

Agilent SuperNova Single source at offset diffractometer  
 Absorption correction: multi-scan (CrysAlis PRO; Agilent, 2011)  
 $T_{\text{min}} = 0.817$ ,  $T_{\text{max}} = 1$

4452 measured reflections  
 1216 independent reflections  
 1089 reflections with  $I > 2\sigma(I)$   
 $R_{\text{int}} = 0.031$

### 2.3. Refinement

$R[F^2 > 2\sigma(F^2)] = 0.028$   
 $wR(F^2) = 0.074$   
 $S = 1.09$   
 1216 reflections  
 109 parameters  
 4 restraints

H atoms treated by a mixture of independent and constrained refinement  
 $\Delta\rho_{\text{max}} = 0.36$  e Å<sup>-3</sup>  
 $\Delta\rho_{\text{min}} = -0.35$  e Å<sup>-3</sup>

**Table 1**

Selected geometric parameters (Å, °).

Cu1—N2	1.9808 (16)	Cu1—O1W	2.4501 (15)
Cu1—O7	1.9910 (14)		
N2—Cu1—O7	81.30 (6)	O7—Cu1—O1W	89.43 (5)
N2—Cu1—O1W	92.08 (6)		

**Table 2**

Hydrogen-bond geometry (Å, °).

<i>D</i> —H $\cdots$ <i>A</i>	<i>D</i> —H	H $\cdots$ <i>A</i>	<i>D</i> $\cdots$ <i>A</i>	<i>D</i> —H $\cdots$ <i>A</i>
N1—H1 $\cdots$ O1W <sup>i</sup>	0.88	1.93	2.710 (2)	147
O1W—H1WA $\cdots$ O8 <sup>ii</sup>	0.83 (2)	1.86 (2)	2.667 (2)	163 (3)
O1W—H1WB $\cdots$ O7 <sup>iii</sup>	0.82 (2)	1.96 (2)	2.709 (2)	153 (3)
O2W—H2WA $\cdots$ O2W <sup>iv</sup>	0.83 (2)	1.95 (2)	2.7792 (15)	178 (3)
O2W—H2WB $\cdots$ O8	0.81 (2)	2.04 (2)	2.854 (2)	175 (3)

Symmetry codes: (i)  $-x + 1, -y + 1, -z - 1$ ; (ii)  $-x, -y + 1, -z$ ; (iii)  $x, y, z - 1$ ; (iv)  $x, -y + \frac{1}{2}, z - \frac{1}{2}$ .

Data collection: *CrysAlis PRO* (Agilent, 2011); cell refinement: *CrysAlis PRO*; data reduction: *CrysAlis PRO*; program(s) used to solve structure: *OLEX2* (Dolomanov *et al.*, 2009); program(s) used to refine structure: *SHELXL97* (Sheldrick, 2008); molecular graphics: *ORTEP-3 for Windows* (Farrugia, 2012); software used to prepare material for publication: *WinGX* (Farrugia, 2012) and *PLATON* (Spek, 2009).

### Acknowledgements

This work was supported financially by Eusko Jaurlaritza/Gobierno Vasco (IT477-10), MINECO (MAT2013-48366-C2-1P) and the Universidad de País Vasco UPV/EHU (UFI11/53). The authors thank SGIker (UPV/EHU) for technical and human support.

Supporting information for this paper is available from the IUCr electronic archives (Reference: IM2473).

### References

- Agilent (2011). *CrysAlis PRO*. Agilent Technologies UK Ltd, Yarnton, England.
- Artetxe, B., Reinoso, S., San Felices, L., Vitoria, P., Pache, A., Martín-Caballero, J. & Gutiérrez-Zorrilla, J. M. (2015). *Inorg. Chem.* **54**, 241–252.
- Dolomanov, O. V., Bourhis, L. J., Gildea, R. J., Howard, J. A. K. & Puschmann, H. (2009). *J. Appl. Cryst.* **42**, 339–341.
- Farrugia, L. J. (2012). *J. Appl. Cryst.* **45**, 849–854.
- López-Viseras, M., Fernández, B., Hilfiker, S., González, C. S., González, J. L., Calahorra, A. J., Colacio, E. & Rodríguez-Diéguez, A. (2014). *J. Inorg. Biochem.* **131**, 64–67.
- Sheldrick, G. M. (2008). *Acta Cryst.* **A64**, 112–122.
- Spek, A. L. (2009). *Acta Cryst.* **D65**, 148–155.

## supporting information

*Acta Cryst.* (2015). E71, m232–m233 [doi:10.1107/S2056989015021593]

## Crystal structure of *trans*-diaquabis(1*H*-pyrazole-3-carboxylato- $\kappa^2$ N,O)copper(II) dihydrate

Santiago Reinoso, Beñat Artetxe, Oscar Castillo, Antonio Luque and Juan M. Gutiérrez-Zorrilla

### S1. Structural commentary

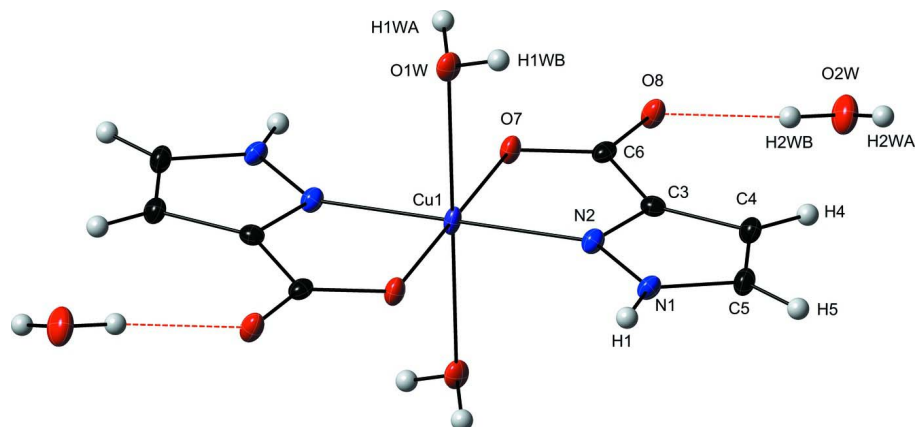
The title compound,  $[\text{Cu}(\text{C}_4\text{H}_3\text{N}_2\text{O}_2)_2(\text{H}_2\text{O})_2] \cdot 2\text{H}_2\text{O}$  crystallizes in the monoclinic crystal system, space group  $P2_1/c$ . The equatorial Cu—O and Cu—N distances (Table 1) are similar to those observed for the corresponding Co(II), Ni(II) and Zn(II) analogues (Artetxe *et al.*, 2015; López-Viseras *et al.*, 2014). However, the axial bond lengths are much longer due to the Jahn-Teller effect operating in Cu(II) centres. The mononuclear complexes arrange in layers parallel to the *ab* plane through intermolecular O—H $\cdots$ O and N—H $\cdots$ O hydrogen bonds that are established between the coordinated water molecules (O1W) and carboxylate O atoms (O7, O8) or protonated N atoms (N2) of the organic ligands. These layers are further connected into a three-dimensional network by additional hydrogen bonds involving solvent water molecules (O2W) and non-coordinating carboxylate O atoms (O8). Table 2 summarizes the geometrical parameters of these O—H $\cdots$ O and N—H $\cdots$ O hydrogen bonding interactions.

### S2. Synthesis and crystallization

To a solution of  $\text{CuCl}_2 \cdot 2\text{H}_2\text{O}$  (51 mg, 0.3 mmol) in hot water (15 ml) 1*H*-pyrazole-3-carboxylic acid (74 mg, 0.6 mmol) dissolved in hot water (10 ml) was added dropwise. After stirring for 30 min at 90 °C, the final solution was left undisturbed and prismatic blue crystals suitable for X-ray diffraction were obtained upon cooling to room temperature (Yield: 68 mg, 63%).

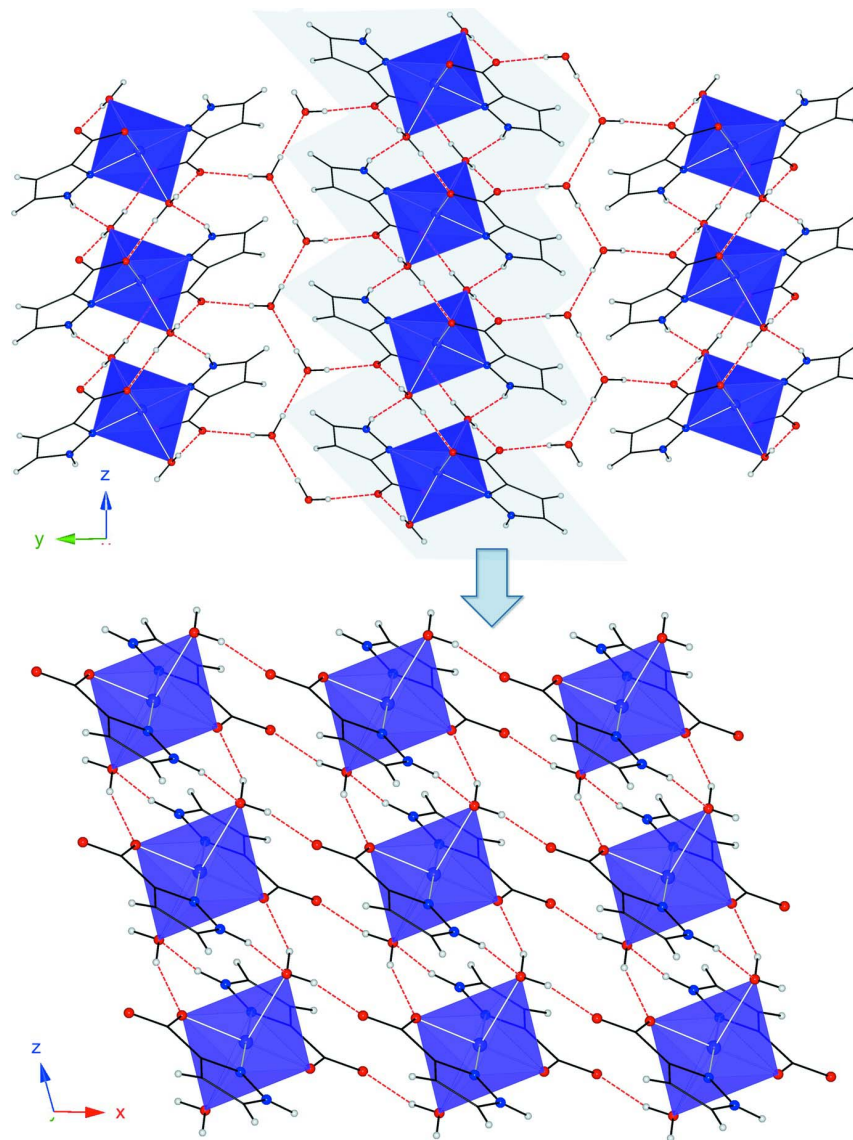
### S3. Refinement

Crystal data, data collection and structure refinement details are summarized in Table 1. All atoms except H were refined anisotropically. H atoms of the water molecules were located in a Fourier difference map and refined isotropically with O—H bond lengths restrained to 0.84 (2) and with  $U_{\text{iso}}(\text{H}) = 1.5U_{\text{eq}}(\text{O})$ . All pyrazole H atoms were positioned geometrically and refined using a riding model with C—H = 0.95 Å, N—H = 0.88 Å and  $U_{\text{iso}}(\text{H}) = 1.2U_{\text{eq}}(\text{C}, \text{N})$ .



**Figure 1**

Molecular structure of  $[\text{Cu}(\text{C}_4\text{H}_3\text{N}_2\text{O}_2)_2(\text{H}_2\text{O})_2] \cdot 2\text{H}_2\text{O}$  showing the atom labelling for the asymmetric unit and 50% probability displacement ellipsoids.



**Figure 2**

View of the crystal packing along the crystallographic *a* axis (above). Projection of a layer of  $[\text{Cu}(\text{C}_4\text{H}_3\text{N}_2\text{O}_2)_2(\text{H}_2\text{O})_2]$  complexes along the  $[010]$  direction (below). Cu(II) centres are represented as translucent octahedra and the O—H $\cdots$ O and N—H $\cdots$ O hydrogen bonds are depicted as dashed red lines.

***trans*-Diaquabis(1*H*-pyrazole-3-carboxylato- $\kappa^2$ N,O)copper(II) dihydrate**

*Crystal data*

$[\text{Cu}(\text{C}_4\text{H}_3\text{N}_2\text{O}_2)_2(\text{H}_2\text{O})_2] \cdot 2\text{H}_2\text{O}$

$M_r = 357.77$

Monoclinic,  $P2_1/c$

Hall symbol:  $-P\ 2_1/c$

$a = 6.4780$  (4) Å

$b = 21.5757$  (10) Å

$c = 4.8937$  (3) Å

$\beta = 105.856$  (7)°

$V = 657.96$  (6) Å<sup>3</sup>

$Z = 2$

$F(000) = 366$

$D_x = 1.806$  Mg m<sup>-3</sup>

Cu  $K\alpha$  radiation,  $\lambda = 1.54184$  Å

Cell parameters from 1956 reflections

$\theta = 4.1\text{--}73.7^\circ$

$\mu = 2.83$  mm<sup>-1</sup>

$T = 100$  K  
Prism, blue

$0.09 \times 0.04 \times 0.02$  mm

#### Data collection

Agilent SuperNova Single source at offset diffractometer

$T_{\min} = 0.817$ ,  $T_{\max} = 1$

Radiation source: SuperNova (Cu) X-ray Source

4452 measured reflections

Mirror monochromator

1216 independent reflections

Detector resolution: 5.2012 pixels  $\text{mm}^{-1}$

1089 reflections with  $I > 2\sigma(I)$

$\omega$  scans

$R_{\text{int}} = 0.031$

Absorption correction: multi-scan  
(*CrysAlis PRO*; Agilent, 2011)

$\theta_{\max} = 69^\circ$ ,  $\theta_{\min} = 4.1^\circ$

$h = -6 \rightarrow 7$

$k = -23 \rightarrow 26$

$l = -5 \rightarrow 5$

#### Refinement

Refinement on  $F^2$

Secondary atom site location: difference Fourier map

Least-squares matrix: full

$R[F^2 > 2\sigma(F^2)] = 0.028$

Hydrogen site location: inferred from neighbouring sites

$wR(F^2) = 0.074$

H atoms treated by a mixture of independent and constrained refinement

$S = 1.09$

$w = 1/[\sigma^2(F_o^2) + (0.0406P)^2 + 0.2735P]$

1216 reflections

where  $P = (F_o^2 + 2F_c^2)/3$

109 parameters

$(\Delta/\sigma)_{\max} < 0.001$

4 restraints

$\Delta\rho_{\max} = 0.36 \text{ e } \text{\AA}^{-3}$

Primary atom site location: structure-invariant direct methods

$\Delta\rho_{\min} = -0.35 \text{ e } \text{\AA}^{-3}$

#### Special details

**Experimental.** IR (KBr pellets,  $\text{cm}^{-1}$ ): 3487(s), 3340(s), 3140(s), 3075(s), 2854(s), 2795(s), 1695(s), 1501(m), 1451(w), 1358(s), 1263(w), 1132(w), 1069(w), 1015(w), 943(m), 899(m), 839(m), 785(m), 648(m), 615(w), 500(w).

TGA/DTA (synthetic air,  $5^\circ\text{C min}^{-1}$ ): The initial endothermic dehydration process (calcd/found for  $4\text{H}_2\text{O}$ : 20.1/20.2%) is completed at c.a.  $85^\circ\text{C}$  and is followed by a thermal stability range for the anhydrous phase that extends up to c.a.  $210^\circ\text{C}$ . The highly exothermic ligand combustion results in the final residue at  $370^\circ\text{C}$  (calcd/found for  $\text{CuO}$ : 22.1/21.8%).

CHN (%m, calcd/found): C (26.8/27.2), H (3.9/3.9), N(15.7/15.5).

**Geometry.** All e.s.d.'s (except the e.s.d. in the dihedral angle between two l.s. planes) are estimated using the full covariance matrix. The cell e.s.d.'s are taken into account individually in the estimation of e.s.d.'s in distances, angles and torsion angles; correlations between e.s.d.'s in cell parameters are only used when they are defined by crystal symmetry. An approximate (isotropic) treatment of cell e.s.d.'s is used for estimating e.s.d.'s involving l.s. planes.

**Refinement.** Refinement of  $F^2$  against ALL reflections. The weighted  $R$ -factor  $wR$  and goodness of fit  $S$  are based on  $F^2$ , conventional  $R$ -factors  $R$  are based on  $F$ , with  $F$  set to zero for negative  $F^2$ . The threshold expression of  $F^2 > \sigma(F^2)$  is used only for calculating  $R$ -factors(gt) *etc.* and is not relevant to the choice of reflections for refinement.  $R$ -factors based on  $F^2$  are statistically about twice as large as those based on  $F$ , and  $R$ -factors based on ALL data will be even larger.

#### Fractional atomic coordinates and isotropic or equivalent isotropic displacement parameters ( $\text{\AA}^2$ )

	$x$	$y$	$z$	$U_{\text{iso}}^*/U_{\text{eq}}$
Cu1	0.5	0.5	0	0.01043 (15)
N1	0.5203 (3)	0.37840 (7)	-0.3376 (4)	0.0113 (4)
H1	0.6239	0.3877	-0.4153	0.014*
N2	0.4416 (3)	0.41696 (7)	-0.1769 (4)	0.0111 (4)
C3	0.2890 (3)	0.38581 (9)	-0.0975 (4)	0.0105 (4)
C4	0.2691 (3)	0.32597 (9)	-0.2127 (4)	0.0124 (4)
H4	0.1732	0.2942	-0.1909	0.015*

C5	0.4182 (3)	0.32329 (9)	-0.3637 (4)	0.0137 (4)
H5	0.4452	0.2886	-0.4687	0.016*
C6	0.1815 (3)	0.42089 (9)	0.0858 (4)	0.0107 (4)
O7	0.2562 (2)	0.47569 (6)	0.1520 (3)	0.0118 (3)
O8	0.0330 (2)	0.39735 (6)	0.1641 (3)	0.0144 (3)
O1W	0.2455 (2)	0.54965 (6)	-0.4047 (3)	0.0134 (3)
O2W	-0.1631 (3)	0.28054 (7)	0.2052 (4)	0.0219 (4)
H1WA	0.140 (4)	0.5615 (13)	-0.353 (6)	0.033*
H1WB	0.208 (5)	0.5252 (12)	-0.536 (5)	0.033*
H2WA	-0.167 (5)	0.2621 (13)	0.054 (5)	0.033*
H2WB	-0.102 (4)	0.3132 (10)	0.201 (6)	0.033*

*Atomic displacement parameters (Å<sup>2</sup>)*

	$U^{11}$	$U^{22}$	$U^{33}$	$U^{12}$	$U^{13}$	$U^{23}$
Cu1	0.0144 (2)	0.0066 (2)	0.0126 (2)	-0.00226 (14)	0.00748 (17)	-0.00236 (15)
N1	0.0134 (8)	0.0095 (8)	0.0118 (8)	0.0020 (6)	0.0049 (7)	-0.0013 (6)
N2	0.0139 (8)	0.0095 (8)	0.0105 (8)	0.0006 (6)	0.0046 (7)	-0.0006 (6)
C3	0.0101 (9)	0.0116 (9)	0.0091 (9)	-0.0005 (7)	0.0016 (7)	0.0019 (7)
C4	0.0147 (10)	0.0089 (9)	0.0136 (10)	-0.0006 (8)	0.0039 (8)	0.0008 (7)
C5	0.0162 (10)	0.0094 (9)	0.0149 (10)	0.0008 (7)	0.0035 (8)	-0.0019 (7)
C6	0.0124 (9)	0.0098 (9)	0.0093 (10)	0.0026 (7)	0.0021 (8)	0.0013 (7)
O7	0.0153 (7)	0.0087 (6)	0.0132 (7)	-0.0015 (5)	0.0071 (5)	-0.0020 (5)
O8	0.0159 (7)	0.0106 (7)	0.0198 (8)	-0.0013 (5)	0.0103 (6)	0.0000 (6)
O1W	0.0153 (7)	0.0130 (7)	0.0140 (7)	-0.0010 (6)	0.0076 (6)	-0.0037 (6)
O2W	0.0313 (9)	0.0143 (7)	0.0209 (9)	-0.0057 (7)	0.0084 (7)	0.0011 (7)

*Geometric parameters (Å, °)*

Cu1—N2	1.9808 (16)	C3—C6	1.484 (3)
Cu1—N2 <sup>i</sup>	1.9808 (16)	C4—C5	1.369 (3)
Cu1—O7 <sup>i</sup>	1.9910 (14)	C4—H4	0.95
Cu1—O7	1.9910 (14)	C5—H5	0.95
Cu1—O1W	2.4501 (15)	C6—O8	1.238 (3)
Cu1—O1W <sup>i</sup>	2.4501 (15)	C6—O7	1.285 (2)
N1—N2	1.338 (2)	O1W—H1WA	0.833 (18)
N1—C5	1.350 (3)	O1W—H1WB	0.817 (18)
N1—H1	0.88	O2W—H2WA	0.834 (18)
N2—C3	1.338 (3)	O2W—H2WB	0.813 (17)
C3—C4	1.401 (3)		
N2—Cu1—N2 <sup>i</sup>	180.00 (4)	N1—N2—Cu1	139.59 (13)
N2—Cu1—O7 <sup>i</sup>	98.70 (6)	N2—C3—C4	109.90 (18)
N2 <sup>i</sup> —Cu1—O7 <sup>i</sup>	81.30 (6)	N2—C3—C6	115.16 (17)
N2—Cu1—O7	81.30 (6)	C4—C3—C6	134.95 (18)
N2 <sup>i</sup> —Cu1—O7	98.70 (6)	C4—C3—Cu1	150.27 (15)
O7 <sup>i</sup> —Cu1—O7	180	C6—C3—Cu1	74.67 (11)
N2—Cu1—O1W	92.08 (6)	C5—C4—C3	104.79 (17)

N2 <sup>i</sup> —Cu1—O1W	87.92 (6)	C5—C4—H4	127.6
O7 <sup>i</sup> —Cu1—O1W	90.57 (5)	C3—C4—H4	127.6
O7—Cu1—O1W	89.43 (5)	N1—C5—C4	108.16 (18)
N2—Cu1—O1W <sup>i</sup>	87.92 (6)	N1—C5—H5	125.9
N2 <sup>i</sup> —Cu1—O1W <sup>i</sup>	92.08 (6)	C4—C5—H5	125.9
O7 <sup>i</sup> —Cu1—O1W <sup>i</sup>	89.43 (5)	O8—C6—O7	124.79 (19)
O7—Cu1—O1W <sup>i</sup>	90.57 (5)	O8—C6—C3	120.69 (17)
O1W—Cu1—O1W <sup>i</sup>	180.00 (6)	O7—C6—C3	114.52 (17)
N2—N1—C5	110.36 (17)	O8—C6—Cu1	164.75 (15)
C5—N1—Cu1	134.42 (13)	C3—C6—Cu1	74.54 (11)
N2—N1—H1	124.8	C6—O7—Cu1	115.51 (13)
C5—N1—H1	124.8	Cu1—O1W—H1WA	108 (2)
Cu1—N1—H1	100.7	Cu1—O1W—H1WB	110 (2)
C3—N2—N1	106.79 (16)	H1WA—O1W—H1WB	110 (3)
C3—N2—Cu1	113.30 (14)	H2WA—O2W—H2WB	107 (3)
N2 <sup>i</sup> —Cu1—N1—N2	180	O7—Cu1—C3—C6	-0.48 (10)
O7 <sup>i</sup> —Cu1—N1—N2	-176.5 (2)	O1W—Cu1—C3—C6	-87.49 (11)
O7—Cu1—N1—N2	3.5 (2)	O1W <sup>i</sup> —Cu1—C3—C6	92.51 (11)
O1W—Cu1—N1—N2	-86.4 (2)	N2—C3—C4—C5	0.2 (2)
O1W <sup>i</sup> —Cu1—N1—N2	93.6 (2)	C6—C3—C4—C5	-180.0 (2)
N2—Cu1—N1—C5	-8.9 (2)	Cu1—C3—C4—C5	-6.1 (3)
N2 <sup>i</sup> —Cu1—N1—C5	171.1 (2)	N2—N1—C5—C4	-0.5 (2)
O7 <sup>i</sup> —Cu1—N1—C5	174.58 (18)	Cu1—N1—C5—C4	3.4 (3)
O7—Cu1—N1—C5	-5.42 (18)	C3—C4—C5—N1	0.2 (2)
O1W—Cu1—N1—C5	-95.26 (18)	N2—C3—C6—O8	177.59 (17)
O1W <sup>i</sup> —Cu1—N1—C5	84.74 (18)	C4—C3—C6—O8	-2.3 (3)
C5—N1—N2—C3	0.6 (2)	Cu1—C3—C6—O8	-179.15 (18)
Cu1—N1—N2—C3	-172.7 (3)	N2—C3—C6—O7	-2.6 (3)
C5—N1—N2—Cu1	173.24 (16)	C4—C3—C6—O7	177.6 (2)
O7 <sup>i</sup> —Cu1—N2—C3	175.82 (13)	Cu1—C3—C6—O7	0.68 (14)
O7—Cu1—N2—C3	-4.18 (13)	N2—C3—C6—Cu1	-3.26 (14)
O1W—Cu1—N2—C3	-93.28 (14)	C4—C3—C6—Cu1	176.9 (2)
O1W <sup>i</sup> —Cu1—N2—C3	86.72 (14)	N2—Cu1—C6—O8	179.6 (6)
O7 <sup>i</sup> —Cu1—N2—N1	3.5 (2)	N2 <sup>i</sup> —Cu1—C6—O8	-0.4 (6)
O7—Cu1—N2—N1	-176.5 (2)	O7 <sup>i</sup> —Cu1—C6—O8	176.3 (5)
O1W—Cu1—N2—N1	94.4 (2)	O7—Cu1—C6—O8	-3.7 (5)
O1W <sup>i</sup> —Cu1—N2—N1	-85.6 (2)	O1W—Cu1—C6—O8	-88.9 (5)
N1—N2—C3—C4	-0.4 (2)	O1W <sup>i</sup> —Cu1—C6—O8	91.1 (5)
Cu1—N2—C3—C4	-175.27 (13)	N2—Cu1—C6—O7	-176.66 (15)
N1—N2—C3—C6	179.66 (15)	N2 <sup>i</sup> —Cu1—C6—O7	3.34 (15)
Cu1—N2—C3—C6	4.8 (2)	O7 <sup>i</sup> —Cu1—C6—O7	180
N1—N2—C3—Cu1	174.8 (2)	O1W—Cu1—C6—O7	-85.20 (13)
N2 <sup>i</sup> —Cu1—C3—N2	180	O1W <sup>i</sup> —Cu1—C6—O7	94.80 (13)
O7 <sup>i</sup> —Cu1—C3—N2	-5.02 (16)	N2—Cu1—C6—C3	2.38 (10)
O7—Cu1—C3—N2	174.98 (16)	N2 <sup>i</sup> —Cu1—C6—C3	-177.62 (10)
O1W—Cu1—C3—N2	87.97 (14)	O7 <sup>i</sup> —Cu1—C6—C3	-0.96 (19)
O1W <sup>i</sup> —Cu1—C3—N2	-92.03 (14)	O7—Cu1—C6—C3	179.04 (19)



N2—Cu1—C3—C4	9.0 (2)	O1W—Cu1—C6—C3	93.84 (10)
N2 <sup>i</sup> —Cu1—C3—C4	-171.0 (2)	O1W <sup>i</sup> —Cu1—C6—C3	-86.16 (10)
O7 <sup>i</sup> —Cu1—C3—C4	4.0 (3)	O8—C6—O7—Cu1	178.80 (15)
O7—Cu1—C3—C4	-176.0 (3)	C3—C6—O7—Cu1	-1.0 (2)
O1W—Cu1—C3—C4	97.0 (3)	N2—Cu1—O7—C6	2.83 (13)
O1W <sup>i</sup> —Cu1—C3—C4	-83.0 (3)	N2 <sup>i</sup> —Cu1—O7—C6	-177.17 (13)
N2—Cu1—C3—C6	-175.5 (2)	O1W—Cu1—O7—C6	95.02 (13)
N2 <sup>i</sup> —Cu1—C3—C6	4.5 (2)	O1W <sup>i</sup> —Cu1—O7—C6	-84.98 (13)
O7 <sup>i</sup> —Cu1—C3—C6	179.52 (10)		

Symmetry code: (i)  $-x+1, -y+1, -z$ .

#### Hydrogen-bond geometry ( $\text{\AA}$ , $^\circ$ )

<i>D</i> —H $\cdots$ <i>A</i>	<i>D</i> —H	H $\cdots$ <i>A</i>	<i>D</i> $\cdots$ <i>A</i>	<i>D</i> —H $\cdots$ <i>A</i>
N1—H1 $\cdots$ O1W <sup>ii</sup>	0.88	1.93	2.710 (2)	147
O1W—H1WA $\cdots$ O8 <sup>iii</sup>	0.83 (2)	1.86 (2)	2.667 (2)	163 (3)
O1W—H1WB $\cdots$ O7 <sup>iv</sup>	0.82 (2)	1.96 (2)	2.709 (2)	153 (3)
O2W—H2WA $\cdots$ O2W <sup>v</sup>	0.83 (2)	1.95 (2)	2.7792 (15)	178 (3)
O2W—H2WB $\cdots$ O8	0.81 (2)	2.04 (2)	2.854 (2)	175 (3)

Symmetry codes: (ii)  $-x+1, -y+1, -z-1$ ; (iii)  $-x, -y+1, -z$ ; (iv)  $x, y, z-1$ ; (v)  $x, -y+1/2, z-1/2$ .