

## Genetic differentiation in red-bellied piranha populations (*Pygocentrus nattereri*, Kner, 1858) from the Solimões-Amazonas River

Carlos Henrique dos A. dos Santos<sup>1,2</sup>, Carolina S. de Sá Leitão<sup>1</sup>, Maria de N. Paula-Silva<sup>1</sup> & Vera Maria F. Almeida-Val<sup>1,2</sup>

<sup>1</sup>Laboratório de Ecofisiologia e Evolução Molecular, Instituto Nacional de Pesquisas da Amazônia, Av. André Araújo 2936, Aleixo, 69060-001 Manaus, Brasil

<sup>2</sup>Laboratório de Genética Aplicada à Aquicultura & Biologia Molecular, Universidade Nilton Lins, Programa de Pós-Graduação em Aquicultura, Av. Professor Nilton Lins 3259, Parque das Laranjeiras, 69058-030 Manaus, Brasil

### Keywords

Biological populations, gene flow, genetic diversity, geographical distance, management.

### Correspondence

Carlos Henrique dos Anjos dos Santos, Instituto Nacional de Pesquisas da Amazônia, Laboratório de Ecofisiologia e Evolução Molecular, Av. André Araújo, 2936, Aleixo, 69060-001, Manaus, Amazonas, Brasil. Tel.: +55 (92) 3643-3190; Fax: +55 (92) 3643-3186; E-mail: carloshenriqueufc@gmail.com

### Funding Information

This work was funded by the Petrobrás, FINEP, CNPq, CAPES, and FAPEAM through the different phases of Project PIATAM (field collection), and through the INCT ADAPTA (laboratory analysis). Carlos Henrique dos Anjos dos Santos is the recipient of a research fellowship by PCI/CNPq; Carolina Sousa Sá Leitão had a PhD scholarship, CNPq; and Vera Maria Fonseca de Almeida e Val is granted with a research fellowship by CNPq – status1B. This work is part of INCT ADAPTA, coordinated by Adalberto Luis Val.

Received: 12 January 2016; Revised: 13 April 2016; Accepted: 26 April 2016

*Ecology and Evolution* 2016; 6(12): 4203–4213

doi: 10.1002/ece3.2195

## Introduction

In general, fish species are not genetically homogeneous, but structured in groups of individuals who are relatively isolated. The identification of genetically homogenous groups is the basic unit for fish management,

## Abstract

Red-bellied piranhas (*Pygocentrus nattereri*) are widely caught with different intensities throughout the region of Solimões-Amazonas River by local fishermen. Thus, the management of this resource is performed in the absence of any information on its genetic stock. *P. nattereri* is a voracious predator and widely distributed in the Neotropical region, and it is found in other regions of American continent. However, information about genetic variability and structure of wild populations of red-bellied piranha is unavailable. Here, we describe the levels of genetic diversity and genetic structure of red-bellied piranha populations collected at different locations of Solimões-Amazonas River system. We collected 234 red-bellied piranhas and analyzed throughout eight microsatellite markers. We identified high genetic diversity within populations, although the populations of lakes ANA, ARA, and MAR have shown some decrease in their genetic variability, indicating overfishing at these communities. Was identified the existence of two biological populations when the analysis was taken altogether at the lakes of Solimões-Amazonas River system, with significant genetic differentiation between them. The red-bellied piranha populations presented limited gene flow between two groups of populations, which were explained by geographical distance between these lakes. However, high level of gene flow was observed between the lakes within of the biological populations. We have identified high divergence between the Catalão subpopulation and all other subpopulations. We suggest the creation of sustainable reserve for lakes near the city of Manaus to better manage and protect this species, whose populations suffer from both extractive and sport fishing.

conservation, and sustainable use of genetic resources (Laikre et al. 2005). Thus, the knowledge of these groups' structure is vital to reduce the risk of wild stocks depletion (Ryman and Utter 1987). The level of structure in natural populations are, then, of great importance for the evolutionary potential of the target population (Waples

1998; Begga and Waldman 1999), and then, for increasing populations immediate viability if inbreeding depression, decline of biological population, or local extinction are taking place (Allendorf and Ryman 2002; Laikre *et al.* 2005). In such context, it is clear that the levels of genetic structure are the kind of information that supports strategies for management of exploited stocks (Ricker 1981). Thus, determining and identifying fish stocks are the important tasks to distinguish one population from a set of geographically distributed subpopulations whose demographic and genetic histories are largely independent of other groups and present some degree of reproductive isolation (Saila and Jones 1983; Waples 1998; Cadrin and Secor 2009).

The red-bellied piranha, *Pygocentrus nattereri*, is one of the most abundant fish species living in the floodplain lakes (Várzea lakes) of the Solimões-Amazonas river system (Merona and Bittencourt 1993; Saint-Paul *et al.* 2000), occurring also in “igapós” (flooded forests) and margins of Rio Negro. Their biological and demographic characteristics suggest that this species is very well adapted to survive in the floodplain environments (Bittencourt 1994). *P. nattereri* is popularly known as a voracious and aggressive predator. However, it is widely consumed and marketed by local fisherman (Silva and Araújo-Lima 2003). We must emphasize that the red-bellied piranha is fairly wide distributed in South American basins, being found in the river basins of Orinoco (Machado-Allison and Fink 1995), São Francisco, Paraná and Prata (Lowe-McConnell 1987; Hubert and Renno 2006). In general, all piranhas’ species occur in freshwater systems of Neotropical region and belong to the Serrasalminae family, whose main genera are *Serrasalmus* and *Pygocentrus* (Mirande 2010).

Freshwater ichthyofauna of the Amazon basin has a large number of species well adapted to survive highly dynamics (annual flood pulses), warm and hypoxic waters (see the term Flood Pulses by Junk *et al.* 1989; Ruffino and Isaac 1995; Guyot *et al.* 1999), but are rather subject to the global changes (Costa and Foley 1999; Davidson *et al.* 2012). In recent years, the water bodies of the Amazon have suffered constant anthropic problems such as oil spills by petroleum vessels, construction of oil and gas pipelines, rivers obstructed by hydroelectric power plants, urban sewages launched in water, and overexploitation of fishery resources. Disturbances in this environment have changed many ecological niches of highly susceptible species, and this has directly influenced the entrance or recruitment of new individuals in adult stocks, producing significant changes in the size of wild populations.

Some authors have suggested that these changes have significantly influenced the contemporary gene flow of local population (Castric *et al.* 2001; Costello *et al.* 2003).

Moreover, while the environmental heterogeneity has contributed to increase of genetic structure of wild populations, floodplains have acted as a homogeneous disperser of genetic diversity between the lakes of the Amazon basin (Hubert *et al.* 2007). Considering such complexity and variety of environments in the Amazon region, it is crucial to evaluate fish stocks at the genetic levels aiming to identify possible changes in the genetic patterns between subpopulations. This is the best way to improve fisheries management in the region and contribute to public policies aiming to increase preservation and conservation of overexploited stocks.

Genetic studies conducted with the piranhas have been focused merely in phylogenetic information within the family Serrasalminae (Hubert *et al.* 2007; Mirande 2010), leaving some gaps in our knowledge about genetic diversity within and among populations in their natural environment. Thus, the main goal of this study is to provide valuable information of populations’ genetics of the red-bellied piranha occurring in Amazon basin, intending to describe the occurrence of genetically differences caused by geographical distribution and environmental characteristics.

We hypothesize that panmixia occurs in the red-bellied piranha population distributed along the floodplain lakes of the Solimões-Amazonas river systems. To test this hypothesis, we used microsatellite markers to describe the levels of genetic differentiation and gene flow between its subpopulations, and their genetic diversity found within and between each subpopulation.

## Material and Methods

### Sample collection

Specimens from wild populations of red-bellied piranhas (Fig. 1) were caught in eight lakes of the Solimões-Amazonas River system (Table 1 and Fig. 2). In total, we collected 234 red-bellied piranhas and stored in ice. They were euthanized with a sharp blow to their head according to the Brazilian Guidelines for Ethical Care and Use of Animals (CONCEA 2013). The samples of white muscle tissue were stored in liquid nitrogen, until the total genomic DNA extraction was performed. Fish collection authorization was approved by SISBIO under no. #29837-4.

### DNA extraction and PCR amplification

PCR amplification and data analysis were performed according to Nascimento *et al.* (2011) and Santos *et al.* (2014). DNA extraction method was performed as described by Sambrook *et al.* (1989): 100 mg of tissue was digested overnight at 37°C in 0.7 mL of lysis buffer (6 M urea, 10 mM Tris-HCl, 125 mM NaCl, 1% SDS,



**Figure 1.** Specimen of *Pygocentrus nattereri*, a Neotropical fish from Solimões-Amazonas River System in Brazil. Photograph credit: Waldir Heinrichs.

**Table 1.** Location of eight red-bellied piranha populations in Solimões-Amazonas River, Brazil.

Location	Code	Latitude (S)	Longitude (W)	Sample size
Praia	PRA	-3.209425	-59.896926	30
Camboa	CAM	-3.201798	-59.559440	30
Reis	REI	-3.151750	-59.695396	30
Catalão	CAT	-3.155607	-59.907054	30
São Tomé	STO	-3.801975	-61.516106	30
Ananá	ANA	-3.530318	-61.568055	30
Araçá	ARA	-3.859774	-62.342484	30
Maracá	MAR	-3.826554	-62.559807	24

Code is short name of lakes in Solimões-Amazonas River.

10 mM EDTA, pH 7.5). After that, we added 10  $\mu$ L of proteinase K (Fermentas, Waltham, MA, USA), RNase A (Invitrogen, Waltham, MA, USA), and 1,4-dithiothreitol (Biosynth<sup>®</sup> Chemistry and Biology, Rietlistr, Staad, Switzerland). After the digestion, we washed the samples with phenol-chloroform-isoamyl alcohol (Invitrogen, Waltham, MA, USA) and isopropanol on ice. The pellet was resuspended in 50  $\mu$ L DNase-free H<sub>2</sub>O. We verified the quality of the extracted DNA by electrophoresis in a 1.5% agarose gel using GelRed<sup>®</sup> (Invitrogen, Waltham, MA, USA) and visualized it using an L-PIX Molecular Image transilluminator (Loccus Biotecnologia, Cotia, SP, Brazil). We

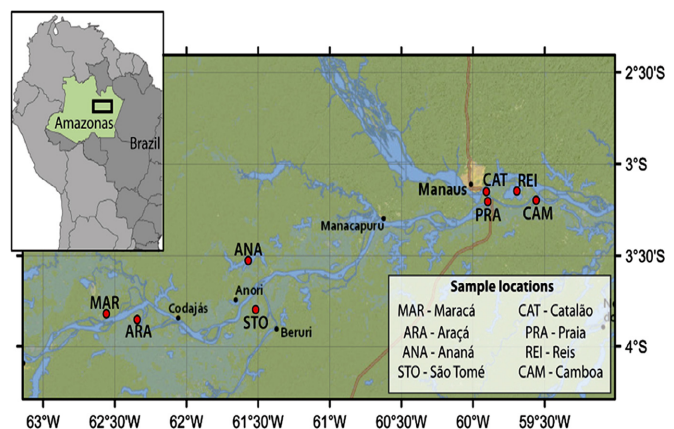
quantified the DNA using a NanoDrop<sup>®</sup> 2000 spectrophotometer (Thermo Scientific, Waltham, MA, USA).

The *P. nattereri* samples were genotyped using the eight microsatellite loci (*PN1*, *PN2*, *PN3*, *PN5*, *PN6*, *PN7*, *PN11*, and *PN13*) developed by Nascimento et al. (2011). We performed the polymerase chain reactions (PCR) using a 96-well Veriti<sup>™</sup> Thermal Cycler (Applied Biosystems, Waltham, MA, USA) in a final reaction volume of 10  $\mu$ L. Each PCR contained 1.5  $\mu$ L of genomic DNA (50 ng/ $\mu$ L), 1.0  $\mu$ L of forward primer (0.4 mM), 1.5  $\mu$ L of reverse primer (0.4 mM), 1.0  $\mu$ L 6-FAM fluorescent M13 primer (Schuelke 2000) (0.4 mM), and 5.0  $\mu$ L PCR Master Mix 2X (Fermentas, Waltham, MA, USA), which contains Taq DNA polymerase (0.05 U), MgCl<sub>2</sub> (1.5 mM), and dNTPs (0.4 mM). The PCR cycling conditions were as follows: 1 cycle at 94°C for 3 min; 20 cycles at 94°C for 20 sec, 55–58°C for 20 sec (annealing temperature; see Nascimento et al. 2011), and 68°C for 30 sec; 25 cycles at 94°C for 20 sec, 53°C for 20 sec, and 68°C for 30 sec; and finally, the extension cycle was performed at 72°C for 10 min. We confirmed the amplified PCR products by electrophoresis in a 1.5% agarose gel using GelRed<sup>®</sup> (Invitrogen, Waltham, MA, USA), and we visualized it using an L-PIX Molecular Image transilluminator (Loccus Biotecnologia, Cotia, SP, Brazil). The amplified products were genotyped on an ABI 3130xl Genetic Analyzer (Applied Biosystems, Waltham, MA, USA) using the GeneScan Liz-500 (-250) standard size (Applied Biosystems, Waltham, MA, USA) to determine fragment length. The alleles were scored based on the consistent pattern of their stutter peaks, and on the peak intensity corresponding to each individual at each locus using GeneMapper v4.0 (Applied Biosystems, Waltham, MA, USA).

## Data analysis

We tested microsatellite data from red-bellied piranha populations for linkage disequilibrium (LD) and Hardy–

**Figure 2.** Locations of *Pygocentrus nattereri* sampling in the Solimões-Amazonas River System. Color legend indicates the Lakes location in the map where populations were collected.



Weinberg equilibrium (HWE) using Fstat v2.9.3.2 software (Goudet 2001). We used Bonferroni's correction for multiple comparisons (Rice 1989) at a significance level of 5%. Micro-checker v2.3 software (van Oosterhout *et al.* 2004) was used to check for detection of null alleles and for scoring errors in large alleles and stutter peaks. In addition, we calculated the frequency of null alleles using Cervus v3.0.3 software (Kalinowski *et al.* 2007).

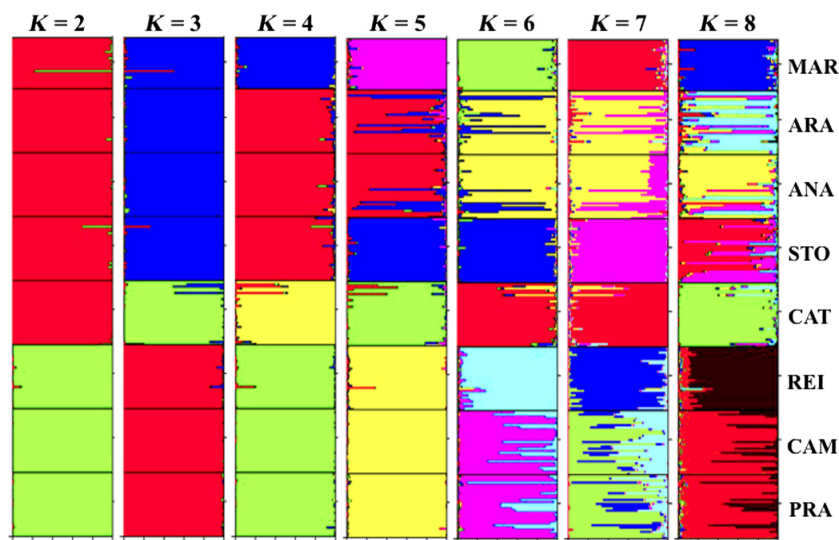
We estimated the allelic diversity by the total number of alleles (TNA), mean number alleles (MNA), number of private alleles (NPA) (run by GDA v1.1 software, Lewis and Zaykin 2000), allelic richness (AR) (run by Fstat v2.9.3.2 software), and number of effective alleles (NEA) calculated by a mathematical model:  $NEA = 1/(1 - H_E)$ . We estimated the genetic diversity by the observed ( $H_O$ ) and expected heterozygosity ( $H_E$ ) in Hardy–Weinberg equilibrium, fixation index ( $F_{IS}$ ) (run by Genetix v4.05.2 software, Belkhir *et al.* 2004), polymorphism information content (PIC) (run by Cervus v3.0.3 software), internal diversity (ID), and gain/loss of genetic diversity (run by Molkin v3.0 software, Gutiérrez *et al.* 2005).

The levels of genetic differentiation in red-bellied piranhas populations were analyzed using Wright's  $F$ -statistics ( $F_{IT}$ ,  $F_{IS}$  and  $F_{ST}$ , Weir and Cockerham 1984) run by Arlequin v3.5 software (Excoffier and Lischer 2010). The additional analysis of the differentiation indices utilized the following:  $F_{ST}$ , which assumes the Infinite Allele Model (IAM, Kimura and Crow 1964);  $R_{ST}$  (Slatkin 1995) which assumes the Stepwise Mutation Model (SMM, Kimura and Otha 1978) (run by Arlequin v3.5 software); and  $D_{ST}$  (Nei 1973), which assumes a total differentiation between populations (run by Smogd v1.2.5 software, Crawford 2010). We calculated the number of migrants ( $N_m$ ) between populations by applying the  $F_{ST}$  values

using the Arlequin v3.5 software. We analyzed the molecular variance (AMOVA, Excoffier and Slatkin 1995) in red-bellied piranha populations using the Arlequin v3.5 software at the significance level of 5%.

Isolation by distance (IBD) over the distribution area was assessed by testing the correlation between genetic and geographical distances considering all population pairs in using the regression of  $F_{ST}/(1 - F_{ST})$  estimates on distance for populations, as suggested by Rousset (1997). This model was tested using Mantel's tests (Mantel 1967). For geographical distances, we considered straight-line distances between all pairs of sampling sites. IBD was also tested in each cluster of populations identified according to the results of the clustering analysis (see Fig. 3,  $K = 2$ ) with the same procedure. All these tests and calculations were performed with IBDWS v3.2.3 (Jensen *et al.* 2005).

While analyzing the populations' structure, we applied the mixture model (Admixture) ancestor, which correlates with the gene frequency among the studied populations, using Structure v2.3.1 software (Pritchard *et al.* 2000; Falush *et al.* 2003), with a burn-in of 50,000 followed by 200,000 steps using the Markov chain Monte Carlo's method (MCMC). We applied the value of  $\Delta K$  (suggested by Evanno *et al.* 2005) to identify the highest level of genetic division hierarchy, which divided the populations and repeated the analysis for each division. Each analysis was performed using  $K = 1$  and  $K = (\text{number of populations} + 2)$ , with five replicates for each  $K$ . To complement the analysis of the population structure, we performed a factorial correspondence analysis (FCA, Benzecri 1973) using Genetix v4.05.2 software (Belkhir *et al.* 2004), which assumes a genetic distance between populations. A UPGMA tree was built based on the genetic



**Figure 3.** Diagrams showing the identification of genetic structure of red-bellied piranha populations from the Solimões-Amazonas River System, including eight lakes. From left to right, increasing values for  $K$  show the higher structure of Catalão lake (CAT) subpopulation (see text for explanation). The best results of Delta- $K$  (Table S1 and Fig. S1) suggest the existence of two biological populations ( $K = 2$ ) for the Solimões-Amazonas river: population A (green) and population B (red), respectively, in the first diagram from left to right. The genetic structure found in software Structure were also confirmed by the UPGMA tree (Fig. 5) and FCA (Fig. 6).



distance ( $D_A$ ) using GDA v1.1 software (Lewis and Zaykin 2000).

## Results

A total of 388 alleles were found in the eight subpopulations of red-bellied piranha distributed among eight microsatellite loci. An overall average of 48.5 allele/population was observed, and the variation of alleles between subpopulations was 39 alleles to fish from lake MAR and 58 alleles to fish from lake CAM. The number of effective alleles was 2.838 (with variation of 2.058–3.559) (Table 2). We found a total of 44 private alleles, with one private allele in fish of lake ANA and 14 private alleles in fish lake CAM. However, we did not find any private allele in the subpopulation of lake ARA (see Table 2), which indicates the distribution or share of all alleles with other subpopulations.

The results showed the absence of null alleles in all populations, and this information was confirmed when we found the frequency values of possible null alleles in Cervus (value frequency of null alleles < 0.1) (Table 3).

In addition, we did not find any deviation from either the Hardy–Weinberg equilibrium (HWE) or the linkage disequilibrium (LD) in microsatellite loci after Bonferroni's correction, showing that these markers have an independent distribution.

Populations of red-bellied piranhas showed high genetic variability ( $H_O$ : 0.504 - 0.843), and ( $H_E$ : 0.514–0.719) (Table 2). Considering all microsatellite loci, the  $H_E$  and  $H_O$  values ranged from 0.578 to 0.898 and from 0.535 to 0.752, respectively. The average PIC was 0.615, with variation of 0.503 (PN1) to 0.881 (PN7) (Table 3). The inbreeding coefficient ( $F_{IS}$ ) ranged from –0.176 (lake PRA) to 0.183 (lake MAR). Only the subpopulation of lake MAR presented  $F_{IS}$  values above 0.1. We also identified that the subpopulations of the lakes ANA, ARA, and MAR showed lack of heterozygotes, with a trend for loss of genetic variability in these subpopulations.

The indices of genetic differentiation of subpopulations of the analyzed species showed significantly different values ( $P < 0.05$ ) for microsatellite loci (Table 3), analysis of molecular variance – AMOVA (Table 5), and pairwise of

**Table 2.** Genetic diversity indices in red-bellied piranha populations based on eight microsatellite loci.

Populations	N	Allelic diversity					Genetic diversity					
		TNA	MNA	NEA	AR	NPA	$H_O$	$H_E$	PIC	$F_{IS}$	loss/gain	ID
PRA	30	57	7.125	3.559	6.416	4	0.843	0.719	0.699	–0.176	1.616	1.687
CAM	30	58	7.250	3.436	6.340	14	0.725	0.709	0.681	–0.063	1.568	1.262
REI	30	45	5.625	2.967	5.111	4	0.716	0.663	0.638	–0.082	0.359	0.375
CAT	30	50	6.250	2.703	5.678	13	0.668	0.630	0.623	–0.063	2.648	0.263
STO	30	49	6.125	2.857	5.451	4	0.741	0.650	0.639	–0.141	0.209	0.184
ANA	30	45	5.625	2.058	4.941	1	0.477	0.514	0.481	0.072	–1.938	–2.431
ARA	30	45	5.625	2.525	5.148	–	0.571	0.604	0.559	0.055	–1.328	–0.739
MAR	24	39	4.875	2.597	4.674	4	0.504	0.615	0.599	0.183	–0.002	–0.585

N, samples size; TNA, total number of alleles; MNA, mean number of alleles; NEA, number of affective alleles; AR, allelic richness; NPA, number of private alleles;  $H_O$ , observed heterozygosity;  $H_E$ , genetic diversity (expected heterozygosity in Hardy–Weinberg equilibrium); PIC, polymorphism information content;  $F_{IS}$ , inbreeding coefficient of population; Loss(–)/gain(+), loss or gain genetic and ID, internal diversity.

**Table 3.** Values of the genetic differentiation indices in red-bellied piranha populations based on eight microsatellite loci.

Loci	Na	$H_E$	$H_O$	PIC	$F_{IS}$	$F_{IT}$	$F_{ST}$	$R_{ST}$	$D_{ST}$	F (Null)
PN 1	11	0.590	0.535	0.503	0.093*	0.147*	0.054*	0.045*	0.027*	0.049
PN 2	12	0.578	0.573	0.552	0.008	0.207*	0.199*	0.406*	0.104*	0.003
PN 3	17	0.835	0.745	0.815	0.108*	0.319*	0.211*	0.793*	0.155*	0.059
PN 5	18	0.792	0.743	0.768	0.062*	0.331*	0.269*	0.843*	0.191*	0.028
PN 6	19	0.790	0.652	0.762	0.175*	0.297*	0.122*	0.214*	0.085*	0.076
PN 7	21	0.898	0.704	0.887	0.217*	0.374*	0.157*	0.521*	0.133*	0.094
PN 11	18	0.868	0.646	0.852	0.256*	0.601*	0.345*	0.259*	0.280*	0.093
PN 13	13	0.854	0.752	0.854	0.120*	0.291*	0.171*	0.223*	0.134*	0.058

Na, number alleles by loci;  $H_E$ , genetic diversity (expected heterozygosity in Hardy–Weinberg equilibrium);  $H_O$ , observed heterozygosity; PIC, polymorphism information content;  $F_{IS}$ , fixation index of the subpopulations;  $F_{IT}$ , fixation index of the total population;  $F_{ST}$ , fixation index result for the comparison of the populations to the total populations;  $R_{ST}$ , analogous to  $F_{ST}$  of microsatellites markers;  $D_{ST}$ , analogous to  $F_{ST}$  and F(null), frequency of null alleles; level of significance, \* $P < 0.05$ .

**Table 4.** Pairwise population Nm values based on  $F_{ST}$  (above diagonal) and pairwise  $F_{ST}$  values (below diagonal) for red-bellied piranha populations based on eight microsatellite loci.

Lagos	PRA	CAM	REI	CAT	STO	ANA	ARA	MAR
PRA	–	<u>9.49</u>	<u>3.70</u>	0.73	0.94	0.76	0.93	0.95
CAM	<b>0.022</b>	–	<u>3.90</u>	0.69	0.91	0.73	0.89	0.87
REI	<b>0.071</b>	<b>0.059</b>	–	0.66	<u>1.01</u>	0.74	0.93	0.90
CAT	<b>0.219</b>	<b>0.239</b>	<b>0.258</b>	–	0.85	0.84	0.90	0.76
STO	<b>0.109</b>	<b>0.096</b>	<b>0.073</b>	<b>0.220</b>	–	<u>1.19</u>	<u>1.78</u>	<u>1.29</u>
ANA	<b>0.223</b>	<b>0.175</b>	<b>0.160</b>	<b>0.297</b>	<b>0.063</b>	–	<u>2.30</u>	0.86
ARA	<b>0.130</b>	<b>0.098</b>	<b>0.082</b>	<b>0.223</b>	<b>0.058</b>	<b>0.049</b>	–	<u>1.78</u>
MAR	<b>0.151</b>	<b>0.170</b>	<b>0.165</b>	<b>0.319</b>	<b>0.065</b>	<b>0.215</b>	<b>0.058</b>	–

Bold data show statistically significant differences ( $P < 0.05$ ;  $P = 0.001786$  Bonferroni correction). Dashed lines indicate gene flow between populations within of biological population (above of one individual/generation).

$F_{ST}$  (Table 4). We found high  $F_{ST}$  values in pairwise when compared to subpopulation of the lake CAT with other subpopulations analyzed, and smaller  $F_{ST}$  values in pairwise within each cluster or biological populations (Table 4 and Fig. 3). Gene flow was higher within the biological populations, but lower between clusters formed for the red-bellied piranha populations (See Table 4). However, gene flow was higher in the lakes nearby Manaus because they do have greater connectivity (PRA, CAM, and REI).

Isolation by distance data (IBD) shows that the geographical distance between the lakes located at the Solimões-Amazonas River systems has strong influence on the red-bellied populations (Fig. 4). However, subpopulation from lake CAT shows divergence from IBD data, suggesting that this subpopulation may be locally adapted (Table S2).

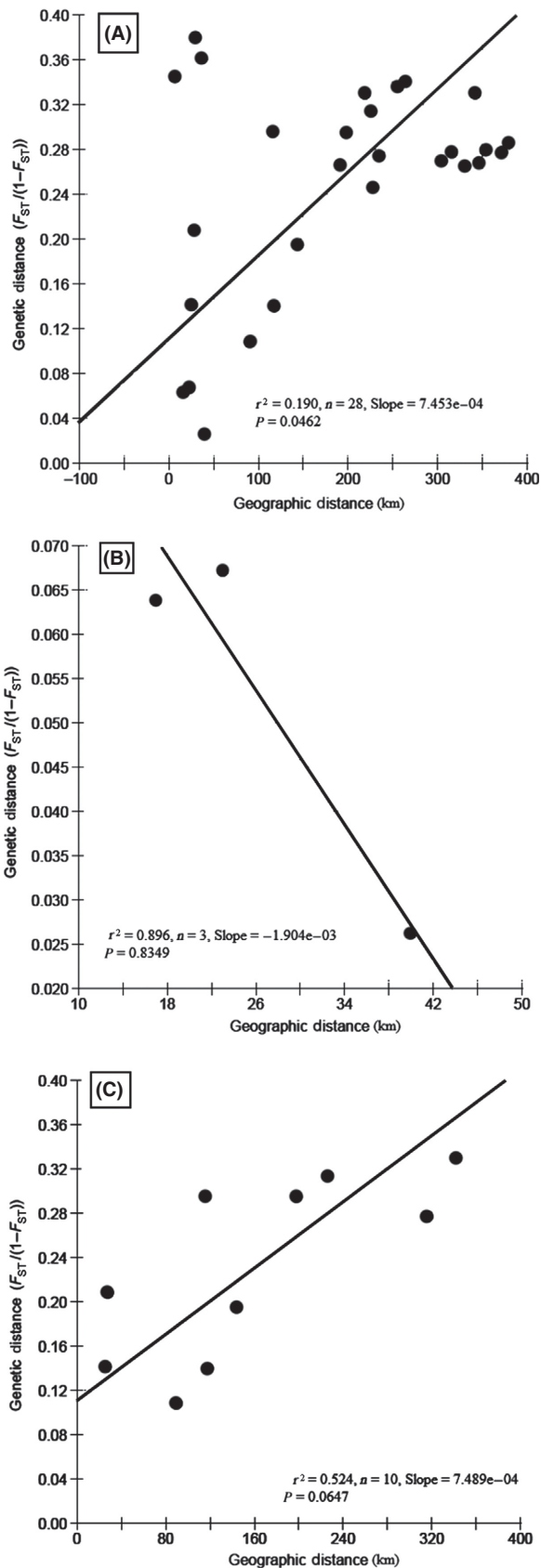
The structure was used for clustering of individuals in  $2 \leq K \leq 8$  software; however, the lower value of  $K$  ( $K = 2$ ) was the better explanation for the subpopulations of red-bellied piranha, joining fish from the lakes PRA, CAM, and REI, which formed an independent cluster. In  $K = 3$  to  $K = 8$ , the subpopulation of the lake CAT resulted in a separated subpopulation, forming an isolated cluster data set in the cluster diagram of  $K = 3$ . In fact, for this population, the great the  $K$ , the great was the isolation however, considering all subpopulations. The higher  $\Delta K$  was  $K = 2$  (see Fig. 3, Table S1 and Fig. S1). Similar data have been found in the UPGMA analysis, as well as in the FCA analysis, where one may see the high divergence from the subpopulation of lake CAT (Figs. 5 and 6). These data can be compared with  $K$  analysis, where  $K = 3$  and  $K = 8$  are consistent with the existence of one divergent subpopulation at Catalão lake (CAT). Finally, the Bayesian inference analysis suggests the existence of two biological populations of red-bellied piranhas in the Solimões-Amazonas River system (Fig. 3, Table S1 and Fig. S1): one biological subpopulation in the lakes of

Rio Solimões basin and another biological subpopulation in the located at Rio Negro. Catalão lake (CAT) is the single place located right in the meeting of these two rivers, where black and white water mixture, completely changing their physicochemical parameters.

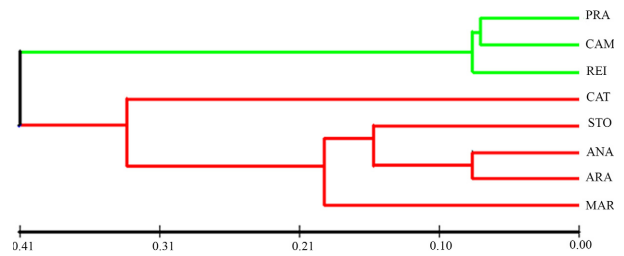
## Discussion

Considering the data obtained herein, we can affirm that the genetic variation in red-bellied piranha populations is strongly related to a subdivision into two biological populations (Table 2). Firstly, we documented a pattern of higher genetic variation in the subpopulations of the lakes PRA, CAM, and REI located at Rio Amazonas, which largely reflects their geographical configuration. There, population differentiation was generally high and remarkably suggested a genetic signature of the individual subpopulations exceeding the signature of population clusters on single lakes. Secondly, lower genetic variation was detected in the subpopulations of the lakes CAT, STO, ANA, ARA, and MAR located at Rio Solimões (red cluster; Figs. 3, S1 and Table S1,  $K = 2$ ) compared to the subpopulations of the lakes PRA, CAM, and REI (green clusters; Figs. 3, S1 and Table S1,  $K = 2$ ). We have identified loss of genetic diversity only in the subpopulations of the Solimões lakes ANA, ARA, and MAR, suggesting a long-term isolation of such populations (Table 2). Our findings shed light on the relationship between genetic variation and geographic distance for this species.

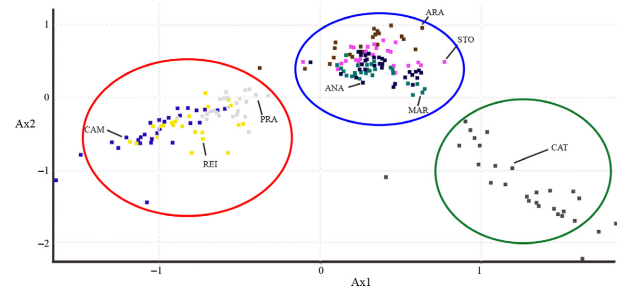
Escobar et al. (2015) reported that *Piaractus brachypterus* (Serrasalminae) populations inhabiting the Orinoco basin and the Amazon basin had similar allelic diversity; however, the heterozygosity levels were reduced in populations of the Orinoco. Moreover, Santos et al. (2007) found a high genetic variability in *Colossoma macropomum* (Characiforms) populations living in the Rio Amazonas channel, but no genetic differentiation between them, suggesting that this species, which also belongs to



**Figure 4.** Isolation by distance (IBD) pattern in the distribution area. Relationships between genetic and geographic distance among the eight red-bellied piranha populations. (A) Positive correlation between genetic [estimated by  $F_{ST}/(1 - F_{ST})$ ] and geographical distances (km) for all pairs of sampled populations. (B) Negative correlation between genetic and geographical distance (km) for the pairs of PRA, CAM, and REI subpopulations. (C) Positive correlation between genetic and geographical distance (km) for the pairs of CAT, STO, ANA, ARA, and MAR subpopulations (see Fig. 3 for the definition of these groups).



**Figure 5.** Representation of UPGMA tree for red-bellied piranha populations in the lakes of Solimões-Amazonas River. Red-bellied piranhas' populations are divided in two biological populations of the Solimões-Amazonas River (Fig. 3); however, red-bellied piranha populations of CAT lake (Rio Amazonas) showed greater genetic similarities with the populations of lakes in the Solimões River.



**Figure 6.** Factorial component analysis (FCA) shows the distribution of spatial variation in red-bellied piranhas' populations for lakes in the Solimões-Amazonas River System. The quarters right ( $Ax1 > 0$ ) shows the piranhas populations in the STO, ANA, ARA, MAR, and CAT lakes forming a genetically distinct group, and the quarters left ( $Ax1 < 0$ ) show another genetic group for the PRA, REI, and CAM lakes, respectively. The formation of these two biological populations is also found in the analysis of structure (Fig. 3) and UPGMA tree (Fig. 5; by software GDA). The above ( $AX2 > 0$ ) and below quarters ( $AX2 < 0$ ) shows the spatial distribution of the red-bellied piranha populations from the geographical location (longitudinal), which represent the areas of collections of populations in the natural environment for the Solimões-Amazon River (Fig. 2 and Table 1).

Serralmidae family, compose a single panmictic population. Gomes et al. (2013), investigating *Salminus brasiliensis* (Characiforms) populations in Paranapanema River basin, observed high levels of genetic variability using

RAPD markers, and high levels of genetic structure in its populations. These results suggest that the species belonging to the Order Characiformes have high genetic variability; however, a decrease in gene flow can induce differentiation between populations. According to Solé-Cava (2001), the typical wild population presents high values of genetic variability. However, we found the opposite in this study, mainly for some subpopulations from rio Solimões lakes.

In fact, former cytogenetic studies described karyotypic variations between red-bellied piranhas populations collected in different basins (Nakayama *et al.* 2008; Santana *et al.* 2011). The present results show structuring patterns that result in subpopulations collected from the same basins, suggesting the existence of barriers that impair gene flow among them. Therefore, we suggest that the subpopulations of red-bellied piranhas cannot be considered panmictic, and that further management of these populations must consider their genetic characteristics that suggest different specific genetic stocks.

The present data also show high genetic differentiation among red-bellied piranha populations in the Solimões-Amazonas River systems (Tables 4 and 5). Actually, the geographical distance between the lakes causes such high genetic differentiation, which is resulted from a decrease in gene flow among populations. The identification of a significant IBD pattern does not necessarily imply the absence of sharp discontinuities in gene frequencies, and the identification of IBD can help to show equilibrium between migration and genetic drift (contemporary processes), or to link limited dispersal ability and genetic differentiation (Garnier *et al.* 2004).

Considering isolation of populations among the lakes during low water season, there is a reduction in the connection between the most distant lakes; such that the gene flow is limited between the two biological populations, and the geographical distance has a strong influence on the migration of the species between the lakes.

In addition, we can suggest that the flood pulses (Junk *et al.* 1989; Bittencourt 1994) did not contributed enough to maintain gene flow among these subpopulations due to the large geographical distance between some lakes. In

contrast, we found high levels of gene flow in the three lakes located nearby Manaus, and this fact is due to the higher connectivity between the lakes (Table 4), which, coincidentally, are located in rio Amazonas (when Rio Negro have already entered Rio Solimões, forming Rio Amazonas), where water quality is completely different from that of Rio Solimões.

Aguirre *et al.* (2013) observed that populations of *Hoplias microlepis* (Characiformes) have low genetic differentiation within populations of rivers or artificial dams, but present high genetic differentiation between these rivers and the artificial dams. Santos *et al.* (2007) detected lower genetic differentiation among *C. macropomum* populations in the rio Amazonas, while Farias *et al.* (2010) detected high genetic differentiation among *C. macropomum* populations living both in the Amazon basin and in the subbasin of Bolivia.

The present data corroborate the results obtained by Santos *et al.* (2007), Farias *et al.* (2010), and Aguirre *et al.* (2013) that clearly showed that the populations of Characiformes tend to have higher genetic differentiation whenever there are barriers that disrupt gene flow. Merila and Crnokrak (2001) and McKay and Latta (2002) suggested that the quantification of genetic differentiation degrees between subpopulations may be the result of traits under strong divergent selection, and that high  $F_{ST}$  values are expected. Moreover, these authors also mention that this is one of the ways to identify traces of local adaptation.

The adaptive evolutionary plasticity is another alternative for local adaptation and can be manifested as a reduction of the phenotypic difference between demes living in different habitats (Sultan and Spencer 2002). However, high rate of gene flow between subpopulations has the ability to reduce the presence of locally adapted residents (Kawecki and Ebert 2004). The premise to result in local adaptation involves little or absence of gene flow between these subpopulations (Fraser *et al.* 2001).

Our results have shown strong evidence of local adaptation to the subpopulation of lake CAT and this is reinforced when we notice the high frequency of private alleles (Table 1), high divergence in the analysis of UPGMA and FCA (Figs. 5 and 6), low gene flow and high  $F_{ST}$  values in pairs between subpopulations (Table 4).

As above-mentioned, the region of lake Catalão corresponds to an environment marked by the beginning of mixed waters of the Rio Solimões (white water) with the Rio Negro (black water) and may have induced local adaptations in the fish living in that kind of watercourses.

Instead, the subpopulations gathered in geographical clusters around Manaus live in a mixed water environment (Rio Amazonas) while the other clusters live in a solely water environment (Rio Solimões), which totally

**Table 5.** Analysis of molecular variance (AMOVA) for red-bellied piranha populations based on eight microsatellite loci.

Source of variation	Sum of squares	Variance components	Percentage variation	P-value
Within individuals	581.500	2.675	84.116	0.000*
Between individuals	506.625	-0.122	-3.832	1.000
Between population	255.093	0.627	19.717	0.000*
Total	1343.218	3.181	-	-

\*Indicates a significant difference at  $P < 0.05$ .



differs from the patterns found in the lake CAT subpopulation from white water clusters. Another interesting fact in this study is that the CAT specimens do not show any phenotypic trait that could distinguish this subpopulation from the other, showing strong correlation with the results described by Sultan and Spencer (2002) for local adaptation.

Structure data, associated with the K-Delta value (Fig. S1 and Table S1), suggest the existence of two red-bellied piranha biological populations in the Solimões-Amazonas River (see Figs. 3, 5, and 6). Vicentin *et al.* (2013) reported that differences between populations might require different strategies for the management of fish resources. According to Escobar *et al.* (2015), the occurrence of distinct populations (Evolutionary Significant Unit, ESU) suggests a requirement for independent management of fishing among the stocks, and that any translocation of stocks by fishing between different populations should be avoided, so no loss of local adaptation or extinction associated with exogamous depression would happen. In this context, we suggest that any resolution that aims to regulate fishing of red-bellied piranhas in the Solimões-Amazonas River systems should take into consideration the existence of two biological populations in the study area.

In conclusion, our results clearly show that the populations located nearby Manaus and in the Varzea Lake's communities might be susceptible to human actions such as environmental pollution and overfishing. Once we observed signs of population expansion in red-bellied piranha populations nearby Manaus city, verified through the NPA's higher values in red-bellied piranha populations from the lakes PRA, CAM, REI, and CAT (see values of NPA, Table 2), we believe that these subpopulations may be under conservation programs as a permanent source of genetic variability. Thus, the creation of a reserve in the surrounding area of these lakes would be an important initiative to restrict anthropic damages to these populations. This action would protect the piranha populations in the region and prevent environmental changes caused by man, avoiding affect genetic health of these piranha populations, which are valuable aquatic resource for food chain in nature, and for human protein access.

## Acknowledgments

We thank Priscila R. Nascimento for her help conducting fieldwork. This work was funded by the Petrobrás, FINEP, CNPq, CAPES, and FAPEAM through the different phases of Project PIATAM (field collection), and through the INCT ADAPTA (laboratory analysis). Carlos Henrique dos Anjos dos Santos is the recipient of a research

fellowship by PCI/CNPq; Carolina Sousa Sá Leitão had a PhD scholarship, CNPq; and Vera Maria Fonseca de Almeida e Val is granted with a research fellowship by CNPq – status1B. This work is part of INCT ADAPTA, coordinated by Adalberto Luis Val.

## Conflict of Interest

The authors declare no conflict of interest.

## References

- Aguirre, W. E., V. R. Shervette, R. Navarrete, P. Calle, and S. Agorastos. 2013. Morphological and genetic divergence of *Hoplias microlepis* (Characiformes: Erythrinidae) in rivers and artificial impoundments of western Ecuador. *Copeia* 2:312–323.
- Allendorf, F. W., and N. Ryman. 2002. The role of genetics in population viability analysis. Pp. 50–85 in S. R. Beissinger, D. R. McCullough, eds. *Population viability analysis*, Chapter 2. University of Chicago Press, Chicago.
- Begga, G., and J. R. Waldman. 1999. An holistic approach to fish stock identification. *Fish. Res.* 43:35–44.
- Belkhir, K., P. Borsa, L. Chikhi, N. Raufaste, and F. Bonhomme. 2004. Genetix 4.05, logiciel sous Windows TM pour la génétique des populations. Laboratoire Génome, Populations, Interactions, CNRS UMR 5000, Université de Montpellier II, Montpellier.
- Benzecri, J. P. 1973. *L'Analyse des données: L'Analyse des Correspondances*, Vol 2. Dunod, Paris.
- Bittencourt, M. M. 1994. Aspectos da demografia e do ciclo de vida de *Pygocentrus nattereri* Kner, 1860 em um lago de várzea da Amazônia Central (Lago do Rei, Ilha do Careiro). 205f. (Tese de Doutorado em Biologia de Água Doce e Pesca Interior), 1994. Instituto Nacional de Pesquisas da Amazônia, Universidade Federal do Amazonas, Manaus, Amazonas, Brasil.
- Cadrin, S. X., and D. H. Secor. 2009. Accounting for spatial population structure in stock assessment: past, present, and future. Pp. 405–425 in R. J. Beamish, B. J. Rothschild, eds., *The future of fisheries science in North America*, Fish & Fisheries Series, Chapter 22. Springer Science + Business Media B.V., New York, USA.
- Castric, V., F. Bonney, and L. Bernatchez. 2001. Landscape structure and hierarchical genetic diversity in the brook charr, *Salvelinus fontinalis*. *Evolution* 55:1016–1028.
- CONCEA. 2013. Diretrizes da prática de eutanásia do Conceia. MCTI, Brasília, P. 54.
- Costa, M. H., and J. A. Foley. 1999. Trends in the hydrologic cycle of the Amazon basin. *J. Geophys. Res.* 104:14189–14198.
- Costello, A. B., T. E. Down, S. M. Pollard, C. J. Pacas, and E. B. Taylor. 2003. The influence of history and contemporary stream hydrology on the evolution of genetic diversity within species: an examination of microsatellite DNA

- variation in bull trout, *Salvelinus confluentus* (Pisces: Salmonidae). *Mol. Ecol.* 57:328–344.
- Crawford, N. G. 2010. SMOGD: software for the measurement of genetic diversity. *Mol. Ecol. Resour.* 10:556–557.
- Davidson, E. A., A. C. Araújo, P. Artaxo, J. K. Balch, I. F. Brown, M. M. C. Bustamante, et al. 2012. The Amazon basin in transition. *Nature* 481:321–328.
- Escobar, M. D., J. Andrade-López, I. P. Farias, and T. Hrbek. 2015. Delimiting evolutionarily significant units of the fish, *Piaractus brachyomus* (Characiformes: Serrasalminae), from the Orinoco and Amazon river basins with Insight on Routes of Historical Connectivity. *J. Hered.* 106:428–438.
- Evanno, G., S. Regnaut, and J. Goudet. 2005. Detecting the number of clusters of individuals using the software Structure: a simulation study. *Mol. Ecol.* 14:2611–2620.
- Excoffier, L., and H. E. L. Lischer. 2010. Arlequin suite version 3.5: a new series of programs to perform population genetics analyses under Linux and Windows. *Mol. Ecol. Resour.* 10:564–567.
- Excoffier, L., and M. Slatkin. 1995. Maximum-likelihood estimation of molecular haplotype frequencies in a diploid population. *Mol. Biol. Evol.* 12:921–927.
- Falush, D., M. Stephens, and J. K. Pritchard. 2003. Inference of population structure using multilocus genotype data: linked loci and correlated allele frequencies. *Genetics* 164:1567–1587.
- Farias, I. P., J. P. Torrico, C. García-Dávila, M. C. F. Santos, T. Hrbek, and J. F. Renno. 2010. Are rapids a barrier for floodplain fishes of the Amazon basin? A demographic study of the keystone floodplain species *Colossoma macropomum* (Teleostei: Characiformes). *Mol. Phylogenet. Evol.* 56:1129–1135.
- Fraser, D. J., L. K. Weir, L. Bernatchez, M. M. Hansen, and E. B. Taylor. 2001. Extent and scale of local adaptation in salmonid fishes: review and meta-analysis. *Heredity* 106:404–420.
- Garnier, S., P. Alibert, P. Audiot, B. Prieur, and J.-Y. Rasplus. 2004. Isolation by distance and sharp discontinuities in gene frequencies: implications for the phylogeography of an alpine insect species, *Carabus solieri*. *Mol. Ecol.* 13:1883–1897.
- Gomes, P. C., N. M. Lopera-Barrero, L. Vargas, D. P. Streit-Junior, J. A. Povh, R. N. Sirol, et al. 2013. Genetic diversity of *Salminus brasiliensis* (Characiformes: Characidae) collected in the passage ladder of the Canoas I hydropower plant in the Paranapanema River, Brazil. *Semina: Ciênc. Agrár.* 34:1421–1432.
- Goudet, J. (2001) Fstat, a program to estimate and test gene diversities and fixation indices (version 2.9.3.2). Available from <http://www.unil.ch/izea/software/fstat.html> (Updated from: Goudet J (1995). Fstat (version 1.2): a computer program to calculate F-statistics. *J. Hered.*, 86, 485–486.
- Gutiérrez, J. P., L. J. Royo, I. Álvarez, and F. Goyache. 2005. MolKin v2.0: a computer program for genetic analysis of populations using molecular coancestry information. *J. Hered.* 96:718–721.
- Guyot, J. L., J. M. Jouanneau, and J. G. Wasson. 1999. Characterisation of the river bed and suspended sediments in the Rio Madeira drainage basin (Bolivian Amazonia). *J. South Am. Sci.* 12:401–410.
- Hubert, N., and J. F. Renno. 2006. Historical biogeography of South American freshwater fishes. *J. Biogeogr.* 33:1414–1436.
- Hubert, N., F. Duponchelle, J. Nuñez, D. Paugy, C. Garcia-Davila, and J. Renno. 2007. Phylogeography of the piranhas genera *Serrasalmus* and *Pygocentrus*: implications for the diversification of the Neotropical Ichthyofauna. *Mol. Ecol.* 16:2115–2136.
- Jensen, J. L., A. J. Bohonak, and S. T. Kelley. 2005. Isolation by distance, web service. *BMC Genet.* 6:13.
- Junk, W. J., P. B. Bayley, and J. S. Sparks. 1989. The flood pulse concept in river floodplain systems. *Can. Spec. Publ. Fish. Aquat. Sci.* 106:110–127.
- Kalinowski, S. T., M. L. Taper, and T. C. Marshall. 2007. Revising how the computer program CERVUS accommodates genotyping error increases success in paternity assignment. *Mol. Ecol.* 16:1099–1106.
- Kawecki, T. J., and D. Ebert. 2004. Conceptual issues in local adaptation. *Ecol. Lett.* 7:1225–1241.
- Kimura, M., and J. Crow. 1964. The number of alleles that can be maintained in a finite population. *Genetics* 49:725–738.
- Kimura, M., and T. Ohta. 1978. Stepwise mutation model and distribution of allelic frequencies in a finite population. *Proc. Natl Acad. Sci.* 75:2868–2872.
- Laikre, L., S. Palm, and N. Ryman. 2005. Genetic population structure of fishes: implications for coastal zone management. *Ambio* 34:111–119.
- Lewis, P. O., and D. Zaykin. 2000. Genetic data analysis: computer program for the analysis of allelic data, Version 1.0. (d15). University of Connecticut, Storrs, CT.
- Lowe-McConnell, R. H. 1987. Ecological studies in tropical fish communities. Cambridge University Press, Cambridge. P. 382.
- Machado-Allison, A., and W. Fink. 1995. Sinopsis de las especies de la subfamilia Serrasalminae presentes en la cuenca del Orinoco: claves, diagnosis e ilustraciones. Serie Peces de Venezuela, Universidad Central de Venezuela, Caracas. P. 90.
- Mantel, N. 1967. The detection of disease clustering and a generalized regression approach. *Cancer Res.* 27:209–220.
- McKay, J. K., and R. G. Latta. 2002. Adaptive population divergence: markers, QTL and traits. *Tren. Ecol. Evol.* 17:285–291.
- Merila, J., and P. Crnokrak. 2001. Comparison of genetic differentiation at marker loci and quantitative traits. *J. Evol. Biol.* 14:892–903.
- Merona, B., and M. M. Bittencourt. 1993. Les peuplements de poissons du Lago do Rei, um lac d'inodation d'Amazonie centrale: description générale. *Amazoniana* 12:415–441.

- Mirande, J. M. 2010. Phylogeny of the family characidae (Teleostei: Characiformes): from characters to taxonomy. *Neotr. Ichthyol.* 8:385–568.
- Nakayama, C. M., E. Feldberg, and L. A. C. Bertollo. 2008. Mapping of ribosomal genes and chromosomal markers in three species of the genus *Serrasalmus* (Characidae, Serrasalminae) from the Amazon basin. *Genet. Mol. Biol.* 31:868–873.
- Nascimento, P. R. M., C. H. A. Santos, C. F. S. Sousa, G. T. Clímaco, M. N. Paula-Silva, and V. M. F. Almeida-Val. 2011. Isolation and development microsatellite markers in the *Pygocentrus nattereri* (Kner, 1858) (Characiformes, Serrasalminae), an important freshwater fish in the Amazon. *Conserv. Genet. Resour.* 3:1–4.
- Nei, M. 1973. Analysis of gene diversity in subdivided populations. *Proc. Natl Acad. Sci.* 70:3321–3323.
- van Oosterhout, C., W. F. Hutchinson, D. P. M. Wills, and P. Shipley. 2004. Micro-checker: software for identifying and correcting genotyping errors in microsatellite data. *Mol. Ecol. Notes* 4:535–538.
- Pritchard, J. K., M. Stephens, and P. J. Donnelly. 2000. Inference of population structure using multilocus genotype data. *Genetics* 155:945–959.
- Rice, W. R. 1989. Analyzing tables of statistical tests. *Evolution* 43:223–225.
- Ricker, W. E. 1981. Changes in the average size and average age of Pacific salmon. *Can. J. Fish. Aquat. Sci.* 38:1636–1656.
- Rousset, F. 1997. Genetic differentiation and estimation of gene flow from F-statistics under isolation by distance. *Genetics* 145:1219–1228.
- Ruffino, M., and V. Isaac. 1995. Reproductive strategies and biological parameters of several Brazilian Amazon fish species. *World Fish Center Quart.* 18:41–45.
- Ryman, N., and F. Utter. 1987. Population genetics and fishery management. Washington Sea Grant Program, Washington. P. 420.
- Saila, S., and C. Jones. 1983. Fishery science and the stock concept. Final Report P.O. NA83- B-A-0078 (MS). US National Marine Fisheries Service, Northeast Fisheries Center, Woods Hole, MA 02543. p. 100.
- Saint-Paul, U., J. Zuanon, M. A. Villacorta Correa, M. Garcia, N. Noemi Fabre, U. Berger, et al. 2000. Fish communities in central white- and blackwater floodplains. *Environ. Biol. Fishes* 57:235–250.
- Sambrook, J., E. F. Fritsch, and T. Maniatis. 1989. Molecular cloning: a laboratory manual, 2nd ed. Cold Springs Harbor Laboratory Press, Cold Springs Harbor, NY.
- Santana, M. P., P. Giongo, N. M. Travenzoli, N. J. Walker, and W. M. S. Sampaio. 2011. Diversidade cariotípica de piranha vermelha (Characiformes, Characidae), rio Salobo, bacia do Araguaia, Pará, Brasil. *Evolução e Conservação da Biodiversidade* 2:98–103.
- Santos, M. C. F., M. L. Ruffino, and I. P. Farias. 2007. High levels of genetic variability and panmixia of the tambaqui *Colossoma macropomum* (Cuvier, 1816) in the main channel of the Amazon River. *J. Fish Biol.* 71:33–44.
- Santos, C. H. A., C. S. Sá Leitão, M. N. Paula-Silva, and V. M. F. Almeida-Val. 2014. Genetic relationships between captive and wild subpopulations of *Arapaima gigas* (Schinz, in Cuvier, 1822). *Int. J. Fish. Aquacult.* 6:108–123.
- Schuelke, M. 2000. An economic method for the fluorescent labeling of PCR fragments. *Nat. Biotechnol.* 18:233–234.
- Silva, E. C. S., and C. A. R. M. Araújo-Lima. 2003. Influência do tipo de alimentação e da temperatura de evacuação gástrica da piranha caju (*Pygocentrus nattereri*) em condições experimentais. *Acta Amazônica* 33:145–156.
- Slatkin, M. 1995. A measure of population subdivision based on microsatellite allele frequencies. *Genetics* 139:457–462.
- Solé-Cava, A. J. 2001. Biodiversidade molecular e genética da conservação. Pp. 171–190 in S. R. Mantioli, ed. *Biologia Molecular e Evolução*. Ribeirão Preto, Editora Holos.
- Sultan, S. E., and H. G. Spencer. 2002. Metapopulation structure favors plasticity over local adaptation. *Am. Nat.* 160:271–283.
- Vicentin, W., F. E. S. Costa, and Y. R. Suárez. 2013. Population ecology of red-bellied piranha *Pygocentrus nattereri* Kner, 1858 (Characidae: Serrasalminae) in the Negro River, Pantanal, Brazil. *Environ. Biol. Fish.* 96:57–66.
- Waples, R. S. 1998. Separating the wheat from the chaff: patterns of genetic differentiation in high gene flow species. *Am. Genet. Assoc.* 89:438–450.
- Weir, B. S., and C. C. Cockerham. 1984. Estimating F-statistics for the analysis of population structure. *Evolution* 38:1358–1370.

## Supporting Information

Additional Supporting Information may be found online in the supporting information tab for this article:

**Figure S1.** Inference of best K using Delta-K values (Evanno et al. 2005) shows the rate of change between successive values of K such that a peak value is interpreted as the “true” K.

**Table S1.** Evanno table output for Structure run with all populations.

**Table S2.** Rousset (1997) distance ( $F_{ST} / 1 - F_{ST}$ ) (above diagonal) and similarity ( $M = (1/F_{ST} - 1)/4$ ) by Stalkin’s (1993) (below diagonal) for red-bellied piranha populations based on eight microsatellite loci.