

Chondroblastoma of the Navicular Bone

Xiao Na Li¹; Zhi Gang Peng¹; Jing Pin Zhao¹; Ze Kun Zhang^{1,*}

¹Department of Radiology, The Third Hospital of Hebei Medical University, Hebei Province Biomechanical Key Laboratory of Orthopedics, Shijiazhuang, Hebei, China

*Corresponding author: Ze Kun Zhang, Department of Radiology, The Third Hospital of Hebei Medical University, Shijiazhuang, Hebei, 050051, China. Tel: +86-31188603361, Fax: +86-31187023626, E-mail: zhangzkjia@163.com

Received: February 18, 2013; Revised: April 12, 2013; Accepted: May 21, 2013

This is a case report of a 24-year-old man who presented with increased pain and firm swelling of the right foot after a minor twisting injury. Radiography, computed tomography (CT) and magnetic resonance imaging (MRI) findings showed ancillary information that was helpful for surgical treatment. The final diagnosis was confirmed as chondroblastoma of the navicular bone based on the pathology report. The navicular bone is a very rare site in the foot, where we should pay attention to chondroblastoma.

Keywords: Chondroblastoma; Bone; Magnetic Resonance Imaging

1. Introduction

Chondroblastoma is a rare bone tumor comprising less than 1-3% of primary bone tumors, which has no predilection to a specific bone, and it occurs characteristically in the epiphyses and secondary ossification centers of long bones, particularly in the femur, humerus, and tibia (1-5). Because the cortical bone, articular cartilage, and joint capsule usually act as natural barriers preventing tumor extension (6), it is unusual for chondroblastoma to exhibit cortical erosion or intraarticular invasion. Approximately 20% of these tumors occur in either the calcaneus or talus, and occurrence of an associated cystic lesion has been reported highly to 33% (7). Although navicular chondroblastoma has been reported in the literature (1), it is very rare (4). Davila et al. estimated a series of 211 patients with hands and feet chondroblastomas, and no lesion was reported in the navicular bone (8). In a series of 332 patients with chondroblastoma, of the 42 feet cases, only one lesion was found in the navicular bone by Fink et al. (1).

2. Case Presentation

A 24-year-old man complained of a 24-month history of pain and swelling in the right foot after a minor twisting injury. The past medical history was significant for repeated "ankle sprains". The pain was present at rest and it was generalized around the ankle. He also complained of mechanical pain in the midfoot. Despite the symptoms, he was working and playing table tennis. Physical examination revealed mild swelling on the medial aspect of his right midfoot. A firm, moderately tender mass about 2×1 cm was palpated. The ankle had a full range of motion and limited inversion and eversion secondary to pain.

X-rays showed a large expansile cyst in the right navicular bone with sclerotic margins and septation (Figure 1). The lesion appeared to invade all of the navicular bone, with questionable extension into the neighboring joint. Later, for further diagnosis, computerized tomography (CT) was chosen and it showed a large defect with scalloped, septated, sclerotic, and well-defined margins (Figure 2 A, B, C). Most of the navicular bone was invaded with no evidence of calcification. There was a 2×4 cm cortical thinning following cortical defect at the level of the talonavicular joint facet and cuneonavicular joint facet. A lesion instead of the normal bone architecture with no soft-tissue component was detected on magnetic resonance (MR) imaging with low signal intensity in spin echo (SE) T1-weighted image and high signal intensity in turbo spin echo (TSE) T1-weighted image with short time inversion recovery (STIR) (Figure 3 A and B). Because the patient underwent MR scan with low field MR equipment, we could only acquire low quality MR images. However, based on the MR images we could know about the character of the lesion.

The lesion was extensive and it nearly replaced the navicular bone completely. In addition, it was concurrent with medial soft tissue involvement and joint facet deficit along the medial aspect of the bone. Therefore, the initial diagnosis was giant cell tumor or aneurysmal bone cyst (ABC). However, chondroblastoma was confirmed by pathology (Figure 4). At the end, the tumor was excised and operated by using internal fixation with bone graft. The patient was followed up by plain radiography at three-monthly intervals for two years, including the lung and foot (Figure 5). There was no evidence of recurrence 1 year later.



Figure 1. A 24-year-old man with navicular chondroblastoma. Anteroposterior radiograph of the right foot shows a large expansile cyst within the navicular bone with sclerotic margins and septation. The lesion appeared to involve the entire navicular bone. There was questionable extension into the joint.

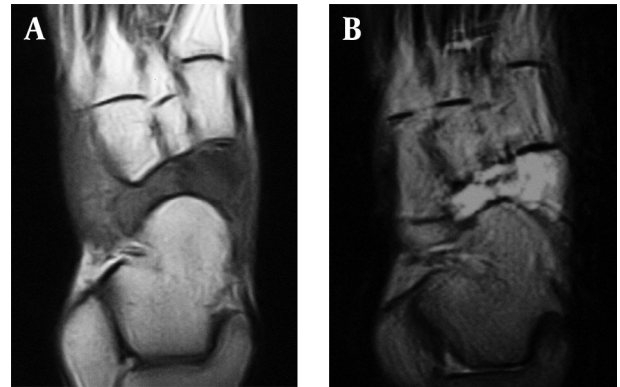


Figure 3. Coronal SE T1-Weighted (A) and short time inversion recovery (STIR) MR (B) images of the navicular bone show unequal signal. Note the well-defined low T1 intensity signal, and the high signal intensity. (T1-SE: FOV: 180mm; TR: 512 ms; TE: 11 ms; Flip angle: 90°; Bandwidth: 150Hz/Px; T1-TSE-STIR: FOV: 180mm; TR: 3700 ms; TE: 38 ms; TI: 160 ms; Flip angle: 150°; Bandwidth: 191Hz/Px)

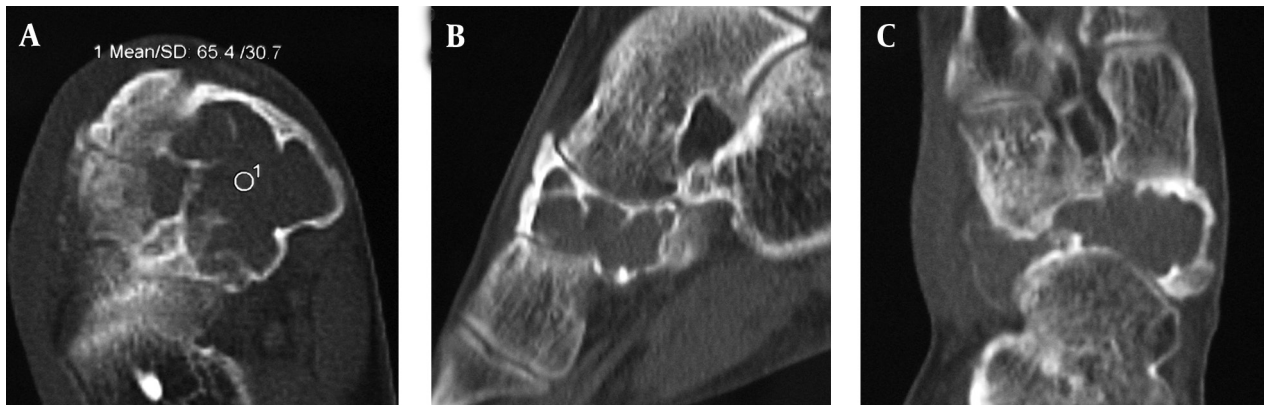


Figure 2. Axial (A), Sagittal (B) and Coronal (C) CT images show an expansile lesion of the navicular bone, with a large defect with scalloped, septated, sclerotic, and well-defined margins. There was cortical deficit at the level of the talonavicular joint facet and cuneonavicular joint facet. The CT number of the lesion was 65.4 Hounsfield units.

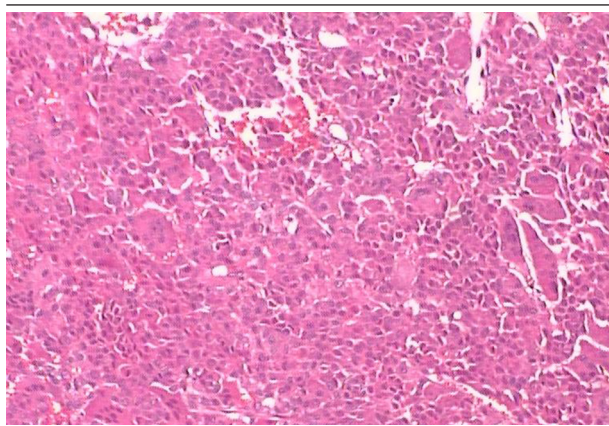


Figure 4. Histopathology of the curettage specimen shows polygonal-shaped chondroblasts that are large and closely packed with a central, basophilic, characteristically grooved nucleus and translucent cytoplasm. Scattered throughout are small, nucleated giant cells and islands of more mature cartilage (Hematoxylin and Eosin $\times 40$).



Figure 5. Follow-up anteroposterior radiography of the foot shows the navicular bone was excised and operated by using internal fixation with bone graft, and no evidence of recurrence is present.

3. Discussion

Classic chondroblastoma has been described as a tumor of the epiphysis of long bones in skeletally immature individuals and it comprises 1-3% incidence of all bone tumors (1-3, 9). Generally, chondroblastoma can behave aggressively to the local bone, soft tissue, but rarely the joints (1). Usually, this tumor grows rarely in the foot (1). It was reported that chondroblastoma of the feet constituted 0.47% of all tumors reviewed and it represented 10.4% of all chondroblastoma cases (1, 4, 8). To the best of our knowledge, only one prior study has described a case of chondroblastoma in the navicular bone (1). The most common clinical feature is pain, especially in pathologic fracture, and it usually takes several months before presentation (7). Approximately, 20-50% of the patients have a history of trauma (10, 11). The common clinical findings are localized swelling, a decreased range of motion and tenderness on direct palpation. About 1-13% of the patients present with pathological fracture (9, 10, 12). Radiologically, chondroblastoma is generally radiolucent, round-shaped, with a well-defined, thin sclerotic rim, and erosion of the epiphysis or neighboring metaphysis of a long bone (13). The surrounding cortical bone may be intact or expanded, but breakthrough is not usual. A scattered, stippled calcification appearance or a sparsely trabeculated pattern can sometimes be seen (3). The appearance of chondroblastoma in the hands and feet was similar to that described in the long bones: a lytic lesion with sclerotic margins, bony expansion, matrix mineralization, and occasional septation (8). The greatly expanding inner lesion can result in the formation of the mass in this tumor. In contrast to long bones in which pathologic fracture is an uncommon characteristic of tumor (occurring in 1-13% of the patients) (2, 13), pathologic subchondral fracture of chondroblastoma is frequent in the foot, but it is not always obvious on plain films (8, 13). Though joint erosion in bony tumors is very rare (1), encroachment of the joint is not rare in the tarsal bone (8). As in the present study, the lesion expanded greatly and destroyed the articular surface of the talonavicular and cuneonavicular joints. Conventional radiography is an initial examination tool of the painful region. The encroachment of tarsal bones with chondroblastoma is usually located in secondary ossification centers, with cortical expansion without associated erosive changes in the cortex (4). In spite of the similarity between chondroblastoma and ABC or giant cell tumor, the diagnosis can be made. Firstly, the sex and age of the patient should be considered. In the foot, the incidence is greater in men and the age is older than that with chondroblastoma elsewhere (7, 8, 13, 14). In this case report, the age of the patient was in the usual age range, 24 years old (the usual age of chondroblastoma is 10-30 years), while 80% of ABCs present before the age of 20 (14) and giant cell tumor present after 30 (15). Secondly, the lesion of chondroblastoma is slightly expansible with a well-defined margin and a sclerotic rim (13). However, the lesion of ABC and giant cell tumor often

appears more aggressively with an exaggeration of bone expansion and cortical thinning following cortical deficit (14). As for this tumor, the lesion presented similar to ABC and giant cell tumor, which could cause misdiagnosis. CT and MRI techniques are helpful in making the differential diagnosis. On CT, the degree of calcification and septation may be identified to analyze. On the other hand, enhanced bone details and cortical continuity could be evaluated on CT that provides the size and extension of the lesion in the cortical bone and it is helpful for surgery. MR findings can perspicuously show this tumor as low signals in T1-weighted images, with less inhomogeneity, and high signals in T2-weighted images, which is similar to the long bones (16). Soft tissue mass and the medulla invasion can be evaluated on MR imaging. It is a helpful imaging tool in describing the extent of the tumor, and finding pathologic subchondral fracture of chondroblastoma in the foot (16). Microscopic examination of this tumor reveals typical polygonal-shaped chondroblasts and osteoclast-like giant cells. The chondroblasts are large and closely packed with a central, basophilic, characteristically grooved nucleus and translucent cytoplasm. Scattered throughout are small, nucleated giant cells and islands of more mature cartilage. Calcification usually presents in most lesions, and it has an intercellular distribution with a "chicken wire" or "picket fence" appearance (12). However, no calcification was discovered in the present tumor.

Chondroblastoma should be treated surgically when detected as the tumor may exhibit an aggressive behavior despite its benign nature. Surgical treatment includes curettage and resection (3) that creates a defect in conjunction with bone grafting using internal fixation. Though it is reported that the outcome of this tumor is good after operating, chondroblastomas have the danger of recurrence and pulmonary metastases (5, 17). To prevent these above, the close follow-up is warranted. Suggestion should be given to perform the plain radiography of the lung and foot. In conclusion, chondroblastoma of the navicular bone is a rare benign bone tumor. The present report is the first detailed imaging presentation of chondroblastoma of the navicular bone. This lesion was extensive, with near complete replacement of the navicular bone without calcification. It is difficult to make the differential diagnoses of chondroblastoma from primary giant cell tumor and ABC. The correct diagnosis and treatment should be made by cooperation of radiologists, bone pathologists and orthopedic surgeons.

Acknowledgements

All authors thank Dr. JianPing Ding for his help in editing the manuscript.

References

1. Fink BR, Temple HT, Chiricosta FM, Mizel MS, Murphey MD. Chondroblastoma of the foot. *Foot Ankle Int.* 1997;18(4):236-42.
2. McLeod RA, Beabout JW. The roentgenographic features of

- chondroblastoma. *Am J Roentgenol Radium Ther Nucl Med.* 1973;**118**(2):464-71.
3. Ben Maitigue M, Osman W, Ouni F, Boughammoura H, Nawar N, Mtaoumi M, et al. [Chondroblastoma of bone]. *Tunis Med.* 2012;**90**(7):571-8.
 4. Ningegowda RV, Subramanian K, Suresh I. Chondroblastoma of the talus. *J Foot Ankle Surg.* 2013;**52**(5):673-7.
 5. Sohn SH, Koh SA, Kim DG, Park SW, Lee KH, Kim MK, et al. A case of spine origin chondroblastoma metastasis to lung. *Cancer Res Treat.* 2009;**41**(4):241-4.
 6. Enneking WF. *Musculoskeletal Cancer Surgery.* New York: Churchill Livingstone; 1983.
 7. Ramappa AJ, Lee FY, Tang P, Carlson JR, Gebhardt MC, Mankin HJ. Chondroblastoma of bone. *J Bone Joint Surg Am.* 2000;**82**-A(8):1140-5.
 8. Davila JA, Amrami KK, Sundaram M, Adkins MC, Unni KK. Chondroblastoma of the hands and feet. *Skeletal Radiol.* 2004;**33**(10):582-7.
 9. Springfield DS, Capanna R, Gherlinzoni F, Picci P, Campanacci M. Chondroblastoma. A review of seventy cases. *J Bone Joint Surg Am.* 1985;**67**(5):748-55.
 10. Turcotte RE, Kurt AM, Sim FH, Unni KK, McLeod RA. Chondroblastoma. *Hum Pathol.* 1993;**24**(9):944-9.
 11. Nolan DJ, Middlemiss H. Chondroblastoma of bone. *Clin Radiol.* 1975;**26**(3):343-50.
 12. Huvos AG, Marcove RC. Chondroblastoma of bone. A critical review. *Clin Orthop Relat Res.* 1973(95):300-12.
 13. Sterling G, Wilson A. Chondroblastoma of the talus: a case report. *J Foot Ankle Surg.* 2002;**41**(3):178-82.
 14. Sessions W, Siegel HJ, Thomas J, Pitt M, Said-Al-Naief N, Casillas MA. Chondroblastoma with associated aneurysmal bone cyst of the cuboid. *J Foot Ankle Surg.* 2005;**44**(1):64-7.
 15. Dickson BC, Li SQ, Wunder JS, Ferguson PC, Eslami B, Werier JA, et al. Giant cell tumor of bone express p63. *Mod Pathol.* 2008;**21**(4):369-75.
 16. Blancas C, Llauger J, Palmer J, Valverde S, Bague S. [Imaging findings in chondroblastoma]. *Radiologia.* 2008;**50**(5):416-23.
 17. Konishi E, Okubo T, Itoi M, Katsumi Y, Murata H, Yanagisawa A. Chondroblastoma of trapezium with metacarpal involvement. *Orthopedics.* 2008;**31**(4):395.